

John Eblen "How to Date Starr Wall Mounts" (1)

**Dating Brown Mfg. Co.**

**STARR "X" STATIONARY OPENERS**

BY H. JOHN EBLEN

Brown Mfg. Co. has been producing bottle openers since 1925 in various shapes and sizes. One of them, the original marked STARR "X", appeared in 1928, being a side mounted, 2-hole with Brown's 1st original early makers label.



PATENTED 4-25



In 1929, of the May edition of the Coca-Cola bottler, an ad appeared advertising the redesigned and familiar STARR "X" which is well known and collected widely today. This makers label, as the ad shows, is what Brown imprinted on the new STARR "X" made from the 1929-1935 time frame.



PATD "X" REG

1935 marks a 3rd label change. Starr "X" becomes a Brown registered trademark name in later years. Openers marked with these labels were produced in the 1935-1943 time period.



PATD APR. 1925



PATEND 2333088

In 1943 Brown gets US patent 2333088 and changes the label for 4th time dropping Thomas Hamilton's date of April 1925 and adding Brown's newly issued patent number to the makers mark. All openers made carry the casting mark of USA on back. These new labels are produced during the 1943-1975 time period.

John Eblen "How to Date Starr Wall Mounts" (2)

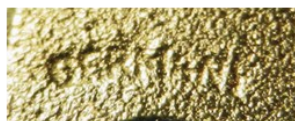
**Dating Brown Mfg. Co.**

**STARR X STATIONARY OPENERS**

In 1975, operational changes now moves casting to overseas markets. Brown's front label remains unchanged, with N. News, Va. still imprinted on front. However, the casting location of "Made in the USA" is now replaced with **West Germany or W. Germany imprinted on backside**. Openers with this new casting location, on the back, are produced between 1975-1989.



1989 Ownership changes for the Brown company around the same time the Berlin wall falls in Europe. The backside casting mark, now reflects this renewed unification by **changing it from W. Germany to Germany**. Brown's front label still remains unchanged, with N. News, Va. Still imprinted on front. Openers marked with this change are produced between 1989-1999.



1998 Brown company ownership changes hands again and the STARR "X" front label is changed for a 6th time with **N. News, Va. being replaced, as company headquarters to Atlanta, Ga.** being imprinted on the front label. China is now another casting location to join Germany that Brown Mfg. uses to cast openers and is reflected on the backs. Both German or China backside marked openers, using the new front label headquarter change, are produced between 1999-2010.



2010 and beyond, Brown's front label is changed for the 7th time in its history with the **retiring of Patent 23330888 and replacing it with bottleopener.com**. Atlanta Ga. Or Decatur Ga. might appear on front makers mark. All German or China marked castings produced with this change are made from 2011-present.