

***The 2022 Picture Guide of Cigar Box Openers
By Schwimmer & Enloe & Stanley***



**The 2022 Picture Guide of
Cigar Box Openers**

**By
Mike Schwimmer
Glen Enloe
John Stanley**



ADVERTISING CIGAR BOX OPENERS

A guide to collecting small tools known as CIGAR BOX OPENERS that were used by manufacturers and distributors of cigars to merchandise their product.

By Michael Schwimmer

copyright @ 2008 Michael Schwimmer

By John Stanley

copyright @ 2017 & 2019 & 2020 & 2022 John Stanley

Special Thank You to the “Early Collectors” of CBOs:

Bob Carter, Glen Enloe, Bill Ennis, Ollie Hibbeler Jr., Jesse Peters (Sold CBO Collection), Mike Schwimmer and to all of those unknown C.B.O. collectors who labor in obscurity.

September 15, 2017
PO Box 51008
Durham NC 27717
jfo@mindspring.com

Dear Fellow Cigar Box Opener (CBO) Collectors,

Twenty-two years after Mike Schwimmer's original CBO picture guide it was time for an update. Mike originally had used an all number guide but then switched to letters and numbers after a couple of years. He made several updates with the last being about 10 years ago. Using Mike's type letter guide and then his numbering of types in each category the guide has expanded to about 250 different types.

Mike at first listed only CBOs with cigar advertising but many nice CBOs do not have advertising and have been added to this guide. Mike also tried to show CBOs in original size but this updated guide does not attempt to reflect true scale. Length measurements have been added to help collectors. Finally in Mike's 2007 update he used letter codes for new styles that were similar to one already existing. In this guide they were given a number with a reference to Mike's letter code. He may have had BB-01A and now it is BB-21.

Another early collector, Glen Enloe, had used a type guide system but Glen's known styles have been incorporated into Mike's. Comments and suggestions are always welcomed. Some early introductions by Mike and stories by Glen have been included along with known catalogue page examples and some known patents.

Regards and in Memory of Mike and Glen,

John Stanley

March 10, 2019 New Types Added: BB-32, BB-33, BB-34, DHM-40, HBO-19, MIS-31, MIS-32, MIS-33, PKT-24, PKT-25, PKT-26, SEP-41, SEP-42, SEP-43, SEP-44, SHM-33, SHM-34

September 25, 2020 New Types Added: DHM-42, MIS-35, MIS-36, PKT-26, PKT-27, SEP-45, SEP-46

July 8, 2022 New Types Added: MIS-37, MIS-38, SEP-47

Master List of Cigar Box Openers by Type (Shape), April 1995 by Mike Schwimmer

This is the first attempt to classify cigar box openers and make the list available to collectors of these historic advertising items. Some explanation and background information:

About 25 years ago or so, Jess Peters of Florida had accumulated a large collection of cbo-s (as henceforth be referred to). (John Stanley adds that Peters acquired the cbo-s and also a large collection of beer advertising openers from the estate of a traveling salesman from the mid-west who had started in the 1940s before Peters acquired them around 1970). They came in many shapes and sizes — and slight variations of those shapes — and Jess phot-copied each different one (by shape) and gave it a number. When I purchased the bulk of his collection a couple of years ago, he sent me a copy of his master list which he referred to as a “type list” with each type shown with its respective number.

I have since uncovered other types as well as variations on existing ones. No doubt there are still others which I’ve not come across resting in collections of others, or sitting out there somewhere in flea markets, antique shops and malls. (Additions to the list, by the way, are welcome and requested.)

And so, I’ve re-done the Jess Peters list to include other types of cbo-s I’ve found. I’ve tried to keep the list as best I can to the type numbers that Jess originally assigned. Other cbo collectors are familiar with his system, but changes had to be made in order to group like cbo-s together as much as possible.

I hope this Master Type List of cbo-s will help current collectors in organizing their cbo collections and may encourage others interested in either cigar collectibles or other types of openers to begin a cbo collection.

Mike Schwimmer, 325 East Blodgett, Lake Bluff, IL 60044-2112 (708) 295-1901

#01 HT-11	#22 SHM-04	#37 RND-01	#60 HBO-02	#81 SEP-03
#02 HT-09	#23 SHM-03	#38 RND-02	#61 RBO-01	#82 SEP-02
#03 HT-10	#24 SHM-09	#39 HBO-10	#62 MIS-01	#83 SEP-04
#04 MIS-13	#25 DHM-09	#40 NL-06	#62-A MIS-02	#84 RBO-16
#05 HT-02	#26 DHM-07	#41 RBO-08	#63 HBO-07	#85 BB-99
#05-A HT-03	#26-A DHM-08	#42 HOR-04	#63-A HBO-08	#86 MIS-08
#05-B HT-05	#26-B DHM-06	#43 HOR-02	#64 MIS-03	#87 MIS-05
#06 HT-06	#27 SHM-11	#44 HOR-03	#65 RND-05	#88 HBO-12
#07 PKT-08	#28 DHM-10	#45 RND-03	#66 HBO-09	#89 BUT-01
#08 PKT-02	#28-A DHM-12	#45-A RND-04	#67 BB-03	#90 SEP-09
#08-A PKT-03	#28-B DHM-11	#46 RND-06	#68 SQR-03	#91 SHM-02
#09 PKT-27	#29 HKH-06	#47 SEP-01	#69 SQR-02	#92 SEP-44
#10 PKT-04	#30 HKH-02	#48 SEP-05	#70 BB-05	#93 MIS-12
#11 PKT-11	#31 HKH-07	#49 SEP-38	#71 MIS-09	#94 SEP-43
#12 PKT-01	#31-A HKH-09	#50 SEP-07	#72 BB-02	
#13 DHM-02	#32 RBO-11	#51 HBO-04	#73 BB-08	
#14 DHM-01	#33 NL-02	#52 HBO-05	#73-A BB-09	
#15 DHM-05	#33-A NL-01	#53 RND-09	#74 BB-06	
#16 DHM-03	#34 NL-03	#54 RND-08	#75 BB-14	
#17 SHM-12	#34-A NL-05	#55 BB-17	#76 BB-16	
#18 DHM-14	#34-B NL-04	#56 MIS-06	#77 BB-10	
#19 SHM-01	#34-C NL-05	#57 BB-15	#78 MIS-15	
#20 SHM-05	#35 RBO-06	#58 HBO-01	#79 HT-12	
#21 SHM-07	#36 BUT-03	#59 HBO-03	#80 RBO-04	

**Mike's
original
number
shown
with cur-
rent CBO
classifica-
tion code.**

Cigar Box Openers Suggested Classification System April 1996

This is the second attempt to classify cigar box openers and is an extension of my initial Master List compiled in May 1995.

I began collecting cbo-s (as cigar box openers will be henceforth referred to here) about 4 years ago. After coming in contact with some other collectors, I realized that some sort of classification system was necessary so that we few could at least communicate without long explanations of the type and shape of cbo we were talking about trading, buying or selling to each other.

And so I put together a list of types and shapes and variants from my own collection and assigned each a number. The number paralleled as closely as possible the numbers assigned y Jess Peters of Florida, who some 25 years or so ago had accumulated a large collection, the bulk of which I had purchased. Following his system seemed logical and the easiest since I was not at that time acquainted with any other collector's particular system.

I made this Master List available at the Just for Openers 1995 convention in St. Joseph, MO to anyone who wanted it. Since that time, other collectors have provided me with the inventory of their own collections and with it, their own classification system.

It is quite obvious that a universal classification for cho-s is needed. More and more people are "getting into" cbo-s. Some of these are bottle opener collectors who want to expand their field. Others are the increasing number of cigar smokers today who want to buy nostalgia that the old cigar advertising represents. Cho-s are a relatively cheap way to do this, since boxes, tins, signs--- even box labels --- can run into the 100's of dollars each.

After looking over other collector's systems, I felt that an arbitrary numbering system such as Peter's (and mine) was simply not good enough. Cbo-s need to be grouped so that like shapes or types are together as much as possible. I have done this with this suggested classification system. I have chosen 15 categories and have assigned a letter code to each. Each cbo within that category has also been assigned a single letter, rather than a number. This is arbitrary. My idea here was to make the cbo designation completely different from the Just for Openers designation of beer advertising openers and corkscrews. We can always change those single letters designations to numbers, if it seems easier.

Any and all comments, criticism and suggestions – as well as additions to the lists – are welcome and requested.

I hope this Master Type/Shape List of CBO-s will help current collectors in organizing their own collections and may encourage others interested in either cigar collections or other types of openers to begin a cbo collection.

And we have? A number of the main CBO collectors have responded to this letter and they seem to prefer a number, rather than a single letter system: i.e., SHM-1 instead of SHM-a, etc. It seems to be much easier to remember and to categorize the CBO-s. This change is reflected in the enclosed Handbook.

Mike Schwimmer, 325 East Blodgett, Lake Bluff, IL 60044-2112 847/295-1901



Hey, fellow CBO-ers;

I'm attempting (aren't we all?!) to own at least one of every type of CBO. I'm willing to trade any CBO type I have more than one of for a possible dupe of yours— or one you're willing to give up for one you need. (2-for-1 from me is possible, if you insist — but you wouldn't do that.....would you?)

Using the designations from the enclosed Handbook, these are the types/shapes I am missing:

Bars & Blades: BB-01, 06, 19

Butter Knives: BUT-02, 04

Double Hammers: DHM-13, 14, 15, 16

Horse Heads: HOR-02, 03

Miscellaneous: MIS-04, 06, 07, 10, 11

Nails: NL-05

Pocket Knives: PKT-01, 05, 06, 08, 09, 10

Ring Bottle Openers: RBO-03, 09, 12

Round Heads: RND-06, 08, 10

Separate Handles: SEP-02, 06, 07, 08, 09

Single Hammers: SHM-02, 08, 10, 11, 13, 14

Square Heads: SQR-01, 04

(NOTE: Those of you wanting SEP-10 can call the 800 # shown on the handle and order it from the Thompson Cigar Co. It is \$19.95.)

One proviso: Any and all CBO-s you're willing to trade (or sell?) to me must have advertising with a VERY STRONG preference for cigar brands, companies, distributors or at least cigar stores or stands.

I hope you can help out. If you need certain types, certain states, whatever, I'll be very accommodating if I possibly can.

Thanks much!

Mike Schwimmer

CIGAR BOX OPENERS

History and Background



Part 1 of the Seminar on Cigar Box Openers

for the 1996 Convention of Just For Openers
presented by Michael Schwimmer

CIGAR BOX OPENERS

History and Background

Why cigar box openers? Pocket knives, table knives, screw drivers and assorted other household implements were available to do the relatively simple job of opening up a wooden cigar box. Yes, and you can cut your fingernails with a scissors, too. The proper tool always gets the job done best and faster. And so, on October 13, 1868, the first known patent for a cigar box opener was granted.

It was in 1868 when Congress passed a law requiring a federal tax be paid on the manufacture of cigars. Tax stamps had to be purchased by the manufacturer and affixed to each box of the product. Also, a cautionary notice was required to be on the box. It stated in part: "Every person is cautioned...(not) to remove the contents of this box without destroying said (tax) stamp under the penalties provided by law..."

Tax stamps were always affixed on cigar boxes so that they would partially cover the front edge where the lid met the box. In that way, when the decorative wrap that covered that area was slit and the nail holding the box lid was pried up so that the lid could be opened, the tax stamp was thus "destroyed." Therefore, a handy tool to accomplish all of this easily was needed.

That 1868 patent description refers back to an 1864 patent for a box opening tool and states that the new tool is intended for uses which the aforementioned box opener was not adapted. The new tool was claimed to be "an improvement in box openers—intended principally to meet the wans of cigar dealers, who, as it is well known, have frequent occasion to open and close boxes containing cigars...."

Other patents have been found, the last dated May 8, 1916. Some cigar box openers have the patent date inscribed on them. Those known are so indicated in this Handbook. See **Figures 1 and 2** for actual patent notices, dated 1886 and 1895 respectively, of opener types that, oddly, no collector that we know of has yet come across? It is questionable if they were ever manufactured.

Almost all cigar box openers----we'll refer to them henceforth as cbo-s—were made of various grades of steel (later, aluminum) and most, but not all, had three basic characteristics. First, a tapered edge or blade to slit the tax stamp and decorative wrap; second, a small "nick" in that blade to catch the lid nail and pry up the lid; and third, a hammer-like protrusion or heavy flat surface to pound the lid shut again. (Many cigar smokers kept their cigars in the original box and did not transfer them to humidors.) Later openers dispensed with the hammer head as humidors came into greater use. Some cbo-s have separate handles of wood, horn and –later---plastic.

Cbo-s were made in an amazing number of shapes and sizes – over 175 are catalogued in this Handbook and more types are being found by collectors today. **Figures 3 thru 9** are copies of some catalog pages form various early manufacturers. The earliest we've found is form 1892 and the last from 1925. As you can see, cbo-s range from simple blade-with-a-nick type to hammers, hatchets, stiletos, re-formed box

nails and other amorphous shapes. Some cbo-s are combined with bottle openers, cigar cutters and knives.

Also of importance on these catalog pages are phrases that give an indication of how cbo-s were distributed. In 1907, Brunhoff calls the cbo “a useful substitute for a business card—one that will not be thrown away.” Erie in 1907 says, “The cheapest and most useful article you can use for keeping your brand of cigars or you name constantly before your trade”. In 1925, Brunhoff says, “Cost little, but help much in getting the goodwill of the man behind the counter.”

Cbo-s, then, were first an item for the cigar trade and only secondarily for the ultimate consumer—the cigar smoker—unlike bottle openers that were given out to the beer buyer, available almost anytime he asked for one. (Cbo-s designed for individuals had long been made as men’s jewelry or accessories out of silver, ivory and other materials. Many were quite ornate and were combined with cigar cutters and other implements. They do not fall into his purview of Advertising cbo-s.) Most cbo-s were imprinted with either cigar brand and manufacturer names, or the names of various cigar distributors and wholesalers across the country. Many of the latter also mentioned cigar brands.

Factory salesmen gave cho-s to distributors and wholesalers and wholesaler salesmen gave them to their retail outlets: cigar stores, saloons, restaurants and news stands. Certainly many retailers passed the cbo-s on to their cigar buying customers, but probably only to their “regulars” who bought up to four or five boxes each month. This pattern of distribution is why finding cbo-s is more difficult than finding bottle openers. Cbo-s were made for cigar trade, not the cigar smoker, and far fewer of them were produced.

Cbo-s had a life of about 50 years from their introduction in the 1880’s to a virtual fadeout by around 1930. By 1930, cigarettes had become the smoke of choice among men. Better cigars were purchased in twos and threes to complement cigarette smoking. The more common cigars were being packaged in 3-to-6 cigar pouches and boxes to fit in the pocket, and sales of boxes of 25 to 100 declined. And in the 1930’s, the ideal of the cbo as a merchandising tool had just abut died. Larger, stronger “industrial-type” openers without advertising were being used by cigar stores to open boxes for display.

The Cigar Box Opener Handbook shows all of the shapes and variations of cbo-s that have been found to date. Some are from the catalog pages, Figures 3 to 9, which have not yet turned up but were obviously produced. We are always looking for other shapes and welcome any additions.

Collecting cbo-s can be enjoyable in may ways. Some collectors try to find at least one of every different shape or variation. Others accumulate as many different cigar brands as they can. Still others look for cbo-s from their city, state or part of country.

Cbo-s are easy to display and require little room. They may be found in some antique shops and malls, at flea markets and shows or on eBay. And they are still relatively inexpensive. Enjoy!

Mike Schwimmer
Minneapolis January 1997



Most collectors seem to be intrigued by the different and mysterious. So it was with me, as a collector of bottle openers, when a friend presented me with a bottle opener that had a strange and unfamiliar gadget on the opposite end (Figure 1, No. 1). We finally concluded that it looked more like a combination pipe reamer and tamper than anything else. However, this explanation left something to be desired, so I continued to wonder and ask questions. It was quite some time later that I found out my “whatsit” was actually a cigar box opener. That appealed to me and sounded like a “neat” thing to collect. Five years, and several hundred cigar box openers later, I still find them to be an interesting subject for collection and study – and still occasionally turn up a “new” type that I’ve never seen before.

The first record I have been able to find of a tool made specifically to open a cigar box is a patent issued on October 13, 1868. There is evidence that this was the first patent for a special tool designed to open cigar boxes. It refers back to an 1864 patent for a tool for opening boxes and states that the new tool is intended for uses for which the aforementioned

box opener was not adapted. The new tool was claimed to be “an improvement in box openers – intended principally to meet the wants of cigar dealers, who, as is well known, have frequent occasion to open and close boxes containing cigars, tobacco, etc.” The last patent I located for a cigar box opener was issued on May 9, 1916. Of the ten patents I know of, I have found only two actual openers that were obviously based on a corresponding patent. One of these (Fig. 1, No. 2) was patented on October 27, 1868 – just two weeks after the first patent was issued. I also have several openers that are stamped with patent dates or an indication that a patent is pending that I have not been able to find the corresponding patents for. Of course, many patents are obtained for items which are never commercial produced and conversely, thousands of items are commercially produced without being patented.

The typical cigar box opener has a tapered edge to pry the lid of the box open, a small nick to remove the nail from the lid and a small hammer or heavy flat surface to nail the lid shut again. These three devices were combined in a seemingly endless variety of imaginative

shapes. There is also a much smaller group of these tools which do not have a hammer device. I have currently cataloged sixty-eight distinctly different shapes and another twenty-six variations of these basic shapes.

Cigar box openers ranged from the simplest device imaginable to elaborate and expensive affairs. The simplest was merely a small piece of metal to open the box and remove the nail. Others were combined with various utility tools, particularly bottle openers. They are also sometimes found in combination with cigar cutters and even less frequently with such tools as pocketknives or corkscrews and even, in one case, with a glass cutter! Some were made to fold like a pocket knife and some had fancy stag-horn or even silver handles.

Approximately one quarter of the different types of cigar box openers in my collection have a bottle opener on the other end. I would guess that the survival rate of these openers, which had another functional use was much higher than of those that were discarded because they had no secondary use. This would be particularly applicable to the type shown in Fig. 1, No. 3, which had absolutely no other use – not

even a hammer for the kids to play with or a sturdy point to pry off can lids, etc.

Cigar box openers were given out primarily to advertise cigar brands or manufacturers. But they also advertised wholesale and retail tobacconists and other retail establishments, hotels, bars, beer, soda and other miscellaneous goods or even political campaigns. The majority of advertising openers were generally for personal use and, therefore, were smaller and of lighter construction than those for commercial use by manufacturers or wholesalers. Ninety percent of the openers I have carry advertising. Of the ten percent without advertising, half are sterling silver for personal use and only three are of a particularly heavy construction for commercial use. The balance are light duty openers which were sold at retail for personal use, except one which was hand-forged.

Very few of the openers I have found have any marks indicating their origin. However, I do have a copy of a page from a Brunhoff Manufacturing Company of Cincinnati, Ohio catalog which shows a dozen different cigar box openers that could be imprinted with the desired advertisement. I have eleven of the openers shown in this catalog, but none of them identified the manufacturer, although one does advertise the Brunhoff Company as a source for advertising novelties. From those that are marked, it appears that quite a few were made in Germany. The only actual United States manufacturing identification I have found on any openers are on one from the Erie Specialty Company of Erie, Pennsylvania and one one from Harrington Cutlery Company of Southbridge, Massachusetts, who made cigar box openers for commercial use (Fig. 1, No.4).

In my experience, most people have never heard of cigar box openers and even many people who have them don't know what they are. I have purchased cigar box openers as pipe tools (my first impression, also), a lady's hammer, a lifter, a paper weight (one of the hammers), a coke wrench (whatever that is) and frequently either as a "whatsit" or a simple bottle opener with the provision for the alternate function unnoticed.

I have no idea how prevalent these gadgets were in their heyday, but I have talked to men in their seventies who claim to have smoked cigars all their lives, but never heard of a special tool to open cigar boxes. Many smokers opened their boxes with screwdrivers or knives or whatever hunk of appropriate metal was lying around. One veteran smoker at a flea market sold me a small regular box opener that he had used for many years to open cigar boxes. A friend who worked in his uncle's drug store in the early 1930s remembered cigar box openers being given to them with each full case of cigars, but they would not generally get one with less than case lots. Of course, those limited quantities were given out very selectively to the best

customers, rather than in wholesale lots to everybody, as bottle openers were. At any rate, they are certainly much more scarce than bottle openers, but there are still enough around at a reasonable price to keep them in the class of "fun" collectibles.

The replacement of wooden cigar boxes with cardboard boxes which are easily opened without the aid of any tools and the phasing out of the "cheap" advertising giveaways marked the end of production of most of these tools on a large scale. A few commercial cigar box openers are currently being made for those who purchase expensive cigars that are still packed in wooden boxes. All of these that I have seen have a cigar cutter on the opposite end and do not have any provision for hammering the nail back into the box. These modern openers are made in West Germany and retail for \$20 to \$25 each. This is considerably more than you should expect to pay for all but the most exotic collectible openers discussed in this article.

Oddly enough, with the profusion of figural adaptations of so many early twentieth century items, I have never run across any figural cigar box openers, other than the very appropriate hammers and hatchets. If anyone has any knowledge of figural cigar box openers, I would like to hear from them. I would also welcome any correspondence from other collectors or anyone who has cigar box openers or bottle openers with cigar advertising. I am also interested in any contemporary advertising, sales or other literature or personal knowledge which would contribute to the history of these tools of bygone days. Write to Bob Carter, 3809 Spring Meadow Drive, Ellicott City, Maryland 21043.

Reprinted from 1980s "Antique Trader" Issue from my collection using examples as close to the original article as possible.



Figure 1. No. 1 — The most common cigar box opener. No. 2 — An early folding cigar box opener based on an 1868 patent. Also has a glass cutter. No. 3 — A late, very simple opener. No. 4 — A typical heavy-duty opener for com-



Figure 2. No. 1 — An old cigar box opener with stag horn handles and silver trim. No. 2 — Fancy opener from Germany with Mother of Pearl handle. No. 3 — An opener with Sterling Silver handle. No. 4 — Another German opener with three different cigar cutters.



Figure 3. A miscellaneous group of cigar box openers showing a few of the many variations they were made in.

Cigar Box Openers

Table of Contents (CBO Type)

Bars and Blades (BB)
Butter Knives (BUT)
Double Hammers (DHM)
Hatchets (HT)
Hook Bottle Openers (HBO)
Hook Heads (HKH)
Horse Heads (HOR)
Miscellaneous (MIS)
Nails (NL)
Pocket Knives (PKT)
Ring Bottle Openers (RBO)
Round Heads (RND)
Separate Handles (SEP)
Single Hammers (SHM)
Square Heads (SQR)

Bars (1/8" thick or >) & Blades (thinner than 1/8") (BB)



BB-01 6 5/8" Bar, Notched Blade, Etched Printing



BB-02 6 5/8" Bar, Notched Blade, Etched Printing, Hole



BB-03 6 1/8" Bar, Notched Blade, Flat Printing



BB-04 6 5/16" Bar, Notched Blade, Indented Printing, Hole

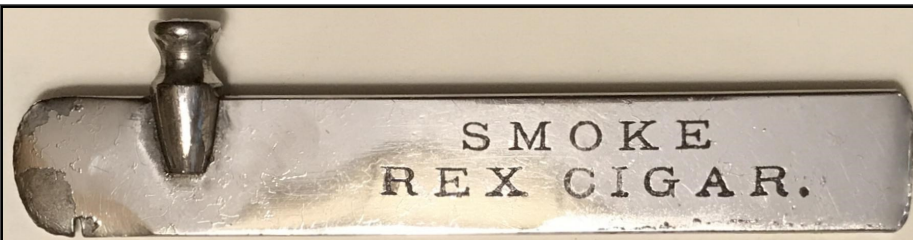


BB-05 6 1/8" Bar, Notched Blade, Flat Printing, Serrated Edge at Handle Edge



BB-06 6 1/8" Bar or Blade, Notched Blade, Flat Printing, Rounded Handle Edge

Bars (1/8" thick or >) & Blades (thinner than 1/8") (BB)**BB-07 5 3/8" Bar, Notched Blade, Flat or Indented Printing, Hole****BB-08 5" Bar, Notched Blade, Raised Printing on Screened Bossed Area****BB-09 5" Bar, Notched Blade, Raised Printing on Screened Bossed Area, Hole****BB-10 5" Bar, Notched Blade, Indented Printing****BB-11 5" Bar, Notched Blade, Indented Printing, Hole****BB-12 5" Blade, Notched, Indented Printing, Hole**

Bars (1/8" thick or >) & Blades (thinner than 1/8") (BB)**BB-13 4" Bar, Notched Blade, Indented Printing****BB-14 4 1/4" Blade, Notched, Indented Printing, Hole****BB-15 3" Blade, Notched, Indented Printing, Hole (See BB-34)****BB-16 6" Bar, Curved Crow-Bar Type Notched Blade, Indented Printing, Hole****BB-17 5 1/4" Bar, Notched Blade, Hammer, Flat Printing****BB-18 4 1/4" Blade, Notched, Hammer, Indented Printing, Hole**

Bars (1/8" thick or >) & Blades (thinner than 1/8") (BB)



BB-19 6 1/8" Bar, Notched Blade, Hammer, Flat Printing (Appeared in 1905 Catalog)



BB-20 5 3/4" Blade, Notched in Swelled Head, Flat Printing



BB-21 (See BB-07) 5 3/8" Bar, Notched Blade, Flat Printing, Off Center Hole



BB-22 5 7/8" Bar, Notched Blade, Indented Printing, Tapers Slightly Towards Blade End



BB-23 5" Bar, Notched Blade, Indented Printing, Hole Near CBO End



BB-24 4 5/8" (1" wide) Bar, Notched Blade, Raised Printing, Tapers Towards Blade End

Bars (1/8" thick or >) & Blades (thinner than 1/8") (BB)



BB-25 5 7/8" Bar, Notched Blade, Recessed Printing, Rounded Handle Edge



BB-26 5 1/2" (1" Wide) Blade, Notched, Indented Printing



BB-27 5 3/8" Bar, Notched Blade, Indented Printing, Tapers Steeply Towards Blade End



BB-28 4 1/8" Thin Blade, Notched, No Hammer, Cutter Blade, Ruler, File, Indented Printing



BB-29 5" Bar, Notched Blade, Indented Printing, Match Striker



BB-30 5 5/8" Bar, Notched Blade, Indented Printing, Match Striker

Bars (1/8" thick or >) & Blades (thinner than 1/8") (BB)



BB-31 6 3/8" Blade, Notched Blade, Flat Printing, Hole (See BB-07)



BB-32 5 1/2" Bar, Notched Blade, Indented Printing, Folding Corkscrew (German)



BB-33 5 3/8" Bar, Notched Blade, Indented Printing, Double Scalloped Handle

Commonly Used
As A Paint Can
Opener



BB-34 3" Blade, Square End Blade, Notched, Indented Printing, Hole (See BB-15)



BB-35 6 1/2" Bar, Notched Blade, Raised Head Cigar Cutter, Various Handle Materials



BB-36 6 1/2" Bar, Notched Blade, Flat Head Cigar Cutter, Various Handle Materials

Bars (1/8" thick or >) & Blades (thinner than 1/8") (BB)



BB-37 5 7/8" Bar, Notched Curved Blade, Raised Printing on Bossed Area

Butter Knives (BUT)



BUT-01 5 3/4" Notched Blade, Long Decorative Embossed Handle, Indented Printing



BUT-02 4 3/8" Notched Blade, Short Decorative Embossed Handle, Indented Printing



BUT-03 5 1/4" Small Notched Blade, Heavy Steel Handle, Raised Printing



BUT-04 4 7/8" Small Notched Blade, Heavy Steel Handle, Printing in Bossed Area



BUT-05 8 1/8" Small Notched Blade, Hammer, Litho Printing on Plastic Insert

Double Hammers (DHM)



DHM-01 4 1/4" Notched Blade, Flat Printing



DHM-02 4" Notched Blade, Indented Printing, Hole in Head



DHM-03 4" Notched Blade, Indented Printing, Hole in Handle, See DHM-40



DHM-04 4 3/8" Notched Blade, Indented Printing



DHM-05 4 5/8" Notched Blade, Raised Printing



DHM-06 4 1/8" Notched Blade, Raised Printing in Bossed Area

Double Hammers (DHM)



See DHM-39

DHM-07 3 3/4" Notched Blade, Raised Handle Between Heads, Indented Printing



DHM-08 3 3/4" Notched Blade, Raised Handle Between Smaller Heads, Brass



DHM-09 4 1/8" Double Nail Puller in Grooved Handle, Raised Printing, Cast Iron or Brass



DHM-10 5 1/2" Notched Blade in Front of Heads, Flat Printing, No Hole (See DHM-42)



DHM-11 5 3/8" Notched Blade in Front of Heads, Raised Printing in Bossed Area



DHM-12 5 1/4" Notched Blade in Front of Heads, Raised Printing in Bossed Area, Hole

Double Hammers (DHM)



DHM-13 4 5/8" Notched Blade, Grooved Handle, Flat Printing, Branded "Handy Hammer"



See DHM-38
& DHM-41

DHM-14 4 5/8" Nail Puller in Handle, Hook Bottle Opener, Indented Printing (M-77)



See DHM-33

DHM-15 5 3/4" One Head Extended, Nail Puller in Handle, Raised Printing

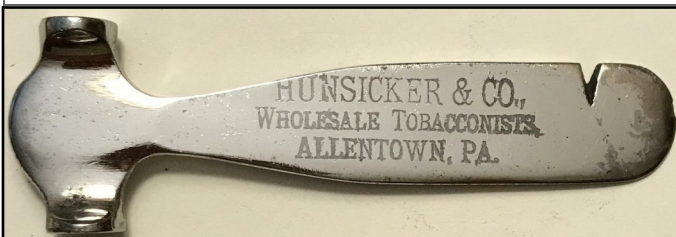


See DHM-36

DHM-16 5 1/8" Notched Blade, Guide Along Double Hammers to Prevent Blade From Entering to Far Into Cigar Box, Raised Printing in Bossed Area (Appeared in 1907 Brunhoff Catalog)



DHM-17 5" No Notch in Stepped-Down Blade End, Nail Puller in Handle, Raised Printing

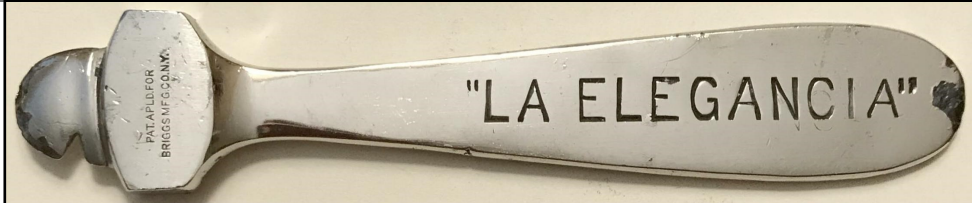


DHM-18 4 1/8" Notched Blade, Flat Printing (Left) Shorter Version (Right 3 5/8")

Double Hammers (DHM)



DHM-19 4 3/8" No Notch, No Blade, Flat Printing, Hole (Does Not Look Cut Down)



DHM-20 5 1/8" Notched Blade at Hammer End, Indented Printing



DHM-21 4 1/2" Long Notched Blade, Raised Printing in Bossed Area



See DHM-37

DHM-22 5 3/4" No Notch, Curved Pry Prongs, Raised Printing



DHM-23 4 1/8" Notched Blade, Raised Printing in Bossed Area, Hole in Head (02A)



DHM-24 4" Notched Blade, Slightly Curved Handle, Indented Printing

Double Hammers (DHM)



DHM-25 4" Notched Blade, Indented Printing, Square Gas Key Hole



DHM-26 4" Notched Blade, Indented Printing, Small Hole in Blade End



DHM-27 4 1/8" Notched Blade, Raised Handle Between Large Heads, Indented Printing



DHM-28 5 1/4" Notched Blade, Raised Handle Between Heads, Raised Printing



DHM-29 4 3/8" Notched Blade, Raised Handle Between Heads, Raised Printing, Hole



DHM-30 4" Notched Blade, Raised Handle Between Small Heads, Indented Printing

Double Hammers (DHM)



DHM-31 4 3/4" Single Nail Puller in Thin Steel Handle, Indented Printing (09A)



See DHM-35

DHM-32 3 7/8" Single Nail Puller, Indented Printing, Brass or Steel (09B)



See DHM-15

DHM-33 5" Equal Size Heads, Double Nail Puller in Handle, Raised Printing



DHM-34 5" Grooved Heads, Double Nail Puller in Handle, Raised Printing



See DHM-32

DHM-35 4 1/4" Hex Heads, Single Nail Puller, Indented Printing, Steel



See DHM-16

DHM-36 5 1/8" Notched Blade, Guide Along Double Hammers to Prevent Blade From Entering to Far Into Cigar Box, Flat Printing

Double Hammers (DHM)



See DHM-22

DHM-37 5 3/4" No Notch, Curved Pry Prongs, Raised Printing In Bossed Area



See DHM-16
& DHM-41

DHM-38 4 5/8" to 4 3/4" Nail Puller in Handle, Indented Printing



See DHM-07

DHM-39 4 1/8" No Notch, Raised Handle Between Heads, Indented Printing



DHM-40 4" Notched Blade, Indented Printing, No Hole, See DHM-03



See DHM-16
& DHM-38

DHM-41 4 5/8" to 4 3/4" Nail Puller in Handle, Recess Area in Hammer, Indented Printing



DHM-42 5 1/2" Notched Blade in Front of Heads, Flat Printing, Hole (See DHM-10)

Hatchets (HT)



HT-01 6 7/8" Full Head, Flat Printing on Blade



HT-02 6 5/8" Full Head, Raised Printing on Blade



HT-03 6 5/8" Full Head, Raised Printing on Blade, Hole

Hatchets (HT)



HT-04 6 3/8" Flat Head, Flat Printing on Handle



HT-05 6 7/8" Flat Head, Indented Printing on Handle



HT-06 5" Full Head, Indented Printing on Handle, Hole, May be Marked "Pat. Apd. For"

Hatchets (HT)



HT-07 4 5/8" Full Head, Flat Printing on Handle, With Bottle Opener



HT-08 4 5/8" Full Head, Raised Printing on Handle, With Bottle Opener



HT-09 4 3/4" Full Head, Raised Printing on Handle, With Bottle Opener With Bowed Ring

Hatchets (HT)



HT-10 4 3/4" Full Head, Indented Printing on Handle, With Bottle Opener



HT-11 4 1/2" Flat Head, Raised Printing on Handle, With Bottle Opener



HT-12 3 1/8" Notch in Head, Box Opening Blade is Handle, Brass

Hatchets (HT)



HT-13 12 1/2" Box Opener One End, Blade, Hammer, Metal Handle has Advertising "Cornbread Tobacco" on Edge Between Wood Grips

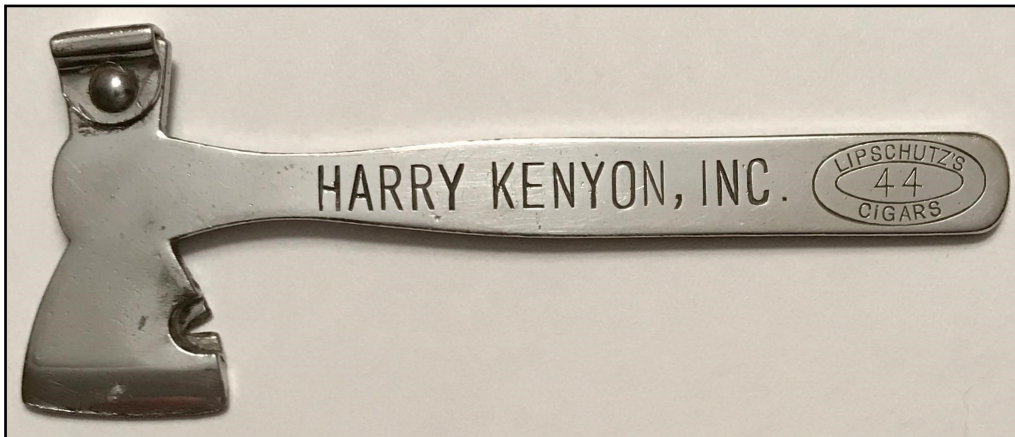


HT-14 6 5/8" Full Head, Flat Printing on Handle (01A)



HT-15 6 5/8" Full Head, Raised Printing on Blade and Handle, Hole (03A)

Hatchets (HT)



HT-16 5" Full Head, Indented Printing on Handle, May be Marked "Pat. Apd. For" (06A)



HT-17 8 1/8" Full Head, Raised Printing on Head, Embossed Handle Split Toward End (03B)



HT-18 4 1/2" Flat Head, Raised Printing on Handle, With Slightly Flattened Bottle Opener (11A)

Hatchets (HT)



HT-19 4 1/2" Full Head, Raised Printing on Handle



HT-20 4 3/8" Flat Short Head, Raised Printing on Handle, Old Cast Iron



HT-21 4 1/4" Full Head, No Markings, Hole

Hatchets (HT)



HT-22 6 7/8" Full Head, Raised Printing on Handle and Head, Large Heavy CBO



HT-23 6 3/4" Full Head, Flat Printing on Handle, Notch at Handle End, Aluminum



HT-24 6 5/8" Full Head, Raised Printing in Bossed Area

Hatchets (HT)



HT-25 4/3/8" Full Head, Recessed Printing on Handle

Hook Bottle Openers (HBO)



HBO-01 2 3/8" Gas Key, Hole (B-8)



HBO-07 3 1/4" Ring (B-5)



HBO-02 2 7/8" Hole (B-65)



HBO-08 3 1/4" Gas Key, Ring (B-42)



HBO-03 2 7/8" Gas Key, Hole (B-9)



HBO-09 3 1/4" Gas Key, Hole (A-19)



HBO-04 3" Gas Key, Hole (B-92)



HBO-10 3 3/4" Double Notch, Hole



HBO-05 2 7/8" No Notch Ring (B-6)



HBO-13 3 1/8" No Notch, Ring, Buttonhook

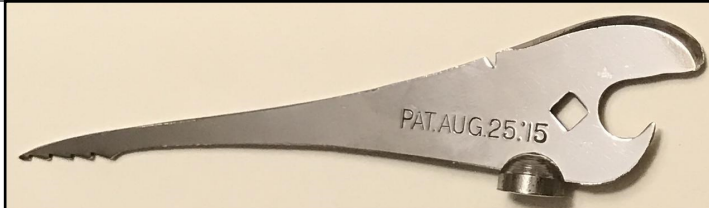


HBO-06 2 7/8" No Notch, Gas Key, Ring (B-46)



HBO-14 3 1/8" Gas Key, Ring, Brass

Hook Bottle Openers (HBO)



Note: Patent
not 8-25-1915
but 8-25-1914

HBO-11 5 1/2" Notch, Hammer, Gas Key, Cork Puller, Marked "Pat. Aug 25, '15"



HBO-12 5 1/2" Notch, Hammer, Screwdriver, Jar Opener, Hole Marked "Pat. -D-111564"



HBO-15 5 1/2" Notched Blade & Over-The-Top Bottle Opener, Hole



HBO-16 3" Rotating Cigar Cutter and Key Ring, Screwdriver Tip (B-72)

Hook Bottle Openers (HBO)



HBO-17 3 7/8" No Notch, Gas Key, Graduated Jar Opener, Screwdriver Tip (N-175)



HBO-18 3 1/8" No Notch, Screwdriver Tip (B-43)



HBO-19 2 3/4" No Notch, Screwdriver Tip, Cigar Cutter

Hook Heads (HKH)

Note Abbreviations (CNB Curved Notched Blade) (RBO Ring Bottle Opener)



HKH-01 4 1/2" CNB, Hammer, RBO, Flat Printing



HKH-02 4 5/8" CNB, Hammer, RBO w/ Tang, Flat Printing



HKH-03 4 1/4" CNB, Hammer, RBO, Raised Printing in Bossed Area



HKH-04 4 5/8" CNB, Hammer, RBO w/ Tang, Raised Printing in Bossed Area



HKH-05 4 1/2" CNB, Hammer, Bowed RBO, Raised Printing in Bossed Area



HKH-06 4 3/4" CNB, Hammer, Bowed RBO w/ Tang, Raised Printing in Bossed Area

Hook Heads (HKH)

Note Abbreviations (CNB Curved Notched Blade) (RBO Ring Bottle Opener)



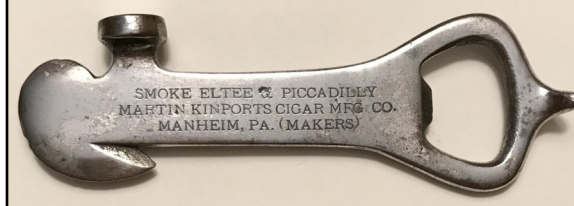
HKH-07 4 1/8" No Notch, Hammer, Nail Puller at Ring End, Raised Printing in Bossed Area



HKH-08 4" Notch, Hammer, Nail Puller at Ring End, Raised Printing in Bossed Area



HKH-09 4 1/2" CNB, Hammer, Ring, Raised Printing in Bossed Area (See HKH-12)



HKH-10 4 3/4" CNB with Hook Head Sharply Indented Below Hammer, RBO w/ Tang, Flat Printing (02A)



HKH-11 4 3/4" CNB, Squared Hammer, RBO, Raised Printing in Bossed Area (05A)



HKH-12 4" CNB, Hammer, Ring, Raised Printing in Bossed Area (See HKH-09)

Hook Heads (HKH)

Note Abbreviations (CNB Curved Notched Blade) (RBO Ring Bottle Opener)



HKH-13 5" Pointed End CNB, Hammer, Bowed RBO w/ Tang, Raised Printing in Bossed Area (See HKH-06)



HKH-14 4 3/8" CNB, Hammer, Gas Key, RBO, No Advertising (See HKH-03)



HKH-15 4" CNB, Hammer, RBO, Raised Printing, Brass



HKH-16 4 1/2" CNB, Hammer, RBO w/ Tang, Raised Printing in Bossed Area

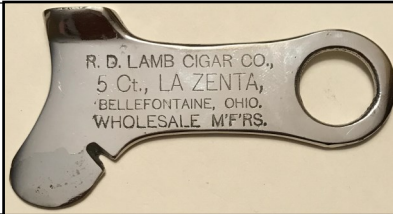


HKH-17 4 7/8" Notch, Short Hammer, Tear Drop Ring, Raised Printing in Bossed Area



HKH-18 4 1/2" Notch, Short Hammer, Ring, Raised Printing in Bossed Area

Horse Heads (HOR)



HOR-01 3 7/8" Notched Blade, Hammer Head, Ring, Flat Printing



HOR-02 3 7/8" Notched Blade, Hammer Head, Small Ring, Indented Printing



HOR-03 3 5/8" Notched Blade, Hammer Head, Hole, Raised Printing in Bossed Area

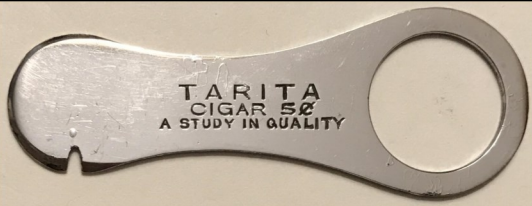


HOR-04 4 5/8" Notched Blade, Hammer Head, No Ring, Flat Printing



HOR-05 4 1/8" Notched Blade, Hammer Head, Bottle Opener, Flat Printing

Miscellaneous (MIS)



MIS-01 3 1/8" Notched Blade, Ring Handle MIS-02 3 1/8" Notched Blade w/ Shoulders, RH



MIS-03 4 1/2" Notched Blade, Double Boss Hammer, Marked "Pat. 5-9-16"



Side View

MIS-04 2 3/8" Notched Blade, Cap Lifter Bottle Opener (N-49)



MIS-05 5 7/8" Notched Blade, Screwdriver, Double Cap Lifter, Marked "Pat'd 10-23-06"



MIS-06 5 3/4" Notched Blade, Hammer, (See SEP-12)



MIS-07 6 3/4" Notched Blade, Hammer, Indented Printing, Aluminum

Miscellaneous (MIS)



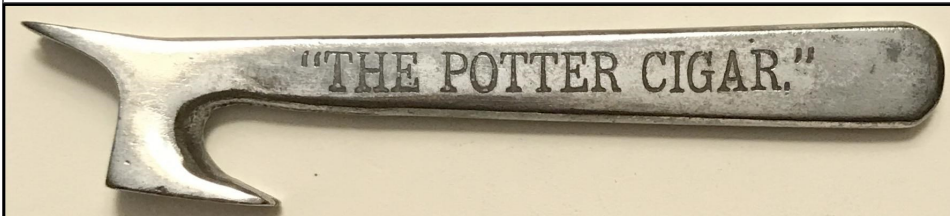
MIS-08 6 3/4" Notched Blade, Hammer, Round or Flat Handle Like Cigar with Label



MIS-09 5" Notched Blade, Hammer, Curved Pistol Grip Handle, Flat Printing



MIS-10 7" Notched Blade, Extended Hammer, Letter Opener, Flat Printing



Footed Hammer View

MIS-11 4 5/8" Notched Blade, Notched Footed Hammer, Flat Printing



MIS-12 4 5/8" to 5 1/4", Notched Blade, Cigar Cutter, Applied Rosewood Panels



M-13 Left with Patent Date

M-14 Right without Patent Date



MIS-13 & M-14 3 3/4", Notched Blade, Head is Hammer, Patent Date Feb. 19, '95

Miscellaneous (MIS)



MIS-15 6 1/4" Notched Blade, Pike Tip with Blade and Hammer, Indented Printing

Tapered
Head Slits
Box Seal



MIS-16 3 3/4" Nail Notch in Center, Raised Printing in Bossed Area, Hole, Brass



MIS-17 & 17A 3 3/4" Box Opener, Box Cover Prop, Nail Puller



MIS-18 2 5/8" Box Opener, Pipe Tamper, No Notch Blade, Hammer, Raised Printing



MIS-19 5 5/8" Thin Slicing Blade, No Notch, No Hammer, Flat Printing, Hole



MIS-20 5 1/2" Notched Blade, Curved Wood Insert Handle, Hammer (New Laguiole France)

Miscellaneous (MIS)

Marked "Williamson & Co Newark NJ"



MIS-21 3 1/8" Notched Blade, Reversing Bullet Shaped



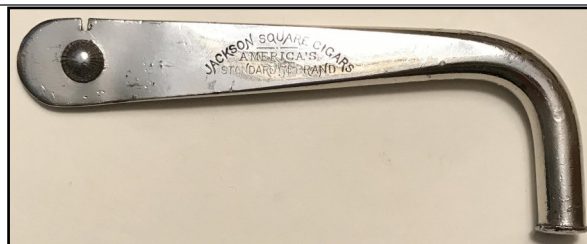
MIS-22 6 1/4", Notched Blade, Cigar Cutter, Brass Handles



MIS-23 6" Notched Blade, No Hammer, Round Handle Like Cigar with Embossed Label



MIS-24 4 7/8" No Notch, Teethed Edge Footed Hammer, Curved Handle, Indented Printing



MIS-25 5 1/4" Notched Blade, Hammer, Curved Pistol Grip Handle, Indented Printing



MIS-26 7 1/2" Notched Blade, Three Cigar Cutter Holes as Pliers, Sterling Handle

Miscellaneous (MIS)

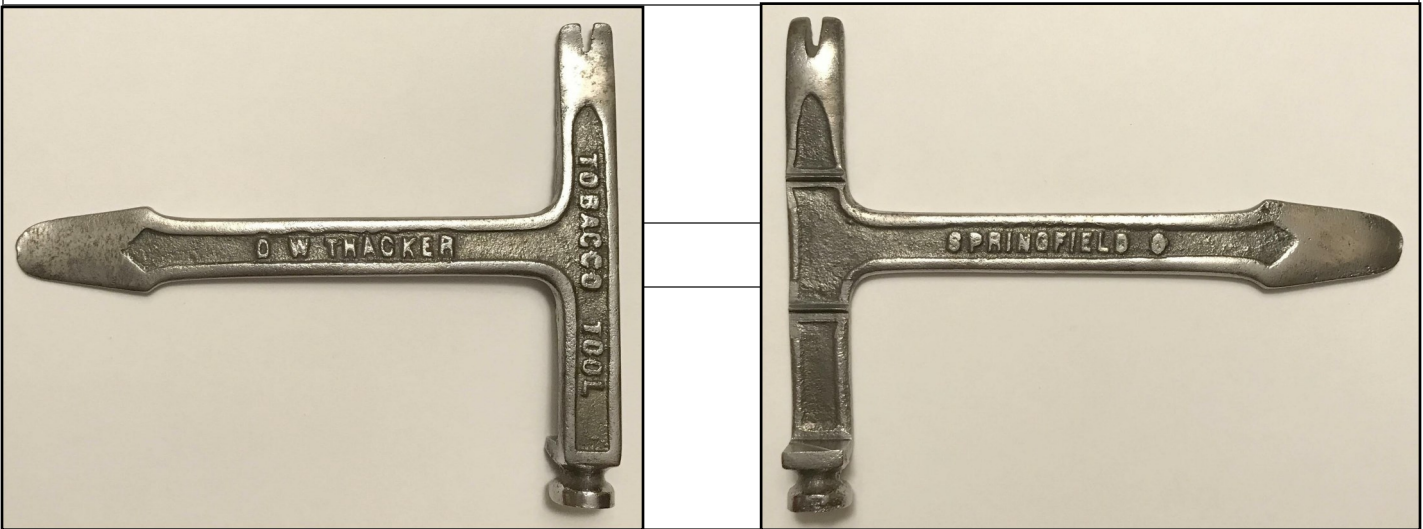


Back side is blank and has small key ring hole

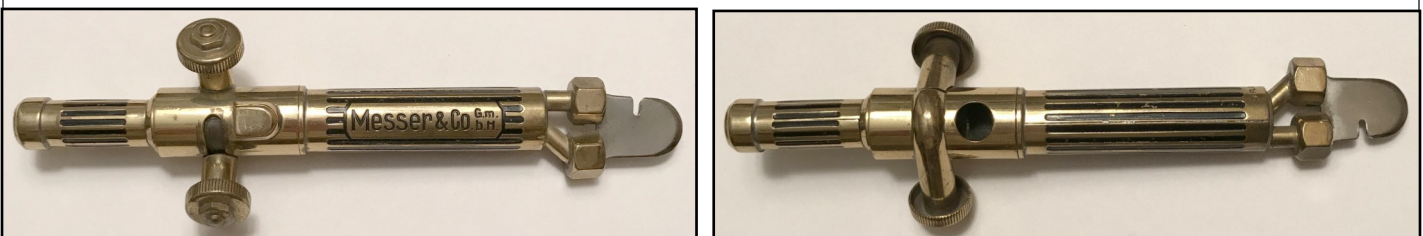
MIS-27 1" The Takrays CBO, Patented Feb. 12, 1901, Twist To Loosen Nail



MIS-28 6 3/4" Notched Blade, Flat Hammer, Pry-Bar End, Raised Printing



MIS-29 7 1/4" Notched Curved Blade, Round Hammer, Pry-Bar End, Raised Printing



MIS-30 7 1/2" Notched Blade, Cigar Cutter Holes, Brass Handle, Indented Printing

Miscellaneous (MIS)



MIS-31 7 1/2" to 8 1/2", Notched Blade, Hammer, Cigar Cutter, Various Handle Materials



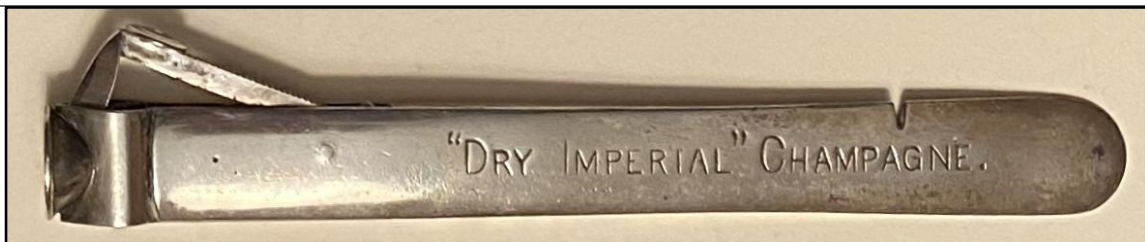
MIS-32 6", Notched Blade, Cigar Cutter, Various Handle Materials



MIS-33 4 1/8" (Opened), Push Button Notched Blade, Cigar Cutter, Steel Case



MIS-34 7 1/4", Notched Blade, Hammer, Cigar Cutter, Various Handle Materials



MIS-35 5 1/8", Notched Handle Blade, Cigar Cutter, Various Handle Materials

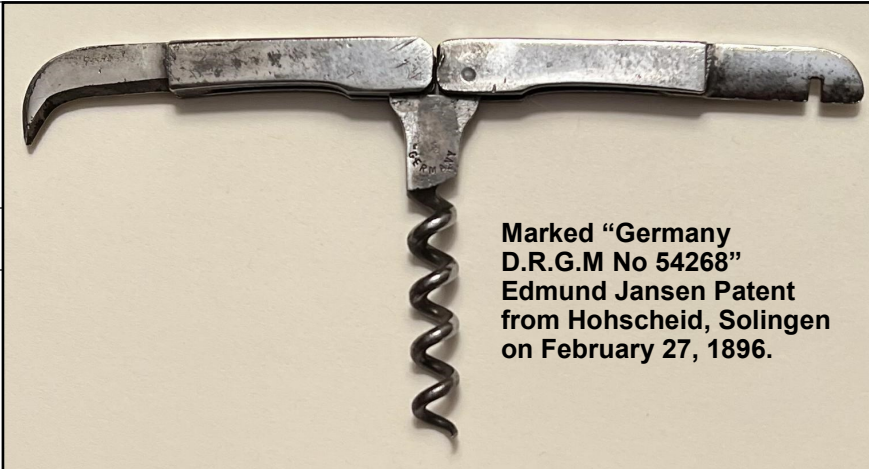


MIS-36 2 1/4" Box Opener, Universal Key Ring, Indented Printing

Miscellaneous (MIS)



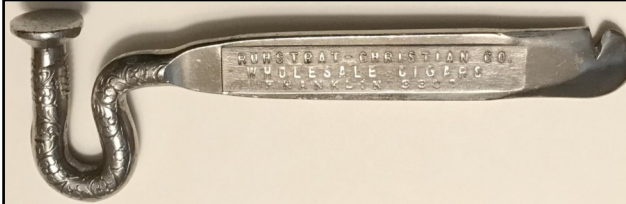
MIS-37 3", Cigar Box Lid Lifter, Brass



MIS-38 2 3/8" (Closed), Folding Corkscrew, CBO End, Wire Cutter Blade End

Nails (NL)

Note Abbreviations (NB Notched Blade)



NL-01 5 1/2" NB, Embossed Rail Head Hammer, Raised Printing In Bossed Area



NL-02 5 5/8" NB, Embossed Rail Head Hammer, Raised Printing In Bossed Screen Area



NL-03 5 3/8" NB, Embossed Rail Head Hammer, Raised Printing, Marked "Pat'd 12.7.97."



NL-04 5 1/8" NB, Embossed Rail Head Hammer, Raised Printing, Marked "Pat'd 12.7.97."



NL-05 5 3/4" NB, Rail Head Hammer, Raised Printing



NL-06 5 7/8" NB Paddle Shaped, Straight Nail Head Handle, Indented Printing

Nails (NL)

Note Abbreviations (NB Notched Blade)



NL-07 5 3/4" NB, Embossed Rail Head Hammer, Hook Bottle Opener, Raised Printing



NL-08 5 1/4" NB, Embossed Serpent Head Hammer, Raised Printing, Brass



NL-09 5 3/4" NB, Indented Printing

Pocket Knives (PKT)

- PKT-01: Notched Blade, Single Blade, Indented Printing
PKT-02: Notched Blade, Single Blade, Etched Printing
PKT-03: Notched Blade, Single Blade, Cigar Cutting Slot, Etched Printing
PKT-04: Notched Blade, Single Blade, Full Cigar Cutting Hole, Indented Printing
PKT-05: Notched Blade, Single Blade, Hook Bottle Opener in Notch Blade, Full Cigar Cutting Hole, Indented Printing
PKT-06: Notched Blade Folds Into Long Oval Handle, Indented Printing
PKT-07: Notched Blade Folds Into Straight Bar Handle, Indented Printing
PKT-08: Notched Blade, Wooden Handle, Round Hammer, Blade Marked "Pat'd Oct 27, 1868"
PKT-09: Notched Blade & Knife Blade, White Bond Handle, Slightly Extended Hammer, Appeared in 1892 Geo. Zorn & Co. Catalog
PKT-10: Notched Blade Folds Into Handle with Expanded Base to Act as a Hammer, Flat Printing, Appeared in 1907 Brunhoff Catalog
PKT-11: Notched Handle Rather Than a Blade, Both Form 6" Ruler When Extended, Nail File on Reverse of Blade, Cigar Tip Nipper
PKT-12: Notched Blade with Bottle Opener, Single Blade, Indented Printing
PKT-13: Notched Blade with Bottle Opener & Gas Key, Single Blade, Indented Printing
PKT-14: Notched Blade & Knife Blade, Wooden Handle, Square Hammer
PKT-15: Notched Blade & Knife Blade, Celluloid Handle, Square Hammer, Recently Made
PKT-16: Notched Blade & Knife Blade & Corkscrew, Wooden Handle, Square Hammer
PKT-17: Notched Blade, Single Locking Blade, Metal Handle, Hammer Button
PKT-18: Notched Blade & Bottle Opener, Sliding Cigar Cutter, Recently Made
PKT-19: Notched Blade, Three Blades (Master & Wire Cutter), Hammer Button
PKT-20: Notched Blade, Single Blade, Toggle Button Cigar Cutter, Pearl Handle
PKT-21: Notched Blade Spring Loads into Case with Sliding Cover, Mark "Patent"
PKT-22: Notched Blade, Four Blades (Corkscrew, Master & Wire Cutter), Hammer Button
PKT-23: Notched Blade, Five Blades (Corkscrew, Master, Pen & Wire Cutter), Stag Handles
PKT-24: No Notch Blade, Four Blades (Corkscrew, Master & Wire Cutter), Hammer Button
PKT-25: Notched Blade, Six Blades (Corkscrew, Master, Pen, File & Awl), Wood Handles
PKT-26: Notched Screwdriver Blade, Four Blades (Master, File & Pick), Cigar Cutter, Steel Handles
PKT-27: Notched Blade, Single Blade, Hook Bottle Opener in Notch Blade, Indented Printing
PKT-28: Notched Blade, Single Blade, Hammer, Various Handle Materials

Pocket Knives (PKT)



PKT-01 4 1/8"



PKT-02 3 5/8"



PKT-03 3 3/4"



PKT-04 3 5/8"



PKT-05 3 3/4"



PKT-06 4 1/4" (Open)



PKT-07 4 1/4" (Open)



PKT-08 3 1/2" (1868 Patent)



PKT-09 3 3/4"



PKT-10 3 5/8" (Closed)



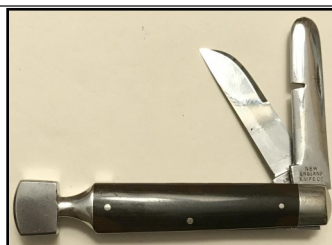
PKT-11 3 1/2"



PKT-12 4 1/8"



PKT-13 3 3/4"



PKT-14 3 3/8"



PKT-15 3 3/4"



PKT-16 3 7/8"



PKT-17 5" to 5 1/4"



PKT-18 4 1/4"

Pocket Knives (PKT)



PKT-19 3 1/2"



PKT-20 3 1/4"



PKT-21 3 1/8" (Closed)



PKT-22 3 13/16"



PKT-23 4"



PKT-24 3 1/2"



PKT-25 3 1/4"



PKT-26 3 1/4"



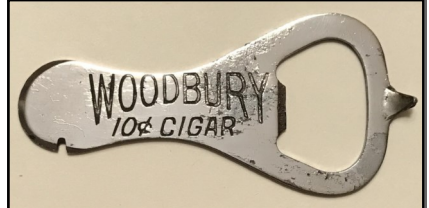
PKT-27 3 5/8"



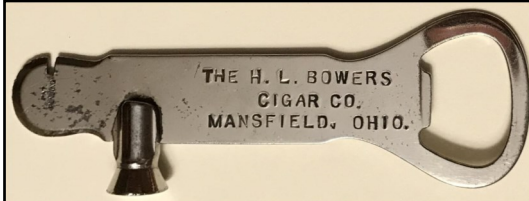
PKT-28 6"

Ring Bottle Openers (RBO)

Note Abbreviations (NB Notched Blade, BO Bottle Opener)



RBO-01 3 1/8" NB, BO (C-31) RBO-02 3 1/8" NB, BO, Gas Key RBO-03 3 3/8" NB, BO, Tang



May Be Marked
"Pat. Pending"

RBO-04 3 1/8" NB, Hammer, BO, (Most Common CBO), Indented Printing



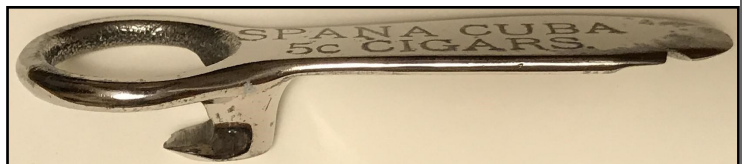
RBO-05 5 1/2" NB, BO, Raised Printing



RBO-06 8" NB with Hook BO, Hammer, BO, Raised Printing



RBO-07 7 7/8" NB, Hammer, BO, Raised Printing



Side View

RBO-08 4 3/8" NB, Raised BO, Flat Printing

Ring Bottle Openers (RBO)

Note Abbreviations (NB Notched Blade, BO Bottle Opener)



Marked "Pat'D 2-6-94
Others Pending"
Date is William Painter's
Patent Date For First
Bottle Opener.

RBO-09 3 3/8" NB, Sliding Cigar Cutter, Flat BO, Indented Printing

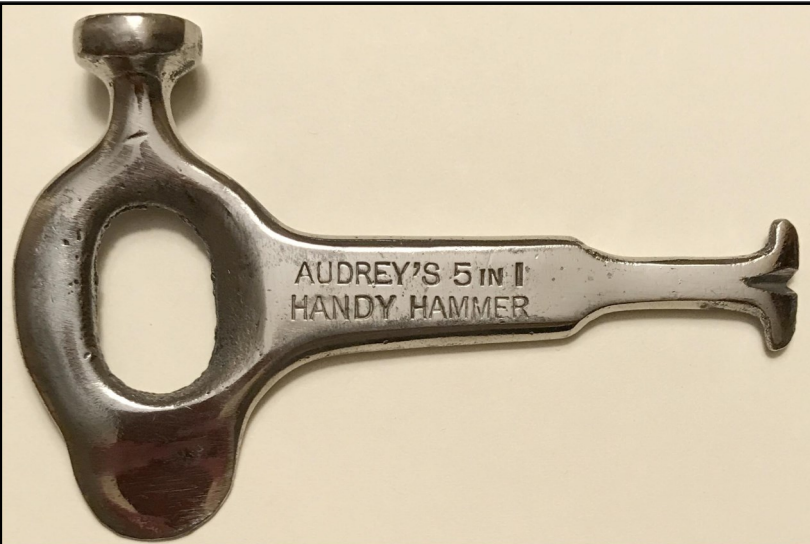


Left: Marked
"Pat'D 10.12.09".

Right: Marked w/
1894 & 1909
Patent Dates.



RBO-10 3 3/8" as RBO-09 w/ Diamond Gas Key RBO-14 3 3/8" as B-10 w/ Square Gas Key



RBO-11 4 1/4" No Blade Notch, Hammer, Tobacco Plug Lifter w/ Notch In Tip, BO, Indented Printing



RBO-12 4 1/8" NB, BO w/ Tang, Hammer, Screwdriver, Raised Printing



May be
Marked "Pat.
Feb.6.1894".
Painter Patent
Date.

RBO-13 3 1/4" Notch and Shoulder Blade, Full Width BO, Indented Printing

Ring Bottle Openers (RBO)

Note Abbreviations (NB Notched Blade, BO Bottle Opener)



RBO-15 4 3/4" Pry Bar (Screwdriver) End, BO with 2 Frets, Raised Printing



RBO-16 4 7/8" Pry Bar (Screwdriver) End, BO with 3 Frets, Raised Printing

Round Heads (RND)

Note Abbreviations (RBO Ring Bottle Opener)



RND-01 5 1/2" Notched Head, Raised Boss Hammer, RBO w/ Tang, Flat Printing



RND-02 5 3/8" Notched Head, Raised Boss Hammer, RBO w/ Tang, Raised Printing, Bronze



RND-03 3 1/4" Notched Blade, Curved Hammer Head, RBO, Indented Printing



Marked "Pat.
Aug. 6, '89".

RND-04 3 3/8" Notched Blade, Curved Hammer Head, Ring Handle, Indented Printing



RND-05 5 1/2" Notched Head, Raised Boss Hammer, Bar Handle, Flat Printing



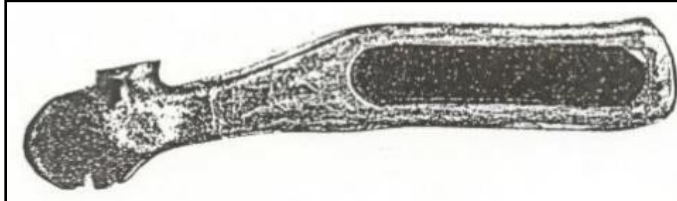
RND-06 4 5/8" Notched Head, Raised Boss Hammer, Oval Handle, Flat Printing

Round Heads (RND)

Note Abbreviations (COHPAUC Cut-Out Handle w/ Paper Advertising Under Celluloid)



RND-07 4 3/4" Round Notched Head, Round Hammer Top, COHPAUC



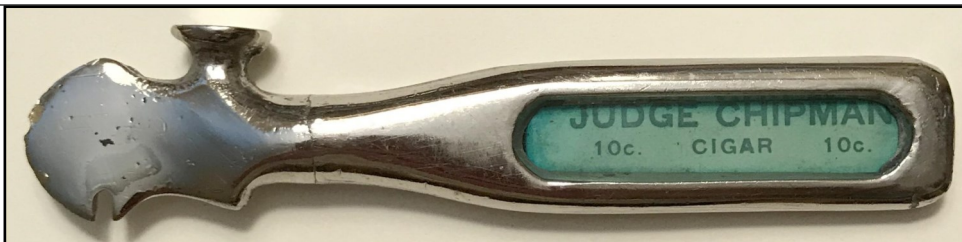
RND-08 4 1/2" Round Notched Head, Curved Handle, Round Hammer Top, COHPAUC



RND-09 4 1/2" Rounded Notched Blade, Round Hammer Top, COHPAUC



RND-10 4 1/2" Round Notched Head, Oval Hammer Top, Oval Handle, COHPAUC



RND-15 4 3/4" "Swelled" Notched Head, Round Hammer Top, COHPAUC



RND-16 4 5/8" Pointed Rectangular Notched Head, Rectangular Hammer Top, COHPAUC

Round Heads (RND)

Note Abbreviations (RBO Ring Bottle Opener)



RND-11 4 1/4" Round Notched Head, Oval Hammer Top, Leather Wrapped Handle



RND-12 4 3/8" Round Notched Head, Round Hammer Top, Figural Woman, Raised Printing



RND-13 5 1/2" Notched Head, Large Curve Under Hammer, Bar Handle, Indented Printing



RND-14 5 1/2" Notched Head, Raised Boss Hammer, Bar Handle, Recessed Printing

Separate Handles (SEP)

Note Abbreviations (RBO Ring Bottle Opener)



SEP-01 5 7/8" Notched Butter-Knife Blade, Hammer, Round Wood Handle, Black Printing



SEP-02 7 1/4" Notched Blade w/ Double Hammers, Horn Handle, Flat Printing



SEP-03 6 1/2" Curved Notched Blade w/ Hammer, Horn Handle, Flat Printing



SEP-04 7 1/8" Curved Notched Blade w/ Hammer, Wood Handle, Black Printing



SEP-05 7 1/4" Long Notched Blade, Round Hammer, Wood Handle, Indented Printing



SEP-06 7 1/2" Long Notched Blade, Round Hammer, Wood Handle, Indented Printing

Separate Handles (SEP)

Note Abbreviations (RBO Ring Bottle Opener)



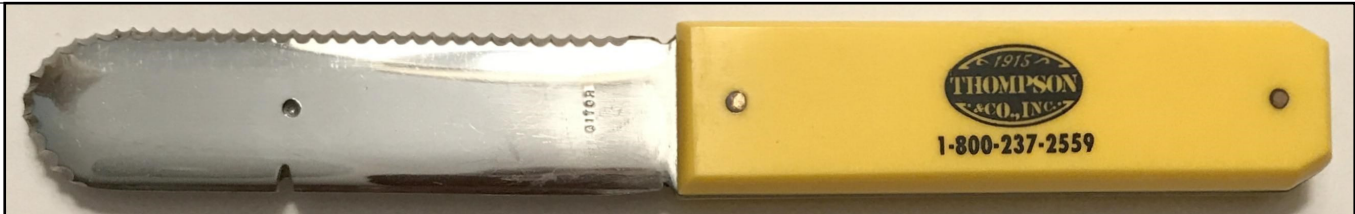
SEP-07 5 5/8" Notched Blade, Bar w/ Wood Insert Handle, Indented Printing



SEP-08 7 3/4" Letter Opener, Notched Blade w/ Hook Bottle Opener, Wood Handle



SEP-09 5 3/4" Notched Blade Set Into Red Plastic Handle, White Printing



SEP-10 8" Notched Serrated Blade Set Into Yellow Plastic Handle, Black Printing



SEP-11 6" Notched Butter-Knife Blade, Celluloid Handle w/ Litho Printing



SEP-12 5 7/8" Notched Blade w/ Hammer, Tapered Celluloid Handle w/ Litho Printing

Separate Handles (SEP)

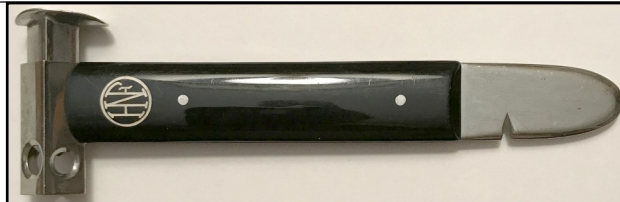
Note Abbreviations (RBO Ring Bottle Opener)



SEP-13 5 3/4" Curved Notched Blade w/ Hammer, Applied Wood Handle, Indented Printing



SEP-14 7 3/4" Pointed Notched Blade, Hammer, Wood Handle, Indented Printing



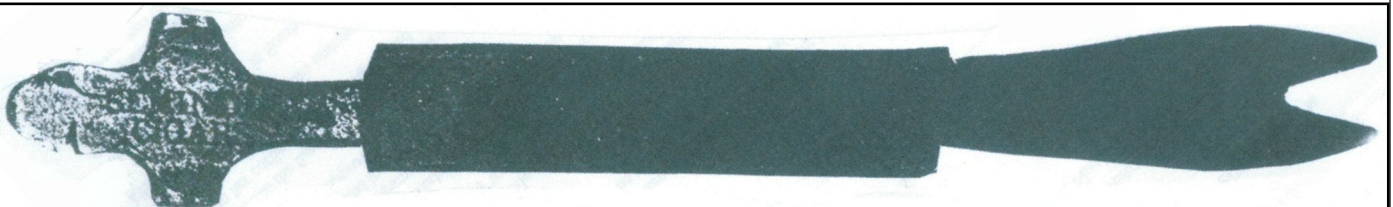
SEP-15 6 1/2" Notched Blade, Cigar Cutter, Various Handle Types, Engraved Printing



SEP-16 7 1/8" Notched Blade in Axe Head, Hammer, Wood Handle, Red Printing



SEP-17 7 3/4" Notched Blade, Hammer, Ivory Handle, Indented Printing (See Sep-46)



SEP-18 10 1/8" Notched Blade w/ Double Hammers, Wood Handle, Pry Blade

Separate Handles (SEP)

Note Abbreviations (RBO Ring Bottle Opener)



SEP-19 6 1/4" Notched Blade w/ Hammer, Sterling Handle, Corkscrew, Wire Cutter



SEP-20 5 1/2" Notched Blade, Wood Handle, Indented Printing



May Have Cigar
Cutter Blades in
Handle End

SEP-21 5" Notched Blade w/ Hammer, Celluloid Handle w/ Litho Printing



SEP-22 5 3/4" Notched Butter-Knife Blade, Hammer, Square Wood Handle, Black Printing



SEP-23 6 5/8" Notched Blade w/ Bottle Opener, Hammer, Square Wood Handle



SEP-24 7 7 1/4" Notched Blade w/ Double Hammers, Wood Handle, Black Printing

Separate Handles (SEP)

Note Abbreviations (RBO Ring Bottle Opener)



SEP-25 7 1/4" Long Notched Blade, Square Hammer, Wood Handle, Indented Printing



SEP-26 7 1/2" Long Notched Blade, Hammer, Brass Handle, Raised Printing



SEP-27 6" Notched Blade w/ Hammer, Celluloid Handle w/ Litho Printing



SEP-28 5 7/8" Notched Blade, Hammer, Wood Handle, Indented Printing (New)



SEP-29 6 1/2" Notched Blade, Tobacco Cutting Tool, Wood Handle, Advertising Metal Tag



SEP-29 Notched Blade View

Separate Handles (SEP)

Note Abbreviations (RBO Ring Bottle Opener)



SEP-30 6 3/8" Notched Blade w/ Bottle Opener, Cigar Cutter, Corkscrew, Sterling Handles



SEP-31 5 3/8" to 5 1/2" Notched Blade, Cigar Cutter, Corkscrew, Sterling Handles



SEP-32 5 3/8" Notched Blade, Hammer, Cigar Cutter, Corkscrew, Sterling Handles



SEP-33 9 7/8" Notched Blade, Hammer, Nail Puller, Animal Foot Handle



SEP-34 7 3/4" Notched Blade, Hammer, Pry-Bar End, Stag Handle, Sterling Fittings



SEP-35 4" Notched Blade, Pry-Bar End, Wood Handles

Separate Handles (SEP)

Note Abbreviations (RBO Ring Bottle Opener)



SEP-36 6" Serrated Blade, Pry Hook, Celluloid Handle, Indented Printing



SEP-37 6 7/8" Long Notched Blade, Square Hammer, Wood Handle, Indented Printing



SEP-38 7 3/8" Long Notched Blade, Square Hammer, Wood Handle, Indented Printing



SEP-39 6 1/2" Long Notched Blade, Rectangular Hammer, Wood Handle, Indented Printing



SEP-40 9" Long Notched Blade, Long Square Hammer, Wood Handle

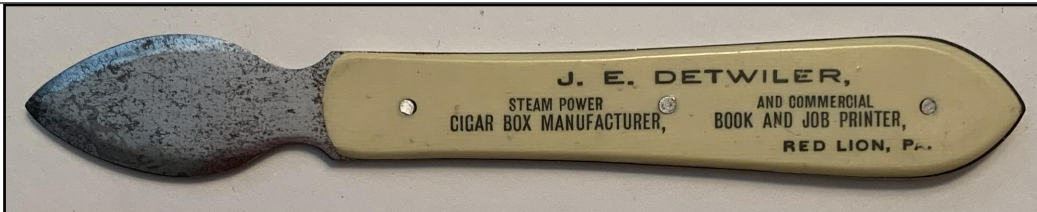
Special Note:

Similar Wood Handles: 05, 06, 14, 17, 25, 37, 38, 39, 40

Usual difference is the hammer shape but can be handle material or blade shape

Separate Handles (SEP)

Note Abbreviations (RBO Ring Bottle Opener)



SEP-41 4 3/4" No Notch Blade, Celluloid Handle, Flat Printing



SEP-42 5 1/2" Notched Blade, Hammer, Cigar Cutter, Various Handle Materials



SEP-43 6 3/8" Notched Blade, Large Hammer, Nail Puller, Various Handle Materials



SEP-44 6" Notched Blade, Hammer, Nail Puller, Various Handle Materials & Shapes



SEP-45 5 1/2" Notched Blade, Hammer, Cigar Cutter, Ornate Silver Handle



SEP-46 8 1/2" Notched Blade, Hammer, Silver Handle, Indented Printing (See Sep-17)

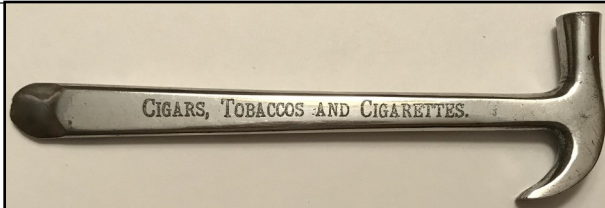
Separate Handles (SEP)

Note Abbreviations (RBO Ring Bottle Opener)



SEP-47 8 1/4" Large Notched Blade, Chrome Handle, "Gerard Pere Et Fils Geneve"

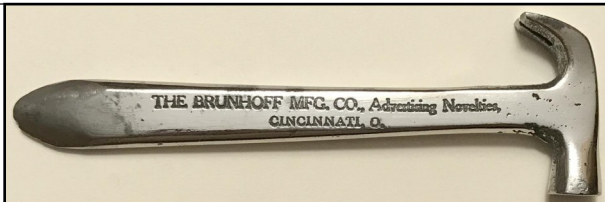
Single Hammers (SHM)



SHM-01 6 3/4" Large Hammer, Claw, Flat Printing



SHM-02 6 1/2" Large Hammer, Notched Blade, Wood Covered Handle, Indented Printing



SHM-03 4 1/4" Small Hammer, Claw, Flat Printing



SHM-04 4 3/8" Small Hammer, Claw, Raised Printing



SHM-05 4 5/8" Small Hammer, Claw, Rounded Head, Wider Blade, Raised Printing



SHM-06 4 7/8" Small Hammer, Claw, Hook Bottle Opener at End of Blade, Raised Printing

Single Hammers (SHM)



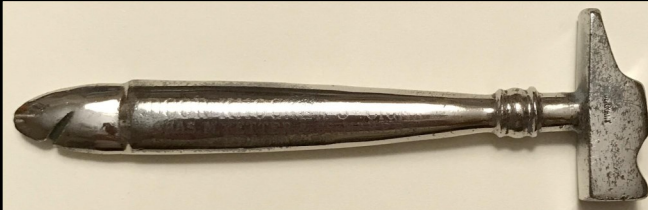
SHM-07 4 1/2" Small Hammer, Claw, Indented Printing



SHM-08 4 5/8" Small Hammer, Notched Blade, Flat Printing



SHM-09 4 3/4" Small Hammer, "Hour-Glass" Notched Blade, Flat Printing



See DHM-30

SHM-10 4 1/2" Small Hammer, Notched Blade, Collar Below Head, Flat Printing



SHM-11 4 3/8" Small Hammer, Notched Flared Blade, Indented Printing



See SHM-32

SHM-12 5" Small Hammer, Notched Blade Above Head, Cut-Out Handle, Flat Printing

Single Hammers (SHM)



SHM-13 5 7/8" Large Hammer, "Bullet" Peen, Notched Blade, Indented Printing



SHM-14 4 3/8" Small Figural Hammer, Notched Blade, Raised Printing



SHM-15 3 1/8" Curved Hammerhead, Blade w/ No Notch, Etched Printing, Hole

Single Hammers (SHM)

Cigar Cutter
Between Head
and Claw



SHM-16 5" Small Hammer w/ Cigar Cutter, Notch Below Long Blade, Etched Printing



SHM-17 6 3/4" Large Heavy Hammer, Hook Bottle Opener & Blade Other End, Flat Printing



SHM-18 6 3/8" Notch On End of Blade Opposite Hammer, Can Opener/Knife, Corkscrew



SHM-19 6 3/4" to 7 1/4" Notch At Blade, Hollow Handle, Hammerhead w/ Pointed Peen

Single Hammers (SHM)



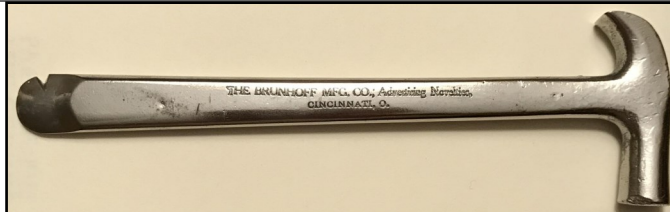
SHM-20 5 3/4" Notch in Blade w/ Molded Hammer, Solid Handle, Indented Printing



SHM-21 4 5/8" Small Hammer, Larger Notched at End of Blade, Flat Printing (09A)



SHM-22 4 5/8" Small Hammer, Notched Blade, Wood Handle, Indented Printing (10A)



SHM-23 6 5/8" Large Hammer, Notched Blade, No Claw, Flat Printing



SHM-24 4 5/8" Large Hammer, Notched Blade, Claw



SHM-25 4 1/8" Small Hammer, Claw, Raised Printing in Smaller Bossed Area

Single Hammers (SHM)



SHM-26 4 3/8" Large Recessed Hammer, Claw, Raised Printing



SHM-27 3 3/4" Small Hammer, Claw, Rounded Head, Wider Blade, Raised Printing



SHM-28 5 3/8" Small Hammer, Ball Peen, Notched Blade, Raised Printing, Hole



SHM-29 4 3/4" to 5" Small Hammer, Ball Peen, Notched Blade, Indented Printing



See DHM-10

SHM-30 4 1/2" Small Hammer, Notched Blade, Collar Below Head, Flat Printing

Single Hammers (SHM)



SHM-31 4 5/8" Small Hammer, Claw, Curved Notched Blade, Corkscrew, Pearl Handles, Recessed Printing, German Design Patent No. 42,057 (06/18/1895) to Justus Brenger & Co

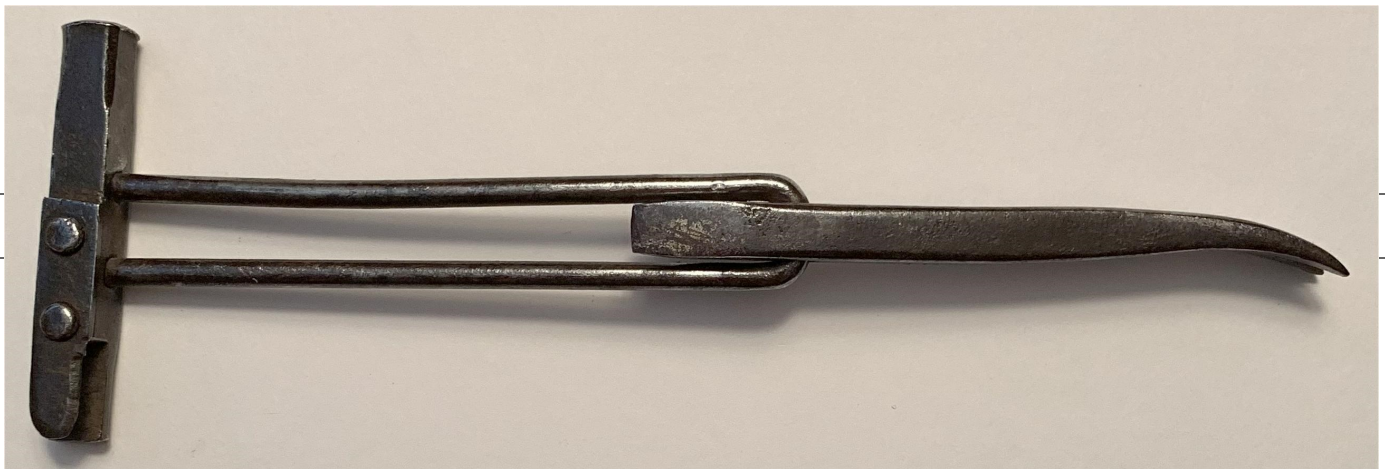


See SHM-12

SHM-32 5" Small Hammer, Notched Blade Above Head, Cut-Out Handle, Raised Printing



SHM-33 4 5/8" Notched Blade, Graduated Jar Opener, Hammer, Jos. M. Seed New York



SHM-34 8" (Opened) No Notch Blade, Hammer, Wire Handle, Folding Pry Bar

Square Heads (SQR)



SQR-01 5 1/2" Notched Blade, Rectangular Head w/ Serrated Edge, Indented Printing



SQR-02 5" Notched Blade, Rectangular Head w/ Serrated Edge, Indented Printing



SQR-03 5 1/2" Notched Blade, Squarer Head w/ Serrated Edge, Flat Printing



SQR-04 4 7/8" Notched Blade, Squarer Head, Raised Printing in Bossed Area



SQR-05 5" Parallel Notch at Curved Handle End, Squarer Head, Flat Printing on Handle



SQR-06 5 3/8" Notched Blade, Squarer Head, Raised Printing in Bossed Area, Aluminum

Homemade Cigar Box Openers

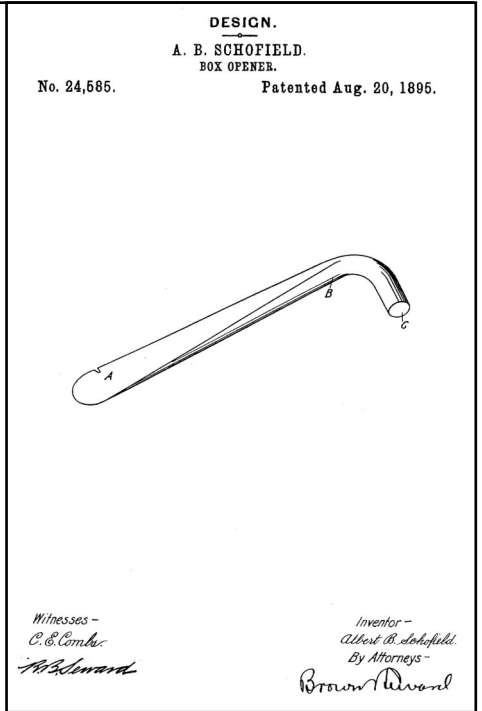
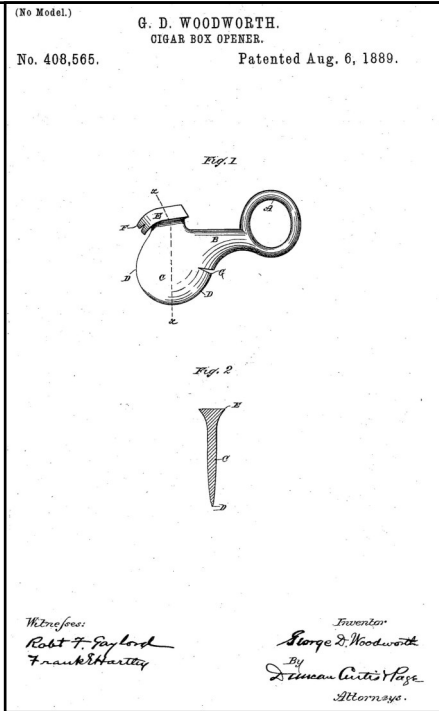
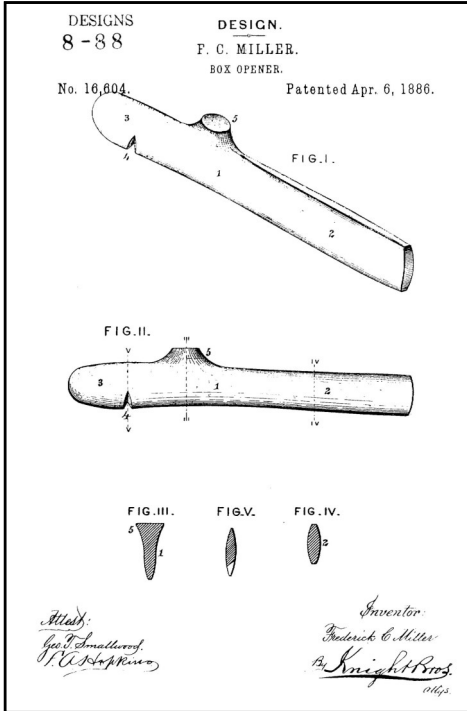


RBO-06 with Modified CBO end

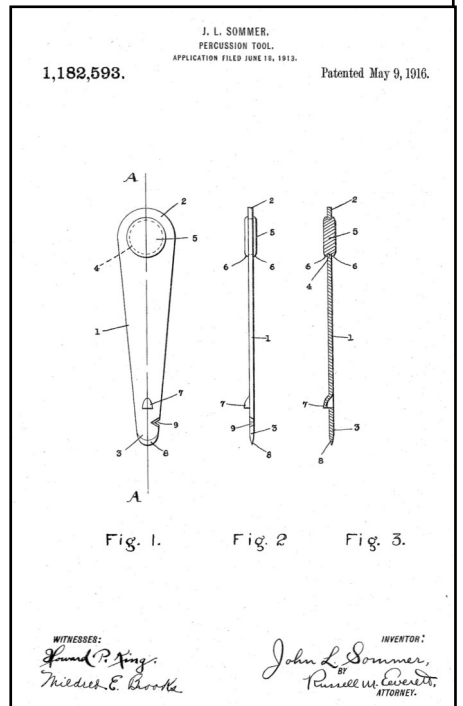
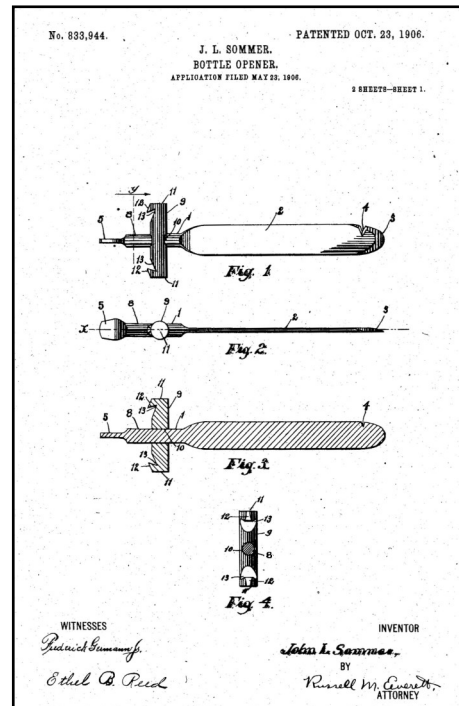
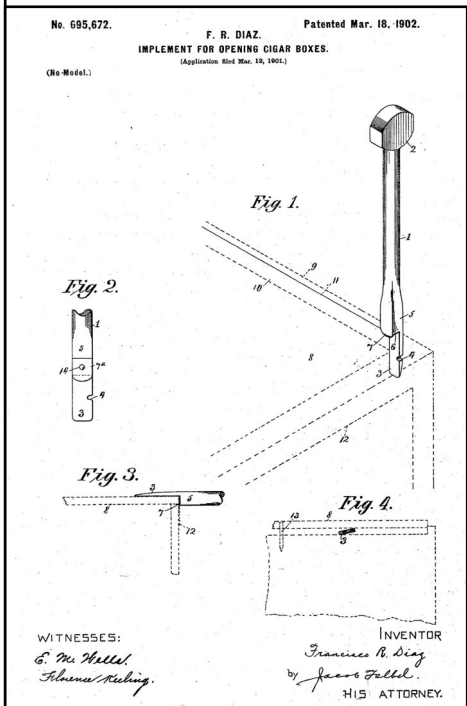


SEP-03 with Wooden Handle Added

Patented Cigar Box Openers

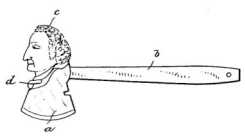


- 1) Frederick C. Miller of Newport, KY, April 6, 1886 for a "Box Opener", BB-19.
- 2) George D. Woodworth of Brooklyn, NY, August 6, 1889 for a "Cigar-Box Opener", RND-04.
- 3) Albert B. Schofield of Brooklyn, NY, August 20, 1895 for a "Box Opener", MIS-25
- 4) Francisco R. Diaz of Tampa, FL, March 18, 1902 for an "Implement For Opening Cigar-Boxes", DHM-16
- 5) John L. Sommer of Newark, NJ, October 23, 1906 for a "Bottle Opener", MIS-05
- 6) John L. Sommer of Newark, NJ, May 9, 1916 for a "Percussion Tool", MIS-03



Patented Cigar Box Openers

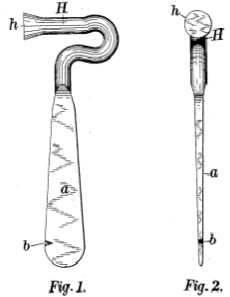
DESIGN.
E. B. IVES & C. A. HOTCHKISS.
HATCHET.
No. 24,056. Patented Feb. 19, 1895.



WITNESSES
H. A. Lamm
S. V. Richardson

INVENTORS
Edward R. Ives and Charles A. Hotchkiss
By A. M. Wroton

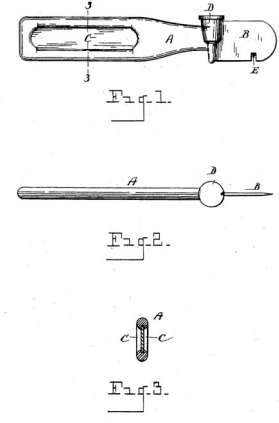
DESIGN.
J. L. SOMMER.
HAMMER.
No. 27,949. Patented Dec. 7, 1897.



Attest.
H. H. F. Walker
Louis Knickham

Inventor.
John L. Sommer per
Henry J. Miller

DESIGN.
No. 31,812. J. S. BARNES. Patented Nov. 7, 1899.
ADVERTISING CIGAR BOX OPENER.
(Application filed July 25, 1899.)



WITNESSES
W. H. Wray
John S. Barnes


INVENTOR.
John S. Barnes
By Hugh M. Ross
Attorney.

- 7) Edward R. Ives & Charles A. Hotchkiss of Bridgeport, CT, February 19, 1895 for a "Hatchet", MIS-13 & 14
- 8) John L. Sommer of Newark, NJ, December 7, 1897 for a "Hammer", NL-03 & 04
- 9) John S. Barnes of Detroit, MI, Nov. 7, 1899, for a "Design For An Advertising Cigar-Box Opener", RND-09

10) Clayton H. Blantz of Lebanon, PA, August 25, 1914 for a "Tool", HBO-11 (Marked Aug 25 '15)

DESIGN.
C. H. BLANTZ.
TOOL.
APPLICATION FILED JUNE 14, 1914. Patented Aug. 25, 1914.

46,310.



Witnesses
Frank Hough
A. F. Foster

Inventor
Clayton H. Blantz
By Victor J. Evans
Attorney

THE LIFE AND TIMES OF THE CIGAR BOX OPENER by Glen Enloe

The enigma surrounding what has commonly been christened the “cigar box opener” goes back, as far as we can determine, to just after the Civil War. As the fortunes and popularity of the cigar rose dramatically during the war between the states, so did the need for a tool that could be used to pry open the wooden box, extract the small nails that held it and hammer the box shut to protect the freshness of the remaining cigars. This may be where we derived the term “coffin nails” in reference, years later, to cigarettes.

One of the first traces of a tool made specifically to open a cigar box dates back to a patent issued October 13, 1868. That patent refers to an 1864 patent on a tool for opening boxes, but says that the new tool is an “improvement” and that it was designed principally for the needs of cigar dealers. It can therefore be assumed that the original design was utilitarian in concept and that the advertising that soon appeared on the cigar box opener was a later and logical development. Yet, as the years went by, the advertising did, in fact, become more important than the function of the tool. Gradually, the size of the cigar box opener (referred to as c.b.o. hereafter) diminished, until some of the last ones made were key ring size and were nothing more than thin pieces of metal with a tapered end notch and advertising.

There are many people, even old timers who have never seen or heard of a cigar box opener. This fact adds to the mystery of the c.b.o. as does its seeming uselessness (except when combined with a bottle opener or other tool.)

So just what is a cigar box opener? To qualify as a c.b.o., the object in question has to have some sort of an edge or tapered end that is used to pry open a cigar box. This tapered end was also used to cut and destroy the revenue tax stamp which sealed the box and was required by law to be destroyed. The second qualifier of a c.b.o. is a notch or nail puller. Every c.b.o. has these two elements (I’m sure someone will prove me wrong on this, but I can’t think of any exceptions). A third qualifier, but one that is not always present, is the tapper or hammer. This, of course, was used to hammer the cigar box shut. The majority of all c.b.o.s have these three elements even when combined with other things such as bottle openers, cigar cutters, wire pullers, letter openers, knives, hatchets, match strikers, tobacco plug lifters and other tools.

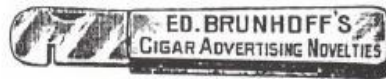
Adding to the mystique of the c.b.o. is the manner in which they were distributed. Unlike bottle openers, which were given out freely and abundantly, c.b.o.s were primarily distributed by cigar dealers and cigar drummers. They are said to have been given to customers with the purchase of a full case of cigars or as premiums and promotions to drug stores, saloons, hotels and other businesses when they placed a large order of certain cigar brands. It is also thought that the cigar retailer gave c.b.o.s as gifts to his frequent favorite customers. This could explain the relative rarity of c.b.o.s and why so many people have no idea what they are or how they are used.

Much the same as the pull tab and twist off cap spelled the demise of the trusted beer opener, so did the advent of cardboard cigar box sound the death knell of the cigar box opener. It could be argued that the functional purpose of the c.b.o. was always somewhat dubious since any screwdriver or pocketknife could do much the same job as the c.b.o. But with the introduction of the cardboard cigar box, even a pocketknife was hardly needed. Thus, until recently, the c.b.o. fell into oblivion. But with the recent growth in the market for imported cigars and the return to quality wooden cigar boxes, the c.b.o. has risen from its ashes. Unfortunately, these new cigar box openers are usually made in Germany and have no advertising, but as they say: “Everything old, is new again” and the return of the c.b.o. is like the return of an old and trusted friend.

Reproduction of a page from a 1909 catalog put out by Brunhoff Manufacturing Company, Cincinnati, Ohio.

BRUNHOFF'S BOX OPENERS

The advertisement on these box openers is either etched or stamped in by steel dies. This makes it ineffacable and always clear. Special designs, too numerous to illustrate here, have been made to order. We show only the most sensible and popular ones.



A—Steel Knife Box Opener

Size, closed, 8 3/4 inches; open 4 1/4 inches.
Advertisement stamped in by steel die.
For pocket use; folds like a jack-knife. A useful substitute for a business card—one that will not be thrown away. Finely tempered cutting edge.



B—Steel Box Opener for store use

This is a real tool and cannot break. Finely tempered cutting edge. The advertisement is stamped in by steel dies. There is no better and serviceable box opener. Can be used as a chisel and for opening cases.



C—Hammer and Box Opener

Size, 4 1/2 inches long.
Advertising space limited to 25 letters each side.
The little blade on the left ends with a shoulder to prevent slipping in too far. The advertisement is etched with perfect clear lettering.



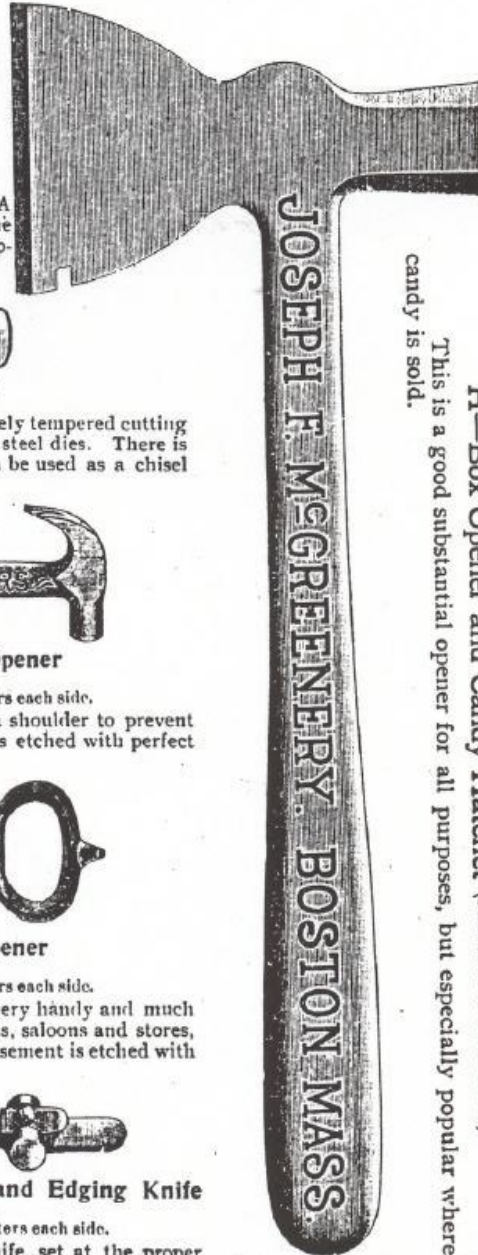
D—Box and Bottle Opener

Size, 4 1/2 inches long.
Advertising space limited to 25 letters each side.
This popular combination opener is very handy and much in demand. Not only useful in restaurants, saloons and stores, but also useful in private houses. Advertisement is etched with perfect clear lettering.



E—The Diaz Patent Box Opener and Edging Knife

Size, 5 inches long.
Advertising space limited to 24 letters each side.
This opener is provided with a knife set at the proper distance from the opener blade to guide the knife in cutting the labels, edging and stamps in a neat clean manner. Lettering the same as on openers C and D.



H—Box Opener and Candy Hatchet (full size illustration)
This is a good substantial opener for all purposes, but especially popular where candy is sold.

Brunhoff Mfg., Co., 1909

"Erie" Box Openers (the advertisement is *Etched* into the metal as shown)

L—Erie No. 61



M—Erie No. 62



N—Erie No. 63



O—Erie No. 68



P—Erie No. 68½



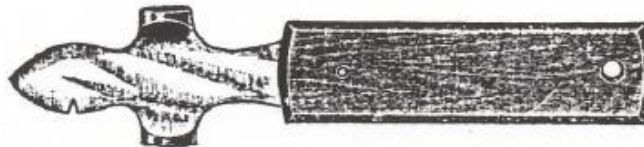
Specially for removing Crown and Seal bottle stoppers.

Q—Erie No. 69



Double Hammer. Very strong.

R—Erie No. 261



Steel Opener Securely Fastened in Wood Handle.

Advertisement etched on blade or printed on handle.

Cuts half size. Finely finished in nickel. The cheapest and most useful article you can use for keeping your brand of cigars or your name constantly before your trade.

Ask for special wholesale quotations, stating style by No. or letter and quantity desired.

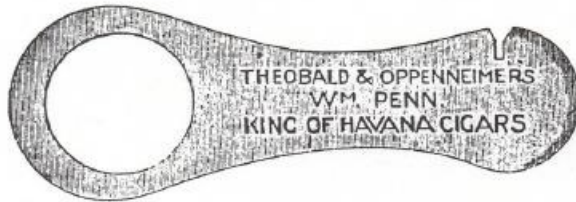
Brunhoff Mfg., Co., 1909

Ask for special wholesale quotations stating style by number or letter and quantity desired.



W. Folding Box Opener, (full size)

This opener is on the order of opener A, but larger and the blade is made of knife steel, tempered and securely riveted.



I. Steel Box Opener

Flat, hard tempered cutting edge, used on the key-ring, and serviceable also for opening knives, watches, etc., adv. stamped with steel die or etched.

K. Steel Box and Bottle Opener

A good serviceable tool. A first-class box and bottle opener *that will do the work.*



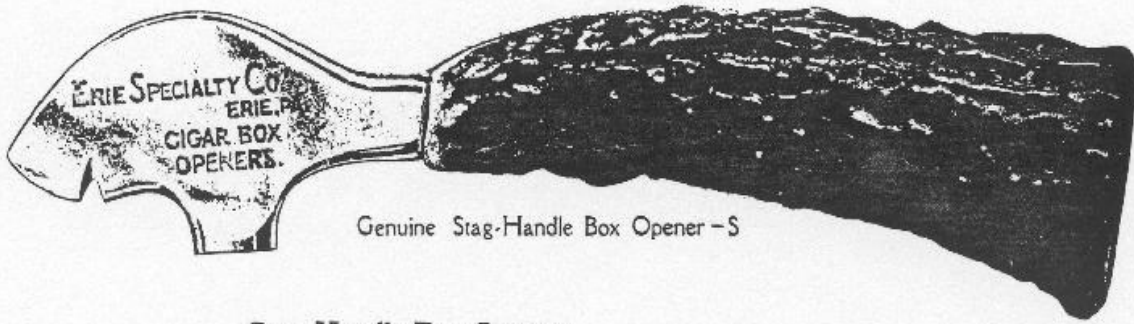
XL. Handiest General Cigar Store Tool

Pulls plug tobacco out of the caddy with ease. First class box opener. Hand forged, tempered blade. Best all around tool made.



Y. Steel Box Opener

This large steel box opener is too well known to need much description. Fine tempered steel. Extra long and heavy; provided with notches on lower edge for filing and for destroying revenue stamps.

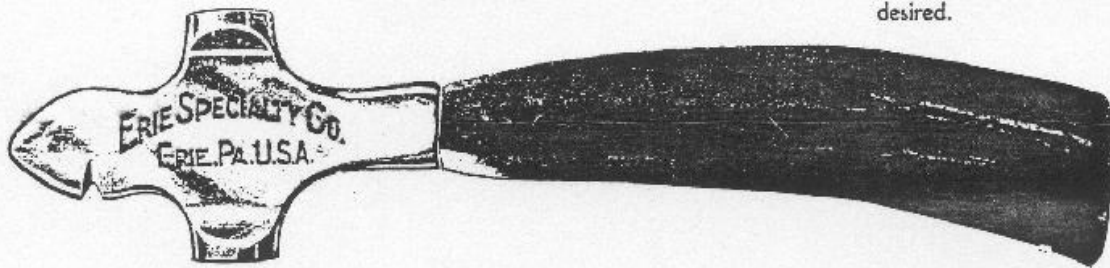


Genuine Stag-Handle Box Opener - S

Stag-Handle Box Openers

Without advertisement are kept in stock ready for mailing.

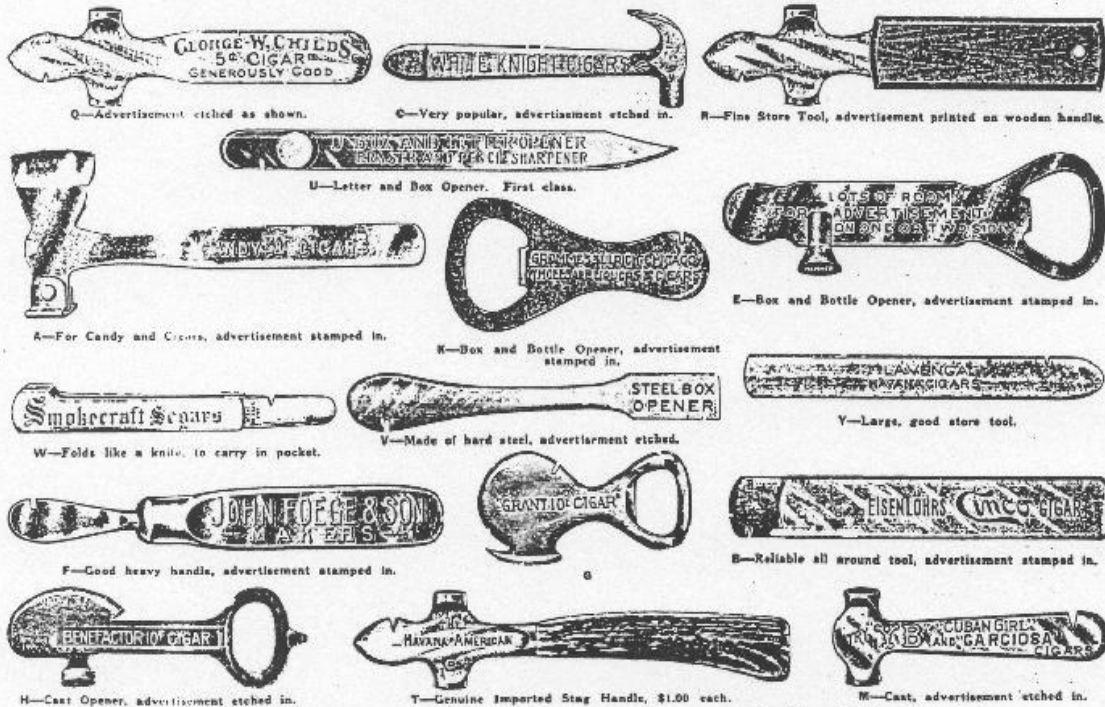
Ask for wholesale quotations stating exactly style and quantity desired.



Genuine Stag-Handle Box Opener—T. These box openers make a fine holiday gift. On account of their intrinsic value they are a highly valued souvenir. Securely mounted and each guaranteed. Sample sent postage prepaid on receipt of \$1.00

This is from an undated sales brochure

Cigar Box Openers are always in demand. Have Salesmen use them as Calling Cards.



Box Openers Cost Little but Help Much in Getting the Good Will of the Man Behind the Counter.

GEORGE ZORN & Co., IMPORTERS & MANUFACTURERS, 524 MARKET STREET, PHILADELPHIA, PA.

CUTS FULL SIZE.

The illustrations below show the full sizes of our Nickel Plated Cigar Box Openers. They are convenient to carry in the upper vest pocket, being practically shaped and not too heavy for that purpose. They will neither mar the label nor break the cover of the box.

No. 1.

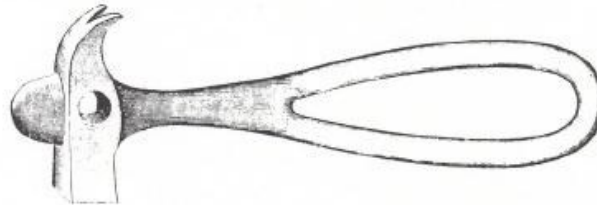


No. 1—Price, \$1.50 per dozen; \$15.00 per gross.

No. 2.



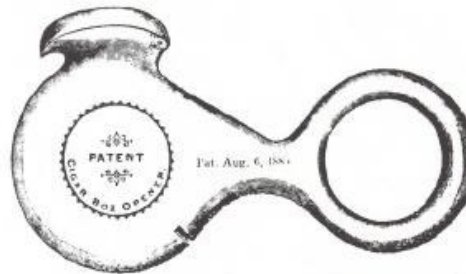
No. 2—Price, \$1.50 per dozen; \$15.00 per gross.



“NONPAREIL” CIGAR BOX OPENER.

Price, \$2.00 per dozen; \$22.50 per gross.

Woodworth's Patent Cigar Box Opener.



Best quality Steel, heavily Nickel Plated. Price, \$3.00 per dozen; \$33.00 per gross. In quantities of not less than one gross, name of advertiser can be handsomely etched inside of circle.

A Cigar Dealer's Companion.

OUR subjoined illustration tells its own story at a glance. It is indeed a cigar dealer's companion, and is one of the most useful and compact specimens. It consists of one fair-sized, finely finished steel blade, capable of being put to all the ordinary uses of a pocket knife, and a smaller blade, blunt at the edges, and very stoutly made, fitted with a small slot, and intended for use as a cigar box opener, the extra strength rendering it capable of resisting any ordinary strain required when opening a box. When not in use these close up into the handle, like a pocket knife, and the whole contrivance occupies about the same space. The handle is of white bone, and at the end is fitted with a solid steel head, with a slightly projecting side which serves the purpose of a hammer to refasten the box, the blunt blade, when open, serving as an elongation of the handle. This is an imported article.

Price, \$8.00 per Dozen.



A PERSONAL REMINISCENCE HOW AN EARLY CIGAR MAKER, SALESMAN AND DRUMMER PLIED HIS TRADE by Glen Enloe

Nicholas Hibbeler (1881-1938), grandfather of Ollie Hibbeler, Jr., typifies the cigar drummer of the early 1900's who used cigar box openers, cigar cutters, and other premiums as viable advertising promotion pieces.

Interestingly enough, Nick Hibbeler didn't start his career in the booming cigar industry as a drummer. After his formal education, Nick and his brother Louis apprenticed as cigar makers in downtown St. Louis, Missouri. Ollie's father, a retired dentist and son of Nick, can't recall the name of the cigar company where the two brothers apprenticed, but apparently learned their craft well.

In 1910 Nick and Louis opened their own business: the Hibbeler Cigar Company at 5th and Clay Streets in St. Charles, Missouri. At the peak of its operations the company employed as many as twenty people. The names of three of their cigar brands were: HIBB'S, HIBB'S SPECIAL and EL SANITA. The price range of their cigars was 2 for 5 cents, 5 cents and 10 cents each.

Back in those days Nick more than just oversaw the quality of his cigars. He also acted as salesman and drummer for the business. Originally he traveled out of St. Charles into the east mid-Missouri area by horse and buggy. Later he drove a two-door Ford.

While traveling, Nick bound his cigar boxes together by leather straps in large leather pouches. In those days, life on the road wasn't easy. He didn't return home until ALL of his cigars were sold. His primary customers were saloons, drug stores and mercantile stores. Ollie's father recalls that Nick's favorite stops were at the saloons.

In 1915, Nick sold his part of the cigar company to his brother and moved back to St. Louis. It was there that Nick opened up the Hibbeler Wholesale Leaf Tobacco Company at 209 Pine Street. That address is now under the St. Louis Gateway Arch.

After a short while, Nick's new business venture became very successful. However, in September of 1923 a fire broke out in the warehouse. The resulting smoke damage was such that federal alcohol and tobacco agents were forced to pour kerosene over his damaged tobacco leaf stock so it could not be sold. The result was that Nick lost everything including his home. Fire insurance was uncommon at the time.

After the fire, Nick went to work full time as a drummer-salesman for the William A. Stickney Cigar Company of St. Louis. His territory was east Missouri and western Illinois where he traveled approximately 8 to 10 years.

After his health began to fail, Nick and his wife moved to St. Peters, Missouri, about 24 miles west of St. Louis. There he made cigars by hand in his home and sold them on a weekly route in St. Louis, St. Charles, Lincoln and Warren County, Missouri.

It was during this period of time that Ollie remembers his grandfather best. He still recalls how Nick sat there at his bench carefully blending together the different tobacco leaves and how he would roll out a special little cigar just for him when grandma wasn't looking and how she raised holy hell when she found out about it! Later, when Ollie visited grandma, long after Nick had passed away, he could still smell the sweet aroma of tobacco lingering in the house. Like they always say, those were the days....