

Just
For

Openers



In the premier issue of "Just for Openers" I asked you to indicate your preferences for content in this newsletter. The results are as follows:

Order of Pref.:	1	2	3	4	5	6	7	8	No Opin.
Category									
Discoveries	29	12	9	3	4	0	1	0	0
Additions to Cat.	9	27	5	10	3	5	0	0	0
Historical Data & Photos	9	9	15	11	4	8	3	0	0
Collector Directory	3	5	5	10	8	12	14	0	2
Photos of Collections	4	0	7	10	11	11	13	2	1
Want Ads	2	1	14	5	22	10	3	1	1
Value Surveys	3	2	4	12	5	11	13	1	8

Based on these results my prime consideration in each issue will be to present new Discoveries. If you have a type opener not shown in BEER ADVERTISING OPENERS or issues 1 and 2 of the newsletter, please let me know.

There were many negative comments regarding a value survey and I am pleased to see so many who are dead set against it. Very few attempted to fill out the value survey form and as the sampling is so small, printing the average results will be of no consequence.

Many of you commented that you would like to see more historical data on openers yet no one submitting anything for print. Can anyone submit specific details concerning particular openers or openers in general? I recently found a type P-7 which reads "Robert Smith Ale Brewing Co., Philadelphia, Ales and Stouts, Established 1774, Famous for 142 years." Without a doubt this opener was produced in 1916.

There were 66 responses to the questionnaire. The average size collection is 375 different openers...and growing! Only 24 of the 66 respondents thought the publication should be limited to beer advertising openers and half of those 24 were willing to concede to the majority. You will note the presence of some non-beer openers in this issue's Discoveries. Future issues will classify more non-beers.

Regarding the formation of an opener collectors club - 38 are in favor, 14 are opposed, and 14 are undecided. On the weekend of August 18, 1979 I will plan to hold a meeting of opener collectors in the vicinity of Bridgeport, CT at a place to be determined. There will be a trade session and a meeting to discuss directions to be taken by "Just for Openers." If you plan to attend, please let me know by June 1 so location and details can be worked out. Those who indicate plans to attend will receive further details. As of March 31 there were 167 subscribers to this publication. 139 are listed in the directory and 28 chose to remain anonymous.

Issue 3 material deadline June 1, 1979. Donald Bull, 63 October Lane, Trumbull, CT 06611

BUY - SELL - TRADE MART (10¢ per word - issue 3 deadline is June 1, 1979)

WANTED: Openers & coasters from Illinois Breweries - no can piercers. Will buy or trade. Bob Brockmann, 5906 Ridge, Berkeley, IL 60163

WANTED: Corkscrews. All types. Send picture and price wanted. Some trades considered. Joseph Balaban, 6630 Riley Ave., Indianapolis, IN 46220

FOR SALE: Openers for as low as 25¢. 25¢ for list of 50. Jantos, 7025 Kevin, Bethel Park, PA 15102

GOOD NEWS ON REFERENCE MATERIALS

Bob Kay is working on a book on mini bottles which will include mini bottle openers and some type M-1 and M-2 openers.

For collectors with an interest in corkscrews a most interesting compilation of patents is to be found in GUIDE TO AMERICAN CORKSCREW PATENTS, VOLUME ONE, 1860-1895. The book is available from Bottlescrew Press, 5 The Strand, New Castle, DE 19720 for \$9.95 plus .95 post.

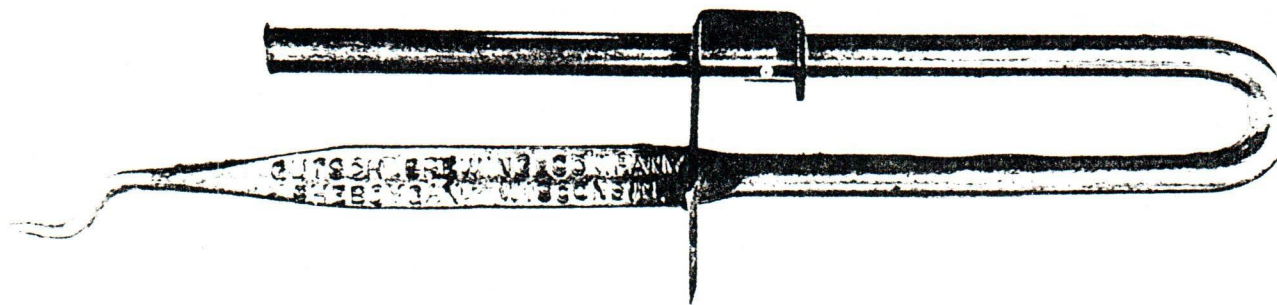
Ed Scott of 147 Cliff St., Haledon, NJ 07508 has recently published WHO'S WHO IN BREW. This is a listing of beer brands since prohibition giving the names of the brewers for each brand and years of production.

DO YOU KNOW?

Del Haarberg has a type B-14 opener with "San Jose Next!" Can anyone identify the source and significance of this opener?

E. Royal Gage has a type A-9 with "Hit it up to Buegers, 35 East 7th St., St. Paul." Source?

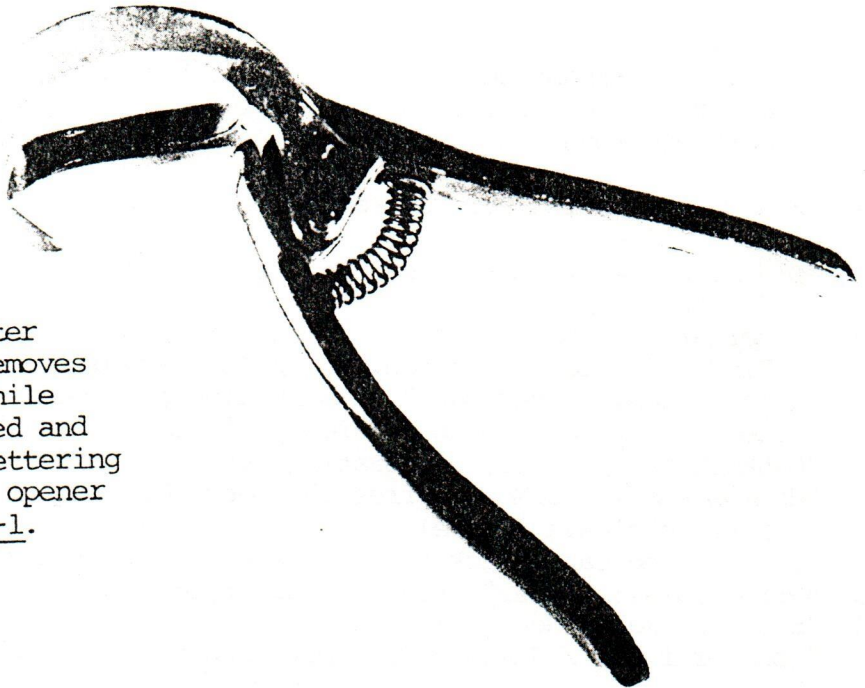
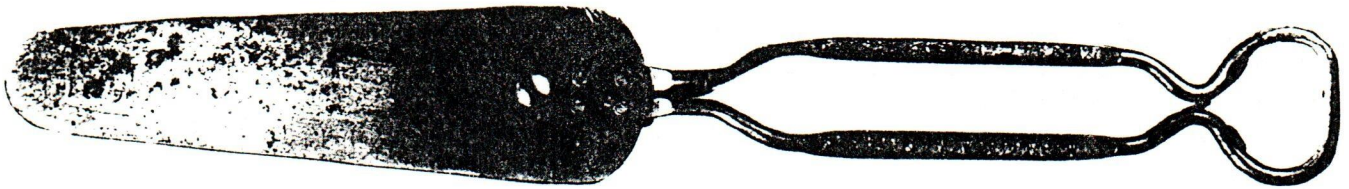
Can you explain how this opener works? It is from Gutsch Brewing Company, Sheboygan, Wisconsin:



If you can supply any historical information on specific openers or openers in general, copies of ads or catalog pages showing openers, black and white photos of your collection, discoveries, or anything you think will be of interest to your fellow collector, please submit for next issue.

DISCOVERY

Type F-13 Combination Cap Lifter / Cake Server. "Gutsch Brewing Company, Sheboygan, Wisconsin (Bull). Cake and Beer?!" (Smaller than actual size)



From the collection of Leonard Carpenter comes this fine opener. The opener removes the cap in an over the top manner. While removing the cap the handle is squeezed and the cap is held in the jaws. White lettering "Cremo Beer Ale" on red enamel. This opener belongs in a class by itself. Type Z-1.

From the July, 1928 catalog of Chas. Wieland, Inc., wholesale hardware, cutlery, auto & radio supplier. 149 Chambers St., New York City.

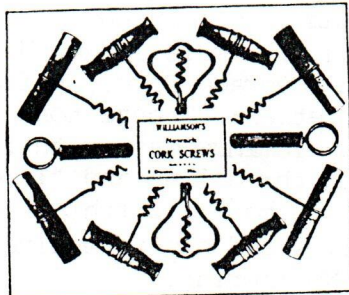


STEEL BOTTLE OPENER AND CORK SCREW.

Highly nickel plated. Screws into wooden tube for protection. Can also be used as a bottle opener. Length overall 3 1/2 in.

No. 4. Price.....70c. per doz. or \$8.10 per gro.

Put up 1 doz. on display card.



ASSORTED CORK SCREWS. PUT UP 1 DOZ. ON ATTRACTIVE DISPLAY CARD.

Assorted wire and wood handles as per illustration. No. 567. Price 38c. per doz. or \$4.25 per gro.

DISCOVERIES

- 31 Seal. "Get the National Habit. Cash in on National oil seals." (Durein)
- .. 32 Shoe. "Ask for Wooden Shoe Beer." (Wilkey)
- A-33 Fish spinner. "Ackerman's Beer." (Hyland)
- A-34 "Drink -A-R-R-O-W- It hits the spot. K & S Co." (Schele)
- A-35 Boot. "Afri Kola Co., Atlanta" (Murphy)
- A-36 Hand spinner - corkscrew. "Triner's Wines, Cordials, Liquors." (Murphy)

- B-32 "Drink -A-R-R-O-W- It hits the spot." (Hyland)
- B-33 "Schoenhofen's Edelweiss Beer" (Hole much larger than type B-4). (Bull)
- B-34 "The Peoples Brewing Co., Oshkosh, Wis. / Asterweiss Beer" (Bull)

- E-16 "Milwaukee Br'y of S.F., Golden State Beer" (Grove)

- G-3a "Ye Tavern Brew" (Like Type G-3 but has a rivet for reinforcement) (Schele)

- H-9 "Schlitz & Barmann Beer / J. J. Cuneo, Kingston, N.Y." (Carter)
- H-10 "Ask for Riedle's Beer, Phones 57241-2, Winnipeg, Manitoba" Canadian. Combination corkscrew-over the top opener (Bull)

- I-24 "Fox DeLuxe Beer" Por Ezy Patd. (Bull)

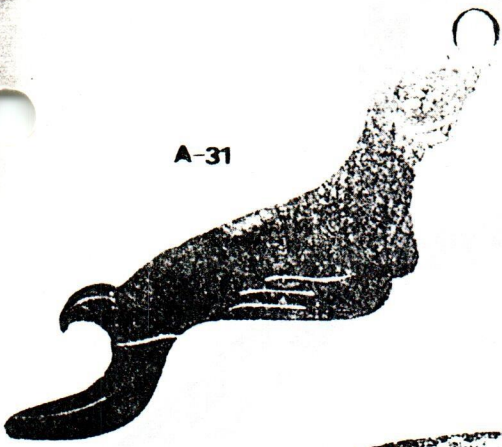
- M-38 "Old Milwaukee / America's Light Beer, 1962 Schlitz Brewing Co., Milwaukee, Wis." (Murphy)
- M-39 "International Breweries, Inc., Detroit, Mich., Buffalo, N.Y., Tampa, Fla., Findlay, Ohio, Covington, Ky. / IBI, Iroquois, Frankenmuth, Old Dutch, Bavarians, Silver Bar." Combination can piercer, cap lifter, corkscrew. (Bull) (Also - Fouch - "Pfeiffer's Famous Beer")
- M-40 "Oshkosh Brewing Co., Celebrating out 90th Birthday 1896-1956." (Bull)
- M-41 "Hamm's America's Most Refreshing Beer, Dist. by Bill and Walt" Cap lifter fits in sleeve (Grove)
- M-42 "Carling Red Cap, Black Label." Plastic Barrel sleeve over metal. (Bull)
- M-43 "Primo Hawaiian Beer" Luggage tag style - made in Denmark. (Lohmiller)
- M-44 "Storz / Omaha, Neb." (Enloe)
- M-45 "John Graf Co. / Jamaica Pale Dry Ginger Ale" (Bull)

- N-17 "The Hoster Columbus Co., Columbus, Ohio / Gold Top That's the Beer" (Murphy)
- N-18 "Chief Oshkosh Beer" (Bull)

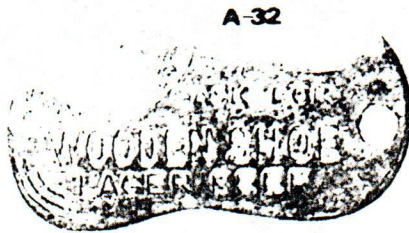
- P-20 "Blatz Milwaukee / Bottle Boy" Made in U.S.A. by A & J. (Bull)
- P-21 "Ruppert Beer-Ale." Made by Universal Cutlery Co., Switzerland. (Bull)
- P-22 "Blatz Milwaukee Fine Table Beers." Bull
- P-23 "The Gutsch Brewing Co. / Life Staff, The Long Storage Beer." (Bull)

The Iroquois Indians on page 7 Fit into new type category "Q" and they are going from left to right "ten little indians":

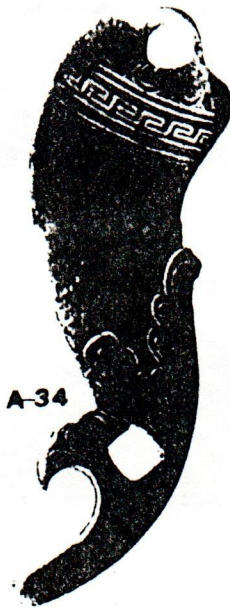
- Q-1 Red plastic-flat on back. Two varieties: "Iroquois Beverage Corporation, Buffalo, N.Y. 14-54, Iroquois Indian Head Beer and Ale" and "International Breweries Inc., Buffalo, N.Y. 14-54, Iroquois Indian Head Beer and Ale." (2)
- Q-2 Tin and steel. Flat Back. "Iroquois Beverage Corp., Buffalo, N.Y., Iroquois Indian Head Beer And Ale" Two varieties: Bronze tone and Chocolate color. (2)
- Q-3 Two different metals - Magnesium and Aluminum each with two imprint variations: "Iroquois Bev. Corp., Buffalo, N.Y." on three line and "Iroquois Beverage Corp., Buffalo, N.Y." on 5 lines. Imprint on back. Fifth variety in this type is painted brown, black, red, and yellow and has five line imprint. (5)
- Q-4 Combination match holder / opener. No imprint. (1)



A-31



A-32



A-34



A-33



A-35



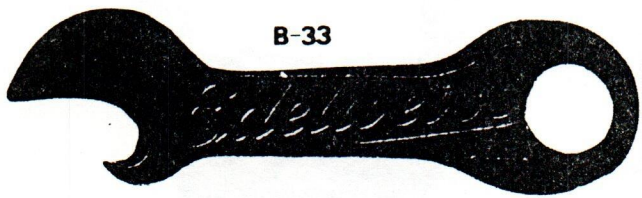
A-36



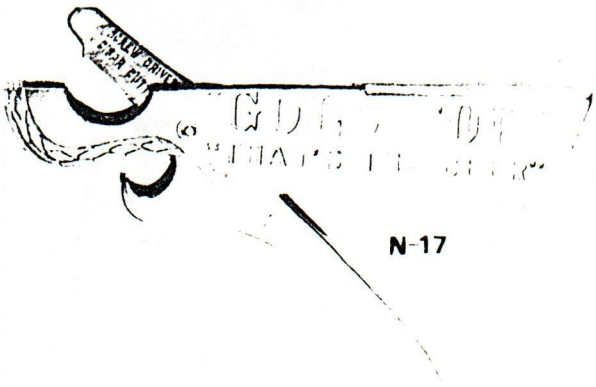
B-32



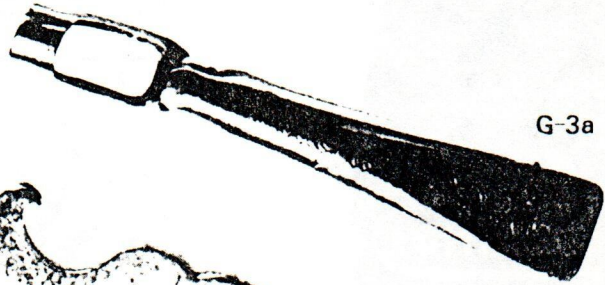
B-34



B-33



N-17



G-3a

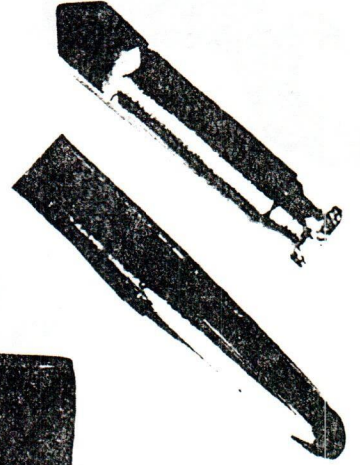
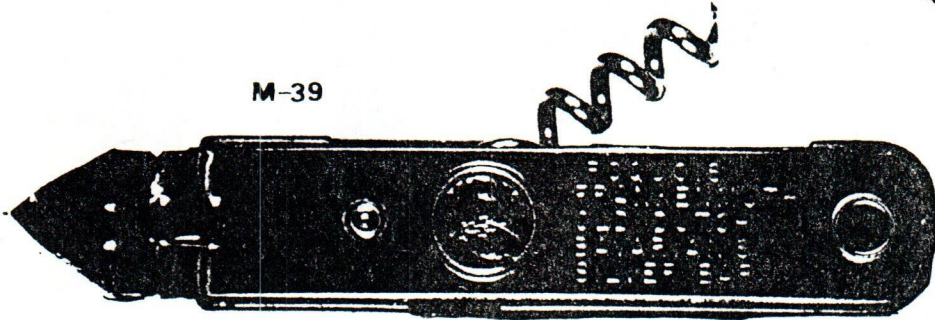


H-9

M-38



M-39



M-40

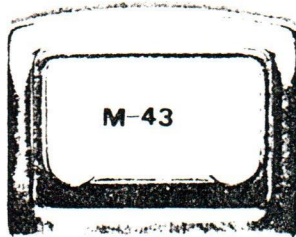


M-41

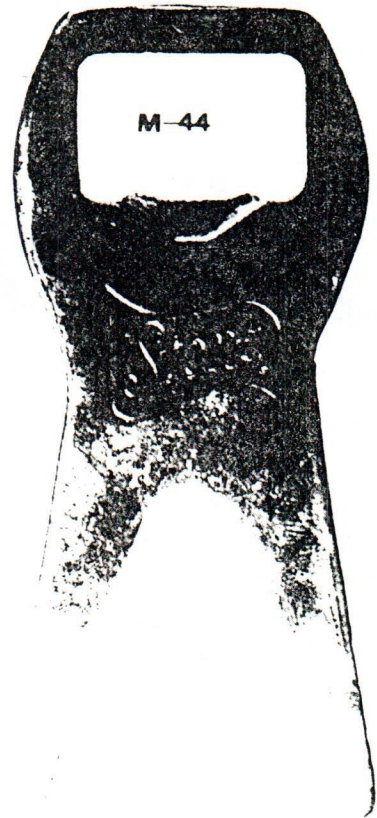
M-42

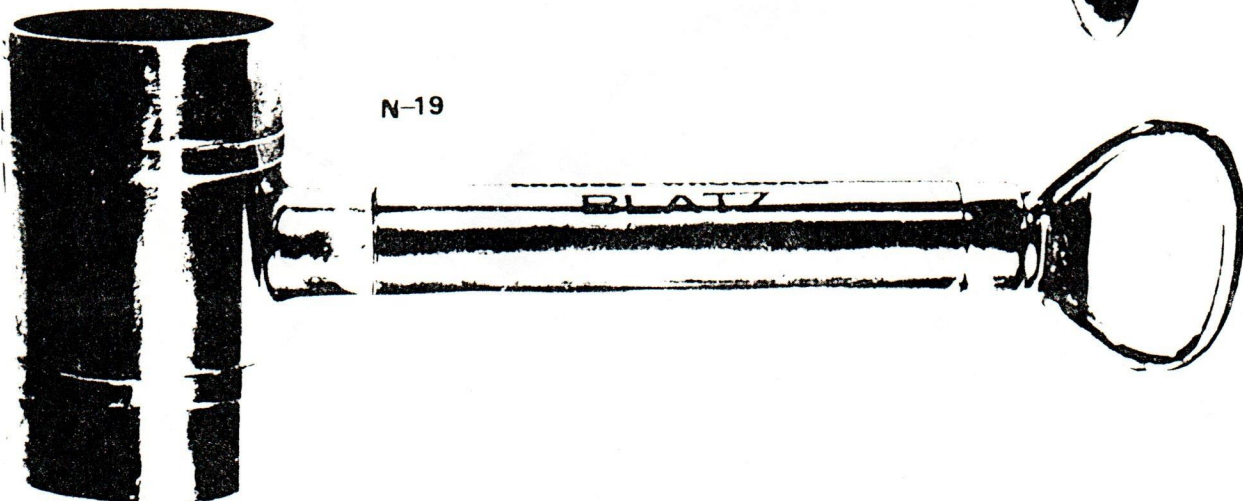
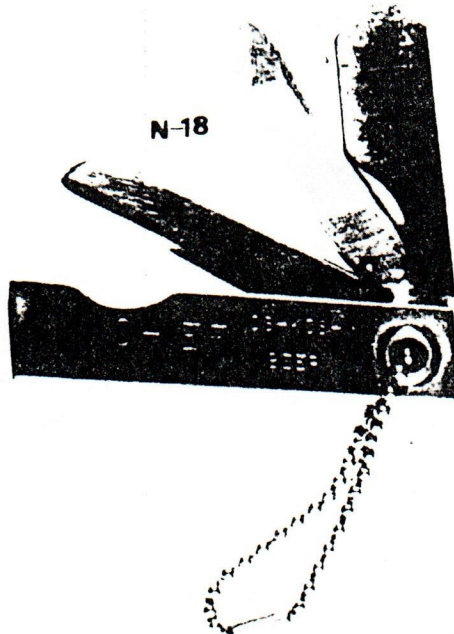
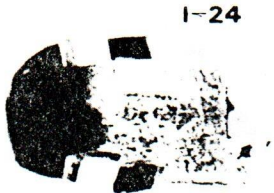


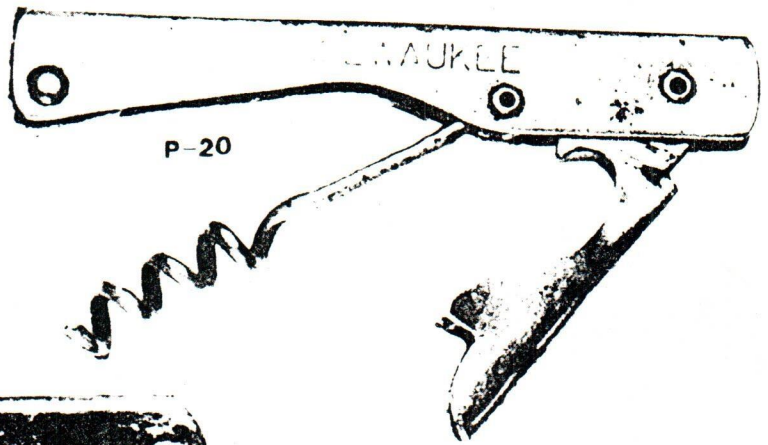
M-43



M-44







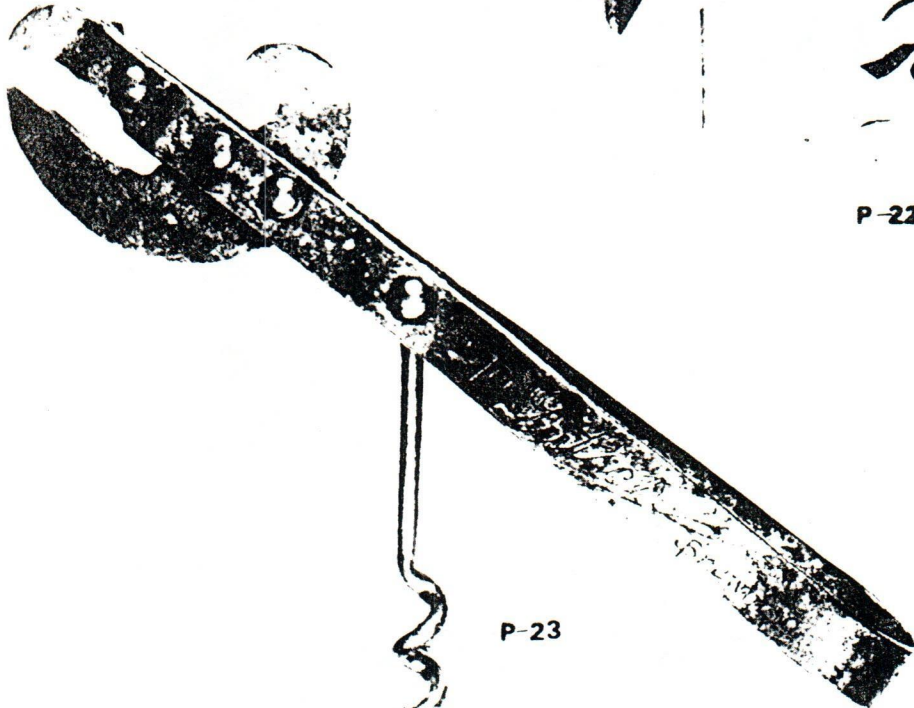
P-20



P-21

Waukees
Waukees

P-22



P-23

