

Just
For

Openers



63 October Lane, Trumbull, CT 06611

In the April issue several questions were posed. There were no comments on the B-21 "Drink Coney Island." Regarding Type C-13 K-B Beer: Fern Reeves acquired one from a Montanan who identified it as beer brewed by the Kessler Brewing Co, of Helena, Montana; Barry Weston writes that is probably from the Tooths brewery; the most likely answer comes from Carla Griffin who advises it is from the Prima Bismarck Brewing Co. of Chicago, Ill, for their Koenig Brau Premium Beer - she submitted a photocopy of a coaster using the same logo and lettering as on the C-13 opener.

According to Ed Scott's book WHO'S WHO IN BREW the Hoffman Beverage Co. (Type C-24-1) brewed beer and ale in Newark, N. J. from 1934-46. The Walter Brewery on type E-10-43 and E-14-455 & 454 was located in Eau Claire, Wisconsin (Paul Ziegelmaier). The Oertel's B-30 comes from the brewery which was located at 1400 Story Ave., Louisville, Kentucky (Reid).

Walkerville is in Ontario, Canada (Windsor) and was once home of the Walkerville Brewing Co, which became Carling in 1944 and O'Keefe's in 1947. The opener in question is for this brewery's Canadian brew. Frank Hickok of Ogdensburg, New York explains the marking "Newell, Canada" as follows: "Newell Manufacturing Co., manufacturer of small metal items, has a plant here in Ogdensburg and a branch directly across the St. Lawrence River in Prescott, Ontario. Several types of openers were manufactured in the Prescott plant and sent to Ogdensburg for chrome plating," Frank has two type I-7 marked Newell and 8 Canadian openers in the Newell style shown on page 117 of BEER ADVERTISING OPENERS (3rd from top).

On April 15, 1924 Harry L. Vaughan of Chicago, Illinois was granted Patent No. 1,490,149 for the invention of the over the top style opener (Type H-1, 2, 3). The opener is formed by stamping out of a strip of metal a blank of proper conformation and then bending it into final form by means of suitable dies. The patent application was filed on Dec. 1, 1921 and was assigned to the Vaughan Novelty Mfg. Co.

Bob Chapman, Ollie Hibbeler, and Art Santen have had some preliminary discussions concerning the 1981 convention to be held in St. Louis. It is tentatively planned for the last weekend of April. Any suggestions should be forwarded to Bob Chapman, the convention sponsor. The enthusiastic response to the Special 1980 Convention Edition of JFO with regrets of having missed it points toward a blockbuster meeting -in 1981, Has anyone given a thought to sponsoring the 1982 convention? Plan ahead...

Joe Cardone has submitted the results of his second opener mail auction. The auction consisted of 100 openers of which 81 were sold for a total of \$304,63. The average price was \$3.76. Joe is working up a new auction and if you would like a copy, send a SASE to him at 1833 Rosemont Blvd., Dayton, OH 45420. Joe is planning additional auctions in the future and will accept consignments with a *fee* of 20% on the final sale price.

Ross Reid has a B-22 "Drink Clicco Brew." Can anyone identify this opener?

Bob Carter has submitted type D-11 to this issue's "Discoveries" section. The Hagerstown Brewing Co. was founded in 1899 and had an annual beer production capacity of 25,000 barrels. The brewery closed in 1918 at prohibition and was reopened for only a short time after prohibition until 1937, The D-11 opener was no doubt a limited production item in the pre- prohibition period. Bob indicates that it is one of the most expensive to manufacture beer advertising openers he has seen. First the opener was cast out of iron; then the highlight area (everything except the background for lettering) was polished smooth to a bright finish, and finally the two points at the cap lifter cup were ground to a sharp point and edge. The point was to puncture the metal cap and the lifter edge fit in the narrow crevice below the cap. This combination causes the opener to grip the cap as it is removed from the bottle. The periods after the M and D in the Maryland abbreviation are indicative of an early time period.

Have you seen any interesting beer coasters lately? Jim Hosier of Box 23705, Washington, DC 20024 comes up with some dandy openers to trade for coasters and now he has some real jewels to trade - first a word about Jim , He started collecting cardboard beer coasters in Germany during an Air Force tour. He picked up his first coaster to copy down a girl's telephone number and later discovered coasters were easier to pick up than girls...and less expensive! Jim estimates he has about 26,000 different coasters including 7000 U.S. which are the pride and joy of his collection. He acquires his coasters through flea markets, antique stores, and extensive trading. He only collects coasters and in his search for these frequently finds super openers and other breweriana. Finding coasters Jim can use is not the easiest for the prospective trader, but the rewards are sweet. Amongst the several hundred openers he has for trade as of this writing are these gems:

- | | |
|--|--|
| <u>A-25</u> Kings Beer, Blk, red. Good cond. | <u>A-26</u> Peter Doelger, N.Y., red. Mint |
| <u>B-1</u> Susquehanna Beer, blk, red. Good. | <u>C-1</u> #4 Valley Forge - near mint |
| <u>C-2</u> #2 Tech Beer, VG. Navy blue. | <u>M-3</u> #2 Bismarck , Red, Mint. |
| <u>M-3</u> #3 City Club, Green, Mint. | <u>M-3</u> #16 Sunshine, yellow, good. |
| M-3un. Ruppert's Beer, yellow, mint. | <u>M-3</u> Gunthers, Navy Blue, Mint. |

How's that for trade bait?

OPENERS WANTED: Types A, B, C, D, M and N. Must be mint or excellent (Rust removal, wire brushing or buffing will not be considered mint condition).

Quote price in 1st letter. Gene Appel, 38915 Deer Run Road, Palmdale, CA 93590

TRADE: Over 100 beer openers, 200 soda and Misc. Want Cigar Box openers and bottle openers advertising cigars or cast iron toy cap guns. Also over 50 cast iron figural openers to trade for cast iron toy cap guns. Bob Carter, 3809 Spring Meadow Drive, Ellicott City, MD 21043.

CORKSCREWS WANTED: I want all kinds - old or new - they don't even have to have beer advertising on them - dig out all of your corkscrews and tell me about them. Joe Balaban, 6630 Riley Ave., Indianapolis, IN 46220

ADDITIONS TO 1980 DIRECTORY OF OPENER COLLECTORS:

- ATKINSON, Jim & Sherri, 123 Corinne Ave., Santa Cruz, CA 95065 (408) 475 6484
- BRAEUNER, Raymond H., 1520 Horine Road, Festus, MO 63028
- HINTON, Fred, Box 254, Marsland, NE 69354
- LaFRANCE, Normand J., 113 High St., Holyoke, MA 01040
- MORGAN, Phil J., 1200 S., Woodlawn, Apt. 723, Derby, KS 67037 (316) 788 0463
- REIDLING, Hank, 8847 Liptonshire, Dallas, TX 75238
- SPERR, Donald, 1675 Upr, Afton Road, Saint Paul, MN 64053

Address Change: Glen ENLOE, 910 S. Glenwood, Independence, MO 64053

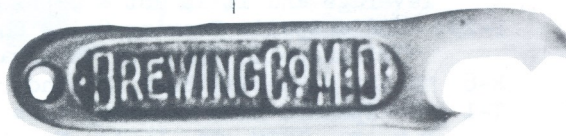
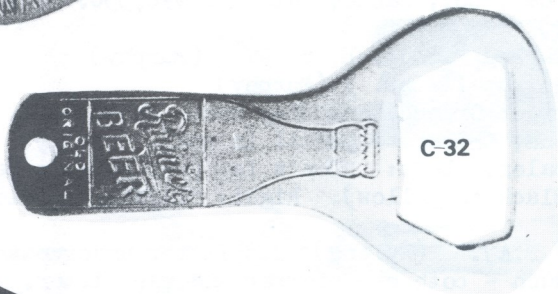
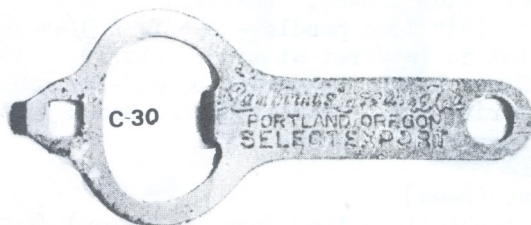
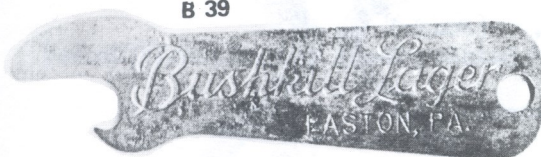
Telephone addition: Don BULL (203) 261 2398, Number in directory is office.

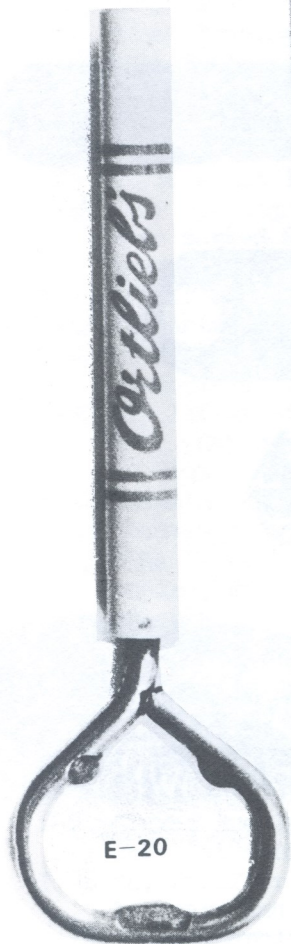
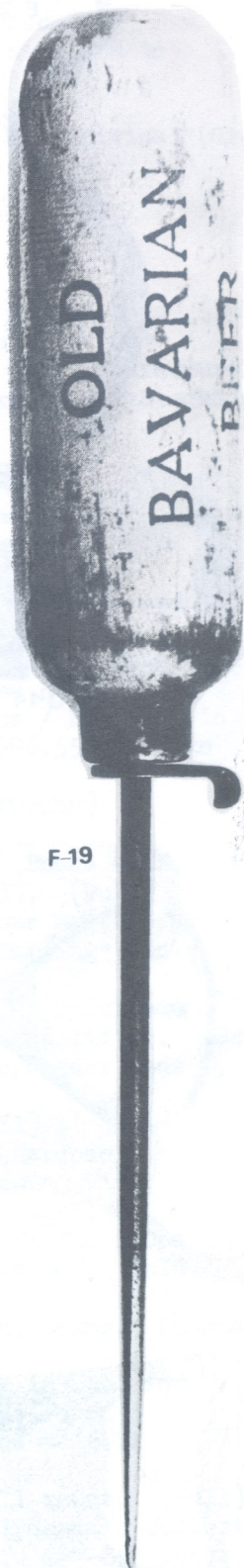
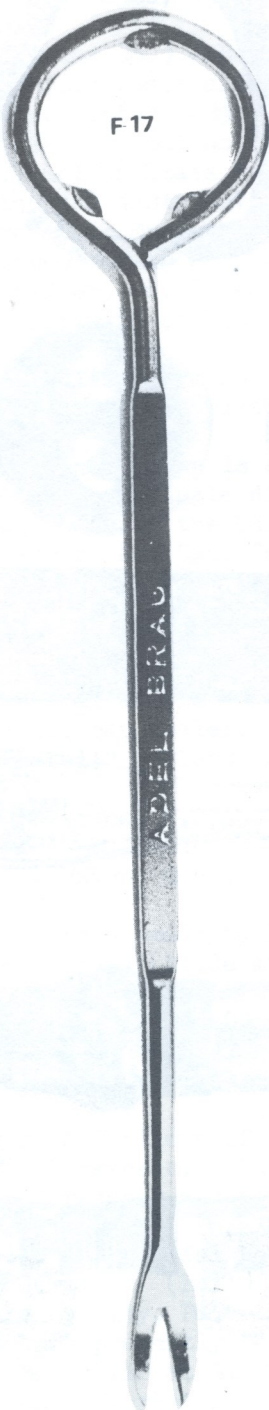
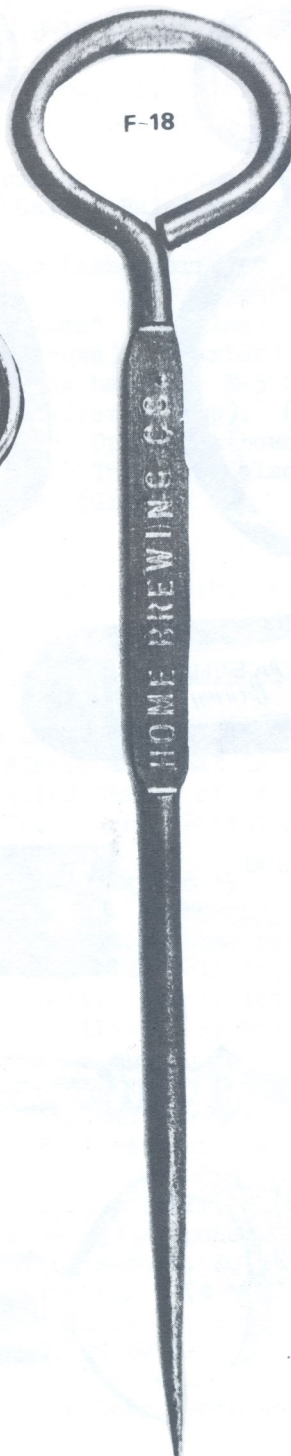
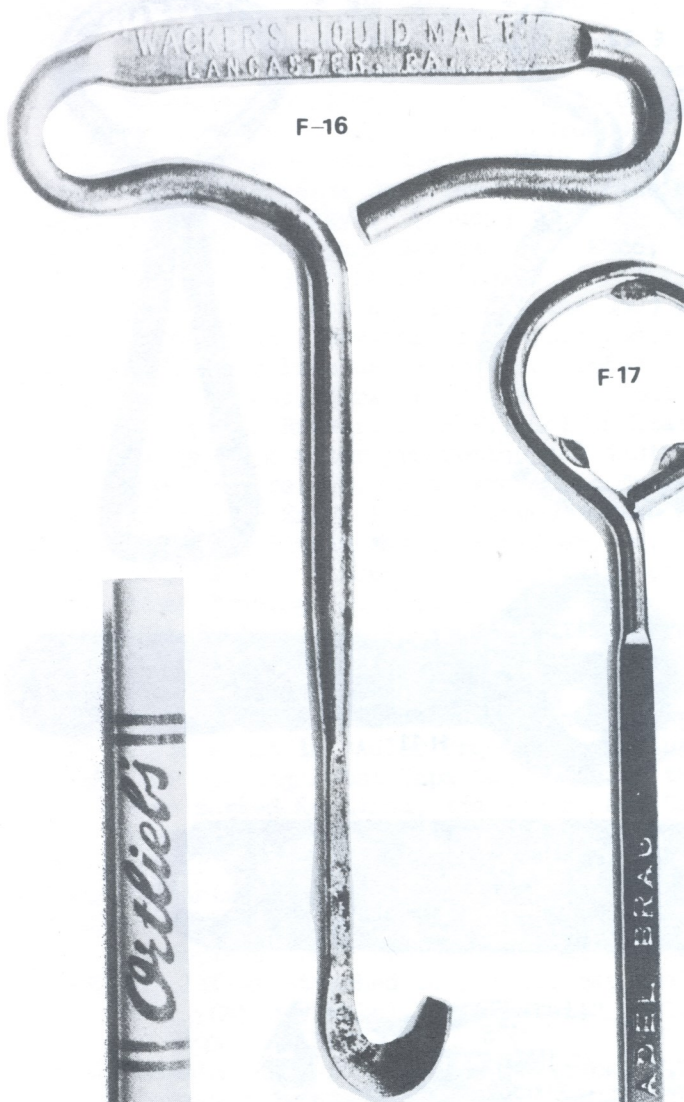
The Deadline for the October issue of JFO is September 1, 1980. Submit all news, discoveries, photos, ads (10c per word), and anything you feel might be of interest to your fellow collector by this date to Don Bull, 63 October Lane, Trumbull, CT 06611

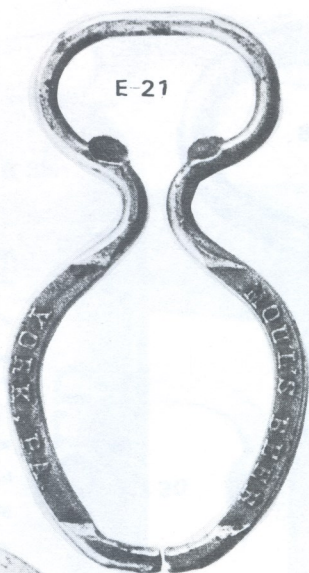
DISCOVERIES (new types of openers not shown in BEER ADVERTISING OPENERS and previous editions of Just For Openers)

- B-37 "DuBois Beers, Budweiser, Wurzbürger" (Bull)
- B-38 "Try Best Ever Malt & Hop Syrup" Similar to B-13 except has square hole (Grove)
- B-39 "Bushkill Lager, Easton, Pa." (Reed)
- B-40 "Remember Sebewaing Beer"/ Not for resale, Emro, St. L., Mo, (Fouch)
- C-30 "Gambrinus Brewing Co., Portland, Oregon, Select Export" Trade mark: M in diamond, pat. appl'd for. (Green)
- C-31 "Always drink Gold Bond". With cigar box opener. (Fouch)
- C-32 "Rainier Brewing Co., Inc., San Francisco, Cal. / Rainier Beer, Old Original" (Grove)
- C-33 "Leisy's / Leisy's" (Fouch)
- C-34 "Hoffman Sparkling Beverages" / Ekco, Chicago (Ashendorf)
- D-9 "Oshkosh / Rahr Beer" (Bull)
- D-10 "L.A.B. Co. (Los Angeles Brewing Co.) / Bohemian" (Walling)
- D-11 "Hagerstown/ Brewing Co., M.D." (Both sides shown). (Carter)
- E-20 "Ortlieb's Premium Lager Since 1869" (3½" long handle - E-5 is 2 ¾" long) (Bull)
- E-21 "Moul's Beer, York, Pa." (Like E-2 but no tab/fret at top). (Bull)
- E-22 "Milwaukee Brewery of S.F., Golden State Beer" Opener is bowed - by manufacturer's design, not after production and distribution. This type also known in "Stegmaier, Wilkes-Barre, Pa." and "Frontenac Export Ale" (Grove)
- E-23 "Wieland's Extra Pale" (Grove)
- F-16 "Wacker's Liquid Malt, Lancaster, Pa." (Reed)
- F-17 "Adel Brau / Schoen's" Opener with cocktail (olive) fork. (Dummer)
- F-18 "Home Brewing Co. / same" (Hyland)
- F-19 "Old Bavarian Beer" Wood handle. (Green)
- G-14 "Jos. Schlitz Brewing Co." Printed on plastic sleeve slipped over metal opener. (Ashendorf auction)
- H-11 "Fox Head Beers and Ale" (opener shown is same as H-7 - two dimples.
This same style exist in "Adler Brau" with a single dimple and that is type H-11)
- J-10 "For Opening Pabst Tapa Can, made in the United States of America / For beer in cans marked Keglined, trade mark Am. Can. Co., Canco, Patent 1,996,550." (like type I-7 but no cap lifter). (Carter)
- M-56 "Pfaff's Lager / 1857-1907" Handle marked Pat'd Feb, 6 '94" (Murphy)
- M-57 "Schuster" Wood handle with cast iron cap lifter. (Murphy)
- N-29 "Compliments of L. J Donze, Distributor of Griesedieck Stag Beer, Phone 420M, Ste. Genevieve, Mo." (G. Felsenthal & Sons, Chicago - pencil in end). (Bull)
- N-30 Cap lifter attached to plastic cap sealer. Left: "Don't let your spirits get low. Say Hey Mabel Black Label!" (Black on yellow). Right: "Garling" (Gold on blue), (Bull)
- N-31 "Hamm's Beer, since 1865" (Teraco, U.S.A). (Hyland) Gap lifter underneath, Plastic.
- N-32 "Budweiser" Fishing lure made by Heddon - both can piercer and cap lifter. (Schele)
- N-33 "The Weibel Brewing Co., New Haven, Conn. / Bottled Beer" Knife/opener made by Empire, Winsted, Ct. (Bull)
- N-34 "Champagne Velvet." Knife/opener made by Lalama, Italy. (Bull)
- N-35 "S-B Beer / Silver Bar Ale" Knife (blade missing) / opener. (Cardone)
- N-36 "To a good Sportsman, Hamm's Beer, so light, so smooth, so mellow." Fish knife/opener by Colonial - Pat, No. 2,310,541 U.S.A. (Ashendorf auction)
- N-37 "Stroh's Beer" Opener/knife presently being sold by The Stroh Gift Shop, One Stroh Drive, Detroit, Michigan 48226 for \$2.00. Type M-.54 is also being sold presently for \$1.75.
- L-6 "Texas Brewing. Co., Brewers & Bottlers of Fine Beer, Fort Worth, Texas." (Compare shape at neck to type L-2. Corkscrew. (Bull)
- P-28 "C. Pfeiffer Brewing Co." Corkscrew and wire breaker. The hook is used for leverage and it is not a cap lifter. This predates crown tops. (Fouch)
- P-29 "Indianapolis Brewing Co. / Champ Tafel Beer" "Tonica" on blade as well as "Indianapolis Brew, Co., Germany" (Bull)
- R-8 "Kaier's Special Beer, Mahanoy City, Pa," Painted cast iron wall mount. (Bull)
- T-1-4 Openers made with tap knob presently being offered by The Clydesdale Collection, P.O. Box 1977, St. Louis, Mo. 63118 at \$14.95 each+ \$1.50 post. 6½"-8 ¼" long.

Two type M-55 Burger Bottles with different labels are shown on the last page. According to John Hyland these bottles were manufactured by Fair Mount Glass Co., Indianapolis, Indiana in 1958.



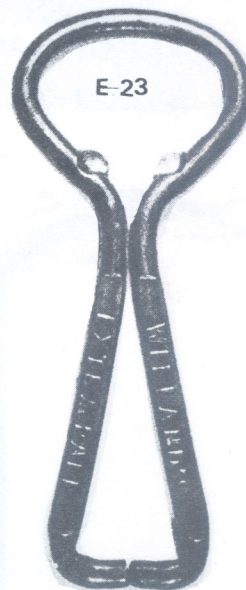




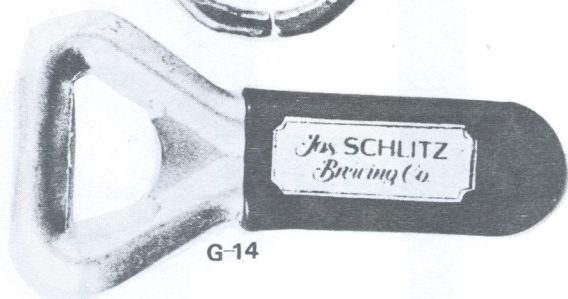
E-21



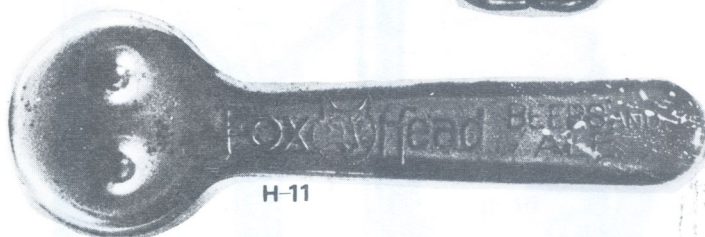
E-22



E-23



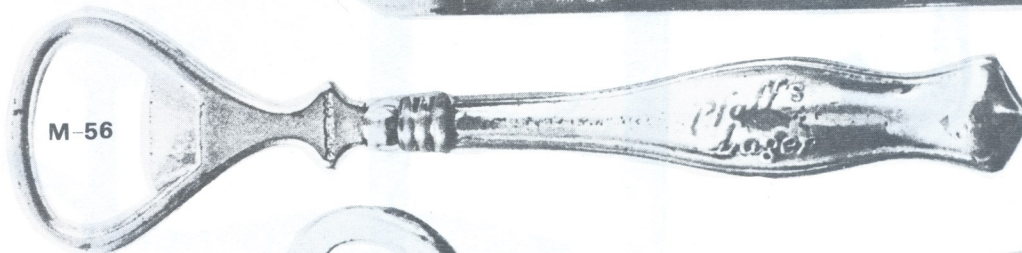
G-14



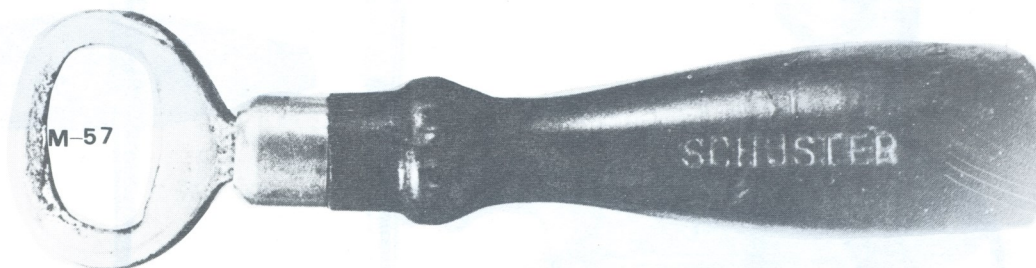
H-11



J-10



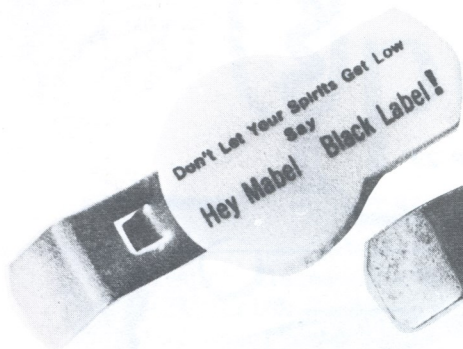
M-56



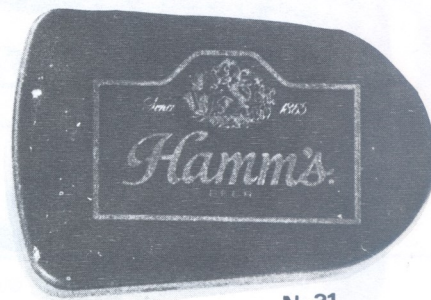
M-57



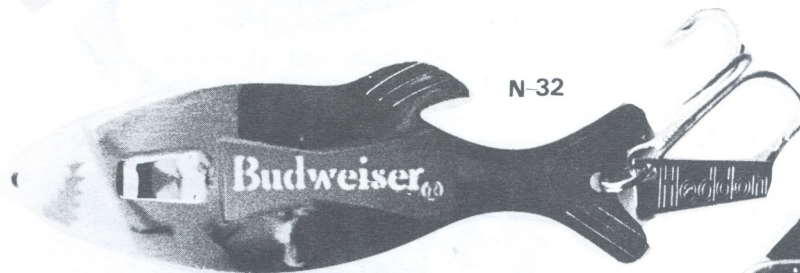
N-29



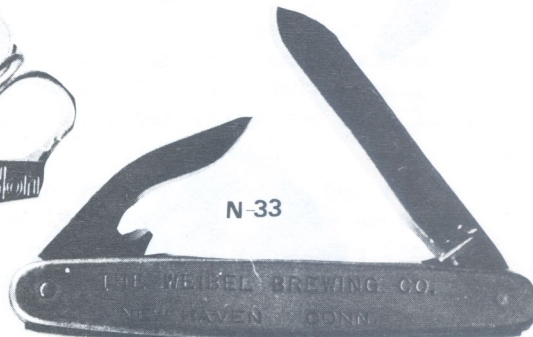
N-30



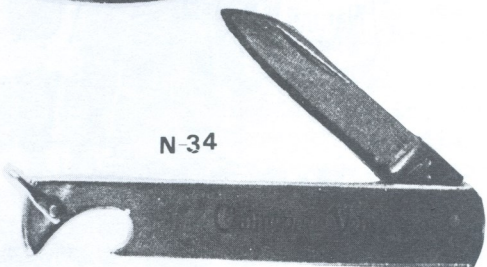
N-31



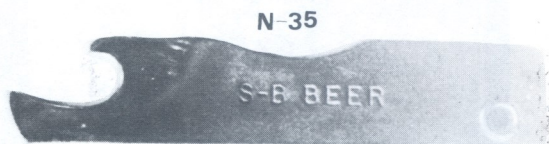
N-32



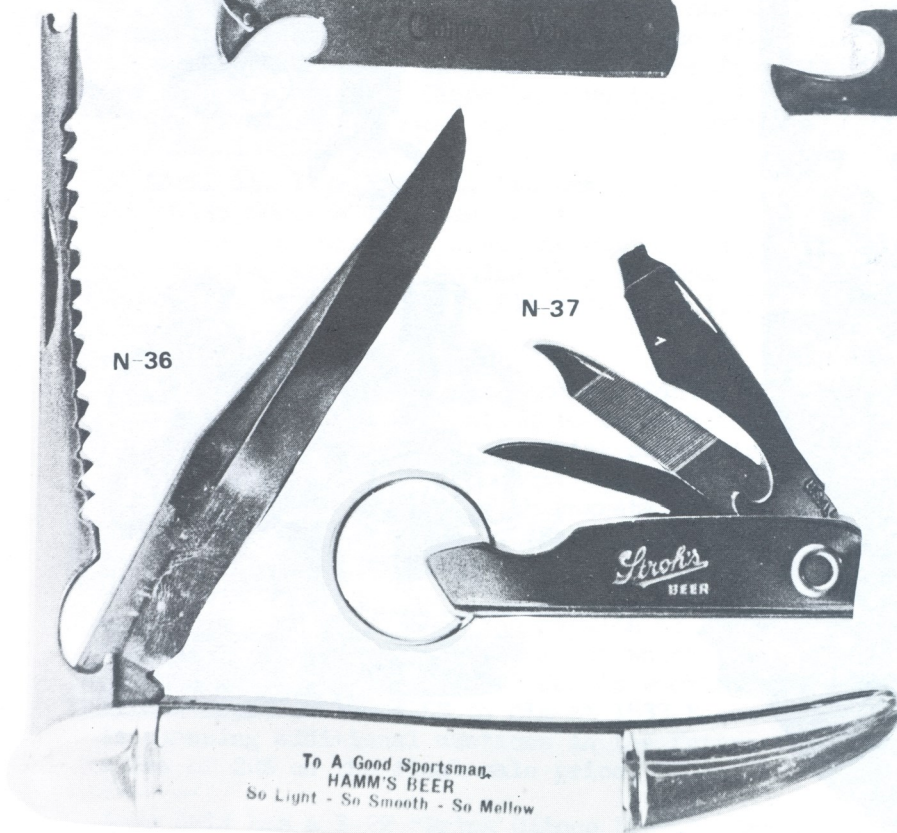
N-33



N-34



N-35

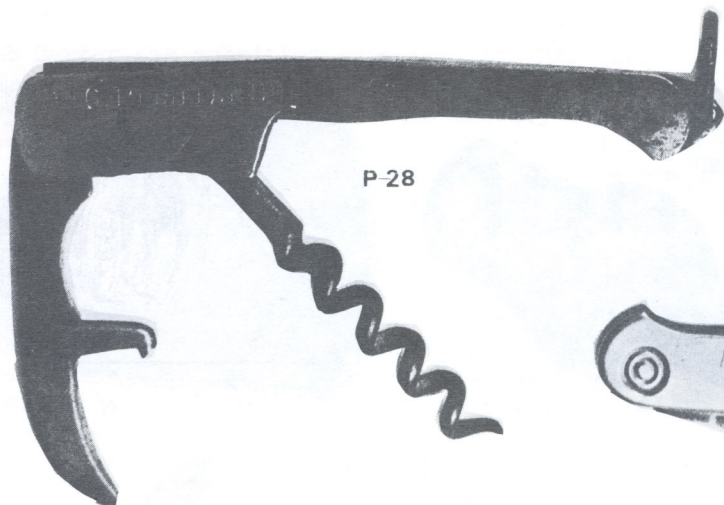


N-36

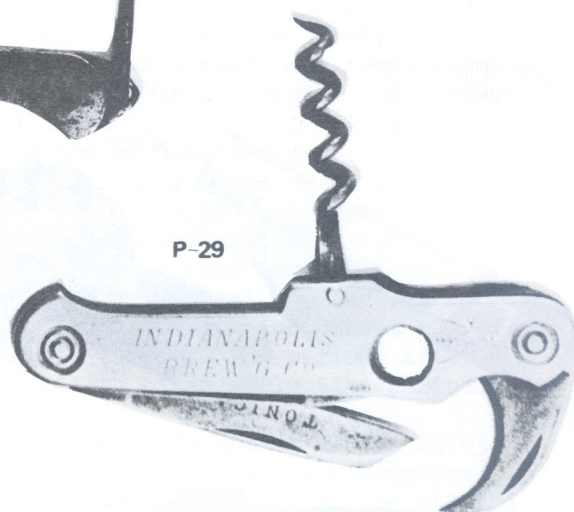
N-37



L-6



P-28



P-29



R-8



Supplement to the July, 1980 issue of Just For Openers.

OPENER MANUFACTURERS by Donald Bull and Gene Appel

In the hopes of coming up with some good historical information regarding beer advertising openers, we have compiled a list of opener manufacturers known to us, In addition we have assigned each manufacturer a two letter code in order to assist those who trade, buy, and sell openers based on manufacturer and variations of given types, Where we know a company was a producer of a typed opener, we have indicated that by the corresponding letter for the type, It is our sincere hope that the readers will take this list and seek out catalogs and data on these companies and submit their findings for inclusion in future newsletters, If you know of additional manufacturers or type assignments, please let us know.

<u>Code</u>	<u>Manufacturer</u>	<u>Types</u>
AN	Adv. Novelty Co., Chicago	B
AH	Alexander-Husky	M (M-34)
BB	B & B, St, Paul, Minn.	A F N O
BA	Bassett	N
BE	H.D. Beach Co., Coshocton, Ohio	M
BL	Belmont, San Antonio, Texas	I
BM	E.M. Blumenthal & Co., Chicago	B
BO	David A, Bortner Jr.	M (M-27)
CD	Cadet, San Antonio	I
CH	Hugo Cahn & Co., New York	B
CM	Camilius Cutlery Co., Camilius, N.Y. (Camco)	P (P-14)
CA	Canco - American Can Co.	I J
CP	Capitol Stampings Corp., Milwaukee, Wis.	G (G-4)
CH	Chicago Spec. Box Co.	B
CO	Colonial Knife Co., Providence, R.I.	M N P
CR	Crown T & O Co., Chicago (or C. T. & O Co.)	A
CW	Crown, U.S.A.	I
DA	Davis	P
DO	L.F. Dow Co.	B
ED	Edlund Co., Burlington, Vermont	G (G-9)
EK	Ekco, Chicago	E I K M
EP	Empire	N
EM	Emro, St. Louis	I J B
ER	Erickson, Des Moines	O
ET	Etched P Co., L.I.C., N.Y.	N
FE	G. Felsenthal & Sons, Chicago	N
GD	The Greenduck Co., Chicago	B
GG	G. G. Greene, Warren, Pa.	H I
HW	Handy Walden	C E F K I N O
HA	Harrah's	J
HE	Oscar Heyman & Co., 43 Park Place, N. Y. C.	B
HD	Heddon	N
IM	Imperial, Providence, R.I.	P
LA	Lalama, Italy	N
LI	Liter, U.S.A.	N
LU	Lunn, Montreal	G
MA	M.A. Co.	A (A-21)
MI	Mira	I
MU	Muth	H L
NU	Nu Pro Corp.	M
PE	D. Perez, Solingen, Germany	P (P-26)
QU	Quimby Mfg, Co., Minneapolis, Minn.	B
RA	H.R. Ransom, Detroit, Mich.	I (I-22)
RE	Revere Copper Co., Rome, N.Y.	K

OPENER MANUFACTURERS continued...

<u>Code</u>	<u>Manufacturer</u>	<u>Types</u>
RY	Ryede Specialty Works, 37 Main St., Rochester	G
SE	Sealtite, 115 Maiden Lane, New York City	G
SS	Sesco	G
SO	Soss Mfg. Co., Roselle, N.J.	I (I-10)
ST	Starr X, Newport News, Va.	O
SP	A.W. Stephens Mfg. Co., Waltham, Mass.	B
TE	Teraco, U.S.A.	N
UN	Universal Cutlery Co., Switzerland	P (P-21)
VA	Vaughan, Chicago	A B C E F G H I J K M N O
WO	W (?)	I (I-6)
WH	The W & H Co., Newark, N.J.	B
WD	Andy Wadoz & Co., Milwaukee, Wis.	K (K-5)
WA	Walden, Inc., 16 Concord Lane, Cambridge, Mass.	C G I J
WL	Walker	P
WC	Warco	N
WN	Western Newell, Freeport, Ill.	I
WI	Williamson Co., Newark, N.J.	L P
WT	Wittemann Bros., New York	B

,,,and let us not forget Mr . "Pat Pending" whose name (!) appears on so many openers as well as other products - what a producer!

We are aware that the above list is, no doubt, incomplete. We have not attempted to list each numerical subgroup for the types; however, we have indicated the specific types where it may be of significant importance to aid in finding further information on the company.

We suspect some of the companies listed here may not have been actual manufacturers of the openers; rather they may have acted as agents and sold the openers under private label.

Note that there is no manufacturer listed for any of the D type cast iron openers. We have not seen a manufacturer's name on any of these, have you?

If you have any additional information on any of these companies, please share it with your fellow collectors - even a city location, street address, additional type, copy of a catalog, years in business, etc.

Donald Bull
63 October Lane
Trumbull, CT 06611

Gene Appel
38915 Deer Run Road
Palmdale, CA 93550