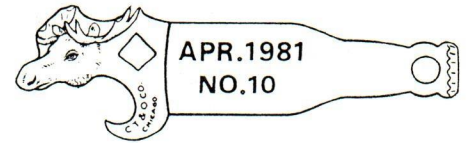


# Just for openers



P.O. BOX 106 TRUMBULL, CONNECTICUT 06611

## THIRD ANNUAL OPENER CONVENTION - Last Chance - Final Notice - Sign up now!

Bob Chapman, the convention sponsor writes: "If you were sick, working, broke, in jail, etc. during the 1st convention and, likewise, missed the 2nd convention, and you liked the reviews in 'Just for Openers' and felt sorry you had not attended, for heaven's sake don't miss this one. Take pills and get healthy, quit your job, borrow, have someone post bail for you - get to the convention. You just might take home those precious items you have been trying to trade for or buy all these years....call or write to me - I'll be glad to answer any questions for you. See you there!".....Bob Chapman.

In the last two issues of JFO you received convention registration forms. If you haven't already done so, fill out the form and mail it to Bob with your \$10.00 table fee. His address: Bob Chapman, 2225 Entity, St. Louis, MO 63114. Telephone: (314) 426 2421.

The convention will be held April 24 & 25, 1981 at the Holiday Inn Northwest (same place as last year), 7350 N. Hanley Road, Hazelwood, MO 63042. Bob will send you an advance reservation request form when you sign up.

Anheuser Busch has very generously donated some real nice prizes for the convention. One will be for the best display shown - bring your favorite openers or corkscrews - show them off! - a local TV station intends to come and you could be a star!

Hospitality Room - at convention Room #100, Friday, April 24 6PM.

At convention two Clayton Griggs had a display of his Type E wire openers. The display was accompanied by a verse composed by his wife Caroline as follows:

### THE BOTTLE OPENER

A short time back  
We needed this.  
The cap came off  
With a great big hiss.

At a distant glance  
They may all look the same  
Get closer and read  
The describing name.

Now times have changed  
And all we know  
Is a twist of the wrist  
and we are ready to go

To a collector the beauty  
Is in the past  
Searching for one of a kind  
To the very last

If the people were here  
Who have used this display  
What a crowd we would have  
At our convention today.

.....Caroline Griggs

Send news, want ads, etc. for issue No. 11 to Don Bull, 63 October Lane, Trumbull, CT 06611. Issue No. 11 will feature new discoveries.



I recently had the opportunity to spend several hours at the U.S. Patent Depository at the Georgia Institute of Technology in Atlanta. I was there on business and thought I would afford myself a bit of time for research for my new book A PRICE GUIDE TO BEER ADVERTISING OPENERS AND CORKSCREWS (The book will be available late April-early May - a notice is enclosed with this issue). I was able to come up with some interesting design patents related to some of the dates for which info had been sought in issue No. 8. The name John L. Sommer of Newark, New Jersey cropped up several times with his patents being assigned to the J.L. Sommer Mfg. Co. of Newark - a name which I have not seen on any openers. Those patents assigned to him are as follows:

Design Patent No. 41,894 of Nov. 7, 1911 for type A-18 fish.  
Design Patent No. 41,895 of Nov. 7, 1911 for type A-13 auto.  
Design Patent No. 42,305 of Mar. 12, 1912 for type A-28 bottle.  
Design Patent No. 42,306 of Mar. 12, 1912 for type A-7 & A-35 boot.  
Design Patent No. 43,298 of Aug. 18, 1914 for type A-9 baseball player.

In addition he was the designer of type F-12 (#47,016, Feb. 23, 1915) cap lifter and slotted ladle, and type F-13 (#46,702, Nov. 24, 1914 with Thomas Harding) combined bottle opener and cake turner. Thomas Harding also designed type F-18 (#46,311, Aug. 25, 1914) and assigned his patent to J.L. Sommer Mfg. Co.

Types A-4 and A-5 were designed by Harry L. Vaughan of Chicago, Illinois (Design No. 44,226 of June 17, 1913) and the patent was assigned to the Crown Throat and Opener Company of Chicago - C. T. & O. Co.!!! This abbreviation is seen on many Type A openers and also appears several times in the 1922 Vaughan catalog featured in the last issue. Could this have been the original Vaughan Company?

A very important design was that of Augustus W. Stephens of Cambridge, Mass. who was granted Design Patent No. 34,096 on Jan. 21, 1901 for what appears in the patent drawings as type B-18.

We all have a lot to learn about the origin of many types of openers - a few hours digging through patent records at the library can be a rewarding experience. If any of you live near a library with copies of the Official Patent Gazette, go and spend some time and then share your findings with Just for Openers.

-----

BUY - SELL - TRADE (10¢ per word - deadline for July issue is June 1, 1981).

I WOULD LIKE to buy your openers. Please send list with prices and description and picture or drawing if possible to: Randy Burks, 15715 Avalon, S. Holland, Ill. 60473, (312) 333 4752.

WANTED: MICHIGAN BREWERY NAMES. Will trade types and choice openers from my collection for openers with Michigan Brewery names I need. Phil Fouch, 20944 Eastwood, Warren, MI 48089

CORKSCREWS WANTED - all types - with and without advertising. Joe Balaban, 6264 Commonwealth Ct., Indianapolis, IN 46220.

WANTED: All types of openers. Will have lots of traders at the convention - see you there. Art Santen, 6126 McPherson, St. Louis, MO 63112.

-----

Bob Carter recently had an article entitled "A Collectible 'Whatsit'" published in the Antique Trader. The article covered cigar box openers and if you would like a copy, send SASE to Bob at 3809 Spring Meadow Drive, Ellicott City, Maryland 21043. Bob recently turned up a type Z-1 in blue at a local flea market.

-----

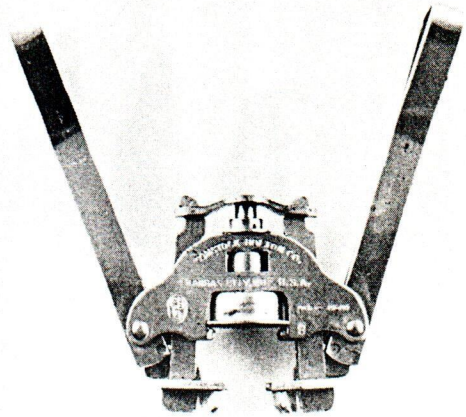
In Joe Cardone's 5th opener mail auction 153 lots were sold for a total of \$507.48 or 3.32 average per opener.

The Type M-59 opener reported in the last issue is not a beer advertising opener. The "Miller" logo is from Miller Fluid Power Corp. of Bensenville, Illinois - manufacturers of "Tru-Seal" pipe fittings.





Another "Mr. Snifter" caricature of Senator Volstead. It is marked "The End of The Trail, Prohibition, Copyright 1933." Volstead is leaning over apparently asleep as is his camel - a takeoff on the famous Indian sculpture. An umbrella is under his arm and the handle of the umbrella serves as the opener when hooked under the cap flange with the top of the cap against his back.



A two-hand bottle capper made by Comstock-Bolton Co. of Kansas City, Missouri. Patented December 21, 1920



A bottle de-capper submitted by Gene Appel. Cup is placed over bottle cap, handle is squeezed and cap is grabbed by three "ears" in cup and removed.

A collection of Type M-3 "retractable" or "slide-out" openers. Note that the top six in the first column are over-the-top style cap lifters and the others are the more conventional lifter type.





Type L-4 mini-bottles with opener produced by the Edward A. Muth & Son Co. of Buffalo, New York from 1936 through ca 1950.



Type L-1 mini-can can openers. Made in West Germany in the late 1950's.



Type K-2 pot metal bar mounted can piercer for 12oz cans. The three reported brands: Falstaff, Blatz, and Jax. Note the differences in shape on the Falstaff opener.

For you lefties.....



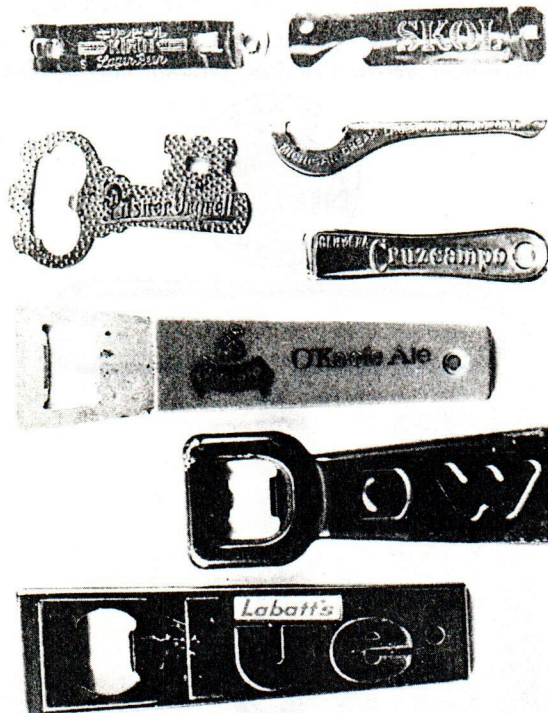
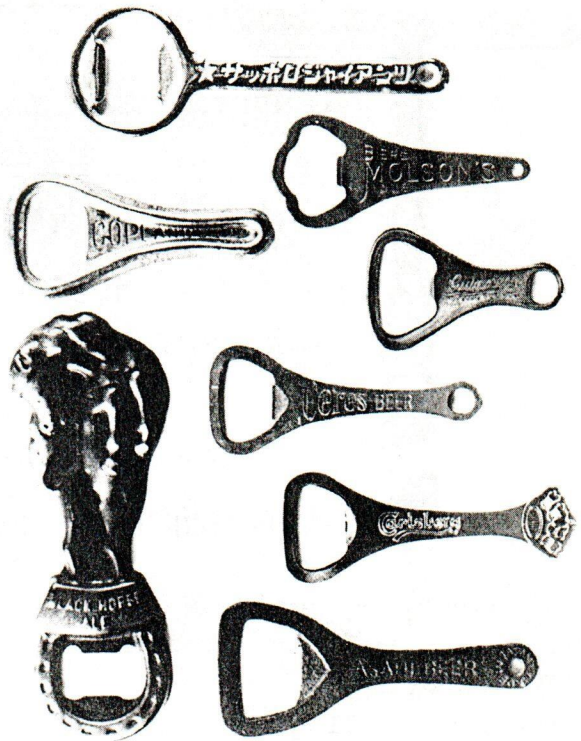
Advertisements from advertising opener manufacturers and suppliers.







These micro-mini metal openers were produced in Japan about 1970. The cap lifter is released by pushing the button on the top. Openers shown here are from English, Irish, and German breweries. No openers in this type have been reported for U.S. breweries.



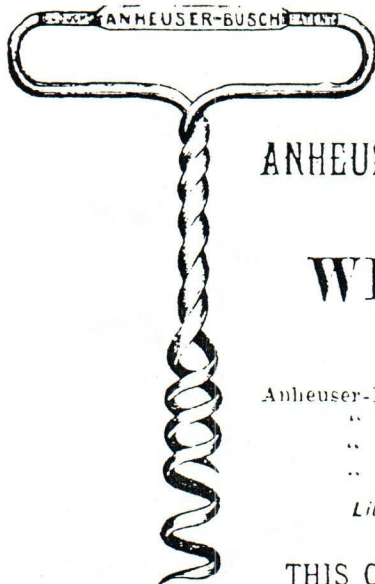
The key above is an ad for the internationally renowned Pilsner Urquell from Czechoslovakia. The small cap lifter with folding plastic Olympia Ale case is marked "Made in England."

The opener on the far right is from collector Scott Parzanese and the corkscrew is Joe Balaban's ad.

More foreign (to U.S.) openers are shown above, below and left. The Black Horse Ale opener is marked "East York Trophies Ltd., A-1 Tool & Die, Toronto." The top and bottom openers in the photo above are cast iron from Japan: Sapporo Beer and Asahi. The opener similar to G-3 at left is marked "Kuntz Brewery Ltd., Waterloo, Ont. (Canada), Michigan Cream, 'Ye Olde Inn Ale'" and mfr'd by "Raula, Henckels, Solingen, Germany."







# PRICE LIST

- OF THE -

## ANHEUSER-BUSCH BREWING ASSOCIATION

PATENT

### WIRE CORKSCREW,

ST. LOUIS, MO.

	Per gross.
Anheuser-Busch Patent Wire Corkscrew.....	\$24 00
"    "    Pocket Corkscrew.....	24 00
"    "    Wooden Handle, Timed.....	36 00
"    "    Rosewood Handle, plated.....	45 00

*Liberal Discount allowed to the Jobbing Trade.*

Bob Chapman got the Anheuser Busch corkscrew ad copy from the A-B archives in St. Louis. The corkscrew ad below is from an 1887 catalog of C. T. Williamson of Newark, New Jersey (submitted by Joe Balaban).

THIS CORKSCREW OBIVIATES ALL PULLING.

In an 1883 C. T. Williamson catalog the company "sell" on the introductory page is as follows:

"We beg to call the attention of our patrons, and all who are interested in the progress of American Manufactures, to the flattering reception our goods have met with during the past few years in this country and in Europe. Notwithstanding the established reputation of English, French and German productions of Iron and Steel Goods, we are pleased to announce that the introduction of our Wire products into all these countries has been attended with unusual success. The Universal Exposition, Paris, 1878, gave them a high Award, and the press throughout Europe unhesitatingly and emphatically accorded us credit for showing them how to make the best and cheapest Cork Screws in the world, which in that 'Land of Bottles and Corks' - as expressed by one journal - 'must be considered a boon of no small magnitude.

"The following is an extract from the London Times, Aug. 22, 1878. Referring to American Exhibits at Paris: - 'Close by it stands Clough and Williamson's 'Wire Cork Screw Machine' which catches a straight piece of steel wire and throws it out a cork screw of such temper that it may be driven through an inch deal plank and not yield a hair's breadth. The deftest waiter will take as long to pull a cork, as this machine to make a half a dozen Cork Screws of Exceptionally Good Quality."

#### CATALOGUE AND PRICE LIST.

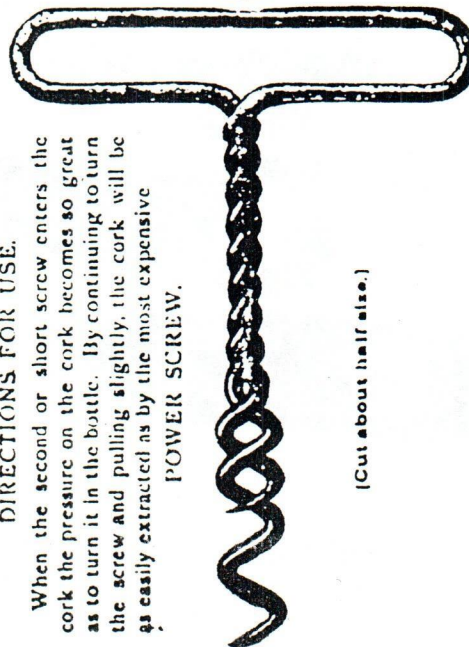
21

### STEEL WIRE DUPLIX POWER CORK SCREW,

(Patented in America and Europe.)

Double and Twisted Shank,  
WITH WIRE HANDLE.

*Warranted superior Cast Steel, hardened and tempered.*



DIRECTIONS FOR USE.

When the second or short screw enters the cork the pressure on the cork becomes so great as to turn it in the bottle. By continuing to turn the screw and pulling slightly, the cork will be easily extracted as by the most expensive

POWER SCREW.

[Cut about half size.]

Nos. 35 & 35 1/4

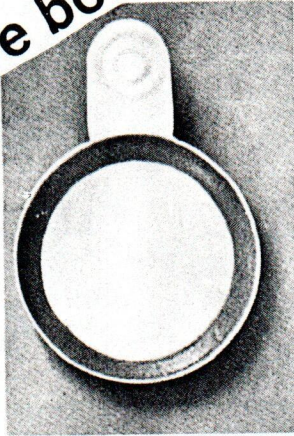
No. 35, TISED.....	Per Doz.	Packed.
" 35, " .....	\$1.00	1 Doz. in a Box.
" 35 1/4, " .....	"	1/2 " on a Card.
" 35 1/4, KICKER .....	1.00	1 Doz. in a Box.
" 35 1/4, " .....	"	1/2 " on a Card.

The "0" preceding a number implies the same goods are mounted on Cards.

**Please use Numbers when Ordering.**



Bye bye bottle opener!



The "Bye bye bottle opener!" ad is from the May, 1964 issue of Brewery Age. The ad shown below and continued on the next page appeared in the October, 1964 issue of Brewery Age. (Submitted by Phil Fouch).

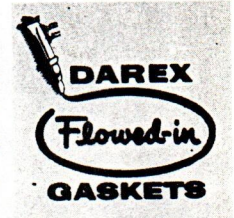
Now bottles "zip" open, quick and convenient as easy open cans.

Just a fingertip pull of the tab peels the new style aluminum closure neatly off your bottled brew. Yet this news-making, sales-making cap actually seals in flavor and effervescence more tightly than ever before.

The flavor-saving secret is a special Dewey and Almy DAREX sealing compound inside the cap. It has a soft, compressible cellular structure for a tighter cling to the bottle lip. Yet it tears cleanly along the score line when the tab is pulled, and *doesn't* stick to the glass.

The new aluminum closure seals securely on all standard bottles, returnable or throwaway. No special glass is needed. Breakage or cracking of the lip by faulty bottle openers is eliminated. And because it's so simple to open the bottle, the cap itself adds sales power to your product, while protecting all the goodness and flavor you've poured in.

Dewey and Almy, foremost name in rigid container sealing, and pioneer in plastic-lined crowns, created the sealing compound and the application equipment that helped make this revolutionary new closure possible.



DEWEY AND ALMY  
CHEMICAL DIVISION  
W. R. GRACE & CO.  
CAMBRIDGE 40, MASSACHUSETTS



Announcing  
the latest thing in  
bottle openers



just like that!



**NEW**

# EASY-OFF CAP

## STEEL CAN AND BOTTLE OPENER WITH CORK SCREW



Nickel plated blade is made of tempered tool steel with properly ground cutting edge.

It has a blade for opening cans, corkscrew and a lever for raising metal caps.

No. 725. Price.....50c. per dozen or \$5.75 per gross.

Packed 1 dozen in a box.

*More ads from the 1928  
Chas. Weiland, Inc.  
catalog (New York).*

## ICE SHAVER.

Extra heavy wire handle. Retinned steel blade. Length over all 10 inches. Nickel plated.

No. 762. Price...\$1.20 per dozen

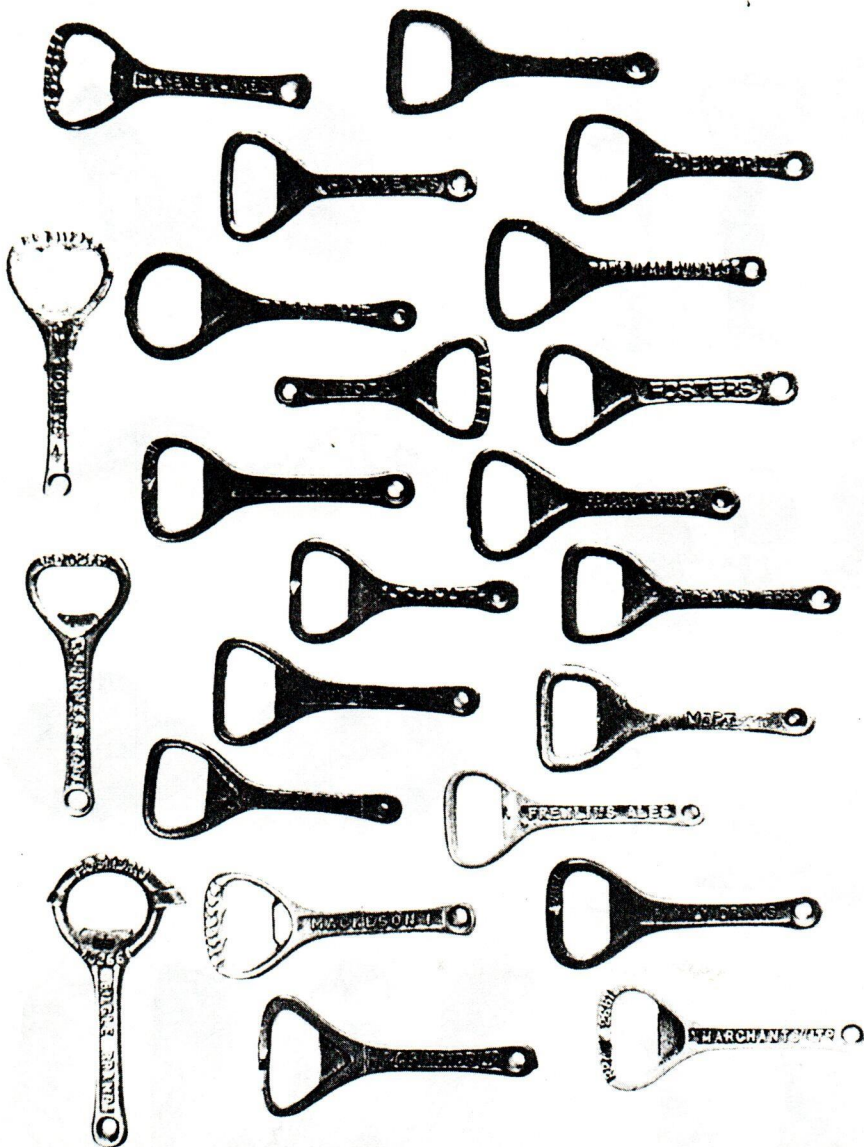
Packed 1 dozen in a box.





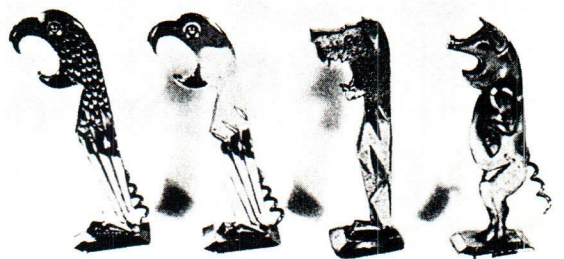
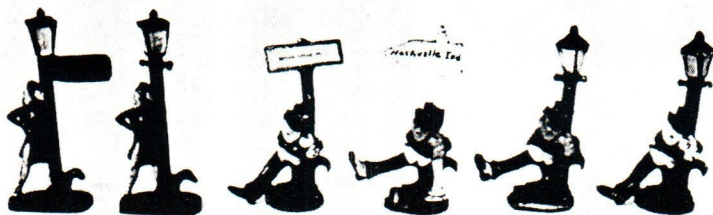
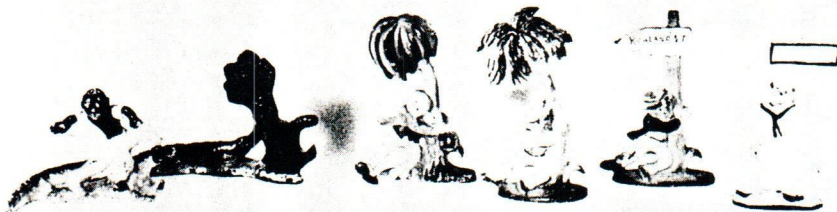
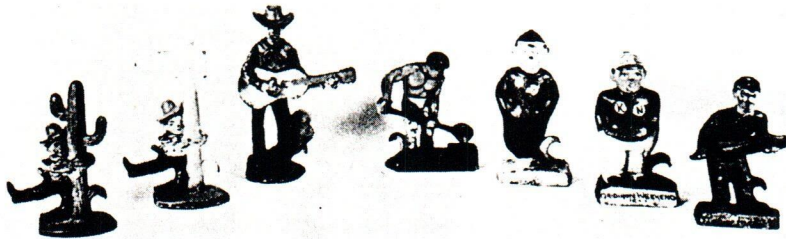
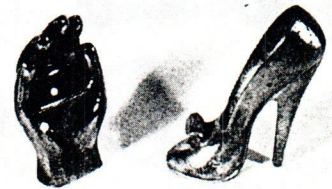
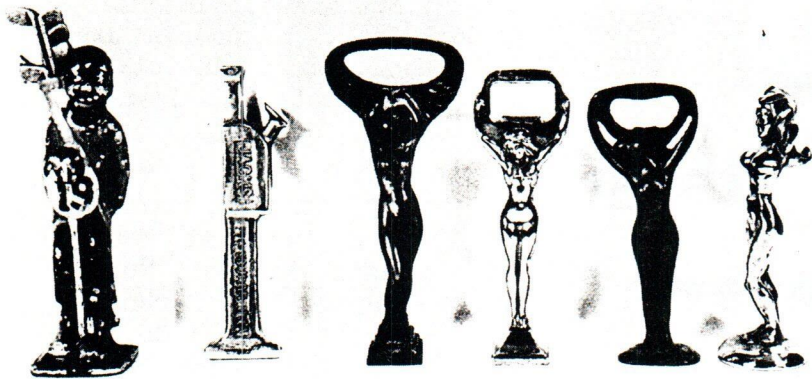
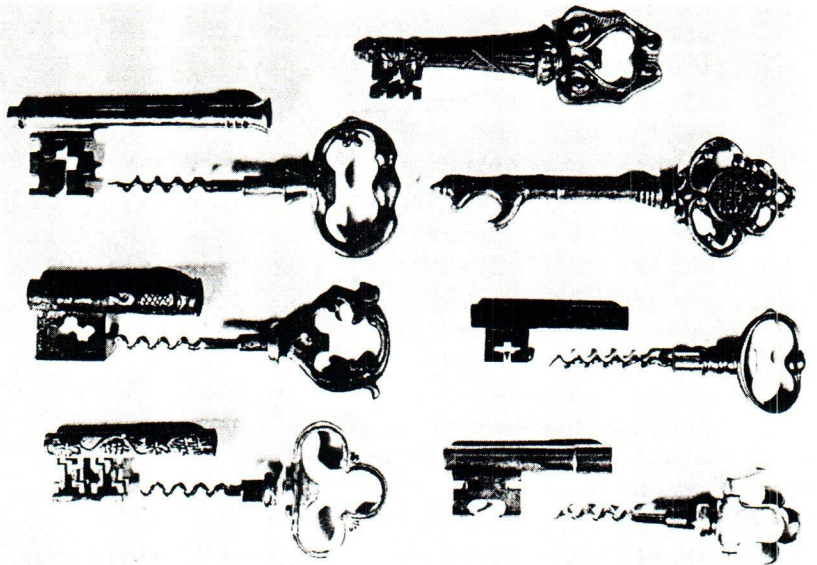
Barry Weston, our subscriber from Australia specializes in D type cap lifters from all over the world and has what is probably the most extensive collection ever amassed. A photo of some of his openers is shown below. Perhaps you have something to add to Barry's collection...here is an inventory of names appearing on his inventory of 1980: ALU, A.S.C., Amber Ale, Ashwell Ale, A.W. Co., Alabaster, Anchor Beer, Apollinaris, Abbots Lager, Benskin's, East Anglian Breweries Ltd., Baggs Mineral Water, Bouchon, Bundaberg Foundry, Ballarat Bitter, Barclay's London Lager, Blue Bow Cordials, Bull Dog Brand Guinness Stout, Baby Bulldogs, Burke's Guinness, Coke-Coca-Cola, Cook's Beer, Cantrell's Ginger Beer, Cobbold & Co., Ltd., Ipswich, Carlsberg, Corona Family Drinks, John Courage, Clayton's Table Waters, Calders Milk Stout, CAG Crown Seals, Cavalier, Cohns, Charrington's Toby Ale, Cascade, Dagro Opener, Dwan Thurles, Debouchoir, Defiant Crown Openers, D.M.W.S. Ltd. Acton W3, Dry Brough's Stout, Drink Wimto, Dog's Head Bass, Dog's Head Guinness, Fly by B.O.A.C., Fulhan Crown Cork Works, Fylde Direct Ltd. Aerated Waters, Fraser & Neave Ltd., Flowers Ales, Farsons' Beer, Fremilns Ale, Friary Stout, Friary Ale, Flannagan's Imperial Hotel, Fosters, Georges Glucose Stout, Guinness is Good for You, Golden Tree d'oranjeboom, Gaymer's Cyder, Henley Brewery, Hammonds, Haussen & Co.

Ltd. South Aus., Imperial Cork Seal, Ind Coopes' Double Diamond, Idris, Invicta, Lawson's Bottling, Lawrence, Lion Ale, McEwan's Pale Ale, Mitchell & Butlers. Mackintosh Plumstead, J. Mills & Son, Marvel, Mission, Meadowland, M.B. & T. Auckland, Mauri Bros., Mackeson, Matador, Mopar, Marchants Ltd., Marchants Sydney, Mullens & Co., Newcastle, N.Z. Breweries Ltd., Olympic Tyres, Piper Export, Perfection, Pinnacle, Phoenix Water Singapore, Quill Morris Ltd., Ross's Ginger Ale, Reliance, Reid's Ale, E. Rowlands, H.D. Rawlings Ltd., Richmond Beer, Resch's D.A., Resch's Lager, Resch's Ltd., Stag Stout, H.&G Simmonds Ltd., Seven Up, Simpson, Stapleton Clean Milk, Source Perrier, Steward & Patterson, Swan, Spa, Strong Romsey, Samuel Smith, Say Barry's Please, Stewart Dawsons, Schweppes, Timaru Ales, Tetley's, Three Horses, Taylor's Ales, Taunton Cider, Tristrams, Tolly Ales, Taylor Walker, Tiger Beer, Tennent's Lager, Whitebread, Watneys, Watson, W.U.D., Wolfe's Schnappes, White's, West End, Woodies, Woodrooffe's, Vichy-etat, York Wine, Tooheys, Tooth's.

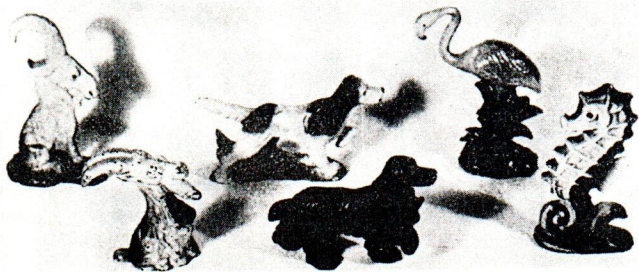
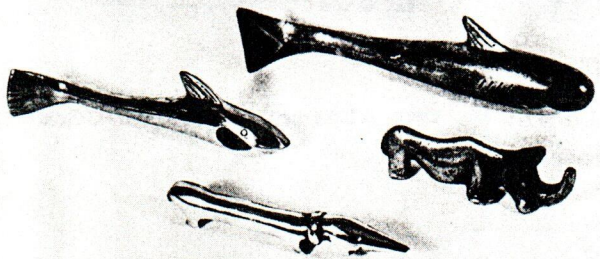
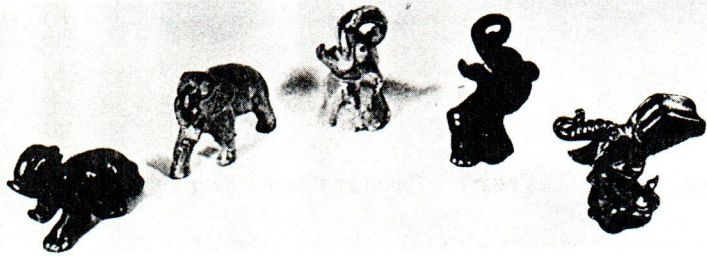
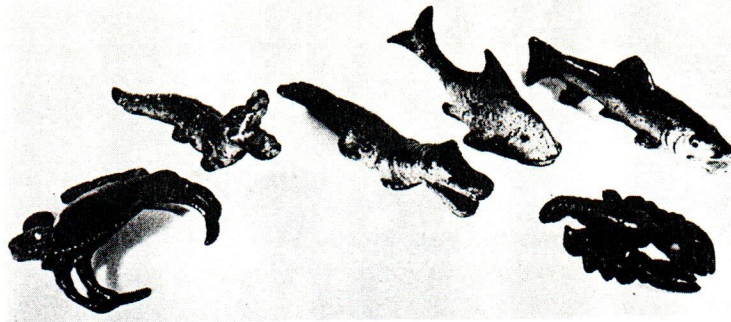




In the July, 1979 issue of Just for Openers Michael Jordan presented a brief introduction to cast "figural openers." The article kindled a lot of interest among JFO subscribers and after some coaxing by a few, I agreed to take photos of some of the figural in my wife's collection. They are shown on this and the following pages. If you can supply any historical or patent information on any of these openers, please let me know.....DB









These carved wood figures have openers or corkscrews attached to the heads and concealed in the body.



Corkscrew - Cap lifter    Cap lifter    Cap lifter

All are marked "Made in Italy" except the figure above which is marked "Syroco Wood, Made in U.S.A." This is probably another "Mr. Snifter" and has a corkscrew attached to the head.



Cap lifter/Corkscrew    Cap lifter/Corkscrew/Cork



Cap lifter/Corkscrew    Cap lifter/Corkscrew



Can piercer    Cap lifter