

Just for openers

A-23

JULY 1984
NUMBER 23

968 Greenwood Ct. Sanibel Island, FL 33957

Hopefully, this issue will reach all of you before you depart for your looked-forward-to vacations which in some cases, will reward you finding openers for your collection in those out-of-the-way places.

BILL McKIENZIE & GARY DEACHMAN thank everyone who attended the Convention and helped make it a success & invite them all back next year. They also hope that the members that couldn't make it will do so the last week in April of '85. Further details will be announced in the Oct. issue. (That issue will also include a questionnaire as to where your preference will be in holding the 1986 Convention. It will also contain your renewal form for calendar year 1985).

We welcome the following who have joined us since the April issue:

ARNOLD HAROLD	P.O.Box 393	North Lima, OH 44452.....	216	549-9827
FALCONE CARMEN	P.O.BOX 310	Pittston, PA 18640.....	717	654-6767
GACH FRANK J.	8709 ALLENSWOOD RD.	RANDALLSTOWN, MD 21133..	301	655-1518
HEMINGER W.A.	R.R. #2	Mason City, IA 50401.....		
HENNECH MIKE	3119 Blossom Ln.	Odessa, TX 79762..	915	337-3146/362-2464
KLAASSEN KEN	2412 E. T. Ave.	Kalamazoo, MI 49002.....	616	323-3192
LEVESQUE ROGER	1551 Sullivan Ave.	So. Windsor, CT.....		
LORETT MIKE	P.O.Box 145	Bailey, CO 80421.....		
MUCKEL GARY	9008 San Francisco NE	Albuquer., NM 87109...	505	822-0786

With the above and 2 more unlisted we now have 189 dedicated collectors. Which reminds me to call your attention to adding Zip Code 45014 to TOM ZRUNO'S address in the Jan. Directory. While you're doing that, make a note to send him a "Cheer Up" card as he had a heart attack and had a quadruple by-pass from which he came thru & is recuperating at home.

This issue contains "NEW DISCOVERIES" prepared by DON BULL in his limited time. DON is commended on the "Splendiferous" effort he put into it while getting "AMERICAN BREWERIES" out. Hope you all have this reference book & if you don't, I urge you to get it.



The "St. Louis 5" ART SANTEN, BOB CHAPMAN, JOHN GOFF, VIC KEOWN and OLLIE HIBBELER plus HARRIET WALDO and BOB VAN VACTOR comprised the Missouri delegation attending the Convention. OLLIE believes that they made the most trades & drank the most beer. They send their sincerest thanks to the Colorado hosts who out-did themselves. They all got to see GARY'S & BILL'S collections at their homes and thought they were super. They all re-newed friendships and made some new ones. They give regards to all their Corkscrew collector friends and want to see all of you in Denver next year. They feel that the expense & effort is definitely worth it. Besides, think of all the trades you can make now that the flea markets & shows have dried up for any new additions.

The best caption for the cartoon was picked by DON BULL as "Where's the CORKSCREW?" which was submitted by ED KAYE.

I had another pleasant visit from STAN SUMMERS of Rochester, Mich. who added an H-6-8 Falstaff to my collection.

JOE CARDONE asks if anyone knows the Brewers of a) FAMOUS SPHINX BEER
b) ENJOY DIAMOND BRIGHT AMERICAN BEER.

QUIZ: Which openers have a) "THE BEER THAT MADE MILWAUKEE JEALOUS"
b) "THE BEER THAT MADE OMAHA JEALOUS"?

I am targeting Oct. '84 as the date to publish the Alphabetical Compo-
osite mentioned in the Jan. JFO, in book form. Start alerting your
spouse, children, friends & whomever that this would be a most welcome
Christmas gift as an addition to your hobby. Look for details in the
Oct. issue. At this point in time, I would strongly suggest that you
get in the habit of using the name of the opener in addition to just
A-1-#, C-12-#, E-14-# etc. on all your trade lists & correspondence as
it is a hassle to figure out what opener it is. Agreed?

JACK LENNON advises that he was into beer cans but is switching to
openers. He was collecting all types of openers and is now concentrat-
ing on beer types. He has a couple hundred. He cleans them with fine
steel wool and car polish compound. He then clear sprays them.

DON KELLY started collecting openers in general on 4/1/82. In 25
months he had 2,385. That's 95.28 per month-13.61 per day-about 1/2
per hour. (Editor's note: I have not checked his figures).

DAVID SCHUHS writes: He has been trying to organize a local club to
discuss our hobby. No such luck. That's why JFO is important to him.
He thanks DON BULL for his continuing efforts to provide excellent ma-
terial. Dave plans to have an E type display at his local museum and
will let us know how it is received. He is considering liquidating his
CAN openers (piercers) to concentrate on BOTTLE openers as there are
enough of those to satisfy his attention for some time.

TONY ZANGHI started collecting beer advertising openers about 3 years
ago after touring the Yuengling Brewery in Pottsville, PA. A friend
gave him an E-14 Yuengling and that started his quest for more. He en-
joys finding out the history of each brewery and when he can locate an
old one still standing in his local area, he takes photographs & talks
to old timers to find out how the local brew tasted.

WANTED

CORKSCREWS with beer advertising. DON BULL 63 October Lane
Trumbull, CT 06611

COCA-COLA openers, especially unusual flat and figural styles.

THOM THOMPSON Huntertown Road Versailles, KY 40383

CORKSCREWS (beer or non beer-marked or unmarked) any type or shape.
Willing to buy or trade from my list of over 700 bottle openers.

HENRY BODNAR 7154 Freeman St. Niagara Falls, Ont. L2E 5V5 Canada
F-6-12 Uhl's Bethlehem, PA. Your choice from my openers TONY ZANGHI
605 Leithsville Rd. Hellertown, PA 18055

A-9s other than #3,4,9,12. ED KAYE 968 Greenwood Ct. Sanibel, FL 33957
BOTTLE shaped or bottle pictured openers. Buy or trade. GARY DEACHMAN
877 Mobile St. Aurora, CO 80011

NORTH CAROLINA openers. Have many trades or will buy. JOHN STANLEY
P.O. Box 11023 Winston-Salem, NC 27116

E-5, M-29, M-30 non-beer for 50¢ cash or \$1.00 trade. Must be readable.
DON KELLY 1735 So. 53rd Lincoln, NE 68506

Interesting MILLER openers...A's, D's, E's, P's etc. Fair prices paid.
RALPH PHILLIPS 81 New Britain Ave. Hartford, CT 06106

TRADES

"OLD SNIFTER" chrome with black hat VG+ for best offer by 7-15-84 Par-
ticularly want type "A" BILL ENNIS 12220 14th Dr SE Everett, WA 98204
HARLEY DAVIDSON BEER CANS to trade for beer openers. DENNIS ORTH
8335 N. Ann St. Milwaukee, WI 53224

SELLING

BEER MEMORABILIA coasters, signs, trays, openers and more. Send for
catalog. BREWMANIA LTD. 7619 Webbwood Ct. Springfield, VA 22151

FREE ads for the Oct. issue will be accepted on a first come basis

DEADLINE for the October issue is AUGUST 31. Please co-operate.

QUIZ answer: (a) A-17-27 Rahr's & B-24-81 Schell's (b) B-21-318 Wilber

NEW DISCOVERIES — JULY, 1984

Although this opener was never used as a "beer advertising" piece, it deserves a type classification of its own. The opener was the creation of Gary Deachman and Bill McKenzie as a souvenir of the 1984 opener convention. The back is marked as follows:

"Limited Issue, Sixth
Annual 'Just for Openers'
Convention, Denver, Colorado
1984."

The label pictured is the cover
of the brochure accompanying the
opener. It contains the following
information:



X-1

"1. The 1984 Just for Openers Convention opener was designed from the pre-prohibition label illustrated at the left. Upon close inspection the label reveals the words 'TRADE MARK' at the top of the balloon. For the purpose of an opener the words 'MILE HIGH BEER' and 'CONSUMERS BREWING CO., DENVER, COLO.' were transposed to the surface of the balloon, and the barrel altered to have a two-dimensional look. The Consumers Brewing Co. operated from 1909 to 1910. In 1911 it became known as the Capitol Brewing Co., which continued in business until 1915. The brewery was located at 3701 Wazee. Many old buildings still remain at the site, but none bear the brewery's name.

2. Since the brewery was so short-lived, few mementos remain. Reported to exist are: - wire formed opener, 3-5 known - flat key-shaped opener - 1 known - embossed bottle 25-40 known - plain bottle with label, 2 known - label by itself - 1 known - etched glass - 1 known - lithostone for printing letterhead, 1 known. These items are highly valued and cherished by Colorado breweriana collectors. 3. Only 50 openers were made for this year's convention. They are brass-plated, and were manufactured by a local company. We could not think of a more appropriate design to represent Denver, the Mile High City, and we hope that future conventions will carry on the tradition of a commemorative beer advertising opener.....1984 sponsors - Gary Deachman, Bill McKenzie."

DISCOVERIES (Limited to types of beer advertising openers and corkscrews not previously shown in BEER ADVERTISING OPENERS- A PICTORIAL GUIDE, The Price Guide, or "Just for Openers"). Photographed and classified by DON BULL.

- A-46 Elk Head and Bottle. Like A-16 but no prestolite key. DRINK RAHR'S ELK'S HEAD OSHKOSH, WIS.
- B-53 Combination cap lifter, button hook and prestolite key. GIPPS BREWING CO. PEORIA, ILL. "AMBERLIN BEER" (Brau Haus)
Also: RICHTER BREWING CO. ESCANABA, MICH. "PENINSULA PRIDE" (L.Geyer & D.Wilcox)
- E-26 VIRGINIA BREW. CO. ROANOKE, VA. / SAME (Braeuner)
- E-27 KAMM & SCHELLINGER CO. MISHAWAKA, IND.
- F-28 Combination spoon/corkscrew. Corkscrew on back. Note deep round bowl. REX CAFE F.A. MAGNUSON PROP. HAMM'S & GRAIN BELT BEER - SIZZLING STEAKS PHONE 955 - MOOREHEAD, MINN. (Marked B&B St. Paul, Minn. Pat. Pdg. -- STRINY)
- G-3a Like G-3 but with corkscrew. YE TAVERN BREW
- J-12 Can piercer marked: BUSCH BAVARIAN BEER on bottle. Reverse: ETERNAL VIGILANCE IS THE PRICE OF LIBERTY. IF WE UNDERSTAND THE AMERICAN WAY, WE WON'T ACCEPT SOCIALISM, COMMUNISM OF UNLIMITED GOVERNMENT (AMERICAN FLAG -- (SHERMAN)
- K-11 Bar mount can piercer marked on underside of handle (cast into it) FALSTAFF. Base marked Pat. 2,569,123 Anderson Co. Box 1762 B'Ham, Ala. The patent was issued to Jay Earl Anderson of Dallas, Texas on Sept. 25, 1951. (SANTEN)
- M-77 4 3/4" cast iron combination tool: Ice cracker, tack hammer(?), screw driver, cap lifter and any thoughts on what's in the middle. Marked PFEIFFER'S / FAMOUS. Pat. Mch. 5, 1901. (BRAU HAUS)
- N-58 Cap lifter and bottle opener resealer marked Sav-Kap Boston Pat. Dec. 7, 1926. BRUCKS THE BRUCKMAN CO. CINCINNATI, O. (BRAEUNER)
- N-59 Comb. cap lifter and knife in shape of sack of malt. NATIONAL MALTING COMPANY, PATERSON, N.J. USA. It was made by Paul A. Henckles Germany. (BRAU HAUS)
- N-60 Double blade (knife & cap lifter) made by Utica Cutlery. COMPLIMENTS WEST END BR'G CO. / UTICA CLUB BEER-XXX-ALE (BRAU HAUS)
- N--- The knife/scissor piece is marked COORS. It does not have an opener, so is NOT assigned an alpha-numeric type.
- Q-10 For modern cans as shown on instructions. SCHMIDT BEER (STRINY), THIS BUD'S FOR YOU (REED) MEISTERBRAU (KAYE)
- P-67 A Williamson corkscrew marked Patent Pending on end of wood handle which is cut flat at top to accommodate a plate marked COMPLIMENTS OF THE GOTTFRIED KRUEGER BREWING CO. NEWARK, N.J. U.S.A. (An original about 1896--BANDY)
- P-68 Comb. corkscrew/can opener marked SURE-CUT can opener. Pat. 7-19-04. COMPLIMENTS OF THE PEERLESS PRODUCTS COMPANY MANUFACTURERS OF HIGH GRADE LIQUID MALT EXTRACT ALREADY PREPARED 3250 MITCHELL NEAR GRATIOT PHONES MELROSE 2464, 5046, 5047. WE DELIVER (DANZIGER)

- P-69 Cap lifter/knife/corkscrew. C. PFEIFFER BREWG. CO. (BULL)
- P-70 COMPLIMENTS MINNEAPOLIS BREWING CO. MINNEAPOLIS, MINN. GILT EDGE.
Marked The Detroit Pat. July 10, '94. (Pat. #522,672 of C. Pudderfoot)
Compare this to type P-2. (BULL)
- P-71 As described in BRAU HAUS auction: "In 1876 Anheuser-Busch introduced Budweiser and it was bottled by C. Conrad & Co. of St. Louis. This combo c/s-wire breaker is marked C.C. & Co. Moss Rose". Is it from Conrad? If so, what was Moss Rose? The c/s was made by Henry Boker's Improved Cutlery Co.
- P-72 Ornate corkscrew marked STERLING 5827 on handle. Silver sheet artwork wrapped around ivory handle. COMPLIMENTS OF ROCHESTER BREWERY and picture of hand holding a glass of foamy beer on top. (BRAU HAUS)
- P-73 Corkscrew similar to P-1 but with "button" to stop screw penetration. A. B. C. BOHEMIAN ST. LOUIS, U.S.A. (BULL)
- P-74 Corkscrew/cap lifter similar to types P-6 & P-31 in wood sleeve but cap lifter has single fret at top. FINK BREWING CO. HARRISBURG, U.S.A. (REED)
- P-75 Wood handle corkscrew marked PABST MILWAUKEE. This is just like the Williamson c/s shown in photo #1 (c/s 5) on page 5 of the price guide except it has a spring to retain the bell instead of a cotter pin - must be they ran out of springs temporarily! It is an original - not been tampered with - has anyone seen another with a beer name? (BULL)
- P-76 A Robert Murphy corkscrew marked SCHLITZ ST. PAUL. Schlitz never had a brewery in St. Paul so one must assume it was a sales agency. (BULL, VOLLRATH)
- P-77 Wood handle corkscrew with advertising plate on top marked VAL BLATZ'S WIENER BEER MILWAUKEE. (SHERMAN)
- P-78 Wood handle corkscrew marked ROCHESTER BREWING CO. (BULL)
- X-1 See description on page 3 this issue picturing the opener.

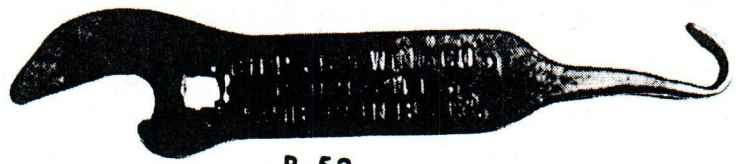
ATTENTION - PLEASE READ CAREFULLY

NEW DISCOVERIES: Are any domestic (U.S.A) openers & corkscrews that have NOT been illustrated and assigned an Alpha-Numeric type in "BEER ADVERTISING OPENERS-A PICTORIAL GUIDE" nor any "NEW DISCOVERIES" featured in JFO issues of July 1981, April 1982, April 1983, Oct. 1983 and this issue. The actual items are to be sent to DON BULL P.O.BOX 106 (for UPS, 63 OCTOBER LN.) TRUMBULL, CT 06611 for photographing and assignment.

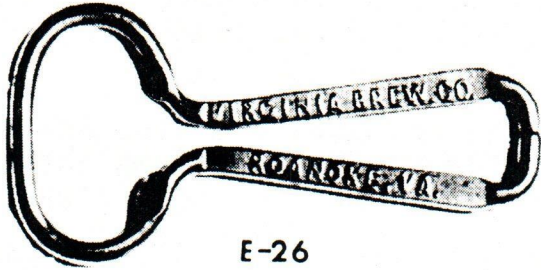
NEW ADDITIONS: Are any names of breweries or brands that have not been listed in the above and in past issues of JFO. These are to be sent to ED KAYE 968 GREENWOOD CT. SANIBEL, FL 33957. Special note: when sending more than one listing, PLEASE arrange them by type #s-that is, A-1, A-2, A-3 etc. not just listing them as A-1, J-5, G-8, E-14, L-3, C-13 etc. as they can be easily overlooked. (Then again, I might return them to you for listing them properly). Also be sure that (it-they) (has-have) not been listed previously. Check both sides of the opener. The forthcoming Alphabetical Composite will be a great help to you.



A-46



B-53



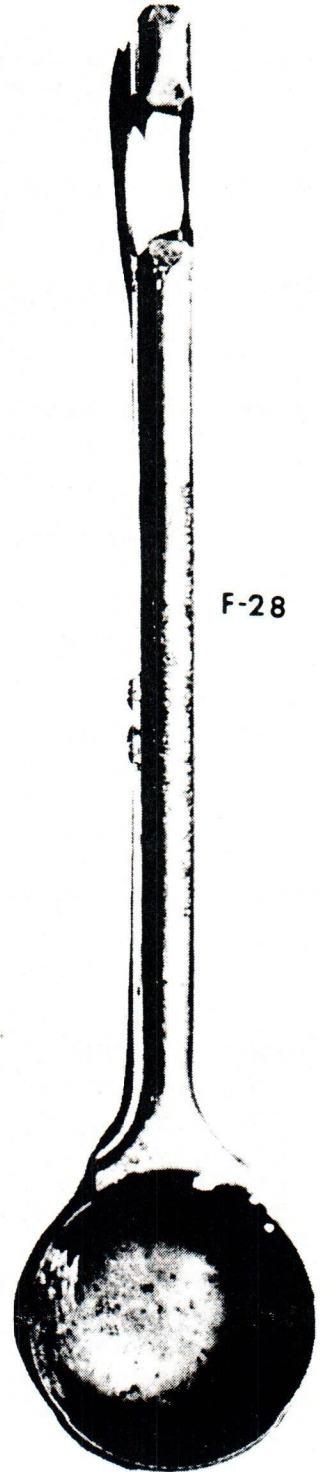
E-26



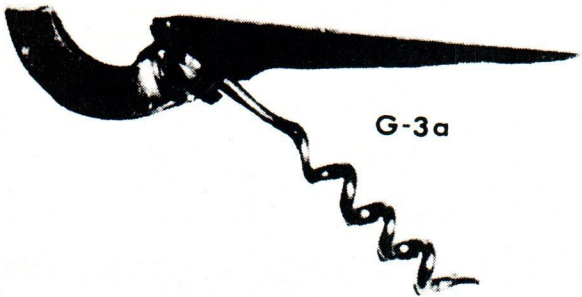
E-27



J-12



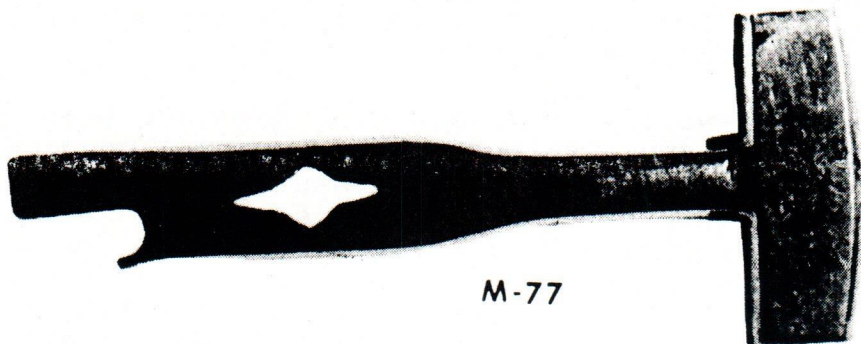
F-28



G-3a



N-58

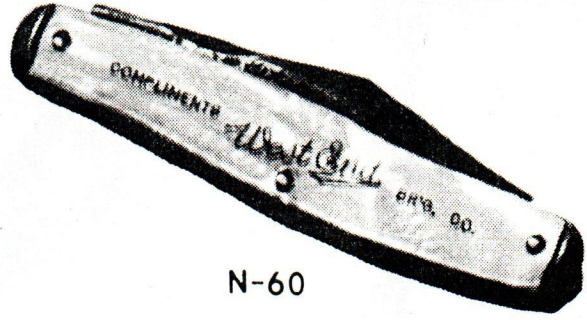


M-77

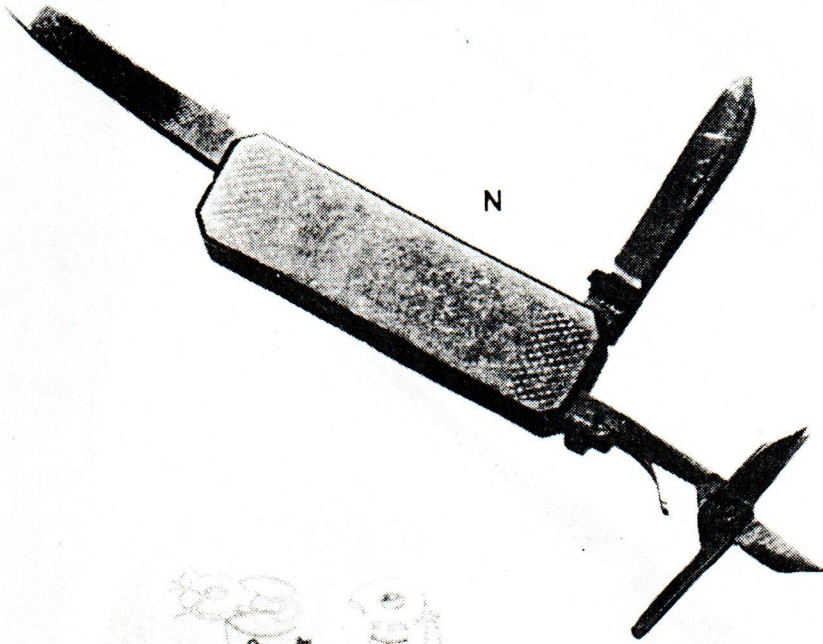
N-59



N-60



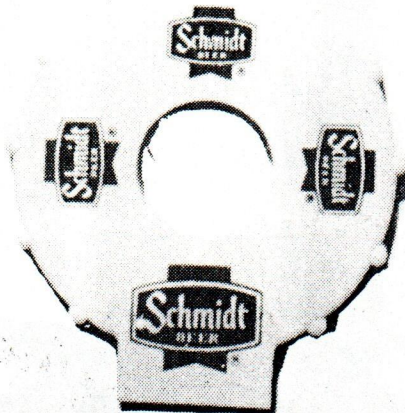
N



The Topper

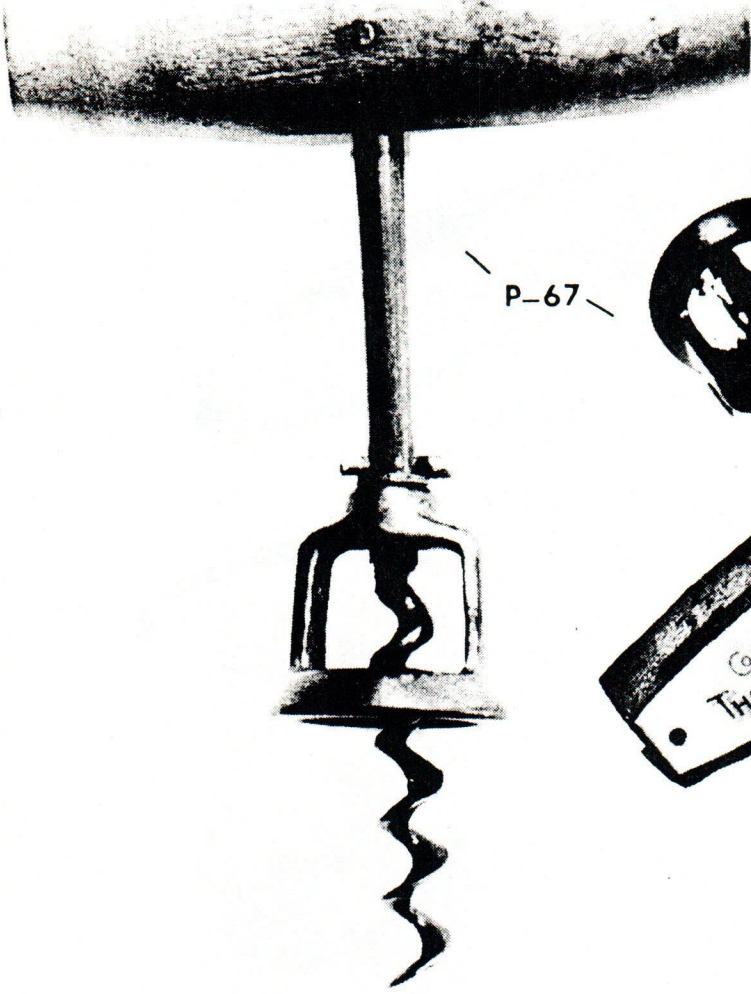
ALL PURPOSE BEVERAGE
BOTTLE AND CAN OPENER
THIS INFO CARD WILL BE OBTAINED WITH ALL TOPPERS
UNTIL DESCRIPTIVE MATERIAL IS AVAILABLE.

Q-10



T-1

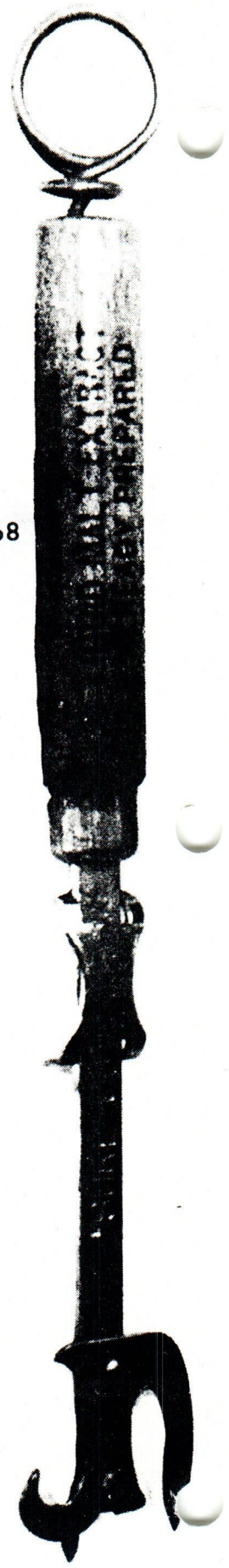




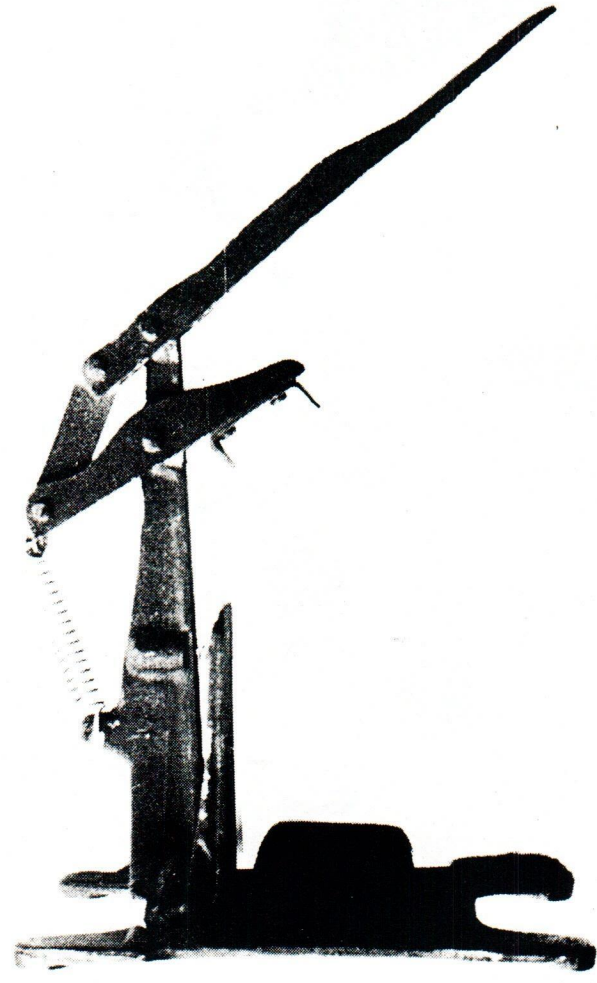
P-67



P-68



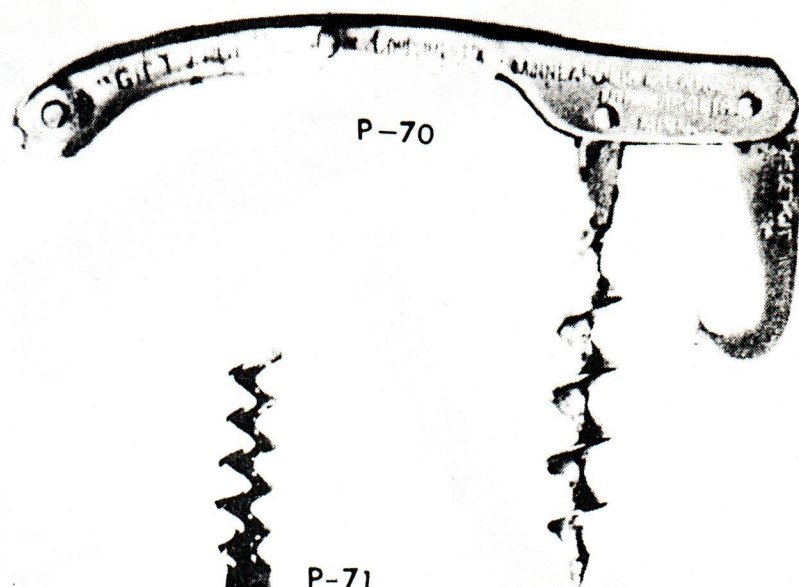
- K-11 -



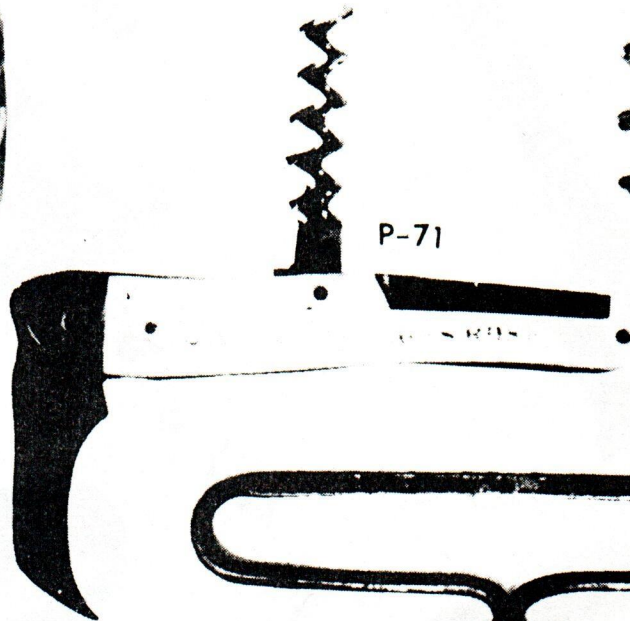
P-69



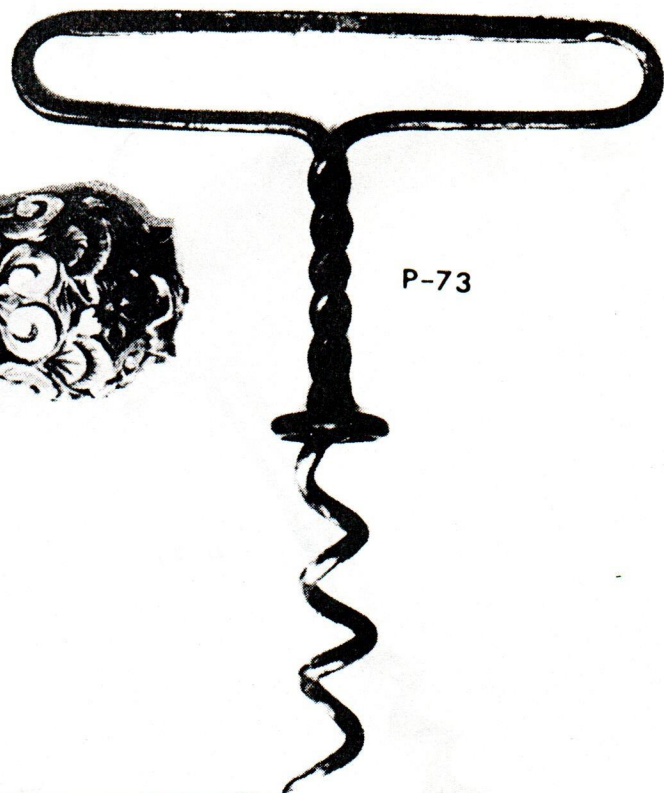
P-70



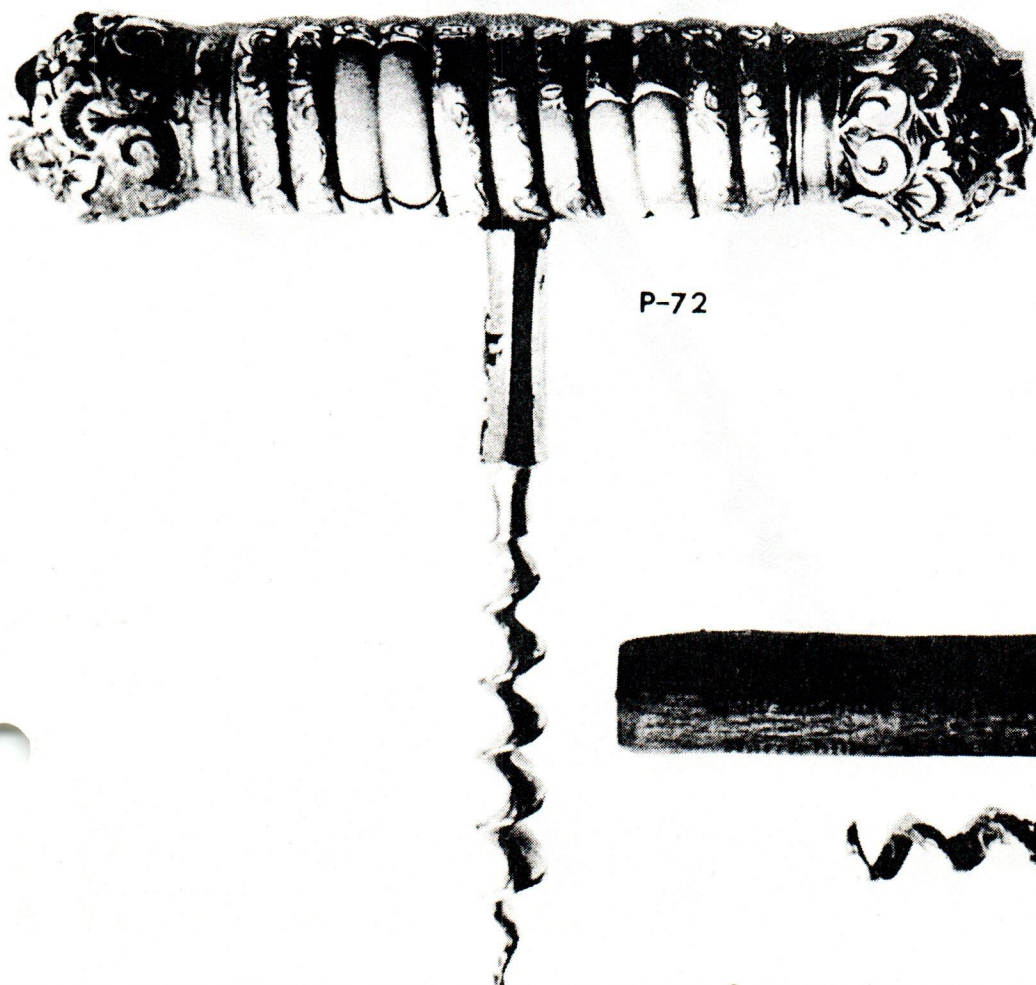
P-71



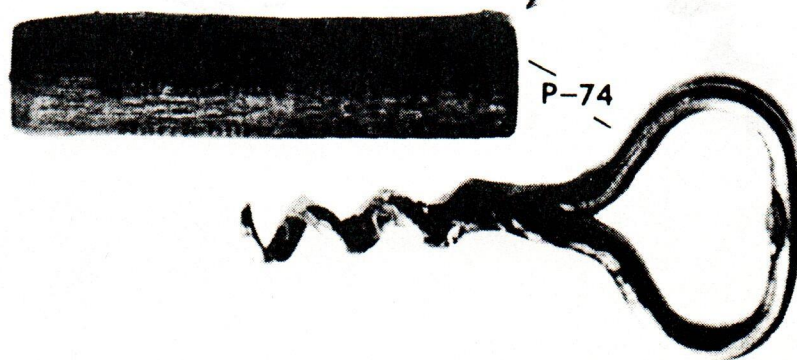
P-73



P-72

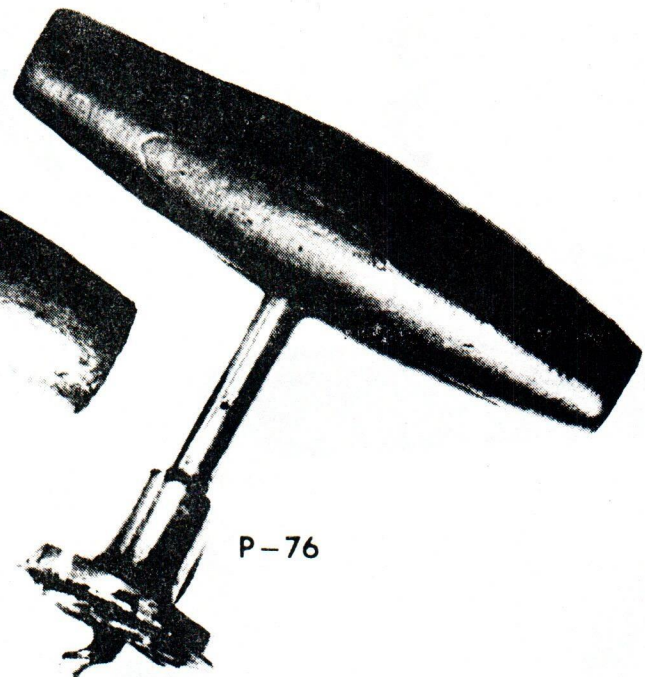


P-74





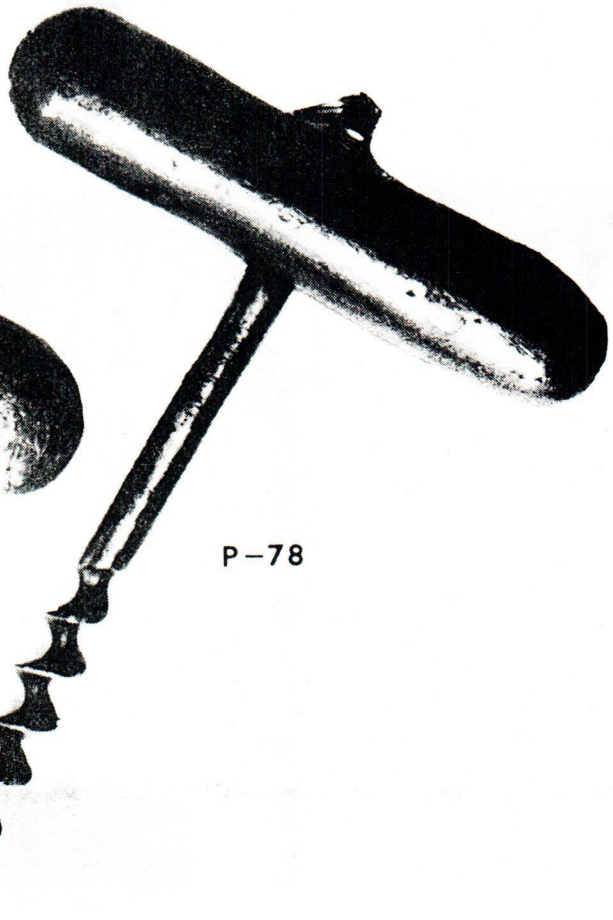
P-75



P-76



P-77



P-78

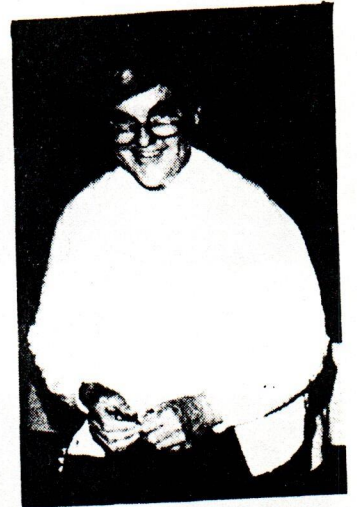
1984 CONVENTION — DENVER, COLORADO



1.



5.



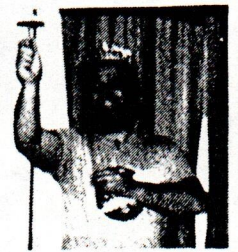
9.



2.



6.



10.



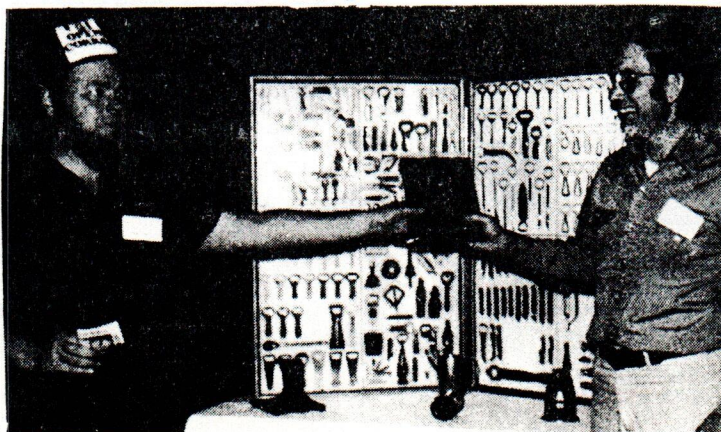
3.



7.



11.



4.



8.



12.



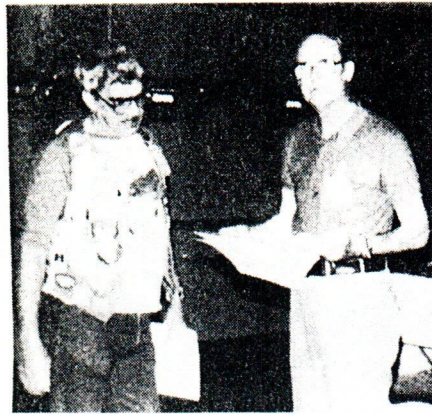
13.



16.



14.



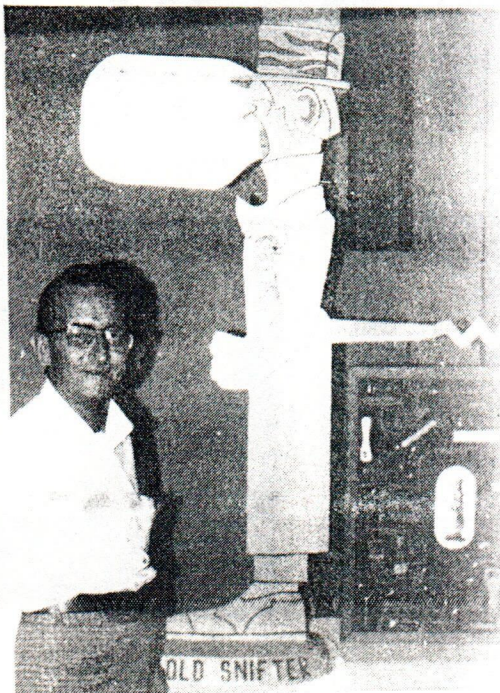
17.



18.



19.



15.



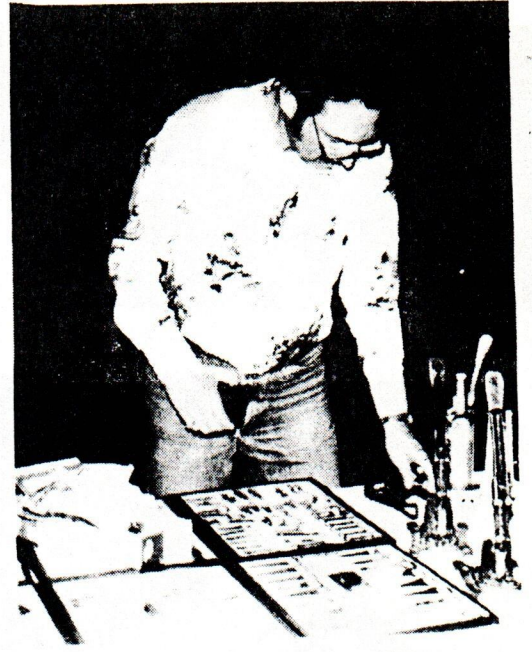
20.



21.



22.



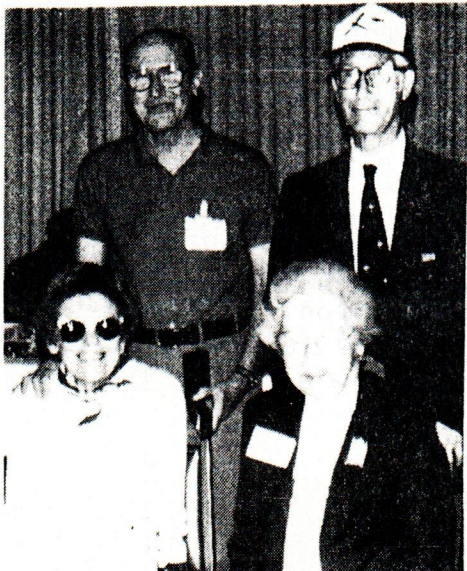
23.



24.



25.



26.

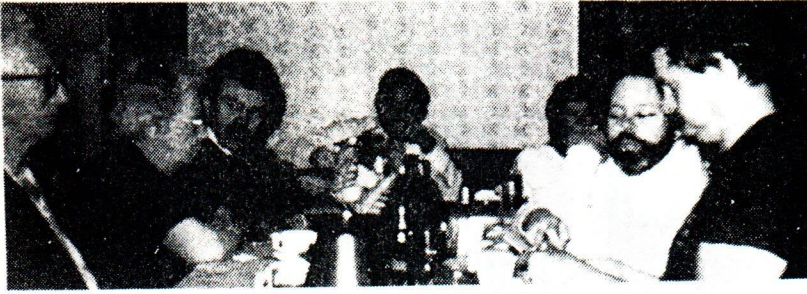


27.



28.

PHOTOS



29.



30.



31.



32.

(1) The crew that put it all together. (2) & (3) Crowded hospitality room. (4) Gary Deachman presenting 1st prize award to Glenn Walling for best display. (5) Eric Stiles our youngest member (11 years old) showing AMERICAN BREWERIES that Don Bull autographed and gave to him. (6) Camera shy Jack Ford. (7) Herb Danziger wonders why he didn't bid higher for the corkscrew (8) Ollie Hibbeler says YOU weren't there. (9) Smiling Harriet Waldo. (10) Gary Deachman who did very well as an auctioneer. (11) Bill McKenzie presenting third prize award to Tom Morrison. (12) Tom Lutz ponders how Ollie Hibbeler-photo 8-beat him to the George Killian's. (13) The Greggs of Kansas. (14) Roy Scanlan looks for that elusive opener while Pearl Kelly helps him. (15) Ed Kaye by Bill McKenzie's second prize display. (16) Don Bull tries to convince Don Kelly that the opener is a good buy while Ed Kaye is neutral. (17) Vic Keown is a good listener to VanVector's presentation. (18) Ruby Claus models a Chicken Shirt. (19) Do I hear a higher bid? (20) Bill McKenzie extols the souvenir opener while Gary Deachman gets ready for the rush of \$\$\$s for them. (21) The Wallings of Calif. (22) Eldon Gregg looks on (Miss BULL-U-TIFUL looks the other way) while Don Bull

"Raspberries" (about the joke he told?) Del Haarberg and Jeff Mattson. (23) Bob Chapman setting up. (24) The Kellys of Nebraska. (25) The Biehls of Illinois. (26) Two Bobs and two Pegs-VanVectors and Nugents. (27) Art Santen and Gary Deachman are all smiles about their trade. (28) John Goff is amazed at the activity of the auction. (29) & (30) A hearty breakfast in Golden, CO. (31) & (32) Waiting for the shuttle bus for the tour of the Coors brewery.