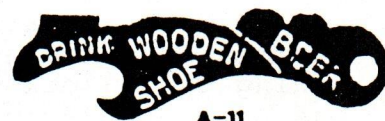


# Just For Openers



968 GREENWOOD CT. SANIBEL ISLAND, FL 33957 (813) 472-0004

This issue is the mid-point of our collecting year. Normally it would feature NEW DISCOVERIES by DON BULL. His move to a new residence from Trumbull, CT to 20 Fairway Dr. Stamford, CT 06903 prevented it. (Note: send all correspondence to this address NOT to his old P.O. Box. Those of you who had sent him New Discoveries, please be patient for their return).

WELCOME TO OUR NEW MEMBERS & RENEWAL SINCE THE LAST ISSUE:

- BARREN Mark 6806 Bear Ridge Rd. Lockport, NY 14094.....716 625-8258
  - BURKE Roger A. 554 So. 4th West Brigham City, UT 84302.....
  - CHAPMAN Bob 391 Barceleona St. Peter, MO 63376.....
  - CORY Frank A. P.O. Box 216 Riverton, UT 84065.....
  - SJOBORG Tim 549 22nd St. Apt.#2 Ogden, UT 84401.....
  - SMITH Henry M. 5459 Woodhaven Dr. Cincinnati, OH 45248...513 451-2641
  - WATKINS Kenneth M. R2 BX 187 Unadilla, NY 13849.....607 369-3351
- Please correct GARY DEACHMAN ZIP code in the Jan. directory to 80011.

Many favorable comments were received on the last issue which featured Coca-Cola openers. Thanks to all who took the time to write. The following two excerpts from letters received tell it all:

"I thoroughly enjoyed the well illustrated, interesting and most informative article. I had no idea that there was such an incredible number of "Coke" openers extant!!! Please convey to THOM THOMPSON my thanks for such a well written article. I appreciate very much the time and effort he took to write such a fine piece!!!"

PETE CHRAPLIWY EL PASO, TX

"Let me state that your last issue was one of the best that had been put out. If you did the layout work on the "Coke" openers or if THOM THOMPSON did, it was tastefully done. Though I don't collect them I still read every bit of the article".

TED STRINY ST. PAUL, MN

Another article on a specialty facet of openers appears in this issue.

What about YOU writing about YOUR specialty or research you have done. For example, in the Jan. '85 issue, I stated that I would not accept any listings of BOTTLING companies unless there was proof that they were associated with beer. TONY ZANGHI wrote: "I am submitting a G-21 Northampton Bottling Works. In tracking down proof, I talked to the President of the Northampton Historical Society. I was given the name & phone # of Northampton Brewing's 80 year old Chief Engineer, Andrew Rubasky who was in that position from 1933 to the brewery's demise in 1950. I told him about this opener and he advised that the bottling works was part of the brewery, a separate building across the street. After the beer was brewed & aged (Tru-Blu, Old Fashioned Ale, Porter etc.), it was piped underground to the bottling works. He stated that they also did canning there. We talked for quite a while and he had an excellent memory of all the old breweries in the Allentown, Bethlehem and Easton area of Pennsylvania".

TONY also advises he has two more additions, A-9 & F-6 for Top Notch Products and refers to B-19-142 Top Notch which has Malt & Hops on it. Additionally, he has a B-15 Pur-Ox Beverages which were soft drinks produced by Horlacher of Allentown, Penn. during Prohibition. Further, he points out that the April, 1983 issue of JFO showed an ad of the Grammes Co., a manufacturer of openers. DON BULL had a footnote to it asking us to look thru our collections for any marked Grammes. TONY has a type B-39 put out by Grammes as an advertising piece so he believes the B-39-1 Bushkill was produced by them. He has other brewery openers that have Grammes stamped at the bottom of them.

J.Y. FORD sent a copy of a Richter Bottling Works ad from the Fresno County Sportsmen's Club Bulletin (circa ?) indicating that "Sportsmen Drink Eastside, The Perfect Brew". This correlates with the A-9 addition he has of Richter Bottling Works on it. (ED'S note: See A-33-3 Rainier).

"Fellow collectors:-

Since I've never joined a collector's club, I don't know if it's correct procedure to send a bit of information about myself but it seems like a good idea. I was born in Columbia, Miss. Oct. 29, 1949. I work in construction but my main interest is "Junktique" and the search for it! My collection spans a wide range of Americana. It can best be described as small novelty & advertising pieces from the "Turn of the Century" to the 30's (after that, my interest fizzles). I collect buttonhooks, cigar cutters, match safes, all with ads & Columbia Exposition souvenirs etc. etc. BUT there's a special place in my heart & showcase for my little figural openers. I only collect the flat pocket ones, not the three dimensional table tops such as the



parrot, braying mule etc. An opener in mint to fine condition is undesirable as I like them to have a bit of "character" as though someone cared enough to carry & use it. I have one that some "character" very neatly stamped his initials on the blank side. It is one of my favorites".

Sincere regards,  
DAVE GUICA  
P.O. Box 7162  
Baytown, TX 77522

BILL ENNIS wrote: I would like to add a bit of history or rumor to the Potlatch (B-11) opener. On page 11 of the Jan. 1981 issue of JFO is pictured the Rainier opener with the "standard" Potlatch symbol. That symbol was in wide use on various souvenirs (which are very collectable in the Seattle area). The B-11 shown in DON BULL'S "Beer Advertising Openers" and on page 5 of Oct. 1984 JFO has a variation of the Potlatch symbol (one of three variations) pointed in the opposite direction and capped with a spire with a question mark. An explanation I got from an old antique dealer for the spire & question mark: In 1911, a proposal was made to build in Seattle the tallest building "west of of the Mississippi". There was considerable doubt that it would ever be built. This is reflected on the Rainier Potlatch symbol. However, it was built in 1913 and today is still the favorite building of the majority of Seattleites despite being dwarfed by numerous other ones. The Smith Tower has a top like the Potlatch symbol. I believe that the Rainier opener was the only Potlatch symbol to use the spire and the question mark. I have a B-11 with the spire and question mark.

New member, HENRY M. SMITH of Cincinnati sent photos of the front and back of an E-10 UL Fairmount. The opener and a bottle are the only known artifacts of this Cincinnati brewery. Henry collects all Cincinnati & Hamilton, Ohio-Newport & Covington, Kentucky & Lawrenceburg & Aurora, Indiana breweriana (calling it the Cincinnati area). He enjoys taking photos & has over 2,000 relating to this subject.

MIKE HENNECH of Irving, TX teaches Texas history to 7th graders in addition to being a coach. This Summer, he is doing research on Texas breweries & writing a book about them. He needs help from us relating to obsolete ones including their openers.



The annual "post convention" meeting was held at the rolling estate of BOB CHAPMAN'S bachelor pad. He hosted ART SANTEN, VIC KEOWN & JOHN GOFF. Lou Kovarik & Ollie Hibbeler could not attend. JOHN was in disbelief (while nursing a Stag beer) of the favorable comments regarding the Denver convention. ART made a big production (as usual) of the latest titillating opener addition to his collection. BOB also writes: "it was a pleasure to visit with us collectors. With the Good Lord willing & if ED KAYE keeps the 'gators out of his back yard, all of the St. Louis bunch will attend next year's convention".

The 1986 opener convention is scheduled to be held in Fort Myers, FL & will be hosted by your JFO Editor. Anyone wishing preliminary info on the attractions to visit in this area, send me a post card. I have 25 swimming pool-side rooms pre-booked for us.

The rejected "not to art work" JFO patch was shown at the convention & all wanted it regardless. Since it was in dispute, I could not release them. The dispute is supposedly resolved & the supplier will produce them correctly.

---- WANTS-TRADES ----

Cigar box openers-will buy or trade cast iron figurals & other beer openers. GLEN ENLOE 10530 E. 9th St. Independence, MO 64053.

Have mostly Cincinnati openers to trade for other areas. Send for list HENRY M. SMITH 5459 Woodhaven Dr. Cincinnati, OH 45248.

Have 300 traders for other brewery openers or corkscrews, especially Rainier. Will buy or trade from my collection for needed Rainier. BILL ENNIS 12220 14th Dr. SE, Everett, WA 98204.

Have four I-6-20 Grand Prize to trade for TEXAS brewery openers. MIKE HENNECH 2602 Chevy Chase Irving, TX 75062.

Have 3 sets of '84 & '85 convention openers. Will trade for C-2-2 Tech or C-24-2 U.S. Brewing Co. or L-6-1 Texas or L-2s or M-1s or M-2s I don't have. GARY DEACHMAN 877 Mobile Aurora, CO 80011.

Will buy or trade for OHIO openers that I need. JOE CARDONE 1833 Rosemont Blvd. Dayton, OH 45420.

---- SELLING ----

"ZANG'S MINI AUCTION": A-5-5 Leisy (fair) C-2-1 Phoenix (exc.) E-1-10 Kuebler (good) G-1-33 Kings (good) H-5-3 Columbia (exc.) openers go to highest bidder of each. Auction closes 8/12/85. ANTHONY T. ZANGHI 605 Leithsville Rd. Hellertown, PA 18055.

FOR THE OCTOBER ISSUE, I MUST HAVE ALL NEWS, FREE ADS, ARTICLES, PHOTOS, COMMENTS ETC. BY SATURDAY SEPTEMBER 28TH. PLEASE CO-OPERATE.

About a year ago, I was given a box of openers from my niece in Manitowoc, Wis. Amongst them was an unusual cap lifter with an Indian head and without any markings (see S1853 Indian head opener in the illustrations). It intrigued me in that I assumed it was an item put out by Oshkosh Brewing Co. Oshkosh, Wis. for their Chief Oshkosh beer since Manitowoc was close to Oshkosh. That was shot down when DON BULL advised me it was a SYROCO item and had nothing to do with a brewery. A SYROCO item? That set my inquisitive nature to delve deeper about it. I surmised that there must be a collector who specializes in them. Lo and behold, our member, HERB DANZIGER is this specialist. I imposed on him to brief me about it. He was very co-operative and sent quite a bit of data which I condensed to fit our newsletter.

#### THE SYRACUSE ORNAMENTAL COMPANY CORKSCREWS AND BOTTLE OPENERS CIRCA 1937-1947

The Syracuse Ornamental Company (Syroco) was founded in 1898 by Adolph Holstein. Until 1960, it was operated in a plant located in downtown Syracuse, New York. At that time it moved to new facilities in suburban Baldwinsville. For 92 years the company produced a line of decorative accessories for the home including wall, table and free-standing articles. As detailing was considered significant, a material was developed and patented which made possible a grained wood-like finish. It was a mixture of wood fiber and thermoset resin and was trademarked Syroco Wood. It was this material from which their well known openers and corkscrews were produced. This article sheds light on a number of them.

Before discussing the types produced, here briefly describes the process by which the figures were made for them as the material AND the process allowed the company to obtain the quality and detail desired. Once the design was established, the piece was hand carved from the type of wood the figure was to resemble. In the case of corkscrews, the wood is believed to be walnut. After the carving was completed, a lead mold was produced. The surface of it contained the grain of the original wood. The mixture was then placed in it and compression molded. After molding, the piece was sanded to remove the parting lines and either decorated in multi-colors or stained in a natural wood finish. The corkscrew or opener was added as a final step. Anyone examining a Syroco Wood figure will testify to the fine detail achieved.

During my visit to Syroco, I obtained copies of five catalogs. They are #3, #4 & #?-1942; #12 June 1947 & #13 1947. I am thankful to Anthony Brescia-Vice President of Product Development & Design and Herbert Weinman-Manager of Engineering, Tool & Product for the help given me.

Regarding the Syroco corkscrews, two theories shown in the illustrations seem to disprove. One is that the large Police Dog was sold with the Topper/Codger body. The other one is that the Topper/Codger was a caricature of Senator Volstead, the author of the Prohibition Amendment.

Editor's Note: As mentioned at the start of this article, it is a condensed version. His research was done in 1982 and additional data has since been uncovered. If any of YOU have additional information or want more information on Syroco, contact:

HERB DANZIGER 550 Cherry Ct. Birmingham, MI 48009

SYRACUSE ORNAMENTAL CO., SYRACUSE, N. Y.



\$1273/2  
BULLDOG  
CORK SCREW  
5 1/4" long



\$1273/3  
BULLDOG  
BOTTLE OPENER  
4 1/2" long



\$1274/2  
SCOTTY  
CORK SCREW  
5 1/4" long



\$1274/3  
SCOTTY  
BOTTLE OPENER  
4 1/2" long



\$1275/2  
TERRIER  
CORK SCREW  
5 1/4" long



\$1275/3  
TERRIER  
BOTTLE OPENER  
4 1/2" long



\$480/3  
POLICE DOG  
BOTTLE OPENER  
5" long



\$1127  
PICKWICK  
BOTTLE OPENER  
6" long



\$481/3  
LAUGHING  
BOTTLE OPENER  
5 1/2" long



\$1853 INDIAN HEAD  
BOTTLE OPENER  
6" Long



No. 15368X/1 Comb. Cork Screw & Bottle Opener \$4.00 doz.  
No. 15368/2 Cork Screw \$4.50 doz.  
No. 15368/3 Bottle Opener \$4.50 doz.  
Brown, Black, White



\$241/1 WAITER CORK & BOTTLE  
OPENER  
(with removable head)  
8" high



WOODEN INDIAN  
\$1690 9" high  
(With removable head)



\$483/1 CORK & BOTTLE OPENER  
8" long



\$242/1 CODGER CORK & BOTTLE  
OPENER  
(with removable head)  
8" high

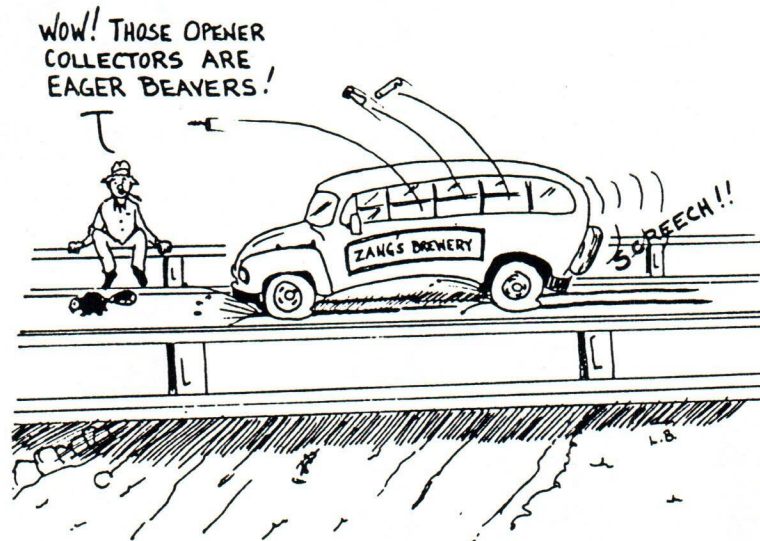


## 1985 CONVENTION — DENVER, COLORADO HIGHLIGHTS

GARY DEACHMAN & BILL MCKENZIE are to be complimented on a well run convention. The accommodations at the Executive Tower Inn pleased the attendees from Colorado, Missouri, New Hampshire, Illinois, Utah, Kansas & Michigan. They even arranged to have a snowfall for this Floridian.

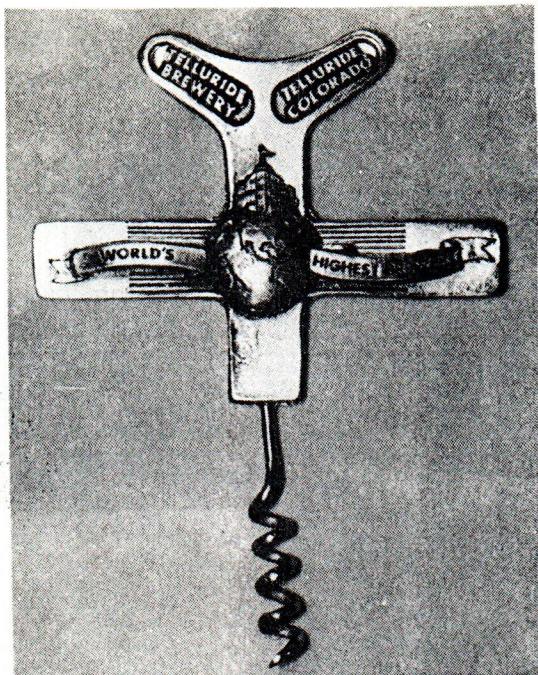
After a buffet breakfast on Friday morning, our caravan proceeded to Boulder, CO and toured the Boulder Brewery. This is a Micro brewery which was not fully "on line" but gave us an insight how a brewery comes to be. A dedicated crew of workers are making about 600 cases of Boulder beer a month using the old equipment where each bottle is filled & capped by hand. This will increase to about 11,000 cases a month-10 thousand barrels a year-once they perfect the mechanical system in their new brewhouse. (In comparison, Coors brews 13 million barrels a year).

An antique show was on in Golden, CO so the caravan took that in where some nice openers were found to add to our collections. Back to the hotel where an auction was held amongst us. Room to room trading followed. Saturday, our reserved tables were filled with openers that we missed in our room to room trading. Awards for the best of show displays were given to BILL MCKENZIE, BOB VAN VACTOR & ELDON GREGG. For those who opted to stay over Saturday evening, Zang Brewery restaurant bussed us from the hotel to it & back. (We on the bus remember this incident as sketched by LARRY BIEHL). All in all it was a fun gathering as the photos of the convention attest.



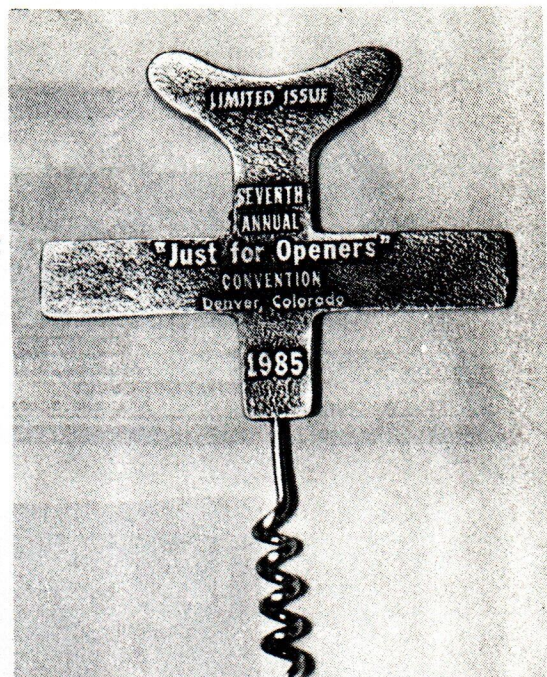
J.F.O. DENVER, Co. 1985

GARY & BILL had a corkscrew produced as a souvenir of the convention. The front & back of it were photographed by BILL. The leaflet that accompanied it is very informative & is reproduced for your benefit of past history. If you are interested in obtaining one of them, they each have about 10 of them available for sale at \$25 or an equal value trade. GARY also wrote that what appears to be a Tiger Eye earring was found in the hospitality room & if you are missing it, to contact him.



ACTUAL LENGTH  
(TOP OF HANDLE  
TO BOTTOM TIP)  
IS 5 INCHES.

X-2



This 1985 "Just for Openers" Convention corkscrew is the second of a series of openers commemorating United States breweries. The first opener, issued in 1984, commemorated the Consumers Brewing Co. of Denver, Colorado. Only fifty of those special openers were made. This year's issue also has been limited to 50 openers, 25 each in antique brass and antique pewter. We hope that this opener will be a cherished addition to your collection, whether you collect beer advertising openers, corkscrews, or just breweriana in general.

The Telluride Brewery of Telluride, Colorado was unique unto itself. First known as the City Brewery, it was established in 1881 by Hippler & Langendorf. During the subsequent years of operation it underwent several ownership and name changes until after prohibition it became known as the Telluride Brewery. Under this name it advertised itself as the "World's Highest Brewery", a claim which no other brewery could make.

Although the building which housed the brewery is still in existence, it is disintegrating rapidly. In the picture on the right, taken June 10, 1982, you can see the beauty of this historic landmark of a bygone era. In the background to the right are the San Juan Mountains.

Besides the building itself few mementos of the brewery remain: the label pictured, from which the corkscrew was designed; several different pre-prohibition and prohibition labels bearing the City Brewery name, and; a few bottles dating 1903-1915, when the brewery was owned by Wichmann & Lagershausen. Presently nothing else has been reported to exist.

Time is slowly changing the mining town of Telluride, but much of the past still remains. Located in the southwest corner of the state, 335 miles from Denver, it is best remembered as the town where on June 24, 1889 Butch Cassidy and the Sundance Kid robbed their first bank. In breweriana history it will be remembered as the town which once had the "World's Highest Brewery", elevation 8,745 feet.

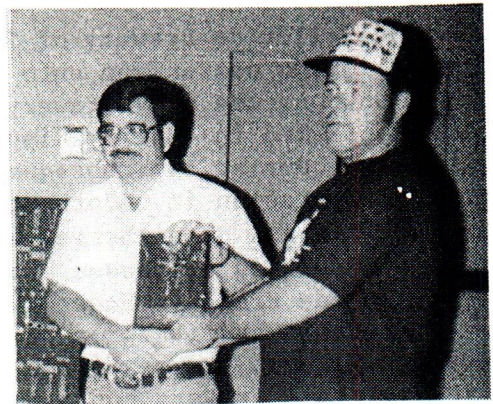
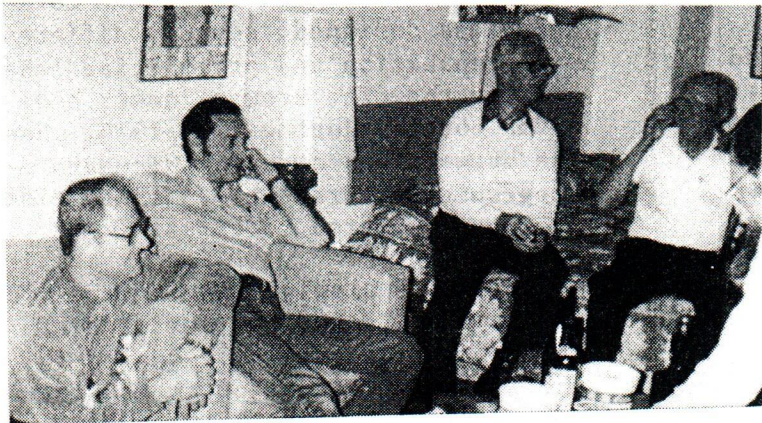
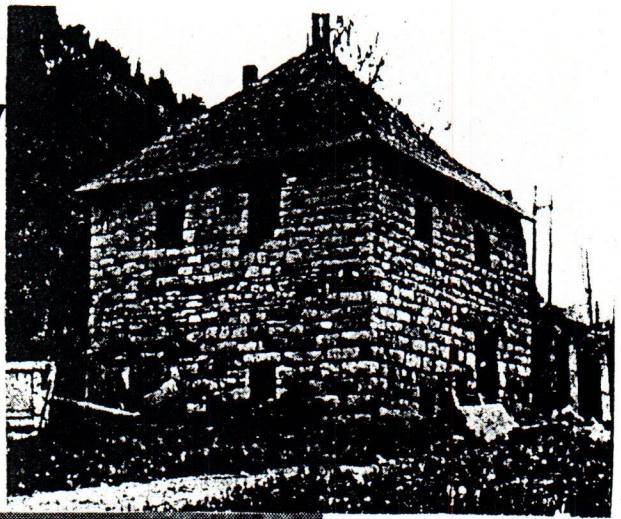
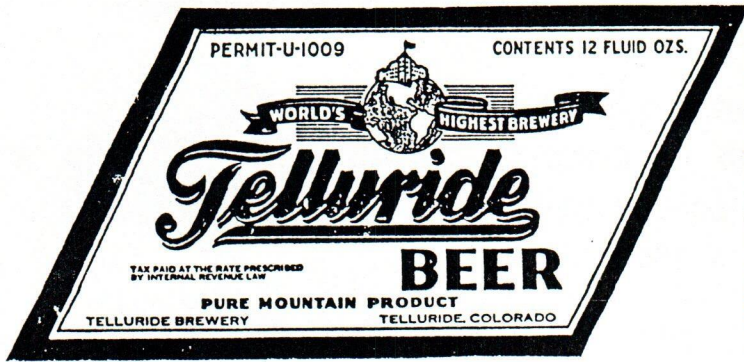
1985 JFO Convention Sponsors,

*Gary Deachman*

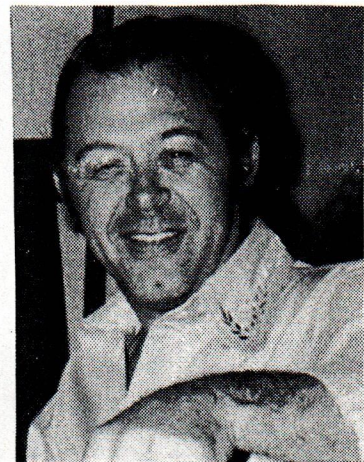
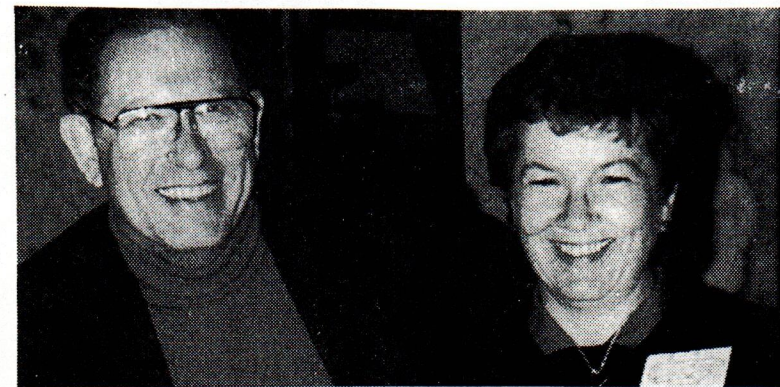
Gary Deachman

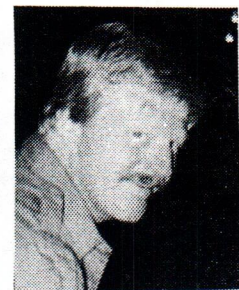
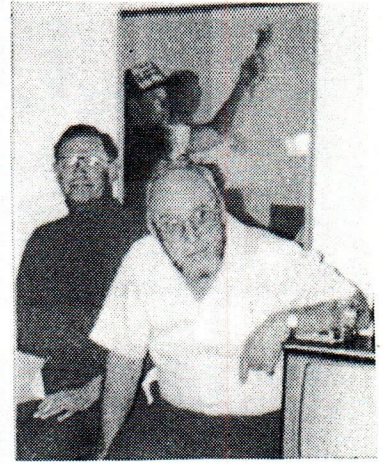
*Bill Mc Kienzie*

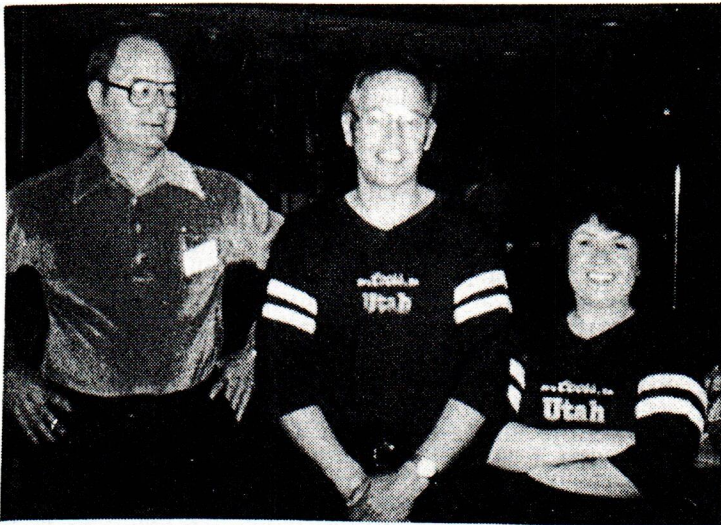
Bill Mc Kienzie











My sincere thanks to GARY DEACHMAN,  
LEHR ROE & HERB DANZIGER for the use  
of their photos of the convention.



## COLLECTOR OF THE ISSUE

62-year old Ed Kaye of  
Sanibel, Florida

By Mili Backus

### EDWARD R. KAYE

#### *An Unusual Man—An Unusual Hobby*

ED KAYE has come a long way from the Chicago orphanage where he grew up. He was a bright, ambitious lad who, by the time he was sixteen, knew exactly where he was going and had the grit and determination to make it on his own, which he proceeded to do in record time.

A self-taught electro-mechanical engineer, Ed Kaye's first full-time position was with Bodine Electric Co. It turned into a close association, lasting forty-two years. It was first interrupted by WWII with the Air Force in England, and the last seventeen in Golden Valley, Mn., as a manufacturer's rep., calling on customers in Minnesota and western Wisconsin.

Anything Kaye tackles is accomplished speedily and extremely well. An intense man, Ed has always had a hobby. For years, he was interested in model planes and enjoyed lapidary work. He collected rocks and semiprecious stones and assembled all the necessary equipment to polish and turn them into beautiful pieces. However, he reached that point of "where do I go from here?", when his lovely wife, Eileen, suggested he find a new hobby. When Ed asked, "What should it be—beer can openers?", understanding Eileen answered, "Why not?" And so began a new, engrossing hobby.

The year was 1975, when Ed started to research bottle and can openers (church keys), which is a second cousin to breweriana (the collecting of anything related to beer brewing). Kaye was fascinated by the sheer numbers of different kinds of church keys and the history surrounding them.

Kaye is full of stories about how they evolved. For instance, the earliest openers were actually corkscrews for beer bottles with corks. In the late 1800s, when the crown-type lid was invented, bottle openers became available. After prohibition (in the '30s), the beer can was introduced, bringing into being the can piercer. Kaye estimates, a million were given out at the 1932 World's Fair. He also guesses that in the early 1960s, 200 million can piercers were produced annually. In 1963, it all changed with the advent of the pull-tab can.

Kaye's collection of piercers includes openers with ads for Budweiser, Ballantine, Pabst, Dobler, Coors, Stag, Weideman, Edelweiss and "Friendly" Grain Belt Beer—of every conceivable style and historical period, including a few bottle openers with square holes, used to open carbide tanks for automobile headlights in the early 1900s. He also has a couple he can't discover how they were used.

In addition to the piercers are openers or top lifters. There's the hoop-type (wire) and the wall-type opener that used to be found near Coke machines. There's a spinner-type that resembles a hand with a pointing finger with a raised dot on its side. It was often placed dot side down on a table or counter and spun. Whomever the finger pointed to when the spinning stopped was expected to buy the next round.

One of the rarer specimens is the Rheingold Brewery's combination opener and can handle (Kaye has one of the first of these) that was outlawed in 1960 by the New York Police, which considered it a deadly weapon and ordered a half-million openers dumped into the foundation of a brewery under construction.

A favorite anecdote of Kaye's revolves around The Olympia Brewing Co. Remember, at the turn of the century, a beer drinker's opener was a vital tool. Olympia served as a clearinghouse for lost keys between 1906 and 1912. Each Olympia church key owner was registered with the Brewery and an inscription on the opener requested that lost keys be returned to the brewery so they could be returned to their rightful owners.

Here's one that Kaye bets most readers are not familiar with—the "Beer Nail." It is described by Helle's of Livermore, California, as "the world's most unusual bottle opener." It is an enormous spike, which not only removes bottle caps like gangbusters, but is also a conversation piece. The Beer Nail is made of a quarter-pound of solid steel and is lustrously electroplated with a tough finish for durability.

Kaye's collection of over 2400 openers is impressive, but co-collectors Ray Brauner and Donald Bull have around 3400 and 4000, respectively. At the 5th annual openers convention in 1983, in Indianapolis, Kaye was awarded the 2nd Annual Phil Fouch award for achievement in Opener Collecting.

1985 marks the 50th Anniversary of beer in cans. The first brewery to use keglined cans was a small one—Gottfried Krueger's, Newark, New Jersey. Those first cans were filled with either Krueger Beer or Krueger Cream Ale and shipped to the Richmond, VA area. They were an immediate success. Within two months, the Brewery couldn't satisfy the public's demand for canned beer.

As Kaye delved deeper and deeper into bottle/can openers, often trading with other collectors all over the country, he became aware of the need to bring collectors together. In 1981, "The Breweriana Openers Collector's Club" (BOCC) was organized, dedicated to "the preservation and dissemination of information about beer bottle/can openers." It has grown bigger and better every year.

Presently, Ed Kaye is editor and publisher of *Just for Openers*, a newsletter for beer bottle opener collectors that has a circulation of 165. He is also co-author, with Donald Bull, of *The Handbook of Beer Advertising Openers and Corkscrews (an alphabetical composite)*, published in October, 1984. The volume contains over 500 illustrations and 9,000 listings, plus provisions for notes, in a convenient 5½ x 8½ format. It is a reference book that no opener/corkscrew collector can resist owning. To prove this point, 110 handbooks have been sold in the first three months.

This article first appeared in the "Sanibel Captiva Shoppers Guide" March 21, 1985 and in the May-June issue of "The American Breweriana Journal" as a reprint.