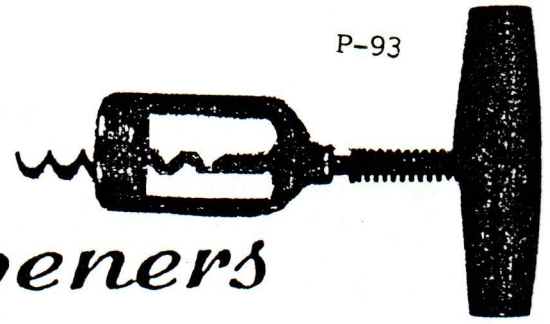


Just For Openers



6126 McPHERSON, ST. LOUIS, MO 63112

(314) 863-6798

JAN 1990
ISSUE #45

TESTIMONIAL TO ED KAYE

Enclosed is a list of testimonials to Ed from many of his friends in the JFO. Ed celebrated his 67th birthday on November 16, 1989, and this is a belated present to him from all of us.

This is my second year of publishing the JFO. Last year we reached a membership of 206. About 1/4 of the members did not renew their membership until after Jan. 1 last year.

This year it was worse, 1/2 missed the deadline. This year I will follow the same format: Jan - Additions; April - Roster (Don Bull wanted the membership roster in the Jan. JFO, but since half the members did not renew by the deadline, this is impossible.); July - Convention Coverage; Oct - N. D.

Again, all N.D. should be sent to me by Sept. 1, to be included in the Oct. JFO. All additions should be sent to Ed Kay by Nov. 15, for enclosure in the Jan. JFO.

All pictures sent to me should include the negatives so that I can have them developed to my requirements.

All N.D. should be xeroxed in order to have the exact dimensions for reproduction (all dimensions should be included).

CONVENTION

The Convention Reservation Form is enclosed on a separate sheet so that members will not ruin their JFO when sending it in.

IN MEMORY OF PHYLLIS CREUZIGER

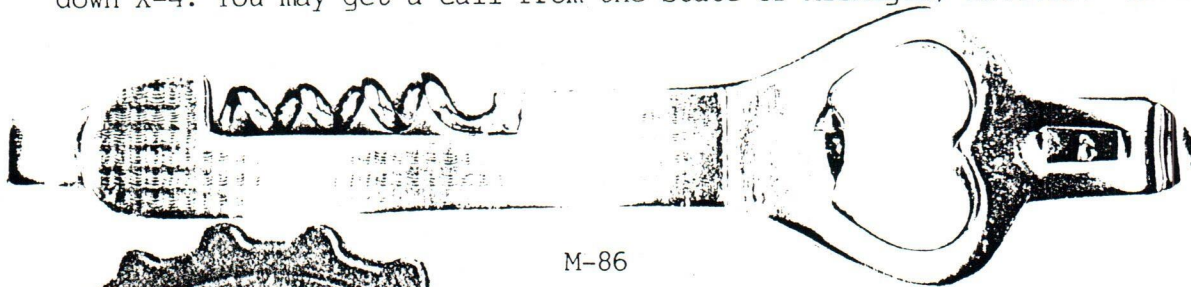
We wish to offer our condolences to Richard Creuziger on the recent death of his wife Phyllis. She has been a member since 1987, and they have attended several conventions. We will miss her, remembering the enjoyable times we had together at past conventions. Dick has renewed the membership in his name and we hope to see him at future conventions.

On Nov. 24, the St. Louis Chapter of the JFO met at the Kwan Yin restaurant in Wentzville, Mo. Vic & Mary Ann Keown, who arranged the party, Lou & Rosemary Kovarik, Conrad & Kay Schmitt, and Art & Dorothy Santen welcomed Ollie & Shirley Hibbeler who were in from the Lake of The Ozarks for the weekend. Art Santen provided the centerpiece for the dinner (an oversized corkscrew). We later adjourned to the home of the Schmitts in O'Fallon for an after dinner social. We saw Smitty's collection of assorted and figural openers. Vic brought his picture album of past conventions. Everybody had a great time and sends Seasons Greetings to all of our fellow members.

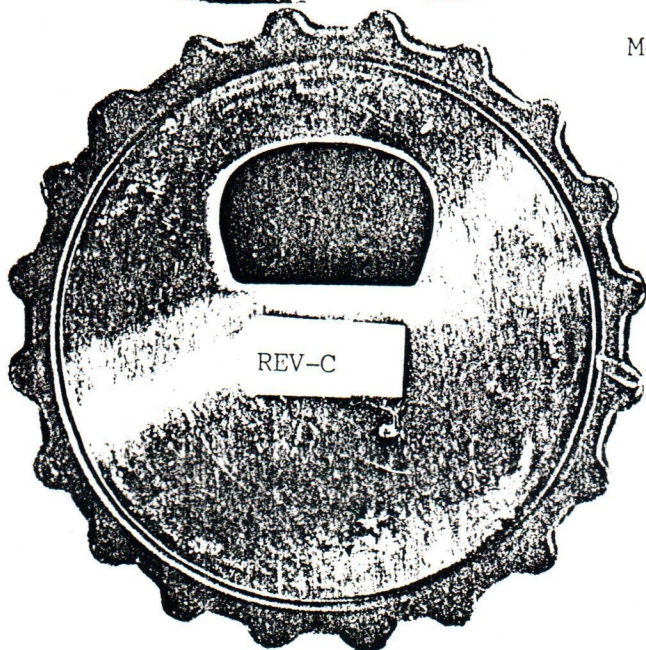
This month Joe Cardone asked me to include his Bid Sheet. Check it out, you may find something that you want.

NEW DISCOVERY UPDATE

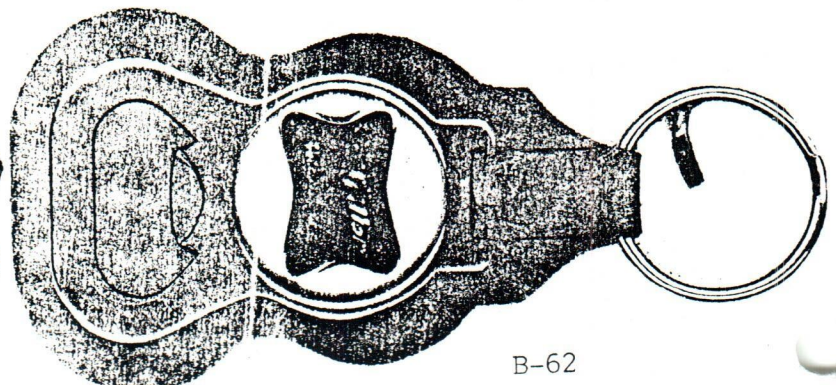
- B-62 Another version of the B-62 type is shown below.
- B-65 No Square Hole. Silver foam lager made by Sudbury Brewing Co. Ont. Canada. Ed Kaye.
- B-66 Was sent in by Ray Brunner.
- B-67 It is a different opener than the B-7. I have researched thousands of manufacturers changing, or adding, tools to a single patent qualification. Bill Ennis.
- K-12 My mistake, this type was already listed in JFO 14 as a K-9-1.
Please delete this as a N.D.
- M-86 There are two types of openers discovered in the Falstaff Leather Holder Pic in JFO 44. John Horn. Pic below. Bob Van Vactor and Art Santen.
- M-87 The size is 9 9/16 ".
- M-88 The size is 6 13/16 ".
- P-91 My mistake, the P-91 is not a corkscrew. Change type to N-66.
The difference between the N-66 (changed from P-91) and the N-36 is:
N-36 [Plastic in the handle][Made by Colonial Pat.No. 2,300,541 USA][No hanger wire on end].
N-66 [Wood in the handle][C.I.High Stainless 533 Japan][Hanger wire on end].
- P-94 The P-1 is a Double Helix Screw. The P-94 is a Single Helix Screw. They were both made on a machine patented by W.R. Clough in 1875 and 1876. The short second screw acts to start the cork in the bottle to turn, thus breaking loose any adhesion. The single screw is fairly common without advertising. The P-1 is scarce with or without advertising. Bill Ennis.
- Q-13 My mistake. This type was already listed in JFO 30, as a Q-11.
Please delete this as a N.D.
My confusion was the different type of cap lifter on the reverse side. As seen in JFO 44 pg. 15, two types are pictured: Rev-A, Rev-B. Pictured below is Rev-C. This is done for the benefit of those of us who want to list all the details of an opener.
- Q-24 Although the Q-24 and the X-3 seem to be alike, there is a small difference, and the convention opener deserves a separate listing.
- X-4 No you are not seeing wrong. It is upside down! "I forgive you for the upside down X-4. You may get a call from the State of Michigan, however." Herb Danziger.



M-86



REV-C



B-62

- (A-1/B-18)
74. EXCELSIOR BEER REFRESHING AS THE CLEAN BREEZE
A-1
32. THE STONE MALT CO. SOLE DISTRIBUTORS HOME RULE MALT SYRUP (SEE #s12, 13 & 19)
A-3
59. BLUE ANCHOR PALE DRY (SEE E-14-214)
A-5
35. MFRD. BY CENTLIVRE BREW. CO. THE ARCADE POOL & CIGAR STAND FLOYD SPECHT,
PROP. "THATS IT"
A-9
36. "UNION BEVERAGE CO., NEW ORLEANS BINGO" (LOUISIANA UNION BRG. CO.?)
A-15
47. COOK'S EVANSVILLE, IND. / GOLDBLUME (NOT #18)
A-17
34. DRINK TIETJENS BEER
A-18
23. FISHER BEER (SAME AS #20 BUT WITH PREST-O-LITE KEY)
A-20
43. SUNSET BEER ALWAYS WINS
A-21
75. ENGESSER! YES SIR! EXPORT BEER AS YOU LIKE IT PHONE NESTOR 1362
76. ENGESSER! YES SIR! EXPORT BEER AS YOU LIKE IT PHONE WHITE BEAR 45
77. DRINK OTTO'S LAGER BEER IT'S VITAMIZED GENERAL DISTRIBUTORS, INC.
2364 HAMPDEN AVE. NESTOR 1250 ST. PAUL, MINN.
78. "ROLLING ROCK" BEER SOFT DRINKS ZIEGLER DISTR. 2113 FAIRVIEW PHONE 3-4209
79. "SCHLITZ THE BEST BEERS ALES AND WINES R.C. WILLIAMS & CO. 265-10TH AVE. N.Y.C.
A-28
34. SCHMIDT BOTTLING CO. HANOVER, PA. (SEE B-21-136)
A-29
65. WIDMAN'S BETHLEHEM, PA.
A-30
13. FINK BREWING CO HARRISBURG, U.S.A. / C.T. & CO. CHICAGO
A-35
32. BUDWEISER BAR PEHL & KUECK SEDALIA, MO
33. ASK FOR FINK'S HARRISBURG BEER
34. KEY TO MOERSCHER'S SPECIAL BEER SEDALIA, MO.
A-38
7. INDEPENDENT BREWING CO. SPECIAL PALE EXPORT BREW
A-39
2. HAMM'S BEER STEELE DISTR. CO.
A-43
4. LEXINGTON BRG. CO'S DIXIE BEER (NOT #1)
B-2
39. THE R.I.B. CO. CROSS COUNTRY FOR THE FAMILY
B-3
6. "THAT GOOD" AURORA BEER
B-5
28. "STORZ BR'G CO. OMAHA, NEB. STORZ THE DELICIOUS ARTESIAN BREW"
B-9
8. AUGUSTA BREWING CO. AUGUSTA, GA. / DRINK BELLE OF GEORGIA-THE HOME BEER-NONE BETTER
B-13
85. PABST BLUE RIBBON BEER GROVER G. JONES & SON HANNIBAL-QUINCY-MACOMB / WINES-
LIQUORS-CORDIALS
B-14
160. GIPPS BREWING CO. PEORIA GIPPS
B-15
16. "DRINK A-R-R-O-W IT HITS THE SPOT"
17. SCHRIER'S (SHEBOYGAN, WI BRWY)
B-18
463. KEY TO CELILO BEER
464. DRINK HORLACHER PERFECTION 9 MONTH OLD

(B-18/B-65)

B-18

- 465. KEY TO LAKESIDE BREWING CO'S BEERS ORTONVILLE, MINN.
- 466. FOR SCHLITZ'S BEER MCHUGH & MORAN AGENTS HAZELTON, PENNA.
- 467. KEY TO STROUDSBERG "OLD STOCK" BEER

B-19

- 196. THE KITTANNING BRG CO. KITTANNING PA
- 197. DRINK MOHAWK BEER
- 198. KEY TO WEST BEND BREWING CO'S LITHIA BEER

B-21

- 452. INDIAN BREWING CO. INDIANA, PA.
- 453. SAN ANTONIO BR'G ASS'N TEXAS PRIDE / A KEY TO THE CITY

B-22

- 98. BUNKER HILL BREWERIES BOSTON, MASS. P.B. THAT GOOD LAGER
- 99. DRINK FITGER'S (STAR)
- 100. CALL FOR SEHRING'S STANDARD PALE

B-23

- 141. LANG'S GINGER ALE ARABIA DRY (LANG BRWY. BUFFALO, NY)

B-45

- 2. DRINK LEMP'S ST. LOUIS BEER / H. REILEY DIST. SALT LAKE CITY

B-55

- 15. CARLING BLACK LABEL CANADIAN STYLE BEER CARLING FOUNDED IN 1840 CANADA
- 16. COLT 45 MALT LIQUOR (GOLD HORSESHOE RED HORSE)
- 17. HEILEMAN'S PURE GENUINE OLD STYLE (LABEL)
- 18. OLD MILWAUKEE BEER

B-57

- 7. BUD LIGHT (NOT #2)
- 8. BUSCH (WITH MOUNTAINS)
- 9. BUSCH BAVARIAN BEER (EAGLE IN A)
- 10. HEILEMAN'S PURE GENUINE OLD STYLE (LABEL)
- 11. LITE (LOGO)
- 12. LOWENBRAU (LION IN BLUE) (BY MILLER BRWG. CO.)
- 13. MILLER LITE (LABEL)
- 14. NATIONAL PREMIUM BEER
- 15. PABST NATURALLY BREWED EXTRA LIGHT BEER (LABEL)
- 16. PIELS BEER (CROWN) LIGHT LAGER
- 17. SCHAEFER (LABEL)
- 18. STROH'S BEER (LABEL)

B-58

- 16. ANHEUSER-BUSCH BUD LIGHT SPUDS MACKENZIE
- 17. BUSCH BEER (WITH MOUNTAINS)
- 18. CARLING BLACK LABEL CANADIAN STYLE BEER CARLING FOUNDED IN 1840 CANADA
- 19. COLT 45 MALT LIQUOR (GOLD HORSESHOE RED HORSE)
- 20. HEILEMAN'S PURE GENUINE OLD STYLE (LABEL)

B-60

- 4. FEIGENSPAN PRIVATE SEAL BEER

B-62

- 1. COORS
- 2. MILLER
- 3. OLYMPIA (HORSESHOE LOGO)
- 4. STROHS

B-63

- 1. BUFFALO BREWING COMPANY
- 2a. FAUERBACH MADISON, WIS. / DRINK F.B.C. LAGER (BRASS)
- 2b. FAUERBACH MADISON, WIS. / DRINK F.B.C. LAGER (STEEL)

B-64

- 1. THE GENESEE BREWING CO. INC. ROCHESTER, N.Y. LIEBOTSCHANER BEER
- 2. JUNG BEER
- 3. THE WEHLE BREWING COMPANY QUALITY BEER AND ALE WEST HAVEN, CONN.

B-65

- 1. S & S MALT BEVERAGE SUPPLY COMPANY 2416 NORTH AVE. MILWAUKEE
- 2. DRINK SILVER FOAM BEVERAGES (BATTLE CREEK, MI BREWERY)

- (B-66/G-27)
1. DUBUQUE BREWING & MALTING CO. DUBUQUE, IOWA / VIMALT THE HEALTH TONIC
B-66
1. KEY TO JETTER'S GOLD TOP BOTTLE BEER
B-67
161. DELATRON THE FINER BEER CINCINNATI
C-12
1. LUCKY LAGER PREMIUM BEER
C-40
51. KOPPITZ PALE SELECT BEER / SAME
E-1
28. BUNKER HILL BREWERIES P.B. LAGER / BUNKER HILL BREWERIES P.B. THAT GOOD ALE
E-2
306. BRADFORD BEER / "OLD 76"
E-4
83. HAMM'S BEER ON TAP (MAN IN STRAW HAT) "I'M ON MY WAY TO" RAINBOW ROOM JUNIOR
FAIRCHILD, PROP. MILBANK, S.DAK.
E-5
84. HIGHLANDER...BUDWEISER CARDINAL DISTRIBUTING CO. LIVINGSTON, MONTANA PHONE 132
E-8
90. SALT LAKE CITY BREWING CO. / AMERICAN BEAUTY BEER (SEE #42)
E-9
113. FREMONT BOTTLING WORKS / FREMONT, NEBRASKA (FREEMONT BRG. CO.)
E-14
734. ATLAS PRAGER BEER GOT IT-GET IT / SAME (SEE #719)
735. BANNER BEER BALANCED BLEND / SAME
736. SPECIAL GERMAN BEER UNIONTOWN, PA
737. QUEEN CITY BRG. CO. CUMBERLAND MARYLAND / THE ORIGINAL QUEEN CITY BEER (NOT #226)
738. TROMMER'S BEER IT'S ALL MALT & HOPS / TROMMER'S BEER TASTE AND COMPARE (SEE #286)
E-16
8. THE DEPPEN BREWING CO. READING, PA.
E-22
4. SALANO BREWING CO VALLEJO
E-27
3. BAVARIAN MALT / COLUMBIA MALT
4. FALSTAFF / THE CHOICEST PRODUCT OF THE BREWERS' ART
5. M.K. GOETZ BREWING CO. / COUNTRY CLUB SPECIAL
E-28
4. PABST BEER AGENTS HUND & EGER BOTTLING CO. / PURE SODA WATERS IN STERILIZED
BOTTLES
F-2
43. GRAIN BELT BEER DISTRIBUTOR / HANSON BEVERAGE CO. FARMINGTON
F-3
12. STAG BEER DISTRIBUTOR A STIRRING REMINDER FROM ROBERT FISCHER & SON
13. STAG PABST DISTRIBUTORS CARLYLE BOTTLING WORKS DIAL 3323 CARLYLE, ILL.
F-4
34. HAMM'S BEER HARRY YOUNG DISTRIBUTOR
F-5
25. BETHLEHEM MALT & HOP CO. 515 E. 3rd ST. BETHLEHEM, PA. / OVER-ALL MALT SYRUP PHONE 3917
F-6
67. FRANKFORD MALT CO. 4349 FRANKFORD AVE. PHILA., PA. / PHONE DELAWARE 1729
FOR BEST RESULTS USE FRANKFORD MALT
68. MALTOSIA / SAME (SEE #26)
F-27
3. OLD HEIDELBERG BEER / WATERLOO ICE CO. (IS NOT F-18-5)
G-5
31. BUCK FIRST FOR THIRST
G-26
1. BUDWEISER
G-27
1. BUD LIGHT (ON NECK LABEL) BUD LIGHT (LABEL) / EVERYTHING ELSE IS JUST A LIGHT
2. BUDWEISER (LABEL) BUD KING OF BEERS (ON NECK LABEL) / THIS BUD'S FOR YOU

1. ANHEUSER
 2. PABST BLUE RIBBON MILLER HIGH LIFE
 3. PITTSBURGH BREWING COMPANY
 4. YUENGLING-POTTSVILLE, PA. AMERICA'S OLDEST BREWERY (WHITE ON RED-RED ON SILVER)
- G-29
1. COORS
- H-1
35. JONES BREWING CO. SMITHON, PA. STONEY'S GOLD CROWN BEER
- H-2
157. BURKHARDT'S
- H-6
14. PABST BREWING COMPANY-MILWAUKEE, PEORIA HEIGHTS, NEWARK, LOS ANGELES ORIGINAL PABST BLUE RIBBON / ORIGINAL PABST BLUE RIBBON BEER (SEE #4)
- I-6
94. VALLEY FORGE BEER
- I-9
3. VALLEY FORGE / ALE & BEER
- I-11
364. THE GLOBE BREWING CO. BALTIMORE 1, MD. / ARROW 77 IT HITS THE SPOT
- I-13
122. BILIKIN BEER
 123. CASTLE LAGER
- I-17
282. PETER HANDS RESERVE BEER / SAME
 283. MILLER HIGH LIFE BEER (RO-LOC PROCESS)
- I-22
28. "DIXIE 45 (45 IN CIRCLE) BEER" (SEE #21)
- I-28
1. BUDWEISER KING OF BEERS / SAME
- K-6
2. FALSTAFF (SHIELD LOGO) PREMIUM QUALITY BEER
- K-12
1. BLATZ MILWAUKEE BEER NOV. 17, 1949 SCHENLEY INDUSTRIES, INC.(DELETE SEE K-9-1 JFO-14)
- L-4
58. CANADAIGUA PREMIUM LAGER BEER
 59. FOX HEAD "400" BEER BREWED WITH WAUKESHA WATER (NECK LABEL HAS: FOX HEAD "400" 4 TIMES AND FOX HEAD ONCE. ALSO, A PIC OF A FOX HEAD)
 60. JOS. SCHLITZ BREWING CO. MILWAUKEE, WIS. U.S.A. "EXPORT" (OVER GLOBE WITH "PURE" ON FLAG AT EACH SIDE) THE BREWERY'S OWN BOTTLING SCHLITZ THE BEER THAT MADE MILWAUKEE FAMOUS (ON NECK LABEL: 1939 NEW YORK WORLD'S FAIR WITH GLOBE AT EACH END)
- L-6
2. BUFFALO CO-OPERATIVE BREWING CO. SPECIAL BREW EXTRA 6 (NOT L-2)
- L-9
1. BUD KING OF BEERS(NECK LABEL) BUDWEISER KING OF BEERS(LABEL)
 2. BUD LIGHT(NECK LABEL) BUD LIGHT BEER(LABEL)
 3. BUSCH(NECK LABEL) BUSCH(PIC OF MOUNTAINS)
- M-9
3. STAG BLACK LABEL RED CAP ALE MILLER'S HIGH LIFE / BRADLEY'S PACKAGE STORE BERKELEY SHOPPING CENTER 9351 NATURAL BRIDGE
- M-23
10. BLACK LABEL BEER / SAME (SEE #6)
- M-30
37. BUDWEISER MICHELOB BUSCH (EAGLE IN A) MARQUART DIST. CO., INC. PHONE BE9-3115 WASHINGTON, MISSOURI 63090
 38. BUDWEISER ON TAP / DEBS TAVERN WAYNE & MARY HAMBURG, IOWA
 39. 1ST ANNUAL OPENER CONVENTION APRIL 29, 1979 ST.ROCH'S CHURCH HALL ART SANTEN SPONSOR COMPLIMENTS OF JOSEPH LIPIC PEN CO. ST.LOUIS,MO. THE OLDEST PEN COMPANY IN THE WORLD FOUNDED IN 1863

- (M-30/P-18)
40. DISTRIBUTOR OF STAG BEER KOLA-BRU MEL J. NEWMAN & SON BOTG. WKS. NEW ATHENS, ILL.
OUR 25TH. YEAR 1938 - 1958 M-30
6. NEW FORT PITT SPECIAL BEER / SAME M-33
20. BUDWEISER KING OF BEERS (LARGE LABEL) M-43
21. BUDWEISER LAGER BEER (SMALL LABEL)
22. MICHELOB (LABEL)
23. MICHELOB DRY
6. MICHELOB DRY BEER M-82
1. NEUWEILER'S ALE AND BEER M-84
1. (EAGLE IN A EMBLEM) M-85
1. FALSTAFF (SHIELD LOGO) 1964 FALSTAFF NBWA PARTY "THE WORLD'S FAIR CITY"
NEW YORK (PIC OF WORLD) (COMES IN POUCH WITH FALSTAFF SHIELD LOGO ON IT) M-86
1. (BALLANTINE) 3 RING LOGO M-87
1. BLATZ (IN TRIANGLE LOGO) M-88
1. HANDY BOTTLE OPENER FOR BUDWEISER M-89
1. OLDENBERG BREWERY AND ENTERTAINMENT COMPLEX FT MITCHELL KENTUCKY (PIC OF BREWERY) /
SAME M-90
10. RENNER'S YOUNGSTOWN LAGER BEER PHONE 44467 N-11
N-24
7. PILSNER N-40
21. BLITZ WEINHARD BEER
22. G.HEILEMAN BREWING COMPANY, INC. LA CROSSE, WIS. / HEILEMAN'S SPECIAL EXPORT BEER
23. G.HEILEMAN BREWING COMPANY, INC. LA CROSSE, WIS. / SCHMIDT BEER N-56
5. HAMM'S BEER SEASONS GREETINGS HARRY FRAHM N-64
1. HORLACHER BEER N-65
1. BUDWEISER
2. LITE A FINE PILSNER BEER (LOGO)
3. MICHELOB (EAGLE IN A)
4. MILLER N-66
1. NATURAL O-4
25. F & S PILSENER BEER
26. K.G. SCHMIDT'S BEER LOGANSPORT, INDIANA P-8
156. COLUMBIA BREWING CO. ST. LOUIS, MO. / COLUMBIA PALE AND CARLSBERGER
157. MORAND BROS. (1 LINE WORN OFF) 331-335 SO. MAY ST. CHICAGO / (2 LINES WORN OFF)
PILSENER EXPORT KAISER PALE LAGER BEER P-14
14. GRAIN BELT BEER HANSON BEVERAGE CO. FARMINGTON, MINN.
15. GRAIN BELT'S HEAVY HITTERS P-16
5. FRIENDLY GRAIN BELT
6. WALTERS QUALITY BEER AND ALE P-18
5. COMPLIMENTS OF THE FOREST CITY BREWING CO. CLEVELAND, OHIO

(P-19/Q-17)

P-19

- 32. ANHEUSER-BUSCH BREW. ASSN. J.E. WALTERSCHEID BOONVILLE MO WHOLESALE DEALER
- 33. ANHEUSER-BUSCH BRG. CO. ENID MERCANTILE CO. WHOLESALE AGENTS - ENID, - O.T.
- 34. PABST MILWAUKEE BEER FROHLICH GAROF & CO. GALESBURG, ILLS. WHOLESALE LIQUOR DEALERS
- 35. SCHILLER BROS. KANSAS CITY..MO. SCHILLER'S PILSNER BEER CASK 72 QTS. OR
120 PTS..\$7.20 "SUNNY TIMES WHISKY FOUR FULL QUARTS \$2.95 EXPRESS PAID

P-21

- 3. GRIESEDIECK BROS. BREWERY CO. / 10TH OPENER CONV. APRIL 23, 88 ST.LOUIS MO
VIC KEOWN SPONSOR

P-43

- 7. MOERLEINS CINCINNATI BEER / SAME

P-51

- 36. TEXAS BREWING CO. FORT WORTH, TEXAS / SAME

P-54

(P-54/Q-24)

- 12. MONTREAL BRAND MALT RYE N.M. URI & CO. LOUISVILLE, KY.

- 13. SCHILLERS PILSENER BEER 36 PINTS \$3.00

P-60

- 3. COMPLIMENTS OF THEO. HAMM BREWING CO. ST.PAUL, MINN.

P-61

- 3. COORS GOLDEN / SAME (SEE #1)

P-90

- 1. NORTHERN BREWING CO. WEST SUPERIOR, WIS. / SAME

P-92

- 1. OLDENBERG BREWERY

P-93

- 1. THE HOME BREWING CO., INDIANAPOLIS, INDIANA / SAME

P-94

- 1. BROADWAY PRODUCTS CORP. / MFGRS. OF LIQUID MALT

Q-8

- 26. HEILEMAN'S PURE GENUINE OLD STYLE (LABEL)

- 27. LONE STAR BEER

- 28. LONE STAR LIGHT BEER

Q-10

- 17. BUSCH HEAD FOR THE MOUNTAINS

- 18. SCHMIDT BEER (LABEL) CONCORD BEVERAGE

Q-11

- 6. BUDWEISER (IN BOW TIE) THIS BUD'S FOR YOU (RED ON WHITE)

- 7. BUSCH BEER (MOUNTAIN LOGO) (BLUE & GOLD ON WHITE)

- 8. MICHELOB BEER (BLACK & RED ON WHITE)

- 9. OLDENBERG PREMIUM VERUM FT MITCHELL KENTUCKY

- 10. SCHLITZ

Q-12

- 9. BUD LIGHT SPUDS MACKENZIE (PAW PRINT) (PIC OF PUPS WITH PARTY HATS) (WHITE ON BLUE)

- 10. BUDWEISER U OF B (WHITE ON RED)

- 11. LOOKIN' FOR A BUSCH BEER (BLUE & RED ON WHITE)

- 12. COORS LIGHT THE SILVER BULLET (RED & BLACK ON SILVER)

- 13. COORS ORIGINAL DRAFT (WHITE ON RED)

- 14. LITE BEER LITE BEER (BLUE ON WHITE)

- 15. MICHELOB DRY

- 16. MILLER HIGH LIFE MILLER HIGH LIFE (WHITE ON RED)

- 17. NUDE BEER (GOLD & WHITE ON BLACK)

Q-14

- 1. BUDWEISER KING OF BEERS (TOP PUPPER (ON SIDE)

Q-15

- 1. BUSCH (TWIST OFF OPENER)

Q-16

- 1. BUSCH *HOME* OPENER (FOOTBALL IN FLIGHT)

Q-17

- 1. MILLER GENUINE DRAFT / (TAB LIFTER) (TWIST OFF OPENER)

- 1. BUDWEISER KING OF BEERS
- 2. BUSCH
- 3. LITE (ON HAND) (BLACK ON YELLOW) (WITH KEY RING)
- 4. OLD STYLE BEER (WHITE ON BLUE)

Q-19

- 1. MICHELOB
- 2. SCHMIDT BEER

Q-20

- 1. BUDWEISER

Q-21

- 1. COORS

Q-22

- 1. BUDWEISER KING OF BEERS

Q-23

- 1. SCHMIDT BEER THE BREW THAT GREW WITH THE GREAT NORTHWEST

Q-24

- 1. GRIESE DIECK BROS. NATURALLY SMOOTHER CAN (TAB LIFTER) / (TWIST OFF)

Q-25

- 1. BUDWEISER

Q-26

- 1. STROH'S

S-2

- 1. PABST BLUE RIBBON BEER

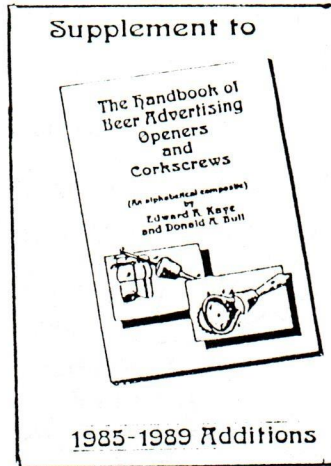
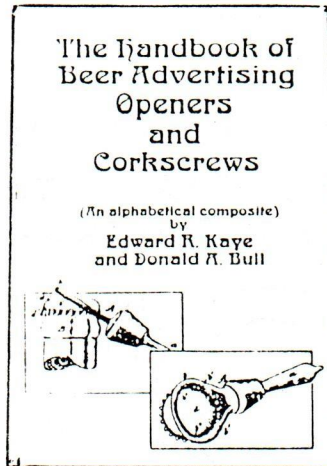
X-3

- 1. PETER HAND BREWING CO. CHICAGO, ILL. MEISTER BRAU J.F.O. CONV. ALSIP, IL. 4/25/87

X-4

- 1. JUST FOR OPENERS 11TH ANNUAL CONVENTION FRANKENMUTH, MI APRIL 1989 (JFO PIN LOGO)

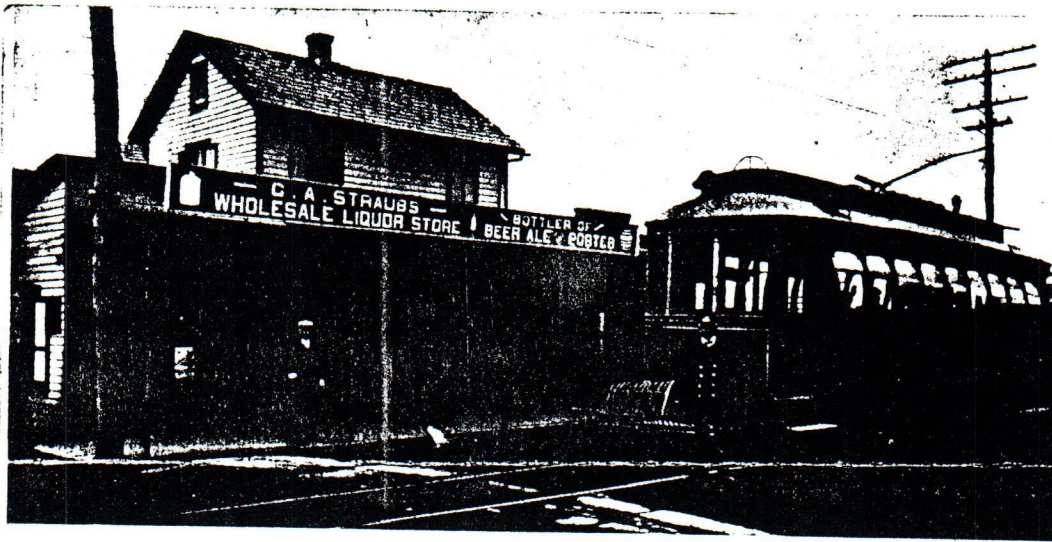
 * A SINCERE "THANK YOU" TO THE FOLLOWING WHO, THRU THEIR DILIGENCE, HAVE CONTRIBUTED *
 * TO OUR JANUARY 1990 ADDITIONS: RAY BRAUENER, CARL REES, HARRIET WALDO, BEN HOFFMAN, *
 * JOE CARDONE, BILL ENNIS, DON BULL, ED KAYE, HARRY Y. HORN, MARC BENJAMIN, JOHN HORN, *
 * THOM THOMPSON, VERNE VOLLRATH, VIC KEOWN, ART SANTEN, BILL MCKIENZIE, FIL GRAFF, *
 * LARRY BIEHL, JON RUCKSTUHL, TONY ZANGHI, OLLIE HIBBELER, BOB VAN VACTOR, LEHR ROE, *
 * HERB DANZIGER, LES CHAMBERLAIN, CHARLIE RENNER. *



THE LAST FEW OF THE ABOVE ARE AVAILABLE:
 "HANDBOOK" @ \$12.95 POSTPAID.
 "SUPPLEMENT" @ \$6.00 POSTPAID.
 ORDER FROM: ED KAYE

1478 ALBATROSS RD.
 SANIBEL ISLAND, FL 33957-3604

POTABLES IN QUAKERTOWN



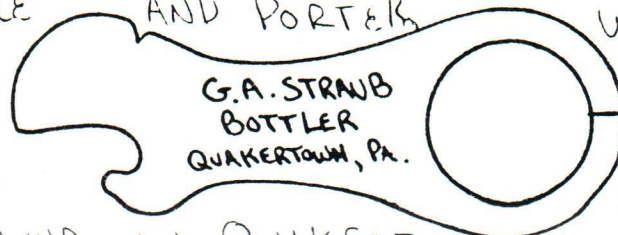
Hellertown Ave. & East Broad Street, Quakertown, Pa.

LOOK UP THE FEDERAL REGISTRATION OF BREWERIES AND YOU WILL NOT FIND A LISTING FOR QUAKERTOWN. SO, WHERE COULD ONE GO FOR SOME FRESH LIBATIONS IN THIS QUIANT PENNSYLVANIA TOWN?

WELL, AFTER TALKING WITH SEVERAL "OLD TIMERS" AND FINDING SOME LOCAL NEWSPAPER CLIPPINGS, I SOON DISCOVERED THAT QUAKERTOWN WASN'T EXACTLY BONE DRY.

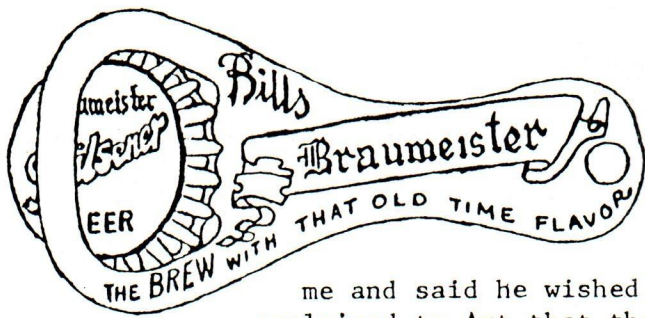
AROUND THE TURN OF THE CENTURY, 3 CENTS WOULD BUY YOU A SHOT OF WHISKEY AT THE RED LION HOTEL AND GRANVILLE A. STRAUB'S LIQUOR STORE (1898-1918) WAS JUST A TROLLEY RIDE AWAY. STRAUB SPECIALIZED IN WINES AND WHISKIES AND HE ALSO BOTTLED BEER, ALE AND PORTER WHICH WAS EAGERLY SUPPLIED BY THE NEARBY BREWERIES (BETHLEHEM).

SO, A GOOD WERE TO BE FOUND IN QUAKERTOWN.



CIGAR, A COLD LAGER.

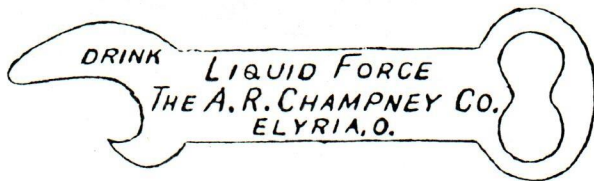
TONY ZANGHI
11/89



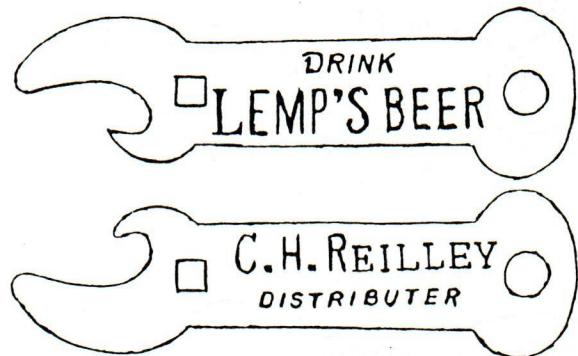
To start the New Year off I have designed a new logo for Opener Trivia. The old logo was crudely drawn and I feel its time for a change. Actually to be completely truthful the coup de grace was dealt by Art Santen at this year's opener convention. Art came up to

me and said he wished I would have used a REAL OPENER in my logo. I explained to Art that the logo illustrates a D-1-12 Budweiser opener (mind you Art is from St. Louis and has probably picked up a couple dozen of these in his collecting days) lifting a pre-pro Budweiser bottle cap off a bottle as viewed from the top. Upon hearing this Art stared at me with kind of a blank look on his face, and embarrassed, and at a loss for words blurted out: "OH". I figured out if Art didn't recognize this opener I probably didn't succeed in getting my idea across and probably no one else in the civilized world had identified it either.

To avoid any future confusion my new logo depicts a C-11-2 Braumeister opener lifting off a Braumeister bottle cap. I really like this opener because someone engraved my name on it. I even like it better because it is from the Independent Milwaukee Brewery and I was born in Milwaukee. What more could an opener collector ask? Not even Don Bull, Art Santen, and for certain not Fil Graff, have their name on an opener. Have you ever heard of Fil's Lager Beer or Monk's Special Brew? Why did they name him Fil anyway? If they were smart they would have named him Bill so he could have had his own special opener too. Touche, Fil!



Don Sherman (Los Angeles, CA) found this interesting opener. I wonder what "LIQUID FORCE" was? I'm not sure if I'd like to try it. It sounds like a great name for a laxative. Does anyone have any ideas?



B-22-UL

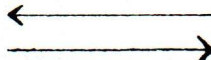
Here's a drawing I've been searching for for some time. I wanted to include it with my Opener Trivia article in JFO issue #34, April 1987, concerning openers from C. H. Reilley (Salt Lake City, Utah). Note the unusual spelling of "DISTRIBUTER" (ER instead of OR). I wonder if this was an accepted form at one time or just a spelling error?



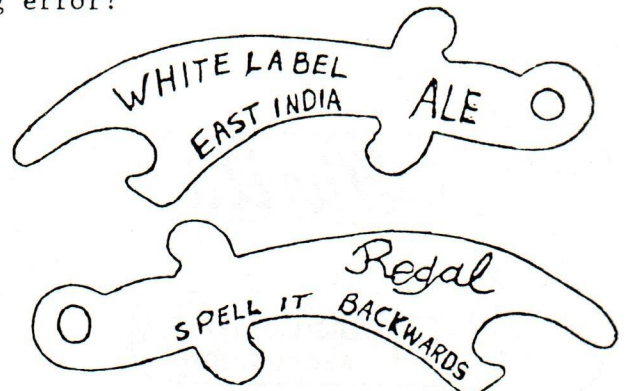
Mark Barren (Lockport, NY) would like to know which breweries these openers are from. The A-12-6 uses a neat catch phrase to advertise its product. Note that REGAL spelled backwards is LAGER.

Can you help Mark identify either of these openers?

C-13-58



A-12-6



OPENER TRIVIA CONTINUED

Carl Rees (Pocatello, ID) sent in photostats of the following openers to share with us. Most of the openers are from the Rocky Mountain Area and several are unlisted. I threw in the B-21-125 Puritas to be compared with his B-?-UL Puritas, which is probably a B-22 type that has been filed down and drilled.

Carl has some great openers here. I believe the "SUNSET" Beer is from Wallace, Idaho, but I have never heard of "CELILO" Beer. Does anybody have any idea where it might be from?

The reason I put the two "PURITAS" openers together is to illustrate the fact that the wording on these openers is the same, but the positioning of the words is different. Although these two openers are different types I can remember that at one time I had two openers of the exact same type with the same wording and the words positioned differently. This was very unusual and I can remember thinking that the listing for both of them would be the same, and anybody who only had one of them would never know that the other existed - one weakness of written listings.

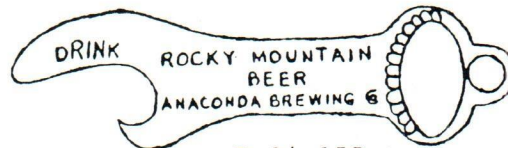
Thanks for your contribution, Carl! I know a lot of our members will enjoy seeing your openers.



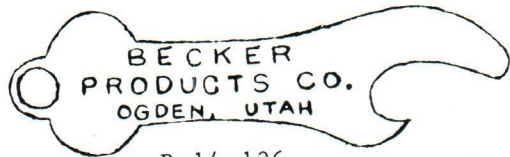
A-20-UL



B-22-93



B-14-155



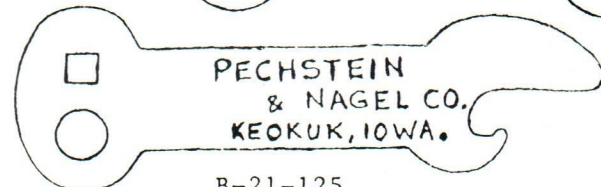
B-14-136



B-18-UL

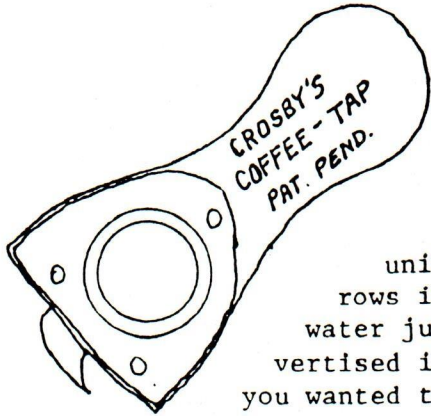


B-?-UL



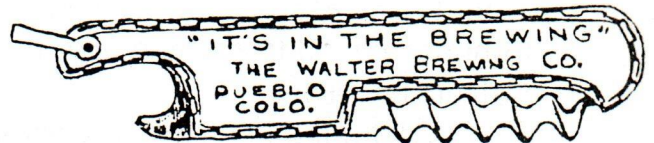
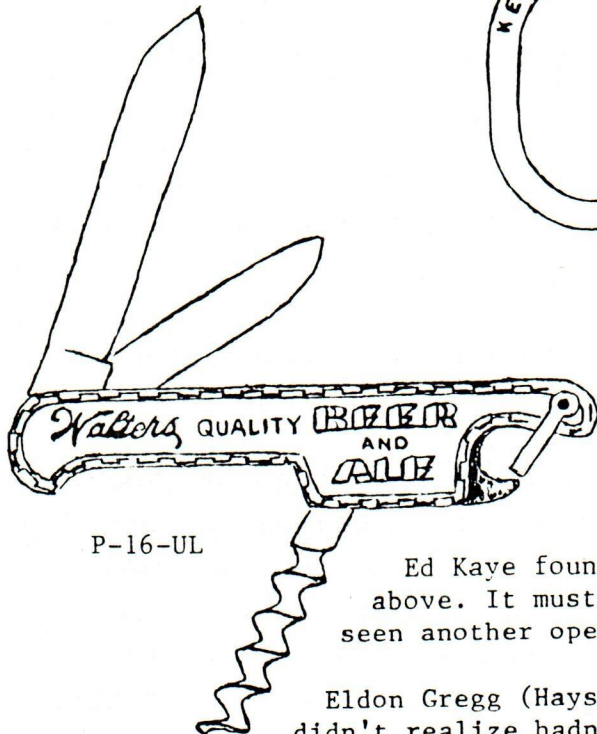
B-21-125

OPENER TRIVIA CONTINUED



When Larry Biehl (Calumet City, IL) saw Harold Kogut's new find in the last issue he knew exactly what it was. Larry writes:

"In the Oct. issue #2 & 3 from Harold is a coffee can opener used by the vending machine companies in their coffee machines some years back. The way it worked is quite unique. Ground coffee came in small cans and was put in multiple rows in the machine. Each can was opened from both ends and the hot water just poured thru to make the coffee "fresh brewed" as they advertised it. The opener was then left in the last can in the last row you wanted the machine to stop vending. Take my word for it, because when we were raising the kids, my second job was running a catering business."



Ed Kaye found the key-shaped opener-wrench-screwdriver pictured above. It must have been made exclusively for 3M as I have never seen another opener of this type with other advertising.

Eldon Gregg (Hays, KS) found the Walter's, P-16 type, knife (which I didn't realize hadn't been listed). In answer to your questions, Eldon, this is not a common piece. I have one in my collection, and have probably seen 3 or 4 others. Don Bull lists this type in his price guide, published in 1981, at \$25-30, but today I would imagine it would be hard to find one for less than \$50. Here in Colorado this piece is coveted by opener and breweriana collectors alike. I know several people that would kill to have one in their collection, and I imagine they might pay as much as \$75. I'm not an expert on knives, but I would guess that the knife dates to the early post prohibition period (1935-1940).

MERRY CHRISTMAS AND HAPPY NEW YEAR TO ALL OF YOU! I hope Santa brings you that one opener you've always dreamed of finding. Personally I went to see him a few weeks ago and asked for a P-84-1 Schlitz bar mounted corkscrew. He told me I was the first to request that particular type so if you were also thinking of asking him for one I think you'd be wise to make another choice. I just don't think there's a whole lot of them around, and I know he operates on a first come, first serve, basis.

Bill McKinnis

OPENER COLLECTOR OF THE MONTH

LEHR ROE

As corkscrew collectors go, our story is somewhat different from most in that it started out as Joan's collection. She found a folding harp that had once belonged to my grandfather and, even though we were not wine enthusiasts, found it interesting. She bought two or three more corkscrews at shows while I was looking for Ian Fleming first editions and a few months later she met Herb Danziger while they were both checking a dealer's stock.

By this time, my interest had developed and when Herb told us of the J.F.O. convention in Indianapolis, we decided to go. While there, even though we were not members at that time, we were really made welcome and made many new friends.

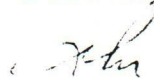
We immediately joined J.F.O. Our collection and knowledge grew and sometime later were invited to join the International Correspondence of Conkscrew Addicts. We are also members of the Canadian Corkscrew Collector's Club.

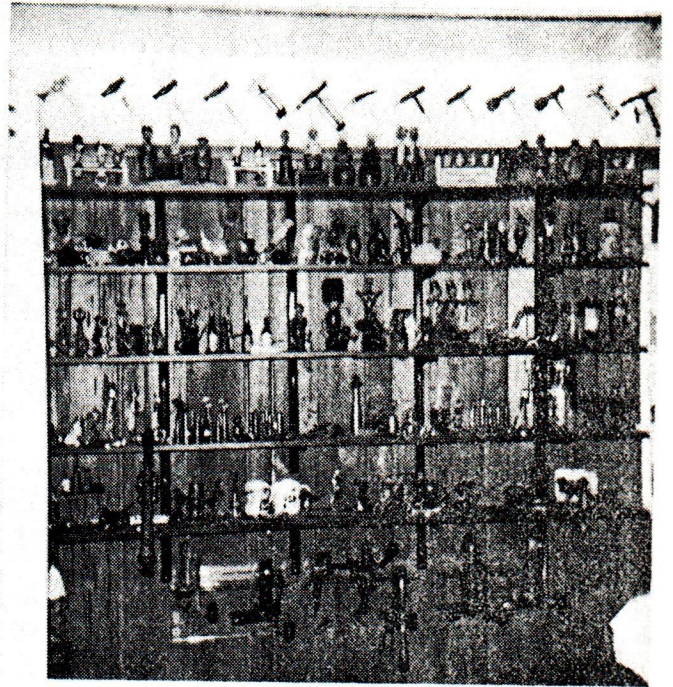
Although corkscrews are our major interest and collection, Joan collects Chinese Mud Men, I collect Ian Fleming items and John Rogers statuary. We both collect wooden corkers, cork presses and are interested in paintings and drawings. It doesn't get boring around here very often.

I'm not sure which corkscrew is a favorite, although several have stories (especially the ones that got away). We have spent considerable time and effort on the patents of Edward F. Haff. We've collected over twenty different examples of his work and are still trying to obtain one with a beer ad on the handle.

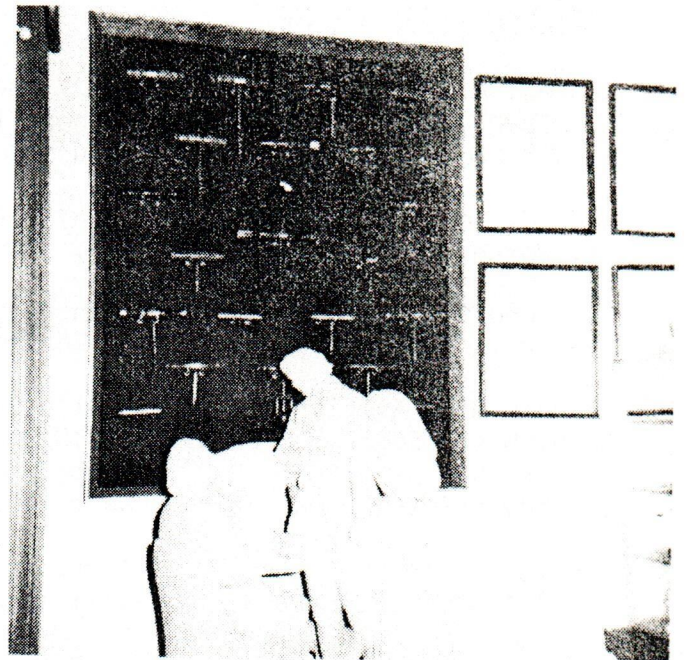
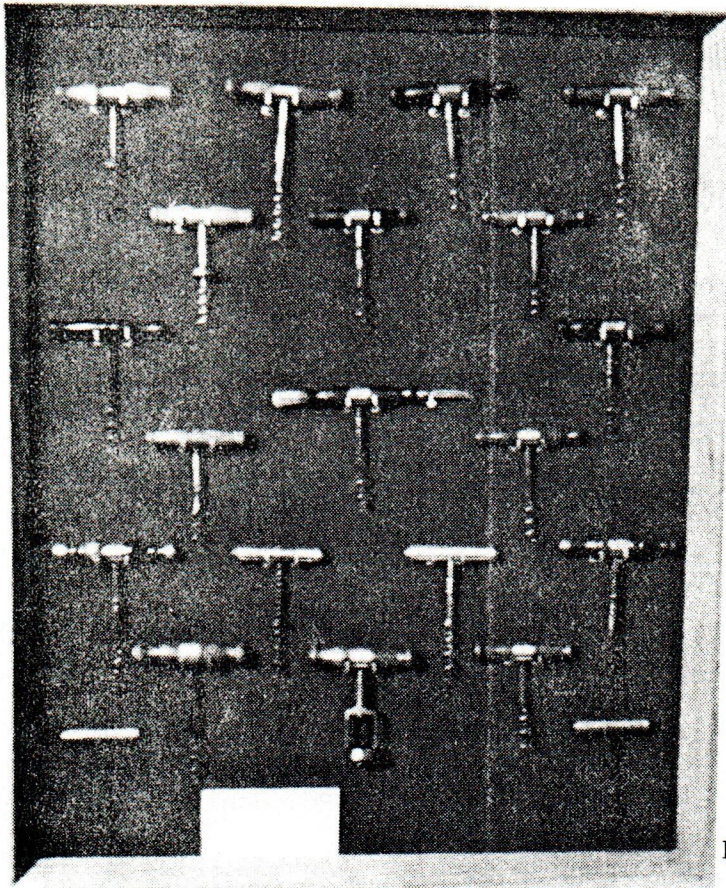
The most wonderful aspect of our collection has been the people we've met and have come to call friends. These number in the dozens from all over this continent as well as Europe. This association is the best part of our collections and will last as long as we do.

Best Regards





PORTION OF CORKSCREW COLLECTION



PORTION OF HAFF COLLECTION WITH ROGERS GROUP

LETTERS TO THE EDITOR

Art, your E-3-66 Stutz Beer was brewed by Overland Beverage Co. Inc. Nampa, Id. 1934-1950 They also brewed Overland, Crescent and EE-Dah-How. Stutz openers are few and far between out here. Carl Rees, Pocatello Id.

I found the information you wanted about the Stutz opener in " ALL ABOUT BEER". It was made by Overland Beverage co. Nampa, Id. Mike Raposo, West New YORK, NJ.

The B-65 Silver Foam opener came from the Sudbury Brewing and Malt Co. Sudbury, Ont. Canada. A box full was picked up at that Brewery. Lawrence Sherk, Toronto, Ont. (ED. NOTE) "CANADIAN BEER ADVERTISING OPENERS" By L. Sherk, is an excellent reference book. I use it quite often. In his book the: CB-9-1; CB-13-14; CB-23-29, prove his point.

Enclosed is a check. I have every issue from #1 thru #44, couldn't live without them. Harold L. Kogut.

Enclosed is my renewal check. My main interest is Schlitz related items - would you know of anyone who might have a Schlitz Whale or fold up Schlitz opener for sale? I nit-pik for all the varieties. Norma Mohr.

Here's an idea which just might promote some trade deals: Ask everybody what 3 Beer Openers they would most like to come across. "X Mas 1990 Dream List." My Top 3: 1) A-35-17 Pottstown; 2) B-28-1 Howell & King; 3) F-16-1 Wacker. Tony Zanghi.

CLASSIFIED ADS

Wanted: 'F' type beer advertising openers. Call or write for want list. Larry Biehl, 448 Crandon, Calumet City, IL 60409. 708-891-4269.

Want to buy all flat figural openers (Lions, Eagles, etc.). The key hole or key chain type, 2 7/8 inches long. Dale Deckert 4087 Lake Conway Wood Bl., Orlando, FL 32812. (Dale is a New Member).

Wanted: A10, A11, A14, A19, A22, A24, A27, A34, A37, A40, A41, A43, A46, A47, B51, B59, C25, C40, G27, L7, P58, P77, R5, R7, R8, R9, R10, R11, other figural types. Have many traders or will buy. Donald Gross, 716 Humbert Schoolhouse Rd., Westminster, MD 21157-1239. 301-346-7021.

Wanted: Very Good H-8's - (2, 5, 6, 8, 10, 14, 12, 15) Thanks, Mike Hennech, 2721 Stark, Ft. Worth, TX 76112. 817-496-1766.

Have one Syroco Wood Clown (unpainted version) to trade for corkscrews, bottle openers, or breweriana. Bill McKenzie, 6360 So. Jellison St., Littleton, CO 80123.

"Zang's Mini Auction": B-23-2 Apollo, F-2-10 Wacker and G-9-17 Scheidts. Openers go to highest bidder(s). Deadline 2/15/90. Anthony T. Zanghi, 2225 Deer Trail Rd., Coopersburg, PA 18036. P.S. any good A&B types Penna. openers? I have an R-11 (no advertising) available. thanks Tony Z.

Results of 10/89 "Zanghi Mini Auction": A-21-11 Cataract \$12.40; B-31-5 Kuebler \$28.00; and C-13-168 Chester No Bids. I'll close for now. "Merry Xmas" Tony Zanghi.

Urgently Need the following: A-9-8 Eureka; A-9-11 Ringler; A-9-21 Amber; A-9-30 Bethelam; A-9-31 Detroit; A-9-26 Penn; A-9-33 Rainier; A-9-29 Waldorf; To Complete My Collection. Will buy or trade heavy. Ed Kaye, 1478 Albatross Rd., Sanibel, FL 33957.

Wanted: Lexington Brewery (Dixie Beer) and Coca-Cola openers, want to buy figurals and unusual older openers. Have A, B & C Brewery Openers for trade. Thom Thompson, 123 Shaw Ave. Versailles, KY 40383. (606) 873-8787. Thank You, Thom.

CONVENTION UPDATE

EVERYTHING IS SET FOR THE 12TH ANNUAL "JUST FOR OPENERS" CONVENTION TO BE HELD APRIL 26, 27 AND 28, 1990 AT THE SHERATON UNIVERSITY CENTER, DURHAM, NORTH CAROLINA.

WE HAVE A NEAT HOSPITALITY ROOM THIS YEAR, WITH TWO BATHROOMS, ONE FOR CHILLED BEER AND THE OTHER SO YOU WON'T HAVE TO RUN BACK TO YOUR ROOM AFTER DRINKING TOO MUCH BEER!!! PAT AND I WILL BE THERE WEDNESDAY AFTERNOON, LOOKING FORWARD TO GREETING THE EARLY ARRIVERS.

THURSDAY WILL BE FILLED WITH RENEWING FRIENDSHIPS AND CHECKING OUT ALL THE GREAT ADDITIONS TO EVERYONE'S COLLECTION SINCE OUR FUN TIME IN FRANKENMUTH.

WE DO NOT HAVE ANY MAJOR BREWERIES IN DURHAM, BUT HOPE WE CAN ARRANGE FOR EVERYONE TO ENJOY A REASONABLE BUFFET FRIDAY AT A SMALL RESTAURANT WHICH BREWS IT'S OWN GERMAN BEER ON IT'S PREMISES. (WE ARE WAITING FOR MORE REGISTRATIONS BEFORE MAKING FINAL ARRANGEMENTS).

LATE FRIDAY AFTERNOON WILL BE THE FAMOUS AUCTION. HOPE TO SEE SOME REAL CHOICE OPENERS AND CORKSCREWS TO MAKE VERN'S WORK WORTH-WHILE.

ON SATURDAY, THE SHOW (OPEN TO THE PUBLIC) WILL BE FROM 9 AM TO 3 PM DURING WHICH RAFFLE TICKETS WILL BE DRAWN FOR PRIZES. AWARDS WILL BE GIVEN FOR THE BEST DISPLAYS EVEN THOUGH PAT HAS BEEN A "BASKET" CASE SINCE HER ADORABLE PICNIC BASKET DISPLAY DID NOT EVEN GET HONORABLE MENTION LAST YEAR.

LADIES
=====

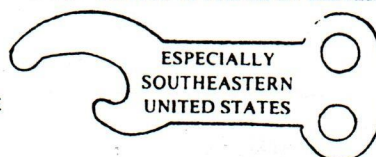
BRING YOUR CROSS STITCH MATERIALS IF YOU WANT TO WORK ON SOME OF THE ANHEUSER-BUSCH OR SPUD'S MAC KENZIE PATTERNS PAT HAS.

THERE IS A NICE SHOPPING CENTER NEAR BY, A GREAT POTTERY PLACE, AN ELEGANT SILK PLANT STORE, PLEASANT GARDENS TO WALK IN AND LOTS OF OTHER THINGS TO ENJOY. PAT WILL BE GLAD TO DRAW MAPS TO GET YOU TO ANY PLACE YOU ARE INTERESTED IN.

AS OF MARCH 6TH, WE HAVE 20 REGISTRATIONS. HOPE YOURS IS ONE OF THEM!!!

ANTIQUÉ BOTTLE OPENERS,
CORKSCREWS, PLAYING CARDS,
& ADVERTISING ITEMS IN GENERAL

BUY
SELL
TRADE



MEMBER
JFO.CPCC.
ABA.NABA.
JOKER + 52

JOHN STANLEY
605 WINDSONG LANE
DURHAM, NC 27713
919-493-9802

JFO CONVENTION QUESTIONNAIRE

CONVENTION TO BE HELD IN DURHAM, NORTH CAROLINA
THURSDAY-SATURDAY APRIL 26, 27 & 28, 1990

- _____ I WOULDN'T MISS IT. HURRAY!!!! (COMPLETE REGISTRATION BELOW)
- _____ I'M STILL TRYING TO WORK OUT A WAY TO ATTEND. KEEP ME INFORMED!
- _____ UNFORTUNATELY I CAN NOT ATTEND. (WISH I COULD).

NAME _____

ADDRESS _____

CITY _____ STATE (PROVINCE) _____ ZIP _____

REGISTRATION FORM

12TH ANNUAL "JUST FOR OPENERS" CONVENTION
THURSDAY-SATURDAY APRIL 26, 27 & 28, 1990
SHERATON UNIVERSITY CENTER (\$54 SINGLE/DOUBLE)
15-501 BYPASS AT MORRENE ROAD
DURHAM, NORTH CAROLINA

NAME _____

ADDRESS _____

CITY _____ STATE (PROVINCE) _____ ZIP _____

HOW WILL YOU ARRIVE? CAR _____ PLANE _____ OTHER _____

DATE YOU WILL ARRIVE _____ APPROXIMATE TIME OF ARRIVAL _____

ONLY THE MEMBER PAYS A REGISTRATION FEE. THIS YEAR THE FEE IS \$30. IT INCLUDES ONE TABLE FOR THE SHOW ON SATURDAY (EXTRA TABLES ARE \$10 EACH), HOSPITALITY ROOM, SOUVENIR KIT, AND ANYTHING ELSE WE CAN COME UP WITH TO MAKE YOUR VISIT ENJOYABLE!

ENCLOSED: \$30 REGISTRATION FEE. \$10 EXTRA TABLE: YES ___ NO ___

NAMES FOR CONVENTION BADGE _____

RETURN TO: JOHN STANLEY
605 WINDSONG LANE
DURHAM, NC 27713
(919) 493-9802