

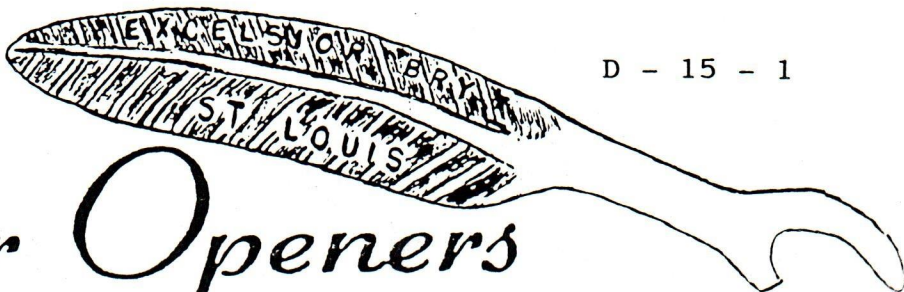
Just For Openers

6126 MCPHERSON, ST. LOUIS, MO 63112

(314) 863-6798

JAN 1992

ISSUE 53



The St. Louis Arch Club wishes all of our Friends a Happy New Year. John & Jay Goff, (Our Christmas Party Hosts) Ollie & Shirley Hibbeler, Vic & Mary Ann Keown, Lou & Rosemary Kovarik, Conrad & Kay Schmitt, Art & Dorothy Santen. Pictures of the party appear on page two.

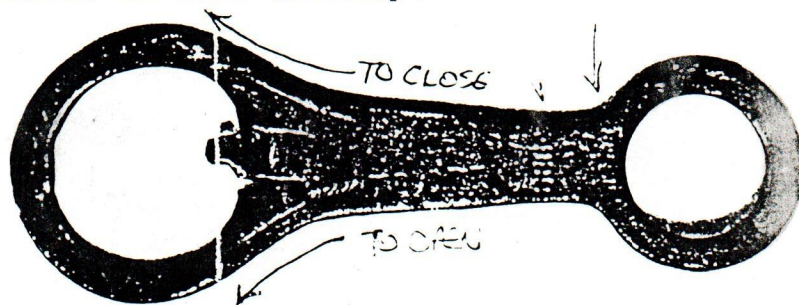
THEY ARE WAITING FOR YOUR CONVENTION RESERVATIONS-SEE PG-8 FOR DETAILS

MY MISTAKE-In the last N.D. the B-68 should be corrected to A-53. It is the same shape as the A-30 but with the gas key hole. Listing the Openers of the same shape, with and without the gas key hole, is a very controversial subject. I will save a page in the next JFO for comments.

JOE CARDONE'S Auction Sheet is enclosed in this envelope.

Can you tell me anything
about this Opener. 688-2
Have a great Year. PAT. Sept. 16
See you in April. -08.
NO NAME

Joe Young



BUY - SELL - TRADE

WANTED: Soda Openers, Cigar Cutters, Trade Beer, Soda Openers or Cash.
Bill Ennis 12220 14th Dr. SE, Everett, Wa. 98208

FOR SALE: New Aquisition: N-34-UL single blade, no lanyard ring, G. Schrade
The Star Beverage Co. Minister, Ohio/Wooden Shoe Lager Beer
\$42.00 + Post. Multi-page list-2 stamps
Carl Jantos, 7025 Kevin Dr. Bethel Park, Pa. 15102

WANTED: From Jordan's Book of Figural Openers the J-149 Kaiers Beer
Opener and the J-163 Coyote wall mount. Will pay your price.
Charlie Reynolds, 2836 Monroe St. Falls Church, Va. (703)533-1322

TRADE: My rare Camden Beer and Lord Camden Ale mini bottles (exc. cond.)
For Pa. Beer Openers (A & B types) that I need. Send List.
Anthony T. Zanghi, 2225 Deer Trail Rd., Coopersburg, Pa. 18036

WANTED: B-23-95, B-23-96, B-23-120, from HARRY MITCHELL'S Brewery
I have many good traders. John Stanley, 605 Windsong Lane, Durham, NC.

WANTED: Unusual Wall Mount Openers, Send description & price to;
Dave Derrick 1015 National St. Vicksburg, Ms. 39180

A TRUE STORY
OLLIE HIBBELER

[an AVID-keenly eager COLLECTOR-one who gathers into one place]

The first Sat. of Nov.1990, my wife Shirley and I decided to go to a couple of antique malls in Sedalia,Mo.,about 75 miles from home. After visiting them with just a few items to show for our time, we turned down an old commercial street. There it was, an old home in terrible condition. It was a junk shop. Upon entering, the cats and smell was very evident. You have been there before, I know! Picking my way carefully thru everything that was strewn about, I saw what first appeared to be three nondescript C.S. on a shelf. But "EUREKA", One was a P-42-1! I didn't have the style or # memorized, but I saw the words on it: BARTHOLOMEY-ROCHESTER.

There was no price on it so I asked the lady, who appeared to be in her 80's, how much she wanted. She replied "If there is no price I can't sell it. My sister who owns the store won't allow it." O.K. says I, "Give me her phone number and I will call her" She replied "We have no phone" O.K. says I "Here is my card. Have her write to me." "Please don't forget."

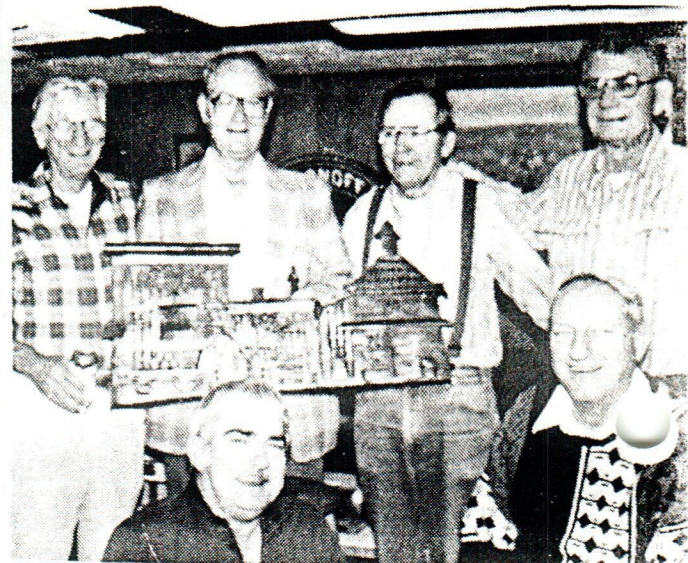
THANKSGIVING CHRISTMAS NEW YEARS came and went NOTHING
Another trip in Jan. CLOSED Another trip in March CLOSED Another trip in May and by this time we had everything in the two Antique malls memorized. The junk shop was open! There it was still on the same shelf, and still no price on it. The same lady repeats the same story. "No price tag - I can't sell it."

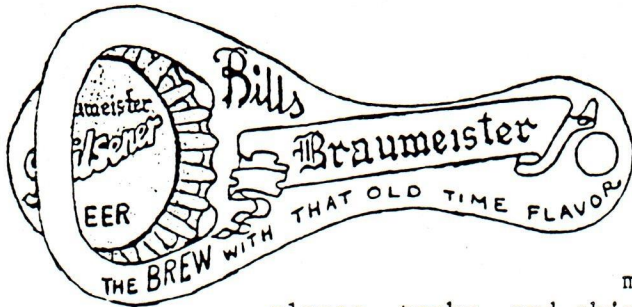
My wife went to Las Vegas in July for a four day trip. Off I went on Saturday, back up to Sedalia. Junk shop closed. As I am standing on the sidewalk thinking how crazy this whole "chase" had gotten, I waved to a man standing in the doorway of his upholstery shop next to the junk shop. My "IDEA BULB" clicked on. I walked over and told him my story. I then asked him about the ladies. Just as I thought, the older lady whom I had never met, was definitely in charge. I gave him my card and asked if he would find out if the C.S. was still there and how much it cost. He said he would be glad to do it for me as he was an antique "bread toaster" collector, so he really understood. Some people collect the weirdest things, don't they? The following Wed. he called collect at my Dental Lab. He says, "I got it for \$10.00" "GOOD" says I. So I sent him an empty box with a prepaid mailing sticker, a \$10.00 bill, a little finders fee and a big THANK YOU. Got my P-42-1 the next week, with a note inside.

Dear Ollie, Really enjoyed the experience. Next time you are in Sedalia, stop by and visit. Be on the lookout for old toasters.

Thanks for the finders fee. Your friend John

Now I have something else to look for! Can you top this for a story? If so send it to Art Santen.(Ed. Note) Only if typed to fit JFO format.





This issue of Opener Trivia features two Adolph Coors Company newspaper ads from September 1942. The ads are especially interesting because they show how the brewery industry was being affected by the war. I imagine that during the war mil-

lions of openers, A and B types included, were melted down to supply steel for the production of

planes, tanks, and ships. One would think that many families kept only one steel opener or perhaps used a wartime opener such as the one illustrated below to open their bottles.

Coors Golden Beer was produced from 1934 through 1945, the year the war ended. Notice that the ads advertise Coors Golden Beer as "AMERICA'S LIGHTEST BEER". After the war Coors stopped using the word "Golden" and changed their slogan to "FINE LIGHT BEER". They used "FINE LIGHT BEER" until the late 1940's when they changed it to "AMERICA'S FINE LIGHT BEER", a slogan they used into the late 1980's. This information often proves helpful when dating Coors bottle openers and other Coors breweriana from the post prohibition period.



In this issue I have illustrated most of the Coors wire formed bottle openers in my collection. I omitted a few minor varieties, but I mention them in the notes concerning the openers. One thing that you might observe is that on the earlier Coors openers advertising "Golden Beer" the s of Coors does not have a tail on it while on later Coors openers the s has been changed to include a tail (see below).

s (s without tail)

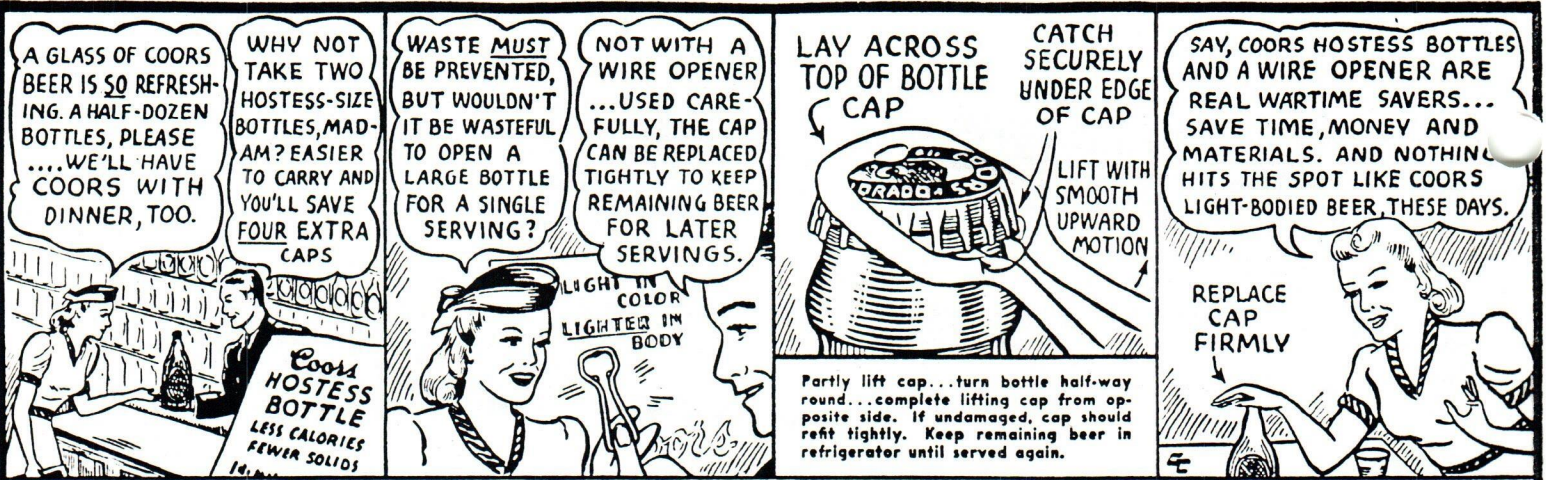
s (s with tail)

Under each opener there is either a catalogue number or if the opener is an E-14 type a note as to which variety it is (i.e. variety E-14a). To reference the different E-14 varieties see Opener Trivia in JFO #39, July 1988. Many of these E-14 openers have the same wording and have been listed under the same catalogue number. One way of identifying them from each other is by noting the variety.

ABOUT THE OPENERS

- ① A wartime bottle opener made from a piece of 5/8 inch thick wood and a small nail. The color of the wood is a natural blond and the wording and detail appear in brown.
- ② The reverse wording is exactly the same as the obverse wording except without "MADE IN U S A". Copper plated.
- ③ The reverse wording is exactly the same as the obverse wording except without "MADE IN U S A". Copper plated.
- ④ The reverse wording is exactly the same as the obverse wording except without the manufacturer's mark. You will notice that it is different from opener ③ in that it has a large fret at the top. Compare it with opener ③ and you will notice it is made of a lighter gauge metal and has a slightly different shape than a normal E-14f variety opener (it could technically be classified as another variety). The opener shows no evidence of being copper plated, although I suspect it once was.
- ⑤ The reverse wording is exactly the same as the obverse wording except without the manufacturer's mark. Copper plated.

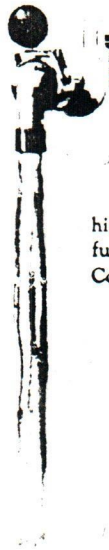
(con't. on pg. 7)



SAVING MATERIALS AND SERVING YOU... *That's Coors Job Today!*

No need to waste vital materials. Bottle caps are rationed . . . the quota must be managed carefully to assure you of your supply of bottled beer whenever you want it. Buy Coors Hostess Bottles . . . use a wire opener and serve from one to five people. A wire opener, used carefully, hardly mars the cap . . . after single servings you can replace the cap tightly, return the remaining

beer to your refrigerator to keep Coors light-bodied goodness for later servings. You save two caps when you use one Coors Hostess bottle . . . cork and glass, too. You can help further by returning the metal caps when returning bottles. Ask for Coors Hostess Bottle the very next time you order Coors Light-bodied Beer . . . for complete beer enjoyment, *plus* material savings.



Coors Light-bodied Draught Beer comes to you brewery-perfect, thru dispensing equipment that is scientifically clean. The engineering service and supervision of Coors is behind every exclusive draught outlet, to further assure you that you always get Coors at its best.

Coors at its best.

DO YOU CHOOSE YOUR BEER WITH CARE?
(Many people don't)

To you who never gave a thought to the importance of choosing your beer with care . . . try one . . . or two glasses of Coors Light-bodied Beer . . . drink the amount you usually do . . . or more if you wish. Then, the next time, try to drink a heavier beer. You will choose the new Coors beer lightness ever after!

Coors

AMERICA'S LIGHTEST BEER

Adolph Coors Company, Golden, Colorado, U.S.A.

LISTEN TO: "SHORTY & SUE OF COORS," 9:15 P. M., TUESDAYS, KOA.

BREWED TO THE PEAK OF TASTE PERFECTION WITH PURE ROCKY MOUNTAIN SPRING WATER

FULLY AGED BEER IS BETTER



D3 9.3.42



Coors HOSTESS BOTTLE



WILL SERVE UP TO FIVE PEOPLE

There is no shortage of Coors beer . . . but there is a shortage of BOTTLE CAPS. All brewers are affected alike by present rationing. However, you may continue to enjoy the same-quality Coors bottled beer by using the COORS HOSTESS BOTTLE . . . makes one cap do the work of three. Buy the COORS HOSTESS BOTTLE (labeled GOLDEN BEER) and serve from one to five people. You will help make metal and other bottling materials go further.

TO YOU WHO DRINK BEER

As in days of yore, Coors light-bodied goodness is a pleasant and agreeable companion with your snacks, sandwiches and lunches, because Coors Light-bodied Beer contains less calories . . . fewer solids. Coors quality, purity and flavor assure you complete beer enjoyment every time. That's why Coors is honored in the company of the world's finest beers!

HERE'S HOW YOU CAN HELP YOUR DEALER HELP YOU . . .

- Anticipate your Coors beer needs and order several days in advance . . . ask your dealer to reserve the amount you want.
- Order the COORS HOSTESS BOTTLES . . . each serves up to five people . . . helps your dealer deliver more beer per bottle cap.
- For individual serving, use a wire opener carefully to avoid damage to cap . . . replace cap and return remaining beer to refrigerator for later servings.
- Return used caps to your dealer with empty bottles. (Please return caps loose . . . not fastened to the bottles).
- In taverns, etc., ask for the same Coors beer quality on draught . . . helps conserve the bottled supply for other occasions.

13% LESS CALORIES
(FEWER SOLIDS)
LIGHT IN COLOR — LIGHTER IN BODY

Coors

AMERICA'S LIGHTEST BEER

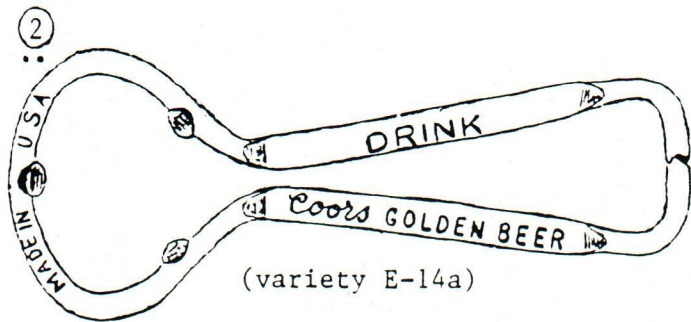
Adolph Coors Company, Golden, Colorado, U. S. A.

LISTEN TO: "SHORTY & SUE OF COORS," 9:15 P. M., TUESDAYS, KOA.

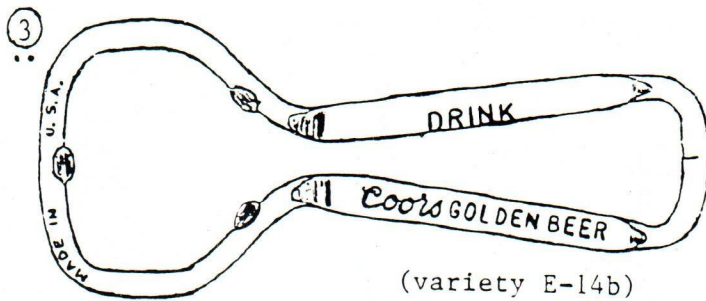
BREWED TO THE PEAK OF TASTE PERFECTION WITH PURE ROCKY MOUNTAIN SPRING WATER

FULLY AGED BEER IS BETTER

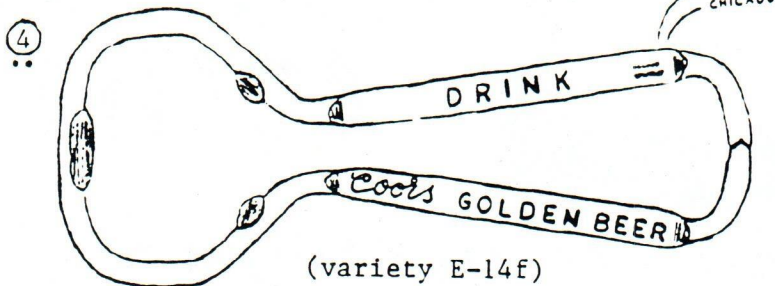




(variety E-14a)

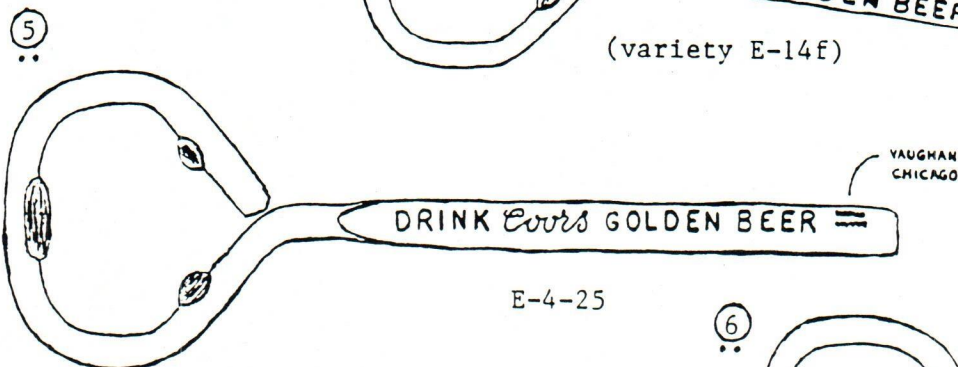


(variety E-14b)

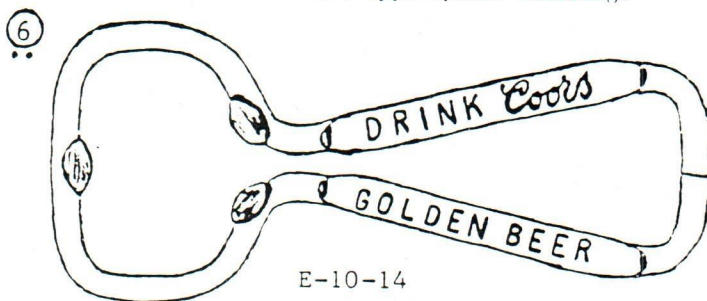


(variety E-14f)

Note: All of the openers on this page, except openers ⑤ and ⑥, have been listed as E-14-52. Opener ② has probably been mis-listed as E-9-89, although it is not a true E-9 type. I am unaware of any Coors E-9 type opener existing.



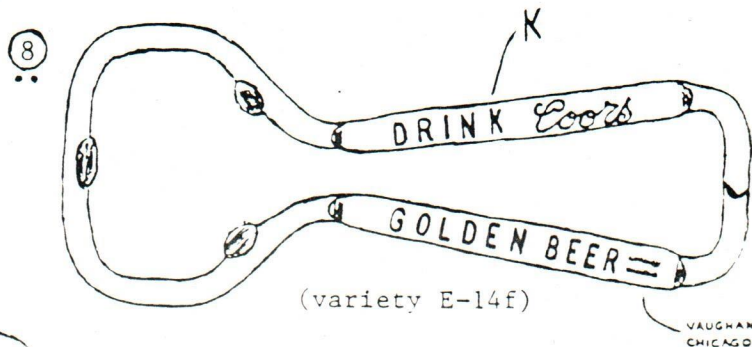
E-4-25



E-10-14



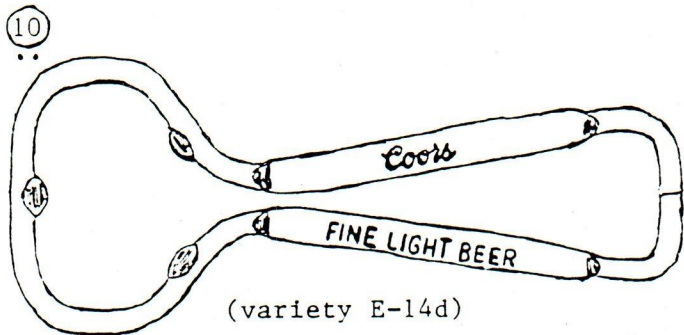
(variety E-14h)



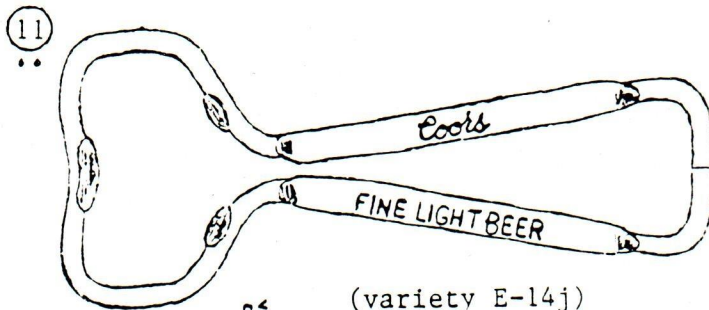
(variety E-14f)



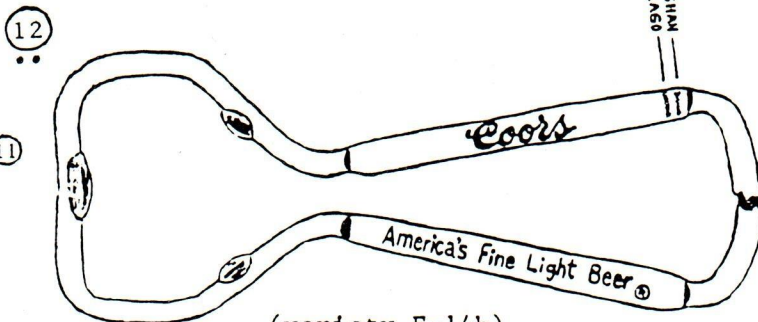
(variety E-14h)



(variety E-14d)



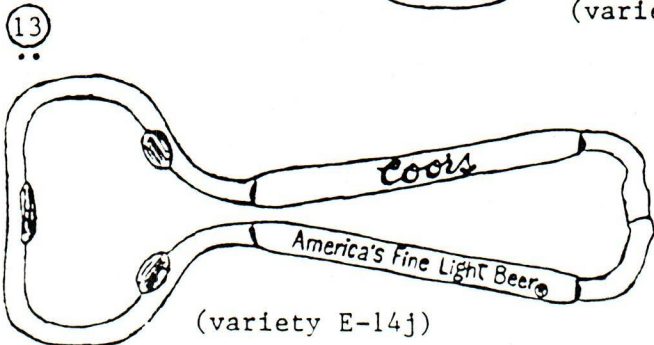
(variety E-14j)



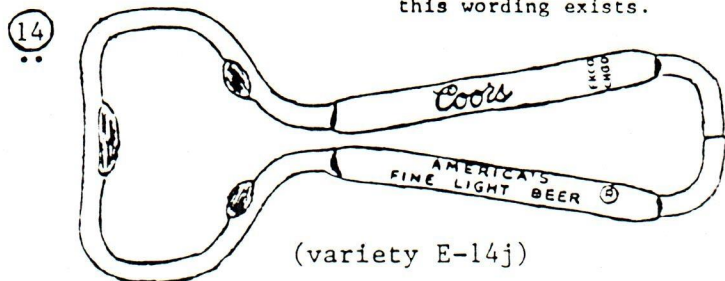
(variety E-14h)

Note: Openers 10 and 11 have been both listed as E-14-51.

Note: Openers 12, 13 and 14 have all been listed as E-14-50. One of them has also been mislisted as E-10-62. No E-10 type with this wording exists.



(variety E-14j)



(variety E-14j)

- 6 The reverse wording is exactly the same as the obverse wording. No manufacturer's mark appears on either side. Copper plated.
- 7 The reverse wording is exactly the same as the obverse wording (including the manufacturer's mark). Minor varieties of this opener exist. On these varieties the spacing of the letters is slightly different and the manufacturer's mark appears on one side only. There is no evidence of copper plating on any of the specimens (?).
- 3 The reverse wording is exactly the same as the obverse wording except without the manufacturer's mark. Observe the unusual way the letter K has been drawn. Copper plated.
- 9 The reverse wording is exactly the same as the obverse wording. No manufacturer's mark appears on either side. Compare this opener with opener 7 and observe the large difference in the spacing of the letters. Copper plated.
- 10 The reverse wording is exactly the same as the obverse wording. No manufacturer's mark appears on either side. Compare opener's shape and size of the top fret with opener 11. Chrome finish.
- 11 The reverse wording is exactly the same as the obverse wording. No manufacturer's mark appears on either side. Compare opener's shape and size of the top fret with opener 10. Chrome finish.
- 12 The reverse wording is exactly the same as the obverse wording except without the manufacturer's mark. Compare with opener 13. Comes with either a chrome or cadmium finish.
- 13 The reverse wording is exactly the same as the obverse wording. No manufacturer's mark appears on either side. Compare with opener 12. Chrome finish.
- 14 The reverse wording is exactly the same as the obverse wording except without the manufacturer's mark. Compare the group of words "AMERICA'S FINE LIGHT BEER"® with those on openers 12 and 13. Chrome finish.

(con't. on next page)

(OPENER TRIVIA from pg.)

To close I would like to make the following comments. First I must apologize to Ed Kaye for misspelling his last name in the last issue. Of anyone I don't know how I could have misspelled his name. We've been friends for so many years. I must have read over it in a blur or maybe the type is just too small for me to read anymore. Secondly, each of the numbers of the openers pictured in this issue is circled with two dots beneath it. The two dots indicate that the drawing was made from the actual opener (see Opener Trivia #24, JFO #52, Oct. 1991) for a further explanation of my coding system. Lastly, I would like to thank all of you that sent me Christmas cards and letters, and let you know that I haven't forgotten you. I will try to write when I have some time. I am just very busy and must ask you to be patient. God bless you and my best to you and yours in 1992.

Bill McEwen

14TH ANNUAL
JFO CONVENTION REGISTRATION

THURSDAY-SATURDAY APRIL 23, 24, & 25, 1992

DRAWBRIDGE INN - OLDENBURG BREWERY
FORT MITCHELL, KENTUCKY

NAME _____

ADDRESS _____

CITY _____ STATE _____ ZIP _____

ARRIVAL DATE & TIME _____ DEPARTURE DATE _____

METHOD OF ARRIVAL _____ BY CAR ___ OR PLANE ___

ROOMS (RATES ARE \$41.00/SINGLE & \$51.00/DOUBLE) WILL BE IN THE GARISON WING. REGISTRATION IS \$35.00 PER MEMBER (INCLUDES WELCOME KIT, SHOW TABLE, HOSPITALITY ROOM, PRIZES, AND FRIDAY NIGHT DINNER WITH ENTERTAINMENT SHOW & DANCING IN THE GREAT HALL AT OLDENBURG). GUEST FEE IS \$25.00 WHICH INCLUDES FRIDAY NIGHT DINNER & SHOW. IF A MEMBER DOES NOT WISH TO ATTEND THE FRIDAY NIGHT SHOW & DINNER, THE REGISTRATION FEE IS \$30.00.

THE "BREWER'S MONK", FIL GRAFF, WILL CONDUCT A CINCINNATI BREWERY TOUR ON THURSDAY APRIL 23 IN THE AFTERNOON. COST FOR THE TOUR IS \$10.00 PER PERSON. WE MUST HAVE A MINIMUM OF 30 PEOPLE FOR THE TOUR. IN THE EVENT 30 PEOPLE DO NOT SIGN-UP, MONEY WILL BE REFUNDED.

NAMES FOR CONVENTION BADGES _____

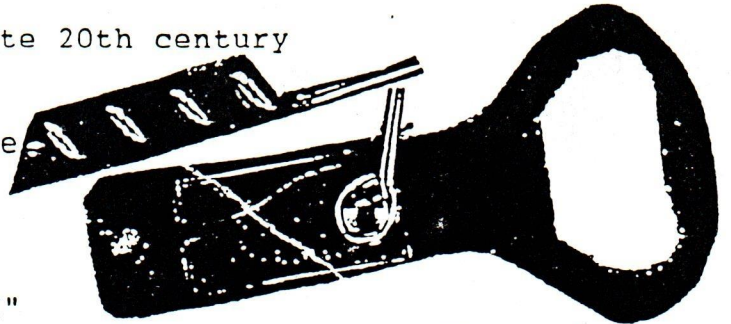
PLEASE SEND REGISTRATION FEE, GUEST FEE, AND TOUR FEE IN ADVANCE
PLEASE MAKE CHECKS PAYABLE TO TOM ZRUNO
AN OLDENBURG CERAMIC MUG WILL BE GIVEN TO THE FIRST PERSON WHO REGISTERS

PLEASE REMEMBER TO BRING A DISPLAY

RETURN TO: TOM ZRUNO
29 ELAND COURT
FAIRFIELD, OH 45014
(513) 874-7922

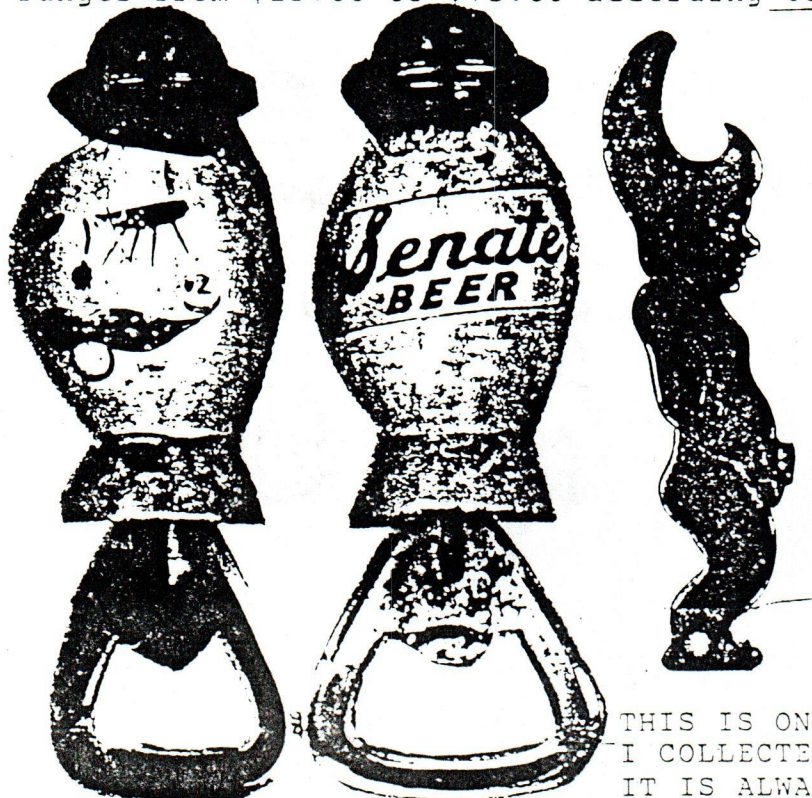
I would like to have information on how to obtain the new style openers. (C-42,0-13,R-13,any of the Q types) I asked my local liquor stores, but they say they don't have any. Donald L. Gross Westminister,Md.
 (EDITORS NOTE) If anybody has any of these openers for sale, please send all the information to me. Also if anybody knows of a store or a Brewery shop or a Brew Pub that sells these openers, please send me the complete address and style and cost of them. I will then print all of this information in the JFO. This will help any interested member.

I have enclosed a photocopy of a late 20th century nickel plated steel opener that is simply a worm riveted to a stamped steel cap lifter. It appears to have been commercially manufactured and advertises CocaCola. There are two other words in the stamping that I don't know the language. *Li ~ fruty*
 It also says: "COCA COLA TRADE MARK"
 I realize it is not a beer opener but perhaps one of our JFO members can identify the language. Ron MacLean,4201 Sunflower,Mississauga,Ont. L5L 2L4 Canada (PLEASE ANSWER IN THE JFO)



Allow me to comment on the #35 opener shown on page 6 of Oct.1991 JFO-52. The opener says 10,000 yen but the design resembles the Japan Olympics 1,000 yen silver commemorative coin. In 1964 the exchange rate was 360 yen to a U.S. dollar so the 1,000 yen coin had a face value of about \$2.78. That same coin at today's exchange rate of about 130 yen to a U.S. dollar would be worth about \$7.69, however, it's coin collector's value ranges from \$25.00 to \$75.00 according to a coin catalog. Kazuma Oyama

ALOHA



THE TALE OF PETER
 MY HEAD'S TO OPEN BOTTLES
 MY FEET TO HANG ME UP
 MY HANDS UPON THE THROAT
 WHILE POURING IN THE CUP
 SO PUT A LIGHT BEHIND ME
 AND YOU WILL CLEARLY SEE
 THAT A DRINK WILL DO TO YOU
 JUST WHAT ITS DONE TO ME

THIS IS ONE OF MY MOST "INTERESTING" OPENERS. I COLLECTED IT IN FORT SCOTT KS. FOR \$5.00. IT IS ALWAYS GOOD FOR A LAUGH. I CALL IT MY PEE WEE HERMAN OPENER. BILL NANTT
 REV: THE SMOKER FT. SCOTT KANSAS
 BILLIARDS, BEER, TOBACCOS
 ED. NOTE: I ADDED THE POEM WHICH I FOUND ON A CARD WITH THE OPENER ON IT.

HAS ANYBODY SEEN THIS OPENER?
 PLEASE SEND ME ANY INFORMATION ABOUT IT.
 ART SANTEN

OPENER COLLECTOR OF THE MONTH

ADVERTISING BEER OPENER COLLECTION - Lyle Feisel, Binghamton, NY

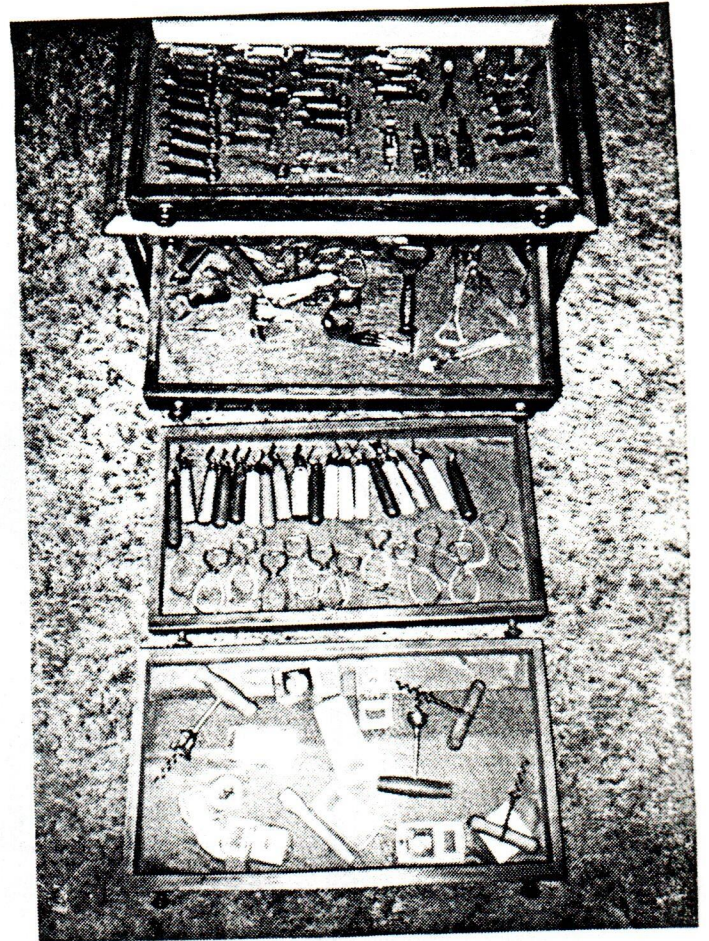
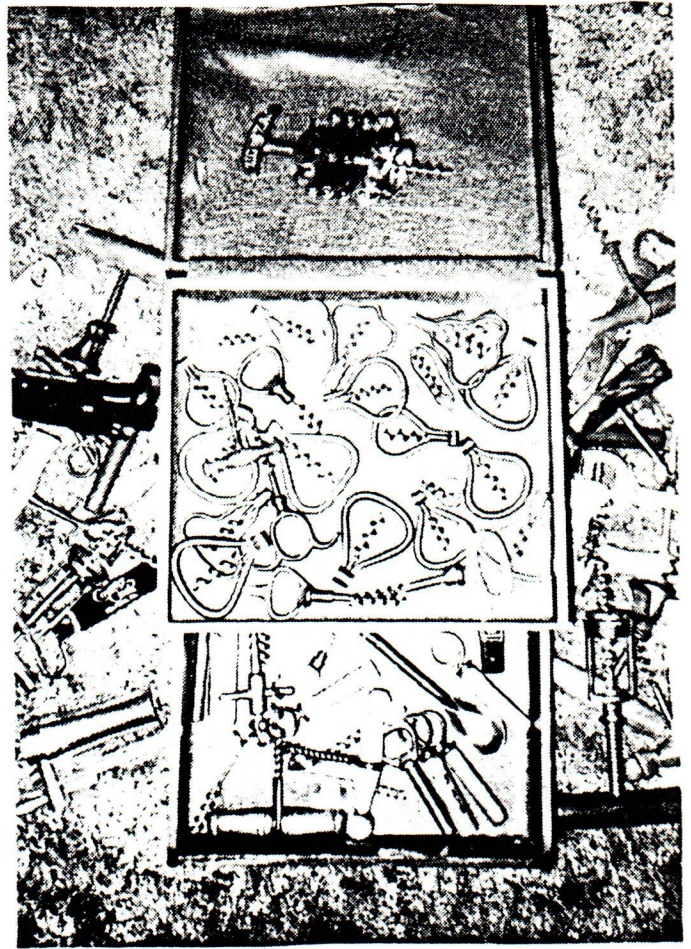
I guess my collection really started about 10 years ago. I was living in Rapid City, South Dakota, at the time, and while working in the shop, came upon half a dozen "church keys". I realized that, although they used to be given away in every tavern, with the advent of screw-top bottles and pop-top cans, they were no longer needed, nor being produced, and that it would be a good idea to tuck away a few so we could someday show them to our grandchildren and tell them about "olden times". Then, in 1983, we moved east, to Binghamton, in upstate New York, where I became Dean of Engineering at SUNY-Binghamton.

Before the cross-country move, we sold and gave away a lot of things, rather than pay to move everything, so shortly after the move, we began frequenting garage sales and flea markets to pick up some necessities. Well, it wasn't long before I realized that my little sampling of beer openers wouldn't tell a very big part of the story! I had NO IDEA there were so many different types, so started picking up the different ones - still available then for a dime or a quarter.

I can't remember when and where I heard about Just For Openers, but I didn't waste any time in joining, and have all the issues since January, 1985. That's how I heard about Donald Bull's books, which I have found essential in cataloging my collection, which now numbers in excess of 700 different beer advertising openers, a batch of other beer openers, and about 50 corkscrews.

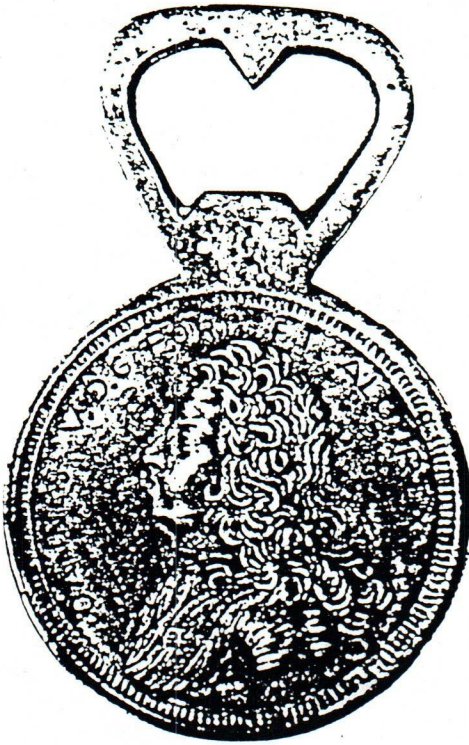
Our flea-marketing has gradually expanded to antiquing, and this part of the country is ideal for that. We especially like old wooden pieces, and have used a spool cabinet, a tool chest, and a couple of old wooden chests to store the openers. The rest are sorted and fastened together by types, and piled in baskets. They're all in the living room, easy to pick up and show to anyone who expresses a bit of interest, but not openly "displayed" as such.





PLEASE HELP ME!!

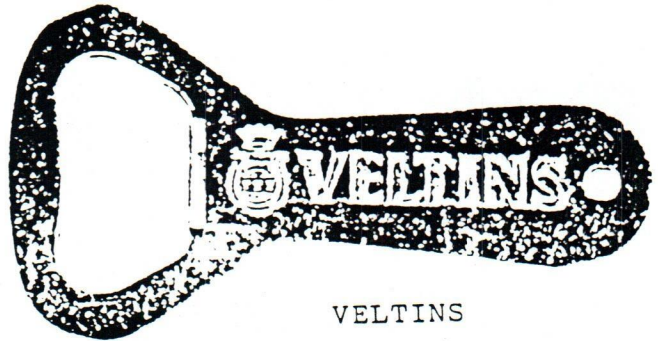
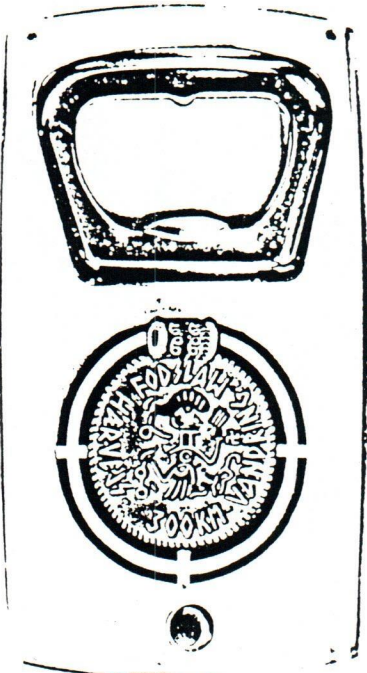
I have these foreign openers but do not know the translation or the country from which they came. If you know, please write. ART SANTEN



IOANNES V.D.G. PORT. FT. ALG. REX.



ST RAPHAËL QUINQUINA



VELTINS



BIEREN SLAG



SPÓŁDZIELNIA
"CHEMIMET"
RADOM

Cena det. 5.50.



SØNDERBORG ØL

4. ELDER'S GOOD BEER (U.S.?) A-2 (A-2/B-5)
A-4
43. READING BEER J.F. SNYDER / NUDE A-4
A-5
62. MILWAUKEE AVE. MALT & HOP SHOP 1117 MILWAUKEE AVE SO. MILWAUKEE,
WIS. PHONE 301 W A-5
63. NORTHERN MALT & HOP CO. 1520 FOND DU LAC AVE
64. PEERLESS MALT & EXTRACT CO. 6652 SO. HALSTED ST. CHICAGO, ILL. A-13
16. FRANK JONES ALE AND ANHEUSER-BUSCH BEERS. JOHN H. FIELD,
17. KEY TO SCHELLS DEER BRAND BEER NEW ULM, MINN A-17
36. SCHOONER BEER (GLASS OF BEER)
37. UHL'S BREWERY BETHLEHEM, PA. A-20
44. SEITZ BREWERY EASTON, PA. DRINK SEITZ BEER (SEE #7) A-21
82. BLUE RIBBON FALSTAFF BLACK HILLS BEVERAGE CO. DEADWOOD RAPID CITY
83. GOLDEN GLOW "BEER IT'S THE AFTER GLOW" (SEE #6)
84. HIGH LIFE BEER WESTERN MONTANA DIST. CO.
85. PRIOR BEER ATLANTIS IMP & DISTR.
86. PRIOR BEER TRINER CHICAGO, ILL.
87. REX CARLINGS ROCK SPRINGS KERN DIST. CO.
88. 2X BEER
89. "GOOD TASTE DEMANDS" WEHLE ALE AND LAGER A-29
68. WHEELING BOTTLE & CORK CO 2142 MAIN ST WHEELING W.VA. ALL
WHEELING 1955 BOTTLE SUPPLIES AND MALT / BARRELS & CROCKS
WHOLESALE PRICES OUR SPECIALTY WHEELING 1955 A-35
35. DRINK MILLER'S BEER JOHN HIPPE AGT. A-40
2. EXCELSIOR BEER SANTA CRUZ A-42
16. PORT WASHINGTON BREWING CO. "PREMO" A-49
1. GILT TOP BEER SPOKANE, WASH. A-50
1. "ARCADIA BREWING CO. ARCADIA, WIS." A-51
1. BLUE RIBBON BOUTS (BOXING MATCHES SPONSORED BY PABST) A-52
1. FOR HOME BREW USE B-WISE BRAND MALT-EXTRACTS-BEST TONIC FOR YOUR
HEALTH 55 N. 9TH ST PHONE WAL-6582 A-53
1. DRINK GOLD TOP OLD TOP" THATS THE BEER"
2. COMPLIMENTS OF EDDIE MAEIR (ED R. MAEIR EXTRA STRENGHT LIGHT BEER)
NOTE: THE TYPE A-53 WAS INCORRECTLY LISTED IN THE OCT. 1991 NEW
DISCOVERIES AS A TYPE B-68. B-1
28. RENO BREWING CO SIERRA BEER B-5
29. MONTANA BREWING CO ASK FOR MY FAVORITE
30. STORZ BR'G CO OMAHA NEB. STORZ TRIUMPH BEER THE "DELICIOUS ARTESIAN
BREW"/STORZ MALT EXTRACT THE BEST LIQUID FOOD AND TONIC(SEE #19)
31. ROYAL BREWING CO. KANSAS CITY, WESTON, MO. / OUR BRANDS ROYAL BEER
VIVA-TONE BREWMALT

(B-13/C-11)

B-13

- 86. BLUE RIBBON MALT & HOPS / ATLANTIC FOOD PROD. CORP.
- 87. F AND S BEER SHAMOKIN PA. / SAME
- 88. PRIMA COMPANY BEVERAGES CHICAGO (WAS PRIMA BREWING CO.)
- 89. SIMON PURE BEER BUFFALO, N.Y. WANT EAGLE CONVENTION 1917

B-14

- 163. DEMAND CARLING'S BEER
- 164. DRINK EUREKA BEER BUTTE MONTANA
- 165. HOSLER DRINK BRUIN A CEREAL BEVERAGE / COLUMBUS OHIO HOSLER'S FAMOUS OLD ENGLISH GINGER BEER

- 166. ASK FOR PHOENIX BOHEMIAN AND EXPORT

B-18

- 479. DRINK ANDACONDA BREWING CO'S BOTTLED BEER
- 480. DRINK BOHEMIAN / COMPLIMENTS OF H.W. HAGEN, PROP. STAR CITY BOTTLING WORKS
- 481. COMPLIMENTS OF BUTTE BREWING CO BUTTE, MONT.
- 482. DRINK CLINTON BREWING CO POINTER BEER (SEE #96)
- 483. DRINK HAGERSTOWN PILSENER BEER / J.J CLEMENCE PALMYRA, PA
- 484. DRINK HORLACHER'S PERFECTION NINE MONTH'S OLD (SEE (SEE #38 & #464)
- 485. THE MUESSEL BREWING CO SOUTH BEND IND.
- 486. SCHEIDT BROS. PORTERS PREMIUM BOTTLE BEER
- 487. KEY TO SCHREIBER BEER BUFFALO, N.Y.
- 488. COMPLIMENTS OF THE SUNSET BREWING CO WALLACE IDAHO (SEE #77)
- 489. TANNHAEUSER EXPORT GEORGE ROESCH/2435 N. SYDENHAM ST. PHILADELPHIA
- 490. WEST BEND BREWING CO'S LITHIA BEER WEST BEND, WIS

B-19

- 202. DRINK ACME BEER FOR HEALTH (SEE #1)
- 203. BERKSHIRE BREWING ASS'N PITTSFIELD, MASS. DRINK BERKSHIRE BEERS
- 204. CALL FOR EVANSVILLE BREWING ASS'N BEERS STERLING-RHEINGOLD-E.B.A. PALE ALE (SEE #81)
- 205. DRINK LION BREWING CO'S WURTZBURGER STYLE BEER
- 206. NATIONAL BREWING CO. NEW ORLEANS "IT SOARS ABOVE ALL" EAGLE BREW
- 207. RENNER'S AKRON BEER EASTERN ALES , WM OBERDOESTER CLEVELAND, O.

B-21

- 462. DRINK AKRON BREWING COMPANY'S WHITE ROCK EXPORT (SEE #2)
- 463. CENTLIVRE / NICKEL PLATE BEER
- 464. CONSUMERS FINE BEER
- 465. ASK FOR GAMBRINUS COLUMBUS O.
- 466. HAGERSTOWN BREWING COMPANY HAGERSTOWN MD. / KEY TO HAGERSTOWN BREWING COMPANY'S BOTTLE BEER (SEE #396)
- 467. (ASK?) FOR HAUENSTEIN'S OLD PROCESS LAGER
- 468: KEY TO HENNEPIN BRG. CO. MINNEAPOLIS, MINN USE IT (SEE #28)
- 469. CALL FOR JETTERS OLD AGE BOTTLE BEER
- 470. COMPLIMENTS OF JOHN KAZMAIER ALTOONA, PENNA. (SEE #45)
- 471. RED LODGE BREWING CO. RED LODGE, MONT. KEY TO MONTANA-BUD
- 472. KEY TO NATIONAL BREWING CO. BEER STEELTON PA (SEE #329)
- 473. KEY TO NORTHAMPTON BRG. CO'S TRU-BLU BEVERAGE
- 474. UHL'S CELEBRATED BEER
- 475. WEST POINT BREWING ASS'N. POINT, NEBR. / SOCIAL BEER

B-22

- 103. AMERICAN CEREAL BEVERAGE (PROHIBITION BY AMERICAN BRWY GREAT FALLS MT)
- 104. APPLETON BREWERY & ICE CO. APPLETON, MO.
- 105. COLD SPRING BREWING CO. LAWRENCE, MASS
- 106. FAMOUS BOTTLED BEER
- 107. GLUEK BRG. CO. MINNEAPOLIS KEY TO GLUEK ROOT BEER "GLIX" BEVERAGE

B-23

- 144. TOWN CLUB FOR THE BEER LOVER
- 145. WHITE ROSE BEER OLD FASHIONED LAGER (SEE #114)
- 146. YOUGH BREWING COMPANY (SEE #82 & #134).

C-11

- 36. DRINK BIG BEN BEVERAGES (SEE #3)

C-12

(C-12/E-13)

- 163. THE FRANKLIN BREWING CO. BEN BREW BEER 100% GRAIN PRODUCT(SEE #9)
- 164. ROCKERT'S ALE / CONVENTION WORCESTER 1936
- 165. TACOMA BREWING CO SAN FRANCISCO CAL / TACOMA BEER EAST OR WEST
BOTTLE 5 1/2%

C-13

- 277. BIRK BROS. BREWING CO. LINCOLN 7600 / BIRK'S SUPERB
- 278. BILLINGS OLD FASHION BEER
- 279. BLUE RIBBON BEER J.E. DYER & CO DISTRIBUTORS WEST 0268
- 280. PEERLESS BEER LA CROSSE, WISCONSIN (NO SPINNER - (SEE #83)
- 281. PILSENER'S P.O.C. (SEE #186)
- 282. STANDARD BREWING COMPANY, INC. ROCHESTER, N.Y. / OLD OX CART
STURDY ALE (SEE #193)
- 283. WISCONSIN SELECT LAGER BEER (SEE #200)

C-14

- 5. HORLACHER'S (SEE HANDBOOK-NOTES 2 DESIGNS. A 3RD FOUND)

C-17

- 66. ATLAS PRAGER BEER GOT IT?? GET IT!! (SEE #2)
- 67. LARGAY BREWING CO. WATERBURY, CONN. RED FOX ALE

-C-18

- 22. CROFT CREAM ALE BREWED IN THE OLD TRADITION

C-39

- 2. DIEHL, DEFIANCE, O. PAT. FEB. 6 1894

C-41

- 1. LITE (LOGO) 6637 / R ON A FOOTBALL HELMET

C-42

- 1. BUSCH BEER

C-43

- 1. EMIL SICK'S SELECT BEER (LARGE NUMBER 6)

D-1

- 40. MAIER / SELECT

D-2

- 13. MASS. BREW. CO. / BOSTON

D-3

- 22. ROESSLE BRWY / PREMIUM

D-17

- 1. ROLLING ROCK (6 STARS-PIC OF HORSE HEAD)

E-2

- 29. MONTANA BREWING CO GREAT FALLS MONT / SAME

E-3

- 72. PILSENER BEER THE BEER OF BEERS / E.ROBINSON'S SONS SCRANTON PA

E-4

- 312. BLUE ANCHOR BEVERAGES / SAME (SEE #214)

- 313. HITTLEMAN BREWERY BROOKLYN, N.Y / GOLDEN ROD REAL LAGER REAL TREAT

- 314. KNAPSTEIN BREWING CO. / KNAPSTEIN'S SELECT

- 315. MONARCH BEVERAGE CO PHONE CANAL 6500 / HI-DRY PALE GINGER ALE
(MONARCH BRG. CO. PROHIBITION PRODUCT)

E-5

- 89. SCHLITZ STRE CAFE STEAKS-MEALS-BEER 739 WEST POINT WEBR.

E-6

- 202. GOOD OLD KING COLE BEER UNIONTOWN, PENNA / SAME

E-7

- 60. KESSLER BREWING COMPANY

- 61. OLEAN BREWING CO. OLD DUTCH BRAND BEER

- 62. WEINHARD'S GOLD SEAL

E-8

- 92. HOME BREW CO. INDIANAPOLIS / COLUMBIA HOME BREW

E-9

- 116. COLUMBIA BREWERIES KRAUSENIZED / LAGER BEER ALT HEIDELBERG

E-10

- 216. FESENMEIER BREWING CO. HUNTINGTON, W.VA. / WEST VIRGINIA BEER-ALE

E-13

- 35. ENTERPRIZE BREWING CO FALL RIVER MASS/THE BEST OLD TAP ALE(SEE#5)

(E-14/M-30)

E-14

- 743. FESENMEIER BR'NGCO HUNTINGTON, W.VA./W.VA. SPECIAL W. VA. PILSNER
- 744. GENERAL BRADDOCK BRG.CO./OLD LAGER ,PILSENER INDIA PALE ALE(SEE279
- 745. RENNER YOUNGSTOWN, O. / BEER-ALE PHONE 44467 (SEE #433)
- 746. SALT LAKE CITY BREWING CO / DRINK AMERICAN BEAUTY BEER
- 747. STRAUB BREWERY ST.MARY'S PA / BREWERS SINCE 1872

E-17

- 8. SALT LAKE CITY BREWING CO / AMERICAN BEAUTY BEER

E-19

- 6. FITGER'S NATURAL BEER BREWED IN DULUTH NATURALLY BETTER(SEE#49

E-30

- 1. COMPLIMENTS SALT LAKE CITY BREWING CO. (RED ROSE)

F-5

- 27. USE BADGER MALT EXTRACT & HOPS/NATIONAL BEVERAGE DISTRIBUTING CO.
1134 NORTH WATER STR. MILWAUKEE, WISC (SEE #2 & #12)

F-6

- 75. FRANKLIN STORES CO. MALT&HOPS/281 SPRINGFIELD AVE 180 FERRY STREET
- 76. TAYLORS, MALT, HOPS, LIQUID MALT ALL BRANDS \$1.25 / 992 GENESEE ST.
WE DELIVER

F-9

- 13. PERU PRODUCTS/ARTIFICIAL ICE/ MADE FROM ARTESIAN WATER
(PERU, IL BREWERY)

F-14

- 2. ATLAS BREWING CO. CHICAGO / SAME (SEE #1)

G-12

- 17. HEIDELBERG BEER

G-14

- 5. BUDWEISER OF COLUMBIA, INC. (803) 799-5490 (BLACK)
- 6. SAME AS ABOVE (BLUE)
- 7. SAME AS ABOVE (GREEN)

G-28

- 8. BULLDOG BEER
- 9. FULL SAIL ALES (HOOD RIVER BRG. CO. HOOD RIVER, OREG. A MICRO)

G-30

- 1. BUD THE KING OF BEERS

G-31

- 1. BUDWEISER ILLINOIS LONGNECKS BUD LIGHT BEER

H-1

- 36. DRINK KUEBLER BEER-ALE-PORTER
- 37. KUEBLER BEER EASTON, PA

I-11

- 366. OLD READING BEST TASTING BEER IN TOWN / SAME (SEE #112)

I-17

- 284. GEO. WALTER BREWING CO. APPLETON WISCONSIN WISCONSIN'S MOST
ENJOYABLE BEER / ADLER BRAU BEER (SEE #198)

I-19

- 31. STERLING MELLOW BEER

I-22

- 29. CROFT CREAM ALE

K-12

- 1. LONE STAR BEER GOIN' GREAT! CLEAR ACROSS THE STATE/LONE STAR BEER
CERTIFIED QUALITY/CERTIFIED QUALITY (ON 5 1/2 10 1/4 WOOD BASE

L-9

- 4. CARLSBERG BEER (LABEL) (GREEN WOOD BOTTLE)

L-10

- 1. ALPEN BRAU (PIC OF CASTLE) / NOTHING FINER OUT OF A BOTTLE

M-9

- 4. STAG BLACK LABEL RED CAP ALE MILLER'S HIGH LIFE / BERKELEY
PACKAGE STORE 8522 AIRPORT RD. BERKELEY, MO. A.L. PROUHET PROP.
J. A. 1-1335

M-30

- 43. DUQUESNE AND 35 OTHER BEERS CHARLES J. GALLAGHER DISTRIBUTOR
320 E. LIBERTY ST. LANCASTER. PA. TEL 393-6800

- 44. FALSTAFF BEER(RED ON WHITE) - 16 -

JFO JAN. 1992

- (M-35/P-73)
3. EAGLE IN A / BUSCH GARDENS (GOLD ON BLACK)
M-35
6. 1968 JOS. SCHLITZ BREWING CO. MILWAUKEE, WIS. GENUINE DRAFT BEER/
M-38
25. 1860 (LOWENBRAU LION) (BLUE ON WHITE) / SAME (MILLER BREW. CO.)
M-43
3. MICHELOB DRY(SILVER)
M-63
1. BUDWEISER (PIC OF 3 GIRLS ON PROW OF BOAT WEARING BUDWEISER SWIM
SUITS LAYING ON A BUDWEISER BEACH TOWEL / SAME
M-91
1. MICHELOB DRY BEER / SAME
M-92
27. BIRCH BEER SHEPORAITIS PITTSTON, PA. PHONE 1937
N-9
4. LONE STAR BEER BREWED RIGHT-AGED RIGHT
N-50
2. LAKESIDE BREWING COMPANY DRINK POTOSI BEER ALWAYS GOOD
N-51
8. GRAND PRIZE BEER
N-56
1. DISTRIBUTORS OF SCHMIDT'S BEER COMPLIMENTS OF PALMYRA BEVERAGES
MFG. OF KIST BEVERAGES
N-67
1. KITTANING BREWING CO. KITTANING PA. / K.B.C. BEERS
N-68
1. STORZ BREWING CO. OMAHA, NEBR. THE ORCHID OF BEER (WRENCH, BOTTLE
OPENER-FIRST AID KIT-SCALE-SCALER-SCREWDRIVER-TAPE MEASURE
O-5
34. MENDOCINO BREWING CO. MAKERS OF RED TAIL ALE HOPLAND, CALIFORNIA
O-8
5. KINGSBURY PALE M'F'D BY MANITOWOC PRODUCTS CO MANITOWOC, WIS
6. "SPEC" RAMIES MALT STORE
O-13
1. MENDOCINO BREWING CO. / c 90 RD EK
O-14
1. STORZ
O-15
1. BLATZ
P-2
6. COMPLIMENTS OF MINNEAPOLIS BREWING CO "GILT EDGE"
P-6
6. ASHLAND BREWING CO BREWERS ASHLAND, WIS. WHITE RIBBON BEER
P-8
159. AMERICAN BREWING & MALTING CO / GREAT FALLS MONT.
160. BILLINGS BRG. CO DIAMOND BRAND
161. DICK BROS. QUINCY, ILLINOIS / SAME (SEE #9)
162. JUNG IRMAL / IRON MALT TONIC
163. WESTERN BREWERY CO. BELLEVILLE, -ILL. / "BOHEMIAN MALT EXTRACT"
P-15
4. FRIENDLY GRAIN BELT L. BEAL, INC
5. FRIENDLY GRAIN BELT LOUIS BEAL DISTR.
P-24
13. THE FECKER BREWING CO. TIGER HEAD & EXPORT BEER. / SAME
P-43
9. NATIONAL BREWERY CO. ST. LOUIS/GRIESE DIECK BROS. FINE BEER(SEE #8)
P-55
2. MORAND BROS BAVARIAN MALT EXTRACT WHOLESALE WINES & LIQUORS
331 SO. MAY STREET CHICAGO / SAME
P-73
3. F.D. RADEKE BREW CO. KANKAKEE, ILL.

(P-95/X-6)

P-95

1. BUTTE BOTTLERS SUPPLY CO. WHOLESALE & RETAIL BOTTLER'S SUPPLIES
MALT-HOPS-BOTTLES-CORKS-BARRELS 115 SO. MAIN ST. PHONE 549J

P-96

1. THE GUTSCH BREWING CO.

P-97

1. NATIONAL BREWERY CO.

P-98

1. OLDENBERG BREWERY AND ENTERTAINMENT COMPLEX FT. MITCHELL, KY.
(PIC OF BREWERY) WHITE ON BLACK

2. SAME AS ABOVE WHITE ON BLUE
3. SAME AS ABOVE WHITE ON BURGUNDY

Q-10

20. HEILEMAN'S OLD STYLE (LOGO) REACH FOR THE BEST

Q-12

18. BUD DRY DRAFT BUD DRY DRAFT (WHITE ON BLUE)
19. BUDWEISER (IN BOW TIE) NOTHING BEATS A BUD (WHITE ON RED)
20. LITE BEER LITE BEER (WHITE ON BLUE) (NOT #14)

Q-17

2. MILLER HIGH LIFE
3. STROH'S

Q-18

14. STOUTD'S REAL BEER (LIGHT BLUE ON DARK BLUE)

Q-19

4. BUSCH (PIC OF MOUNTAINS)

Q-24

2. STROH'S (RED ON YELLOW)

Q-27

1. BUD LIGHT BEER

Q-28

1. BUDWEISER (IN BOW TIE) KING OF BEERS (EAGLE IN A)
2. COORS
3. MICHELOB BEER (EAGLE IN A)
4. MILLER HIGH LIFE

Q-29

1. COORS LIGHT BEER (WATERFALL LOGO)

Q-30

1. MILLSTREAM BREWING CO. AMANA, IA 52203
2. MILLSTEAM (PIC OF MILL) BREWING CO AMANA, IOWA

Q-31

1. BUD DRY DRAFT (BROWN)
2. BUD KING OF BEERS (BROWN)
3. BUD LIGHT (BROWN)

Q-32

1. MILLER GENUINE DRAFT (BROWN)

Q-33

1. MILLER COLD FILTERED GENUINE DRAFT LIGHT (LABEL)

Q-34

1. EAGLE IN A (RED)

R-13

1. MENDOCINO BREWING CO. (BRONZE)

X-5

1. JUST FOR OPENERS 12TH ANNUAL CONVENTION DURHAM, NC APRIL 1990
JUST FOR OPENERS (AM. FLAG) J.F.O. (SILVER RIGHT HANDED OPENER)

X-6

1. JUST FOR OPENERS 13TH ANNUAL CONVENTION RTP NORTH CAROLINA APRIL
1991 JUST FOR OPENERS (AM. FLAG) J.F.O. (GOLD LEFT HANDED OPENER)

I SINCERELY THANK THE CONTRIBUTORS WHO MADE THIS LISTING POSSIBLE.
OUR MEMBERS APPRECIATE YOUR SHARING THIS INFORMATION WITH THEM.
YOUR NAMES WILL APPEAR IN THE APRIL ISSUE AS WILL COMMENTS ABOUT
"UNLISTED/NEW ADDITIONS" . WISHING YOU THE BEST COLLECTING IN 1992.