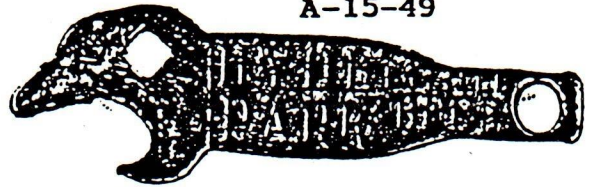


# Just For Openers



JAN 1993  
ISSUE 57

6126 McPHERSON, ST. LOUIS, MO 63112

(314) 863-6798

HAPPY NEW YEAR TO ALL

THE CONVENTION INFORMATION IS ON PAGE 8 . WE EXPECT A LARGE TURNOUT. THE CAP LIFTER WAS PATENTED IN 1893 AND THIS WILL BE IT'S 100th BIRTHDAY. MAYBE EVERYBODY COULD BRING AN OPENER WITH THE 1893 PATENT ON IT. IT WOULD ALSO BE FUN IF EVERYBODY WOULD BRING A HOMEMADE OUTLANDISH CAP LIFTER. ANY OTHER SUGGESTIONS? THIS IS ALSO THE 15th YEAR OF THE JFO. LETS CELEBRATE

MANY THANKS TO JOHN STANLEY WHO COMPILED THE ADDITIONS LIST AND TO JANICE JARRELL WHO ASSISTED HIM. THEY DID A GREAT JOB.

## ED KAYE SEZ

A SINCERE THANK YOU TO ALL WHO TOOK THE TIME TO SEND CARDS & LETTERS AND WHO PHONED TO WISH ME A SPEEDY RECOVERY. I AM NOW 80% FUNCTIONAL.

## BUY - SELL - TRADE

FOR SALE: 10 DIFFERENT LOCAL OPENERS, \$7.50.

CARL JANTOS 7025 KEVIN DR. BETHEL PARK PA 15102

TRADE:HAVE OPENERS FOR SALE OR TRADE, FOR E'S I NEED. SEND FOR LIST.  
LARRY MOTER ROUTE 1 BOX 310 WOODFORD, VA. 22580; TEL. 804 448-3928

WANTED: 0-5 (STARR X) OPENERS. WILL BUY OR TRADE FOR: BRAUMEISTER, LONE STAR, PABST, PEARL AND REGAL PALE BEER OPENERS. ALSO, BEBA COCA COLA, BIG BILL, PELCO, FRIGIDARE, KELVINATOR, RED ROCK COLA, AND DRINK SQUIRT SOFT DRINK. STEVE OWEN, 5409 CARMEL CT. TYLER, TX. 75703 (903) 581-7458

DEAR FRIENDS AND MEMBERS,

THIS LETTER IS TO LET YOU KNOW THAT MY OPENER TRIVIA WILL NOT APPEAR IN THIS ISSUE OF THE JFO. I DO NOT WANT YOU TO THINK THAT I HAVE GIVEN UP DOING IT. YOU HAVE BEEN SO SUPPORTIVE IN THE LAST 6 YEARS, AND WITHOUT YOUR HELP I WOULD NOT HAVE SUCCEEDED.

AS SOME OF YOU ALREADY KNOW, I WAS DIAGNOSED WITH LEUKEMIA LAST SEPT. FOR THE LAST SEVERAL MONTHS I HAVE BEEN IN AND OUT OF THE HOSPITAL FOR CHEMOTHERAPY, AND I AM ABOUT TO GO IN THE HOSPITAL AGAIN. MY TREATMENT SHOULD BE ENDING SOON, AND HOPEFULLY MY ILLNESS WILL REMAIN IN REMISSION AND I CAN LIVE A RELATIVELY NORMAL LIFE. I PLAN TO RESUME OT WHEN I AM ABLE.

I WANT TO THANK EVERYBODY WHO HAS CALLED OR WRITTEN ME WITH YOUR SUPPORT BECAUSE I AM SURE I WILL FORGET SOMEONE I WILL NOT ATTEMPT TO LIST EVERYONE BY NAME. I WANT EACH OF YOU TO KNOW HOW MUCH YOUR SUPPORT HAS HELPED ME THROUGH THIS CRISIS AND THAT I LOVE YOU ALL. BILL MCKIENZIE

## ANHEUSER-BUSCH OPENER UPDATE

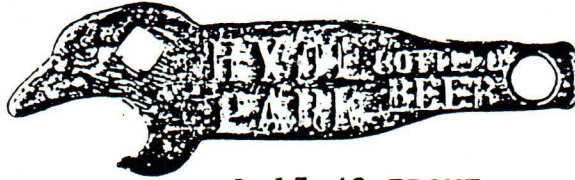
THIS MONTH I AM FEATURING THE ST. LOUIS HYDE PARK OPENERS ON PG. 2 & 3. LAST MONTH I FEATURED THE AB OPENERS. THIS IS AN UPDATE FROM THIS YEARS ADDITIONS LIST. LAST MONTH I MISSED 2 LISTINGS; A-13-16, B-2-31. A-13-16; A-42-17; B-2-31; B-18-493; B-18-494; B-21-477; B-55-19; E-5-90; E-5-91; E-14-748; F-3-14; L-9-5; M-29-41; M-30-45; M-38-7; M-70-6; M-91-2; N-27-6; N-40-26; P-19-38; P-19-42; P-25-8; P-51-40; P-82-7; Q-8-29; Q-12-21; Q-12-22; Q-12-23; Q-12-24; Q-18-15; Q-18-16; Q-18-17; Q-18-18; Q-31-4; Q-31-5; Q-31-6; Q-31-11.



**HYDE PARK OPENERS**

THIS IS A LISTING OF ALL HYDE PARK, ST LOUIS MO, OPENERS. 19 ARE LISTED. I DO NOT BELIEVE THE NO( NO OPENER) OPENERS EXIST. IF ANYONE THINKS THEY HAVE THEM, PLEASE WRITE TO ME. I AM MISSING THE E-5-64. WHO HAS IT?

A-15-9  
(NO SEE 49)



A-15-49 FRONT

A-15-38  
(NO SEE 49)

A-15-49

B-21-34  
-35



A-15-49 REVERSE

E-5-9  
-64

E-14-156  
(NO SEE 514)

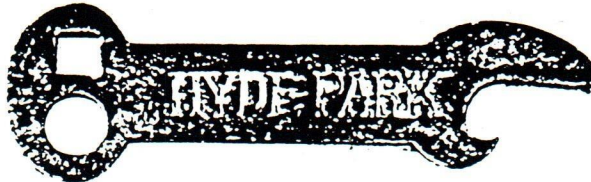
E-14-157  
-514

I-4-18

I-5-10

I-6-88

(NO SEE  
I-5-10)



B-21-34

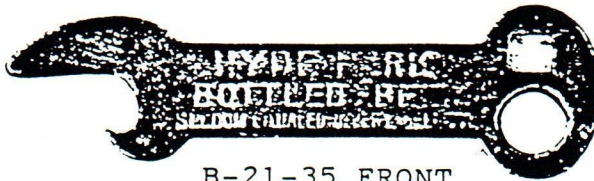
E-14-157 DIPPED TOP

J-5-58

J-6-28

(NO SEE  
J-5-28)

M-60-2

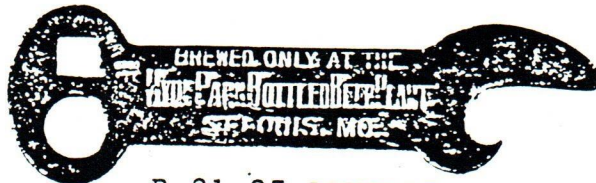


B-21-35 FRONT

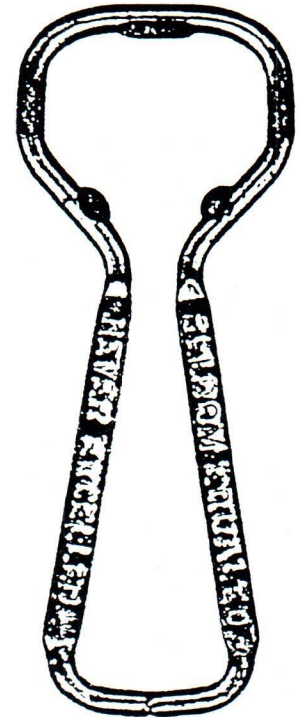
O-4-5

-6

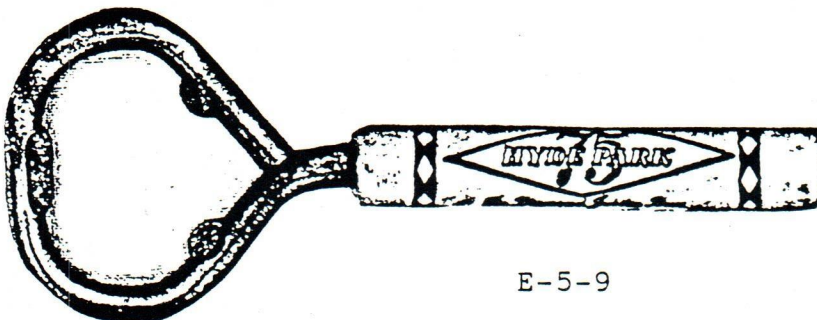
-19



B-21-35 REVERSE



E-14-57 ROUNDED TOP



E-5-9





I-4-18 (STEEL & COPPER)



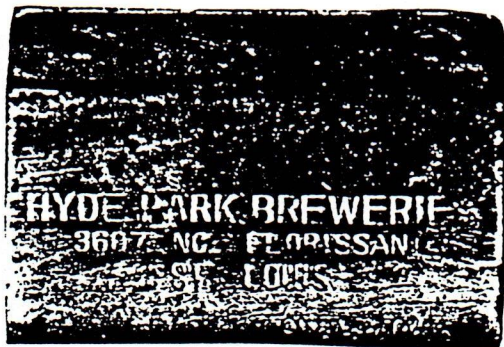
I-5-10



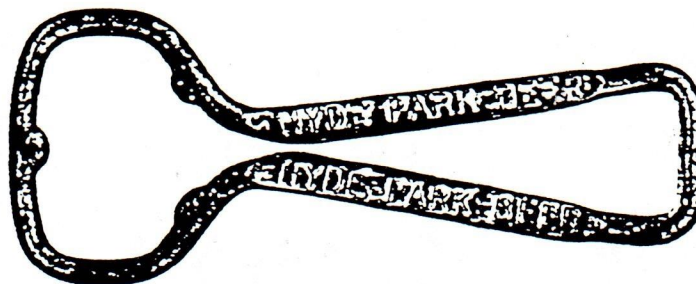
J-5-58 (STEEL & COPPER)



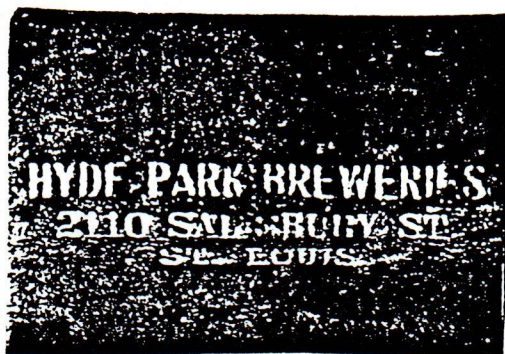
M-60-2



O-4-5



E-14-514



O-4-6



O-4-19

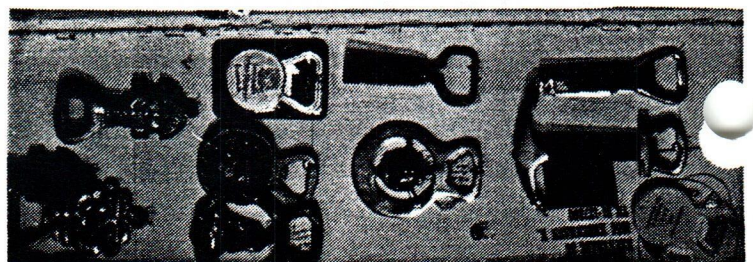
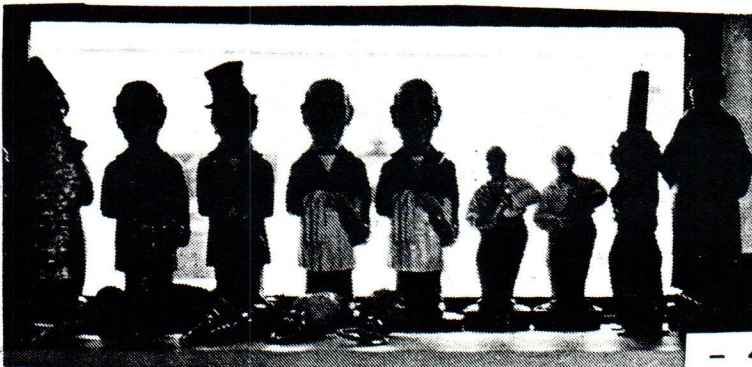
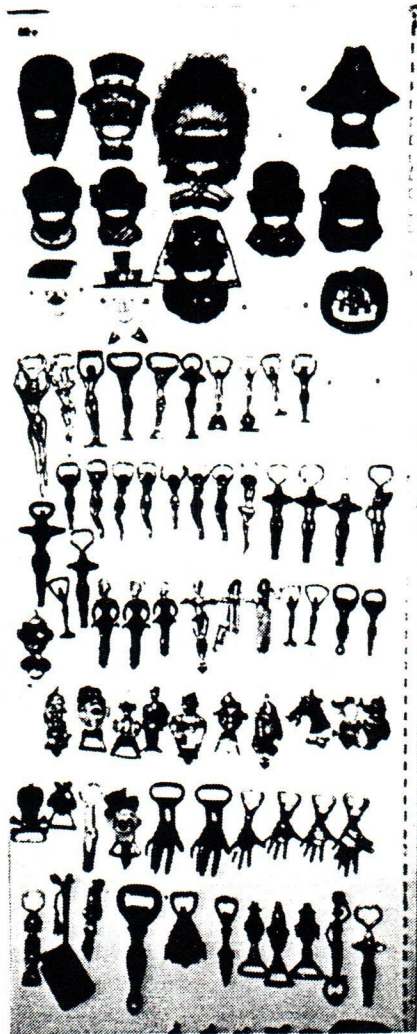
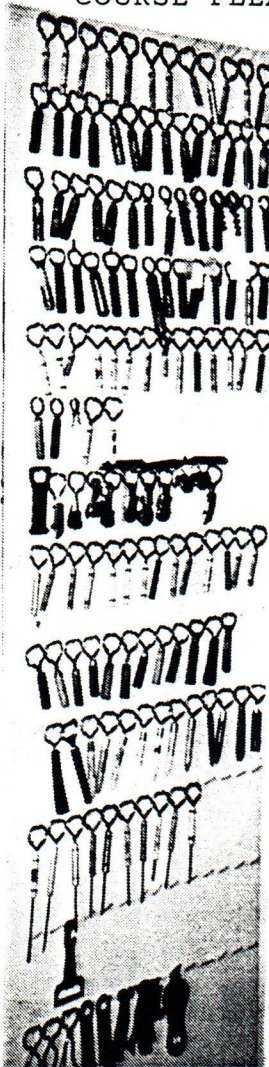


## OPENER COLLECTOR OF THE MONTH

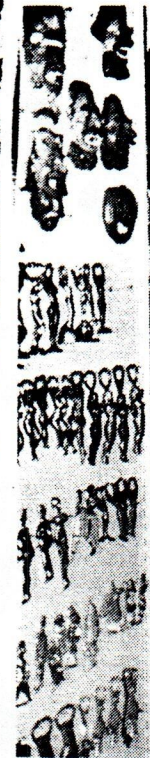
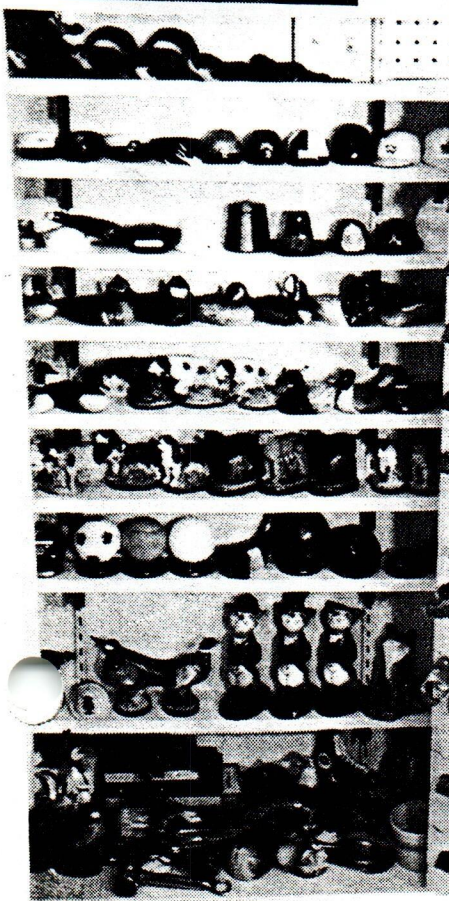
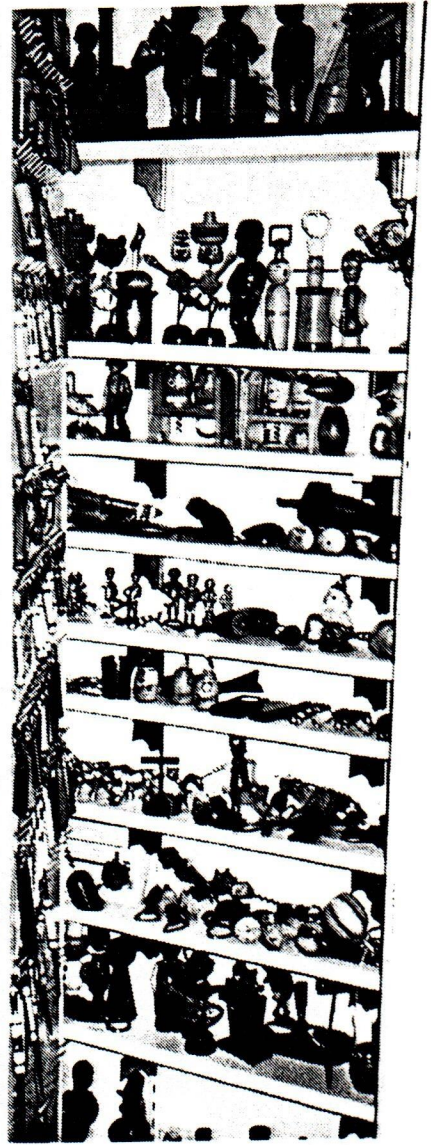
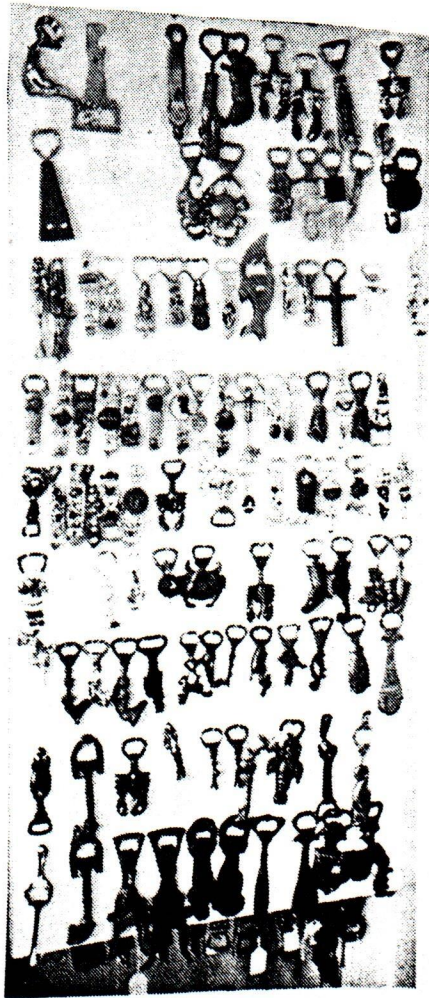
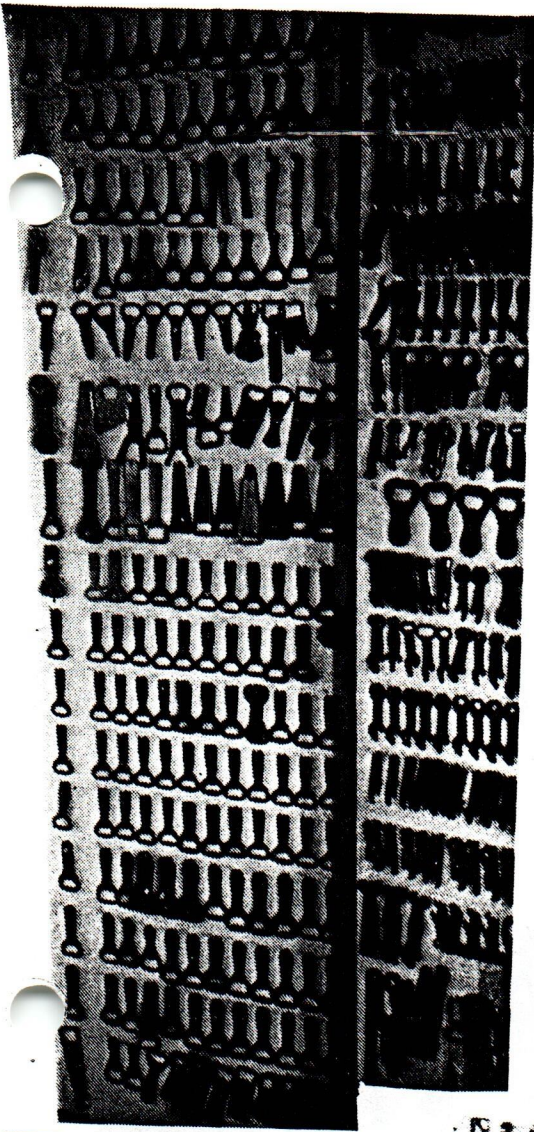
### DALE DECKERT

I HAVE BEEN ASKED MANY TIMES HOW I GOT STARTED COLLECTING BOTTLE OPENERS. SOMETIME BETWEEN 1946 AND 1950 I PICKED UP A VERY UNUSUAL BOTTLE OPENER FOR MY OWN USE. I NOTICED HOW MUCH ART WORK, DESIGN AND CRAFTSMANSHIP WENT INTO THIS ONE OPENER. I DECIDED RIGHT THEN IT WOULD BE FUN TO SEE IF I COULD FIND OTHER UNUSUAL OPENERS. I DIDN'T GO TO A LOT OF PLACES AT FIRST BUT AS THE YEARS WENT BY AND I RETIRED, MY WIFE AND I STARTED GOING TO ANTIQUE STORES AND FLEA MARKETS. WE NEVER FOUND MANY AT GARAGE SALES. NOW I HAVE OVER 15,000 OPENERS. IT IS VERY INTERESTING TO LOOK OVER THE YEARS OF HISTORY OF BOTTLE AND CAN OPENERS. I HAVE COLLECTED ALL KINDS. MY WIFE HAS A COLLECTION OF 1,200 PENCIL SHARPENERS. MANY OF WHICH ARE VERY UNIQUE. WE ARE BOTH RETIRED, SO WITH OUR COLLECTING IT GIVES US MANY NEW PLACES TO GO. WE LIKE SIGHT SEEING, GOING TO NEW RESTAURANTS AND OF COURSE FLEA MARKETS.

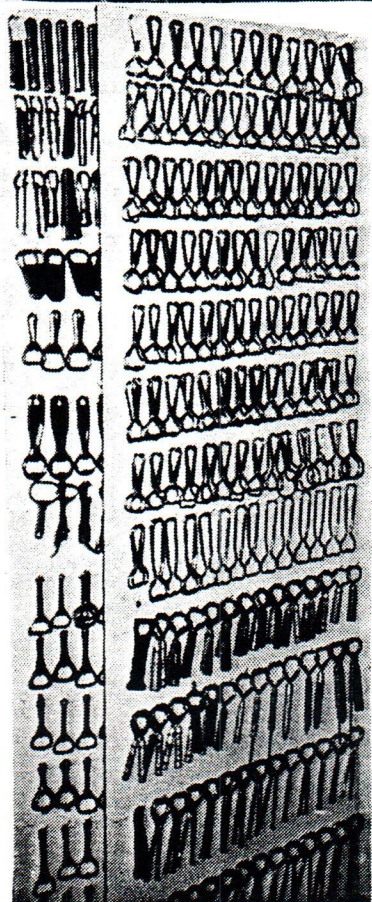
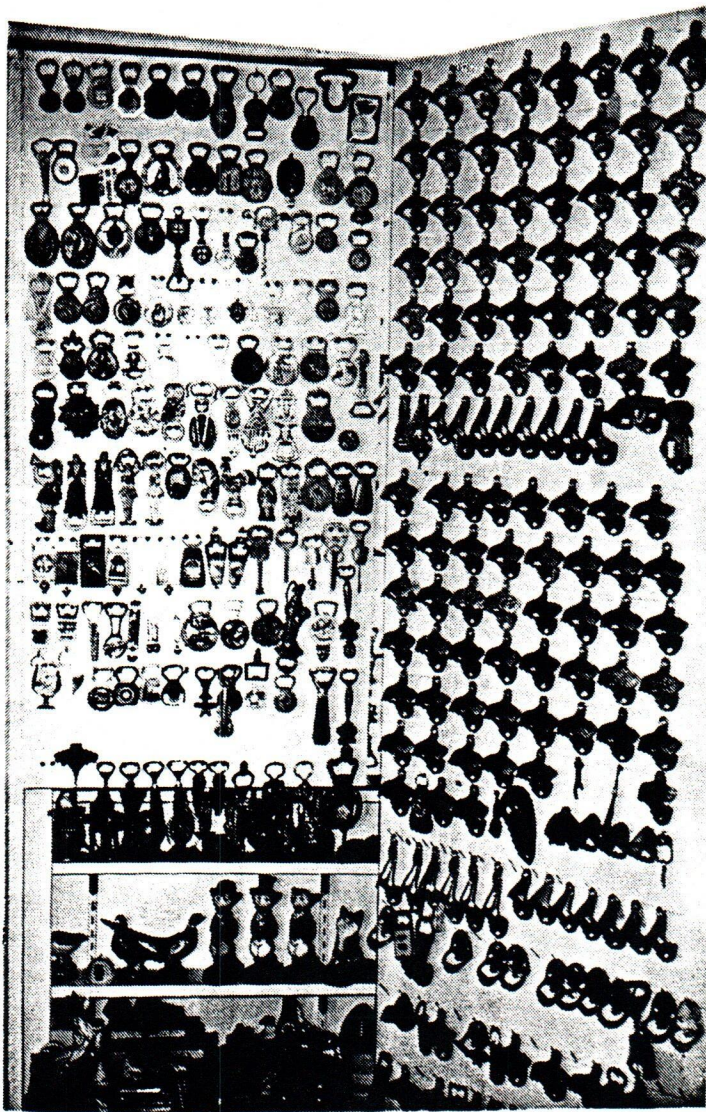
DALE DECKERT













**JANUARY 1993 ADDITIONS TO THE HANDBOOK, ITS SUPPLEMENT &  
JAN 1990 & JAN 1991 & JAN 1992 ISSUES OF JFO  
(COPYRIGHT JAN 1993 ED KAYE)**

**A-1**

- 79. MONTANA BREWING CO. MY FAVORITE (SEE #16)
- 80. THE SMITH BREWING CO. YOUNGSTOWN, O. DRINK TIP TOP BEER

**A-3**

- 33. ROYAL MALT EXTRACT 1225 VINE ST. CINCINNATI, OHIO.

**A-4**

- 44. "AUGUSTINER" COLUMBUS, OHIO.
- 45. RENNERS BELL 92 AUTO 3292

**A-5**

- 63. DARES ALES
- 64. JOS. FILIPKOWSKI SOUTH SIDE MALT & HOP CO 707 LINCOLN AVE MILWAUKEE
- 65. STONE MALT CO. MALT - HOPS - SUPPLIES 519 E. 5TH ST. DAYTON, OHIO

**A-7**

- 30. BUTTE BOTTLERS SUPPLY CO. 115 SO. MAIN ST. BUTTE, MONT. PHONE 549-J  
(SEE #20)
- 31. ONEIDA BREWING CO.
- 32. ROSE BUD BEER

**A-9**

- 37. BUTTE BOTTLERS SUPPLY 112 SO. MAIN ST. PHONE 2522 (SEE A-7-20 & A-28-30)
- 38. EAGLE BREWING CO. S. ZYNDA PROP. / DRINK JUNEAU FAMOUS BEER

**A-13**

- 18. E. H. GAMBLE ALE & BEER BATAVIA, N.Y.
- 19. GUND'S BEER, FRANK NEENAN EAST DUBUQUE, ILL.
- 20. HOSTER'S FAMOUS COLUMBUS BEER. MACKENZIE & CO.  
PORT OF SPAIN, TRINIDAD, B.W.I. WHOLESALE DEALERS
- 21. INDEPENDENT BREWING AND MALTING CO. DAVENPORT, IOWA  
OLD BLACKHAWK BOTTLE BEER
- 22. DRINK VA. BREWING CO'S PURE BEERS, ROANOKE, VA.
- 23. WALD-ROSE WORLD'S BEST MALT 218 FLATBUSH AVE.  
4222-5TH AVE. BROOKLYN, N.Y.

**A-15**

- 51. COOK'S BEER EVANSVILLE, IND.
- 52. CRYSTAL ROCK BEER (SEE #3)
- 53. LEICHT'S CELEBRATED BOHEMIAN BEER NEWBURGH, N.Y.

**A-16**

- 11. DOERPHOLZ BOTTLING CO. LAGER, ALE AND PORTERS  
512 HIGH ST. HOLYOKE, MASS.

**A-17**

- 36. DRINK SCHOONER BREW IN BOTTLES (GLASS OF BEER)  
(CORRECTION TO JAN 92 ADDITIONS)
- 38. SCHMULBACH BREWING CO. WHEELING, W.VA.

**A-21**

- 90. DRINK FALSTAFF BEER COMPLIMENTS BILL WHITE PHONE 2682 106 NO. MADISON
- 91. GETTELMAN SCHLITZ KESSLER CANADA DRY YELLOWSTONE DISTRIBUTING MILES CITY
- 92. LONE (STAR) STAR THE DOUBLE MELLOW DOUBLE AGED BEER
- 93. PIEL'S BEER ERNEST JAMBOR INC. 1208 WALNUT ST. PHILADELPHIA
- 94. P.O.C. BEER UNION BEER DIST. PHONE 6-1391 321 W. 21ST ST. (SEE #66)



- 95. RUPPERT'S KNICKERBOCKER BEER GUS G. BUSE CORP.  
DISTRIBUTOR BUFFALO PHONE JEF-6340
- 96. SCHLITZ AND KB BURTON BEVERAGE OTTUMWA, IA
- 97. STANDARD WIRTHBRU BEER NATION'S FINEST

**A-23**

- 7. SCHLITZ & PICK ALE THIS OPENER WILL OPERATE BEST ON

**A-28**

- 37. FORT SCHUYLER ALES ON DRAUGHT AND IN BOTTLES
- 38. DRINK HEIM BRAU PURE & WHOLESOME
- 39. DRINK MCINNERY'S SPECIAL BREW.
- 40. BOTTLER PABST MILWAUKEE BEER, KARL WOLFF'S CAFE,  
150 STATE ST. SCHENECTADY, N.Y.
- 41. DRINK VA. BREWING CO'S PURE BEERS, ROANOKE, VA.

**A-29**

- 69. DRINK BROADWAY BREWING CO'S IMPERIAL BEER  
A STERILIZED BEER IN STERILIZED BOTTLES
- 70. REINE CO. S.F. USE BEST EVER MALT & HOP SYRUP / SAME (SEE #41)

**A-34**

- 5. READING BEER A.E. BAIR, AGT. HAGERSTOWN, MD.

**A-35**

- 36. TANNHAEUSER BEER T. J. RATTIGAN'S

**A-42**

- 17. BUDWEISER BAR, COMPLIMENTS OF PEHL & KUECK, SEDALIA, MO.
- 18. BUFFALO BREWING COMPANY. (SEE #1 & #2)
- 19. DON'T BE A FISH DRINK GOLDEN GRAIN BEER

**A-43**

- 5. ALWAYS DRINK BOZEMAN BEER
- 6. BRITANNIA BEER

**A-44**

- 5. ANACORTES SUPPLY CO MALT SYRUP, SUPPLIES ANACORTES WASH

**B-1**

- 29. KEY TO BURKHARDT'S SELECT BEER AKRON, OHIO
- 30. LIBERTY BREWING CO. TAMAQUA, PA.
- 31. NORTHWESTERN BREWERY BULLFROG NORTHWESTERN BREWERY PHONE LINCOLN 2100

**B-2**

- 42. LONE STAR BREWING CO. SAN ANTONIO, TEX. DRINK "SANTONE" BEER

**B-5**

- 32. COMPLIMENTS OF THE DEER PARK BREW. CO. PORT JERVIS, N.Y. /  
BREWERS OF DEERPARK LAGER BEER ALE AND PORTER
- 33. E. H. GAMBLE ALE AND BEER BATAVIA, N.Y.

**B-6**

- 20. FEIGENSPAN'S SELECT BOTTLING BEERS & ALES / NEWARK N.J.
- 21. HASTINGS BREWING CO. HASTINGS NEBR. /  
PRAIRIE PRIDE BEER PERSONAL LIBERTY BREW (SEE #14)

**B-13**

- 90. "DOT'S VOT LOOIE USES" BLUE RIBBON MALT  
222-224 DIAMOND ST. PITTSBURGH, PA.
- 91. INSIST ON BLUE RIBBON MALT 222-224 DIAMOND ST. PITTSBURGH, PA.
- 92. BLUE RIBBON PRODUCTS CO. READING, POTTSVILLE, LANCASTER,  
YORK, PA. / TIP-TOP EXTRACTS MALT FOOD PRODUCTS (SEE #45)
- 93. SAY EDELWEISS BEER
- 94. GARDEN CITY BREWERY / DAISY BEER



- 95. DRINK JAX LAGER BREW
- 96. COMPLIMENTS NEVIN-FRANK CO.
- 97. SILVER SPRAY BEER

**B-14**

- 167. COMPLIMENTS OF DUBOIS PRODUCTS & COLD STORAGE CO. DUBOIS, PA.
- 168. DRINK EUREKA PURAQUA PRODUCTS & ICE CO. SMITHTON, PA.
- 169. PULL FOR HAMMS BEER K&S CO
- 170. K&S BREWING CO PULL FOR PREMONA
- 171. KRUEGER BEER - ALE NEWARK, N.J. (WAITER)
- 172. PREMIER BREWING CO. LTD, BRANDON
- 173. SPRAY BEER
- 174. DRINK WESTMORELAND BEER SUTERSVILLE, PA.

**B-16**

- 4. HABERLE CONGO SYRACUSE / SAME
- 5. OWL BRAND MALT SYRUP / FRED R. BURR 114 ELEANOR ST

**B-17**

- 11. DRINK MOERLEINS BARBAROSA / THE FINEST BOTTLED BEER BREWED

**B-18**

- 491. DRINK ADLER-BRAU
- 492. KEY TO ANGELES BREWING AND MALTING COMPANY PILSENER BEER
- 493. DRINK ANHEUSER BUSCH BLUE LABEL BOTTLED BEER /  
THE JOSEPH ZAPH CO. JACKSONVILLE, FLA.
- 494. KEY TO ANHEUSER BUSCH OR BUDWEISER /  
STANDARD BOTTLING WORKS SILVERTON, COLO. JNO. B. & JOE ORELLA, PRO
- 495. DRINK BARTL'S BEER LACROSSE, WIS.
- 496. THE BATTLE CREEK BREWING CO.
- 497. BEAVER VALLEY BREWING CO. KEY TO YALE EXPORT ROCHESTER, PA.
- 498. BERG AND SON QUALITY MALT
- 499. KEY TO BEVERWYCK LAGER W.H. VAN BENTHUYSEN GLEN FALLS, N.Y.
- 500. KEY TO BLUEFIELD BREWING COMPANY'S BEER
- 501. BRUNOLA DISTRIBUTING CO. WHEELING, W. VA. / MALT & HOPS
- 502. DRINK CAPITAL CITY BREWING CO'S BEERS THE TASTE TELLS
- 503. CITY SUPPLY CO. 2008 1/2 HEWITT AVE. MAIN 610 /  
MALT-HOPS-SYRUP EVERETT, WASH.
- 504. KEY TO DOTTERWEICH'S GILT EDGE LAGER O.B. OLEAN, N.Y. (SEE #172)
- 505. KEY TO EDELBRAU BEER LORENZ ILL CO. DES MOINES, IOWA.
- 506. FINK'S OLD RELIABLE
- 507. FLOWER CITY BREW'G CO. ALES BEERS ROCHESTER, N.Y.
- 508. FLOWER CITY BREWING CO. ALES BEERS ROCHESTER, N.Y.
- 509. FLOWER CITY BREWING CO MALTOP A-BEER ACME ALE
- 510. DRINK HAMM'S MASTER BREW ST. PAUL, MINN. /  
OXFORD CLUB PALE DRY GINGER ALE
- 511. DRINK THE GENUINE IRON BREW MADE BY WILL J. CRAWFORD SEDALIA, MO.
- 512. JAMESTOWN BREWING CO. DRINK CHAUTAUQUA BREW JAMESTOWN, N.Y.
- 513. KALAMAZOO BREWING CO. KALAMAZOO, MICH. CALL FOR THE BREW FROM KALAMAZOO
- 514. KEY TO LANGS BEER COWAN BROS. JAMESTOWN, N.Y.
- 515. MT. VERNON BEER THE BEST FROM THE BEST
- 516. NATIONAL BEVERAGE DISTRIBUTING CO. MILWAUKEE /  
BADGER MALT EXTRACT & HOPS
- 517. NATIONAL SAGINAW, MICH. KEY TO THE BEST BEER
- 518. DRINK OLD MANHATTAN /  
EAGLE SOFT DRINK CO PHONE 27W SOUTH MILWAUKEE, WIS.
- 519. COMPLIMENTS OF PFEIFFER SALES CO. PRIMA BEVERAGES.
- 520. KEY TO PILSENER'S EXTRA PILSENER BOTTLED BEER (SEE #294)
- 521. SCHMIDT BOTTLING WORKS HANOVER, PA. (SEE A-28-34 & B-21-136)



- 522. KEY TO SIMON PURE BEERS BUFFALO, N.Y. (SEE #72) (2 VAR)
- 523. COMPLIMENTS OF THE SUNSET BREWING CO. WALLACE, IDAHO (SEE #77)
- 524. KEY TO SUPREME BEER
- 525. WILLOW SPRINGS BREWING CO. OMAHA, U.S.A. /  
DRINK STARS & STRIPES BOTTLED BEER

**B-19**

- 208. BLUE RIBBON PRODUCTS CO. MALT & HOPS /  
PHONE 3293 421 HAMILTON ST. ALLENTOWN, PA.
- 209. KEY TO THE BEERS OF QUALITY, DUBOIS, PA.
- 210. FLOWER CITY BREWING CO MALTOP A-BEER ACME ALE (SEE #10)
- 211. GERST'S SODAS ARE BEST / TRY OUR COLA PHONE M. 2578
- 212. DRINK HORNUNG'S CELEBRATED BEERS PHILA. / WHITE BOCK BEER  
(SEE #50 & #66)
- 213. THE LIMA BREWING CO. LIMA, O. / DRINK LIMA BEER (SEE #21)
- 214. MOERSCHEL'S SPECIAL BEER SEDALIA, MO. NO 807 (SEE #68)
- 215. NATIONAL IS THE BETTER BEER
- 216. PFAFF'S BEER
- 217. UNION BREWING CO. PEORIA, ILL / BOHEMIAN BOTTLED BEER

**B-21**

- 476. ABERDEEN BREWING CO. GOLDEN AGE
- 219. THE AMERICAN BREWING CO. PEKIN / OLD PURE CULTURE LAGER.  
(CORRECTION TO HANDBOOK)
- 477. BUDWEISER
- 478. CLEARFIELD BRG. CO. DRINK JOE'S EXPORT CLEARFIELD, PA.
- 454. DOTTERWEICH BREWING CO. FAMOUS LAGER BEER OLEAN, N.Y.  
(2 VAR) (CORRECTION TO JAN 92 ADDITIONS)
- 479. DUBOIS BUDWEISER BEER (SEE #238)
- 480. ELK RUN BREWING CO. PUNXSUTAWNEY, PA.
- 481. B. FINK MALT & HOP PRODUCTS PHONE 302-J 411 E. 3RD ST. BETHLEHEM, PA.
- 482. FORT SCHUYLER ALE UTICA, N.Y.
- 483. ASK FOR FRANKLIN BREWING CO'S BEN BREW
- 484. DRINK GOETZ COUNTRY CLUB BEER / SAME
- 485. HAEFNER BRWY. LANCASTER, PA.
- 486. THE INDEPENDENT BRG CO SEATTLE, WASH /  
OLD GERMAN LAGER (SCRIPT) ES-GIEBT-KEIN-KOPEWEH
- 487. HYDE PARK BREWING CO. HYDE PARK, PA. DRINK PURITY BEER (SEE #36)
- 488. KEY TO KALISPELL MALTING & BREWING CO. BEST BEER
- 489. KRUG CABINET BEER FRITSON AND KRUSE MACON, NEB.
- 490. LEWISTOWN BRG CO. MONT. CALL FOR LEWISTOWN GESUNDHIET BEER
- 491. KEY TO NATIONAL THE BEST BEER SAGINAW, MICH. /  
DRINK LEADER BEER (SEE #184)
- 492. KEY TO OLEAN BREWING COMPANY OLEAN N.Y. (SEE #188)
- 493. DRINK OWYHEE BEER MADE IN SILVER CITY, IDAHO
- 494. PADUCAH BREWERY CO. INCORPORATED / TEE - - IT HAS THAT TASTY TASTE
- 495. PARK BREW CO. CALL FOR PARK MALT TONIC WINONA, MINN. /  
MAKES YOU EAT HELPS YOU SLEEP
- 496. KEY TO PITTSBURGH BREWING CO'S "TECH BEER " /  
PITTSBURGH BREWING CO'S P.B. CO. SPECIAL (SEE #194)
- 497. ROBT PORTNER BRG CO C.S. JOHNSON AGT. ROANOKE, VA. /  
DRINK HOFBRAU (EXPORT BEER) (SEE #356)
- 498. SCHLITZ IN BROWN BOTTLES
- 499. THE TOWNSEND BREWERY TOWNSEND, MONT.
- 500. DRINK WESTMORELAND BREWING CO'S BEER SUTERSVILLE, PA.



- 501. RECOMMENDED BY W. VA. BREWING, CO. HUNTINGTON, W. VA.  
KEY TO FESENMEIER BREW (SEE #317)
- 502. WIDMANN BREWERY LOCK HAVEN, PA.

**B-22**

- 108. AMERICAN CEREAL BEVERAGE (NEAR-BEER)
- 109. FLOWER CITY BREWING CO. MALTOP A-BEER ACME ALE
- 110. KEY TO HAMM'S FAMOUS BEERS ST. PAUL / DIGESTO MALT TONIC
- 111. F.G. KLEIN CO. BURLINGTON, WIS.
- 112. LORELLI KESSLER BREWING CO.

**B-23**

- 147. DRINK CINCINNATI CREAM
- 148. GOLDCREST 51 (CIRCLE) BEER
- 149. GOLDEN GLOW SPECIAL BREW
- 150. DRINK GRAF'S "THE BEST WHAT GIVES"
- 151. JOHN KUHLMANN BREWING CO. ELLENVILLE, N.Y.
- 152. LABOR TEMPLE ASSN. MALT STORE 306 E. MADISON EAU CLAIRE, WIS
- 153. PEERLESS YEAST PEERLESS MALT 100% PURE MAIN 8483
- 154. HENRY G. SELL "SELECT BRAND MALT" BEVERAGE SUPPLIES  
FILL 2675-W 3243 BAILY AVE
- 155. SUNSET MERCANTILE CO.
- 156. STAR UNION PRODUCTS CO. PERU, ILL.

**B-24**

- 101. YOUGH BREWING CO. CONNELLSVILLE, PA.
- 102. D.G. YUENGLING & SON, INC. POTTSVILLE, PA. /  
DRINK YUENGLING FINE BEER (SEE #36)

**B-31**

- 7. OLD FASHION BEER / BILLINGS BREWING CO.

**B-35**

- 18. BUTTE BOTTLERS SUPPLY 112 SO. MAIN PHONE 2522 (SEE A-7-20 & A-28-30)

**B-42**

- 9. RUBSAM & HORRMANN BREWING CO. STATEN ISLAND, N.Y. /  
R&H STANDS FOR QUALITY SUPREME BREWS (SEE #1)

**B-43**

- 2. KEY TO KALISPELL MALTING & BREWING CO'S. BEST BEER

**B-49**

- 2. COORS AMERICA'S FINE LIGHT BEER

**B-52**

- 5. DRINK AMERICAN BEER

**B-55**

- 19. UNIVERSITY U OF B BUDWEISER
- 20. GENESEE BEER
- 21. RAINER MOUNTAIN FRESH BEER
- 22. SCHAEFER BEER

**B-63**

- 3. DRINK GUND'S KEG AND BOTTLE BEERS LACROSSE, WIS. (G IN MUG)

**C-1**

- 8. LIBERTY BREWING CO. TAMAQUA, PA.
- 9. MEYER - BEER, M.B. CO. BLOOMINGTON, ILL.

**C-10**

- 47. WAGNER BEER MIAMI, FLORIDA



C-11

37. THE CLEVELAND-SANDUSKY CO. CLEVELAND, O. SANDUSKY, O. /  
DRINK BREWED CRYSTAL ROCK

C-12

166. FOX VALLEY BREWING CO. FEINER BEER  
167. THE FRANKLIN BREWING CO. BEN BREW 100% GRAIN (SEE #9 & #163)  
168. NATIONAL BRWG CO. EAGLE BEER ABOVE ALL EAGLE BEER SPECIAL (BOTTLE)  
169. NORTHERN BREWING CO. WATERTOWN, N.Y. / WATERTOWN CREAM ALE  
JEFFERSON LAGER OLD STYLE LAGER (SEE #140)

C-13

284. FAMOUS A B C BEER / SAME  
285. ASHLAND BREWING CO. ASHLAND, WIS. WHITE RIBBON BEER  
286. BLUE ISLAND MALT CO. 13119 WESTERN AVENUE PHONE -  
BLUE ISLAND 97 BLUE ISLAND, ILL.  
287. BIG CHIEF BEER  
288. FOX DELUXE BEER (BOTTLE) (SEE #144)  
289. DRINK GEYER'S FRANKENMUTH SPECIAL BREW  
290. HANLEY'S PEERLESS ALE  
291. INDIANA BEER  
292. MCGOVERN'S PILSENER BEER  
293. ROGER WILLIAMS ALE 1202 RWB CORP PROVIDENCE, R.I. (BOTTLE)  
294. WISCONSIN SELECT LAGER BEER

C-16

20. DOMINION PALE ALE  
21. INTERNATIONAL BREWERIES INC. BUFFALO, N.Y.  
IROQUOIS BEER HAVE AN IRI (INDIAN HEAD 1842) (SEE #18)

C-17

65. THE VICTOR BREWING CO. JEANNETTE, PA. DRINK OLD SHAY ALE /  
NOW! TASTE STEINHAUS THE BEST BEER YET!  
(CORRECTION TO JAN 91 ADDITIONS)

C-18

23. CROFT CREAM ALE BREWED IN THE OLD TRADITION / SAME

C-19

13. ROLLING ROCK PREMIUM BEER (SEE #8)

C-20

27. ELIZABETH BREWING CORPORATION ELIZABETH, N.J. / ELIZABETH BREW (SEE #15)

C-36

4. KLARKO'S BOTTLERS SUPPLY CO. MALT & HOPS /  
611 UNION ST. ELLIOTT 8552 FREE DELIVERY SEATTLE, WASH

E-2

30. HOLIHAN'S ALE-BEER, LAWRENCE, MASS. / SAME (SEE #6)

E-4

316. DRINK ARROW BREW / SAME  
317. KEY TO BURKHARDT'S BEER / SAME  
318. RENNER'S LAGER YOUNGSTOWN OHIO / SAME

E-5

90. BUDWEISER ON TAP EMIL'S BAR WINES AND LIQUORS  
1959 LYNCH ST. ST. LOUIS, MO. PHONE PROSPECT 9127  
91. BUDWEISER - BEER ON TAP CY & SPEY'S TAVERN  
DIAL 4-9419 1812 - 7TH ST. MOLINE, ILL.  
92. HAMMS BEER SIDNEY, NEBR COMPLIMENTS OF BOYD'S CIGAR STORE  
93. HAMM'S PREFERRED STOCK BEER ELKHORN BEV. CO. NORFOLK, NEBR.



- 94. SIOUX CITY BREWING CO. HEIDEL-BRAU MELLO-LIGHT BEER  
BREWED AND BOTTLED BY THE SIOUX CITY, IA.
  - 95. STORZ BREWING CO. OMAHA, NEBR. U.S.A.  
AMERICA'S REFRESHING BEER (SEE #61)
- E-6**
- 203. BRACKENRIDGE BREW. CO. INC. HIGHLAND 2929 / OLD ANCHOR BEER
  - 200. CHARTIERS VALLEY BRY. CARNEGIE, PA. / OLD CARNEGIE BEER SKIBO ALE  
(CORRECTION TO JAN 91 ADDITIONS)
  - 204. DRINK GILT TOP BEER / SAME
  - 205. KUEBLER BREWING CO. PHONE 4225 EASTON, PA. /  
BEER - ALE - PORTER QUARTS - PINTS - STEINIE
  - 206. NEVIN-FRANK CO. BUTTE, MONTANA (SEE B-13)
  - 207. CALL BRACKENRIDGE BREWING CO. HILAND 2929 /  
KEY TO OLD ANCHOR ALE AND BEER
  - 208. OLD LANCASTER BREWING CO. LANCASTER, PA.
  - 209. PEORIA SPECIAL BEER / SAME
  - 210. PITTSBURGH BREWING CO. / IRON CITY PILSENER, LAGER, FOX HUNT ALE  
(SEE #41)
  - 201. PITTSBURGH BREWING COMPANY / IRON CITY PILSENER LAGER - FOX HUNT ALE  
(CORRECTION TO JAN 91 ADDITIONS)
  - 211. PITTSBURGH BREWING COMPANY / IRON CITY PILSENER LAGER, FOX HUNT ALE  
(SEE #201)

**E-7**

- 63. KESSLER BREWING COMPANY
- 64. DRINK MILWAUKEE BREWS
- 65. OLEAN BREWING CO. OLD DUTCH BRAND BEER
- 66. TROMMER'S MALT BREWS

**E-8**

- 93. DAEUFER BREWING CO. ALLENTOWN, PA. / SAME
- 94. STAR BREWERY HOP GOLD / SAME

**E-9**

- 117. ERLANGER'S BEER - ALE - PORTER / SAME
- 118. GOLDEN AGE BEER NO HEADACHES / SAME

**E-10**

- 217. PICKWICK ALE LIGHT PICKWICK / SAME

**E-11**

- 18. DRINK ARROW BEER IT HITS THE SPOT (ARROW)

**E-14**

- 748. BUSCH BUSCH
- 749. TERRE HAUTE BRG. CO. INC. TERRE HAUTE, IND. CHAMPAGNE  
VELVET BEER / TENNESSEE BEER CO. NASHVILLE - PHONE 57326
- 750. FRANK JONES ALE FAMOUS SINCE 1880 /  
FRANK JONES BRG. CO. PORTSMOUTH, N.H.
- 751. WALDORF ALE / WALDORF LAGER

**E-16**

- 9. MALTOSIA BUFFALO, N.Y.

**E-17**

- 9. DRINK "EVERETT BEER" / SAME
- 10. SALT LAKE CITY BREWING CO. / DRINK AMERICAN BEAUTY BEER (SEE #8)

**E-23**

- 20. BLUE AND GOLD LAGER (SEE #1)

**E-27**

- 6. SHEA'S STOCK ALE / SHEA'S SELECT



**F-2**

46. BADGER PRODUCTS COMPANY

**F-3**

14. BUDWEISER FINE FOOD, EGAN'S TAVERN, MT. OLIVE - PHONE 8801-ILL  
15. PABST BLUE RIBBON BEER & ALE, KOOL-RITE SALES CO., REPUBLIC 7-0810

**F-4**

36. ATLAS SPECIAL BREW, W.C. BOWEN, COUNTY 950 - RT. 2

**F-5**

28. USE BADGER MALT EXTRACT & HOPS / NATIONAL BEVERAGE  
DISTRIBUTING CO. 614-616 E. WATER ST. MILWAUKEE WISC.  
29. OHIO MALT & HOP CO. 217 S. 4TH ST. STUEBENVILLE, OHIO /  
OUR VERY BEST HOME RULE - RED SUN - SAMBO SANDOW "39" MALT

**F-6**

77. 44 SUPPLY CO. 11117 UNION AVE. / MALT 44 HOPS  
78. INDEPENDENT BREWING & MALTING CO. / OLD BLACKHAWK BOTTLE BEER  
79. BOTTLERS OF LANCASTER BEER 522 E. KING ST., BOTH PHONES /  
EAST KING ST. BOTTLING WORKS  
80. THE MALT HOUSE 114 ELEANOR ST. / HOPS, EXTRACTS, CAPPERS, AND SUPPLIES  
81. THE NEUSSEL BREWING CO. / PROMPT DELIVERY TO FAMILY TRADE BOTH PHONES

**F-7**

6. GENESEE BEER ADAMS COUNTY HOME BEVERAGE CORP.  
U.S. ROUTE 30 CASHTOWN, PA. 17310 PHONE 334-5400

**F-8**

2. COMPLIMENTS OF CENTENNIAL BREWING COMPANY MANUFACTURERS OF THE  
CELEBRATED CENTENNIAL BOTTLE BEER FOR FAMILY USE TRY A CASE BUTTE

**F-15**

9. JONES BREWING CO., SMITHTON, PA. STONEY'S BEER AMERICA'S BEST BEER,

**F-18**

9. COMPLIMENTS OF CENTENNIAL BREWING CO. / DRINK CENTENNIAL BOTTLED BEER  
10. THE GERMAN BREWING CO. / CUMBERLAND, MD.

**F-27**

4. PEERLESS BEER / "JACK EVANS"

**G-1**

63. GRAND PRIZE LAGER BEER (SEE #12)  
64. INDIA BEER INDIA PALE ALE

**G-5**

33. BUFFALO BREWING. DRINK BELLWEISER BEER BUFFALO, N.Y.  
34. KOENIG'S BOHEMIAN CREAM ALE BEER AUBURN N.Y.  
35. WEST END BREW. CO. PILSENER BEER UTICA, N.Y.

**G-7**

21. NATIONAL BREWING CO. BALTO. MD. / NATIONAL BOHEMIAN NATIONAL PREMIUM

**G-9**

86. GLOBE BREWERY, BALTO. MD. ARROW BEER (BLACK ON RED) (SEE #35)  
87. STONEY'S AMERICA'S BEST BEER (WHITE ON BLUE)

**H-2**

158. ANACONDA BREWING CO. DRINK ROCKY MOUNTAIN BEER  
159. CLASS & NACHOD BREWING COMPANY PHILADELPHIA, PA.  
ASK FOR BLACK EAGLE BEER (B E IN SHIELD ON DOUBLE EAGLE) (SEE #56)  
160. "FORT SCHUYLER" BEER AND ALE (LEFT HANDED)  
161. JACOB HORNUNG BREWING CO. PHILADELPHIA, PA. "WHITE BOCK"  
(SEE #67 & #139)



162. OLD FAITHFUL BEER BOZEMAN MONT.  
 163. "SAN DIEGO" THE QUALITY BEER  
 164. WEISBROD & HESS PEACOCK BEVERAGES  
 165. WENTZLER BREWERY
- I-4
62. NEW ENGLAND ALE & BEER
- I-12
197. THE BURGER BREWING CO. CINCINNATI & AKRON, OHIO /  
 HAVE FUN HAV-A BURGER BEER  
 198. OERTEL BREWING CO. INCORPORATED LOUISVILLE KY OERTELS '92 BEER (LOGO) /  
 SAME  
 199. STERLING IT'S AGED THAT EXTRA MONTH / SAME (SEE #143)
- I-13
124. OLAND'S EXPORT INDIA PALE ALE / OLAND'S SCHOONER BREW (SEE #109)  
 125. ORIGINAL OLD GERMAN LAGER BEER / KINGS ALE
- I-14
74. THE WILLIAM SIMON BREWERY, BUFFALO, N.Y. BEER SIMON PURE ALE / SAME
- I-16
47. BUTTE LAGER BEER ENJOYED FOR 4 GENERATIONS / BUTTE BREWING CORP.
- I-17
285. PABST BLUE RIBBON / BRASE DISTRIBUTING CO. NORTH PLATTE, NEBRASKA
- I-19
32. MELLOW STERLING BEER
- J-3
36. FALSTAFF BREWING CORP. ST. LOUIS, MO. /  
 FALSTAFF AMERICA'S PREMIUM QUALITY BEER
- J-5
103. REGAL BEER / SAME
- K-2
5. REGAL BEER
- L-2
13. BOHEMIAN BREWING CO OF CHICAGO
- L-4
62. BLATZ MILWAUKEE'S FIRST BOTTLED BEER ESTABLISHED 1851  
 63. JOS SCHLITZ BREWING CO. MILWAUKEE, WIS. U.S.A. "EXPORT" (OVER GLOBE  
 WITH "PURE" ON FLAG AT EACH SIDE) THE BREWERY'S OWN BOTTLING SCHLITZ  
 THE BEER THAT MADE MILWAUKEE FAMOUS CONTAINS 100 U. S. P. K.  
 UNITS VITAMIN C (ON NECK LABEL: 2 WORLDS BOTTLED AT THE BREWERY)  
 64. BY SCHREIBER BREWING CO. INC. BUFFALO, N.Y. MANRU-LAGER  
 A THOROUGHLY AGED LAGER BEER (ON NECK LABEL: SCHREIBER MANRU)
- L-9
5. MICHELOB DRAFT MICHELOB GOLDEN DRAFT  
 COLD FILTERED FOR PURITY (EAGLE IN A)
- M-2
18. MUEHLBACH BEER KANSAS CITY (BOTTLE)  
 19. RISING SUN BREWING CO. SEE-BO ELIZABETH, N.J.  
 TEL. ELIZ. 521 (SEE-BO ON BOTTLE)
- M-3
41. HIALEAH BREWING CO. JOCKEY CLUB BEER "A SURE WINNER"  
 HIALEAH, FLORIDA (GREEN)



**M-19**

21. RICKEL MALT / SAME (STEEL)
22. SCHLITZ (IN LOGO)
23. SCHLITZ (EMBOSSSED LETTERS ON HANDLE)
24. STAG BEER / SAME (CHROME)

**M-29**

40. BLATZ (RED CIRCLE) PABST BLUE RIBBON (RED RIBBON) GRELLNER DISTRIBUTING CO. RICH FOUNTAIN, MO. PHONE 1731 BLATZ - PABST - MILLERS
41. BUDWEISER 5% ON DRAFT SMITTY'S "BUDWEISER" TAVERN PACKAGE LIQUOR & WINE ROSEBUD, MISSOURI HAROLD J. SMITH, PROP.
42. DISTRIBUTOR OF CARLING'S BLACK LABEL BEER COMPLIMENTS OF DON PRICHARD ALLEGANY - GARRETT COUNTIES MARYLAND
43. "LUCK LAGER" SCHLITZ-BOHEMIAN LUCKY LAGER DIST. CO. 500 E RAILROAD
44. STAG - BLACK LABEL NEMO DISTRIBUTING CO.
45. STAG - FALSTAFF & MILLER'S ON DRAFT HUND'S TAVERN CUT RATE LIQUORS MASCOUTAH, ILL.

**M-30**

45. CARLINGS - PIELS - BUDWEISER SCHMIDTS - LOWENBRAU OWASCO BEVERAGE CORP. 161 YORK ST. AUBURN, N.Y. PHONE 252-6111
46. GO GO GO FOR FALSTAFF (SHIELD) MILLER HIGH LIFE (SHIELD) CENTRAL DISTRIBUTING CO. 1220 11TH ST. BOONVILLE, MISSOURI
47. MILLER & PABST BLUE RIBBON BEER ST. CHARLES, MO. ED WINDLER DIST. CO. MILLER HIGH LIFE (BLUE LOGO) PABST BLUE RIBBON (BLUE RIBBON LOGO)
48. ORIGINAL PABST BLUE RIBBON KIRCHNER'S BEER DISTRIBUTOR 740-44 POPLAR STREET LANCASTER, PA. PHONE 393-0343
49. SCHLITZ ON TAP GLENNONS TAVERN 201 WEST BODMAN ST BEMENT, ILL AIR CONDITIONED COMPLETE LINE OF PACKAGED LIQUORS & BEERS

**M-38**

7. BUDWEISER / MICHELOB / BUSCH BAVARIAN A-B DISTRIBUTING CO. PHONE BUS. 594-3641 - RES. PH. 594-3527 TRINITY, TEXAS

**M-43**

26. HEILEMAN'S OLD STYLE PURE GENUINE (IN LOGO) / SAME

**M-51**

7. RHEINGOLD / SAME (RED ON WHITE)

**M-70**

6. MICHELOB

**M-72**

2. SEBEWAING BREWING COMPANY SEBEWAING, MICH.

**M-73**

6. KESSLER BREWING CO. HELENA, MONTANA / LORELEI BEER / HOTEL PLACER HELENA, MONTANA (BLUE ON CHROME) (CORRECTION TO SUPPLEMENT)
7. SAME AS #6 (YELLOW ON CHROME)
8. SAME AS #6 (RED ON CHROME)
9. SAME AS #6 (GREEN ON CHROME)
10. SAME AS #5 (YELLOW ON CHROME)
11. SAME AS #5 (RED ON CHROME)
12. SAME AS #5 (BLUE ON CHROME)

**M-91**

2. BUD LIGHT BEER / SAME (BLUE ON WHITE)
3. LITE A FINE PILSNER BEER / SAME
4. MILLER GENUINE DRAFT / SAME



- 5. MILLER HIGH LIFE / SAME
- 6. LONE STAR BEER / SAME
- N-3**
- 8. MILLER HIGH LIFE SAFETY AWARD
- N-11**
- 11. SEITZ - BREWERY EASTON, PA. DRINK SEITZ BEER
- N-18**
- 12. FALSTAFF (SHIELD) CARL CLARK SALES CO. ST. JOSEPH, MO.
- N-19**
- 2. BLATZ MILWAUKEE'S FINEST BEER KRAUSE'S WHOLESALE  
PHONE 8363 MANITOWOC, WIS.
- N-22**
- 5. LAKESIDE BREWING COMPANY DRINK POTOSI BEER ALWAYS GOOD  
KAPOFF BOTTLE OPENER
- N-27**
- 6. MICHELOB
- N-29**
- 9. BLATZ BEER LINDAN DISTRIBUTING CO.
- N-30**
- 5. BRECKENRIDGE BREWERY & PUB (PIC OF BREWERY)
- N-40**
- 26. BUDWEISER KING OF BEERS BREWED BY OUR ORIGINAL PROCESS FROM THE  
CHOICESTS HOPS RICE AND BEST BARLEY MALT. THE LARGEST SELLING  
BEER IN THE WORLD. ANHEUSER-BUSCH INC. ST. LOUIS /  
KING OF BEER (EAGLE IN A & EAGLE IN A)
- O-2**
- 11. DICK'S BEER
- 12. HIGHLANDER-SCHMIDT'S DILLON BEVERAGES CANDY AND TOBACCO  
PHONE 154-W DILLON BOTTLING WORKS (SEE #9)
- 13. DRINK HUDEPOHL PURE LAGER BEER (SEE #7)
- 14. ROYAL BOHEMIAN BEER DISTRIBUTED BY MONTANA DAKOTA  
DISTRIBUTING CO. WILLISTON N.D. GLASGOW-MONTANA
- 15. STANDARD BREWING CO. INC. OLD OXHEAD ALE ROCHESTER, N.Y.
- 16. STANDARD LIGHT ALE PROPERLY AGED ALWAYS (B.S. CO. TRADEMARK)
- 17. STEGMAIER'S, BALLANTINES, BEER - ALE - PORTER BALL & CO.,  
DISTRIBUTORS, DIAL 43176, 307 N. 6TH ST. - READING, PA.
- O-4**
- 27. DICK'S BEER
- 28. HYDE PARK
- O-8**
- 7. DRINK BLACK FOREST BEER
- 8. BRACKENRIDGE BREWING CO., OLD ANCHOR BEER.
- 9. WACKER BREWING CO. LANCASTER, PA.
- O-13**
- 2. M B C (MENDOCINO BREWING CO.)
- P-3**
- 3. PABST MILWAUKEE / SAME
- P-7**
- 35. GARDEN CITY BREWING CO. HIGHLANDER BEER MISSOULA, MONT.
- 36. OERTEL BREW CREAM BEER FRANK BOCARD & CO WINES & LIQUORS  
THE OLDEST MAIL ORDER HOUSE IN NEW ALBANY, IND. AGENT
- 37. THE SOUTH BEND BREWING ASS'N SOUTH BEND, IND. DRINK HOOSIER CREAM



P-8

164. BILLINGS BRG CO. DIAMOND BRAND
165. BUTTE BREWING CO BUTTE MONT EXPORT PILSENER / SAME
166. CAPE BREWERY & ICE CO. CAPE GIRARDEAU, MO. /  
BREWERS OF STANDARD LAGER BEER EXPORT BOTTLE BEER A SPECIALTY
167. CHICAGO BREWING CO. / LIQUID MALT FOOD.
168. JOHN GUND BREWING CO. LACROSSE, WIS. / SAME
169. JOHN GUND BREWING CO. LACROSSE, WIS. / GUND'S PEERLESS MEDAL-PARIS-1900
170. JUNG BRAU / SAME
171. JUNG BREWING CO. MILWAUKEE, WIS.
172. MCAVOY BREWING CO. CHICAGO / MALT BREW
173. MONTANA BREWING CO GREAT FALLS MONT / SAME
174. SAVANNAH BREWING CO. / SAME
175. STULZ BROTHERS / SAME
176. TENNESSEE BREWING CO. MEMPHIS, TENN. / SAME (SEE #39)
177. TERRE HAUTE BREWING CO. CHAMPAGNE VELVET AND VELVET TERRE HAUTE, IND. /  
SAME

P-10

63. COMPLIMENTS OF JOHN T. BETZ & SONS LTD. PHILADELPHIA, PA.  
GOLD BECK'S EXTRACT OF MALT
64. BIRK BROS. BREWING CO. CHICAGO / "MALT VIGOR" A HEALTH TONIC
65. KEELEY BREWING CO. CHICAGO TEL. CALUMET 349 /  
YE OLDE INN ALE KEELEY'S MALT TONIC BARLEY STOUT "PORTER"
66. WM. J. LEMP BREWING COMPANY, ST. LOUIS, MO. / SAME (SEE #16)
67. NATIONAL BREWERY CO. ST. LOUIS MO. / GRIESEDIECK BROS., PROP'S.
68. ONTARIO BREWING CO. OSWEGO, NEW YORK / SAME
69. COMPLIMENTS SPRINGFIELD BREWING CO. SPRINGFIELD, MO. / SAME

P-14

17. FALSTAFF "THE CHOICEST PRODUCTS OF THE BREWERS ART" (FALSTAFF IN SHIELD)
18. HOLIDAY GREETINGS FROM HIGHLANDER BEER

P-17

11. BILLINGS BREWING CO. BILLINGS, MONT. / SAME

P-19

38. ANHEUSER BUSCH BR'G ASS'N'S BEER MARSHALLTOWN, IOWA.  
BERNSTEIN BROS. WHOLESALE DEALERS IN
39. VAL. BLATZ. ODEMARK & BRIGNOLI.
40. VAL BLATZ BEER ODEMARK & BRIGNOLI PIERRE, S.D.
41. BLUE RIBBON WHISKEY AND BLUE RIBBON BEER JOPLIN, MO.  
INTERSTATE MERC. CO. WHOLESALE WINES AND LIQUORS  
MAIL ORDERS PROMPTLY ATTENDED TO AGENT FOR
42. ORIGINAL BUDWEISER ROSENFELD LIQUOR CO.  
WHOLESALE LIQUOR DEALERS, COUNCIL BLUFFS, IOWA.
43. EDELWEISS THE PURE FOOD BEER AND SUNNYBROOK WHISKEY  
O.C. BEIDLITZ WHOLESALE & RETAIL ROCK ISLAND, ILL.
44. BOTTLER OF WHISKIES, WINES, ETC. ALSO FINKENAUER'S & BERGDOLL'S BEER  
GLOCK & FENNER PHILA PETER CARR 216 N. 18TH ST. PHILADELPHIA, PA.
45. HAUCK'S BEER ON DRAUGHT J. WILLIAMS' CAFE 714 EAST PEARL STREET
46. PABST, SCHLITZ AND CUMBERLAND BEERS IN BOTTLES AND ON DRAUGHT  
PACKHAM BROS. BALTO. MD. SCHLEUSS & TIMMONS SALTGIN AND KESIANRANG  
135 NORTH QUEEN ST. MARTINSBURG, W. VA.  
WE MAKE A SPECIALTY OF FINE OLD RYE WHISKIES,
47. SOLE AGENT FOR RIEKER'S BEER BUY YOUR WHISKIES, WINES, & BEERS  
OF JOHN G. WALL 6TH & CUMBERLAND STS. HARRISBURG, PA.



- 48. BOTTLEERS OF SCHMIDT'S & SCHEMM'S BEER, BIRCH FAMILY LIQUOR STORE  
CHARLES ROSENBERG & SON, PROP, DRINK PESO WHISKEY,  
\$1 A QUART 2939 FRANKFORD AVE.
- 49. SCHOENHOFEN BR'G CO'S EDELWEISS WATERLOO, IOWA.  
J.J. DRUMWALD WHOLESALE & RETAIL
- 50. SPOKANE BOTTLE SUPPLY CO. MALT, HOPS & CORDIALS  
408 W. SPRAGUE AVE. SPOKANE MAIN 3580 J. M. MOORE SPOKANE  
**P-22**
- 14. THE WILLIAM GERST BREWING CO. NASHVILLE, TENN. / SAME  
**P-24**
- 14. NEW SOUTH BREWING AND ICE CO. MIDDLESBOROUGH, KY. /  
DRINK PINNACLE AND WIENER BEER.  
**P-25**
- 8. ADOLPHUS BUSCH / (EAGLE IN A) MALT-NUTRINE (PIC. OF A.B.) (SEE #3)  
**P-31**
- 6. BUTTE BREWERY BUTTE, MONTANA DRINK EUREKA BEER  
**P-51**
- 37. JOHN GUND BREWING CO. LACROSSE, WIS. / DRINK PEERLESS
- 38. KEELEY BREWING CO. CHICAGO TEL. CALUMET 349. /  
KEELEY'S MALT TONIC YE OLDE INN ALE BARLEY STOUT "PORTER"
- 39. KEELEY BREWING CO. TEL. CALUMET 349 /  
YE OLDE INN ALE BARLEY STOUT "PORTER"
- 40. WHOLESALE DEALERS IN PABST AND ANHEUSER-BUSCH'S BEERS  
KRIEGER-KLUMPP BEER & ICE CO. RICH HILL, MO.
- 41. COMPLIMENTS SO. OMAHA BREWING CO. TEL. 8. SO. OMAHA, NEBR. / SAME
- 42. ROCK ISLAND BREWING CO. / R.I.B. COMPANY (SEE #5)
- 43. TENNESSEE BREWING CO. MEMPHIS TENN. / COLUMBIA EXTRA PALE PILSENER.  
**P-53**
- 5. SCHLITZ THE BEER THAT MADE MILWAUKEE FAMOUS  
IRWIN DIST. CO. ALL LOCAL BEERS PHONES 56 - 1541  
**P-54**
- 12. MONONGAHELA BR'G CO. BEERS G. KRAUS, AGENT PGH., PA.
- 13. SCHILLERS PILSENER BEER 36 PINTS \$3.00 SUNNY TIMES WHISKEY 4 QTS.  
\$2.95 EXPRESS PAID SCHILLER BROS KANSAS CITY, MO. AND CAIRO, ILL.  
**P-55**
- 3. PABST MILWAUKEE / SAME  
**P-57**
- 8. DUBUQUE MALTING CO. DUBUQUE, IA. / SAME  
**P-82**
- 7. ANHEUSER-BUSCH BREWING ASS'N, ST. LOUIS, U.S.A. / (EAGLE IN A)
- 8. BILLINGS BREWING CO. / SAME  
**Q-8**
- 29. BUD LIGHT BEER (BLUE & RED ON WHITE)
- 30. CINCI CREAM LAGER BEER (RED & WHITE ON RED)
- 31. LONE STAR LIGHT BEER (RED & BLUE ON WHITE)
- 32. LOWENBRAU (LION) (BLUE ON GOLD)
- 33. PEARL LAGER BEER  
**Q-11**
- 11. IRON CITY BEER (LOGO) (RED & WHITE)



Q-12

- 21. BUD MAN (PIC WITH WORDS ON CHEST) BUD MAN (RED ON WHITE)
- 22. BUSCH BEER (MOUNTAINS) HEAD FOR THE MOUNTAINS (BLUE ON WHITE)
- 23. BUSCH LIGHT BUSCH LIGHT (DARK BLUE ON WHITE)
- 24. LA BEER FROM ANHEUSER-BUSCH LA BEER FROM ANHEUSER-BUSCH (BLUE ON WHITE)
- 25. MENDOCINO BREWING COMPANY (IN LOGO) BREWERS OF RED TAIL ALE  
(WHITE ON RED)

Q-18

- 15. BUD LIGHT BEER (DARK BLUE ON GREEN)
- 16. BUD LIGHT BEER (DARK BLUE ON RED)
- 17. BUD LIGHT BEER (DARK BLUE ON WHITE)
- 18. BUD LIGHT BEER (DARK BLUE ON YELLOW)
- 19. COORS LIGHT (LIGHT BLUE ON DARK BLUE)
- 20. KILLIANS RED INSTEAD (WHITE ON GREEN)
- 21. LEINENKUGEL'S LIMITED (GOLD ON BLACK)
- 22. LITE BEER TOUR DE LITE
- 23. PABST
- 24. ROLLING ROCK (WHITE ON GREEN)
- 25. SAMUEL ADAMS (BLUE) BOSTON ALE (RED) (ON WHITE)
- 26. YUENGLING'S - POTTSVILLE, PA. AMERICA'S OLDEST BREWERY (WHITE ON RED)

Q-19

- 5. COORS
- 6. COORS LIGHT
- 7. STROH'S BEER (LOGO)

Q-22

- 2. OLYMPIA GOLD (GOLD ON SILVER)
- 3. PABST BLUE RIBBON (BLUE & RED ON SILVER)

Q-31

- 4. BUD DRY USA 36 USC 380 (WHITE ON RED) (5 OLYMPIC RINGS)
- 5. BUD LIGHT USA 36 USC 380 (WHITE ON BLUE) (5 OLYMPIC RINGS)
- 6. BUDWEISER USA 36 USC 380 (RED ON WHITE) (5 OLYMPIC RINGS)
- 7. ORIGINAL COORS (BLUE ON WHITE) (PIC OF FOOTBALL)
- 8. COORS DRY (GREEN ON WHITE) (PIC OF MOUNTAINS)
- 9. COORS LIGHT THE SILVER BULLET (PIC OF FOOTBALL) (WHITE ON BROWN)
- 10. KING COBRA PREMIUM MALT LIQUOR (GOLD ON BLACK)
- 11. MICHELOB LIGHT BEER (SILVER ON BLUE)
- 12. MILLER TIME (RED ON WHITE) (ORANGE DESIGNS)
- 13. MILLER GENUINE DRAFT (WHITE ON BROWN)
- 14. MILLER HIGH LIFE (RED ON WHITE)
- 15. SARASOTA BREWING CO. HANDCRAFTED BEER EST 1989 (PIC OF PELICAN)

Q-32

- 2. LITE BEER 8 (GREY ON BLACK) (EIGHT BALL & TWO CUE STICKS)
- 3. OLD STYLE BEER GO CUBS (PIC OF BASEBALL & BAT) (RED & BLUE ON WHITE)

R-5

- 2. CHAMPAGNE VELVET

R-7

- 2. HAUENSTEIN BEER (SEE #1)

\*\*\*\*\*  
 \* A SINCERE THANK YOU TO THE FOLLOWING DEVOTED COLLECTORS \*  
 \* WHO TOOK THE TIME TO SEND THEIR NEW ADDITIONS (ULS) TO \*  
 \* ME TO MAKE THIS LIST POSSIBLE. IT IS OF VALUE AND \*  
 \* APPRECIATED BY ALL OF US: NORMAN JAY, BILL PATTIE, \*  
 \* ART JOHNSON JR., BILL MCKIENZIE, JOHN STANLEY, \*  
 \* TOM ZRUNO, LARRY BIEHL, RAY BRAEUNER, ART SANTEN, \*  
 \* JOE CARDONE, JACK FORD, ALAN GEYER, LARRY MOTER, \*  
 \* ROBERT CROSS, FIL GRAFF, RANDY LONG, HAROLD QUEEN, \*  
 \* BEN HOFFMAN, BOB VAN VACTOR, DON WHELAN, BOB STAHLY, \*  
 \* VERNE VOLLRATH, BILL ENNIS, MARK BARREN, ROGER JARRELL, \*  
 \* MARC BENJAMIN \*  
 \*\*\*\*\*