



JUST FOR OPENERS

3712 SUNNINGDALE WAY DURHAM, NC 27707-5684 (919) 419-1546
Past Editors Don Bull (1979-83) Ed Kaye (1984-1988) Art Santen (1989-1993)

Membership Renewals / Annual Dues \$20.00

If the label on your Newsletter Mailing Envelope has an Expiration Date of 03/31/96, please pay your dues now. A membership renewal card should be enclosed. Other members please verify the expiration date shown on your mailing label. If you do not agree with the date please notify me.

A-21 Jack Daniels & G-41 Rolling Rock from the October, 1995 Issue

The opener shown on page one of the October issue can be ordered from Jack Daniels. The cost is \$2.00 per opener which includes shipping. Please order from the following address:

**John Barrett, Brewmaster, Spinner Opener Offer
Jack Daniel Brewery
Lynchburg, TN 37352**

G-41 Rolling Rock can be ordered from your editor for \$3.00 each (includes postage). Limit 2 per member. Special thanks to Harold Queen for obtaining a supply of these.

1996 Convention April 24th-28th Suburban Chicago (Lisle, IL)

Norm Jay is charging ahead with preparations for this year's convention. Please plan to attend. Let me state once again that Chicago is a nice central location for our membership. The member registration form is enclosed. This year's hotel registration will be done by calling the 800 number below. This will hopefully simplify the process somewhat.

**You Can Register at the Hyatt Lisle by Calling 1-800-233-1234
Be Sure to Identify Your Party as "Just For Openers"**

Ollie Hibbeler has an award made for "Best In Show Award for J.F.O. Discovery or Addition" at the April convention. The rules are only one opener or corkscrew per member can be entered in this contest. The opener or corkscrew must be beer advertising and must be a new discovery or addition (not in the 1995 Handbook). No names will be shown with the entries and documentation should be limited to a 3x5 note card. Hopefully everyone can enter one item even if they cannot bring a large display.

Please note that "The Best in Show Award" is in addition to our regular display contest. That contest has no rules. Beer or non-beer openers, any shape or size. All displays are welcomed. Please share your collection with other members. This is the one chance each year to see a lot of great openers and corkscrews.

Member's Update

Unfortunately I must report that long time member John Horn (#212) passed away November 5th. John was 79 years of age and is survived by his wife Ardea and three children. He was an avid collector of types M-1, M-2 and L-2 openers and corkscrews. He was an early member of JFO and always in attendance at conventions. Ardea told me he loved opener collecting and was always willing to share his knowledge and help other members. He will be greatly missed by the JFO organization. Ardea has indicated to me she intends to keep his collection of M-1s and M-2s. John had sold most of his other openers at the 1994 convention in Reading.

Roma Brodeur (#367) another longtime Canadian JFO member passed away from cancer in October. Roma was a former Postman and had collected all Canadian breweriana for over 20 years. He had amassed a fabulous collection and it was auctioned near Montreal on December 9th and 10th. He had over 4,500 openers in his collection. Originally slated to be sold in lots of 50, Dale Deckert convinced the auctioneer to sell the collection as one lot and Dale was the successful buyer over the phone. He had stiff competition from a local corkscrew collector who was only interested in the couple hundred corkscrews included in the lot, but Dale prevailed with a winning of \$7,000 (Canadian).

1996 Preliminary Convention Schedule

Wednesday April 24th	Early Arrivals, Hospitality Room Opens Room-To-Room Trading
Thursday April 25th	Room-To-Room Trading, Check-In Continues
Friday April 26th	Joe Young Corkscrew Class Mike Schwimmer Cigar Box Opener Class Convention Auction Room-To-Room Trading
Saturday April 27th	Convention Show open to the Public Saturday Night feast at Norm Jay's House
Sunday April 28th	Check-Out, Convention Ends

A finalized schedule will appear in the April issue. Any suggestions should be sent to Norm Jay. A Friday group luncheon is also in the works. Bob Stahly is having a super nice convention opener made up. Convention registration includes one of these openers.

Remember Bring a Display!!!

Article Deadlines (Also Auction Material) For Each Newsletter

January ("New Additions") Issue, Deadline is December 1st
 April ("Membership Roster"), Deadline Issue is March 1st
 July ("Convention") Issue, Deadline is June 1st
 October ("New Discoveries") Issue, Deadline is September 1st

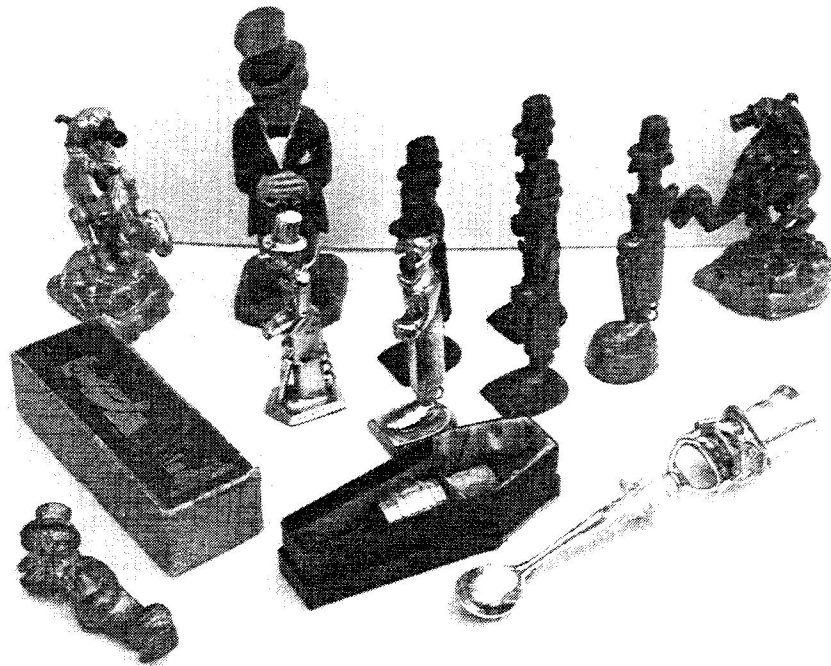
"The Kirby Corkscrews" by Donald Bull (Copyright 1988, 1995 by Donald Bull)

THE KIRBY CORKSCREWS

by Donald Bull



<p>"The Kirby Corkscrews" by Donald Bull (Copyright 1988, 1995 by Donald Bull)</p>
--



Bull Type Collection of "Volsteads". They are described below with values.

- 1) The figures to the left and right rear are a take off on the sculpture "The End of the Trail". These bottle openers (umbrella handle) are marked "Copyright 1933, Prohibition, The End of the Trail". (Value: \$250-\$300)
- 2) At left center rear is the Syroco "Old Codger". He's 8 1/2" tall. In Herb Danziger's study of "The Syracuse Ornamental Company Corkscrews Circa 1940-1950", The "Codger" (8") and "Topper" (8 1/4") are also listed. (Value: Painted \$80-\$150, Stained \$100-\$175)
- 3) In front of "Old Codger" is the Schuchardt 1934 patent with turning head. (Value: \$125-\$175)
- 4) To the right of the Schuchardt are four varieties of the "Demley" Old Snifter. Two bronze models are 165mm high with non-removable hat and they do not have the Demley mark. One is marked "Old Snifter" (Value: \$50-\$70) and the other "Bishop & Babcock" (Value: \$125), a one-time brewer supply house which was located in Cincinnati, Ohio at 1025 Central Ave. The 3rd bronze model (marked "Bermuda", Value: \$175, without "Bermuda", Value: \$60-\$80) and the chromed version (Value: \$50-\$75) have removable hats are 169mm high and are marked "Old Snifter" with the Demley mark. The box to the left contains a chromed Demley (Value: \$75-\$100).
- 5) The rare 180mm bronze snifter with two cap lifters and umbrella follows the Demleys. This one has no marks. (Value: \$750)
- 6) At front right is the 1932 Flauder patent of a bottle opener with corkscrew, jigger and spoon. (Value: \$100-\$150)
- 7) Horace Bridgewater's 1932 patent of the multi-use figure in a casket is shown in the center. (Value: \$250-\$350)
- 8) In front of the box is an unmarked crudely cast version of the figure. (Value \$100, with corkscrew in the back, Value: \$150)
- 9) Not Shown: "Mr. Dry Figural Wall Mount Bottle Opener" (Value \$80-\$100)

Please Note: (Condition makes a difference)

"The Kirby Corkscrews" by Donald Bull (Copyright 1988, 1995 by Donald Bull)

Andrew Volstead (1859-1947) was a Republican member of the United States Congress from 1902-1922. Volstead is sometimes called the "Father of Prohibition", a title which better fits Neal Dow of Portland, Maine who campaigned successfully for Prohibition in the early 1800s. Volstead was not even a diehard Prohibitionist ("Dry"). He was simply the person who introduced a bill to Congress which provided the means to enforce Prohibition of "the manufacture, sale, or transportation of intoxicating liquors" as called for by the 18th Amendment to the U.S. Constitution (1919).



The young Congressman Andrew Volstead



The old Congressman Andrew Volstead

Who do the Corkscrews in the Photograph on the preceding page represent?

Corkscrew Data

This corkscrew figure is commonly referred to as "Volstead". The earliest "Volstead" reference I can find is in a former addict's 1979 Best 6 (*) in which he pictured several examples. The figure is subsequently shown in the corkscrew books of Perry (1980), Watney & Babbidge (1981), and Bull (1981) as "Volstead". Old Codger shows up in the Best 6 of Brother Tim (1982) and Andrew (1986). Addict Squair shows a Demley in his 1985 Best 6. Many auction catalogs, newsletters, and journal articles have called the figure Volstead. Is it?

(*) The International Correspondence of Corkscrew Addicts (ICCA) and the Canadian Corkscrew Collectors Club (CCCC) have members each year send fellow members a picture of their "Best 6" finds for that year with any known descriptions for each. A single photograph of the "Best 6" is accompanied by a description of each corkscrew giving maker, patent information and any know historical information.

The Facts

I've talked to a lot of people about this "Volstead" and have come up with a lot of dead ends. Here are discoveries:

"The Kirby Corkscrews" by Donald Bull (Copyright 1988, 1995 by Donald Bull)

- 1) Part of a conversation between Don Bull and 92 year old Horace Bridgewater:
 DB: What was the inspiration for your Design Patent of a character in a casket?
 HB: A popular cartoon figure of the time.
 DB: Was that a caricature of Senator Volstead?
 HB: No!

- 2) 90 year old Charlotte Whitney of Granite Falls, Minnesota was a nanny to Volstead's children. She never heard him referred to as "Old Snifter". He often wore a bowtie and carried an umbrella.

- 3) A Charles Dickens figure, Rev. Stiggins, is pictured with top hat and umbrella. He is described as "a man with threadbare black clothes, a prim-faced, red-nosed man with long thin countenance".

- 4) In "The Wrecking of the 18th Amendment" (1943, The Alcohol Information Press), Ernest Gordon writes "the novelist Dickens took a sharp dislike to them (English nonconformist ministers) and caricatured them at every opportunity. Stiggins...was one of his creations...'a man with threadbare black clothes, a prim-faced, red-nosed man with long thin countenance'....He carries the inevitable umbrella of the Englishman and wears the tall hat of the Abe Lincoln period".

- 5) A similar figure appears in the 17th century play "Tartuffe" by Moliere.

- 6) In "The World Encyclopedia of Cartoons" (1980), Maurice Horn says of Rollin Kirby his "most famous contribution to cartoon iconography was Mr. Dry, a figure representing Prohibition...which bore an almost exact resemblance to a figure employed for the same function by Joseph Keppler in 'Puck' a generation earlier".

- 7) While looking through "picture" books of the Prohibition era, I happened upon the figure with top hat and umbrella shown on the cover of this study. It was indeed the figure corkscrew collectors have come to cherish.

- 8) A lot more digging finally turned up an article by Rollin Kirby in a 1933 issue of "Vanity Fair" magazine in which he describes his "invention" of the figure. That article is reproduced in this study.

- 9) Photos of Volstead as a young congressman and as an old congressman do not resemble the corkscrew.

Conclusion

Are the corkscrews caricatures of Volstead?

NO! They are a direct takeoff on the figure invented by Rollin Kirby. Kirby's figure was of his own design but, as with most works of an artist, is based upon objects of the past and present. Kirby's figure is a combination of Moliere's Tartuffe, Dicken's Stiggins, Abe Lincoln, Keppler's studies, and his own vivid imagination. The figure is "Mr. Dry", "Old Snifter", "Little Snort", "Codger", "Old Codger" and "Topper". He is portrayed as the wets saw him and he carries the umbrella of the "dry" factions (I hope the meaning of this symbol is easily recognized!).

Our "Volstead" corkscrews are not "Volstead". These should be the "Kirby" corkscrews.

"The Kirby Corkscrews" by Donald Bull (Copyright 1988, 1995 by Donald Bull)

56

VANITY FAIR

The death of a puppet

BY ROLLIN KIRBY

▪ EDITOR'S NOTE: Rollin Kirby is considered the finest political cartoonist in America and was awarded the Pulitzer Prize on this score in 1921, 1924 and 1928. In the following article, he tells the story of his invention of the high-hatted figure which became the national symbol of Prohibition, a fourteen year national disaster which has now disappeared, we trust forever, from the American scene.

▪ Back in the days when Frank Irving Cobb was editor of the New York Morning *World*, out of the seething turmoil of the period when we were giving until it hurt, hunting out pro-Germans, and hands were playing *Over There*, there arose almost unnoticed by the press of America, a wartime measure to help win the war.

Out of the confusion of the time it eventually became the Eighteenth Amendment. Tacked onto it was an act proposed by an obscure Congressman from Minnesota named Andrew Volstead.

Finally the drum-fire ceased, the boys came home and the wayfaring citizen suddenly realized that something extraordinarily unpleasant had stepped into his life. His liberty had been curtailed, for one thing. He resented that. He also saw growing up around him a sinister, hard-faced gentry: the racketeer and the boot-legger.

The tom-toms beat far into the night in the prohibitionists' camps. They were jubilant, hypocritical, smug and above all else, insolent. They combined what they considered to be virtue with a thin-lipped savagery. They gloated and cheered when a rum-runner was murdered by a prohibition agent. They applied in so far as they were able the methods of Torquemada.

The Methodist Church seized the gon-

facon from the Anti-Saloon League and, aided by the W.C.T.U. and kindred organizations, swept up onto the barricades and thumbed their noses at the bewildered but extremely sore populace who stood huddled in impotent anger in the doorways. They took the Republican party by the scruff of its aging neck and licked all the fight out of it.

But at the beginning of the débâcle Frank Cobb and the *World*, backed by its owners, the Pulitzers, sailed into the fight.

When the press of the country was lying supine under the hob-nailed boots of the Anti-Saloon League, that paper dared to say that the whole thing was vicious, un-American, economically unsound, and a fraud without parallel in our history.

And I, as the political cartoonist, evolved a figure upon which we could hang our displeasure—a figure tall, sour, weedy—something to express the canting hypocrisy we felt about the movement. And above all something to catch the quasi-ecclesiastical overtones inherent in the thing.

This last element was filled with dynamite, for there is an unwritten law in the Fourth Estate that religion is a sacrosanct subject—that it is not a controversial topic and that any criticism, be it ever so oblique, must never enter into the news columns.

However, Frank Cobb approved of the symbol I had evolved and we printed him.

After that, the deluge. Letters from ministers, professional dries, Y. M. C. A. secretaries and the whole self-appointed crew of field marshals in the new dry army poured in on every post.

But the *World* was a fighting paper and I drew him again and again. Upon our



"MR. DRY" DIES—UNWEPT, UNHONORED, AND UNSUNG

unbowed heads fell the bludgeonings of the Anti-Saloon League, The Methodist Board of Temperance, Prohibition, and Public Morals, Bishop Cannon, Mabel Willebrandt, and all of the hired tub-thumpers of that unhappy epoch.

Undaunted we kept on month after month and the attack never relaxed.

Then one day in the exchange room of the *World* I picked up some out-of-New York paper and I found a cartoon in which my figure had been used. It was not as anti-clerical as mine but the tall hat and the white tie and the long nose were there and he was labeled PROHIBITION.

Some other editor had taken his courage in his hands and come out against the dragooning crowd we were fighting.

And so, as public opinion changed, the more timid papers joined in with us and my puppet became a stock figure until along toward the end of the nobly intended experiment he became as standardized as Tammany's tiger or the G.O.P. elephant.

As his creator I have seen him change under my hand. He became steadily more furtive, more disreputable, crueler. And then, as the golden flood which once had nourished his veins was diminished, he became even more emaciated. No longer was he a dictator. He became snivelling and whimpering. He was broke. He, who once had browbeaten Senators, Congressmen, national conventions even, stood a patched, unshaven scarecrow holding out a battered tall hat for such largess as could still be wangled from credulous supporters. No longer was he a tyrant—he was simply an exposed humbug whose fall had nothing of dignity nor anything deserving of pity. And now he is *in extremis*. He lies on a broken pallet in a forgotten attic with his long, dank hair matted on his brow; his hollow, fanatical eyes burn in their sockets; the unshaven jowl has sunk to the contours of the bones; his clothes are in tatters and on the floor lie the broken tall hat and the skeleton of his umbrella. I shall miss him. He has been a good friend. Days when news furnished little, I could always take him out of his box and he danced to my tune.



HERE WAS IN THE BEGINNING—SOME NOT QUITE RESPECTABLE.

THE EFFECT OF PROHIBITION IS SURE TO BE AND SO IT SHOULD BE.

AT THE RESULT OF HIS INFLUENCE AND THE CONSEQUENCES HIS POLLOS LAY AWAY AND HE IS SUBJECT TO DEGRADATION.

ON THIS PAGE, FOUR VIEWS OF MR. KIRBY'S FAMOUS PUPPET

"The Kirby Corkscrews" by Donald Bull (Copyright 1988, 1995 by Donald Bull)

Patents and Notes on Inventors and Manufacturers

The next page shows the four Prohibition figure cap lifter and corkscrew patents known to me.

The Halvorsen patent is the earliest and I have not seen this bottle opener. It was assigned to the Sterling Die Casting Co. of Brooklyn, New York.

The design patent of the then Trumbull, Connecticut resident Alfred Flauder was assigned to the Weidlich Bros. Mfg. Co. of Bridgeport, Connecticut. The manufacturer's number 905 appears on the back of the spoon handle.

The figure in the casket was a design patent of Stratford, Connecticut resident Horace Bridgewater and was assigned to the Artistic Bronze Company of Bridgeport, Connecticut.

The last patent bears the closest resemblance to the figure created by Rollin Kirby. This latecomer (Prohibition had died over a year before the patent application) was invented by John R. Schuchardt of New York. On the underside of the umbrella we find the marks "Made in U. S. A., Pat'd" and "Negbaur, N. Y.". Schuchardt's son, a New Jersey resident was helpful in clearing up the "Negbaur" mark mystery. Harry Negbaur was a tool and die maker in the Dollin Die Casting Company of Irvington, New Jersey which cast the figures. The "Negbaur" name also appears on the parrot corkscrews which were the design patent of M. D. Avillar of New York (#78,554 issued on May 21, 1929).

Negbaur received many design patents from the 20s through the 50s for bill clips, pocket flasks, cigarette lighters, and other utensils. His cousin Hal Negbaur of New York knows very little about him other than to say that he was "always tinkering with something".

Many of the figures without turning head are marked "Demley". Schuchardt's son vaguely recalled that "Demley may have been the legal guy from Great Neck that worked with my father and the manufacturer".

The "Alas, Poor Mr. Prohibition" sheet reproduced at right was contained in each of the "Volstead" in a casket corkscrew.

BUT!—AS GLOOMY AS HE LOOKS—HE DOES A CHEERFUL JOB!

First—

—Note that Mr. Prohibition has "gone to pieces". There are three major parts. Remove them from enclosure—

Then—

Prize Complete
In Mailing Carton
ONE DOLLAR



To remove hat from neck—first, either use "Al" Our Cork-Screw for the "Al" operation—



Next, Mr. Prohibition's "L" spread stomach. Imagine! A Jiggerful in the drink!



How about the bottle cap? Here's the answer. Mr. Prohibition's "remedy-up" opens our bottle opener!



To keep the Grogger Ale from going flat—simply insert bottle opener and—pop! —The Cap!!!

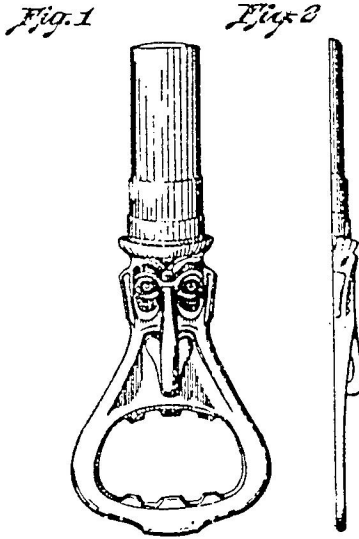
<p>Poor Mr. Prohibition's licked— We've got him on his back! He's trying hard to make amends Before he's in "the sack".</p> <p>Let's look him over just for fun, He may be used at that! There's nothing in that head of his— He's "screwy" in the hat!</p>	<p>His stomach now is changed a bit— It measures out the rye. A "Jigger-ful" each time it's used! Say! He's a useful guy!</p> <p>He kicks off caps with utmost ease We've got his cork in spirit! And when he passes on, dear friend— We know that we can "beer-it"!</p>	<p>Alas, Poor Mr. Prohibition Born July 1919 Passed Away— ?</p>
---	--	--

"The Kirby Corkscrews" by Donald Bull (Copyright 1988, 1995 by Donald Bull)

June 21, 1932.

O HALVORSEN
BOTTLE OPENER
Filed Dec. 10, 1931

Des. 87,212

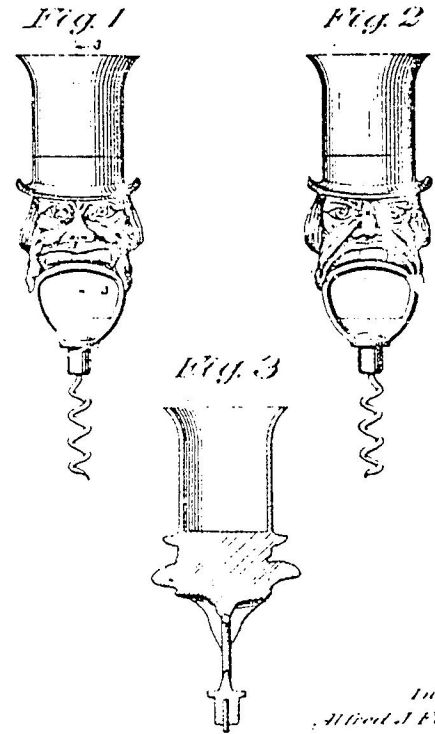


INVENTOR
O. Halvorsen
BY
Valen. Smith & James Loomis
ATTORNEYS

Aug. 16, 1932.

A. J. FLAUDER
BOTTLE OPENER
Filed June 22, 1932

Des. 87,567



Inventor
Alfred J. Flauder
By
Christie M. Newman
Attorney

Aug. 23, 1932.

H. M. BRIDGEWATER
COMBINATION BOTTLE OPENER AND DISPENSING APPARATUS
Filed May 14, 1932

Des. 87,618

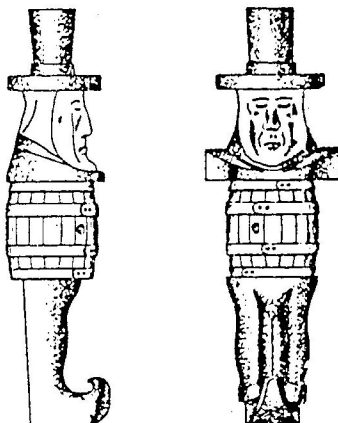


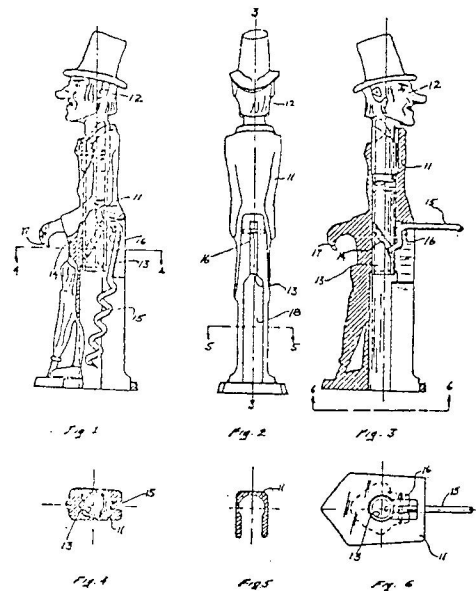
Fig. 2 Fig. 1

INVENTOR
Horace M. Bridgewater
BY
Maxwell Davis

Aug. 6, 1935.

J. R. SCHUCHARDT
NOVELTY BOTTLE OPENER
Filed Aug. 24, 1934

2,010,326

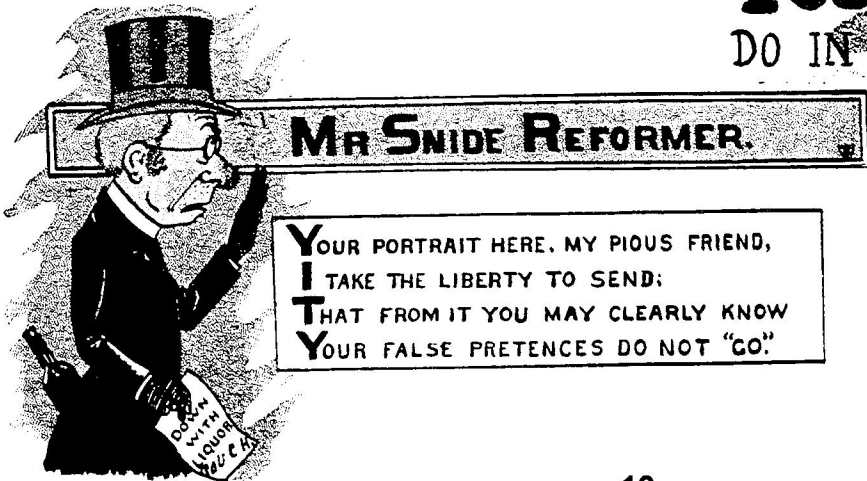
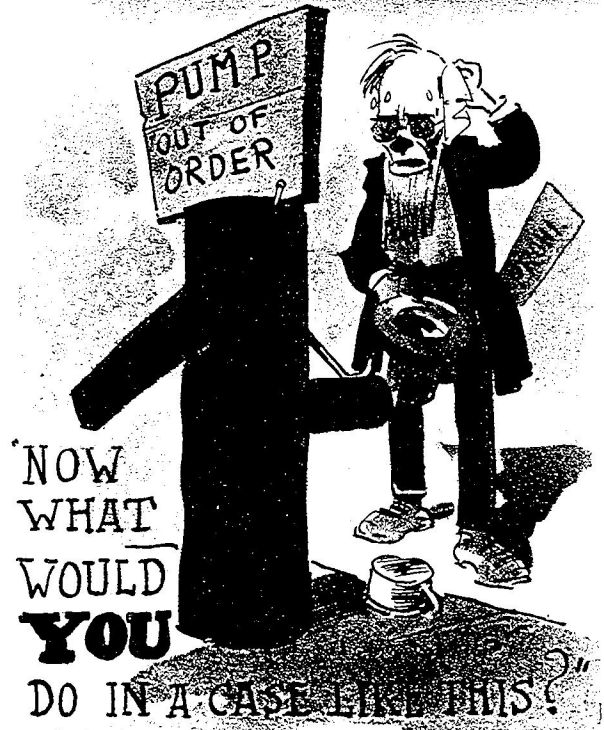


INVENTOR
J. R. Schuchardt
BY
Frank J. Dwyer
Attorney

"The Kirby Corkscrews" by Donald Bull (Copyright 1988, 1995 by Donald Bull)



The Prohibition figure was around long before the Volstead Prohibition era and the Kirby cartoon era. The English postcard at top left carries a 1908 postmark. The American postcard at right is postmarked 1910. And the "Snide Reformer" postcard below was copyrighted in the United States in 1905. Rollin Kirby's figure contains many of the elements depicted on these cards.

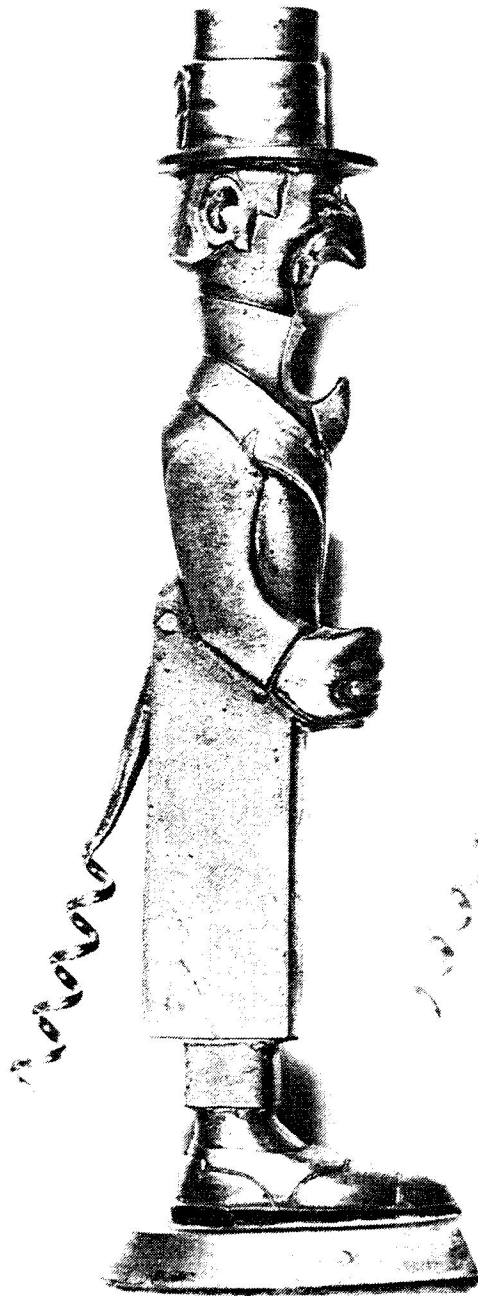


Do you have any "Kirby" corkscrews or openers not pictured in this Paper? Do you have any further information on the subject? Write: Donald Bull, 20 Fairway Dr, Stamford, CT, 06903

"The Kirby Corkscrews" by Donald Bull (3 Types Full Scale)



Schuchardt
Patent



Chrome
Kirby



Bronze Snifter
2 Cap Lifters

Please Help in Identifying Suspect "I-7"s
--

Hale Milano (an avid collector of type "I-7"s) is helping me to identify I-7s which might have been listed incorrectly. Please check your I-7s against the following list. If you have any listed please notify me (John Stanley). Please also note maker, color and type of metal if unusual.

If you have please CIRCLE make*	I-7	INSCRIPTION	SIMILAR TO
Vaughn Quick&Easy Keglined	45	Anheuser Busch-Dry Malt	
Vaughn Quick&Easy Keglined	73	Ballentine Beer-Ale Handy Way to Reorder	
Vaughn Quick&Easy Keglined	46	Berghoff Beer	
Vaughn Quick&Easy Keglined	74	Berghoff Brewing Corp. Fort Wayne, Indiana / Berghoff Beer	see I-6-46
Vaughn Quick&Easy Keglined	47	For Opening Brown Derby Beer	
Vaughn Quick&Easy Keglined	51	Genesee Beer-Ale	see I-6-16
Vaughn Quick&Easy Keglined	18	Haberle Congress Brewing Co. Syracuse N.Y. Congress Light Beer	see I-6-51
Vaughn Quick&Easy Keglined	19	Hamm's Smooth Mellow Beer	see I-7-52
Vaughn Quick&Easy Keglined	20	Hampden Mild Ale	
Vaughn Quick&Easy Keglined	22	Harvard has what it takes	see I-6-72
Vaughn Quick&Easy Keglined	80	Meister Brau "The Beer"	see I-7-21
Vaughn Quick&Easy Keglined	69	Famous Narragansett Lager & Ale	see I-6-31
Vaughn Quick&Easy Keglined	35	Red Top Brewing Co. Cincinnati, Ohio / same	see I-6-62
Vaughn Quick&Easy Keglined	75	Regal Beer / same	see I-6-36
Vaughn Quick&Easy Keglined	57	Regal Pale the most refreshing thing on ice	
Vaughn Quick&Easy Keglined	58	for opening St. Claire Beer America's finest	
Vaughn Quick&Easy Keglined	37	Schaefer America's oldest lager beer	
Vaughn Quick&Easy Keglined	61	Trommer's Beer It's all Malt and Hops	see I-6-66
*if "make" on reverse of opener is not one of these three please explain. Also if copper or some unique metal please note			

January New Members, Renewals, Address Changes & Corrections
--

Just For Openers now has 291 members (New Members: Numbers 750-763)

Member Name, (Spouse) Membership Number	Street Areas of Interest	City, State	Zip	Phone (Sponsor of New Member)
Arber, William, (Barbara) 751	All Openers & Figurals	11162 Broadway St (Bob McNary)	Alden, NY	14004-9515 (716) 681-4833
Archer, John 619	Types "A", "B", & "P" and Other Wisconsin Openers	7932 45th Ave	Kenosha, WI	53142-4509 (Address Change)
Buske, Ryan 762	Corkscrews	53606 240th Ave (Cymba WWW)	Pocahontas, IA	50574-8535 (712) 335-3884
Caton, Matthew, (Karen) 722	Rochester, NY Breweriana - Cans, Bottles, Trays, Openers, Crowns	321 Tobin Rd	Henrietta, NY	14467-9720 (716) 482-1061 (Address Change)
Ellison, Dana, (Catherine) 763	Any Advertising Openers	PO Box 298	Ludlow, VT	05149-0298 (802) 228-3196
Friedman, R Seth 756	Beer Advertising Openers, Rubber Stamps, Zines	PO Box 170099	San Francisco, CA	94117-0099 (415) 668-1781 (Cymba WWW)
Hoffman, David, (Jami) 760	Beer Advertising Openers	929 W Broad St	Williamstown, PA	17098-9501 (717) 647-9161 (NABA)
Hopper, William, (Laurel) 758	Old Corkscrews-Steel, Wood or Figural-Golf Openers	3505 Carol Ct	Yorktown Heights, NY	10598-2201 (914) 245-0034 (Don Bull)
Johnson, Arthur, (Eileen) 213	"M-3" "Slide-Out" Openers & "M-73" "Slide-Out" Opener/Corkscrews	200 Elmwood Ln	Naples, FL	33962-3202 (941) 775-6123 (Address Change)
Kopp, Richard, (Martha) 753	Beer Advertising Openers & Other Beer Advertising	14419 Woodcrest Dr	Rockville, MD	20853-2336 (301) 460-4272
Kroll, Vic, (Jackie) 433	Beer Advertising & Cigar Box Labels	3451 Nighthawk Ct # 433	Punta Gorda, FL	33950-6675 (941) 764-7587 (Address Change)
Larson, Don, (Jackie) 759	Beer & Pop Openers, Beer Trays	213 N Campbell Ave	Beloit, KS	67420-2427 (913) 738-3197 (Don Bull)
Loy, Greg, (Karen) 752	Openers, Foam Scrapers, Trays & Painted Label Bottles (Ed Kaye)	316 Lynwood Ave	Ottumwa, IA	52501-4938 (515) 682-6779
Petro, Andrew, (Linda) 750	Beer Openers	39 Smithfield Vlg	East Stroudsburg, PA	18301-9054 (717) 421-4486 (Larry Biehl)
Pitsch, Ralph, (Ruby) 754	Beer Openers & Novelty Openers	2814 Wedemeyer St	Sheboygan, WI	53081-6738 (414) 458-2525
Raposo, Michael, (Leigh) 506	(Address Change)	RR 5 Box 234	Gorham, ME	04038-9107 (207) 727-4052

January New Members, Renewals, Address Changes & Corrections
--

 Sherman, Scott, (Cindy) W5268 Quarry Rd Appleton, WI 54915-8330 (414) 954-1168
 757 Beer Advertising Openers

Sourapas, Steve 1212 9th Ave W Unit 2 Seattle, WA 98119-3445 (206) 282-9922
 574 Pre-1930 Hires Root Beer Memorabilia, Hires M-2 Opener (Address Change)

Staley, Tom PO Box 713 Micanopy, FL 32667-0713 (904) 466-3801
 755 Corkscrews-General (Don Bull)

Stanley, Paul, (Virginia) PO Box 26 14732 French St Damascus, OH 44619-0026 (513) 537-2792
 761 Pepsi-Cola Openers (Pepsi-Cola Club)

Open Letter to the JFO Membership from Steven Parks #711
--

I am a relatively new member (#711) to JFO but I am impressed and appreciative of both you and your organization! Out here in the great Northwest (Seattle area) we have limited availability to both openers and information that other members enjoy in more "Breweriana friendly" parts of the country.

Thankfully, with the wonderful articles, information and auctions that the newsletter supplies, I am gaining much knowledge, and openers, to further my collection and increase my insight into the history and origins of our chosen obsession.

You, John Stanley, deserve our utmost thanks and admiration for your diligence as our current editor of the JFO newsletter. This publication is first rate!! Your correspondence back to me has been timely and concise. Your auctions are always a joy to participate in and are always administered with perfection. We all benefit from your dedication to us members and to the "sport" of collecting.

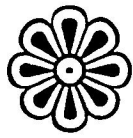
Your pay is probably nil. Your hours are definitely long. Your headaches are most likely frequent. Your desk must be filled with "our" stuff. Hopefully this letter (along with many members that no doubt feel the same way as I do) will give you satisfaction knowing you are respected, highly regarded and much needed by this organization.

Thank you and keep up the good work!!
 Steven Parks

Thank you Steve for the kinds words and yes many members have written expressing their thanks. Your letter is great and as you state I do my job as editor for the love of collecting openers and corkscrews.

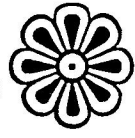
"I Thought I Was The Only Person In The World Collecting Openers"

Your editor started collecting openers in 1977 and I thought I was the only person in the world collecting them. It was not until 1982 that I found out about JFO. This seems to be how the majority of JFO members started. They thought they were the only ones in the world collecting openers. As 1995 comes to a close new JFO member Seth Friedman of San Francisco thought he was the only person in the bay area collecting openers and actually produced the newsletter shown on the next two pages. Fortunately for Seth Don Bull, Ed Kaye and many others have found out a tremendous amount of information about openers and corkscrews.



THE OPENER

Issue #1
Summer '95



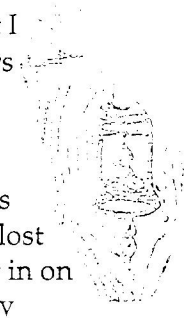
The World's Only Bottle/Can Opener Collectors' Zine

Welcome to the First Issue

It's becoming harder and harder to find something new to collect that hasn't been priced way out of reach yet. The *trackers* (collectors of 8-track tapes) and many others seem to have a field day at most thrift stores, while others looking for Fiestawear or lunchboxes might have better luck at expensive antique shops instead of thrift stores.

I started collecting bottle openers purely by accident. While living in Buffalo I came across the most intriguing bottle opener. It was my first find and it's still my favorite. It's a wire loop styled opener with a single straight handle, simply labeled "Trommer's Malt Beers."

I was so intrigued by it that I wondered if I could find others like it. It was of course a rare find (one that has not been repeated) but it started me on a long search for unique openers featuring names of long since lost brands of beer. I feel as if I got in on the ground floor. Only recently have I started seeing openers priced at three or even *four* dollars. It seems outrageous but I'm sure there's still plenty to be found. While I don't welcome speculation or competition, I do look forward to the camaraderie of shared interest. If you are at all interested in trading or selling (for a normal price please) then maybe we can exchange trade lists.



Who is Vaughan

So who is this legendary VAUGHAN? For all you neophytes out there, practically every opener in my collection (and probably everyone else's collection) is made by this mysterious Chicago-based company. A few years back I foolishly called up Chicago telephone information asking for a listing. I somehow thought that I'd be connected with a receptionist that would *just love* to send me an illustrated catalog of all their customized beverage premiums.

Well, that call turned up a whole lot of nothing, but there's gotta be a catalog out there somewhere. When all these independent breweries were in full swing there must have been some sort of catalog or sales sheet that described all the different styles of openers that were available. This, to me, is the Holy Grail of collecting. If *anyone* out there has something of the sort I would immensely appreciate a xerox of what they've got.

What's the History of Bottle Openers

The one thing I haven't been able to do is to date these damn things. There are obviously two distinct styles. The "wire" style of opener, formed out of thick steel tubing which is then stamped with the brewery's logo. Then of course the more famous flat sheet metal kind, stamped out from thick sheets of steel. The wire style obviously predates the sheet metal, but by how long? When did they stop making the wire style? When did they start making the sheet metal kind?

Without any kind of documentation, "age dating" these things seem like a monumental task. The only other way I can think of is to determine the dates that some of these breweries were functioning. Then maybe some of the more ephemeral openers can be dated. Has anyone dated any opener yet? At this point I'm at a complete loss.

The Trade List

Unfortunately I don't have a complete list of my collection yet but here as some openers that I have duplicates of that I'm willing to trade. These are available for trade only (not for sale). I only have one or two extras cuz I don't usually buy openers that I already have. If you're at all interested in trading, tell me what you've got and if I don't already have it I'll send you what you want.

CANCO FOR BEER IN CANS MARKED KEGLINED

Long sheet metal with can opener on one side and sideways bottle opener on the other

FALSTAFF AMERICA'S PREMIUM QUALITY BEER

Reverse: FALSTAFF BREWING CORP/ ST. LOUIS, MO./ EKO - CHGO

Very short flat sheet metal with traditional can/bottle opener arrangement

LUCKY LAGER AGE-DATED BEER

Reverse: IT'S LUCKY when you/ live in America/ ECKO-CHICAGO

Short flat sheet metal with traditional can/bottle opener arrangement

OLYMPIA BEER "It's the Water"

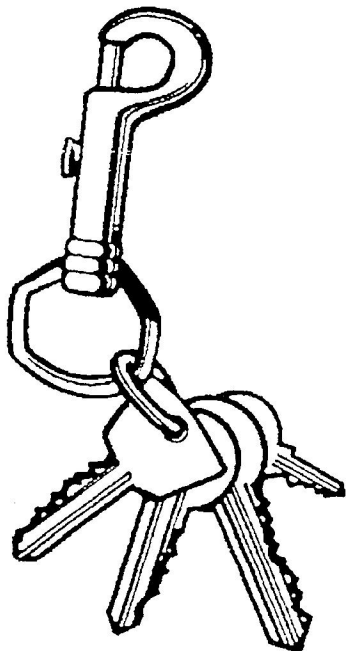
Reverse: *OLYMPIA BEER/ *"It's the Water"/ CMI/ App.-Vaughan U.S.A. 58 Pat. Pend

Short flat sheet metal with traditional can/bottle opener arrangement

COORS America's Fine Light Beer (R)

Reverse: COORS America's Fine Light Beer (R)

Short flat sheet metal with traditional can/bottle opener arrangement



The Opener was concocted, written, designed, and laid out between August 3 and August 5. It took about five hours total to produce, and it probably looks it. It just goes to show what you can do with the right equipment, namely a 486 PC, Microsoft Word, PageMaker 4.0, and an HP 600 dpi laser printer.

The Opener is intended for amateur bottle opener collectors. All speculators and dealers and kindly asked to off. The last thing we need is a speculators' market that raises prices to unrealistic proportions.

Additional copies of *The Opener* are available for 25¢ plus a long SASE from:

Mr. Friedman

313 2nd Ave., Apt #2

San Francisco, CA 94118

(415) 668-1781

13th Cornhusker Breweriana Show (Omaha,NE) Sept 28th-30th

Each year in September a really great breweriana show is held in Omaha, Nebraska. JFO member John Mlady is one of the sponsors. It's a great show for any kind of breweriana, including openers. JFO members Ollie Hibbeler and Don Whelan attended. Ollie sent me the following write-up about the show.

Shirley and I left home Thursday morning for Omaha. We stayed off the interstate and flea marketed our way thru rural Missouri and Kansas. I picked up a P-19-UL Heim's and a B-2-7 Krug plus miscellaneous "E" type beer and soda openers. Stayed south of Omaha Thursday nite and arrived at the Holidrome in Omaha at 10:00 A.M. The desk clerk allowed us our room early. I started room-to-room before noon. I found an O-14-1 Storz and 4 H Types I didn't have. Also a B-18-146 Schiller, B-32-XX Soda and about 8 different plastic openers that I didn't have (Eat your heart out Art!). Went to the hospitality room, where they had 4 different beers on tap with soda and unlimited snacks. There I ran into Don and Cora Whelan, who we knew were coming. After we had some beer and reminisced about our JFO show in St. Joe, MO., Don and I continued room-to-room where we talked to a nice group of "Cornhusker" collectors. We both bought a couple of more openers before returning to our rooms.

Friday nite we four attended the "Brats & Beer" party at the hospitality room. They also had a Micro Beer event at the same time. Saturday morning Don and I were in the show room at 7:30 A.M. where we shared a table. There were over 220 tables full of "STUFF". Almost immediately I found a fellow from nearby Lincoln, Nebr. with a box of approximately 300 to 400 openers which were kind of dirty. The openers were all "C", "D", "E", "G", "H" and "I" types. I asked him how much his openers were. He replied that they were a \$1.00 each! I went through the whole box and picked out 32. Then I went and told Don - NOT BEFORE! Was I fair? He later told me he got quiet a few out of the box. Throughout the day I bought a E-14-UL Budweiser, B-23-142 American, E-5-43 Stag, G-35-UL Port Arthur Silver Spray, F-1-2 Fox Head, H-1-22 Golden Creme, M-97-UL Michelob Dry, N-8-1 Schuster/Rochester, Minn., N-39-UL Metz and 6 sodas. Can't remember all of Don's "finds" however I saw his M-19 Anaconda, C-1-Edelweiss (Mint) and some very good "B" types. He said that he found no Schlitz openers. Saturday afternoon Shirley and Cora went to the gambling casino in Council Bluff, Iowa. YES - they both lost. Will they ever win?

Saturday nite we four went to their delicious buffet dinner with open bar. The new "Cornhusker" officers were introduced. The world is changing! The top 3 officers of the Club are ladies! However the treasurer is a man. (Can this be right?) A free raffle was held afterwards with some very nice prizes. I won a nice enamelled Robin Hood beer glass. Maybe I should go to the casino. Back to the hospitality room for a "nite cap" and good-byes. Then to bed - no problem sleeping. On the way home we stopped at several shops, however I did find an A-35-24 Heim & An-Busch and a P-8-UL Hund & Eger. What a great week-end! Good friends, good beer and good openers. Do I have that in the right order? We are going next year. After all, it has to be better. Three nice ladies will be running the show. Everyone made us feel welcomed. See you there!

(Editor's Note: The M-19 Anaconda is not a beer opener. Bill Pattie reports that it is from a manufacturing company in Anaconda, MT. The company does not make beer.)

Don Whelan adds that Omaha was real nice for a regional show with at least 15 states represented and from as far away as California.

13th Cornhusker Breweriana Show (Omaha,NE) Sept 28th-30th (Continued)

Don continues, I got a few openers but no Schlitz - nothing overly exciting. Ollie got one real good opener (at a very reasonable price) that I walked by - a N-8 Schuster. He gloated all day. He even accused me of drooling on it!! Ollie has probably already told you this. However there is more to this story - later.

The next weekend I was in St. Louis visiting my son and got a nice D-15 (Red Feather) at an Antique Mall for \$65. Since I didn't have one I was quiet pleased. Also I recently picked up a P-70 Minneapolis Brg for \$40. So I win some, lose others.

My only comment is that you were both winners. A lot of good openers are still out there.

"OPENER/CORKSCREW DISCOVERIES"

Art Santen checked with Anheuser-Busch Historical Department and no records could be found for an A-B Stove Co. in Battle Creek, Michigan. A nice little opener but apparently not beer related. No one responded about the M-19 marked Wolter's / Pilsener.

In the last issue I talked about the Hillsville, VA Labor Day Weekend Flea Market. Roger Jarrell and I had left wondering what good buys we were missing. Well Hale Milano was there the same day and he must have gotten everything we missed. Hale writes, "His grandfather has a cousin who used to be mayor of Hillsville. We (the family) took a trip down and came up with quiet a few openers". He picked up 62 openers(Hale enclosed a photograph) including the following, 6 "A"s (all non-beer), 8 "B"s (5 non-beer), 9 "C"s (1 non-beer), 6 "E"s (1 non-beer) 1 "G", 2 "H"s, 25 "I"s (12 non-beer), 3 "J"s, 1 "M-3" (Theo De Witt) and 1 O-8 (NEHI). Included in the "A"s was the Chero-Cola hand holding a bottle, an A-18 fish, an A-24 Nu-Grape, an A-33 fish spinner, "J-7" Coors, and 24 "I-7"s Hale's favorite type. As Hale wrote, "Never met an "I-7" that I didn't love!". Probably the best opener Hale found was near the end of the day at an antique mall. It was 10 minutes before closing at 5 o'clock. Hale says, "There were two openers, an overpriced "I-7" and an E-26-1 Virginia Brew Co for \$2.00!" The E-26 Virginia is a super tough type. I want to know if you bought the "I-7". I guess next year I will not be in a big hurry to leave. Congratulations Hale on a great haul.

Twice a year Charlotte, NC has a big "Antique Extravaganza" and I attended in November. There were not a lot of quality openers but I did buy a M-3-20 American (EX), an A-13-7 Tannhaeuser (G) and an A-13-13 Hauck. I hardly ever see the A-13 style anymore and could hardly believe that I would find 2 "Cars" and they would both have beer advertising.

Bill McKenzie traded a local dealer out of 5 Mint-In-The-Box O-4-30 Goetz wall mount openers. The dealer had bought the 5 openers at yard sale in St. Joseph, MO from a former employee of the brewery. Bill is keeping one for his collection, has traded one off, has placed another one in the current auction and finally has two more that he is willing to trade. Please check out Bill's want ad in this issue. He is looking for "I-7"s he needs for his collection. Most O-4s are very hard to come by. The most common one is the O-4-3 Gibbons. I have never seen an O-4-30 up for sell or trade, so here is a chance to get a tough opener.

Keep those letters about finding openers and corkscrews coming in. It is always an interesting topic to share with the membership.

Montana Expedition by Bill Pattie

Bill Pattie is an avid Montana collector and wrote the following article about his fall trip to Montana. I went to Helena, Montana in October to attend the fall roundup (Big Sky Breweriana Show). It is a day and a half drive from here (Snoqualmie, WA). My wife and I drove straight through arriving in Helena in time to hit a couple of Antique Malls. We spent Friday evening in the motor home in the yard of John and Janet Goss who are BCCA, ABA, Rustybunch (John's Chapter Pres) and Janet's a JFO member. They were hosting the event and besides us had a steady list of visitors all evening.

The next morning it was off to the Montana Fairgrounds for the show. Had a great day swapping Breweriana and information with Montana collectors. The Quinlans (also JFO members) from Great Falls were down and we were able to do some trading. Several other younger collectors who I correspond with and trade with were also there as well as all of the big time Montana Breweriana enthusiasts. After the show Lyla and I hit a couple more Antique stores and I added more Montana stuff including a couple of openers. Then it was back to John and Janet's for a Pizza feed and an evening of visiting and trading as Janet and I got down to serious swapping. Despite my most ardent pleading I couldn't talk her out of her C-13 Old Fashion but we did work some other swaps. We were having so much fun that we were soon joined by Steve Armstrong of Orfino, Idaho and Nick Johnson from Spokane, WA who were also house guests. They didn't have any Montana stuff but I had Washington stuff they wanted so I was able to recoup some of my afternoon spending. Late to bed, Lyla played out early, but up early in the morning and Janet took Lyla and I yard shopping around Helena. Lyla found some stuff and I picked up a pre-pro Lorelei bottle to make it all worth while.

We left Helena around noon and headed for Bozeman hoping to catch two big (and expensive) Malls before closing. We succeeded in arriving in time and accumulated more goodies. Then it was on to Livingstone where we spent the night. Up early to do the town and had a great day. Turned up a local opener that I had been hunting a long time as well as 4 mint flattop cans. I haven't added any cans to my collection for a long time but couldn't resist these. One was a Rheingold which I am using to display my K-3-1 opener. From there it is 35 miles to Big Timber, my wife's home town. Parked in her brother's yard and spent a day relaxing and visiting. I made a contact with a dealer/collector in Lewistown, Montana who had a collection of Montana openers that I have coveted for some time. As his health is declining he said that he had arrived at a point where he would consider an offer for the whole collection. I said I was interested and we made a date for me to have a look.

A day later Lyla and I took off for Lewistown and antiqued our way to the geographical center of Montana (Lewistown). Jerry Bussey the collector had about 50 pieces mostly A's and B's. I decided that I had to have them and we agreed on a price of \$12.50 apiece or about \$700 for the lot. I felt that this was a very fair price considering the street value of the pieces (probably close to double this). I think he gave me a break on the prices because he knows that I am a serious collector and that a considerable portion of the openers would go in my collection rather than for resale. I assured him that if he got too lonesome for them he could call me up and talk to them about their new home. Nice man - great deal. As it turned out about 30 pieces went directly into my collection and the remainder on to my Montana trading boards where hopefully they will generate more pieces for the collection.

Montana Expedition by Bill Pattie (Continued)

We then returned to Big Timber where I spent a day gloating, cataloguing, and polishing. Then it was time to travel on to Billings for Homecoming weekend at my wife's alma mater Rocky Mountain College and of course to do all the Antique stores of Montana's largest city. We hit a big regional flea market/collectors show on Saturday morning with fellow Montana Breweriana-Historian and collector Jim Peters admiring his fabulous collection of Billings Brewery stuff and Montana beer trays. We then returned to Big Timber for a day before we headed west to return home. We hit Butte, Anaconda, Deer Lodge (tried unsuccessfully to contact JFO member Don McDermid), Missoula, Polson (where we visited the fabulous collection of Steve Lozier), Kalispell, Whitefish (spent an evening and overnite in the yard of Leon Gustafson who has perhaps the 3rd or 4th largest collection of Montana Breweriana in the state). Then it was on to my hometown Troy, Montana for more visiting and collecting. From there it is an easy 2 day drive to Seattle.

While I was busy collecting my openers and "stuff", Lyla was busily filling the motor home with kitchen antiques to fill her recently renovated Kitchen Queen and replicated pioneer kitchen. We had long ago reached the point where she had to sleep with whatever she added, fortunately for me openers don't occupy so much space. We arrived home happy, broke and it was time for her to get back to work. The total outcome of my collecting endeavors added up to over 100 openers to my collections and trading stock. Also about 50 other pieces of Montana breweriana. Since returning home most of my spare time has been invested in recording and reworking my displays. Like everyone that collects I'm out of space again and hope to figure out some new schemes after the holidays.

Thanks for an excellent diary of your Montana "vacation". It's nice to know that a lot of openers are still out there waiting to be found by JFO members.

Bob Nugent Corkscrew Collection Sold

Not to be outdone by anyone Don Bull, Joe Paradi and a third avid corkscrew collector bought Bob Nugent's collection of 3700 corkscrews. Bob had decided it was time to sell. Don picked the collection up on Thursday and the 3 buyers spent Friday from 6AM until Saturday morning at 1PM, Saturday from 8AM until Midnight and Sunday from 8AM until Noon dividing up 2200 of the corkscrews. They already had the other 1500. Don's want list was not very long before this and I can only assume it is very small now.

Auction of Corkscrews (Johnson City, TN)

From AntiqueWeek a report on a Johnson City, TN auction included the following. Another unusual adult item (it was mainly a children's auction) was a corkscrew collection mounted on a 3-by-5-foot pegboard frame. While the 75 corkscrews were for the most part American, some were French, German and British. Manufacturers included Kirby, Barnes, Williamson, Davis and Haff. Most of the screws were for corked beer bottles, but a few were used on perfume and medicine bottles. The bidding began at \$1,000 and narrowed to a tug-of-war between two Michigan friends - one in Detroit (must be Herb Danziger) on the telephone and the other onsite. Lehr Roe from Dundee, Michigan had the winning bid of \$1,900. Lehr who is a member of the International Correspondence of Corkscrew Addicts, said that the rarest item in this particular collection was a Barnes patent double screw which contained one small cork screw inside another.

History of the "E-8" Autoyre Company of Oakville, CT
--

Paul Gauvin played detective and produced the following article about the Autoyre Company of Oakville, CT. Many thanks to Paul for his fine job. Persistence does pay off. The E-8-Autoyre was mentioned in the last issue under "Opener/Corkscrew Acquisitions".

My first thought was that this would be relatively easy, since Oakville is so small a town. First thought was wrong. I began by researching a set of Thomas registers that seem to take up space in the office. No Autoyre to be found but there was a wire stamping company in Oakville named Ferre Formed Wire Products. Obviously a predecessor, right? Wrong. After several attempts to talk with someone who was willing to talk to some crazy jerk calling about "bottle openers", I finally talked to a Mr. Boileau, who told me that he had never heard of the Autoyre Co. So, it wasn't going to be that easy. Well armed with my bosses Watts line I set out to get whatever information I could. Called information for the telephone number of the Town Hall in Oakville. Well the operator told me that there is no town hall in Oakville, because there is really no Oakville. It is actually a part of Watertown.

Armed with the number for Watertown's Town Hall I placed a call to the Town Clerk's Office and asked to speak to someone fairly old. The lady who answered informed me that she was considered old, and I told her she would do. I said that I was trying to get information on the Autoyre Co. She promptly corrected my pronunciation of Autowire, and proceeded to tell me that her dad had been a foreman there until the company moved to Chicago. She further suggested that I contact the Watertown Town Historian, Mrs. Crowell. She provided the phone number and I went back to the Watts line. Mrs. Crowell said that she remembered the company and said that the society had numerous products on display that they had manufactured. None were bottle openers, however, mostly wire formed towel bars and the like. Mrs. Crowell said that she would endeavor to get me whatever information was available from their records (she sent Paul the following newspaper article).

The beginnings of the Autoyre Company business go back to about 1890 when Joseph H. Baird opened a small plant on the corner of Main St. and Riverside Street for the manufacture of tumbling barrels and wire-forming machinery. Charles L. Warner, Burton H. Warner and Robert H. Warner associated themselves with Mr. Baird at this time, and the business prospered and grew. Inability to secure land on which to make necessary additions to the plant resulted in the split-up of the business, the Baird Machine Company moved to Bridgeport, Conn., and taking with it both of the lines they had originally started in Oakville. The Autoyre Company was incorporated at this time, 1912, to manufacture a line of products that could be made on the old concern's wire-forming machines. In peace times this factory turned out fruit jar trimmings, bottle openers, bath-room fixtures and countless useful household articles. In the 1950's The Ecko Company from Chicago bought out the Autoyre Company and in a few years moved all of the machinery out. The building has been taken over by several branch manufacturing companies.

A 1951 ad says, "For half a century now this company has been proud to be a part of this pleasant New England community. In peace or in wartime....making a soap dish or a piece of ordinance....first consideration has always been given to the quality of its products, and to the maintenance of a high quality of industrial citizenship".

Paul adds that Mrs. Crowell has promised to try to find further information if any is available. A catalog would sure be nice! Thanks again Paul for the great work.

Spouse's Corner

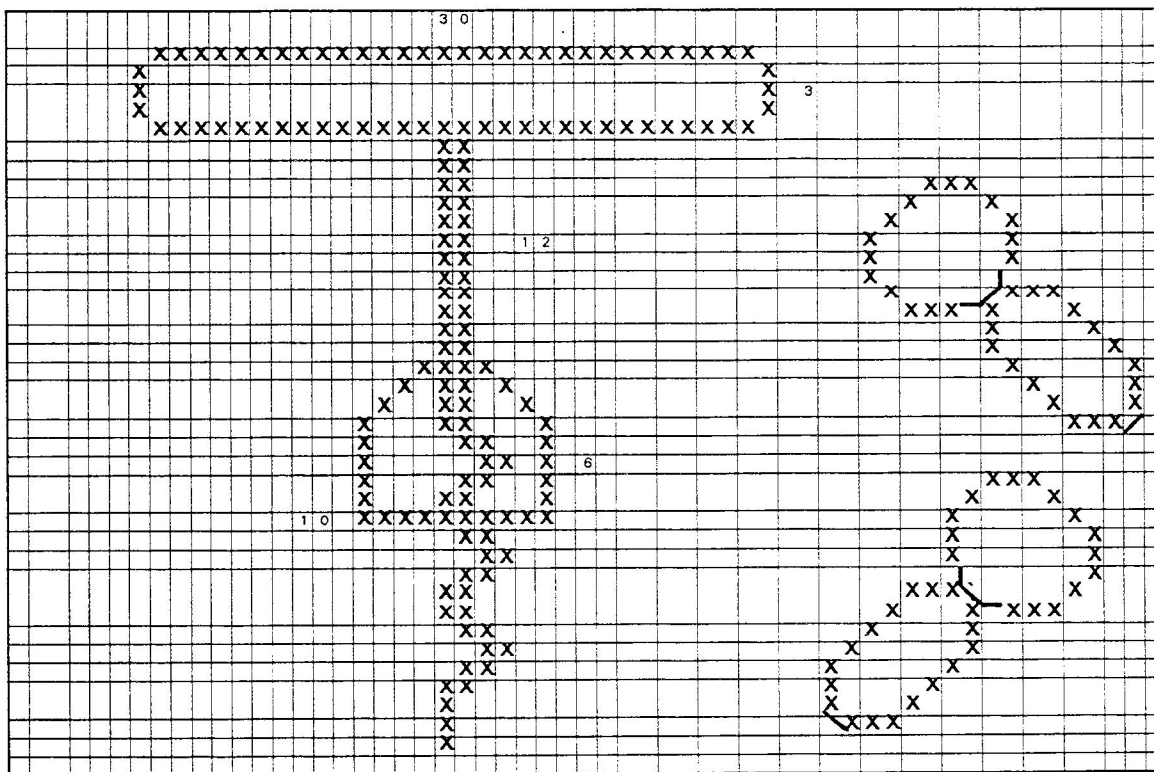
by Pat Stanley, the Editor's Spouse

A quick review of my Spouse's Corner file produced only 4 more remaining responses to the questionnaire completed by JFO spouses.

As Christmas quickly approaches, my creativeness seems at a lull, so it seemed a perfect time to include the cross-stitch patterns I designed for door prizes at the 1991 JFO Convention held here. If anyone is going to do some handy work, it most likely will be in the chilly nights of winter, while our spouses spend hours looking at shiny little objects for hours on end.

As I flipped through the file, I also discovered a little bright yellow note dated 5-1-95 from Dale and Florence Deckert. It was addressed to John, but given to me to include in Spouses Corner in July (What month is this??). In it, the Deckerts asked that we tell everyone how much they wanted to go to the Convention this year because they always have such a good time with all the friendly people. They thought it was nice to be remembered by all those who signed a card to them between trading openers around the clock.

Sounds like they should be in Chicago (Lisle) in April! Once you've attended one convention, you always feel a big void if you miss one. You can not get this wonderful group out of your mind the whole week of convention. You know you have missed some wonderful times and some wonderful openers. Which you cherish most, the people or the openers is obvious as you say your good-byes 'til next year.



Since this graph was imported, there may be more than one stitch in a square.

Limited Edition Cast Iron Wall Mounts by Dale Deckert

Dale Deckert wrote the following letter promoting his sale of 12 new cast iron figurals. All 12 have the FBOC type and date of issue cast into the backside. Dale's viewpoint about finding openers are for FBOC cast iron wall mount openers. About 20 to 25 of the FBOC openers are very hard to find and Dale is trying to keep interest in the club by producing these new zinc openers. Any questions or comments should be sent to Dale.

Dear Fellow Club Members:

In the past couple of years I have noticed many Club Members (FBOC Members) losing interest collecting bottle openers. A surprising number are selling out. Apparently, many are feeling like it's a waste of time to look for anything extraordinary. I have bought out many private collections myself and have gone as far away as Denmark, England, Germany, Canada, and India just to find anything different to add to my collection. I have found numerous manufacturers that have discontinued making openers altogether and was fortunate to purchase their surviving stock. What I am saying is, it's becoming more and more difficult to find any manufacture willing to make a quality opener at all, anywhere.

In fact, there have been a number of new collectible possibilities attempted by manufacturers that have never really gotten off the ground and the whole industry seems to be discouraged. I have personally purchased several new collections that were never circulated properly to create the value I believe they deserve (maybe someday..?)

What I'm about to do, may be a mistake for me, but possibly very good for other collectors. I have found a very old foundry, professionally knowledgeable in the art of making zinc productions. I have made a deal with them to be the sole distributor of bottle opener productions. They would be artistically painted and baked-on. The manufacturer assures a collectible product. You could look at it being similar to a "LIMITED EDITION" or "FIRST DAY ISSUE" of high quality productions starting with all of the preppies. Other hard to find and desired openers would follow. This would at least give many older collectors and new comers alike the chance to own an affordable replica of many very expensive and rare masterpieces.

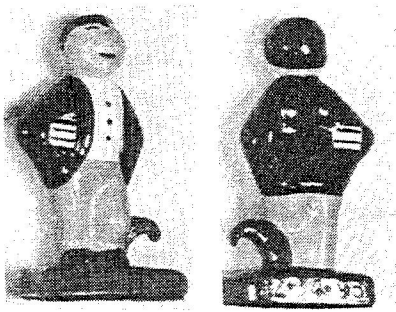
These will be an attractive addition to anyone's collection and I will make an attempt to make them even more special to members. I have an idea to enshrine the history of the pieces and any information as to why they were made, possibly on a plaque to holster the piece itself? You will have to let me know if this would be desirable.

From time to time I'll let you know of manufacturers and my progress and future plans. When molds are complete and we are production ready I'll provide you an exact price for the preppies. My plans are to create a catalog series called FZ# meaning Figural Zinc to distinguish replicas from originals. Meanwhile if you would like to order, the price is \$100 each or all 12 pieces for \$1000.

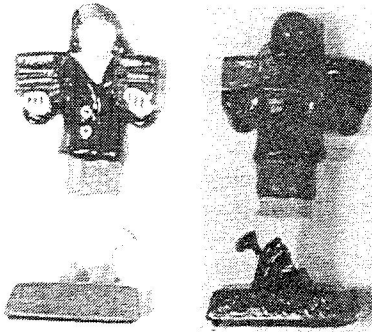
Thank you for your time and good hunting.

Dale Deckert,
4087 Lake Conway Woods Blvd
Orlando, FL 32812
(407) 859-1543

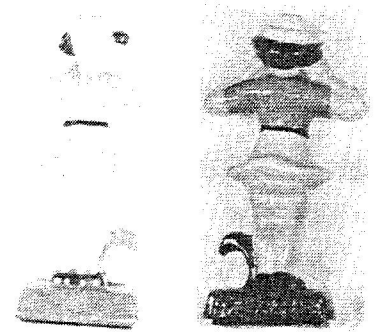
Limited Edition Cast Iron Wall Mounts by Dale Deckert



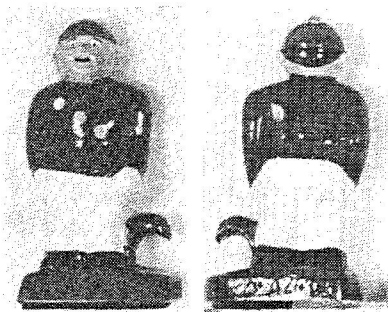
FZ-34



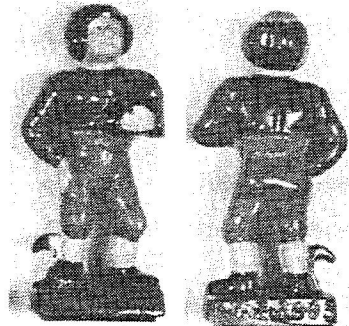
FZ-35



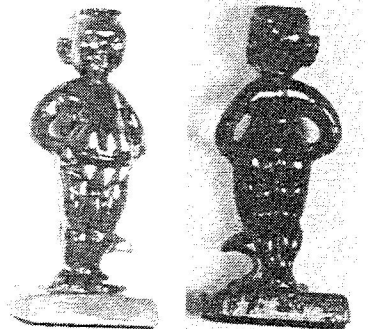
FZ-36



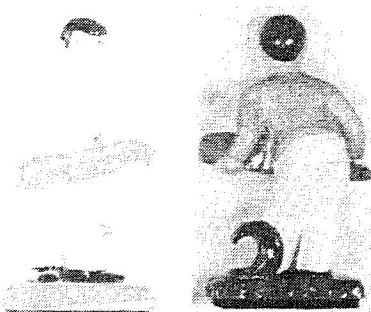
FZ-37



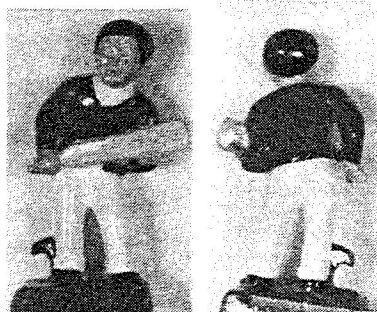
FZ-38



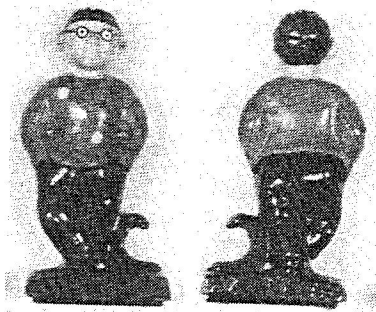
FZ-39



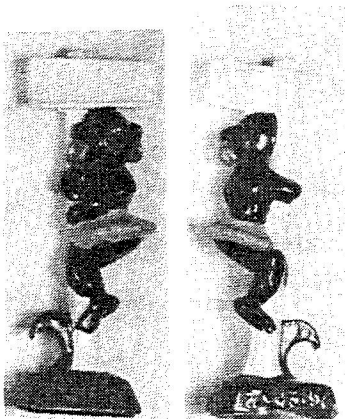
FZ-40



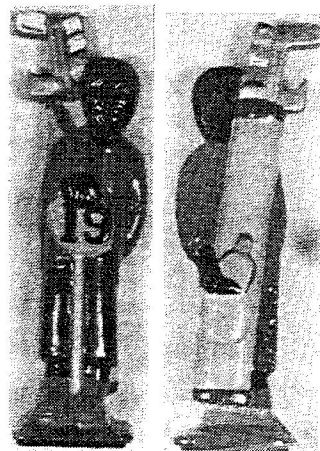
FZ-41



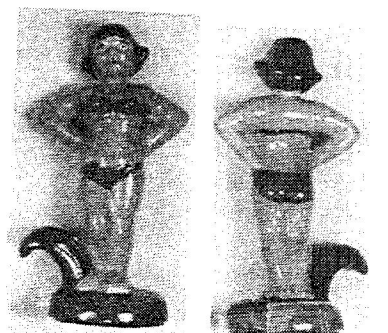
FZ-42



FZ-43



FZ-44



FZ-195

AUCTION NEWS

Joe Cardone's Auction. Joe Cardone has been running monthly auctions since JFO started in 1979. He usually offers between 200 openers/corkscrews each auction. The main emphasis is on beer advertising openers. There is no charge for the auction. Anyone interested or anyone wanting Joe to sell (20% commission) their collection should contact:

Joe Cardone, 1833 Rosemont Blvd., Dayton, Ohio, 45420

(Joe Always Needs Openers To Sell)

If you do receive Joe's auction, please try to bid on something. Joe will send you the next auction as long as you are an active bidder. If you do not bid, he will not send you the next auction.

Lynn Geyer's Advertising Auctions are offered twice a year. The main emphasis is on Breweriana (some openers). The cost is \$20.00. Contact Lynn Geyer at Advertising Auctions, 300 Trail Ridge, Silver City, New Mexico, 88061 (505) 538-2341

Fink's Off The Wall Auctions. The main emphasis is on Breweriana (some openers). The cost is \$18.00. Contact Don Fink at Finks Off The Wall Auctions, 108 E. 7th St., Lansdale, PA, 19446 (215) 855-9732

Rocky Mountain Brewery Collectibles (RMBC) has an auction about 4 times a year. Some openers are available. RMBC, PO Box 242, Winter Park, CO, 80482

OTHER CLUBS

American Breweriana Association (ABA) offers a magazine (American Breweriana Journal) 6 times a year on breweriana collecting and an annual convention. Dues are \$20.00 per year. Contact Chris Galloway, Executive Director, P.O. Box 11157, Pueblo, CO, 81001

Canadian Brewerianist offers 10 issues per year (The Canadian Brewerianist) on Canadian Breweriana collecting and an annual convention. Dues are \$22.00 per year (US Funds). Contact Loren Newman, 2978 Lakeview Trail, Bright's Grove, Ontario, CANADA, N0N 1C0

Canadian Corkscrew Collectors Club (CCCC) offers a quarterly newsletter (The Quarterly Worme) on corkscrew collecting and an annual convention. Dues are \$30.00 per year. Contact Milt Becker, P.O. Box 9863, Englewood, NJ, 07631

East Coast Breweriana Association (ECBA) offers a quarterly newsletter (The Keg) on breweriana collecting and an annual convention. Dues are \$20.00 per year. Contact John Stanley, 3712 Sunningdale Way, Durham, NC, 27707-5684, (919) 419-1546
MICROBES (Micro Chapter ECBA): offers a quarterly newsletter on Micro Breweriana. Dues are \$7.00 per year. Contact Roger Levesque, PO Box 826, South Windsor, CT 06074

Figural Bottle Opener Club (FBOC) offers a quarterly newsletter on three-dimensional and either free standing or wall-mounted openers and an annual convention. Dues are \$20.00 per year. A full color guide book is offered for \$28.00. Contact Donna Kitzmiller, 117 Basin Hill Rd., Duncannon, PA, 17020, (717) 834-4867

National Association Breweriana Advertising (NABA) offers a magazine (The Breweriana Collector) 4 times a year on breweriana collecting and an annual convention. Dues are \$20.00 per year. Contact Robert Jaeger, 2343 Met-To-Wee Lane, Wauwatosa, WI, 53226

WANTED (Please remember there is no charge for Ads)

A-1-9 Golden Glow Beer & B-18-439 Port Townsend. Buy or Trade. Also any Breweriana from Golden West Brewing Co. of Oakland, CA & Port Townsend Brewing Co. of Port Townsend, WA. John Cartwright, 4015 Waterhouse Rd., Oakland, CA, 94607, (510) 763-7817

Beer Types: **A-3,10,21,22,26,38,39,43,56, B-1,14,23,24,25,39, C-13,14,23,24,27,40,41,42 D-13,17,18,19,20, E-30, G-1,2,15,17,20,31, H-8, L-3,5,8, M-2,9,15,18,23,29,30,35,42,47,55, M-60,68,76, N-46,55, also Any Falstaff Openers.** Send price and condition in first letter. Moody Eldridge, 3890 Cliftondale Pl, College Park, GA, 30349, (404) 964-9619

A-9 Baseball Players (Beer or Non-Beer). Beer ones needed: **A-9-8 Eureka, A-9-21 Amber, A-9-26 Penn, A-9-29 Waldorf, A-9-30 Bethlehem, A-9-37 Butte, & A-9-38 Eagle.** (Please note that John Stanley will trade out of his collection to help Ed get the openers listed) Ed Kaye, 1478 Albatross Rd., Sanibel Island, FL, 33957, (813) 472-0004

Non-Beer B-46, B-48, N-46, B-type in April-86 JFO, F-26 type in April-83 JFO. Also **Kitchen Openers with Spoon and 1 Long Hole, and Spoon with Many Small Holes and Flat. Any Kitchen Openers (such as F-11, F-12, & F-13).** Would like one from each State. Bonnie Heathman, 100 1st Ave NE Apt 704, Cedar Rapids, IA, 52401

Types, A-18, A-20, A-23, A-34, A-42, B-6, B-7, B-22, B-31 & H-1, and Especially A-34-1 Arrow. Also **Pepsi-Cola Openers.** Nice trades available. Write for my latest trade/want list. John Stanley, 3712 Sunningdale Way, Durham, NC, 27707-5684, (919) 419-1546

Need These Types: A-22-1 Ballantine, B-59-1 Providence, and C-1-7 Budweiser. Great Trades Available. Jack Ford, 5351 Boyd Ave, Oakland, CA, 94618, (510) 655-5393

A-43-Dixie Beer, L-1-5 Pabst, and X-1-Mile High. Want to buy straight out. Marc Benjamin, 167 Nixon Beach Rd., Edenton, NC, 27932, (919) 482-2099

C-2-6 Valley Forge, B-28 Howell & King, B-37 Dubois, and F-16 Wacker. Cash or Trade. My **A-11-1 Wooden Shoe (EX)** for **Harley-Davidson Bike and Goodyear Airplane Figurals.** Tony Zanghi, 2225 Deer Trail Rd., Coopersburg, PA, 18036, (610) 346-8232

"E" Type Openers. Would like to hear from anyone who has "E" type openers for sell or trade. Ray Schmeisser, RR 3 Box 194 E, Caldwell, TX, 77826

E-2-19 Yuengling Por-Tor, E-2-22 Kaiers, E-3-36 Kaiers, M-3-33 Moose, and M-3-42 Seitz. Harold Queen, 1001 Centre Ave., Jim Thorpe, PA, 18229, (717) 325-2612

"E-11" & "E-14" Openers, Buy, Sell or Trade. Send me your list and I will get one back to you in return mail. If you want to just sell put price in. All replies will be answered. Herb White, 3216 Jamaica Blvd So., Lake Havasu City, AZ, 86406

"E-14" Openers, Will Trade my "C", "E" and "I" Types. Please send list of what you have and I'll send my list. Ralph Tewksbury, 84 Wildwood Dr, Parkersburg, WV 26101

WANTED (Continued) (Please remember there is no charge for Ads)

I-7s, I-15s, and J-4s in VG or Better Condition. Especially Want I-7 #'s: 46, 74, 47, 9, 54, 68, 80, 78, 35, 75, 57, 58, 18, 19, 20, 22. Will make excellent \$ offers for these. Also have extra I-7's and nice I-10-2 Red Top and J-7-2 Coors for trade. Even have Flat Beer Cans if your interested. Tony Ricicki, 9 Laird Terrace, Somerset, NJ, 08873, (908) 873-0301

I-7 Openers - these Beer and Non-Beer Openers say Keglined, Quick & Easy, or Vaughan on them. I have a rather extensive trade list.

Hale Milano, 506 Springhouse Road, Camp Hill, PA, 17011-1454, (717) 737-5067

I-7 Openers. Have 2 O-4-30 Goetz Wall Mounts to trade. Also have a Syroco Scotty Corkscrew. Bill McKenzie, 6360 S Jellison St, Littleton, CO, 80123, (303) 979-0987

M-2 Hires Root Beer "It's Pure" Opener in Good Condition. Will Pay Handsomely! Steve Sourapas, 810 W. Blaine St., Seattle, WA, 98119, (206) 284-0580

M-3-27 Trommers, M-3-30 Gunther, M-3-31 Gunther, M-3-36 Piel Bros, M-3-38 Gunthers, M-3-39 Hialeah, M-3-41 Harrison (Heidelberg), M-3-42 Seitz to complete collection. Cash or Trade. Ben Hoffman, 213 Simmons Rd, Perkiomenville, PA, 18704, (610) 287-8243

O-5 Openers. Send for list. Top Dollar \$\$\$.
Steve Owen, 5409 Carmel Court, Tyler, TX, 75703

My P-1-2 Anheuser-Busch Corkscrew & \$30 for your
P-1-4 Toledo Brewing Co., or P-73-3 F. D. Radeke Brew. Co.,
or P-89-1 Banner Brewing Co., or P-97-1 National Brewery Co.
Ollie Hibbeler, 298 Highline Road, Lake Ozark, MO, 65049

P-19-10 Kalispell, P-18-3 Washoe, P-31-6 Eureka, Purchase or Trade.
Have P-19-2 Townsend, M-73 Highlander Sliders (Red & Blue), and many other P's for trade.
Trade M-73 Highlander (Red & Blue) for M-73 Kessler or M-73 Lorelei (any colors).
Bill Pattie, 37050 SE 89th St., Snoqualmie, WA, 98065, (206) 888-2496

Bar Mount K-2 Blatz, K-8, K-9.
Ed Broders, 10220 Westwood, Baton Rouge, LA, 70809-3243

Need these openers to complete my California Collection. E-4-42 Grace, E-4-242 Salinas, E-4-244 Sequoia, E-4-207 Yosemite, E-7-32 or 33 Salinas, E-14-753 Ambassador, E-14-659 Hollywood, E-14-626 Modesto. Willing to trade or buy.
Wt Gormally, 100 Nelson Pl, Westfield, NJ 07090, (908) 233-8867

Wanted following Openers which have a Cigar Cutter. B-28, N-6, N-28, N-49, P-29, P-48. With or Without Brewery Advertising. Also any other Cigar Cutters. Cash or will Trade if I have your wants. Bill Ennis, 12220 14th Dr SE, Everett, WA, 98208

Cigar Box Openers, Any and All Styles. Will also trade duplicates. Also want other "smalls" with cigar advertising such as pocket cutters, pouches, tip trays, pins, mirrors, etc.
Mike Schwimmer, 325 E. Blodgett Ave., Lake Bluff, IL, 60044-2112, (708) 295-1901

WANTED (Continued) (Please remember there is no charge for Ads)

Cigar Box Openers and Early Pencil Sharpeners (Desk Style or Hand Held).
Dave Opsahl, 721 SW 8th St., Willmar, MN, 56201, (612) 235-7097 (After 6PM)

Cigar Box Openers-Will Buy or Trade for other C.B.O.s or Beer Openers.
Glen Enloe, 805 Tepee Dr, Independence, MO, 64056, (816) 796-9965

Connecticut Openers Wanted: Will trade 1 each B-14-118 Sand Springs (Mint) for CT openers I need. See past issues for my want list or write/call.
Paul Gauvin, 24 Strawberry Ln, Manchester, CT, 06040, (860) 646-9722

Corkscrews, Beer Advertising Letter Openers, Beer Advertising Knives, and Postcards depicting Corkscrews. Please send description, photo, sketch, photocopy, or tracing of what you have and advise price wanted.
Don Bull, 20 Fairway Drive, Stamford, CT, 06903, (203) 968-1925

Corkscrews: Esp. Figural, Syroco, Thomason, Bakelite; also Wine Ephemera (Ads, Postcards, Labels, Grape Box Labels, Etc.); and Bakelite Anything. Buy Straight Out.
Abby Nash, 2110 Slaterville Rd., Ithaca, NY, 14850, (607) 539-7611

Dairy Bottle Openers. Also COCA-COLA Openers from the 40s and Earlier.
Robert Bongiovanni, 154 Springers Mill Rd., Cape May Court House, NJ, 08210

From the Enterprise Brewing Co of Fall River, MA: B-18-26, B-18-178, C-12-135, E-13-35, E-14-526, E-14-779, and N-21-1. Also need H-8-20 Arrow Beer (Globe Brewing Co)
Dave Dubrul, 500 Pine St. 1C, Burlington, VT, 05401, (802) 860-2976

Any Openers from Jamestown Brewing Co, Kuhn's Beer, Chautauqua Brew, Monessen, PA, Independent Brewing Co, unusual Schaefer, and all Cleveland Beers.
Ed Schaefer, 366 Bassett Rd., Bay Village, OH, 44140, (216) 871-0449

KAMM Beer Openers: E-1-9, E-3-13, E-3-60, E-4-298, E-14-161, E-14-515, E-27-1;
Also Oconto Beer Openers other than I's. Trade or Buy. Also Breweriana from either.
Glenn Jandt, W3998 Co D, Peshtigo, WI, 54157, (715) 582-3921

Lexington Brewery (Dixie Beer) & Coca-Cola Openers. Want to buy any figurals or unusual older examples of these. Also looking for old manufacturer's brochures or catalogs (originals or copies of). Thom Thompson, 123 Shaw Ave., Versailles, KY, 40383, (606) 873-8787

New Jersey Openers only. I have an extensive WANT LIST. Also any Breweriana from Paterson, NJ. Pete Lundell, 35 Barbara Lane, Oakland, NJ, 07436, (201) 337-5767 after 6PM

New York Openers A-17-6 Geneva, B-2-45 Interboro, B-18-540 Barmann, B-21-492 Olean, E-16-2 Ryan, E-25-2 Lang, N-22-4 Iroquois. For Trade M-3-20 American, P-116-1 A-B, K-3-1 Rheingold, N-79-1 Simon Pure, G-10-6 Maltosia, E-14-505 Greensburg, E-9-75 Monumental, N-24-2 Pickwick. Mark Barren, 6141 Tachi Dr., Newfane, NY, 14108-9517

Syroco Wood Knight. Will Buy or Trade for, also any O-5 Wallmounts (Beer or Non-Beer).
Dale Deckert, 4087 Lake Conway Woods Blvd., Orlando, FL, 32812, (407) 859-1543

WANTED (Continued) (Please remember there is no charge for Ads)
--

Washington Openers, A-3-20 Hart, A-4-46 Yakima, A-14-1 Rainier, A-16-8 Rainier, A-20-46 Rainier, A-28-36 Walla Walla, A-29-62 Rainier, A-33-3 Rainier, A-34-3 Gilt Top, A-35-18 Walla Walla, A-49-1 Gilt Top, B-5-5 Spokane, B-6-9 Spokane, B-11-1a Rainier, B-11-1b Rainier, B-18-326 Bellingham, B-21-413 Bellingham, B-26-3 Spokane, B-61-1 Hemrich, C-40-1 Lucky, C-43-1 Sick's, also any H-2s, H-3s, or H-8s. I have some openers for trade or will buy. David Edgar, 14240 58th Ave S, Tukwila, WA, 98168, (206) 337-5068

West Virginia Openers (B-7-12, B-18-110, and H-4-3), also Southern US Beer openers and corkscrews. Roger Jarrell, 1500 Sedwick Rd., Durham, NC, 27713, (919) 544-7787

SELLING (Please remember there is no charge for Ads)

"A", "B", "C" Collection: A-1-8 Globe(VG), A-1-23 Graf (VG), A-1-12 K&S (VG) A-5-15 Ideal (G+), A-5-12 National (G+), A-5-33 O.K. (G), A-5-23 Western(G), A-5-16 Zahringer (G+), A-7-19 Bethlehem (VG), A-7-3 Frontenac (F), A-7-4 Frontenac (G+), A-8-1 Ruppert (VG), A-12-15 7th St (G+), A-15-11 Leisy (VG), A-20-24 Belmont (G+), A-20-18 Elfenbrau (G), A-20-44 Seitz (G+), A-21-2 Blatz (G+), A-21-5 Duquesne (VG), A-21-30 Potosi (G+), A-29-3 K-B (E), A-29-18 Pabst (E), A-29-9 Schlitz (G+), A-32-1 Wooden (VG), A-32-3 Wooden (M), A-35-5 Buffalo (VG) A-44-3 Schmidt (G), B-2-1 Blatz (E), B-2-25 Luxus (VG), B-13-9 Iron City (VG), B-13-11 Storz (G+), B-14-1 Atlas (G+), B-14-85 Gluek (VG), B-23-18 Miller (VG), B-24-1 Acme (G), B-24-6 Burkhardt (VG), B-24-26 Narragansett (VG), B-24-35 Walter (G+), B-24-49 Yuengling (G+), B-24-36 Yuengling (G+), B-33-1 Schoenhofen (VG), C-6-3 Iroquois (G), C-7-1 Utica Club (G+), C-9-1 Acme (G+), C-13-19 Detroit (G+), C-14-3 Fort Pitt (E), C-17-66 Atlas (G+).

Best offer over \$500.00 plus insured shipping for all 47 openers.

Conditions F:Fair, G:Good, VG:Very Good, E:Excellent, M:Mint.

Ed Kaye, 1478 Albatross Rd, Sanibel Island, FL, 33957-3604, (941) 472-0004

Everyone is ordering them...Opener Display Case: Display-Organize-4 different models \$10.00 each plus S&H, **4 or more ONLY \$7.95** plus S&H Visa/MC Accepted. Made of a revolutionary clear, flexible plastic. With lid snapped on will protect from **Dust, Damage and Theft.** Collector's Display Case Co. Dept. JF-1, RR 2 Box 73, Fremont, NE, 68025-9635, (402) 721-4765

Wanted: Cigarette Lighters/Watch Combo or any Lift Arm Lighters or any Enamelled Lighters. Also Cuff Links, especially "Snapper" type and Fountain Pens. Mike and Rita Pratt, RR 2 Box 73, Fremont, NE, 68025, (402) 721-4765

"American Breweries II": by Dale Van Wieren. Over 18,000 entries for nearly 8,000 brewing firms, tracing names, addresses, and dates of operation. (\$27 sent 4th Class or \$28 1st Class). John Stanley, 3712 Sunningdale Way, Durham, NC, 27707

"JFO Back Issues" xeroxed for \$40.00 postpaid. Xerox copies of all JFO back issues 1979-95 (68 issues). John Stanley, 3712 Sunningdale Way, Durham, NC, 27707-5684

Soda Handbook in the Works?

Ollie Hibbeler has convinced me to start a Handbook of Soda openers. Any opener or corkscrew with soda advertising or advertising for a bottling company will be included. All members are encouraged to send in their lists of soda openers and corkscrews.

As a side line I also want to do a separate listing of openers that advertise opener manufacturers. This list would be included in the next Beer Handbook as a separate list.

On the back burner are still two other projects. The first is the cross reference for the handbook and the second is a composite listing of results from all past auctions. As time provides I will work on these two plus the new Soda Handbook. (Guess it's a good thing Pat is selling decorative stamps and Mary Kay Cosmetics in addition to her full-time job).

1996 Handbook of United States Beer Advertising Openers and Corkscrews

I still have about 20 1995 Handbooks to sell. At the present time I will probably have a 1996 Handbook ready for the April Convention and the cost should still be \$22.00.

CORKSCREWS P-1, P-73, P-88, P-89, P-94 & P-97 Update

In the April, 1994 JFO issue I asked what the difference was between the various 'All Wire' type corkscrews. After studying the situation and discussing with JFO members, 2 categories will be deleted. P-89 will be listed under P-73. Both have twisted shanks, stopper button and a single helix. P-97 will be listed under P-88. Both have straight shanks and a single helix. This will leave 4 categories P-1, P-73, P-88 and P-94.

Just For Openers Auction Guidelines

Please Note: No Commission Is Charged For Any Openers Consigned

This auction is a service to members of JFO. Consignments can consist of up to 20 openers (of course if you have more than 20 nice openers and/or corkscrews for the auction, I would consider auctioning the whole lot). I would appreciate anyone wishing to submit openers for the auction that they write me first. Include a list of openers you wish to auction along with a condition for each item. If you wish to auction an item with a value of over \$50.00 I would be willing to place a reasonable minimum bid on the item. Any openers submitted for the auction should have a minimum value of \$5.00. I presently have many less than \$5.00 openers available for the auction. Money received for your openers is sent to you within 3 to 4 weeks of the closing date.

Please Write First Before Sending Consignment Material.

RESULTS October 1995 Just For Openers Auction Closing November 17, 1995

127 of 128 Openers were sold for \$1,697.28. The average per opener is \$13.36. Thanks to all 42 bidders. Lot #116 M-26-1 Richbrau brought the top bid of \$42.60. The auction in this issue has 204 lots and several very tough types. I am getting a good response on auction material and decided to expand this auction. I can always use good material for future auctions.

**JANUARY 1996 ADDITIONS TO 1995 HANDBOOK
(COPYRIGHT JANUARY 1996 JOHN STANLEY)**

**JANUARY 1996 CORRECTIONS TO 1995 HANDBOOK
(COPYRIGHT JANUARY 1996 JOHN STANLEY)**

A-1

85. COMPLIMENTS OF THE MANHATTAN
BOTTLING WORKS MILWAUKEE
86. SPOKANE BOTTLE SUPPLY CO. 408 W.
SPRAGUE MAIN 3580 (SEE P-19-50)
87. THE STONE MALT COMPANY JOBBERS-
DISTRIBUTORS

A-1 CORRECTIONS

3. COPELAND'S ALE-LAGER (DELETE
FOREIGN) (96,406)

A-3

36. БЕЛОIT MALT PRODUCTS CO. 436 BROAD
ST. БЕЛОIT, WISC.
37. TOLEDO MALT EXTRACT CO. TOLEDO,
OHIO.

A-3 CORRECTIONS

14. БЕЛОIT MALT PROD CO 436 BROAD STREET
БЕЛОIT WIS (96,11)

A-4

51. HAVRE BREWING & MALTING COMPANY
52. BUY HEK CRYSTAL BOTTLING CO. (MADE
BY GRIESE DIECK BEV CO)

A-4 CORRECTIONS

17. ALPEN BRAU BOTTLED BEER (2 VAR (A)
BLOCK LETTERS (B) "ALPEN BRAU"
SCRIPT AND IN QUOTES) (96,665)
1. THE LOUIS BERGDOLL BREWING CO.
PHILADELPHIA, PA. (94,158,PA)
(96,227,THE)
5. DRINK COPELAND'S ALE & LAGER (DELETE
FOREIGN) (96,406)

A-5

80. BAVARIAN & COLUMBIA MALTS COLUMBIA
PRODUCTS CO.
81. USE BETTER BREW MALT AND HOPS SOLD
EVERYWHERE
82. EPICURE MALT COMPANY USE "OLD
HONESTY MALT" 1538A DORCHESTER
AVENUE DORCHESTER, MASS.
83. "WELCH'S MALT" 5009 NO. WESTERN AVE

A-5 CORRECTIONS

76. DRINK RED RIBBON BEER ANTON BOGO SAN
BERNARDINO, CAL. (DELETE RELISTED
AS A-4-50) (96,583)

A-7

34. DRINK FRONTENAC BEER

A-7 CORRECTIONS

19. BETHLEHEM MALT & HOP CO. 515 E. 3RD
ST. PHONE 3917 (96,261)

A-9

39. TOP NOTCH PRODUCTS CO. 421 HAMILTON
ST. ALLENTOWN, PA.

A-12

22. JOHN GRAF CO.

A-12 CORRECTIONS

17. MAIER BEST BEER IN TOWN SINCE 1875 /
SAME (96,583)

A-13

27. W.F. CRICKLER ESTATE BEER & ALE
BATAVIA, N.Y.

A-13 CORRECTIONS

7. "HOME OF TANNHAEUSER" MEET ME AT
'YORKS BEST' 'THE A.C. BOLL CAFE'
34-36 SO. GEORGE ST. (96,655)

A-15

58. CONGRESS BEER PROPP'S FAUST-NY
59. THE HOME CITY BREWING CO. HEIM BRAU
60. OSHKOSH BREWING CO.

A-16 CORRECTIONS

8. "CUCKOO" A DRINK FOR THE THIRSTY
MALT HOPS, & / "CUCKOO" CUCKOO
CUCKOO CHARLEY ROTH (96,339)

A-17

39. LEISY BEER (EER IN LARGE B)

A-20 CORRECTIONS

15. FOR AMSTERDAM ALE AND LAGER (96,339)

A-21

107. ALPEN BRAU & FALSTAFF BEER M. FENLEY
DISTRIBUTOR
108. C PAGE FOR CARLING'S ALE ATLAS
PRAGER AND BURGER BEERS
109. CITY CLUB BEER COONEY'S BAR PLATTE
CENTER NEBR.
110. JACK DANIELS 1866 CLASSIC AMBER
LAGER
111. FOX HEAD "400" BEER & ALE 7039 S.
DOR. AVE HYD.4280
112. MANHATTAN BOTTLING WORKS MILWAUKEE
GREEN RIVER FOR MIXING & DRINKING
WEST 0206 (SEE A-1-27)

A-21 CORRECTIONS

20. CATARACT THE PRIDE OF ROCHESTER
(DELETE USE #11) (96,406)

A-23

8. MILLER'S HIGHLIFE EASTERN
DISTRIBUTORS MILES CITY PH. 1345

A-23 CORRECTIONS

3. DIAMOND STATE 100% PURE GRAIN LIGHT
BEER (96,261)

A-28

50. DRINK STANDARD BREW. CO. BOTTLE BEER
/ SAME

A-28 CORRECTIONS

30. BUTTE BOTTLERS SUPPLY CO., INC. 112
& 114 S. MAIN ST. PHONE - 3236 /
MALT SYRUP, CORDIALS, MISSION
ORANGE DRY (DELETE USE A-29-33)
(96,486)

A-29 BOTTLE

CAP LIFTER MAY BE

HORN WITH CORKSCREW OR BLANK

GLASS OF BEER MAY BE SHOWN

75. DRINK GOLD TOP OLD TOP! "THATS THE
BEER"
76. DRINK GROSSVATER BEER
77. POTOSI BREWING CO. POTOSI, WIS.
78. POTOSI BREWING CO. POTOSI, WIS. /
WISCONSIN LAGER AND POTOSI THE
BEVERAGES FOR YOU
79. STERLING BREWERS, INC. STERLING BEER
EVANSVILLE, IND.

A-29 CORRECTIONS

5. PABST BLUE RIBBON **BREW** / THE BREW THAT BRINGS BACK MEMORIES (REVERSE HAS STRAIGHT LETTERS) (96,181)
18. PABST BLUE RIBBON BREW / THE BREW THAT BRINGS BACK-MEMORIES (REVERSE HAS SLANTED LETTERS) (96,181)

A-35 CORRECTIONS

32. THE BUDWEISER HOTEL & BAR, PEHL & KUECK SEDALIA, MO. (96,339)

A-42

22. COMPLIMENTS OF ANACONDA BOTTLERS' SUPPLY CO. ANACONDA, MONT. PHONE 665 207 CHERRY ST. (MADE MALT AND HOPS)

A-42 CORRECTIONS

7. HOSLER-COLUMBUS COLUMBUS, OHIO / DRINK GOLD TOP OLD TOP! "THAT'S THE BEER" (ADD '/') (96,261)

A-43

7. ANACORTES SUPPLY CO MALT SYRUP, SUPPLIES ANACORTES WASH

A-43 CORRECTIONS

3. BLATZ BEER DEVINE & ASSELTINE AGTS (MILWAUKEE) (DELETE USE A-57-2) (96,486)

A-44 CORRECTIONS

5. ANACORTES SUPPLY CO MALT SYRUP, SUPPLIES ANACORTES WASH (DELETE USE A-43-7) (96,486)

A-54

2. WALTER BREWING CO. EAU CLAIRE, WIS. BEER THAT IS BEER

A-57

2. BLATZ BEER DEVINE & ASSELSTINE AGTS. PHONE 5457

A-58 BOTTLE

MADE BY CYMBA, INC.

3 1/2"

MEAD BATES

1996 (1)

1. NEW ENGLAND BREWING CO.
A-59 HAND HOLDING BOTTLE
(ORIGINALLY LISTED AS B-59)
3 3/8"
ART JOHNSON

1988 (1)

1. COMPLIMENTS OF PROVIDENCE BREWING CO. PROVIDENCE, R.I. U.S.A. / EXPORT BOHEMIAN BEER (ON NECK LABEL & BOTTLE) (HAND HOLDING BOTTLE)
A-60 INDIAN HEADDRESS
CAP LIFTER/GAS KEY
3"
JACK FORD

1996 (1)

1. FAMOUS NARRAGANSETT LAGER / BANQUET ALE

B-2 CORRECTIONS

35. BANGOR LAGER THE BEER DELUXE (H B CO IN CIRCLE) (96,339)
38. CASPER HEIL BWG. CO. BURLINGTON, IA. HEIL'S EXTRA (96,176)

B-5

36. COMPLIMENTS OF THE "WESTERN BREWER" H.S. RICH & CO. PUBLISHERS CHICAGO-NEW YORK / OPENS THE WAY TO PROSPERITY FOR ADVERTISERS

B-7

27. KEY TO IMPERIAL BREWERY

B-9

9. PETERSEN BREWING CO. GRAND RAPIDS / PURITY BOTTLE BEER

B-9 CORRECTIONS

1. "COMPLIMENTS OF CENTENNIAL BREWING CO. BUTTE, MONT" / "WE MAKE A SPECIALTY OF BOTTLE BEER FOR FAMILY TRADE" (96,339)
3. J. HORNUNG BREWING CO. PHILADELPHIA / WHITE BOCK BEER (DELETE USE #7) (96,339)

B-12 CORRECTIONS

6. COMPLIMENTS OF LEMBECK & BETZ EAGLE BREWING CO. JERSEY CITY, N.J. / DRINK AMERICAN CLUB BEER (96,339)

B-13

104. BLUE RIBBON PRODUCTS CO 209 N. 9TH ST. READING, PENNA. / TIP-TOP MALT SYRUP HOME BEVERAGE SUPPLIES
105. "USE EAGLE 120 MALT" ROCHESTER, N.Y.
106. TRY "VERIBEST MALT" / MILWAUKEE DELICATESSEN, INC. LINCOLN, NEBR.

B-13 CORRECTIONS

7. HABERLE CONGRESS BEER SYRACUSE / NATIONAL CO. DERBY CREAM ALE SYRACUSE (96,339)

B-14

180. GRAND PRIZE PALE DRY BEER / THE TOP OF THE BREW TASTES BEST TO YOU
181. MARATHON CITY BRG. CO. TANNENBAUM BEER

B-14 CORRECTIONS

143. KIEWEL-WHITE SEAL BEER IT SATISFIES / IT'S THE MALT-IT'S THE HOPS (96,176)

B-15 CORRECTIONS

3. HABERLE CONGO SYRACUSE / SAME (96,261)

B-18

552. AMERICAN BREW. CO. LIBERTY BEER ROCHESTER, N.Y.
553. ARLINGTON BREWING CO. WIENER BEER ROSSLYN, VA.
554. BERKSHIRE BREWING ASSN PITTSFIELD, MASS. LENOX ALE MADE IN THE BERKSHIRES
555. KEY TO BILLING'S BREWING CO. BILLINGS, MONTANA / BOHEMIAN BEER
556. THE KEY TO THE GOOD OLD "BLATZ" MILWAUKEE U.S.A.
557. BLUE RIBBON MALT EXTRACT "DOTS WHAT LOOIE USES" / ATLANTIC FOOD PRODUCTS CORP. "6 STORES TO SUPPLY YOU" 127 NORTH 13TH ST. PHILA., PA.
558. BUFFALO CO-OP BREWING CO'S BEER AND ALES MADE FAMOUS BY PUBLIC FAVOR

B-18

559. EASTON MALT & HOP STORE A. TOFF,
PROP. 650 NORTHAMPTON ST. TEL.
1006
560. ELK RUN BREWING CO. PUNXSUTAWNEY,
PA.
561. EVANS' ALE HAS TRADEMARK ON CROWN
CORKS
562. KIKO MALT G AND H PRODUCTS CO.
BUFFALO, N.Y. / KIKO SPECIAL
DOUBLE STRENGTH ITS GOOD
563. KEY TO LABOR BEER UNIONTOWN, PA.
564. COMPLIMENTS OF NORTH AMERICAN
BREWING CO. BROOKLYN, N.Y.
565. NORTH COAST BREWING CO. (IN LOGO)
RED SEAL ALE WARRANTED GOOD
MENDOCINO CO., CALIFORNIA (CYMBA)
566. KEY TO OLEAN BREWING CO. OLEAN, N.Y.
567. PABST GENUINE DRAFT COLD FILTERED
BEER (CYMBA)
568. PECHSTEIN & NAGEL CO. KEOKUK, IOWA /
PURITAS
569. DRINK PHOENIX BEER BUFFALO'S FAMOUS
BREW / ELKS' REUNION 1905
570. MEMBERSHIP KEY TO SCHWARZENBACH
BREWING CO. HORNELL, N.Y. /
C.N.Y.V. FIREMEN'S ASS'N HORNELL,
N.Y. JULY 20-21-22-1909
571. TELLURIDE BOTTLING WORKS GEORGE W.
TALLMAN (BOTTLING AGENT FOR
ZANG'S BREWERY)

B-18 CORRECTIONS

538. KEY TO AMERICAN BREWING AND MALTING
CO'S BEER GREAT FALLS, MONT.
(96,713)
259. CREAM CITY BREWING CO. MILWAUKEE,
WIS. / "EDELBRAU" THE MARROW
MAKING MALT TONIC (96,181)
117. DRINK SCHMIDT'S BEER ST. PAUL'S
FAMOUS (2 VAR (A) BLOCK LETTERS
(B) SCRIPT LETTERS) (96,583)
72. KEY TO SIMON PURE BEER BUFFALO, N.Y.
(ADD BACK DO NOT DELETE) (96,406)
429. UNION BREWING CO. LTD. TARR, PA.
(96,261)
430. "DRINK YUENGLING'S POTTSVILLE
PORTER" (96,158)

B-19

228. ASK FOR BARTELS EXPORT BEER
229. BROADWAY BREWING CO'S PURE BEERS
BUFFALO, N.Y.
230. DRINK GENESEE LIEBOTSCHANER
231. COMPLIMENTS OF PLYMOUTH BREWING AND
MALTING CO. PLYMOUTH, WIS
232. REIF'S SPECIAL "A PURE LIQUID FOOD"
"THE PEER OF ALL SOFT DRINKS"
(CHATTANOOGA BREWING CO
PROHIBITION DRINK)

B-19 CORRECTIONS

148. COMPLIMENTS OF THE CROCKERY CITY
BREW'G & ICE CO. EAST LIVERPOOL,
O. (96,339)
196. THE KITTANNING BRG CO. KITTANNING,
PA. K.B.C. (96,261)
191. DRINK CHAS. D MOULS BEERS YORK, PA.
(96,261)

B-21

526. DRINK ACME BEER FOR HEALTH / SAME
527. IN BOTTLES BARTHOLOMAY ALE / IN
BOTTLES BARTHOLOMAY BEER
528. J.C. HELB'S SONS. BOTTLEERS &
WHOLESALE LIQUOR DEALERS YORK,
PA.
529. C&J MICHEL BREWING CO. LACROSSE,
WIS. / ELFENBRAU
530. FAMOUS NARRAGANSETT ALE
531. KEY TO TIETJEN'S IMPERIAL BEER
532. THE WEST END BREWING CO THE FAMOUS
UTICA BEER / SAME
533. DRINK WIDMANN'S BOHEMIAN EXPORT BEER

B-21 CORRECTIONS

363. BAVARIAN BRWG. CO. WILMINGTON-DEL.
DRINK GREEN LABEL BEER (96,339)
477. BUDWEISER / SAME (96,153)
516. DRINK CRYSTAL ROCK BEER. (DELETE USE
B-21-8) (96,339)
162. GENESEE LIEBOTSCHANER (2 VAR (A)
GENESEE LARGE LETTERS
LIEBOTSCHANER SMALL LETTERS
(MARKED STEPHENS) (B) GENESEE
SMALL LETTERS LIEBOTSCHANER LARGE
LETTERS (MARKED MERCURY NOV)
(96,722)
25. DRINK GUND'S KEG AND BOTTLE BEERS
LACROSSE WIS. (G IN MUG) GOLD
MEDAL 1904 (96,261)
329. NATIONAL BREWING COMPANY STEELTON,
PA. (RESTORE) (96,261)
402. NEW BETHLEHEM BRG. CO. NEW
BETHLEHEM, PA. DRINK UNION BEER
(96,261)
473. KEY TO THE NORTHAMPTON BREWING CO'S
TRU-BLU BEVERAGE (96,261)
192. PETERSEN BREWING CO. GRAND RAPIDS /
PURITY BOTTLE BEER (ADD '/')
(96,339)

B-22

121. KEY TO BOHRER BREWING CO'S AMBER
BREW.
122. DRINK OVERLAND BEVERAGE CO'S PURE
APPLE CIDER
123. REIF'S SPECIAL "A PURE LIQUID FOOD"
"THE PEER OF ALL SOFT DRINKS"
(CHATTANOOGA BREWING CO
PROHIBITION DRINK)

B-23

166. K&M MALT EXTRACT HERMAN KRAUSS, INC.
501 SUPERIOR ST. TOLEDO, OHIO
167. TOWN CLUB A REAL NEW BEER / PIERRE
BOTTLING WORKS PIERRE, SO. DAK.

B-23 CORRECTIONS

2. BARTHOLOMAY APOLLO BEER ROCHESTER,
N.Y. / BARTHOLOMAY CHIC ALE
ROCHESTER, N.Y. (ADD '/')
(96,261)
78. KEY TO P.O.C. "THE BEER THAT BUILDS"
CLEVELAND, OHIO (RESTORE)
(96,261)
26. RENNER YOUNGSTOWN, OHIO / LAGER BEER
OXFORD ALE (96,261)

B-24

105. MOORE & QUINN'S DIAMOND ALE

B-26 CORRECTIONS

- 3. SPOKANE BREWING & MALTING CO. "GILT TOP" BOTTLED BEER THE KIND YOUR NEIGHBOR DRINKS / MANUFACTURED BY NATIONAL SELLING CO. ALLENTOWN, PA. (96,261)

B-30

- 8. VALLEY FORGE SPECIAL C.N. BAIR

B-35

- 21. SUNSET MERCANTILE CO. (OFFSHOOT OF SUNSET BREWING CO.)

B-35 CORRECTIONS

- 5. BLUE RIBBON PRODUCTS CO. READING-POTTSVILLE-LANCASTER YORK / TIP TOP MALT SYRUP HOME BEVERAGE SUPPLIES (DELETE 'MALT') (96,227)

B-36

- 8. ROYAL MALT EXTRACT CO CINCINNATI, O. / IT CAN'T BE REAL UNLESS ITS ROYAL

B-51 CORRECTIONS

- 1. COPLAND'S BUDWEISER / COPLAND'S PALE ALE (DELETE FOREIGN) (96,339)

B-55

- 23. GENESEE LIGHT BEER

B-70

FOLDING CAP LIFTER/GAS KEY/SCREWDRIVER TIP MARKED "MFD BY INDIVIDUAL KEY RING CO. HARTFORD CT. PAT APLD FOR" 2 3/4"

HALE MILANO/ART SANTEN

1996 (1)

- 1. LIBERTY BREWING CO PITTSBURGH, PA. / OLD STYLE LAGER

B-71

FOLDING CAP LIFTER 2 3/8" (CLOSED) TO 3" (OPEN) SCOTT WILLIAMS/JOHN STANLEY

1996 (1-2)

- 1. CHATTANOOGA BR'G. CO. / IMPERIAL PILSENER
- 2. OLD COLONY BREW. CO. / EXPORT CLUB LAGER

B-72

CAP LIFTER/ROTATING CIGAR CUTTER AND KEY HOLDER/SCREWDRIVER TIP MARKED "PAT. APLD FOR" 3"

MIKE SCHWIMMER

1996 (1)

- 1. BUD ON DRAUGHT & BOTTLE / THE PALACE EATS & DRINKS WM. E. PICKENS, PROP

C-1 CORRECTIONS

- 4. SCHEIDT'S SCHEIDT'S VALLEY FORGE SPECIAL BEER (96,261)

C-9

- 38. HUNTSMAN ALES

C-10

- 48. FAMOUS BEVERWYCK BEERS ALBANY, N.Y. (TRADEMARK)

C-10 CORRECTIONS

- 19. REGAL KING OF BEERS DETROIT, MICH. GOOD BEER FOR THE GOOD TIMES (LION HEAD) (DELETE USE #45) (96,339)

C-12

- 172. NORTHERN BREWING CO. WATERTOWN CREAM ALE AND LAGER WATERTOWN, N.Y.
- 173. SCHULTZ BREWING CO., INC. UNION CITY, N.J.

C-12 CORRECTIONS

- 139. MOORE & QUINN DIAMOND ALE (BOTTLE) (96,181)

C-13

- 303. "SCHLITZ" DISTRIBUTORS SCHULHOF BEVERAGE CO. GRACELAND 1133

C-13 CORRECTIONS

- 167. CHARTIERS VALLEY BREWERY CARNEGIE, PA. CARNEGIE PILS'NER THE BEER WITH CHARACTER / CHARTIERS VALLEY BREWERY CARNEGIE, PA. FRONTENAC ALE THE PERFECT PALE ALE (96,227)
- 264. CHARTIERS VALLEY BREWERY CARNEGIE, PA. CARNEGIE PILSNER THE BEER WITH CHARACTER / CHARTIERS VALLEY BREWERY CARNEGIE, PA. FRONTENAC ALE THE PERFECT ALE (DELETE USE #167) (96,339)
- 267. MISSOULA BREWING COMPANY MISSOULA, MONTANA / HIGHLANDER PALE BEER (DELETE USE C-12-157) (96,486)

C-14 CORRECTIONS

- 14. ROCHESTER BREWING CO. INC. OLD TOPPER ALE (MAN IN TOP HAT) (DELETE USE #13) (96,176)

C-16

- 22. CARLING

C-17 CORRECTIONS

- 58. STONEY'S SMOOTHER-TASTING-"AMERICA'S BEST BEER" (96,227)

C-20 CORRECTIONS

- 8. DRINK NEUWEILER'S PURITY BEER ALLENTOWN, PA. / SAME (96,261)
- 10. THE WM. PETER BREWING CORP. / PETER BRAU (THE W B R CO IN CIRCLE) (96,261)

C-21 CORRECTIONS

- 2. KAIER'S OLD DIAMOND ALE & PORTER "FAMOUS AS ANTHRACITE" / KAIER'S SPECIAL BEER FAMOUS AS ANTHRACITE (96,227)

C-24

- 4. DRINK NEUWEILER'S FAMOUS BEERS ALLENTOWN, PA.

C-27

- 2. TIVOLI BREWING CO

C-32 CORRECTIONS

- 1. RAINIER BREWING COMPANY INC. SAN FRANCISCO, CAL. / RAINIER BEER OLD ORIGINAL (BOTTLE) (96,261)

C-36

- 6. C.O. HART SEATTLE PHONE 5046- UNIVERSITY ST. / MALT SYRUP HOPS.

C-45

- 5. BUD KING OF BEERS / SAME (RED ON WHITE)
- 6. BUD LIGHT BEER (BLUE ON WHITE)
- 7. MICHELOB BEER / SAME

**D-1 CORRECTIONS
RAISED & RECESSED LETTERS/
CAP LIFTER CURVED**

1. A.B.B. ASS'N ST. L. / BUDWEISER (2
VAR (A) RECESSED LETTERS (B)
RAISED LETTERS) (96,181)
36. WEIBEL BR'G CO / BOTTLED BEERS
(DELETE USE D-12-11) (96,181)
- D-4 CORRECTIONS**
6. LEISY'S / SAME (2 VAR (A) FLAT
OPENER END (B) CURLED OPENER END)
(96,181)
- D-6 CORRECTIONS**
3. FEHR'S / LOUISVLE (NO I) (ADD '/')
(96,181)

D-12

11. WEIBEL BR'G CO / BOTTLED BEERS

D-21

**CAP LIFTER/BOTTLE STOPPER/
LOOP SEAL REMOVER/
ALUMINUM STOPPER REMOVER
(SEE D-6)
3 3/4"
NORM JAY**

1996 (1)

1. FEHR / LOUISVILLE, KY.

D-22

**CAP LIFTER/BOTTLE STOPPER/CIGAR BOX
OPENER/
HAMMER/SCREWDRIVER TIP/LOOP SEAL REMOVER/
ALUMINUM STOPPER REMOVER
4 1/8"
HERB DANZIGER**

1996 (1)

1. FRANK MARX BREW'G CO. WYANDOTTE
MICH.

E-1

54. DRINK BLACK CROWN LAGER BEER / DRINK
1884 GOLDEN ALE

E-1 CORRECTIONS

35. PARK FAMILY BEERS ARE THE BEST.
(DELETE USE E-22-6) (96,339)
53. TIP TOP BOTTLING CO. 1428 NO. JEFF.
ST. ST. LOUIS, MO. / DRINK TIP
TOP SODA WATER PHONE 1260
CHESTNUT MADE OF PURE CANE SUGAR
(LEMP PROHIBITION CO) (DELETE
NON-BEER NOT LEMP PROHIBITION CO)
(96,149)

E-3 CORRECTIONS

54. SIOUX CITY BREWING CO. SIOUX CITY,
IA. / WESTERN BREW BEST IN THE
WEST (ADD '/') (96,339)

E-4

329. ACME BREW / OLD BOHEMIAN BREW
330. TRY OUR BAVARIAN MALT FOR BEST
RESULTS / MILLER & SINGER 2 2419,
911 COLLINS ST. JOLIET, ILL
331. BARTELS CROWN BEER / BARTELS OLD
DEVONSHIRE ALE
332. THE JOHN EICHLER BREWING CO. 3582
THIRD AVE. N.Y. / EICHLER'S EXTRA
BREWS

333. GLOBE BREWING CO., INC. UTICA, NEW
YORK / ROYAL STYLE ALE DICTATOR
BEER
334. HIGH TEST MALT EXTRACT CO. PHONE
WEST 2070 CHICAGO, ILL. / NO -
BOIL AND BOHEMIAN STYLE
335. NEUSTADTL BREWING CORPORATION
STROUDSBURG, PA. / DRINK
"GESUNDHEIT" BEER
336. OERTEL'S REAL LAGER BEER / SAME BREW
SINCE '92
337. "DON'T SAY BEER SAY SCHLITZ" / "THE
BREW THAT MADE MILWAUKEE FAMOUS"
(2 VAR (A) QUOTES BACKSIDE (BREW)
(B) NO QUOTES BACKSIDE (BREW))

E-4 CORRECTIONS

216. CAMDEN LAGER BEER / LORD CAMDEN ALE
(ADD '/') (96,261)
45. HORNING'S "WHITE BOCK" / "ES
SCHMECKT" (96,227)
298. KAMM & SCHELLINGER CO. MISHAWAKA,
IND. / >A-R-R-O-W-> "IT HITS THE
SPOT" (96,158)
52. G. KRUEGER BRG. CO. NEWARK, N.J. /
KRUEGER'S FINEST BEER-LORD ESSEX
STOUT OLD SURREY PORTER-BOAR'S
HEAD ALE-KENT ALE (96,227)
72. REGAL AMBER BREWING CO. / REGAL
AMBER-LAGER BEER (2 VAR (A)
HYPHEN (B) NO HYPHEN) (96,587)
147. STANDARD BREWING CO. INC. ROCHESTER,
N.Y. / OLD OX HEAD ALE (96,202)
262. GEO. WALTERS / ADLER BRAU (96,188)

E-5

100. BALLANTINE'S-BAVARIAN EASTON
DISTRIBUTING CO. ALE - BEER -
SOFT DRINKS 2118 LIBERTY ST.,
EASTON, PA. PHONE 7963
101. BUDWEISER ON TAP MEET DEE AT
DILDAY'S STORK INN 4527 VIRGINIA
102. CHAMPAGNE VELVET GOLD LABEL BEER
EAST TENNESSEE BEER DISTR. PHONE
2-2917
103. LONE STAR THANKS CA6-9316 GROWING
GREAT IN THE LONE STAR STATE
APACHE DIST. CO., INC.
104. SOUTHERN SELECT EDWARD F. KABALA
DISTRIBUTOR PHONE 190 TAYLOR,
TEXAS

E-5 CORRECTIONS

78. COMPLIMENTS OF MATZ BREWING CO.
BELLAIRE, OHIO MERRY XMAS HAPPY
NEW YEAR THE VALLEY'S FAVORITES
MATZ THE OLDEN TIME BEER & 1884
GOLDEN ALE (MATZ ON BOTTLE)
(96,227)
40. OLD READING BEER DISTRIBUTOR "I'M ON
MY WAY TO" PETER SAYERS WEST
CHURCH AND N.C.R.R. PHONE 8-2606-
YORK, PENNA. (96,572)
25. PIFF'S BEVERAGES BETHLEHEM, PA. (ON
BODY LABEL) PIFF'S BEVERAGES (ON
NECK LABEL) (BOTTLE) PIFF'S
BEVERAGES BETHLEHEM PA. PHONE 83
THE FAMILY FAVORITE FOR MORE THEN
25 YEARS (96,261)

E-5 CORRECTIONS

65. SCHAEFER YUENGLING AND OTHER POPULAR BRANDS EAGLE DISTRIBUTING CO. 700 TULPEHOKEN ST. READING PHONE 373 4648 (96,261)

E-6

218. MANHATTAN BOTTLING WORKS PHONE WEST 206
219. ROCK ISLAND BREWING CO. ROCK ISLAND, ILL. / CROSS COUNTRY BEER

E-6 CORRECTIONS

130. CHARTIERS VALLEY BRY. CARNEGIE, PA. / OLD CARNEGIE PILSNER SKIBO **ALE-PORTER** (96,227)
113. TRENTON OLD STOCK BEER / MERCER BOTTLING **COMPANY** (96,339)

E-7

74. BREHM'S "ONE GRADE ONLY" / SAME
75. THE BUCKEYE PRODUCING CO TOLEDO, OHIO / GREEN SEAL BEVERAGES
76. PEERLESS PRODUCTS CO. PHONE KILBOURN 2714

E-8

104. BAVARIAN SPECIAL BRAU / HOMA MALT-HOPS
105. DOWN'S PURE ALE LOCKPORT, N.Y. / SAME
106. IROQUOIS BREWING CO. BUFFALO, N.Y. / SAME
107. STOLL'S BEER TROY, N.Y. / SAME

E-8 CORRECTIONS

37. LIEBMANN BREWERIES BROOKLYN, **NEW YORK** / SAME (96,406)
84. ORANGE COUNTY BREWERY MIDDLETOWN, N.Y. / **SAME** (96,261)

E-9

127. ANACONDA PRODUCTS / ANACONDA, MONTANA (OFFSHOOT OF ANACONDA BREWING CO.)
128. PITTSBURGH BREWING COMPANY / IRON CITY LAGER
129. RED BIRD COMPOUND WITH IMPORTED HOPS / 1109 W. BALTO. ST. 1523 W. BALTO. ST.

E-14 CORRECTIONS

313. ANACONDA BRG. CO. INC. ANACONDA, MONT. / ROCKY MOUNTAIN BEER (DELETE USE #582) (96,486)
600. BECHAUD-FOND DU LAC EMPIRE BEER / SAME (96,261)
476. BOSCH BREWING CO. HOUGHTON, MICHIGAN "NOT FOR RESALE" / BOSCH BEER BOSCH BEER (96,188)
479. BUTTE SPECIAL BEER IS BETTER BEER (DELETE USE #40) (96,486)
41. BUTTE SPECIAL BEER IT'S "**BETTER**" BEER / SAME (94,478) (DELETE USE #40) (96,486)
44. CATARACT LAGER **BEER** THE PRIDE OF ROCHESTER (96,261)
776. DOWN'S PURE ALE LOCKPORT, N.Y. / SAME (DELETE USE E-8-105) (96,406)
598. ECKERT'S BEER TEL. CAPITOL 6111 / WINS ANY TEST OF TASTE (ADD BACK DO NOT DELETE) (96,158)
406. **MEN-MAR** BREWING CO. THE BEST WHAT IS / SAME (96,188)

453. AUGUST WAGNER BREWERIES, INC. / GAMBRINUS BEER "GIMMIE A GAM" (ADD '/') (96,261)

E-17

12. LION BREWERY CINCINNATI, OHIO. / LION BEERS ARE PURE.
13. ONEIDA BREWING CO. UTICA, N.Y. / SAME

E-17 CORRECTIONS

8. SALT LAKE CITY BREWING CO. / AMERICAN BEAUTY BEER (DELETE USE #10) (96,339)

E-18

7. PORTNER'S HOFBRAU

E-22

5. HAFFENREFFER & CO. BOYLSTON LAGER BEER
6. PARK FAMILY BEERS ARE THE BEST.

E-25

9. DRINK DAEUFER'S PEERLESS
10. IROQUOIS INDIAN HEAD BEER / SAME

E-27**(DELETE USE E-4)**

3. BAVARIAN MALT / COLUMBIA MALT (DELETE USE E-4-107)
4. FALSTAFF / THE CHOICEST PRODUCT OF THE BREWERS' ART (DELETE USE E-4-35)
5. M.K. GOETZ BREWING CO. / COUNTRY CLUB SPECIAL (DELETE USE E-4-117)
7. HIGH TEST MALT EXTRACT CO. PHONE WEST 2070 CHICAGO, ILL. / NO - BOIL AND BOHEMIAN STYLE (DELETE USE E-4-334)
1. KAMM & SCHELLINGER CO. MISHAWAKA, IND. / >A-R-R-O-W-> "IT HITS THE SPOT" (95,158) (DELETE USE E-4-298)
2. OLD WURZBURG MALT / SAME (DELETE USE E-4-236)
8. "DON'T SAY BEER SAY SCHLITZ" / "THE BREW THAT MADE MILWAUKEE FAMOUS" (DELETE USE E-4-337)
6. SHEA'S STOCK ALE / SHEA'S SELECT (DELETE USE E-4-146)

E-28

5. DRINK EDELWEISS-FALSTAFF OR HIGH LIFE BEER / CLARA BELLE LEADS THEM ALL HENRY BOHLER CO.

F-2

49. NATIONAL BEER DEPOT-GR. 3700
50. SEITZ BEER / WM. J. LYTTLE - YORK, PA.

F-5

35. SOUTHWARK PRODUCTS CO. 1710 POINT BREEZE AVE., PHONE OREGON 8433 / SUNSET & MOUNTAIN TOP MALT & HOPS

F-6

86. ACKERMAN'S BEER / SAME
87. BEVERWYCK BREWING CO. / B B B BEST BEER BREWED
88. CONGRESS BEER / SAME
89. GENEVA BREWING CO. / ALE-PORTER-LAGER
90. LEONHARD EPPIG BREW. CO. BROOKLYN, N.Y. / DRINK GERMANIA BREW. IN BOTTLES.
91. COMPLIMENTS OF / HOME BREWING COMPANY

F-7

8. GOLDEN BREWED GUNTHER BEER ALSO 20 OTHER POPULAR BRANDS PROMPT DELIVERY SERVICE EARL L. PETERS DISTRIBUTOR 549 NEW HOLLAND AVE. LANCASTER, PA. PHONE 3-6011

F-9

19. BLUE ANCHOR BEVERAGE'S / PHONE-BALDWIN 3500 / BEER-BOTTLE-KEGS / 5TH & RISING SUN AVE. (SEE E-4-214)
20. COMPLIMENTS OF EXCELSIOR BREWING CO. / SUCCESS & GOLDEN SEAL / BOTTLED BEERS / PHONE HARVARD CENTRAL 276 8810

F-12

7. BUFFALO BREWING CO. MOHAWK SPECIAL

F-15

12. STRAUB BEER NU-KEYSTONE BEVERAGE 1219-19TH ST. PHONE 2-7980 ALTOONA, PA.

G-1

68. GOOD OLD GLENNON'S BEER (BOTTLE)

G-3

15. USE EAGLE 120 MALT EAGLE SUPPLY HOUSE ROCHESTER, N.Y.
16. DRINK STOECKLES LAGER BEER (WITH CORKSCREW)

G-5

39. BARTHOLOMAY RIENZE BEER IN BOTTLES ONLY

40. GENESEE LIEBOTSCHNER BEER ROCHESTER, N.Y.

G-6

23. NATIONAL BREWING CO. BALTO. 10 MD. NATIONAL BOHEMIAN NATIONAL PREMIUM

G-8

4" TO 4 1/8" LONG & 3/4" WIDE

G-9

90. CARLING'S RED CAP ALE (BLACK ON RED)
91. DOTTERWYCK BEER (BLACK ON YELLOW)

G-9 CORRECTIONS

32. BLACK HORSE ALE (YELLOW ON GREEN) (DELETE FOREIGN) (96,158)
66. KESSLER BREWING CO. (BLACK ON YELLOW) (DELETE USE #74) (96,486)

G-14

9. THE CUSTOM BREW HAUS BREW LOCALLY DRINK GLOBALLY 314-726-BREW
10. YOUR GENESEE BEER DISTRIBUTOR ALBION PRODUCE CO., INC. ALBION, N.Y. 14411 (WHITE ON RED)
11. THE MILLER LITE DRINKERS (IN LOGO) (WHITE ON BLUE)
12. ST. STANS (MODESTO, CA MICRO BREWERY)

G-22

4 1/4" LONG & 5/8" WIDE

G-28

21. ANCHOR STEAM SAN FRANCISCO (BLUE ON SILVER)
22. BUDWEISER MICHELOB NOR-COLO DISTRIBUTING CO.
23. GENESEE BEER DURDACH BROS. INC.

G-40

CAP LIFTER/FORMED METAL/BOTTLE SHAPED/
FOLDING CORKSCREW (SEE G-1)
MADE BY VAUGHAN, CHICAGO
4"

VERNE VOLLRATH

1996 (1)

1. BERGHOFF 1887 BEER

G-41

CAP LIFTER/BOTTLE SHAPED
ENAMELLED BLUE, GOLD, GREEN & WHITE
6"

HAROLD QUEEN

1996 (1)

1. ROLLING ROCK EXTRA PALE PREMIUM BEER (ON LOGO) = @ 1939 ROLLING ROCK / ROLLING ROCK FROM THE GLASS LINED TANKS OF OLD LATROBE WE TENDER THIS PREMIUM BEER FOR YOUR ENJOYMENT, AS A TRIBUTE TO YOUR GOOD TASTE. IT COMES FROM THE MOUNTAIN SPRINGS TO YOU "33"

H-1

43. THE ERIE BREWING COMPANY ERIE, PA. IMPERIAL BEER

44. NORTON'S GOLD BAND BEER

H-1 CORRECTIONS

10. HENRY C. RAHR BREWING CO. TELEPHONE 9 CHILTON, WIS. (96,158)

H-2

SIDE VIEW SHOWS PAIR OF

CURVILINEAR ROUNDED POINTS OR SHARP POINTS

184. PUT "EASTSIDE" INSIDE

185. PICKWICK ALE

H-2 CORRECTIONS

60. DUQUESNE KEG-O-BEER "THE FINEST BEER IN TOWN IN CANS" (95,227)

88. NIAGARA BEVERAGES NIAGARA FALLS, N.Y. (DELETE NON-BEER) (96,406)

33. QUEEN-O (DELETE NON-BEER) (96,406)

H-3

SIDE VIEW SHOWS PAIR OF

CURVILINEAR ROUNDED POINTS OR SHARP POINTS

51. FALSTAFF (IN SHIELD) JOHN HIRSCHFIELD, DISTRIBUTOR CHAMPAIGN, ILLINOIS

H-4

MARKED "PATENTED DEC.11.28 FEB.12.29

(JEM CO IN LOGO)

THE J.E. MERGOTT CO. NEWARK, N.J."

I-4 CORRECTIONS

26. ADAM SCHEIDT BREWING COMPANY NORRISTOWN, PA. (96,1)

I-6

96. FOR OPENING HIGHLANDER BEER

I-6 CORRECTIONS

62. RED TOP BREWING CO. CINCINNATI, OHIO / SAME (96,261)

I-7

82. DRINK GOOD OLD BALBOA BEER
83. ROGER WILLIAMS ALE

I-11

373. COORS AMERICA'S FINE LIGHT BEER
 374. METZ BREWING CO. OMAHA, NEBRASKA /
 METZ (IN BOX) PREMIUM BEER
 375. THE NATIONAL BREWING CO., BALTO.,
 MD., -ORLANDO, FLA. THE NATIONAL
 BREWING CO. OF MICH., DETROIT,
 MICH. / NATIONAL BOHEMIAN... WET
 COLD AND DELICIOUS!

I-11 CORRECTIONS

165. BUTTE SPECIAL BEER IS "BETTER" BEER
 / SAME (96,486)
 255. FOAM FRESH HARVARD / SAME (96,1)
 135. ADAM SCHEIDT BREWING COMPANY
 NORRISTOWN, PA., THE ARISTOCRAT
 OF ALES RAM'S HEAD ALE / HEADED
 FOR PLEASURE! VALLEY FORGE BEER
 (96,261)

I-12

205. BUD LIGHT (LEFT-HANDED)
 206. O'DOUL'S (LEFT-HANDED)

I-12 CORRECTIONS

44. HIGHLANDER BEER / SAME (DELETE USE
 #121) (96,486)
 82. ADAM SCHEIDT BREWING COMPANY-
 NORRISTOWN, PA. THE ARISTOCRAT OF
 ALES RAM'S HEAD ALE / HEADED FOR
 PLEASURE! VALLEY FORGE BEER
 (96,1)
 88. STANDARD ROCHESTER BREWING CO., INC.
 ROCHESTER, NEW YORK / TOPPER
 PILSENER (96,1)

I-13 CORRECTIONS

94. "DUKE" & DUQUESNE ARE ONE AND THE
 SAME (96,227)
 31. LEBANON VALLEY BREWING COMPANY
 LEBANON, PA. (96,1)
 66. LONE STAR BEER MAKES THE MOST OF
 NATURE'S BEST / SAME (96,583)

I-15

73. SCHLITZ BEER CLINTON L. GRAY

I-16 CORRECTIONS

47. BUTTE BREWING CORP. / BUTTE LAGER
 BEER ENJOYED FOR 4 GENERATIONS
 (DELETE USE I-17-152) (96,486)

I-17

289. SEBEWAING BREWING CO. / SEBEWAING
 BEER

I-17 CORRECTIONS

11. (3 RINGS) BALLANTINE ALE & BEER (3
 RINGS) / SAME (2 VAR (A) 3 RINGS
 TWICE (B) 3 RINGS ONCE) (96,181)
 242. BOSCH BREWING COMPANY HOUGHTON,
 MICHIGAN / BOSCH BEER (MAN WITH
 HAT & TUBA) (96,176)
 153. CARLSBERG / SAME (96,1)
 247. GUNTHER BREWING CO., INC. BALTIMORE,
 MD. / GUNTHER PREMIUM DRY BEER
 (96,1)
 213. CHR. HEURICH'S ORIGINAL LAGER BEER /
 SAME (96,1)
 214. HORNUNG BEER ALE / SAME (96,176)
 102. PIEL BROS. N.Y PIEL'S BEER LESS
 N.F.S. / SAME (96,176)
 227. SCHLITZ JOS. SCHLITZ BREWING COMPANY
 MILWAUKEE, WIS. AND OTHER CITIES
 / SCHLITZ THE BEER THAT MADE
 MILWAUKEE FAMOUS (96,176)
 195. TROPICAL ALE & BEER / SAME (96,176)

I-20

34. FOX HEAD 400 BEER

I-22

30. STROH'S

I-30

5. LEINENKUGEL'S BEER (RED ON WHITE)
 6. MILLER HIGH LIFE (RED ON WHITE)

J-3 CORRECTIONS

2. DUQUESNE PILSENER "THE FINEST BEER
 IN TOWN" (2 VAR (A) QUOTES (B) NO
 QUOTES) (96,227)
 5. FOR OPENING HIGHLANDER BEER (DELETE
 USE J-5-16) (96,486)
 32. FOR OPENING HIGHLANDER BEER / SAME
 (DELETE USE J-5-16) (96,486)

J-5

106. GLUEKS-STITE-OLD-STYLE-STORZ MARTIN
 DISTRIBUTING CO. CANADA DRY
 BEVERAGES AND MIXES
 107. SCHLITZ JOS. SCHLITZ BRG. CO.
 MILWAUKEE, WIS. U.S.A. BREWERIES
 AT MILWAUKEE, WIS. BROOKLYN, N.Y.
 AND LOS ANGELES, CALIF. / SCHLITZ
 THE BEER THAT MADE MILWAUKEE
 FAMOUS

J-5 CORRECTIONS

61. MAIER BREWING COMPANY LOS ANGELES,
 CALIF. / BREW "102" (96,158)

J-7

4. SCHAEFER BEER AT ITS BEST

J-11

4. HANLEY LAGER BEER

K-13

HEAVY CAST IRON OPENER

CAN IS DOUBLE PIERCED

OPENS 16 OZ CANS ONLY

8 1/2"

DON WHELAN

1996 (1)

1. SCHLITZ THE BEER THAT MADE MILWAUKEE
 FAMOUS

L-2

14. KOLB BROS. CRYSTAL EXPORT LAGER WEST
 BAY CITY, MICH.

15. H.T. & J.N. MOLTER PROVIDENCE, R.I.
 WHAT CHEER LAGER BEER

L-4

66. KOPPITZ SILVER STAR BEER BY KOPPITZ-
 MELCHERS INC. DETROIT, MICH.,
 U.S.A (NECK LABEL: KOPPITZ FOR
 YOUR PROTECTION (BOTTLE AND
 STAR))

L-4 CORRECTIONS

9. FRANK FEHR BREWING CO. LOUISVILLE,
 KY. FEHR'S X/L THE BEER THAT
 EXCELS (NECK LABEL: FEHR'S SINCE
 1872) (96,583)
 14. KOPPITZ SILVER STAR BEER BY KOPPITZ-
 MELCHERS INC. DETROIT, MICH.,
 U.S.A (NECK LABEL (4 SILVER
 STARS)) (96,339)
 49. SCHLITZ THE BEER THAT MADE MILWAUKEE
 FAMOUS (NECK LABEL: SCHLITZ GLOBE
 SCHLITZ) (MAY HAVE DIFFERENT
 SOUVENIR CITIES ON BACK) (96,583)

M-1

24. LYON & SONS BREWING CO. NEWARK, N.J.
KENT ALE ('KENT ALE' ON BOTTLE)

M-1 CORRECTIONS

1. CANANDAIGUA HIGH HOPPED ALE (DELETE
USE M-2-13) (96,211)
19. HAFFENREFFER & CO. BOSTON THE TANG
OF GOOD OLD ALE PICKWICK ALE AND
STOUT / SAME (96,211)
18. BY LIEBMAN BREWERIES INC. NEW YORK
FALKIRK, SCOTLAND / GOOD OLD
SCOTCH BREW FOR REAL REFRESHMENT
(DELETE USE #8) (96,339)
13. S. LIEBMAN'S SONS CONQUEROR (SLS IN
LOGO) BEER (BOTTLE) / CONQUEROR
(SLS IN LOGO) BEER ALL THE
MATERIALS USED IN THE BEER
IMPORTED (96,261)
14. S. LIEBMAN'S SONS RHEINGOLD BEER
(BOTTLE) / RHEINGOLD BEER (SLS IN
LOGO) (96,211)
10. PICKWICK BEER IN BROWN BOTTLES /
SAME (DELETE USE #4) (96,339)
17. RHEINGOLD BEER / SAME (WHITE ON
GREEN) (DELETE USE #14) (96,339)

M-2 CORRECTIONS

5. BARTHOLOMAY APOLLO BEER ROCHESTER,
N.Y. ('BARTHOLOMAY APOLLO BEER
ROCHESTER, N.Y.' ON BOTTLE) /
BARTHOLOMAY CHIC ALE ROCHESTER,
N.Y. ('BARTHOLOMAY CHIC ALE
BREWERY BOTTLING' ON BOTTLE) (2
NIBS STICKING OUT FROM SIDES)
(96,211)
12. BERRY'S DIAMOND WEDDING WHISKEY
('BERRY'S DIAMOND WEDDING WHISKEY
C. BERRY & CO.' ON BOTTLE) /
BERRY'S HYGIENIC BOTTLING ALES
BEERS AND PORTERS (96,211)
7. THE CROWN BR'G CO. CINCINNATI CROWN
BEER ('HAPPY DAYS BEER THE CROWN
BREWING CINCINNATI' ON BOTTLE)
(96,211)
17. THE CROWN BR'G CO. CINCINNATI HAPPY
DAYS BEER ('HAPPY DAYS BEER THE
CROWN BREWING CINCINNATI' ON
BOTTLE) (96,211)
1. LYON & SONS BREWING CO. NEWARK, N.J.
AMBER ALE (DELETE USE M-1-22)
(96,211)
2. LYON & SONS BREWING CO. NEWARK, N.J.
KENT ALE (DELETE USE M-1-24)
(96,211)
13. CANANDAIGUA HIGH HOPPED ALE
('CANANDAIGUA HIGH HOPPED ALE J &
A MCKECHNIE BRG CO BREWERY
BOTTLING' ON BOTTLE) / SAME
(96,211)
9. MCKECHNIE BRG. CO. BREWERY BOTTLING
CANANDAIGUA HIGH HOPPED ALE
(DELETE USE #13) (96,339)
14. MUEHLEBACH (DELETE USE #18) (96,339)
18. MUEHLEBACH BEER KANSAS CITY
('MUEHLEBACH PILSNER KANSAS CITY,
MO' ON BOTTLE) (96,211)

11. WIELAND'S EXTRA PALE ('JOHN WIELAND
BREWERY SAN FRANCISCO, CAL. JOHN
WIELAND EXTRA PALE LAGER BEER' ON
BOTTLE) (96,211)

M-3 CORRECTIONS

38. GUNTHERS BEER (SHIELD) (DELETE USE
#24) (96,339)
30. GUNTHER LAGER BEER (DELETE USE #24)
(96,339)
31. GUNTHER THE WORD FOR QUALITY (DELETE
USE #7) (96,339)

M-19

25. WOLTERS / PILSENER

M-19 CORRECTIONS

7. STORZ S.T.D (INITIALS VARY AS THESE
OPENERS WERE PRESENTED TO
INDIVIDUALS OR DISTRIBUTORS FOR
SPECIAL RECOGNITION) (96,583)

M-29

59. BALLANTINE PABST BLUE RIBBON (PURITY
BODY FLAVOR ON 3 RINGS) NEUWEILER
(NIX BESSER) IMPORTED WURTZBURGER
HOFBRAU EAST STROUDSBURG BEVERAGE
CO. PHONE HA 1-1210 51 NORTH
COURTLAND ST.-E. STROUDSBURG, PA.
60. BUDWEISER-HIGHLANDER-BURGIE-PEPSI
COLA-SQUIRT-FLAVORS ROUNDUP
BOTTLING CO. PHONE 63 DELL AND
JIM-OWNERS ROUNDUP, MONTANA
61. BUDWEISER KING OF BEERS (EAGLE IN A)
MONTCO DISTRIBUTORS LANSDALE, PA.
62. (EAGLE IN A) OUR BEER MUST BE GOOD
DICK AND JOYCE STERLING, NEBR.
63. HIGHLANDER-SCHLITZ-BURGIE SEASONS
GREETINGS FROM RAY & FRANK
DISTRIBUTORS INC. PHONE 756-5414
KALISPELL, MONTANA
64. SCHLITZ (IN LOGO) COOKE SALES, INC.
SCHLITZ WHOLESALERS DR 1-4105
KANSAS CITY, KANSAS
65. SCHLITZ NEUWEILER CARLING LOWENBRAU
LABATT'S FRED LABE, INC. 1018
WINDSOR ST. - READING, PA. PHONE
FR 4-7231 (TIP MISSING)

M-29 CORRECTIONS

33. BUSCH BAVARIAN BEER H.W. HERRELL
DIST. CO. BUDWEISER BUSCH
BAVARIAN IMPERIAL, MISSOURI
HOBART 7-2441 OR HOBART 7-4811
(96,158)

M-30

68. BUDWEISER AND KTRI PICK A PAIR
69. BUDWEISER-MICHELOB-BUSCH BAVARIAN
(EAGLE IN A) "A LITTLE THANK YOU"
A. GAUDIO & SONS INC. 463 S.
SANDY JACKSONVILLE, ILL. PHONE
245-2814
70. BUSCH BAVARIAN BEER OPEN HOUSE 1968
GREAT BAY DISTRIBUTORS INC. ST.
PETERSBURG CLEARWATER, FLORIDA
71. DISTRIBUTORS OF DUQUESNE, PABST,
SILVER TOP, AND DUKE ALE HAVE A
DUKE! UNITED BEVERAGE COMPANY
DUQUESNE (PRINCE) PABST BLUE
RIBBON (RIBBON) CHAS., W.VA. PH.
342-7115 (PHONE US FOR PARTY
KEGS)

M-30

72. FALSTAFF BEER FALSTAFF DIST. CO.
TALAMANTEZ SERVING WILSON,
ATASCOSA & KARNES COUNTIES
FLORESVILLE, TEXAS OFF.PH. 393-
6702 RES.PH. 393-3290
73. GO, GO, GO! FOR ... FALSTAFF
(CARTOON CHARACTER-COACH BOTTLE
NOSE) MILLER HIGH LIFE
74. DISTRIBUTOR OF GENESEE BEER - CREAM
ALE FYFE & DRUM LYTE BEER MOLSON
GOLDEN ALE & BEER PENN BEER CO.
1150 EAST LAKE ROAD ERIE, PA
PHONE 454-1578
75. GENESEE BEER ALBION PRODUCE CO. INC.
YOUR GENESEE BEER DISTRIBUTOR
ALBION, N.Y. 589-5588
76. JAX BEER JAX DIST. CO. BILL FISCHER,
DIST. ALICE, TEXAS
77. LONE STAR BEER (IN LOGO) LONE STAR
BEER 211 HOUSTON AVE. YU 5-9981
PORT ARTHUR, TEXAS PAUL JORGENSEN
78. RHEINGOLD DISTRIBUTOR MAIER'S
BEVERAGES PHONE 942-5218 6TH AVE.
& 29TH ST. ALTOONA, PA.
79. RHEINGOLD-IRON CITY-NATIONAL
BOHEMIAN-COLT 45 AND OTHER
POPULAR BRANDS LIBERTY BELL
BOTTLING CO. IMPORTING
DISTRIBUTOR FOR COMPLETE LINE OF
SOFT DRINKS 24 HOUR ICE VENDOR
DRIVE-IN AND DELIVERY SERVICE
1857 SO. 5TH ST. ALLENTOWN, PA.
PHONE 797-2035

80. RUPPERT DISTRIBUTOR G.A. PETERS,
DIST., INC. ROY MILLER
GABLINGER'S DOESN'T FILL YOU UP
549 NEW HOLLAND AVE. LANCASTER,
PA. PHONES 393-6011 OR 393-3761
81. STORZ BREWING CO. OMAHA, NEBRASKA
(STORZ ON RED FLAG 10 TIMES)

M-30 CORRECTIONS

3. STORZ BREWING CO. OMAHA, NEBRASKA
(STORZ ON RED FLAG 10 TIMES)
(96,583)

M-34

9. GENESEE BEER ALBION PRODUCE COMPANY
215 WASHINGTON ST. ALBION, N.Y.
14411 589-5588

M-38 CORRECTIONS

10. HIGH LIFE SALES CO. JOPLIN, MO.
PHONE 1267 (MILLER BEER
DISTRIBUTOR) (DELETE RELISTED AS
N-38-5) (96,583)

M-43

27. MILLER HIGH LIFE (MILLER LOGO)
MILLER AMERICA'S QUALITY BEER /
SAME

M-54

7. CUSTOM BREW HAUS BREW LOCALLY-DRINK
GLOBALLY CALL 726-BREW
8. GOETZ COUNTRY CLUB BEER ST. JOSEPH,
MO. / JUST FOR OPENERS 17TH
ANNUAL CONVENTION ST. JOSEPH, MO.
APRIL 1995

M-74

6. DRINK "STONEYS" BEER PRIBANIC-NAVISH
PHONE VA 3-3366 3-8011 EAST PGH.

M-83

15. GENESEE BEER COMPLIMENTS OF L.P.
BRADY DISTRIBUTORS, INC. YOUR
GENESEE BEER DISTRIBUTOR LEROY,
N.Y.-DIAL 967-6520
16. PIGS EYE PILSNER BEER

M-103

CAP LIFTER/ORNATE ART DECO HANDLE
6 1/2"

OLLIE HIBBELER/DON BULL

1996 (1)

1. "HIGH LIFE BEER" M. GANS CO.

M-104

LONG FISHING KNIFE WITH OPENER IN BLADE/
OLIVE FORK AT BLADE END/
SCREWDRIVER TIP AT END OF HANDLE
(SEE M-98)

MARKED "STAINLESS STEEL JAPAN"

11 3/4"

NORM JAY

1996 (1)

1. PABST BLUE RIBBON (IN RIBBON)
BUDWEISER (IN BANNER) BILEK
DIST. CO., INC. 384-3030 387-
6271 MARSHFIELD, WIS. 54449
(DECAL ON KNIFE BLADE)

M-105

CAP LIFTER

5 1/2"

DON WHELAN

1996 (1)

1. COLT 45 (LOGO) / SAME

N-4

8. BISMARCK BEER / VICTORY 7060

N-11 CORRECTIONS

2. STONEY'S "AMERICA'S BEST" BEER
(96,227)

N-12

2. SCHLITZ (IN LOGO) BARTON
DISTRIBUTING CO. WHOLESALER OF
THE BEER THAT MADE MILWAUKEE
FAMOUS MCKEESPORT, PA. PHONE
31389

N-20

10. BUTTE BOTTLERS' SUPPLY CO. 115 S.
MAIN ST. PHONE 549J / BOTTLERS'
SUPPLIES MALT & HOPS
11. HOSTER-COLUMBUS COMPANY INC.
COLUMBUS, OHIO / BRUIN NON
INTOXICATING A CEREAL BEVERAGE

N-29 CORRECTIONS

9. BLATZ BEER LINDAU DISTRIBUTING CO.
(96,339)
7. FREDERICK'S 4 CROWN PREMIUM BEER
PINTS-QUARTS-HALF GALLONS YARDS
1502 CHICAGO (BOTTLE)
FREDERICK'S (NECK LABEL) 4 CROWN
LAGER BEER (MAIN LABEL) (DELETE
1ST 'HALF' BEFORE QUARTS)
(96,158)

- N-35
10. HAMM'S BEER ANDERSON BEVERAGE CO.-
FAIRMONT, MINN.

- N-43
5. HAMM BEER & OLD FORESTER FLYNN
BEVERAGE CO.

- N-54
2. WEHLE ALE AND LAGER WEST HAVEN MULE
HEAD ALE

- N-56
10. REGAL BEER / SAME

- N-72
2. MILLER HIGH LIFE

- N-79
CAP LIFTER/BOTTLE STOPPER
(SEE N-10 & N-58)
MARKED "IT'S-A-CORKER PAT.PEND."
3 5/8"

LARRY BIEHL

1996 (1)

1. SIMON PURE

- N-80
CAP LIFTER/BOTTLE SHAPED/STEEL HANDLE
MARKED "OBERMEYER SOLINGEN GERMANY"
3 5/8"

BEN HOFEMAN

1996 (1)

1. JAX BEST BEER IN TO (WN NOT SHOWN)
FULLY AGED / SAME

- N-81
CAP LIFTER BLADE/SINGLE BLADE KNIFE/
KEY RING/TRIANGULAR SHAPED
MARKED "RUST FREE"

1 3/4"

JOSEPH KNAPP

1996 (1)

1. LITE BEER

- N-82
OPENER/SINGLE BLADE KNIFE/BOOT SHAPED/
CELLULOID HANDLE

(SEE N-5)

- # 1 MARKED "SYRACUSE KNIFE COMPANY"
3 1/4"

JOHN STANLEY/VIC KEOWN

1996 (1)

1. COLD SPRING ALE AUBURN, N.Y. / SAME
2. BLATZ

N-83

- CAP LIFTER/BOTTLE CAP RESEALER/
SWINGING SQUARE WIRE ??? ON BACKSIDE
(SEE N-9)

- MARKED "PAT.PEND DEPENDABLE MILWAUKEE"
3 1/4"

NORM JAY

1996 (1)

1. GEO. WALTER'S ADLER BRAU APPLETON
BEER

- N-84
OPENER/SCREWDRIVER/SINGLE BLADE KNIFE
OPENER BLADE HAS SCREWDRIVER TIP

(SEE N-18)

(ALSO N-3, 37, 41, 56, 75)

MARKED "U.S.A."

2 3/8"

DON WHELAN

1996 (1)

1. STORZ BEER LANTAFF BEV. CO.
BERESFORD, S.D.

O-5

37. CLIMAX BEVERAGES (PRODUCED BY HOME
BREWING CO. RICHMOND, VA.)

O-8

12. CRYSTAL ROCK PALE DRY READING, PA.
(SEE F-2-12)

13. KAIER'S MAHANAY CITY, PA.

14. KUEBLER BREWING CO. EASTON, PA.

O-16

2. STEGMAIER GOLD MEDAL BEER WILKES-
BARRE, PA.

O-17

- O-5 OPENER INSIDE METAL CROWN CAP CATCHER

MOUNTS WITH 2 SCREWS

MARKED "STARR 'X' PATENT 2,033,088

BROWN CO. N. NEWS, VA."

9" TALL & 5 1/2" WIDE

HAROLD QUEEN

1996 (1)

1. ROLLING ROCK (ON OPENER) POP YOUR
ROCKS ROLLING ROCK EXTRA PALE
PREMIUM BEER SAME AS IT EVER
WAS. "33" (ON CROWN CAP CATCHER)

O-18

- "TOOTHED" OPENER MOUNTS W/ 2 (OR 3) SCREWS
MADE BY "THE PROTECTOR MFG. CO."

4"

BEN HOFFMAN

1996 (1)

1. JOHN ARNOLD'S QUALITY BEVERAGES 1109
W. BALTO. ST. 1523 W. BALTO. ST.
(PROHIBITION OPENER)

P-1

15. JOS. SCHNAIDERS BREWING CO.

16. P. SCHOENHOFEN BREW. CO. CHICAGO.

P-7

44. C&J MICHEL BREWING CO. LA CROSSE,
WIS. DRINK ELFENBRAU WHOLESOME AS
SUNSHINE

46. RUHLAND THE BEER OF QUALITY OLD
STYLE BEER

47. BOTTLER OF JOS. STOECKLE'S EXTRA
FINE BEER & PORTER S.M. WOOD, 906
UPTON ST. CHESTER, PA. PURE WINES
& LIQUORS, PHONE 5048 AND LOCAL
166.

48. IF YOU WANT THE BEST DRINK
TANNHAEUSER EXPORT BEER BOTTLED
AT THE BREWERY (TRADEMARK)

P-8

191. G HEILEMAN BREWING CO LA CROSSE,
WIS. / SAME
192. KESSLER BREWERY / SAME
193. MOBILE BREWERY MOBILE, ALA. / SAME
194. PABST BLUE RIBBON THE BEER OF
QUALITY 901 WALNUT & 201 SEVENTH
STA / MILWAUKEE BEER CO AGTS
PABST BREWING CO DES MOINES, IA
WHOLESALE AND RETAIL DEALERS
195. JOHN G. SCHEMM BREWER AND BOTTLER
SAGINAW, MICH. W.S. / SAME
196. TOLEDO BREWING & MALTING CO., LTD.
WHITE LABEL / SAME
197. E. TOSETTI BREWING CO. / CHICAGO
EXPORT
198. HENRY WEINHARD -CITY BREWERY-
PORTLAND, ORE. / SAME

P-8 CORRECTIONS

106. ALABAMA BREWING CO. / BIRMINGHAM,
ALA. (ADD '/') (96,339)
44. AMERICAN BREWING ASS'N HOUSTON,
TEXAS / SAME (96,181)
93. M.K. GOETZ BREWING COMPANY ST.
JOSEPH, MO. / SAME (96,583)
150. THE STAR BREWERY CO. FAMOUS HOP GOLD
BREWED BY / PORTLAND, OREGON AND
VANCOUVER, WASH. (96,158)
82. WACKER & BIRK CHICAGO BREWERS OF
FINE BEERS / PALE PERFECTO
(96,158)

P-9

23. ANACONDA BREWING CO. / (ILLEGIBLE)
24. GENESEE BREW. CO. ROCHESTER, N.Y. /
SAME

P-10

72. PABST BEER / RAMLACK PITTSBURGH

P-14 CORRECTIONS

5. BILLINGS BREWING CO. OLD FASHION
BEER (DELETE USE P-66-6) (96,486)

P-15

10. ASK THE MAN FOR BALLANTINES (3
RINGS)
11. PEARL LAGER BEER (IN LOGO)
12. SCHLITZ STANDARD DISTRIBUTING CO.
DES MOINES, IOWA

P-17 CORRECTIONS

1. THE BEST YUENGLING'S PORTER, ALE AND
BEER, POTTSVILLE, PA. / SAME
(96,572)

P-19

65. ANHEUSER-BUSCH & SCHLITZ BEER J.E.
CHOISSER CO. WHOLESALE DEALERS IN
WINES, LIQUORS & CIGARS FORSYTH,
MONT.
66. HAMM'S BEER GOLDEN CREME MILLER HIGH
LIFE SUPREME DISTRIBUTORS, INC.
WHOLESALE DISTRIBUTORS FOR
LIQUOR-TOBACCO-CANDY 411 E.
WASHINGTON ST. PHOENIX, ARIZONA
67. WHOLESALE & RETAIL DEALER OF P.
SCHOENHOFEN BREWING CO.
COMPLIMENTS OF HANS LINDER
PAULLINA, IOWA

P-22

15. CHARLES STORCK'S BREWERY /
SCHLEISINGERVILLE, WIS.

P-22 CORRECTIONS

MAY OR MAY NOT HAVE "SPEED WORM"

P-23 CORRECTIONS

1. THE GUTSCH BREWING CO. / LIFE STAFF
LONG THE STORAGE BEER (ADD '/')
(96,339)

P-24

15. SAVANNAH BREWING CO'S "CHAMPAGNE" &
"CABINET" BEER / SAME

P-26

6. COMPLIMENTS OF THE NEEF BROS BREWING
CO. DENVER COL / DRINK CELEBRATED
WIENER MOERZEN
7. QUINCY BREW. CO. DICK & BROTHERS /
COMPLIMENTS OF DB (IN LOGO)

P-27 CORRECTIONS

1. BECK'S BEER A MASTERPIECE OF THE
BREWER'S ART (SHIELD) / SAME
(96,261)

P-33

6. SIOUX CITY BREWING COMPANY DRINK
HEIDEL BRAU -OR- WESTERN BREW.
BOTTLED BEERS

P-48

3. STULZ BROS (KC,MO BREWERY)

P-51

51. COMPLIMENTS OF ROBERT PORTNER
BREWING CO. J.W. GIBSON, MGR.
DANVILLE, VIRGINIA. / SAME

P-51 CORRECTIONS

21. SOUTHWESTERN BREWERY AND ICE COMPANY
ALBUQUERQUE, N.M. AUT. PHONE 292
COL. PHONE BLK. 93 / SAME
(96,158)
7. TENNESSEE BREWING CO. MEMPHIS,-TENN.
/ COLUMBIA EXTRA PALE PILSENER &
ERLANGER (ADD '/') (96,158)

P-53

6. RAINIER BEER LYNCH & HUPKINS
WHOLESALE AGENTS FOR

P-54

19. FENWAY ALE, LAGER & PORTER GREEN
RIVER RYE OLD STONE WHISKEY KEEP
A LITTLE IN THE HOUSE
20. HOME BREWING CO. INDIANAPOLIS HOME
BREW KING OF ALL BEERS
21. KITTANNING BREWING CO. BREWERS OF
K.B.C. BOHEMIAN & EXPORT BEER

P-57

21. TEXAS BREWING CO. FORT WORTH, TEXAS
/ SAME

P-57 CORRECTIONS

20. TENNESSEE BREWING CO. MEMPHIS, TENN.
/ COLUMBIAN EXTRA PALE AND
PILSENER. (96,572)

P-60

4. AGENTS FOR WM. J. LEMP BREWING CO.,
J. MUNCH & SONS HIGH GRADE WINES
& LIQUORS TOLEDO, O.

P-63 CORRECTIONS

1. DRINK GERST'S GOLD MEDAL BEER FOR
GENUINE SATISFACTION AS TO YOUR
INDIVIDUAL TASTE- (96,181)

P-61

4. EXCELSIOR BREWERY / SAME

P-62

2. BILLINGS BREWING CO., BILLINGS,
MONT.

P-66

6. BILLINGS BREWING CO. "OLD FASHION BEER"
7. BLATZ MILWAUKEE / LAGO-MARCINO-GRUPE CO.
8. GRAIN BELT BEER JOE ROUILLARD DIST.

P-68

CORKSCREW/BOTTLE OPENER/ICEPICK/
CAN OPENER/SLIDING CAN OPENER

P-73

4. THE BANNER BREWING CO.
5. EXCELSIOR BREWERY CO.

P-85

3. BREWED BY FALLS CITY BREWING CO.,
INC. LOUISVILLE, KY. PULL FOR AND
DRINK FALLS CITY LAGER BEER.
4. WIELAND BREWERY BAKERSFIELD, CA.

P-88

2. BURTON ALE & PORTER BREWERY.
3. NATIONAL BREWERY CO.

P-89

(DELETE TYPE WAS ALREADY LISTED AS P-73)

P-90

2. COMPLIMENTS OF BARTELS BREWING CO.
SYRACUSE, N.Y. / SAME
3. A. HUPFEL'S SON'S BREWERY NEW YORK
U.S.A / "OLD SETTER BRAND"

P-96 CORRECTIONS

MARKED "H. KESCHNER SOLINGEN GERMANY)

1. THE GUTSCH BREWING CO. / LIFE STAFF
LONG STORAGE BEER (96,162)

P-97

(DELETE TYPE WAS ALREADY LISTED AS P-88)

P-103 CORRECTIONS

2. MAIER & ZOBELEIN BREWERY LOS
ANGELES, CAL. DRINK PILSNER,
IMPERIAL & SELECT THE BEST AND
PUREST BREWED. (96,339)

P-116

WOOD HANDLE CORKSCREW
CAST IRON WIRE BREAKER & CAP LIFTER
NO BELL

MINIATURE VERSION OF NORMAL

WOOD HANDLE CORKSCREWS

3" WIDE AND 4 1/4" LONG

MARKED "WILLIAMSON'S" ON SHANK

MARKED "WILLIAMSON CO. NEWARK, NJ.

PATENTED DEC. 13'98" ON END OF WOOD HANDLE

MARK BARREN/DON SHERMAN

1996 (1-2)

2. ANHEUSER-BUSCH BREWING ASS'N DRAFT &
BOTTLED BEER COMPLIMENTS OF F.A.
HEIM, AGENT / 948 EAST 2ND
STREET 250 LOS ANGELES, CAL.
BOTH TELEPHONES
1. ANHEUSER-BUSCH BRG. ASS'N
COMPLIMENTS OF F.A. HEIM, AGENT,
DRAUGHT & BOTTLED BEER / 948
EAST 2ND STREET 250 LOS ANGELES,
CAL. BOTH TELEPHONES

P-117

WOOD HANDLE CORKSCREW
CAST BELL/4 SIDED HANDLE
MADE BY WILLIAMSON
BILL ENNIS

1996 (1)

1. BOHEMIAN CLUB BEER DISTRIBUTORS,
INC. PORTLAND, ORE. TEL. ATWATER
3121 / MADERA FORTIFIED WINES /
DON MARCO WINES FORTIFIED AND
DRY / BOHEMIAN CLUB BEER

P-118

WOOD HANDLE CORKSCREW
CAST IRON WIRE BREAKER
ABOVE CAST BELL (NO CAP LIFTER)
(SEE P-10, P-51, P-57 & P-82)
DON BULL/ART SANTEN

1996 (1)

1. SCHLITZ MILWAUKEE U.S.A. (GLOBE) /
SCHLITZ BEER (GLOBE)

P-119

BEAU BRUMMEL (ROUNDLET) TYPE
POCKET CORKSCREW
CORKSCREW STORES IN PLASTIC CASE
HANDLE SCREWS APART
FOLDING CORKSCREW SLIDES OUT
HANDLE SCREWED BACK TOGETHER
(SEE P-44)
BILL PATTIE

1996 (1)

1. RAINIER MILLER LITE CELLA CLAUSEN
DISTRIBUTING (HELENA, MONT)

P-120

CORKSCREW/CAP LIFTER BLADE/
DOUBLE BLADE KNIFE
ORNATE HANDLES
NO PEEPHOLE
(SEE P-25, P-38, P-69, P-123)
MARKED #1 "D. HERDER OHLIS GERMANY"
#2 "J.A. HENCKELS GERMANY"
BEN HOFEMAN/NORM JAY

1996 (1-2)

1. SCHADE BEER SPOKANE, WASH. / SAME
2. ADAM SCHEIDT BREWING CO. NORRISTOWN,
PA. / (ORNATE FLOWERS)

P-121

CORKSCREW/WIRE BREAKER/
DOUBLE BLADE KNIFE
MOTHER OF PEARL HANDLES
(SEE P-26, P-39, P-105, P-107)
MARKED "D. PERES SOLINGEN GERMANY
MAGNETIC CUTLERY CO."
NORM JAY

1996 (1)

1. JOLIET CITIZENS BREWING CO. (ON
MASTER BLADE)

P-122

CORKSCREW/CAP LIFTER/LEVERAGE HOOK
OPENER AND BODY FLOW IN ONE PIECE
"WAITERS' TOOLS"

(SEE P-20, P-21, P-27, P-28,
P-49, P-92, P-112)

NORM JAY

1996 (1)

1. PRIMA (CHICAGO, ILL)

P-123

CORKSCREW/SINGLE BLADE KNIFE/
CAP LIFTER-CIGAR CUTTER-WIRE CUTTER BLADE
ORNATE HANDLES

NO PEEPHOLE

(SEE P-25, P-38, P-69, P-120)

BILL PATTIE

1996 (1)

1. HAVRE BREWING & MALTING CO. PHONE
-
- 42A HAVRE, MONT. / SAME (BLADE
-
- MISSING)

P-124

WOOD HANDLE CORKSCREW WITH "DECAPITATOR"
STEEL WIRE, DOUBLE & TWISTED SHANK
STOPPER BUTTON
SINGLE HELIX

WOOD PROTECTIVE SLEEVE FOR CORKSCREW
(STRAIGHT HANDLE, SEE P-124)

DESIGNED BY WILLIAM R. CLOUGH

MECHANICAL PATENT NO. 950,509 (03/01/1910)
PATENT FOR "DECAPITATOR"

BEN HOFFMAN

1996 (1)

1. HORLACHERS 9 MONTHS BREWERY BOTTLED
-
- BEER TRY FREE'S PURE RYE TASTE
-
- THE STRENGTH NORTH GEORGE ST.
-
- YORK, PA. H. KISTER FREE
-
- (ILLEGIBLE) BY

Q-8

35. OLD MILWAUKEE BEER (WHITE ON RED)

Q-10

24. LONE STAR BEER (IN LOGO) THE
-
- NATIONAL BEER OF TEXAS (RED ON
-
- WHITE)

Q-11

12. BUDWEISER (EAGLE IN A) KING OF BEERS

Q-12

31. BUD DRY DRAFT BUD DRY DRAFT (BLUE &
-
- WHITE ON RED)

32. BUDWEISER PROUD TO BE YOUR BUD
-
- (WHITE ON RED)

33. MILLER GENUINE DRAFT MILLER GENUINE
-
- DRAFT (WHITE ON BLACK)

34. STROH'S (IN LION LOGO) (WHITE ON
-
- RED)

Q-18

49. ABE'S ALES & BEER (WHITE ON RED)
-
- (LINCOLN BREW. MINNEAPOLIS, MN)

50. BUDWEISER KING OF BEERS (BLACK ON
-
- YELLOW)

51. BUDWEISER KING OF BEERS (GOLD ON
-
- BLACK)

52. BUNKERHILL LAGER BEER (GOLD ON
-
- BLACK)

53. CATAMOUNT BREWED IN VERMONT (WHITE
-
- ON RED)

54. COLT BEER (WHITE ON RED)

55. FRANKENMUTH BREWERY, INC.
-
- FRANKENMUTH, MICHIGAN (BLACK ON
-
- DARK BLUE)

56. FRANKENMUTH BREWERY, INC.
-
- FRANKENMUTH, MICHIGAN (BLACK ON
-
- GREEN)

57. FRANKENMUTH BREWERY, INC.
-
- FRANKENMUTH, MICHIGAN (BLACK ON
-
- WHITE)

58. GREAT LAKES BREWING CO. CLEVELAND,
-
- OHIO (216) 771-4404

59. NATHAN HALE GOLDEN LAGER (PIC OF
-
- NATHAN HALE) (WHITE ON RED)
-
- (HARTFORD BREW. HARTFORD, CT)

60. MICHELOB BEER (GOLD ON RED)

61. MILLER BREWING COMPANY REMINDS YOU
-
- TO PLEASE THINK WHEN YOU DRIVE /
-
- GENUINE DRAFT LIGHT (GOLD & WHITE
-
- ON BLACK)

62. MILLER BREWING COMPANY REMINDS YOU
-
- TO PLEASE THINK WHEN YOU DRIVE /
-
- MILLER GENUINE DRAFT (GOLD &
-
- WHITE ON BLACK)

63. NEUWEILER (GOLD ON RED)

64. PENN DARK (BLACK ON BLUE)

65. SHARP'S (RED ON WHITE)

Q-18 CORRECTIONS

1. BUDWEISER KING OF BEERS (RED ON
-
- WHITE) (96,583)

Q-24

3. LITE BEER (WHITE ON BLUE)

Q-31

23. BUD. ICE (GREY ON BLACK)

24. BUD. ICE (WHITE ON BROWN)

25. BUD. ICE LIGHT (BLACK ON WHITE)

26. COORS ARTIC ICE U.F.O. (UNBELIEVABLE
-
- FROZEN OBJECT) (WHITE ON BLUE)

27. GRITTY'S PORTLAND'S ORIGINAL BREW
-
- PUB (PIC OF BEER VAT) (GREEN ON
-
- WHITE)

28. NEW AMSTERDAM AMBER BEER
-
- EXCEPTIONAL! (PIC OF SAILING
-
- SHIP) (GOLD & GREEN ON BLACK)

29. SARANAC GOLDEN (GOLD ON BLUE) (FX
-
- MAX MICRO BREW UTICA, NY)

30. SARANAC PALE ALE (GOLD ON BURGUNDY)
-
- (FX MAX MICRO BREW UTICA, NY)

31. THE SHIPYARD 1-800-BREW-ALE (WHITE
-
- ON BLUE)

Q-32

13. BOSTON BEER WORKS (PIC OF BOTTLE
-
- CAP) BREWERY GRILL 617-536-BEER
-
- (BLACK ON GREEN)

14. BOSTON BEER WORKS (PIC OF BOTTLE
-
- CAP) BREWERY GRILL 617-536-BEER
-
- (BLACK ON ORANGE)

15. BOSTON BEER WORKS (PIC OF BOTTLE
-
- CAP) BREWERY GRILL 617-536-BEER
-
- (BLACK ON PINK)

16. BOSTON BEER WORKS (PIC OF BOTTLE
-
- CAP) BREWERY GRILL 617-536-BEER
-
- (BLACK ON YELLOW)

17. BUDWEISER (PIC OF SHAMROCK) (WHITE
-
- ON GREEN)

Q-32

- 18. THE COMMONWEALTH BREWING COMPANY (BLACK ON PURPLE)
- 19. COORS ARTIC ICE (SMILEY FACE BOTTLE CAP) HAVE AN ICE DAY (WHITE ON BLACK)
- 20. KING COBRA
- 21. THE MANHATTAN BREWING COMPANY SOHO (PIC OF BEER VATS) (GOLD ON BLACK)
- 22. RED DOG (PIC OF BULL DOG) / YOUR ARE YOUR OWN DOG (BLACK & RED ON WHITE)
- 23. RED WOLF (BLACK ON RED)

Q-36

- 3. BUSCH-LIGHT-BEER (GREY ON DARK BLUE)
- 4. COLT ICE ICE BREWED MALT LIQUOR (BLACK ON WHITE)
- 5. COORS CUTTER (RED ON WHITE)
- 6. COORS EXTRA GOLD (GOLD ON BLACK)
- 7. COORS EXTRA GOLD LIGHT (BLACK ON GREY)
- 8. COORS LIGHT TEXAS MUSIC (BLUE ON WHITE)
- 9. ICE DRAFT LIGHT BEER
- 10. THE MILLER LITE DRINKERS (BLUE ON WHITE)
- 11. MOUNTAIN VALLEY BREW PUB (914) 357-0101 (PIC OF MOUNTAIN, TREE, BEER MUG) (GOLD ON GREEN)
- 12. OREGON ORIGINAL FINE ALES (ORANGE & BLACK ON WHITE)
- 13. SHINER BOCK (BROWN ON WHITE)
- 14. WIT! (RED ON WHITE) (SPRING STREET MICRO BREWERY)
- 15. YUENGLING ORIGINAL BLACK & TAN AMERICA'S OLDEST BREWERY (WHITE ON BLACK)
- 16. YUENGLING POTTSVILLE, PA. AMERICA'S OLDEST BREWERY (WHITE ON RED)
- 17. YUENGLING PREMIUM LIGHT AMERICA'S OLDEST BREWERY (WHITE ON BLUE)
- 18. YUENGLING TRADITIONAL LAGER AMERICA'S OLDEST BREWERY (WHITE ON BURGUNDY)
- 19. ZIMA CLEAR MALT (LIGHT BLUE ON DARK BLUE)

Q-49

**TWIST OFF CAP REMOVER/TAB LIFTER
3 1/8"**

DON VIROSTEK/BEN HOFFMAN

1996 (1)

- 1. FORT PITT BEER

R-4

**OPENER TOP IS HINGED FOR LIGHTER
R-4 CORRECTIONS**

- 1. IROQUOIS BEV. CORP. BUFFALO, N.Y. (COMBINATION LIGHTER-OPENER IN SHAPE OF IROQUOIS INDIAN FIGURE WITHOUT IMPRINT) (94,158) (96,406)

S-3

**GLASS MUG/OPENER FORMED IN GLASS BOTTOM
5"**

LARRY BIEHL/BILL MCKIENZIE

1996 (1)

- 1. COORS LIGHT THE SILVER BULLET FATHER OF THE YEAR (MARKED WITH VARIOUS YEARS AWARDED: 1987, 1988, ETC.)

A SINCERE THANK YOU TO THE FOLLOWING DEVOTED COLLECTORS WHO TOOK THE TIME TO SEND THEIR NEW ADDITIONS (UL'S) TO ME TO MAKE THIS LIST POSSIBLE. IT IS GREATLY APPRECIATED BY ALL OF US.

MEMBER NAME & NUMBER (# LISTED)

DEWAIN ALCORN 679 (2)
 MARK BARREN 406 (24)
 RON BEHNKEN 585 (3)
 LARRY BIEHL 202 (5)
 JOE CARDONE 4 (1)
 JOHN CARTWRIGHT 587 (10)
 MATTHEW CATON 722 (6)
 HERB DANZIER 246 (1)
 DAVE DUBRUL II 635 (1)
 WILLIAM ENNIS 250 (3)
 PAUL GAUVIN 333 (1)
 TOM GORMALLY 605 (2)
 FIL GRAFF 401 (2)
 JOHN HALL 666 (1)
 HERB HAYDOCK 13 (1)
 OLLIE HIBBELER 149 (5)
 BEN HOFFMAN 261 (45)
 JOHN HORN 211 (1)
 GLENN JANDT 188 (6)
 NORMAN JAY 181 (19)
 ART JOHNSON 213 (1)
 ART JOHNSON, JR 569 (2)
 MIKE KIMMONS 539 (2)
 JOSEPH KNAPP 703 (7)
 SAM MARCUM 665 (3)
 A A MAYBERRY 629 (1)
 DON MCDERMID 686 (2)
 BILL MCKIENZIE 153 (2)
 BOB MCNARY 712 (1)
 DARWIN MILLER 668 (2)
 LARRY MOTER 450 (4)
 BILL PATTIE 486 (19)
 JOE PACZKOWSKI 719 (2)
 HAROLD QUEEN 572 (9)
 SUSAN REYNOLDS 695 (1)
 TONY RICICKI 671 (1)
 ART SANTEN 158 (44)
 RAY SCHMEISSER 582 (3)
 DON SHERMAN 18 (1)
 HENRY SMITH (2)
 BOB STAHL 176 (9)
 JOHN STANLEY 339 (33)
 RALPH TEWKSBURY 515 (1)
 VERNE VOLLRATH 162 (3)
 PAUL WAGNER 227 (11)
 DON WHELAN 583 (37)
 HERB WHITE 618 (1)
 DARWIN WILCOX 296 (1)
 JOE YOUNG 314 (1)

Results of October 1995 JFO Auction Closing November 17, 1995

1	A-001-062	MANHATTAN WIS	\$22.60
2	A-001-UL	MANHATTAN	\$8.50
3	A-004-003	CASCADE EXPORT BEER	\$33.33
4	A-013-XX	RUSH & COMPANY	\$23.12
5	A-013-XX	OXFORD JUNCTION	\$16.25
6	A-021-UL	MANHATTAN	\$16.95
7	A-028-039	MCINNERNY'S	\$25.20
8	B-001-005	PITTSBURGH (STEEL)	\$25.00
9	B-014-014	FRANKENMUTH	\$7.50
10	B-014-019	M.K. GOETZ	\$0.00
11	B-014-046	YUENGLING'S	\$12.00
12	B-014-118	SAND SPRINGS	\$7.75
13	B-018-010	BUSHKILL	\$11.00
14	B-018-021	DICK'S	\$8.15
15	B-018-022	DUBUQUE	\$12.50
16	B-018-023	DUBUQUE	\$7.50
17	B-018-035	GRAND RAPIDS	\$10.30
18	B-018-045	MANITOWOC	\$8.00
19	B-018-259	CREAM CITY	\$7.50
20	B-018-402	20TH CENTURY	\$24.00
21	B-018-475	INDEPENDENT	\$20.00
22	B-018-UL	"BLATZ" MILWAUKEE	\$15.21
23	B-019-007	DICK BROS' PILSENER	\$13.25
24	B-019-062	DICK BROS' QUINCY	\$12.75
25	B-021-032	HUEBNER	\$7.50
26	B-021-039	INDEPENDENT	\$16.00
27	B-021-061	OLT	\$25.00
28	B-021-117	KOSTENBADER	\$11.00
29	B-021-163	GOETZ	\$12.00
30	B-023-035	BUCKEYE	\$15.00
31	B-024-023	MATHIE-RUDER	\$9.12
32	B-024-063	DICK'S	\$9.65
33	B-039-XX	HOTEL ALLEN WILLIS	\$11.65
34	B-048-XX	HELLER HARDWARE	\$7.12
35	B-065-XX	HOTEL OLDS	\$20.00
36	C-013-029	ELDREDGE	\$9.95
37	C-013-054	GRAUPNER'S	\$7.50
38	C-013-132	GEM	\$11.25
39	C-015-004	HARVARD	\$8.00
40	C-020-008	NEUWEILER'S	\$10.50
41	C-020-009	NORTH AMERICAN	\$8.00
42	C-022-002	JACOB RUPPERT	\$18.00
43	D-009-011	ZOLLER'S	\$9.95
44	E-003-066	STUTZ	\$8.50
45	E-004-005	ARROW	\$7.50
46	E-004-006	ATLANTIC	\$10.50
47	E-004-007	ATLAS	\$3.33
48	E-004-009	ATLAS	\$9.50
49	E-004-028	DICK BROTHERS	\$9.50
50	E-004-055	LION	\$7.50
51	E-004-057	MANHATTAN	\$7.50
52	E-004-164	DICK & BROS	\$10.50
53	E-005-009	HYDE PARK 75	\$7.50
54	E-009-004	VAL. BLATZ	\$7.50
55	E-009-019	JACOB RUPPERT	\$18.00
56	E-009-115	SCHMIDT	\$7.50
57	E-014-059	DICK BROS	\$6.75
58	E-014-095	FOX HEAD LAGER	\$7.50
59	E-014-174	LEINENKUGEL	\$4.25
60	E-014-286	TROMMER'S	\$12.00
61	E-014-333	BUDWEISER	\$8.25
62	E-014-416	OLD VIENNA	\$7.50
63	E-014-510	HIGHLANDER	\$7.50
64	E-014-823	SILVERTOP DUQUESNE	\$8.00
65	E-015-002	PETER HAND	\$10.25

66	E-020-001	ORTLIEB'S	\$12.50
67	F-002-009	SOUTH BETHLEHEM	\$25.00
68	F-002-021	BUDWEISER OR STAG	\$20.00
69	F-004-019	LINKO MALT	\$10.00
70	F-008-001	COLUMBIA	\$7.12
71	G-001-008	EBLING'S EXTRA	\$20.00
72	G-002-001	BOSTON BEER CO	\$10.00
73	G-002-005	HARVARD	\$9.00
74	G-002-006	PENNSYLVANIA DUTCH	\$9.00
75	G-004-019	JACKSON	\$18.50
76	G-004-XX	NEHI	\$8.25
77	G-009-001	BECK'S	\$9.00
78	G-009-016	PICKWICK ALE	\$16.00
79	G-009-038	SCHREIBER	\$12.00
80	G-028-018	GREAT LAKES	\$7.50
81	H-001-013	SUNSHINE	\$7.50
82	H-002-042	TRU-BLU	\$7.50
83	H-003-002	BEVERWYCK	\$7.50
84	H-003-002	BEVERWYCK	\$4.50
85	H-003-003	DICK BROTHERS	\$8.00
86	H-003-013	HOHENADEL	\$7.50
87	H-003-022	SCHLITZ (2 IN PACK)	\$13.50
88	H-004-001	PRIMA BEER	\$12.00
89	H-004-002	PRIMA SPECIAL	\$10.00
90	H-005-XX	PEPSI-COLA	\$8.25
91	H-005-XX	ALBERTA BREWERIES	\$8.25
92	H-008-002	BUCKEYE	\$32.65
93	H-008-003	DUQUESNE	\$11.00
94	H-011-002	BLATZ	\$5.35
95	I-015-049	RICHBRAU	\$7.50
96	I-016-011	LANCERS	\$3.75
97	I-019-031	STERLING	\$14.00
98	L-003-004	MICHELOB	\$10.11
99	L-004-006	CANANDAIGUA	\$10.60
100	L-004-014	KOPPITZ-MELCHERS	\$20.12
101	L-004-063	JOS SCHLITZ	\$14.00
102	L-004-UL	KOPPITZ-MELCHERS	\$10.00
103	M-001-005	HARVARD	\$14.00
104	M-003-005	EDELWEISS	\$21.50
105	M-003-017	SCHORR-KOLKSCHNEIDER	\$20.00
106	M-005-001	TIVOLI	\$7.75
107	M-009-001	BALLANTINE	\$8.00
108	M-021-001	RAINIER STERLING	\$41.25
109	M-035-001	STORZ	\$6.12
110	M-044-001	STORZ	\$6.12
111	M-054-001	STROH'S	\$7.50
112	M-062-001	SCHLITZ	\$28.77
113	N-009-017	GREENE KING ALES	\$10.50
114	N-009-021	OLD VIENNA	\$10.50
115	N-011-002	STONE'S	\$20.75
116	N-026-001	RICHBRAU	\$42.60
117	O-005-007	LUCKY LAGER	\$15.12
118	O-005-016	STERLING	\$17.50
119	O-005-019	FALSTAFF	\$8.25
120	P-007-025	LEISY	\$20.11
121	P-008-044	AMERICAN	\$25.00
122	P-008-149	KESSLER	\$42.00
123	P-020-001	BLATZ-MILWAUKEE	\$15.11
124	P-022-010	MOERLEIN	\$25.00
125	P-054-UL	SCHILLERS	\$37.77
126	P-057-UL	TEXAS	\$26.00
127	P-106-001	MOUND CITY	\$20.11
128	R-001-002	INTERNATIONAL	\$10.12

January 1996 Just For Openers Auction Closing February 14, 1996
--

NAME: _____

ADDRESS: _____

CITY: _____

STATE: _____ ZIP: _____

- 1) No Phone Bidding
- 2) Openers Sold to Highest Bidder
- 3) Identical Bids, Earliest Bid Wins
- 4) 7 Days to Return If Not Satisfied
- 5) Openers Shipped Upon Payment
- 6) Results Shown Next JFO Issue
- 7) Shipping and Handling Extra

Send Bids To: John Stanley 3712 Sunningdale Way Durham, NC 27707-5684
 JFO # & Description are from the
 1995 Handbook Of United States Beer Advertising Openers and Corkscrews
 Conditions (CS): FR (Fair), G (Good), VG (Very Good), EX (Excellent), M (Mint)
 (UL-Unlisted in 95 Handbook, XX-Non-USA-Beer)

#	JFO #	Description	ST	CS	BID
001	A-001-004	THAT GOOD CRYSTAL ROCK BEER (VAR (A) CLOTHED)	OH	G	
002	A-004-009	LEISY BEER PEORIA, ILL.	IL	G	
003	A-004-015	LEISY'S TEMP-BREW	IL	G	
004	A-005-UL	EPICURE MALT COMPANY USE "OLD HONESTY MALT" 1538A DORCHESTER AVENUE DORCHESTER, MASS.	MA	VG	
005	A-005-XX	H&H PHONE 2-1685 COLD BEER PROMPTLY DELIVERED		EX	
006	A-007-014	DRINK OERTEL BREW CREAM BEER	KY	VG	
007	A-008-001	IN YOUR HOME USE JACOB RUPPERT KNICKERBOCKER	NY	VG	
008	A-009-004	THE ISAAC LEISY BREWING CO. CLEVELAND, O. PHONES CUYAHOGA-ERIE 234 BELL-HARVARD 730	OH	G	
009	A-012-020	SAY "OK" FOR O'KEEFE / WELCOME SHRINERS (CANADIAN)		EX	
010	A-012-XX	BLANKS EVERETT / SAME		VG	
011	A-012-XX	NU-ON PRODUCTS CO. 1012 MISSION ST. S.F.	CA	G	
012	A-013-007	"HOME OF TANNHAEUSER" MEET ME AT 'YORKS BEST' 'THE A.C. BOLL CAFE' 34-36 SO. GEORGE ST.	PA	G	
013	A-015-004	COOK'S EVANSVILLE, IND.	IN	G	
014	A-015-028	"IF LOST" RING UP A. GETTELMAN BRG. CO. MILWAUKEE, WIS.	WI	VG	
015	A-020-XX	PAUL J. LUCAS FUNERAL DIRECTOR 830 E. RACE ST. SHAMOKIN, PA.	PA	EX	
016	A-021-002	BLATZ MILWAUKEE / BLATZ OLD HEIDELBERG	WI	G	
017	A-028-002	CONSUMERS PRODUCTS CO. BROOKLYN, N.Y. / USE PILSER BRAND MALT & HOPS	NY	G	
018	A-028-009	FLOWER CITY BREWING CO. ROCHESTER, N.Y. MALTOP A-BEER ACME ALE	NY	G	
019	A-029-018	PABST BLUE RIBBON BREW / THE BREW THAT BRINGS BACK-MEMORIES	WI	VG	
020	A-029-038	ASK FOR OLD VIENNA WAPAKONETA, OHIO	OH	G	
021	A-031-XX	GET THE NATIONAL HABIT CASH IN ON NATIONAL OIL SEALS		EX	
022	A-035-XX	DRINK GAY-OLA SATISFIES THIRST 5C / DRINK GAY- OLA IT'S BETTER 5C		EX	
023	A-035-XX	DRINK GAY-OLA SATISFIES THIRST / DRINK GAY-OLA IT'S BETTER (BRASS COULD BE REPRODUCTION)		EX	
024	A-044-001	CREAM CITY BREWING CO. FAMOUS MILWAUKEE PILSENER BEER	WI	EX	

January 1996 Just For Openers Auction Closing February 14, 1996
--

025	B-001-005	PITTSBURGH BREWING CO. TECH BEER (BRASS)	PA	FR	
026	B-006-XX	DRINK "CANADA DRY" PALE GINGER ALE		VG	
027	B-013-XX	SHAW'S LIQUORS-OFF AND ON SALE VISALIA, CALIF.	CA	EX	
028	B-013-XX	YELLOW CAB CO. PHONE 224 KING CITY, CAL.	CA	VG	
029	B-013-XX	"BAKER HOTEL-DALLAS"	TX	VG	
030	B-013-XX	CUBAN ROOM S.F. CAL.	CA	EX	
031	B-014-014	FRANKENMUTH PRODUCTS CO. FRANKENMUTH, MICH. / USE GOLD MEDAL MALT EXTRACT	MI	VG	
032	B-014-054	KINGSBURY BREWERIES CO. KINGSBURY PALE BEER / THE ARISTOCRAT OF THEM ALL MANITOWOC, WIS.	WI	G	
033	B-014-055	MINNEAPOLIS BREWING CO. MINNEAPOLIS U.S.A. MINNEHAHA	MN	G	
034	B-014-075	BERGHOFF FORT WAYNE / DRINK DORTMUNDER BEER	IN	VG	
035	B-014-XX	COMPLIMENTS OF HOTEL SAINTE CLAIRE SAN JOSE	CA	EX	
036	B-014-XX	NEHI		VG	
037	B-014-XX	GRAND INN		VG	
038	B-018-UL	EASTON MALT & HOP STORE A. TOFF, PROP. 650 NORTHAMPTON ST. TEL. 1006	PA	VG	
039	B-018-XX	GOLDEN WEST BREWERY LTD. CALGARY ALTA. (CANADIAN)		VG	
040	B-019-035	SEATTLE BREWING & MALTING CO. SEATTLE, WASH. U.S.A. / KEY TO RAINIER BEER	WA	VG	
041	B-021-044	KALAMAZOO BREWING CO. KALAMAZOO, MICH. CALL FOR THE BREW FROM KALAMAZOO	MI	EX	
042	B-021-072	RUHSTALLER'S LAGER BEST BEER BREWED SACRAMENTO, CAL.	CA	VG	
043	B-021-084	TACOMA EXTRA PALE 'GET IT'	WA	VG	
044	B-021-470	COMPLIMENTS OF JOHN KAZMAIER ALTOONA, PENNA.	PA	EX	
045	B-021-XX	COMPLIMENTS OF THE OWL DRUG CO		G	
046	B-021-XX	KREUTZER BOTTLING WORKS FOR THIRST TRY US FIRST PERU, IND.	IN	G	
047	B-022-035	KEY TO SCHREIBER BEER BUFFALO, N.Y.	NY	G	
048	B-022-099	DRINK FITGER'S (STAR) BEER	MN	G	
049	B-022-XX	MURPHYSBORO BOTTLING CO	IL	G	
050	B-022-XX	WESTPORT CARBONATING WORKS MASTER BOTTLERS H.P.M. 1916 K.C. MO.	MO	FR	
051	B-023-002	BARTHOLOMAY APOLLO BEER ROCHESTER, N.Y. / BARTHOLOMAY CHIC ALE ROCHESTER, N.Y.	NY	VG	
052	B-023-008	TRY EHRET'S EXTRA / (TRADEMARK)	NY	G	
053	B-023-XX	ARNOLD SODAS		EX	
054	B-023-XX	SAEGERTOWN GINGER ALE		EX	
055	B-024-001	ACME BEER	CA	VG	
056	B-024-004	BUFFALO BREWING CO. SACRAMENTO, CALIF.	CA	VG	
057	B-024-010	DRINK DUTCH CLUB BEER / SAME	PA	G	
058	B-024-013	GB LAGER	CA	VG	
059	B-024-016	GOLDEN GLOW BEER	CA	VG	
060	B-024-017	GRIESEDECK BROS. ST. LOUIS	MO	G	
061	B-024-018	HOMESTEAD BREWERY HO-4242 HEIGH-HO PREMIUM BEER / HOFBRAU BEER HO-4242 BY CASE-BARREL OR TRUCKLOAD	PA	VG	

January 1996 Just For Openers Auction Closing February 14, 1996
--

062	B-024-020	DRINK IRON CITY BEER "THE TALK OF THE TOWN" / SAME	PA	VG	
063	B-024-052	MATHIE-RUDER BREW. CO. WAUSAU, WISCONSIN ENJOY RED RIBBON & NORTH STAR BEER	WI	VG	
064	B-024-XX	ROCK SPRING WATER GINGER ALE		VG	
065	B-034-XX	"EVERYBODY'S DRINKEN IT" LEMON-KOLA		FR	
066	B-035-XX	ITALIAN IMPORTING CO. S. 152 BROWNE ST., SPOKANE PHONE RIVERSIDE 2444	WA	VG	
067	B-035-XX	HOTEL CALIFORNIAN FRESNO, CA.	CA	EX	
068	B-035-XX	HOTEL FONTENELLE		EX	
069	B-035-XX	CORKING GOOD CLOTHES JACOB MAYER ON THE SQUARE EASTON, PA.	PA	EX	
070	B-044-XX	GORDON GIN		G	
071	B-044-XX	J.H. CUTTER WHISKEY / GORDON GIN		FR	
072	B-063-009	INDIANAPOLIS BREWING CO. DUESSELDORFER THE WORLD'S STANDARD OF PERFECTION	IN	G	
073	C-006-009	BLACK BASS ALE / CONGRESS LAGER DERBY CREAM ALE	NY	FR	
074	C-010-012	KOERBER'S BEER AGE-STRENGTH-PURITY	OH	VG	
075	C-012-114	X WASHINGTON DUB-L-EX PILSENER STYLE X	OH	EX	
076	C-013-019	DETROIT BREW. CO. OLD BRU BEER (BOTTLE)	MI	M	
077	C-013-022	DOBLER SINCE 1865	OH	G	
078	C-013-034	FECKER'S BEER	IN	G	
079	C-013-063	KINGS BEER (BOTTLE & CROWN)	NY	EX	
080	C-013-081	PABST BLUE RIBBON BREW (BOTTLE) / THE BREW THAT BRINGS BACK MEMORIES (BOTTLE)	WI	EX	
081	C-013-099	SCHMIDT'S FAMOUS AMERICA'S FINEST BEER EST. 1873 (BOTTLE)	MN	G	
082	C-013-112	TERRE HAUTE BREWING CO. INC. CHAMPAGNE VELVET BEER / CHAMPAGNE VELVET BEER (BOTTLE)	IN	VG	
083	C-013-113	ASK FOR TIVOLI BEER		G	
084	C-013-134	FROM THE CYPRESS CASKS OF GOEBEL (CREST)	MI	VG	
085	C-013-188	REISCH GOLD TOP BEER SPRINGFIELD, ILL.	IL	VG	
086	C-014-013	ROCHESTER BREWING CO. INC. OLD TOPPER ALE (MAN IN TOP HAT)	NY	G	
087	C-016-XX	GREEN SPOT FRUIT JUICE BEVERAGES		VG	
088	C-017-049	MONARCH BWG. CO. CHICAGO MONARCH BEER	IL	VG	
089	C-017-052	ROCHESTER BREWING CO. GOLDEN OLD TOPPER ALE-BEER (MAN IN TOP HAT)	NY	G	
090	C-017-056	PERPLIES BEER BREWED WITH ARTESIAN WELL WATER	WI	VG	
091	C-018-001	BLATZ MILWAUKEE'S FINEST BEER	WI	G	
092	C-019-005	HUDEPOHL PURE LAGER BEER	OH	G	
093	C-036-XX	ALBERTA BREWERIES (YOU PAY SPINNER)		VG	
094	CIGAR	RUDOLFO THE CIGAR OF RECOGNIZED QUALITY SAN FRANCISCO LOS ANGELES (CIGAR BOX OPENER, SEE JFO/OCT/95 PAGE 27 "MOST COMMON STYLE")	CA	EX	
095	D-002-006	SCHLITZ / SAME	WI	VG	
096	D-006-001	BRUCK'S	OH	VG	
097	D-009-011	ZOLLER'S BEER / SAME	IA	EX	
098	D-012-007	MASS BREW CO / BOSTON	MA	VG	
099	E-003-XX	SELTZER'S GINGER ALE / SELTZER & RYDHOLM AUBURN & PORTLAND		G	

January 1996 Just For Openers Auction Closing February 14, 1996
--

100	E-004-014	BLATZ MILWAUKEE / DRINK OLD HEIDELBERG BREW	WI	G	
101	E-004-020	CENTLIVRE BEER FORT WAYNE	IN	VG	
102	E-004-021	CENTLIVRE BRG. CORP. FORT WAYNE / NICKEL PLATE BEER	IN	G	
103	E-004-034	FALLS CITY EXTRA PALE LAGER / FALLS CITY SPECIAL LAGER	KY	G	
104	E-004-047	HUDEPOHL BREWING CO. / CINCINNATI OHIO (SCREWDRIVER TIP)	OH	EX	
105	E-004-049	INDEPENDENT MILWAUKEE BREWERY / BRAUMEISTER BEER	WI	G	
106	E-004-050	MANITOWOC PRODUCTS CO. MANITOWOC, WIS. / KINGSBURY PALE	WI	G	
107	E-004-068	PRIMA BEER / CHICAGO PHONE MOHAWK 2300	IL	G	
108	E-004-203	WAYNE BRG. CO. ERIE PA. / WAYNE BREW (SCREWDRIVER TIP)	PA	VG	
109	E-004-247	HOLLER FOR ZOLLER / DAVENPORT, IOWA	IA	VG	
110	E-005-010	LATROBE BREWING CO. ... (SEE HANDBOOK FOR REST)	PA	EX	
111	E-006-007	BOHEMIAN CLUB / SAME		G	
112	E-006-023	FESENMEIER BR'WG CO. HUNTINGTON, W.VA. / W.VA. SPECIAL BEER & ALE	WV	VG	
113	E-006-055	THE VICTOR BREWING CO. JEANNETTE, PA. / SAME	PA	VG	
114	E-006-056	THE AUGUST WAGNER & SONS BREWING CO. COLUMBUS, O. / AUGUSTINER GAMBRINUS	OH	VG	
115	E-006-067	BURKHARDT'S BEER AND ALE / SAME	MA	G	
116	E-006-079	MINNEAPOLIS BREWING CO. THE MINNEAPOLIS BEER / GOLDEN GRAIN BELT BEERS CANTERBURY ALE	MN	G	
117	E-006-090	TRENTON OLD STOCK BEER / SAME	NJ	VG	
118	E-006-096	BURGER BREWERY ZINZINNATI / BURGER BEER BURGER ALE	OH	VG	
119	E-006-153	TRU-BLU BEER NORTHAMPTON, PA. / SAME	PA	VG	
120	E-007-026	FALSTAFF ST. LOUIS	MO	EX	
121	E-008-083	GIPPS BREWING CO. PEORIA, ILL. / SAME	IL	G	
122	E-008-085	LEXINGTON BREWING CO. LEXINGTON, KY. / CHOICE BOTTLE BEERS BEST NEAR BEERS	KY	G	
123	E-008-XX	AL-SI-CO LIMITEE AL-SI-CO LIMITEE (CANADIAN AND HAS 3 FRETS)		VG	
124	E-009-001	ANHEUSER-BUSCH ST. LOUIS MISSOURI. / SAME	MO	VG	
125	E-009-004	VAL. BLATZ BRG. CO. MILWAUKEE, WIS. / BLATZ PRIVATE STOCK LEADS THEM ALL	WI	VG	
126	E-009-024	BUCKEYE B. CO. GREEN SEAL BEER / SAME	OH	G	
127	E-009-046	SCHLITZ MILWAUKEE / THE DRINK THAT MADE MILWAUKEE FAMOUS	WI	EX	
128	E-009-091	GRAND PRIZE LAGER BEER / SAME	TX	G	
129	E-009-103	NEW ORLEANS BREW. CO. DRINK 4X OLD STOCK / SAME	LA	EX	
130	E-014-007	ALTES LAGER / THE ONLY EASTERN BEER MADE IN THE WEST	CA	M	
131	E-014-030	BRACKENRIDGE BREW. CO. INC. HIGHLAND 2929 / OLD ANCHOR BEER	PA	EX	
132	E-014-059	DICK BROS. BRG. CO. QUINCY, ILLINOIS / SAME	IL	VG	
133	E-014-092	FORT PITT SPECIAL BEER / OLD SHAY DELUXE BEER AND ALE	PA	G	
134	E-014-125	GREAT FALLS LAGER BEER	MT	VG	
135	E-014-135	THEO. HAMM BRG. CO. ST. PAUL, MINN. / THE BEER REFRESHING	MN	G	

January 1996 Just For Openers Auction Closing February 14, 1996
--

136	E-014-138	PETER HAND BREWERY CO. MEISTER BRAU	IL	VG	
137	E-014-177	LUCKY LAGER AGE-DATED BEER / SAME	CA	EX	
138	E-014-223	PILSEN BREWING CO. CHICAGO, ILL. / YUSAY BEER YUSAY BEER	IL	VG	
139	E-014-245	ROYAL "58" BEER ROYAL "58" BEER / MAKE A DATE WITH "58" MAKE A DATE WITH "58"	MN	EX	
140	E-014-246	RUPPERT BEER AND ALE / RUPPERT FOR THAT SMILE OF PLEASURE	NY	VG	
141	E-014-334	BUFFALO BEER BUFFALO BEER / SAME	CA	G	
142	E-014-473	BLITZ-WEINHARD BLITZ-WEINHARD / SAME	OR	M	
143	E-014-574	WEHLE COLONIAL ALE / WEHLE MULE HEAD ALE	CT	VG	
144	E-014-696	ROYAL BOHEMIAN / SAME		VG	
145	E-014-XX	BROOKS 7 UP WESTERN MICH. / FRESH UP DRINK 7 UP	MI	VG	
146	E-014-XX	FAMILY FUND LIFE INS. CO. / A BURIAL FUND FOR EVERY MEMBER OF THE FAMILY		EX	
147	E-014-XX	THE CASTLE CORP. HASTINGS, MICH. / DROUT DROUT	MI	VG	
148	E-027-007	HIGH TEST MALT EXTRACT CO. PHONE WEST 2070 CHICAGO, ILL. / NO - BOIL AND BOHEMIAN STYLE	IL	G	
149	F-006-007	HUEBNER TOLEDO BEER / BETTER THAN THE IMPORTED	OH	G	
150	F-006-016	BECKER PRODUCTS CO. OGDEN, UTAH / SAME	UT	G	
151	F-013-001	GUTSCH BREWING COMPANY SHEBOYGAN, WISCONSIN.	WI	VG	
152	F-017-001	ADEL BRAU / SCHOENS	WI	M	
153	G-001-004	BUCKEYE BEER PICKS YOU UP (WAITER)	OH	G	
154	G-001-010	FOX HEAD WAUKESHA, WIS. (BOTTLE)	WI	EX	
155	G-001-029	ANN ARBOR OLD-TYME-BRU BEER (BOTTLE)	MI	G	
156	G-001-044	KEELEY (BOTTLE)	IL	G	
157	G-001-046	BERGHOFF 1887 BEER	IN	VG	
158	G-003-007	LANG'S BEER AND ALE	NY	EX	
159	G-004-002	BLATZ BEER FOR GOOD TASTE	WI	VG	
160	G-008-004	DAWSON'S BREWERY, INC. NEW BEDFORD, MASS. / TIME OUT FOR DAWSON'S ALE & BEER	MA	VG	
161	G-008-021	INDEPENDENT MILWAUKEE BREWERY MILWAUKEE, WISCONSIN / BRAUMEISTER SPECIAL PILSENER BEER	WI	EX	
162	G-009-024	STEGMAIER BREWING CO. WILKES BARRE, PA. / STEGMAIER'S GOLD MEDAL BEER (WHITE ON BLUE)	PA	VG	
163	G-009-025	STEGMAIER BREWING CO. WILKES BARRE, PA. / STEGMAIER'S GOLD MEDAL BEER (GOLD ON RED)	PA	EX	
164	G-013-001	AMERICAN BREWING CO.		VG	
165	H-002-004	BERGHOFF FORT WAYNE	IN	VG	
166	H-002-004	BERGHOFF FORT WAYNE	IN	VG	
167	H-002-009	CARNEGIE BEER "THE BEST OF ALL"	PA	G	
168	H-002-040	TERRE HAUTE BREWING CO. TERRE HAUTE, IND. CV THE BEER WITH THE MILLION DOLLAR FLAVOR	IN	VG	
169	H-002-075	WEST VIRGINIA PILSNER BEER	WV	VG	
170	H-002-XX	JOYCE SEVEN UP JOILET, ILLINOIS	IL	G	
171	H-002-XX	S & S GINGER ALE		G	
172	H-003-006	EDELWEISS A CASE OF GOOD JUDGMENT	IL	VG	
173	H-003-018	DRINK MONARCH THE GREAT BEER	IL	VG	
174	H-003-023	THE WILLIAM SIMON BREWERY, BUFFALO, N.Y. SIMON PURE BEER ALE	NY	VG	

January 1996 Just For Openers Auction Closing February 14, 1996
--

175	H-007-002	BLATZ MILWAUKEE'S MOST EXQUISITE BEER	WI	G	
176	I-007-021	PETER HAND BREWING CO. MEISTER BRAU "THE BEER"	IL	VG	
177	I-008-002	NORTHAMPTON BREWERY CORP. NORTHAMPTON, PA. TRU-BLU BEER AND ALE	PA	VG	
178	I-019-020	HAMM'S BEER SINCE 1865 (IN LION LOGO) / BORN IN THE LAND OF SKY BLUE WATERS	MN	EX	
179	J-007-002	COORS BEER GOLDEN, COLO.	CO	VG	
180	L-001-007	SCHLITZ	WI	VG	
181	M-002-017	THE CROWN BR'G CO. CINCINNATI HAPPY DAYS BEER ('HAPPY DAYS BEER THE CROWN BREWING CINCINNATI' ON BOTTLE)	OH	G	
182	M-003-001	BEVERWYCK BREWERIES INC. / ALBANY, NEW YORK / FAMOUS BEVERWYCK BEERS ALES (GREEN)	NY	VG	
183	M-003-007	GUNTHER'S "THE WORD FOR QUALITY BEER" / BREWERS SINCE 1881 / BALTIMORE, MD. (RED)	MD	VG	
184	M-003-012	THE GERMAN BREWING CO. / CUMBERLAND, MD. / THE ORIGINAL OLD GERMAN BEER (RED) (OTT)	MD	VG	
185	M-003-014	PIEL'S FINE LAGER BEERS / ESTABLISHED 1883 / BROOKLYN, N.Y. (RED)	NY	G	
186	M-003-029	THE VICTOR BREWING CO. / (TM) DRINK VICTOR BEER FAMOUS FOR IT'S FLAVOR / JEANNETTE, PENNA. (RED)	PA	G	
187	M-018-001	HONORARY BUDWEISER BREWMASTER 7 GOLDEN KEYS / THIS CALLS FOR BUD...7 GOLDEN KEYS	MO	VG	
188	M-019-005	AUGUST A. BUSCH JR. (SIGNATURE) / 1968 SALES CONVENTION (EAGLE IN A) (MINT IN ORIGINAL BOX)	MO	M	
189	M-054-003	GEYER BROS. BREWING CO. FRANKENMUTH, MICHIGAN FOUNDED - 1862 / AMERICAS SMALLEST BREWERY HOME OF THE ORIGINAL FRANKENMUTH BAVARIAN BEER	MI	EX	
190	M-074-002	PANDA BEER / GREENWAYS INC. SYRACUSE, N.Y. PHONE 2-1177	NY	VG	
191	N-029-009	BLATZ BEER LINDAU DISTRIBUTING CO.	WI	EX	
192	O-004-030	COMPLIMENTS M.K. GOETZ BREW. CO. ST. JOSEPH & KANSAS CITY, MO. (MINT IN THE BOX)	MO	M	
193	O-005-UL	CLIMAX BEVERAGES (PRODUCED BY HOME BREWING CO. RICHMOND, VA.) (WITH BOX)	VA	M	
194	P-005-001	ANHEUSER-BUSCH (LARGE LETTERS)	MO	VG	
195	P-006-001	DRINK F AND S BEER SHAMOKIN, PA.	PA	FR	
196	P-007-033	SOLE DISTRIBUTORS IN BOSTON FOR PIEL BEER DRAUGHT AND BREWERY BOTTLING (SEE HB FOR REST)	MA	VG	
197	P-010-UL	PABST BEER / RAMLACK PITTSBURGH	PA	G	
198	P-013-001	SCHLITZ MILWAUKEE U.S.A. / SAME (SCHLITZ GLOBE LOGO WITH BOTTLED BEER ON GLOBE) (WEAR TO MILWAUKEE ON ONE SIDE)	WI	EX	
199	P-019-XX	CONNECTICUT BEER DISTRIBUTORS, INC. WINES, LIQUORS AND BEERS 471 MAIN MIDDLETOWN, CONN. WE DELIVER PHONE 756	CT	EX	
200	P-023-001	THE GUTSCH BREWING CO. / THE LIFE STAFF LONG STORAGE BEER	WI	G	
201	P-043-005	STROH'S BEER DETROIT / SAME	MI	VG	
202	P-090-XX	BONFIELD SPECIAL BOURBON / JACOB DUDENHOEFER CO. 339-341 FIRST AVE. MILWAUKEE, -WIS.	WI	G	
203	P-103-002	MAIER & ZOBELEIN BREWERY LOS ANGELES, CAL. DRINK PILSNER, IMPERIAL & SELECT THE BEST AND PUREST BREWED.	CA	G	
204	R-002-004	IROQUOIS BEVERAGE CORP. BUFFALO, N.Y. IROQUOIS INDIAN HEAD BEER AND ALE (BRASS TONE-TIN & STEEL INDIAN FIGURE)	NY	EX	

MERRY CHRISTMAS & HAPPY NEW YEAR

JUST FOR OPENERS

18TH ANNUAL CONVENTION REGISTRATION
APRIL 24-28, 1996

HYATT HOTEL
Route 34
Lisle, IL

Register at the Hotel by Calling 1-800-233-1234
(Rate is \$68.00/Night)

(Rooms will be Reserved on 2 Floors, 1 Smoking & 1 Non-Smoking)
(Tell them you are with the Just For Openers Group)

COME TO CHICAGO FOR AN EXCITING JFO CONVENTION.

MEMBER REGISTRATION FEE - \$40.00
(INCLUDES HOSPITALITY ROOM, CONVENTION OPENER & ONE SHOW TABLE)

NAME: _____

ADDRESS: _____

CITY _____ STATE(PROVINCE) _____ ZIP _____

DATE YOU WILL ARRIVE _____ APPROXIMATE TIME _____

DATE YOU WILL LEAVE _____ (NEED TO KNOW FOR PLANNING PURPOSES)

HOW WILL YOU ARRIVE? CAR ___ PLANE ___ TRAIN ___ OTHER _____

NAME(S) FOR CONVENTION BADGE: _____

MAKE CHECKS PAYABLE TO YOUR CONVENTION HOST (NORM JAY) FOR 1996

NORM JAY
839 JAMES CT
WHEATON, IL 60187
PHONE (708) 690-1565

***** BRING A DISPLAY !!! *****

Chicago April 24-28, 1995

The Place to be for Openers & Corkscrews

Contact
Norm Jay