

JUST FOR OPENERS

PO Box 64 Chapel Hill, NC 27514-0064 (919) 419-1546
Past Editors Don Bull (1979-83) Ed Kaye (1984-1988) Art Santen (1989-1993)

Membership Renewals / Annual Dues \$20.00

If the label on your Newsletter Mailing Envelope has an Expiration Date of 06/30/97, please pay your dues now. A membership renewal card should be enclosed. Other members please verify the expiration date shown on your mailing label. If you do not agree with the date please notify me.

1997 Convention Buffalo, NY (April 23rd to 27th 1997)

It's not too late to come to Buffalo. If you have a last minute change of heart, please notify Mark Barren, (716) 778-9724, now. As of March 24th Mark had 33 members signed up for the convention and we expect the final number to be over 40. Don't miss out on this great opportunity to add openers and corkscrews to your collection while seeing some really great displays. If nothing else just come and have fun in the hospitality room for four days. A small map with the Lord Amherst location is enclosed. Remember to bring a display and yes we are going to have "The Best in Show Award" again for any new discovery or addition not in the 1997 Handbook. This award class is limited to just one opener or corkscrew. So bring that previously unknown find to the convention.

Convention Itinerary

Wednesday April 23rd	Early Arrivals & Room-To-Room Trading
Thursday April 24th	Arrivals & Room-To-Room Trading/Brew Pub Tour
Friday April 25th	Room-To-Room Trading/Niagara Falls Tour (10-2)/Auction
Saturday April 26th	Trade Show (9-3)/Group Dinner at Shannon Brew Pub
Sunday April 27th	Go Home and Start Getting Ready for San Francisco in 1998

1998 Convention San Francisco, CA (April 22nd to 26th 1998)

The 1998 Convention is tentatively set for April 22-26 at the Hotel Californian in San Francisco. As I go to press with this issue we do not have an official hotel contract but are very close to signing one. I will have the official details by the Buffalo convention and for sure by the July JFO issue. The room rate for the Hotel Californian is \$80 (a 14% tax will be added to that). Rates are not cheap in San Francisco but I felt many members would want to be close to the many tourists sites. This will be our 20th convention.

Member's Update

Larry Biehl had another kidney operation and is doing fine. Fran and he are planning on being in Buffalo for the convention. Ollie Hibbeler is having surgery the first week of April and for the second time since 1979 will miss a JFO convention. His wife Shirley was unable to miss time from her school bus driving job and Ollie decided it would be best to stay at home and recuperate from his surgery.

Bill McKenzie Passes Away (March 10th)
--

It is with great sadness I report the passing of Bill McKenzie. Bill had been unable to receive the second bone marrow transplant that was scheduled and died from the complications of Leukemia. He went peacefully in his sleep. Our thoughts and prayers are with the McKenzie family.

Bill was one of the early members of JFO. He was a major contributor to the newsletter for many years with his articles on "Opener Trivia". His articles were a source of great knowledge and his opener drawings were better than pictures. Bill attended every convention until bad health forced him to miss the 1994 convention.

I first met Bill at the 1986 Fort Myers Convention. The first opener I bought at a convention was the B-32 Manhattan Coca-Cola opener shown in the last issue and Bill sold it to me. It has always been one of my favorites. Bill was the member who was always smiling and willing to help the new convention attendees. Early on he was the member I would always go to for advice when I was going to buy or sale an opener or corkscrew. He has been greatly missed at the last couple of conventions and now I will have to look forward to seeing him again at the big JFO Convention in heaven.

Bill always brought a first rate display to the convention. He put a lot work and effort into his displays and was a frequent show winner. In fact he won so many times that he told me was embarrassed about it and I told him that members loved seeing his displays and that he should really be proud of his contribution. Bill was also an excellent source of "New Discoveries", but once again he did not want any recognition. He wanted other members to have credit for finding the "New Discovery" when he was really the one who had done so.

For corkscrew collectors Bill always brought a great selection of corkscrews for sale at the convention. At the 1991 Convention I can remember helping Bill unload his car which was packed completely full and included two big boxes full of corkscrews. When he finally opened his room five very serious collectors were like little kids going through what Bill had brought for sale. He really had a great eye for the unusual opener or corkscrew.

If he could be in Buffalo, we wouldn't care if he came empty handed.....we would just love to have him present. He will be in spirit.

Members may send memorials to Bill's wife, Elvie at

Elvie McKenzie
6360 S Jellison St
Littleton, CO 80123

She will send any contributions to the Colorado Volleyball Association in honor of Bill. Elvie, their son and daughter are all excellent volleyball players (Bill was also an excellent volleyball player, in fact he met Elvie, when he was coaching the Philippine National Volleyball team).

Just visualize Tom Zruno, Bob Nugent, Bob Van Vactor, John Horn and Bill McKenzie all together. Wonder what they'd talk about?

Blue/Grey Show at Fredericksburg, VA (February 14th-16th)

The first big show of the year always has the heart pumping. I drove 3 and 1/2 hours straight from Durham to Fredericksburg and arrived at 4:15. Several rooms were open when I arrived and right off the bat I ran into JFO member Larry Moter. He was unloading his car and setting up his room. Larry had agreed to let me stay at his house that night as he only lives 15 miles away. A quick tour of open rooms yielded a few openers and one came from JFO member Dick Kopp. He told me that down the hall a can collector named Tommy Lee had bought an opener collection and had a lot of openers for sale. Dick also told me that Tommy Lee had acquired an A-59 in the collection but sold it to a Rhode Island collector. In fact Dick said he had sent the opener in the mail between two pieces of cardboard. It had been two weeks and the Rhode Island collector had not received the opener (remember to really seal those packages when sending openers in the mail).

Down the hall I found Tommy Lee's room and ended up buying 12 openers (later I find out that Mark Barren, this year's convention host, had first shot and got a lot of good New York openers). The 12 include a L-1-5 Pabst, O-5 Jax, C-17 New Foundland and an E-8-UL Hauck. Larry went into the room later and got a handful of pretty good openers out of a box that Tommy Lee did not mention to me. In any event I'm happy and things get better as Ken Ostrow opens his room up. Ken is now a JFO member and always has a great selection of breweriana for sale. I ended up buying a C-1-UL Eichler's, a P-17-Gerke and a Clough 2-Finger wire opener (unfortunately no A-47 Krug this year). After helping Larry unload, we made a tour of the inside and outside but only a few miscellaneous openers turn up. One thing that did turn up was the proud owner of the A-47 purchased the previous year, Fil Graff. Fil is busy getting ready to takeover the NABA magazine, "The Breweriana Collector" (the premier breweriana publication).

After supper I was checking rooms out and in one room heard a familiar phone voice. We have spoken over the phone many times but had never met in person. This year's convention host, Mark Barren, was in attendance and we finally met. About 10:00 Larry and I headed to his house which was built in 1846 and being guarded by his large dog named Pete. We got down to some serious trading. It took about an hour and Larry ended up with some nice E's including an E-6-Schultz, two different E-6-Rock Islands, an E-7 Sweetwater and an E-9 Paducah. I received 3 G-5s I wanted, all of which Larry had listed this year and a B-13-New Braunfels (another one he had listed). By midnight I was in bed and was up at six the next morning. I spent about an hour going over Larry's "E" collection. A lot of tough openers from tough breweries.

We were back at the hotel by 8:30 and not much happened before 10:00 Another JFO member Lou Sutton showed up. Lou collects a lot of things including Virginia openers and corkscrews. He brought some nice openers for the next JFO auction and we spent most of the afternoon checking out rooms. I spent some time with Mark Barren going over convention details and during this time Larry turned up a nice B-17-8 Walter. I had to give up another good "E" but ended up with it. Not much else turned up and by 4:00 Lou headed back home to Richmond. I checked into my room and made a couple of more laps that evening. By 9:30 I was in bed.

Saturday's table setup for the show begins early. It is mostly a beer can show but some openers do turn up. I bought a A-39-UL Old Export Beer from a Virginia collector for \$18. One other purchase for \$75 yielded a P-102-Indianapolis in good shape.

Blue/Grey Show at Fredericksburg, VA (February 14th-16th) (Continued)
--

By 10:30 I was ready to head home. The current NABA president, Jim Shoulter, did rejoin JFO for the purpose of attending this year's convention. By 2:30 I was back in Durham and another successful show was over.

Anita Gold of Chicago Tribune Advertises Corkscrew Book
--

Anita Gold of the Chicago Tribune ran the following question and answer in her fall antiques column.

Q: I've taken an interest in collecting unusual corkscrews as well as patented examples. How can I find out more about them.

A: An absolutely fascinating book is "Corkscrews" by Fred O'Leary (Schiffer). It is available in a huge 340-page hard cover edition for \$84.95 postpaid from Fred O'Leary (see last page of this newsletter). The book also contains information and advice on corkscrew values.

JFO Editor's Note: Fred's book is a must have for any corkscrew collector. It is a tremendous reference guide for United States made corkscrews.

If Newsletter Is Not Received By The Following Dates Please Contact Your Editor
--

January Issue	April Issue	July Issue	October Issue
January 31st	April 30th	July 31st	October 31st

Article Deadlines (Also Auction Material) For Each Newsletter
--

January ("New Additions") Issue, Deadline is December 1st
 April ("Membership Roster"), Deadline Issue is March 1st
 July ("Convention") Issue, Deadline is June 1st
 October ("New Discoveries") Issue, Deadline is September 1st

Auction Notices

The January JFO Auction brought the highest result yet for a single opener, \$132 for the A-14-1 Rainier Bridge. Please note the M-3-Moxie brought \$36.30 not \$76.30. Thanks to all 52 bidders for making this the most successful JFO auction so far.

Please note in the auction section that Tony Zanghi is having a mini-auction of 3 openers.

Brad Vifquain has started back up his auction service as "Nationwide Ad Auctions". He is planning on having 4 beer auctions and 4 general advertising auctions each year. His next beer auction is supposed to have 100 "A" and "B" types for sale. Cost of each catalog is \$13.00.

Nationwide Ad Auctions
 PO Box 30244
 Mesa, AZ 85275 (602) 807-3609

"Opener Trivia"

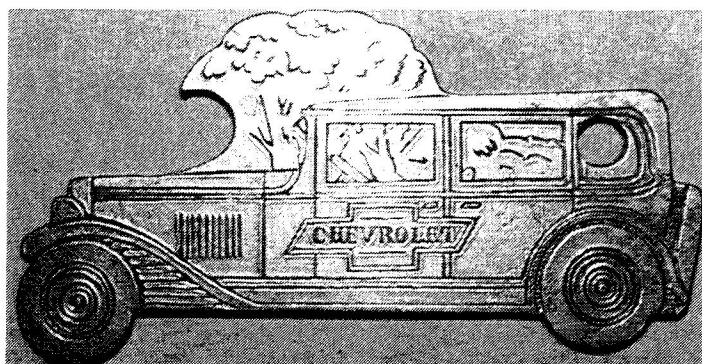
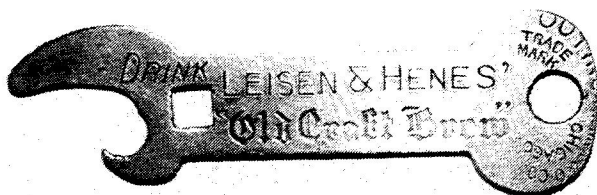
From the last issue, Art Santen thinks the half moon cutout on the P-66 corkscrew knife was used as a place for the finger to lift the blade and not as a cigar cutter as I suggested. Only Dale Deckert said he had the "Vaughan Universal". Art Santen was the only member who said he had the 1933 Chicago World's Fair opener. There was no response on Sandra Emme's E-11 soda opener marked "A.B.C.B. Washington 6, D.C. / Bottled Soft Drinks Good and Good For You", though I turned up the same opener and mine reads "A.B.C.B.". There was also no response on Ollie Hibbeler's P-8 marked "Henry Schaefer El Reno, Oklahoma" or Vic Keown's A-4 marked "Hagan & Rundle Nauvoo, ILL.". On Vic's B-21 marked "Compliments of C.E. Meyers and W.T. Moreland / Distributors of Bone Dry 210 So Greenwood St. Tulsa, Okla.", I would agree that Bone Dry is a soda put out by the Lexington Brewing Co. (KY) during Prohibition.

I did receive an excellent response from Tony Kost on Jim Osborn's E-4, "Peacock Ale. Co. Chicago / "Four Hundred Club" The Aristocrat of Beverages". Tony found a listing in the 1939 Chicago telephone directory. They are listed as an authorized distributor for Drewrys Ale & Lager Beer with an address of 3240 W. Jackson Bl. We don't list openers with distributor names only but in this case the opener list a brand "Four Hundred Club" so I will leave the listing in the handbook even though I am not sure if "Four Hundred Club" is beer or non-beer. Thanks for your help Tony.

Now for trivia questions for this issue:

Larry Sherk has the following B-14 "White Horse Beer Ale & Stout". He says Reinhardt's in Toronto has a White Horse Ale, but no Beer or Stout. Does anyone know if this opener is really American?

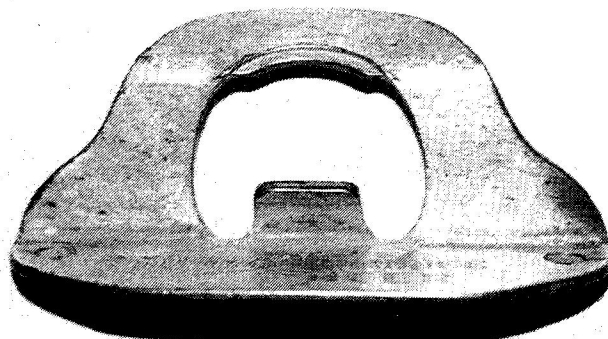
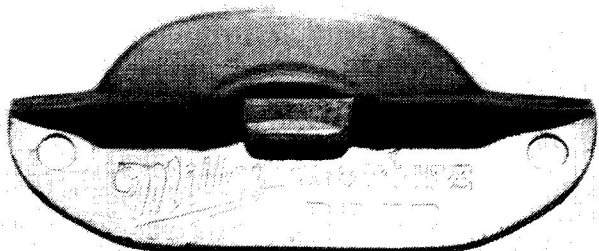
At last year's convention Verne Vollrath showed me the following B-22-12. He wondered if it should not be a new discovery. Unlike most other B-22s the key ring hole end is much larger. After some thought I decided to leave it as a B-22. There is a difference but not enough to warrant a new category.



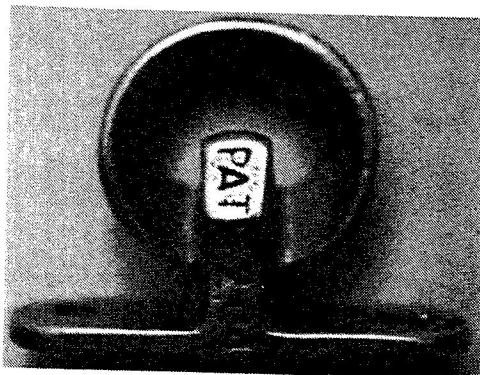
Beside the B-22 is an unusual car figural. I know of 3 JFO members who have the opener. It has not been discovered with beer advertising but is certainly a very unusual "A" style. All 3 have the same front with two having the same ad for a car dealership and the last one having a blank back.

"Opener Trivia" (continued)

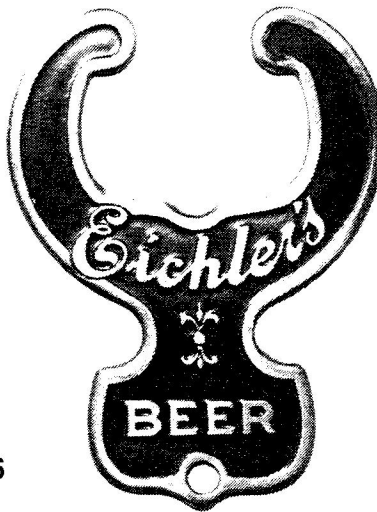
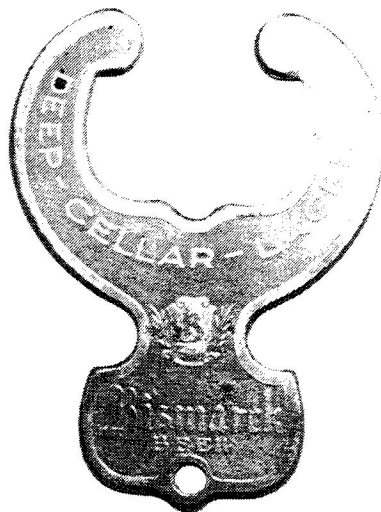
Below is an O-1-4 Miller. The handbook picture does not do the opener justice. Even though 5 different beer advertisements are listed this type is very difficult to come by. I owned the opener shown until Bob Stahly talked me out of it. Several serious wall mount collectors do not have this type in their collection. An opener made by Vaughan in the 30s and apparently in very short supply.



The O-12-1 Pabst is another very tough wall mount to come by. I gave 3 nice "A" types for this one and only know of a couple of others. Once again the handbook picture is enlarged. The opener is only 2 inches wide and the underneath side has "PAT,8,2,04". Probably the earliest known patent for a wall mount opener.

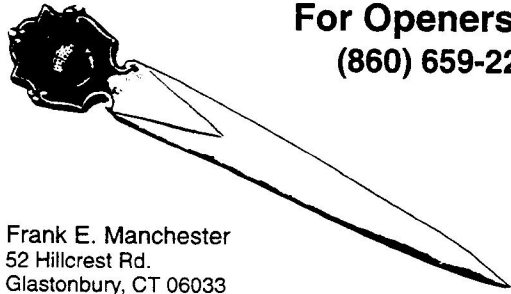


From the Blue-Grey show I bought the 2 C-1s shown below. I had not seen the C-1-6 Bismarck before. It was fairly rusty so I decided to go ahead and clean it with acid. This of course stripped off the remaining 30% paint but I believe worth the final result. The C-1-UL shown on the right came from Ken Ostrow and is one of the few C-1s that is brass (the other being a C-1-4 Scheidt). Most of the C-1s are steel. This C-1 is in really nice shape and the price was \$60 but well worth it to me for such a nice opener.



"Opener Trivia" (continued)

Below is shown an N-40-30 Lone Star with the opener cut into the center. Most N-40s have the opener as part of the buckle hook on the back of the buckle. An N-40-29 Budweiser is made this way and I believe the N-40-21 Blitz Weinhard. Once again a variation from the standard type but I will leave these listed with the other N-40s.

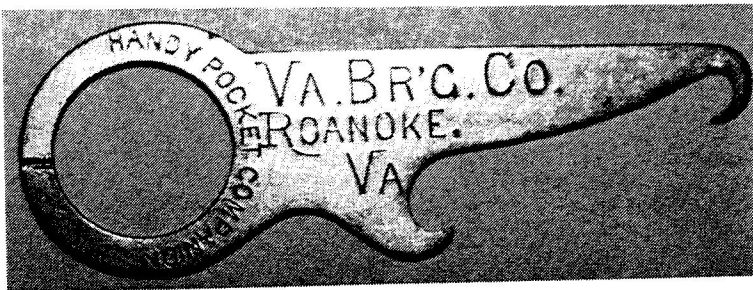


For Openers
(860) 659-2238

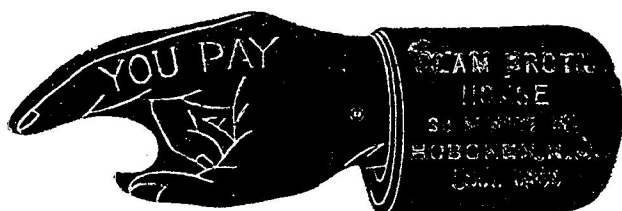
Frank E. Manchester
52 Hillcrest Rd.
Glastonbury, CT 06033



The following 2 openers are from the collection of Lou Sutton. The B-7-26 VA is a tough type to find with beer advertising and is one of only two B-7s with advertising on both sides of the opener. The back side of this B-7 has "Key To Pilsener Export". The C-13 will be listed in the soda handbook and I thought was a very unusual ad for a soda opener from the 30s. The opener has advertising on the other side for "The Sun Rise Flavor Co. Tazewell Virginia". I certainly do not know of any other drinks "dedicated to the American woman".

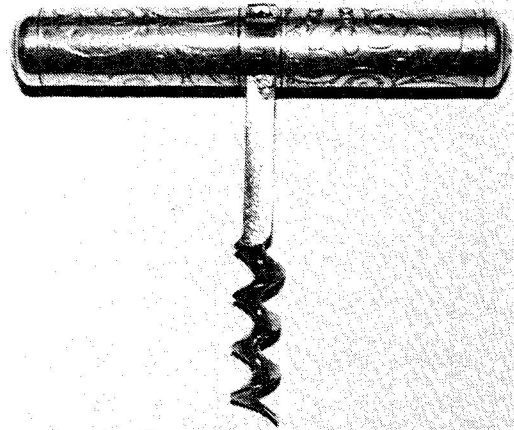
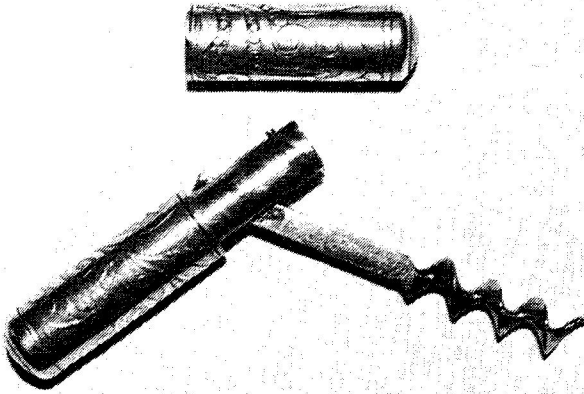


The A-21 shown is non-beer but somewhat beer related. I am showing it because of the unusual ad on it, "CLAM BROTH HOUSE 38 NEWARK ST. HOBOKEN, N.J. EST. 1900 / WE STOOD THE TEST OF TIME RAIDED MORE THAN 100 TIMES STILL DOING BUSINESS 1934". A neat post prohibition peace attesting to their perseverance.



"Opener Trivia" (continued)

Finally a "Fairchild 1888 Patent" corkscrew. It is Sterling roundlet type that is 2 inches long. The patent is for the way the corkscrew shaft sticks through the roundlet and locks into place when the case parts are screwed together. And of course it means that Don Bull and I completed another trade. This time I received the following for the Fairchild. An A-15-16 Fortune, B-14-35 Monroe, C-31-1 Gold Bond, C-36-1 Fort Pitt, D-3-20 Miller, D-12-5 S B & M, N-8-1 Shuster, N-20-2 Grossvater and a R-9-1 Rheingold. We figured about \$350 trade value each way. Don still has a lot of nice openers to trade.



Ollie Hibbeler writes that on a year end trip to the Gulf Coast he did a lot of looking and did not turn much up. One dealer asked \$225.00 for the Wilton "Mr Dry". She was explaining to him the significance of the opener and to get her to shut up he asked if she wanted the 3 he had for \$125.00 apiece. She finally shut up.

Murray Atkinson was at a Orlando, FL flea market over the winter and heard a lady tell several friends the following. "There's a guy in Orlando who has 80,000 bottle openers-more than anyone in the world. Now he's bought a company and he's going to reproduce all the old openers". Murray said he couldn't help but grin. Of course the lady is talking about JFO member Dale Deckert. I had a short visit with Dale last month and he officially counted all of his openers and has between 25,000 and 26,000 openers and corkscrews. I believe Art Santen by now has this many openers and corkscrews. Dale is making 46 of the old cast iron openers in aluminum and is having a local company make these up. See the January JFO issue about Dale's new openers. It is amazing how rumors spread.

Next year's convention host, John Cartwright, sure hit it lucky at a local antique shop last month. At one time he bought the following openers. An A-1 Quako, A-4 Neerit, A-4 Sequoia, A-9 Fan Taz, A-9-24 Richter, A-12-11 Eastside, A-14-1 Rainier, A-15-7 Excelsior, A-15-23 Moehn, A-15-15 South Bend, A-15 Berkshire, A-15 Zee-Mo, A-15-41 Old Style, A-16 Aldworth, A-17-14 Capital City, A-17-11 Cream City, A-17 Lenz, A-29 Nehi, B-2-27 Spokane, E-9-UL Valley Brew, G-5-30 Blue and Gold and a N-70-1 Edelweiss. A nice mini collection in itself, much less believing someone could make this haul in one antique shop. Due to the possibility of more openers showing up at this shop, John is not giving out the location (unless you offer him the ranch).

The following 2 pages contain the results of Todd Milano's "I-7" study. If you have anything to add please contact him (Todd is the father of JFO member Hale Milano). For members who don't know Todd is an avid collector of "I-7"s and started a pay-any-cost search for elusive I-7s. So if you have any tough ones (check his chart) bring them to Buffalo.

The I-007 Task Force

Back in February of 1995 the idea was born to form a subset of JFO for those interested in the I-7. Initial invitations went out to six members and over the years a few more have been invited. Our motto, creatively swiped from Hallmark greeting cards, pretty much says it all. We are simply "A tiny subdivision of JFO formed to improve I-7 collections across the world."

Through the sharing of inventories and information The I-007 Task Force submitted information to our editor. We are pleased to accept his ruling as published in Issue #73 that thirteen I-7's be deleted. Special thanks to Art Santen, Verne Vollrath, and all others who directly, or indirectly, have supplied information on the I-7.

Please dig out your I-7 inventory and compare it to the table that follows. Members of the task force are known for providing quality traders or ridiculous sums of money just to add an I-7 to their collection. Bring those extra's to Buffalo, or better yet drop us a note. If you are interested in joining the Task Force write Hale "Todd" Milano. Active members are: William "Tom" Gormally, Ben Hoffman, Hale "Todd" Milano, Scott Miller, Harold Queen, and Tony Ricicki. Honorary members include Bill McKenzie and John Stanley.

SHADED = have opener U = have opener but want Upgrade T = have opener and a Trader

W G	B H	H M	S M	H Q	T R	I-07-	INSCRIPTION
		U				43	for opening Acme Beer and Ale
T						02	for opening Acme Beer Keglet
		U		T		77	Acme Breweries San Francisco Acme Beer and Ale
	T					01	Acme Brewing Co. Los Angeles Acme Beer and Ale
	T					03	American Brewing Co. Rochester, NY Tam o'Shanter Ale
	T	T	T			04	Anheuser Busch Budweiser King of Canned Beer
						45	Anheuser Busch-Dry Malt
						05	Atlas Prager Beer
						82	Drink Good Old Balboa Beer
	T	T		T	T	06	Ballantine's Ales Beer (3 rings)
	T			T		07	handy way to order Ballantine's Ale-Beer (hand & 3 rings)
						46	Berghoff Beer
T	T				T	08	Best Brewing Co. Hapsburg Beer Quality Lager
		U				09	For Opening Brown Derby Beer Cans or Bottles
						48	Budweiser King of Canned Beer
	T					10	Coors Beer Golden, Colo.
	T			T		11	Croft Ale
		U				63	Diamond State 100% Pure Grain Beer
		U				49	Peter Doelger
U					U	12	Drewrys Canada's Pride Since 1877
		U				64	Edel Brau Beer and Ale
T				T	T	13	Esslinger's Beer and Ale (waiter)
		U		U		50	Falls City Brewing Co. Inc. Louisville, KY Falls City Beer
T	T	T				14	Feigenspan P.O.N. Beer & Ale
	T	T		T	T	15	Fort Pitt Brewing Co. Pittsburgh, PA
						16	Fox Deluxe Beer
		U				79	Frederick Bros. 818 W. 37th Pl. Phone Blvd 2537

W G	B H	H M	S M	H Q	T R	I-07-	INSCRIPTION
	T			T		17	Genesee Beer and 12 Horse Ale Genesee Brewing Co Inc
T						52	Hamm's Beer smooth & mellow
						21	Peter Hand Brewery Co. Meister Brau "The Beer"
						65	Harvard Brewing Co. Lowell Mass
U		U				53	for opening Hull's Ale and Lager New Haven, Conn.
				T		66	Iron City Beer
T						23	Kings Brewery Inc. Brooklyn, N.Y. Kings Beer and Ale
T	T			T	T	24	enjoy Krueger's on draught. where not available, drink it from
		U				67	Liebmann Breweries Inc. Rheingold Beer and Ale
	T			T	T	25	Liebmann Breweries Rheingold Beer Scotch Ale
		U				78	Malt-Diastase Co. OP Spray Dried Malt
						54	Manhattan Premium a finer beer
						68	Manhattan Premium Beer Chicago
U	T				T	26	Miller Select Beer
	T			T	T	27	The Famous Old Narragansett banquet Ale
						28	Drink the famous New England Ale in double-lined cans
				T		70	Tru-Blu Beer and Ale Northampton Brewing Corp.
T	T			T	T	29A	Tru-Blu Beer and Ale Northampton Brewery Corp.
				T		29B	(same as 29A but patent # on reverse)
						30	for opening Nu-Globe Beer
		U				55	Old Dutch Beer-Ale Brooklyn, N.Y.
T						31	Pabst Blue Ribbon / same
	T	T				32A	for opening Pabst Tap a Can (single script Pabst)
						32B	(same as 32A but "Pabst" is double script)
	T	T			T	33	for opening Pabst Tap a Can made in United States of America
					U	34	Pilsner's Original Extra Dry Beer N.Y.
						56	R & H Beer taste the difference
						57	Regal Pale the most refreshing thing on ice
T				T	T	36A	Jacob Ruppert Brewery New York
						36B	(same as 36A but text is printed on back side)
		U				58	for opening St. Claire Beer America's finest
						37	Schaefer America's oldest lager beer
	T			T		59	Schaefer-Beer at its' best
						71	Schaefer-Beer at its' best / same
					T	38	for opening Schmidt's City Club Beer
		U				39	Schultz Quality Beer-Ale
						60	Storz Beer Omaha
				T		40	Stroudsburg Brewing Co. Stroudsburg, PA Stroud-Beer
				T		72	Trommer's Beer
						81	Union Cream Ale
	T					41	Waldorf Lager Champagne of Beer
						83	Roger Williams Ale

<p style="text-align: center;">ANHEUSER-BUSCH POCKETKNIVES (by Barry Collinsworth) Beautiful knives that opened bottles & merchandised an image</p>

(The following article appeared in the December 1995 "National Knife Magazine").

Calling cards can be so boring. Most people throw them away.

Lots of business people may realize this, but brewing empire builder Adolphus Busch actually came up with a better idea - providing both a testament to his merchandising savvy and a legacy of fine pocketknives for today's collectors.

When Adolphus Busch married Lilly Anheuser and went to work for his father-in-law's brewery as a salesman, few people suspected that he would create a brewing empire. But it wasn't long before the German immigrant became the driving force that transformed a floundering local brewery into an industry giant, and today he is considered the founder of the company.

The St. Louis brewer displayed real talent for the technology side of the business, but he was equally ingenious in merchandising his beers. Robust and gregarious, he was a showman who knew the value of advertising and making a good impression on the public. His brewery became a showplace; only the finest horses were used to draw the shiny red-and-green beer delivery wagons through city streets.

And for a calling card, Busch often bestowed pocketknives; a look through a Stanhope lens, (a tiny peephole in the handle), revealed the image of Adolphus himself, in the unlikely event the recipient forgot who gave him the knife.

While numerous giveaways were distributed by Anheuser-Busch, including cork pulls, hat clips, match safes, watch fobs, and tokens . . . by far the most popular Anheuser-Busch giveaway was the Adolphus Busch pocketknife. First used in the late 1870's, at a time when few men would be without some form of knife on their person, the pocketknife was reissued in at least 70 varieties through the years. Busch used them for decades as giveaways in his extensive world travels, until his death in 1913. With the advent of Prohibition late in the century's second decade, use of the pocketknives was discontinued, but soon after Prohibition was repealed in 1933, grandson and third-generation company president Adolphus Busch III, had similar knives made. Anheuser-Busch knives were produced until about 1967.

The earliest editions of the knife were generally bone or pearl handled. Later editions were German silver or gilt brass - usually quite ornate and often enameled for a cloisonné-like effect in striking color combinations - red and green, blue and red, solid red with gold barley design, and red and black. The knives were well made and expensive.

In addition to their personal use by the company's founder, Anheuser-Busch knives were issued by other company representatives and as promotional souvenirs at major events such as the St. Louis World's Fair in 1904 or the Chicago Columbian Exposition in 1893. The knives were often provided to saloon owners and customers by Anheuser-Busch branch managers. In later years, some employees received them as production or sales incentive awards.

The knife was extremely utilitarian, especially in the era when almost all bottled beer was corked. The corks were held in place by a wire bail, over which a layer of tinfoil was sealed. The thirsty consumer or bartender would use either the small or large blade to peel off the tinfoil, then work the hooked, often serrated blade under the bail and snap it so it could be removed. At that point, the corkscrew, or cork pull, could be screwed into the cork and the cork pulled, giving the beer drinker access to liquid refreshment.

The knife was appropriately adorned with the company's A and Eagle trademark and the name of Anheuser-Busch. The earlier editions of the knife had the serrated blade angled just right so a gentleman could cut off the end of his cigar rather than having to bite it off

ANHEUSER-BUSCH POCKETKNIVES (by Barry Collinsworth) (continued) Beautiful knives that opened bottles & merchandised an image

(no doubt causing more than one wife to observe that a pocketknife could function for not just one, but TWO vices).

Tens of thousands of the Anheuser-Busch pocketknives were issued over the years, but they seem to have dwindled to a precious few, as they are rare today, bringing high prices in the antique cutlery market and from collectors of breweriana. Market values range from about \$50 to \$400, depending upon style, edition, and physical condition. Most tend to sell for about \$200 to \$300.

Anheuser-Busch pocketknives are usually of the champagne pattern - defined in the hobby as a mullet-blade pattern in which one of the blades is a corkscrew, usually on the back. Older knives, made before about 1925, usually have the curved champagne wire cutter blade, while later versions offer a cap lifter blade, reflecting the development of bottling technology. It is not unusual to see a cigar cutter blade incorporated into the champagne pattern. It's important to distinguish between the champagne pattern, (a multi-blade folder with corkscrew) and a champagne knife, which is usually a fixed blade knife with a single wire cutter blade, often part of a carving set.

The peephole, or Stanhope lens, seen in most Anheuser-Busch pocketknives, and other types of knives as well, is a miniature polished glass rod named after its inventor, Lord Charles Stanhope, third Earl Stanhope of England. The Anheuser-Busch "Stanhopes" are perhaps the most exquisite examples to be found with these lenses, and are also considered among the best specimens in the broader category of advertising knives, which is enjoying a keen and growing interest. Most examples contain views of one of several portraits of Mr. Busch. More rare are those that contain pictures of the brewery, or of the St. Louis Fair. Several editions of the knife had more than one Stanhope viewer, showing both Busch and the factory, for example. Stanhopes produced by other companies of the day commemorated everything from landmarks to tourist attractions, to celebrities like kings and queens, to risqué pictures of men and women in various stages of undress (sometimes called "loud" photos in the trade).

Several cutleries produced Anheuser-Busch pocketknives. Most of them were ordered from A. Kastor & Bros. of New York - for many years the largest American cutlery importer and wholesaler, and later a manufacturer. The importer commissioned the knives to be made by Solingen, Germany, craftsmen through its Germania Cutlery Works, run during most of those years by Adolph Kastor's brother Nathan.

Unlike some cheaply made imports of the late 19th and early 20th centuries, some of the highest quality advertising knives came from various Solingen cutlery works of pre-World War I Germany. Usually, the cutlery companies operated as factors, ordering components from specialized craftsmen who operated from their homes - some would forge blades in home workshops, others would grind and polish blades, or make springs or handles, with only final inspection and packaging done by the cutlery factor. While numerous U.S. firms - competing brewers, Coca Cola, and others - commissioned these champagne knives as advertising items, Anheuser-Busch knives seem to attract the most attention.

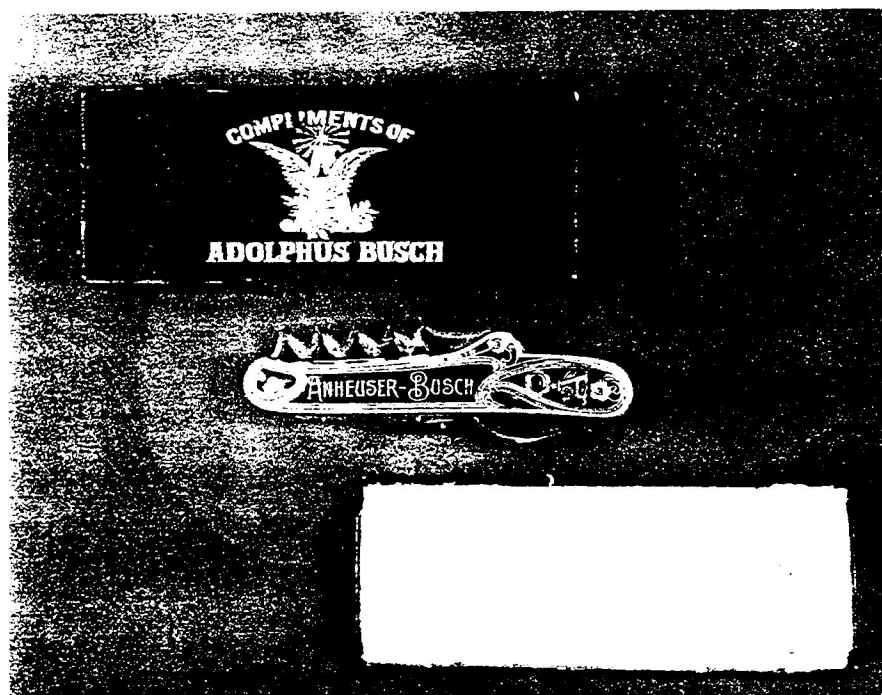
Later Anheuser-Busch knives were made by Camillus Cutlery Company, which the Kastor firm purchased in 1902 in order to have a source of tariff-free American-made knives. The Kastor brands were last used in the 1940's. Camillus Cutlery Co. is now the firm's name, and it is strictly a manufacturer. The company is the leading U.S. contract maker of private brand and limited edition collector knives, the most popular being the re-issue Remingtons.

ANHEUSER-BUSCH POCKETKNIVES (by Barry Collinsworth) (continued)
Beautiful knives that opened bottles & merchandised an image

In addition to Kastor Bros. and Camillus, Anheuser-Busch also purchased knives from Schrade Cutlery Company of Walden, NY, and several other now-defunct cutlery importers and manufacturers such as Wester Bros., New York; Wester & Butz, Solingen; and Wiebusch and Hilger, NY, which had factories in several countries.

Tangs are sometimes unmarked. Tang stampings that do exist include Kastor, Anheuser-Busch/Germany, and Wiebusch and Hilger, N.Y.

Adolphus Busch's factory pocketknives functioned in a number of different ways - they were beautiful knives, with fit and finish of the highest quality that could cut, lift, and pull, but they could also communicate. They were premium pocketknives that for many years served to create an image and build awareness of a premium product. It was a message delivered quite effectively from thousands of pockets every day.



Anheuser-Busch pocketknives were well made and expensive - premium champagne pattern pocketknives that could cut, lift, pull, and build awareness of the company and its product.

New E-Mail Addresses

The following JFO members sent in their E-Mail addresses.

Herb White	WIKIEUP@JUNO.COM	(Change)
Joe Young	JOEYOUNG1@JUNO.COM	(Old Address is Still Valid)
Tony Zanghi	ATZ0@MS1.ALLENCOLE.EDU	

Zymurgy Spring 1997 "Salute To The Bottle Opener" by Greg Kitsock

Following 3 and 1/3 pages is an article that appeared in Zymurgy (a home brewer's magazine).

Caps Off

A Salute to the Bottle Opener



A ccording to legend, the Greek philosopher Archimedes once boasted, "Give me a lever long enough and I'll move the world!" Two to three inches, however, is more than a sufficient length for popping the cap off any beer bottle on the planet.

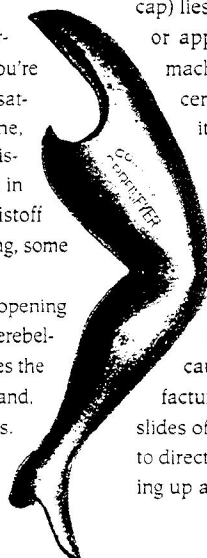
Opening a bottle is, to rephrase Thomas Edison's famous maxim, 99 percent anticipation and 1 percent perspiration. Most of the effort is expended in realizing that you're thirsty and then deciding which homebrew would best satisfy your craving. If you're a regular reader of this magazine, chances are you've got several openers in easy reaching distance of the fridge, and one or two on a key chain, just in case you find yourself on a desert isle with only nontwistoff bottles to drink. (Heck, in this age of rampant body piercing, some may have openers surgically implanted.)

After you've done it a few thousand times, the act of opening a bottle becomes almost a reflex programmed into your cerebellum. You don't stop to think that this simple action involves the coordinated motion of 27 distinct bones in your wrist and hand, as well as an even greater number of muscles and tendons.

Nor do you consider the scientific theory behind the opener. Like a seesaw, wheelbarrow, broom or baseball

bat, a bottle opener belongs to a class of simple machines called levers. A lever, at its most basic, is a bar free to move around a fixed point called a fulcrum. More specifically, an opener is a class 2 lever because the load or object to be lifted (the rim of the crown cap) lies between the fulcrum (the top of the bottle) and the effort or applied force (in this case, your hand). Like all simple machines, the opener serves to redirect and multiply force. It's certainly easier to lift off a cap with an opener than to wrest it off with your bare hand, or — God forbid — gnaw it off with your teeth.

If you're shaking with anticipation at the thought of that chocolate cheesecake stout, there may be several misfires before you hear the reassuring pssssscchhht! and see the wisp of white vapor rising up from the bottleneck. "Usually, if you try to open a bottle in one grand movement, you mess something up," cautions C. Mead Bates, president of CYMBA Inc. (a manufacturer of openers based in Darien, Conn.). "Often, the opener slides off because you were pulling it back toward you. You've got to direct the pressure toward the glass part of the bottle, while lifting up at the same time."

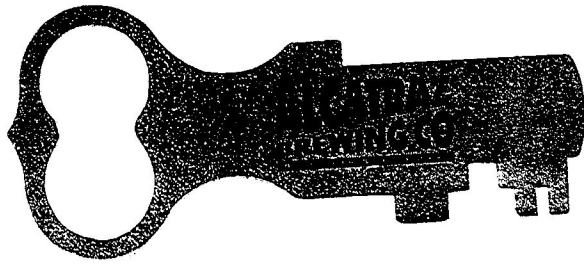


The fish figural opener features a square gas key and dates between 1910 and 1920.

A very rare hand figural opener from the Hand Brewery in Pawtucket, R.I., dates to the same time period.

The cast-iron leg figural from Missouri advertising "C. Breimeyer" dates to the 1930s.

By Greg Kitsock



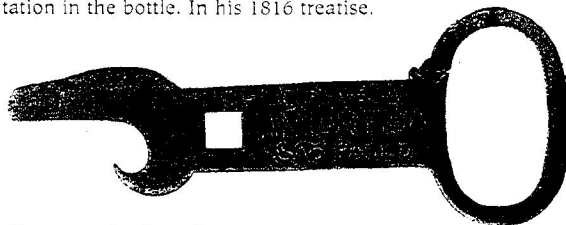
The Alcatraz Brewing Co. key opener is laser cut in the shape of an actual jail key.

Tom Pastorius, owner of the Penn Brewery in Pittsburgh, Pa., advises carefully lifting up one edge to vent some of the CO₂ before popping the cap. That way, you minimize the possibility of a foamover into your lap.

Most fastidious of all are bottle cap collectors. To obtain a pristine specimen, they'll place a nickel or dime on top of the cap to avoid direct contact between the opener and metal surface, then slowly work their way around the edge of the crown.

It's a simple action, repeated millions of times each day, but representing more than 100 years of technological progress.

You can't discuss openers without talking about bottle caps, and you can't divorce bottle caps from the bottle itself. Before the 1890s, almost all beer was draft. There were several reasons. First of all, glass was manufactured and shaped by artisans and was too expensive for widespread use. Other problems were the short shelf life of bottled beer, owing to microbial infection, and the inability to control secondary fermentation in the bottle. In his 1816 treatise,



The Antartica key ring opener features a rare gas wrench.

The American Practical Brewer and Tanner, Joseph Coppinger writes that bottling is frequently rendered "unprofitable by great breaking of bottles arising from the impure state of beer." His solution: filter the beer through charcoal and soak the corks in pure spirit the night before. Pasteurization

would eventually provide a better alternative.

Another hurdle was purely legal in nature. Before 1890, the Internal Revenue Service taxed beer by the keg only. To stay within the law, brewers had to keg beer first so a tax stamp could be affixed and canceled,

then transfer it to bottles — an unnecessarily tedious process. On July 3, 1890, Congress (largely at the behest of Captain Frederick Pabst of the Pabst Brewing Co.) modified the law so that brewers could gauge the beer as it flowed from the aging cellar to the bottling room.

With the bottle's place assured, the search was on for a stopper that would keep CO₂ in and dirt out, and that wouldn't fly off like a rocket during pasteurization. Hundreds of different designs were patented during the late 19th century. Some were attached with bailing wire, much like modern swingtops. Others had to be removed by means of a corkscrew.

Enter: William Painter.

The son of a Quaker farmer from Maryland, Painter displayed an amazing knack for mechanics as an apprentice at his uncle's leather company, and later as foreman of a machine shop. His inventions ranged from a device for detecting counterfeit coins in a fare box to a pump for removing water from ships. But it was the crown cap, which he patented in 1892, that would make him a rich man.

The crown cap was so named because the metal disk, with its indentations around the rim, vaguely resembled the customary headgear of royalty. Unlike previous bottle closures, which were essentially plugs, Painter's invention consisted of a metal cover that could be crimped tightly over the lip of a bottle to form an airtight seal. To prevent the beer from coming in contact with the metal, the inside was lined with cork. Painter's innovation caught on

slowly, as many brewers resisted retooling. Ironically, Pabst, whose lobbying efforts had made bottling commercially feasible on a grand scale, was one of the last major hold-outs. Nevertheless, after Painter's patent expired in 1909, all brewers switched to the crown cap or went out of business, never to reopen, when Prohibition became law.

The crown required a special device to remove it. According to Thomas D. Gibson's article "Capping the Bottle" in the Spring 1996 issue of *Invention & Technology*, Painter's original solution was to

punch two holes in the metal, through which a loop or metal handle could be inserted for grasping and removing the cap. This proved unsatisfactory for two reasons. First, it added a step to the manufacturing process. Second, it raised the risk of perforating the cork and causing leakage.

In 1894, Painter's company, Crown Cork and Seal, was granted patent number 514,200 for what was probably the first modern bottle opener. It consisted of "a suitable handle, provided with a cap-engaging lip adapted to underlie a portion of an applied bottle sealing cap, and also having a centering gage affording gaging contact with the side of the cap adjacent to the engaging lip ..."

The early 20th century was a golden age for bottle openers, both whimsical and utilitarian. Collectors of antique openers have catalogued 57 different figural varieties. One popular design was shaped like a woman's leg, with the instep of her heel forming the cap lifter. Another is shaped like a snapping turtle, with the turtle's jaw being used to



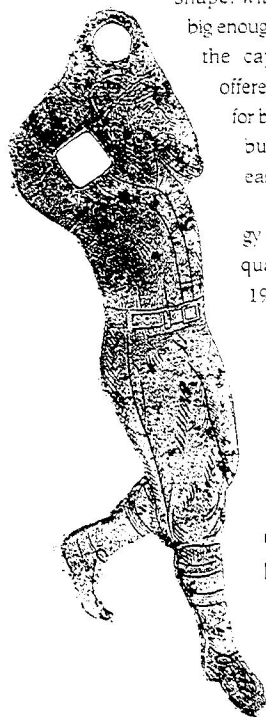
This opener shaped like a woman's leg is a rare find for collectors.

grasp and remove the cap. Openers were also manufactured in the shapes of a fish, a beer truck, a baseball player, a dachshund and a seal. Over the years, some companies would distribute brewery-specific figurals: The Iroquoise Beverage Co. of Buffalo, N.Y., issued an Indian-shaped opener; the Wooden Shoe Brewing Co. of Westminster, Ohio, put out a clog-shaped model; and the Kaier Brewing Co. of Mahanoy City, Pa. (deep in the heart of anthracite country) was responsible for a wall-mounted opener in the shape of a coal miner.

In 1914, one Chicago company patented a figural opener in the shape of a nude woman crouching, patterned after the famous painting "September Morn" by French artist Paul Chavas. This portrait of a peasant girl skinny-dipping in a chilly mountain lake had caused a furor the previous year when the notorious American prude Anthony Comstock spied it in a storefront and tried to have it censored. Perhaps to avoid a similar controversy, the manufacturer issued a G-rated version of the opener with the woman clothed in a bathing suit.

In 1909, Edwin Walker patented the wire opener, which consisted of a metal coil drawn into an oval or semicircular shape, with a diameter just big enough to accommodate the cap. Wire openers offered less surface area for brewery advertising, but were cheap and easy to make.

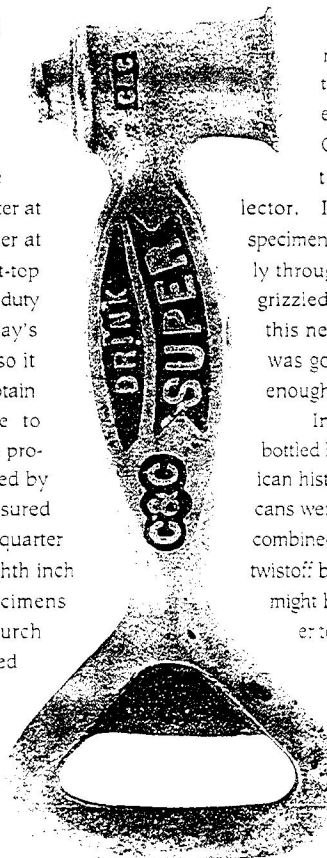
Opener technology underwent another quantum leap in 1935, after the Got-



This baseball player opener was made by Vaughn of Chicago. The design was patented in 1914, featuring a gas key in the hollow of the player's elbow.

tfried Krueger Brewing Co. of Newark, N.J., became the first brewery to market beer in cans. To service all containers, openers were redesigned with a cap lifter at one end and a can piercer at the other. The earliest flat-top cans were made of heavy duty steel as opposed to today's lightweight aluminum, so it took a larger opener to obtain the necessary leverage to punch in the metal. The prototype can piercer, issued by American Can Co., measured 5 1/2 inches long, three-quarter inches wide and one-eighth inch thick. These early specimens were nicknamed "church keys" after the oversized keys that the sextant would carry to open and lock the local house of worship. Bates offers an alternate explanation for the term "church key." Early openers, he argues, had tiny square holes in the handle that could be used to adjust the valves that turned gas lamps on and off inside the churches. Gradually, openers were shortened to about three inches, probably as a result of the rising costs of raw materials and World War II metal shortages.

Dual purpose can and bottle openers were manufactured by the millions. Liquor stores would pass them out free with the purchase of a case of cans. Many pre-1940 cans came printed with instructions and diagrams for using the new openers. Curiously, the illustrations often showed only a single hole punched in the top. It took a little time before the manufacturers and public realized that by punching two holes on opposite sides, you could make the beer pour faster.

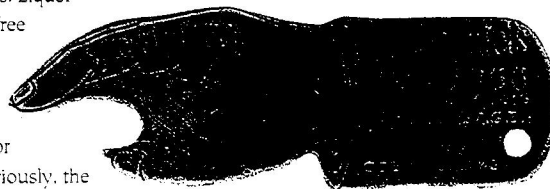


C&C's Super opener is still an enigma to collectors. The heavy hammer head feature indicates the tool was also used to crack ice.

The grasp and punch motion became so reflexive that it was difficult to give up, even after Pittsburgh Brewing Co. introduced the first pull tabs in 1962. As a can collector, I've seen several early specimens with a hole punched directly through the tab, as though some grizzled oldtimer said, to hell with this newfangled technology, what was good enough for dad is good enough for me!

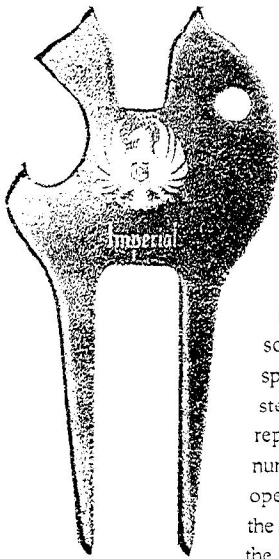
In 1969, canned beer outsold bottled beer for the first time in American history, and virtually all of those cans were self-opening. The pull tab, combined with the introduction of the twistoff bottle cap later in the decade, might have relegated the beer opener to antique shop drawers, if not for the craft-brewing revolution and the concurrent interest in homebrewing. "The market in soft drinks is mostly gone," says Bates.

Granted, most of today's openers are of the cheap, plastic key-chain variety, that are strewn about like confetti at beer festivals and trade shows. However, figural openers are making a comeback. The Jack Daniels Brewery has produced a classic "spinner" opener with one end shaped like a human hand with outstretched index finger. A metal dim-



The spinner design, originally made by Brown and Bigelow in St. Paul, has been adapted by numerous breweries. The spinner serves the dual purpose of opening bottles and pointing out the benefactor of the next round.

FIGURAL PLAYER OPENER COURTESY OF BRIAN REEM; PHOTO BY ROBERT GOLDMAN



This fully functional opener from Imperial Beer doubles as a divot repair tool.

pie in the handle allows the opener to be spun; whomever the finger points to has to buy the next round.

Bates, a collector of antique openers, has created some unique figurative specimens in stamped steel and brass. His repertoire includes numerous bottle-shaped openers, an opener in the shape of a jail key for the Alcatraz Brewing Co. in Indianapolis, a fake cellular phone with an opener embedded in the speak-

er, and a combination opener/divot fixer for golf fanatics.

The only requirements for an opener, notes Bates, are that you have two points in the right juxtaposition, about one-half to three-quarters inch apart, and that you have enough leverage (at least the length of a half dollar). "After that, you can build anything around it that will not get in the way of those points."

References

Anderson, Will. *The Beer Book*. The Pyne Press, 1973.
 Bull, Donald. "Beer Advertising Openers." *Beer Cans Monthly*, June 1982.
 Gibson, Thomas D. "Capping the Bottle." *Invention & Technology*, Spring 1996.
 Kitsock, Greg. "Breweriana." *Beer, the magazine*, July/Aug. 1995.
 Martelis, Jack. *The Beer Can Collector's Bible*. Ballantine Books, 1976.
 Greg Kitsock is the associate editor of *Barley Corn* and a frequent contributor to other publications including *The New Brewer* and *American Brewer*. He has been an avid breweriana collector for the last 20 years.

©1997 Greg Kitsock

365 BOTTLES OF BEER FOR THE YEAR

**3 MONTS
FLANDERS
GOLDEN ALE**

Brewed in Saint-Sylvestre, France

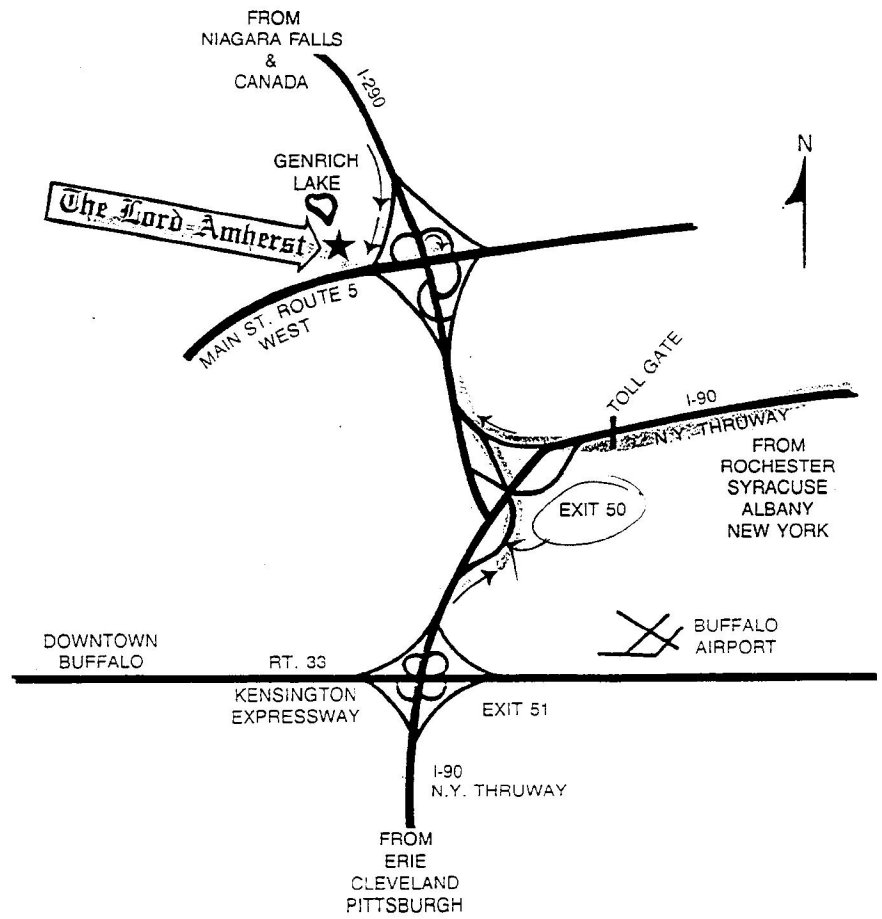
Overwhelmingly yeasty, this ale is full and sharp as it spreads all over your mouth. The alcohol presence increases quickly, and an encompassing, rounded sweetness helps temper spicy foods. It requires a corkscrew to open.

suggests that a Dr. Claver Morris may have purchased the first corkscrew, for three shillings and sixpence. The implement became so fashionable that less than a century later, 90 patents had been registered in Birmingham, the self-styled "Corkscrew Capital of the World."

BEER FACT

A worn English sales receipt dated 1686

THURSDAY
FEBRUARY
1997



January New Members, Renewals, Address Changes & Corrections
--

Just For Openers now has 290 members (New Members: Numbers 816-825)

Member Name, (Spouse)	Street	City, State	Zip	Phone
Membership Number	Areas of Interest	(Sponsor of New Member)		
Abas, Josef, (Susy)	Kibbutz Misgav-Am	Mobile Post Upper Galilee	Israel	12155 (972) 6-6953601
821	All Kinds of Bottle Openers and Corkscrews	(CCCC)		
Alonso, Richard, (Nanette Bergevin)	6705 Grimes Rd	Jordan, NY	13080-9709	(315) 689-7314
818	Syracuse NY Breweriana	(ECBA)		
Bromm, Donald, (Ida)	3240 Hwy 32	Tekamah, NE	68061-5004	(402) 374-1632
398	(Address Change)			
Burruss III, John	318 Lost Oak Dr	Canyon Lake, TX	78133-5720	(210) 899-7241
822	Missouri & Texas Openers	(Harriet Waldo)		
Calhoun, Michael, (Linda)	424 Joliet Rd	Marquette Heights, IL	61554-1426	(309) 382-2378
824	Openers & Corkscrews All Types	(Don Bull)		
Callies, Joel, (Kay)	41265 Peterson Ave	North Branch, MN	55056-6823	(612) 583-2814
720	Minnesota, Wisconsin, & Montana Beer Advertising Openers	(Address Change)		
Desrosiers, Michel	16315 Av Hebert	Saint Hyacinthe, Quebec	CANADA	J2T-3W4 (514) 774-3200
817	Corkscrews	(Jean Grignon)		
Engelbrecht, Ken, (Susan)	22 Rainey Rd	Crawford, TX	76638-3317	(817) 486-2230
823	Advertising, Beer, or All Old Unusual or Unique Openers(Don Bull)			
Mahood, Jeff	303 W Elmwood Ave	Mechanicsburg, PA	17055-4126	(717) 766-8055
816	All Types of Openers (Including Beer & Soda Advertising)			(Hale Milano)
Matney, Kent, (Sue)	PO Box 287	New Paris, IN	46553-0287	(219) 831-4947
819	Beer Bottle Openers (Cymba-WWW)			
Rivers, David	2755 N Forest Rd Apt G	Getzville, NY	14068-1502	(716) 636-0899
781	Syracuse New York Openers & Breweriana Only			(Address Change)
Shoulter, Jim	9 Shawnee Woods Rd	Wheeling, WV	26003-1746	
499	Glasses-Mugs-Steins-Signs-Trays (Rejoin-Norm Jay)			
Weatherhead, John, (Illona)	5224 S Guerin Pass	New Berlin, WI	53151-8139	(414) 425-8810
820	Wooden Bottle Shaped Openers (L-4s) (Norm Jay)			

New Opener Products

Jack Westall informed me that the Pittsburgh Brewing Co. has several "Q" type openers for sale. You can call them for an order form at (412) 692-1114 or write at

The Brewery Store
Pittsburgh Brewing Company
3340 Liberty Avenue
Pittsburgh, PA 15201

Spouse's Corner

by Pat Stanley, the Editor's Spouse

John is pressuring me to get this corner done. I've been busy, Corkie just turned one! Buffalo is less than a month away.....When we get together we will have plenty to say!

I can't find the newsletter that tells who I am to feature next. John is asleep, so I selected the following text!

Two years ago Marge Stahly sent her story about the very lovable Bob Stahly. Each quarter I've read her contribution and enjoy it more and more each time. Thanks for a wonderful addition to the Spouse's Corner.

Marge doesn't know how to explain that Bob collects openers. It's as difficult as explaining why the sky is blue rather than purple. She can't explain his passion for openers, or any of the other items he collects. But she does know who to blame....his mother. She was ill and they had to close her home. As fate would have it, a radio commentator announced at that very time that the next hot collectible would be bottle openers, since tab tops were becoming the norm (not you Norm Jay). Well, lo and behold, Bob's mother had a box full of openers and Bob claimed them for himself. Smart Move???

Bob had a match book collection in grade school (quite some time ago). He gave that to his nephew. (Does he still collect?). Anyways during one of those deep JFO discussions, Joe Young said "collecting is innate". He's seen a lot of babies born, so I'm sure he's right. Marge went on to say something so descriptive that we can all see it as clear as day:

When collectors are born, their fists are very tightly clutching the umbilical cord, and when they are pried loose, they have a sense of loss, which can only be satisfied by collecting.

Wouldn't it be easier if modern medicine could just create a new cord for these collectors?

Marge did collect bells, but had to give it up for lack of space (Bob took the entire basement, which is reasonable since he "hand" dug it). Next was postcards and some Porcelain Stoppers. She's not hooked but does enjoy her postcards.

It sounds like Marge knows more than most spouses about his collection and he is good at picking up postcards she doesn't have yet.

Shortly after Buffalo they will celebrate their 38th anniversary. I told you he is lovable! At first they went to every flea market and antique show together, but the past few years he will sometimes go alone. Honeymoon is over!

Marge thinks psychologists would love to study a group such as ours (notice she indicated that the spouses are part of this wonderful club). Perhaps they could start with the letters in Spouse's Corner.

Spouse's Corner (Continued)

Marge has been trying to figure it out for some years herself, coming up with obsessive-compulsive, boredom, the need to own, but she really thinks it's the thrill of the hunt. Think about it, she says. You get up, dress, and motor to some god-forsaken field at dawn, in the rain. The adrenaline is pumping and you have one thing in mind, to find a new discovery or a hard one everyone will drool over. Perhaps she's right, as I have heard John say that finding the opener is more fun than having the opener.

She is amazed that Bob is so intent, not just in the collecting, but the bookkeeping, cataloging, etc. She doesn't know how he can remember where an antique mall is, or the date they were at certain conventions, when he can't remember her birthday. And what is he saying when he takes pictures of his collections, but not his grandchildren??

In conclusion Marge feels that his collection has been a great experience. They have met some really great people and been to many interesting places.

At my first convention in St. Louis, I remember well that John wanted to catch the Stahly's to go out to eat, as they had been kind enough to invite him out when he use to show up all alone each April. I wouldn't mind going out to eat with them again at the little diner in Streator where we visited them last year hours before the Convention began. John drove really fast back to Chicago to greet everyone's collection (oh, I mean greet the members!).

I believe Herb White's story is the only one that remains. I better bring some questionnaires to Buffalo, or think up a new angle for this corner.

I just had a new idea. John will love this. I am going to start a series called "Opener Lessons 101". We spouses will learn "Everything We've Always Wanted to Know and Were Afraid to Ask". Maybe some of the new collectors will like this too. Like just how does the totally green collector start learning all this in a logical progression. John, take your patience pills. I am going to become knowledgeable about your collection!!!! And I pledge to help all spouses do the same. Of course, that does mean that *you* need to learn about Mary Kay products, so you can handle calls. Isn't his exciting????? It's the least I can do after you named our child after a Corkscrew!!!! (For new members, as in Corkie the Yorkie.)

Price Guides (Its Just An Opinion or Is It?)
--

A price guide has been included with the last three Handbooks (95-97). The prices shown are hopefully a fairly accurate reflection of the market. Of course if I took a vote a lot of members would not agree with all of the prices shown. This price guide is intended to be a guide when buying openers and corkscrews. Besides including the current Handbook Price Guide I am also including an article about a book on cigar cutters. The article appeared in the October 16, 1996 Antique Trader in a "Tobacciana" column by Dr. Tony Hyman. He critiqued the book "Antique Cigar Cutters & Lighters" by Jerry Terranova. JFO member Bill Ennis gave some incitive evaluation of the book.

Tony first notes that Jerry Terranova is a good friend and that Jerry's collection which is pictured in the book is largest and best collection of cutters owned by anyone in the world. It is also interesting to note that Mr. Terranova is interested in selling his collection as an entire lot and that is possibly why his price guide reflect the prices that it does. Besides many overly priced cutters he presents some incorrect historical information. Bill Ennis elaborates.

Price Guides (Its Just An Opinion or Is It?) (Continued)
--

Antique Cigar Cutters & Lighters illustrates a marvelous collection of cutters and lighters, and is worth the price (\$69.95) just to see the collection. Unfortunately, (1) the photos are not all of top quality, (2) the text is full of errors (the result of insufficient research), and (3) the prices do not accurately reflect the current market. Referring to page 9, Bill says that much more valuable and accurate information should have been included. Edwin Walker (1847-1917), with two partners, formed Erie Specialty Manufacturing Company in Erie, Pa., (not Buffalo) in 1889. They manufactured corkscrews, lemon squeezers, ice shavers, milkshake machines, cigar cutters and other items. On Feb. 12, 1892, Walker bought out his partners, changed the name to Erie Specialty Co., and took Z.T. Brindley as partner. They acquired the rights to an automatic spring-driven cutter, Patent #398344, invented by Frank Phillippi of Reading, Pa., dated Feb. 19, 1889. By 1906, Walker had been himself issued eight other patents for cigar cutters, before selling all rights to cutters and other tobacco tools to Edward Brunhoff (1863-1936) owner of Brunhoff Mfg. Co., in Cincinnati. Erie Specialty Co., went on to become America's premier maker of corkscrews.

Bill continued his reply with several references of patent date errors. He then states that from a historical perspective, the book is a failure. It leaves the impression that cigar cutters were common in the 1850s, whereas, in reality, teeth and knives were the cutters of choice as the first U.S. cutter patent wasn't issued until 1860, and that for a match safe with a cutter built in. During the entire 1860s, only three other patents were issued for cigar cutters, and only two during the 1870s. Using patent records as a guide, the evidence says it wasn't until the 1880s that cigar cutters became in general use. Eighty-five new patents were issued that decade.

It is with pricing that Bill has his biggest complaint. The prices are ridiculous. The lowest price listed is \$100. Certainly the collection has many rare pieces that deserve high prices, but many prices defy logic or reality. A razor blade type cutter made, sold and given away every year since the 1920's which is "valued" at \$250-\$600. It sells everywhere for \$15 to \$25. The modern trick lock, which is pictured, is worth only \$15, not many hundreds. Several modern cutters all made after WWII and still available for around \$40 (not \$150 on up). Some little old lady antiques dealer is going to take a beating if she relies on this book as a price guide.

A very nice summary by Bill Ennis. I thought his background history of the Erie Specialty Co. would be of interest to members. And yes Bill, my mother got caught in the price trap. She has a booth at an antique mall and when the cigar cutter book first appeared sold a few of the \$150 to \$250 that were worth that much. She was also able to obtain several of the under \$50 cutters and priced those at the book price. They have sat in her booth and now she tells me that cigar cutters have gone cold. They haven't gone cold they just need to be priced fairly.

The price guide associated with the cigar cutter book is very curious if for no other reason the author is selling his collection. There's nothing like jacking up prices when you are selling your collection. Please remember that prices for openers and corkscrews shown on the following pages are a reflection of my opinion (and several other JFO members). I have been collecting 20 years but in many cases what I would be willing to pay, other collectors would not. Geographical location plays a large part in my pricing guidelines along with having a good knowledge of what is in demand. In any event the prices do not reflect my selling my collection which I hope to maintain for many many years to come.

1997 Handbook Price Guide (*-Price Adjusted)

A-1	10-30	A-13	35-75	A-25	25-100	A-37	100	A-49	100
A-2	5-10	A-14	100	A-26	25-100	A-38	25-100	A-50	35
A-3	10-20	A-15	15-40	A-27	60 (*)	A-39	30-40 (*)	A-51	100
A-4	10-35	A-16	25-60	A-28	10-35	A-40	100	A-52	35
A-5	5-25	A-17	15-40	A-29	5-35	A-41	75 (*)	A-53	40-50
A-6	15	A-18	15-35	A-30	25-50	A-42	15-50 (*)	A-54	75
A-7	15-30	A-19	100	A-31	20	A-43	50-100	A-55	35
A-8	25 (*)	A-20	10-25	A-32	10-50	A-44	20-40	A-56	10
A-9	35-75	A-21	2-20	A-33	50-100	A-45	50 (*)	A-57	50-100
A-10	100	A-22	100	A-34	50-100	A-46	40-60 (*)	A-58	3
A-11	75	A-23	10-25	A-35	15-35	A-47	100	A-59	150 (*)
A-12	10-25	A-24	35-75	A-36	10	A-48	25	A-60	150

B-1	20-75 (*)	B-16	20-40	B-31	30-50	B-46	40	B-61	50
B-2	20-75	B-17	30-40	B-32	75	B-47	25	B-62	1-2
B-3	35-75 (*)	B-18	3-35	B-33	20-30	B-48	50	B-63	15-30
B-4	10-35	B-19	3-35	B-34	60 (*)	B-49	40	B-64	15-20
B-5	25-60	B-20	25	B-35	15-35	B-50	50	B-65	30
B-6	20-50	B-21	3-35	B-36	10-25	B-51	DELETE	B-66	50
B-7	30-60	B-22	3-35	B-37	75	B-52	30	B-67	DELETE
B-8	25-60	B-23	3-30	B-38	15-30	B-53	50	B-68	50
B-9	25-75	B-24	2-30	B-39	60	B-54	30	B-69	10
B-10	75	B-25	25-40	B-40	75	B-55	1-2	B-70	75
B-11	75-125	B-26	35-60	B-41	30	B-56	DELETE	B-71	100-150
B-12	50	B-27	25-50	B-42	25-50	B-57	1-2	B-72	100
B-13	10-30	B-28	100	B-43	75	B-58	1-2	B-73	3
B-14	3-25	B-29	30-75	B-44	75	B-59	DELETE	B-74	5
B-15	10-30	B-30	20-40	B-45	100	B-60	30-50		

C-1	35-100	C-11	2-10	C-21	2-20	C-31	30	C-41	10
C-2	25-100	C-12	1-20	C-22	3	C-32	15	C-42	5
C-3	35	C-13	1-20	C-23	15	C-33	15	C-43	10
C-4	5-10	C-14	2-10	C-24	5-150 (*)	C-34	15	C-44	10
C-5	5-10	C-15	2-10	C-25	35	C-35	20	C-45	2
C-6	2-10	C-16	1-10	C-26	30	C-36	10-20	C-46	DELETE
C-7	2-10	C-17	1-10	C-27	10	C-37	20	C-47	5
C-8	30	C-18	2-10	C-28	5-15	C-38	20	C-48	3
C-9	2-10	C-19	2-15	C-29	15-20	C-39	20		
C-10	2-10	C-20	2-15	C-30	50	C-40	50		

D-1	3-20	D-6	15-20	D-11	60	D-16	75	D-21	40
D-2	3-20	D-7	30	D-12	3-20	D-17	3	D-22	150
D-3	5-20	D-8	50-75	D-13	30	D-18	3		
D-4	5-15	D-9	3-20	D-14	15	D-19	3		
D-5	3-20	D-10	30	D-15	150 (*)	D-20	3		

1997 Handbook Price Guide (*-Price Adjusted)

E-1	2-25	E-8	5-30	E-15	10-20	E-22	20-30 (*)	E-29	15
E-2	2-25	E-9	2-25	E-16	10-30	E-23	20-35 (*)	E-30	40
E-3	2-25	E-10	DELETE	E-17	35-50 (*)	E-24	35	E-31	35
E-4	2-25	E-11	1-10	E-18	10-25	E-25	15-30		
E-5	2-25	E-12	DELETE	E-19	20-30	E-26	35		
E-6	2-30	E-13	2-25	E-20	5-10	E-27	20-25 (*)		
E-7	5-30	E-14	1-35	E-21	35	E-28	20-30		

F-1	10-20	F-7	10-20	F-13	50	F-19	30-40	F-25	30
F-2	5-30	F-8	10-20	F-14	35	F-20	40	F-26	20
F-3	10-25	F-9	30-60	F-15	10-20	F-21	30	F-27	25-40
F-4	10-25	F-10	DELETE	F-16	150 (*)	F-22	40	F-28	30
F-5	10-25	F-11	50	F-17	30	F-23	30	F-29	20
F-6	5-30	F-12	30-50	F-18	25-40	F-24	30	F-30	60

G-1	2-25	G-10	100 (*)	G-20	8	G-30	3	G-40	50
G-2	2-15	G-11	50	G-21	10-20	G-31	5	G-41	5
G-3	2-15	G-12	1-3	G-22	5-20	G-32	5	G-42	5
G-3-X	40 (C/S)	G-13	2-10	G-23	3	G-33	5	G-43	8
G-4	5-20	G-14	5	G-24	3	G-34	10	G-44	10
G-5	5-30	G-15	3	G-25	10-20	G-35	3	G-45	3
G-6	1-10	G-16	3	G-26	5	G-36	3		
G-7	1-10	G-17	3	G-27	8	G-37	3		
G-8	1-10	G-18	3	G-28	1-3	G-38	3		
G-9	1-20	G-19	100 (*)	G-29	3	G-39	3		

H-1	3-20	H-4	10-30	H-7	5-10	H-10	20-40		
H-2	3-20	H-5	5-10	H-8	5-40	H-11	5-10		
H-3	3-20	H-6	5	H-9	60 (*)				

I-1	1-5	I-7	1-25 (*)	I-13	1-5	I-19	1-5	I-25	75 (*)
I-2	1-5	I-8	15	I-14	1-5	I-20	1-5	I-26	5
I-3	1-5	I-9	10-15	I-15	1-5	I-21	2-10	I-27	1-5
I-4	1-5	I-10	20	I-16	1-5	I-22	1-5	I-28	2
I-5	1-5	I-11	1-5	I-17	1-5	I-23	2-5	I-29	DELETE
I-6	1-5	I-12	1-5	I-18	1-5	I-24	25 (*)	I-30	2

J-1	1-5	J-4	1-5	J-7	5-10	J-10	1-5	J-13	20
J-2	1-5	J-5	1-5	J-8	1-5	J-11	1-5		
J-3	1-5	J-6	1-5	J-9	1-5	J-12	2		

K-1	20-40	K-4	200-300	K-7	150 (*)	K-10	50	K-13	60
K-2	30-50	K-5	20-40	K-8	40	K-11	50		
K-3	10	K-6	50	K-9	50	K-12	50		

1997 Handbook Price Guide (*-Price Adjusted)

L-1	5-30 (*)	L-3	10	L-5	30	L-7	30	L-9	5
L-2	25-200 (*)	L-4	10-40	L-6	DELETE	L-8	5	L-10	20

M-1	25-150	M-25	25	M-49	2	M-73	75-125	M-97	5
M-2	25-150	M-26	75	M-50	10	M-74	10	M-98	10
M-3	15-150 (*)	M-27	15-25 (*)	M-51	1-5	M-75	20	M-99	20
M-4	5	M-28	35	M-52	50 (*)	M-76	30	M-100	10
M-5	10	M-29	1-5	M-53	2-10	M-77	60	M-101	5
M-6	30-75	M-30	1-5	M-54	1-5	M-78	60	M-102	5
M-7	25	M-31	1-5	M-55	25	M-79	10	M-103	75
M-8	40	M-32	5	M-56	40	M-80	20	M-104	10
M-9	5-10	M-33	15	M-57	40 (*)	M-81	1-5	M-105	5
M-10	5	M-34	1-5	M-58	15	M-82	1-5	M-106	10
M-11	2	M-35	10-20	M-59	15	M-83	1-5	M-107	10
M-12	2	M-36	20	M-60	5-10	M-84	50 (*)	M-108	20
M-13	2	M-37	40	M-61	25	M-85	10	M-109	35
M-14	15	M-38	5	M-62	25	M-86	15		
M-15	20	M-39	10	M-63	15	M-87	10		
M-16	15	M-40	15	M-64	15-20 (*)	M-88	15		
M-17	10	M-41	10	M-65	15-20 (*)	M-89	10		
M-18	15	M-42	20	M-66	20	M-90	1-5		
M-19	10-35	M-43	1-5	M-67	60 (*)	M-91	1-5		
M-20	40	M-44	10	M-68	40	M-92	1-5		
M-21	40	M-45	15	M-69	15	M-93	1-5		
M-22	40	M-46	5	M-70	1-5	M-94	5		
M-23	5-10	M-47	75 (*)	M-71	1-5	M-95	15		
M-24	5	M-48	75 (*)	M-72	20	M-96	10		

N-1	40	N-20	15-35	N-39	15	N-58	15	N-77	25
N-2	10	N-21	30	N-40	10-25	N-59	40	N-78	75
N-3	3-15	N-22	30-50	N-41	10	N-60	35	N-79	25
N-4	30-60	N-23	5	N-42	40-50	N-61	75	N-80	75
N-5	75	N-24	15-30	N-43	20-30	N-62	35	N-81	5
N-6	250 (*)	N-25	5	N-44	100	N-63	200	N-82	35-75
N-7	75	N-26	35	N-45	10	N-64	75	N-83	40
N-8	75	N-27	15	N-46	30	N-65	10	N-84	10
N-9	10-30	N-28	DELETE	N-47	75	N-66	40-50	N-85	60
N-10	10-25	N-29	15-35	N-48	75	N-67	40	N-86	75
N-11	10-25	N-30	1-5	N-49	100 (*)	N-68	75	N-87	75
N-12	50 (*)	N-31	5	N-50	35	N-69	15		
N-13	30	N-32	40	N-51	30-50	N-70	75		
N-14	5	N-33	60	N-52	75	N-71	35		
N-15	5	N-34	30	N-53	35	N-72	35		
N-16	10	N-35	25	N-54	100	N-73	50		
N-17	30	N-36	40-50	N-55	100	N-74	75		
N-18	10	N-37	10	N-56	10	N-75	10		
N-19	15	N-38	15	N-57	15	N-76	50		

1997 Handbook Price Guide (*-Price Adjusted)

O-1	40-50 (*)	O-5	2-20	O-9	20	O-13	10	O-17	20
O-2	10-25	O-6	30-40 (*)	O-10	30-40 (*)	O-14	20	O-18	100
O-3	15	O-7	15	O-11	50 (*)	O-15	15		
O-4	15-30	O-8	30-40 (*)	O-12	75 (*)	O-16	20		

P-1	30-100	P-31	15-30	P-61	30-50	P-91	DELETE	P-121	100
P-2	100-200	P-32	150	P-62	75-100	P-92	5	P-122	50
P-3	50-100	P-33	25-50	P-63	100	P-93	150	P-123	150
P-4	75	P-34	125	P-64	500	P-94	75-100	P-124	60
P-5	50-125	P-35	500	P-65	150	P-95	35	P-125	125
P-6	25-50	P-36	10-30	P-66	10-30	P-96	150	P-126	75
P-7	25-50	P-37	75	P-67	200	P-97	DELETE	P-127	100
P-8	15-50	P-38	125-250	P-68	50-75	P-98	3	P-128	50
P-9	25-60	P-39	150	P-69	125-250	P-99	DELETE	P-129	60
P-10	15-50	P-40	300	P-70	100-200	P-100	200	P-130	35
P-11	125	P-41	50	P-71	250	P-101	125	P-131	125
P-12	25-50	P-42	50	P-72	800	P-102	125	P-132	40
P-13	125	P-43	20-50	P-73	75-125	P-103	50-100	P-133	60
P-14	10-30	P-44	100	P-74	10-30	P-104	20		
P-15	10-30	P-45	500	P-75	100	P-105	125		
P-16	20-50	P-46	10-30	P-76	125	P-106	35		
P-17	30-60	P-47	50	P-77	75	P-107	250		
P-18	50-75	P-48	125	P-78	75	P-108	250		
P-19	10-30	P-49	75	P-79	300	P-109	100		
P-20	20	P-50	75	P-80	150	P-110	250		
P-21	50	P-51	15-50	P-81	100	P-111	500		
P-22	15-30	P-52	100	P-82	15-50	P-112	75		
P-23	30-60	P-53	10-30	P-83	500	P-113	20		
P-24	25-50	P-54	15-50	P-84	600	P-114	400		
P-25	150-250	P-55	25	P-85	20-40	P-115	75		
P-26	150-250	P-56	50	P-86	75	P-116	60		
P-27	25	P-57	15-50	P-87	150-250	P-117	50		
P-28	50-75	P-58	50	P-88	75-125	P-118	40		
P-29	125	P-59	60	P-89	DELETE	P-119	10		
P-30	500	P-60	40	P-90	50	P-120	100-150		

Q-1	3	Q-12	3	Q-23	3	Q-34	3	Q-45	3
Q-2	3	Q-13	3	Q-24	3	Q-35	3	Q-46	3
Q-3	3	Q-14	3	Q-25	3	Q-36	3	Q-47	3
Q-4	3	Q-15	3	Q-26	3	Q-37	3	Q-48	3
Q-5	3	Q-16	3	Q-27	3	Q-38	3	Q-49	3
Q-6	3	Q-17	3	Q-28	3	Q-39	3	Q-50	3
Q-7	3	Q-18	3	Q-29	3	Q-40	3	Q-51	3
Q-8	3	Q-19	3	Q-30	3	Q-41	3		
Q-9	3	Q-20	3	Q-31	3	Q-42	3		
Q-10	3	Q-21	3	Q-32	3	Q-43	3		
Q-11	3	Q-22	3	Q-33	3	Q-44	3		

1997 Handbook Price Guide (*-Price Adjusted)

R-1	10	R-5	75	R-8	800-1000	R-12	20	R-16	5
R-2	20	R-6-1	300 (Brass)	R-9	100	R-13	20	R-17	5
R-3	40-50	R-6-2	500 (Paint)	R-10	100	R-14	50		
R-4	250	R-7	50	R-11	50	R-15	10		

S-1	25	T-1	25	X-1	50	X-5	15		
S-2	50	T-2	25	X-2	30	X-6	15		
S-3	50			X-3	10	X-7	5		
				X-4	15	X-8	15	Z-1	30

Please use the following guidelines when using these prices:

- 1) **Condition** Prices are for openers in at least excellent condition.
- 2) **Scarcity** Openers with the highest prices are generally the hardest to find openers especially in nice condition. Several types have few examples known and this is reflected in the price.
- 3) **Demand** Malt companies or the more common brewery names are at the low end. Small breweries or breweries in business for a short time bring the highest value. Also certain areas of the country have more collectors looking for openers from that area (Ex: Missouri or Pennsylvania).

(* Denotes price change from original listing. For example the price of an A-8-1 Knickerbocker was lowered to \$25. In the last few months a large supply (50) has turned up in New York City. The asking price is \$15 and condition varies. Once this supply dries up the price should go back up. The two A-8s in my collection were bought for \$40 and \$35 five to six years ago. As in any price guide situation a discovery of a hoard of openers will certainly effect the price.

Most other price changes reflect recommendations by JFO members. For example the F-16 Wacker has only one known example which resides in the Don Bull collection, so I increased the price to \$150 to reflect scarcity and the fact that several Lancaster, PA collectors would love to own the piece.

Fantasy Opener "Dixie Beer Co" (Dixie Beer Co Never Existed)

The following opener was made about 10 years ago and at that time sold for \$2-\$4. Since it was not actually issued by a brewery it will not be listed as a D-Type in the Handbook. Present value is \$5.



To Let New Members Know This is Not a Actual Brewery Produced Opener

AUCTION NEWS

"Zang's Mini Auction": A-8 Ruppert (VG), B-2-30 Hanley (VG-No Paint), B-21-45 Kazmaier (G), O-6 SeeWee Quality Beverages (VG Red on White). Each Opener goes to highest bidder. Closes May 31st. Tony Zanghi, 2225 Deer Trail Rd, Coopersburg, PA 18036

Joe Cardone's Auction. Joe Cardone has been running monthly auctions since JFO started in 1979. He usually offers between 200 openers/corkscrews each auction. The main emphasis is on beer advertising openers. There is no charge for the auction. Anyone interested or anyone wanting Joe to sell (20% commission) their collection should contact:

Joe Cardone, 917 Gainsborough Rd Dayton, OH 45420-3709

(Joe Always Needs Openers To Sell)

If you do receive Joe's auction, please try to bid on something. Joe will send you the next auction as long as you are an active bidder. If you do not bid, he will not send you the next auction.

Lynn Geyer's "Advertising Auctions". Main emphasis is on Breweriana (some openers). Cost is \$25.00. Advertising Auctions, 300 Trail Ridge, Silver City, NM, 88061 (505) 538-2341

Fink's Off The Wall Auctions. Main emphasis is on Breweriana (some openers). The cost is \$18.00. Finks Off The Wall Auctions, 108 E. 7th St., Lansdale, PA, 19446 (215) 855-9732

OTHER CLUBS

American Breweriana Association (ABA) offers a magazine (American Breweriana Journal) 6 times a year on breweriana collecting and an annual convention. Dues are \$25.00 per year. Contact Chris Galloway, Executive Director, P.O. Box 11157, Pueblo, CO, 81001

Canadian Brewerianist offers 10 issues per year (The Canadian Brewerianist) on Canadian Breweriana collecting and an annual convention. Dues are \$22.00 per year (US Funds). Contact Loren Newman, 2978 Lakeview Trail, Bright's Grove, Ontario, CANADA, N0N 1C0

Canadian Corkscrew Collectors Club (CCCC) offers a quarterly newsletter (The Quarterly Worme) on corkscrew collecting and an annual convention. Dues are \$30.00 per year. Contact Milt Becker, P.O. Box 9863, Englewood, NJ, 07631

East Coast Breweriana Association (ECBA) offers a quarterly newsletter (The Keg) on breweriana collecting and an annual convention. Dues are \$20.00 per year.

Contact John Stanley, PO Box 64, Chapel Hill, NC 27514-0064, (919) 419-1546

MICROBES (Micro Chapter ECBA): offers a quarterly newsletter on Micro Breweriana. Dues are \$7.00 per year. Contact Roger Levesque, PO Box 826, South Windsor, CT 06074

Figural Bottle Opener Club (FBOC) offers a quarterly newsletter on three-dimensional and either free standing or wall-mounted openers and an annual convention.

Dues are \$20.00 per year. A full color guide book is offered for \$28.00.

Contact Charles Lesser, 1953 Sugar Stick Rd., Harrington, DE, 19952, (302) 284-4792

National Association Breweriana Advertising (NABA) offers a magazine (The Breweriana Collector) 4 times a year on breweriana collecting and an annual convention. Dues are \$20.00 per year. Contact Robert Jaeger, 2343 Met-To-Wee Lane, Wauwatosa, WI, 53226

WANTED (Please remember there is no charge for Ads)

Canadian Openers & Corkscrews to sell? Bring them to Buffalo! (Larry collects all Canadian Breweriana). Larry Sherk, PO Box 98094, Toronto, Ontario M4M 3L9 CANADA

Members to Swap Openers for Openers, Trade List for Trade List. People who are starting out like myself who want to build their collections from other members in different parts of the country. Write or Call Scott Sherman, W5268 Quarry Rd Appleton, WI, 54915, (414) 954-1168

A-1-9 Golden Glow, B-18-439 Port Townsend, B-23-149 Golden Glow, E-9-111 Golden West & O-4-22 Golden Glow. Also any Breweriana (Large or Small) from Golden West Brewing Co. of Oakland, CA & Port Townsend Brewing Co. of Port Townsend, WA. Buy or Trade. John Cartwright, 950 Marlene St Apt B, Ukiah, CA 95482

A-9 Baseball Players (Beer or Non-Beer). Beer ones needed: A-9-8 Eureka, A-9-21 Amber, A-9-26 Penn, A-9-29 Waldorf, A-9-30 Bethlehem, A-9-37 Butte, & A-9-38 Eagle. (Please note that John Stanley will trade out of his collection to help Ed get the openers listed) Ed Kaye, 7077 Cedarhurst Dr, Fort Meyers, FL, 33919, (941) 590-3068

B-45, B-66, I-7, P-72, P-100, R-14 types with a Corkscrew (Beer or Non-Beer) Herb Danziger, 550 Cherry Ct, Birmingham, MI, 48009-1459, (810) 646-9470

Types, A-18, A-34, A-42, B-6, B-7, B-22, B-31, H-1 & Pepsi-Cola Openers. Write for latest trade/want list. John Stanley, PO Box 64, Chapel Hill, NC 27514-0064, (919) 419-1546

Need These Types: A-22-1 Ballantine, B-59-1 Providence, and C-1-7 Budweiser. Great Trades Available. Jack Ford, 5351 Boyd Ave, Oakland, CA, 94618, (510) 655-5393

A-43-Dixie Beer. Want to buy straight out. Marc Benjamin, 167 Nixon Beach Rd., Edenton, NC, 27932, (919) 482-2099

Beverwyck-B-18-499, B-21-147, C-10-48, E-9-87, F-6-87, I-2-2, I-14-1, J-5-5a, Dobler-I-11-232, I-18-6, Fitzgerald-C-20-12, I-12-23, I-18-9, Hedrick-E-9-55, Hinckel-P-30-1, Quandt-P-8-118, P-35-2, Stanton-A-20-13, C-12-103, C-18-24, Isengart-E-8-59, Stoll-B-18-380, E-8-107, Misc-A-28-40. Want to Buy. Bill Laraway, 627 Kenwood Ave, Delmar, NY, 12054, (518) 439-2739

C-2-6 Valley Forge, B-28 Howell & King, B-37 DuBois, and F-16 Wacker. Cash or Trade. My A-11-1 Wooden Shoe (EX) for Harley-Davidson Bike and Goodyear Airplane Figurals. Tony Zanghi, 2225 Deer Trail Rd., Coopersburg, PA, 18036, (610) 346-8232

"E"'s! Have Trade List (various types) to send for "E"'s that I need or will buy. Larry Moter, 10149 Michaels Rd, Woodford, VA, 22580, (804) 448-3928

Have M-60-UL Griesedieck Bros, will trade for E-2-19 Yuengling Por-Tor or E-9-108 Yuengling Special. Harold Queen, 1001 Centre Ave, Jim Thorpe, PA, 18229, (717) 325-2612

"E" Type Openers Wanted. Will Trade my "C", "E" and "I" Types. Please send list of what you have and I'll send my list. Ralph Tewksbury, 84 Wildwood Dr, Parkersburg, WV 26101 (304) 863-3627

WANTED (Continued) (Please remember there is no charge for Ads)

"Searching For: E-11-18 Arrow, E-11-9 Lone Star, H-6-1 Blatz, H-6-2 Carling, H-6-8 Falstaff, H-6-3 Olympia, H-6-7 Olympia, H-6-4 Pabst, H-6-9 Pabst, H-6-14 Pabst and H-6-6 Schlitz. I-7-43 Acme, I-7-82 Balboa, I-7-46 Berghoff, I-7-64 Edel Brau, I-7-50 Falls City, I-7-79 Frederick, I-7-54 Manhattan, I-7-68 Manhattan, I-7-30 NuGlobe, I-7-55 Old Dutch, I-7-34 Pilsner and I-7-58 St Claire. Will buy or trade (from collection if necessary).
Tom Gormally, 100 Nelson Pl, Westfield, NJ 07090, (908) 233-8867

M-2 Hires Root Beer "It's Pure" Opener in Good Condition. Will Pay Handsomely (\$250)!
Steve Sourapas, 1212 9th Ave West Unit 2, Seattle, WA, 98119, (206) 282-9922

H-8-5 Esslinger "Little Man Standing", H-8-19 Atlantic (Beer Garden Scene),
L-1-5 Pabst and L-1-8 Manns. Have some traders.
Harry Horn, 3113 Smoky Ct, Sacramento, CA, 95826, (916) 362-3590

"I-5" 2,4,6,8,9,10,12,14,15 and "E-11" 2,8,9,11,14,16,17,18. Would like to Purchase.
John Patton, 701 Montana SP208, Barstow, CA, 92311

DO THEY REALLY EXIST? I still want I-7-82,46,54,68,34,58,9,56 or other tough I-7
openers in VG or better condition. Will cut the chase and offer cash for your openers.
Tony Ricicki, 9 Laird Terrace, Somerset, NJ, 08873, (908) 873-0301

I-7 Beer or Non-Beer Openers. Do you have any that say "Vaughan" on the back?
If so I'm interested. Extensive trade list or cash.
Hale Milano, 506 Springhouse Road, Camp Hill, PA, 17011-1454, (717) 737-5067

"I"-Types: Will send 10 "I" types from Wisconsin breweries to anyone with openers from
states other than Wisconsin & Illinois. Will trade for what you think is equal value.
Darwin Wilcox, 8495 Croix Tr, Roscoe, IL, 61073, (815) 623-2255

"I" & "J" Beer Types available for trade. Also interested in obtaining Beer Tap Handles
(Markers) for collection I share with my grandson.
Jack Westall, 5945 Shallow Creek Dr, Milford, OH, 45150, (513) 248-1127

M-3s #10,40,35,8,22,23,24,25,41,26,39,32,33,36,34,42,37,6
Vic Keown, 10547 Mert Ave, Saint Ann, MO, 63074, (314) 428-6343

M-3-27 Trommers, M-3-36 Piel Bros, M-3-39 Hialeah, M-3-41 Harrison (Heidelberg), M-3-42
Seitz to complete collection. Cash or Trade.
Ben Hoffman, 213 Simmons Rd, Perkiomenville, PA, 18704, (610) 287-8243

M-19 Marked "Tiffany & Co" on Handle End, Silver Plated. Also any Elgin, ILL Openers &
Figural Bottle Openers. Mike Caraker, PO Box 1233, Elgin, IL, 60121, (847) 742-6165

P-19-10 Kalispell, P-18-3 Washoe, P-31-6 Eureka, Purchase or Trade.
Have P-19-2 Townsend, M-73 Highlander Sliders (Red & Blue), and many other P's for trade.
Trade M-73 Highlander (Red & Blue) for M-73 Kessler or M-73 Lorelei (any colors).
Bill Pattie, 37050 SE 89th St., Snoqualmie, WA, 98065, (206) 888-2496

WANTED (Continued) (Please remember there is no charge for Ads)

Bar Mount K-2 Blatz, K-8, K-9. Ed Broders, 10220 Westwood, Baton Rouge, LA, 70809-3243

Wanted following Openers which have a Cigar Cutter. B-28, N-6, N-28, N-49, P-29, P-48. With or Without Brewery Advertising. Also any other Cigar Cutters. Cash or will Trade if I have your wants. Bill Ennis, 12220 14th Dr SE, Everett, WA, 98208

Cigar Box Openers: SHM-2,8,10,11,13,14 DHM-13,14,15,16 RBO-3,9,12 HOR-2,3 RND-6,8,9,10 SQR-1,4 NL-6 BB-1,6,19 BUT-2,4 PKT-1,5,6,8,9,10 SEP-2,6,7,8,9 MIS-4,6,7,10,11. Will purchase or trade from 600+ collection. (Types from the Cigar Box Opener Handbook copies available from Mike for \$3.00 which includes mailing)
Mike Schwimmer, 325 E. Blodgett Ave., Lake Bluff, IL, 60044-2112, (708) 295-1901

Cigar Box Openers-Will Buy or Trade for other C.B.O.s or Beer Openers.
Glen Enloe, 805 Teepee Dr, Independence, MO, 64056, (816) 796-9965

Older COCA-COLA Openers from the 40s and Earlier.
Robert Bongiovanni, 154 Springers Mill Rd., Cape May Court House, NJ, 08210

Connecticut Openers Wanted: Write for want and trade lists.
Paul Gauvin, 24 Strawberry Ln, Manchester, CT, 06040, (860) 646-9722

Corkscrews and Tin Can Openers: Have Beer Openers for Trade.
Joe Young, 36 S. Weston Ave., Elgin, IL, (847) 695-0108

Corkscrews, Beer Advertising Letter Openers, Beer Advertising Knives, and Postcards depicting Corkscrews. Please send description, photo, sketch, photocopy, or tracing of what you have and advise price wanted.
Don Bull, 20 Fairway Drive, Stamford, CT, 06903, (203) 968-1925

Corkscrews: Esp. Figural, Syroco, Thomason, Bakelite; also Wine Ephemera (Ads, Postcards, Labels, Grape Box Labels, Etc.); and Bakelite Anything. Buy Straight Out.
Abby Nash, 172 Bush Lane, Ithaca, NY, 14850, (607) 266-0690

Corkscrews: Esp. Walker's "Waiters & Hallboys" and any old Williamson wire shafted "T"s with any attachments to the wood handle (such as brushes and wire cutters).
John Vlossak, 1044 East Eldorado St., Appleton, WI, 54911, (414) 739-2789

For Dick's Beer Quincy, IL Collection: B-18-168, E-4-27, O-4-27, P-8-69. Also my P-1-2 Anheuser-Busch Corkscrew & \$30 for your P-1-4 Toledo Brewing Co., or P-73-3 F. D. Radeke Brew. Co., or P-89-1 Banner Brewing Co., or P-97-1 National Brewery Co.
Ollie Hibbeler, 298 Highline Road, Lake Ozark, MO, 65049

Dixie Beer Openers: B-19-199, E-6-133, I-11-169, I-12-17, I-22-21, N-2-2. Do they really exist? Wish to purchase. Lew Burritt, 125 Vogt Dr., Belle Chasse, LA, 70037, (504) 394-3567

From the Enterprise Brewing Co of Fall River, MA: A-20-47, B-18-26, B-21-430, C-12-135, E-13-35, E-14-526, E-14-779, I-11-13, J-1-1, and N-22-1.
Dave Dubrul, 88 Linden Terrace, Burlington, VT, 05401, (802) 864-2089

WANTED (Continued) (Please remember there is no charge for Ads)

"F" Type Beer Advertising Openers, Beer Advertising Letter Openers, Beer Advertising Match Safes and Beer Advertising Knives (with or without openers on them).
Larry Biehl, 448 Crandon, Calumet City, IL, 60409

Idaho and Montana Beer Openers, especially from Kessler Brewing Co of Helena, MT and Sunset Brewing Co of Wallace, ID. Newer collector looking to expand current collection.
Steve Armstrong, PO Box 1938, Orofino, ID, 83544, (208) 476-0128

Any Openers from Jamestown Brewing Co, Kuhn's Beer, Chautauqua Brew, Monessen, PA, Independent Brewing Co, unusual Schaefer, and all Cleveland Beers.
Ed Schaefer, 366 Bassett Rd., Bay Village, OH, 44140, (216) 871-0449

Lexington Brewery (Dixie Beer) & Coca-Cola Openers. Want to buy any figurals or unusual older examples of these. Also looking for old manufacturer's brochures or catalogs (originals or copies of). Thom Thompson, 123 Shaw Ave., Versailles, KY, 40383, (606) 873-8787

Louisiana Brewery Openers from the following breweries: Old Union, 4-X, New Orleans Brewing Co., Dixie, Regal & Jax. I would like to sell or trade for openers a Seagram's Mount Royal light illuminated sign with clock #0710348021104.
Ed Broders, 10220 Westwood Ave, Baton Rouge, LA, 70809, (504) 293-2373

New York Openers: A-35-43 Westchester, B-13-112 Watertown, B-18-581 Hauck & Sons, E-31-1 Orange, G-5-42 Kuhlman, P-125-1 Iroquois. I have Tons of great openers to trade.
Mark Barren, 6141 Tachi Dr., Newfane, NY, 14108-9517, (716) 778-9724

Wooden Shoe (Minster, Ohio) and Sebald (Middletown, Ohio) Brewery Items.
Jim Stork, 7504 Parliament Crt, West Chester, OH, 45069

"Starr" Wall Mounted Openers with Soft Drink Advertising (see Jan/97 JFO) Will buy or trade. Have Ford Motor Co 4-page fold-out brochure from the 30s advertising Trucks & Cars for the Brewing Industry (mainly NY state vehicles) and P-8-86 Atlanta Brewing & Ice Co for trade (both in VG). Mike Rose, 1201 First Ave GA, Andalusia, AL 36420, (334) 222-7814.

Trade Match Safe (Good) from "Gerhard Lang, Park Brewery, Buffalo, NY / Buffalo Beer is Famous Lang Has Made It So." for A-10, A-14, A-19, A-22, A-37, A-40, A-41, A-49, A-51, B-28, N-5, N-7, N-8 or N-44. Gerry McLellan, 641 Waverly St, Framingham, MA, 01702

WASHINGTON D.C. Openers and/or Corkscrews. Also figural corkscrews.
Sandra Emme, PO Box 1454, Upper Marlboro, MD, 20773, (301) 627-8207

West Virginia Openers (B-7-12, B-18-110, and H-4-3), also Southern US Beer openers and corkscrews. Roger Jarrell, 1500 Sedwick Rd., Durham, NC, 27713, (919) 544-7787

This Space is Waiting For Your AD

SELLING (Please remember there is no charge for Ads)

Non-Beer "F-Type" Openers For Sale. Send SASE for list.

Darwin Miller, #32 La Canada Way, Hot Springs Village, AR, 71909, (501) 922-1615

"Openers and Corkscrews For Sale", Send SASE (Business Size) for 4 page list.

Carl T. Jantos, 7025 Kevin Drive, Bethel Park, PA, 15102-3913

"American Breweries II": by Dale Van Wieren. Over 18,000 entries for nearly 8,000 brewing firms, tracing names, addresses, and dates of operation. (\$28 1st Class).

John Stanley, PO Box 64, Chapel Hill, NC 27514-0064

"JFO Back Issues" xeroxed for \$50.00 postpaid. Xerox copies of all JFO back issues 1979-96 (72 issues). John Stanley, PO Box 64, Chapel Hill, NC 27514-0064

1997 Handbook of United States Beer Advertising Openers and Corkscrews,

\$22.00 postpaid. John Stanley, 3712 Sunningdale Way, Durham, NC, 27707

Just For Openers Auction Guidelines
--

Please Note: No Commission Is Charged For Any Openers Consigned

This auction is a service to members of JFO. Consignments can consist of up to 20 openers (of course if you have more than 20 nice openers and/or corkscrews for the auction, I would consider auctioning the whole lot). I would appreciate anyone wishing to submit openers for the auction, write me first. Include a list of openers you wish to auction along with a condition for each item. If you wish to auction an item with a value of over \$50.00 I would be willing to place a reasonable minimum bid on the item. Any openers submitted for the auction should have a minimum value of \$5.00. I presently have many less than \$5.00 openers available for the auction. Money received for your openers is sent to you within 3 to 4 weeks of the closing date.

Please Write First Before Sending Consignment Material.

JFO has New Member from Israel

Josef Abas is a new member from Israel. He has collected corkscrews and bottle openers for 40 years. He has 1200 openers and corkscrews in his collection. Interestingly he does not buy or sell openers, he just receives them, finds them or asks for them. He started collecting in 1958 when he lived in Holland and when he moved to Israel he had about 30 openers. Amazingly when Josef asked a South African collector for a name for his opener collection the person told him to call it "Just For Openers". So our club has the same name as Josef's collection. A picture of his club card is shown below. Good luck with your collecting Josef.

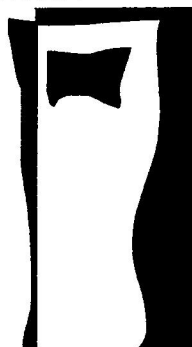
JUST FOR OPENERS

Josef Abas

Kibbutz Misgav Am

Mobile post upper Galile
 Zip code 12155, Israel
 Tel. Home: 972.6.953601
 Tel. Museum: 972.6.953170
 Fax: 972.6.953150

32



Results of January 1997 JFO Auction Closing February 12, 1997

1	A-001-016	MONTANA	G	\$30.00	74	B-024-010	DUTCH CLUB	EX	\$6.30
2	A-001-021	EL CAPITAN	G	\$12.51	75	B-024-022	LUCKY LAGER	G	\$15.26
3	A-001-025	LEMBECK & BETZ	VG	\$24.50	76	B-024-023	MATHIE-RUDER	VG	\$6.30
4	A-001-XX	BAY VIEW BOTTLING	VG	\$7.70	77	B-024-030	RAINIER	VG	\$21.00
5	A-002-XX	LOU'S TAVERN	EX	\$7.70	78	B-024-057	ACME SAN FRANCISCO	VG	\$21.00
6	A-002-XX	CLARA & AL'S CAFE	EX	\$12.57	79	B-024-075	BECKER	EX	\$22.50
7	A-002-XX	LELA & WYLIES PLACE	G	\$7.70	80	B-035-XX	WINDSOR GINGER ALE	VG	\$16.51
8	A-002-XX	HOWARD'S AMERICAN CAFE	VG	\$7.70	81	C-000-LOT	C-13-21-150 C-14-22 C-17-11-66	G	\$7.02
9	A-005-015	IDEAL FOOD PRODUCTS	EX	\$11.07	82	C-002-001	PHOENIX (SCRIPT)	VG	\$38.50
10	A-005-UL	OSCAR SABBE MALT	VG	\$20.15	83	C-009-004	BRUCKMANN	VG	\$3.52
11	A-005-XX	MAJESTIC HOTEL	G	\$11.07	84	C-009-019	ACME	G	\$20.00
12	A-005-XX	ALIQUIPPA BOTTLING	VG	\$11.07	85	C-009-XX	HUSTINGS SOFT DRINK	VG	\$8.10
13	A-007-013	MOHAWK	EX	\$37.50	86	C-010-004	BEVERWYCK	EX	\$8.66
14	A-007-XX	WHISTLE BOTTLING	G	\$17.00	87	C-012-001	A-B-C	G	\$5.00
15	A-009-003	HOSLER-COLUMBUS	G	\$48.50	88	C-012-022	R & H	VG	\$3.00
16	A-009-010	KAMM & SCHELLINGER	EX	\$60.00	89	C-012-034	ALPEN BRAU (BOTTLE)	G	\$3.26
17	A-009-017	SHELL	G	\$45.50	90	C-013-007	BREIDT	VG	\$4.50
18	A-009-XX	PAUL GEORGE	G	\$22.00	91	C-013-018	CREAM CITY	VG	\$8.00
19	A-009-XX	HIPPODROME	PO	\$10.00	92	C-013-029	ELDRIDGE (BOTTLE)	EX	\$1.06
20	A-012-XX	BLANKS EVERETT	EX	\$7.70	93	C-013-052	GOLDEN GLOW (BLOCK)	VG	\$10.00
21	A-013-XX	IDEAL GARAGE	VG	\$11.00	94	C-013-091	RUPPERT	G	\$1.06
22	A-013-XX	HOLMES & BROS GARAGE	G	\$11.50	95	C-013-110	STERLING	G	\$1.06
23	A-014-001	RAINER	VG	\$132.00	96	C-013-112	TERRE HAUTE	VG	\$1.89
24	A-015-003	CLEVELAND & SANDUSKY	PO	\$20.00	97	C-013-132	GEM	VG	\$5.50
25	A-015-013	TERRE HAUTE	PO	\$7.70	98	C-013-201	BIRK BROS	G	\$1.89
26	A-016-XX	CHARLES CITY BOTTLING	EX	\$62.02	99	C-013-240	PIONEER	G	\$20.00
27	A-018-020	FISHER	PO	\$20.00	100	C-013-XX	CAL COLA (BOTTLE)	G	\$6.05
28	A-021-002	BLATZ	G	\$6.00	101	C-015-015	BUCKEYE	EX	\$8.50
29	A-021-XX	HYATT'S GOOD BEER	VG	\$6.00	102	C-017-016	MONARCH	EX	\$3.50
30	A-023-004	HEINLY	M	\$24.15	103	C-017-036	HOME	G	\$4.00
31	A-029-070	REINE	G	\$14.15	104	C-018-011	TROMMER	G	\$3.52
32	A-029-XX	SAEGERTOWN	G	\$3.52	105	C-022-002	RUPPERT	VG	\$12.00
33	A-029-XX	TRY ME	G	\$7.70	106	C-032-001	RAINIER	VG	\$22.52
34	A-031-XX	NATIONAL OIL SEALS	EX	\$15.51	107	C-041-XX	ALBERTA (CANADIAN)	EX	\$5.25
35	A-039-XX	JIM'S HILLTOP LIQUORS	VG	\$7.70	108	D-000-LOT	D-1-1 D-5-11 D-12-3	G	\$9.51
36	A-039-XX	NATIONAL PRESS INC	M	\$7.70	109	D-001-011	BLUMER	VG	\$3.52
37	A-042-XX	INGLESIDE GINGER ALE	PO	\$11.11	110	D-003-013	SCHOENHOFEN	PO	\$1.06
38	B-000-LOT	B-13-18 (2)B-14-41 B-14-85	VG	\$6.02	111	D-003-XX	FRASER & NEAVE	G	\$6.30
39	B-001-05A	PITTSBURGH (STEEL)	G	\$20.15	112	D-005-011	POINT	G	\$4.50
40	B-002-01A	BLATZ (STEEL)	G	\$27.50	113	D-006-001	BRUCK	G	\$10.51
41	B-002-XX	COCA-COLA (STEEL)	G	\$23.00	114	D-009-006	MELLOW	G	\$7.51
42	B-004-002	SCHIEDT (BRASS)	G	\$20.00	115	D-009-009	PEOPLES	VG	\$8.51
43	B-005-XX	CAMPANELLA CIGARS	EX	\$20.00	116	E-000-LOT	E-11-1-3-12 E-13-8-9-13	VG	\$6.02
44	B-007-XX	BEN HUR 5C CIGAR	G	\$15.06	117	E-001-011	MOUNT CARBON	G	\$7.26
45	B-013-005	GOLDEN WEST	PO	\$20.00	118	E-001-037	STAR	EX	\$12.00
46	B-013-049	GOLDEN RIBBON MALT	G	\$21.50	119	E-003-005	FISHER	VG	\$1.89
47	B-014-001	ATLAS	VG	\$6.30	120	E-003-008	GRIESEDIECK BROS	VG	\$7.26
48	B-014-026	HAMM'S BEVERAGES	PO	\$1.06	121	E-004-010	ATLAS	VG	\$9.26
49	B-014-119	ZOLLER	EX	\$26.06	122	E-004-015	BUCKEYE	EX	\$5.51
50	B-014-XX	COCA-COLA POWER PLANT	G	\$21.00	123	E-004-016	BUFFALO	VG	\$10.27
51	B-018-010	BUSHKILL	EX	\$6.30	124	E-004-033	FALLS CITY	VG	\$6.51
52	B-018-219	SEATTLE	EX	\$8.00	125	E-004-035	FALSTAFF (BREWERS')	G	\$6.51
53	B-018-226	SOUTH BEND TIGER	VG	\$8.00	126	E-004-038	GLOBE	VG	\$2.01
54	B-018-280	HOSLER-COLUMBUS	PO	\$6.30	127	E-004-047	HUDEPOHL	G	\$2.01
55	B-018-UL	HACK & SIMON	PO	\$20.00	128	E-004-048	HUMBOLDT	G	\$8.79
56	B-018-XX	PLE Z EE SOFT DRINK	EX	\$14.55	129	E-004-050	MANITOWOC	G	\$2.01
57	B-019-035	SEATTLE	VG	\$8.51	130	E-004-068	PRIMA	G	\$2.01
58	B-019-089	HOME	G	\$25.00	131	E-004-077	ST CLAIRES	G	\$7.50
59	B-019-170	MINNEAPOLIS	EX	\$6.30	132	E-004-091	TACOMA	VG	\$12.51
60	B-019-XX	OAKLAND PIONEER SODA	G	\$6.30	133	E-004-121	HUMBOLDT MALT	G	\$10.65
61	B-021-041	INDIANAPOLIS	G	\$6.30	134	E-004-176	KOERBER	VG	\$8.79
62	B-021-052	MOERLEIN	VG	\$8.00	135	E-004-220	COLUMBIA	VG	\$12.79
63	B-021-068	RADEKE	VG	\$27.10	136	E-004-254	GOLDEN WEST	PO	\$6.79
64	B-021-084	TACOMA	G	\$12.00	137	E-004-296	WIELAND LAGER	G	\$10.15
65	B-021-113	JUNG	G	\$6.30	138	E-005-UL	(EAGLE IN A)	VG	\$25.00
66	B-021-149	CHATTANOOGA	PO	\$25.00	139	E-005-029	MATHIE RUDER	VG	\$6.50
67	B-021-UL	DECATUR	G	\$50.00	140	E-005-037	FORT PITT	VG	\$5.75
68	B-021-XX	FREAS CIGARS TOBACCOS	VG	\$15.06	141	E-005-058	PABST BLUE RIBBON	EX	\$15.00
69	B-022-UL	LEMP	PO	\$50.00	142	E-006-008	BURKHARDT	VG	\$12.79
70	B-023-029	TERRE HAUTE	G	\$6.30	143	E-006-020	EASTSIDE	VG	\$12.15
71	B-023-069	HAMM	VG	\$6.30	144	E-006-078	LUCKY LAGER	EX	\$21.15
72	B-024-001	ACME	EX	\$11.00	145	E-006-149	ROCK ISLAND	G	\$20.27
73	B-024-006	BURKHARDT	VG	\$6.30	146	E-009-004	BLATZ	VG	\$4.00
					147	E-009-004	BLATZ	VG	\$4.00

April 1997 JFO Auction-Closing May 14, 1997-Name:

- Send Bids To: John Stanley, PO Box 64, Chapel Hill, NC 27514-0064
 Rules: 1) No Phone Bidding & Only 1 Bid Per Item Allowed
 2) Openers Sold to Highest Bidder 3) Identical Bids, Earliest Bid Wins
 4) 7 Days to Return If Not Satisfied 5) Openers Shipped Upon Payment
 6) Results Shown Next JFO Issue 7) Shipping and Handling Extra

Conditions (CS): PO (Poor), G (Good), VG (Very Good), EX (Excellent), M (Mint)
 (UL-Unlisted in 96 Handbook, XX-Non-USA-Beer)

JFO # & Description from 1997 Handbook Of United States Beer Advertising Openers and Corkscrews

#	JFO #	Description	ST	CS	BID
001	A-001-012	K. & S. BRG. CO. CALL FOR PREMONA	IN	VG	
002	A-001-016	MONTANA BREWING CO. "MY FAVORITE"	MT	VG	
003	A-001-XX	PITZL'S FAMOUS BEER ESTEVAN, SASK. (CANADIAN)		VG	
004	A-001-XX	WHITE-CAP CAPS 'EM ALL (CANADIAN)		G	
005	A-002-XX	DICK DUTTON'S CHOP HOUSE 18144 WOODWARD AVE.		G	
006	A-003-034	E-Z MALT IT IS BETTER.		VG	
007	A-004-002	NATIONAL BEVERAGE CO. CHICAGO DRINK BUCK	IL	G	
008	A-004-013	DRINK AKRON BREWING COMPANY'S WHITE ROCK EXPORT	OH	G	
009	A-004-015	LEISY'S TEMP-BREW	IL	VG	
010	A-004-XX	"RICHARD'S SODA"		VG	
011	A-004-XX	CAFE' HIBSCHMAN SPRINGFIELD, OHIO	OH	VG	
012	A-004-XX	HILLSDALE BOTTLING WORKS HILLSDALE, MICH.	MI	G	
013	A-005-008	ASK FOR UTICA-CLUB PILSENER GINGER ALE	NY	VG	
014	A-005-015	IDEAL FOOD PRODUCTS CO. (REST IN HANDBOOK)	IA	G	
015	A-005-074	JAKE'S "MASTERBRU" "THE FLAVORS THERE" 1231 LAKE POINTE AVE. LENOX 5090 (MINIMUM BID \$20)		VG	
016	A-005-077	THE UNION MALT PRODUCTS CO. 1804 W. VLIET ST. PHONE WEST 0834 MILWAUKEE	WI	EX	
017	A-005-UL	M. & T. BEVERAGE CO. MALT & HOPS 2530 GD. RIVER GLENDAL 3321		G	
018	A-005-XX	CURO SODA WATER GINGER ALE OMAHA	NE	VG	
019	A-006-001	COMPT'S WEST END BRG. CO. (REST IN HANDBOOK)	NY	G	
020	A-007-004	FRONTENAC OLDE BREW (PROBABLY CANADIAN)		VG	
021	A-007-023	MARX MALT CO. 186 S. 4TH ST.-643 N. 4TH ST. 1195 W. BROAD ST. CALL MA. 8261		VG	
022	A-009-020	DRINK GALION OLD GERMAN BEER (VERY VERY WORN)	OH	PO	
023	A-012-001	BURGERMEISTER A TRULY FINE PALE BEER / SHRINE VICTORY CONVENTION JULY 1946 SAN FRANCISCO	CA	VG	
024	A-012-006	WHITE LABEL EAST INDIA ALE / REGAL SPELL IT BACKWARDS		VG	
025	A-020-018	ELFENBRAU BEER LACROSSE, WISCONSIN	WI	VG	
026	A-020-022	KOCHS / WILLIAMSPORT, PA. DIAL 9194	PA	EX	
027	A-021-002	BLATZ MILWAUKEE / BLATZ OLD HEIDELBERG	WI	VG	
028	A-021-035	WEST VIRGINIA EXTRA PALE PILSNER BEER	WV	EX	
029	A-021-086	PRIOR BEER TRINER CHICAGO, ILL.	IL	EX	
030	A-021-106	PRIMA AMERICA'S FINEST BEER WESTERN SALES CO. STERLING, COLO. EXCLUSIVE AGENTS COLO.-WYO. AND NEB		VG	
031	A-021-112	MANHATTAN BOTTLING WORKS MILWAUKEE GREEN RIVER FOR MIXING & DRINKING WEST 0206	WI	VG	

032	A-035-XX	COMPLIMENTS OF COPLAND BREWING CO. LIMITED TORONTO (CANADIAN)		VG	
033	A-035-XX	GAY-OLA IT'S BETTER TRADEMARK REG.		G	
034	B-001-05A	PITTSBURGH BREWING CO. (IN LOGO) TECH BEER (STEEL)	PA	G	
035	B-002-01A	DRINK BLATZ PRIVATE STOCK BEER MILWAUKEE (B IN 6 POINTED STAR) (STEEL)	WI	G	
036	B-002-030	THE JAMES HANLEY BR'G CO. PROV., R.I. THE STANDARD OF EXCELLENCE HANLEY'S PEERLESS ALE	RI	G	
037	B-002-033	OLD STYLE LAGER THE BEER WITH A SNAP TO IT	WI	VG	
038	B-002-036	WAGNER'S SIDNEY, O. BEER ALWAYS THE SAME (NO PAINT)	OH	VG	
039	B-003-001	PETER DOELGER FIRST PRIZE BOTTLED BEER EXPRESSLY FOR THE HOME "BEST BEER BREWED" (MINIMUM BID \$50) (BRASS)	NY	EX	
040	B-003-004	DRINK EDELWEISS BEER	IL	VG	
041	B-005-030	STORZ BR'G CO. OMAHA, NEB. (REST IN HANDBOOK)	NE	G	
042	B-013-018	JOHN GRAF CO. "THE BEST WHAT GIVES" / JAMAICA PALE DRY GINGER ALE	WI	EX	
043	B-013-065	LINSER'S AMERICAN MADE BEER	OH	VG	
044	B-014-046	DRINK YUENGLING'S FINE BEER	PA	EX	
045	B-018-208	ASK FOR PFAFF'S LAGER	MA	G	
046	B-018-211	KEY TO PITTSBURGH BREWING CO'S "TECH BEER"	PA	VG	
047	B-018-324	DRINK AMERICAN MAID BEER	PA	G	
048	B-021-044	KALAMAZOO BREWING CO. KALAMAZOO, MICH. CALL FOR THE BREW FROM KALAMAZOO	MI	G	
049	B-021-187	KEY TO THE NORTHAMPTON BREWING CO'S TRU-BLU BEER / THE BEER	PA	G	
050	B-021-462	DRINK AKRON BREWING COMPANY WHITE ROCK EXPORT	OH	G	
051	B-022-025	BURKHARDT'S AKRON, O.	OH	VG	
052	B-023-081	WHITE BANNER MALT EXTRACT / PREMIER DISTRIBUTING CO., ST. LOUIS	MO	G	
053	B-023-170	GOLDEN CREME MALT SUPREME		VG	
054	B-023-UL	BOULEVARD MALT SHOP 5308 FOOTHILL BLVD. OAKLAND, CALIF.	CA	EX	
055	B-024-035	WALTER BREWING CO. COLORADO & WISCONSIN / WALTER'S PILSENER BEER	WI	EX	
056	B-024-056	SALEM BEER "IT'S THE BEER"	OR	G	
057	B-024-105	MOORE & QUINN'S DIAMOND ALE	NY	VG	
058	B-027-01A	DRINK MILLER HIGH LIFE BEER MILWAUKEE (STEEL)	WI	VG	
059	B-033-001	SCHOENHOFEN'S EDELWEISS BEER	IL	G	
060	B-035-004	STORZ BEER / SAME	NE	M	
061	B-042-XX	DRINK "LONDON DRY" PALE GINGER ALE		G	
062	C-011-XX	WESTPHAL GINGER ALE-ROOT BEER PHONES EUCLID 252 FOREST 2337		VG	
063	C-012-004	CREMO BREWING CO., INC. NEW BRITAIN, CT. CREMO ALE AND LAGER	CT	VG	
064	C-012-163	THE FRANKLIN BREWING CO. BEN BREW BEER 100% GRAIN PRODUCT	OH	VG	
065	C-012-164	BROCKERT'S ALE / DY CONVENTION WORCESTER 1936	MA	VG	
066	C-012-XX	SCHILLE'S BOTTLED BEVERAGES COLUMBUS, O.	OH	VG	
067	C-013-110	STERLING BREWERS INC. EVANSVILLE, IND. STERLING STERLING BEER (BOTTLE)	IN	G	
068	C-013-150	RHEINGOLD EXTRA DRY	NY	VG	
069	C-013-XX	RESCH'S LONG BOTTLE PILSENER (CANADIAN ???)		VG	
070	C-013-XX	COUNTRY CLUB GINGER ALE/COUNTRY CLUB LIME AND LITHIA		M	
071	C-014-019	STORZ GOLD CREST BEER (CREST)	NE	EX	
072	C-019-001	CREMO ALE AND BEER	CT	VG	
073	C-020-010	THE WM. PETER BREWING CORP. / PETER BRAU ('THE W P B CO' IN CIRCLE)	NJ	VG	

074	C-022-002	RUPPERT (REST IN HANDBOOK)	NY	VG	
075	CBO-RND-3	GRILL BROS. CO. MAKERS EVANSVILLE, IND. / GRILL'S "LA PALMA" HAVANA CIGARS	IN	VG	
076	D-002-006	SCHLITZ / SAME	WI	VG	
077	D-003-010	BERGHOFF / DORTMUNDER	IN	EX	
078	D-004-006	LEISY'S / SAME (VAR (A) FLAT OPENER END)	IL	G	
079	D-005-002	BLATZ	WI	VG	
080	D-006-001	BRUCK'S (HOLE DRILLED IN END)	OH	G	
081	D-009-001	CHIEF OSHKOSH	WI	VG	
082	D-009-004	KINGSBURY	WI	VG	
083	D-009-008	OSHKOSH / RAHR BEER	WI	EX	
084	D-009-011	ZOLLER'S BEER / SAME	IA	VG	
085	D-009-019	MENOMINEE BEER / SAME	WI	G	
086	E-003-008	GRIESE DIECK BROS. ST. LOUIS LIGHT LAGER / SAME	MO	VG	
087	E-003-045	CALIFORNIA BRG. ASS'N. ACME BEER / SAME	CA	VG	
088	E-003-059	GOLDENROD BEER TASTES BETTER	NY	VG	
089	E-004-052	G. KRUEGER BRG. CO. NEWARK, N.J. (REST IN HANDBOOK)	NJ	VG	
090	E-004-XX	DUFFY'S DELICIOUS DRINKS / PHONE TABOR 6259 (SCREWDRIVER TIP)		EX	
091	E-005-010	LATROBE BREWING CO. ROLLING ROCK (REST IN HANDBOOK)	PA	EX	
092	E-006-211	PITTSBURGH BREWING COMPANY / IRON CITY PILSENER LAGER, FOX HUNT ALE	PA	VG	
093	E-008-058	NUT BROWN ALE LONDON STOUT / TEN-PENNY ALE MOOSEHEAD ALE (CANADIAN)		VG	
094	E-009-001	ANHEUSER-BUSCH ST. LOUIS MISSOURI. / SAME	MO	G	
095	E-009-060	MAIER BREWING CO. LOS ANGELES, CAL. / SAME	CA	G	
096	E-014-482	COLUMBIA BREWERIES KRAEUSENIZED / ALT HEIDELBERG LAGER BEER	WA	VG	
097	E-014-594	THE CONSUMERS BREWING COMPANY NEWARK, OHIO / OLDE TOWNE ALE-BEER	OH	VG	
098	E-014-XX	MISSION ORANGE / SAME		VG	
099	F-002-004	FREDERICK'S BREWING CO. THORNTON, ILL./VAN NESTOR BEER	IL	VG	
100	F-002-009	SOUTH BETHLEHEM BREWING CO. BETHLEHEM, PA/SUPREME BEER	PA	EX	
101	F-002-XX	CALIFORNIA BEVERAGE CO./DRINK ALL AMERICAN BEVERAGES	CA	VG	
102	F-004-UL	HYAN DRY GINGER ALE MADE GOOD-BY GINGER! A LANG PRODUCT (LANG BREWERY, BUFFALO, NY PROHIBITION DRINK)	NY	M	
103	F-005-XX	BLUE ANCHOR GINGER ALE / JOHN FRIEDRICH 5TH & RISING SUN AVE.	PA	VG	
104	F-006-081	THE MUESSEL BREWING CO. / PROMPT DELIVERY TO FAMILY TRADE BOTH PHONES.	IN	G	
105	F-006-XX	MANHATTAN PEPSIN GINGER ALE - PHONE WEST 206 - / MERELY A MATTER OF GOOD TASTE.	WI	G	
106	F-006-XX	(1) CASCADE GINGER ALE (2) DRINK SMILE		VG	
107	F-006-XX	UNION BOTTLING CO. CHATTANOOGA, TENN. / HOME BOTTLING SUPPLIES	TN	G	
108	G-009-012	ORTLIEB'S PREMIUM LAGER BEER (BLACK ON GREEN)	PA	VG	
109	G-009-021	STAR ALES & LAGER (WHITE ON RED)		VG	
110	G-009-079	PICKWICK ALE / SAME (WHITE ON GREEN)	MA	VG	
111	G-011-001	MUESSEL SILVER EDGE (MINIMUM BID \$60)	IN	EX	
112	H-002-156	NATIONAL BEVERAGE DISTRIBUTING CO. (REST IN HANDBOOK)	WI	EX	
113	H-004-002	DRINK PRIMA SPECIAL	IL	G	
114	H-007-009	ALWAYS SERVE POTOSI BEER PILSENER & EXPORT	WI	EX	
115	H-008-008	IROQUOIS INDIAN HEAD BEER (REST IN HANDBOOK)	NY	VG	
116	H-008-011	PABST BREWING COMPANY (REST IN HANDBOOK)	WI	EX	

Arber, William, (Barbara) 11162 Broadway St Alden, NY 14004-9515 (716) 681-4833
751 All Openers & Figurals

Archer, John 1818 Fordem Ave Apt 4 Madison, WI 53704-4651
619 Types "A", "B", & "P" and Other Wisconsin Openers

Armstrong, Steve PO Box 1938 Orofino, ID 83544-1938 (208) 476-0128
810 All Montana (Esp Kessler of Helena) & All Idaho (Esp Sunset of Wallace)

Ambjerg, Jens Ragnesminde Alle 36 2605 Brondby, Denmark (45) 43967126
802 Corkscrews

Atkinson, Murray, (Pam) 9096 E Bella Vista Ct Floral City, FL 34436-2401 (352) 637-6016
771 Older Openers of Any Category

Atkinson, Tom, (Gillian) 5 Old Long Plain Rd Amherst, MA 01002-9519 (413) 548-9608
641 Corkscrews

Bachmann, Kurt, (Debbie) 57883 Hanover Rd Washington, MI 48094-3083 (810) 677-1069
415 All Types, All Advertising, Figurals, Plastic, Wood, Steel

Bailey, John, (Marie) 206 Rustic Dr Crossett, AR 71635-4724 (501) 364-6339
621

Bailey II, Eddie, (Carol) 4408 NE Sunnybrook Ln Kansas City, MO 64117-1922 (816) 459-9607
729 All Types of Openers

Bamford, Ron, (Jerry) PO Box 3103 Pinedale, CA 93650-3103 (209) 439-5762
232 Corkscrews

Barr, David 3612 Riddle Ct Bridgewater, NJ 08807-5553 (908) 725-5083
801 Beer Openers

Barren, Mark 6141 Tachi Dr Newfane, NY 14108-9517 (716) 778-9724
406 NewYork State Openers

Bates, Mead, (Rosemarie) 23 Gardiner St Darien, CT 06820-5111 (203) 357-0499
416 Manufacturer of Bottle Openers (Cymba Inc)

Behnken, Ron, (Jan) 405 S Brewer St Manchester, IA 52057-2206 (319) 927-2116
585 Openers with Beer Advertising

Benjamin, Marc, (Pat) 167 Nixon Beach Rd Edenton, NC 27932-9447 (919) 482-2099
389 One Of Each Type Especially Figural Types

Berlin, Bronson 1701 Alta St San Luis Obispo, CA 93401-3004 (805) 541-0151
692 California & West Coast Beer Openers

Biehl, Larry, (Fran) 448 Crandon Ave Calumet City, IL 60409-2202 (708) 891-4269
202 "F" Type Beer Advertising Openers, Letter Openers and Beer Advertising Knives

Bird, Steve 3317 W Sevilla Cir Tampa, FL 33629-8319 (813) 248-4969
795 Beer Openers

Bittermann, John 621 Homestead Joliet, IL 60435-5105 (815) 725-7770
786 Illinois-All Types (Norm Jay)

-
- Bohle, Mylen, (Diane) 655 Ochoco Ave Prineville, OR 97754-1230 (541) 447-4295
767 All Corkscrews & All Bottle Openers
-
- Bolam, Bob, (Kathy) 58 Hillary Dr Rochester, NY 14624-5245 (716) 889-2561
652 Openers & Corkscrews
-
- Boller, Jack, (Alice) 7208 Green Meadow Dr Fort Worth, TX 76180-6712 (817) 281-5585
745 Openers & Corks
-
- Bolton, Fred, (Sue) 3015 Cadencia St Carlsbad, CA 92009-8309 (619) 942-5765
478 Type "E-14" Openers
-
- Bongiovanni, Robert, (Denise) 154 Springers Mill Rd Cape May Court House, NJ 08210-2039
709 Beer, Coca-Cola, Older Nude Figurals (609) 465-7959
-
- Braeuner, Raymond, (Jerine) 1520 Horine Rd Festus, MO 63028-1040 (314) 937-6805
195
-
- Breton, Donald, (Marilyn) 7076 Riddle Rd Lockport, NY 14094-9331 (716) 434-3089
772 Beer Openers, All Kinds of Openers, All Breweriana
-
- Britton, Dick, (Bonnie) 2902 Lacota Rd Waterford, MI 48328-3127 (810) 683-2134
528 Any Type of Opener that will Open a Can, Jar, Bottle, Etc,
Wall Mounts, Corkscrews, Must be US Made-"No" Figural Wall Mounts
-
- Broders, Ed, (Patricia) 10220 Westwood Ave Baton Rouge, LA 70809-3243 (504) 293-2373
675 K-Openers & Louisiana Openers E-Mail USBCLEAB@IBMMAIL.COM
-
- Bromm, Donald, (Ida) 3240 Hwy 32 Tekamah, NE 68061-5004 (402) 374-1632
398
-
- Brunner, William, (Jo Ann) 8773 W Mineral Point Rd Mount Horeb, WI 53572-1229 (608) 798-2793
502 Wall Mount Openers, M-29 & M-30 from Wisconsin
-
- Bull, Don, (Bonnie) 20 Fairway Dr Stamford, CT 06903-1422 (203) 968-1925
1 Corkscrews, Beer Advertising Letter Openers & Knives
-
- Burgart, Paul 52-A Samoset Ave Hull, MA 02045-2514 (617) 925-1057
749 Figural, Flats & Mass. Brewery Openers
-
- Burritt, Lew, (Millie) 125 Vogt Dr Belle Chase, LA 70037-2625 (504) 394-3567
805 Breweriana from Dixie Brewing Co (New Orleans)
-
- Buruss III, John 318 Lost Oak Dr Canyon Lake, TX 78133-5720 (210) 899-7241
822 Missouri & Texas Openers
-
- Byrne, Tom PO Box 937 Southampton, PA 18966-0937 (215) 953-9279
144 Beer A's & B's & Dairy Openers
-
- Calhoun, Michael, (Linda) 424 Joilet Rd Marquette Heights, IL 61554-1426 (309) 382-2378
824 Openers & Corkscrews All Types
-
- Call, Roland, (Norma) PO Box 424 Woodland, ME 04694-0424 (207) 427-6694
793 Beer Openers, Any Openers
-

Callies, Joel, (Kay) 41265 Peterson Ave North Branch, MN 55056-6823 (612) 583-2814
720 Minnesota, Wisconsin, & Montana Beer Advertising Openers

Campbell, Bob, (Elayne) 9790 N 80th Pl Scottsdale, AZ 85258-1743 (602) 443-3179
690 Beer Advertising Openers

Caraker, Mike, (Barbara) PO Box 1233 Elgin, IL 60121-1233 (847) 742-6165
682 Figural Bottle Openers & Elgin, ILL Openers

Cardone, Joe, (Mary) 917 Gainsborough Rd Dayton, OH 45420-3709 (937) 254-3018
4 Pabst Blue Ribbon Openers

Carlson, Brian 6938 Upper 5th St N Oakdale, MN 55128-6719 (612) 739-1608
530 Hamm's

Cartwright, John, (Cheryll) 950 Marlene St Apt B Ukiah, CA 95482-7446 (707) 463-0955
587 "A", "B" & "E" Openers (Beer & Soda) &
Anything from Golden West Brewing or Port Townsend Brewing Co's

Caton, Matthew, (Karen) 321 Tobin Rd Henrietta, NY 14467-9720 (716) 359-3845
722 Rochester, NY Openers Also Rochester Breweriana & US Crowns

Chalk, Jim, (Marguerite) 3049 Westminster Dr Saint Charles, MO 63301-0656 (314) 946-2392
653 "B" & "C" Type Openers

Clark, Dick, (Jackie) 8410 S Ave D Yuma, AZ 85364-8441 (520) 783-2243
733 Beer Openers, Signs, Mirrors

Cobbs, David, (Cindy) 4849 Grace Ave #202 North Olmsted, OH 44070-3765 (216) 734-7132
799

Cole, Les, (Coral) 16 Crawford St Mandurah Western Australia 6210 (09) 581-1970
780 Unusual Bottle Openers, All Types
E-Mail LESCO@GATEWAY.NET.AU

Collier, Wayne, (Jeanne) 526 48th St Sandusky, OH 44870-4924 (419) 627-0981
649 Figural Openers

Counciller, Dr Harry, (Carol) PO Box 66 Greensboro, IN 47344-0066 (317) 987-1282
345 Openers & Corkscrews, General

Cower, Gary, (Darlene) 144 Lovejoy Rd Harpursville, NY 13787-1832 (607) 693-2645
765 Any Advertising Openers

Cress, David, (Susan) 1816 Elizabeth St Janesville, WI 53545-2704 (608) 752-7262
204 All Openers - Unusual Shapes

Creuziger, Dick 1226 Grove Ave Racine, WI 53405-3043 (414) 633-9245
531 Pabst Openers & Corkscrews (& Pabst Breweriana)

Cross, Robert "Red", (Freda) 10851 N 108th Dr Sun City, AZ 85351-4042 (602) 977-5397
411 Bottle Openers & Toy Banks

Danziger, Herbert, (Camille) 550 Cherry Ct Birmingham, MI 48009-1459 (810) 646-9470
246 Corkscrews (E-Mail HKDCFP@OL.COM)

Darocy, Alex, (Karen) 26 Oak Rd Santa Cruz, CA 95060-1454 (408) 423-4199
5

Davidshofer, Don 1100 E Taylor St Bloomington, IL 61701-5561 (309) 827-5789
588 "E" Type Openers

Deachman, Gary PO Box 438 North Woodstock, NH 03262-0438 (603) 745-2347
91 B-1-2-3, M-1-2, NH Openers, Bottle Shaped, L-2-4-6

Deckert, Dale, (Florence) 4087 Lake Conway Woods Blvd Orlando, FL 32812-7975 (407) 859-1543
532 Figural Openers (Flat & Cast Iron)

Desrosiers, Michel 16315 Av Hebert Saint Hyacinthe, Quebec CANADA J2T-3W4 (514) 774-3200
817 Corkscrews
Work (514) 527-8821

Donoghue, John 171 Lewis St (C/O Lewis Street Exchange) Lynn, MA 01902-4834 (617) 595-3499
40 Anything that Opens a Can or a Bottle

Dubrul, Dave, (Danette) 88 Linden Ter Burlington, VT 05401-4928 (802) 864-2089
635 "H-8" & "M-3", Cans, Mini Beers & Enterprise Brewery of Fall River, Mass Items

Dummer, Duane, (Carol) 910 N Palmatory St Horicon, WI 53032-1011 (414) 485-3395
7 Figural Openers, Corkscrews, All Types of Interesting Openers

Dutcher, Mickey, (Ellie) 134 Cortland-McLean Rd Cortland, NY 13045-9373 (607) 838-3447
663 Cast Iron Figural Openers

Dye Jr, Ralph PO Box 178 McConnellsville, OH 43756-0178 (614) 962-4776
636 Slides

Earls, Daniel 1949 Madison Rd Cincinnati, OH 45206-1873 (513) 281-8850
783 A's & B's

Ellison, Dana, (Catherine) PO Box 298 Ludlow, VT 05149-0298 (802) 228-3196
763 All Advertising Openers

Emme, Sandra PO Box 1454 Upper Marlboro, MD 20773-1454 (301) 627-8207
738 Figural, Corkscrews, Washington DC Advertising Openers
E-Mail SE0085@EPFL2.EPFLBALTO.ORG

Engelbrecht, Ken, (Susan) 22 Rainey Rd Crawford, TX 76638-3317 (817) 486-2230
823 Advertising, Beer, or All Old Unusual or Unique Openers

Enloe, Glen, (Pattie) 805 Teepee Dr Independence, MO 64056-2146 (816) 796-9965
95 Cigar Box Openers & Beer Openers

Ennis, William, (Ilene) 12220 14th Dr SE Everett, WA 98208-5929 (206) 337-5068
250 Cigar Cutters, Corkscrews, Openers (Beer & Soda)

Eyer, Lloyd, (Marjorie) 220 S Main St West Manchester, OH 45382-0152 (513) 678-5231
788 Cast Iron Figural Bottle Openers

Feisel, Lyle, (Dorothy) 977 Powderhouse Rd Binghamton, NY 13903-9307 (607) 723-4273
412 Beer Advertising Openers

Ferguson, John, (Denise) 3305 5 Points Rd Indianapolis, IN 46239-9574 (317) 356-3130
814 All Indianapolis Breweriana

Ford, Jack 5351 Boyd Ave Oakland, CA 94618-1111 (510) 655-5393
8 A-Types & Rainier Brewing & Hawaiian Brewing

Fossette, John, (Mandie) 2549 6th Ave Sacramento, CA 95818-3905 (916) 456-9607
723 Type "A" Openers

Fuerst, Norma, (Tom) 11 Oak Valley Rd Bloomington, IL 61704-7438 (309) 829-6192
498 "Schlitz" Openers

Gach, Frank 8709 Allenswood Rd Randallstown, MD 21133-4109 (410) 655-1518
379 Openers, Labels, Milk Bottles

Gallagher, Tim 516 Prospect St Torrington, CT 06790-4949 (860) 496-8204
792 Advertising Bottle & Can Openers-Plain Can Openers

Gausepohl, David 3488 Ridgewood Dr Erlanger, KY 41018-2887 (606) 371-4415
604 Kentucky Micros & Midwest Breweries (Beer Only)

Gauvin, Paul, (Gail) 24 Strawberry Ln Manchester, CT 06040-6930 (860) 646-9722
333 Connecticut and New England Openers & Corkscrews (Beer & Soda)

Gentle, George 510 W 110th St New York, NY 10025-2079 (212) 749-7142
534 Brewery Tokens & Medals, Openers (NY,NJ,PA)

Gilliland, Richard, (Patricia) 3920 Weyburn Dr Fort Worth, TX 76109-5036 (817) 923-5580
301 Texas & Iowa Brewery Openers

Goff, John, (June) 577 Brookhaven Ct Kirkwood, MO 63122-3003 (314) 966-3211
192 General

Goode, Dick 16940 Bay St Apt 507N Jupiter, FL 33477-1205 (407) 747-6326
624 Corkscrews

Gooden, Charlie, (Linda) 25101 N Watkinson Rd Acampo, CA 95220-9733 (209) 334-6733
347 Flat Figurals & Older Openers

Gormally, Joseph, (Anna) 1819 W 25th St Sioux City, IA 51103-1707 (712) 252-2483
716 All Openers

Gormally, William, (Phyllis) 100 Nelson Place Westfield, NJ 07090-4035 (908) 233-8867
605 U.S. Openers, Esp "E" Types & "I-7" Types

Goss, Janet, (John) 804 Phoenix Ave Trlr 4W Helena, MT 59601-0856 (406) 442-2390
724 M-3, M-1, G-9, Etc

Graff, Fil, (Robbie) 10111 Lincoln Way W Saint Thomas, PA 17252-9513 (717) 369-3577
401 One Of A Type

Gregg, Eldon, (Carol) 1714 Henry Dr Hays, KS 67601-2659 (913) 628-1595
348

Gregory, Bill, (Carolyn Saxton) 851 N Fair Oaks Oak Park, IL 60302-1546 (708) 386-3340
256 Chicago Area Breweries, Esp. Schoenhofen/Edelweiss

Grignon, Jean, (Louise) 47 Chemin Du Theatre CP 159 Eastman, Quebec CANADA
JOE 1PO (514) 297-3740

592 Corkscrews & Openers

Gross, Donald, (Christina) 1241 Canon Way Westminster, MD 21157-5762 (410) 848-6160
480 Figural (A/R) Any Advertising

Gruver, Tim, (Tonie) 129 Oakdale Dr Zelienople, PA 16063-9309 (412) 452-0196
643 Old Beer Openers

Haarberg, Delbert, (Beverly) 15562 El Capitan Way Delhi, CA 95315-9708 (209) 634-8096
10 All Types of Openers

Hall, John 2562 Hill Ct Sebring, FL 33872-4232 (941) 385-2592
666 Pennsylvania Beer Openers ("E" Types Esp)

Halverson, Keith, (Anne) 1528 W 21st St Merced, CA 95340-3430 (209) 723-1738
625 All Openers, Mainly "C"s & "E"s

Hanold, Bill, (Karen) RR 13 Box 36B Bloomington, IL 61704-8962 (309) 828-9252
651 All Types

Hansen, Harvey, (Jo Ann) 2300 Jefferson St Two Rivers, WI 54241-2208 (414) 794-7026
258 Openers-Beer & Coca-Cola

Hanson, Arthur, (Marge) 3028 Piedmont Ave Duluth, MN 55811-2838 (218) 727-1172
490 All Openers & Old Beer Bottles

Hanson, Ray, (Pat) 2817 Grand Oak Dr Garland, TX 75044-7859 (214) 530-0400
E-Mail RFHANSON@METRONET.COM
606 "A" & "B" Openers, Corkscrews

Harding, Russ 2665 Tamora Way Colorado Springs, CO 80919-3570 (719) 599-3378
208

Haydock, Herbert, (Helen) 1660 2nd Ave S Wisconsin Rapids, WI 54494-4705 (715) 423-8995
13 Openers & Corkscrews, All Breweriana

Hedges, Robert, (Leticia) 934 W Woodcrest St Bloomington, CA 92316-1534 (909) 875-3786
748 All Beer Advertising Openers & Collectibles

Helft, Arthur, (Roberta) 245 Maple St Englewood, NJ 07631-3704 (201) 568-2462
807 Antique & Unusual

Hibbeler, Ollie, (Shirley) 298 Highline Dr Lake Ozark, MO 65049-8924 (573) 365-3875
149 Missouri/Styles, Fishing Lures with Beer Advertising

Hoesch, Kenny, (Ruby) PO Box 299 Zeeland, MI 49464-0299 (616) 772-1683
725 Cigar Box Openers

Hoffman, Ben, (Cornelia) 213 Simmons Rd Perkiomenville, PA 18074-9587 (610) 287-8243
261 Pennsylvania & East Coast Openers & Corkscrews

Hoffman, David, (Jami) 929 W Broad St Williamstown, PA 17098-9501 (717) 647-7106
760 Beer Advertising Openers

-
- Hollinger, Jim 11421 Christensen Ct Burnsville, MN 55337-1147 (612) 895-0968
349 Minnesota Brewery Openers
-
- Horn, Harry, (Rose Mary) 3113 Smoky Ct Sacramento, CA 95826-4147 (916) 362-3590
476 Openers
-
- Horstmeyer, A L "Buzz", (Lucille) 94 Via La Cumbre San Rafael, CA 94904-1345 (415) 461-1098
577 Figural, Cap Lifters & Can Piercers with Beer & Malt Beverage Logos
-
- Hufford, Terry, (Jan) 7147 Parkview Ave Falls Church, VA 22042-1615 (703) 573-1621
512 Beer Advertising Openers - General
-
- Huhers, Harley, (Cindy) RR3 Box 109 Harrison, SD 57344-5000 (605) 243-2260
774 Soft Drink Openers, Winchester & Keen Cutter
-
- Hupp, Jim, (Anita) 6949 Hyde Park Dr San Diego, CA 92119-2208 (619) 460-6478
403 Beer, Soft Drinks, Hotels-States & World
-
- Hurwitz, Edward, (Margie) 426 Howard St Northboro, MA 01532-1031 (508) 393-9821
806 Figural/Whimsical Openers
-
- Jantos, Carl, (Ruth) 7025 Kevin Dr Bethel Park, PA 15102-3913 (412) 833-4866
110 Western PA Openers
-
- Jarrell, Roger, (Janice) 1500 Sedwick Rd Durham, NC 27713-2626 (919) 544-7787
538 West Virginia, Texas, & Southern Openers & Corkscrews
-
- Jarrell, Taylor 1500 Sedwick Rd Durham, NC 27713-2626 (919) 544-7787
700 West Virginia, Texas, & Southern Openers & Corkscrews
-
- Jay, Norm, (Judy) 839 James Ct Wheaton, IL 60187-6344 (630) 690-1565
181 All Openers (Except "I"s & "E"s) & Corkscrews
-
- Johnson, Arthur, (Eileen) 155 Hartford Ave E Mendon, MA 01756-1119 (508) 473-2780
213 "M-3" "Slide-Out" Openers & "M-73" "Slide-Out" Opener/Corkscrews, C-1s & C-2s
-
- Johnson, Tom, (Betty) 212 2nd St Jackson, MN 56143-1638 (507) 847-2828
660 Bottle - Can - Jar Openers (have 5000)
-
- Jones, Odis, (Janet) 2946 W 7 St Jacksonville, FL 32254-1908 (904) 695-0643
520 All Kinds
-
- Kaye, Ed, (Eileen) 7077 Cedarhurst Dr Fort Myers, FL 33919-6703 (941) 590-3068
11 Type "A-9" Openers (Baseball Players), Beer & Non-Beer
-
- Keown, Vic, (Mary Ann) 10547 Mert St Saint Ann, MO 63074-3433 (314) 428-6343
321 Missouri Openers, "M-3"s & "M-73"s & "L-1"s
-
- Kimmons, Mike, (Jan) 3801 Elledge Dr Roeland Park, KS 66205-1353 (913) 236-5441
539 Kansas City Pre-Pro Breweriana, Esp Openers
-
- King, Charles, (Karen) 32 Amsterdam Ave Glenmont, NY 12077-3630 (518) 767-2005
727 Albany, Troy, Schenectady, Cohoes, Amsterdam, Hudson, NY Breweries
-
- King, Dennis, (Laura) PO Box 1141 Lake Placid, NY 12946-1141 (518) 523-2762
627
-

-
- Kirkpatrick, Charles, (Janice) 295 Leyden St Denver, CO 80220-5951 (303) 298-9625
267 Corkscrews
-
- Klaassen, Kenneth 2412 E T Ave Kalamazoo, MI 49002-7538 (616) 323-3192
382 Corkscrews
-
- Knapp, Joe 211-A Berbro Ave Upper Darby, PA 19082-2014 (610) 352-5055
703 Beer Advertising Openers
-
- Koch, Bob, (Mickey) 1510 Ariana St Lot 450 Lakeland, FL 33803-6930 (941) 682-8145
269 General - Just a Little of Everything
-
- Kogut, Harold, (Dorothy) 7675 8th St N Saint Petersburg, FL 33702-5229 (813) 522-3971
113 Bottle Openers, Corkscrews, Can Openers-Any Kind
-
- Kopp, Richard, (Marty) 14419 Woodcrest Dr Rockville, MD 20853-2336 (301) 460-4272
753 Beer Advertising Including Openers
-
- Kost, Tony 4027 N LeClaire Ave Chicago, IL 60641-1435 (773) 736-2746
721 All Beer Advertising Openers (Esp. Chicago Brands)
-
- Kovarik, Lou, (Rosemary) 12646 Alswell Ln Saint Louis, MO 63128-2509 (314) 842-2446
493 Brewery Bottle/Can Openers & Corkscrews
-
- Kraft, Frank, (Judy) 1021 E Mulberry St Mankato, MN 56001-4707 (507) 388-6042
371 Minnesota Openers
-
- Kroll, Victor, (Jackie) 3451 Nighthawk Ct # 433 Punta Gorda, FL 33950-6675 (941) 575-0303
433 Beer, Whiskey, Soda & Tobacco Advertising
-
- Kutska, John, (Paulette) 4334 Du Bois Blvd Brookfield, IL 60513-2222 (708) 485-1961
514 "A"s, "B"s, "F"s, Self Advertising Openers, Misc Similar Items
-
- Landino, Arthur 88 Centerbrook Rd Hamden, CT 06518-3400 (203) 281-1085
216 New England Openers
-
- Lange, Dick, (Elaine) 307 Jefferson Dr Mount Shasta, CA 96067-9480 (916) 926-3684
494 General
-
- Laraway, Bill, (Diane) 627 Kenwood Ave Delmar, NY 12054-1607 (518) 439-2739
271 Albany & Troy NY & Schaefer Openers
-
- Larson, Don, (Jackie) 213 N Campbell Ave Beloit, KS 67420-2427 (913) 738-3197
759 Beer & Pop Openers, Beer Trays
-
- Lendy, David 1296 Seabury Cir Carol Stream, IL 60188-6027 (630) 289-5692
804 Beer Advertising Openers
-
- Levesque, Roger, (Christine) PO Box 826 South Windsor, CT 06074-0826 (203) 644-9582
383 Micro Openers
-
- Levine, Bernard 2606 Kenway Ln Bowie, MD 20715-2636 (301) 262-1822
808 Corkscrews and Other Hand-Held Wine Bottle Cork Extractors
-
- Lewis, Sam, (Carol) 113 Rockwood Dr Pittsburgh, PA 15238-2333 (412) 963-0827
435 Cigar Box Openers, Figural Openers
-

Little, Jack, (Helena) 9531 W Sandstone Dr Sun City, AZ 85351-2054 (602) 974-5353
809 Foreign, Hotels, Motels, Inns

Lorett, Mike, (Bobbie) PO Box 28 Conifer, CO 80433-0028 (303) 838-4292
384 Corkscrews

Lorsung, Jan, (Lee) 10549 Sheridan Ave S Minneapolis, MN 55431-3461 (612) 888-6379
794 All Types

Lothridge, Thomas 31 Pearl St Bainbridge, NY 13733-1027 (607) 967-8575
62 All Openers and Corkscrews

Love, George, (Martha) 4301 Forest Plaza Dr Hixson, TN 37343-5017 (423) 877-6006
743 Tennessee Openers

Love, Jack, (Dorothy) 1100 S State Road 37 Unit 80 Elwood, IN 46036-8986 (317) 552-2369
218 Bottle Openers, Letter Openers, Lighters, & Miniature Race Cars

Loy, Greg, (Karen) 316 Lynwood Ave Ottumwa, IA 52501-4938 (515) 682-6779
752 Openers, Trays, Mugs

Luchsinger, Paul, (Anne) 1126 Wishart Pl Hermitage, PA 16148-4410 (412) 346-2331
449 Corkscrews-U. S. Patents & Syroco

Lyon, Clayton, (Bernice) 3800 Bradford St SPC 74 La Verne, CA 91750-3143 (909) 593-6462
580 Corkscrews & Openers

Lyons, Tom, (Janet) 321 Valley Court Rd Lutherville, MD 21093-6413 (410) 296-0387
274 Figural Openers

Mackler, Larry 1826 E Melrose St Walla Walla, WA 99362-1442 (509) 525-6799
731 Northwest U.S. Beer Openers and "E" Types Work (509) 529-7000

Mahood, Jeff 303 W Elmwood Ave Mechanicsburg, PA 17055-4126 (717) 766-8055
816 All Types of Openers (Including Beer & Soda Advertising)

Mandzuk, Phil 340 Morley Ave Winnipeg, Manitoba CANADA R3L 0Y5 (204) 452-1293
275 Canadian Breweriana, Canadian Etched Glasses

Matney, Kent, (Sue) PO Box 287 New Paris, IN 46553-0287 (219) 831-4947
819 Beer Bottle Openers

Maxwell, H James 1050 W Blue Ridge Blvd Kansas City, MO 64145-1216 (816) 942-6300
677 Kansas City, MO Brewery Items

Mayberry, A A, (Lucy) 1615 16th St Auburn, NE 68305-1724 (402) 274-4448
629

Mayer, George, (Terry) 10 Library St Lily Dale, NY 14752-9999
796

McCarthy, Mark, (Bonnie) 5 Lenox Ct Lemont, IL 60439-6138
542

McDermid, Don, (Tammy) 716 Kentucky St Deer Lodge, MT 59722-1936 (406) 846-2660
686 Montana Openers & Corkscrews

McLellan, Gerry 641 Waverly St Framingham, MA 01702-6946 (508) 872-3078
812 All Openers

McNary, Robert 5301 10th Ave SW Naples, FL 34119-3935 (941) 353-8458
712 Beer Advertising Openers & Some Corkscrews

Milano, Hale, (Linda) 506 Spring House Rd Camp Hill, PA 17011-1454 (717) 737-5067
655 "I-7"s and Anything from the Leo Ebert Brewery of Ironton, Ohio

Miller, Darwin, (Otistean) 32 La Canada Way Hot Springs Village, AR 71909-2658 (501) 922-1615
668 All Bottle & Can Openers

Miller, Elliott 1820 Broadway St Denison, IA 51442-2120 (712) 263-5741
815 General

Miller, Scott, (Marilyn) 2136 Crosscreek Ave Simi Valley, CA 93063-5000 (805) 583-2856
782 California Beer Openers & Types "B-14", "H-8" and "I-7"

Miller, Stephen, (Laura) 168 E Schreyer Pl Columbus, OH 43214-2725 (614) 263-1410
798

Mlady, John, (Jackie) 1506 S 25th St Omaha, NE 68105-2611 (402) 345-7909
732 Nebraska Openers, Corkscrews and Breweriana

Morrison, Bruce, (Julie) 335 Gallihar Ln Greeneville, TN 37743-3409 (615) 639-0897
735

Mosrie, Fred 12710 Epping Ter Silver Spring, MD 20906-3866 (301) 929-0870
562 Coca-Cola Openers

Moter, Lawrence 10149 Michaels Rd Woodford, VA 22580-2500 (804) 448-3928
450 "E"s & Certain "F"s

Muma, William, (Sherron) 8116 Rattan Way Citrus Heights, CA 95621-1031 (916) 723-1461
279

Nash, Abby 172 Bush Ln Ithaca, NY 14850-1008 (607) 266-0690
685 Bakelite, Breweriana, Corkscrews

Neas, Paul, (Alma) 4953 Vera Cruz Rd Center Valley, PA 18034-9734 (610) 797-5759
581 All Openers

Newmark, Michael, (Gayle) 549 Buxton Ave West Hempstead, NY 11552-2832 (516) 485-0509
611 Openers (Beer Only)-Glasses & Cans

Nittinger, Russ 5225 Chemin De Vie NE Atlanta, GA 30342-2547 (404) 256-3216
803

O'Leary, Fred, (Sue) 6149 Shadygrove Dr Cupertino, CA 95014-4645 (408) 996-3101
791 Corkscrews

Offchinik, Robert 504 Florida Pky Kissimmee, FL 34743-7510 (407) 348-7254
746 All Openers & Corkscrews & Corkscrew Knives

Olson, Floyd, (Dale Louise) 18226 182nd St Tonganoxie, KS 66086-5143 (913) 724-3020
741 Acetylene Tank Wrenches

Orth, Dennis, (Mary) 4210 Lake 5 Dr Colgate, WI 53017-9764 (414) 628-3933
223

Osborn, Jim, (Mary Joe) 1006 E Kerr Ave Apt 105 Urbana, IL 61802-2076 (217) 367-9614
126 Corkscrews, A-Types & Unusual, Also Illinois Breweries (Rejoin-Norm Jay)

Ostrow, Ken 58 Cedar St Newton, MA 02159-1113 (617) 527-4705
800 New England Paper Label Bottles & Breweriana Dealer (John Stanley)

Owen, Steve, (Candy) 1175 Elkins Lake Huntsville, TX 77340-7330
477 "O-5" Wall Mount Openers

Paczkowski, Joe, (Rita) 317 Medford Lakes Rd Tabernacle, NJ 08088-9018 (609) 268-9390
719 Eastern Pennsylvania, NYC & New Jersey-"H-2", "H-3", "I-7", "E" & "C" Types

Paradi, Joseph, (Monika) 670 Meadow Wood Rd Mississauga, Ontario CANADA L5J 2S6
451 Corkscrews, Barscrews, Champagne Taps, Etc (905) 823-3754

Parker, Vernon, (Louise) 316 Ravine Park Dr Lake Forest, IL 60045-1341 (847) 234-1277
787 Corkscrews

Parks, Steven, (Lisa) 404 SW 138th St Burien, WA 98166-1350 (206) 244-6646
711 Misc Openers - All M-29s

Pattie, Bill, (Lyla) 37050 SE 89th St Snoqualmie, WA 98065-9786 (206) 888-2495
486 All Montana Beer & Advertising Openers & "One-Of-AType"

Patton, John, (Eileen) 701 Montara Rd Spc 208 Barstow, CA 92311-5732 (619) 252-4920
776 "C"- "D"- "E"- "I"- "J"

Pearis, Gibson, (Dana) 315 Berry Belton, MO 64012-1977 (816) 331-2285
726 Figural Bottle Openers

Pedersen, Jim 4176 Cawthra Rd Mississauga, Ontario CANADA L4Z-1A1
813

Peters, Roger, (Bette) 20522 Hudson St Burney, CA 96013-4187 (916) 335-5003
69 Openers & Corkscrews

Petro Jr, Andrew, (Linda) 39 Smithfield Vlg East Stroudsburg, PA 18301-9054 (717) 421-4486
750 Beer Openers

Pinney, Dave, (Edith Richman) 1207 Ahlrich Ave Encinitas, CA 92024-4025 (619) 753-8151
811 Beer & Soda Metal Openers

Pitsch, Ralph, (Ruby) 2814 Wedemeyer St Sheboygan, WI 53081-6738 (414) 458-2525
754 Beer & Novelty Openers

Pugh, Sass PO Box 380 Miller, SD 57362-0380 (605) 853-3835
72 All Openers & Corkscrews

Queen, Harold, (Ida "Boots") 1001 Centre Ave Jim Thorpe, PA 18229-1015 (717) 325-2612
572 All PA Openers, "C"s, "M-3"s, "I-7"s, "Q"s, "M-19"s, Micro Openers, "A-21" NB

Quilliam, Mike, (Julie), 65 Maria Dr Great Falls, MT 59404-3769 (406) 761-1953
713 Montana Beer Openers

-
- Ransom, John, (Norma) PO Box 97 Osborn, MO 64474-0097 (816) 675-2375
734 Openers, Labels, Caps, Signs, Trays
-
- Raposo, Michael, (Leigh) 23 Bonny Eagle Pond Rd Standish, ME 04084-6254 (207) 727-4052
506
-
- Readel, Jerry, (Barbara) 15622 N 57th Ave Glendale, AZ 85306-3010 (602) 439-1788
670 All Types of Bottle/Beer Openers
-
- Redl, Alex, (Peggy) 1009 Elk St Beatrice, NE 68310-3026 (402) 223-2554
470 Openers From Nebraska & Ohio, Esp. Akron, OH
-
- Rees, Carl, (Pat) 11366 N Rio Vista Rd Pocatello, ID 83202-5315 (208) 237-2464
358 Beer & Soda Openers
-
- Reynolds, Charlie, (Judy) 2836 Monroe St Falls Church, VA 22042-2007 (703) 533-1322
563 Figural Openers, Standing Figural Wall Mounts & Loops
-
- Reynolds, Susan 2117 21st Ave S Birmingham, AL 35223-1716 (205) 871-4348
695 "A"s & "B"s, Some Others - Doesn't Need to be Beer Work (800) 366-4712
-
- Ribbke, Harry, (Lorna) 3731 Crestview Dr Cottage Grove, WI 53527-9533 (608) 839-5449
640 All Types
-
- Ricicki, Tony, (Pat) 9 Laird Ter Somerset, NJ 08873-5013 (908) 873-0301
671 "I-7", "I-15", "J-4"
-
- Rivers, David 2755 N Forest Rd Apt G Getzville, NY 14068-1502 (716) 636-0899
781 Syracuse New York Openers & Breweriana Only
-
- Roche, John 2815 N 58th Scottsdale, AZ 85257-1009 (602) 949-9173
777 All Types, especially NY
-
- Roe, Lehr, (Joan) 160 Penfield St Dundee, MI 48131-1129 (313) 529-2359
359 Corkscrews
-
- Rose, Michael 1201 First Ave Green Acres Andalusia, AL 36420-5103 (334) 222-7814
797 Starr "X" Wall-Mount Soda by Brown Mfg. Co. Newport News, VA. (Antique Trader)
-
- Ruckstuhl, Jon, (Lorraine) 1646 Treehouse Ln N Roanoke, TX 76262-8947 (817) 337-0101
495 Pre-Pro Paper Label Bottles, "E" Openers, Matchbooks
-
- Santen, Art, (Dorothy) 6126 McPherson Ave Saint Louis, MO 63112-1104 (314) 863-6798
158 All-Openers, Self Opening Porcelain Stoppers, Opening Instruction Cans & Misc
-
- Schaefer, Ed, (Kelly) 366 Bassett Rd Bay Village, OH 44140-1813 (216) 871-0449
691 Jamestown, Chautauqua, Schaefer and Cleveland Beer Openers
-
- Schele, Jerry, (Kathleen) 3744 Pineview Dr Fort Wayne, IN 46815-4724 (219) 483-6350
16 U.S. Openers - All Types
-
- Schiffers, George 882 Huron Ave San Francisco, CA 94112-4038
442 Bottle Openers
-
- Schmeisser, Ray, (Fran) RR 3 Box 194 E Caldwell, TX 77836-9512 (409) 272-2008
582 "E" Type Openers (Mainly)
-

Schmitt Jr, Conrad, (Kay) 406 Eastbrook Ln O Fallon, MO 63366-1829 (314) 272-2814
508 Old & Unusual Figural Openers

Schuldheisz, Lawrence, (Mertie) 851 Doss Ave Orlando, FL 32809-5880 (407) 855-7731
688 All Bottle & Can Openers

Schwab, Ed 101 Cabin Ct Mechanicsville, VA 23116-9409 (804) 746-1924
338 Beer Openers, Bottle Caps (Beer and Soda)

Schweigl, Leonard, (Dolores) 2350 S 23rd St Lot 1054 Manitowoc, WI 54220-6300 (414) 684-3707
630

Schwimmer, Mike, (Ann) 325 E Blodgett Ave Lake Bluff, IL 60044-2112 (847) 295-1901
680 Cigar Box Openers, Other Cigar Advertisement: Cutters, Mirrors, Trays, Etc

Sell, Bill, (Althea) 457 Holly Ave Saint Paul, MN 55102-2205 (612) 227-9299
443 Corkscrews

Sherk, Lawrence PO Box 98094 1000 Gerrard St E Toronto, Ontario CANADA M4M 3L9
175 All Canadian Breweriana Including Openers (416) 465-3386

Sherman, Don, (Ruth) 438 Mavis Dr Los Angeles, CA 90065-5054 (213) 225-7870
18 "A" & "B" Type Openers & Corkscrews

Sherman, Scott, (Cindy) W5268 Quarry Rd Appleton, WI 54915-8330 (414) 954-1168
757 Metal Beer Advertising Openers

Shoulter, Jim 9 Shawnee Woods Rd Wheeling, WV 26003-1746
499 Glasses-Mugs-Steins-Signs-Trays

Skelton, Allan, (Karen) 1055 86th Ave W Duluth, MN 55808-1414 (218) 626-2480
672 Type "A" & "B" Openers

Smith, Henry, (Linda) 5459 Woodhaven Dr Cincinnati, OH 45248-5113 (513) 451-2641
410 Cincinnati & Hamilton OH, Covington & Newport KY, All Breweriana

Sommer, Robert, (Janet) 413 Scott Dr Silver Spring, MD 20904-1065 (301) 384-5456
678 Drink, Hotel, Beer Advertising Can & Bottle Openers

Sourapas, Steve, (Dona) 1212 9th Ave W Unit 2 Seattle, WA 98119-3445 (206) 282-9922
574 Pre-1930 Hires Root Beer Memorabilia, M-2 Hires Root Beer Opener

Staebell, Michael, (Harriet) 650 Knapp Rd Akron, NY 14001-9206 (716) 542-2577
790 All Types of Openers

Stahly, Bob, (Marge) 1508 E Bridge St Streator, IL 61364-3114 (815) 672-4323
176 Wall Mounts

Staley, Tom PO Box 713 Micanopy, FL 32667-0713 (904) 466-3801
755 Corkscrews-General

Stanley, John, (Pat) 3712 Sunningdale Way Durham, NC 27707-5684 (919) 419-1546
339 "A" & "B" Types, Southern US, Hoster-Columbus, & Fink Openers & Corkscrews

Stawarz, Henry, (Marge) RR 2 Box 131 Rushville, IL 62681-9637 (217) 322-6834
184 Openers

-
- Steinke, Tom, (Sharon) 155 S Charles St Waukesha, WI 53186-6201 (414) 542-0252
667 All Openers
-
- Stork, Jim, (Ruth) 7504 Parliament Ct West Chester, OH 45069-2325 (513) 755-8670
617 Ohio & Figurals
-
- Summers, Stan, (Pat) 5880 N Livernois Rd Rochester, MI 48306-2538 (810) 651-6886
375 Michigan Stuff
-
- Sutton, Lou, (Rita) PO Box 1112 Mechanicsville, VA 23111-6112 (804) 730-0449
661 Virginia Beer Openers
-
- Swanstone Jr, Donald, (Julie) RID Box 1D 601 Main St Dearborn, MO 64439-9111 (816) 992-8819
769 Corkscrews
-
- Szwajkos, Paul, (Mary) 4008 Arrowhead Ln Liverpool, NY 13090-2822 (315) 652-7933
708
-
- Teggatz, Bonnie 100 1st Ave NE Apt 704 Cedar Rapids, IA 52401-1119 (319) 368-8348
626 Kitchen Openers
-
- Tewksbury, Ralph, (Linda) 84 Wildwood Dr Parkersburg, WV 26101-9771 (304) 863-3627
515 Beer Openers
-
- Thelen, David, (Karen) 934 Stone Mill Run Lawrenceville, GA 30245-5570 (404) 962-6153
696 All
-
- Thompson, Thom, (Frances) 123 Shaw Ave Versailles, KY 40383-1157 (606) 873-8787
363 Coca-Cola & Lexington (KY) Brewery (Dixie Beer) Openers & Corkscrews
Work (606) 255-2727
-
- Tozer, L V 4026 400th Ave E Oak Harbor, WA 98277-3022 (360) 675-4575
789 Can Tappers/Bottle Openers & Advertsing Bottle Openers
-
- Vandemark, Bud, (Betty) 3830 Cambria-Gomer Elida, OH 45807-9792 (419) 642-3281
785 Any Advertising Openers
-
- Vifquain, Brad, (Lori) PO Box 30244 Mesa, AZ 85275-0244 (602) 807-3609
500 Has 4 Breweriana Auctions Per Year
-
- Virostek, Donald 3746 Margate Rd Pittsburgh, PA 15221-3914 (412) 241-5894
632 "M-3"s & Tire Ashtrays
-
- Vlossak, John, (Doris) 1044 E Eldorado St Appleton, WI 54911-5568 (414) 739-2789
547 Corkscrews Only, Esp. Williamsons
-
- Vollrath, Verne, (Laverne) 218 S Lexington Dr Janesville, WI 53545-4322 (608) 752-5708
162 U.S. Beer & Malt Openers & Corkscrews
-
- Wagner, Paul, (Stella) 944 Hale St Pottstown, PA 19464-4034 (610) 326-5419
227 PA Beer Openers & One-Of-Each-Type Openers
-
- Waldo, Harriet HC 3 Box 1037 Rocky Mount, MO 65072-9054 (573) 392-3186
228 "H"s and Missouri
-
- Walker, Don, (Marcia) 2294 Terrace Dr N Clearwater, FL 34625-2743 (813) 799-4253
559 Corkscrews
-

Watkevich, Frank 306 Cottage St Athol, MA 01331-2950 (508) 249-9409
364 Can Openers and Beer Bottle Openers

Weatherhead, John, (Illona) 5224 S Guerin Pass New Berlin, WI 53151-8139 (414) 425-8810
820 Wooden Bottle Shaped Openers (L-4s)

Westall, Jack, (Wanda) 5945 Shallow Creek Dr Milford, OH 45150-1524 (513) 248-1127
728 All Beer Opener Types (Except Wall)

Whelan, Don, (Cora) 1200 W Maple St Savannah, MO 64485-1857 (816) 324-3603
583 Schlitz Openers, One-Of-Each-Type and "E-4"s

White, Herb, (Polly) 3216 Jamaica Blvd S Lake Havasu City, AZ 86406-6207 (520) 680-7762
618 "E-11" & "E-14" Openers
E-Mail WIKIEUP@JUNO.COM

Wilcox, Darwin, (Ellen) 8495 Croix Trl Roscoe, IL 61073-9158 (815) 623-2255
296 Advertising Openers

Williams, Don, (Diane) 1022 Diablo Rd Danville, CA 94526-1924 (510) 831-1783
488 General Breweriana

Williams, Scott, (Ursula) 11601 Tissel Hollow Rd Fairfax, IA 52228-9789 (319) 846-2919
365 Iowa, "E-4", "E-14", "I-7", "I-17", Knives & 1 of Each Type Openers

Willing, Kenneth, (Betty) 3841 W Bass Creek Rd Beloit, WI 53511-9022 (608) 752-1387
510 Wisconsin Openers & Trays

Wisconsin State Historical Society 816 State St Madison, WI 53706-1488
326

Witulski, Barney 224 W Westplains Rd Gretna, NE 68028-4408 (402) 332-3764
676 All Beer Openers

Wulff, Rod 623 Fern Way Eldersburg, MD 21784-8516 (410) 795-0771
143

Young, Joe, (Jackie) 36 S Weston Ave Elgin, IL 60123-6036 (847) 695-0108
314 Corkscrews & Tin Can Openers
E-Mail ISTAMP2@MSN.COM

Zanghi, Tony, (Cathy) 2225 Deer Trail Rd Coopersburg, PA 18036-9069 (610) 346-8232
342 Collect Pennsylvania Small Towns: A & B Type Openers,
Blob Top "Squat" Bottles, and Beer Labels (Pre-Pro and IRTP)
E-Mail ATZ0@MS1.ALLENCOL.EDU

Ziegler, Terry, (Ruth) 698 Huffs Church Rd Alburtis, PA 18011-2226 (610) 845-7102
525 All Types of Bottle Openers

Zruno-Rankin, Toni, (Jeff) 306 Spartan Dr Columbia, SC 29212-3622 (803) 798-8530
654 All Western PA Breweriana

Remember the 1997 Convention is in Buffalo April 23-27

and the 1998 Convention is in San Francisco April 22-26

1996 Fall Book Release from Schiffer Publishing



Corkscrews

Author: Fred O'Leary

Publication Date: July 1996

Retail Price: \$79.95

Size: Size 9" x 12", 340 pages

Qualities: Over 500 photographs, over 450 in color, 1,000 patents, Index

Summary: *Corkscrews* is a most amazingly thorough review of American patented corkscrews and their history. After touching on the origins and European patent history O'Leary shares the results of his extensive and meticulous research. His prose is entertaining and the photographs of patent records and corkscrews are beautiful.

With both detail and humor, O'Leary describes the patent process, the changing technology, the production, the big names, the absurdities, and the treasures of corkscrews. They are all here — from the early and mid-19th century when a corkscrew was needed to open medicine bottles, through the early 20th century when the corkscrew was often hidden in a complicated combination tool, right up to the present when the future of corks and the corkscrew are threatened by the screw cap. Each of the hundreds of corks pictured is identified by a dated patent number and any known relevant facts such as how it works and who manufactured it.

For the student of history, interesting quotes and tidbits from the patent records place the changing corkscrew in the context of better-known inventions and a world changing

rapidly. For the collector, 1000 patent drawings dating from 1851 to 1994 are provided in final chapter.

In O'Leary's own words, "For anyone who has been the victim of a crumbled cork, a floater, a chipped bottle, a strained back, a ripped pocket, an inappropriate ceremonial utterance..., here are over 1,000 well-intentioned attempts to solve your problem." He offers a toast to each inventor "for being one patent closer...to the perfect corkscrew."

About the Author: Fred O'Leary, as a restaurateur in the 1970s, first gathered corkscrews for pragmatic reasons. He is now a member of the International Correspondence of Corkscrew Addicts (ICCA) and the Canadian Corkscrew Collectors Club (CCCC).

Audience: corkscrew collectors, wine enthusiasts, antique dealers, historians, engineers, and cross collectors with tools frequently combined with corkscrews.

ISBN: 0-7643-0008-3

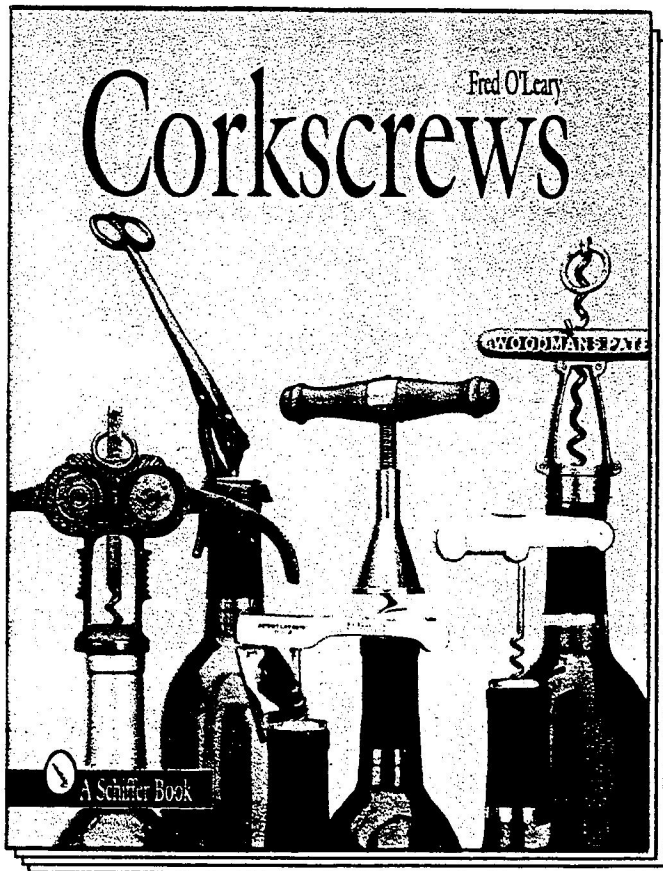
Published by: Schiffer Publishing
77 Lower Valley Rd
Atglen, PA 19310
610) 593-1777
FAX (610) 593-2002



For Further Information: Contact Fred O'Leary, 6149 Shadygrove Drive, Cupertino, CA 95014

The **DEFINITIVE** book
on U. S. patented corkscrews!

"Tell a friend..."



What do a topless bather, a coffin and a glass cutter have in common? Each is featured in a patent involving a corkscrew. Richly illustrated and narrated with sparkling clarity, this lavish coffee table book entertains while it informs. Here are 150 years of corkscrew invention from the ingenious to outright goofy -- making up a unique blend of primary research, friendly dialogue and visual excitement indispensable to the helixophile and certain to enhance anyone's appreciation of wine and antiques. A *great gift idea* for any special occasion.

- *Hard cover - 9" x 12" - 340 pages
- *Over 450 color photographs
- *More than 500 total photographs
- *1,000 patent drawings
- *Over 200 related patent drawings
- *Comprehensive tables
- *Foreword by Brother Timothy
- *Published by Schiffer Publishing Ltd.
- *Special Limited Edition offer
- *Attractive 12" x 24" 4-color cover poster suitable for framing

Shipping and handling: \$4 per book within U.S., \$12 all other countries. Allow 2-3 weeks delivery anywhere in North America, up to 2 months elsewhere. Faster Air Mail service to Europe may be specified for \$30. Other arrangements by agreement. Rates subject to change.

SEND NO MONEY NOW - PAY ON INVOICE

CORKSCREWS 1000 Patented Ways to Open a Bottle

- Quantity: _____ Limited Edition of 500, while available..... \$100.00 ppd.
(includes numbered certificate, slip cover and poster)
- _____ Regular edition only..... \$79.95 ppd.
- _____ Poster only, surface shipping included..... \$5.00 ppd.

Check here _____ if you wish your copy to be personally signed.

Name (please print) _____

Street _____

City/State/Zip/Country _____

You will be invoiced upon receipt of order. Invoice must be paid prior to shipment. California residents charged applicable Sales Tax. Foreign payment in Dollars (\$) only, by bank draft drawn on U.S. bank. Check here _____ for Europe Air Mail option. No credit cards accepted. Please mail or fax your order to:

Fred O'Leary
6149 Shadygrove Drive
Cupertino, CA 95014 U.S.A.

Fax (408) 255-0740