

P-11-2

JUST FOR OPENERS

PO Box 64 Chapel Hill, NC 27514-0064 (919) 419-1546
Past Editors Don Bull (1979-83) Ed Kaye (1984-1988) Art Santen (1989-1993)

Membership Renewals / Annual Dues \$20.00

If the label on your Newsletter Mailing Envelope has an Expiration Date of 09/30/98, please pay your dues now. A membership renewal card should be enclosed. Other members please verify the expiration date shown on your mailing label. If you do not agree with the date please notify me.

1998 Convention San Francisco, CA (20th JFO Convention) (April 22nd to 26th 1998)

San Francisco was a great town for a convention and we had a great host in John Cartwright. We had 36 members attend with several others stopping by. Some members made week long vacations around the convention including Pat and myself. Thanks so much John and Cheryl. John wanted me to include the following statement from him.

The Just For Openers 20th Convention is in the history books. I have found that this is a wonderful group of people that share a fun hobby. The comradery that you all have, I have not seen in other groups!

I would like to thank Mead Bates for providing the wonderful convention openers. David Burkhart for a great tour, lunch and fantastic Anchor Steam Beer. Laverne and Verne Vollrath for running an exciting auction. John Stanley whose constant hand-holding and hard work made this event happen. And finally to everyone who traveled to the City by the Bay,
THANKS! John Cartwright

1999 Convention Naples, FL (21th JFO Convention) (April 21nd to 25th 1999)

Bob McNary has everything set for next April. Please make plans to attend now. Convention registration and hotel information will be in the October and January issues.

Future Tentative Convention Sites

After talking with several members in San Francisco, the following tentative convention sites have been lined up.

- 2000 22nd Convention in Chicago IL to be hosted by Norm Jay
- 2001 23rd Convention in Lancaster PA to be hosted by Harold Queen
- 2002 24th Convention in St Joseph MO to be hosted by Don Whelan
- 2003 25th Convention in St Louis MO to be hosted by Art Santen

Waiting to host one in either Fredericksburg or Williamsburg VA is Larry Moter. I am sure you notice that I do favor sites in the Midwest which makes traveling easiest for most members.

Don Bull is Working on a Corkscrew Book

Don Bull writes: My book on corkscrews will contain over 700 photos with over 3500 corkscrews in color. It will be approximately 300 pages. The book will be available in the Spring of 1999. If you would like to receive details / order form when available, please let me know.

Don Bull, PO Box 596, Wirtz, VA, 24184, (540) 721-1128

Don Bull is Working on a Beer Advertising Knife, Letter Opener and Ice Pick Book

Don Bull writes: I am working on a book on beer advertising knives, beer advertising letter openers and beer advertising ice picks (sharp stuff). If you have any catalog pages, trade cards or any paper that pictures any of these, please send me a copy. If you would like to inventory your collection and let me know what you have, that will be helpful. If you have any of these items to sell, I'm buying!

Don Bull, PO Box 596, Wirtz, VA, 24184, (540) 721-1128

Secondary Fall JFO Convention ???

Gary Deachman has really been on me to have a Fall JFO Convention and he wants to have it in New Hampshire. I told Gary the only way it would work is for it to be in conjunction with another breweriana show and I really believe we need a central location. Preliminary talks were held with John Mlady who helps to run the Midwest Breweriana Convention in Omaha, Nebraska. The show dates this year are October 22-24 and it will be held at the Holiday Inn Convention Centre in Omaha. The show is sponsored by the Cornhusker Chapter of the B.C.C.A. (Beer Can Collectors Association). The show has 200 tables set-up with room-to-room trading and over 300 walk-ins at the Saturday show and of course always lots of good breweriana is found.

John has told me that any JFO member is welcomed and they can contact him for details. See "Show Ads" in this issue. I would like to hear from any JFO members who might be interested in attending and making this an Annual Fall show for Just For Openers. Please drop me a line and let me know how you feel. Starting next year John Mlady would like to be able to advertise this show as a JFO approved trade show.

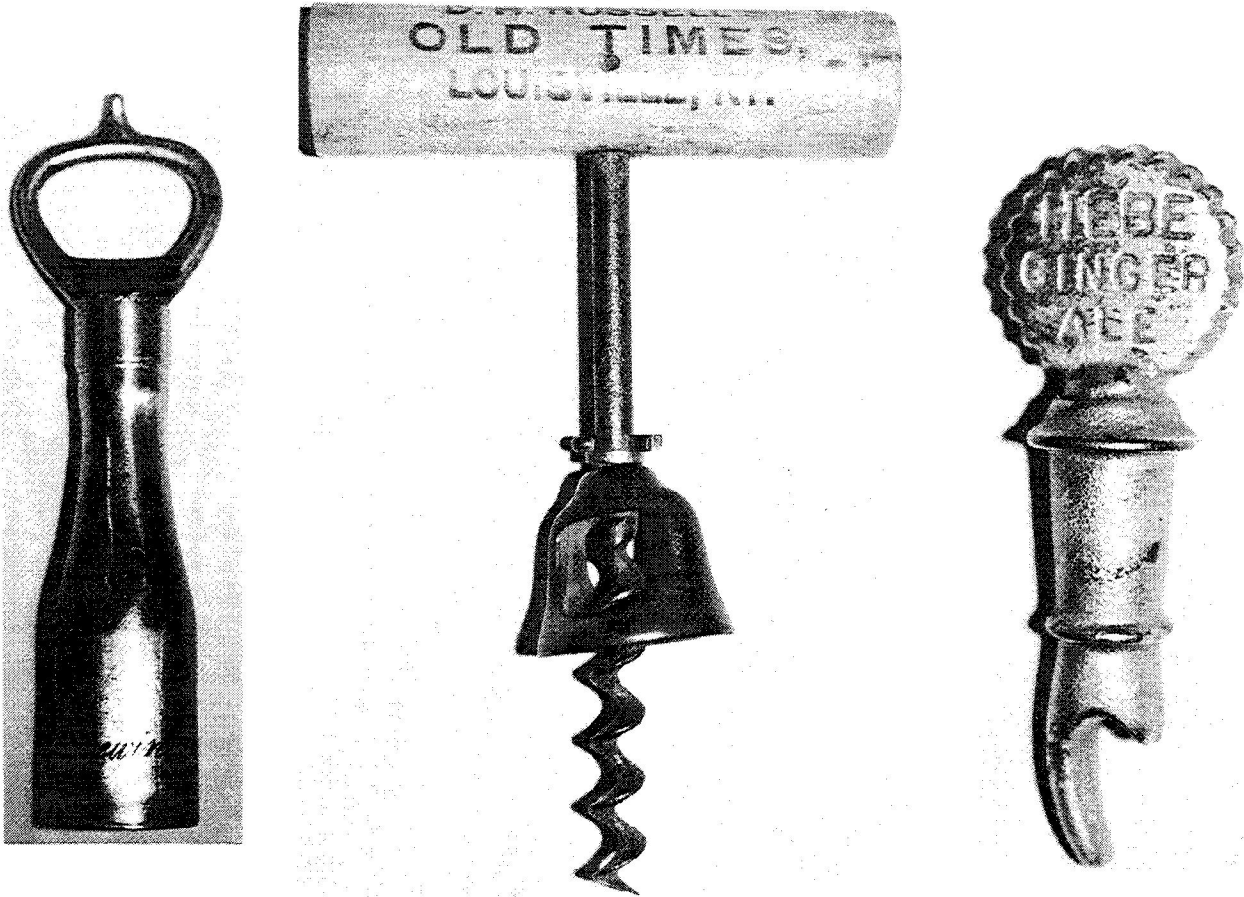
15% On Auction Openers

I have decided to start charging a 15% fee on openers consigned for the auction. The auction has provided a lot of nice openers for members, but with increased it has become very intensive. The auction takes me a full weekend to close out and at least a day if not two for putting it together. Anyone who has currently consigned material will not be charged but I will start with the October issue. If you have any questions please let me know.

John Stanley (Editor)

"Opener Trivia"

From the last issue on Don Bull's list of L-2s the last column denotes whether Don has the corkscrew or not, X-Has, Space-No. Questions for this issue. Larry Moter picked up an E-9 (pre-pro variety) marked "Bavaria Bogota / Same". He thinks he has seen a beer label from Baltimore with this brand. Does anyone have any information? Mickey and Ellie Dutcher own the piece show to the left below. The opener pulls out and reveals a corkscrew. The only markings are "Iroquois Brewing Co.". Does anyone have any additional information?

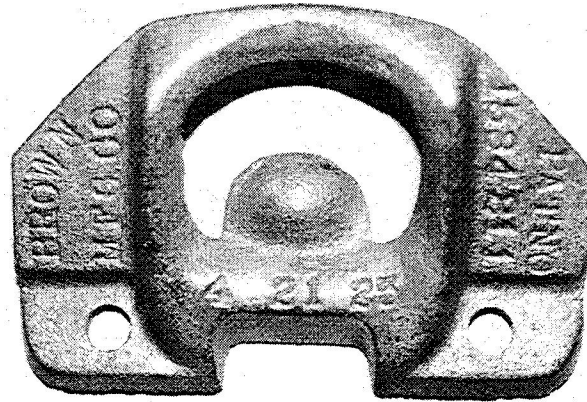


In the middle is a wood handle corkscrew, marked "D.H. Russel's Old Times Louisville, Ky. / First Prize Old Times Whiskey World's Fair". On top is the standard slogan "Don't Pull To Extract The Cork Keep Turning" and on the each end "Old Times Rye". It is the only advertising I have seen on a straight round corkscrew of this style. The vast majority of the handles are barrel shaped. Does anyone have one with any other advertising? Judy Jay has the same piece in her collection.

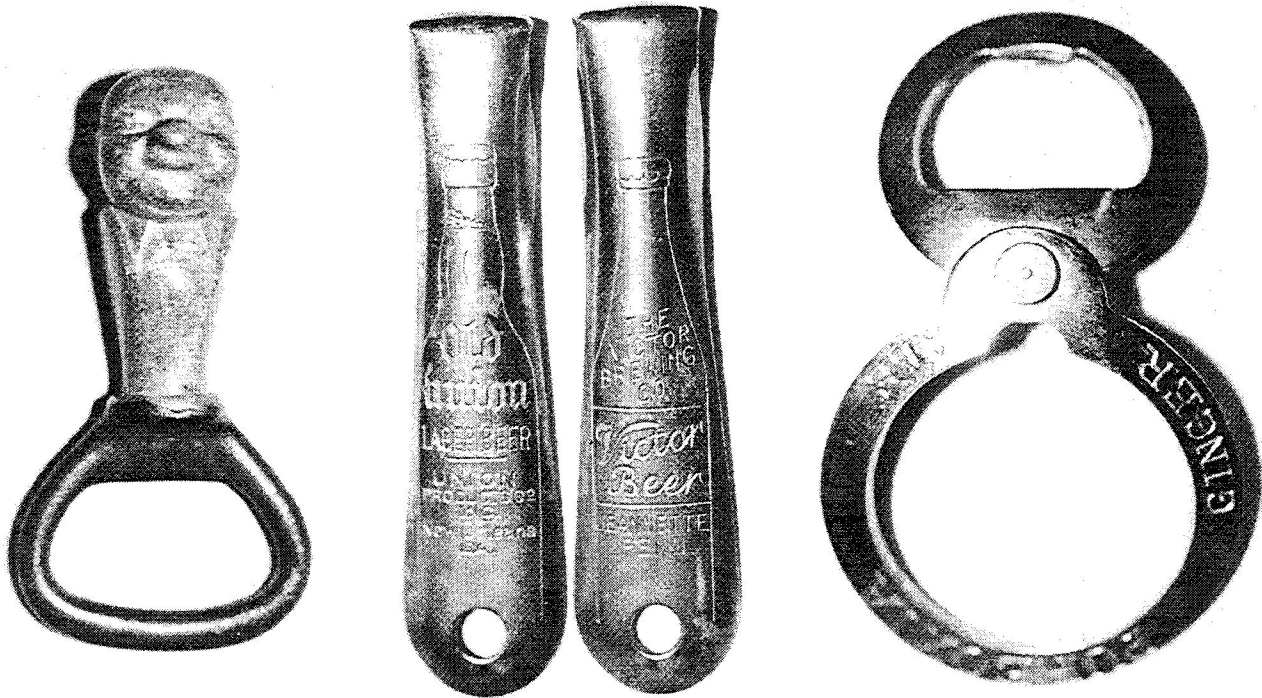
On the right is an unusual cast iron piece, marked "Hebe Ginger Ale". At one time the shaft had a stopper around it. The only known reference I know of with Hebe is for the "Hebe Co" of Providence, RI. They applied for their beer license in 1934 but did not receive a permit. If you have any information on this piece or this company, please write me.

"Opener Trivia" (Continued)

To the right is a very unusual wall mount
Marked "Brown Mfg. Co. Pat No 1534211
4-21-25". It is a very early Brown piece and
not at all like their standard wall mount.
Does anyone else have one?



The little man on the left came out the Wilmington collection. He is unmarked and a neat piece.
Does anyone know what he represents?

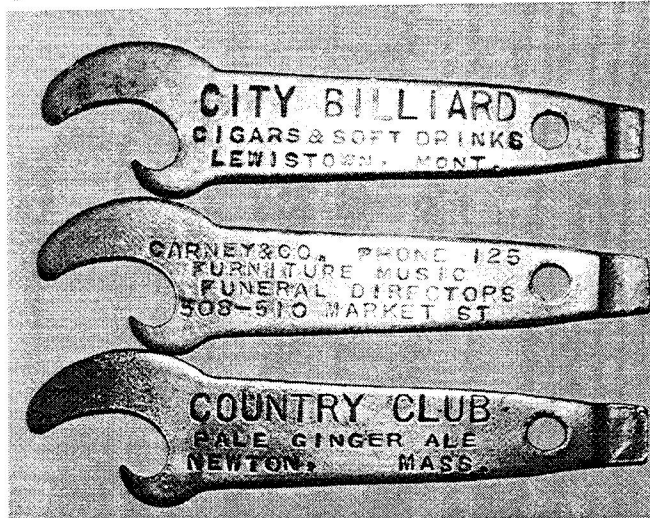


In the middle are the two H-1-ULs I got from Chris Quimby at San Francisco. They are the first two H-1s I have that have a bottle outline on them. Does anyone else have an H-1 with a bottle?

To the right is another opener that came from Chris Quimby. It is marked "Pureoxia Ginger Ale" which was a companion drink to Moxie. The opener end folds under the other part making a double ring.

“Opener Trivia” (Continued)

Bottom left an Canadian N-78 (also from Chris) and to the right three of the same unusual “B” type. The top is a desirable Montana piece, middle a funeral directors opener with a three digit phone number and the bottom one is the only known soda listing. Does anyone have a beer advertising one?



ECBA Allentown, PA Spring Show (April 18th, 1998)

Pat was not too happy about me going to the Allentown, PA ECBA show this year. I was leaving on Friday and coming back Saturday afternoon. Sunday morning we would be leaving for the JFO Convention in San Francisco but I figured I could squeeze in Allentown. I didn't want to miss the action and eight hours driving each way is not too bad. On the trip up I stopped at several antique malls, mainly in Pennsylvania, but did find anything save a plain two dollar milk opener with no advertising.

I arrived in Allentown at 6:00. Harold and Boots Queen along with some helpers were setting up the show room. Harold runs the show for ECBA. I pitched in a “little bit” and by 8:00 the room was ready with about 100 tables. Afterwards Harold, Boots and I went out for supper. Late that night Harold and I managed to do a some trading as the two of us would be staying in his camper beside Merchant's Square, site of the show. Boots was smart and made the one hour drive to their house in Jim Thorpe to spend the night. Despite several trains passing by during the night I slept pretty well.

We got up at 6:00, had breakfast and by 7:00 people were already lining up to get in the show. Members can get in before 9:00 and the general public can come afterwards. Early on I got some good openers but they were not cheap. The two best were an A-35-UL Barbey's (\$35) and an A-20-UL Schlitz (\$40). Several JFO members were in the early set-up crowd including Larry Moter and Tom Atkinson. Larry traded me a B-7 Bohrer for a couple of “E”s I had while Tom brought some nice openers for sale. I bought five openers from him and traded him a G-40 (Non-Beer/G-40 is a G-1 with a corkscrew) in mint condition for an unusual cast iron opener advertising “Hebe Ginger Ale” (see “Opener Trivia”).

For once Ken Ostrow did not have any great openers that I needed. Harold did buy an M-3 Harrison from Ken. It had no paint but had a good price. By 10:30 I had covered the show a couple of times and decided to head back home. Other JFO members at the show included, Herb & Helen Haydock, Tony Zanghi and Mickey & Ellie Dutcher. Mickey and Ellie brought along a new discovery from the Iroquois Brewery in Buffalo (see “Opener Trivia”).

ECBA Allentown, PA Spring Show (April 18th, 1998) (Continued)

The trip home was a quick seven hours as I passed by Philadelphia, Baltimore and Washington DC. Packing for San Francisco kept me up fairly late but I knew I could sleep on the plane. Allentown was not a great show but it's always nice to visit with fellow collectors.

For Avid Collectors, Corkscrews' Charm Is Out Of The Bottle

By Christa Worthington of the New York Times

For more than 300 years, inventors have tried to come up with the perfect corkscrew. And yet, from the bent nail to the space-age cork puller with a Teflon-coated screw, none has achieved the precise combination of delicacy, strength and handiness needed to draw corks without occasionally breaking one. Still, the long march toward refinement has gone on, with the ordinary corkscrew taking extraordinary diverse forms.

Tools blend art, utility and even a little bawdy humor. And that's before the wine is poured.

The simplest extract the cork by turning a handle. Others use rack-and-pinion winches or double levers, which fire the cork out of the bottle like a missile.

Eighteen-century pocket corkscrews have the prettiness of charms, handmade in gilded steel and precious metals. Most unpredictable are combination tools in which corkscrews are attached, with a Boy Scout's eye for preparedness, to other implements: knives, smoker's paraphernalia, culinary and grooming aids, and brushes for dusting off bottle labels. A dozen pocket-size instruments hang from the 18th-century tool kit called a folding bow – a corkscrew and a horse hoof pick among them.

"Corkscrews are as diverse as snowflakes," says one ardent collector, Joseph Young, a doctor in Elgin, Ill. "Some are works of art. Others are mechanically beautiful. The more you get into it, the more you realized you haven't seen them all, no matter how long you've been collecting."

Relics of hospitality, and sexual in symbolism, corkscrews attract a largely male, self-mocking crowd of wine and tool enthusiasts, given to puns about their "twisted" obsession. They are known to amass 4,000 corkscrews in a single collection, maintain vanity Web sites and participate with gusto in two **collector's** clubs.

The International Correspondence of Corkscrew Addicts, a group formed in 1974, is limited to 50 **collectors** who must periodically present photographs of their six best corkscrews to remain in good standing. And the Canadian Corkscrew **Collectors** Club has 2,000 members worldwide. At meetings of both groups, a ribald 18th-century poem, "The Bottle-Skrue. A Tale" is often heard.

Timothy Diener, a Christian Brother and retired Napa Valley vineyard keeper, is their patron saint, having founded the corkscrew addict's club.

His 1,600 corkscrews are on display at the Culinary Institute of America's West Coast campus in St. Helena, Calif.

In sync with the booming interest in wine and cigars, the corkscrew market has come into its own. Since 1994, Christie's in London has held sales devoted to corkscrews twice a year. Last year, an 18th-century English pocket corkscrew, with a 1910 inscription from Queen Alexandra, sold for a record \$29,000.

For Avid Collectors, Corkscrews' Charm Is Out Of The Bottle (Continued)

Early European designs like the rare French cage in cut steel (circa 1685) are now expertly faked.

Prototypes of patents that weren't widely produced fetch \$5,000 to \$10,000.

Still, corkscrews can be bought at auction prices starting at \$150 and valuable ones are available at flea markets for less.

With corkscrews, there are so many aspects that interest **collectors**, "says Dr. Bertrand Giulian, author of "Corkscrews of the 18th Century: Artistry in Iron and Steel" and a collector. "The function, the beauty of them especially in precious metals, the combinations of these corkscrews with gun tools, smoker's tools, with knives—all that has drawn in a lot of **collectors**. Most appealing is the corkscrew's association with wine, which has its own mystique.

A descendant of the gun worm, a long twisted tool used to manipulate fodder in firearms from the 16th century, the corkscrew might have been improvised by thirsty hunters in the field trying to get into a bottle. Until the bottle cap was invented in 1891, all sorts of containers were corked. Corkscrews were made in miniature for the more difficult removal of the stoppers used for alcoholic beverages.

Performance depended on the design of the steel screw, which had to apply up to a ton of pressure.

By the late 17th century, the ancient practice of aging wine, lost after the fall of the Roman Empire, was back in fashion and in need of technical adjustment. Dom Perignon, the French monk who discovered champagne, tested stoppers and cork closures. But not until the glass industry was standardized was real progress made. The cylindrical bottle replaced the bulbous one and could be stored on its side. Corks had to be pressed flush and deep inside a longer bottleneck to avoid leakage and spoilage, and only corkscrews could get them out.

The first patent was awarded in England in 1795 to eccentric Rev. Samuel Henshall, a convicted debtor whose scholarly writings were deemed gibberish. This T-shaped corkscrew created suction with the cork, thereby releasing it more easily.

By the 19th century, patents and mechanisms multiplied, and the corkscrews were pumped out by millions from the steel mills of Birmingham. Mighty corkscrews attached to counters in bars and taverns quickly bore trade names like Rapid and Hero. Handles became billboards for commercial establishments, and Americans produced their own patented corkscrews. Today, the worm is made of strong, high-tensile steel, allowing the screws to be more slender. The greatest contribution to the industry in this century has been the Screwpull, invented by a Texan, the late Herbert Allen. With an antifriction coating on its helical screw that reduces the turning force required, it is the only corkscrew to be called near perfect.

New E-Mail Addresses

Dewaine Alcorn
Jim Osborn

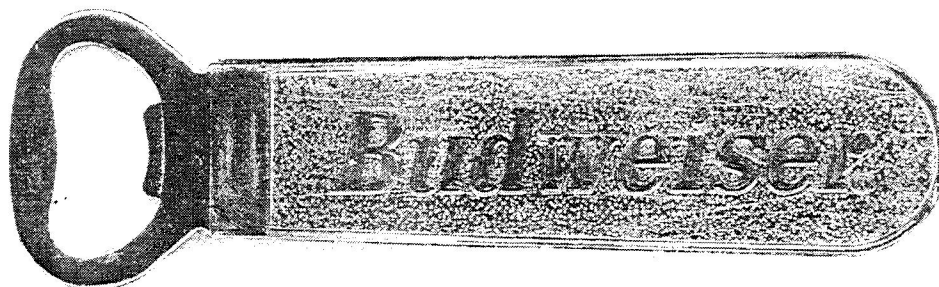
DALCORN@UNL.EDU
JRO320@MYCHOICE.NET

(Change)

New Budweiser Opener offered from "Bud Gear"

George Love send me the following picture of a new Budweiser opener (looks like an M-106). You can order the opener for "36 Bud Points" and \$3 Shipping and Handling from the following address. "Bud Points" are earned by buying Budweiser products.

Bud Gear PO Box 7050 Mankata MN 56006-7050



Sealtite Catalog Flyer Sold on Ebay

"SEALTITE" QUALITY

CROWN CORKS and CROWNERS

Know the Strength of the Best Openers and Crown Corks on the market.

Sealtite Opener
Wm. J. Russell

Wm. J. Russell
New York City

"Sealtite" Quality Openers
Wire and Metal

Finest
Material
Low Prices

Please refer to reference address below.

WILLIAM J. RUSSELL
NEW YORK CITY

The "SEALTITE" METALLIC Opener
Nickel Finish

ADVERTISING VALUE. This is an important point to consider. The large advertising space given means enough for name, address, trade-mark, or any catchy expression. Our Opener will feature a history in every bottle, because it is so very memorable. Everybody will use it. Women like it because it works so easily. Once it enters a home it stays there. This is the kind of advertising that pays. Get the Family Trade.

PRICES

These prices include a plain design of any 25 to 50 letters. Larger letters or anything fancy will cost extra.

Quantity: 5,000 Openers (each) -	\$14.50 ea.
10,000	14.50 "
25,000	13.25 "
50,000	12.00 "

Terms, 30 days net, F. O. B. Factory

20 th Just For Openers Convention San Francisco CA Attendees

(*) 1 st Convention Attended	
(**) Convention Host	
Marc Benjamin (Pat)	Edenton, NC
Bronson Berlin (Berta) (*)	San Luis Obispo, CA
Bob Campbell (Elayne) (*)	Scottsdale, AZ
John Cartwright (Cheryll) (* **)	Ukiah, CA
Dick Clark (*)	Yuma, AZ
Dick Creuziger	Racine, WI
Gary Deachman	North Woodstock, NH
Sandra Emme	Upper Marlboro, MD
Jack Ford	Oakland, CA
John Goff (June)	Kirkwood, MO
William (Tom) Gormally (Phyllis)	Westfield, NJ
John Hall (Anna)	Sebring, FL
Robert Hedges (Leticia) (*)	Bloomington, CA
Ollie Hibbeler	Lake Ozark, MO
Ben Hoffman (Cornelia)	Perkionmenville, PA
Harry Horn (*)	Sacramento, CA
Norm Jay (Judy)	Wheaton, IL
Vic Keown (Mary Ann)	Saint Ann, MO
Charles Kirkpatrick	Denver, CO
Dave Lendy (*)	Carol Stream, IL
Larry Moter	Woodford, VA
Fred O'Leary (*)	Cupertino, CA
Joe Paradi (Monika)	Mississauga, Ontario Canada
Bill Pattie (Lyla)	Snoqualmie, WA
Harold Queen (Boots)	Jim Thorpe, PA
Chris Quimby (*)	Vancouver, WA
Robert Rocchetta (*)	Sunnyvale, CA
Art Santen	Saint Louis, MO
Don Sherman (Ruth)	Los Angeles, CA
Bob Stahly (Marge)	Streator, IL
John Stanley (Pat)	Durham, NC
Verne Vollrath (LaVerne)	Janesville, WI
Don Whelan (Cora)	Savannah, MO
Herb White (*)	Lake Havasu City, AZ
Don Williams (*)	Danville, CA
Joe Young (Jackie)	Elgin, IL

Saturday Show Attendees:

Pete Nowicki, Dave Pinney and Dean Walters

Many thanks for convention pictures to Robert and Leticia Hedges, Bob and Marge Stahly and Don and Cora Whelan. The Hedges especially had nice pictures. Thank you.

1998 Convention San Francisco, CA (20th JFO Convention) (April 22nd to 26th 1998)

JFO would be finally going to the West Coast and San Francisco seemed the perfect spot. I knew all of the spouses were excited and especially Pat. She was up until 2:00 Saturday Night packing and we were flying out at 10:30 the next morning. We were up by 5:30 and continued getting ready. Corkie "the Yorkie" would be staying with friends and Pat had to drop her off before we left for the airport. We changed planes in Cincinnati and the flight to San Francisco from there was a long one especially since I was in the middle of three seats. Being 6'2" was not a bonus on this plane. On the last hour of the four and a half hour flight Pat graciously switched seats.

We had checked in one large suitcase and each had two carry-ons with one of mine being a small case of openers. In Raleigh the person doing the x-ray checking said you have a box of corkscrews and I replied you are right. They didn't ask me to open the case. I spent the flight out looking over and organizing what I had brought. We arrived in San Francisco at 2:30 and caught a shuttle to the Hotel Californian our home for the next week. The hotel was old but close to downtown. The rate of \$80 a night was certainly on the low side for "The City". I knew it was a no frills hotel when walking into the lobby I spotted duct tape separating the entrance from the carpeted check-in room.

The convention had officially started for me. Joe and Jackie Young had arrived Friday and Gary Deachman had come in the day before, Saturday. Joe and Jackie had spent Saturday going to see a fellow corkscrew collector, Brother Tim, in the Napa Valley at the Christian Brothers Winery and today they were visiting other friends in the Bay Area. Gary had hoped to go to a beer show in Stockton early this morning, but couldn't find a car to rent in time. Later we find out that our convention host, John Cartwright, attended and got a D-15 Red Feather at a very reasonable price. So after getting settled in our 16th floor room, I called Gary and went down to his room to catch up on the latest opener news.

Pat came down later and the three of us decided to ride the Powell/Hyde Streets Cable Car to Fisherman's Wharf. We had a good seafood supper though I forgot that Pat hates seafood but she survived. The 10:00 ride back to the hotel was a chilly one. The weather for the week would be very nice. Many thanks to El Nino for taking the week off. I called John Cartwright that night and we agreed the next night to go see a breweriana collection in San Jose. Being an east coast person the time change was not too bad and I held out until 11:00 before going to bed.

Monday morning we got up with Joe and Jackie and along with Gary had breakfast in the hotel restaurant. The ladies decided we should do a group bus tour of the city. Reservations were made in the hotel lobby for a 1:00 tour. With the morning free we decided on a walking tour of Nob Hill. Joe and Jackie's daughter had an apartment in the area at one time and Pat wanted to see the location. From the Hotel Californian it is pretty much straight uphill all the way. After a couple of blocks Joe and Gary were really complaining. Another two blocks we reached the top of Nob Hill but everyone was tired. Pat and Jackie went across the street to tour a church while the "old" guys rested. From there we went down three blocks and saw the apartment building across from the Ritz-Carlton. We had lunch at Perry's after walking a few more blocks and felt good to sit for awhile until the check came for my \$15 cheeseburger and two sodas, not bad for San Francisco I was told. The afternoon tour lasted four hours and we hit most of the main areas of interest. San Francisco has lots of great scenery.

1998 Convention San Francisco, CA (20th JFO Convention) (April 22nd to 26th 1998)

Back at the hotel we grabbed a quick supper and after talking to him many times on the phone and completing a lot of opener trades, I finally met John Cartwright. John was taking Gary and me to see a breweriana collection in San Clara. Joe was too tired and passed on the trip. The trip to San Jose took an hour as we went down the east side of the bay. The collection we would be seeing belonged to Frank Serrano and his main focus is on bay area breweriana. Frank had constructed a large building (20 X 12) in his back yard and it was pretty much covered wall to ceiling with breweriana. He also built his own showcases and had Gary drooling over the many nice pieces with bottles on them (Gary's specialty is any breweriana showing a bottle). Frank did not have a large corkscrew and opener collection but he had most of the local items covered along with several nice Anheuser-Busch corkscrews. We spent two hours looking over Frank's collection and we made the return trip to San Francisco up the west side of the bay. John Cartwright was a one man tour company and had us back at the Hotel Californian by 11:00.

Tuesday saw John open up the hospitality room. Several members were checking in by lunch and John had the room ready by 11:00. Pat enjoyed the walk up Nob Hill so much the day before that she and I made an early trip back. Since the hospitality room was on the 14th floor I convinced Pat to move there from our 16th floor room. Gary ended up helping John bring all of his stuff up to the hospitality room while I moved all of our belongings into our new room. John did have four trays of openers for sale and both Gary and I bought several pieces.

By noon it was time to head over to Oakland to visit Jack Ford. John did take us (Joe, Gary and me) to a nice outdoor hamburger joint in Oakland with good prices. Cheap food this time tasted better than anything I had since arriving. We even stopped at a real junk shop. The guy had some junk openers but nothing good. I had been looking forward to this day for a long time. Jack was waiting on his front porch when we pulled up. Jack was the first JFO member I ever traded with. It was 1983 and I traded him an A-34 Texas Saloon opener for a couple of "A"s. Since I have become JFO Editor, Jack has been very supportive. John has been to Jack's house many times but the three of us were first timers and Jack's collections did not disappoint any of us.

We walk into his house and everywhere you look there is great stuff. His main love is primitive art followed by Hawaii memorabilia, Ukuleles and flat figural openers. Jack told us to just start looking! Joe Young looks at can openers first. The first six he pulls out of a box he doesn't have and that's saying something when you own over 4,000. Gary and I dove into the openers while John stood and watched. It was like three kids in a candy store. Jack really collects anything neat or as he called it, "cool stuff".

Before I got into looking I did present Jack with an opener he needed for his figural collection, an A-59 Providence. A trip to the bathroom required a five minute stay as Jack had a multi-shelf showcase full of corkscrews, breweriana and "cool stuff". Included were some nice beer mini-mugs and Anheuser-Busch pocket knives. By this time you get the picture, if its neat Jack has it.

Jack had his openers in plastic shoe boxes separated by type. We sat in the kitchen and spent a good hour checking them out. Most of his figural collection was at a photographer's place being pictured for an upcoming flat figural opener book. In the kitchen he had one showcase full of Rainier beer items including some really tough openers and corkscrews.

1998 Convention San Francisco, CA (20th JFO Convention) (April 22nd to 26th 1998)

The toughest corkscrew was a P-100 which Joe and I carefully checked out. When it was handed back to Jack he nonchalantly flipped it on the kitchen table from five feet away. Joe and my eyes got real big when that happened. Of course the old pieces are a lot more durable than you think. Jack was always darting off to get something else to show us. Just when I thought I had seen it all, out came another piece of "cool stuff". Everytime Gary would look at something, he would say "no shit" in disbelief. If he said it once he said it a hundred times and everytime he brought something out Jack would first say, "Gary you won't be interested, it doesn't have a bottle on it", egging Gary on a little bit.

Joe finally joined in looking at the openers. In the A & B types there were several I wanted, but in the end I chose a P-11 Fresno, a M-3 variation from the 1933 Chicago World's Fair (twice as wide and half as thick as a normal M-3), a G-5 Wetterer, G-5 Bay City and an E-17 Gund. Jack told me to take them. We ended up spending three and a half hours at Jack's. We got to meet one of his friends, Rick Munoz, who also collects breweriana. The time went fast and it always does when you are having a good time. We left about 4:00 trying to beat the traffic jam back to the "City". Thanks for a great time Jack and thanks for sharing your collection!

We arrived back at the hotel at 5:00. Don Sherman had checked in and I finally got to meet his wife, Ruth. John opened up the hospitality room and that evening we just hanged out talking openers. Before going to bed John agreed to take Don, Gary and me two hours north of San Francisco the next morning to see his collection in Ukiah.

Wednesday is the day with most members arriving. We left the hotel at 7:00 the next morning heading for Ukiah. Going north out of town, the traffic was not too bad. The game plan called for us to see John's collection and check out some local antique malls. One supposedly had a beer advertising match safe with a bottle on it for you know who. We reached John's house about 9:30 and spent 30 minutes checking out his collection. He main interest is anything with Rainier and Golden West beer and "A" and "B" openers with either beer or soda advertising. He had a family heirloom tool chest full of his good openers.

We then headed back to Santa Rosa to hit some antique malls and shops. Lunch was another good cheeseburger at a roadside picnic table diner. We searched several shops and I did end up buying some playing cards and a sterling-handle opener with a gambling motif. The last stop we made was the shop with the match safe and of course it had been sold several months before. By this time anyway, Gary had decided he already had one in his collection. Thanks John for that hot tip, but you never know until you check it out.

By 2:30 we were back at the hotel. Several members had checked in and most were being put on the 14th and 15th floors. John opened up the hospitality room and started registering people. I ended up doing some trading with Don Sherman and Don Whelan. Later in the afternoon when John had caught up with the registering we completed our deal from the day before. At least I thought we had until John reminded me in the hospitality room that I had forgot about a K-2-UL San Antonio of his that I wanted. It was okay to remind me but Bob Stahly was sitting there and he loves bar mounts and was foaming at the mouth when this was mentioned. John C. and Bob tried to have a mini auction but John finally accepted my offer of \$50 as Bob was kind enough to finally keep quiet. That evening we tried a group supper but after failing on several attempts to locate the right restaurant, we split up into groups. By 8:00 we were back at the hotel and doing room-to-room trading.

1998 Convention San Francisco, CA (20th JFO Convention) (April 22nd to 26th 1998)

Larry Moter and I completed some unfinished business from Allentown. I got some miscellaneous openers including a Holsum Bread opener and soda wires while Larry got some nice beer wires including an E-17 Salt Lake City. Bob Stahly traded me an A-30 Rahr for an A-42 Port Washington and I traded Ben Hoffman a cigar box opener advertising Hoffman Cigars for a B-30 Coca-Cola opener. I also picked up some miscellaneous pieces and this convention was shaping up real good opener wise. Gary kept kidding me that I was getting all of the good openers but he was getting his share also. Probably the best was a D-15 Red Feather that he received from John C, for an A-17 Coca-Cola opener. It was the D-15 that John got at the Stockton beer show on Sunday, the one Gary missed.

Everyone who reads the newsletter knows about Pat's lessons in "Openers 101". John C. was getting "Trading Lessons 301" or so he claimed since he was dealing with the "big boys". I believe John is a pretty smooth trader in his own right. Despite all of the wheeling and dealing the convention is best known for its camaraderie between attendees with special deals for the host. Old faces or new faces, everyone is always welcomed and as usual we had several new faces. The last member to show up Wednesday was Norm Jay and since he had to lug a seventy-five pound suitcase full of openers two blocks, Judy and he were rewarded with a "presidential suite". It was the nicest room in the hotel. The sitting area was as big as anyone else's room and as Norm told me, when you work hard you get good breaks. Since he brought some good openers for trade and sale he was forgiven for keeping the best room. The Jays like the Benjamins and Vollraths had taken a train out and had a great trip to the "City". Everyone was having a good time.

Thursday I stayed at the hotel and did room-to-room trading and socialized. Pat and I once again walked to the top of Nob Hill. Our one no-show from Wednesday arrived early, Bill Pattie. He brought his fabulous collection of Montana Openers for display. He also had a nice selection of traders and a lot of openers for sell. Gary led the way in his room when he opened. Bill knew that Gary had the only known A-45 "Pixie" and it was from Montana. Gary picked several items but he and Bill never worked out a trade. I traded Bill some minor Montana openers and Bill was kind enough to sell me three pieces, the best being a P-28 Rainier. Gary really wanted that one and I eventually traded it to him for an A-B match safe.

Norm Jay opened up his room that morning and five of us were going through that seventy-five pound box of openers. I picked up some corkscrews and non-beer openers. Of course Norm wanted to trade and I had picked up an Atlas Brewing Co match box holder and on Monday had gotten a pre-pro toothpick holder from Pekin Brewing Co that Norm wanted. As usual Norm wanted some time to think about the deal and it was that evening before we closed it out. In fact Norm actually sold me some openers as my pile was a little bigger than his. That evening we had a group supper at Lefty O'Douls and afterwards it was more room-to-room and socializing in the hospitality room.

Friday was group tour day for the Anchor Steam Brewery. I rose early and rode the Powell-Hyde Streets cable car by myself. The scenery is truly amazing early in the morning. John C. has lined up a shuttle driver and left shortly after 10:00 for the brewery. It was a short 15 minute ride and we were about 30 minutes early. JFO member Dave Burkhardt is one of the managers at Anchor Steam and he would be our tour guide today. He welcomed us into the brewery bar room for free beer and snacks. Everyone spent the free time checking out the great breweriana that was on display. Several showcases and the walls were crammed full. The beer and snacks weren't too shabby either. Only a few openers were on display but lots of nice trays and signs.

1998 Convention San Francisco, CA (20 th JFO Convention) (April 22nd to 26th 1998)

The tour lasted 45 minutes and we were back at the bar for more free beer and a free hot dog lunch with chips. Dave gave everyone two free openers from Anchor Steam and a few lucky people got free calendars. By 1:00 we back at the hotel. It was time for Don Whelan, Bill Pattie and myself to finish a 3-way trade. Don had found an M-73 Budweiser/Becker (Red) corkscrew slide-out on the way to the convention. Don was willing to trade the M-73 Kessler Hotel (Yellow) for Bill's mint M-73 Missoula (Blue). That would give Bill 11 of the 12 known Montana M-73s (he needs the M-73 Kessler (Blue Non Hotel). In turn Don traded me M-73, a F-6 Hires, N-38 Nail Clipper and a B-22 K.C.B. for an R-7 Hauenstein and a P-8-UL Schlitz. Everyone was happy and especially Bill Pattie.

I rested up in the room that afternoon as John C. kept reminding me that Chris Quimby would be checking in that afternoon. John also reminded me that he knew what Chris looked like and I didn't. Chris was bringing several hundred openers to sell including "A"s, "B"s, "C"s, "E"s and a lot of miscellaneous. Naturally our expectations were high. Bill Pattie's room was next to mine and at 4:00 I could hear noise and went next door to check it out. A stranger is standing in the doorway and sure enough it is Chris Quimby. We chat a minute and he wants to make a round of the open rooms to see what is available. He says he will open up later on. Finally about 5:00 John C., Don Whelan and I find his room and Chris is just setting up. Fortunately for the three of us Gary Deachman is next door to Chris but he is taking a nap (good timing Gary).

Chris had several bags of openers with rings full of openers and the rings separated by type. I realized pretty quickly I was going to be spending some serious money. My pile was getting big and I got a little help when Don had to go get his handbook. I did set aside a nice B-5 Royal from Kansas City for Don. In the end my pile included the following.

A-1-19 Santa Cruz	A-1-28 Yosemite	A-20 Coca-Cola	A-29-20 Old Style
A-35-UL Juneau	A-36 Shanks	B-6 Baker Cigars	B-17-10 McInnery
B-18 Coca-Cola	B-18-15 Chattanooga	B-18-199 Kansas City	B22-14 Minneapolis
B-22-122 Pechstein	B-46-1 Seattle	C-30-1 Gambrinus	E-9-36 Hauck
E-14-522 Missoula	G-21 Livingston Bot	H-1-UL Union Prod	H-1-UL Victor
H-11-12 Miller	M-3 London Dry	M-3 Shea	M-20 Soda Water
M-25 Brown-Forman	N-78 Mutz's Beer	N-999 Pureoxia	P-4-1 Sequoia

I bought most of the openers in this first trip and the tab came to \$750. I bought a few later on and spent another \$100. Of course John C. was eyeing my pile and he wanted a few pretty bad. I ended up selling him the P-4 and later trading the M-3 London Dry Ginger Ale to him. I was happiest with the 2 H-1s as I had 28 of the 45 listed and to find 2 ULs plus they both have bottle outlines on them. None of the 28 I own have bottle outlines. They were not cheap but I was real glad to get them. Chris had spent a lot of time cleaning these openers and just about everything he had looked great. Some collectors don't like openers when they have been cleaned but I was real glad he had gone to the trouble to clean them.

Afterwards I went next door and Gary was half awake. He checked out what I had bought and also liked the 2 H-1s and the H-11 Miller. I sold him the H-11 since it had a bottle on it. I then urged him to go next door and check out the big sale. By now word had spread quickly and Chris had a steady stream of customers. The auction was slated to start that evening at 7:00. From 7-8 you could place up to three items in the auction. The auction would run from 8-10 and as usual Laverne and Verne would be running the auction. I would help by holding items up.

1998 Convention San Francisco, CA (20th JFO Convention) (April 22nd to 26th 1998)

Verne besides being an excellent auctioneer provides a lot of entertainment with his comments. Unfortunately this year with a lot of so-so items and the night hours, the mainly eastern crowd was not too enthusiastic. Several good items were passed for failing to meet the seller's reserve. The highlights were a M-73 Texaco with no paint for \$100, an A-10 Muehlebach with a broke beak for \$53 and a N-85 West End for \$57. The auction ended by 9:30 and like LaVerne I was ready to go to bed. Thank you very much Verne and LaVerne for a great job. You really make it look easy when it is not. I did check out a few rooms afterwards but by 11:00 was in the bed.

Saturday morning I was up early and went with Ben and Cornelia Hoffman to ride the cable cars down to Fisherman's Wharf. Cornelia wanted to be able to tell people back home she had made one trip on them. We left the hotel at 6:15 and by 7:15 we were back. People were already in the show room setting up. One of the first was Dean Walters, a local corkscrew dealer and former JFO member. By 8:30 most of the tables were full and at 9:00 Harry Horn arrived from Sacramento and got the last table beside me. As he was unloading all I could see were arms reaching in including mine. I got a M-21 Rainier, M27 Lone Star, a M-28 Coors and Harry threw in a B-32 Manitou. Gary Deachman traded him out of a nice brewery advertising watch fob. Harry couldn't unload fast enough. It was a good 15 minutes before things settled down. Several smiling faces left his table.

A nice group of walk-ins came by and at 10:30 we completed balloting for the display contests. Don Whelan won best in show award for his M-73-14 Budweiser/Beckers piece. JFO Dave Pinney who attended the Saturday show really wants one because his parents owned the beverage company that gave this opener/corkscrew away. Bill Pattie won the regular display contest with his Montana Opener/Corkscrew display. He collects any Montana openers or corkscrews whether they are beer or non-beer. Vic Keown was second for his nicely displayed collection of M-3 slide-out openers. Fred O'Leary finished third with his salesman sample kit of openers and corkscrews from the Vaughan manufacturing company.

The show room was small and several members had to share a table and one, Chris Quimby, actually had to set up outside the main entrance. By noon people were packing up to catch planes home. Several members remained and we spent the afternoon in the hospitality room and that evening we had another group dinner to say thanks to John and Cheryl Cartwright for having a great convention. Afterwards John and Cheryl decided to go home and try and catch up on some rest. I kept the hospitality room open until 11:00. The next morning Pat and I had to leave by 8:30 for the airport. I did ride the cable car one more time and got to say goodbye to most everyone who was left. Norm Jay even convinced Don Whelan to drive back with his seventy (down from seventy-five) pound box of openers and he would pick it up from him at ABA in June. It took some urging but I convinced Pat to be "bumped" on the return flight and we got 2 free roundtrip tickets to anywhere in the US. We only lost two hours in time. It was well worth it. We didn't arrive back in Durham until 11:00 that night and it took me about 10 days to fully get over the time difference. It was a great convention and I am ready to go again. Thank you again John for a great week in the "City By The Bay".

Dick Clark sent me the following letter. When I was at the convention I had a great time, met some great people and bought some great openers. I heartily encourage everyone to make a convention, you get to buy openers from parts of the country you may never go and at good prices. I bought 20 openers for less than \$3. You get to meet all those people you read about, wives included and you get to shop until you drop (wives included) and have a great time.

1998 Convention San Francisco, CA (Pictures) (April 22nd to 26th 1998)



Convention Host John Cartwright
"Let's Get The Show Going"

We need one picture of the Golden Gate Bridge

Tom Gormally, Judy Jay and Don Whelan
In the Mini Hospitality Room

Cora Whelan, Art Santen and Marge Stahly
In the Mini Hospitality Room

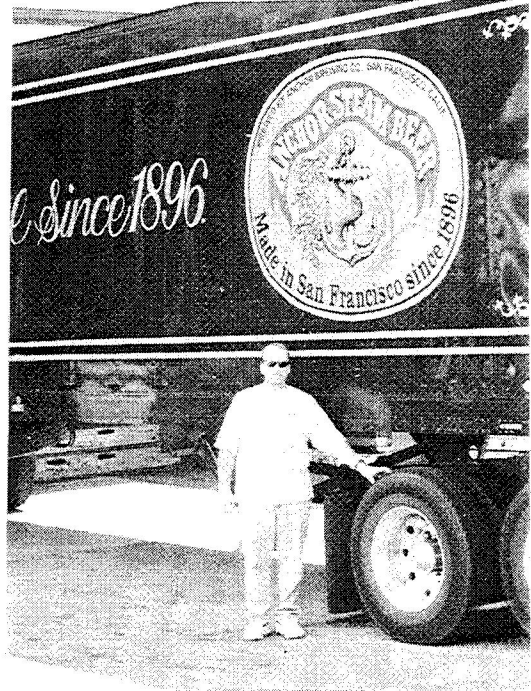
Phyllis Gormally and Bob Stahly
In the Mini Hospitality Room



1998 Convention San Francisco, CA (Pictures-Continued) (April 22nd to 26th 1998)



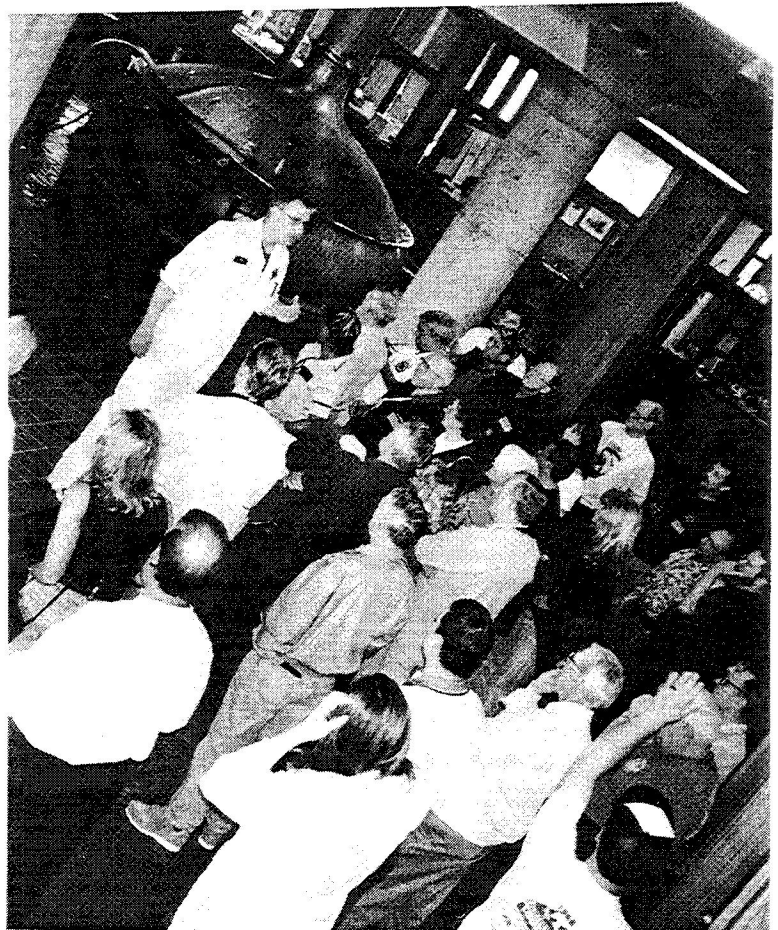
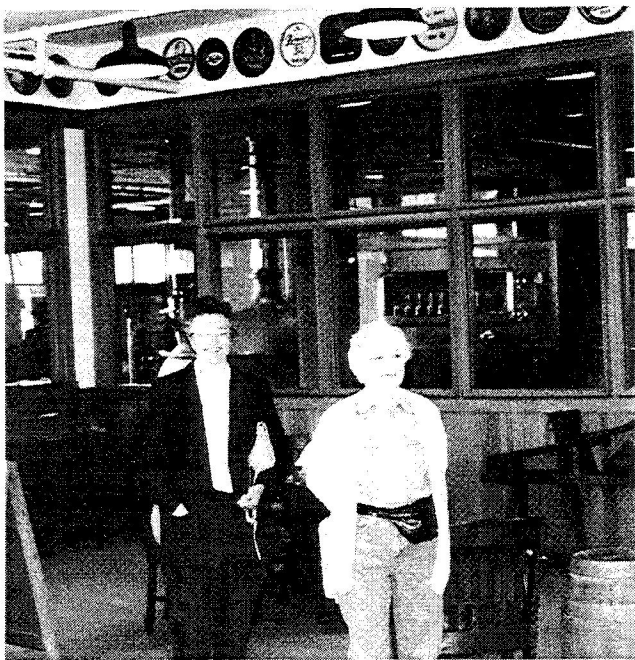
Gary Deachman met a fellow New Hampshire Native on the Anchor Steam Tour



Robert Hedges is ready to make a Delivery

David Burkhardt (white uniform) starts the Anchor Steam Brewery Tour

Cornelia Hoffman and Cora Whelan wait For the tour to start



1998 Convention San Francisco, CA (Pictures-Continued) (April 22nd to 26th 1998)



Gary looks serious while John needs Another Anchor Steam Beer



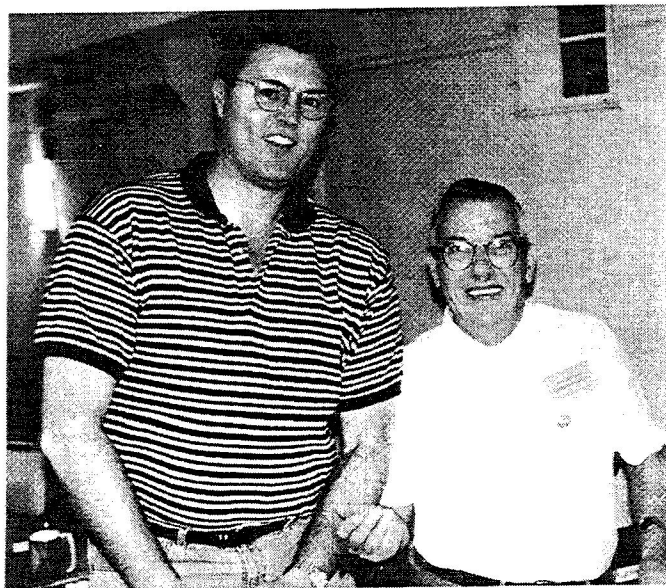
Part of the Auction Crowd (#1)

Part of the Auction Crowd (#2)
That's Dave Lendy showing Don and Ruth Sherman an Opener



Verne and Laverne Vollrath
"The Auctioneering Couple"

Dave Lendy and Ben Hoffman
Just Completed a Happy Trade



1998 Convention San Francisco, CA (Pictures-Continued) (April 22nd to 26th 1998)



"Admiral" Norm Jay



Gary must be laughing that Cora and Ruth are talking openers?

Joe Young and Joe Paradi talking Corkscrews

Corkscrew Author Fred O'Leary (left) and Corkscrew Dealer Dean Walters (right)

Below Bob Stahly found another opener he needs



1998 Convention San Francisco, CA (Pictures-Continued) (April 22nd to 26th 1998)



Pat Stanley, Jackie Young and Sandra Emme Smile Big for The Camera



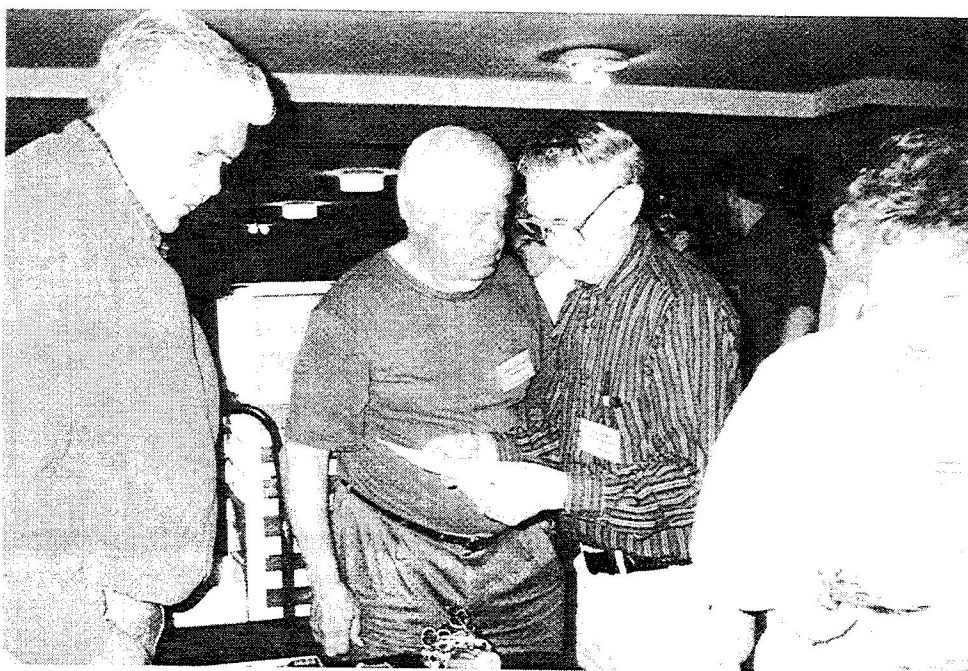
Gary Deachman talking up Openers

Vic and Mary Keown beside Harold Queen

Harry Horn watching the openers go out to Marc Benjamin, Tom Gormally and Sandra Emme



Below Sandra Emme selling those Figurals



1998 Convention San Francisco, CA (Pictures-Continued) (April 22nd to 26th 1998)



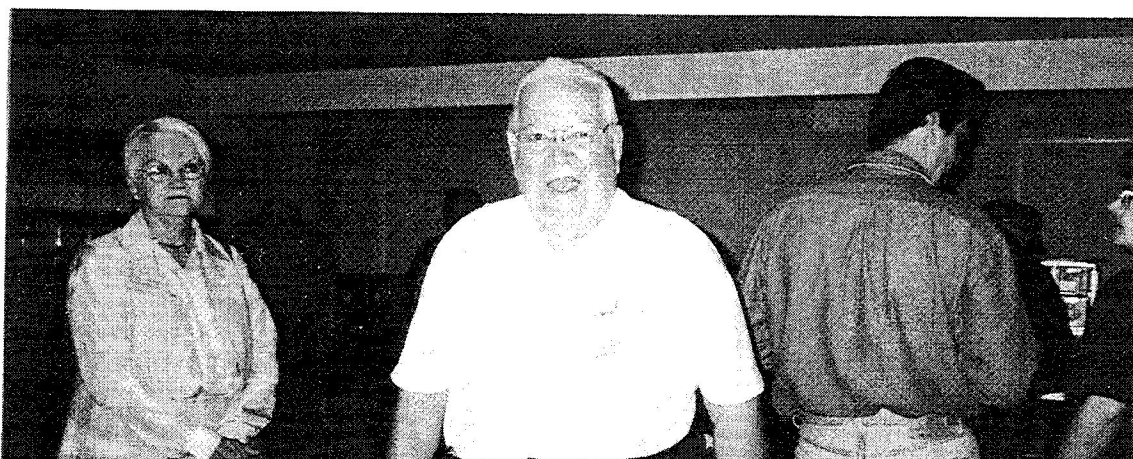
Gary hamming for the camera but Cora gets him



Leticia Hedges and Bill Pattie

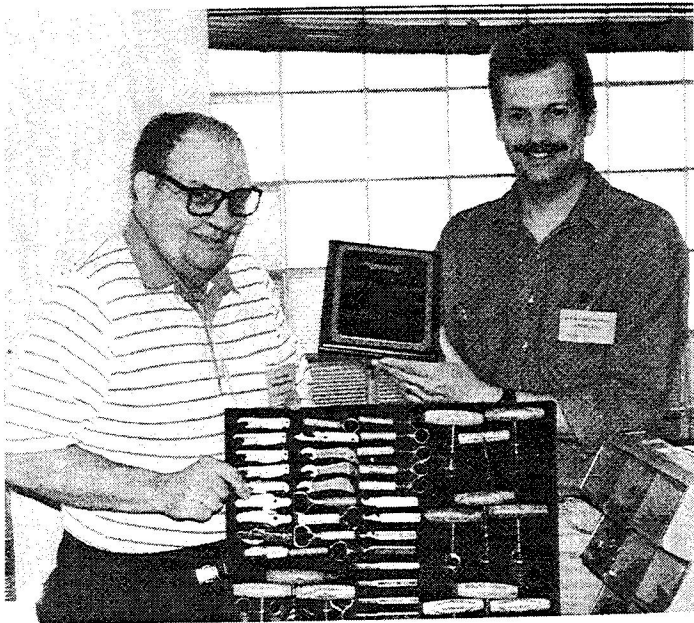


Bill Pattie, Robert Hedges and Dick Clark having a good time at the Show



Elayne Campbell watching the Big Smiling "Mr Pabst" Dick Creuziger

1998 Convention San Francisco, CA (Pictures-Continued) (April 22nd to 26th 1998)



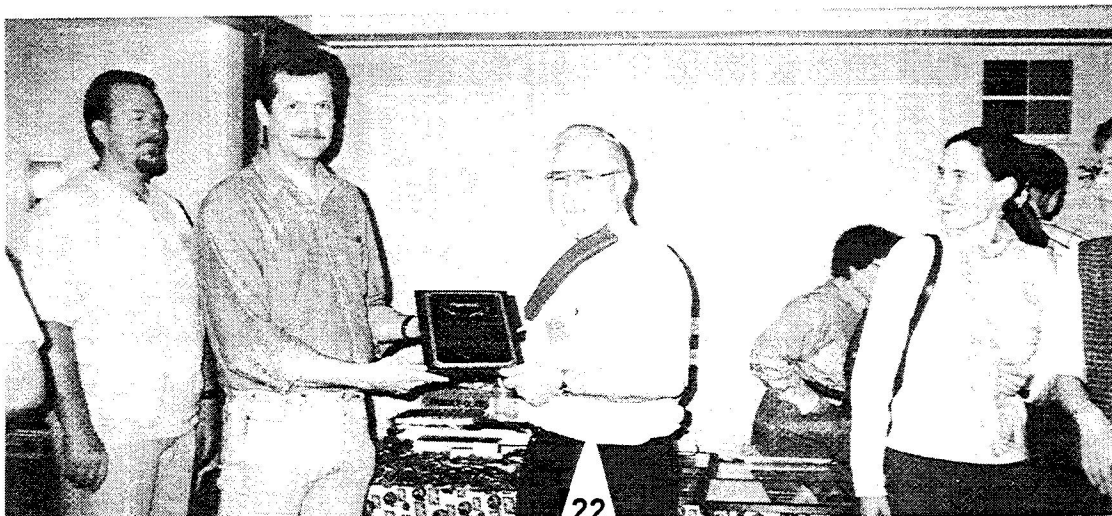
Bill Pattie winning 1st Place Display Contest

Vic Keown accepting 2nd Place Award

Fred O'Leary accepting 3rd Place Award

Don Whelan accepting "Best In Show Award"

All being accepted from John Cartwright



1998 Convention San Francisco, CA (Pictures-Continued) (April 22nd to 26th 1998)



The Bay Area's Finest
Rick Munoz, Jack Ford and John Cartwright

Some of the Saturday Show Traffic, not Bad!
Thank you Judy for getting Norm's coffee

Don Williams working on Tom Gormally

Marc and Benjamin all the way from North Carolina

Below Ollie Hibbeler is dealing LaVerne Vollrath
While in the background Dave Lendy gets
More lessons from the man himself, Norm Jay



1998 Convention San Francisco, CA (Pictures-Continued) (April 22nd to 26th 1998)



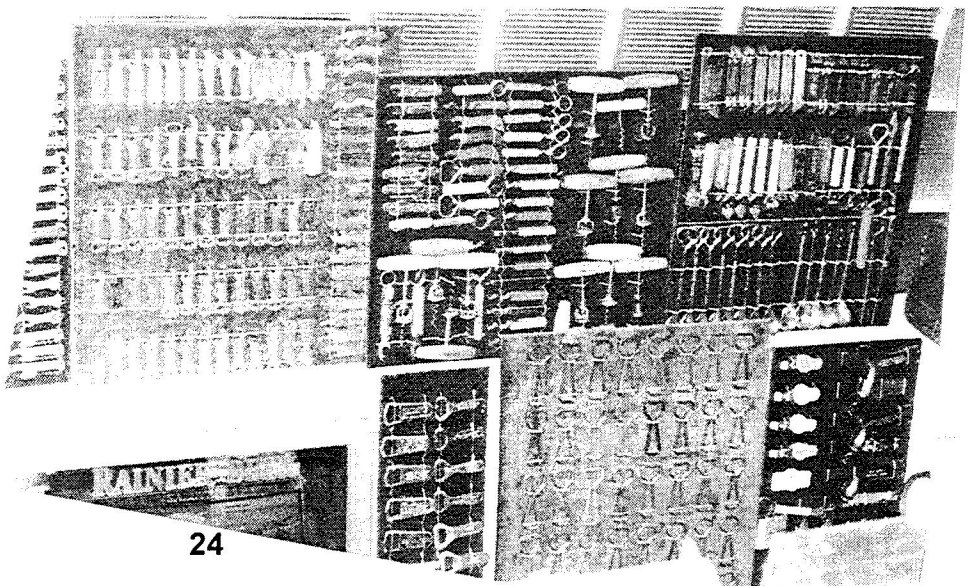
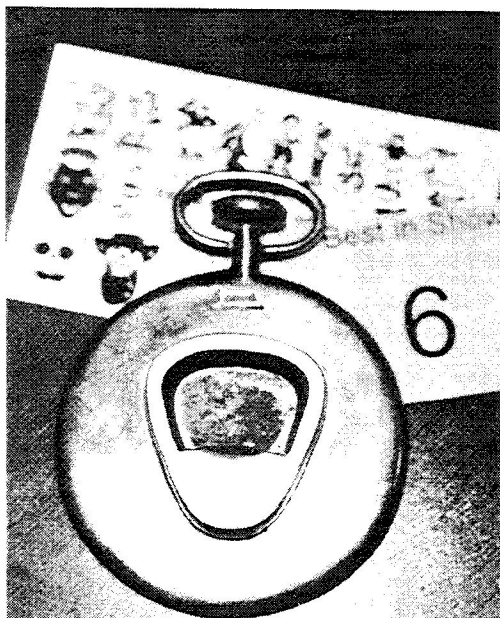
Cheryll and John Cartwright

**Norm Jay and Gary Deachman
(I think)**

**Herb White, Art Santen,
Robert & Leticia Hedges
At the Saturday Night Dinner**

Bill Pattie's Montana Display

**Sandra Emme's favorite
opener "Watch Case"**



1998 Convention San Francisco, CA (Pictures-Continued) (April 22nd to 26th 1998)



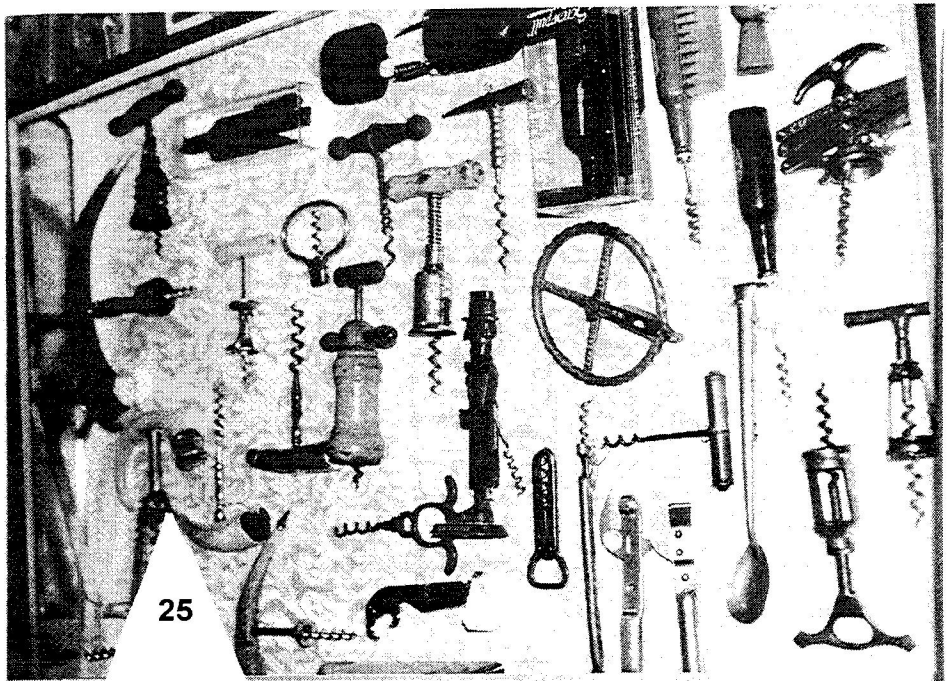
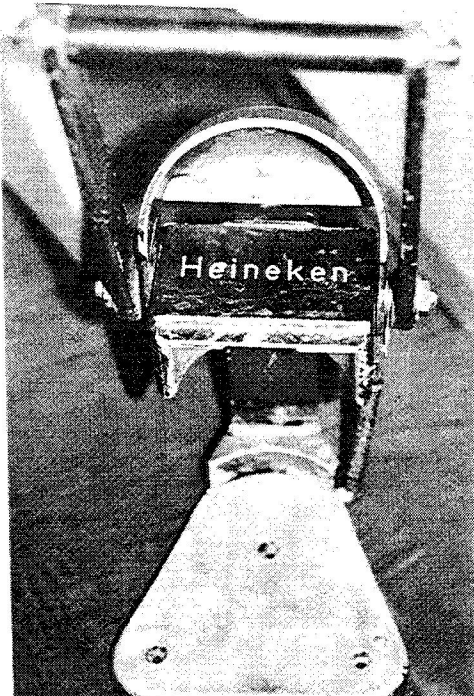
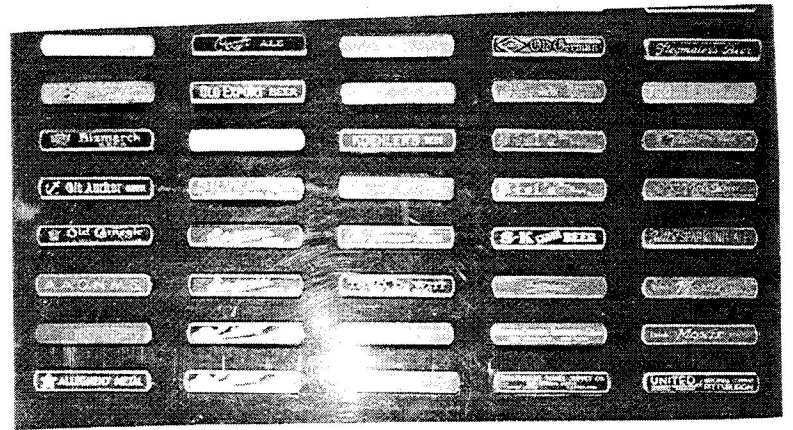
Pat and John Stanley

Art Santen's Display

Vic Keown's Display

Dean Walter's Corkscrews

Joe Young's Bar Mount



1998 Convention San Francisco, CA (Pictures-Continued) (April 22nd to 26th 1998)



John Stanley's Display

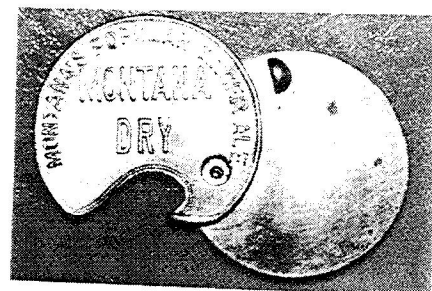
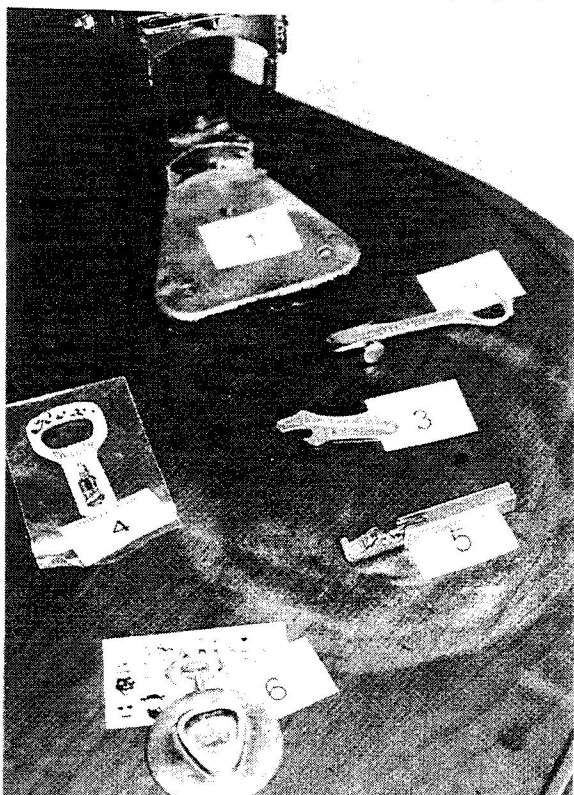
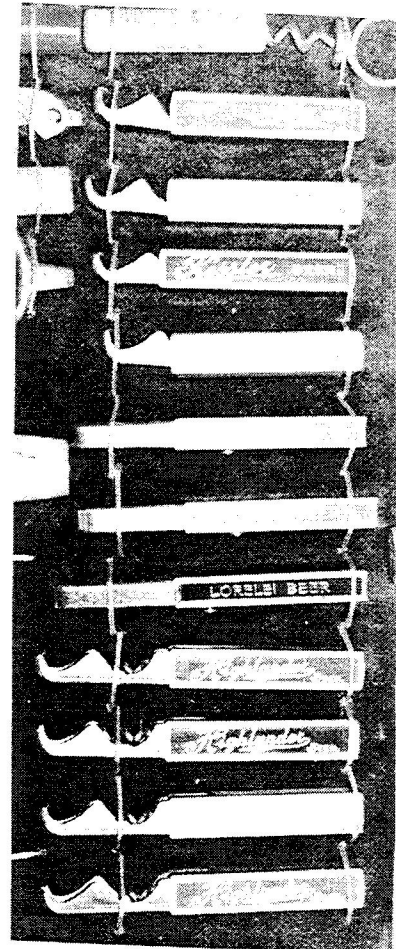
Bill Pattie's Montana M-73s (10 Beer and a Texaco)

Unusual M-3 Type Chicago World's Fair 1934

Don Whelan's M-73-14 Budweiser from Pinney Beverage

Bill Pattie's very unusual N-86 Nevin-Frank

"Best In Show Award" Displays (6 Entered)



1998 Convention San Francisco, CA (Pictures-Continued) (April 22nd to 26th 1998)

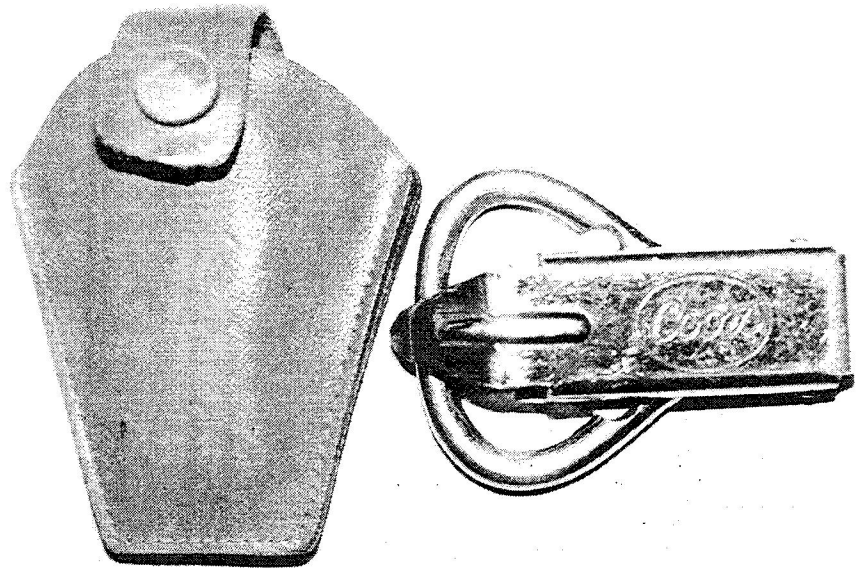
Saturday Night Dinner

Pat Benjamin
Marc Benjamin
Don Whelan
Tom Gormally
Phyllis Gormally
John Goff
June (Jay) Goff



Marge Stahly
Bob Stahly
Cora Whelan
Elayne Campbell
Bob Campbell
Dick Kreuziger

M-28-Coors
Very Hard to find with the Pouch
Thank you Harry Horn



Just For Openers Auction Guidelines

Please Note: Fee of 15% Will Be Charged on Consignments

This auction is a service to members of JFO. Consignments can consist of up to 20 openers (of course if you have more than 20 nice openers and/or corkscrews for the auction, I would consider auctioning the whole lot). I would appreciate anyone wishing to submit openers for the auction, write me first. Include a list of openers you wish to auction along with a condition for each item. If you wish to auction an item with a value of over \$30.00 I would be willing to place a reasonable minimum bid on the item. Any openers submitted for the auction should have a minimum value of \$5.00. I presently have many less than \$5.00 openers available for the auction. Money received for your openers is sent to you within 3 to 4 weeks of the closing date.

Please Write First Before Sending Consignment Material.

July New Members, Renewals, Address Changes & Corrections
--

Just For Openers now has 318 members (New Members: Numbers 874-881)

Mem #	Last Name	First Name	Spouse	Street	City	State	Zip	Phone/E-Mail	Specialties/ (Sponsor)
620	Asplund	Robert	Bette	32732 Early Rd (New Address)	New Carlisle	IN	46552-9674	(219) 654-7069	
621	Bailey	John	Marie	206 Rustic Dr	Crossett	AR	71635-4724	(870) 364-6339	
877	Boisa	David	Linda	7117 Castle Creek Way	Rio Linda	CA	95673-2442	(916) 991-7708	Bottle Openers and Old Cars (Harry Horn)
1	Bull	Don	Bonnie	PO Box 596 (New Address)	Wirtz	VA	24184-0596	(540) 721-1128 E-Mail corkskrue@aol .com	Corkscrews- All, Beer Advertising Knives & Beer Advertising Letter Openers
874	Cook	Sue	Bill	4226 Belfast Dr	Corpus Christi	TX	78413-3402	(512) 853-6550 E-Mail sadsacsue@aol .com	Openers Of All Kinds- New To Collecting.
765	Cower	Gary	Darlene	144 Lovejoy Rd	Harpursville	NY	13787-1832	(607) 693-2645	Any Bottle- Can Opener (Rejoin)
561	Dane	Richard	Pauline	3282 W 141st St	Cleveland	OH	44111-1401	(216) 671-2687	Opener (Rejoin-Art Santen)
879	Edwards	William	Mary Jo	11412 Rolling Springs Dr	Carmel	IN	46033-3636	(317) 846-5980	Soda Openers (Paul Gauvin)
379	Gach	Frank		8937 Mount Patapsco Ct (New Address)	Ellicott City	MD	21042-1856	(410) 465-9023	Openers, Beer Labels, Milk Bottles
881	Hassenmayer	Jim	Kathleen	311 Sarah Cir	Orange	CT	06477-3330	(203) 795-1116 E-Mail jhass252@aol. com	Openers (Ebay)
878	Jenkins	Tom	Betsy	16 Rima Ct	Danville	CA	94526-1959	(925) 838-0935	Openers (Vic Keown)
876	Kehring	Erwin	Shirley	8164 N Denmark Ct	Milwaukee	WI	53224-2999	(414) 354-7605	Openers (Verne Vollrath)
880	Krutz	Charles		5603 Colfax Ave	Alexandria	VA	22311-1009	(703) 820-9138	Foreign Openers, Lighters, Blob Tops (ABA)
664	McIntyre	W Don		PO Box 52	Friend	NE	68359-0052	(402) 947-6551	Nebraska Openers (Rejoin- ABA)
875	Pommerville	Robert		RR 1 Box 3-1	Oswegatchie	NY	13670-9722	(315) 848-3701 E-Mail ftroop@northn et.org	(Cymba/WW W)
694	Quimby	Chris		3405 Yeoman Ave	Vancouver	WA	98660-1176	(360) 693-3982	Soda Openers (Rejoin)
669	Schrank	Bill		1926 S 14th	Manitowoc	WI	54220-6108	(920) 686-1182	Hamms & Kingsbury Items (Rejoin)

Spouse's Corner

by Pat Stanley, the Editor's Spouse

John is trimming convention pictures tonight; tomorrow night we take them to have the half-tones made. That means I better be working on my corner, or I'll be in the corner.

Fortunately, I put the little Mauch Chunk Trust Company notepad Harold Queen donated in a safe place upon return, as my little scribbled notes are in that booklet. I'm quite amazed at how many people I talked to. Since, I did kind of wait 'til the Saturday show, people were sometimes a little pre-occupied when I showed up to suddenly take an interest in what they collect. I tried to hurry through my questions, and now some of my notes are not legible.....kind of like the inscriptions on some of the openers John *use* to settle for.

I went around asking everyone what their favorite Type A is. Much to my amazement, not everyone has a favorite A.

I absolutely had forgotten writing the last note. I was talking to Vern and LaVerne, who are always wonderful to be around. Verne talked about his favorite opener, the A47, which he got from a dealer. He said he got out easy way back then. Now are you ready??? Per my notes LaVerne said that she "likes tall men"!!! I'm sure that includes Vern and her handsome son who came to pick them up after the convention.

The first person I spoke to on Saturday concerning their favorite openers, was Chris Quimby. I do know that some of his less favorite openers are now in North Carolina! Chris likes sodas, the A-14 Bridge with Rainier Beer inscribed, the A-34 Powderhorn, then Lion Heads (which must be A-17s per the handbook). Some of you have seen the rubber stamp image of a powderhorn I had made up. It's a neat one.

And what is Larry Motor looking for? He likes Es, the E-23 Bohrer, at the moment. Okay, John, help me on this one. E-23s are not Bohrers, nor is there a name of beer like that listed. Should I wake John up???? Wouldn't he be thrilled that I want to talk about openers? (Editor's Note: E-23 Bohrer is UnListed).

Sure hope I find John Hall's favorite in the handbook, an A-12 from Sword, Pa. Oh, that's a little mixed up. The A-12 is a Sword. Perhaps he likes #15 from Allentown, Pa. Bob Stahly likes the A-12 too.

Maybe I better do one I feel sure I have right....What one do I like...The bronze moose, as I don't have it. There was a little mix up. I thought it was being held for me to buy, unless my dear husband got it for me. On my birthday, I just knew I would be getting the moose to match the silver one I actually purchased at the auction (even though John was advising me from the front of the room that it wasn't a beer...so what, I was bidding because it was a moose!). Well, no bronze moose for me. Perhaps the person who was bidding against me won out on that one??

When I asked Dick Crueziger what Type "A"s he likes, he said none. He does like Pabst and Coke. JFO members just know that we like him. He was a real sport on our evening walks to area restaurants.

Spouse's Corner (Continued)

Sandra Emme likes autos and baseball players, and anything from Washington, D.C. Ben Hoffman likes autos and baseball players too, but I can almost bet, he'd like them from PA.

I was suppose to send Joe Young an email for his response. I write Jackie all the time, but it's a little late to be asking Joe, since my column is due. (Editor's Note: Joe likes baseball players and Medford Dogs A-41s).

Norm Jay likes baseball players, all beer advertising. (Editor's Note: And Large Hotel Rooms).

Dave Pinney likes the A-5, even though it does not have an ad. It's from Pinney Beverage Co. that his parents owned in Salt Lake City.

Did you know that Bill Pattie likes A-9s. He also talked about Jacoby & Dow from Havre, Montana..per the handbook, that is not an A-9, but what it is, is not known to me. John, wake-up....(Editor's Note: It Ain't Known to Me Either).

Art Santen likes an Anheuser Busch, the A-62 as it's unusual, a race car. John, did Anheuser Busch make Budweiser...that's the only one listed. (Editor's Note: my wife has a long ways to go in learning brands, I mean Anheuser-Busch making Budweiser, for beer collectors that's the first thing you learn. Oh well someday she'll learn).

Another St. Louis collector, Vic Keown, likes the A-45 from Marion, Illinois, one of the first he got, from a Great Aunt.

Tom Gormally just told me the A-1-25 is the one, and he has one. Okay, I'll look it up in the handbook. Now I remember.....he likes the girls, and #25 is from New Jersey, where they currently live.

Deachman, first name not needed, likes the A-22 from Ballantine's as he does not have one. Look through your collections and give Gary a great deal!!

Don Whelan and Ollie Hibbler both vote for the A-10 from Kansas City, Muehlebach's Beer.

Next I got Marc Benjamin for a moment to find that he likes the A-43 Dixie as he is still looking for it.

And before I close, the Whelan's and the Hoffman's helped bring my wishes true by bringing me "turtle" openers. How thoughtful!!!!!!!!!!!!!! Some of the great people in JFO!!!!!!

Newsletter Content and Deadlines for Sending in Articles and Receiving Newsletter

	January Issue	April Issue	July Issue	October Issue
Newsletter Content	New Additions to Handbook	Membership Directory	Convention Highlights	New Discoveries
Articles	December 1st	March 1st	June 1st	September 1st
Receiving	January 31st	April 30th	July 31st	October 31st

AUCTION NEWS

Lynn Geyer's "Advertising Auctions". Main emphasis is on Breweriana (some openers). Cost is \$25.00. Advertising Auctions, 300 Trail Ridge, Silver City, NM, 88061 (505) 538-2341

Fink's Off The Wall Auctions. Main emphasis is on Breweriana (some openers). The cost is \$25.00. Finks Off The Wall Auctions, 108 E. 7th St., Lansdale, PA, 19446 (215) 855-9732

Nationwide Ad Auctions. Main emphasis is on Breweriana (some openers) and also separate Soda Auctions. The cost is \$13.00. PO Box 30244 Mesa, AZ 85275-0244 (602) 807-3609

OTHER CLUBS

American Breweriana Association (ABA)

offers a magazine (American Breweriana Journal) 6 times a year on breweriana collecting and an annual convention. Dues are \$25.00 per year. Contact Chris Galloway, Recording Secretary, P.O. Box 11157, Pueblo, CO, 81001

Canadian Brewerianist offers 10 issues per year (The Canadian Brewerianist) on Canadian Breweriana collecting and an annual convention. Dues are \$23.00 per year (US Funds). Contact Loren Newman, 2978 Lakeview Trail, Bright's Grove, Ontario, CANADA, N0N 1C0

Canadian Corkscrew Collectors Club (CCCC)

offers a quarterly newsletter (The Quarterly Worme) on corkscrew collecting and an annual convention. Dues are \$30.00 per year. Contact Milt Becker, P.O. Box 9863, Englewood, NJ, 07631

East Coast Breweriana Association (ECBA)

offers a quarterly newsletter (The Keg) on breweriana collecting and an annual convention. Dues are \$20.00 per year. Contact John Stanley, PO Box 64, Chapel Hill, NC 27514-0064, (919) 419-1546

MICROBES (Micro Chapter ECBA): offers a quarterly newsletter on Micro Breweriana. Dues are \$7.00 per year. Contact Roger Levesque, PO Box 826, South Windsor, CT 06074

Figural Bottle Opener Club (FBOC) offers a quarterly newsletter on three-dimensional and either free standing or wall-mounted openers and an annual convention. A full color guide book is offered for \$28.00. Dues are \$20.00 per year. Contact Charles Lesser, 1953 Sugar Stick Rd., Harrington, DE, 19952, (302) 284-4792

National Association Breweriana Advertising (NABA)

offers a magazine (The Breweriana Collector) 4 times a year on breweriana collecting and an annual convention. Dues are \$20.00 per year. Contact Robert Jaeger, 2343 Met-To-Wee Lane, Wauwatosa, WI, 53226

SHOWS & CONVENTIONS (Sources For Openers and Corkscrews)

1998 Jun 15-21 – 17th Annual ABA Convention – Eau Claire WI – ABA Members Only except for Saturday Public Show . Contact Stan Galloway, Executive Director, P.O. Box 11157, Pueblo, CO, 81001

1998 Jul 15-19 – 26th Annual ECBA Convention – Rochester NY – ECBA Members Only except for Saturday Public Show . Contact John Stanley, PO Box 64, Chapel Hill, NC 27514-0064, (919) 419-1546

1998 Aug 5-9 – 27th Annual NABA Convention – Columbus OH– NABA Members Only except for Saturday Public Show . Contact Robert Jaeger, 2343 Met-To-Wee Lane, Wauwatosa, WI, 53226, (414) 257-0158

1998 Oct 22-24 – 16th Annual Midwest Breweriana Show – Omaha NE– JFO Members welcomed . Contact John Mlady, 1506 S 25th St, Omaha, NE, 68105-2611, (402) 345-7909

1999 Feb 11-14 – 20th Annual Blue & Gray Breweriana Show – Fredricksburg VA – All JFO Members Welcomed . Contact: John Fisher, PO Box 153, Benedict, MD, 20612-0153, (301) 274-3340

1999 Apr 21-25 – 21th Annual Just For Openers Convention – Naples FL– All Opener and Corkscrew Collectors Welcomed . Contact: Bob McNary, 14 Apple Tree Ln, Naples, FL, 34112-7203, (941) 774-0472

WANTED (Please remember there is no charge for Ads)

Members to Swap Openers for Openers, Trade List for Trade List. People who are starting out like myself who want to build their collections from other members in different parts of the country.
Write or Call Scott Sherman, W5268 Quarry Rd Appleton, WI, 54915, (414) 954-1168

A-1-9 Golden Glow, B-23-149 Golden Glow, E-9-111 Golden West & O-4-22 Golden Glow. Also any Breweriana from Rainier Brewing Co (Seattle WA,LA,SF), Golden West Brewing Co. of Oakland, CA & Port Townsend Brewing Co. of Port Townsend, WA. Buy or Trade. John Cartwright, 950 Marlene St Apt B, Ukiah, CA 95482

Please Help Me Upgrade My Collection. How? Will trade my poor condition A-9-15 Excelsior, A-9-32 Fried and A-9-33 Rainier for your good or better ones---and \$\$\$C-A-S-H\$\$\$.
Ed Kaye, 7077 Cedarhurst Dr, Fort Meyers, FL, 33919, Call Collect (941) 590-3068

Any: A-34 (Beer or Non-Beer), Beer: A-42, B-6, B-7, B-22, B-31,G-5. Soda Openers (Esp Coca-Cola & Pepsi-Cola). H-1s: 7,8,9,12,21,23,24,26,27,28,31,34,35,39,41,42,44. 0-1: 1,2,3,5.
Write for latest trade list. John Stanley, PO Box 64, Chapel Hill, NC 27514-0064, (919) 419-1546

Need These Types: A-22-1 Ballantine and C-1-7 Budweiser.
Great Trades Available. Jack Ford, 5351 Boyd Ave, Oakland, CA, 94618, (510) 655-5393

A-43-Dixie Beer & M-49,M-60,M-64,M-89,M-111,M-112,N-15,N-45,N-81,N-83,N-86,N-90. Want to buy straight out.
Marc Benjamin,167 Nixon Beach Rd,Edenton NC 27932,(919) 482-2099

B-45, B-66, I-7, P-72, P-100, R-14 types with a Corkscrew (Beer/Non-Beer) and Silver Top Beer Openers.
Herb Danziger, 550 Cherry Ct, Birmingham, MI, 48009-1459, (810) 646-9470

Beverwyck-B-18-499,B-21-147,C-10-48,E-9-87,F-6-87,I-2-2,I-14-1,J-5-5a, Dobler-I-11-232,I-18-6, Fitzgerald-C-20-12,I-12-23,I-18-9, Hedrick-E-9-55, Hinckel-P-30-1, Quandt-P-8-118,P-35-2, Stanton-A-20-13,C-12-103,C-18-24, Isengart-E-8-59, Stoll-B-18-380,E-8-107, Misc-A-28-40. Want to Buy.
Bill Laraway, 627 Kenwood Ave, Delmar,NY, 12054, (518) 439-2739

Bond and Lillard Openers (would like to buy). Have A-29, would like any others. Lillard is a family name.
George Love, 4301 Forest Plaza Dr, Hixson,TN, 37343, (423) 877-6006

C-2-6 Valley Forge, B-28 Howell & King, B-37 DuBois, and F-16 Wacker. Cash or Trade.
My **A-11-1 Wooden Shoe (EX) for Harley-Davidson Bike and Goodyear Airplane Figurals.**
Tony Zanghi, 2225 Deer Trail Rd., Coopersburg, PA, 18036, (610) 346-8232

"E"s! Have Trade List (various types) to send for "E"s that I need or will buy.
Larry Moter, 10149 Michaels Rd, Woodford, VA, 22580, (804) 448-3928

E-2-19 Yuengling Por-Tor (Will trade heavy for this opener or pay cash).
Harold Queen, 1001 Centre Ave, Jim Thorpe, PA, 18229, (717) 325-2612

"E" Type Openers Wanted. Will Trade my "C", "E" and "I" Types. Please send list of what you have and I'll send my list. Ralph Tewksbury, 84 Wildwood Dr, Parkersburg, WV 26101 (304) 863-3627

"E" List-Extensive-For Trade or Sale. Send Me Your List and Maybe We Can Work a Sale or Trade.
Tom Gormally, 100 Nelson Pl, Westfield, NJ 07090, (908) 233-8867

H-8-5 Esslinger "Little Man Standing", H-8-19 Atlantic (Beer Garden Scene), L-1-5 Pabst and L-1-8 Manns.
Have some traders. Harry Horn, 3113 Smoky Ct, Sacramento, CA, 95826, (916) 362-3590

DO THEY REALLY EXIST? I still want I-7-82,46,54,68,34,58,9,56 or any tough I-7s in VG/Better condition. Will cut the chase and offer cash for your openers. Tony Ricicki, 9 Laird Terrace, Somerset, NJ, 08873, (908) 873-0301

I-7 Beer or Non-Beer Openers. I'm interested. Extensive trade list or cash.
Hale Milano, 506 Springhouse Road, Camp Hill, PA, 17011-1454, (717) 737-5067

"I"-Types: Will send 10 "I" types from Wisconsin breweries to anyone with openers from states other than Wisconsin & Illinois. Will trade for what you think is equal value.
Darwin Wilcox, 8495 Croix Tr, Roscoe, IL, 61073, (815) 623-2255

WANTED (Continued) (Please remember there is no charge for Ads)
--

Interested in obtaining Breweriana of Stag Beer, brewed in Belleville, IL. Also interested in obtaining Beer Tap Handles (Markers) for collection I share with my grandson.
Jack Westall, 5945 Shallow Creek Dr, Milford, OH, 45150, (513) 248-1127

M-3s #40,23,24,25,41,26,39,33,36,34,42,37,6,43 Non-Beer M-3s #2,5,6,7,8,9,13,14,16,17,19,20,21,22,23,25
Vic Keown, 10547 Mert Ave, Saint Ann, MO, 63074, (314) 428-6343

O-5 Openers. Send for list. Buy or Trade. Top \$\$\$.
Steve Owen, 1175 Elkins Lake, Huntsville, TX 77340 (409) 295-3329

P-19-10 Kalispell, P-18-3 Washoe, P-31-6 Eureka, Purchase or Trade. Have P-19-2 Townsend, M-73 Highlander Sliders (Red), and many other P's for trade. **Trade M-73 Highlander (Red) for M-73 Kessler (Blue).**
Bill Pattie, 37050 SE 89th St., Snoqualmie, WA, 98065, (206) 888-2496

P-20-2 Valley Forge (have L-2-1 and L-2-2 Anheuser Busch for trade or sale). Also M-3-27 Trommers, M-3-39 Hialeah, M-3-42 Seitz. Ben Hoffman, 213 Simmons Rd, Perkiomenville, PA, 18704, (610) 287-8243

Louisiana Brewery Openers: Old Union, 4-X, New Orleans, Dixie, Regal & Jax.
Ed Broders, 10220 Westwood, Baton Rouge, LA, 70809, (504) 293-2373, ebrodgers@franklin-press.com

Cigar Box Openers: SHM-2,8,10,11,13,14 DHM-13,14,15,16 RBO-3,9,12 HOR-2,3 RND-6,8,9,10 SQR-1,4 NL-6 BB-1,6,19 BUT-2,4 PKT-1,5,6,8,9,10 SEP-2,6,7,8,9 MIS-4,6,7,10,11. Will purchase or trade from 600+ collection. **(Types from the Cigar Box Opener Handbook copies available from Mike for \$3.00 which includes mailing)**
Mike Schwimmer, 325 E. Blodgett Ave., Lake Bluff, IL, 60044-2112, (847) 295-1901

Cigar Box Openers-Will Buy or Trade for other C.B.O.s or Beer Openers.
Glen Enloe, 805 Teepee Dr, Independence, MO, 64056, (816) 796-9965

Connecticut Openers Wanted: Write for want and trade lists.
Paul Gauvin, 24 Strawberry Ln, Manchester, CT, 06040, (860) 646-9722

Corkscrews-Cork Pullers-Syroco (especially Golden Knight and Clown)-Early US Patents-Anything Unusual. Pay competitive price in trade or cash. Have many corkscrews to trade. Please send description, sketch, photocopy, etc to Paul Luchsinger, 1126 Wishart Place, Hermitage, PA, 16148 (Tel/Fax 724-346-2631)

Corkscrews and Tin Can Openers: Have Beer Openers for Trade.
Joe Young, 36 S. Weston Ave., Elgin, IL, (847) 695-0108

Corkscrews, Beer Advertising Letter Openers, Beer Advertising Knives, & Postcards depicting Corkscrews. Please send description, photo, sketch, photocopy, or tracing of what you have and advise price wanted.
Don Bull, PO Box 596, Wirtz, VA, 24184, (540) 721-1128

Corkscrews: Esp. Figural, Syroco, Thomason, Bakelite; also Wine Ephemera (Ads, Postcards, Labels, Grape Box Labels, Etc.); and Bakelite Anything. Buy Straight Out.
Abby Nash, 172 Bush Lane, Ithaca, NY, 14850, (607) 266-0690

Corkscrews: Esp. Walker's "Waiters & Hallboys" and old Williamson wire shafted "T"s with attachments to wood handle (such as brushes/wire cutters). John Vlossak, 1044 East Eldorado St., Appleton, WI, 54911, (414) 739-2789

Dixie Beer Openers: B-19-199, E-6-133, I-11-169, I-12-17, I-22-21, N-2-2. Do they really exist? Wish to purchase.
Lew Burritt, 125 Vogt Dr., Belle Chasse, LA, 70037, (504) 394-3567

From the Enterprise Brewing Co of Fall River, MA: A-20-47, B-18-26, B-21-430, C-12-135, E-13-35, E-14-526, E-14-779, I-11-13, J-1-1, and N-22-1. Dave Dubrul, 88 Linden Terrace, Burlington, VT, 05401, (802) 864-2089

"F" Type Beer Advertising Openers, Beer Advertising Letter Openers, Beer Advertising Match Safes and Beer Advertising Knives (with or without openers on them). Larry Biehl, 448 Crandon, Calumet City, IL, 60409

Idaho and Montana Beer Openers, especially from Kessler Brewing Co of Helena, MT and Sunset Brewing Co of Wallace, ID. Newer collector looking to expand current collection.
Steve Armstrong, PO Box 1938, Orofino, ID, 83544, (208) 476-0128

WANTED (Continued) (Please remember there is no charge for Ads)

Openers from Jamestown Brewing Co, Kuhn's Beer, Chautauqua Brew, Monessen, PA, Independent Brewing Co, Schaefer, & all Cleveland Beers. Ed Schaefer, 366 Bassett Rd., Bay Village, OH, 44140, (216) 871-0449

Lexington Brewery (Dixie Beer) & Coca-Cola Openers. Want to buy any figurals or unusual older examples of these. Also looking for old manufacturer's brochures or catalogs (originals or copies of). Thom Thompson, 123 Shaw Ave., Versailles, KY, 40383, (606) 873-8787

Louisiana Brewery Openers from the following breweries: Old Union, 4-X, New Orleans Brewing Co., Dixie, Regal & Jax. Ed Broders, 10220 Westwood Ave, Baton Rouge, LA, 70809, (504) 293-2373

"M-1 & M-2" Lithographed Openers (Excellent Condition Only) by beginning collector. Also Openers or Other Related Items to any Jung Breweries. Paul Jung, PO Box 425, Bechtelsville, PA, 19505, (610) 367-0239

New York Openers: E-4-345 Koch, E-4-331 Bartels, E-14-152 Horton, G-1-52 Pilsers, C-13-182 NBC. I have many great openers to trade. Mark Barren, 6141 Tachi Dr., Newfane, NY, 14108-9517, (716) 778-9724

P-1-2 Anheuser-Busch Corkscrew & \$45 for P-73-3 FD Radeke Brew Co or P-89-1 Banner Brewing Co or P-97-1 National Brewery Co. Ollie Hibbeler, 298 Highline Road, Lake Ozark, MO, 65049

TYPES (Beer) A-11,22,36,37,39,40,42,48,49,50,51,53,54,55,56 B-9,26,28,34,37,41,43,44,45,46,48,50,51,61,66,67, 68 C-40,44 D-7,8,10,11,13,14,16 E-26,27 F-11,16,26 G-3,10,11,19,33,35 H-9 I-25 M-14,22,48,49,50,61,64,65,66,67, 68,69,70,71,72,75,76,78,79,80,84,85,86,87,88,89,90,91,92,93,94,95,96,97 N-1,7,15,16,18,19,21,28,45,46,55,57,70 O-6,11,12,13 P-11,12,21,30,65,67 R-6,8,10. Gary Deachman, PO Box 438, North Woodstock, NH, 03262

WASHINGTON D.C. Openers and/or Corkscrews. Also figural corkscrews. Sandra Emme, PO Box 1454, Upper Marlboro, MD, 20773, (301) 627-8207

West Virginia Openers (B-7-12, B-18-110, and H-4-3), also Southern US Beer openers and corkscrews. Roger Jarrell, 1500 Sedwick Rd., Durham, NC, 27713, (919) 544-7787

Wooden Shoe (Minster, Ohio) and Sebald (Middletown, Ohio) Brewery Items. Jim Stork, 7504 Parliament Crt, West Chester, OH, 45069

SELLING (Please remember there is no charge for Ads)

"250 Different Beer "I"s and "J"s". First \$200.00 (includes postage) gets openers. Lot includes 7 "I-1"s, 4 "I-3"s, 12 "I-4"s, 2 "I-5"s, 12 "I-6"s, 6 "I-7"s, 62 "I-11"s, 42 "I-12"s, 8 "I-13"s, 4 "I-14"s, 8 "I-15"s, 6 "I-16"s, 35 "I-17"s, 3 "I-19"s, 4 "I-20"s, 3 "I-22"s, 5 "J-3"s, 20 "J-5"s, 7 "J-6"s. John Stanley, PO Box 64, Chapel Hill, NC 27514-0064

"Openers (Beer and Otherwise), Corkscrews and Figurals For Sale". Send SASE (2 Stamps Business Size). Carl T. Jantos, 7025 Kevin Drive, Bethel Park, PA, 15102-3913

Beer and Soda Openers For Sale. Send SASE for List. John Fisher, PO Box 153, Benedict, MD, 20612-0153

Figural Bottle Openers For Sale. Send SASE (Business Size) for List using FBOC Numbers. FBOC Book and new price guide \$25.00 postpaid. Sandra Emme, PO Box 1454, Upper Marlboro, MD, 20773, (301) 627-8207

All Sales (Add Postage) L-12-1 Budweiser \$5, L-12-UL Bud Light \$5, L-ND (Penguin) Bud Ice \$5, Q-27-15 Budweiser, Q-27-UL Bud Light, Q-27-UL Busch, Q-31-42,61,62, Q-36-23, Q-36-UL Natural Ice All \$1 Each, Q-45-UL Budweiser, Michelob, O'Douls \$3 Set of 3, Q-53-1,2,3,4,5 \$10 Set of 5, Q-ND Round Twist Off-Budweiser, Bud Ice, Bud Light, Busch \$3 Set of 4, Cigarette Lighter & Opener-ND Lite, Miller, Red Dog, Miller Genuine Draft \$8 Set of 4. Art Santen, 6126 McPherson, St Louis, MO, 63112

L-1 Collection of Foreign Openers. (1) Captain Morgan-Black Label-Jamacian Rum, (2) Charrington Pale Ale, (3) Double Diamond-Brewed At Burton, (4) Guinness-Extra Stout-Dublin & London, (5) Manns-The Best Brown Ale, (6) White Horse-Scotch Whiskey. \$90+S&H.OBO. Jack Little, 9531 Sandstone Dr, Sun City, AZ, 85351

"American Breweries II": by Dale Van Wieren. Over 18,000 entries for nearly 8,000 brewing firms, tracing names, addresses, and dates of operation. (\$28 1st Class). John Stanley, PO Box 64, Chapel Hill, NC 27514

Results of April 1998 JFO Auction Closing May 19, 1998

1	A-001-001	ARGONAUT	26.50	55	B-021-469	JETTER	26.00	99	E-004-008	ATLAS	7.50
2	A-001-008	GLOBE	24.52	56	B-022-024	BOWLER BROTHERS	20.50	100	E-004-010	ATLAS	1.53
3	A-001-016	MONTANA	16.09	57	B-023-059	ATLAS	12.50	101	E-004-014	BLATZ	5.50
4	A-001-021	EL CAPITAN	12.50	58	B-023-999	MOLSON	10.00	102	E-004-018	BUSHKILL	8.50
5	A-001-023	GRAFS	61.06	59	B-024-001	ACME	10.50	103	E-004-026	COORS	0.13
6	A-001-033	AMERICAN	26.00	60	B-024-005	BURGERMEISTER	10.50	104	E-004-033	FALLS CITY	8.50
7	A-001-047	SANTA CRUZ	35.00	61	B-024-013	GB	10.50	105	E-004-037	GENERAL	13.77
8	A-001-999	PARFAY	10.00	62	B-053-999	BALL SHOE REPAIR	10.00	106	E-004-038	GLOBE	1.09
9	A-002-999	MIKE MEADOR	10.00	63	B-070-999	(BLANK)	35.00	107	E-004-040	GOLDEN WEST	12.00
10	A-002-999	JOHNSONS LIQUOR	10.00	64	C-004-001	PABST	2.00	108	E-004-047	HUDEPOHL	10.50
11	A-004-015	LEISY	22.65	65	C-006-004	PABST	10.50	109	E-004-049	INDEPENDENT	7.00
12	A-005-074	MASTERBRU	25.50	66	C-007-001	UTICA CLUB	8.83	110	E-004-054	LIEBMANN	9.25
13	A-005-999	DAVISON OIL	10.00	67	C-007-001	UTICA CLUB	9.63	111	E-004-055	LION	3.77
14	A-008-001	RUPPERT	21.75	68	C-009-003	BLATZ	8.50	112	E-004-061	MILLER	3.56
15	A-012-001	BURGERMEISTER	23.50	69	C-009-031	VALLEY FORGE	15.00	113	E-004-062	MILLER	3.00
16	A-015-004	COOK	5.50	70	C-010-026	EMPIRE STATE	25.30	114	E-004-065	NEUWEILER	4.00
17	A-015-019	FREMONT	26.00	71	C-010-027	GRAF	7.03	115	E-004-068	PRIMA	4.00
18	A-021-002	BLATZ	9.93	72	C-011-004	BLATZ	8.77	116	E-004-117	GOETZ	7.00
19	A-021-026	HOCH BRAU	21.30	73	C-012-121	HOP GOLD	25.30	117	E-004-136	REGAL AMBER	3.77
20	A-021-042	MOOSE	20.50	74	C-013-119	YOERG	22.05	118	E-004-139	RHINELANDER	9.50
21	A-021-999	HIXSON CAFÉ	5.30	75	C-013-208	COORS LIGHT	2.09	119	E-004-215	BROADWAY	22.89
22	A-021-999	WEAVER MOTORS	5.30	76	C-020-025	ELIZABETH	15.30	120	E-004-337	SCHLITZ	15.76
23	A-023-001	BLACKHAWK	20.11	77	C-032-003	ENTERPRISE	9.68	121	E-006-008	BURKHARDT	15.76
24	A-027-001	DOELGER (MIN \$60)	111.11	78	C-042-001	BUSCH	9.37	122	E-006-109	JORDAN	11.89
25	A-029-005	PABST	13.55	79	C-999-999	SODA C-LOT 1) C-9 C&C 2) C-9 SARATOGA 3) C-6 CANADA DRY 4) C-41 CANADA DRY 5) C-9 WHITE ROCK 6) C-13 ORANGE CRUSH 7) C-12 CANADA DRY 8) C-12 CANADA DRY 9) C-14 CANADA DRY 10) C-13 CANADA DRY 11) C-13 SARATOGA	40.03	123	E-006-140	JENNER SPRINGS	15.76
26	A-029-007	RAINIER (Tie Bid)	11.00	80	CBO-HBO-12	BARCALO-BUFFALO	0.00	124	E-007-001	ATLAS	11.89
27	A-029-014	POTOSI	8.50	81	D-001-014	FAUERBACH	4.50	125	E-007-052	TIVOLI	15.00
28	A-034-002	7TH ST MALT (MIN \$50)	133.00	82	D-002-010	PERFECTION	4.65	126	E-007-078	MANHATTAN BOTTLING	10.00
29	A-035-999	SHENANDOAH TIRE	10.00	83	D-003-013	SCHOENHOFEN	9.76	127	E-007-999	HOWDY	10.00
30	A-036-999	SOMMERS HOME OIL	27.07	84	D-003-999	CROWN CORK	1.01	128	E-008-059	ISENGART	9.11
31	A-053-999	ELK CENT. SD	10.00	85	D-005-002	BLATZ	5.75	129	E-008-110	REIF	36.00
32	A-056-001	MILLER	20.77	86	D-005-004	COOK	5.50	130	E-008-999	O'KEEFE	7.73
33	B-002-004	FEIGENSPAN (STEEL)	20.00	87	D-005-012	POINTER	6.50	131	E-009-999	MOXIE	15.00
34	B-002-006	HAMM	12.53	88	D-006-001	BRUCK	15.50	132	E-011-001	ATLAS	3.77
35	B-002-007	KRUG (STEEL)	55.05	89	D-009-004	KINGSBURY	5.50	133	E-011-003	ANHEUSER-BUSCH	2.00
36	B-002-010	OLD MISSION	31.00	90	D-009-008	OSHKOSH	6.71	134	E-011-005	BUDWEISER	2.05
37	B-013-042	BLATZ	16.85	91	D-009-011	ZOLLER	6.50	135	E-011-006	KAIER	0.00
38	B-013-106	VERIBEST MALT	16.75	92	D-009-018	HARDING	15.00	136	E-011-007	KAIER	9.50
39	B-014-028	HAUENSTEIN	10.10	93	E-001-014	TROMMER	7.00	137	E-011-008	KAIER	5.15
40	B-014-055	MINNEAPOLIS	7.10	94	E-001-032	JOLIET CITIZENS	18.76	138	E-011-012	SCHOENHOFEN	5.00
41	B-014-139	GOLDEN GLOW	5.53	95	E-002-017	PROGRESS	18.76	139	E-011-013	STEGMAIER	1.89
42	B-014-141	HAGEN-BECKER CO	6.50	96	E-003-013	KAMM	3.37	140	E-014-001	A B C	5.00
43	B-014-999	REGINA	2.26	97	E-003-064	GREAT FALLS	22.99	141	E-014-002	A-1	4.00
44	B-018-022	DUBUQUE	1.03	98	E-004-005	ARROW	8.50	142	E-014-005	ACME	4.50
45	B-018-045	MANITOWOC PRODUCT	5.50					143	E-014-015	BAVARIAN	5.00
46	B-018-046	METZ BROS	23.00					144	E-014-019	BECKER	4.00
47	B-019-007	DICK BROS	10.50					145	E-014-022	BILLINGS	15.09
48	B-019-012	GUND	6.65					146	E-014-024	BLACKHAWK	6.00
49	B-019-018	HEIDEL BRAU	22.00					147	E-014-026	BLATZ	4.00
50	B-019-019	KING	5.53					148	E-014-032	BRUCKS	5.50
51	B-019-170	MINNEAPOLIS	5.00					149	E-014-036	BURGERMEISTER	5.50
52	B-021-062	OLD STANDARD	5.53					150	E-014-046	COLUMBIA	2.56
53	B-021-063	QUANDT	20.00					151	E-014-050	COORS	0.00
54	B-021-097	BLATZ	20.00					152	E-014-059	DICK BROS	5.00
								153	E-014-060	DUBOIS	7.00
								154	E-014-063	DUQUESNE	1.56
								155	E-014-068	EASTSIDE	6.50
								156	E-014-069	EASTSIDE	2.03
								157	E-014-081	FALSTAFF	0.53
								158	E-014-086	FESSENMEIER	1.03
								159	E-014-090	FITGER	8.85

160	E-014-095	FOX HEAD	7.50
161	E-014-100	G B	5.50
162	E-014-108	GLUEK	4.26
163	E-014-110	GOETZ	2.03
164	E-014-112	GOETZ	5.00
165	E-014-113	GOLDEN GLOW	3.09
166	E-014-117	GRAIN BELT	0.00
167	E-014-118	GRAIN BELT	10.21
168	E-014-125	GREAT FALLS	3.75
169	E-014-127	GRIESE DIECK	5.00
170	E-014-128	GRIESE DIECK	1.05
171	E-014-131	HABERLE	12.21
172	E-014-135	HAMM	4.05
173	E-014-138	PETER HAND	3.50
174	E-014-162	KEELEY	4.00
175	E-014-163	KESSLER	7.73
176	E-014-167	FRED KOCH	0.00
177	E-014-176	LONE STAR	4.00
178	E-014-177	LUCKY	3.00
179	E-014-178	LUCKY	12.77
180	E-014-179	MAIER	5.00
181	E-014-181	MANKATO	10.21
182	E-014-185	METZ (Tie Bid)	5.00
183	E-014-186	METZ	5.00
184	E-014-192	MONTEREY	11.60
185	E-014-193	MUEHLEBACH	4.00
186	E-014-208	OLYMPIA	0.00
187	E-014-219	PHOENIX	4.00
188	E-014-226	QUEEN CITY	3.50
189	E-014-228	RAINIER	5.50
190	E-014-230	RAMS HEAD	3.65
191	E-014-237	REGAL PALE	3.59
192	E-014-249	SAN ANTONIO	7.73
193	E-014-257	SCHLITZ	5.00
194	E-014-261	SCHMIDT	10.71
195	E-014-264	SCHMIDT	0.00
196	E-014-266	SHERIDAN	4.00
197	E-014-267	SOUTHERN SELECT	0.00
198	E-014-284	TIVOLI	5.00
199	E-014-289	UNITED STATES	5.00
200	E-014-299	WIEDEMANN	5.00
201	E-014-300	WIEDEMANN	8.83
202	E-014-314	ARIZONA	9.00
203	E-014-319	BECKER	7.00
204	E-014-333	BUDWEISER	8.83
205	E-014-343	COOPER	7.76
206	E-014-356	FALSTAFF	3.04
207	E-014-373	GRAUPNER	5.00
208	E-014-374	SICKS	5.00
209	E-014-388	KARLSBRAU	5.00
210	E-014-391	KIEWEL	7.73
211	E-014-419	PEARL	8.83
212	E-014-429	REGAL PALE	7.73
213	E-014-455	WALTER	4.00
214	E-014-461	BALLANTINE	7.01
215	E-014-470	BLATZ	1.50
216	E-014-504	GREATER NEW YORK	35.00
217	E-014-530	OSHKOSH	4.76
218	E-014-536	RAINIER	12.00
219	E-014-543	GOLD SHIELD	7.73
220	E-014-559	STERLING	4.00
221	E-014-614	HORNELL	6.21
222	E-014-614	HORNELL	6.21
223	E-014-623	METZ	7.73
224	E-014-653	WARSAW	15.79
225	E-014-697	SCHMIDT	1.05

226	E-014-705	OERTEL	2.56
227	E-014-999	SODA 1) ADELES 2) GIANT COLA 3) ROYAL CROWN 4) RED ROCK 5) ROCK SPRING	20.50
228	E-014-999	SODA 1) WHITE ROCK 2) BIG-GIANT 3) TRU-ADE 4) KECK'S 5) LOTTA COLA 6) VERNOR	25.50
229	E-014-999	SODA 1) RITZ-E 2) ROYAL CROWN 3) SPARKLETT'S 4) BUBBLE UP 5) LEMMY	20.15
230	E-014-999	SODA 1) VESS 2) BIRELEY ORANGE 3) COCA-COLA 4) DAD'S 5) DOUBLE-COLA 6) MISSION ORANGE	24.15
231	E-014-999	SODA 1) COCA-COLA 2) BARQ'S 3) PHILLIPS 4) MISSION 5) K S FRUIT	20.15
232	E-014-999	SODA 1) BIRELEY'S 2) NESBITTS 3) KIST 4) B-1 LEMON-LIME 5) ROYAL CROWN	24.15
233	E-999-999	SODA 1) E-14 SIMPSON SPRING 2) E-14 HUSTING'S 3) E-9 CLICQUOT CLUB 4) E-9 INDIAN CLUB 5) E-9 GOSMAN'S	20.15
234	F-002-002	BLATZ	15.50
235	F-002-999	WHITE ROCK	6.00
236	G-001-004	BUCKEYE	3.50
237	G-001-007	EBLING	6.03
238	G-001-009	ESSLINGER	18.00
239	G-001-010	FOX HEAD	4.00
240	G-001-012	GRAND PRIZE	11.00
241	G-001-016	LATROBE	6.79
242	G-001-018	OLD READING	3.77
243	G-001-021	PABST	3.00
244	G-001-022	PIEL	4.00
245	G-001-023	QUANDT	7.73
246	G-001-024	SCHAEFER	5.77
247	G-001-025	TRU-BLU	4.00
248	G-001-037	METZ	15.00
249	G-001-040	ROBIN HOOD	21.77
250	G-002-003	HAMPDEN	6.50
251	G-002-004	HAMPDEN	2.00
252	G-005-999	FARRELL OPENERS	6.00
253	G-008-013	GLUEK	5.00
254	G-013-007	OLD TAVERN	15.50
255	G-015-001	COORS	15.00
256	G-018-001	COORS	15.10

257	G-021-004	NORTHAMPTON	15.50
258	G-024-UL	COORS LIGHT	15.00
259	G-029-001	COORS	5.00
260	G-036-001	MICHELOB	8.50
261	H-002-030	PABST (Tie Bid)	6.00
262	H-005-011	FLOCK	8.50
263	H-007-002	BLATZ	8.50
264	H-008-005	ESSLINGER	39.52
265	H-008-016	NARRAGANSETT	31.52
266	I-007-002	ACME	8.50
267	I-007-005	ATLAS	11.56
268	I-007-007	BALLANTINE	5.55
269	I-007-009	BROWN DERBY	12.55
270	I-007-010	COORS	9.86
271	I-007-012	DREWRY'S	8.55
272	I-007-013	ESSLINGER	11.35
273	I-007-017	GENESEE	6.57
274	I-007-021	HAND	11.35
275	I-007-025	LIEBMANN	5.50
276	I-007-025	LIEBMANN	7.50
277	I-007-032	PABST	9.86
278	I-007-036	RUPPERT	4.09
279	I-007-038	SCHMIDT	16.57
280	I-007-043	ACME	12.57
281	I-007-048	BUDWEISER	9.86
282	I-007-052	HAMM	9.86
283	I-007-059	SCHAEFER	3.77
284	I-007-065	HARVARD	6.03
285	I-007-077	ACME	9.86
286	I-011-292	BUDWEISER (RO-LOC)	8.00
287	I-017-060	HAMMS	3.03
288	I-017-196	VALLEY BREW	3.50
289	I-025-001	NORTHAMPTON (MIN \$50)	81.00
290	L-002-001	ANHEUSER BUSCH	31.00
291	M-003-002	BISMARCK	12.50
292	M-038-006	SCHLITZ	2.00
293	M-055-001	INTERNATIONAL	30.11
294	N-009-015	BLATZ	8.00
295	N-012-001	BECK	33.50
296	N-018-002	BUDWEISER	12.50
297	N-024-999	HUTCHINSON CROWNS	10.01
298	N-028-002	HAMMS	35.50
299	N-043-999	PASTIME WHITEFISH MONT	15.01
300	O-002-012	HIGHLANDER	32.50
301	O-002-999	ORANGE SMILE MAN	27.00
302	O-004-001	COORS	15.00
303	O-004-003	GIBBONS	15.53
304	O-005-015	STEGMAIER	22.00
305	O-005-999	TRU-ADE	26.52
306	O-005-999	TOME BACARDI	26.52
307	O-016-002	STEGMAIER	40.50
308	P-022-010	MOERLEIN (Tie Bid)	17.00
309	P-023-004	WAVERLY (MIN \$50)	70.50

Thanks To 48 Bidders
High Lot #28 \$133.00

July 1998 JFO Auction-Closing August 19, 1998- Name & Mem #:
--

Send Bids To: John Stanley, PO Box 64, Chapel Hill, NC 27514

Auction Rules (Note: No Phone Bidding)

- 1) Only 1 Bid Per Item and Only 1 Bid Sheet Allowed for the Auction
- 2) Openers Sold to Highest Bidder
- 3) Identical Bids, Earliest Postmarked Bid Wins
- 4) 7 Days to Return Openers If Not Satisfied
- 5) Openers Shipped Upon Payment (Please Pay within 7 days of Receiving Invoice)
- 6) Results Shown Next JFO Issue (Winning Bidders Receive Copy with Invoice)
- 7) Shipping and Handling Extra

Conditions (CS): PO (Poor), G (Good), VG (Very Good), EX (Excellent), M (Mint)

(UL-Unlisted in 98 Handbook, 999-Non-USA-Beer)

JFO # & Description from 1998 Handbook Of United States Beer Advertising Openers and Corkscrews

#	JFO #	Description	ST	CS	BID
001	A-001-002	THAT GOOD AURORA BEER	IN	G	
002	A-001-008	GLOBE BREWING CO. SAN FRANCISCO PHONE SU-0120	CA	G	
003	A-001-016	MONTANA BREWING CO. "MY FAVORITE"	MT	EX	
004	A-001-023	GRAFS DRINK "THE BEST WHAT GIVES"	WI	G	
005	A-001-066	THE STONE MALT COMPANY COLUMBUS, OHIO	OH	VG	
006	A-001-088	(BREW) 102	CA	G	
007	A-001-094	SPOKANE BOTTLE SUPPLY 408 SPRAGUE PHONE MAIN 3580	WA	PO	
008	A-001-999	COMPLIMENTS ROXBORO BOTTLING CO ROXBOROUGH PHILA.	PA	VG	
009	A-003-012	THE STONE MALT COMPANY	OH	VG	
010	A-003-999	RIDGLEY SUPPLY R&M SUPPLY CO. GREENBAY RHINELANDER	WI	VG	
011	A-005-015	IDEAL FOOD PRODUCTS CO. CEDAR RAPIDS, IOWA. IDEAL MALT SYRUP (IYS IN CIRCLE)	IA	G	
012	A-006-001	COMPT'S WEST END BRG. CO. / UTICA-CLUB IT'S IN THE TASTE PILSENER WUERZBURGER-GINGER ALE	NY	VG	
013	A-008-001	IN YOUR HOME USE JACOB RUPPERT KNICKERBOCKER	NY	VG	
014	A-012-001	BURGERMEISTER A TRULY FINE PALE BEER / SHRINE VICTORY CONVENTION JULY 1946 SAN FRANCISCO	CA	EX	
015	A-012-999	LONDON DRY GINGER ALE		VG	
016	A-016-005	GOLD TOP "THAT'S THE BEER" / SAME	OH	G	
017	A-017-005	THE KAMM & SCHELLINGER BRG. CO. MISHAWAKA, IND. / OUR BRANDS - PRIVATE STOCK EXPORT K & S STANDARD	IN	VG	
018	A-017-014	CAPITAL CITY BREWING CO. HELENA, MONT.	MT	G	
019	A-021-028	OLD DUTCH BREWERS BEST BEERS P.O.C. A & B DIST. CO.		VG	
020	A-021-999	FORESTERS CLUB COURT ROYAL NO. 19 W. 39 PACIFIC AVE. SPOKANE, WN.	WA	EX	
021	A-021-999	YOU LOSE IF YOU DO NOT USE OUR MIXERS LYONS BOTTLING CO. PHONE 105		G	
022	A-029-002	DRINK EBERLE'S DELICIOUS BEVERAGES JACKSON, MICH.	MI	G	
023	A-029-003	K-B K B BEER	IL	VG	
024	A-029-005	PABST BLUE RIBBON BREW / THE BREW THAT BRINGS BACK MEMORIES (REVERSE HAS STRAIGHT LETTERS)	WI	EX	
025	A-029-005	PABST BLUE RIBBON BREW / THE BREW THAT BRINGS BACK MEMORIES (REVERSE HAS STRAIGHT LETTERS)	WI	G	
026	A-029-007	RAINIER OLD GERMAN LAGER / RAINIER LIME RICKEY	CA	VG	
027	A-029-009	SCHLITZ (REST IN HANDBOOK)	WI	G	
028	A-029-018	PABST BLUE RIBBON BREW / THE BREW THAT BRINGS BACK-MEMORIES (REVERSE HAS SLANTED LETTERS)	WI	VG	

July 1998 JFO Auction-Closing August 19, 1998- Name & Mem #:					
---	--	--	--	--	--

029	A-029-018	PABST BLUE RIBBON BREW / THE BREW THAT BRINGS BACK-MEMORIES (REVERSE HAS SLANTED LETTERS)	WI	VG	
030	A-029-023	POTOSI BREWING CO. POTOSI, WIS. / "WISCONSIN LAGER" "THE DRINK FOR YOU"	WI	EX	
031	A-029-999	DRINK LITHIA HIGH GRADE SODA WATERS, PUEBLO, COLO.	CO	G	
032	A-029-999	OLD TOWER ALE & PORTER (CANADIAN)		VG	
033	A-029-999	PELLISSIER'S ALE-BEER-STOUT PHONES 42-304-41-WINNIPEG / GOLDEN-GLOW-ALE (CANADIAN)		VG	
034	A-029-999	POLAR PALE DRY GINGER ALE / SAME		VG	
035	A-029-UL	ROOSEVELT MALT PRODUCTS CO. 6806 ROOSEVELT AVE. TEL. NEWTOWN 9423 ORDERS DELIVERED		VG	
036	A-030-999	ALBERTA'S PRIDE (CANADIAN)		G	
037	A-030-999	DRINK "CASCADE GINGER ALE		G	
038	A-031-999	GET THE NATIONAL HABIT CASH IN ON NATIONAL OIL SEALS		M	
039	A-035-005	BUFFALO BREWING CO. SACRAMENTO, CAL. (VAR (B) LARGE LETTERS)	CA	G	
040	B-001-004	GUND'S PEERLESS BEER GOOD SINCE 1854 (GUND LACROSSE G (IN LOGO)) (NO PAINT)	WI	G	
041	B-006-999	CHANCELLOR CIGAR OLDEST AND BEST / LITTLE CHANCELLOR CIGAR 5C SIZE		G	
042	B-013-008	G. HEILEMAN BREWING CO. LACROSSE, WIS. / OLD STYLE LAGER	WI	EX	
043	B-013-045	BLUE RIBBON PRODUCTS CO. READING-POTTSVILLE- LANCASTER-YORK / TIP-TOP MALT SYRUP HOME BEVERAGE SUPPLIES	PA	VG	
044	B-013-070	IDALLO BEER	ID	VG	
045	B-013-999	BEVERAGE SUPPLY HOUSE PHONE 249 ROSEBURG, OREGON	OR	EX	
046	B-013-999	GOLDEN STATE BEVERAGE CO. / NEW CROW		EX	
047	B-013-999	HAWAIIAN DRY "MADE WHERE THE GINGER GROWS"		G	
048	B-013-999	KLEER DRUG CO. STORES THROUGHOUT BAY AREA	CA	G	
049	B-013-999	OLD ENGLISH GINGER ALE		G	
050	B-013-999	TOM MOORE GINGER ALE		VG	
051	B-014-005	BLATZ HEIDELBERG BEER / EAT COR-BETTA ICE CREAM DENVER, COLO.	CO	VG	
052	B-014-019	M.K. GOETZ BREWING CO. ST. JOSEPH, MO. / GOETZ COUNTRY CLUB	MO	G	
053	B-014-025	GRAND PRIZE BEER / TOP OF THE BREW	TX	G	
054	B-014-033	MANITOWOC PRODUCTS CO. KINGSBURY PALE / THE ARISTOCRAT OF THEM ALL MANITOWOC, WIS.	WI	G	
055	B-014-041	JACOB SCHMIDT BREWING CO. ST. PAUL, MINN. / SCHMIDT'S CITY CLUB	MN	VG	
056	B-014-051	JOHN GRAF CO. / JAMAICA PALE-DRY GINGER ALE	WI	EX	
057	B-014-053	HAMM'S MASTER BREW ST. PAUL, MINN. / OXFORD CLUB PALE DRY GINGER ALE	MN	EX	
058	B-014-060	SEITZ BREWERY EASTON, PA. / DRINK SEITZ BEER	PA	EX	
059	B-014-085	GLUEK GLUEK'S / GLUEK PILSENER PALE	MN	VG	
060	B-014-085	GLUEK GLUEK'S / GLUEK PILSENER PALE	MN	G	
061	B-014-090	M.K. GOETZ BREW. CO. ST. JOSEPH KANSAS CITY MO. GOETZ COUNTRY CLUB PILSENER BEER	MO	EX	
062	B-014-095	HOSTERS DRINK GOLD TOP "THAT'S THE BEER"	OH	G	
063	B-014-100	MANITOWOC PRODUCTS CO. MANITOWOC, WISCONSIN / KINGSBURY PALE	WI	G	
064	B-014-106	CERVA MADE IN ST. LOUIS (LEMP BREWING) / CERVA A SOFT DRINK	MO	G	
065	B-014-110	M.K. GOETZ BREW. CO. ST. JOSEPH KANSAS CITY MO. FLAVOR-BLENDED COUNTRY CLUB BEER	MO	EX	
066	B-014-113	YOU'LL LIKE HENSLEER BEER	NJ	EX	
067	B-014-135	A-1 BEER AND OLD KING COLE	AZ	EX	

July 1998 JFO Auction-Closing August 19, 1998- Name & Mem #:

068	B-014-999	CALGARY BREWING&MALTING CO LIMITED CALGARY (CANADIAN)		VG	
069	B-014-999	IMPROVED CROWN & SEAL CO. MADE IN CHICAGO	IL	G	
070	B-014-999	SAN JOSE NEXT!	CA	G	
071	B-014-999	SILVER SPRING BEER VICTORIA B.C. (CANADIAN)		EX	
072	B-014-999	VANCOUVER BREWERIES, LTD. / DRINK CASCADE (CANADIAN)		VG	
073	B-014-999	WEAVER TRACTOR CO. SACRAMENTO- -WOODLAND	CA	VG	
074	B-015-012	ALWAYS DEMAND SCHREIERS BY NAME / DUBLIN DRY GINGER ALE	WI	VG	
075	B-018-011	CALIFORNIA BOTTLING ASSN. DRINK OLD BOHEMIAN BREW	CA	G	
076	B-018-055	RETURN THESE KEYS TO OLYMPIA BREWING CO. OLYMPIA, WASHINGTON AND RECEIVE REWARD / (NUMBERED 1580)	WA	G	
077	B-018-112	MONTANA BREWING CO. ASK FOR "MY FAVORITE"	MT	EX	
078	B-018-115	SCHLITZ IN BROWN BOTTLES / SCHLITZ PALE DRY GINGER ALE	WI	VG	
079	B-018-116	RAINIER BREWING CO. SAN FRANCISCO, U.S.A. / DRINK RAINIER BREW	CA	VG	
080	B-018-235	WIELAND'S BEER / BREWERY'S OWN BOTTLING	CA	G	
081	B-018-999	BUFFALO ROCK GINGER ALE		VG	
082	B-018-999	DRINK EAGLE BRAND GINGER ALE / EAGLE BOTTLING WORKS DAVENPORT, IOWA	IA	G	
083	B-018-999	FERNIE-FORT STEELE BREWING CO. LTD. FERNIE, B.C. (CANADIAN)		VG	
084	B-018-999	ROCK SPRING WATER GINGER ALE		VG	
085	B-018-UL	COMPLIMENTS OF CLAUSSEN BREWING ASSN SEATTLE WA / JUD'S PLACE DOCK ST (FRONT VERY WORN)	WA	PO	
086	B-019-138	COMPLIMENTS OF SEATTLE BREWING AND MALTING CO. / KEY TO RAINIER BEER	WA	EX	
087	B-019-999	DRINK FAMOUS ARROWHEAD BRANDS		G	
088	B-019-999	DRINK MALTOSEA BREWED BY HEISZ & TIEDE FORMOSA ONT. (CANADIAN)		G	
089	B-019-999	INGERSOLL & ESLER SAN BERNARDINO, CAL.	CA	G	
090	B-021-019	CALL FOR FREDERICKSBURG BEER	CA	G	
091	B-021-029	HOPSBURGER BEER		VG	
092	B-021-033	DRINK HUMBOLDT BEER GOOD? YES	CA	G	
093	B-021-059	NATIONAL BEER / BEST IN THE WEST	CA	G	
094	B-021-065	PFIAFF'S BEER	MA	VG	
095	B-021-241	DRINK EAST SIDE THE GOLD MEDAL BEER	CA	EX	
096	B-021-366	DRINK CLAUSS' BIRCH BEER		G	
097	B-021-476	ABERDEEN BREWING CO. GOLDEN AGE	WA	VG	
098	B-021-520	INDEPENDENT BREWING CO. SEATTLE CALL FOR "OLD GERMAN LAGER" (REALLY B-63)	WA	G	
099	B-021-999	RED GOOSE ROOT BEER		G	
100	B-022-004	FALSTAFF BOTTLED BEER / SAME	MO	VG	
101	B-022-014	MINNEAPOLIS BREWING CO. GOLDEN GRAIN BELT BEERS	MN	VG	
102	B-022-019	SCHLITZ IN BROWN BOTTLES / THE BEER THAT MADE MILWAUKEE FAMOUS	WI	G	
103	B-022-029	DRINK HUEBNER TOLEDO BEER	OH	G	
104	B-022-106	FAMOUS BOTTLED BEER		G	
105	B-022-117	BUNKER HILL BREWERIES P.B. THAT GOOD ALE BOSTON, MASS.	MA	VG	
106	B-023-004	BURGERMEISTER BEER / SAME	CA	VG	
107	B-023-005	CENTLIVRE BEER FT. WAYNE, IND. YOU PAY (SPINNER)	IN	EX	

July 1998 JFO Auction-Closing August 19, 1998- Name & Mem #:					
---	--	--	--	--	--

108	B-023-008	TRY EHRET'S EXTRA / (TRADEMARK)	NY	EX	
109	B-023-010	GOLDEN GLOW BEER / GOLDEN GLOW YOU PAY (SPINNER)	CA	EX	
110	B-023-010	GOLDEN GLOW BEER / GOLDEN GLOW YOU PAY (SPINNER)	CA	G	
111	B-023-018	MILLER HIGH LIFE BEER	WI	G	
112	B-023-020	MILLER HIGH LIFE BEVERAGES	WI	VG	
113	B-023-022	DRINK OLD STYLE LAGER	WI	VG	
114	B-023-042	MINNEHAHA PALE-ROOT BEER MINNEAPOLIS U.S.A. (MINNEAPOLIS BREW)	MN	G	
115	B-023-086	EDELWEISS PRODUCTS / GREEN RIVER	IL	EX	
116	B-023-100	SALEM BEER "IT'S THE BEER"	OR	G	
117	B-023-111	LANG'S HUAN DRY GINGER ALE	NY	VG	
118	B-023-159	ATLAS BREWING CO. CHICAGO TEN PHONES CANAL 6200 / ATLAS FOR EVERYBODY	IL	G	
119	B-023-999	SERPA FINANCE CO. SAN BERNARDINO	CA	VG	
120	B-023-999	THE C.Z. SEELIG CO. BEVERAGES & CIGARS		EX	
121	B-024-004	BUFFALO BREWING CO. SACRAMENTO, CALIF.	CA	VG	
122	B-024-005	BURGERMEISTER BEER / SAME	CA	VG	
123	B-024-006	BURKHARDT'S BEER / MUG ALE	MA	G	
124	B-024-013	GB LAGER	CA	VG	
125	B-024-015	GLUEK'S	MN	VG	
126	B-024-016	GOLDEN GLOW BEER	CA	VG	
127	B-024-017	GRIESEDIECK BROS. ST. LOUIS	MO	G	
128	B-024-020	DRINK IRON CITY BEER "THE TALK OF THE TOWN" / SAME	PA	G	
129	B-024-021	KINGSBURY BREWERIES CO. KINGSBURY PALE BEER	WI	VG	
130	B-024-022	ENJOY LUCKY LAGER BEER	CA	VG	
131	B-024-030	RAINIER ALE / RAINIER BEER	CA	VG	
132	B-024-032	JACOB SCHMIDT BREWING CO. ST. PAUL, MINN. / CITY CLUB	MN	VG	
133	B-024-033	K.G. SCHMIDT'S BEER LOGANSPOET, INDIANA (VAR (A) SMALL LETTERS)	IN	G	
134	B-024-047	POINTER BREWING CO. CLINTON, IOWA POINTER BEER	IA	G	
135	B-024-052	MATHIE-RUDER BREW. CO. WAUSAU, WISCONSIN ENJOY RED RIBBON & NORTH STAR BEER	WI	VG	
136	B-024-055	POINTER BREWING CO. CLINTON, IOWA	IA	G	
137	B-024-056	SALEM BEER "IT'S THE BEER"	OR	EX	
138	B-024-060	BURGERMEISTER BEER	CA	G	
139	B-024-063	DICK'S BEER GENUINE (CHARACTER) PILSENER	IL	G	
140	B-024-999	AL'S BAR POLSON, MONTANA	MT	EX	
141	B-024-999	BERKLEY CLUB GINGER ALE AMERICA'S BEST		G	
142	B-024-999	DRINK MUNDORFF'S BEVERAGES		G	
143	B-025-008	ATLAS BREWING CO. CHICAGO / MAGNET BEER THAT'S THE BEER	IL	VG	
144	B-033-002	DRINK HEILEMAN'S OLD STYLE LAGER LACROSSE, WIS. (VAR (B) STEEL) (NO PAINT)	WI	G	
145	B-035-004	STORZ BEER / SAME	NE	EX	
146	B-035-004	STORZ BEER / SAME	NE	VG	
147	B-042-003	STORZ BREWING CO. OMAHA (REST IN HANDBOOK)	NE	VG	
148	B-042-999	COMPLIMENTS OF KEY-STONE SPRING EAST POLAND, ME. E.M. PRATT, PROP.	ME	M	

July 1998 JFO Auction-Closing August 19, 1998- Name & Mem #:

149	B-042-999	DRINK CHERO-COLA 5C THERE IS NONE SO GOOD / IF LOST-FINDER PLEASE RETURN TO CHERO-COLA BOT. CO.		VG	
150	B-045-999	STUDEBAKER BROS. COMPANY / SALT LAKE CITY	UT	G	
151	C-004-001	PABST BLUE RIBBON / THE BEER OF QUALITY	WI	PO	
152	C-005-001	PABLO MADE BY PABST MILWAUKEE / PABLO THE HAPPY HOPPY DRINK	WI	G	
153	C-005-002	PABST BLUE RIBBON / THE BEER OF QUALITY	WI	VG	
154	C-006-002	FALLS CITY LAGER BEER	KY	G	
155	C-006-003	IROQUOIS ALE-BEER-PORTER BUFFALO, N.Y.	NY	VG	
156	C-006-004	PABST BLUE RIBBON THE BEER OF QUALITY (RIBBON)	WI	VG	
157	C-006-005	"LONDON BOBBY" ALE	OH	VG	
158	C-007-001	UTICA-CLUB PILSENER-WUERZBURGER IT'S IN THE TASTE-PALE DRY GINGER ALE / SAME	NY	G	
159	C-009-001	ACME BEER	CA	VG	
160	C-009-003	BLATZ MILWAUKEE (VB IN STAR)	WI	EX	
161	C-009-007	STORZ BEER OMAHA	NE	VG	
162	C-009-014	EDELWEISS / GREEN RIVER	IL	VG	
163	C-009-025	OLD BOHEMIAN BREW	CA	VG	
164	C-009-025	OLD BOHEMIAN BREW	CA	VG	
165	C-010-002	AMERICAN BREWING CO. ROCHESTER, N.Y. / TAM O'SHANTER ALE APOLLO BEER	NY	EX	
166	C-010-010	IRON CITY BEER	PA	VG	
167	C-010-027	DRINK GRAF'S BEVERAGES PHONE MITCHELL 3500 / CARBONATED BEVERAGES "THE BEST SINCE 1873"	WI	EX	
168	C-011-017	GENERAL BREWING CORPORATION LUCKY LAGER LUCKY LAGER BONDED BEER / SAME	CA	EX	
169	C-011-018	GENERAL BREWING CORPORATION LUCKY LAGER BONDED BEER / SAME	CA	VG	
170	C-012-008	FORT PITT SPECIAL BEER	PA	VG	
171	C-012-063	SIMON PURE ALE AND BEER	NY	VG	
172	C-012-096	RAINIER BREWING COMPANY, INC. SAN FRANCISCO, CAL. / 5 1/2% RAINIER BEER OLD ORIGINAL (BOTTLE)	CA	VG	
173	C-012-114	X WASHINGTON DUB-L-EX PILSENER STYLE X	OH	PO	
174	C-012-128	RAINIER BREWING COMPANY, INC. SAN FRANCISCO, CAL. / RAINIER BEER OLD ORIGINAL (BOTTLE)	CA	G	
175	C-012-159	SCHAEFER BEER AT ITS BEST MADE IN U.S.A. / SCHAEFER BEER AT ITS BEST	NY	G	
176	C-013-015	COLUMBUS BREWING CO. ALL-AMERICAN	NE	G	
177	C-013-019	DETROIT BREW. CO. OLD BRU BEER (BOTTLE)	MI	G	
178	C-013-021	DOBLER P.O.N.	NY	VG	
179	C-013-025	DUQUESNE BREWING CO. PITTSBURG (REST IN HANDBOOK)	PA	G	
180	C-013-030	F & S BEER ALE	PA	G	
181	C-013-033	FALLS CITY BREWING CO. LOUISVILLE, KY. FALLS CITY BEER (BOTTLE)	KY	VG	
182	C-013-036	FEIGENSPAN P.O.N.	NJ	G	
183	C-013-037	FITZGERALD BROS. BREWING CO. TROY, N.Y. BURGOMASTER BEER (BOTTLE)	NY	VG	
184	C-013-041	FORT PITT DOUBLE LAGERED BEER	PA	EX	
185	C-013-042	FORT PITT SPECIAL PREMIUM BEER	PA	EX	
186	C-013-045	THE FRANKLIN BREWING CO. BEN BREW 100% GRAIN	OH	PO	
187	C-013-048	MADE ONLY BY THE GERMAN BREWING CO. CUMBERLAND, MD. / THE ORIGINAL OLD GERMAN BEER	MD	VG	
188	C-013-056	HAMM'S SMOOTH MELLOW BEER	MN	EX	

July 1998 JFO Auction-Closing August 19, 1998- Name & Mem #:					
--	--	--	--	--	--

189	C-013-057	HANLEY'S FOR ALE	RI	G	
190	C-013-062	ASK FOR K-B BEER	IL	VG	
191	C-013-071	MILLER HIGH LIFE BEER HIGH LIFE (BOTTLE)	WI	VG	
192	C-013-074	NATIONAL PREMIUM BEER	MD	VG	
193	C-013-080	PABST BLUE RIBBON BEER (BOTTLE) (1001)	WI	EX	
194	C-013-080	PABST BLUE RIBBON BEER (BOTTLE) (517)	WI	EX	
195	C-013-081	PABST BLUE RIBBON BREW (BOTTLE) / THE BREW THAT BRINGS BACK MEMORIES (BOTTLE)	WI	PO	
196	C-013-082	PEERLESS BEER LACROSSE, WISCONSIN (NO SPINNER)	WI	VG	
197	C-013-091	RUPPERT BEER ALE	NY	M	
198	C-013-096	SCHLITZ (BOTTLE) / SCHLITZ THE BEER THAT MADE MILWAUKEE FAMOUS	WI	VG	
199	C-013-097	JACOB SCHMIDT BREWING CO. / CITY CLUB BEER	MN	G	
200	C-013-112	TERRE HAUTE BREWING CO. INC. CHAMPAGNE VELVET BEER / CHAMPAGNE VELVET BEER (BOTTLE)	IN	VG	
201	C-013-128	DREWRY'S	IN	G	
202	C-013-134	FROM THE CYPRESS CASKS OF GOEBEL (CREST)		G	
203	C-013-137	G. HEILEMAN BREWING CO. LACROSSE, WIS. OLD STYLE LAGER	WI	G	
204	C-013-140	IRON CITY BEER	PA	G	
205	C-013-141	KESSLER BEER (BOTTLE)	MT	VG	
206	C-013-207	COORS	CO	EX	
207	C-013-999	ORANGE CRUSH PURE ORANGE JUICE		EX	
208	C-014-011	RHEINGOLD (VAR (A) SMOOTH SURFACE)	NY	VG	
209	C-014-012	RHEINGOLD EXTRA DRY	NY	G	
210	C-014-016	RUPPERT BEER OLD KNICKERBOCKER BEER	NY	G	
211	C-014-019	STORZ GOLD CREST BEER (CREST)	NE	G	
212	C-015-004	BE HAPPY WITH HARVARD ALE OR EXPORT	MA	G	
213	C-015-005	POUR ON THE IRON RALLY ROUND RETURNABLES / RALLY ROUND THE PIRATES	PA	M	
214	C-015-006	IROQUOIS BEVERAGE CORP., BUFFALO, N.Y. IROQUOIS ALE BEER (INDIAN)	NY	EX	
215	C-017-011	IROQUOIS INDIAN HEAD BEER	NY	G	
216	C-017-020	PABST BLUE RIBBON BEER (SHORT BOTTLE)	WI	VG	
217	C-017-021	PABST BLUE RIBBON BEER (TALL BOTTLE)	WI	VG	
218	C-017-030	VALLEY FORGE BEER	PA	EX	
219	C-017-065	THE VICTOR BREWING CO. JEANNETTE, PA. DRINK OLD SHAY ALE / NOW! TASTE STEINHAUS THE BEST BEER YET!	PA	VG	
220	C-017-066	ATLAS PRAGER BEER GOT IT?? GET IT!!	IL	VG	
221	C-017-999	GEORGE KILLIANS		EX	
222	C-018-009	ROLLING ROCK PREMIUM BEER	PA	VG	
223	C-019-002	FORT PITT SPECIAL BEER-SOMETHING SPECIAL / OLD SHAY DELUXE BEER-FOR PARTICULAR PEOPLE (NO COLORS)	PA	G	
224	C-019-003	GRETZ BEER (MAN ON HIGH WHEELER)	PA	VG	
225	C-019-006	INDEPENDENT MILWAUKEE BREWERY BRAUMEISTER SPECIAL PILSENER BEER	WI	VG	
226	C-020-004	KAIER'S SPECIAL BEER UNION MADE / KAIER'S OLD DIAMOND ALE & PORTER UNION MADE	PA	G	
227	C-020-005	LEBANON VALLEY EXPORT BEER-ALE-PORTER (LV LOGO) / SAME	PA	EX	
228	C-021-004	THE WM. PETER BREWING CORP.	NJ	VG	
229	C-031-001	ALWAYS DRINK GOLD BOND / SAME	OH	G	

July 1998 JFO Auction-Closing August 19, 1998- Name & Mem #:

230	C-033-001	LEISY'S / SAME	OH	VG	
231	C-042-002	BUSCH	MO	M	
232	C-999-999	C-12 & C-41 (BOTH) CANADA DRY / SAME		EX	
233	CBO-NL-3	HERNSHEIM CO. LTD. NEW ORLEANS / HERNSHEIM STRAIGHT LINE CIGARS.	LA	G	
234	D-002-006	SCHLITZ / SAME	WI	G	
235	D-003-999	CLUB ORANGE / SAME (BRITISH PATENT NUMBER)		VG	
236	D-003-999	TABLE WATERS / DTHWAITES & CO LTD		G	
237	D-005-002	BLATZ	WI	VG	
238	D-006-003	FEHR'S / LOUISVILLE (ONE L)	KY	G	
239	E-001-011	MOUNT CARBON ALE-PORTER / MOUNT CARBON LAGER BEER	PA	VG	
240	E-001-012	STEGMAIER BREWING CO. WILKES-BARRE, PA. / WILKES-BARRE TEL. 2-8171 SCRANTON TEL. 4-1167	PA	G	
241	E-001-024	KOEHLER'S BEER OLD DOBBIN ALE	PA	G	
242	E-002-017	DRINK PROGRESS BEER / SAME	OK	VG	
243	E-002-018	ADAM SCHEIDT BREWING CO. / VALLEY FORGE SPECIAL	PA	VG	
244	E-003-005	FISHER BEER SINCE 1884 / SAME	UT	VG	
245	E-003-005	FISHER BEER SINCE 1884 / SAME	UT	VG	
246	E-003-007	FOX HEAD BEERS AND ALE / SAME	WI	VG	
247	E-003-008	GRIESEDECK BROS. ST. LOUIS LIGHT LAGER / SAME	MO	EX	
248	E-003-011	DRINK GOOD OLD HOOSIER BEER / SAME	IN	VG	
249	E-003-013	DRINK KAMM'S QUALITY BEER / SAME		G	
250	E-003-016	C. SCHMIDT & SONS, INC., PHILADELPHIA, PA. / BEER-ALE BREWERS SINCE 1860	PA	EX	
251	E-003-017	SIOUX CITY BREWING CO. HEIDEL-BRAU / WESTERN BREW BEST IN THE WEST	IA	VG	
252	E-003-020	STANDARD BREWING CO. INC. ROCHESTER, N.Y. / STANDARD ALE PORTER-HALF & HALF	NY	VG	
253	E-003-021	STANDARD BREWING CO. INC. ROCHESTER, N.Y. TEL. GLEN.0373 / STANDARD DRY ALE OLD OX CART BEER	NY	VG	
254	E-003-027	CENTRAL BREWERY ROYAL SIX / THE LIFE OF ANY PARTY	MO	EX	
255	E-004-007	ATLAS BR'G. CO. CHICAGO CANAL 6200 / ATLAS PRAGER BEER	IL	EX	
256	E-004-014	BLATZ MILWAUKEE / DRINK OLD HEIDELBERG BREW	WI	VG	
257	E-004-021	CENTLIVRE BRG. CORP. FORT WAYNE / NICKEL PLATE BEER	IN	VG	
258	E-004-035	FALSTAFF / THE CHOICEST PRODUCT OF THE BREWER'S ART (VAR (A) BREWER'S)	MO	PO	
259	E-004-047	HUDEPOHL BREWING CO. / CINCINNATI OHIO (SCREWDRIVER TIP)	OH	VG	
260	E-004-049	INDEPENDENT MILWAUKEE BREWERY / BRAUMEISTER BEER	WI	EX	
261	E-004-050	MANITOWOC PRODUCTS CO. MANITOWOC, WIS. / KINGSBURY PALE	WI	PO	
262	E-004-053	LANG'S EXTRA FINE ALE / LANG'S EXTRA FINE BEER	NY	VG	
263	E-004-055	LION BREWERY OF N.Y.C. / SAME	NY	G	
264	E-004-057	MANHATTAN BRG. CO. CHICAGO, ILL. / OLD MANHATTAN LAGER BEER	IL	EX	
265	E-004-062	MILLER HIGH LIFE BEER / UNIVERSITY CLUB (VAR (B) SQUARE HEAD)	WI	VG	
266	E-004-067	POTOSI / POTOSI BEER ALWAYS GOOD	WI	EX	
267	E-004-071	RAINIER BREWING CO., INC. SAN FRANCISCO, CAL. / DRINK RAINIER BEER	CA	EX	
268	E-004-072	REGAL AMBER BREWING CO. / REGAL AMBER-LAGER BEER (VAR (A) HYPHEN)	CA	VG	
269	E-004-073	REGAL INDIA ALE / REGAL PALE BEER	CA	G	

July 1998 JFO Auction-Closing August 19, 1998- Name & Mem #:					
---	--	--	--	--	--

270	E-004-075	ROCHESTER BREWING CO. / OLD TOPPER ALE	NY	G	
271	E-004-102	ATLAS B'R'G. CO. CHICAGO CANAL 6200 / DRINK ATLAS BEER	IL	G	
272	E-004-117	M.K. GOETZ BREWING CO. / COUNTRY CLUB SPECIAL	MO	VG	
273	E-004-132	PRIMA COMPANY BEVERAGES / CHICAGO, PHONE LINCOLN 4302	IL	VG	
274	E-004-144	SCHORR-KOLKSCHNEIDER BRWG. CO. ST. LOUIS, MO. / S-K LAGER BEER	MO	VG	
275	E-004-159	BESSER BEER-MOHAWK 2300 / THREE STAR-MOHAWK 2300	IL	VG	
276	E-004-164	DICK & BROS. QUINCY BREWERY CO. / DICK'S QUINCY BEER	IL	VG	
277	E-004-167	FISHER BEER SINCE 1884 / SAME	UT	VG	
278	E-004-192	ROBIN-HOOD BEER / SAME	NE	G	
279	E-004-199	TROMMER'S MALT BEERS / SAME	NY	VG	
280	E-004-213	BLATZ MILWAUKEE / DRINK OLD HEIDELBERG BEER	WI	VG	
281	E-004-246	TWO RIVERS BEVERAGE CO. TWO RIVERS, WIS. / GOLDEN DROPS	WI	VG	
282	E-004-252	FLANAGAN-NAY NEW YORK CITY / "IT'S A MAN'S BEER"	NY	VG	
283	E-004-296	DRINK WIELAND'S EXTRA PALE / FREDERICKSBURG EXPORT LAGER	CA	VG	
284	E-004-337	"DON'T SAY BEER SAY SCHLITZ" / "THE BREW THAT MADE MILWAUKEE FAMOUS" (VAR (B) NO QUOTES BACKSIDE (BREW))	WI	VG	
285	E-005-031	STORZ BEER LIGHT-DRY-SMOOTH	NE	VG	
286	E-005-034	COLORADO BREWING CORP. TRINIDAD, COLO. COLORADO THREE *** STAR BEER	CO	VG	
287	E-005-999	(1) POP SHOPPE (2) HIGH HAT BEVERAGES SIOUX FALLS SD (3) COEUR D'ARLENE IDAHO ROUND TABLE		VG	
288	E-006-020	PUT EASTSIDE INSIDE / SAME	CA	VG	
289	E-006-032	"DRINK" HORTON'S BEER / SAME	NY	VG	
290	E-006-035	G. KRUEGER BRG. CO. NEWARK, N.J. / KRUEGER'S FINEST BEER LORD ESSEX STOUT OLD SURREY PORTER BOAR'S HEAD ALE-KENT ALE	NJ	VG	
291	E-006-079	MINNEAPOLIS BREWING CO. THE MINNEAPOLIS BEER / GOLDEN GRAIN BELT BEERS CANTERBURY ALE	MN	VG	
292	E-006-105	M.K. GOETZ BREWING CO. ST. JOSEPH, MO. / COUNTRY CLUB BEER GOETZ LAGER BEER	MO	G	
293	E-006-136	FRESNO BREWING CO. FRESNO BOHEMIAN EXPORT / FRESNO BREWING CO. FRESNO LAGER BEER	CA	G	
294	E-006-999	SILVER SPRINGS GINGER ALE / SAME		G	
295	E-007-007	M.K. GOETZ BREWING CO. ST. JOSEPH, MO. / DRINK COUNTRY CLUB COUNTRY CLUB SPECIAL	MO	G	
296	E-007-010	PRIMA COMPANY BEVERAGES / CHICAGO PHONE LINCOLN 4302	IL	G	
297	E-008-999	O'KEEFE'S DRY GINGER ALE / O'KEEFE'S SPECIAL SODA		G	
298	E-009-001	ANHEUSER-BUSCH ST. LOUIS MISSOURI. / SAME	MO	VG	
299	E-009-004	VAL. BLATZ BRG. CO. MILWAUKEE, WIS. / BLATZ PRIVATE STOCK LEADS THEM ALL	WI	VG	
300	E-009-043	RUHSTALLER'S GILT EDGE LAGER / SAME	CA	G	
301	E-009-057	HIGHLANDER BEER. / SAME	MT	G	
302	E-009-057	HIGHLANDER BEER. / SAME	MT	G	
303	E-009-068	BILLINGS BRG. CO. BILLINGS, MONT. / OLD FASHION BEER	MT	VG	
304	E-009-077	OLYMPIA BEER IT'S THE WATER / SAME	WA	VG	
305	E-009-089	DRINK COORS GOLDEN BEER / SAME	CO	VG	
306	E-009-115	SCHMIDT BREWING CO. DRINK CITY CLUB / SAME	MN	VG	
307	E-009-999	WESTMINSTER BREWERY LTD. / OLD MILWAUKEE (CANADIAN)		G	
308	E-011-001	ATLAS BREWING COMPANY CHICAGO, ILLINOIS / ATLAS PRAGER BEST BEER IN TOWN	IL	G	

July 1998 JFO Auction-Closing August 19, 1998- Name & Mem #:

309	E-011-004	BUDWEISER KING OF BEERS / SAME	MO	EX	
310	E-011-006	KAIER'S OUTSTANDING BEER / SAME	PA	EX	
311	E-011-013	STEGMAIER BREWING CO. WILKES-BARRE, PA. / BREWERS AND BOTTLEERS OF GOLD MEDAL BEER	PA	EX	
312	E-011-014	STRAUB BREWERY INC. ST. MARYS, PA. / BREWERS SINCE 1872	PA	EX	
313	E-013-999	(1) #9 HAMMS (2) #13 MINNEAPOLIS	MN	EX	
314	E-013-LOT	#8 HAMMS #9 HAMMS #13 MINNEAPOLIS #16 PABST		VG	
315	E-014-007	ALTES LAGER / THE ONLY EASTERN BEER MADE IN THE WEST	CA	EX	
316	E-014-018	BECKER'S BEER OGDEN, UTAH	UT	VG	
317	E-014-039	BUTTE BEER IS "BETTER" BEER / SAME	MT	VG	
318	E-014-047	F.W. COOK COMPANY, INC. EVANSVILLE, INDIANA / COOK'S BEER BOTTLES-CANS	IN	EX	
319	E-014-051	COORS FINE LIGHT BEER / SAME	CO	VG	
320	E-014-052	DRINK COORS GOLDEN BEER / SAME	CO	VG	
321	E-014-056	DALLAS-FORT WORTH BREWING CO. / ASK FIRST FOR BLUEBONNET BEER	TX	VG	
322	E-014-059	DICK BROS. BRG. CO. QUINCY, ILLINOIS / SAME	IL	VG	
323	E-014-069	PUT EASTSIDE INSIDE / SAME (COPPER)	CA	EX	
324	E-014-073	EL DORADO BREWING CO. / VALLEY BREW BEER STOCKTON, CALIF.	CA	VG	
325	E-014-080	F. & S. BEER SHAMOKIN, PA. / SAME	PA	VG	
326	E-014-088	FITGER'S BEER DULUTH, MINN. / NATURALLY BREWED NATURALLY BETTER	MN	EX	
327	E-014-101	GENESEE BEER 12 HORSE ALE / SAME	NY	VG	
328	E-014-105	IF IT'S...GIBBONS...IT'S GOOD / SAME	PA	EX	
329	E-014-107	GLUEK BRG. CO. MINNEAPOLIS, MINN. / THE BEER FOR THE MAN WHO KNOWS	MN	VG	
330	E-014-109	M.K. GOETZ BREWING CO. ST. JOSEPH, MO. / COUNTRY CLUB BEER GOETZ LAGER BEER	MO	VG	
331	E-014-111	M.K. GOETZ BREWING CO. ST. JOSEPH, MO. / DRINK COUNTRY CLUB COUNTRY CLUB SPECIAL	MO	G	
332	E-014-133	HAMM'S BEER IT'S THE REFRESHINGEST / FROM THE LAND OF SKY BLUE WATERS	MN	EX	
333	E-014-135	THEO. HAMM BRG. CO. ST. PAUL, MINN. / THE BEER REFRESHING	MN	EX	
334	E-014-141	HAUENSTEIN'S NEW ULM, MINN. / SAME	MN	EX	
335	E-014-143	HEILEMAN'S OLD STYLE LAGER / SAME	WI	VG	
336	E-014-147	HIGHLANDER PALE BEER / SAME	MT	VG	
337	E-014-157	HYDE PARK BOTTLE BEER / SELDOM EQUALED NEVER EXCELLED	MO	VG	
338	E-014-160	KAIER BREWING CO. / MAHANAY CITY PENNA.	PA	VG	
339	E-014-166	KINGSBURY PALE BEER MANITOWOC AND SHEBOYGAN, WISCONSIN	WI	G	
340	E-014-184	METZ BEER SINCE 1864 GOLDEN SPIKE BEER / METZ BEER SINCE 1864 METZ JUBILEE BEER	NE	VG	
341	E-014-187	MILLER BREWING COMPANY MILWAUKEE, WISCONSIN / MILLER HIGH LIFE BEER	WI	G	
342	E-014-188	MILLER HIGH LIFE BEER / SAME	WI	VG	
343	E-014-214	PEERLESS LACROSSE, WIS. / SAME	WI	G	
344	E-014-225	POTOSI BREWING CO. POTOSI, WIS. / GAINS BY COMPARISON	WI	EX	
345	E-014-232	RED TOP BREWING CO. CINCINNATI, OHIO / RED TOP BEER EXTRA DRY	OH	VG	
346	E-014-235	REGAL INDIA ALE / REGAL PALE BEER		VG	
347	E-014-241	RHINELANDER BEER RHINELANDER, WISCONSIN	WI	G	
348	E-014-253	ADAM SCHEIDT BREWING CO. / VALLEY FORGE BEER	PA	VG	

July 1998 JFO Auction-Closing August 19, 1998- Name & Mem #:					
---	--	--	--	--	--

349	E-014-259	SCHMIDT BEER OF ST. PAUL / ENJOY SCHMIDT BEER	MN	G	
350	E-014-260	SCHMIDT BREWING CO. ST. PAUL, MINN. / DRINK SCHMIDT'S CITY CLUB BEER	MN	EX	
351	E-014-270	SIOUX CITY BRG. CO. / HEIDEL-BRAU BEER	IA	EX	
352	E-014-302	WIELAND'S HAS THE FLAVOR / SAME	CA	VG	
353	E-014-307	D.G. YUENGLING & SON, INC. POTTSVILLE, PA. / DRINK YUENGLING'S BEER-ALE	PA	G	
354	E-014-317	BECKER'S BEER	UT	G	
355	E-014-318	BECKER BREWING & MALTING CO. / BECKER'S UINTA CLUB BEER	UT	G	
356	E-014-319	BECKER BREWING & MALTING CO.	UT	VG	
357	E-014-320	BEN BREW BEER KINGS HEAD ALE / SAME	OH	VG	
358	E-014-330	BREW "102" BREW "102" / SAME	CA	EX	
359	E-014-332	ANHEUSER-BUSCH BUDWEISER / SAME	MO	VG	
360	E-014-359	FISHER BEER SINCE 1884 / SAME	UT	VG	
361	E-014-363	FREE STATE BALTIMORE, MD. / SUPREME BEER HACKNEY ALE	MD	G	
362	E-014-374	SICKS' GREAT FALLS BREWERIES, INC. / SAME	MT	VG	
363	E-014-375	GREAT FALLS SELECT / SAME	MT	EX	
364	E-014-377	HAMM'S BEER BORN IN THE LAND OF SKY BLUE WATERS / SAME	MN	VG	
365	E-014-385	HUDEPOHL BREWING CO. CINCINNATI OHIO / SAME	OH	VG	
366	E-014-425	IT'S PRIMO IN HAWAII / ALOHA "OKOLE MALUNA"	HA	VG	
367	E-014-455	WALTER BREWING COMPANY / SAME		M	
368	E-014-473	BLITZ-WEINHARD BLITZ-WEINHARD / SAME (COPPER)	OR	VG	
369	E-014-505	GREENSBURG BREWING CO. GREENSBURG, PA. / OLD HOSS ALE OLD RELIABLE BEER	PA	VG	
370	E-014-529	HENRY F. ORTLIEB BREWY. CO. PHILADELPHIA, PA. / ORTLIEB'S ALE ORTLIEB'S BEER (VAR (A) BREWY)	PA	EX	
371	E-014-544	ST. CLAIRE BRG. CO. SAN JOSE, CAL / ST. CLAIRE BEER AMERICA'S FINEST	CA	VG	
372	E-014-555	STAG BEER STAG BEER / SAME	MO	EX	
373	E-014-570	WALTER BREWERY TRIPLE BREW BEER / SAME		VG	
374	E-014-577	A-1 PREMIUM BEER A-1 PREMIUM BEER / WESTERN WAY TO SAY WELCOME	AZ	EX	
375	E-014-580	AMERICAN BREWING CO. ROYAL ALE / AMERICAN BREWING CO. ROYAL BEER	HA	EX	
376	E-014-622	METZ BEER SINCE 1864 / SAME	NE	VG	
377	E-014-788	GOLDEN GRAIN BELT / FRIENDLY BEER FRIENDLY FLAVOR	MN	VG	
378	E-014-793	HIGHLANDER PREMIUM BEER	MT	VG	
379	E-014-807	PFEIFFER BREWING CO. ST. PAUL, MINNESOTA / PFEIFFER'S FAMOUS BEER	MN	EX	
380	E-014-999	(1) #14 BAVARIAN (2) #24 BLACKHAWK (PO) (3) #39 BUTTE (4) #47 COOK (5) #97 FREE STATE (6) #226 QUEEN CITY		VG	
381	E-014-999	(1) #39 BUTTE (2) #47 COOK (3) #50B COORS (4) #51 COORS (5) #377 HAMMS (6) #260 SCHMIDT		VG	
382	E-014-999	(1)E-13-16 PABST (2) #51 COORS (3) #63 DUQUESNE (4) #92 FORT PITT (5) #177 LUCKY LAGER (6) #188 MILLER		VG	
383	E-014-999	(SODA) (1) CANADA DRY OF ATLANTIC CITY (2) BUBBLE UP (3) SQUIRT (4) SEVEN-UP		EX	
384	E-014-999	(SODA) (1)COCA-COLA (2)SEVEN-UP (3)SQUIRT (4)TRU-ADE		EX	
385	E-014-999	14 DIFFERENT VARIETIES OF E-14-50 E-14-51 4-14-52 COORS (BILL MCKIENZIE'S PERSONAL COLLECTION)	CO	EX	
386	E-014-UL	BUDWEISER	MO	M	
387	E-015-002	PETER HAND BREWERY CO. / MEISTER BRAU "THE BEER"	IL	EX	
388	E-025-001	ALWAYS USE-BLUE RIBBON MALT EXTRACT & HOPS,		VG	

July 1998 JFO Auction-Closing August 19, 1998- Name & Mem #:

389	E-999-999	(SODA) (1) E-9 SARATOGA QUEVIC (LARGE LETTERS) (2) E-9 SARATOGA QUEVIC (SMALL LETTERS) (3) E-9 MANITOU (4) E-4 S&S GINGER ALE (5) E-4 CRYSTAL ROCK BEVERAGE (6) E-1 ENNO SANDER SELTZER AND SODA CO		VG	
390	F-002-016	VERNON BREWING CO. / GOLDEN CREME BEER	CA	VG	
391	F-002-017	DRINK WALTER'S BEER / SAME	CO	EX	
392	F-006-016	BECKER PRODUCTS CO. OGDEN, UTAH / SAME	UT	G	
393	F-006-999	"DRINK CASCADE GINGER ALE" / SAME		VG	
394	F-006-999	INDEPENDENT MARKET & GROCERY -COVER D'ALENE, IDAHO- / 204 N. 4 TH ST. PHONE 96	ID	VG	
395	G-001-008	EBLING'S EXTRA THAT GRAND OLD BEER (BOTTLE)		G	
396	G-001-019	OLD SHAY ALE (BOTTLE)	PA	VG	
397	G-002-001	BOSTON BEER CO. AMERICA'S OLDEST BREWERY EST. 1828 / BOSTON ALE--BEER THE BEST FOR OVER 100 YEARS	MA	EX	
398	G-002-003	HAMPDEN LIGHT BEER MILD ALE	MA	VG	
399	G-002-004	HAMPDEN MILD ALE	MA	VG	
400	G-002-005	HARVARD BEER ALE PORTER	MA	EX	
401	G-002-006	PENNSYLVANIA DUTCH OLD GERMAN BEER	PA	VG	
402	G-002-008	HACKER'S AMBERLITE EXTRA DRY	MA	VG	
403	G-002-009	HUDEPOHL BREWING COMPANY CINCINNATI, OHIO ENJOY HUDEPOHL BEER "IT'S TOPS"	OH	G	
404	G-002-999	DIAMOND GINGER ALE WATERBURY, CONN.	CT	G	
405	G-003-003	HAMM'S BEER "LEADS THEM ALL"	MN	VG	
406	G-003-005	ENGELKING'S BEER	IL	VG	
407	G-004-002	BLATZ BEER FOR GOOD TASTE	WI	VG	
408	G-004-007	MILLER BREWING CO. MILWAUKEE, WIS. MILLER HIGH LIFE BEER	WI	VG	
409	G-005-006	LION EXPORT BEER CINCINNATI, O.	OH	VG	
410	G-006-005	FORT PITT SPECIAL BEER	PA	EX	
411	G-006-006	GLUEK'S FIRST PRIZE BEER	MN	VG	
412	G-008-011	SUNSHINE BEER IT'S EXTRA LIGHT-IT'S EXTRA GOOD	PA	PO	
413	G-009-023	STEGMAIER BREWING CO. WILKES BARRE, PA. / STEGMAIER'S GOLD MEDAL BEER (BLACK ON RED)	PA	G	
414	G-009-025	STEGMAIER BREWING CO. WILKES BARRE, PA. / STEGMAIER'S GOLD MEDAL BEER (GOLD ON RED)	PA	VG	
415	G-009-038	SCHREIBER BREWING CO. INC. BUFFALO, NEW YORK (BLACK ON NATURAL)	NY	VG	
416	G-009-999	OPEN CAL GINGER ALE		VG	
417	G-013-002	ORIGINAL "MANITOU" PALE DRY	CO	VG	
418	G-013-003	PERFECTION		VG	
419	G-014-999	{7 PIECES SIMIALR TO G-14} (1) SINALCO (2) APOLLINARIS (3) FLORIDA BOY ORANGE (4) CANADA DRY (5) FRUCADE (6) CANADA DRY (7) SEVEN-UP (GERMAN&CANADIAN)		VG	
420	G-023-002	COORS GET:A:GRIP	CO	EX	
421	G-024-001	COORS LIGHT GET A GRIP	CO	M	
422	G-024-002	COORS GET A GRIP	CO	M	
423	G-027-001	BUD LIGHT (ON NECK LABEL) BUD LIGHT (LABEL) / EVERYTHING ELSE IS JUST A LIGHT	MO	M	
424	G-028-999	(1) #22 BUDWEISER (2) #4 YUENGLING		M	
425	G-034-001	THE BELMONT PRODUCTS CO. MARTINS FERRY, OHIO LICENSED MFRS. CUP-TOP PALE DRY GINGER ALE	OH	G	
426	G-034-999	CANTRELL & COCHRANE IMPERIAL (LOGO) DRY GINGER ALE		PO	
427	H-001-013	SUNSHINE BEER-ALES-PORTER (S IN SUN WITH RAYS)	PA	VG	

July 1998 JFO Auction-Closing August 19, 1998- Name & Mem #:					
---	--	--	--	--	--

428	H-002-004	BERGHOFF FORT WAYNE	IN	G	
429	H-002-007	"ENJOY BURGER BEER"	OH	VG	
430	H-002-013	DUQUESNE CAN-O-BEER -IN CROWN-SEALED CANS- "MATCH IT IF YOU CAN" (VAR (B) BLOCK LETTERS)	PA	VG	
431	H-002-016	DUQUESNE PILSENER "THE FINEST BEER IN TOWN"	PA	G	
432	H-002-019	FORT PITT BREWING CO.	PA	G	
433	H-002-021	M.K. GOETZ BREWING CO. ST. JOSEPH & KANSAS CITY MO. COUNTRY CLUB THE BRIGHT BEER	MO	EX	
434	H-002-026	KOEHLER'S THERE IS NO BETTER BEER!	PA	G	
435	H-002-029	ORTLIEB'S BEER-ALE	PA	EX	
436	H-002-036	C. SCHMIDT & SONS, INC. BREWERS IN PHILADELPHIA SINCE 1860	PA	G	
437	H-002-037	"SCHMIDT'S OF PHILADELPHIA" BREWERS SINCE 1860	PA	G	
438	H-002-039	DRINK TECH BEER	PA	VG	
439	H-002-040	TERRE HAUTE BREWING CO. TERRE HAUTE, IND. CV THE BEER WITH THE MILLION DOLLAR FLAVOR	IN	VG	
440	H-002-042	TRU-BLU BEER AND ALE	PA	EX	
441	H-002-048	WEBER WAUKESHA BREWING CO.-WAUKESHA, WIS. YOU WILL ENJOY WEBER WAUKESHA BEER	WI	EX	
442	H-002-060	DUQUESNE KEG-O-BEER "THE FINEST BEER IN TOWN IN CANS"	PA	VG	
443	H-002-999	(4 SODAS) (1) AMERICAN SODA WATER CO (2) IDRIS LEMON SQUASH (3) MOUNTAIN VALLEY MINERAL WATER (4) SUBURBAN CLUB BUBBLES		VG	
444	H-003-002	FAMOUS BEVERWYCK BEERS & ALE	NY	G	
445	H-003-004	DUQUESNE OF PITTSBURGH, PA. "THE FINEST BEER IN TOWN"	PA	VG	
446	H-003-006	EDELWEISS A CASE OF GOOD JUDGMENT	IL	EX	
447	H-003-007	ESSLINGER'S PREMIUM BEER	PA	VG	
448	H-003-009	FLOCK BREWING CO. WILLIAMSPORT, PA. DRINK FLOCKS BEER	PA	VG	
449	H-003-013	HOHENADEL BEER ALE	PA	G	
450	H-003-014	HORNUNG BEER ALE	PA	G	
451	H-003-015	DRINK IRON CITY BEER	PA	G	
452	H-003-017	KOEHLER'S THERE IS NO BETTER BEER!	PA	VG	
453	H-003-019	HENRY F. ORTLIEB BREWING CO. PHILA., PA. ORTLIEB'S PREMIUM BEER	PA	G	
454	H-003-022	SCHLITZ THE BEER THAT MADE MILWAUKEE FAMOUS	WI	EX	
455	H-003-023	THE WILLIAM SIMON BREWERY, BUFFALO, N.Y. SIMON PURE BEER ALE	NY	VG	
456	H-003-024	STEGMAIER BREWING CO. WILKES-BARRE, PA.	PA	VG	
457	H-003-025	STEGMAIER BREWING CO. WILKES-BARRE, PA. STEGMAIER'S GOLD MEDAL BEER	PA	EX	
458	H-003-038	WAYNE BREWING CO. ERIE, PA. WAYNE BEER & ALE	PA	VG	
459	H-003-044	G. HEILEMAN BREW. CO. LACROSSE, WIS. OLD STYLE LAGER	WI	VG	
460	H-003-999	(3 SODAS) (1) BIRELEY (2) CANADA DRY (3) NU-LIFE GRAPE		G	
461	H-004-001	ENJOY PRIMA BEER	IL	G	
462	H-005-006	KAIER'S BEER / MAHANOH CITY PA	PA	VG	
463	H-005-009	NEUWEILER'S / FAMOUS BREWS	PA	VG	
464	H-005-016	HAZELTON PILSENER / SAME	PA	G	
465	H-006-005	PABST BREWING CO. MILWAUKEE - PEORIA HTS. NEWARK - LOS ANGELES PABST BLUE RIBBON NO. U-263 / WHAT'LL YOU HAVE? PABST BLUE RIBBON	WI	G	
466	H-006-011	OLYMPIA BEER / OLYMPIA BEER "IT'S THE WATER"	WA	EX	
467	H-006-011	OLYMPIA BEER / OLYMPIA BEER "IT'S THE WATER"	WA	EX	

July 1998 JFO Auction-Closing August 19, 1998- Name & Mem #:					
--	--	--	--	--	--

468	H-006-012	PABST BREWING CO., MILW., WISC. PABST BLUE RIBBON DISPLAY NO. 2463 / WHAT'LL YOU HAVE? PABST BLUE RIBBON	WI	EX	
469	H-006-016	MILLER GENUINE DRAFT	WI	EX	
470	H-007-002	BLATZ MILWAUKEE'S MOST EXQUISITE BEER	WI	G	
471	H-007-009	ALWAYS SERVE POTOSI BEER PILSENER & EXPORT	WI	EX	
472	H-007-012	ENJOY MARATHON BEER	WI	EX	
473	I-007-004	ANHEUSER BUSCH BUDWEISER KING OF CANNED BEER	MO	VG	
474	I-007-006	BALLANTINE'S ALES BEER (3 RINGS)	NJ	VG	
475	I-007-008	BEST BREWING CO. HAPSBURG BEER QUALITY LAGER	IL	EX	
476	I-007-010	COORS BEER GOLDEN, COLO.	CO	VG	
477	I-007-015	FORT PITT BREWING CO. PITTSBURGH, PA.	PA	VG	
478	I-007-024	ENJOY KRUEGER'S ON DRAUGHT WHERE NOT AVAILABLE, DRINK IT FROM KEGLINED CANS	NJ	VG	
479	I-007-026	MILLER SELECT BEER	WI	G	
480	I-007-027	THE FAMOUS OLD NARRAGANSETT BANQUET ALE	RI	VG	
481	I-007-028	DRINK THE FAMOUS NEW ENGLAND ALE IN DOUBLE-LINED CANS	MA	VG	
482	I-007-032	FOR OPENING PABST TAPA CAN (VAR B)	WI	G	
483	I-007-034	PILSER'S ORIGINAL EXTRA DRY BEER N.Y. (COPPER)	NY	EX	
484	I-007-036	JACOB RUPPERT BREWERY NEW YORK	NY	G	
485	I-007-040	STROUDSBURG BREWING CO. STROUDSBURG, PA. STROUD-BEER	PA	VG	
486	I-007-043	FOR OPENING ACME BEER AND ALE	CA	G	
487	I-007-052	HAMM'S BEER SMOOTH & MELLOW	MN	PO	
488	I-007-060	STORZ BEER OMAHA	NE	VG	
489	I-007-065	HARVARD BREWING CO. LOWELL, MASS.	MA	VG	
490	I-007-070	NORTHAMPTON BREWING CORP. NORTHAMPTON, PA. TRU-BLU BEER AND ALE	PA	VG	
491	I-008-002	NORTHAMPTON BREWERY CORP. NORTHAMPTON, PA. TRU-BLU BEER AND ALE	PA	EX	
492	I-021-003	STEGMAIER GOLD MEDAL BEER (WHITE ON RED)	PA	M	
493	I-024-001	FOX DELUXE BEER	IL	G	
494	I-027-001	BLATZ / SAME	WI	G	
495	I-027-001	BLATZ / SAME	WI	EX	
496	J-010-001	FOR OPENING PABST TAP-A-CAN MADE IN UNITED STATES OF AMERICA / FOR BEER IN CANS MARKED KEGLINED	WI	VG	
497	J-011-001	SCHLITZ JOS. SCHLITZ BREWING CO. MILWAUKEE, WIS. U.S.A. / SCHLITZ THE BEER THAT MADE MILWAUKEE FAMOUS	WI	VG	
498	K-002-002	FALSTAFF (SHIELD & 3 STARS) (BLACK RED WHITE & YELLOW ON GOLD)	MO	EX	
499	K-002-004	BLATZ MILWAUKEE'S FINEST BEER (SILVER ON RED)	WI	VG	
500	K-002-005	REGAL BEER (SILVER ON GREEN)	LA	EX	
501	K-005-002	SCHLITZ THE BEER THAT MADE MILWAUKEE FAMOUS (VAR (A) METAL TAG ON BLACK BASE)	WI	VG	
502	K-011-999	PERLICK BRASS COMPANY MILWAUKEE WIS (EMBOSSSED ON BOTTOM PLATE) (MINIMUM BID \$40)	WI	VG	
503	L-004-007	GEORGE F. STEIN BREWERY INC. BUFFALO, N.Y. CANANDAIGUA EXTRA DRY LAGER BEER	NY	VG	
504	M-003-013	PHILADELPHIA BREWING CO. / OLD STOCK BROWN GLOW / PHILADELPHIA BREWING CO. (RED)	PA	G	
505	M-021-001	RAINIER STERLING	WA	G	
506	M-028-002	HAMM'S BEER ELMER CROSSER SHELTON, IOWA	IA	G	

July 1998 JFO Auction-Closing August 19, 1998- Name & Mem #:

507	M-030-036	STAG DISTRIBUTING CO (REST IN HANDBOOK) STAG-SCHLITZ-BLACK LABEL BEER RED CAP ALE	MO	EX	
508	M-030-999	CLICQUOT CLUB QUALITY SINCE 1881 CLICQUOT CLUB BOTTLING CO. 938 PHILLIPS STREET MISSOULA, MONTANA	MT	EX	
509	M-051-999	"TO A VALUED FRIEND & CUSTOMER OF" JOHN HUBER YOUR COCA-COLA (SCRIPT) ORANGE-CRUSH SALESMAN PH. EX 7-2343 COLFAX		VG	
510	M-051-999	DRINK KIST BEVERAGES		EX	
511	M-101-999	COKE IS IT! (SCRIPT) LOUISIANA WORLD EXPOSITION NEW ORLEANS MAY 12-NOV 11 1984(RED ON WHITE)	LA	M	
512	M-999-999	M-4-1 BLATZ M-4-2 BLATZ M-10-1 M-11-1 M-12-1 M-13-1 BALLANTINE (6 PIECES ONE MONEY G-VG)			
513	N-002-001	DRINK DIXIE BEER	LA	VG	
514	N-003-001	SCHMIDT'S LIGHT BEER	PA	M	
515	N-009-006	NEUWEILER BEER-ALE "NIX BESSER"	PA	VG	
516	N-009-008	VIENNA BREWING CO. CINCINNATI VIENNA STYLE BEER	OH	VG	
517	N-009-024	OLD FASHIONED BREWERY LACROSSE, WIS.	WI	VG	
518	N-009-035	HUSTINGS BEVERAGES LIQUORS-BEER-ALE	WI	EX	
519	N-011-999	ASK YOUR GROCER FOR BELFAST DRY-GINGER ALE-OR CALL DOUG. 0547 - 0548		EX	
520	N-011-999	ORIGINAL "MANITOU" PALE DRY GINGER ALE AND SPARKLING WATER	CO	VG	
521	N-039-UL	PEARL LAGER BEER THE GEM OF FINE BEERS (IN LOGO) W.L. MUELLER FRANKIE HALE YORKTOWN-CUERO		EX	
522	N-043-999	DEWEY PHILLIPS PRIEST RIVER, IDAHO	ID	EX	
523	N-085-UL	UTICA-CLUB (BLADE MARKED UTICA CUTLERY CO UTICA NY)	NY	G	
524	O-005-999	CANADA DRY		EX	
525	O-005-999	CERVEZA HEINEKEN		EX	
526	O-005-999	KIST		EX	
527	O-005-999	WHITE ROCK GINGER ALE		VG	
528	P-007-999	GOLDEN WEST SODA WORKS SAN FRANCISCO CA (VERY WORN)	CA	PO	
529	P-008-073	WM. J. LEMP BREWING COMPANY ST. LOUIS, MO. / SAME	MO	G	
530	P-008-146	ANHEUSER-BUSCH / SAME	MO	VG	
531	P-008-149	KESSLER BREWERY, HELENA,-MONT. / SAME	MT	EX	
532	P-015-011	PEARL LAGER BEER (IN LOGO)	TX	EX	
533	P-019-002	TOWNSEND BREWERY TOWNSEND, MONT.	MT	EX	
534	P-025-008	ADOLPHUS BUSCH / (EAGLE IN A) MALT-NUTRINE (PIC. OF A.B.) (BOTH BLADES BROKE AND STANHOPE GONE)	MO	G	
535	P-036-002	METZ QUALITY BEER SINCE 1864	NE	VG	
536	P-051-052	ENTERPRISE BREWING CO.S.F./YOSEMITE LAGER(BELL BROKE)	CA	PO	
537	P-057-006	SCHLITZ BEER (REST IN HANDBOOK)	WI	G	
538	P-057-021	TEXAS BREWING CO. FORT WORTH, TEXAS / SAME	TX	G	
539	P-064-001	THEO. HAMM BREWING CO. ST. PAUL, MINN. (BARMOUNT-RARE WITH BEER ADVERTISING-GREAT CONDITION EXCEPT FOR SPLIT ¼ INCH WIDE COLLAR RING THAT SEPARATES WOOD HANDLE FROM METAL SHAFT-GREAT PIECE-MINIMUM BID \$400)	MN	EX	
540	P-124-001	DISTRIBUTOR OF HORLACHER'S 9 MONTHS BREWERY BOTTLED BEER (REST IN HANDBOOK)	PA	EX	
541	T-001-001	ANHEUSER BUSCH (EAGLE IN A) NATURAL LIGHT BEER / SAME	MO	M	
542	T-001-002	MICHELOB LIGHT SUPERIOR TASTE IN A LIGHT BEER (EAGLE IN A) / SAME	MO	M	
543	T-001-003	BUDWEISER KING OF BEERS (EAGLE IN A) / SAME	MO	M	
544	T-001-004	BUSCH BORN OF NATURAL INGREDIENTS SMOOTH REFRESHING BEER (EAGLE IN A) / SAME	MO	M	