

H-12-ND

JUST FOR OPENERS

PO Box 64 Chapel Hill, NC 27514-0064 (919) 419-1546
Past Editors Don Bull (1979-83) Ed Kaye (1984-1988) Art Santen (1989-1993)

Membership Renewals / Annual Dues \$20.00

If the label on your Newsletter Mailing Envelope has an Expiration Date of 12/31/99, please pay your dues now. A membership renewal card should be enclosed. Other members please verify the expiration date shown on your mailing label. If you do not agree with the date please notify me.

H-12-ND New Discovery

Chris Quimby's Business partner turned up the H-12-ND shown at the top. A great find in the club's 21st year. It is a patented opener from Milwaukee, WI. Unfortunately only part of the patent date can be read. If anyone has any information on this opener please write.

2000 Convention Lisle, IL (22nd JFO Convention) (April 26th to 30th, 2000)

For anyone considering going to the 2000 convention please go ahead and register for rooms. The hotel is very busy during the week and even though our room block guaranteed through March 26th of next year, do not hesitate or wait until the last minute. Our rate is \$86 per night while the normal room rate is \$139 per night. You can always cancel your reservation if you are unable to attend. Please call 1-800-233-1234. Tell them you are with the 2000 Just For Openers Convention.

2001 Convention St. Joseph, MO (23rd JFO Convention) (April 18th to 22th 2001)

Don Whelan will be hosting the 23rd convention at the same location as the 1995 Convention, Ramada Inn in St. Joe MO. He has signed a contract and we are set. Don really wants to do this convention so the schedule was rearranged and his dates moved up from 2002. The 2002 will most likely be in either Fredricksburg VA or Williamsburg VA and will be hosted by Larry Moter. (Larry, Pat has never been to Williamsburg - Hint, Hint!)

"Just For Openers" Advertising Opener Book by Bull and Stanley

If you haven't ordered *Just For Openers A Guide to Beer, Soda & Other Openers*, you are missing out on a great book. And don't forget Don Bull's other books; *The Ultimate Corkscrew Book* and *Bull's Pocket Guide to Corkscrews*. Order form was in the last JFO issue or write, Bullworks, PO Box 596, Wirtz VA 24184.

Soda Advertising Openers sent to Schiffer

Soda Advertising Openers was sent to Schiffer publishing on September 13th. From there the process of formatting, editing, and finally printing and shipping takes about six months. It will once again be a great book for opener collectors. I hated for a new century to dawn before completion but it will be worth the wait.

1999 JFO Convention Final Comments by Bob McNary

The 1999 JFO Convention is passed and Y2K is just around the corner. I would like to thank Art Johnson and John Stanley for all their help, to make this a great convention. Also my thanks goes out to my companion Gloria Counts for putting up with me the last couple years of getting this affair together and all the help she gave during the convention. Also to my niece Cheryl Czaja of Buffalo, N.Y. for her great job putting the (convention) booklet together. To all members for their help with the tables and chairs that had to be set up for the auction and the open house. Thanks to all the members that took guesses on the bottle caps. The winner was Eileen Johnson with a guess of 1155, the amount was 1154. The split went to the H.E. Moffet cancer research center in Tampa, Fl. Thanks to all members in Florida for the great turnout, 9 out of 13. GOOD SHOW!!!

Thanks again to all that attended and hope ya'll had a great time.

Bob McNary

Member's Update

I must report the passing of two JFO members. Our thoughts and prayers go to the surviving family members.

Ray Schmeisser of Caldwell, TX passed away on April 27th. Ray joined JFO in July, 1991 and was an avid collector of "E" style openers.

Dale Deckert of Orlando, FL passed away on September 14th. Dale joined JFO in April, 1990. He was a longtime collector of openers and just this year received recognition in the "Guinness Book of Records" as having the largest opener collection in the world.

Despite two heart attacks in September, Larry Biehl is doing okay and should be home by the time this newsletter is mailed. Members wishing to send a card can write Larry at, 448 Crandon Ave, Calumet City IL 60409.

Art Johnson has been busy taking care of Eileen who is recovering from surgery. He must be doing a good as he was rewarded (see "Opener Trivia"). You can write Eileen at, 155 Hartford Ave E, Mendon MA 01756

Just For Openers "Auction Guidelines"

Please Note: Fee of 15% Will Be Charged on Consignments

This auction is a service to members of JFO. Submit consignments by sending a graded inventory list. Reasonable minimum bids can be established for good items. Any openers submitted for the auction should have a minimum value of \$1.00. Money realized will be sent 4 to 5 weeks of the closing date.

Please Write First Before Sending Consignment Material.

When Bidding Please! give the Lot Number and a Short Description with each bid.

**Please remember to at least sign your name on each auction page and keep a copy.
Please, Please, Please SEND IN YOUR BID SHEETS EARLY & NOT AT THE LAST MINUTE**

1999 ECBA (27th) Convention Reading, PA (July 14-18 1999)

One of the hard things to do in life is to get the Stanley family on the road early. Pat likes her sleep (since Corkie has go out at Midnight or later to potty) but Corkie, her and yours truly were finally on the road by 7:35 Wednesday morning. Pat did seem to enjoy driving my new Ford truck. It was a long day after a 30 minute wait in traffic below Richmond, VA and the always fun drive around Washington DC. We finally arrived at Reading at 4:00. The weather was great that day but the temperature started going back up each day afterwards and by Saturday was near the 100 degree mark. The hotel was the Sheraton Berkshire which was very near the Inn at Reading site of the 1994 JFO Convention.

We had an end room so unloading was not too bad except for the case of *Just For Openers* books I brought to sell. As with recent beer shows the attendance was a little down and the "smalls" were really getting tough to find. My only purchase the first day was a P-90-3 Hupfels. I did complete some small trades with Harold Queen (he was nice enough to trade back a B-27-3 Koehler to complete my B-27 collection). Norm Jay purchased some bar mount openers and a couple of pre-pro mugs. Book sales were a little slow that day, but by the end of the show I would sell (oops Pat sold 12) all 29 books that I brought. The new *Just For Openers* book was a quick selling item if people could actually see the great pictures.

Thursday morning Norm Jay made a one and a half hour drive to Jim Thorpe, PA to see Harold Queen's collection. We spent over two hours looking at a lot of nice openers. Harold has a bar area in his basement filled with local breweriana items. His openers are in a work room being displayed on peg board (the Pennsylvania collection) or in the small glass top with cardboard side display cases. Harold's interest in openers covers many areas with Pennsylvania leading the way followed by M-3s, "O" type wall mounts, non-beer Pennsylvania, "C"s, and some corkscrews and cigar box openers. Norm learned as I already knew that Harold and Boots are big Penn State football fans. If anyone ever turns up any Mauch Chunk, PA (Jim Thorpe previous name) please keep Harold in mind.

On the way back to the hotel we stopped at Jodie Farra's antique mall in New Rheingold, PA. Jodie is a breweriana dealer and has turned up a lot of nice openers in the past. Norm did find an E-4 Neustadtl that he needed for his collection.

We arrived back at about 2:00 and things were picking up including the temperature. Our air conditioner was okay but not great. I did keep the room open for selling and made a couple of trips around to see what else was available. I added 3 more wood handle corkscrews with the best being a P-13 Schlitz. Larry Moter and I completed another trade but this one was certainly on the small side. That evening I stayed in the room trying to sell books and some of the "miscellaneous" openers I brought. Sales were not too bad.

Friday morning Norm and I made a one hour trip to Ben Hoffman's house. Ben and Cornelia live in Perkiomenville about 45 minutes from Philadelphia. Ben has his main collection displayed in small glass top cases. Like Harold he specializes in Pennsylvania openers, M-3s (Ben only needs 3 to complete his collection, Seitz, Hialeah, and Trommers) and cigar box openers. He also collects most east coast beer openers and "C" types. I would estimate that Ben has close to 80 percent of all known PA openers. We stayed nearly 3 hours. Ben and Norm even worked out a trade with Norm getting a K-6 Pearl and Ben getting some cigar box openers. The K-6 was pretty rough but Norm was happy to get it and now only needs a K-7 Budweiser and a K-10 Schlitz to complete his bar mount collection.

1999 ECBA (27th) Convention Reading, PA (July 14-18 1999) (Continued)
--

We were back at the hotel by 1:30. One thing this hotel had was good food. The breakfast buffet was great and I had the lunch buffet with Norm and Judy. That night was the ECBA banquet so I completed a buffet sweep that day with each meal being excellent.

Pat was able to hit some of the local outlet malls and Corkie spent her time guarding the room. That evening Pat started carrying the new opener books around and sold 10 that night. Many of the buyers were somewhat interested in openers but really liked the book and its appearance. Openers found in room-to-room were scarce so I once again spent most of my time trying to sell books and general openers (I had brought foreign, non-beer and some lower end American beer openers). That evening I did purchase a P-133-UL Moerlbach from Rich Alonzo but it was not in the best of condition.

Saturday morning was the ECBA business breakfast followed by a public show. The club could not obtain a volunteer for newsletter editor so the duties will be rotated between three people with your JFO editor volunteering to do the Spring issue next year (if anyone has any good breweriana articles please let me know). The show had a 100 tables but hardly any good openers. Larry Moter did find an A-21-81 Schlitz. Pat helped me sell the last of the opener books and by 1:00 we were ready to head back to Durham. I must admit that the local collectors set-up a great Reading, PA breweriana room. Twenty-four different lithos were on display. Thanks to Scott Parzanese for a nice convention. JFO members in attendance were Norm Jay, Harold Queen, Larry Moter, Kenny Ostrow, Herb Haydock, and Ben Hoffman with Art Johnson Jr, Tom Gormally and Joe Paczkowski. I traded Art Johnson Jr a P-5-10 Bergner & Engel for several miscellaneous openers (O-8 Crystal Rock, B-49 Lancaster, E-9 Beverwyck, G-5 Schemm and a N-56 Pepsi-Cola). The drive home was tedious with lots of traffic but we arrived safely by 9:30. Sunday was opener clean up day and NABA was right around the corner. Next year's ECBA convention is in Somerset, NJ.

Newsletter Content and Deadlines for Sending in Articles and Receiving Newsletter				
	January Issue	April Issue	July Issue	October Issue
Newsletter Content	New Additions to Handbook	Membership Directory	Convention Highlights	New Discoveries
Articles	December 1st	March 1st	June 1st	September 1st
Receiving	January 31st	April 30th	July 31st	October 31st

1999 NABA (28th) Convention Rochester, NY (July 28-August 1 1999)
--

We left right after work on Tuesday. Our first night destination was Frederick, MD. It was after 11:00 when we rolled into the hotel parking lot. Pat, Corkie and I were three tired puppies. Early Wednesday morning we headed up US 15. I expected a seven hour trip but it was eight and after 4PM before we arrived at the Rochester downtown Holiday Inn. Right off the bat a couple of NABA members told me about hotel problems with check-ins and a couple of cars being broken into. We would also be sharing the hotel with an African-American Methodist Convention. During our stay they were all nice to us and some were even curious about our hobby. Being in a so-so downtown area was not a happy thought for Pat and myself. When we found out how tough parking was we left the F-150 parked out front for two days before we had to move it over to the side of the hotel. Our room was nice and I found a few other rooms open but my main competitors, Norm Jay and Larry Moter, were already prowling the halls.

1999 NABA (28th) Convention Rochester, NY (July 28-August 1 1999) (Continued)

Unlike previous NABA conventions, this one was slow and never picked up much speed. Rochester, NY is some distance from the heartland of NABA and the low turnout reflected this fact. The good news was a lot of familiar faces and everyone seemed to have a good time. Even Corkie the Yorkie seem to enjoy us having the room open to try and sell the *new Just For Openers* book. That evening was mostly socializing and I can't remember getting any openers save for a couple from Tye Schwalbe (A-23 non-beer and an E-3-50 Gipps). Thursday was a much better day for openers. I started off by buying a small pile of openers from Vic Kroll (the same JFO member of the Naples Convention fame). This time Vic did not have the hoard he had at Naples but I did get a B-21-UL Mathie, a H-2-3 Atlantic and several miscellaneous openers.

That afternoon JFO member Phil Mandzuk was finally able to check in to the hotel after being denied a room the day before even with a confirmation slip. Phil brought three milk bottle cases full of Canadian openers with a few American openers thrown in the mix. Before I got to see Phil's openers, Pat and I went with Boots and Harold Queen to the local micro brewery for supper. The Empire Brewery served good food. Afterwards Mark Barren came by the room and we finally completed a trade. He received a M-3-40 Deer Park (Red) and a E-7-83 Moerlbach while I got a P-116-1 A-B, E-8-106 Iroquois, E-4-195 Standard and B-21-305 Schwarzenbach in return.

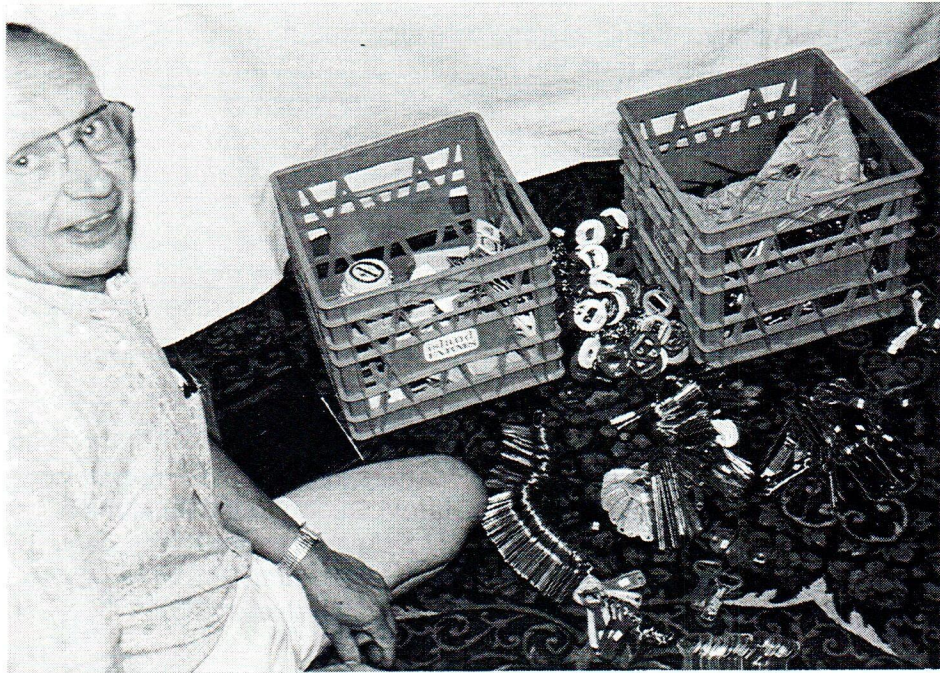
That night Larry Moter led the way into Phil's room. Phil's wife Judy was keeping an eye on the openers and graciously turned us loose to look through the crates. Of course Larry had to check the "wire" case. I spent my time going through all of the other types. There were ring after ring of openers. Some "A"s, a good number of "B"s and "C"s, lots of "E"s and lots of miscellaneous. Larry ended up with 53 different Canadian wires and I bought eight "H-10"s, a C-21-1 Crystal Rock, 5 different wires, a Frontenac pipe tamping tool and an A-23 Red Cap Ale. My selection made me a happy camper and I know it made Larry's show as far as buying openers.

Friday was the NABA auction and I failed to spot any openers or corkscrews for sale. With a minimum starting bid of \$50, it is rare to find openers being auctioned. Friday night I attended the NABA banquet and for the most part spent most of my time that day and night trying to sell the JFO books. Saturday was the public show open to the public. JFO members walking in were Mark Barren, Leo Blatz and Bill Arber.

Other members at the show besides Norm Jay, Larry Moter, Harold Queen, Vic Kroll and Phil Mandzuk were , John Ferguson, Herb Haydock, Jim Kaiser (all NABA board members along with Norm and Larry), Chuck King, Roger Levesque, George Love, Dan Morean, Ken Ostrow, Bob Post, Larry Sherk, and Mark Zeppenfelt. We also gained two new members from the convention, Steven Clovis and Pat Stambaugh. My best purchase Saturday was a 1919 Vaughan catalog. Don Bull has shown it before but I was very happy getting my official "Vaughan Catalog". Phil Mandzuk sold me an O-14 Labatts, a P-7 Carling and an O-5 O'Keefes. By noon it was time for Pat, Corkie and me to head back home. It was a pretty long and uneventful drive and it was 1:00 AM when we arrived in Durham. Another good show and we (Pat and myself) sell 25 JFO books.

Next year's NABA convention is in Naperville, IL (just a few minutes from the Hyatt Lisle site of next year's JFO convention). The dates are August 2nd through August 6th. This one promises to break all previous NABA Convention attendance records. Just remember you need to be a NABA member to attend.

1999 NABA (28th) Convention Rochester, NY (July 28-August 1 1999) (Continued)



Harold Queen checking out two milk crates full of openers brought by of Phil Mandzuk's



Harold Queen getting "Down & Dirty"



Larry Moter holding those precious "E"s

1999 BCCA (29th) Convention Phoenix, AZ (September 8-11 1999) (by John Cartwright)

The 29th Annual BCCA Convention was held in Phoenix, Arizona this year from September 8 - 11. More than 600 collectors and guests attended. Among them were some JFO VIPS -- namely Steve Armstrong, Bob Campbell, Herbert Haydock, Nick Johnson, Art and Dorothy Santen, Brad Vifquain and Don and Cora Whelan! I hope I did not miss anyone.

There was more heat outside than inside (109), unfortunately. The trading was more laid back than fast-and-furious. The setup was not very good, using one big room and a small one and also using a tent in the parking lot!

Thursday night, I helped out at the micro-beer tasting, which was the highlight of the show! Nine micro-breweries poured 15 different beers to sample. The Milk Stout from Bandersnatch Brewery was terrific! Luckily the brewery itself was located right across the street. Chili Beer was also very good.

The Friday-night Auction provided some spirited bidding on a few cans but not much in the way of quality breweriana. Because of Thursday and Friday nights' events, the room to room action was virtually non-existent after Wednesday night.

Continuing the slow trend the Saturday show did not start until 11:00 A.M. The public attendance was disappointing; it was probably deterred by the five-dollars-per-person entry.

However, I was able to pick up a P-55-UL H. Weinhard's from Nick Johnson and a N-29-XX Polar Ginger ale from Don Whelan. They always seem to have a least one opener I want.

I flew in to Phoenix, so I was not able to hit the malls, which usually turns up some goodies. But I did manage to see a couple of collections while in town. Unfortunately, I did not have a lot of time to see them. The search will have to wait until the next trip.

Ollie and Shirley Hibbeler's Safari to the Great Northwest

Ollie rarely misses an ABA Convention but a chance to go to the Northwest US and Western Canada made him absent. The three week trip in June included some stops in Montana. Here is Ollie's explanation of one stop at The-Middle-Of-Nowhere, MT.

We were in So. Central Montana heading north to Canada. We had driven about 80 miles without so much as a gas station. Came to a small town of Sulfur Springs, Mont. (Pop. Approx. 100). We ate at the town's only restaurant and got gas at their only service station. While pumping I saw a pick-up drive up and open the door to a small junk and antique shop. Paid for the gas and went next door.

Owner said he had a minute to spare as he had to meet someone. Looked the place over in 5 minutes. He had some common E's and I's. Told him what I was interested in. He replied that a lady had been in recently and bought several good ones. He knew she was a serious collector as she brought the "books" in with her. I asked, "Was she on the short side?" "Was she about ___ years of age?" (I'll leave the numbers out for now.) He said, "yes".

I got home, called Harriet Waldo up (she lives 20 miles from me) and told her to stay OUT of my territory. She looked up her May trip and sure enough --- IT WAS HER! Miles and miles from anywhere!

October New Members, Renewals, Address Changes & Corrections

Just For Openers now has 332 members (New Members: Numbers 921-937)

Mem #	Last Name	First Name	Spouse	Street	City	State	Zip	Phone/E-Mail	Specialties/ (Sponsor)
929	Campbell	Alec	Nancy	PO Box 1323	Crossfield Alberta	CAN ADA	T0M 0S0	(403) 946-5293 (ac_ent@telusp lanet.com)	All Types of Bottle Openers
927	Clovis	Steven	Sharon	3246 Woodfield Dr	Walworth	NY	14568-9442	(315) 986-2857	(1999 NABA Convention)
411	Cross	Robert "Red"	Dorothy	10825 W Cameo Dr (Address Change)	Sun City	AZ	85351-2648	(523) 977-5397	Any or All Domestic, Foreign Beer or Soda or Non-Beer Openers
934	Eichhorn	Edward	Theresa	2010 Sandia Ct	Lusby	MD	20657-4018	(410) 326-6378	Breweriana All Areas (ABA)
931	Hamilton	Dan	Joan	1410 Terrace Dr	Madison	IN	47250-2952	(812) 265-5681 (hamilton@seid ata.com)	All (Bullworks WWW)
932	Hoyt	Jim		630 Pinefrost Dr	Monroeville	PA	15146-1653	(412) 372-5070	Beer Bottle Shaped Openers & Beer Adv. Corkscrews (Ben Hoffman)
925	Irrig	William	Nancy	6406 Whippany Way	Burke	VA	22015-3427	(703) 455-9009 (wirrig@aol.co m)	All Domestic (JFO WWW)
926	Johnson	Edward		1290 Poquonock Ave	Windsor	CT	06095-1811	(860) 688-6795	Connecticut Openers esp. from Hartford, certain other New England & New York Breweriana (Paul Gauvin)
924	Lee	J Michael		2053 5th Ave	San Rafael	CA	94901-1765	(415) 457-1908	Key Shaped Beer Advertising (Don Bull)
804	Lendy	Dave	Shari	1927 Allen Dr (Address Change)	Geneva	IL	60134-3109	(630) 208-6950	US Beer & Malt Openers (Esp Illinois)
928	Rose	Richard	Diane	23 Phillip Ave	Burlington	MA	02180-5504	(781) 272-6457	Soda & Beer (Cymba WWW)
921	Russell	George	Julye	3537 Pineridge Cir	Kissimmee	FL	34746-3671	(407) 870-1986 (julye61@aol.c om)	All Wall Mounts, Flat Figurals, Face Wall Mounts, Just about any Kind of Opener (Dale Deckert)
616	Sipress	Bernard	Mildred	21 Hilltop Ln W (Rejoin)	Columbus	NJ	08022-1007	(609) 298-9114	Beer Openers & Cigar Boxes (Ben Hoffman)
930	Stambaugh	Pat	Louy	718 S Lakeshore Dr	Lake City	MN	55401-1849	(651) 345-4446 (pas02@exrch. mayo.edu)	Minnesota Breweries (All Types) (1999 NABA Convention)

October New Members, Renewals, Address Changes & Corrections (Continued)

935	Thompson Jr	Glenn		PO Box 1391	Waynesboro	VA	22980-0933	(540) 943-8423 (gwtomson@cfw.com)	Drink, Beer and Paint Openers (over 765 in collection) (Bullworks WWW)
936	Van Der Schot	Gerald		Plesmanlaan 105	1171 EM Badhoevedorp	The Netherlands		(+31-20-4493116) (gvanderschot@usa.net)	Any Advertising Openers & Corkscrews (No Souvenirs) (Cymba WWW)
923	Westlund	Jerry	Helen	606 S Main St	Groton	NY	13073-1346	(607) 898-5014	"I"- "E"- "C" "I"- Mostly & Can Piercers of All Kinds
933	White	Bruce		3976 W Cindy St	Chandler	AZ	85226-3879	(480) 899-1538	Beer Openers Types "C", "E" & "I", some Soda & Cigar Box Openers (JFO Book)
937	Wideman	Rod	Cathy	5325 N Hillary Cir	Parker	CO	80134-5404	(303) 840-5129 (rwideman@ix.netcom.com)	"I"-7"s, Mini Cans (Don Whelan)

New/Change E-Mail Addresses

Leo Blatz	leo@travelnurses.com
Bob Campbell	bobcaz8@aol.com
Alec Campbell	ac_ent@telusplanet.com
Dan Hamilton	hamilton@seidata.com
William Irrig	wirrig@aol.com
Abby Nash	asn6@cornell.edu
Gibson Pearis	gibp@qni.com
Pat Stambaugh	pas02@exrch.mayo.edu
Glenn Thompson	gwtomson@cfw.com
Rod Wideman	rwideman@ix.netcom.com
Mark Zeppenfelt	uuubuy@aol.com

(Change)

That's Jake



AUTHORIZED DEALER

Linda A. Joynt
President



Anheuser Busch Gift Shop
And Catalog Center

EAGLE COLLECTIBLES, INC.

22 East Main St.
Belleville, IL 62220

(618) 257-1283
Pager (618) 782-0491
Fax (618) 257-1284
E-mail - abgifts@peaknet.net

'If I'd known you were bringing bottles with those easy-opening, twist-off caps, I'd have packed a bigger wrench.'

Spouse's Corner

by Pat Stanley, the Editor's Spouse

John said I must complete my Spouse's Corner before I head to Asheville, NC for a conference. I planned to write it upon my return, but he wants it in the mail before he heads to New Hampshire to visit Gary Deachman a few days after I come home.

So, here I am hogging the computer while he is still awake. I knew it. He just got off the phone with Don Whelan and wants to check his email. Too bad. So off he goes to snooze through some more football.

In the last issue, I asked members to send me ideas and pictures on how they display their collection. John Hall responded with lots of pictures. He's been very creative in using his limited space since Anna won't let him display openers in the living room and bedroom. His "I" openers are in the hallway. They looked like he had wired them in place. Then he changes around what he displays in frames in the den. In the pictures he sent, he had all the Canada Dry together, Millers in another frame, and A-12s were together. The PA openers were another grouping on a keystone shaped board. He had some kitchen type openers on a peg board that goes down into a case, something I had not seen before. Anna had some kitchen type openers in the utility room on a peg board.

Thanks for taking time to share your ideas with us, John.

In the July issue, I also expressed the goal to slowly read through all the issues of JFO, discuss some of them in each quarterly Spouse's Corner and develop an index for all issues. The index is being created behind the scenes. Maybe I will share some with you in the next newsletter.

The newsletters were short in the beginning, so last night I read through all the published issues from January 1979 through October 1980.

Why did Don Bull start the newsletter? ".....to serve as an arm for collectors of openers to broaden their collection through contact with other collectors and to attempt to establish a running catalog of new finds". The newsletter certainly has brought collectors together and cataloged lots and lots of new finds.

In 1979 the newsletter subscription was \$5 per year. I will never forget how hard it was for John to increase the amount to \$20 when he had to switch from bulk mail to first class. In twenty years, I think it's a great buy!

In the beginning Don often requested historical information, new discoveries and ideas from the subscribers. To this day, input from the readers continues to be the lifeline of "Just for Openers".

In the first issue, Don included an "Opener Value Survey", but collectors were not ready to share that information. They were, however, willing to include non-beer openers in the listings.

Ed Kaye submitted the process he uses to clean openers in the first issue. The extra work paid off, usually in bringing a price 25 cents over what he paid for the item. Now, let's see. The newsletter went up \$15 in 20 years. Will Ed now sell those baseball players for \$15.25 over his cost? I don't think so. In fact, he probably won't sell them at all!

Spouse's Corner by Pat Stanley (Continued)

In the April 1979 issue, Don included reference materials information. Bob Kay was working on a book on mini bottles. There was an interesting compilation of patents for corkscrew collectors in the Guide to American Corkscrew Patents. I haven't heard about these, but the third one Don listed is in John's library, Who's Who in Brew.

By the July 1979 issue, it was obvious that the newsletter was reaching it's goal. More and more interest was reflected in a longer newsletter.

Don Reed shared the average price of openers he purchased "up to 1977", "to 3/78" and "to 3/79". \$1.07, \$2.60 and \$3.31 respectively. I'm pretty sure John Stanley's average is significantly higher. The postage he pays might be close to \$3.31.

In April 1979, Art Santen sponsored the first Bottle, Can and Corkscrew Openers Convention on a Sunday at a church. (Is that where the name church key came from? No, see the January 1980 issue for that story.) Art was wearing a necklace made of openers and his daughter wore a sash for "Miss Opener 1979". We never know what Art will show up in at the annual convention, but we can be sure that he will be decked out in some costume. Captain Corkscrew is the most memorable to me. Only 7 people attended this show, back in the days when Art only had 3700 openers.

Michael Jordan submitted an article for the April '79 issue. Now, I don't know much, but was this "the" Michael Jordan??? The article was "An American Art Form". Now that sounds more like Dennis Rodman wrote the article. Anyways, it was about the figural bottle openers and announced that there was a club for those interested. The Figural Bottle Opener Collectors Club was formed in Ephrata, Pennsylvania in May of 1978. Bonnie Bull was secretary.

Don't you agree, July 1979, the third issue and interest was definitely there!

The October 1979 issue, included information about placing ads for 10 cents a word. John doesn't like to count words, so he allows ads free. I guess that's good, as I'd be counting words, sending bills, keeping up with receipts. I'd rather be reading back issues of JFO!!!

A copy of a March 1965 opener order form for Anheuser-Busch wholesalers was included in the 4th issue. You could get a thousand openers for \$10.75. If you ordered 50 M, the price dropped to \$9.90 per M. Is that how Art got his first 3700 openers? What was amusing is that the imprinted openers could only be sold to States where imprinted openers were legal. Openers without imprinting were available to States where imprinted openers were illegal.

In the October 1979 issue, Art Santen submitted an article about the first Just for Openers Convention held in Connecticut. Art added 280 openers to his collection and made eight new friends. The second JFO Convention would be held in St. Louis with Ollie Hibbeler as sponsor.

So ends the first year of the newsletter.

The subscription for 1980 went up to \$7.50 and people were slow sending in their renewals. John goes through this every year, concerned about lost interest. Then, in come the renewals and more!!!

Spouse's Corner by Pat Stanley (Continued)
--

The Dictionary of Word and Phrase Origins explained the term "church key", but an old-time brewery worker, Mr. J.R. Oberhofer from Milwaukee set the record straight. Everyone in the brewery where he worked for about 35 years carried an opener that looked like the top end of the kind of heavy ornate key used to unlock church doors, so it came to be called "church key".

In the April 1980 issue, Joe Cardone submitted the average price of openers sold in his first mail auction, \$3.39. In the July 1980 issue, his second auction brought an average of \$3.76. In October 1980, the third auction average was \$3.48 (Maybe people started holding onto the less common ones?) Those were the days!

By April 1980 Bob Kay's book on mini beer bottles was nearly off the press. Don and John know what a glorious day that is!

There was a Special Edition between the April and October 1980 issues to tell all about the 2nd JFO Convention in St. Louis. It was a lot of fun and everyone enjoyed trading. The results of a survey about formally organizing a club were reported. The majority wanted "no dues, no meetings, no officers". And so, JFO continues to be a group of subscribers.

In the July 1980 issue, suddenly lots of brewing companies and manufacturers started appearing. Don's request for information were being answered. At the end of the article, there was a list of opener manufacturers and the known types of openers they produced. I'm sure the pages of that newsletter were well worn.

The October 1980 issue continued with historical information, lots to include in my index! There was also an article on Can Piercer / Cap Lifter Variations. Dick Britton knows all this, I'm sure.

I have not been to the campus libraries to explore as I had hoped, as I'm seldom on campus right now. A long-term project keeps me in a satellite office 4 miles from my permanent office in the heart of the UNC campus. I sure miss it, especially as cool fall days approach.

I better pack for the mountains of North Carolina where it will be a little cooler.

Until next time.....

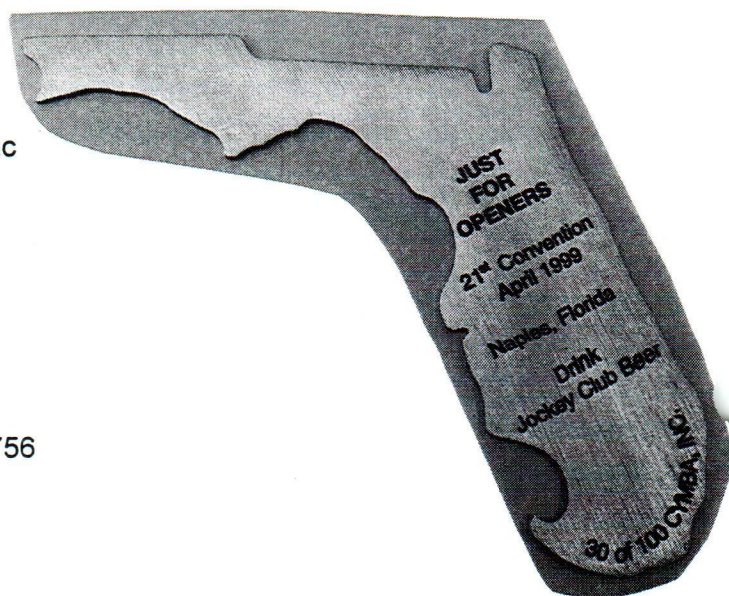
1999 JFO Convention Opener

1999 JFO Convention Opener Made by Cymba, Inc

Nice heavy metal, each one serial numbered
Most of the numbers 51-95 are still available
(If possible a selected number will be sent)

Cost \$9.00 plus \$1.00 shipping, total = \$10.00

Mail check and make payable to:
Art Johnson, 155 Hartford Ave E, Mendon MA 01756



"Opener Trivia"

Hopefully this will be the final grading scale. We have a 1-10 scale in the new soda book and to match it, I will use the following grades in the future. Numbers 1,2,4,6,8,10 cover most cases and occasionally I might use 3,5,7,9 grades. The current auction uses this scale.

Grading (G): 1-Poor, 2-Fair, 4-Good, 6-Very Good, 8-Excellent, 10-Near Mint or Mint with 3-Fair Plus, 5-Good Plus, 7-Very Good Plus, 9-Excellent Plus

The Loop Seal "New Discovery" shown in the April issue is actually a "D" New Discovery in this issue.

First item to discuss is a question posed by Jack Ford. Most everyone has seen an A-14-1 Rainier which was supposedly issued to signify the Golden Gate Bridge in San Francisco. In 1986 a new listing was submitted for the A-14 for Jacob Schmidt Brewing Co. St. Paul, Minn. / Schmidt's City Club. Has anyone actually seen this opener? The St. Paul/Minneapolis area is known as the "Twin Cities" and several bridges cross the Mississippi to connect the two cities. I suppose this opener could be legitimate and if anyone has one, could they send a picture or xerox? The A-14-1 Rainier is shown below left.



John Hall wrote and found a B-53 "Milwaukee Mayer Custom Made Honorbilt / A. Skinrood, Kimball, So. Dak.". Does anyone know what kind of company Mayer was?

Ebay auctions just keep picking up steam. Every week I notice one of the JFO members entering into the bidding process. Like it or not Ebay is the best place to find elusive openers. Unless you are fortunate enough to buy a nice collection, Ebay provides the opportunity to purchase good openers and corkscrews. Like any other kind of auctions you will usually pay a good price and sometimes a high price.

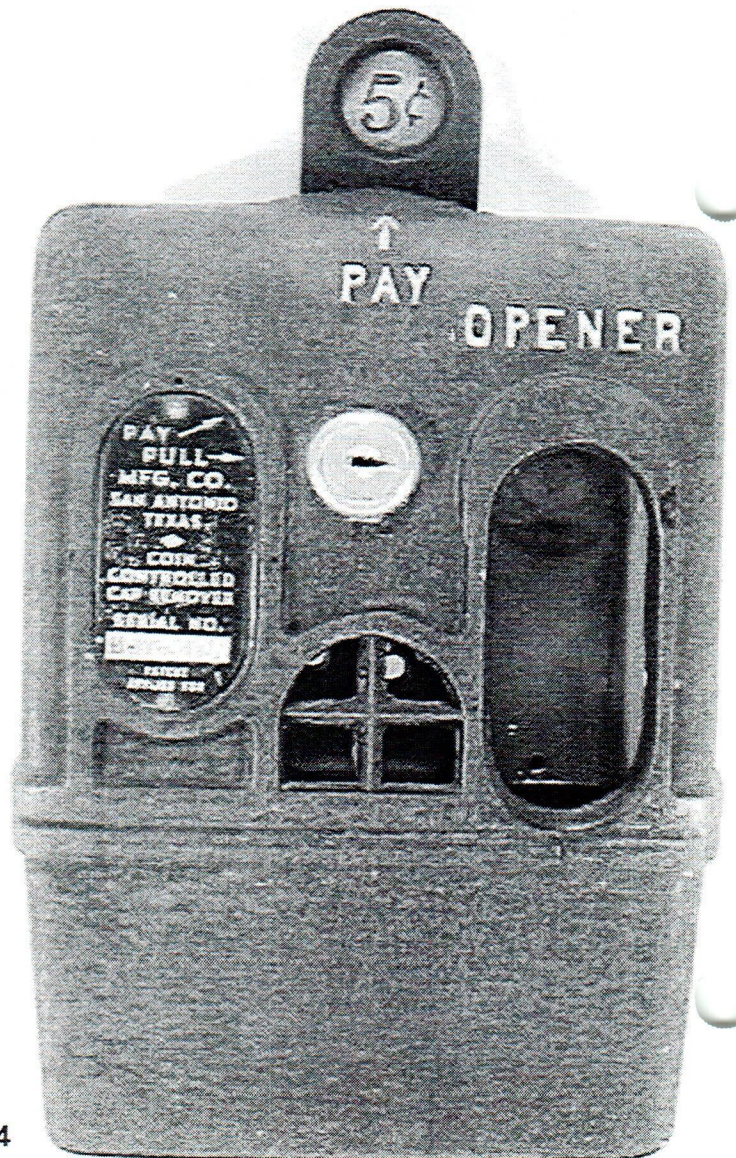
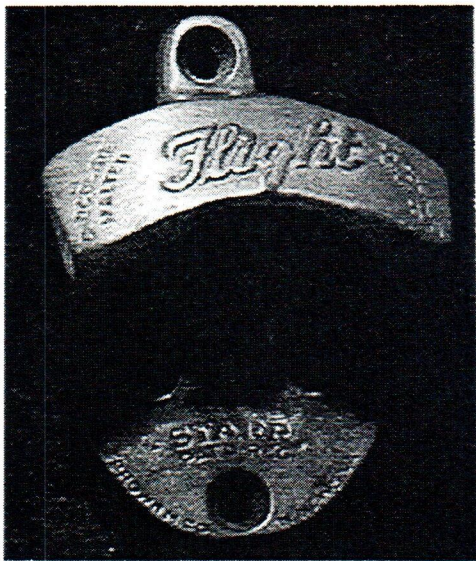
Some of my Ebay purchases since the last issue are the following: A-9-1 Buffalo, A-23-UL Grain Belt, A-29 Whistle, A-33-1 Ackerman, A-35-18 Walla Walla, A-38-6 Kings, B-1-20 Susquehanna, E-4 Nehi, E-8-UL Old Colony Fall River, Mass., E-9-37 Krantz, E-9-UL New England, E-17-UL Ohio Brewing Columbus, E-17 St. Louis Soda Water Co., E-22-UL Tivoli Lager S.F., F-5 Coca-Cola, M-27-UL Lone Star, M-29-UL Jax, M-50-UL Narragansett, M-56-1 Pfaff, M-107-1 Narragansett, N-39-UL Pearl, N-80-Jax, O-4 Dr. Pepper, O-501 Coca-Cola (Swivel Hook Wall Mount) and a P-74-UL Arnold & Co. Ogdensburg NY. These are my main buys and as the case is now I have lost out on several good pieces, a couple being an O-1-1 Hamms and a P-16-1 Narragansett in mint condition.

Other items of note are a just sold A-1-28 Yosemite for \$239 (third high bidder was at \$150). The month of August was especially good for Art Johnson of Mendon, Mass. First he gets unlisted M-3 Osterstyoock Beer from Easton, PA and then he gets the very tough M-3-27 Trommers. He followed this up in September with a M-73 Four Roses Whiskey from Louisville, Ky. Art's two M-3 purchases are shown top of the next page.

"Opener Trivia" (Continued)



Below is a Starr oversized O-5 (Coca-Cola shown for comparison) Flight Malted Milk wall mount opener which brought \$414 on Ebay. To the right is a very unusual Pay Wall Mount Opener made by the Pay-Pull Mfg. Co. of San Antonio, Texas and dating from the 1940s. I had never heard of this one. It sold on Ebay for \$885. A nice cross over for coin operated machine collectors.



1999 New Discoveries to the 1999 Handbook

A-64 LARGE FISH
6"

OLLIE HIBBELEL/VERNE VOLLRATH

2000 (1-2)

1. LEINENKUGEL'S LEINIE LODGE CHIPPEWA FALLS, WISCONSIN (PIC OF CANOE)
2. MILLER HIGH LIFE

A-65 LONGNECK BOTTLE
MARKED "PATENT PENDING CANS BOTTLES"
3 1/2"

ART SANTEN

2000 (1-3)

1. BUD LIGHT
2. BUDWEISER
3. TEQUIZA

B-75
CAP LIFTER/SCREWDRIVER TIP
3 1/16"

JOHN STANLEY

2000 (1)

1. SUNSET MERCANTILE CO WALLACE IDAHO

C-51
CAP LIFTER
2 1/4"

JACK WESTALL

2000 (1)

1. CELIS BREWERY AUSTIN (LOGO) TEXAS

C-52
CAP LIFTER
2 11/16"

BEN HOFFMAN

2000 (1)

1. CELEBRATING 125 YEARS HONESTLY FRESH STRAUB BEER & LIGHT SINCE 1872 ST. MARYS, PA / POWDER METAL -CAPITAL- OF THE WORLD ST. MARYS PENNSYLVANIA

D-25
LOOP SEAL REMOVER
5 1/2"

ED SCHAEFER

2000 (1)

1. THE ERIE BREWING COMPANY.

E-32
THREE FRETS/WOOD HANDLE
3 3/4"

JOHN STANLEY

2000 (1)

1. THE WEHLE BREWING COMPANY WEST HAVEN, CONN. OX HEAD BEER MULE HEAD ALE INDIA PALE ALE

G-54

CAP LIFTER

MARKED "T S & J PROV.R.I.U.S.A."
2 3/4"

JACK WESTALL

2000 (1)

1. ANDERSON VALLEY BREWING CO. THE LEGENDARY BOONEVILLE BEER (LOGO) (2 VAR (A) BRASS FINISH (B) SILVER FINISH)

G-55

CAP LIFTER

MARKED "MADE IN CHINA"
3 5/8"

BEN HOFFMAN

2000 (1)

1. MONTE CARLO PUB & BREWERY MONTE CARLO RESORT & CASINO LAS VEGAS

H-12

OVER THE TOP (OTT) CAP LIFTER/BOTTLE STOPPER
BOTTLE SHAPE

MARKED "???" OPENER & STOPPER"
"OCT.31 ???? MILWAUKEE WIS."
3 1/4"

CHRIS QUIMBY

2000 (1)

1. SALEM BREWING ASSOCIATION (LOGO) SALEM BEER

M-120

HOOK CAP LIFTER (SEE M-19)
5"

JOHN STANLEY

2000 (1)

1. DRINK JAX BEER

M-121

CAP LIFTER

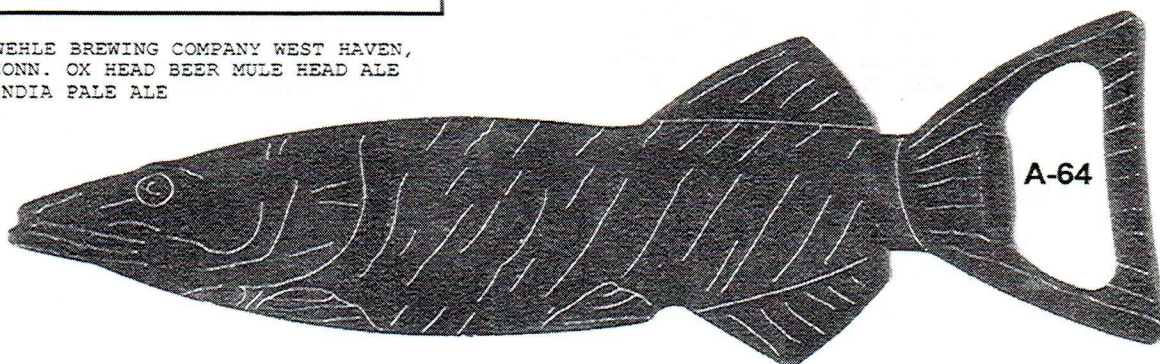
OPENER AND HANDLE ONE PIECE
(SEE M-119)

MADE IN CHINA
5"

OLLIE HIBBELEL/ART SANTEN/JOHN STANLEY

2000 (1)

1. BUDWEISER / SAME



1999 New Discoveries to the 1999 Handbook (Continued)

M-122
CAP LIFTER
ENAMELLED PEWTER HANDLE
(SEE M-123)
MARKED "AMERICAN LEGENDS FOUNDRY MADE IN U.S.A."
5"
DON WHELAN

2000 (1)

- BUDWEISER CLASSIC AMERICAN LAGER /
BUDWEISER CLASSIC AMERICAN LAGER
SPECIAL COLLECTOR EDITION 1 OF
10,000

M-123
CAP LIFTER
BOTTLE SHAPE ENAMELLED PEWTER HANDLE
(SEE M-122)
MARKED "AMERICAN LEGENDS FOUNDRY MADE IN U.S.A."
4 5/8"
DON WHELAN

2000 (1)

- BUDWEISER KING OF BEERS SPECIAL (EAGLE
IN A) BUDWEISER KING OF BEER SPECIAL
(EAGLE IN A) (STANDARD BUDWEISER
LABEL) / BUDWEISER KING OF BEERS
SPECIAL (EAGLE IN A) BUDWEISER KING
OF BEER SPECIAL (EAGLE IN A)
(STANDARD BUDWEISER LABEL) SPECIAL
COLLECTOR EDITION 1 OF 10,000

M-124
POCKET SURVIVAL TOOL
CAN-BOTTLE OPENER BLADE/
PHILLIPS SCREWDRIVER/SCREWDRIVER BLADE/
NEEDLENOSE PLIERS/SAW-FILE BLADE/KNIFE BLADE
(SEE M-110,126)
MARKED "MADE IN CHINA"
5 3/4"
MARC BENJAMIN

2000 (1)

- MILLER MGD

M-125
CAP LIFTER/CAN PIERCER
STAINLESS STEEL TABLEWARE
MARKED "STEGOR STAINLESS"
(SEE M-75)
5"
JOHN BITTERMAN

2000 (1)

- PETER HAND (AND LETTER P)

M-126
BUCKTOOL POCKET SURVIVAL TOOL
CAN-BOTTLE OPENER BLADE/
TWO PHILLIPS SCREWDRIVERS/
THREE SLOTTED SCREWDRIVER BLADES/
NEEDLENOSE PLIERS/SAW BLADE/KNIFE BLADE
(SEE M-110,124)
5 3/8"
ART SANTEN/DON WHELAN

2000 (1)

- BUDWEISER

M-127
OVER-THE-TOP CAP LIFTER
MADE OF ASH
6 1/8"
JACK WESTALL

2000 (1)

- SARANAC

N-96
MASTER BLADE KNIFE/CAP LIFTER BLADE
CELLULOID HANDLES
MASTER BLADE MARKED
"CATARAUGUS CUTLERY CO. LITTLE VALLEY, N.Y."
CAP LIFTER BLADE MARKED "PATENT APPLIED FOR"
3"
JOHN STANLEY

2000 (1)

- FEHR'S BEER / D.H. HARRIS

N-97
"ESCAPE TOOL"/CAP LIFTER BLADE
ADJUSTABLE WRENCH/SCISSORS BLADE
KNIFE BLADE/PHILLIPS HEAD SCREWDRIVER BLADE
5 1/4"
ART SANTEN

2000 (1)

- ALCATRAZ BREWING CO.

P-148
THREE BLADE KNIFE/CORKSCREW/CIGAR CUTTER/
WIRE BREAKER-FOIL CUTTER BLADE/
MASTER BLADE/PEN BLADE/STANHOPE IN BOLSTER
MOTHER OF PEARL HANDLES
MASTER BLADE MARKED "SCHMACHBERG BROS. GERMANY"
DON BULL

2000 (1)

- LION BREWERY CINCINNATI, O.

P-149
THREE BLADE KNIFE/CORKSCREW/
WIRE BREAKER-FOIL CUTTER BLADE/
MASTER BLADE/PEN BLADE/STANHOPE IN BOLSTER
BONE HANDLES
MASTER BLADE MARKED "???"
ART JOHNSON JR/JOHN STANLEY

2000 (1)

- BERGNER & ENGEL BREW. CO. / TANNHAUSER
EXPORT BEER

P-150
CONVERSE CORKPULLER
MARKED "PATENTED MAY 9TH 99"
DESIGNED BY MASCHIL D. CONVERSE
MECHANICAL PATENT NO. 624,457 (05/09/1899)
DON BULL

2000 (1)

- HOLIHAN BROS. WHOLESALERS TO THE PEOPLE
LAWRENCE, MASS.

1999 New Discoveries to the 1999 Handbook (Continued)

P-151
THREE BLADE KNIFE/CORKSCREW/CIGAR CUTTER/
WIRE BREAKER-FOIL CUTTER BLADE/
MASTER BLADE/PEN BLADE
METAL HANDLES
MASTER BLADE MARKED "???"
JOHN STANLEY

2000 (1)

1. COMP. OF C. HEURICH'S BREWERY /
(BACKSIDE ILLEGIBLE)

P-152
CORKSCREW/CAP LIFTER
CORKSCREW IN KEY SHAPE METAL SLEEVE
PETE NOWICKI/DON WHELAN

2000 (1)

1. GREETINGS MANKATO BOTTLING CO. BOTTLERS
OF KEY CITY BEVERAGES HAMM'S BEER

P-153
CORKSCREW IN SEVEN BLADE SWISS ARMY KNIFE
TWO CAP LIFTER BLADES/SCISSORS BLADE/PUNCH BLADE
MASTER BLADE/PEN BLADE/BUTTON HOOK BLADE
(SEE P-104, P-113)
MASTER BLADE MARKED "???" STAINLESS ???"
ART SANTEN

2000 (1)

1. BUDWEISER

R-27
REFRIGERATOR BANK
MADE OF METAL AND PLASTIC
CAP LIFTER IN BOTTOM CASE OF BEER
PLAYS BUD THEME SONG WHEN DOOR OPENED
7"
ART SANTEN

2000 (1)

1. BUDWEISER (IN BOWTIE) COLD BEER TO GO

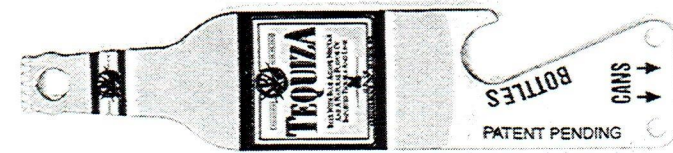
R-28
GOLF BAG
MADE OF PEWTER AND BRASS
4 1/2"
ART SANTEN

2000 (1)

1. MICHELOB CHAMPIONSHIP AT KINGSMILL (ON
BRASS INSERT) / SAME



A-65



R-29
HEX WRENCH
MADE OF STEEL
TWO CAP LIFTERS
4 1/2"
OLLIE HIBBELER

2000 (1)

1. MILLER TIME TM / SAME

R-30
CAR
MADE OF PLASTIC WITH STEEL CHASSIS
CALLED "3 IN 1 BOTTLE & CAN OPENER"
TWIST OFF CAP LIFTER/
POP OFF CAP LIFTER/
POP OPEN CAN OPENER
MARKED "MADE IN CHINA
U.S.A. AND INTERNATIONAL PATENTS APPLIED FOR"
4 1/2"
JOHN STANLEY/ART SANTEN

2000 (1-2)

1. BUDWEISER BUDWEISER BUD KING OF BEERS
(#25 THREE TIMES AND TIRES MARKED
GOODYEAR EAGLE)
2. MILLER LITE MILLER LITE MILLER LITE (#2
THREE TIMES AND TIRES MARKED
GOODYEAR EAGLE) (2 VAR (A) FLEETWOOD
#1 IN RECREATIONAL VEHICLES (B)
FLEETWOOD RVS)

R-31
CAR
MADE OF PLASTIC
STEEL LIP CAP LIFTER
MARKED "CHINA"
2 3/8"
DON WHELAN

2000 (1)

1. BUD

R-32
BOWLING PIN
MADE OF PLASTIC WITH METAL INSERT CAP LIFTER
2"
ART SANTEN

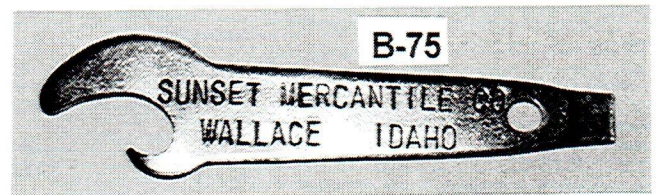
2000 (1-2)

1. BUD LIGHT
2. BUDWEISER

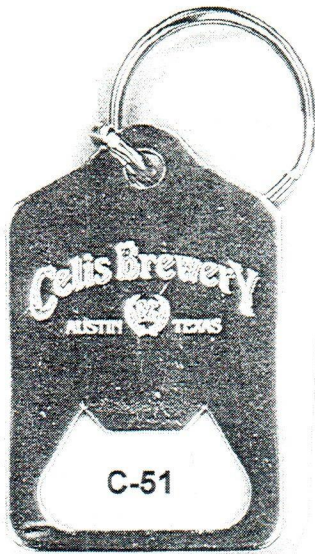
X-11
1999 JFO CONVENTION OPENER
STATE OF FLORIDA SHAPE CAP LIFTER
MADE BY CYMBA INC.
5 5/8"
ART JOHNSON/BOB MCNARY

2000 (1)

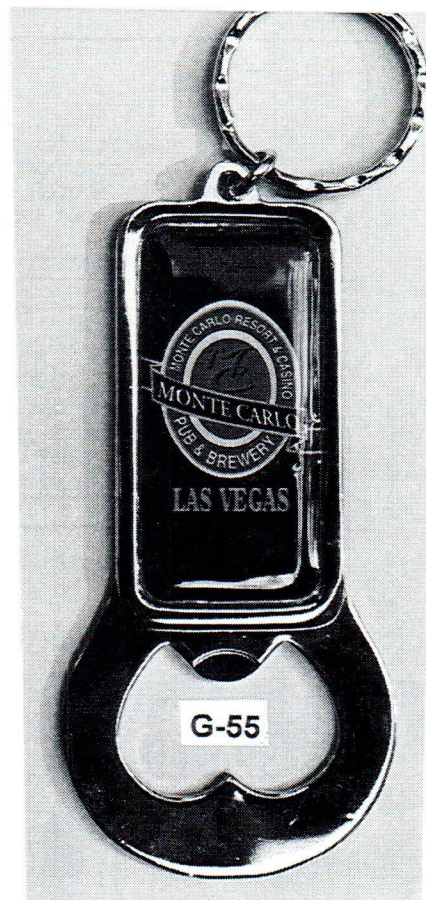
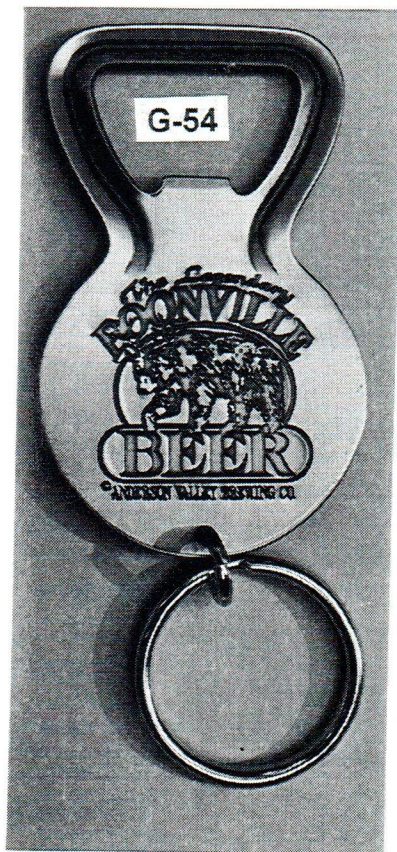
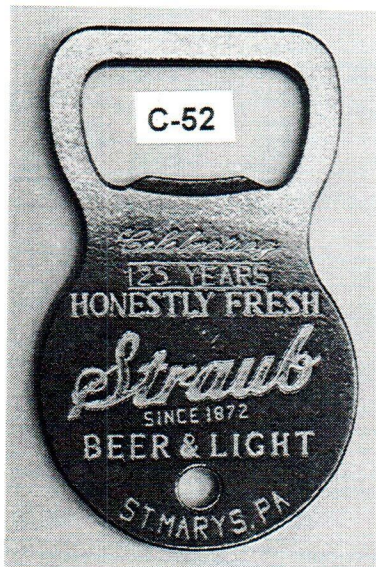
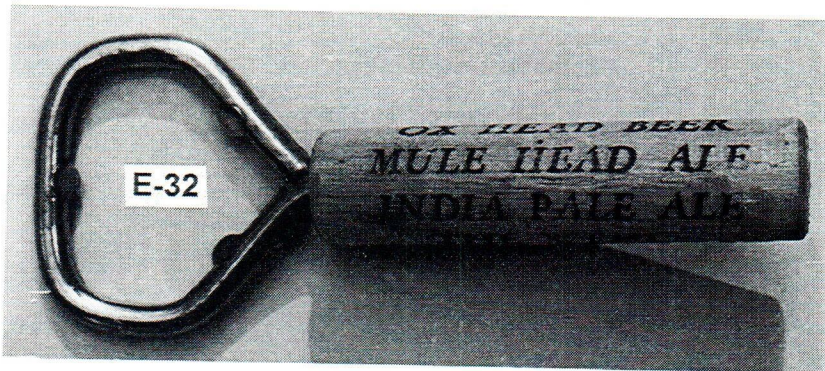
1. JUST FOR OPENERS 21ST CONVENTION APRIL
1999 NAPLES, FLORIDA DRINK JOCKEY
CLUB BEER (NUMBERED 1 TO 100 OF 100
CYMBA, INC.)



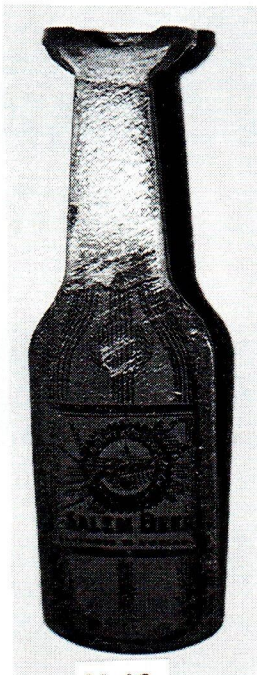
1999 New Discoveries to the 1999 Handbook (Continued)



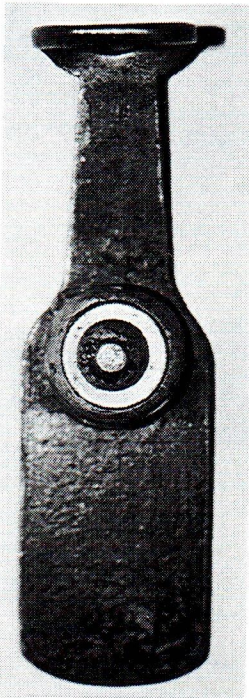
D-25



1999 New Discoveries to the 1999 Handbook (Continued)



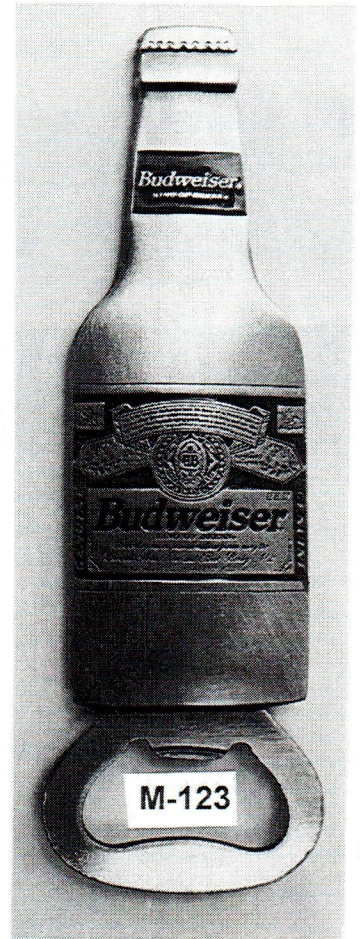
H-12



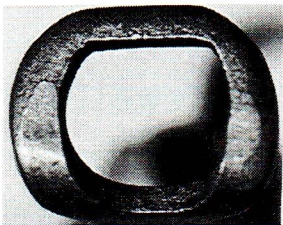
H-12 Back



M-120



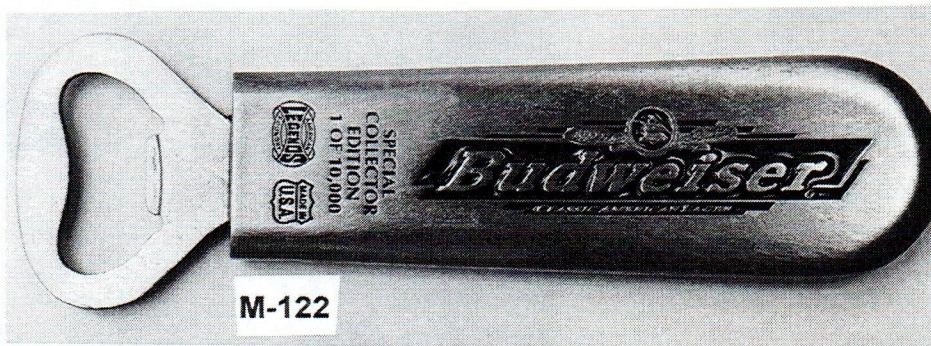
M-123



H-12 Top



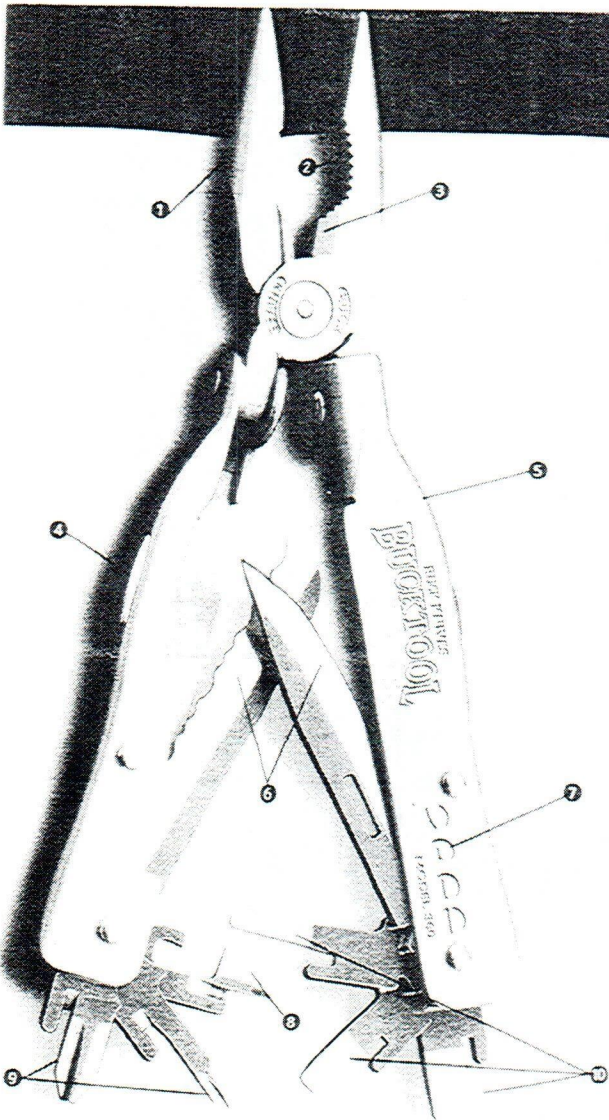
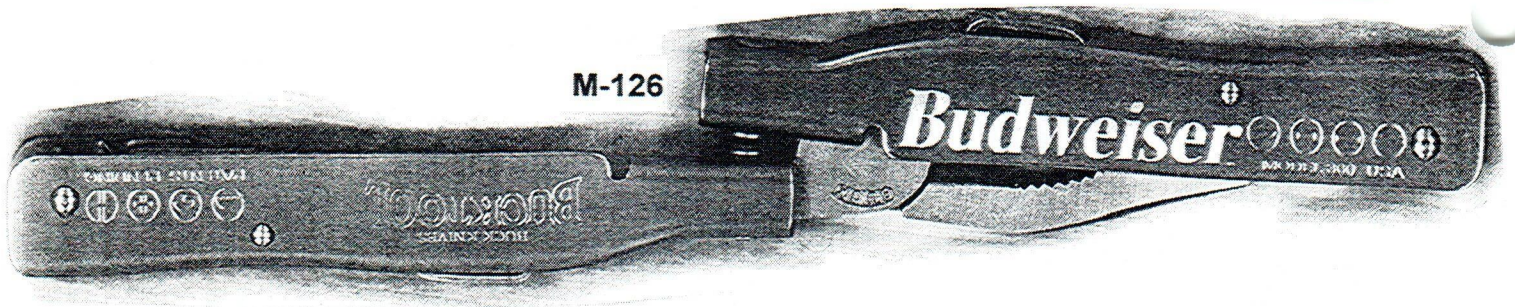
M-121



M-122

1999 New Discoveries to the 1999 Handbook (Continued)

M-126

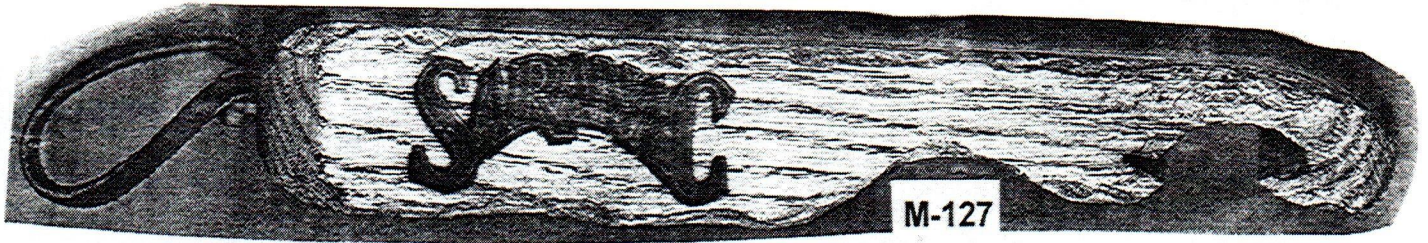


Using Your Bucktool.
Utilisation de votre Bucktool.
Usando su Bucktool.

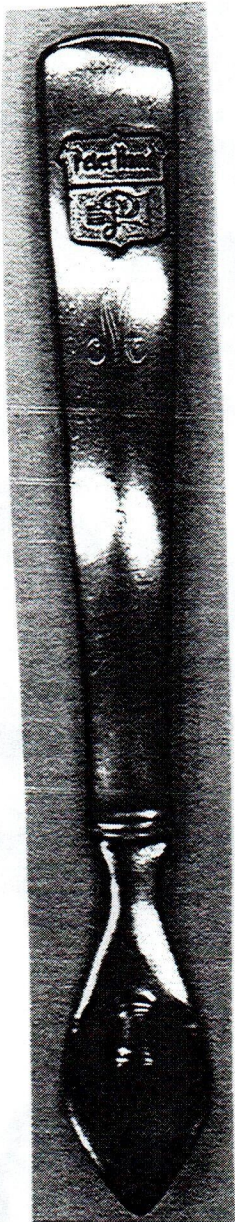
- | | | | |
|----|--|--|---|
| 1 | 11. needle nose pliers | Grandes pinces à pointe d'aiguille | Pinzas grandes con punta de aguja |
| 2 | Gripping teeth fit a variety of standard nut sizes | Partie dentelée s'adaptant à une grande variété d'écrous | Los dientes de sierra se ajustan a varias medidas comunes de tuercas |
| 3 | Wide wire cutter | Coupeur de gros câbles | Cortador de cable ancho |
| 4 | Locking release button | Bouton de verrouillage | Palanca de seguro |
| 5 | Smooth contoured handles | Manches courbés | Mango de curvas suaves |
| 6 | Two blades:
- Drop-point with 1/5 serrated
- Sheepfoot, fully serrated | Deux lames
- à arête au tiers sciee
- à arête complètement sciee | Dos navajas
- Punta caída con 1/5 de sierra
- Completamente serrada |
| 7 | Icons for easy tool ID | Icones pour une identification facile | Signos para la fácil identificación de las herramientas |
| 8 | Can/bottle opener | Ouvre bouteilles et ouvre-boîtes | Abrelatas/destapador |
| 9 | Two Phillips screwdrivers (#1 & #2) | Deux tailles de tournevis en croix (n°1 et n°2) | Dos desatornilladores Phillips (N°1 y N°2) |
| 10 | Three slotted screwdrivers (#4, #6, #8) | Trois tailles de tournevis (n°4, n°6, n°8) | Desatornilladores de tres medidas (N°4, N°6, N°8) |



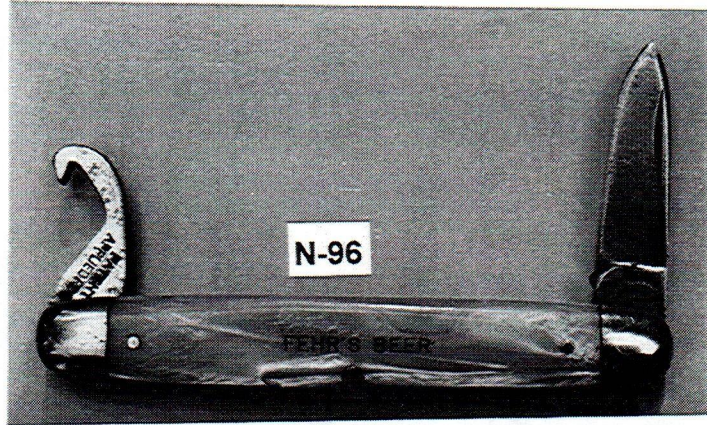
1999 New Discoveries to the 1999 Handbook (Continued)



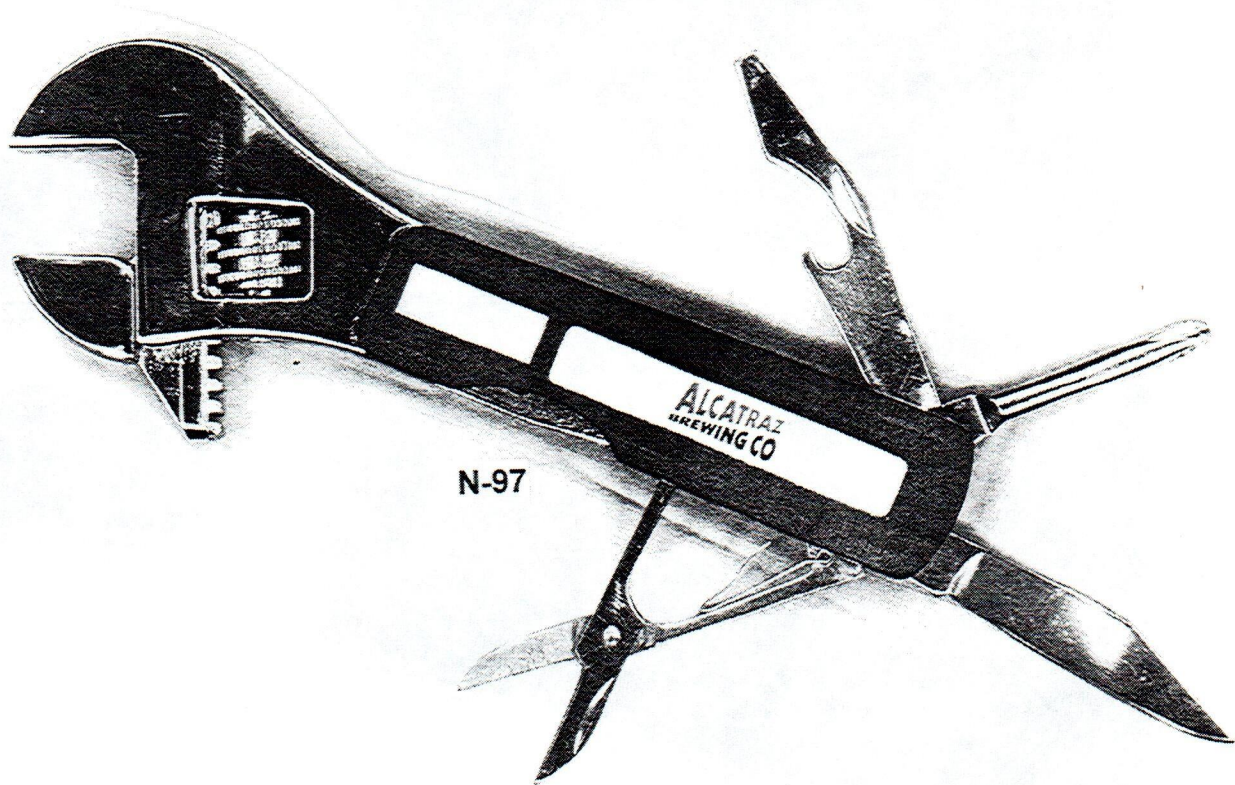
M-127



M-125

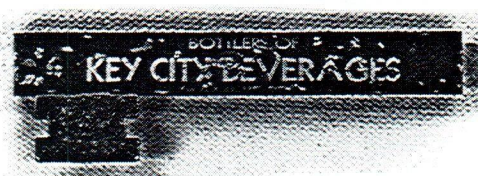
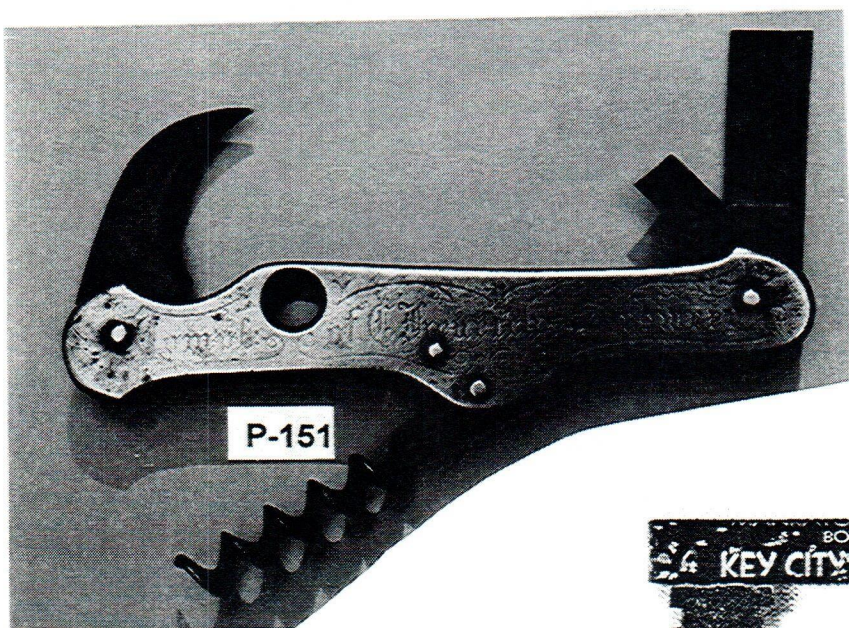
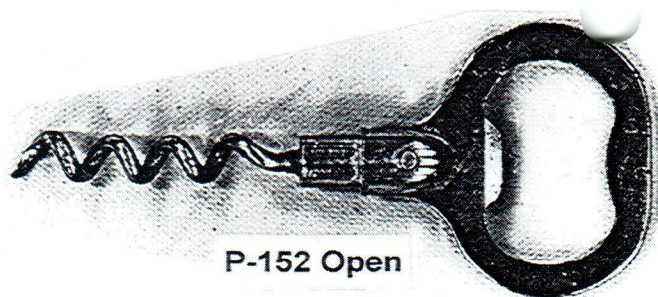
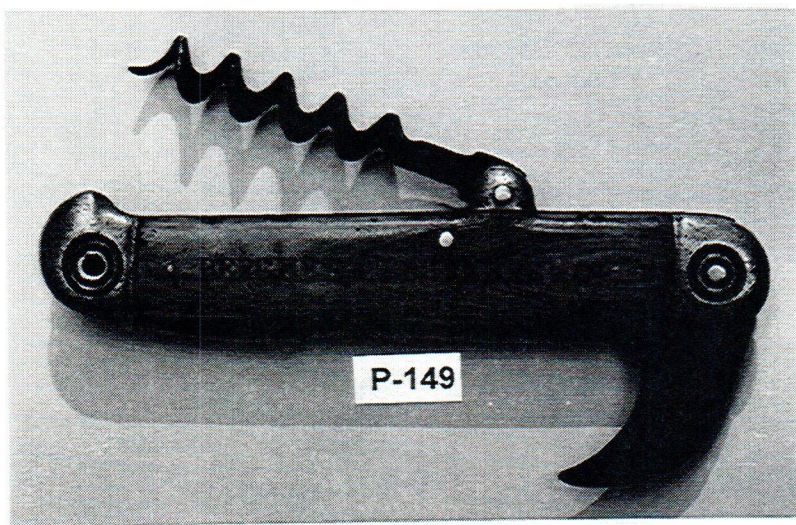
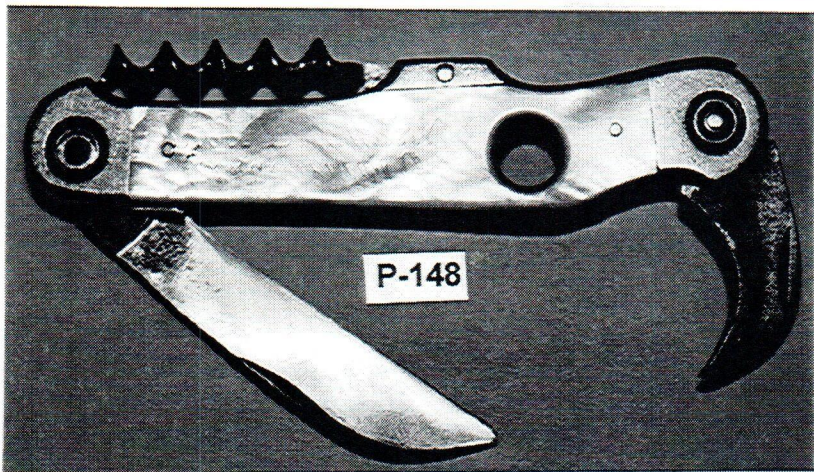


N-96

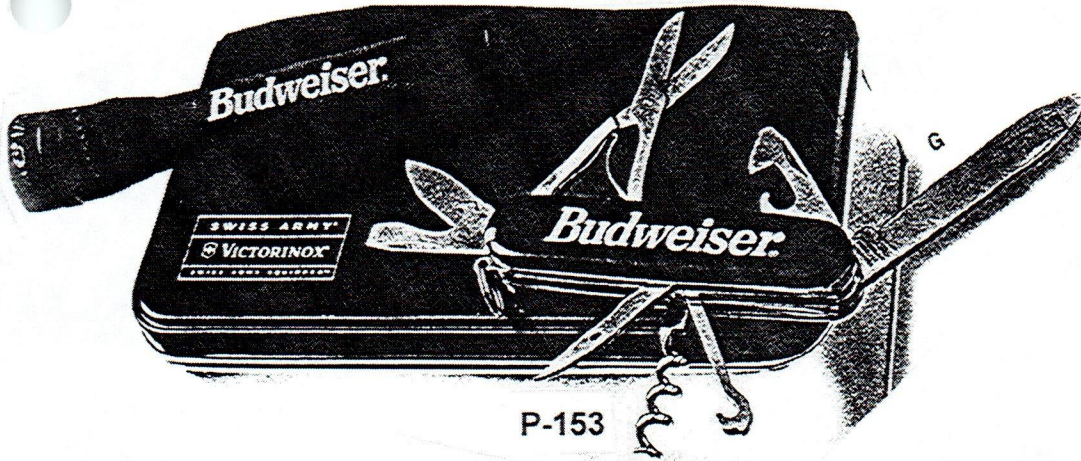


N-97

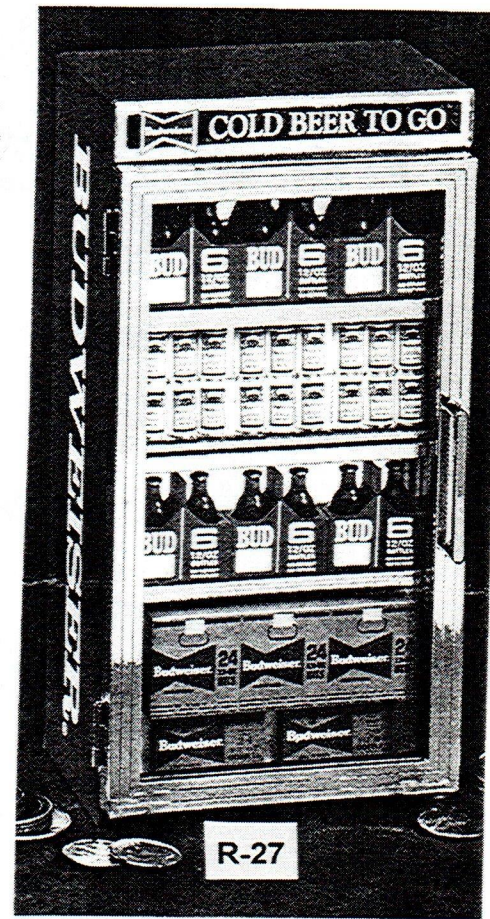
1999 New Discoveries to the 1999 Handbook (Continued)



1999 New Discoveries to the 1999 Handbook (Continued)



P-153



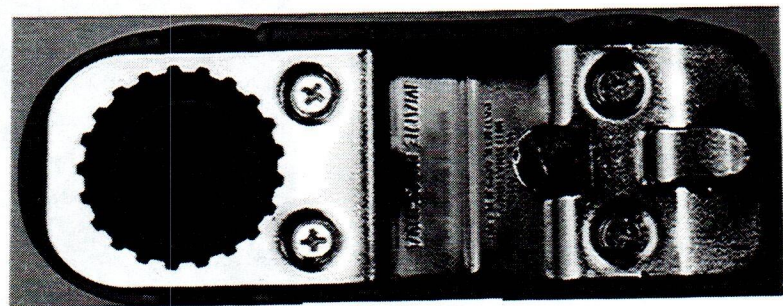
R-27



R-30 Side



R-30 Top



R-30 Bottom



R-28

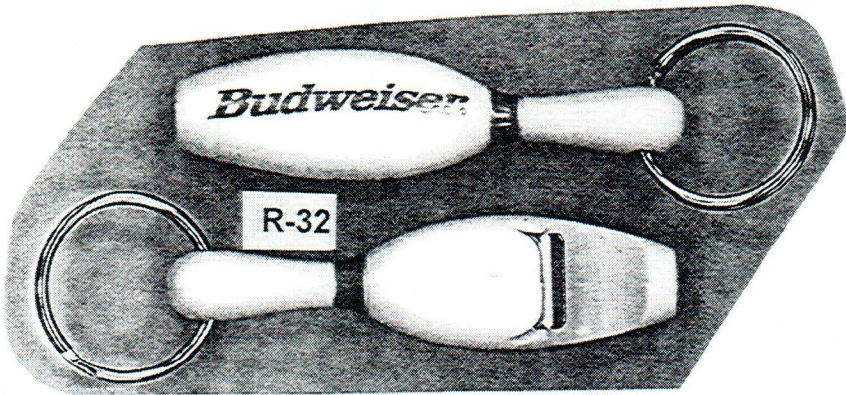
1999 New Discoveries to the 1999 Handbook (Continued)



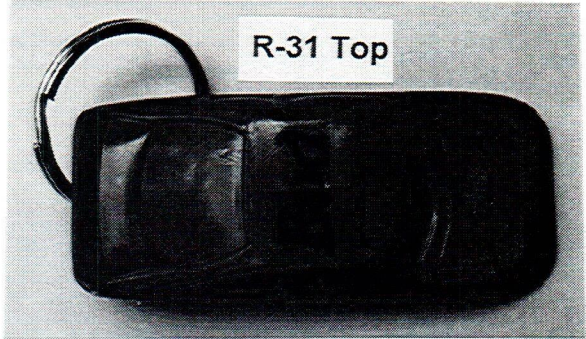
R-29



R-31 Side



R-32

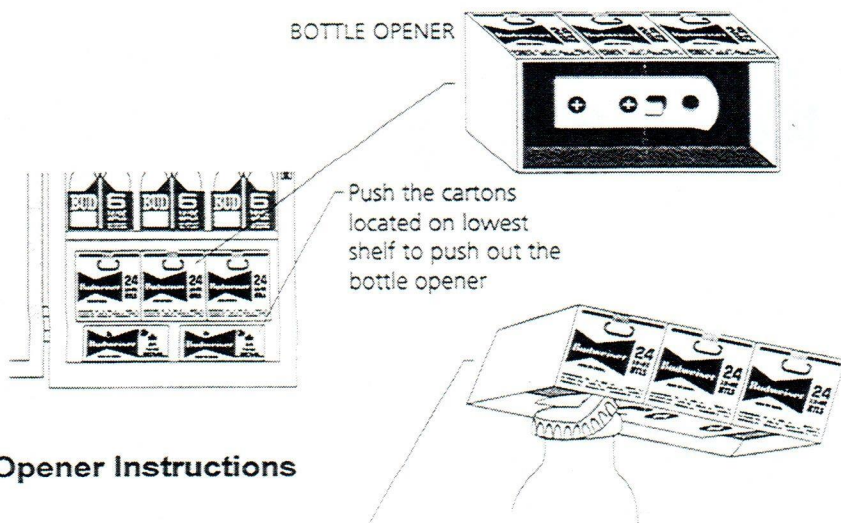


R-31 Top

HOW TO RETRIEVE THE BOTTLE OPENER

Push the cartons located on the lowest shelf to push out the die cast bottle opener.

Use the die cast bottle opener to remove bottle caps.



R-27 Opener Instructions



X-11

AUCTION NEWS

Lynn Geyer's "Advertising Auctions". Main emphasis is on Breweriana (some openers). Cost is \$25.00. Advertising Auctions, 300 Trail Ridge, Silver City NM 88061 (505) 538-2341

Fink's Off The Wall Auctions. Main emphasis is on Breweriana (some openers). The cost is \$25.00. Finks Off The Wall Auctions, 108 E. 7th St., Lansdale PA 19446 (215) 855-9732

JFO and OTHER CLUBS (Newsletter Name in Italics & All Clubs Offer an Annual Convention)

American Breweriana Association (ABA): *American Breweriana Journal* (bi-monthly) on breweriana collecting. Dues \$25.00/year. Chris Galloway, Recording Secretary, P.O. Box 11157, Pueblo CO 81001

Canadian Brewerianist: *The Canadian Brewerianist* (bi-monthly) on Canadian Breweriana collecting. Dues \$12.00/year (US Funds). Loren Newman, 2978 Lakeview Trail, Bright's Grove, Ontario, CANADA, N0N 1C0

Canadian Corkscrew Collectors Club (CCCC): *The Quarterly Worme* (quarterly) on corkscrew collecting. Dues \$30.00/year. Milt Becker, PO Box 9863, Englewood NJ 07631

The Cola Club: *Vintage Soda* (bi-monthly) on all areas of antique soda advertising. Dues \$35.00/US/year, \$45/Canada/year, \$55/Foreign/year. The Cola Club, PO Box 293158, Nashville, TN 37229

East Coast Breweriana Association (ECBA): *The Keg* (quarterly) on breweriana collecting. Dues \$20.00/year. John Stanley, PO Box 64, Chapel Hill NC 27514

MICROBES (Micro Chapter ECBA/NABA): *The Micro Connection* (quarterly) on micro breweriana. Dues \$8.00/year. Roger Levesque, PO Box 826, South Windsor CT 06074

Figural Bottle Opener Club (FBOC): *The Opener* (quarterly) on cast iron openers. Color guide book: \$27.95/Non Members or \$17.00/Members. Dues \$20.00/year. Linda Fitzsimmons, 9697 Gwynn Park Dr, Ellicott City, MD, 21042

JUST FOR OPENERS (JFO): *Just For Openers* (quarterly) on all areas of opener collecting (with auction each issue). Dues \$20.00/year. John Stanley, PO Box 64, Chapel Hill NC 27514-0064

National Association Breweriana Advertising (NABA): *The Breweriana Collector* (quarterly) on breweriana collecting. Dues \$20.00/year. Robert Jaeger, 1380 W Wisconsin Ave Apt 232, Oconomowoc WI 53066

SHOWS & CONVENTIONS (Sources For Openers and Corkscrews)

1999 Oct 7-9 – 17th Annual Midwest Breweriana Show – Holiday Inn Central-Omaha NE– JFO Members welcomed. Contact Heather Hain, 15447 Allan Dr, Omaha NE 68137, (402) 896-9917

2000 Feb 12-15 – 21th Annual Blue & Gray Breweriana Show – Holiday Inn Holidrome-Fredricksburg VA – All JFO Members Welcomed. Contact: John Fisher, PO Box 153, Benedict MD 20612-0153, (301) 274-3340

2000 Feb 28th – 10th Annual Mid-Missouri Mega Meet at Holiday Inn Columbia, MO. 140+ Tables of Breweriana (Saturday Only Show). Contact Bruce Mobley, PO Box 163, Macon MO 63552-0163, (660) 385-6256

2000 Apr 26-30 – 22nd Annual Just For Openers Convention – Hyatt-Lisle IL– All Opener / Corkscrew / Breweriana Collectors Welcomed. Contact: Norm Jay, 839 James Ct, Wheaton, IL 60187-6344, (630) 690-1565

2000 Jun 13-18 – 19th Annual ABA Convention – New Orleans LA – ABA Members Only Only (Saturday Show is Public). Contact Stan Galloway, Executive Director, P.O. Box 11157, Pueblo CO 81001

2000 Jul 11-16 – 28th Annual ECBA Convention – Doubletree-Somerset NJ – ECBA Members Only (Saturday Show is Public). Contact John Stanley, PO Box 64, Chapel Hill NC 27514-0064, (919) 419-1546

2000 Aug 2-6 – 29th Annual NABA Convention – Holiday Inn Select-Naperville IL – NABA Members Only (Saturday Show is Public). Contact Robert Jaeger, 1380 W Wisconsin Ave Apt 232, Oconomowoc WI 53066

2000 Sep ?? – 5th Annual K.C. Antique Bottle Collectors Show (along with K.C. Flea Market). Sunday Show . Contact H. James Maxwell, 1050 W Blue Ridge Blvd, Kansas City MO 64145, (816) 942-0291 hjmesq@aol.com

WANTED (Please remember there is no charge for Ads)
--

Adler Brau Openers in Good Condition: H-7-1, H-11-1, I-20-1, M-30-4 & N-83-1. Also looking for other H-7 & H-11 Opener. Russ Adler, W11307 Hwy V, Lodi WI 53555, (608) 592-5766, E-Mail adler@chorus.net

Members to Swap Openers for Openers, Trade List for Trade List. People who are starting out like myself who want to build their collections from other members in different parts of the country. Write or Call Scott Sherman, W5268 Quarry Rd Appleton WI 54915, (414) 954-1168

Golden Glow Openers: A-1-9, B-23-149, E-14-787, O-4-22 & A-12-12 Grace Bros. Also any Breweriana from Rainier Brewing Co (Seattle WA, LA CA, SF CA), Golden West Brewing Co of Oakland, CA & Port Townsend Brewing Co. of Port Townsend, WA. Buy or Trade. John Cartwright, 17 Flag Way, Paso Robles CA 93446, (805) 226-9270

Please Help Me Upgrade My Collection. How? Will trade my poor condition A-9-15 Excelsior, A-9-32 Fried and A-9-33 Rainier for your good or better ones----and \$\$\$C-A-S-H\$\$\$. Ed Kaye, 7077 Cedarhurst Dr, Fort Myers FL 33919, Call Collect (941) 590-3068

Any:A-34 (Beer or Non-Beer), Beer:A-42,B-6,B-7,B-22,B-29-4,B-31,G-5. Soda Openers (Esp Dr Pepper, Coca-Cola, Nehi, Pepsi-Cola). B-9-2 Salinas & B-9-5 Mineral Springs. C-21-3 Old Timers, C-21-6 Grand Rapids, E-17s:#1 American,#7 I.S.D. Sioux City,#9 Everett,#12 Lion. H-1s:#8,9,12,21,23,24,26,27,31,34,35,39,42,44. O-1: 1,2,3,5. Write for latest trade list. John Stanley, PO Box 64, Chapel Hill NC 27514-0064, (919) 419-1546

A-22-1 Ballantine. Great Trades Available. Jack Ford, 5351 Boyd Ave, Oakland CA 94618, (510) 655-5393

A-17 "Wilber Brewery" & P-8 Corkscrew "Omaha Brewing Association" (Excellent Condition Only). Will purchase outright. John Mlady, 1506 S 25th St, Omaha NE 68105-2611, (402) 345-7909

A-43-Dixie Beer & N-15 Bud Knife. Want to buy straight out. Marc Benjamin, 167 Nixon Beach Rd, Edenton NC 27932, (919) 482-2099

B-45, B-66, I-7, P-72, P-100, R-14 types with a Corkscrew (Beer/Non-Beer) and Silver Top Beer Openers. Herb Danziger, 550 Cherry Ct, Birmingham MI 48009-1459, (810) 646-9470

Beverwyck-B-18-499,B-21-147,C-10-48,E-9-87,F-6-87,I-2-2,I-14-1,J-5-5a, Dobler-I-11-232,I-18-6, Fitzgerald-C-20-12,I-12-23,I-18-9, Hedrick-E-9-55, Hinckel-P-30-1, Quandt-P-8-118,P-35-2, Stanton-A-20-13,C-12-103,C-18-24, Isengart-E-8-59, Stoll-B-18-380,E-8-107, Misc-A-28-40. Want to Buy. Bill Laraway, 627 Kenwood Ave, Delmar NY 12054, (518) 439-2739

Bond and Lillard Openers (would like to buy). Have A-29, would like any others. Lillard is a family name. George Love, 4301 Forest Plaza Dr, Hixson TN 37343, (423) 877-6006

"E"s! Have Trade List (various types) to send for "E"s that I need or will buy. Larry Moter, 10149 Michaels Rd, Woodford VA 22580, (804) 448-3928

E-2-19 Yuengling Por-Tor (Will trade heavy for this opener or pay cash). Harold Queen, 1001 Centre Ave, Jim Thorpe PA 18229, (717) 325-2612

"E" Type Openers Wanted. Will Trade my "C", "E" and "I" Types. Please send list of what you have and I'll send my list. Ralph Tewksbury, 84 Wildwood Dr, Parkersburg WV 26101 (304) 863-3627

Wanted I-4s # 31 Acme, 33 Becker, 5 & 61 Burgermeister, 57 GB, 39 Lion, 54 Piels Schlitz, 42 Pilsner, 59 Silver Fox. Cash or trade. Ben Hoffman, 213 Simmons Rd, Perkiomenville PA 18704, (610) 287-8243

"I-5"s (E-11 Collection Complete). Send for Want List. John Patton, 9224 Sugarloaf Dr, Redding CA 96001

Will Trade O-9 Fredricks Bros. Brew for I-7-79 Fredricks Bros & one of the following: I-7-82 Balboa, I-7-46 Berghoff, I-7-64 Edel Brau, I-7-84 Lion, I-7-37 Schaefer, E-11-18 Arrow or E-11-9 Lone Star. Tom Gormally, 100 Nelson Pl, Westfield NJ 07090, (908) 233-8867

I-7 Beer or Non-Beer Openers. I'm interested. Extensive trade list or cash. Hale Milano, 506 Springhouse Road, Camp Hill PA 17011-1454, (717) 737-5067

L-1-8 Manns. Have some traders. Harry Horn, 3113 Smoky Ct, Sacramento CA 95826, (916) 362-3590

WANTED (Continued) (Please remember there is no charge for Ads)

M-3s #40,23,24,25,41,26,39,33,36,34,42,37,6,43 Non-Beer M-3s #2,5,6,7,8,9,13,14,16,17,19,20,21,22,23,25
Vic Keown, 10547 Mert Ave, Saint Ann MO 63074, (314) 428-6343

O-5 Openers/Send for list-Buy/Trade.Top \$\$\$. Steve Owen,1175 Elkins Lake, Huntsville TX 77340 (409)295-3329

P-19-10 Kalispell, P-18-3 Washoe, P-31-6 Eureka, Purchase or Trade. Have P-19-2 Townsend, M-73 Highlander Sliders (Red), and many other P's for trade. Bill Pattie, 37050 SE 89th St., Snoqualmie WA 98065, (206) 888-2496

Cigar Box Openers: SHM-2,8,10,11,13,14 DHM-13,14,15,16 RBO-3,9,12 HOR-2,3 RND-6,8,9,10 SQR-1,4 NL-6 BB-1,6,19 BUT-2,4 PKT-1,5,6,8,9,10 SEP-2,6,7,8,9 MIS-4,6,7,10,11. Will purchase or trade from 600+ collection. (Types from the Cigar Box Opener Handbook copies available from Mike for \$3.00 which includes mailing) Mike Schwimmer, 325 E. Blodgett Ave., Lake Bluff IL 60044-2112, (847) 295-1901

Looking for "E" & "I" & Other Beer Openers to rebuild my collection. Will buy or trade beer openers, cigar box openers, non-beer openers. Send for my list of "oddities".
Glen Enloe, 805 Tepee Dr, Independence MO 64056, (816) 796-9965

Hartford, Connecticut Openers Wanted esp. E-8-61 Fischer & P-17-4 Columbia.
Edward Johnson, 1290 Poquonock Ave, Windsor CT 06095, (860) 688-6795

Corkscrews-Cork Pullers-Syroco (especially Golden Knight and Clown)-Early US Patents-Anything Unusual. Pay competitive price in trade or cash. Have many corkscrews to trade. Please send description, sketch, photocopy, etc to Paul Luchsinger, 1126 Wishart Place, Hermitage PA 16148 (Tel/Fax 724-346-2331)

Corkscrews and Tin Can Openers: Have Beer Openers for Trade.
Joe Young, 36 S. Weston Ave., Elgin IL (847) 695-0108

Corkscrews, Beer Advertising Letter Openers, Beer Advertising Knives, & Postcards depicting Corkscrews. Please send description, photo, sketch, photocopy, or tracing of what you have and advise price wanted.
Don Bull, PO Box 596, Wirtz VA 24184, (540) 721-1128

Corkscrews: Esp. Figural, Syroco, Thomason, Bakelite; also Wine Ephemera (Ads, Postcards, Labels, Grape Box Labels, Etc.); and Bakelite Anything. Buy Straight Out.
Abby Nash, 172 Bush Lane, Ithaca NY 14850, (607) 266-0690

Corkscrews: Esp. Walker's "Waiters & Hallboys" and old Williamson wire shafted "T"s with attachments to wood handle (such as brushes/wire cutters). John Vlossak, 1044 East Eldorado St., Appleton WI 54911, (414) 739-2789

From the Enterprise Brewing Co of Fall River, MA: A-20-47, B-18-26, B-21-430, C-12-135, E-13-35, E-14-526, E-14-779, I-11-13, J-1-1, and N-22-1. Dave Dubrul, 88 Linden Terrace, Burlington VT 05401, (802) 864-2089

"F" Type Beer Advertising Openers, Beer Advertising Letter Openers, Beer Advertising Match Safes and Beer Advertising Knives (with or without openers on them). Larry Biehl, 448 Crandon, Calumet City IL 60409

Idaho & Montana Beer Openers esp. from Kessler Brew Co of Helena,MT & Sunset Brew Co of Wallace,ID. Newer collector looking to expand collection. Steve Armstrong, PO Box 1938, Orofino ID 83544, (208) 476-0128

Openers from Jamestown Brewing Co, Kuhn's Beer, Chautauqua Brew, Monessen, PA, Independent Brewing Co, Schaefer, & all Cleveland Beers. Ed Schaefer, 366 Bassett Rd., Bay Village OH 44140, (216) 871-0449

Kitchen Knife with Opener in the Blade and with a Double Wire Handle. Also Kitchen items to Open Jars with Bottle Opener in Handle (flat piece). Bonnie Teggatz, 437 G Ave NW, Cedar Rapids IA 52405

Lansford, PA Advertising Items: Openers, Spoons, Blob Bottles, Labels, Etc. Cash or Trade. Tony Zanghi, 2225 Deer Trail Rd, Coopersburg PA 18036-9069, (610) 346-8232, e-mail anthony.zanghi@conrail.com

Lexington Brewery (Dixie Beer) & Coca-Cola Openers. Want to buy any figurals or unusual older examples of these. Also looking for old manufacturer's brochures or catalogs (originals or copies of).
Thom Thompson, 123 Shaw Ave., Versailles KY 40383, (606) 873-8787

WANTED (Continued) (Please remember there is no charge for Ads)

"M-1 & M-2" Lithographed Openers (Excellent Condition Only) by beginning collector. Also Openers or Other Related Items to any Jung Breweries. Paul Jung, PO Box 425, Bechtelsville PA 19505, (610) 367-0239

Minnesota Openers: Any St. Cloud, Red Wing or Rochester MN. Also A-30-7 Premier, B-24-77 Fitgers, L-4-27 Schmidt, L-4-67 Schmidt, M-2-15 Rex (Fitgers), N-8-1 Schuster, N-43-2 Bub, N-74-1 Hamms.
Pat Stambaugh, 718 S Lakeshore Dr, Lake City MN 55401

New York State Openers: E-4-4 American, E-4-345 Koch, E-14-312 Amsterdam, G-1-67 Hupfel.
Will Buy or Trade. Mark Barren, 6141 Tachi Dr., Newfane NY 14108-9517, (716) 778-9724

Orange Crush Openers Wanted: Will Buy or Trade if I have anything you may need. Thanks.
Paul Gauvin, 24 Strawberry Ln, Manchester CT 06040, (860) 646-9722, E-Mail mtkneo@aol.com

P-1-2 Anheuser-Busch Corkscrew & \$55 for P-1-10 Highland or P-1-15 Schnaiders or P-1-16 Schoenhofen or P-88-2 Burton or P-88-3 National or P-88-4 Yonkers. Ollie Hibbeler, 298 Highline Road, Lake Ozark MO 65049

Help!!! need only 10 of 45 known Spokane, Washington Openers to complete collection: B-6-9 Spokane, B-13-61 Bohemian Club, B-14-109 Spokane, E-3-58 Bohemian Club, E-6-137 Golden Age, E-7-6 Gilt Top, E-14-475 Bohemian Club, N-44-1 Inland & P-19-16 New York. Will trade heavy or pay your price.
Nick Johnson, 4708 Spiser Ln, Wichita Falls TX 76302, (940) 322-1696

TYPES (Beer) A-11,22,33,36,37,39,40,42,48,49,50,51,53,54,55,56 B-9,26,28,34,37,41,43,44,45,46,48,50,51,61,66, 67,68 C-40,44 D-7,8,10,11,13,14,16 E-26,27 F-11,16,26 G-3,11,19,33,35 H-9 M-14,22,48,49,50,61,64,65,66,67, 68,69,70,71,72,75,76,78,79,80,84,85,86,87,88,89,90,91,92,93,94,95,96,97 N-1,7,15,16,18,19,21,28,45,46,55,57,70 O-6,12,13 P-11,12,21,30,65,67 R-6,8,10. Gary Deachman, PO Box 438, North Woodstock NH 03262

WASHINGTON D.C. Openers and/or Corkscrews. Also figural corkscrews.
Sandra Emme, PO Box 1454, Upper Marlboro MD 20773, (301) 627-8207

West Virginia Openers (B-7-12, B-18-110, and H-4-3), also Southern US Beer openers and corkscrews.
Roger Jarrell, 1500 Sedwick Rd., Durham NC 27713, (919) 544-7787

Wooden Shoe (Minster, Ohio) and Sebald (Middletown, Ohio) Brewery Items.
Jim Stork, 7504 Parliament Crt, West Chester OH 45069

SELLING (Please remember there is no charge for Ads)

Starr X (Type O-5) Wall Mounts, Selling Warehouse Collection, Send SASE for List,
Clayton Denny, 630 Nottingham Dr, Hampton VA 23669-1618, (757) 851-4258

"I-7" Collection for Sale: Send SASE for List: Darwin Miller, 32 La Canada Way, Hot Springs Village AR 71209

"Openers (Beer and Otherwise), Corkscrews and Figurals For Sale". Send SASE (2 Stamps Business Size).
Carl T. Jantos, 7025 Kevin Drive, Bethel Park PA 15102-3913

Beer and Soda Openers For Sale. Send SASE for List. John Fisher, PO Box 153, Benedict MD 20612-0153

"American Breweries II": by Dale Van Wieren. Over 18,000 entries for nearly 8,000 brewing firms, tracing names, addresses, and dates of operation. (\$18 First Class). John Stanley, PO Box 64, Chapel Hill NC 27514

1999 Handbook of United States Beer Advertising Openers and Corkscrews. \$22 sent priority mail.
1999 Handbook of United States Beer Advertising Openers and Corkscrews (no picture type section) . \$15 sent priority mail. John Stanley, PO Box 64, Chapel Hill NC 27514

"Just For Openers" "A Guide to Beer, Soda, & Other Openers" by Schiffer Publishing, 160 Pages, Over 300 Color Pictures, \$23.95 plus \$3.20 shipping (US Only). Bullworks, PO Box 596, Wirtz VA 24184

Results of July 1999 JFO Auction Closing August 18, 1999

1	A-001-004	CRYSTAL ROCK VAR (B)	25.11
2	A-001-055	STONE MALT	15.50
3	A-002-999	ERNIE'S DANCE HAVEN	11.60
4	A-003-022	MALT K POPP	23.79
5	A-003-036	BELOIT MALT	23.79
6	A-003-999	DIXON BOTTLING	8.50
7	A-004-009	LEISY	30.00
8	A-004-999	COPLAND (CANADIAN)	20.00
9	A-005-045	FOSSCO MALT	12.00
10	A-007-012	MARX MALT	18.00
11	A-009-004	LEISY	45.11
12	A-012-019	REINE	23.79
13	A-012-999	ST FRANCIS GINGER ALE	20.50
14	A-013-999	GRASBERGER AUTO	31.00
15	A-013-999	MOTOR INN	26.00
16	A-015-004	COOKS	12.23
17	A-015-019	FREMONT	18.79
18	A-017-023	LUXUS	32.77
19	A-020-999	MAX KNEBLE BOWLING	10.50
20	A-021-002	BLATZ	12.50
21	A-021-005	DUQUESNE	7.11
22	A-021-010	ZIEGLER	21.10
23	A-021-054	RAHR	21.10
24	A-021-999	BLUE MOON BAR	14.00
25	A-028-999	EDWARD KEEFE WINE	12.00
26	A-029-033	BUTTE BOTTLERS	18.00
27	A-029-041	REINE	20.50
28	A-029-999	MT ZIRCON	12.50
29	A-030-999	AMERICAN WHISKEY	20.00
30	A-035-999	GAY-OLA (BRASS)	41.00
31	A-039-999	BARR LUMBER	2.65
32	A-044-001	CREAM CITY	19.00
33	A-044-003	C SCHMIDT & SONS	37.51
34	A-045-999	BROOKLYN MOTORS	32.23
35	A-053-999	HIGGINSVILLE BOTTLING	66.06
36	A-999-999	FLEERS GUM	13.77
37	B-001-004	GUND	15.00
38	B-002-001	BLATZ (Tie)	20.00
39	B-002-033	OLD STYLE	24.79
40	B-003-004	EDELWEISS	47.77
41	B-004-002	SCHEIDT VAR (A)	20.50
42	B-006-020	FEIGENSPAN	22.11
43	B-006-999	HUDSON & ESSEX CARS	15.00
44	B-013-999	OLD ENGLISH GINGER	11.23
45	B-013-999	OLYMPIC DRY GINGER	11.23
46	B-013-999	O-T	12.23
47	B-013-999	SASERAC GINGER ALE	12.50
48	B-013-999	GOLDEN STATE BEV	11.23
49	B-014-085	GLUEK	3.25
50	B-014-092	GOLDEN GLOW	12.00
51	B-014-999	ESKIMO POP	12.50
52	B-014-999	BOBBY BURNS GINGER	12.50
53	B-014-999	CALGARY	2.65
54	B-015-999	PUR-OX BEV	13.60

55	B-018-324	AMERICAN MAID	31.23
56	B-018-999	BUFFALO ROCK GINGER	10.50
57	B-018-999	GRAVEL SPRINGS WATER	6.00
58	B-019-023	MAIER	12.00
59	B-019-051	JAMESTOWN	24.50
60	B-019-143	WEINHARD	20.50
61	B-021-076	SCHLITZ	10.50
62	B-021-084	TACOMA	13.23
63	B-021-139	TERRE HAUTE	11.23
64	B-021-236	CRESCENT	11.23
65	B-021-311	TIVOLI	15.00
66	B-021-385	READING	13.23
67	B-021-393	CASSVILLE	40.00
68	B-021-406	ROBINSON	21.10
69	B-021-443	GARDEN CITY	28.00
70	B-021-454	DOTTERWEICH	13.23
71	B-021-530	NARRAGANSET T	20.50
72	B-021-999	JERSEY FARM MILK	8.00
73	B-021-999	CHIPPEWA SPRINGS	12.50
74	B-021-999	SARATOGA VICHY	8.00
75	B-021-999	VOGEL SODA	7.23
76	B-022-010	JUNG	8.00
77	B-023-004	BURGERMEISTER	15.00
78	B-024-026	NARRAGANSET T VAR (B)	7.23
79	B-027-001	MILLER VAR (A)	20.00
80	B-029-999	DIETRICH MOTOR CAR	18.00
81	B-033-001	SCHOENHOFEN	25.00
82	B-033-002	HEILEMAN VAR (A)	25.00
83	B-035-006	GOETZ	8.00
84	B-039-999	HOTEL ALLEN	11.55
85	B-042-003	STORZ	18.00
86	B-060-002	EAGLE VAR (B)	38.77
87	B-999-999	NESBITTS	12.50
88	C-001-003	SCHOENHOFEN	46.50
89	C-006-999	CLICQUOT CLUB GINGER	6.23
90	C-009-001	ACME	5.23
91	C-009-028	MILLER (Really C-10)	20.00
92	C-011-004	BLATZ	5.65
93	C-011-027	GENERAL	10.50
94	C-011-999	BIG CHIEF BOTTLING	21.23
95	C-012-003	CAMDEN	6.23
96	C-012-013	HAWAII	27.50
97	C-012-022	R & H	6.23
98	C-012-042	ENTERPRISE	6.23
99	C-012-092	PEERLESS (SPINNER)	3.00
100	C-012-105	TACOMA	20.00
101	C-012-128	RAINIER	13.00
102	C-012-139	MOORE & QUINN	20.00
103	C-012-152	WAGNER	8.00
104	C-013-044	FOX	22.79
105	C-013-066	KRUEGER	3.65
106	C-013-074	NATIONAL	4.00
107	C-013-076	NORTH AMERICAN	5.56
108	C-013-141	KESSLER	11.26
109	C-013-147	RAHR	8.76
110	C-013-189	ROCKFORD	22.79
111	C-013-220	GRACE BROS	20.00
112	C-014-001	BUCKEYE	8.00

113	C-014-005	HORLACHER VAR (A)	4.50
114	C-014-012	RHEINGOLD	4.50
115	C-014-016	RUPPERT	5.23
116	C-014-019	STORZ	4.50
117	C-016-009	SCHAEFER	4.00
118	C-017-006	GRETZ	3.66
119	C-017-012	LEBANON VALLEY	6.23
120	C-017-024	PRIOR	5.50
121	C-020-007	NEUWEILER	7.15
122	C-020-025	ELIZABETH	6.15
123	D-001-007	RUPPERT	13.00
124	D-001-009	STROH	35.00
125	D-001-014	L.A.B.	4.00
126	D-001-039	STROH	35.00
127	D-002-006	SCHLITZ	5.50
128	D-003-022	ROESSLE	40.00
129	D-004-004	OLD KING	20.00
130	D-005-004	COOK	3.15
131	D-006-001	BRUCK	5.50
132	D-009-001	CHIEF OSHKOSH	5.00
133	D-009-004	KINGSBURY	5.26
134	D-009-007	OLD IMPERIAL	5.26
135	D-009-011	ZOLLER	3.56
136	D-009-013	DENMARK	6.50
137	E-001-010	KUEBLER	8.79
138	E-001-012	STEGMAIER	3.66
139	E-001-014	TROMMER	5.00
140	E-001-999	BLACK BEAR BEV	11.23
141	E-001-999	SPARKEETA BEV	11.23
142	E-001-999	LA VIDA BEV	11.23
143	E-002-999	SIERRA CLUB GINGER	11.23
144	E-002-999	SELTZER GINGER	11.23
145	E-002-999	SIERRA CLUB GINGER	9.23
146	E-002-999	ARNOLD BETTER GRADE	5.99
147	E-003-005	FISHER	3.15
148	E-003-008	GRIESDIECK BROS	1.15
149	E-003-013	KAMM	5.50
150	E-003-032	HOOSIER	5.00
151	E-003-035	JUNG	12.00
152	E-003-043	BANKERS	3.56
153	E-003-059	GOLDENROD	25.00
154	E-004-026	DERBY CREAM VAR (B)	18.58
155	E-004-030	DOELGER	8.75
156	E-004-053	LANG	5.30
157	E-004-065	NEUWEILER	2.65
158	E-004-069	RUBSAM & HORMANN (Tie)	4.00
159	E-004-075	ROCHESTER	3.15
160	E-004-091	TACOMA	5.79
161	E-004-095	WEHLE	1.15
162	E-004-116	GLOBE	20.00
163	E-004-296	WIELAND	5.00
164	E-004-351	COMMERCIAL	14.58
165	E-004-999	DUFFY VAR (A)	4.00
166	E-004-999	KICK BEV	5.99
167	E-004-999	NU-ON PRODUCTS	5.00
168	E-004-999	RADER ROOT BEER	12.11
169	E-005-051	FORT PITT	6.00
170	E-008-012	ANHEUSER-BUSCH	5.00

Results of July 1999 JFO Auction Closing August 18, 1999

171	E-009-027	DOELGER	7.01
172	E-009-115	SCHMIDT	6.00
173	E-009-999	UTE CHIEF MANITOU GINGER	9.23
174	E-014-015	BAVARIAN	5.00
175	E-014-022	BILLINGS	7.05
176	E-014-039	BUTTE	5.05
177	E-014-064	EAGLE	7.23
178	E-014-073	EL DORADO	4.55
179	E-014-081	FALSTAFF	2.50
180	E-014-086	FESENMEIER	4.00
181	E-014-088	FITGER	4.09
182	E-014-098	FRESNO	15.50
183	E-014-109	GOETZ	5.00
184	E-014-110	GOETZ	1.15
185	E-014-113	GOLDEN GLOW (Tie)	5.00
186	E-014-127	GRIESEDEICK BROS	1.15
187	E-014-138	HAND	1.15
188	E-014-139	HANLEY	3.50
189	E-014-147	HIGHLANDER	3.09
190	E-014-154	HORTON	5.01
191	E-014-163	KESSLER	3.56
192	E-014-168	KRUEGER	6.23
193	E-014-178	LUCKY LAGER	4.55
194	E-014-179	MAIER	4.55
195	E-014-182	MANKATO	9.01
196	E-014-184	METZ	1.15
197	E-014-185	METZ	5.00
198	E-014-192	MONTEREY	13.50
199	E-014-193	MUEHLEBACH	4.00
200	E-014-194	NARRAGANSET T	4.00
201	E-014-197	NORTHERN	4.09
202	E-014-223	PILSEN	4.00
203	E-014-226	QUEEN CITY VAR (B)	1.15
204	E-014-239	RENNER	2.56
205	E-014-249	SAN ANTONIO	1.15
206	E-014-253	SCHEIDT	3.10
207	E-014-261	SCHMIDT	5.00
208	E-014-267	SOUTHERN SELECT	1.15
209	E-014-272	STANDARD	1.15
210	E-014-273	STANDARD	4.00
211	E-014-275	STEGMAIER	4.00
212	E-014-276	STEGMAIER	4.05
213	E-014-277	STERLING	6.23
214	E-014-279	STRAUB	4.05
215	E-014-280	SUNSHINE	4.00
216	E-014-281	SUNSHINE	4.09
217	E-014-284	TIVOLI	4.55
218	E-014-285	TOPPER	4.09
219	E-014-291	UTICA CLUB	4.00
220	E-014-293	WAGNER	8.79
221	E-014-295	WALTER	2.00
222	E-014-296	WAUSAU	6.23
223	E-014-297	WEHLE	10.00
224	E-014-298	WEST BEND	4.00
225	E-014-299	WIEDEMANN	1.15
226	E-014-300	WIEDEMANN	1.15
227	E-014-301	WIELAND (Tie)	4.00
228	E-014-302	WIELAND	4.00
229	E-014-305	WOODEN SHOE	6.00
230	E-014-307	YUENGLING	5.50
231	E-014-309	ACME	10.79
232	E-014-325	BOBBIE ALE	7.05
233	E-014-361	FOX DELUXE	7.86
234	E-014-363	FREE STATE	6.23
235	E-014-374	SICKS	5.05

236	E-014-395	KUEBLER	6.23
237	E-014-455	WALTER	4.00
238	E-014-456	WAUSAU	4.53
239	E-014-473	BLITZ- WEINHARD	3.09
240	E-014-519	LUCKY	12.79
241	E-014-523	MONARCH	5.00
242	E-014-555	STAG	1.15
243	E-014-557	STAG	10.79
244	E-014-562	TIVOLI-UNION	7.01
245	E-014-574	WEHLE	8.23
246	E-014-622	METZ	4.55
247	E-014-623	METZ	5.03
248	E-014-642	STAR UNION	12.79
249	E-014-670	YOERGS	20.00
250	E-014-697	SCHMIDT	4.00
251	E-014-700	SIOUX CITY	7.23
252	E-014-701	STEGMAIER	1.15
253	E-014-705	OERTEL	3.05
254	E-014-738	TROMMER VAR (B)	20.00
255	E-014-739	FESENMEIER	7.01
256	E-014-760	BOSTON	20.00
257	E-016-004	CUMBERLAND	11.77
258	E-023-015	EHRETS	25.11
259	F-002-999	CALIFORNIA BEV	4.15
260	F-004-999	DUFFY	4.15
261	F-006-039	WELZ & ZERWECK	11.77
262	F-006-999	CHERRY BLOSSOMS	6.10
263	F-006-999	SMITH & CLOUDY	6.10
264	G-001-005	CAMDEN	7.53
265	G-001-007	EBLING	9.23
266	G-001-010	FOX HEAD	7.23
267	G-001-011	GOLDENROD	5.04
268	G-001-018	OLD READING	8.23
269	G-001-020	OLD STOCK	16.00
270	G-001-029	ANN ARBOR	9.50
271	G-001-035	LIEBERT AND OBERT	16.00
272	G-001-041	SEITZ	7.23
273	G-001-042	ACME	25.00
274	G-001-067	HUPFEL	25.00
275	G-006-013	SUNSHINE	3.66
276	H-001-006	NEUWEILER	7.00
277	H-001-013	SUNSHINE	3.65
278	H-001-016	NATIONAL	6.23
279	H-002-004	BERGHOF	2.65
280	H-002-019	FORT PITT	2.65
281	H-002-147	HAGEMEISTER	40.00
282	H-003-022	SCHLITZ	4.00
283	H-004-002	PRIMA SPECIAL	10.79
284	H-005-011	FLOCK	5.00
285	H-005-016	HAZELTON	4.79
286	H-011-004	WEBER	12.17
287	I-007-010	COORS	2.15
288	I-007-011	CROFT	3.66
289	I-007-017	GENESEE	2.15
290	I-007-025	LIEBMANN	2.15
291	I-007-053	HULL	18.00
292	I-007-054	MANHATTAN	28.79
293	I-008-002	NORTHAMPTON	12.23
294	I-019-024	NEUWEILER	3.66
295	I-020-006	HAMM	4.50
296	I-022-001	ARIZONA	4.15
297	M-001-002	HAFFENREFFER	10.00
298	M-001-006	HUDEPOHL	16.00
299	M-001-025	HAFFENREFFER	23.79
300	M-003-016	BARBEY (YELLOW/OTT)	16.00
301	M-003-016	BARBEY	10.56

		(YELLOW/REG)	
302	M-003-999	ALLEGHENY METAL (RED)	14.00
303	M-019-999	KINSEY	4.65
304	M-021-001	RAINIER	37.77
305	M-051-999	KIST BEV	2.65
306	N-009-999	CALSO WATER	5.15
307	N-010-999	MOUNTAIN VALLEY WATER	8.60
308	N-011-999	SAL-U-TARIS	6.75
309	N-024-999	FELIX DRY GINGER	15.00
310	N-050-999	BALLANTINE ALE	8.00
311	N-090-002	RED DOG	15.11
312	O-004-014	SCHAEFER	35.50
313	O-005-007	LUCKY	18.00
314	O-005-023	REGAL	28.00
315	O-006-999	SEEWEE BEV	32.52
316	O-008-UL	HENRY WEINHARD CO	55.00
317	P-005-001	ANHEUSER- BUSCH	45.00
318	P-006-001	F AND S	26.77
319	P-019-002	TOWNSEND	10.06
320	P-019-025	SPRINGFIELD	30.00
321	P-019-041	BLUE RIBBON	40.00
322	P-031-UL	LAMMERS BOT	7.77
323	P-053-005	SCHLITZ	24.77
324	P-103-001	MAIER & ZOBELIN	67.77
325	R-001-002	INTERNATIONAL	6.00
326	R-002-004	IROQUOIS MIN BID \$25	29.77
327	R-003-001	IROQUOIS	15.15
328	Z-LOT-"I"s	350 "I" Types MIN BID \$150	191.65

Thanks to all
58 Bidders

Remember, PLEASE
SEND YOUR BID
SHEETS EARLY

Waiting Until the Last
Minute Does Not Give
You an Advantage

You can Bid by
On a Separate Sheet
or by E-Mail

October 1999 JFO Auction-Closing November 17, 1999- Name & Mem #:

Send Bids To: John Stanley, PO Box 64, Chapel Hill, NC 27514

Auction Rules (Note: No Phone Bidding)

- 1) \$1.00 Minimum Bid on Each Lot, Only 1 Bid for each Lot Allowed
- 2) Openers Sold to Highest Bidder, For Identical Bids Earliest Postmarked Bid Wins
- 3) 7 Days to Return Openers If Not Satisfied, Shipping and Handling Extra
- 4) Openers Shipped Upon Payment (Please Pay within 7 days of Receiving Invoice)
- 5) Results Shown Next JFO Issue (Winning Bidders Receive Copy with Invoice)

Grading (G): 1-Poor, 2-Fair, 4-Good, 6-Very Good, 8-Excellent, 10-Near Mint-Mint

(UL-Unlisted in 99 Handbook, 999 Non-USA-Beer)

JFO # & Description from 1999 Handbook Of United States Beer Advertising Openers and Corkscrews

#	JFO #	Description	ST	G	BID
001	A-001-007	DRINK FITGER'S BEER	MN	10	
002	A-001-008	GLOBE BREWING CO. SAN FRANCISCO PHONE SU-0120	CA	6	
003	A-001-047	SANTA CRUZ BREWING CO. SANTA CRUZ EXCELSIOR BEER	CA	8	
004	A-003-020	C.O. HART, SEATTLE, WASH. MALT SYRUP & HOPS.	WA	6	
005	A-012-001	BURGERMEISTER A TRULY FINE PALE BEER / SHRINE VICTORY CONVENTION JULY 1946 SAN FRANCISCO	CA	6	
006	A-012-999	DRINK ST FRANCIS ORNAGE DRY GINGER ALE / MEYER'S SPECIALTY BEVERAGE CO.		8	
007	A-021-015	NORTHERN BEER WE MADE IT GOOD- YOU MADE IT FAMOUS	MN	10	
008	A-021-999	SPIN AROUND TO ROTHMANN'S EAST NORWICH INN "ROUTE 25 A"		4	
009	A-028-999	D. ALVARADO WHOLESALE LIQUOR DEALER 181 E. EAST I ST. COLTON, CAL.	CA	1	
010	A-035-999	DRINK POWER AND HAVE PEP		6	
011	A-042-004	DRINK "GRAND ISLAND" SPECIAL NONE BETTER.	NE	1	
012	B-001-005	PITTSBURGH BREWING CO. TECH BEER (VAR (B) STEEL)	PA	2	
013	B-001-008	HAMM'S FAMOUS BEER HAMM'S ST. PAUL (50 PERCENT PAINT)	MN	6	
014	B-002-010	OLD MISSION LAGER TRADITIONALLY GOOD MADE IN SAN DIEGO	CA	6	
015	B-008-999	MERCHANTS UNION TRUST CO 715-719 CHESTNUT ST. PHILA. PA.	PA	8	
016	B-008-999	C.L. SAXTON CO. UNION BANK BLDG. REAL ESTATE & INSURANCES PITTSBURGH, PA. / C.L.SAXTON B & L ASSN. CAPITAL \$25,000,000 UNION BANK BLDG. PITTSBURGH, PA.	PA	6	
017	B-008-999	COMPLIMENTS OF JAMES MARONEY 205 SOUTH 13TH STREET PHILADELPHIA, PA / FINDER REWARDED NO. 963	PA	6	
018	B-008-999	GENE-VALL CIGAR CO. INC. INCOMPARABLE HAVANA CIGARS/SAME		6	
019	B-009-999	IF FOUND RETURN TO DERSON CIGAR STORES / OWNER REGISTERED 158		6	
020	B-012-006	COMPLIMENTS OF LEMBECK & BETZ EAGLE BREWING CO. JERSEY CITY, N.J. / DRINK AMERICAN CLUB BEER	NJ	8	
021	B-013-006	GRIESEDECK BROS. ST. LOUIS	MO	8	
022	B-013-999	DRINK WESTERN CLUB SPECIAL		8	
023	B-013-999	YANKEE DRY GINGER ALE		8	
024	B-013-999	DRINK SPRINGFIELD BOTTLING CO'S GINGER ALE AND NEURA CURA		4	
025	B-014-099	SPARKLING KOCH'S ALE	NY	6	
026	B-014-136	BECKER PRODUCTS CO. OGDEN, UTAH / DRINK BECCO NOURISHING AS BEER	UT	8	
027	B-014-999	SHAMROCK GINGER ALE POLAR AERATED WATER WORKS LIMITED		10	
028	B-014-999	FELIX DRY GINGER ALE FELIX ORANGE DRY / FELIX GRAPE FRUIT DRY FELIX CLUB SODA		10	
029	B-014-999	KIEL "BEST MIXING SODAS"		10	
030	B-014-999	APOLLO BOTTLING CO. 30TH ANNIVERSARY 1949 APOLLO, PA.	PA	4	
031	B-014-999	DRINK BROAD ROCK GINGER ALE "GOOD FOR WHAT ALES YOU"		6	

October 1999 JFO Auction-Closing November 17, 1999- Name & Mem #:

032	B-015-014	O.K. EXTRACT SUP. CO. 1058 THIRD ST.		4	
033	B-016-999	LIME COLA		4	
034	B-018-107	HAMM'S ST. PAUL	MN	8	
035	B-018-115	SCHLITZ IN BROWN BOTTLES / SCHLITZ PALE DRY GINGER ALE	WI	8	
036	B-018-146	SCHILLER BROS. BEER KANSAS CITY, MO. 36 BOTTLES IN BASKET \$3.15	MO	6	
037	B-018-163	COLUMBIA BREWING CO. TACOMA, WASH.	WA	4	
038	B-018-242	KEY TO ACME BREWING CO'S HIGH GRADE BEERS MACON, GA. (VAR (A) SLANTED LETTERS)	GA	4	
039	B-018-399	COMPLIMENTS OF MT. HOOD BREWING CO. PORTLAND, ORE.	OR	4	
040	B-018-999	BEAUFONT GINGER ALE RICHMOND, VA.	VA	4	
041	B-018-999	KEY TO COLBY POP		6	
042	B-019-100	RAINIER BEER / SAME	WA	4	
043	B-019-202	DRINK ACME BEER FOR HEALTH	CA	8	
044	B-019-999	DRINK LEMON KOLA		4	
045	B-019-UL	FINKE-UHEN BR'G CO' BURLINGTON, WIS. SPECIAL BREW	WI	4	
046	B-021-016	CALL FOR EVANSVILLE BREWING ASS'N BEERS STERLING, RHEINGOLD, PALE EXPORT	IN	4	
047	B-021-039	INDEPENDENT BRG. CO. OF PITTSBURGH / DUQUESNE SILVER TOP BEER	PA	6	
048	B-021-129	KEY TO PILSENER'S EXTRA PILSENER BOTTLED BEER	OH	4	
049	B-021-168	INDIAN BREWING CO. / DRINK INDIAN BEER	PA	4	
050	B-021-246	KEY TO THE GERMAN BREW'G CO'S BEERS CUMBERLAND, MD.	MD	6	
051	B-021-430	OLD COLONY BREWERIES CO. FALL RIVER KEY TO CHIEF ALE	MA	2	
052	B-021-462	DRINK AKRON BREWING COMPANY WHITE ROCK EXPORT	OH	6	
053	B-021-999	GRA-ROCK GINGER ALE		8	
054	B-021-999	DRINK CELERY COLA STIMULATING		4	
055	B-021-UL	CALL FOR MATHIE BREWING CO. THE BEER THAT IS STORED IN GLASS TANKS	WI	4	
056	B-022-046	K.C.B. CO. OLD FASHIONED BEER	MO	2	
057	B-022-107	GLUEK BRG. CO. MINNEAPOLIS KEY TO "GLUEK ROOT BEER" "GLIX" BEVERAGE	MN	6	
058	B-022-999	DRINK SULPHO-SALINE FOR THE STOMACH /SOTERIAN GINGER ALE		6	
059	B-023-097	PENN BEVERAGE CO. PHILADELPHIA PENN SPECIAL	PA	4	
060	B-024-023	MATHIE-RUDER BREW. CO. WAUSAU WISCONSIN ENJOY RED RIBBON & GOLD STAR BEER	WI	6	
061	B-024-047	POINTER BREWING CO. CLINTON, IOWA POINTER BEER	IA	4	
062	B-024-055	POINTER BREWING CO. CLINTON, IOWA	IA	6	
063	B-024-063	DICK'S BEER GENUINE (CHARACTER) PILSENER	IL	4	
064	B-025-999	TRUE FRUIT CONCORD GRAPE / DRINK HYBALL GINGER ALE ALL GINGER THE SETHNESS CO CHICAGO ILL	IL	2	
065	B-031-999	AUTO TIRE CO. AUTO SUPPLIES 5TH & A. SAN DIEGO, CAL. / TIRE REPAIRING THAT PAYS	CA	4	
066	B-032-999	DRINK MOLSON'S ALE (CANADIAN)		6	
067	B-033-001	SCHOENHOFEN'S EDELWEISS BEER	IL	6	
068	B-035-004	STORZ BEER / SAME	NE	4	
069	B-055-001	BUDWEISER	MO	4	
070	B-055-004	BUSCH BORN OF NATURAL INGREDIENTS SMOOTH REFRESHING BEER	MO	6	
071	B-055-012	MICHELOB (EAGLE IN A)	MO	8	
072	B-058-021	ANHEUSER-BUSCH BUD LIGHT SPUDS MACKENZIE (ALL PRINT)	MO	6	
073	B-062-001	COORS	CO	8	
074	B-065-002	DRINK SILVER FOAM BEVERAGES (PROBABLY CANADIAN NOT BATTLE CREEK, MICH. BRWY)		8	
075	C-005-001	PABLO MADE BY PABST MILWAUKEE / PABLO THE HAPPY HOPPY DRINK	WI	6	

October 1999 JFO Auction-Closing November 17, 1999- Name & Mem #:					
--	--	--	--	--	--

076	C-005-002	PABST BLUE RIBBON / THE BEER OF QUALITY	WI	6	
077	C-010-010	IRON CITY BEER	PA	6	
078	C-010-028	MILLER HIGH LIFE BEER (BOTTLE)	WI	8	
079	C-010-046	WAYNE BREWING CO. ERIE, PA. / WAYNE BREW	PA	8	
080	C-011-021	TIVOLI BREWING CO	MI	6	
081	C-012-003	CAMDEN BEER	NJ	8	
082	C-012-020	OLD STOCK BEER	NJ	4	
083	C-012-046	FORT PITT BEER & ALE	PA	8	
084	C-012-087	KOEHLER'S BEER OLD DOBBIN ALE	PA	6	
085	C-013-040	FORT PITT BEER	PA	10	
086	C-013-041	FORT PITT DOUBLE LAGERED BEER	PA	8	
087	C-013-120	ZIEGLER'S BEER	WI	6	
088	C-013-168	CHESTER BREWERY, INC. CHESTER, PA. CHESTER BEER "IT MAKES FRIENDS"	PA	4	
089	C-013-304	ACME LAGER BEER / ROYAL-CREST WINES	CA	6	
090	C-014-035	OLDE VIRGINIA PREMIUM BEER-POPULAR PRICE	VA	4	
091	C-016-064	RUBSAM & HORMANN BREWING CO. NEW YORK CITY, N.Y. / (CROWN) CROWN PREMIUM BEER	NY	8	
092	C-016-999	MELOTTI BREWERY (FOREIGN ??? NOT SURE)		6	
093	C-030-001	GAMBRINUS BREWING CO. PORTLAND, OREGON SELECT EXPORT (MINIMUM BID \$40)	OR	6	
094	D-009-006	MELLOW BREW	WI	8	
095	E-001-013	THE TIVOLI-UNION CO. DENVER, COLO. / TIVOLI BEER "FIRST FOR THIRST"	CO	10	
096	E-001-019	CAPITOL BREWING CO. OF MILWAUKEE INC. / ALWAYS ASK FOR CAPITOL BEER	WI	8	
097	E-001-023	IN JERSEY IT'S HENSLER'S BEER & ALE / SAME	NJ	6	
098	E-001-024	KOEHLER'S BEER OLD DOBBIN ALE	OH	6	
099	E-001-037	STAR BREWERY COMPANY VANCOUVER, WASH. / HOP GOLD BEER SILVER SPRINGS BEER	WA	8	
100	E-001-999	VESS BEVERAGES THE BEST "MIXERS" / THIRSTY? JUST WHISTLE PHONE: JEFF. 0590		4	
101	E-001-999	7UP PEPS YOU UP 7UP COOLS YOU OFF / DRINK 7UP THE "FRESH UP" DRINK		6	
102	E-003-003	DELMARVA BEER WILMINGTON, DEL. / SAME	DE	8	
103	E-003-013	DRINK KAMM'S QUALITY BEER / SAME (COPPER)	IN	6	
104	E-003-020	STANDARD BREWING CO. INC. ROCHESTER, N.Y. / STANDARD ALE PORTER-HALF & HALF	NY	4	
105	E-003-050	GIPPS BEER PEORIA / SAME	IL	4	
106	E-003-999	CONNER MADE GINGER PURE AND WHOLESOME / CONNER BOTTLING WORKS NEWFIELDS N.H.	NH	6	
107	E-004-006	ATLANTIC BREWING CO. / TAVERN PALE BEER	IL	4	
108	E-004-007	ATLAS BR'G. CO. CHICAGO CANAL 6200 / ATLAS PRAGER BEER	IL	6	
109	E-004-008	ATLAS B'R'G. CO. CHICAGO CANAL 6200 / FOR LOVERS OF BEER ATLAS CERTIFICATE BREW	IL	6	
110	E-004-009	ATLAS B'R'G. CO. CHICAGO CANAL 6200 / IMPORTED QUALITY REGULAR PRICE PRAGER BEER	IL	8	
111	E-004-010	ATLAS B'R'G. CO. CHICAGO CANAL 6200 / REACH FOR A TREAT DRINK ATLAS SPECIAL BREW	IL	8	
112	E-004-017	BURGERMEISTER BEER / GOLDEN STATE BEER (COPPER)	CA	6	
113	E-004-018	BUSHKILL BEER / SAME	PA	6	
114	E-004-020	CENTLIVRE BEER FORT WAYNE	IN	6	
115	E-004-025	DRINK COORS GOLDEN BEER / SAME (VAR (B) SQUARE HEAD)	CO	8	
116	E-004-029	THE CHRIST. DIEHL BREWING CO. DEFIANCE, OHIO / "DRINK CENTENNIAL BEER" (VAR (A) QUOTES)	OH	6	
117	E-004-033	FALLS CITY BREWING CO. LOUISVILLE, KY. / FALLS CITY BEER	KY	4	
118	E-004-034	FALLS CITY EXTRA PALE LAGER / FALLS CITY SPECIAL LAGER	KY	2	

October 1999 JFO Auction-Closing November 17, 1999- Name & Mem #:

119	E-004-035	FALSTAFF / THE CHOICEST PRODUCT OF THE BREWER'S ART (VAR (A) BREWER'S)	MO	2	
120	E-004-037	GENERAL BREWING CORPORATION SAN FRANCISCO / HERE'S LUCK WITH LUCKY LAGER (VAR (A) 'WITH LUCKY')	CA	4	
121	E-004-038	THE GLOBE BREWING CO. BALTO, MD. / DRINK ARROW BEER	MD	4	
122	E-004-040	GOLDEN WEST BREWING CO. OAKLAND-SAN FRANCISCO-LOS ANGELES / GOLDEN GLOW BEER	CA	4	
123	E-004-047	HUDEPOHL BREWING CO. / CINCINNATI OHIO (SCREWDRIVER TIP)	OH	2	
124	E-004-049	INDEPENDENT MILWAUKEE BREWERY / BRAUMEISTER BEER	WI	8	
125	E-004-050	MANITOWOC PRODUCTS CO. MANITOWOC, WIS. / KINGSBURY PALE	WI	6	
126	E-004-051	KOEHLER'S BEER / SAME	OH	6	
127	E-004-053	LANG'S EXTRA FINE ALE / LANG'S EXTRA FINE BEER	NY	4	
128	E-004-061	MILLER HIGH LIFE BREW / MILLER HIGH LIFE SYRUP	WI	6	
129	E-004-062	MILLER HIGH LIFE BEER / UNIVERSITY CLUB (VAR (A) ROUND HEAD MILLER BLOCK LETTERS)	WI	8	
130	E-004-062	MILLER HIGH LIFE BEER / UNIVERSITY CLUB (VAR (B) SQUARE HEAD MILLER SCRIPT LETTERS)	WI	8	
131	E-004-065	LOUIS F. NEUWEILER'S SONS ALLENTOWN, PA. / NEUWEILER'S BEER	PA	1	
132	E-004-070	RAINIER BREWING CO., INC. SAN FRANCISCO, CAL. / BEER-RAINIER-ALE	CA	1	
133	E-004-072	REGAL AMBER BREWING CO. / REGAL AMBER LAGER BEER (VAR (B) NO HYPHEN)	CA	6	
134	E-004-072	REGAL AMBER BREWING CO. / REGAL AMBER-LAGER BEER (VAR (A) HYPHEN)	CA	8	
135	E-004-075	ROCHESTER BREWING CO. / OLD TOPPER ALE	NY	6	
136	E-004-076	JACOB RUPPERT BREWER-NEW YORK / ORDER KNICKERBOCKER BY THE CASE	NY	6	
137	E-004-097	WHITE CROWN BEER-ALE	OH	6	
138	E-004-102	ATLAS B'R'G. CO. CHICAGO CANAL 6200 / DRINK ATLAS BEER	IL	6	
139	E-004-104	BURLINGTON BREWING COMPANY BURLINGTON, WISCONSIN / BURLINGTON BEER	WI	1	
140	E-004-108	COOK'S GOLDBLUME / SAME	IN	6	
141	E-004-129	PABST BLUE RIBBON BREW / THE BREW THAT BRINGS BACK MEMORIES	WI	4	
142	E-004-132	PRIMA COMPANY BEVERAGES / CHICAGO, PHONE LINCOLN 4302	IL	6	
143	E-004-136	REGAL AMBER BREWING CO. / REGAL PALE DE LUXE	CA	8	
144	E-004-138	RENNER'S YOUNGSTOWN / PILSENER BEER	OH	4	
145	E-004-144	SCHORR-KOLKSCHNEIDER BRWG. CO. ST. LOUIS, MO. / S-K LAGER BEER	MO	4	
146	E-004-146	SHEA'S STOCK ALE / SHEA'S SELECT (CANADIAN)		6	
147	E-004-199	TROMMER'S MALT BEERS / SAME	NY	6	
148	E-004-276	BLITZ-WEINHARD CO. / WEINHARD & BLITZ BEER	OR	6	
149	E-004-277	THE JOHN EICHLER BREWING CO. NEW YORK CITY, N.Y. / EICHLER'S BEER	NY	8	
150	E-004-282	SCHMIDT'S CITY CLUB / SAME	MN	6	
151	E-005-999	PARKY'S TAVERN WINE-BEER-CHEER MCKINLEY AT MORTON TACOMA, WASH.	WA	6	
152	E-006-055	THE VICTOR BREWING CO. JEANNETTE, PA. / SAME	PA	6	
153	E-006-056	THE AUGUST WAGNER & SONS BREWING CO. COLUMBUS, O. / AUGUSTINER GAMBRINUS	OH	8	
154	E-007-084	PRIMA COMPANY BEVERAGES / CHICAGO PHONE LINCOLN 4302	IL	6	
155	E-008-013	BERLIN BREWING CO. MFGRS BERLINER BEER / SAME	WI	6	
156	E-008-030	WAYNE BREWING CO. ERIE, PA. / SAME	PA	4	
157	E-008-083	GIPPS BREWING CO. PEORIA, ILL. / SAME	IL	4	
158	E-008-999	DRINK MOXIE DRINK MOXIE / SAME		4	
159	E-008-999	BRITISH COLUMBIA BREWERIES LTD. / CASCADE BEER VANCOUVER, B.C.		4	
160	E-009-009	GRAUPNER'S POR-DER / GRAUPNER'S SELECT	PA	6	

October 1999 JFO Auction-Closing November 17, 1999- Name & Mem #:

161	E-009-041	DRINK RAINIER / SAME	WA	8	
162	E-009-043	RUHSTALLER'S GILT EDGE LAGER / SAME	CA	6	
163	E-009-111	GOLDEN WEST BREW MALT BEVERAGE / GOLDEN WEST BREW FOR SATISFACTION	CA	6	
164	E-009-999	COOKS MINERAL WATER / THE WATER OF QUALITY		2	
165	E-011-001	ATLAS BREWING COMPANY CHICAGO, ILLINOIS / ATLAS PRAGER BEST BEER IN TOWN	IL	8	
166	E-011-003	ANHEUSER-BUSCH BUDWEISER / SAME	MO	6	
167	E-011-006	KAIER'S OUTSTANDING BEER / SAME	PA	4	
168	E-011-013	STEGMAIER BREWING CO. WILKES-BARRE, PA. / BREWERS AND BOTTLEERS OF GOLD MEDAL BEER	PA	6	
169	E-011-016	DIXIE BEER IT SPEAKS FOR ITSELF / SAME	LA	8	
170	E-011-999	DRINK PEPSI COLA DRINK PEPSI COLA / DRINK PEPSI-COLA DRINK PEPSI-COLA		6	
171	E-011-999	"FRESH UP" WITH SEVEN-UP / SAME		8	
172	E-011-999	FROSTIE ROOT BEER / SAME		8	
173	E-013-021	WARSAW BREWING CORP. / BURGEMEISTER BEER (COPPER)	WI	8	
174	E-014-002	A-1 PILSNER BEER PHOENIX, ARIZ. / SAME	AZ	8	
175	E-014-004	ACME BREWERIES SAN FRANCISCO / ACME BEER	CA	6	
176	E-014-007	ALTES LAGER / THE ONLY EASTERN BEER MADE IN THE WEST	CA	10	
177	E-014-009	AMERICAN BREWERY, INC. BALTIMORE, MD. / AMERICAN BEER AMERICAN ALE	MD	8	
178	E-014-016	MAGNUS BECK BRG. CO. BUFFALO, N.Y. / BECK'S BEER BECK'S BEER	NY	8	
179	E-014-018	BECKER'S BEER OGDEN, UTAH	UT	8	
180	E-014-021	BEVERWYCK BREWERIES, INC. ALBANY, NEW YORK / SAME	NY	6	
181	E-014-022	BILLINGS BREWING CO. BILLINGS, MONTANA	MT	8	
182	E-014-028	BOBBIE ALE WHITE CAP BEER / SAME	WI	8	
183	E-014-033	PETER BUB BREWERY, INC. WINONA, MINN.	MN	6	
184	E-014-037	BURGERMEISTER BEER / GOLDEN STATE BEER	CA	8	
185	E-014-042	CANANDAIGUA IT'S DESUGARIZED / CANADIAN CREAM ALE	NY	4	
186	E-014-043	CASPER BREWING CO. CASPER, WYOMING / HILLCREST PILSENER PALE-DRY	WY	6	
187	E-014-045	COLD SPRING BREWING CO. HACKER'S ALE / SAME	MA	6	
188	E-014-058	DELMARVA BEER WILMINGTON, DEL. / SAME	DE	8	
189	E-014-071	EDELWEISS BEER / A CASE OF GOOD JUDGMENT	IL	8	
190	E-014-073	EL DORADO BREWING CO. / VALLEY BREW BEER STOCKTON, CALIF.	CA	6	
191	E-014-080	F.& S. BEER SHAMOKIN, PA. / SAME	PA	6	
192	E-014-101	GENESEE BEER 12 HORSE ALE / SAME	NY	10	
193	E-014-102	A.GETTELMAN BRG.CO. MILWAUKEE,WIS./GET...GET...GETTELMAN	WI	6	
194	E-014-104	GIBBONS BEER-ALE	PA	6	
195	E-014-118	GRAIN BELT BEER...FROM PERFECT BREWING WATER / SAME	MN	6	
196	E-014-122	R.H. GRAUPNER, INC. HARRISBURG, PA. / SAME	PA	8	
197	E-014-123	GRAUPNER'S BEER HARRISBURG, PA. / GRAUPNER'S BEER FIRST BY FAR	PA	10	
198	E-014-124	GREAT FALLS BEER GREAT FALLS, MONT.	MT	8	
199	E-014-125	GREAT FALLS LAGER BEER	MT	6	
200	E-014-127	GRIESE DIECK BROS. ST. LOUIS-BEER / SAME	MO	6	
201	E-014-128	GRIESE DIECK BROS. ST. LOUIS LIGHT LAGER / SAME	MO	8	
202	E-014-129	GUNTHER'S BEER BALTIMORE, MD. / "IT'S DRY AND BEER-Y" (COPPER)	MD	8	
203	E-014-130	HABERLE SYRACUSE / SAME	NY	6	
204	E-014-131	HABERLE BRG. CO. CONGRESS BEER / SAME	NY	8	

October 1999 JFO Auction-Closing November 17, 1999- Name & Mem #:

205	E-014-133	HAMM'S BEER IT'S THE REFRESHINGEST / FROM THE LAND OF SKY BLUE WATERS	MN	10	
206	E-014-135	THEO. HAMM BRG. CO. ST. PAUL, MINN. / THE BEER REFRESHING	MN	8	
207	E-014-139	HANLEY'S EXTRA PALE / QUALITY GUARDED SINCE 1876	RI	8	
208	E-014-141	HAUENSTEIN'S NEW ULM, MINN. / SAME	MN	8	
209	E-014-143	HEILEMAN'S OLD STYLE LAGER / SAME	WI	8	
210	E-014-146	YOU'LL LIKE HENSLER BEER / SAME	NJ	8	
211	E-014-147	HIGHLANDER PALE BEER / SAME	MT	6	
212	E-014-149	HOFFMAN BEER & ALE / HOFFMAN BEVERAGES	NJ	8	
213	E-014-150	ENJOY HOLIHAN'S ALE / SAME	MA	4	
214	E-014-152	HORNELL BREWING CO. INC. HORNELL BEER / HORNELL BREWING CO. INC. K.D.K. CREAM ALE	NY	8	
215	E-014-154	"DRINK" HORTON'S BEER / SAME	NY	4	
216	E-014-155	DRINK HUDEPOHL BEER / SAME	OH	8	
217	E-014-157	HYDE PARK BOTTLE BEER / SELDOM EQUALED NEVER EXCELLED	MO	6	
218	E-014-158	FRANK JONES PORTSMOUTH ALE / SAME	NH	6	
219	E-014-178	LUCKY LAGER LUCKY ALE / SAME	CA	4	
220	E-014-181	MANKATO BREWING CO. KATO LAGER BEER / SAME	MN	2	
221	E-014-185	BOTTLE OF METZ PLEASE METZ JUBILEE BEER / SAME (COPPER)	NE	6	
222	E-014-224	PITTSBURGH BREWING CO. DUTCH CLUB BEER / A FINE OLD BEER IN BOTTLES	PA	6	
223	E-014-264	SCHMIDT'S OF PHILADELPHIA / BEER-ALE BREWERS SINCE 1860	PA	10	
224	E-014-315	GOOD OLD BALBOA BEER	CA	4	
225	E-014-317	BECKER'S BEER	UT	8	
226	E-014-318	BECKER BREWING & MALTING CO. / BECKER'S UINTA CLUB BEER	WY	8	
227	E-014-319	BECKER BREWING & MALTING CO.	UT	8	
228	E-014-330	BREW "102" BREW "102" / SAME	CA	8	
229	E-014-333	BUDWEISER KING OF BEERS / SAME	MO	8	
230	E-014-350	DREWRY'S BEER ORDER PHONE 96361 / SAME		6	
231	E-014-351	DREWRY'S SOUTH BEND, IND. / DRINK DREWRY'S ALE-LAGER BEER	IN	8	
232	E-014-373	R.H. GRAUPNER HARRISBURG, PA. / SAME	PA	6	
233	E-014-375	GREAT FALLS SELECT / SAME	MT	10	
234	E-014-377	HAMM'S BEER BORN IN THE LAND OF SKY BLUE WATERS / SAME	MN	6	
235	E-014-378	HAMPDEN BREWING CO. / HAMPDEN ALE	MA	8	
236	E-014-385	HUDEPOHL BREWING CO. CINCINNATI OHIO / SAME	OH	8	
237	E-014-389	CHESTER BREWERY, INC. CHESTER, PA. / CHESTER PILSNER SILVER DIME PREMIUM	PA	8	
238	E-014-390	KIEWEL BREWING CO. ORDER PHONE 96361 / SAME		2	
239	E-014-436	SAN MIGUEL BEER FAMOUS THE WORLD OVER (FOREIGN)		4	
240	E-014-473	BLITZ-WEINHARD BLITZ-WEINHARD / SAME	OR	6	
241	E-014-481	COLD SPRING BEER	MN	6	
242	E-014-489	EASTSIDE BEER EASTSIDE BEER / SAME	CA	8	
243	E-014-507	THEO. HAMM BREWING CO. / HAMM'S SMOOTH MELLOW BEER	MN	6	
244	E-014-508	HAUENSTEIN BRG. CO. NEW ULM, MINN. / HAUENSTEIN'S BEER HAUENSTEIN'S BEER	MN	10	
245	E-014-512	THE HUDEPOHL BREWING CO. / CINCINNATI, OHIO	OH	6	
246	E-014-514	HYDE PARK BEER HYDE PARK BEER / SAME	MO	6	
247	E-014-566	THE VICTOR BREWING CO. JEANNETTE, PA. / SAME	PA	8	
248	E-014-583	ANACONDA BREWING CO. / ROCKY MOUNTAIN BEER	MT	8	
249	E-014-611	GUNTHER'S BEER BALTIMORE, MD. / A GOOD HEAD ON A FINE BODY	MD	6	

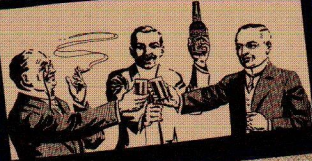
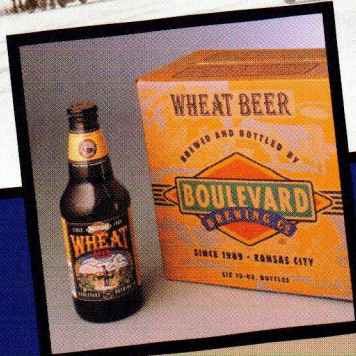
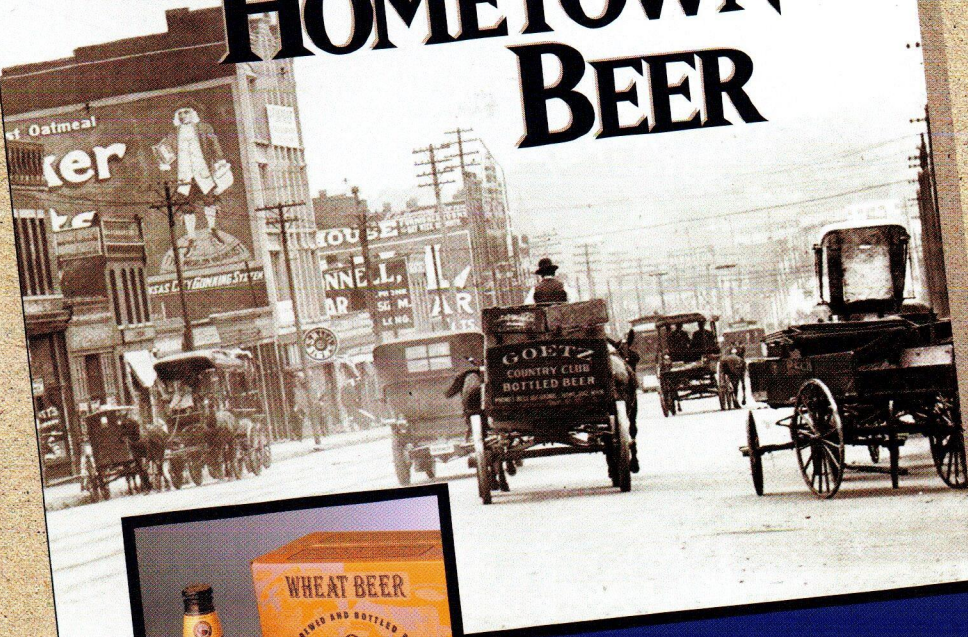
October 1999 JFO Auction-Closing November 17, 1999- Name & Mem #:

250	E-014-625	HARRY MITCHELL'S GOOD HONEST BEER / SAME (COPPER)	TX	6	
251	E-014-651	VERNON BREWING CO. LOS ANGELES, CALIF. / GOLDEN CREME BEER VERNON CREME ALE	CA	6	
252	E-014-709	ACME-LUCKY BEER BILL ENDERT	CA	6	
253	E-014-730	SCHLITZ BEER MILWAUKEE, WISCONSIN / SAME	WI	6	
254	E-014-807	PFEIFFER BREWING CO. ST. PAUL, MINNESOTA / PFEIFFER'S FAMOUS BEER	MN	6	
255	E-016-004	THE CUMBERLAND BREWING CO. "OLD EXPORT BEER"	MD	6	
256	F-002-999	HEIDELBERG-HOFBRAU ON ITS REOPENING / ON THE SQUARE - MADISON, WIS.	WI	8	
257	F-018-999	STERLING ROCK SALT / BROWN & SHAW EASTERN AGENTS, NEW YORK, N.Y.	NY	6	
258	G-001-012	DRINK GRAND PRIZE LAGER BEER	TX	4	
259	G-001-018	OLD READING BEER (BOTTLE)	PA	4	
260	G-001-021	PABST BLUE RIBBON BEER (BOTTLE)	WI	4	
261	G-002-006	PENNSYLVANIA DUTCH OLD GERMAN BEER	PA	6	
262	G-002-999	ROYAL CROWN COLA BEST BY TASTE-TEST		4	
263	G-002-999	DIAMOND GINGER ALE WATERBURY, CONN.	CT	6	
264	G-005-024	DRINK BARMA BLATZ-MIL. THE UNEQUALED NON INTOXICATING CEREAL BEVERAGE	WI	2	
265	G-008-010	STANDARD TRU-AGE BEER / SAME		8	
266	G-008-999	CRYSTAL BOTTLED WATERS CO. PHONE 264-0221 - PHOENIX	AZ	6	
267	G-009-001	BECK'S BUFFALO'S BEST BEER (WHITE ON RED)	NY	4	
268	G-009-010	OLD READING BEER "ITS SMOOTHER" (BLACK ON GREEN)	PA	4	
269	G-009-011	ORTLIEB'S BEER PHONE MARKET 4728 (BLACK ON GREEN)	PA	6	
270	G-009-012	ORTLIEB'S PREMIUM LAGER BEER (BLACK ON GREEN)	PA	6	
271	G-009-022	STEGMAIER BREWING CO. WILKES BARRE, PA. / STEGMAIER'S GOLD MEDAL BEER (BLACK ON YELLOW)	PA	2	
272	G-009-023	STEGMAIER BREWING CO. WILKES BARRE, PA. / STEGMAIER'S GOLD MEDAL BEER (BLACK ON RED)	PA	6	
273	G-009-025	STEGMAIER BREWING CO. WILKES BARRE, PA. / STEGMAIER'S GOLD MEDAL BEER (GOLD ON RED)	PA	4	
274	G-009-035	GLOBE BREWERY, CO. BALTO, MD. ARROW BEER (BLACK ON RED)	MD	4	
275	G-009-037	SCHEIDT'S VALLEY FORGE BEER (BLACK ON GREEN)	PA	2	
276	G-009-038	SCHREIBER BREWING CO. INC. BUFFALO, NEW YORK (BLACK ON NATURAL)	NY	4	
277	G-024-002	COORS BEER GET:A:GRIP (BOTTLE)	CO	8	
278	G-029-001	COORS	CO	8	
279	G-050-001	DEVIL MOUNTAIN BREWING COMPANY (GILROY, CA MICRO)	CA	10	
280	H-002-003	ATLANTIC ALE AND BEER	GA	6	
281	H-005-009	NEUWEILER'S / FAMOUS BREWS	PA	6	
282	H-006-005	PABST BREWING CO. MILWAUKEE (REST IN HANDBOOK)	WI	6	
283	H-006-011	OLYMPIA BEER / OLYMPIA BEER "IT'S THE WATER"	WA	8	
284	H-006-012	PABST BREWING CO., MILW., WISC. PABST BLUE RIBBON DISPLAY NO. 2463 / WHAT'LL YOU HAVE? PABST BLUE RIBBON	WI	8	
285	H-007-002	BLATZ MILWAUKEE'S MOST EXQUISITE BEER	WI	6	
286	H-007-005	KINGSBURY	WI	4	
287	H-007-009	ALWAYS SERVE POTOSI BEER PILSENER & EXPORT	WI	8	
288	H-011-002	BLATZ MILWAUKEE'S MOST EXQUISITE BEER	WI	4	
289	I-007-012	DREWRY'S CANADA'S PRIDE SINCE 1877		8	
290	I-007-015	FORT PITT BREWING CO. PITTSBURGH, PA.	PA	6	
291	I-007-032	FOR OPENING PABST TAPA CAN (VAR (A) SINGLE SCRIPT PABST)	WI	6	
292	I-007-041	WALDORF LAGER CHAMPAGNE OF BEER	OH	6	
293	I-007-043	FOR OPENING ACME BEER AND ALE	CA	10	

October 1999 JFO Auction-Closing November 17, 1999- Name & Mem #:
--

294	I-007-053	FOR OPENING HULL'S ALE AND LAGER NEW HAVEN, CONN.	CT	8	
295	I-008-001	PETER FOX BREWING CO. CHICAGO	IL	2	
296	I-009-001	WALDORF / ALE & LAGER	OH	6	
297	I-022-016	SILVER BAR	FL	6	
298	I-023-001	FEHR'S X/L BEER	KY	6	
299	J-009-001	ADOLPH COORS (REST IN HANDBOOK)	CO	8	
300	L-001-001	BLATZ	WI	8	
301	L-001-002	BUDWEISER	MO	2	
302	L-001-004	MILLER (VAR B GOLD LETTERS IN BACKGROUND)	WI	2	
303	L-001-006	RUPPERT KNICKERBOCKER	NY	6	
304	L-001-007	SCHLITZ	WI	6	
305	L-004-005	CANADIAN BRAND CREAM ALE		6	
306	L-004-061	BLATZ (REST IN HANDBOOK) (NO SOUVENIR LABEL)	WI	2	
307	L-004-063	JOS. SCHLITZ BREWING CO. (REST IN HANDBOOK)	WI	6	
308	L-009-001	BUD KING OF BEERS (NECK LABEL) BUDWEISER KING OF BEERS (LABEL)	MO	8	
309	L-009-002	BUD LIGHT (NECK LABEL) BUD LIGHT BEER (LABEL)	MO	8	
310	L-009-003	BUSCH (NECK LABEL) BUSCH (PIC OF MOUNTAINS)	MO	8	
311	M-004-002	BLATZ (SCRIPT) MILWAUKEE (PRINT)	WI	4	
312	M-018-001	HONORARY BUDWEISER BREWMASTER 7 GOLDEN KEYS / THIS CALLS FOR BUD...7 GOLDEN KEYS	MO	8	
313	M-023-001	COORS AMERICA'S FINE LIGHT BEER	CO	6	
314	M-029-007	STERLING MELLOW BEER		4	
315	M-029-UL	BUDWEISER KING OF BEERS MUNDT DISTRIBUTING PHONE MU 7-2673 STRATFORD, WIS.	WI	8	
316	M-030-999	7 Up SEVEN UP BOISE, IDAHO RETAIL PRICE 49c	ID	8	
317	M-038-006	1968 JOS. SCHLITZ BREWING CO. MILWAUKEE, WIS. GENUINE DRAFT BEER / OLD MILWAUKEE	WI	8	
318	M-039-008	INTERNATIONAL (REST IN HANDBOOK)	NY	8	
319	M-083-008	MILLSTREAM BREWING CO. AMANA, IOWA BREWERS OF MILLSTREAM LAGER BEER SCHILD BRAU PILS	IA	8	
320	M-999-999	SET OF M-10-1, M-11-1, M-12-1, M-12-2, M-13-1 BALLANTINE	NJ	6	
321	N-002-001	DRINK DIXIE BEER	LA	4	
322	N-009-008	VIENNA BREWING CO. CINCINNATI VIENNA STYLE BEER	OH	4	
323	N-014-001	TOPPER (PROBABLY NON-BEER)	NY	8	
324	N-026-001	DRINK BREWERY FRESH RICHBRAU BEER FAVORED FOR ITS'FLAVOR	VA	8	
325	P-008-024	MCAVOY BREWING CO. CHICAGO / MALT MARROW	IL	4	
326	P-008-073	WM. J. LEMP BREWING COMPANY ST. LOUIS, MO. / SAME	MO	6	
327	P-008-114	NARRAGANSETT BREWING CO. (REST IN HANDBOOK)	RI	4	
328	P-024-009	COORS GOLDEN. / SAME	CO	1	
329	P-043-005	STROH'S BEER DETROIT / SAME	MI	2	
330	P-057-005	SCHLITZ BEER (SCHLITZ GLOBE) / SAME	WI	8	
331	P-058-001	RAHR 1847 MALT OF REPUTATION (MINIMUM BID \$40)	WI	6	
332	P-138-UL	MOERLBACH BEER AND ALE PURE NUTRITIOUS FOODS (ICE PICK TIP LAST HALF INCH BROKE OFF)	NY	4	
333	Q-001-002	SCHMIDTS OF PHILA. (WHITE ON RED)	PA	6	
334	Q-010-017	BUSCH HEAD FOR THE MOUNTAINS (BLUE ON WHITE)	MO	8	
335	Q-019-003	BUD LIGHT BEER (BLUE ON WHITE LABEL)	MO	6	
336	Q-022-UL	OLD MILWAUKEE BEER (WHITE ON RED)	WI	8	
337	R-001-002	INTERNATIONAL (REST IN HANDBOOK)	NY	4	
338	R-025-001	BUDWEISER (BAT)	MO	10	

HOMETOWN BEER



**A HISTORY OF
KANSAS CITY'S BREWERIES**
By H. James Maxwell and Bob Sullivan, Jr.

A comprehensive history of the breweries of Kansas City from the 1850s to the present, including branches and depots of out-of-town breweries that did business in Kansas City prior to Prohibition. The book includes 300 pages of historical photos, human interest stories and related breweriana, with 352 color and 233 black and white illustrations. This edition is a hard bound 9" x 12" coffee table book that presents a unique perspective on Kansas City history.

Retail Price \$59.95

Special Price \$50.00 (includes shipping and sales tax)

(Quantity Discounts – Order 5-9 books at \$48.00 each or 10 or more books at \$45.00 each)

Name: _____

Address: _____

Phone: _____

No. of books _____ Amount enclosed _____

Charge to: MC Visa

Card # _____ Exp Date: _____

Signature _____

MAKE CHECKS PAYABLE TO AND MAIL TO:

Omega Innovative Marketing
1050 West Blue Ridge Blvd.
Kansas City, MO 64145-1216
Telephone (816) 942-6300
FAX (816) 942-6305
E-mail: OmegaIM@aol.com



Table of Contents

PREFACE	<i>iv</i>
I. PROLOGUE	2 - 9
II. EARLY AND LESSER KNOWN BREWERIES	10 - 25
III. BEER AND SODA	26 - 35
IV. GEORGE MUEHLEBACH BREWING COMPANY	36 - 61
V. DICK BROTHER'S BREWERY	62 - 69
VI. BRANCHES AND DEPOTS OF OUT-OF-TOWN BREWERIES	70 - 93
VII. ANHEUSER-BUSCH	94 - 121
VIII. FERD HEIM BREWING COMPANY	122 - 157
IX. JOSEPH SCHLITZ BREWING COMPANY	158 - 167
X. ROYAL BREWING COMPANY	168 - 181
XI. ROCHESTER BREWING COMPANY	182 - 193
XII. WM. J. LEMP BREWING COMPANY	194 - 209
XIII. IMPERIAL BREWING COMPANY	210 - 219
XIV. KANSAS CITY BREWERIES COMPANY	220 - 233
XV. PROHIBITION AND OTHER INFLUENCES	234 - 245
XVI. M. K. GOETZ BREWING COMPANY	246 - 269
XVII. BOULEVARD BREWING COMPANY	270 - 289
XVIII. BREWERIANA COLLECTING	290 - 293
ACKNOWLEDGEMENTS	294
BIBLIOGRAPHY	295 - 296
INDEX	297 - 300