

JUST FOR OPENERS

PO Box 64 Chapel Hill, NC 27514-0064 (919) 419-1546
Past Editors Don Bull (1979-83) Ed Kaye (1984-1988) Art Santen (1989-1993)

Membership Renewals / Annual Dues \$20.00

If the label on your Newsletter Mailing Envelope has an Expiration Date of 06/30/00, please pay your dues now. A membership renewal card should be enclosed. Other members please verify the expiration date shown on your mailing label. If you do not agree with the date please notify me.

P-16-6 Walter's Pueblo, Colo.

A recent purchase from Ebay. I was surprised to only have to pay \$65 with shipping. In the January 1990 JFO "Opener Trivia", Bill McKenzie had a drawing of the above opener with it being a P-16-UL. Instead of a new listing, I corrected the listing to reflect the wording as Bill showed in that article. For more Ebay sells check out "Opener Trivia" in this issue.

2000 Convention Lisle, IL (22nd JFO Convention) (April 26th to 30th, 2000)

The convention hotel Registration cutoff is April 12th. It is not too late to register. Also let Norm Jay know so he can plan for food and drinks accordingly. Call 1-800-233-1234 to reserve your room. Let the reservation person know you are with JFO. Norm has 40 registered members as this newsletter goes to the printer. Remember to bring a display for the general display contest and/or a single opener or corkscrew for the "Bill McKenzie Best In Show Award". For this display any opener or corkscrew is allowed with or without advertising. Don Bull will be bringing plenty of *Just For Opener* and *Soda Advertising Openers* books. Don't miss out on a great convention.

Convention Reminder List, Bring a Display !!!, Bring any and all Breweriana (any kind of beer advertising items), Bring Lots & Lots of Openers and Corkscrews!!!

Tentative Schedule	Wednesday	Arrivals and Room-To-Room Trading
	Thursday	More Arrivals and Room-To-Room Trading
	Friday Morning	Ebay Seminar and Display Contest
	Friday Afternoon	Convention Auction (Limit 5 Items)
	Saturday	Public Show (8-1) Jay Open House (2-6)
	Saturday Night	Group Dinner at Location to be Determined

Note we are trying something new this year. We will have the display contest (for the General Display and the Bill McKenzie Best In Show Award) on Friday morning before and just after the Ebay seminar. By following this schedule hopefully everyone can enjoy and have time to vote on the displays. Members are welcomed to also have their displays at their tables for the Saturday show. Take the time to share your collection even if it just a simple display.

2000 Convention Lisle, IL (22nd JFO Convention) (April 26th to 30th, 2000) (Continued)

The Hyatt has 14 floors and **our main floor is the 3rd Floor (you may need to get a room on the 2nd or 4th floors if we fill up 3)**, unless you require a smoking room (those floors are 1 & 9). If you do need a smoking room try to get on the first floor. Everyone else should make sure they are on the 3rd floor or if we do have an extra large turn out you might ask for the 2nd or 4th floors. The hospitality room will be at the end of the 3rd floor. These are extra large rooms with great panorama views of the surrounding countryside. You can request one of these rooms for an additional \$20 per night. **Remember the number is "3" (with "2" & "4" as backups).**

Directions 2000 Convention Lisle, IL (22nd JFO Convention) (April 26th to 30th, 2000)

The Hyatt Lisle is located at the intersection of Warrenville Road and Route 53.

From O'Hare Airport to the Hyatt Lisle

Follow the signs out of the airport to 294 South. Take 294 South to I-88 West. Follow I-88 West to 53 South. Exit 53 South and go through the first stoplight. The Hyatt Lisle driveway is on the right hand side.

From the Western Suburbs/Iowa to the Hyatt Lisle

Take I-88 East to Naperville Road exit. Make a left at the light. Make a right at the immediate light – Warrenville Road. Go 4 stoplights and then turn right into the Hyatt Lisle.

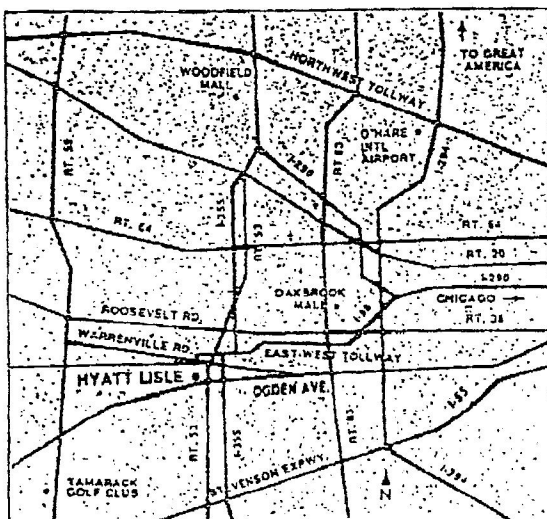
From South Suburbs to the Hyatt Lisle

Take I-55 North to I-355 North. Take I-355 to Ogden Avenue Exit. Make a left at the stoplight – Ogden Avenue. Take Ogden Avenue to the 53 North exit. Make a left at the stoplight and go ¼ mile. The Hyatt Lisle is on the left.

From the North Suburbs to Hyatt Lisle

Take I-90 to 53 South to I-355 South. Take I-355 South to Ogden Avenue and exit. Make a right at the stoplight – Ogden Avenue. Take Ogden Avenue to the 53 North exit. Make a left at the stoplight and go ¼ mile. The Hyatt Lisle is on the left.

Map for 2000 Convention Lisle, IL (22nd JFO Convention) (April 26th to 30th, 2000)



Inventors / Distributors

The Cantina
 Gluvli
 Chiller
 Bumby-Bik

CANTINA
Bar Products
1-800-519-5828
WWW.Barcall.com

Craig Lombardo
 CEO
 1-813-758-2277

Heather Snyder
 President
 1-813-610-1954

Tampa, Florida

21st Annual Blue-Gray Breweriana Show Fredericksburg VA (Feb 16-20)

The Blue-Gray show was going to be special this year. Gary Deachman was flying down to NC from New Hampshire and riding up with me to the show. Gary arrived Wednesday evening and we spent most of the time letting Gary check out my collection. Of course he liked any openers that were bottle shaped or had a bottle on them. His favorites were an A-22-1 Ballantine, A-38-5 U.S., and a C-2-2 Tech. I told him we had four days to do some trading. All he had brought for trade were a couple of shabby openers, an A-45-1 City Club and an A-47-1 Krug.

The next morning it took some time for me to be ready to leave town. I had to go by work and it was about 9:30 before we left for Fredericksburg. Stopping only for lunch we arrived at the show about 1:30. The Blue-Gray has grown very fast the last few years. What was a Friday to Sunday show has become a Wednesday to Sunday show. Seventy attendees had checked in on Wednesday so we were late in getting some of the good stuff. Before checking in Gary and I decided to go room-to-room. One of the first rooms had a P-145 A-B pearl handled knife in nice condition. Gary looked at it first but being the nice person I am, I helped him check it out and ended up buying it for \$100. The show was off to a good start.

Shortly after we went into Ken Ostrow's room and he had a B-2 Hornung with most of the red paint intact. Since Gary was reminding me about taking the A-B knife away I let him have first choice at the B-2 which he bought for \$65. Ken also had some Lancaster openers of which I bought two H-2s, and ended up paying him \$50 for a very nice L-2 A-B Malt Nutrine after trying hard to buy one on eBay. As we moved around we ran into JFO members, Larry Moter and Lou Sutton. Larry had gotten a few openers but was having a real good show selling general breweriana. Lou spent the afternoon looking for general advertising items but went home empty handed.

We were able to check into our room at 3:00. After getting settled in we made another tour of all 195 rooms at the Fredericksburg Holiday Inn Holidrome. Don Ray had come in from Nebraska and I bought several miscellaneous openers from him with the best being a F-20 Storz. That evening we went to local BBQ diner with Larry and his two friends. Food was pretty bad so for future reference we have a big "X" beside Allman's #2. That night we kept looking and Gary had some luck buying breweriana with bottles on it. His main acquisitions being matchcovers. About 9:00 Larry Moter and I spent about 30 minutes completing a trade. In this trade Larry got an E-3-70 Hazelwood, E-6-97 Chartiers Valley, E-8-113 Los Angeles, E-8-121 Old Colony, E-14-485 Crockery City, E-14-775 Cremo, E-23-2 Capitol, and an E-26-2 Mass. In return I received an A-29 Pepsi-Cola, B-32 Spiegel's Rest., E-5 Pepsi-Cola, E-6 Dr Nutt, L-2 Brotherhood Wine, M-26 Detroit Coal, N-79 Pepsi-Cola, and a P Cliquot Club. I turned in about 11:00 but Gary had run into some old friends from Colorado and wanted to hang out with them until 2.

Friday morning as usual is pretty slow time for the show. With most people sleeping in it is close to lunch time before most of the rooms open up. Regular attendees know that catching the "new blood", the afternoon arrivals, is where the good stuff will turn up. Gary and I went out on our own and he once again got some good bottle breweriana and I only found a couple of cheap openers. Late that afternoon Larry Moter made the big score when he caught a new arrival with a near mint E-26 Virginia and a rough B-7 Virginia. Luckily I have an E-26 in the collection but needed the B-7. As usual Larry and I had completed another "big trade" and now I would have to dig into my collection to get the B-7 Virginia. Besides those two he had also just bought a B-18-UL Beaver Valley. It was like having my teeth pulled but we completed a trade. I had to give up an E-4-313 Hittleman and an E-4-333 Globe plus throw in an E-8 Consolidated Bottling. My E-4 display took a big hit.

21st Annual Blue-Gray Breweriana Show Fredericksburg VA (Feb 16-20) (Continued)

All day Gary had talked about how we would do great at the next day's Saturday Public Show. I was hoping but the hopes for Gary went south when he decided to join the Friday Night (and that is all night) poker game. Saturday morning I got up about 5:15 and no Deachman in the room. I dressed and headed towards the lobby. Sure enough Gary and three other guys were still dealing. I watched for about 20 minutes and joined in for the final few hands. After 30 more minutes the game ended and I was lucky enough to win \$40 which was just about what Gary lost. After breakfast Gary was able to wander the show for a while before finally crashing in the room about 9:30. Several new sellers showed up but not much in the way of openers. JFO member Bill Arber walked in but I did not hear of anything nice except for Larry Moter finding a E-14-720 Burton. Lets just say Larry had a real good show. My best news Saturday was Fil Graff decided to let me have his A-47 Krug, which he had beaten me to by one hour at the 1996 Blue-Gray Show, for the \$100 price originally paid to Ken Ostrow. Fil proves that JFO members are just the greatest bunch of people to know.

The show went into the late afternoon with most of the table action stopping by 3:00. Gary had gotten up at noon after a couple hours of sleep and took another nap late in the afternoon. I had to wake him at 6:00 for the Saturday night banquet. The banquet food was so-so and afterwards Gary wanted to sing karioke in the hotel bar. He signed up but since there was a long wait he finally came back to the room. We turned in about 10:30. Sunday morning we were up and on the road by 8:00. Arrived back in Durham by noon just in time to watch the Daytona 500. After the race we checked over my latest eBay acquisitions that had come in the mail since we left. Gary even managed to talk me out of an A-38-5 United States. I went to bed early and had Gary at the airport by 6:30 the next morning. A nice show and a great time. With Deachman along it ain't never boring.

"A Little Wheeling-And-Dealing with Harold Queen by Ben Hoffman"

Trading openers isn't as fast as it use to be. During the bad weather we had, I rechecked my local openers and found I had some extras. I called Harold Queen to see if he would be around that I would like to see if he might need any of my extras.

Got to Harold's 1PM and showed him what I had to trade. He needed an A-28-12 Horlacher, B-18-484 Horlacher, B-18-595 Daeufer, B-21-320 Yuengling, C-52-1 Straub, and an A-13 White Garage (Non-Beer). By 5PM I got from Harold a B-5 CBO (Cigar Box Opener) from Weissport, PA., B-21-424 Howell & King, P-19-57 Ballantine, P-19-59 Narragansett, and an O-5 Sam Adams. I thought I wanted a little more so I talked Harold into throwing in a M-47-1 Arnholt & Schaffer. Trade completed 5:45 and we went for dinner. Thanks to Harold for sitting 5 hours at an auction to get the B-5 CBO from Weissport, PA. I think I had a good trade. (Editor's note: Anyone else wishing to report their trades please send them to me.)

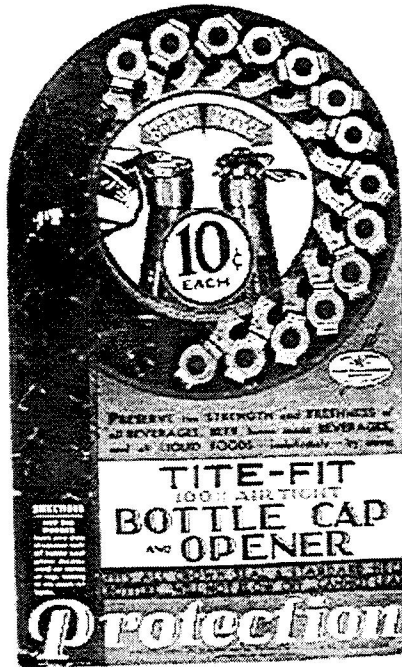
Spring Indianapolis Breweriana and Antique Show

Norm Jay, our JFO 2000 convention host, reported that the Indianapolis show was a little slow for openers. He did tell me between that show and the Milwaukee Bottle Show the weekend before he got the following, A-19-3 Gutsch, B-13-UL Charles Westerholm Iron Brew, B-22-47 Lemp, B-23-29 Terre Haute, E-14-694 Mankato, H-2-UL F. G. Klein Burlington, Wis., M-33-2 Jax all for his collection and he also got a M-3-8 Erie and a M-25 Brown-Forsman which are on the trading block. The A-19-3 Gutsch came walking in off the street at Milwaukee. Norm traded the guy some paper label bottles and the guy took it off of his key chain. You just never know.

Opener Packaging by Don Bull

Note: Don Bull will be attending the JFO meeting in April 2000 and would like to see any corkscrews and openers in original boxes that you can bring. Also if you have any point of purchase or counter top displays, bring them along.

Opener Packaging



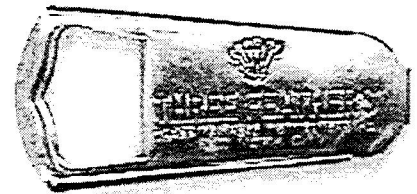
In *Just for Openers* and *Soda Advertising Openers*, Don Bull and John Stanley have included a number of opener types in original packaging. Bull is currently working on *Boxes Full of Corkscrews* and has photographed over 500 corkscrews in original packaging for this book. In the process, he ran across a number of openers in original packaging without beer or soda advertising and, therefore, they were not included in the Bull-Stanley books.

The "Tite-Fit" counter display has an opener / resealer that is similar to type N-10 patented in 1919. The openers are

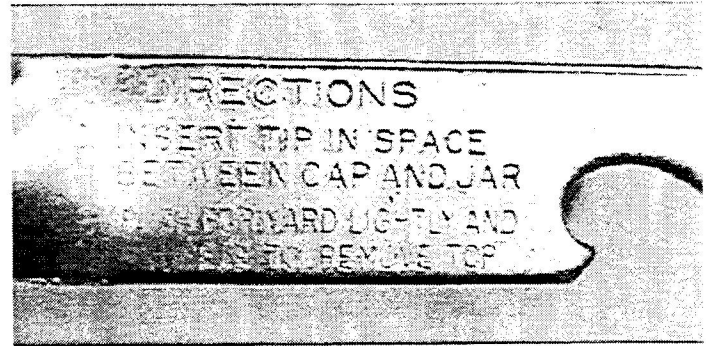
marked "Modern Metal Prods. Co., Cambridge, Mass."



The "Locktite" Bottle Stopper and Opener manufactured by Vaughan Chicago is type N-9 and has been found with beer and soda advertising. The Three Feathers Bottle Stopper and Opener is the same but it was private labeled for a New York City distributing company.

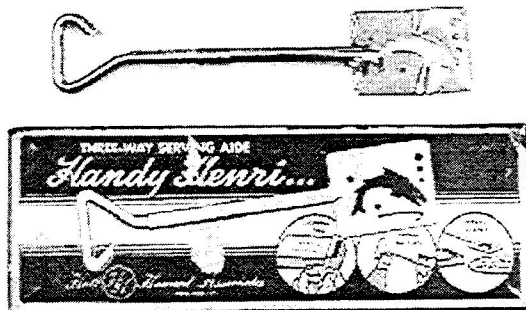


Opener Packaging by Don Bull (Continued)



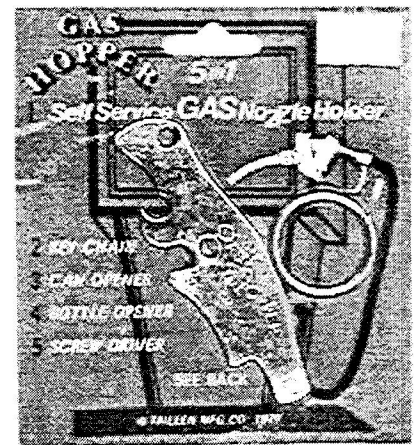
Stewart Product's "E Z Lift" cap-lifter has a conventional cap lifter and a spring loaded tool for removing lids of tins and bottles.

Directions are stamped on the opener itself: "1. Insert tip in space between cap and jar. 2. Push forward lightly and squeeze to remove top."



"Handy Henri" is from Holt Howard Associates, New York City. With this handy tool, you can open your bottle of beer then open your sardine can and serve up the contents.

The "Gas Hopper" is a 1979 copyright by Trileen Mfg. Co., Lexington, Virginia. The 5 in 1 tool is a gas nozzle holder, key chain, can opener, bottle opener, and screw driver.



To view more opener packaging go to
<http://www.bullworks.net/virtual/package/package.htm>

New Opening the WWW for Openers! By Pat Stanley

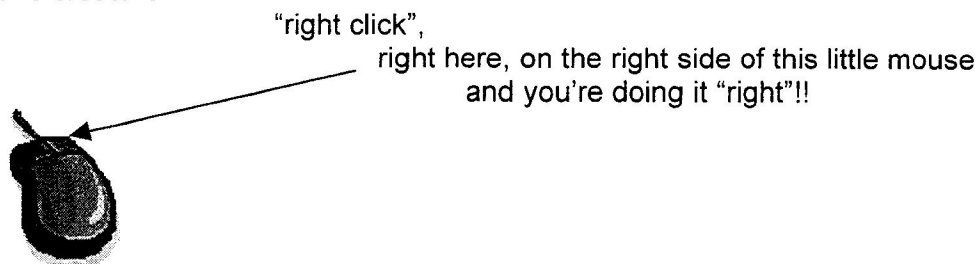
Tip #1 – How to “Right Click”:

In passing I hear John on the phone with members new to surfing. They've called to ask for help. Some have children who live nearby who are good resources; others struggle along. Some really desperate members try to figure out what on earth John is trying to describe over the phone, without seeing the descriptive waving of his arms, making perfect sense to himself.

And so, here I am, putting myself in the novice's seat, attempting to visually give you some guidance.

First thing you need to know, because we'll tell you to “right click”. I didn't use this shortcut for a long, long time. Now I wonder how I carried on without it. Sorry, lefties, you will have to flip this around or however you convert most of the directions in this world.

You see, this was awkward to me, as I use my right finger to click away on this mouse all the time. Well, “right click” means to “click” on the “right” side of the mouse. I'll be darn, there is another side to this creature!



See, it's easy!!

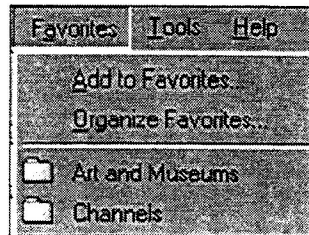
Tip #2 – How to Mark Your Favorite Web Sites

You really like the Just for Openers Home Page. It's a favorite, something you want to bookmark, because remembering all this “<http://www.just-for-openers.org/index.html>” is just too much. After all, you need to save all your memory cells for opener trivia.

Now what I tell you, varies depending on what internet service you are using. Mindspring, aol, etc. are internet *providers* and they connect to Internet Explorer or Navigator, internet *services*.

If you are using Internet Explorer (IE), and you click on “favorites” on the tool bar, you will see two options, (1) Add to Favorites and (2) Organize Favorites. Below that you will see a lot of folders that IE set up for your use, with some favorite sites already added, like Disney (someone we have not seen at JFO for too long, would like that site, Lou Kovarik's wife...Rosemary).

Opening the WWW for Openers by Pat Stanley (Continued)
--



If you select “Add to Favorites”, you can store the JFO web site (url) in any of the existing folders. You just select the one you want, after you pick “Add to Favorites”.

John has a folder that is absolutely overflowing with favorites. The name of his folder is “Openers” and IE had not set that one up with the software.



You too can have an Opener folder, and this opener doesn’t cost a thing. You can create it by either the “Add to Favorites” option or the “Organize Favorites”. Explore a little, look at the two options and see what they offer. Like going to a flea market, rummage around and you will quickly move up from novice to intermediate surfer.

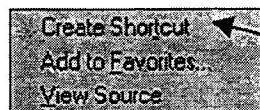
In Navigator, instead of “favorites”, they use “bookmarks”. Check it out and I’m sure you can start accumulating web sites.

Tip #3 – How to Create an Icon to Go to Your Favorite Web Sites

Hey, we haven’t even used right click yet!! Ok, ok...you had to practice some first!!!

So you’re addicted to eBay....you go there everyday!!!

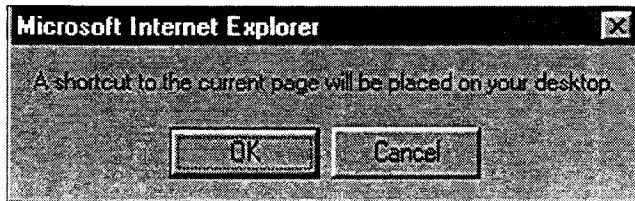
- Go to the eBay site, www.eBay.com.
- “Right Click” and you will get a long drop down list. About half way down, you’ll see “Create Shortcut”.



Select “Create Shortcut” ‘cause time is ticking and we got to take all the shortcuts we can clicking!

Then you will get this message:

Opening the WWW for Openers by Pat Stanley (Continued)



Select "OK".

Where's my desktop? Is something going to pop out on my antique roll top? No!!

Your desktop is where all the little pictures (icons) are located that you double click on to open whatever you want to use or see. Here's two important ones in our house. Guess which one is mine? Yes, I get to Mary Kay by clicking on the tree, because I need a money tree to support what's above it, "eBay"!!!



You must have your internet service open before you can click on this icon or you will get this message:



The page cannot be displayed

I still find it easier when I'm out on the web, to go back to the desktop and click on my icon, then scroll through my favorites, as my lists are pretty long too, filled with where to get free greeting cards, dog shampoo, my sister's web site, etc.

Well, that covers some of the questions John is asked. Now, I must work on a bigger handout for John's presentation at JFO April 2000 in Chicago. (Pat will be available to answer any computer questions at the convention. She is the real expert in the family).

Collectors Are Flocking To Online Auctions

In the last issue on page 13, an Ebay write-up appeared. Harold Queen wrote to tell me that Kate Delhagen who is quoted in the article grew up in Jim Thorpe, PA (Harold's home town and current address). Her father is a stockbroker in Allentown. Boots and Harold were good friends with the family who lived about a mile away. Her parents were always talking about their "Katie". She was an outstanding athlete in high school. Small world!

Spouse's Corner

by Pat Stanley, the Editor's Spouse

It's quite early for me to be pounding away on the keyboard; so early that John is still awake! However, this unusual time for composure may end if thunder storms looming nearby come too close to dare leave the computer on.

This evening we go down memory lane to the newsletters for July and October 1981, then I'll draft my plan for the "index" for all issues, working closely with these issues to get started. Yes, it is quite overwhelming, even for someone who thrives on organization.

The first line of the July '81 issue brought some laughter, "They keep turning up...28 new discoveries in this issue. How many different types are there?" Time has told "most of the story".

Cardone's auction results were reported more specifically to indicate the average price of \$4.78 for beer advertising opener lots compared to \$2.86 for the non-beer advertising ones. Guess that's why I hear John ask people who call, certain they have something really rare that Mr. Stanley would die for, "is there a beer advertisement on it?".

The P-7 is mentioned, as a knife with bottle opener with a piercer that bends or punctures the cap so as to "render it worthless and certainly not reusable". Hear the sad sigh from cap collectors?

One of the discoveries in this issue is one that is very dear to us, the A-41 Medford Lager Beer, a figure of a dog. This was the inspiration for the convention openers for 1990 and 1991 when yours truly hosted those conventions in North Carolina. Janice Jarrell crossed switched 5 dachshunds in '91.... three for display awards, one for herself and one for me to remember all the great times we had preparing for those conventions. The sequenced dog collar I wore as I barked to announce the arrival of three huge warm banana puddings to extend "Southern Hospitality" hangs above me, sewn to fabric and framed, another reminder of fun times. Janice separated 36 eggs for me that evening for that pudding (which includes removing every little white stringy shock absorber). I took the Jarrells to the airport at 6 a.m. this morning, still trying to pay her back for that enormous favor a decade ago!

Oh my, I'm rambling, but don't we all as another convention nears and we anticipate the time to be spent with friends?

As hundreds of additions were coming in, Ed Kaye agreed to take on the job of putting all this information in a composite and cross checking for duplicates and accuracy of reporting.

There was a supplement to the July 1981 issue to share scenes from the 3rd Annual Opener Convention in Missouri, hosted by Bob Chapman. The Holiday Inn announced the convention at their entrance as "Welcome Beer Opener Con". "No one was able to figure out who the sign was referring to!!!" 28 collectors from 8 states attended. Hey, that was the # of new discoveries in the July issue. Did everyone attending submit one? (Sorry, accountants live in a different world of trivia.) 14 visitors dropped by to see if people really do collect openers. They probably still don't believe it!!

Spouse's Corner (Continued)

Ollie was pictured with a caption that he took "a few minutes to explain why people collect openers, when to collect them, how to collect them, and where to collect them." The article didn't give the answers, so here's mine: They collect openers because they still can't open a pull tab without breaking it off before it opens the darn can. They collect them 24 hours a day; any way they can, legal or illegally; anywhere they can....can, can, can collect bottle or can openers.

As the October 1981 issue rolled around, Ed Kaye was working hard to complete the additions for the January issue and was planning a composite catalog of openers, rather than all the separate additions issued. The project was scheduled for completion late 1982. Eileen probably had lots of time to work on Christmas crafts.

Five women had been arrested for stabbing a teen with a can opener when they almost collided with his car in a parking lot and a fight started. It's very painful for me to include that in my summary.

The same month of the stabbing, there was an article about Ernie Frazee (remember that name for "Who Wants to be a Millionaire"). After playing baseball on a hot day, he couldn't find a "church key" to open a cold soft drink, so he vowed to find a better way. Note, this was started for pop, not beer. Pittsburgh Brewing Co., makers of Iron City Beer, tested his lift top. It really was a double innovation, as the aluminum top that replaced the all-steel tops could double the shelf life of the can's contents. Iron City sold 100 million cans of beer within 5 months, compared to their previous average of 18 million per year. Schlitz asked for one billion tops, while predicting it was a fad that would last only a year or two.

The remainder of this issue impressed me from a marketing standpoint. We didn't have MBA Schools all over in those days, and yet their marketing slogans caught my eye. The M-3 "PrestOpener" was promoted "if you want to put an army of walking "ads" to work, this unique, disappearing bottle-opener, etched and enameled in color, will serve you loyally." "Whenever they push the button, they also push your brand." Earl Products announced "At Last!". "Here's a TERRIFIC Advertising Specialty Premium Designed Solely for the BREWING INDUSTRY". Their opener wouldn't "tear your pocket" and "lasts forever". Sealrite's main business was to sell Crown Corks. Openers were only a leader. That is why they offered them so low a price. They said that "once a woman used a Metalic Opener, she will have not other, because it works so easily".

Erie Specialty Co. manufactured Walker's Self-Pulling Cork Screws, so easy "A child can do it". Their product covers the greatest variety of work of any Cork Screws made, therefore it was the "best advertisement". Another ad for Walker's, included the catchy phrase, "emboss your card on openers". Williamson's Power Pocket Corkscrew was "made for advertising, costs less than a dime". (Not today.) The Original Picnic bottle opener had a square hole that was an emergency Prestolite Wrench. Now, I've known for sometime that you could use it to turn on old timey headlights. I didn't know the proper term "Prestolite Wrench". I do hope I can remember that!!! But don't test me, I'm not John, the one with the photographic mind, at least when it comes to openers!

A.W. Stephens Mfg. produced a combination for which they claimed, "One of these Openers hung up in the kitchen beats a hundred of the other kind scattered on the cellar floor." Now wouldn't you JFO members like to see that cellar floor. Odds are that some of those would beat the Stephens prize.

Spouse's Corner (Continued)

Crown Cork and Seal advertised that it was time to order openers for your Christmas trade; that the demand for the "Oriole" (E-9 wire opener) was *outdistancing* anything they had ever seen in opener ordering; that it would be thoroughly appreciated by their *discriminating* trade. Another one of their ads said they were working day and night to fill the demands for the "Oriole" openers. Vaughan claimed their openers never chipped, never slipped; that "even in bottle openers, quality counts".....yes it does!!!! Especially several decades later. Vaughan said their openers were first choice.

The point at the top of the D type opener had been identified as a wire breaker. John Horn "pointed" out that this was a "loop seal remover" and a picture in the October issue confirmed his contribution. JFO was needed, so members could share information.

The issue concluded with an article about type S-1 bottle - bottle openers. It's a good thing I've seen one, as the print on this page was just too small for me!

At this point, my corner is not too small, so I best draft my index format for John's review in the morning. You guessed it. He's dreaming about openers again and heading to Chicago!!! I do wish that he will put the new window shades on my car for this composition from my heart!!!

Sample of the Index Format
By Pat Stanley

Please take some time to review the categories below and the format of this Sample Index. Once the Index is completed, it can be sorted up to three levels, such as first by type, then Category, then Detail 1. Those without a computer may request a hard copy of the file sorted as you wish. Those with a computer may request a diskette. If possible, it will be placed on a web page. There will be a small charge to cover the cost of the paper or diskette and postage.

Could you get the information you'd like from the categories and format below? It's easier to make changes in the design now rather than later, so send your comments to John and he will pass them along to me! (or tell me in Chicago!)

Categories:

Advertisement	B/S/T Convention	B/S/T Visits	Fakes	Member Picture	Patent Info
Awards	B/S/T eBay	Cartoons	Gradings	New Discovery	Publication Feb 2000
B/S/T Antique Store/Mall	B/S/T Show	Cross Reference	Member Article	Opener Trivia	www

Sample Index:

Just for Openers Index through MMMYYYY Issue							
(Sorted by Type, Category, Detail 1)							
Date of Issue	Pg	Type	Value Quoted	Brewery/Inscription	Category	Detail 1	Detail 2
1999 Jul	27,28	A-009		Baseball Players	Awards	3rd in Display	Kaye, Bob

Just for Openers Index through MMMYYYY Issue							
(Sorted by Type, Category, Detail 1)							
Date of Issue	Pg	Type	Value Quoted	Brewery/Inscription	Category	Detail 1	Detail 2
1999 Jul	27,28	A-009		Baseball Players	Awards	3rd in Display	Kaye, Bob
1981 Jul	2	A-018			Cross Reference	See A-042	
1999 Apr	3	A-029		Dr. Pepper Spinner	B/S/T Show	Moter, Larry	Stanley, John
1999 Oct	13	A-035-018		Walla Walla	B/S/T eBay	Stanley, John	
1981 Jul	2	A-041		Medford Lager Beer	New Discovery	Murphy, Fouch, Neuser	
1981 Jul	2	A-042		Franklin Brewing Company	Cross Reference	See A-018	
1981 Jul	2	A-042		Franklin Brewing Company	New Discovery	Murphy	
1981 Jul	1	A-042	25.12	"Drink Gold Top, Old top, that's the beer"	Price	Herb Ashendorf auction	
1999 Apr		A-054-001		A-B	Fakes		
2000 Jan	8	B-001-035		Breidts	B/S/T Visits	Deachman, Gary	Stanley, John
1981 Jul	1	B-004-006	26.17		Price	Herb Ashendorf auction	
1996 Jul	10	B-022-050		Renner & Weber	B/S/T Convention	Sherman, Don	Stanley, John
1981 Jul	1	D-006-001	9.15		Price	Joe Cardone's auction	
1981 Oct	4	I-024		PorEzy Patd.	Advertisement	Air Scale Company	
1999 Oct	13	M-003		Osterstyoock Beer Easton Pa	B/S/T eBay	Art Johnson	
1995 Jul	28	M-003-035		Duquesne	B/S/T Antique Store/Mall	Stanley, John	
1996 Jul	10	N-001-UL		Walters	B/S/T Convention	Sherman, Don	Stanley, John
1981 Jul	1	P-007			Patent Info	Patent Date April 30, 1901	
1995 Apr	4	P-008		Hund & Eger Pabst Beer	Opener Trivia	Drawing	
1999 Oct	13	P-016-001		Narragansett	B/S/T eBay	Highest Bidder	
1981 Oct	2				Cartoon	Hagar the Horrible	
1999 Apr	5				Gradings	Definitions	
1999 Oct	7				Member Article	Cartwright, John	BCCA
1998 Oct	5				Member Article	Hibbeler, Ollie	ABA
1998 Oct	11				Member Article	Stanley, John	NABA
1999 Oct	3				Member Article	Stanley, John	ECBA
1981 Jul	5				Member Picture	Group	
1981 Jul	4				Member Picture	Kaye, Ed	
1981 Jul	1		4.78		Price	Average Cardone Auction	Beer Openers
2000 Jan	Attac h			Soda Advertising Openers	Publication Feb 2000	Bull, Don	Stanley, John
2000 Jan	1			www.iust-for-openers.org	www	JFO Web Site	

"Opener Trivia"

From the last issue Thom Thompson, Vic Kroll and John Fisher all three responded about the origins of Blutwine. Both Vic and John researched on the internet while Thom sent in some old articles he had on file. Thank you for doing this and sharing the information with other collectors. Their results are told later in this article.

Ebay remains my main avenue for acquiring good openers. Since the January issue, I have acquired the following:

A-003-999 Derby City	\$13.00
A-005-UL Stone Malt	\$27.00
A-009-001 Buffalo	\$53.00
A-013-006 Lemp	\$50.00
A-013-019 Gund	\$70.00
A-021-UL Stegmaier	\$14.00
A-029-058 Schlitz	\$17.00
A-035-004 Buffalo	\$34.00
A-042-021 Fisher	\$23.00
A-050-001 Arcadia	\$30.00
B-002-031 Heim	\$63.00
B-014-999 1934 Chicago	\$10.00
B-014-999 Dr Spicer	\$18.00
B-017-001 Buffalo	\$50.00
B-017-012 Stroh	\$34.00
B-018-564 North American	\$18.00
B-018-999 Lime Cola	\$10.00
B-019-999 My-Coca	\$40.00
B-021-168 Indian	\$13.00
B-021-452 Indian	\$13.00
B-021-478 Clearfield	\$27.50
B-022-UL Utah Brewing	\$111.00
B-023-070 Hornell	\$27.50
B-023-145 White Rose	\$7.00
B-023-145 White Rose	\$23.00
B-053-001 Gipps	\$35.00
B-999-999 Coca-Cola	\$61.00
C-011-001 Conn Valley	\$12.00
C-011-999 Coca-Cola	\$28.00
C-011-UL Gunthers	\$12.00
C-012-166 Fox Valley	\$6.00
C-018-UL Stoneys	\$8.00
D-007-001 Peru	\$10.00
E-007-999 Collins Bros	\$10.00
E-007-999 Seitz Mineral	\$12.00
E-014-775 Cremo	\$23.00
E-014-UL Spearman	\$30.00
E-023-UL Walla Walla	\$20.00

E-030-001 Salt Lake City	\$41.00
F-006-UL Zynda	\$30.00
F-027-999 Coca-Cola	\$80.00
F-027-999 Coca-Cola	\$80.00
G-001-999 Buster Cola	\$4.00
H-002-099 Budweiser	\$12.00
I-007-081 Union	\$30.00
I-009-002 Fox Deluxe	\$12.00
M-003-999 1934 Chicago	\$22.00
M-006-004 Pennsy	\$37.50
M-019-002 Miller	\$23.00
M-019-999 Shasta	\$30.00
M-089-001 Budweiser	\$15.00
M-999-999 Chicago 1933	\$35.00
N-009-999 Panama Coca-Cola	\$6.00
N-009-UL Arcadia	\$20.00
N-026-003 Columbia	\$14.00
N-027-UL Lone Star	\$22.00
N-088-001 Dixie	\$22.00
N-100-UL Lone Star	\$150.00
N-501-999 Chero-Cola	\$38.00
N-502-001 Chero-Cola	\$63.00
O-999-999 Lime Cola	\$18.00
O-999-999 Sun Spot	\$25.00
O-999-999 Whistle	\$70.00
P-002-008 Greenway	\$80.00
P-016-006 Walters	\$66.00
P-018-001 Arnold	\$55.00
P-070-001 Minneapolis	\$210.00
P-087-999 Alberta	\$50.00
Z-Wausau (10 Openers)	\$43.00

Most at or near retail and then I went just a little overboard on the B-22-UL Utah Brewing. I am not getting any younger and the chase becomes tougher.

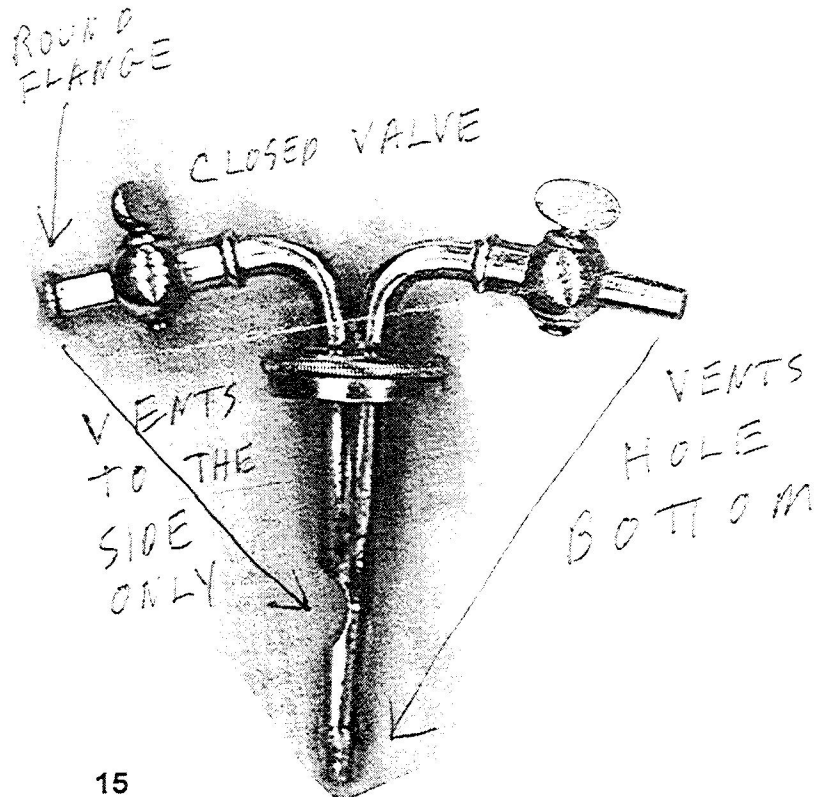
"Opener Trivia" (Continued)

A-009-017 Schells	\$100.00
A-013-002 Schells	\$161.50
B-001-014 Jenner	\$124.25
B-005-UL Palouse	\$66.01
B-018-UL Loyalhanna	\$305.00
B-021-571 Millstadt (DMR)	\$90.00
B-053-001 Gipps	\$63.69
E-014-679 Reisch	\$23.25
E-017-010 Salt Lake City	\$61.59
F-002-010 Wacker	\$48.50
F-005-999 Dr Pepper	\$215.63
F-418 Winking Boy	\$1,151.99
G-025-001 Schlitz	\$152.51
K-012-001 Lone Star	\$104.03
L-004-018 Ruppert	\$75.25

M-003-999 Dr Pepper	\$182.50
N-027-002 Hamms	\$87.03
O-005-011 Acme Beer	\$103.51
O-005-023 Regal Pale	\$372.20
O-005-039 Schlitz (Rusty)	\$406.88
O-005-999 Climax	\$35.99
O-005-999 Climax (MIB)	\$88.97
O-005-999 Glasgo Cooler	\$338.23
O-005-999 Orange Crush	\$177.70
O-999-999 Black Horse Ale	\$200.00
P-060-002 Loyalhanna	\$250.00
R-006-002 Sprenger	\$550.00
Z-001-001 Crema (MIB)	\$60.25

Additional Ebay sales are shown above. Please do not let some of the high prices fool you. Remember how the O-5 Climax brought \$335.00 recently. Now it is all the way down to \$35.99. The B-18-UL Loyalhanna was a real shocker. There were 4 miscellaneous openers with this one and the best one was a \$10.00 A-35 wine advertising opener from PA. The high bidder was a serious Rolling Rock collector. The stiffest competition for openers will usually come from local collectors. The B-21 Millstadt did not meet reserve. The seller wanted \$90.00. Maybe B-18s, B-19s, B21s and B-22s are shooting up in value. Ones from small obscure breweries are good investments. The two Schell figurals are probably a little over priced but in today's market, defining over priced is tough.

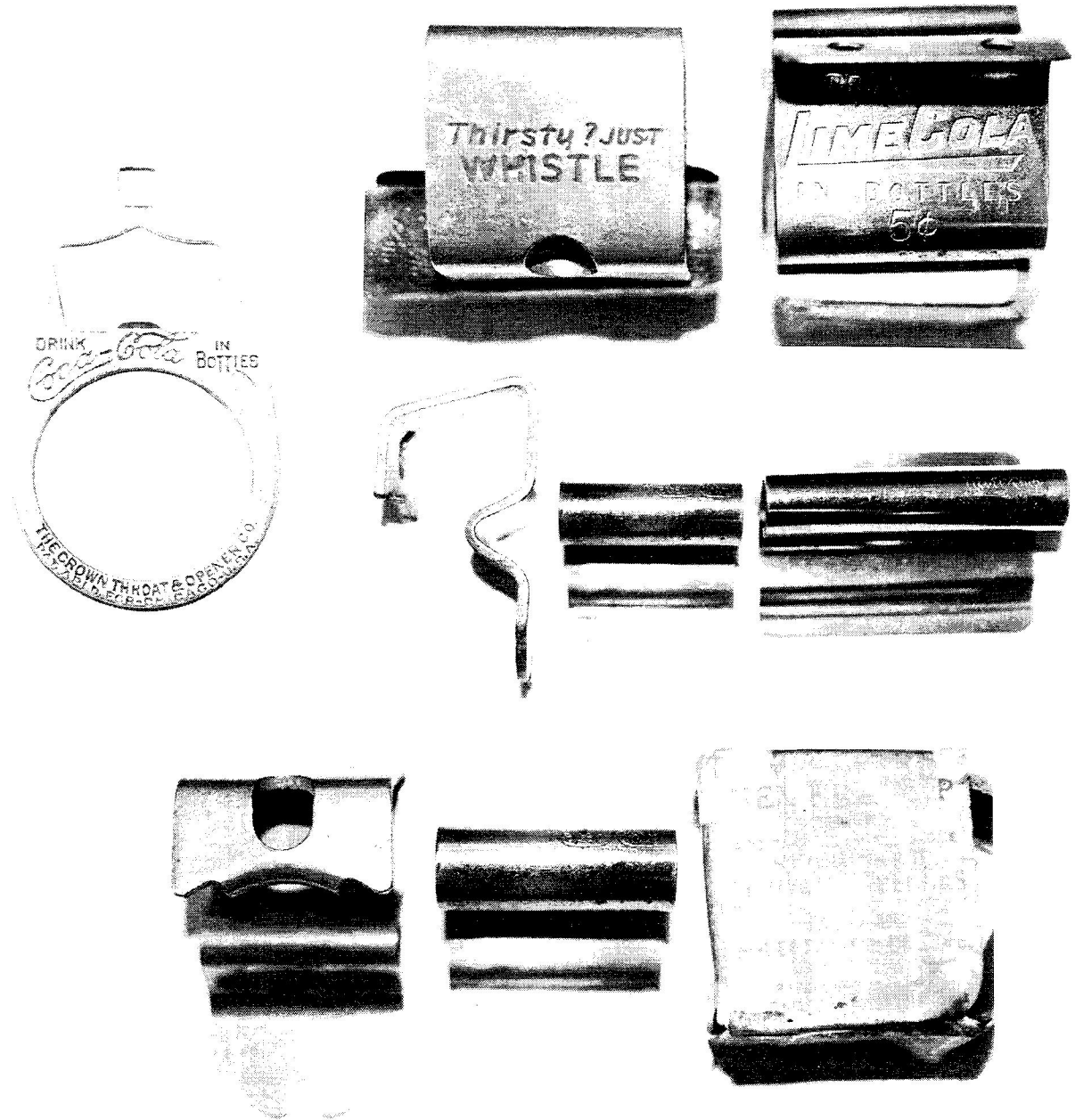
Art Santen wants to know what the item at the right was used for. Looks like a champagne tap to me, but I will give way to the corkscrew experts? Or maybe it should be bottle expert?



"Opener Trivia" (Continued)

I did go wild and bid \$113.00 on a B-18-UL North Pacific Beer from Astoria, Ore. But when the local collector wants it and this case they did, I lost out at \$116.00. Tough opener and a lot of money for a B-18. I think it was gold-plated come to think of it. Opener prices are not going down.

Below left is the B-999-999 Coca-Cola. I have only seen this style one time marked "Vaughan's Universal". I was very surprised to only pay \$61.00 for this opener. Like the "Vaughan's Universal" it is also marked "The Crown Throat & Opener Co. Pat. Appld. For. Chicago". To the right are three different views of the 2 new "O" styles not in the *Soda Advertising Book*. The Whistle wall mount does not have any markings, while the Lime Cola wall mount is just like an O-4 but only half as wide. An O-4 was Vaughan's Never Chip Model #1 and this opener is Vaughan's Never Chip Model #2. In the second picture it is shown with an O-4 for comparison. The bottom picture shows the original box it came in.



"Opener Trivia" (Continued)

As mentioned earlier I had a "flood" of response about the B-14 Bludwine opener owned by Lew Burritt. Thom Thompson sent the most information followed by Vic Kroll and John Fisher. Thom had information in his soda history files while Vic and John used the internet. Thom's information shows that Bludwine was originated in Athens, GA In 1906. The formula was sold to bottling companies and many of these companies sold other soda products. One of the interesting aspects of this soda was its distinctive bottle. It was called a "Hobble Skirt Bottle" and predates Coca-Cola's famous "Hobble Skirt Bottle" by at least 5 years. The Bludwine bottle was embossed with their design thus discouraging other brands from "pirating" their bottle. Bludwine lasted until the 20's but its exact date of demise is not known.

Vic and John found information about various bottling companies of Bludwine including plants in Dallas, TX, Sumter, SC and the Empire Bottling Works of Butts Count Georgia. The Empire Bottling Company was most interesting because of a 1909 local newspaper article. The company was started in 1908 and in the article stated, "that Empire had exclusive manufacture and sale in this territory of Bludwine and Wiseola, two very popular drinks. What beer is to the Germans and ale to the English, soft drinks are to Americans. That is in certain states where the legislatures have recently been in action" (passing Prohibition laws). The article concludes with, "The cases of soft drinks were distributed by wagon." Thank you Thom, Vic, and John for your contributions. Below is a Bludwine letterhead with a "Hobble Skirt Bottle".

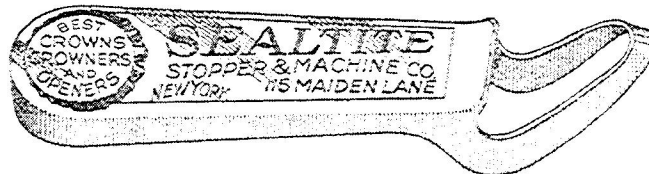


Above is a knife and celluloid pin that recently sold on Ebay for \$175.00 The knife confirms that the B-9 Corbin opener shown in the last issue is from the Corbin Manufacturing Company of New Britain, Connecticut. It was a little high priced for me to go after.

“Opener Trivia” (Continued)

Finally Don Bull told me about this nice ad being sold on Ebay for a G-5 “Sealtite” bottle opener.

SEALTITE “METALLIC” CROWN OPENER
BEST ADVERTISING MEDIUM FOR BOTTLING TRADE



This is really a household opener, because it is so easy to use. Unique and serviceable. Everybody will keep it—Lasting and inexpensive advertising. Try your hand at filling one of the blanks below and our die cutter will furnish a finished design when we get your idea. Where we furnish a sketch kindly criticise it very carefully and return to

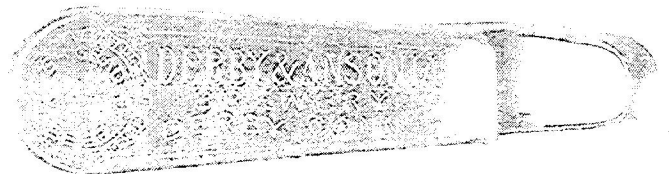
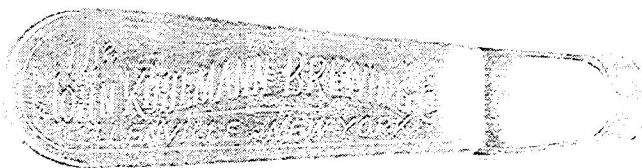
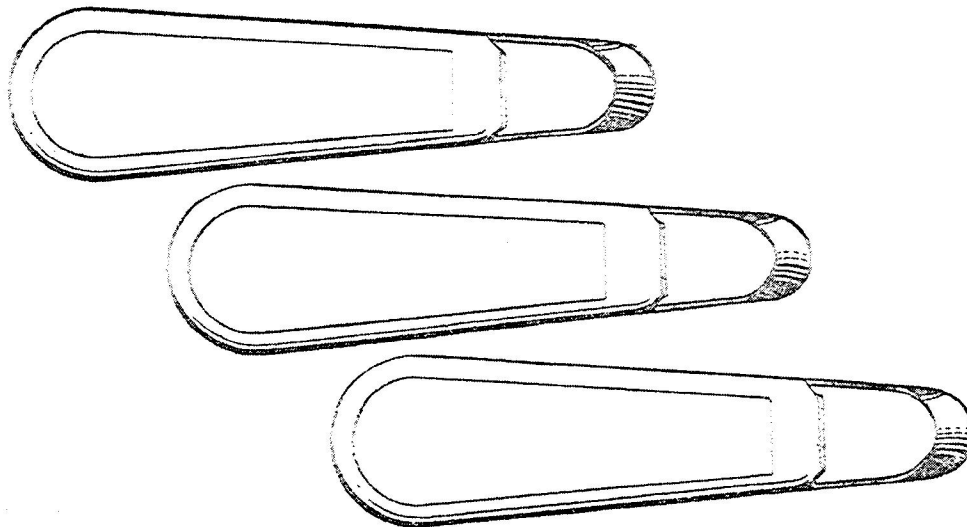
SEALTITE STOPPER & MACHINE CO.

115 Maiden Lane,
NEW YORK CITY

Faithfully Yours,
Wm. J. Canella

President

We show exact size of advertising space—the plainer the design and fewer the letters, the more effective the result.

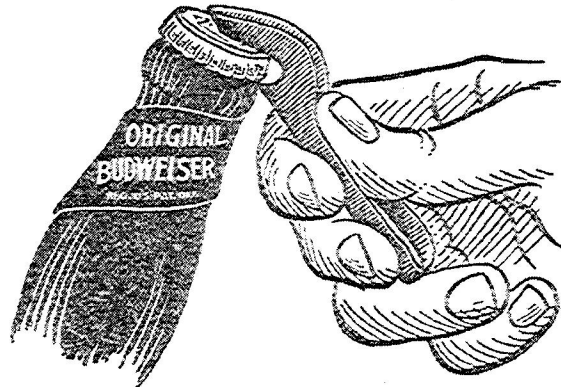


“Opener Trivia” (Continued)

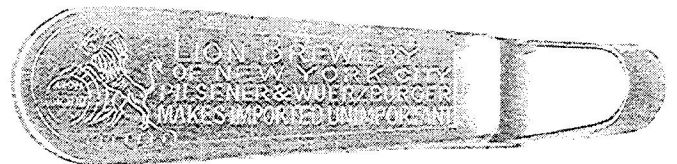
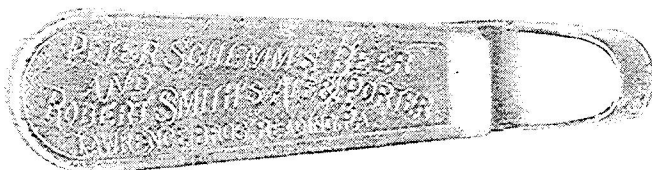
This ad is very interesting in that the customer just drew his design and returned it to the Sealrite Stopper & Machine Co. of New York City.



Destroys the Crown



But Never Chips the Bottle



The Just For Openers Membership Directory (321 Members)
--

Many thanks to JFO members who helped to bring in new members during 1999. If any information is wrong please notify me. The following table is a quarterly breakdown of when membership numbers were issued followed by a table of States & Countries.

Jan 79 (1-85)	Oct 84 (386-387)	Apr 89 (518-525)	Jan 95 (689-705)	Apr 99 (899-912)
Apr 79 (86-143)	Jan 85 (388-396)	Apr 90 (526-548)	Apr 95 (706-720)	Jul 99 (913-920)
Jul 79 (144-165)	Apr 85 (397-405)	Jul 90 (549-560)	Jul 95 (721-734)	Oct 99 (921-937)
Oct 79 (166-178)	Jul 85 (406-410)	Oct 90 (561-565)	Oct 95 (735-749)	Jan 00 (938-949)
Jan 80 (179-185)	Oct 85 (411-414)	Jul 88 (501-510)	Jan 96 (750-763)	Apr 00 (950-961)
Apr 80 (186-191)	Jan 86 (415-444)	Jan 91 (566-567)	Apr 96 (764-778)	
Jun 80 (192-194)	Apr 86 (445-454)	Apr 91 (568-574)	Jul 96 (779-795)	
Jul 80 (195-200)	Jul 86 (455-456)	Jul 91 (575-583)	Oct 96 (796-808)	
Jan 81 (201-228)	Oct 86 (457-460)	Apr 92 (584-602)	Jan 97 (809-814)	
Jan 82 (229-296)	Jan 87 (461-473)	Jul 92 (603-618)	Apr 97 (815-825)	
Apr 82 (297-314)	Apr 87 (474-477)	Apr 93 (619-633)	Jul 97 (826-832)	
Jul 82 (315-326)	Jul 87 (478-484)	Jul 93 (634-640)	Oct 97 (833-837)	
Oct 82 (327-329)	Oct 87 (485-488)	Oct 93 (641-647)	Jan 98 (838-856)	
Jan 83 (330-342)	Jan 88 (489-496)	Jan 94 (648-658)	Apr 98 (857-873)	
Jan 84 (343-365)	Apr 88 (497-500)	Apr 94 (659-669)	Jul 98 (874-881)	
Apr 84 (366-376)	Jul 88 (501-510)	Jul 94 (670-676)	Oct 98 (882-889)	
Jul 84 (377-385)	Oct 88 (511-517)	Oct 94 (677-688)	Jan 99 (890-898)	

Arkansas 1	Idaho 2	Missouri 17	Pennsylvania 25	West Virginia 1
Arizona 9	Illinois 21	Montana 2	South Carolina 2	
California 29	Indiana 7	North Carolina 7	South Dakota 3	
Canada 9	Kansas 4	Nebraska 5	The Netherlands 1	
Colorado 6	Kentucky 3	New Hampshire 1	Tennessee 3	
Connecticut 5	Louisiana 3	New Jersey 8	Texas 10	
England 1	Massachusetts 7	New Mexico 1	Virginia 11	
Florida 14	Maryland 8	New York 21	Vermont 2	
Georgia 2	Michigan 12	Ohio 12	Washington 4	
Iowa 6	Minnesota 11	Oregon 2	Wisconsin 23	

JFO Conventions (# & Dates, Location, Host/s)					
(01) 1979 August 18	Trumbull CT	Don Bull	(16) 1994 April 28-30	Reading PA	Ben Hoffman
(02) 1980 April 19	Hazelwood MO	Ollie Hibbeler	(17) 1995 April 20-22	Saint Joseph MO	Don Whelan
(03) 1981 April 24-25	Hazelwood MO	Bob Chapman	(18) 1996 April 24-28	Chicago (Lisle) IL	Norm Jay
(04) 1982 April 22-24	Indianapolis IN	Joe Balaban	(19) 1997 April 23-27	Buffalo NY	Mark Barren
(05) 1983 April 21-23	Indianapolis IN	Joe Balaban	(20) 1998 April 22-26	San Francisco CA	John Cartwright
(06) 1984 April 26-28	Denver CO	Gary Deachman Bill McKenzie	(21) 1999 April 21-25	Naples FL	Bob McNary Art Johnson
(07) 1985 April 25-27	Denver CO	Gary Deachman Bill McKenzie	(22) 2000 April 26-30	Chicago (Lisle) IL	Norm Jay Bob Stahly
(08) 1986 April 24-26	Fort Myers FL	Ed Kaye	(23) 2001 April 18-22	Saint Joseph MO	Don Whelan
(09) 1987 April 23-25	Chicago (Alsip) IL	Larry Biehl Fil Graff	(24) 2002 April ???	Fredericksburg VA	Larry Moter
(10) 1988 April 21-23	Saint Louis MO	Vic Keown	(25) 2003 April ???	Volunteers	
(11) 1989 April 20-23	Frankenmuth MI	Herb Danziger Lehr Roe	(26) 2004 April ???	Volunteers	
(12) 1990 April 26-28	Durham NC	John Stanley	(27) 2005 April ???	Volunteers	
(13) 1991 April 25-27	Research Triangle Park NC	Roger Jarrell John Stanley	(28) 2006 April ???	Volunteers	
(14) 1992 April 23-25	Fort Mitchell KY	Tom Zruno	(29) 2007 April ???	Volunteers	
(15) 1993 April 29-May 1	Fort Mitchell KY	Herb Haydock	(30) 2008 April ???	Volunteers	

Gripes Uncorked by John Sappington (continued on Page 25)

Gripes Uncorked

Would new closures on wines be considered a screw-up?

Story by John Sappington



Sometime in the not-too-distant future, fine wine producers likely will give up on corks — not all at once and not altogether, but for the most part. Wine/cork is a marriage that has lasted four centuries.

For all but the past few decades, cork has been the best available material. It provides a light, flexible, airtight, nonreactive seal, critical for wines such as fine Bordeaux and cabernet sauvignons that require years of bottle aging. In fact, for this specific use, cork probably is still the best stopper available.

However, the disadvantages of cork as a seal are its tendency to taint wines; the fact that it requires a special tool, the corkscrew, for removal; and,

finally, its expense. Estimates of the number of bottles contaminated by bad corks have shot up in recent years from 2 percent to 10 percent or more. Ironically, a modern sanitizing process in which the corks are bleached with chlorine seems to be contributing to the problem, since the chlorine can react with phenol, a compound found in the cork. The result is a chemical that produces a strong, immediately recognizable odor of musty, wet cardboard and ruins any chance of enjoying the wine.

The cork industry has responded by experimenting with other cleaning agents, like hydrogen peroxide, but complaints continue to mount, the more so as wine becomes more expen-

sive. But even if cork producers could eliminate the problem of bad corks, there's still the corkscrew issue, one that is not addressed by the plastic "corks" many wineries already have adopted. What is for many wine drinkers a satisfyingly quaint routine, a link to tradition, is for many more consumers and would-be consumers a frustrating, unnecessary bit of foolishness that embodies the stuffiness and snobbery associated with wine drinking. One more reason not to drink wine.

Were it not for its association with cheap wine, liquor and soft drinks, many fine winemakers might have switched to a screw top years ago. The tops are perfectly adequate for any wine made to be imbibed within five years, which is the vast majority of wine produced today. Screw tops are much less expensive than corks. But, apparently, the image of the sommelier of a five-star restaurant ceremoniously unscrewing the cap on that \$100 bottle has so far been too ludicrous to contemplate.

The crown cap, which keeps beer in its bottle, seems to share the same drawback, although at least it would allow waiters to flourish a bottle opener. More importantly, however, crown caps have proved to be excellent seals for long-term wine storage. Cheap, effective and easily removed, they are nearly ideal closures. Nonetheless, it remains for some designing genius to come up with an acceptably

AUCTION NEWS

Lynn Geyer's "Advertising Auctions". Main emphasis is on Breweriana (some openers). Cost is \$25.00. Advertising Auctions, 300 Trail Ridge, Silver City NM 88061 (505) 538-2341

Fink's Off The Wall Auctions. Main emphasis is on Breweriana (some openers). The cost is \$25.00. Finks Off The Wall Auctions, 108 E. 7th St., Lansdale PA 19446 (215) 855-9732

JFO and OTHER CLUBS (<i>Newsletter Name in Italics & All Clubs Offer an Annual Convention</i>)
--

American Breweriana Association (ABA): *American Breweriana Journal* (bi-monthly) on breweriana collecting. Dues \$25.00/year. Chris Galloway, Recording Secretary, P.O. Box 11157, Pueblo CO 81001

Canadian Brewerianist: *The Canadian Brewerianist* (bi-monthly) on Canadian Breweriana collecting. Dues \$12.00/year (US Funds). Loren Newman, 2978 Lakeview Trail, Bright's Grove, Ontario, CANADA, N0N 1C0

Canadian Corkscrew Collectors Club (CCCC): *The Quarterly Worme* (quarterly) on corkscrew collecting. Dues \$30.00/year. Milt Becker, PO Box 9863, Englewood NJ 07631

The Cola Club: Unfortunately issues have been suspended until a replacement Editor is found.

East Coast Breweriana Association (ECBA): *The Keg* (quarterly) on breweriana collecting. Dues \$20.00/year. John Stanley, PO Box 64, Chapel Hill NC 27514

MICROBES (Micro Chapter ECBA/NABA): *The Micro Connection* (quarterly) on micro breweriana. Dues \$8.00/year. Roger Levesque, PO Box 826, South Windsor CT 06074

Figural Bottle Opener Club (FBOC): *The Opener* (quarterly) on cast iron openers. Color guide book: \$27.95/Non Members or \$17.00/Members. Dues \$20.00/year. Linda Fitzsimmons, 9697 Gwynn Park Dr, Ellicott City, MD, 21042

JUST FOR OPENERS (JFO): *Just For Openers* (quarterly) on all areas of opener collecting (with auction each issue). Dues \$20.00/year. John Stanley, PO Box 64, Chapel Hill NC 27514-0064

National Association Breweriana Advertising (NABA): *The Breweriana Collector* (quarterly) on breweriana collecting. Dues \$20.00/year. Robert Jaeger, 1380 W Wisconsin Ave Apt 232, Oconomowoc WI 53066

SHOWS & CONVENTIONS (Sources For Openers and Corkscrews)
--

2000 Apr 26-30 – 22nd Annual Just For Openers Convention – Hyatt-Lisle IL– All Opener / Corkscrew / Breweriana Collectors Welcomed. Contact: Norm Jay, 839 James Ct, Wheaton, IL 60187-6344, (630) 690-1565

2000 Jun 13-18 – 19th Annual ABA Convention – New Orleans LA – ABA Members Only (Saturday Show is Public). Contact Stan Galloway, Executive Director, P.O. Box 11157, Pueblo CO 81001

2000 Jul 11-16 – 28th Annual ECBA Convention – Doubletree-Somerset NJ – ECBA Members Only (Saturday Show is Public). Contact John Stanley, PO Box 64, Chapel Hill NC 27514-0064, (919) 419-1546

2000 Aug 2-6 – 29th Annual NABA Convention – Holiday Inn Select-Naperville IL – NABA Members Only (Saturday Show is Public). Contact Robert Jaeger, 1380 W Wisconsin Ave Apt 232, Oconomowoc WI 53066

2000 Sep 16 – 5th Annual K.C. Antique Bottle Collectors Show (w/ Buchanan's Flea Market). Saturday Show. Contact H. James Maxwell, 1050 W Blue Ridge Blvd, Kansas City MO 64145, (816) 942-0291 hjmesq@aol.com

2000 Oct ?? – 18th Annual Midwest Breweriana Show – Holiday Inn Central-Omaha NE– JFO Members welcomed. Contact Heather Hain, 15447 Allan Dr, Omaha NE 68137, (402) 896-9917

2001 Feb 15-18 – 22nd Annual Blue & Gray Breweriana Show – Holiday Inn Holidrome-Fredricksburg VA – All JFO Members Welcomed. Contact: John Fisher, PO Box 153, Benedict MD 20612-0153, (301) 274-3340

2001 Feb 24th – 11th Annual Mid-Missouri Mega Meet at Holiday Inn Columbia, MO. 140+ Tables of Breweriana (Saturday Only Show). Contact Bruce Mobley, PO Box 163, Macon MO 63552-0163, (660) 385-6256

WANTED (Please remember there is no charge for Ads)
--

Adler Brau Openers in Good Condition: B-18-491, E-4-262, G-3-4, H-7-1, H-11-1, I-11-150, I-16-31, I-17-239, I-17-284, I-20-1, M-30-4 & N-83-1. Also looking for other H-7 & H-11 Opener.

Russ Adler, W11307 Hwy V, Lodi WI 53555, (608) 592-5766, E-Mail adler@chorus.net

Members to Swap Openers for Openers, Trade List for Trade List. People who are starting out like myself who want to build their collections from other members in different parts of the country.

Write or Call Scott Sherman, W5268 Quarry Rd Appleton WI 54915, (414) 954-1168

Golden Glow Openers: A-1-9, B-23-149, E-14-787, O-4-22 & A-12-12 Grace Bros. Also any Breweriana from Rainier Brewing Co (Seattle WA, LA CA, SF CA), Golden West Brewing Co of Oakland, CA & Port Townsend Brewing Co. of Port Townsend, WA. Buy or Trade. John Cartwright, 17 Flag Way, Paso Robles CA 93446, (805) 226-9270

Please Help Me Upgrade My Collection. How? Will trade my poor condition A-9-15 Excelsior, A-9-32 Fried and A-9-33 Rainier for your good or better ones---and \$\$\$C-A-S-H\$\$\$.

Ed Kaye, 7077 Cedarhurst Dr, Fort Myers FL 33919, Call Collect (941) 590-3068

Any: A-34 (Beer or Non-Beer), Beer: A-42, B-6, B-7, B-22, B-29-4, B-31, G-5. Soda Openers (Esp Dr Pepper, Coca-Cola, Nehi, Pepsi-Cola). B-9-2 Salinas & B-9-5 Mineral Springs. C-21-3 Old Timers, C-21-6 Grand Rapids, E-17s: #1 American, #7 I.S.D. Sioux City, #9 Everett, #12 Lion. H-1s: #8, 9, 12, 21, 23, 24, 26, 27, 31, 34, 35, 39, 42, 44.

0-1: 1, 2, 3, 5. Write for latest trade list. John Stanley, PO Box 64, Chapel Hill NC 27514-0064, (919) 419-1546

A-22-1 Ballantine. Great Trades Available. Jack Ford, 5351 Boyd Ave, Oakland CA 94618, (510) 655-5393

A-17 "Wilber Brewery" & P-8 Corkscrew "Omaha Brewing Association" (Excellent Condition Only). Will purchase outright. John Mlady, 1506 S 25th St, Omaha NE 68105-2611, (402) 345-7909

A-43-Dixie & N-15 Bud Knife. (Buying). Marc Benjamin, 167 Nixon Beach Rd, Edenton NC 27932, (919) 482-2099

Will Trade A-64-2 Miller High Life for Opener of Equal Value. Send list of what you will trade?

Ralph W. Pitsch, 2814 Wedemeyer St, Sheboygan WI 53081

B-45, B-66, I-7, P-72, P-100, R-14 types with a Corkscrew (Beer/Non-Beer) and Silver Top Beer Openers.

Herb Danziger, 550 Cherry Ct, Birmingham MI 48009-1459, (810) 646-9470

Beverwyck-B-18-499, B-21-147, C-10-48, E-9-87, F-6-87, I-2-2, I-14-1, J-5-5a, Dobler-I-11-232, I-18-6, Fitzgerald-C-20-12, I-12-23, I-18-9, Hedrick-E-9-55, Hinckel-P-30-1, Quandt-P-8-118, P-35-2, Stanton-A-20-13, C-12-103, C-18-24, Isengart-E-8-59, Stoll-B-18-380, E-8-107, Misc-A-28-40. Buying. Bill Laraway, 627 Kenwood Ave, Delmar NY 12054

Bond and Lillard Openers (would like to buy). Have A-29, would like any others. Lillard is a family name.

George Love, 4301 Forest Plaza Dr, Hixson TN 37343, (423) 877-6006

"E"s! Have Trade List (various types) to send for "E"s that I need or will buy.

Larry Moter, 10149 Michaels Rd, Woodford VA 22580, (804) 448-3928

E-2-19 Yuengling Por-Tor (Will trade heavy for this opener or pay cash).

Harold Queen, 1001 Centre Ave, Jim Thorpe PA 18229, (717) 325-2612

"E" Type Openers Wanted. Will Trade my "C", "E" and "I" Types. Please send list of what you have and I'll send my list. Ralph Tewksbury, 84 Wildwood Dr, Parkersburg WV 26101 (304) 863-3627

Wanted I-4s # 31 Acme, 33 Becker, 5 & 61 Burgermeister, 57 GB, 39 Lion, 54 Piels Schlitz, 42 Pilsner, 59 Silver Fox. Cash or trade. Ben Hoffman, 213 Simmons Rd, Perkiomenville PA 18704, (610) 287-8243

"I-5"s (E-11 Collection Complete). Send for Want List. John Patton, 9224 Sugarloaf Dr, Redding CA 96001

Will Trade O-9 Fredricks Bros. Brew for I-7-79 Fredricks Bros & one of the following: I-7-82 Balboa, I-7-46

Berghoff, I-7-64 Edel Brau, I-7-84 Lion, I-7-37 Schaefer, E-11-18 Arrow or E-11-9 Lone Star.

Tom Gormally, 100 Nelson Pl, Westfield NJ 07090, (908) 233-8867

I-7 Beer or Non-Beer Openers. I'm interested. Extensive trade list or cash.

Hale Milano, 506 Springhouse Road, Camp Hill PA 17011-1454, (717) 737-5067

WANTED (Continued) (Please remember there is no charge for Ads)
--

L-1-8 Manns. Have some traders. Harry Horn, 3113 Smoky Ct, Sacramento CA 95826, (916) 362-3590

M-3s #40,23,24,25,41,26,39,33,44,36,34,42,37,6,43 Non-Beer M-3s #2,5,6,7,8,9,13,14,16,17,19,20,21,22,23,25
Vic Keown, 10547 Mert Ave, Saint Ann MO 63074, (314) 428-6343

M-3s #20 Liberty, 40 Deer Park, 23 Fuhrmann & Schmidt, 25 Harrison Golden Brew, 41 Harrison Old Style, 26 Senate, 39 Hialeah, 33 Moose, 44 Osterstock, 36 Piel Bros, 34 Ruppert, 42 Seitz, 37 Sheridan, 6 Standard Erin Brew, 27 Trommers. Don Virostek, 3746 Margate Rd, Pittsburgh PA 15221-3914, (412) 241-5894

O-5 Openers/Send for list-Buy/Trade.Top \$\$\$. Steve Owen, 1175 Elkins Lake, Huntsville TX 77340 (409)295-3329

Bottle Shaped and/or Openers with Bottle on them. Gary Deachman, PO Box 438, North Woodstock NH 03262

Cigar Box Openers: HT-5---SHM-2,6,13---DHM-13,15---RBO-1---HKH-7,9---HOR-3---RND-13---SQR-4---NL-6---BB-13,16,17,18---PKT-1,2,5,6,8,9,10---SEP-9---MIS-5,8. Ken Hoesch, PO Box 299, Zeeland MI 49464-0299

Cigar Box Openers: SHM-2,8,10,11,13,14 DHM-13,14,15,16 RBO-3,9,12 HOR-2,3 RND-6,8,9,10 SQR-1,4 NL-6 BB-1,6,19 BUT-2,4 PKT-1,5,6,8,9,10 SEP-2,6,7,8,9 MIS-4,6,7,10,11. Will purchase or trade from 600+ collection. (Types from the Cigar Box Opener Handbook copies available from Mike for \$3.00 which includes mailing) Mike Schwimmer, 325 E. Blodgett Ave., Lake Bluff IL 60044-2112, (847) 295-1901

"E"- "I"-Other Beer Openers to rebuild my collection. Will buy or trade beer openers, cigar box openers, non-beer openers. Send for list of "oddities". Glen Enloe, 805 Tepee Dr, Independence MO 64056, (816) 796-9965

Hartford, Connecticut Openers Wanted esp. E-8-61 Fischer & P-17-4 Columbia.

Edward Johnson, 1290 Poquonock Ave, Windsor CT 06095, (860) 688-6795

Corkscrews-Cork Pullers-Syroco (especially Golden Knight and Clown)-Early US Patents-Anything Unusual. Pay competitive price in trade or cash. Have many corkscrews to trade. Please send description, sketch, photocopy, etc to Paul Luchsinger, 1126 Wishart Place, Hermitage PA 16148 (Tel/Fax 724-346-2331)

Corkscrews & Tin Can Openers: Beer Openers for Trade. Joe Young, 36 S. Weston Ave., Elgin IL (847) 695-0108

Corkscrews, Beer Advertising Letter Openers, Beer Advertising Knives, & Postcards depicting Corkscrews. Please send description, photo, sketch, photocopy, or tracing of what you have and advise price wanted. Don Bull, PO Box 596, Wirtz VA 24184, (540) 721-1128, E-Mail corkscrew@bullworks.net

Corkscrews: Esp. Figural, Syroco, Thomason, Bakelite; also Wine Ephemera (Ads, Postcards, Labels, Grape Box Labels, Etc.); and Bakelite Anything. Buy Straight Out. Abby Nash, 172 Bush Lane, Ithaca NY 14850

Corkscrews: Esp. Walker's "Waiters & Hallboys" and old Williamson wire shafted "T"s with attachments to wood handle (such as brushes/wire cutters). John Vlossak, 1044 East Eldorado St., Appleton WI 54911, (414) 739-2789

"F" Type Beer Advertising Openers, Beer Advertising Letter Openers, Beer Advertising Match Safes and Beer Advertising Knives (with or without openers on them). Larry Biehl, 448 Crandon, Calumet City IL 60409

Figural Corkscrews and any WASHINGTON D.C. Openers and/or Corkscrews.

Sandra Emme, PO Box 1454, Upper Marlboro MD 20773, (301) 627-8207

Openers from Jamestown Brewing Co, Kuhn's Beer, Chautauqua Brew, Monessen, PA, Independent Brewing Co, Schaefer, & all Cleveland Beers. Ed Schaefer, 366 Bassett Rd., Bay Village OH 44140, (216) 871-0449

Lansford, PA Advertising Items: Openers, Spoons, Blob Bottles, Labels, Etc. Cash or Trade. Tony Zanghi, 2225 Deer Trail Rd, Coopersburg PA 18036-9069, (610) 346-8232, E-Mail anthony.zanghi@conrail.com

Lexington Brewery (Dixie Beer) & Coca-Cola Openers. Want to buy any figurals or unusual older examples of these. Also looking for old manufacturer's brochures or catalogs (originals or copies of). Thom Thompson, 123 Shaw Ave., Versailles KY 40383, (606) 873-8787

"M-1 & M-2" Lithographed Openers (Excellent Condition Only) by beginning collector. Also Openers or Other Related Items to any Jung Breweries. Paul Jung, PO Box 425, Bechtelsville PA 19505, (610) 367-0239

WANTED (Continued) (Please remember there is no charge for Ads)

Minnesota Openers: Any St. Cloud, Red Wing or Rochester MN. Also A-30-7 Premier, B-24-77 Fitgers, L-4-27 Schmidt, L-4-67 Schmidt, M-2-15 Rex (Fitgers), N-8-1 Schuster, N-43-2 Bub, N-74-1 Hamms. Pat Stambaugh, 718 S Lakeshore Dr, Lake City MN 55401

Montana & Idaho Beer/Brewery Openers & other Breweriana. Also looking for H-8 & L-1 Openers to complete collection. Steve Armstrong, PO Box 741, Kamiah ID 83536, E-Mail sunset@cybrquest.com

Montana Openers-Corkscrews: I need 39 of the 211 in the JFO Handbook. A-17-43, A-21-84, A-43-5, A-45-1, A-45-2---B-5-29, B-18-370, B-18-479, B-18-481, B-18-331, B-18-538, B-21-471, B-21-142, B-21-488, B-21-522, B-22-112, B-52-5---E-1-52, E-2-29, E-4-325, E-9-29, E-13-29, E-23-3---F-8-9---M-29-63---N-38-4---P-7-41, P-8-160, P-8-56, P-17-11, P-18-3, P-18-6, P-31-9, P-62-2, P-66-6, P-83-1. Will trade generously (am breaking up my type collection & have plenty of trade bait) or purchase any of the above. Also interested in any Montana advertising openers (non-Beer). Bill Pattie, 37050 SE 89th St., Snoqualmie WA 98065, (206) 888-2496

Nebraska Openers esp: "A"s, "B"s, Omaha, West Point, Grand Island, Crete, Columbus. New Collector Top Prices Paid. Tim Payne, 5144 Walker Ave, Lincoln NE 68504, (402) 466-6592, E-Mail house-of-payne@webbtv.net

New York State Openers: E-4-4 American, E-4-345 Koch, E-14-312 Amsterdam, G-1-67 Hupfel. Will Buy or Trade. Mark Barren, 6141 Tachi Dr., Newfane NY 14108-9517, (716) 778-9724

Orange Crush Openers Wanted: Will Buy or Trade if I have anything you may need. Thanks. Paul Gauvin, 24 Strawberry Ln, Manchester CT 06040, (860) 646-9722, E-Mail mtkneo@aol.com

P-1-2 Anheuser-Busch Corkscrew & \$75 for P-1-10 Highland or P-1-15 Schnaiders or P-1-16 Schoenhofen or P-88-2 Burton or P-88-3 National or P-88-4 Yonkers. Ollie Hibbeler, 298 Highline Road, Lake Ozark MO 65049 Also would like to trade for or purchase Q-12 Openers: #2 Bud Light, #5 Busch Gardens, #7 Busch, #24 La Beer, #33 Busch Light Draft Beer, #34 Bud Dry Draft, #35 Budweiser, #41 Bud Light Beer, #42 Budweiser.

Help!!! need only 10 of 45 known Spokane, Washington Openers to complete collection: B-6-9 Spokane, B-13-61 Bohemian Club, B-14-109 Spokane, E-3-58 Bohemian Club, E-6-137 Golden Age, E-7-6 Gilt Top, E-14-475 Bohemian Club, N-44-1 Inland & P-19-16 New York. Will trade heavy or pay your price. Nick Johnson, 4708 Spiser Ln, Wichita Falls TX 76302, (940) 322-1696

West Virginia Openers (B-7-12, B-18-110, and H-4-3), also Southern US Beer openers and corkscrews. Roger Jarrell, 1500 Sedwick Rd., Durham NC 27713, (919) 544-7787

upscale version.

If I had to guess, I'd say I open about 1,000 bottles a year, between wines I taste and wines I drink. I've broken countless corks. I've encountered wines with some degree of corkiness, ranging from barely perceptible to staggeringly bad, at least 5 percent of the time. I've spent hundreds of dollars on corkscrews. With enthusiasm, I would welcome crown caps, screw tops or any other less problematic closure.

But I must admit I'd miss the ritual of pulling the cork, that miniature drama with its wonderful moment of anticipation as the cork starts to slide up, and its soul-satisfying denouement, the small pop that announces the good times are about to begin. I'd get over it, though. ■



John Sappington is wine consultant for the new Chez Leon bistro in the Central West End and director of the LaCade Wine Society. He has written about wine for many years.

We have, at last, become a nation of wine drinkers. Sort of. The United States ranks 36th among nations in per capita consumption of wine, according to industry sources. But our remarkably low consumption rate — less than 7.5 liters of wine per American per year — means we imbibe about one-eighth of what Italians and Frenchmen do and approximately half of what the average Briton downs.

More alarming for the wine industry are the demographics behind the statistics. Baby boomers,

now ages 36 to 54, are drinking wine, but twenty- and low-thirty-somethings are not. All of which means the present may be rosy, but the future looks rough. To figure out how to get more people, especially young adults, to drink more wine, expect lots of wine-industry talk about marketing, increasing Internet sales, more restaurant staff-training seminars, better label designs and new media campaigns.

Meanwhile, an organization called Wine Brats (www.winebrats.org), started by a group of young California vintners

dedicated to introducing their peers to the pleasures of wine, aims to dispel the snobbish and stuffy attitudes associated with wine's consumption. Another group, Free The Grapes! (www.freethegrapes.org), is pressing for repeal of laws preventing direct shipment of wine to consumers, a growing issue in the age of e-commerce. Currently, about 50 percent of states — Missouri and Illinois are not among them — ban or severely restrict the shipment of wine to their residents. Change is coming, no doubt.

SELLING (Please remember there is no charge for Ads)

Openers & Breweriana for Sale: Types (Beer & Non-Beer) "B", "C", "D", "E", "F", "I", "R", Cigar Cutters, Beer Taps, Beer Trays, Ice Picks, Wine Openers, Jar Wrenches, Beer Steins, Novelty Wood & Brass Openers. Bette Peters, 1425 NW Ponderosa, Grants Pass OR 97526 sheryl@tcdsnet.net

Beer Openers for Sale: Send SASE for Lists. Edward J. Eichhorn, 2010 Sandia Ct, Lusby MD 20657

Starr X (Type O-5) Wall Mounts, Selling Warehouse Collection, Send SASE for List, Clayton Denny, 630 Nottingham Dr, Hampton VA 23669-1618, (757) 851-4258

"Openers (Beer and Otherwise), Corkscrews and Figurals For Sale". Send SASE (2 Stamps Business Size). Carl T. Jantos, 7025 Kevin Drive, Bethel Park PA 15102-3913

Beer and Soda Openers For Sale. Send SASE for List. John Fisher, PO Box 153, Benedict MD 20612-0153

"American Breweries II": by Dale Van Wieren. Over 18,000 entries for nearly 8,000 brewing firms, tracing names, addresses, and dates of operation. (\$18 Priority Mail). John Stanley, PO Box 64, Chapel Hill NC 27514

2000 Handbook of United States Beer Advertising Openers and Corkscrews (contains 13,000 Listings & Pictures for 2000 New Discoveries) . \$13 sent priority mail. John Stanley, PO Box 64, Chapel Hill NC 27514

"Just For Openers" "A Guide to Beer, Soda, & Other Openers" by Donald A. Bull & John R. Stanley, 160 Pages, 380 Color Pictures, \$25.00 plus \$3.20 shipping (US Only). Bullworks, PO Box 596, Wirtz VA 24184

"Soda Advertising Openers" by Donald A. Bull & John R. Stanley, 160 Pages, Over 275 Color Pictures & 2500 Listings, \$25.00 plus \$3.20 shipping (US Only). Bullworks, PO Box 596. Wirtz VA 24184

"The Ultimate Corkscrew Book" by Donald A. Bull, Hardcover Book Weighs 5 Lbs, 744 Color Photographs, 3746 Corkscrews with Values, \$75.00 plus \$8.50 shipping (US Only). Bullworks, PO Box 596, Wirtz VA 24184

"Bull's Pocket Guide to Corkscrews" by Donald A. Bull, 190 Pages, Over 200 Color Photographs, 942 Corkscrews with Values, \$18.00 plus \$3.20 shipping (US Only). Bullworks, PO Box 596, Wirtz VA 24184

"Hometown Beer - A History of Kansas City's Breweries" by H James Maxwell & Bob Sullivan Jr, Hardcover Book with 300 Pages, 585 Pictures (352 in Color) and Illustrations, \$50.00 Postpaid in US. H. James Maxwell, 1050 West Blue Ridge Blvd, Kansas City MO 64145-1216

Newsletter Content and Deadlines for Sending in Articles and Receiving Newsletter				
	January Issue	April Issue	July Issue	October Issue
Newsletter Content	New Additions to Handbook	Membership Directory	Convention Highlights	New Discoveries
Articles	December 1st	March 1st	June 1st	September 1st
Receiving	January 31st	April 30th	July 31st	October 31st

Just For Openers "Auction Guidelines"

Please Note: Fee of 15% Will Be Charged on Consignments

This auction is a service to members of JFO. Submit consignments by sending a graded inventory list. Reasonable minimum bids can be established for good items. Any openers submitted for the auction should have a minimum value of \$1.00. Money realized will be sent 4 to 5 weeks of the closing date.

Please Write First Before Sending Consignment Material.

When Bidding Please! give the Lot Number and a Short Description with each bid.

Please remember to at least sign your name on each auction page and keep a copy.

Please, Please, Please SEND IN YOUR BID SHEETS EARLY & NOT AT THE LAST MINUTE

Results of January 2000 JFO Auction Closing February 17, 2000

219	E-014-LOT	#188 MILLER #195 NATIONAL #529 ORTLIEB #226 QUEEN CITY	6	18.55
220	E-014-LOT	#109 GOETZ #187 MILLER #697 SCHMIDT #555 STAG	6	2.15
221	E-014-LOT	#196 NATIONAL #705 OERTEL #279 STRAUB #286 TROMMERS	6	18.55
222	E-014-LOT	#51 COORS #110 GOETZ #185 METZ #705 OERTEL	6	3.15
223	E-014-LOT	#186 METZ #705 OERTEL #701 STEGMAIER #286 TROMMERS	6	12.01
224	E-014-UL	SUPREME DIST	6	25.25
225	E-032-001	WEHLE	4	31.50
226	F-002-003	ESSLINGER	8	6.80
227	F-002-005	MIRABILE-BEER-	8	12.79
228	F-002-UL	CLIMAX BEV	6	11.53
229	F-004-017	KAIER (Tie Bid)	6	20.00
230	F-005-023	OHIO MALT	4	10.00
231	F-006-999	MILLER GINGER	6	7.10
232	G-001-001	ABC	2	3.65
233	G-001-004	BUCKEYE	2	3.65
234	G-001-005	CAMDEN	6	6.00
235	G-001-007	EBLING	6	7.00
236	G-001-008	EBLING	4	4.15
237	G-001-009	ESSLINGER	4	4.15
238	G-001-010	FOX HEAD	4	7.50
239	G-001-011	GOLDENROD	4	11.31
240	G-001-016	LATROBE	2	3.66
241	G-001-018	OLD READING	6	6.00
242	G-001-019	OLD SHAY	2	3.65
243	G-001-021	PABST	4	4.00
244	G-001-022	PIEL	4	4.15
245	G-001-023	QUANDT	4	11.00
246	G-001-024	SCHAEFER VAR (B)	2	3.65
247	G-001-025	TRU-BLU	2	3.65
248	G-001-033	KINGS VAR (A)	6	12.79
249	G-001-035	LIEBERT AND OBERT	1	15.00
250	G-001-040	ROBIN HOOD	4	6.00
251	G-001-044	KEELEY	2	3.00
252	G-001-046	BERGHOFF	4	8.01
253	G-001-059	BLACK HORSE	6	10.62
254	G-001-999	Morgan Ginger	8	7.53
255	G-001-999	Franks Ginger	8	10.11
256	G-001-999	High-N-Dry Ginger	6	7.53
257	G-001-999	SCOTT FRUIT CO	6	7.53
258	G-002-LOT	(7 DIFFERENT) #1 BOSTON #3 HAMPDEN #4 HAMPDEN #5 HARVARD (HOLE IN HANDLE) #10 HUDEPOHL #6 PENNSYLVANIA #7 POINT	6	32.00

259	G-006-LOT	(13 DIFFERENT) #1 BARTELS (COPPER) #1 BARTELS (STEEL) #4 F&S #5 FORT PITT (COPPER) #5 FORT PITT (STEEL) #6 GLUEKS #7 GRETZ #8 GUNTHERS #16 HAFFENREFFER #9 HOLIHANS #17 NATIONAL #13 SUNSHINE #14 WALTERS (ALL VG TO EX)	6	17.15
260	G-007-LOT	(5 DIFFERENT) #3 FORT PITT #6 HARVARD #9 PICKWICK #10 SCHMIDTS (COPPER) #10 SCHMIDTS (STEEL)	6	13.00
261	G-008-LOT	(13 DIFFERENT) #1 BECKS #3 COLUMBIA #4 DAWSONS #23 GIBBONS #21 GLUEK #13 INDEPENDENT #25 LEISY #14 MANRU #7 MARATHON #9 RUPPERT #22 STEIN #11 SUNSHINE 4" #11 SUNSHINE 4 1/8" (ALL GOOD TO EXCELLENT)	6	25.15
262	G-009-004	DOWN	8	15.00
263	G-009-019	SCHREIBER	2	2.25
264	G-009-020	SIMON PURE	8	14.00
265	G-013-999	Fox Snappy Drinks	4	4.50
266	G-025-999	Gierings Ginger	8	15.11
267	H-001-006	NEUWEILER	4	6.00
268	H-001-013	SUNSHINE	4	
269	H-001-025	PHOENIX	4	4.50
270	H-002-105	HENSLER	6	15.00
271	H-002-163	SAN DIEGO	6	26.00
272	H-002-999	BUCK SOFT DRINK	4	4.00
273	H-002-999	BLUE ANCHOR	4	5.10
274	H-002-999	Silver Rock Ginger	6	5.10
275	H-002-999	Blue Rock Bev	6	4.00
276	H-002-999	Evangeline Ginger	6	5.10
277	H-002-999	Joyce Seven Up	6	4.00
278	H-002-999	Cornwall Bot Ginger	6	5.10
279	H-003-016	IROQUOIS	6	12.00
280	H-003-LOT	#36 DUTCH CLUB #17 KOEHLER #23 SIMON #27 TECH	6	3.61
281	H-003-LOT	#2 BEVERWYCK #8 FITZGERALD #19 ORTLIEB #38 WAYNE	6	8.26
282	H-003-LOT	#33 CAMDEN #6 EDELWEISS #44 HEILEMAN #22 SCHLITZ	6	6.50
283	H-003-LOT	#31 BAVARIAN #5 DUTCH CLUB #15 IRON CITY #7 ESSLINGER	6	15.81
284	H-003-LOT	#7 ESSLINGER #37 GIBBONS #18 MONARCH #29 YUENGLING	6	15.81

285	H-003-LOT	#14 HORNUNG #20 ROLLING ROCK #21 SCHEIDT #24 STEGMAIER	6	9.11
286	H-003-LOT	#32 BERGHOFF #4 DUQUESNE #13 HEHENADEL #25 STEGMAIER	6	14.50
287	H-005-006	KAIER	6	5.00
288	H-005-007	JOLLY SCOT	6	4.79
289	H-005-008	LUCKY JEWEL	6	4.50
290	H-005-009	NEUWEILER	6	3.00
291	H-005-011	FLOCK	6	3.66
292	H-005-013	LUCKY JEWEL	6	2.55
293	H-005-016	HAZELTON	6	3.66
294	H-005-018	BARTELS	8	3.66
295	H-006-005	PABST	6	1.65
296	H-006-011	OLYMPIA	8	2.26
297	H-006-012	PABST	6	1.65
298	H-011-001	ADLER BRAU	4	4.50
299	I-007-999	Dr Phillips	8	12.22
300	I-008-002	NORTHAMPTON	6	15.79
301	I-009-001	WALDORF	6	5.00
302	J-007-001	BEER KEGLINED	6	7.77
303	J-009-002	BLATZ	6	15.00
304	L-003-004	MICHELOB	6	18.77
305	M-001-003	HAFFENREFFER	8	16.50
306	M-001-016	OLD COLONY	6	30.00
307	M-003-018	STEGMAIER	6	23.50
308	M-004-001	BLATZ	2	3.15
309	M-015-001	MILLER	6	9.65
310	M-030-999	MARVEL ROOT BEER	6	12.11
311	M-034-006	LITE	6	6.50
312	M-063-003	MICHELOB	1	15.77
313	N-008-999	GILLYS HOTEL CLEVELAND	4	21.66
314	N-009-001	CAMDEN	6	9.50
315	N-009-999	GOLDEN AGE BEV	6	2.65
316	N-009-999	ARROWHEAD GINGER	6	11.11
317	N-009-999	JOYCE TUP	4	5.00
318	N-011-003	FALSTAFF	6	11.11
319	N-011-999	Manitou	6	5.10
320	N-026-999	PAULS MARKET	6	5.00
321	N-040-021	BLITZ WEINHARD (MIN \$20)	8	26.00
322	N-042-999	Cott Bev	8	10.00
323	O-004-999	YORK DR PEPPER	8	45.00
324	P-046-999	Bacons Bev	6	12.50
325	P-090-003	HUPFEL	6	61.10
326	Q-010-006	COORS	1	5.15
327	X-002-001	TELLURIDE	1	24.11

Thanks to all
56 Bidders

April 2000 JFO Auction-Closing May 17, 2000- Name & Mem #:
--

Send Bids To: John Stanley, PO Box 64, Chapel Hill, NC 27514

Auction Rules (Note: No Phone Bidding)

- 1) \$1.00 Minimum Bid on Each Lot, Only 1 Bid for each Lot Allowed
- 2) Openers Sold to Highest Bidder, For Identical Bids Earliest Postmarked Bid Wins
- 3) 7 Days to Return Openers If Not Satisfied, Shipping and Handling Extra
- 4) Openers Shipped Upon Payment (Please Pay within 7 days of Receiving Invoice)
- 5) Results Shown Next JFO Issue (Winning Bidders Receive Copy with Invoice)

**Grading (G): 1-Poor, 2-Fair, 4-Good, 6-Very Good, 8-Excellent, 10-Near Mint-Mint
(UL-Unlisted in 2000 Handbook, 999 Non-USA-Beer)**

JFO # & Description from 2000 Handbook Of United States Beer Advertising Openers and Corkscrews

#	JFO #	Description	ST	G	BID
1	A-001-052	JAMAICA PALE DRY GINGER ALE (PROHIBITION SODA BY JOHN GRAF)	WI	6	
2	A-001-999	BAKER'S BEVERAGES TEMPLE HILL DRY GINGER ALE NEWBURGH, N.Y. PHONE 596	NY	6	
3	A-003-041	BELOIT MALT PROD. CO. 436 BROAD ST. BELOIT, WISC.	WI	4	
4	A-004-022	DRINK FALLS CITY BR'G CO. BEER LOUISVILLE, KY.	KY	6	
5	A-005-036	MAIN MALT & SUPPLY CO. 1150 S. MAIN ST. AKRON, O. 405 N. 2ND ST. BARBERTON, O.	OH	8	
6	A-007-003	FRONTENAC EXPORT ALE (CANADIAN)		6	
7	A-012-006	WHITE LABEL EAST INDIA ALE / REGAL SPELL IT BACKWARDS (CANADIAN)		4	
8	A-012-010	BECKER'S PALE BEER "PREMIUM QUALITY" OGDEN, UTAH	UT	6	
9	A-013-999	PURITAN METAL POLISH QUICKEST AND BRIGHTEST MADE BY PURITAN SOAP CO. ROCHESTER, N.Y.	NY	4	
10	A-013-999	MCGREAL BROS. CO. CHOICE WINES & LIQUORS ROCHESTER, N.Y.	NY	8	
11	A-015-013	TERRE HAUTE BREWING CO. TERRE HAUTE, IND. / CHAMPAGNE VELVET "THAT EVER-WELCOME BEER!"	IN	6	
12	A-015-026	SOUTH BEND BREWING ASSN. DRINK "TIGER BREW"	IN	6	
13	A-017-012	KAMM & SCHELLINGER BRG. CO. MISHAWAKA, IND. / PREMONA BEER	IN	6	
14	A-017-999	CAFÉ LA RIVIERE PHILADELPHIA	PA	4	
15	A-018-999	SEAFOOD GROTTO DETROIT ALIVE EVERY DAY (CRAB ENGRAVED ON FRONT SIDE ALONG WITH THE FISH DESIGN)	MI	6	
16	A-020-999	NEW NATIONAL HOTEL CAMBRIDGE, O. G. H. ANDREWS, PROP. / COFFEE SHOP, DINING ROOM & GRILL ELEVATOR SERVICE FREE PARKING	OH	6	
17	A-021-035	WEST VIRGINIA EXTRA PALE PILSNER BEER	WV	8	
18	A-021-999	THE CENTRAL TAVERN LIQUORS-FOOD 101 WEST ST. N.Y.C.	NY	4	
19	A-021-999	DIXIE WHEEL CO. RICHMOND, VA.	VA	6	
20	A-028-002	CONSUMERS PRODUCTS CO. BROOKLYN, N.Y. / USE PILSER BRAND MALT & HOPS	NY	4	
21	A-028-003	BOTTLED AT THE BREWERY BY THE DEPPEN BREWING CO. READING, PA. / QUEEN QUALITY.	PA	4	
22	A-035-999	DERBY BAR, C. J. WHITE, PROP. LARAMIE, WYOMING	WY	4	
23	A-035-999	DRINK GAY-OLA IT'S BETTER 5C / DRINK GAY-OLA SATISFIES THIRST		4	
24	A-045-999	GOTTA GO, GO TO OPTIMO CLUB BEER, LIQUOR-OFF SALE-WILLOWS		4	
25	B-007-005	HEURICH BEERS MEDALS: SILVER-PARIS GOLD LIEGE / KEY TO MAERZEN SENATE	DC	6	
26	B-013-121	STRONG MALT SHOP 1101 SO. SALINA ST. SYRACUSE	NY	8	
27	B-014-029	HOOSIER BEER (LION HEAD) / HOOSIER BEER	IN	6	

April 2000 JFO Auction-Closing May 17, 2000- Name & Mem #:					
--	--	--	--	--	--

28	B-014-030	K. & S. CO. PULL FOR KAMM'S BEER (VAR (A) BLOCK LETTERS)	IN	6	
29	B-014-033	MANITOWOC PRODUCTS CO. KINGSBURY PALE / THE ARISTOCRAT OF THEM ALL MANITOWOC, WIS.	WI	4	
30	B-014-041	JACOB SCHMIDT BREWING CO. ST. PAUL, MINN. / SCHMIDT'S CITY CLUB	MN	6	
31	B-014-100	MANITOWOC PRODUCTS CO. MANITOWOC, WISCONSIN / KINGSBURY PALE	WI	6	
32	B-015-016	DRINK >A-R-R-O-W-> IT HITS THE SPOT	IN	6	
33	B-015-UL	EMRAL THE JULEPY MINT DRINK. (SEE B-18-85 ARROW)	IN	6	
34	B-018-045	MANITOWOC PRODUCTS COMPANY MANITOWOC, WISCONSIN / KINGSBURY PALE	WI	4	
35	B-018-284	KAMM & SCHELLINGER COMPANY, MISHAWAKA, IND. / DRINK >A-R-R-O-W-> IT HITS THE SPOT	IN	6	
36	B-018-UL	KEY TO CROWN BREWING CO'S FINE BOTTLED BEERS	OH	6	
37	B-019-062	DRINK DICK BROS' QUINCY BEER QUINCY, ILL.	IL	8	
38	B-019-098	THE MUESSEL BREWING CO. SOUTH BEND, IND. / SILVER EDGE BEER	IN	6	
39	B-019-221	THE MUESSEL BREWING CO. SOUTH BEND, IND. / SILVER EDGE BREW.	IN	6	
40	B-021-005	BARTHOLOMAY ROCHESTER BEER AND ALE IN BOTTLES	NY	4	
41	B-021-041	INDIANAPOLIS BREWING CO. DUESSELDORFER THE WORLD'S STANDARD OF PERFECTION	IN	6	
42	B-021-076	SCHLITZ IN BROWN BOTTLES / THE BEER THAT MADE MILWAUKEE FAMOUS	WI	4	
43	B-021-168	INDIAN BREWING CO. / DRINK INDIAN BEER	PA	6	
44	B-021-172	THE KITTANNING BRG. CO. KITTANNING, PA. / K.B.C. BOHEMIAN AND EXPORT BEER	PA	4	
45	B-021-276	KEY TO LOS ANGELES BREW. CO'S. BOTTLE BEERS NO BETTER BEER BREWED	CA	4	
46	B-021-283	THE MUESSEL BREWING CO. SOUTH BEND, IND. / SILVER EDGE BEER	IN	4	
47	B-021-513	BERKSHIRE BREWING ASS'N DRINK BERKSHIRE BEERS PITTSFIELD, MASS.	MA	6	
48	B-021-565	CALL FOR BURKHARDT'S THE GENUINE BEERS, ALES & PORTER ROXBURY CROSSING, MASS.	MA	2	
49	B-021-999	THE PRESTO BOTTLE OPENER AND GAS TANK KEY		4	
50	B-022-004	FALSTAFF BOTTLED BEER / SAME	MO	6	
51	B-022-999	COMPLIMENTS OF VANCOUVER BREWERIES, LTD. VANCOUVER, B.C. / DRINK CASCADE BEER (CANADIAN)		4	
52	B-022-999	DIAMOND A GINGER BEER ENGLISH BREWED		6	
53	B-023-045	BLUE RIBBON MALT EXTRACT / PREMIER DISTRIBUTING CO. DALLAS	TX	4	
54	B-023-999	SPARK-LIN-ALE THE PERFECT GINGER ALE MARTINS FERRY, OHIO	OH	6	
55	B-023-999	"CAVALIER"		8	
56	B-023-999	DRINK TORAH		6	
57	B-023-999	DRINK CONEY ISLAND		8	
58	B-023-999	RED WING MILLING CO. RED WING, MINN. RED WING SPECIAL FLOUR	MN	6	
59	B-024-033	K.G. SCHMIDT'S BEER LOGANSPORT, INDIANA (VAR (A) SMALL LETTERS)	IN	4	
60	B-024-999	DRINK MORNING GLORY WHOLE TOMATO BEVERAGE		6	
61	B-032-001	DRINK >A-R-R-O-W-> IT HITS THE SPOT	IN	6	
62	B-040-999	PEPSI-COLA / AMERICA'S BIGGEST VALUE		6	
63	B-042-999	COMPLIMENTS OF KEY-STONE SPRING EAST POLAND, ME. E. M. PRATT, PROP.	ME	6	
64	B-053-999	FORT DODGE BOTTLING WORKS, PHONE 174 / WE SELL STERILIZED DRINKING WATER.		6	
65	C-005-002	PABST BLUE RIBBON / THE BEER OF QUALITY	WI	6	

April 2000 JFO Auction-Closing May 17, 2000- Name & Mem #:					
--	--	--	--	--	--

66	C-006-001	BLACK BASS ALE / CONGRESS LAGER DERBY PALE ALE	NY	6	
67	C-006-002	FALLS CITY LAGER BEER	KY	4	
68	C-006-004	PABST BLUE RIBBON THE BEER OF QUALITY (RIBBON) 522	WI	4	
69	C-007-001	UTICA-CLUB PILSENER-WUERZBURGER ITS IN THE TASTE PALE DRY GINGER ALE / SAME	NY	4	
70	C-009-001	ACME BEER	CA	6	
71	C-009-003	BLATZ MILWAUKEE (VB IN STAR)	WI	10	
72	C-009-004	THE BRUCKMANN CO. CINCINNATI	OH	4	
73	C-009-007	STORZ BEER OMAHA	NE	4	
74	C-009-012	DRINK VALLEY FORGE SPECIAL / PHILADELPHIA BRANCH 2815 RIDGE AVE.	PA	4	
75	C-009-031	DRINK VALLEY FORGE SPECIAL / SAME	PA	4	
76	C-010-002	AMERICAN BREWING CO. ROCHESTER, N.Y. / TAM O'SHANTER ALE APOLLO BEER	NY	4	
77	C-010-003	AMERICAN BREWING CO. ROCHESTER, N.Y. / TAM O'SHANTER ALE LIBERTY BEER	NY	4	
78	C-010-004	FAMOUS BEVERWYCK BEER & ALE ALBANY, N.Y.	NY	8	
79	C-010-012	KOERBER'S BEER AGE-STRENGTH-PURITY	OH	4	
80	C-010-013	MANZ BEER	PA	6	
81	C-010-016	PHOENIX BEER-ALE / SAME	NY	4	
82	C-010-018	PIEL'S BEER	NY	6	
83	C-010-024	FAMOUS A-B-C BEER / SAME	MO	6	
84	C-010-028	MILLER HIGH LIFE BEER (BOTTLE)	WI	8	
85	C-010-046	WAYNE BREWING CO. ERIE, PA. / WAYNE BREW	PA	6	
86	C-011-002	INDEPENDENT MILWAUKEE BREWERY PHONE MITCHELL 0880 / BILL'S BRAUMEISTER THE BREW WITH THAT OLD TIME FLAVOR	WI	8	
87	C-011-003	SCHOENLING BEER CINCINNATI'S FINEST PHONE CHERRY 4-344	OH	8	
88	C-011-004	BLATZ MILWAUKEE / BLATZ OLD HEIDELBERG	WI	4	
89	C-011-006	DRINK FALSTAFF ST. LOUIS	MO	8	
90	C-011-009	INDEPENDENT MILWAUKEE BREWERY PHONE MITCHELL 0880 / MILWAUKEE'S CHOICE BRAUMEISTER GENUINE LAGER BEER	WI	4	
91	C-011-020	KAMM & SCHELLINGER CO. MISHAWAKA, IND. DRINK >A-R-R-O-W>	IN	4	
92	C-012-999	SPUR IT'S A FINER COLA / SAME		6	
93	C-013-002	BARTELS BEER ALES	PA	4	
94	C-013-007	BREIDT'S BEER-ALES SINCE 1867	NJ	2	
95	C-013-009	BRUCK'S DISTINCTIVE BEERS CINCINNATI OVER 80 YEARS	OH	4	
96	C-013-019	DETROIT BREW. CO. OLD BRU BEER (BOTTLE)	MI	6	
97	C-013-021	DOBLER P.O.N.	NY	6	
98	C-013-022	DOBLER SINCE 1865	NY	6	
99	C-013-023	DUBOIS BREWING CO. DUBOIS, PA. "LET'S MEET AND BE FRIENDS" / DUBOIS BUDWEISER BEER (BOTTLE)	PA	4	
100	C-013-025	DUQUESNE BREWING CO. (REST IN HANDBOOK)	PA	4	
101	C-013-027	THE EBLING BREWING CO. INC. NEW YORK, N.Y. EBLING'S EXTRA THAT GRAND OLD BEER (BOTTLE)	NY	4	
102	C-013-030	F & S BEER ALE	PA	6	
103	C-013-031	FUHRMANN & SCHMIDT BREWING CO. SHAMOKIN, PA. / F & S BEER (BOTTLE)	PA	6	
104	C-013-032	FALLS CITY BEER	KY	4	
105	C-013-033	FALLS CITY BREWING CO. LOUISVILLE, KY. FALLS CITY BEER (BOTTLE)	KY	6	
106	C-013-036	FEIGENSPAN P.O.N.	NJ	4	

April 2000 JFO Auction-Closing May 17, 2000- Name & Mem #:
--

107	C-013-037	FITZGERALD BROS. BREWING CO. (REST IN HANDBOOK)	NY	8	
108	C-013-038	FITZGERALD'S BEER ALE	NY	6	
109	C-013-041	FORT PITT DOUBLE LAGERED BEER	PA	4	
110	C-013-042	FORT PITT SPECIAL PREMIUM BEER	PA	6	
111	C-013-047	GENESEE PREMIUM QUALITY BEER	NY	6	
112	C-013-048	MADE ONLY BY THE GERMAN BREWING (REST IN HANDBOOK)	MD	6	
113	C-013-052	GOLDEN GLOW BEER ((B) BLOCK)	CA	4	
114	C-013-054	GRAUPNER'S BEER-ALE HARRISBURG, PA.	PA	6	
115	C-013-056	HAMM'S SMOOTH MELLOW BEER	MN	6	
116	C-013-057	HANLEY'S FOR ALE	RI	8	
117	C-013-060	IRON CITY BEER / SAME	PA	2	
118	C-013-061	FRANK JONES ALE	NH	6	
119	C-013-062	ASK FOR K-B BEER		6	
120	C-013-066	G.KRUEGER BRG.CO. NEWARK,N.J. KRUEGER BEER-ALE (WAITER)	NJ	6	
121	C-013-071	MILLER HIGH LIFE BEER HIGH LIFE (BOTTLE)	WI	4	
122	C-013-073	MUESSEL SILVER EDGE BEER	IN	4	
123	C-013-074	NATIONAL PREMIUM BEER	MD	10	
124	C-013-076	NORTH AMERICAN BREWING CO. (REST IN HANDBOOK)	NY	2	
125	C-013-079	ORTLIEB'S BEER (BOTTLE)	PA	6	
126	C-013-080	PABST BLUE RIBBON BEER (BOTTLE)	WI	8	
127	C-013-091	RUPPERT BEER ALE	NY	6	
128	C-013-093	RUPPERT KNICKERBOCKER BEER	NY	4	
129	C-013-096	SCHLITZ (BOTTLE) (REST IN HANDBOOK)	WI	4	
130	C-013-097	JACOB SCHMIDT BREWING CO. / CITY CLUB BEER	MN	6	
131	C-013-098	SCHMIDT'S BEER NO SUGAR NO GLUCOSE / SAME	MN	6	
132	C-013-101	SCHMIDT'S FAMOUS BEER / SCHMIDT'S WURZBURGER BEER	MN	4	
133	C-013-106	STANDARD (REST IN HANDBOOK)	NY	6	
134	C-013-107	STANDARD (REST IN HANDBOOK)	NY	4	
135	C-013-109	THE STANTON BREWERY INC. TROY, N.Y.	NY	4	
136	C-013-110	STERLING BREWERS INC. (REST IN HANDBOOK)	IN	8	
137	C-013-111	SOUTH BETHLEHEM BREWING CO. SUPREME BEER	PA	6	
138	C-013-112	TERRE HAUTE BREWING (REST IN HANDBOOK)	IN	4	
139	C-013-122	AMSTERDAM BRG. CO. INC. AMSTERDAM, N.Y. AMSTERDAM ALE (25 PIECES ALL GOOD TO VERY GOOD) (MIN BID \$25)	NY	6	
140	C-013-131	FORT PITT BEER AND ALE	PA	4	
141	C-013-132	GEM BEER MENASHA, WIS.	WI	6	
142	C-013-140	IRON CITY BEER	PA	4	
143	C-013-150	RHEINGOLD EXTRA DRY	NY	4	
144	C-013-166	CARLING	OH	4	
145	C-013-190	SCHAEFER AMERICA'S OLDEST LAGER BEER / SAME	NY	6	
146	C-013-201	BIRK BROS. BREWING CO.LINCOLN 7600 / BIRK'S SUPERB BEER	IL	4	
147	C-013-203	CHARTIERS VALLEY (REST IN HANDBOOK)	PA	4	
148	C-013-206	F.W. COOK CO. EVANSVILLE, IND. COOK'S BEER	IN	1	
149	C-013-207	COORS	CO	6	
150	C-013-208	COORS LIGHT	CO	8	
151	C-013-252	CONSUMERS SPECIAL BEER / NEWARK "OLDE TOWNE" ALE	OH	4	

April 2000 JFO Auction-Closing May 17, 2000- Name & Mem #:

152	C-013-260	DUTCH MAID BEER & OLD MULE ALE / SAME	NY	4	
153	C-014-001	BUCKEYE BEER (B IN CIRCLE)	OH	4	
154	C-014-003	FORT PITT BEER & ALE	PA	6	
155	C-014-005	HORLACHER'S ((A) SMOOTH SURFACE)	PA	6	
156	C-014-006	JONES BREWING CO. SMITHTON, PA. SATISFYING STONEY'S (WAITER) (A) LEFT-HANDED)	PA	6	
157	C-014-007	MANZ BEER	PA	1	
158	C-014-011	RHEINGOLD ((A) SMOOTH SURFACE)	NY	6	
159	C-014-011	RHEINGOLD ((B) GRILL SURFACE)	NY	4	
160	C-014-012	RHEINGOLD EXTRA DRY	NY	6	
161	C-014-013	ROCHESTER BREWING CO. (REST IN HANDBOOK)	NY	4	
162	C-014-016	RUPPERT BEER OLD KNICKERBOCKER BEER	NY	4	
163	C-014-018	SIMON PURE BEER ALE	NY	4	
164	C-014-025	RUPPERT BEER	NY	6	
165	C-014-027	BURKHARDT'S BEER MUG ALE		4	
166	C-014-032	BURKHARDT'S / BEER-MUG ALE SINCE 1880		6	
167	C-014-035	OLDE VIRGINIA PREMIUM BEER-POPULAR PRICE	VA	2	
168	C-015-001	CAMDEN BEER TASTES AS GOOD AS IT LOOKS!	NJ	8	
169	C-015-002	FORT PITT SPECIAL BEER	PA	6	
170	C-015-003	GENESEE OLD FASHIONED GOODNESS BEER & ALE	NY	6	
171	C-015-004	BE HAPPY WITH HARVARD ALE OR EXPORT	MA	6	
172	C-015-005	POUR ON THE IRON RALLY ROUND RETURNABLES / RALLY ROUND THE PIRATES	PA	4	
173	C-015-006	IROQUOIS BEVERAGE CORP., BUFFALO, N.Y. IROQUOIS ALE BEER (INDIAN)	NY	6	
174	C-015-007	PIEL'S LIGHT BEER	NY	4	
175	C-015-009	RUPPERT KNICKERBOCKER BEER / SAME	NY	2	
176	C-015-010	SCHAEFER AMERICA'S OLDEST LAGER BEER / SAME	NY	6	
177	C-015-012	VALLEY FORGE BEER / SAME	PA	4	
178	C-015-013	RHEINGOLD EXTRA DRY LAGER BEER	NY	6	
179	C-015-016	RHEINGOLD EXTRA DRY / SAME	NY	4	
180	C-016-002	IROQUOIS INDIAN HEAD BEER	NY	4	
181	C-016-006	RHEINGOLD EXTRA DRY	NY	4	
182	C-016-007	ROLLING ROCK PREMIUM BEER	PA	4	
183	C-016-009	SCHAEFER AMERICA'S OLDEST LAGER BEER / SAME	NY	4	
184	C-016-010	SCHAEFER FINE BEER / SAME	NY	6	
185	C-016-011	SCHOENLING BEER CINCINNATI'S FINEST PHONE CHERRY 4344	OH	6	
186	C-016-016	VALLEY FORGE BEER	PA	6	
187	C-017-001	ARROW BEER-IT HITS THE SPOT	MD	6	
188	C-017-003	DAWSON'S BREWERY INC. NEW BEDFORD, MASS. TIME OUT FOR DAWSON'S ALE & BEER / TIME OUT FOR DAWSON'S ALE & BEER	MA	4	
189	C-017-004	EHRET'S EXTRA BEER	NY	6	
190	C-017-005	FOX DE LUXE BEER	IL	8	
191	C-017-006	GRETZ BEER PHILA. (CONE TOP CAN WITH G & GRETZ BEER ON IT)	PA	4	
192	C-017-007	HABERLE'S BEER ALE / SAME	NY	6	
193	C-017-008	HANLEY'S FOR ALE	RI	4	
194	C-017-010	HUDEPOHL BEER CINCINNATI, O.	OH	2	
195	C-017-011	IROQUOIS INDIAN HEAD BEER	NY	6	

April 2000 JFO Auction-Closing May 17, 2000- Name & Mem #:

196	C-017-013	LEBANON VALLEY BEER (SHIELD)	PA	2	
197	C-017-016	MONARCH BEER	IL	4	
198	C-017-020	PABST BLUE RIBBON BEER (SHORT BOTTLE)	WI	6	
199	C-017-021	PABST BLUE RIBBON BEER (TALL BOTTLE)	WI	8	
200	C-017-022	PHOENIX BEER-ALE	NY	6	
201	C-017-024	PRIOR BEER	PA	6	
202	C-017-026	SCHAEFER BEER AT ITS' BEST / SAME	NY	6	
203	C-017-028	SCHOENLING BEER CINCINNATI'S FINEST PHONE CHERRY 4344	OH	6	
204	C-017-030	VALLEY FORGE BEER	PA	4	
205	C-017-031	WAYNE BEER ALE	PA	4	
206	C-017-034	TIME OUT FOR DAWSON'S / SAME	MA	4	
207	C-017-036	HOME BREWING COMPANY INC. RICHMOND, VA. RICHBRAU BEER	VA	4	
208	C-017-038	MOOSE BREWING CO. PENNSY BEER	PA	6	
209	C-017-045	FLOCK BREWING CO. WILLIAMSPORT, PA. "IT STANDS ON TOP"	PA	6	
210	C-017-052	ROCHESTER BREWING CO. GOLDEN OLD TOPPER ALE-BEER (MAN IN TOP HAT)	NY	6	
211	C-017-066	ATLAS PRAGER BEER GOT IT?? GET IT!!	IL	4	
212	C-018-002	DRINK ESSLINGER'S BEER-ALE (LITTLE MAN)	PA	6	
213	C-018-002	FORT PITT SPECIAL BEER-SOMETHING SPECIAL / OLD SHAY DELUXE BEER-FOR PARTICULAR PEOPLE (BLUE ON ALUMINUM)	PA	6	
214	C-018-004	INDEPENDENT MILWAUKEE BREWERY DRINK BRAUMEISTER "MILWAUKEE'S CHOICEST BEER"	WI	8	
215	C-018-005	IROQUOIS BEVERAGE CORP. BUFFALO, N.Y. IROQUOIS INDIAN HEAD BEER AND ALE (INDIAN HEAD)	NY	6	
216	C-018-008	R & H BEER-ALE	NY	6	
217	C-018-009	ROLLING ROCK PREMIUM BEER	PA	8	
218	C-018-010	THE WILLIAM SIMON BREWERY, BUFFALO, N.Y. SIMON PURE ALE AND BEER	NY	4	
219	C-018-015	DON'T SAY BEER SAY "FORT SCHUYLER"	NY	8	
220	C-018-017	TROMMER BREWING CO. BKLYN., N.Y. TROMMER'S WHITE LABEL "THE ALL MALT BEER" / SAME	NY	8	
221	C-019-001	CREMO ALE AND BEER	CT	4	
222	C-019-002	FORT PITT SPECIAL BEER-SOMETHING SPECIAL / OLD SHAY DELUXE BEER-FOR PARTICULAR PEOPLE (B) RED ON NICKEL)	PA	6	
223	C-019-003	GRETZ BEER (MAN ON HIGH WHEELER)	PA	6	
224	C-019-005	HUDEPOHL PURE LAGER BEER	OH	4	
225	C-019-006	INDEPENDENT MILWAUKEE BREWERY BRAUMEISTER SPECIAL PILSENER BEER	WI	6	
226	C-019-007	ROCHESTER BREWING CO INC. OLD TOPPER ALE-BEER THE FLAVOR THAT'S IN FAVOR (MAN IN TOP HAT) (VAR (B) NICKEL)	NY	6	
227	C-019-011	FORT PITT SPECIAL BEER / OLD SHAY DELUXE BEER	PA	4	
228	C-020-004	KAIER'S SPECIAL BEER UNION MADE / KAIER'S OLD DIAMOND ALE & PORTER UNION MADE	PA	6	
229	C-020-005	LEBANON VALLEY EXPORT BEER-ALE-PORTER (LV LOGO) / SAME	PA	6	
230	C-020-007	DRINK NEUWEILER'S FAMOUS BEERS ALLENTOWN, PA. / SAME	PA	4	
231	C-020-021	THE WM. PETER BREWING CORP.	NJ	6	
232	C-020-025	ELIZABETH BREWING CORPORATION AT ELIZABETH, N.J. / ELIZABETH BREW (BEARDED MAN WITH HAT) (VERY VERY WORN)	NJ	1	
233	C-024-001	HOFFMAN (H IN LOGO)	NJ	6	
234	C-032-001	RAINIER BREWING COMPANY (REST IN HANDBOOK)	CA	6	
235	C-032-002	TACOMA BREWING CO. (REST IN HANDBOOK)	WA	4	
236	C-036-999	MOLSON'S / SAME (CANADIAN)		4	
237	D-005-002	BLATZ	WI	6	

April 2000 JFO Auction-Closing May 17, 2000- Name & Mem #:

238	D-006-001	BRUCK'S	OH	6	
239	D-006-002	SCHLITZ / SAME	WI	6	
240	D-009-004	KINGSBURY	WI	6	
241	D-012-003	NEWMAN / PITTSBURG (NO H)	PA	4	
242	D-012-999	BUAG-BUSH CO. / CINCINNATI	OH	4	
243	E-001-011	MOUNT CARBON ALE-PORTER / MOUNT CARBON LAGER BEER	PA	4	
244	E-002-010	ADAM SCHEIDT BREWING CO. / VALLEY FORGE BEER	PA	8	
245	E-002-016	KEEP "PRIMO" IN YOUR HOME / ITS BEST FOR YOU JAMES ESPOSITO		4	
246	E-002-999	H. KIRSCH & CO. BROOKLYN N.Y. / SAME	NY	4	
247	E-003-005	FISHER BEER SINCE 1884 / SAME	UT	8	
248	E-003-011	DRINK GOOD OLD HOOSIER BEER / SAME	IN	6	
249	E-003-017	SIOUX CITY BREWING CO. HEIDEL-BRAU / WESTERN BREW BEST IN THE WEST	IA	6	
250	E-003-020	STANDARD BREWING CO. INC. ROCHESTER, N.Y. / STANDARD ALE PORTER-HALF & HALF	NY	4	
251	E-004-005	DRINK ARROW BEER / IT HITS THE SPOT (IN ARROW)	IN	2	
252	E-004-009	ATLAS B'R'G. CO. CHICAGO CANAL 6200 / IMPORTED QUALITY REGULAR PRICE PRAGER BEER	IL	6	
253	E-004-021	CENTLIVRE BRG. CORP. FORT WAYNE / NICKEL PLATE BEER	IN	4	
254	E-004-040	GOLDEN WEST BREWING (REST IN HANDBOOK)	CA	6	
255	E-004-047	HUDEPOHL BREWING CO./CINCINNATI OHIO (SCREWDRIVER TIP)	OH	2	
256	E-004-053	LANG'S EXTRA FINE ALE / LANG'S EXTRA FINE BEER	NY	6	
257	E-004-055	LION BREWERY OF N.Y.C. / SAME	NY	4	
258	E-004-057	MANHATTAN BRG.CO. CHICAGO, ILL./OLD MANHATTAN LAGER BEER	IL	6	
259	E-004-075	ROCHESTER BREWING CO. / OLD TOPPER ALE	NY	2	
260	E-004-127	THE MUESSEL BREWING CO. SOUTH BEND, IND.	IN	6	
261	E-004-132	PRIMA COMPANY BEVERAGES / CHICAGO, PHONE LINCOLN 4302	IL	6	
262	E-004-199	TROMMER'S MALT BEERS / SAME	NY	4	
263	E-004-257	SOUTH BEND BEV. & ICE ASS'N. / DRINK HOOSIER BREW	IN	6	
264	E-004-358	THE ROYAL PRODUCTS CO. 629 E. LIVINGSTON J.A. SWEENEY PROP. / FRUIT JUICES-MALT-HOPS PHONE MAIN 4326		4	
265	E-004-999	THE DOUBLE EAGLE BOTTLING CO. / DOUBLE EAGLE GINGER BEER	OH	6	
266	E-004-UL	SCHNEIDER'S GINGER ALE / PHONE FOXCROFT 9-8440-1-2 BROOKLYN, N.Y. (SCHNEIDER'S PROHIBITION SODA)	NY	6	
267	E-005-UL	FALSTAFF (IN SHIELD) B & M DISTRIBUTING CO. E. M. MCMULLEN FALSTAFF BEER BURKE, S.D.	SD	8	
268	E-006-025	"DON'T SAY BEER SAY FORT SCHUYLER"	NY	6	
269	E-006-151	STAR BREWERY COMPANY VANCOUVER, WASHINGTON / HOP GOLD BEER HOP GOLD BEER	WA	6	
270	E-007-007	M.K. GOETZ BREWING CO. ST. JOSEPH, MO. / DRINK COUNTRY CLUB COUNTRY CLUB SPECIAL	MO	6	
271	E-007-010	PRIMA COMPANY BEVERAGES CHICAGO PHONE LINCOLN 4302	IL	4	
272	E-007-UL	CONSUMERS BREWING CO. OF NEW YORK-LIMITED / COLUMBIA STOUT	NY	4	
273	E-009-037	KRANTZ BREWING CO. TOLEDO-FINDLAY, O. / KRANTZ OLD DUTCH THE GOOD BEER	OH	4	
274	E-011-013	STEGMAIER BREWING CO. (REST IN HANDBOOK)	PA	6	
275	E-013-005	ENTERPRISE BREWING CO. FALL RIVER, MASS. / THE BEST OLD TAP ALE	MA	2	
276	E-014-005	ACME BREWING CO. LOS ANGELES / ACME BEER	CA	6	
277	E-014-022	BILLINGS BREWING CO. BILLINGS, MONTANA	MT	6	
278	E-014-086	FESENMEIER BRG. CO. (REST IN HANDBOOK)	WV	6	

April 2000 JFO Auction-Closing May 17, 2000- Name & Mem #:					
--	--	--	--	--	--

279	E-014-167	FRED KOCH BREWERY DUNKIRK, N.Y. / SAME	NY	6	
280	E-014-170	KRUEGER CREAM ALE FINEST BEER / SAME	NJ	6	
281	E-014-285	TIP A "TOPPER" TOPPER BEER / SAME	NY	10	
282	E-014-296	DRINK WAUSAU BREWING CO. BEER / ADEL BRAU SCHOEN'S OLD LAGER	WI	6	
283	E-014-307	D.G. YUENGLING & SON, INC. (REST IN HANDBOOK)	PA	4	
284	E-014-351	DREWRY SOUTH BEND, IND. / DRINK DREWRY ALE-LAGER BEER	IN	6	
285	E-014-384	DRINK GOOD OLD HOOSIER BEER / SAME	IN	2	
286	E-014-456	DRINK WAUSAU BREWING CO. BEER / SAME	WI	6	
287	E-014-515	DRINK KAMM'S QUALITY BEER / SAME	IN	6	
288	E-014-574	WEHLE COLONIAL ALE / WEHLE MULE HEAD ALE	CT	4	
289	E-014-614	HORNELL BRG. CO. INC. K.D.K. CREAM ALE / OLD RANGER BEER AND ALE	NY	6	
290	E-014-629	MUESSEL BREWING CO. SILVER EDGE / SAME	IN	6	
291	E-014-999	"FRESH UP" WITH SEVEN-UP / SAME		8	
292	E-014-999	SIMPSON SPRING BEVERAGES / SAME		6	
293	G-001-008	EBLING'S EXTRA THAT GRAND OLD BEER (BOTTLE)	NY	2	
294	G-001-016	LATROBE BREWING CO. LATROBE, PA. LATROBE BEER (BOTTLE)	PA	2	
295	G-001-021	PABST BLUE RIBBON BEER (BOTTLE)	WI	8	
296	G-002-009	HUDEPOHL BREWING (REST IN HANDBOOK)	OH	8	
297	G-003-003	HAMM'S BEER "LEADS THEM ALL"	MN	6	
298	H-002-004	BERGHOFF FORT WAYNE	IN	6	
299	H-002-099	BUDWEISER SMITH-REID DISTRIBUTING CO.		6	
300	H-005-011	FLOCK BREWING CO. / IT STANDS ON TOP	PA	6	
301	I-007-011	CROFT ALE	MA	8	
302	I-007-014	FEIGENSPAN P.O.N. BEER & ALE	NJ	4	
303	I-007-017	GENESSEE BREWING CO. (REST IN HANDBOOK)	NY	4	
304	I-007-023	KINGS BREWERY, INC. BROOKLYN, N.Y. KINGS BEER AND ALE	NY	6	
305	I-007-027	THE FAMOUS OLD NARRAGANSETT BANQUET ALE	RI	4	
306	I-007-036	JACOB RUPPERT BREWERY NEW YORK	NY	6	
307	I-007-055	OLD DUTCH BEER-ALE BROOKLYN, N.Y.	NY	4	
308	I-007-999	UNITED CO-OPERATIVE INC. INDIANAPOLIS, IND.	IN	6	
309	I-007-999	ALWAYS DRINK KEMP'S SUN-RAYED PURE TOMATO JUICE		6	
310	I-017-144	WAUSAU BREWING CO. WAUSAU, WIS. / SCHOEN'S OLD LAGER	WI	6	
311	I-019-LOT	(3 PIECES) #15 BLATZ #18 GOETZ #9 PABST		6	
312	I-020-LOT	(3 PIECES) #6 HAMMS #17 HAMMS #8 STORZ		6	
313	J-007-001	FOR BEER IN CANS MARKED KEGLINED		6	
314	J-009-001	ADOLPH COORS (REST IN HANDBOOK)	CO	6	
315	L-004-021	SCHLITZ VITIMAN D (STUBBY) (REST IN HANDBOOK)	WI	4	
316	M-001-025	HAFFENREFFER & CO. (REST IN HANDBOOK)	MA	8	
317	M-009-001	BALLANTINE (3 RINGS) BEER (WHITE ON GREEN)	NJ	10	
318	M-029-007	STERLING MELLOW BEER		6	
319	N-009-035	HUSTINGS BEVERAGES LIQUORS-BEER-ALE	WI	10	
320	O-004-024	SCHAEFER BEER AT ITS BEST	NY	6	
321	O-004-999	DRINK MISSION BEVERAGES		8	
322	P-019-999	DRINK GOOD OLD BRIAR CAVE FINE RYE WHISKEY SOLE OWNERS SOUTHER DISTRIBUTING CO. JACKSONVILLE, FLA.	FL	2	

2000 Just For Openers Membership Directory

#	Last Name	First	Spouse	Street	City	St	Zip	Phone/Fax	E-Mail	Specialties
920	Adler	Russ	Jill	W11307 Hwy V	Lodi	WI	53555-9999	(608) 592-6766	adlers@chorus.net	Just Getting Started, Old Cap Lifters
679	Alcorn	Dewaine	Irma	4416 Waterbury Ln	Lincoln	NE	68516-1520	(402) 489-7564	dialcorn@navix.net	Nebraska & Minnesota Beer Openers
230	Anheuser-Busch Co Inc	Corporate Library		PO Box 1828 Bechtold Station	Saint Louis	MO	63118-0828	(314) 577-2000		(Write Attn. Mary Butler)
751	Arber	Bill	Barbara	11162 Broadway St	Alden	NY	14004-9515	(716) 681-4833	wrabra@aol.com	Any Openers
619	Archer	John	Christi	353 Concord Dr	Oregon	WI	53575-3616	(608) 835-3728		"A" & "B" Types & Misc
810	Armstrong	Steve		PO Box 741	Kamiah	ID	83536-0741	(208) 935-2317	sunset@cybrquest.com	Montana & Idaho & H-8s & L-1s
771	Atkinson	Murray	Pam	9096 E Bella Vista Ct	Floral City	FL	34436-2401	(352) 637-6016	murraypam@hitter.net	Corkscrews & Beer Openers & Sterling Openers & Figurals
415	Bachmann	Kurt	Debbie	57883 Hanover Rd	Washington	MI	48094-3083	(810) 677-3284	kbach@clearr.com	All Michigan Breweriana
729	Bailey II	Eddie	Carol	4408 NE Sunnybrook Ln	Kansas City	MO	64117-1922	(816) 459-9607		Any Advertising Openers and Figurals
888	Bandy	Jack	Betty	PO Box 7545	Van Nuys	CA	91409-7545	(818) 892-7359	bandy-jack@msn.com	Corkscrews
944	Bareham	Peter		10 The Downage	Grovesend, Kent	ENG LAN D	PA11 7NB	44(0) 1474 363774		Crown Cork Bottle Openers
801	Barr	David		3612 Riddle Ct	Bridgewater	NJ	08807-5553	(908) 725-5083	dave@ecilps.e.net	Beer-US
406	Barren	Mark		6141 Tachi Dr	Newfane	NY	14108-9517	(716) 778-9724		New York Openers
416	Bates	Mead	Rosemarie	23 Gardiner St	Darien	CT	06820-5111	(203) 357-0499		Manufacturer of Bottle Openers (Cymba Inc)
951	Bauer	Gary	Barbara	3533 W Millbrook Rd	Mount Pleasant	MI	48858-9543	(517) 866-2281	beerhunt@mi-brew.com	Michigan Beer Openers of All Types, website www.mi-brew.com
859	Bavington	Doug		1092 Transit RD	Victoria British Columbia	CAN ADA	V8S 5A2	(250) 598-3929		"A" "B" "E" "F"
585	Behnken	Ron	Jan	405 S Brewer St	Manchester	IA	52057-2206	(319) 927-2116	rjbehnken@connect.net	Beer Openers with Advertising Only
389	Benjamin	Marc	Patricia	167 Nixon Beach Rd	Edenton	NC	27932-9447	(252) 482-2099		One Of Each Type
903	Berg	Roger	Carolyn	14835 SW Gearhart Dr	Beaverton	OR	97007-6618	(503) 641-1568	norseberg@cs.com	Mechanically Unique
692	Berlin	Bronson		1701 Alta St	San Luis Obispo	CA	93401-3004	(805) 541-0151	brawny36@aol.com	California Beer Openers
841	Bestard	Richard		PO Box 1334	Glendora	CA	91740-1334	(626) 914-4664		B,C,D,E
202	Biehl	Larry	Fran	448 Crandon Ave	Calumet City	IL	60409-2202	(708) 891-4269	gsu0031@uxa.ecn.bgu.edu	All Openers Esp "F" Types
786	Bittermann	John		621 Homestead	Joliet	IL	60435-5105	(815) 725-7770	jebitter@aol.com	All Illinois Openers & Breweriana
699	Blalock	Lin	Shirley	908 Wyldewood Rd	Durham	NC	27704-1602	(919) 477-1716		NEHI or NE-HI
844	Blatz	Leo	Laurie	2829 Sheridan Dr	Tonawanda	NY	14150-9420	(716) 836-5025	leo@travelnurses.com	Blatz-Will Buy or Trade
894	Bliss	Homer	Cathryn	15475 Cape Dr N	Jacksonville	FL	32226-1209	(904) 757-5567	hbliss@bellsouth.net	Wall Mount Figural Bottle Openers
767	Bohle	Mylen	Diane	655 NE Ochoco Ave	Prineville	OR	97754-1230	(541) 447-4295		All Bottle Openers & All Corkscrews
652	Bolam	Bob	Kathy	58 Hillary Dr	Rochester	NY	14624-5245	(716) 889-2561		Beer, Soda, Can Openers & Corkscrews

2000 Just For Openers Membership Directory

#	Last Name	First	Spouse	Street	City	St	Zip	Phone/Fax	E-Mail	Specialties
745	Boller	Jack	Alice	7208 Green Meadow Dr	Fort Worth	TX	76180-6712	(817) 281-5585		All Openers, Corks & Corkscrews
478	Bolton	Fred	Sue	3015 Cadencia St	Carlsbad	CA	92009-8309	(760) 942-5765		Type "E-14" Openers
709	Bongiovanni	Robert	Denise	154 Springers Mill Rd	Cape May Court House	NJ	08210-2039	(609) 465-7959	bonge@dela.net.com	Beer, Soda, Figural
195	Braeuner	Ray	Jerine	PO Box 728	Festus	MO	63028-0728	(314) 937-6805		
922	Brand-Papcke	Elizabeth	Darvon	N7137 Hwy P	Whitewater	WI	53190-9999	(608) 883-2208		Mostly Milwaukee Breweries & Other Wisconsin Breweries
914	Brim	Dave	Kathy	624 W College Ave	Decatur	GA	30030-3609	(404) 687-0401		Starr Bottle Openers from Brown Mfg. Co.
847	Briske	Rick	Judy	967 Milford St	Cary	IL	60013-1967	(847) 516-9635	richard.brisk e@apropos.coa	Figural & Flat
528	Britton	Dick	Bonnie	2902 Lacota Rd	Waterford	MI	48328-3127	(248) 683-2134		Anything that Opens a Can, Jar or Bottle, is U.S. Made & Not a True Figural or Wall Mount (Type O)
675	Broders	Ed	Patti	10220 Westwood Ave	Baton Rouge	LA	70809-3243	(504) 293-2373	ebroders@franklin-press.com	Louisiana Openers & K-Types
912	Brown	Bob	Martha	712 N 12th St	Mount Vernon	IL	62864-2804	(618) 2427600		Beer Openers
502	Brunner	William	Jo Ann	8773 W Mineral Point Rd	Mount Horeb	WI	53572-1229	(608) 798-2793		Wall Mounts & "M-29-30-83"
642	Bryant	Don	Loretta	3011 Firestone Dr	Sterling Heights	MI	48310-6025	(810) 264-6839		Michigan Openers
1	Bull	Don	Bonnie	PO Box 596	Wirtz	VA	24184-0596	(540) 721-1128	corkscrew@bullworks.net	Corkscrews, Knives, Ice Picks & Letter Openers
749	Burgart	Paul		52-A Samoset Ave	Hull	MA	02045-2514	(617) 925-1057	farm2sea@aol.com	Mass & Iowa Openers & Figurals
957	Burke	Richard	Rivelle	4 Hastings St	Framingham	MA	01701-7866	(617) 374-0302		Beer Can Openers
827	Burkhardt	David		c/o Anchor Brewing Co 1705 Mariposa St	San Francisco	CA	94107-2334	(415) 863-8350		
805	Burritt	Lew	Millie	125 Vogt Dr	Belle Chase	LA	70037-2625	(504) 394-3567	dixiemanager@earthlink.net	All Dixie Brewing Co Openers
822	Burruss III	John		318 Lost Oak Dr	Canyon Lake	TX	78133-5720	(830) 899-7241		A-1, A-35, B-14, B-24, C-13, G-1, M-3
824	Calhoun	Mike	Linda	424 Joilet Rd	Marquette Heights	IL	61554-1426	(309) 382-2378		Openers & Corkscrews All Types
929	Campbell	Alec	Nancy	PO Box 1323	Crossfield Alberta	CAN ADA	T0M 0S0	(403) 946-5293	ac_ent@telusplanet.com	All Types of Bottle Openers
690	Campbell	Bob	Elayne	12117 N 138th St	Scottsdale	AZ	85259-3760	(480) 767-8478	bobcaz8@aol.com	Beer Advertising Openers
4	Cardone	Joe	Mary	917 Gainsborough Rd	Dayton	OH	45420-3709	(937) 294-3018		Pabst Blue Ribbon Openers
959	Carey	John		113 Parkwood Rd	Verona	PA	15147-2813	(412) 793-3907	jackc1022@aol.com	Cast Iron, Wall Mount, Flat-Wire
530	Carlson	Brian		6938 Upper 5th St N	Oakdale	MN	55128-6719	(612) 739-1608	bmitchell@mno.com	All Esp Hamm's
587	Cartwright	John	Cheryll	17 Flag Way	Paso Robles	CA	93466-3450	(805) 226-9270	jcartwright@tcsn.net	"A"s, "B"s (Beer & Soda) & Golden West, Port Townsend & Rainier Brewieriana

2000 Just For Openers Membership Directory

#	Last Name	First	Spouse	Street	City	St	Zip	Phone/Fax	E-Mail	Specialties
653	Chalk	Jim	Marguerite	3049 Westminister Dr	Saint Charles	MO	63301-0656	(314) 946-2392	jgc_vmc@prodigy.com	All Openers
733	Clark	Dick	Jackie	8410 S Ave D	Yuma	AZ	85364-8441	(520) 783-2243		B-24/E-4/G-9/I-22
939	Clark	William	Theresa	689 Center Ave	River Edge	NJ	07661-2406	(201) 262-7397		Beer, Soda, Antique
952	Click	Floyd	Dru Ann	1615 Hughes Shop Rd	Westminster	MD	21158-2915	(410) 876-7362	fclick@randomhouse.com	All
927	Clovis	Steven	Sharon	3246 Woodfield Dr	Walworth	NY	14568-9442	(315) 986-2857		
649	Collier	Wayne	Jeanne	13317 Vista Aroyo	San Antonio	TX	78216-2243	(210) 479-2861	wcollier@txdirect.net	Figural Openers
345	Counciller	Dr Harry	Carol	937 Atir Ln	Greenfield	IN	46140-2828	(317) 468-0227		General (Beer & Brewery Related) Any Beer & Soda Openers
765	Cower	Gary	Darlene	144 Lovejoy Rd	Harpursville	NY	13787-1832	(607) 693-2645		
204	Cress	David	Susan	1816 Elizabeth St	Janesville	WI	53545-2704	(608) 752-7262	dave.cress@amerock.com	All Kinds - Unusual Shapes
531	Creuziger	Dick		1226 Grove Ave	Racine	WI	53405-3043	(262) 633-9245		Pabst & Coca-Cola
872	Cushman	Gary	Donna	PO Box 272	Chelsea	VT	05038-0272	(802) 685-4664	ne.breweriana@questnet.com	"M-1"s & "M-2"s & "M-3"s
870	Daniel	Christian	Michelle	1313 Old Lamplighter Way	Wilmington	NC	28403-3431	(910) 395-9316	christiandan898@pol.net	Corkscrews
246	Danziger	Herb	Camille	550 Cherry Ct	Birmingham	MI	48009-1459	(248) 646-9470	hkdcfd@aol.com	Corkscrews & Silver Top Beer Openers
5	Darocy	Alex		9723 Bluestem Path	Prunedale	CA	93907-1006	(831) 632-2903		
953	Davis	Clark	Vicky	51075 Calle Paloma	La Quinta	CA	92253-2859	(760) 564-0407		Everything, Advertising Unique
91	Deachman	Gary		PO Box 438	North Woodstock	NH	03262-0438	(603) 745-2347		B-1-2-3, M-1-2, New Hampshire Openers, Bottle Shaped, L-2-4
889	Denney	Clayton	Barbara	630 Nottingham Dr	Hampton	VA	23669-1618	(757) 851-4258		Toys & Coke
817	Desrosiers	Michel	Marguerite	16315 Av Hebert	Saint Hyacinthe, Quebec	CAN ADA	J2T 3W4	(450) 774-3200	marigo@vitamina.ca	Corkscrews
960	Dickson	Marvin	Sharon	27840 N Hayden Rd	Scottsdale	AZ	85255-9214	(480) 502-8546		Beer Openers & Corkscrews & All Types
918	Dieterich	Andy	Marlene	5315 Emerson Ave S	Minneapolis	MN	55419-1112	(612) 823-6918	amdieterich@prodigy.net	Wisconsin & Minnesota Brewery Openers
40	Donoghue	John		PO Box 311	Lynn	MA	01905-0511	(781) 595-3499		Anything that Opens a Can or a Bottle
7	Dummer	Duane	Carol	910 N Palmatory St	Horicon	WI	53032-1011	(920) 485-3395		Figural Openers, Corkscrews, All Types of Interesting Openers
663	Dutcher	Mickey	Ellie	134 Cortland-McLean Rd	Cortland	NY	13045-9803	(607) 838-3447	medutcher2@aol.com	Figural 3-D Cast Iron & Iroquois Openers
636	Dye Jr	Ralph		PO Box 178	McConnellsville	OH	43756-0178	(740) 962-4776		Slides
934	Eichhorn	Edward	Theresa	2010 Sandia Ct	Lusby	MD	20657-4018	(410) 326-6378		Breweriana All Areas
763	Ellison	Dana	Caye	PO Box 298	Ludlow	VT	05149-0298	(802) 228-3196		All Advertising Openers
738	Emme	Sandra		PO Box 1454	Upper Marlboro	MD	20773-1454	(301) 627-8207	emmyaward@yahoo.com	Corkscrews, Figural Flats & Standing Figurals
823	Engelbrecht	Ken	Susan	22 Rainey Rd	Crawford	TX	76638-3317	(817) 486-2230		Advertising, Beer, or All Old Unusual or Unique Openers

2000 Just For Openers Membership Directory

#	Last Name	First	Spouse	Street	City	St	Zip	Phone/Fax	E-Mail	Specialties
95	Enloe	Glen	Pattie	805 Tepee Dr	Independence	MO	64056-2146	(816) 796-9965	enloes@junod.com	Beer Openers & Cigar Box Openers
828	Ennis	Roy	Rowene	HC 1 Box 297	Ford	WA	99013-9501	(509) 951-3910		Beer, Soda & Figural
948	Erickson	Robert	Janice	3061 East Arm Rd	Ely	MN	55731-9999	(218) 365-4907		Beer Openers
412	Feisel	Lyle	Dorothy	977 Powderhouse Rd	Binghamton	NY	13903-9307	(607) 723-4273	feisel@binghamton.edu	Advertsing Beer Openers
814	Ferguson	John	Denise	3305 Five Points Rd	Indianapolis	IN	46239-9574	(317) 356-3130	fergkate@aol.com	Indianapolis Openers & All Breweriana
865	Fisher	John		PO Box 153	Benedict	MD	20612-0153	(301) 274-3340	burntoak@gateway.net	Pennsylvania Openers & Breweriana
8	Ford	Jack		5351 Boyd Ave	Oakland	CA	94618-1111	(510) 655-5393		A-Types & Rainier Brewing & Hawaiian Brewing
723	Fossette	John	Mandie	2549 Sixth Ave	Sacramento	CA	95818-3905	(916) 456-9607		Type "A" Openers
498	Fuerst	Norma	Tom	11 Oak Valley Rd	Bloomington	IL	61704-7438	(309) 829-6192		"Joseph Schlitz" & All Openers
884	Fulks	Andy		PO Box 92	Whitestown	IN	46075-0092	(317) 769-5355	ajf5577@aol.com	Starr & Starr X Wall Mounts
955	Gatewood	Butch		622 Marian St	Wenatchee	WA	98801-3163	(509) 663-2720		Have about 400 All Types, but excited about more!
604	Gausepohl	David		3488 Ridgewood Dr	Erlanger	KY	41018-2887	(606) 371-4415	beerdave@fuse.net	All Beer Openers Especially Kentucky Micros & Midwest Breweries
333	Gauvin	Paul	Gail	24 Strawberry Ln	Manchester	CT	06040-6930	(860) 646-9722	mtkneo@aol.com	Connecticut Beer Openers & Maine Soda
958	Gerick	Robert		629 N Mohawk Ave	Ypsilanti	MI	48198-3929	(734) 482-5640	rwg629@aol.com	Collect Beer & Soda Openers from the Great Lakes Region
192	Goff	John	June	577 Brookhaven Ct	Kirkwood	MO	63122-3003	(314) 966-3211		Beer, Brass & Beautiful
605	Gormally	Tom	Phyllis	100 Nelson Place	Westfield	NJ	07090-4035	(908) 233-8867	william.gormally@gte.net	"C"- "E"- "G"- "H"- "I"- "J"
724	Goss	Janet	John	804 Phoenix Ave Trlr 1W	Helena	MT	59601-0856	(406) 442-2390	kgoss@rcisys.net	M-3, G-9, E-14
401	Graff	Fil	Robbie	10111 Lincoln Way W	Saint Thomas	PA	17252-9513	(717) 369-3577	fgraff@epix.net	One Of A Type
348	Gregg	Eldon	Carol	1714 Henry Dr	Hays	KS	67601-2659	(785) 628-1595	c&egregg@media-net.net	Openers
592	Grignon	Jean		344 Principale	Eastman, Quebec	CAN ADA	JOE 1P0	(450) 297-3740	jeangrignon@videotron.ca	All Corkscrews & Openers
890	Gritton	Charles	Hazel	2740 Richmond Ave	Des Moines	IA	50317-8733	(515) 266-5482		Beer, Soda Pop, General Kitchen Openers
837	Grubbs	George	Norma	286 Weeping Oak	Shreveport	LA	71106-7682	(318) 797-0128		Openers-Trays-Glasses Lighters
643	Gruver	Tim	Tonie	129 Oakdale Dr	Zelienople	PA	16063-9309	(724) 452-0196		Old Beer Openers & Corkscrews
666	Hall	John	Anna	2562 Hill Ct	Sebring	FL	33872-4232	(863) 385-2592	halann@ct.net	A-12s
625	Halverson	H Keith	Anne	1528 W 21st St	Merced	CA	95340-3430	(209) 723-1738		All "I" Types
931	Hamilton	Dan	Joan	1410 Terrace Dr	Madison	IN	47250-2952	(812) 265-5681	hamilton@seidata.com	All
651	Hanold	Bill	Karen	RR 13 Box 36-B	Bloomington	IL	61704-8962	(309) 828-9252	bkhanold@aol.com	All Types
258	Hansen	Harvey	Jo Ann	2300 Jefferson St	Two Rivers	WI	54241-2208	(920) 794-7026		Beer & Coca-Cola Openers
606	Hanson	Ray	Pat	2817 Grand Oak Dr	Garland	TX	75044-7859	(972) 530-0400	rfhanson@home.com	"A" & "B" Openers, Corkscrews

2000 Just For Openers Membership Directory

#	Last Name	First	Spouse	Street	City	St	Zip	Phone/Fax	E-Mail	Specialties
208	Harding	Russ	Sylvia	2665 Tamora Way	Colorado Springs	CO	80919-3570	(719) 599-3378	russ_harding@agilent.com	
13	Haydock	Herbert	Helen	1660 2nd Ave S	Wisconsin Rapids	WI	54494-4705	(715) 423-8995		All Breweriana
947	Haynes	Wilford	Darlene	5199 Lucinda Dr	Prescott	MI	48756-9137	(517) 873-4732		All With Advertising, Unusual, Etc
748	Hedges	Robert	Leticia	934 W Woodcrest St	Bloomington	CA	92316-1534	(909) 875-3786		All Openers
149	Hibbeler	Ollie	Shirley	298 Highline Dr	Lake Ozark	MO	65049-8924	(573) 365-3875	hibol@mail.iakeozarks.net	P-1 Corkscrews / Missouri / One-Of-A-Each-Style
629	Himes	Al	Marilyn	1125 E Sandusky St	Findlay	OH	45840-6477	(419) 422-4622	alhimes1@junocom	C.I. Figural, Old Can Openers & All Types Bottle Openers
725	Hoesch	Kenny	Ruby	PO Box 299 55 E Main	Zeeland	MI	49464-0299	(616) 772-1683	solomon@eagle-design.com	Cigar Box Openers
261	Hoffman	Ben	Cornelia	213 Simmons Rd	Perkiomenville	PA	18074-9587	(610) 287-8243		Pennsylvania & States Bordering PA Openers & Corkscrews
760	Hoffman	David	Jami	929 W Broad St	Williamstown	PA	17098-9501	(717) 647-7106	djkhoffm@epix.net	Any Beer Openers I Can Find
476	Horn	Harry	Rose Mary	3113 Smoky Ct	Sacramento	CA	95826-4147	(916) 362-3590	rosemh@jps.net	A-13 & E-4
932	Hoyt	Jim		630 Pinefrost Dr	Monroeville	PA	15146-1653	(412) 372-5070		Beer Bottle Shaped Openers & Beer Adv. Corkscrews
907	Huber	Mike	Deb	176 Suncoast Dr	McCook Lake	SD	57049-4016	(605) 232-4364	huberm@pionet.net	South Dakota, Iowa, Nebraska Openers
774	Hubers	Harley	Cindy	27472 376th Ave	Harrison	SD	57344-5000	(605) 243-2260	hchubers@midstatesd.net	Any Kind of Openers
949	Hunt Jr	W E	Archer	109 Oakland Place	Lynchburg	VA	24503-9999	(804) 384-9570	weh@cbh.com	Foreign Bottle Openers
403	Hupp	James	Anita	6949 Hyde Park Dr	San Diego	CA	92119-2208	(619) 460-6478		Beer / Hotels / Soft Drinks / Cast Iron / Corkscrews
925	Irrig	William	Nancy	6406 Whippany Way	Burke	VA	22015-3427	(703) 455-9009	wirrig@aol.com	All Domestic
853	Jacobsmeier	Ed		7716 Dunbarton Ave	Los Angeles	CA	90045-1030	(310) 670-4169		Beer Openers
110	Jantos	Carl	Ruth	7025 Kevin Dr	Bethel Park	PA	15102-3913	(412) 833-4866	cjantos@icubed.com	Western PA Openers
538	Jarrell	Roger	Janice	1500 Sedwick Rd	Durham	NC	27713-2626	(919) 544-7787		West Virginia, Texas, & Southern Openers & Corkscrews
700	Jarrell	Taylor		1500 Sedwick Rd	Durham	NC	27713-2626	(919) 544-7787		West Virginia, Texas, & Southern Openers & Corkscrews
181	Jay	Norm	Judy	839 James Ct	Wheaton	IL	60187-6344	(630) 690-1565		All Openers & Corkscrews
213	Johnson	Art	Eileen	155 Hartford Ave E	Mendon	MA	01756-1119	(508) 473-2780	eejafj2@telegam.infi.net	"M-3" "Slide-Out" Openers & "M-73" "Slide-Out" Opener/Corkscrews
926	Johnson	Edward		1290 Poquonock Ave	Windsor	CT	06095-1811	(860) 688-6795		Connecticut Openers esp. from Hartford, certain other New England & New York Breweriana

2000 Just For Openers Membership Directory

#	Last Name	First	Spouse	Street	City	St	Zip	Phone/Fax	E-Mail	Specialties
445	Johnson	Nick	Renae	4708 Spiser Ln	Wichita Falls	TX	76302-3509	(940) 322-1696	njohnson@w f.quik.com	Any Beer Items from Spokane WA and Pacific NW
660	Johnson	Tom	Betty	922 Bailey St	Jackson	MN	56143-1449	(507) 847-2828	tbj@rconnec t.com	Bottle - Can - Jar Openers
569	Johnson Jr	Art	Nancy	347 E Orange St	Lancaster	PA	17602-2916	(717) 394-4117		All Philadelphia Openers & Corkscrews (Beer, Soda or Whatever)
520	Jones	Odis	Janet	2946 W 7 St	Jacksonville	FL	32254-1908	(904) 695-0643		All Kinds
864	Joseph	Jon	Joanne	1196 Rostraver Rd	Belle Vernon	PA	15012-4554	(724) 929-7723		Beer & Pop
860	Jung	Paul	Joan	PO Box 425	Bechtelsville	PA	19505-0425	(610) 367-0239		M-1 & M-2 & L-1 & Jung Brewery Openers
893	Kaiser	James	Cheryl	59 N Walnut St Ste 301	Mount Clemens	MI	48043-5652	(810) 469-8687 F(810) 469-3778	kaiserhof@h ome.com	Detroit, Mt Clemens & Port Huron Michigan (Pre-Pro)
446	Kassahn	Darrel		610 S Lafayette Ave	Bremerton	WA	98312-4553	(360) 479-0161	dkassahn@k rl.org	
11	Kaye	Ed	Eileen	7077 Cedarhurst Dr	Fort Myers	FL	33919-6703	(941) 590-3068		Type "A-9" Beer/Non- Beer
876	Kehring	Erwin	Shirley	8164 N Denmark Ct	Milwaukee	WI	53224-2999	(414) 354-7605		All Openers
321	Keown	Vic	Mary Ann	10547 Mert St	Saint Ann	MO	63074-3433	(314) 428-6343		"M-3"s (Beer & Non- Beer)
539	Kimmons	Mike	Jan	3801 Elledge Dr	Shawnee Mission	KS	66205-1353	(913) 236-5441		Pre-Pro, Esp Kansas City
727	King	Charles	Karen	32 Amsterdam Ave	Glenmont	NY	12077-3630	(518) 767-2005	king@albany .net	Albany, Troy, Schenectady, Cohoes, Amsterdam, Hudson, NY Breweries
627	King	Dennis		PO Box 666	Lake Placid	NY	12946-0666	(518) 523-2762		Anything Harvard Brewing Co, N-Style Openers, M-1-2-3
267	Kirkpatrick	Charles	Janice	295 Leyden St	Denver	CO	80220-5951	(303) 333-9625		Corkscrews
703	Knapp	Joseph		211-A Berbro Ave	Upper Darby	PA	19082-2014	(610) 352-5055		Pennsylvania, Anheuser-Busch & Root Beer Openers
269	Koch	Bob	Mickey	1510 Ariana St Lot 450	Lakeland	FL	33803-6930	(863) 682-8145		All Kinds
753	Kopp	Richard	Martha Jane	14419 Woodcrest Dr	Rockville	MD	20853-2336	(301) 460-4272		Beer Advertising Including Openers
721	Kost	Tony		4027 N LeClaire Ave	Chicago	IL	60641-1435	(773) 736-2746		All Beer Openers (Esp. Chicago)
493	Kovarik	Lou	Rosemary	12646 Alswell Ln	Saint Louis	MO	63128-2509	(314) 842-2446		All
909	Krejci	Mike		W19103 Lake St Lot 3	Aniwa	WI	54408-9756	(715) 449-2075		Older Bottle & Can Openers with Brewery Names
433	Kroll	Victor	Jackie	3451 Nighthawk Ct # 433	Punta Gorda	FL	33950-6675	(941) 575-0303	beer@sunlin e.net	Wisconsin Brewery Openers & Corkscrews
880	Krutz	Charles		5603 Colfax Ave	Alexandria	VA	22311-1009	(703) 820-9138		Foreign Openers, Lighters, Blob Tops
216	Landino	Arthur		88 Centerbrook Rd	Hamden	CT	06518-3400	(203) 281-1085		New England Openers
271	Laraway	Bill	Diane	627 Kenwood Ave	Delmar	NY	12054-1607	(518) 439-2739		All for Albany, Troy, & Schenectady NY & Schaefer & Wood Figurals
759	Larson	Don	Jackie	213 N Campbell Ave	Beloit	KS	67420-2427	(785) 738-3197	jl Larson@nck cn.com	Beer, Soda, Cast Iron Key Shaped Beer
924	Lee	J Michael		2053 5th Ave	San Rafael	CA	94901-1765	(415) 457-1908		Advertising

2000 Just For Openers Membership Directory

#	Last Name	First	Spouse	Street	City	St	Zip	Phone/Fax	E-Mail	Specialties
804	Lendy	Dave	Shari	1927 Allen Dr	Geneva	IL	60134-3109	(630) 208-6950		US Beer & Malt Openers (Esp Illinois)
383	Levesque	Roger	Christine	PO Box 826	South Windsor	CT	06074-0826	(203) 644-9582		Micro Openers
435	Lewis	Sam	Carol	113 Rockwood Dr	Pittsburgh	PA	15238-2333	(412) 963-0827		Cigar Box Openers
809	Little	Jack	Helena	9531 W Sandstone Dr	Sun City	AZ	85351-2054	(623) 974-5353		Railroads, Hotels, Motels, Inns
938	Lloyd	Greg	Cindie	12 Sandy Ln	Millington	IL	60537-9999	(815) 695-9639		
15	Lohmiller	George	Eleanor	2924 Orchard Ave	Grand Junction	CO	81504-5342	(970) 243-3208		All
954	Lombardo	Craig	Heather Snyder	4202 E Fowler Ave #30834	Tampa	FL	33620-9999	(800) 519-5828	barproducts@aol.com	Manufacturer of Hands Free Bottle Openers, Pop-A-Lite, The Gluv
384	Lorett	Mike	Bobbie	PO Box 28	Conifer	CO	80433-0028	(303) 838-4292	mlorett@nile.net.com	Corkscrews
62	Lothridge	Tom		31 Pearl St	Bainbridge	NY	13733-1027	(607) 967-8575		All Openers & Corkscrews
743	Love	George	Martha	4301 Forest Plaza Dr	Hixson	TN	37343-5017	(423) 877-6006		Tennessee Openers
218	Love	Jack	Dorothy	3303 Memorial Dr S	Elwood	IN	46036-8323	(765) 552-2369		Beverage-Tourist-Unusual
752	Loy	Greg	Karen	316 Lynwood Ave	Ottumwa	IA	52501-4938	(515) 682-6779	karenloy@hotmail.com	"A"s & "B"s & "E"s and All Iowa Openers
449	Luchsinger	Paul	Anne	1126 Wishart Pl	Hermitage	PA	16148-4410	(412) 346-2331	ppl@imfonline.net	U.S. Patented Corkscrews
274	Lyons	Tom	Janet	321 Valley Court Rd	Lutherville	MD	21093-6413	(410) 296-0387	tom.lyons@baltsun.com	Figurals & Any Golf Related
816	Mahood	Jeff		303 W Elmwood Ave	Mechanicsburg	PA	17055-4126	(717) 766-8055		Beer, Pop, & Some Other
275	Mandzuk	Phil	Judy	340 Morley Ave	Winnipeg, Manitoba	CAN ADA	R3L 0Y5	(204) 452-1293		Canadian Only
905	Mann	Bob	Jennifer	2824 Candlewick Dr	Spring Hill	TN	37174-9288	(615) 302-3161	jenryo@mindspring.com	Brewery & Soda Advertising Bottle Openers
911	Marckwardt	Alton	Beverly	3902 FM 775	La Vernia	TX	78121-4719	(830) 779-6851		Beer & Soda
677	Maxwell	H James		1050 W Blue Ridge Blvd	Kansas City	MO	64145-1216	(816) 942-6300	hjmesq@aol.com	Kansas City, MO Breweriana and Openers
629	Mayberry	A A		1615 16th St	Auburn	NE	68305-1724	(402) 274-4448		Beer & Soft Drink
796	Mayer	George	Terry	10 Library St	Lily Dale	NY	14752-1145			Openers, Cans, Etc
941	McCord	Cliff	Diane Gaskill	15645 Veronica	East Pointe	MI	48021-3640	(248) 753-4732		Detroit Area Breweries
946	McGowan	Matthew		26 Kings Garden Road	Toronto, Ontario	CAN ADA	M8X 1S6	(416) 239-6801		Canadian Beer Brands
153	McKenzie	Elvira		6360 S Jellison St	Littleton	CO	80123-3174	(303) 979-0987		
712	McNary	Robert	Gloria Counts	15335 Banjo Dr	Hudson	FL	34667-3788	(727) 862-5528		All Types of Beer Openers plus Iroquois Openers
655	Milano	Hale	Todd (Dad)	506 Spring House Rd	Camp Hill	PA	17011-1454	(717) 737-5067	toddmilano@centralpenn.edu	"I-7"s (Beer & Non-Beer) & Anything from the Leo Ebert Brewery of Ironton, Ohio
668	Miller	Darwin	Otistean	32 La Canada Way	Hot Springs Village	AR	71909-2658	(501) 922-1615		All Bottle & Can Openers
861	Miller	Robert	Janice	2946 S 16th St	Milwaukee	WI	53215-3723	(414) 384-7837		All Kinds (Now Have 4450)
782	Miller	Scott	Marilyn	2136 Crosscreek Ave	Simi Valley	CA	93063-5000	(805) 583-2856		California & "H-8" Openers
732	Mlady	John	Jackie	1506 S 25th St	Omaha	NE	68105-2611	(402) 345-7909		Nebraska Openers, Corkscrews & Breweriana

2000 Just For Openers Membership Directory

#	Last Name	First	Spouse	Street	City	St	Zip	Phone/Fax	E-Mail	Specialties
840	Moldrem	Barney	Leslie	320 Highland Ave	Syracuse	NY	13203-1608	(315) 428-8256	bmoldrem@aol.com	New York & Minnesota Brewery Openers
735	Morrison	Bruce	Julie	335 Gallihar Ln	Greeneville	TN	37743-3409	(615) 639-0897		
450	Moter	Lawrence		10149 Michaels Rd	Woodford	VA	22580-2500	(804) 448-3928 W(804) 672-2234		"E"s, "F-5"s, "F-6"s, "F-9"s, "F-18"s, "F-27"s, "P-1"s, "P-73"s, "P-88"s, "P-94"s
899	Muehe	Gary	Diana	7132 Stanford Dr	Bridgeview	IL	60455-2230	(708) 430-5495	gam7132@aol.com	U S Beer & Malt
908	Mueller	Grant	June	345 Country Club Ter	Battle Creek	MI	49015-4655		gmue345@aol.com	Beer Cans & Beer Openers
279	Muma	William	Sherron	9530 Swanbrook Ct	Elk Grove	CA	95758-1305	(916) 684-0170	wksimuma@cs.com	
867	Musick	Donald		119 Green Acres Rd	Clovis	NM	88101-8434	(505) 799-4929		All Openers & Corkscrews, also Old Pens & Pencils
543	Nantt	William		114 Evelyn Ct	Woodbridge	CA	95258-9135	(209) 333-7826	savanna@softcom.net	"A", "C", "L", "M", & "N" Types
685	Nash	Abby		172 Bush Ln	Ithaca	NY	14850-1008	(607) 266-0690	asn6@cornell.edu	Bakelite & Corkscrews
906	Nau	Kurt	Lisa	90 W 14th St	Deer Park	NY	11729-4022	(631) 595-3660	knau@aol.com	All Types
581	Neas	Paul	Alma	4953 Vera Cruz Rd	Center Valley	PA	18034-9734	(610) 797-5759		All Kinds
611	Newmark	Michael		549 Buxton Ave	West Hempstead	NY	11552-2832	(516) 485-0509	miken549@yahoo.com	Beer Only (US)
742	Newsome	L J	Walter	PO Box 14231	Phoenix	AZ	85063-4231	(623) 849-4824		Dairy Openers & Cigar Box Openers
67	Nowicki	Pete		1531 39th Ave	San Francisco	CA	94122-3015	(415) 566-7506	portfire86@aol.com	Hamm's Beer
746	Offchinik	Robert		504 Florida Pky	Kissimmee	FL	34743-7510	(407) 348-7254		Wall Mounts-Corkscrews-Bartenders Knives
791	O'Leary	Fred	Sue	6149 Shadygrove Dr	Cupertino	CA	95014-4645	(408) 996-3101	fsoleary@aol.com	Corkscrews
741	Olson	Floyd	Dale Louise	18226 182nd St	Tonganoxie	KS	66086-5143	(913) 724-3020		Oxygen-Acetylene Tank Wrenches
901	Olson	Keith	Karen	17021 Oak St	Little Falls	MN	56345-6443	(320) 632-4066		
913	Orr	Jeff	Carol	24358 E Sunnycrast Ct	Diamond Bar	CA	91765-4390	(909) 860-8182	jsorr@aol.com	All Kinds-Figurals, Cast Iron, Beer/Soda-Whatever catches my eye
223	Orth	Dennis	Mary	4210 S Lake Five Dr	Colgate	WI	53017-9764	(262) 628-3933	dorthjbfan@aol.com	
126	Osborn	Jim	Mary Jo	320 Dobson St Apt B	Carterville	IL	62918-1549	(618) 985-6935	jro320@midamer.net	Pre-Pro Openers; Illinois Openers; Beer Adv. Corkscrews
800	Ostrow	Ken		58 Cedar St	Newton	MA	02159-1113	(617) 527-4705		New England Paper Label Bottles & Breweriana Dealer
477	Owen	Steve	Candy	1175 Elkins Lake	Huntsville	TX	77340-7321	(409) 295-3329	steveo@icc.net	All "O-5"s
719	Paczkowski	Joe	Rita	317 Medford Lakes Rd	Tabernacle	NJ	08088-9018	(609) 268-9390	pacz@home.com	Eastern Pennsylvania, NYC & New Jersey-"B", "C", "E", "G" & "H" Types
451	Paradi	Joseph	Monika	670 Meadow Wood Rd	Mississauga, Ontario	CAN ADA	L5J 256	(905) 823-3754	paradi@ie.utoronto.ca	Corkscrews
919	Partlow	William		PO Box 1905	Culpepper	VA	22701-6855			
486	Pattie	Bill	Lyla	37050 SE 89th St	Snoqualmie	WA	98065-9786	(425) 888-2495	bpopeners@cs.com	Montana Beer, Brewery & Business Openers & Corkscrews

2000 Just For Openers Membership Directory

#	Last Name	First	Spouse	Street	City	St	Zip	Phone/Fax	E-Mail	Specialties
776	Patton	John	Eileen	9224 Sugarloaf Dr	Redding	CA	96001-9763	(530) 229-7719	deacon@jett.net	"B-24" "C-19" "E-1-2-3-9-11-13-14" "G-1" "H-3" "I-1-2-3-6-7-15-18-22", "J-5"
943	Payne	Tim		5144 Walker Ave	Lincoln	NE	68504-2961	(402) 466-6592	house-of-payne@webbtv.net	Nebraska Openers (All Shapes & Sizes)
726	Pearis	Gibson	Dana	315 Berry	Belton	MO	64012-1977	(816) 331-2285	gibp@qni.com	Figurals & Other Openers
910	Pehling	Darlene	Willard	PO Box 665	Walker	MN	56484-0665	(218) 547-3173		
862	Pelletier	Gary		13141 Finch Way	Apple Valley	MN	55124-8056	(612) 432-3905		Soda & Minnesota Beers
69	Peters	Bette		20522 Hudson St	Burney	CA	96013-4187	(530) 335-2308		Openers & Corkscrews
750	Petro	Andrew	Linda	116 Otter Ln	Waterloo	SC	29384-9675	(864) 677-4132		All "Coal Region" of PA
940	Phipps	Barry	Lynette	8686 Red Bank Rd	Redding	CA	96001-5536	(530) 241-7832	pooldude1234@msn.com	Character Bottle Openers
811	Pinney	Dave		1766 Red Barn Rd	Encinitas	CA	92024-3033	(760) 753-8151	davecent@tmisnet.com	Metal Beer & Soda Openers
754	Pitsch	Ralph	Ruby	2814 Wedemeyer St	Sheboygan	WI	53081-6738	(920) 458-2525		All Beer & Novelty
875	Pommerville	Robert		RR 1 Box 3-1	Oswegatchie	NY	13670-9722	(315) 848-3701	ftroop@northnet.org	All Kinds
842	Post	Bob	Sara	4516 S Pin Oak Ct	Sioux Falls	SD	57103-4967	(605) 339-0269		Brewery Bottle Openers US
831	Preacher	Hugh	Elayne	6052 Wilmington Pike # 126	Centerville	OH	45459-7006	(937) 455-0302	lnusgmac.hpreact01@eds.com	A,B,C,D,E,(G,H,Some),I, J & Soda
572	Queen	Harold	Ida "Boots"	1001 Centre Ave	Jim Thorpe	PA	18229-1015	(570) 325-2612		All "C"s, "O"s, "M-3"s, "A-21"s, "M-19"s, PA Openers, "N-8" Beer & Non-Beer & Corkscrews
713	Quilliam	Mike	Julie	65 Maria Dr	Great Falls	MT	59404-3769	(406) 761-1953	mtbeerman@earthlink.net	All Montana Beer
694	Quimby	Chris		3405 Yeoman Ave	Vancouver	WA	98660-1176	(360) 693-3982		Soda Openers
734	Ransom	John	Norma	PO Box 97	Osborn	MO	64474-0097	(816) 675-2375		All Kinds
670	Readel	Jerry	Barbara	15622 N 57th Ave	Glendale	AZ	85306-3010	(602) 439-1788	breadel@uswest.net	Beer & Soda All Kinds
470	Redl	Alex	Peggy	1009 Elk St	Beatrice	NE	68310-3026	(402) 223-2554	aredl@inebraska.com	Little-Bit-Of-All-Kinds
857	Reeder	Thomas	Barbara	20 E Prospect St	Hopewell	NJ	08525-2041	(609) 466-1379	treeder@home.com	Northeast Regional, Cast Figural Openers
358	Rees	Carl	Pat	11366 N Rio Vista Rd	Pocatello	ID	83202-5315	(208) 237-2464		All Beer & Soda Openers
915	Rio	Ralph	Cathy	2887 Skycrest Cir	Stoughton	WI	53589-2727	(608) 877-0808		Figural
777	Roche	John		2815 N 58th St	Scottsdale	AZ	85257-1009	(480) 949-9173	jroche2815@earthlink.net	All
359	Roe	Lehr	Joan	160 Penfield St	Dundee	MI	48131-1129	(734) 529-2359	lehr@dundee.net	Corkscrews
928	Rose	Richard	Diane	23 Phillip Ave	Burlington	MA	02180-5504	(781) 272-6457		Soda & Beer
921	Russell	George	Julye	3537 Pineridge Cir	Kissimmee	FL	34746-3671	(407) 870-1986	julye61@aol.com	All Wall Mounts, Flat Figurals, Face Wall Mounts, Just about any Kind of Opener
158	Santen	Art	Dorothy	6126 McPherson Ave	Saint Louis	MO	63112-1104	(314) 863-6798		Everthing - Plus

2000 Just For Openers Membership Directory

#	Last Name	First	Spouse	Street	City	St	Zip	Phone/Fax	E-Mail	Specialties
691	Schaefer	Ed	Kelly	366 Bassett Rd	Bay Village	OH	44140-1813	(216) 871-0449		Schaefer, Cleveland OH, Koch, Jamestown NY, Chautauqua NY, & Independence of Monessen, PA
16	Schele	Jerry	Kathleen	3744 Pineview Dr	Fort Wayne	IN	46815-4724	(219) 483-6350		U.S. Beer Openers & Corkscrews
442	Schiffers	George		882 Huron Ave	San Francisco	CA	94112-4038			Bottle Openers
508	Schmitt Jr	Conrad	Kay	406 Eastbrook Ln	O Fallon	MO	63366-1829	(314) 272-2814		Figurals & Unusual Types, Beer & Soda
669	Schrank	Bill		1926 S 14th	Manitowoc	WI	54220-6108	(920) 686-1182	bschrank@is ol.net	Hamm-Kingsbury-Bleser-Lone Star
688	Schuldheisz	Lawrence		851 Doss Ave	Orlando	FL	32809-5880	(407) 855-7731		All Kinds
338	Schwab	Ed	Betty	10187 Cabin Ct	Mechanicsville	VA	23116-9409	(804) 746-1924	bschwab@vc u.org	Beer Openers & Bottle Caps
630	Schweigl	Leonard	Dolores	2350 S 23rd St Lot 1054	Manitowoc	WI	54220-6308	(920) 684-3707		Whatever
680	Schwimmer	Mike	Kit Reynolds	325 E Blodgett Ave	Lake Bluff	IL	60044-2112	(847) 295-1901	mhugo@ente ract.com	Cigar Box Openers
916	Seidl	John	Lauren	4324 Granby Way	Marietta	GA	30062-8150	(404) 631-2334	jseidl@dtus. com	Hamm & Rahr Malting Co
443	Sell	Bill	Althea	457 Holly Ave	Saint Paul	MN	55102-2205	(651) 227-9299	bsell1@isd.n et	Corkscrews
898	Sepenoski	John	Rita	PO Box 120	Peconic	NY	11958-0120	(516) 765-3914		All Openers
956	Shanaman	Larry	Bonnie	RR 3 Box 341	Mifflintown	PA	17059-9610	(717) 436-6457		Any & All Openers, Mostly Beer
175	Sherk	Lawrence		PO Box 98094 970 Queen St E	Toronto, Ontario	CAN ADA	M4M 1J0	(416) 465-3386		All Canadian Only
18	Sherman	Don	Ruth	438 Mavis Dr	Los Angeles	CA	90065-5054	(323) 225-7870		"A" & "B" Type Openers & Corkscrews
757	Sherman	Scott	Cindy	W5268 Quarry Rd	Appleton	WI	54915-8330	(920) 954-1168		Metal Beer Advertising Openers
885	Short	Marvin		1614 7th St SE	Roanoke	VA	24013-2704	(540) 343-8890		Any Kind, Advertsing Preferred
836	Shultz Jr	Bren	Helen	1111 Walnut St	Columbia	PA	17512-1362	(717) 684-6869	bshultzjr@a ol.com	All Types of Beer Openers
616	Sipress	Bernard	Mildred	21 Hilltop Ln W	Columbus	NJ	08022-1007	(609) 298-9114		Beer Openers & Cigar Boxes
672	Skelton	Allan	Karen	1055 86th Ave W	Duluth	MN	55808-1414	(218) 626-2480		"A" & "B" Openers
832	Skiba	Scott		156 Overlook Dr	Clinton	NJ	08809-9999	(908) 730-0931	irwin@prolo g.net	Figurals, Plates, Flats
945	Sklow	David	Sherry	28221 Center Ridge Rd Apt D14	Westlake	OH	44145-3841	(440) 250-0059	sdsklow@aol .com	Openers with Spoon on End
410	Smith	Henry	Linda	5459 Woodhaven Dr	Cincinnati	OH	45248-5113	(513) 451-2641	maemat@aol .com	Cincinnati & Hamilton OH, Covington & Newport KY, All Breweriana & Soda Openers
678	Sommer	Robert	Janet	413 Scott Dr	Silver Spring	MD	20904-1065	(301) 384-5456	rjs888cpa@a ol.com	Brewery, Soft Drink, Miscellaneous that are of Interest
868	Sorrel	Glen	Deanna	10605 Saber Creek Cv	Austin	TX	78759-6812	(512) 483-9492	gsorrel@ken nedwilson.c om	Key Shaped Openers
176	Stahly	Bob	Marge	1508 E Bridge St	Streator	IL	61364-3114	(815) 672-4323		Wall Mounts
930	Stambaugh	Pat	Louy	718 S Lakeshore Dr	Lake City	MN	55401-1849	(651) 345-4446	pas02@exc h.mayo.edu	Minnesota Breweries (All Types)

2000 Just For Openers Membership Directory

#	Last Name	First	Spouse	Street	City	St	Zip	Phone/Fax	E-Mail	Specialties
339	Stanley	John	Pat	3712 Sunningdale Way (Mailing PO Box 64 Chapel Hill NC 27514)	Durham	NC	27707-5684	(919) 419-1546 F(425)795-8874	jfo@mindspring.com or john_stanley@unc.edu	"A" & "B" Types, Southern US, Hoster-Columbus, & Fink Openers & Corkscrews
942	Stanley	William	Donna Jean	445 Lester Pt	Waconia	MN	55387-9785	(612) 442-1536	105264.651@compuser.com	Beginning - Everything For Now
184	Stawarz	Henry	Marge	RR 2 Box 131	Rushville	IL	62681-9637	(217) 322-6834		All Kinds
839	Steffens	Fred	Alberta	2410 Cleveland Rd	Sebring	FL	33870-1565	(941) 471-3105		All Types-Mostly Misc & Multi Purpose & All Types of Corkscrews
667	Steinke	Tom	Sharon	155 S Charles St	Waukesha	WI	53186-6201	(262) 542-0252		All Kinds, Esp "A"s, "B"s, Figural
896	Stinson	Don	Lynda	RR #5	Perth, Ontario	CAN ADA	K7H 3C6	(613) 267-5462	stinson@perth.igs.net	"O" Types (Mostly) Starr, also K & M
617	Stork	Jim	Ruth	7504 Parliament Ct	West Chester	OH	45069-2325	(513) 755-8670		Ohio, Sodas, & Figurals
873	Stroble	Al	Karen	608 Cortland Dr	Lake Zurich	IL	60047-2365	(847) 438-9051	astrobl@amfam.com	Figural & Beer Openers
661	Sutton	Lewis "Lou"	Rita	PO Box 1112	Mechanicville	VA	23111-6112	(804) 730-0449	deals2go@aol.com	Virginia Openers
769	Swanstone Jr	Donald	Julie	601 Main St	Dearborn	MO	64439-9111	(816) 450-8819		Corkscrews
626	Teggatz	Bonnie		427 G Ave NW	Cedar Rapids	IA	52405-2643	(319) 368-8348	twintin2@yahoo.com	Kitchen, Bottle & Can Openers
515	Tewksbury	Ralph	Linda	84 Wildwood Dr	Parkersburg	WV	26101-9783	(304) 863-3627		C & E Type Beer Openers
363	Thompson	Thom	Frances	123 Shaw Ave	Versailles	KY	40383-1157	(606) 873-8787 (606) 255-2727		Coca-Cola Openers-Vintage & Lexington, KY Brewery Openers & Opener Literature
935	Thompson Jr	Glenn		PO Box 1391	Waynesboro	VA	22980-0933	(540) 943-8423	gwtomson@cfw.com	Drink, Beer and Paint Openers (over 765 in collection)
852	Thoms	Ernie	Jeanette	206 Windemere Way	Anderson	SC	29625-5267	(864) 225-1588	rail@carol.net	All Openers
789	Tozer	L V		1290 SE 8th Ave	Oak Harbor	WA	98277-4050	(360) 675-4575	lvsylt@whidbey.net	Beer Openers
895	Treadway	Gerry	Barbara	410 Strasburg Ave	Parkesburg	PA	19365-1029	(610) 857-3677		Pennsylvania
936	Van Der Schot	Gerald		Plesmanlaan 105	1171 EM Badhoevedorp	The Netherlands		(+31-20-4493116)	gvanderschoot@usa.net	Any Advertising Openers & Corkscrews (No Souvenirs)
904	Van Wagner	M Jack	Beverly	409 Blackstone Ave	Willow Springs	IL	60480-1506	(708) 839-8843		All Kinds
785	Vandemark	Bud	Betty	3830 Cambria	Elida	OH	45807-9792	(419) 642-3281		All Types of Bottle Openers & Corkscrews
851	Veley	Gordon	Melinda	921 Snyder Hill Rd	Ithaca	NY	14850-8701	(607) 539-6994	barnbrew@aol.com	Beer-All Kinds
632	Virostek	Donald		3746 Margate Rd	Pittsburgh	PA	15221-3914	(412) 241-5894		"M-3"s, "B-1"s, "B-2"s & Iron City Openers
547	Vlossak	John	Doris	1044 E Eldorado St	Appleton	WI	54911-5568	(920) 739-2789		Corkscrews-Esp. Walker & Williamson's
162	Vollrath	Verne	Laverne	218 S Lexington Dr	Janesville	WI	53545-4322	(608) 752-5708		U.S. Beer Malt & Hop Openers
227	Wagner	Paul	Stella	944 Hale St	Pottstown	PA	19464-4034	(610) 326-5419		PA Beer & Soda Openers & One-Of-Each Type
228	Waldo	Harriet		27152 Potato Sack Rd	Rocky Mount	MO	65072-9054	(573) 392-3186		"H"s and Any Missouri

2000 Just For Openers Membership Directory

#	Last Name	First	Spouse	Street	City	St	Zip	Phone/Fax	E-Mail	Specialties
559	Walker	Don	Marcia	2294 Terrace Dr N	Clearwater	FL	33765-2743	(813) 799-4253		Beer Flat Figurals & Beer Corkscrews
364	Watkevich	Frank		306 Cottage St	Athol	MA	01331-2950			All Kinds of Openers & Corkscrews
950	Wells	Jack	Sonya	12397 Torberg Pl	Fishers	IN	46038-1245	(317) 849-5330	jswellsul@aol.com	
728	Westall	Jack	Wanda	5945 Shallow Creek Dr	Milford	OH	45150-1524	(513) 248-1127	jwestall@cin.ci.rr.com	All Beer Opener Types (Except Wall)
684	Westland II	Deane	Kristi	1612 S 13th Ave	Saint Charles	IL	60174-4504	(630) 513-6090		Chicago, Illinois, Bud
923	Westlund	Jerry	Helen	606 S Main St	Groton	NY	13073-1346	(607) 898-5014		"I"- "E"- "C" "I"-Mostly & Can Piercers of All Kinds
583	Whelan	Don	Cora	1200 W Maple St	Savannah	MO	64485-1857	(816) 324-3603		Schlitz, Types, Missouri Breweries
933	White	Bruce		3976 W Cindy St	Chandler	AZ	85226-3879	(480) 899-1538		Beer Openers Types "C", "E" & "I", some Soda & Cigar Box Openers
618	White	Herb	Polly	3216 Jamaica Blvd S	Lake Havasu City	AZ	86406-6207	(520) 680-7762	wirieup@ctaz.com	"E-11"
937	Wideman	Rod	Cathy	5325 N Hillary Cir	Parker	CO	80134-5404	(303) 840-5129	rwideman@ix.netcom.com	"I-7"s, Mini Cans
296	Wilcox	Darwin	Ellen	8495 Croix Trl	Roscoe	IL	61073-9158	(815) 623-2255		Advertising Openers
917	Wilkinson	Al	Koletta	641 Cottonwood Dr	Bowling Green	KY	42103-1405	(270) 781-2788	wilkie98@miindspring.com	Any "Scruie" I don't have that is Unique and Different that I can purchase
488	Williams	Don	Diane	1022 Diablo Rd	Danville	CA	94526-1924	(925) 831-1783	plumpjack2@yahoo.com	Types, Copper
365	Williams	Scott	Ursula	11601 Tissel Hollow Rd	Fairfax	IA	52228-9789	(319) 846-2919		Types "A", "B", "I-7", "I-17", "B-24", Wooden Handle Corkscrews, Iowa Beer Openers
510	Willing	Ken	Betty	3841 W Bass Creek Rd	Beloit	WI	53511-9022	(608) 752-1387		Most Any Type
326	Wisconsin State	Historical Society		816 State St	Madison	WI	53706-1488			
961	Witanek	Thomas	Janet	20431 Lone Star Oak St	Cypress	TX	77429-5601	(281) 373-9449 W(800)231-2966	tom@foamrangers.com or tytolean@insync.net	All Areas Interest Me
143	Wulff	Rod		623 Fern Way	Eldersburg	MD	21784-8516	(410) 795-0771		
830	Yates	Paul		PO Box 715	Arlington	OH	45814-0715	(419) 420-1902		All Openers
314	Young	Joe	Jackie	36 S Weston Ave	Elgin	IL	60123-6036	(847) 695-0108	jandjyoung@earthlink.net	Corkscrews & Tin Can Openers
342	Zanghi	Tony	Cathy	2225 Deer Trail Rd	Coopersburg	PA	18036-9069	(610) 346-8232	anthony.zanghi@conrail.com	Collect Pennsylvania Small Towns: A & B Type Openers, Blob Top "Squat" Bottles, and Beer Labels (Pre-Pro and I RTP)
886	Zeppenfelt	Mark	Rose Ann	4881 Cypress St	Wescosville	PA	18106-9412	(610) 391-0271	uuubuy@aol.com	Beer Openers-Mostly PA
525	Ziegler	Terry		698 Huffs Church Rd	Alburtis	PA	18011-2226	(610) 845-7102	ziggie43@aol.com	All Types of Openers

JUST FOR OPENERS

22nd ANNUAL CONVENTION REGISTRATION
APRIL 26-30, 2000

HYATT Lisle (Chicago IL)
1400 Corporetum Dr
Lisle IL 60532
1-800-233-1234

(Rate is \$86.00/Single/Double/Triple/Quad) (Hotel Cutoff Date is April 12, 2000)

(Tell them you are with the Just For Openers Group)

MAKE Lisle YOUR NEXT STOP ON THE JFO CONVENTION TRAIL

MEMBER REGISTRATION FEE - **\$40.00**
(MEMBER INCLUDES HOSPITALITY ROOM, CONVENTION OPENER & 1 SHOW TABLE)
SPOUSE/PARTNER - **\$10.00 (Total Member & Spouse/Partner \$50)**
(SPOUSE/PARTNER INCLUDES USE OF HOSPITALITY ROOM)

NAME _____

ADDRESS _____

CITY _____ STATE(PROVINCE) _____ ZIP _____

EVENING PHONE NUMBER _____

DATE YOU WILL ARRIVE _____ APPROXIMATE TIME _____

DATE YOU WILL LEAVE _____ (NEED TO KNOW FOR PLANNING PURPOSES)

HOW WILL YOU ARRIVE? CAR ___ PLANE ___ TRAIN ___ OTHER _____

NAME(S) FOR CONVENTION BADGE(S): _____

MAKE CHECKS PAYABLE TO Norm Jay, Send Checks to:

Norm Jay
839 James Court
Wheaton IL 60187-6344
PHONE (630) 690-1565

***** **BRING A DISPLAY !!! BRING A DISPLAY !!!*******



Lisle, ILLINOIS
April 26-30, 2000

**The Chicago Skyline at Night is a
Beautiful Sight!**

**But Finding Openers and Corkscrews
is Really Bright!**

**But If You Aren't There, Things Just
Won't Be Right!**

