

22nd Year, Issue #87  
Copyright 2000  
JOHN STANLEY (EDITOR)



July 2000

P-155-UL

# ***JUST FOR OPENERS***

PO Box 64 Chapel Hill NC 27514-0064 (919) 419-1546

Web Site at <http://www.just-for-openers.org>

Past Editors: Don Bull (1979-83) Ed Kaye (1984-1988) Art Santen (1989-1993)

**Membership Renewals / Annual Dues \$20.00**

If the label on your Newsletter Mailing Envelope has an Expiration Date of 09/30/00, please pay your dues now. A membership renewal card should be enclosed. Please verify your renewal date.

**P-155-UL Falstaff**

A June purchase from Ebay. Fortunately Don Bull's cable was not working and I was able to avoid competition from him. Nice quality knife made by the Western States Knife Co. of Boulder Colorado. John Hirschfield was a beer distributor from Champaign, IL. (see H-3-51).

**Thank You 2000 Convention Lisle, IL (22nd JFO Convention) (April 26th to 30th, 2000)**

The Jays would like to thank the 46 other members from seventeen states who attended JFO 2000. Everyone who registered came and I believe we had one attendee who rejoined, another person joined for the first time and a third who drives a semi parked his load for a couple of hours to buy openers. He was on his way from Wisconsin to Florida.

Eight attended their first convention and nineteen came that had not attended JFO 1996 which was at the same location. Many of you brought food for the hospitality room which was appreciated. The one standout was the Biehls who really outdid themselves. Also thanks to the Stanleys for help in typing the two initial letters which were included in the April newsletters, for procuring the convention opener, and for running the Ebay Friday seminar. Also thanks to Vern and LaVerne Vollrath along with Gary Deachman for running the Friday auction. Lastly to John Bitterman and Dave Lendy for help in unloading the car and for distributing announcements throughout the area about our public show.

One can get in trouble when dishing out thanks and I hope I haven't forgotten someone. We look forward to St. Joseph, Mo. In 2001 and hope to see you there.

Norm & Judy

**Soda Advertising Openers by Donald A. Bull & John R. Stanley**

We have plenty of copies on hand and would appreciate JFO members buying a copy. As of mid-June we had only sold 90 copies. Bull and Stanley make very little on book sales and it would be greatly appreciated if members would show their support and buy a copy. Don Bull does have a sizeable amount of money tied up in inventory for the *Soda Advertising Openers* book. Please take the time to order a book if you have not already done so. See the attached flyer. Thank you to everyone who has bought a book and also bought a *Just For Openers* book.

<b>Members Update</b>
-----------------------

Roger Levesque underwent cancer surgery in March. He is doing very well and hopefully can resume "The Micro Connection" publication sometime in the future. Also on the mend from cancer treatments is Bill Hanold. He has had 25 radiation treatments the last few months. As this newsletter is sent out he is hoping to hear news that the treatments have been successful.

<b>New/Change E-Mail Addresses</b>
------------------------------------

Mike Calhoun	<a href="mailto:mgc62651@webtv.net">mgc62651@webtv.net</a>	
Dick Clark	<a href="mailto:rwclark@uswest.com">rwclark@uswest.com</a>	
Janet Goss	<a href="mailto:jigoss@uswest.net">jigoss@uswest.net</a>	(Change)
Craig Green	<a href="mailto:recordmonger@msn.net">recordmonger@msn.net</a>	
Rich Hartzog	<a href="mailto:hartzog@exonumia.com">hartzog@exonumia.com</a>	
Al Himes	<a href="mailto:hartdozer@aol.com">hartdozer@aol.com</a>	(Change)
Kenny Hoesch	<a href="mailto:solomon@egl.net">solomon@egl.net</a>	(Change)
Gerald LeClair	<a href="mailto:jerrico_0729@yahoo.com">jerrico_0729@yahoo.com</a>	
J Michael Lee	<a href="mailto:jmikelee@prodigy.net">jmikelee@prodigy.net</a>	
Matt McGowan	<a href="mailto:cybeerspace@excite.com">cybeerspace@excite.com</a>	
Gerry McLellan	<a href="mailto:gmclellan@webtv.net">gmclellan@webtv.net</a>	
Pat Stambaugh	<a href="mailto:sailvi@onvoymail.com">sailvi@onvoymail.com</a>	(Change)
Ralph Tewksbury	<a href="mailto:lartewks@juno.com">lartewks@juno.com</a>	
Jerry Westlund	<a href="mailto:helier@msn.com">helier@msn.com</a>	

<b>ECBA Spring Show Allentown PA (April 8 2000)</b>
-----------------------------------------------------

Allentown ECBA show is always great because I get to stay with Ben and Cornelia Hoffman. Even after a strenuous eight hour drive which included me getting lost for 30 minutes, it is always nice to visit with them. I arrived Friday evening close to six o'clock. After a nice fried chicken supper Ben and I got down to checking out his collection. As always he has made many nice new additions, with my favorite being a B-50 Monocacy. I went through his soda box and we worked out a trade for miscellaneous soda openers. By 10:00 I was ready to turn into bed. Saturday morning we arrived at the Allentown Spring Show at 8:15. As usual there was a long line to get in and it took us about 20 minutes to finally get in and find our table. Fellow JFO member Tony Zanghi made the best early purchase of a B-6-UL Neuweiler's and at a nice price of \$45. I bought some miscellaneous openers but my one good buy was an A-22-1 Ballantine being held for me. It was being passed along to Gary Deachman for the \$150 selling price. Soda book sales were slow and by the end of the show I had sold three. I guess beer collectors have only marginal interests in soda items. Harold Queen had to make a late appearance due to a wedding and I did sell him a couple of Bergner Engel knives. After an hour and half ECBA officer's meeting we were on the road. Ben was meeting some of his high school classmates for supper and since we had some time to kill, we hit a couple of antique malls. As seems to be the current situation in collecting only the common openers turn up. Ben got a few wire openers and I got two E-6 Northhamptons. The supper was nice but the waitress did forget to turn in my order so I was the last one to eat.

Back at Ben's house it was back to checking out more of his collection. We did end up trading with Ben giving me an A-35-39 Farmers and I gave him a B-21-478 Clearfield. We talked openers until 10:00 and convention plans. Despite an overnight 3 inch snowfall I had an uneventful trip home. Stops at a couple of antique malls only yielded a plastic handle soda opener (style M-40). Thank you again Ban and Cornelia for a great weekend. Other JFO members in attendance were Larry Moter (he didn't bring any openers, was waiting for the convention), Ken Ostrow and Bill Laraway.

2000 Lisle, IL Convention Attendees	
Bill Arber (Barb) *	Alden, NY
Mark Barren	Newfane, NY
Larry Biehl (Fran)	Calumet City, IL
John Bitterman	Joliet, IL
Dick Britton (Bonnie)	Waterford, MI
Bill Brunner (Jo Ann)	Mount Horeb, WI
Don (Bonnie)	Wirtz, VA
Jeb Burruss III	Canyon Lake, TX
David Cress (Susan) *	Janesville, WI
Dick Creuziger	Racine, WI
Herbert Danziger (Camille)	Birmingham, MI
Gary Deachman	North Woodstock, NH
Sandra Emme	Upper Marlboro, MD
William (Tom) Gormally (Phyllis)	Westfield, NJ
Charles Gritton (Hazel) (*)	Des Moines, IA
John Hall (Anna)	Sebring, FL
Ollie Hibbeler (Shirley)	Lake Ozark, MO
Ben Hoffman (Cornelia)	Perkionmenville, PA
Roger Jarrell	Durham, NC
Norm Jay (Judy) (**)	Wheaton, IL
Vic Keown (Mary Ann)	St. Ann, MO
Dave Lendy (Shari)	Geneva, IL
Bob McNary (Gloria Counts)	Hudson, FL
Larry Moter	Woodford, VA
Gary Muehe (*)	Bridgeview, IL
Jim Osborn (Mary Jo)	Carterville, IL
Robert Pommerville (Jackie) *	Oswegatchie, NY
Bob Post (Sara)	Sioux Falls, SD
Harold Queen (Boots)	Jim Thorpe, PA
Lehr Roe (Joan)	Dundee, MI
Art Santen	St. Louis, MO
Conrad Schmidt (Kay)	O'Fallon, MO
Don Sherman	Los Angeles, CA
Bob Stahly (Marge)	Streator, IL
Pat Stambaugh (*)	Lake City, MN
John Stanley (Pat)	Durham, NC
Henry Stawarz	Rushville, IL
Tom Steinke (Sharon)	Waukesha, WI
Bonnie Teggatz	Cedar Rapids, IA
Glen Thompson (Shelby Willmott) (*)	Waynesboro, VA
Jack Van Wagner (*)	Willow Springs, IL
John Vlossak (Dot)	Appleton, WI
Verne Vollrath (LaVerne)	Janesville, WI
Harriet Waldo	Rocky Mount, MO
Don Whelan (Cora)	Savannah, MO
Scott Williams	Fairfax, IA
Joe Young (Jackie)	Elgin, IL

(\*) Denotes First JFO Convention Attended. (\*\*) Convention Hosts.

**JFO 22<sup>nd</sup> Annual Convention Chicago (Lisle) IL (April 26-30 2000)**

Even with a three day weekend due to Easter I was rushing around trying to pack everything. When we travel Pat has to bring half the house and I want to bring all of my openers. The toughest part is leaving Corkie "the Yorkie" for a week, but she doesn't mind this time as our friends will take extra good care of her. We arrive at the airport and have a chance to get two \$500 vouchers if we give up our seats but Pat says no way. She has looked forward to this week too long and we would have to wait another four hours before leaving and make Joe and Jackie Young pick us up in rush hour traffic. We arrive at Chicago O'Hare about 1:00 central time.

Joe and Jackie are waiting and the week is off to a good start. Pat and I stayed two nights with Joe and Jackie in Elgin, IL. After we get settled in it is time for my class on "Can Openers 101". They have over 4500 and Joe is trying to do a book on them. It is one of those areas of opener collecting that I find good ones from time to time but really do not know much about them. Joe tells me there are not any good can opener reference books and his will be the first one to fill that void. (Editor's note: if anyone has information, advertising information or what they think is an unusual can opener, please contact Joe Young). Joe spent a couple of hours showing me some of his better examples and we just touched the surface of their collection.

The one hour time change never sounds too bad but I was tired by 10:00 CST and decided to turn in. Pat and I did sleep in. Tuesday's plans called for the girls to ride the train to downtown Chicago and for Joe and I to hit some antique malls in Rockford. We visited three antique malls and our only purchase was a cheap opener/knife combo that I bought for \$10. Back at "can opener heaven" Joe and I took afternoon naps. After the ladies returned, we went out for supper and it was time for show and tell with Joe. I had brought along quiet a few openers for trading and selling and showed Jackie and him my "A" display. Joe is a firm believer that once you hold an unusual opener or corkscrew in your hand you have a much better chance of finding it. I believe there is a lot truth in that statement.

Joe did tell me how he got started in can opener collecting. Amazingly his father has patented a can opener and a relative of Jackie's had created a patent model for a can opener. Joe's father created one that does a fabulous job of opening a can without cutting the top. It just rolls the can top edge up and allows you to easily pop the top off. No sharp edges and it works effortlessly every time. Jackie's relative added a heavy piercing hammer head to the back end of a standard can opener. He called it the "Bingo", because it cut a heck of a square hole in the can top. It is easy to understand now why they have "can opener fever".

Wednesday morning we repacked and got ready for the one hour trip to the Hyatt Lisle. With all of the luggage Pat and I brought, Joe decided we needed to take two vehicles. The girls could go shopping and the guys could get meals without having to worry about transportation. Joe and I arrived at the hotel about 11:30 and went out for lunch as my room was still being cleaned. The 2000 convention host, Norm Jay, had reserved a room right beside the hospitality room for the Stanleys. I settled in pretty quickly and had most of my openers ready for buying, selling and trading. Wednesday saw 28 JFO members check in, so the action picked up quickly as the afternoon went by.

Usually I want to trade any good openers I bring, but several members were in a buying mood and I decided to help them out. John Bitterman was in my room first but the good Illinois openers were either already in his collection or promised to someone else. The one exception was a P-85 Henning which we were able to work out a deal on. Next Don Whelan and I completed a small trade and after that I was pretty much selling.

**JFO 22<sup>nd</sup> Annual Convention Chicago (Lisle) IL (April 26-30 2000) (Continued)**

Don Whelan certainly won the award for most determined to get to the convention. Fresh off of a recent heart operation (angioplasty) and against his doctor's advice, Don came in from St. Joe, Mo. His wife Cora said he was either going to drive her crazy sitting at home or come to the convention. A last minute pep talk the previous Sunday from Norm Jay and Don was willing to take the risks. His vision was not too good but Cora made the drive and Don brought a room full of openers for selling and trading.

Late in the afternoon Don and Bonnie Bull arrived with "the books". He had brought boxes of "Just For Openers", "Soda Advertising Openers", "Bull's Pocket Guide to Corkscrews", "The Ultimate Corkscrew Book", and of course "Popeye Corkscrews". He was carrying copies of the "2000 Handbook" and "American Breweries II". All of the sudden my room resembled a bookstore. Many thanks to members who ended up buying a good percentage of the books we had available. For anyone who has missed out, please check the order at the end of this issue. Remember, "Don't leave home without the books!"

That evening a large group of us (see the enclosed picture) went to a local brew pub for supper. Food and beer were pretty good and the company of course outstanding. Back at the hotel I just kept selling and of course listening to offers. Two of my best trading partners, Mark Barren and Larry Moter, brought some openers I needed. Fortunately I had some openers they needed. Larry and I consummated a trade fairly quickly while Mark and I was another story. I had several openers Mark needed and he was a little short in the "Johnny Pile". In the end (Thursday evening) he agreed to throw in some money (\$100 to be exact). Two more happy customers and the convention was well under way. Being the first night of the convention I made it a late one hanging out with Larry, Mark and Gary Deachman. For future reference I must remember to not have Gary across the hall from Mark and Larry. Seems like Gary and myself made just a little too much noise (according to our convention host).

Thursday morning was pretty slow as most people slept in. Pat and Jackie went to a rug "hookers" show near Milwaukee leaving early and did not return until late in the afternoon. At lunch I went with Norm Jay and Jeb Burruss to Norm's house to pick up some supplies. We got a private showing of Norm's collections. It had been two years for me and Norm had added several nice openers and as always a lot of nice breweriana. Back at the hotel I added a couple of boxes of openers to the sell pile which Elvira McKenzie had sent that were part of Bill's collection. Sales were pretty brisk that afternoon and I did check out several rooms. One person I met for the first time was Jim Osborn. We have battled for openers many times on eBay and I finally got to meet him in person along with his wife, Mary Jo. That evening we went with Joe and Jackie and Jim and Mary Jo to a local restaurant. Nice meal and I got to talk openers most of the time. Afterwards I spent most of the time in my room selling books and openers. Check out the next page for a list of some convention sales I knew about.

Friday morning Pat and I were slated to give a seminar on Ebay. Pat actually gave the seminar and I just helped out. (Anyone interested in a copy of the Ebay handout can write me). The seminar was well received and hopefully helped out some of the members and will encourage them to jump on the computer bandwagon. Before the seminar we had the member's display contests. We had 12 entries in the regular display contest and 7 entries for the "Bill McKenzie Best of Show Award". Voting was tabulated after the seminar and Norm was able to get the plaques engraved for the hand-out ceremony at the Saturday show. Thanks to everyone who entered the contests and check out the convention photos for the winners. Pat and I had lunch with Joe and Jackie's daughter and their two grandkids. The weather was beautiful and we had a nice Mexican lunch in Naperville.

## Some Sale Prices for 2000 Convention (most items were VG to EX Condition)

A-001	Fernie Beer	20.00	B-021-192	Petersen	18.00
A-001-008	Globe	20.00	B-021-276	Los Angeles	16.00
A-001-045	Gipps	40.00	B-021-519	Golden West	25.00
A-004-012	Widman	25.00	B-021-532	West End	17.00
A-004-041	Wausau	25.00	B-023-070	Hornell	20.00
A-009-004	Leisy	35.00	B-023-167	Town Club	15.00
A-013-002	Schells	150.00	B-031-005	Kuebler	40.00
A-013-006	Lemp (Var B)	50.00	C-012-046	Fort Pitt	5.00
A-013-006	Lemp (Var C)	70.00	C-012-166	Fox Valley	5.00
A-015-001	Aurora	50.00	C-013-041	Fort Pitt	5.00
A-015-014	Porter	50.00	D-012-014	L.A.	10.00
A-015-020	Grand Island	40.00	E-001-008	Hull	5.00
A-015-020	Grand Island	50.00	E-014-599	1884	20.00
A-015-027	Ambrosia	40.00	E-014-795	Horluck	20.00
A-015-038	Hyde Park	70.00	E-023-028	Tivoli	15.00
A-015-049	Hyde Park	30.00	E-030-001	Salt Lake City	75.00
A-017	Par Fay	40.00	F-006-046	Aurora	20.00
A-017-033	Barmann	50.00	F-006-064	Keeley	30.00
A-018-025	Cream Bee Malt	25.00	F-020-001	Storz	40.00
A-018-026	Breiner Malt	30.00	F-Cigar	Sodas	10.00
A-020-040	Old Germania	40.00	G-022-001	Fort Pitt	10.00
A-029	Nehi	20.00	H-002-046	Wacker	10.00
A-034	Hot Weiner Lunch	50.00	H-002-095	Sprenger	10.00
A-042-021	Fisher	25.00	K-005-002	Schlitz	10.00
A-049-001	Gilt Top	225.00	M-006-004	Pennsy	35.00
A-999	Goodyear Plane	50.00	M-030-061	Carlings	5.00
B-018-500	Bluefield	50.00	M-105-001	Colt	5.00
B-018-625	Berkshire	17.00	N-027-UL	Lone Star	15.00
B-019-003	Bartl	20.00	O-014	O'Keefe	15.00
B-019-028	Ohio	17.00	O-018-001	Arnold	125.00
B-019-090	Hoster	17.00	O-521	Nesbitts	10.00
B-019-121	Fitgers	25.00	P-008-212	Gerst	75.00
B-019-131	Oswald	16.00	P-048-002	Schlitz	80.00
B-019-146	Calumet	20.00	P-085-001	Mendota	80.00
B-021-008	Cleveland & Sandusky	20.00	R-005-001	Schlitz	70.00
B-021-075	Scheidt	17.00	R-018-001	Franconia	10.00

I was back in time to start the auction check-in process at 1:00. As always Verne and LaVerne Vollrath ran the auction and your editor helped out. We also recruited the services of Gary "every opener in the world is a dynamite piece" Deachman. It was during the auction which started at 3:00 that I started feeling bad. Usually I am tired by Friday (just too much opener excitement), but this time I knew it not good. The auction was a lot of fun but did drag on a little long. Most people who consigned items were limited to 3 items and a starting value of \$10. Unfortunately I misplaced the auction results but did have these few from memory. Thank you, thank you, Vern and LaVerne for another great auction and of course Vern is very entertaining as the auctioneer.

## Convention Auction Highlights

K-014-001	Drewerys	40.00	P-070-001	Minneapolis	95.00
N-017-001	National	17.50	P-096-001	Gutsch	145.00
N-029-007	Fredericks	135.00	R-005-001	Schlitz	70.00
O-006-UL	Jackson New Orleans	125.00			

**JFO 22<sup>nd</sup> Annual Convention Chicago (Lisle) IL (April 26-30 2000) (Continued)**

Friday evening I stayed in our room and slowly went downhill. We did manage to get a group picture of past convention hosts but as mentioned by a couple of members I was not in a good mood to be doing anything. Please accept my apologies if anyone got upset. By 9:30 I was in bed and was running a fever and was trembling from having the chills. At 10:30 Pat called Joe Young (that is Dr. Joe Young) and he came and checked on me. He recommended some extra strength Tylenol and I finally went to sleep. At 1:00 I woke up and the fever had passed but the hallways were alive with young girls running and yelling. After a while I was able to go back to sleep for the rest of the night but I was really weak the next morning. What a spot to be in, Saturday's the big JFO show day is here and I feel like crap. Thanks for your concern and help Joe Young. He actually slept in his clothes all night just in case Pat called him again about her sick patient. Thankfully she didn't have to.

The big tent connected to the lobby was hopping when I made it down to the show by 8:00. I was doing good just to be sitting down. Everyone was busy checking out the openers and corkscrews. There always seems to be openers that you have missed seeing in someone's room and we had some "fresh blood". Norm Jay was first to check out Henry Stawarz's table and got some nice beer openers including a B-35-UL Reno Brewing. The show had a good walk-in crowd and Don Bull (oops Bonnie Bull) actually sold 2 of the "Ultimate Corkscrew" books. Norm Jay gave out awards at mid-morning for the display contests. In the regular display contest Ollie Hibbeler won 1<sup>st</sup> place (P-1 Clough wire display), John Stanley won 2<sup>nd</sup> place ("A" type display), and Bob Stahly won 3<sup>rd</sup> place (O-2 & O-6 painted wall mount display (also some with some O-14s)). Tom Gormally won the "Bill McKenzie Best of Show Award" for his P-51 George Bechtal corkscrew and bottle display. I must add that unfortunately Don Bull thought the display contest started at 9:30 instead of 8:30 Friday morning or his wonderful display of Anheuser-Busch would certainly have won some award.

By far the largest, most organized and most comprehensive display was brought by Dick Britton. Each convention he adds a few more boards and the one number I heard mentioned was he had 63 boards (averaging 5 by 3 feet). They filled one end of the hotel lobby were very popular with members and the general public. One could spend several hours studying the boards and learning about "American Ingenuity". Dick has to bring them in a u-haul trailer and his efforts are greatly appreciated by everyone. He also missed out on the "new" display contest times but I will try to make sure everyone is aware of those times at future conventions. I should add that Dick's boards drew a lot of attention from both Don Bull and Joe Young as Dick had several can openers and openers with original packaging that Don photographed. Don had his "traveling studio" all set up in the show tent and took a lot pictures. Thank you to everyone who contributed pictures for this issue.

By 1:00 the show was ending and it was time for the "Norm Jay Breweriana Museum Tour". A caravan of cars made it to Norm's for an open house visit. Judy Jay has a large spread of nice food prepared and everyone spent time checking out Norm and Judy's collections. Several rooms and the entire basement are full of advertising collectibles. By 3:00 I was needing some rest so Joe Young, Roger Jarrell and I headed back to Joe's house. I was hoping to have a peaceful night of rest. It is always tough leaving the convention and even tougher knowing it will be another year before I see most of the people again. Thankfully the year passes fairly quickly. Thank you from everyone for another great convention, Norm and Judy Jay. It is hard to beat an experienced convention host and this one went off without any problems.

<b>JFO 22<sup>nd</sup> Annual Convention Chicago (Lisle) IL (April 26-30 2000) (Continued)</b>
------------------------------------------------------------------------------------------------

There were no convention problems but just "my sickness" which we eventually figure was a stomach virus. We stayed with Joe and Jackie that night and after an afternoon nap I felt better. Joe took Roger thru "Can Openers 101" and "Corkscrews 101" that evening which was after a nice brew pub meal in the neighboring town of Dundee. A good night's sleep and I was feeling much better for the plane trip home on Sunday.

We arrived back in Durham at 1:00 and I was already thinking and making plans for St. Joe, MO. In 2001. With 47 attendees this was the largest turnout ever for a JFO convention. Lets keep the trend going and hit at least 50 next year. The JFO convention is still the best place to get openers and corkscrews for your collection and the friendliness of the members cannot be beat. Below is a list of openers I picked up at the convention.

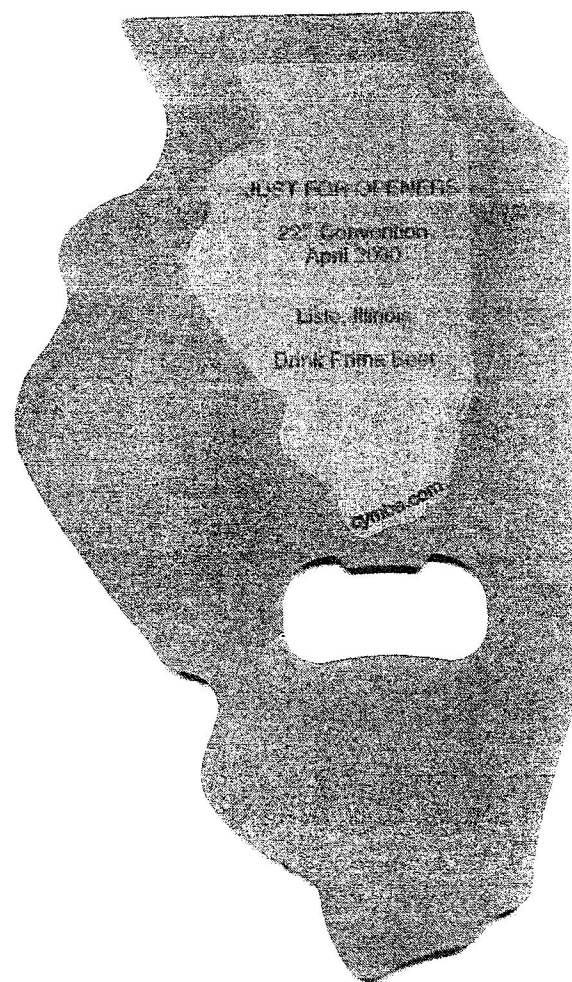
A-020-027	Sebewaing	B-027-001	Miller (Steel)	N-035-006	Grain Belt
A-029	Nehi	B-032	New Dom Hotel	N-043-005	Hamm
B-007-008	Moose	C-001-004	Scheidt	N-056-008	Grand Prize
B-021-228	Buffalo	E-008-003	Jones	N-075-UL	Sterling Pabst
B-021-264	Inland	E-009-075	Monumental	O-006-UL	Jax
B-022-030	Jung	H-001-023	Hornung	P-016-001	Narragansett

Special thanks to Joe & Jackie Young, Bob & Marge Stahly and Herb & Camille Danziger for sending convention pictures. With a sick editor, your pictures made a big difference.

**2000 Convention Opener  
made by Cymba Inc (Mead Bates)**

**You can own one by  
Sending \$7.50 (includes shipping)  
To:**

**Norm Jay  
839 James Ct  
Wheaton IL 60187**



**Glenn W. Thompson, Jr.**

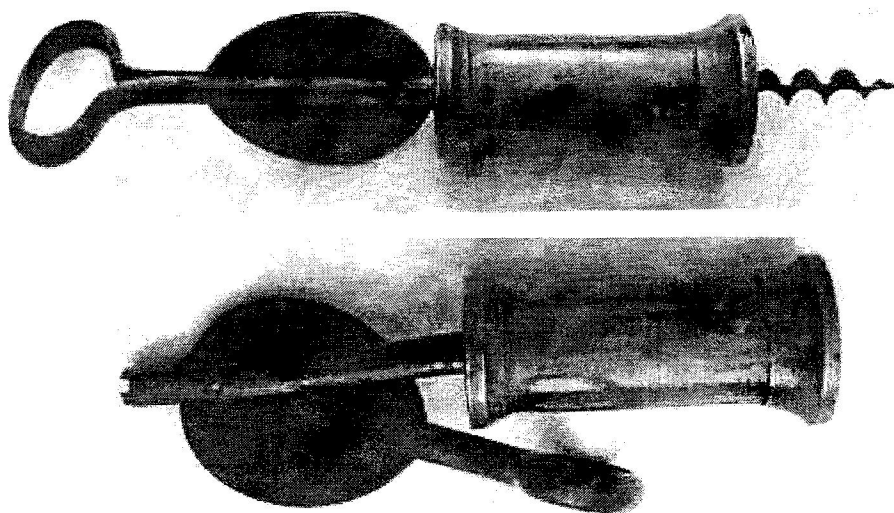
P.O. Box 1391  
Waynesboro, VA 22980-0933  
540-943-8423

gwtomson@cfw.com

Member of Family Motor Coach Association  
and The Good Sam Club  
Genealogical Researcher  
Collector of Drink, Beer and Paint Openers  
Collector of Little Golden Books  
Flea Market Enthusiast



Record Ebay Corkscrew Sale by Don Bull (with Special Note by the Editor)
--------------------------------------------------------------------------



This corkscrew listing appeared on ebay on April 21, 2000 with an opening bid of \$10.00 and 3 days until closing. Ted and Carol Harris, dealers, were selling an estate for a family in San Diego California. Ted says: "We found the corkscrew in the bar. Off their living room is a small wet bar, the size of a water closet. The bar was pretty well stocked, lots of champagne, Beefeaters, Grand Marnier, Courvosier, a 1969 red French wine (label obscured), a 1959 chianti, and a number of other wines, sorry to say, upright and pretty darn ugly. There were three corkscrews, the Zigzag, a small boxed Japanese T-shape, and this corkscrew. All were simply mixed in the drawer with the plastic stirrers, wooden toothpicks and napkins from each and every golf club between here and Tokyo, actually, several examples of each napkin - oh, and lots of coasters."

The corkscrew Ted and Carol placed on ebay was Abraham Russel's January 21, 1862 American Patent No. 34,216. The photo on the left shows the Russel ready for insertion into the cork. In the second photo, the handle has been pulled down to extract the cork. When asked if they had any idea what they had found, Ted replied "We honestly had no idea of its value. All we could say was that it looked old, hand worked and we thought it looked liked a something." Their description on ebay simply said "This old corkscrew is 8.5" long. Has some ware [sic] and rust it looks it's age."

The cam is marked Pat. Jan. 21, 1862. To sell the corkscrews on ebay, Ted says "We placed the Zig Zag on ebay with a reserve of \$65.00. The Zig Zag did not make reserve. The Russell was listed with a starting bid of \$10.00." When asked how much they expected to sell the corkscrew for on ebay, Ted said "We were looking at maybe \$100 to \$150 and knew it wouldn't fetch that much in the estate sale unless a collector happened through."

With 15 seconds until closing, the underbidder placed a bid of **\$13,450.00** pushing the winning bidder to **\$13,550.00**. There was a lot of activity on this sale, with underbidders at: 3rd: **\$13,250.00**, 4th: **\$12,012.00**, 5th: **\$10,950.00**, 6th: **\$7,999.00**, 7th: **\$5,600.00**, 8th: **\$5,000.00**. Footnote: On August 6, 1997, a Russel was offered at the Christie's South Kensington, London auciton house. The helix on it had been replaced. The sale price was 8,625 Pounds (including buyer's premium). **Special Note:** At the last minute a very serious corkscrew collector tried to enter a bid of **\$24,000**. Sadly Ebay requires any bids of \$15,000 and higher to registered before hand. The bid was denied. His bid probably would have topped the winning bidder, but we will never know. The seller also lost out with a smaller price realized. So remember when that rare opener appears on Ebay and you just have to have it and you are willing to pay \$15K, register that bid ahead of time. Hopefully your credit card has a very large limit.

"The Can Opener" Object lessons by Curt Wohleber (submitted by Joe Young)  
Information & Can Openers for Article supplied by Joe Young

# The Can Opener

**D**URING THE 1820s THE BRITISH EXPLORER William Parry led several Arctic expeditions across Baffin Bay and through miles of frozen waste toward the north magnetic pole. The explorers used a new technology to help them survive in the frigid north: canned food. Tin-coated, wrought-iron cans would allow them to carry palatable provisions almost indefinitely without spoilage. The trouble began when they actually wanted to eat the food. A can of roast veal came with these forbidding instructions: "Cut round on the top with a chisel and hammer."

A British engineer and paper manufacturer named Bryan Donkin, building on the work of the French inventor Nicolas Appert, had developed a process for preserving food in metal cans in 1812. "It is the rare artifact that does not require also an infrastructure of auxiliary artifacts to be developed," the author and engineer Henry Petroski observes in his book *The Evolution of Useful Things*. Donkin apparently figured that was someone else's problem.

Early cans were mighty fortresses of heavy-gauge wrought iron that often weighed more than the food they contained. Soldiers in the early nineteenth century attacked them with bayonets. As late as the American Civil War, hungry troops resorted to rifle fire to open them.

The first can openers weren't a big improvement. Piercing the lid required a forceful blow with a sharp instrument. Then one had to saw laboriously around the rim to get at the contents of the can. It was messy and even dangerous. Con-

sumers usually made do with their own tools or let shopkeepers open the cans for them.

The outlook brightened in the late 1850s, when manufacturers became able to produce thinner cans from steel. In 1858 Ezra Warner, of Waterbury, Connecticut, patented a breakthrough: an opener with a pointed blade that the user pressed, rather than stabbed, into the can. A metal guard kept the point from penetrating too far, to "perforate the tin without causing the liquid to fly out." A second, curved blade could then be worked to gnaw along the rim and remove the lid. Warner's patent claimed, with more optimism than prudence, that "a child may use it without difficulty, or risk."

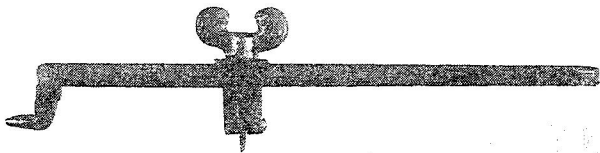
Ever since  
bayonets  
and gunfire,  
progress has  
been slow.

The first widely used domestic can opener, the late-nineteenth-century Bull's Head, was named for the sculptural shape of the cast-iron handle end that held its blade. It typically had a short, pointed blade to pierce the lid and a longer blade to slice along the rim, much in the manner of Warner's 1858 opener. The Bull's Head was so popular that today it can often be found

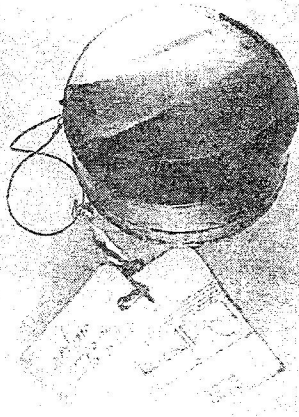
in antique shops and on eBay.

William Lyman, of West Meriden, Connecticut, had described a startlingly modern approach to can-opener technology in his 1870 patent: He introduced the cutting wheel. His design had serious drawbacks, however. You had to pierce the exact center of the lid with one end of the opener and use that as a pivot for the cutting wheel, and the device had to be adjusted to accommodate cans of different sizes.

The can opener entered the modern age in 1925, when the

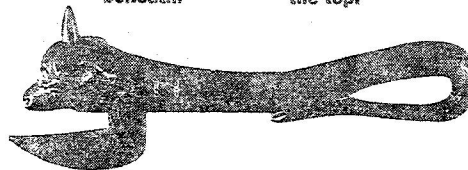


1870s  
William Lyman's cutting wheel (above) requires a puncture at dead center in the can; an early pull-tab device (right) locks both crude and hazardous.



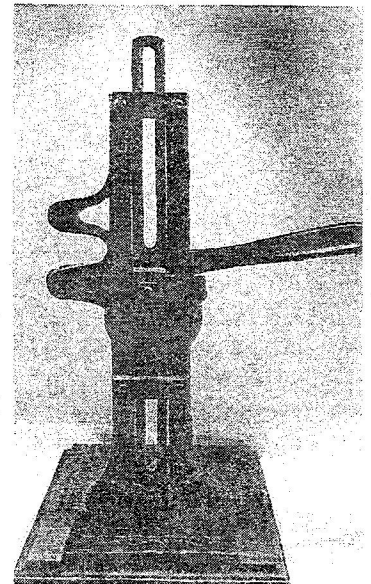
1880s:

A bull's head adds a touch of whimsy. Pierce the can with the animal's horn and before working around the rim with the blade beneath.



1888

The guillotine approach: Raise the lever, place the can alongside, and push down to lower the blade and puncture the top.



**“The Can Opener” Object lessons by Curt Wohleber (submitted by Joe Young)  
Information & Can Openers for Article supplied by Joe Young**

Star Can Opener Company of San Francisco improved on Lyman’s wheel blade by adding a second, serrated wheel, called a “feed wheel” or “turning gear,” to ride below the rim of the can. By squeezing the rim between the two wheels, the Star maintained a firm and steady grip on the can. Electric can openers, introduced in 1931, operated on the same basic principles, as they still do today.

The technology of opening beverage cans has followed a different course. Breweries and soda pop manufacturers used tin cans not for long-term preservation but as a cheap, disposable alternative to glass bottles. You usually didn’t want to remove the whole lid when the can held a drink. The familiar “church key” opener forced down a triangular flap of lid, leaving an aperture through which to sip, guzzle, or pour.

The development of extremely thin-walled aluminum cans in the late 1950s allowed for cans that could be opened without special tools. A ring attached to a scored flap on the top of the can provided easy access—and generated an astonishing amount of litter. For more than a decade discarded pull-tabs were as common as crabgrass, until beverage makers came up with tabs that remained attached to the can after opening—and such tabs became required by law.

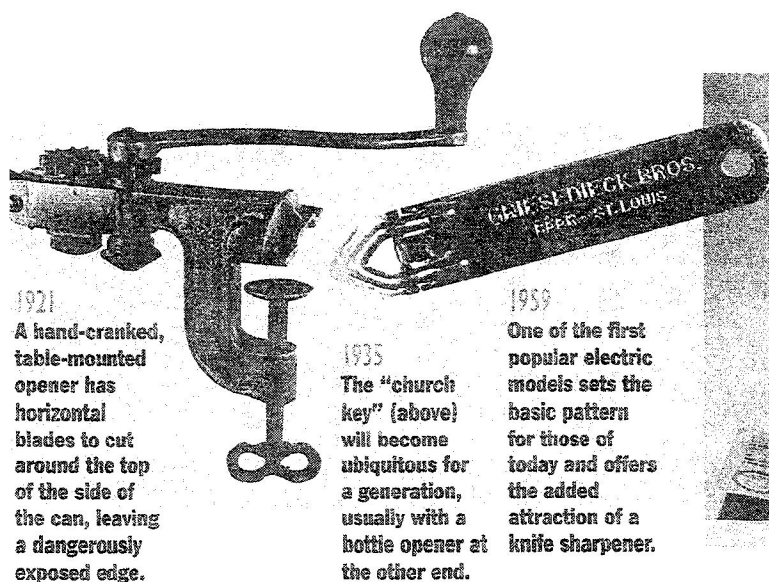
Can opener design hasn’t changed much in the last 70 years, despite ample room for improvement. The common type of hand-operated opener usually allows the lid to fall into the can, leaving a sharp-edged metal disk to retrieve. A less common design circumvents this problem by placing the cutting wheel below the rim, which therefore comes off with the lid; this leaves a sharp edge on the can itself.

Old-style openers, with a single blade for piercing and cutting, haven’t completely disappeared. Campers to this day use the so-called “John Wayne,” a standard feature on Swiss Army and other pocket-knives. Some electric openers feature a magnet that holds on to the lid, and many include accessories for opening bottles, jars, and plastic bags or, for some reason, for sharpening knives. They’re relatively inexpensive, starting at under \$20, but they compete with coffeemakers and toaster ovens for counter space.

Perhaps the coming decades will at last bring, along with dramatic strides in information technology, genetic engineering, and subatomic physics, the perfect can opener. Or perhaps, as happened with beverage cans, the package will evolve to where the opener is no longer necessary. ★



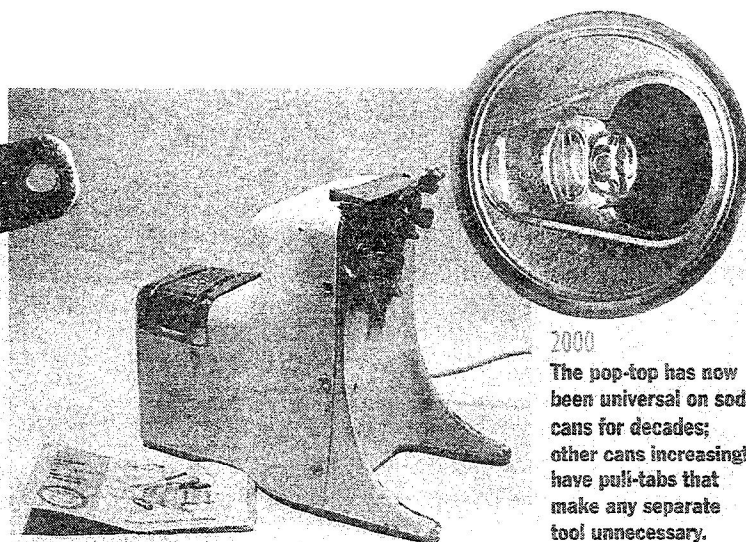
**An 1870s ad promises a more perfect solution than exists even today.**



**1921**  
A hand-cranked, table-mounted opener has horizontal blades to cut around the top of the side of the can, leaving a dangerously exposed edge.

**1935**  
The “church key” will become ubiquitous for a generation, usually with a hottie opener at the other end.

**1939**  
One of the first popular electric models sets the basic pattern for those of today and offers the added attraction of a knife sharpener.



**2000**  
The pop-top has now been universal on soda cans for decades; other cans increasingly have pull-tabs that make any separate tool unnecessary.

# Spouse's Corner

by Pat Stanley, the Editor's Spouse

John said I'd be in the corner if I didn't get my column done soon! Next he will be threatening to not be my spouse....but you all know who looked after him, or rather got help, in Chicago when he was sick.

My nursing skills are -10, so I am very grateful that Joe Young could come to our rescue. I am also grateful that I did not have to worry about Don Whelan as much as Cora did (all JFO members and spouses worried quite a bit anyways), but have no doubt that I would have been driving John to Chicago if he had been the patient.

My writing skills are wearing thin too, as I have been using them all up at work, documenting a very unusual accounting system. I even go out for short walks on campus in 90+ degree weather for a break from the composition, then back up 52 steps to my office, once again light headed enough to forget the hours already spent writing.

But here we go with the newsletters of 1982 as my focus this quarter. After sharing some of the highlights of those issues, I must add pertinent information to the index I started. I didn't get much feedback about the index at JFO, so please make comments about the format shown in the April 2000 issue now, before change becomes more complicated.

Ed Kaye was very busy in '82, cataloging over 1200 additions between the January and October 1982 issues. Amazingly a plea was made in the October issue to "continue to submit additions to the catalog of openers".

In the January '82 issue, Andy Growe found a B-18 Olympia key numbered 2793 and had contacted Olympia Brewing to find out to whom the key was issued. Unfortunately, it was in a shipment of 150 sent to the Olympia bottling plant in San Francisco, and there was no information on its eventual owner. Another Olympia was mentioned in the April '82 issue. Harold Brydon turned up #603, but it was a B-21 type. He was fortunate to find out from Olympia who this key was issued to in 1906. In the October '82 issue, Bill Ennis found a B-18 numbered Olympia, #2079. This one was sent to their Seattle sales office. Personnel there were to keep a record of to whom the individual openers were given, but their books were missing.

Don Bull announced that the book on Figural Bottle Openers was available. His catchy marketing phrase was, "You'll like it...order it".

Don's attention to detail brought a new challenge to collectors. He included pictures of a of a Storz for a right hander's corkscrew and a Sommer for the left handers. (So much for his attention to detail. He listed these as M-35s. Of course, I assumed they were M-35s. John made the correction to B-35). Regardless, I'm sure everyone did check out the direction of those spirals the day they read that for left handed corkscrews are rare.

The April issue included openers manufactured by Crown Cork based on the 1894 Painter patent. These openers were designed for use in private homes, quality all the way and described as "in keeping with the finest table appointments".

The April issue also featured a BIG "I-Type" opener, like about 3' tall, maybe taller. I could check it exactly, as it now resides in our home. Don gave it to John, probably saying, "She'll hate it...take it".

**Spouse's Corner by Pat Stanley (Continued)**

Cardone's 5th mail consignment brought an average for beer advertising openers of \$4.96 and non-beer average of \$4.71. I thought there was usually a bigger variance? The averages for Carone's 6th auction were \$5.53 and \$3.27. Herb Ashendorf's 5th auction, including openers and corkscrews averaged \$10 for beer and \$14.09 for non-beer. A number of fine figural openers brought up the average for the "other" openers.

Although J.L. Sommer Manufacturing Company had a number of patents assigned to it, there were no catalogs or ads other than one in a 1955 Newark, NJ City Directory. The ad is shown in the April issue.

In one issue, a list of new members surprised me. A JFO convention *regular* didn't join JFO until 1982. Guess Vic Keown was too busy fighting fires.

The July '82 issue featured a few "go-withs" original boxes for an Old Snifter (Volstead) cap lifter/corkscrew, a box containing an American Can Co. type I-7, and envelope for a H-3 and a thermometer that originally did have an opener attached to it. I don't know much, but I do know that you keep those original boxes, even if you can't imagine why. There is a reason, a good one, it's all about value, value added by the box.

Don Bull's quest for the September Morn painting was the highlight of the July issue that I've already included in my Spouse's Corner in the October 1998 issue.

Don has also been on many hunts for patent information. In the July issue, he listed all the known beer advertising opener design patents and asked for others to send additional patent numbers.

A cartoon was included in July, in which a spouse told another spouse that she was lucky that her husband collected stamps, as her husband collects corkscrews. Well, if stamps get wet, your investment is at real risk. If your corkscrews get wet, send them to John....he is the polishing king! I like the cartoon in the Oct. issue, where a man takes the corkscrew out of the bottle and the neck of the bottle is now twisted like the corkscrew. I'm sure that's what is happening when I struggle to open some wine with a cheap, modern corkscrew, which is my only choice after making a mistake one night when John was asleep. I took the sturdiest corkscrew I could find out of a showcase. Not a smart move, as it was also the most valuable. It was early in our marriage, so I'm still here to tell it.

Some postcard art was included in the Oct. '82 issue, all related to "September Morn". John has collected postcards and I remember going through them in Pennsylvania many years ago.

I was surprised to see a picture of a combination knife/corkscrew/cap lifter from a Mexican brewery. At the top of the same page was a corkscrew from a Canadian brewery. I can understand that one!!

This review explained more than one thing in our home. I now know that Bull had the BIG opener for at least 7 years before he gave it to John. And I know the story behind another piece in our living room, a K-12. The state of Texas sits on top of a stand and a pistol is attached. Well, the story goes that Eric Johnson, a manufacturer of crop dusting equipment in Thrall, Texas had an idea one day to use El Paso for a handle and Brownsville for a cutter. He sold several thousand with Lone Star advertising to Lone Star distributors and dealers. Mr. Johnson could only find one non-advertising opener, and generously forwarded to JFO. I think this is it's 3rd JFO home. It was in a lawyer's bookcase for years, now it's on top. I'm sure John likes dusting this creation by a crop "dusting" equipment manufacturer.

Bull's patent passion continued in the Oct. issue. He questioned a 1952 patent for a M-3 which was too similar to the one patented in 1936.

And I'm sure Bull could not rest easily until he solved the mystery behind a type Z-1. A box containing a Z-1 was marked with the Patent No. 780,149. Can you just see Bull when he discovered that patent is for a 1905 Bob Sled Runner!! It turned out that the Patent No. for the Z-1 is 2,651,511. The Patent Application No. was 780,149.

**Spouse's Corner by Pat Stanley (Continued)**

Of course you know that if I'm writing, John is probably asleep. True!! Don't guess I better wake him up to ask if he has any "Beer Nails". It says that the beer nail removes bottle caps like gangbusters and provides the conversation for an evening as well. No, I still better not wake him up!!

John, when you wake up, I'd also like to know if they ever figured out if there were picks used to open bottles as shown in a Pabst Blue Ribbon picture.

Another mystery surfaced in the Oct. issue, "Who really invented the crown cap?". Crown, Cork and Seal Company claims that William Painter is the father of the crown cap. Alfred L. Bernardin of Evansville, Indiana disagrees. He claims he invented the beer crown. His grandfather founded the Bernardin Bottle Cap Company in 1881. Bernardin's factory superintendent disappeared and apparently ended up hired by five men who were founders of Crown Cork and Seal Company. You get the picture.

There was something in the Oct. issue that caught my eye. As the collectors interest grew, business cards for the collectors also increased. Bull asked people to send their cards for future issues. That's a neat idea. It will be no surprise to find email addresses on those cards today!! Send your card for publication!! One good thing. Most collectors have accumulated too much to ever consider moving, so your cards don't change except for area codes, zip codes, and email addresses.

Time to go check email. Always some from JFO friends!!

Good Night!! And Special Wishes for all Spouses.

**"Right to the Point with a H-2 Over-The-Top Opener" (by Don Bull)**

## Right to the Point

It's time to take a close look at all of your H-2 openers.

These openers are shown in Vaughan Novelty Manufacturing Company's catalog folder dated March 25, 1935. We've all seen hundreds of the No. 104 "Over the Top" style opener. But have we looked closely? Do any of yours have the No. 91 piercing stud type?

How about you Harriet?

...Don Bull

**No. 104 "OVER THE TOP"**

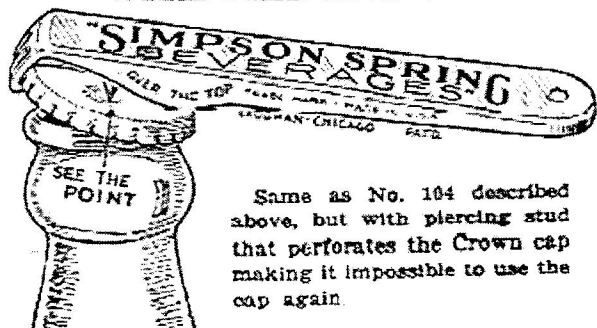


With Your Adv. Stamped.  
Packed in Boxes of 250  
Double Plated, Nickel Finish  
Weight Approx. 33 1/2 lbs.  
(15.3 kilos) per M.

Illustration Shows Special  
Die Stamping

Quantity	250	500	1,000	2,500	5,000	10,000
Price.....	\$6.00	\$10.00	\$15.50	\$13.50M	\$12.00M	\$11.00M

**NO. 91 "OVER THE TOP"  
WITH PIERCING STUD**



Same as No. 104 described  
above, but with piercing stud  
that perforates the Crown cap  
making it impossible to use the  
cap again.

Price: Add 40c per 100, any quantity, to prices  
shown above for No. 104.

<b>"Opener Trivia"</b>
------------------------

Herb Danziger wrote that Art Santen's apparatus in the April issue was used in laboratories for transferring liquids. Todd Milano also wrote offering a Champagne Tap as a good comparison but Herb hit the nail on the head. Thank you both for writing. First is a list of general sales from Ebay followed on the next page by a list of my purchases.

A-001-074	Excelsior	\$59.58
A-003-045	Taylor	\$22.19
A-004-001	Bergdoll (Ex)	\$50.00
A-005-999	1933 Chicago	\$20.00
A-009-999	Coca-Cola (Fake)	\$56.00
A-012-999	Coca-Cola (Fake)	\$71.00
A-012-999	Coca-Cola (Not Fake)	\$199.00
A-017-011	Cream City	\$44.69
A-017-999	Coca-Cola	\$103.50
A-017-999	Coca-Cola (Bad Nose)	\$62.00
A-021-062	Old Union (Fair)	\$36.69
A-029-069	Broadway	\$20.49
A-035-034	Moerschel	\$44.50
A-040-001	Inland	\$168.81
A-041-001	Medford	\$78.78
A-047-001	Luxus	\$280.50
B-002-043	Eagle	\$46.00
B-018-204	Paducah	\$25.16
B-019-128	Huebner	\$41.00
B-021-024	Grand Rapids	\$53.00
B-021-135	Schaller	\$30.99
B-021-203	Renner & Weber	\$30.00
B-021-244	Fauerbach	\$34.33
B-023-003	Blumer	\$30.99
B-023-999	Coca-Cola (Spinner)	\$78.77
B-024-053	Mathie-Ruder	\$20.01
C-010-012	Koerber	\$41.00
C-012-125	Knapstein	\$65.32
C-013-117	Weibel	\$38.00
D-001-001	A.B.B.A (B)	\$51.86
E-001-016	Belmont	\$26.00
E-001-021	Fehr	\$20.00
E-002-026	Oxford	\$26.00
E-007-019	Lackman	\$22.22
E-008-999	Chelmsford	\$20.50
E-008-999	Chelmsford	\$41.01
E-009-999	Mecklinburg Springs	\$32.01
E-014-304	Williams	\$31.50
E-015-999	Christy Oysters	\$26.55
F-009-002	Narragansett	\$78.77
F-027-999	Coca-Cola (Salina)	\$59.58
G-005-006	Lion	\$128.50

G-005-006	Lion (Opener Broke)	\$49.88
G-005-039	Bartholomay	\$49.99
G-009-999	Orange Crush	\$77.57
H-002-999	Hires	\$56.55
K-004-001	Pabst (A)	\$190.01
K-006-001	Pearl (Near Mint)	\$229.49
L-002-999	Jackson Napa Soda	\$127.63
M-003-020	Liberty (VG)	\$107.51
M-003-024	Gunther (Ex)	\$78.79
M-003-026	Heurich (VG)	\$168.35
M-073-013	Heurich	\$235.35
M-084-001	Neuweiler	\$113.67
N-029-999	Dr Pepper	\$282.25
N-037-003	Scheidt	\$39.00
N-041-002	A-1 (Bottle)	\$38.75
N-502-999	Chero-Cola	\$77.57
O-004-999	Orange Crush	\$24.53
O-005-999	Climax	\$36.50
O-005-999	Climax	\$51.75
O-005-999	Nehi (w/ Bottle)	\$178.25
O-502-999	The Liquid	\$70.61
O-505-999	Mavis	\$155.47
O-505-999	Mavis	\$108.50
O-505-999	Nehi	\$128.01
O-505-999	Nehi	\$229.72
O-505-999	Nehi	\$227.55
O-505-999	Whistle	\$130.27
P-005-001	Anheuser-Busch	\$82.25
P-007-025	Leisy (MIB)	\$152.51
P-013-001	Schlitz (Worn)	\$106.16
P-017-008	Lion	\$102.50
P-024-009	Coors (Near Mint)	\$154.67
P-025-003	A-B (No Pic VG)	\$175.00
P-025-003	A-B (Schrade Ex)	\$400.00
P-025-003	A-B (Spread Eagle Ex)	\$462.99
P-025-005	A-B (Near Mint)	\$959.00
P-065-001	Hamms	\$135.83
P-115-001	Latrobe	\$338.33
P-503-999	Clicquot Club (Copper)	\$92.50
P-503-999	Clicquot Club (Copper)	\$112.50
R-003-006	Iroquois (Brass)	\$75.00

"Opener Trivia" (Continued)		
-----------------------------	--	--

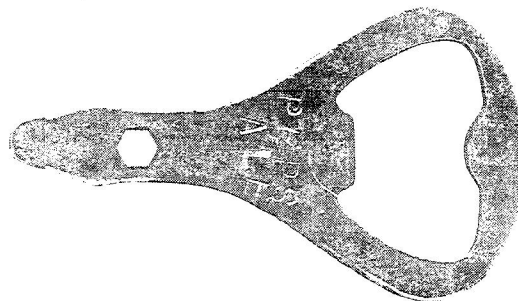
A-001-999	Coca-Cola Baltimore	\$153.03
A-001-999	Cochecco	\$17.50
A-004-025	Donora	\$45.65
A-021-113	Barbarosa	\$9.38
E-004-174	Indianapolis	\$5.74
E-004-999	Coca-Cola	\$90.00
E-007-039	Sweetwater	\$6.51
E-022-999	Vernors	\$44.50
F-006-049	Broadway	\$9.70
F-006-999	Nehi	\$24.25
F-006-UL	Consumers Buffalo	\$23.49
L-002-019	Terre Haute	\$131.09

M-002-020	Bola (VG)	\$19.95
M-019-024	Stag	\$26.00
N-034-999	Coca-Cola	\$26.00
N-045-001	Metz	\$20.00
O-004-013	Miller	\$15.50
O-004-999	Walker's Whiskey (Larger O-4)	\$41.00
P-001-017	A-B Clough's Patent	76.04
P-019-UL	Reno	\$16.26
P-155-UL	Falstaff	\$105.02

It was slow for me but as you can tell from general sales, good openers just keep on appearing. The most surprising was a broken G-5-6 Lion with no opener bringing \$49.88. Crazy bid but two people wanted it real bady. For the most part I selected higher priced openers. Many, many more openers were sold with most sales being \$10 and less.

Pat Stambaugh attended a local New Ulm, Minnesota auction in early May. He reported that several boxes of 250 E-14 Hauensteins brought \$35-40 each. Trying to get rid of 250 of any opener would be tough but when hundreds appear on the market, I would hate to pay a penny each. At the same auction 26 R-7-1 Hauenstein Pretzel openers were sold with the high price being \$90, the low end was at \$55 and most brought in the \$70 range. Amazing that with so many being offered the price held up well. I guess the \$125 I paid for mine would be "a little" on the high end now. You can't win them all.

The opener at the right was found by Bruce Morrison. It advertises "Peps Ale", does anyone know its origin?



The May 5<sup>th</sup> newspaper for Harrisburg, PA contained an article on the sealing of a time capsule. Wouldn't you know someone put in a can opener and explained that, "can openers have been in existence for years and years and that he'd be curious to see if people knew what it would be 100 years from now". Hopefully they will. Thank you Todd & Hale Milano for sending this in.

Don Bull produced the following article on the Vaughan Manufacturing Company. Probably the largest producer of openers ever, and they seemed to have disappeared from the Chicago, IL manufacturing scene sometime during the 1980s. Anyone with any additional information or any opener packaging not shown, please contact Don Bull at: PO Box 596, Wirtz VA 24184 or email him at [corkscrew@bullworks.net](mailto:corkscrew@bullworks.net). Don is particularly interested in any of the following:

- 1) Additional information on Vaughan
- 2) Vaughan catalogs and advertisements
- 3) Photos of Vaughan products with original packaging

Thank you very much Don for your contributions in this issue and for this great article.



"Opener Trivia" (Continued) "Vaughan Novelty Mfg. Co." (by Don Bull)

## Vaughan Novelty Mfg. Co.

by Donald Bull



Vaughan was founded in 1910 as the Crown Throat & Opener Company. The earliest catalog I have found from Vaughan is No. 7 from September 1919. At that time Vaughan was at 703 Fulton Street in Chicago.

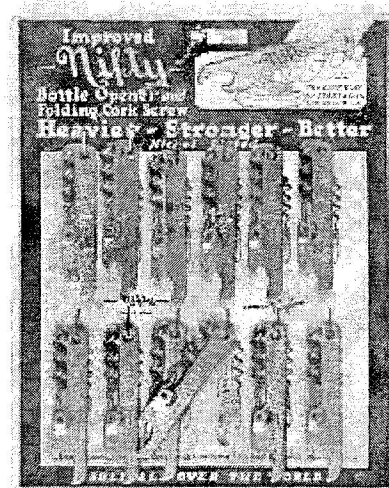
Openers in the 1919 catalog included a combination button hook bottle opener, screw driver and cigar cutter; the "Dairy" lifter; a can opener with bottle opener and corkscrew; the "Dainty" corkscrew; an "Over the Top" opener; the "Perfection" opener, the "Never Chip" wall mount; several key style and figural openers, and the "Nifty."

The 1922 catalog is only three years later but the number is 25 and now the company is located at 3211 Carroll Avenue at the intersection of Kedzie Avenue. Vaughan's new building was completed in 1920. An "Over the Top" opener with a pin under the lifter was added to puncture the cap when using it.

Harry Vaughan introduced his 1927 Vaughan Novelty Manufacturing catalog with "The ever growing business coming to me from all sections of the world, serves to increase the feelings of responsibility I have always felt towards my friends among the Bottlers. Their loyalty incurs upon me the duty not only of maintaining the quality and service that brings me their yearly specifications, but of constantly improving, by every possible means, the machinery of factory and office by which I serve these valued friends."



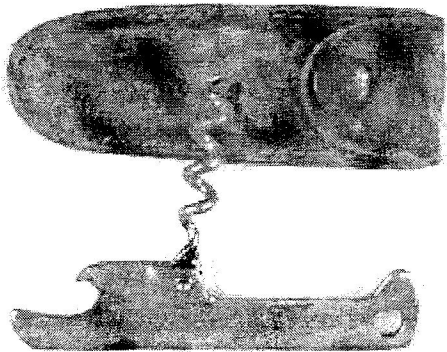
One of the most frequently found Vaughan products is the "Nifty". This combination cap lifter and corkscrew was invented by Harry L. Vaughan in 1916 and was sold by the millions in subsequent years. A 1939 Canadian catalog said that 38 million had been sold. They were still listed in 1949 in a Vancouver hardware catalog for 25 cents each.



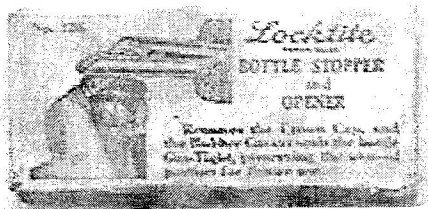
The counter display card of Improved Nifty Bottle Opener and Cork Screw reads "Heavier, Stronger, Better. Nickel-plated. The easy way to start a cork, lift up on handle. Nifty trademark, copyright Vaughan, patented and sustained. One dozen combination bottle

"Opener Trivia" (Continued) "Vaughan Novelty Mfg. Co." (by Don Bull)

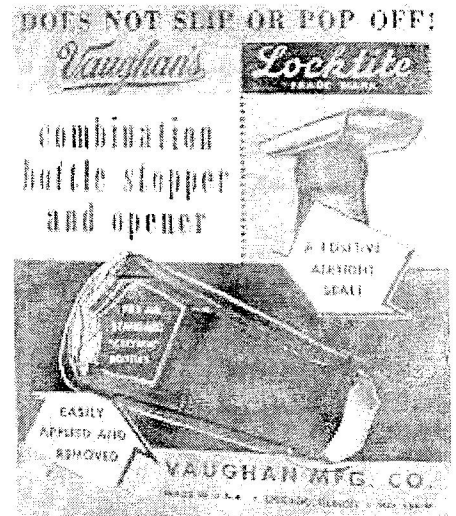
opener with cork screw No. 63-C improved. Made in U. S. A. Card printed in Chicago. Sold all over the world." In a 1932 catalog from Caverhill, Learmont & Co., Limited, Montreal the cards with corkscrews are offered at \$1.20 per dozen.



The Nifty bottle opener and corkscrew could also be purchased in a leather pouch. This pouch advertises Ruscon Steel Company, Youngstown, Ohio.

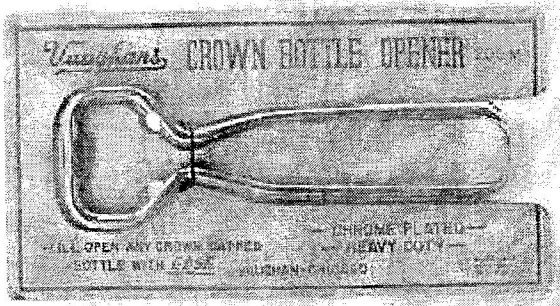


The "Locktite" Bottle Stopper and Opener. "Locktite" appears in the 1919 and 1922 catalogs as a trade mark for Vaughan's key chain fastener. It is note shown in the 1927 catalog but does appear in 1935 at prices ranging from \$8 per hundred to \$3.80 per hundred in quantity of 10,000.



In a 1927 this cast iron bottle opener is shown as the No. 175A "Open-All (no "s" on open) and it has a hanger hole in the narrow end. In the example shown here (No. 178), a lid prier has been added on the blunt end. The opener is not shown in Vaughan's 1935 catalog.

"Opener Trivia" (Continued) "Vaughan Novelty Mfg. Co." (by Don Bull)



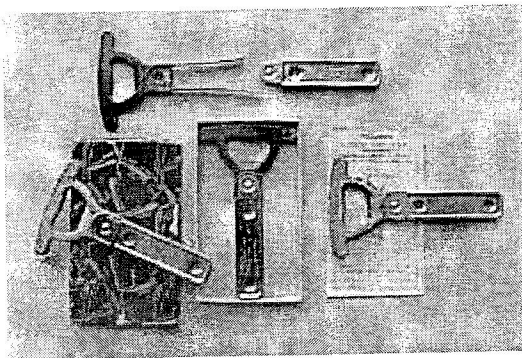
Wire bottle openers do not appear in the 1919, 1922, or



1927 catalogs. In the 1935 catalog there are six varieties which are "made of a special grade of steel wire" and "are finished in either bright copper or nickel plate." A combination spoon and bottle opener is also shown.

Advertisements on wire openers were stamped with raised letter on one or two sides.

A 1933 Vaughan advertisement in *The Coca-Cola® Bottler* offered a spoon / opener, a single stem opener, and two figure eight openers with advertising "Drink Coca-Cola in Bottles" with the notice that they were in stock for prompt shipment.



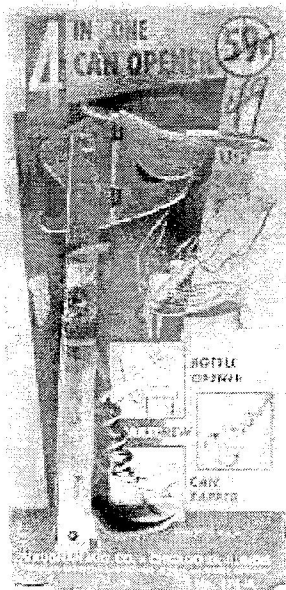
The "Quick and Easy" prong puller was offered in the 1935 catalog at prices ranging from \$12.50 for 50 pieces up to \$90.00 per thousand for a purchase of 10,000. This puller is seldom seen with advertising. One example shown here advertises "Liquor Industries Wholesale, 360 N. Michigan Ave., Chicago."



Vaughan's Safety Roll Jr. was on counter display and on individual sales card.



<p>"Opener Trivia" (Continued) "Vaughan Novelty Mfg. Co." (by Don Bull)</p>
-----------------------------------------------------------------------------



Many varieties of the Vaughan hand held can openers can be found with prices stamped right on the handles. These were designed to be packaged in bulk sold on housewares racks without benefit of display cards. The Vaughan opener shown here is a little more complicated than the lightweight examples with folding worm and was even discounted!



On April 2, 1935, Dewitt Sampson and John M. Hothersall were granted U. S. Patent Number 1,996,550 for their can opener invention. In Vaughan's "Quick and Easy" can opener the underside of the handle is formed with finger grips.

In 1976 Vaughan issued catalog No. 122 and billed the company as "World's Largest Manufacturer of Can and Bottle Openers." Their address was then 900 North Kilpatrick Avenue. By the early 1980's the Vaughan line included:

- No. 179 Beverage Spoon and Bottle Opener
- No. 56 Easy-Slyde Shoe Horn and Bottle Opener
- No. 204-A Paint Can and Bottle Opener
- No. 400 Tap Boy with corkscrew.
- No. 425 Quad-fold
- No. 1 Never Chip Wall Bottle Opener
- No. 936 Stationary Can Opener
- Three Flat Cap Lifters
- Two Wire Type Cap Lifters
- Four combination can opener / bottle cap lifter



**DONALD A. BULL**  
Corkscrew Collector

P. O. Box 596, Wirtz, VA 24184, U.S.A.  
540-721-1128

**DuPage man hooked on collecting bottle openers, corkscrews**

By Karl Allen, Daily Herald Staff Writer

Norm Jay knows where some of the best bottle and can openers in the world are probably kept.

"In the glove compartments of cars and in fish boxes, too. A lot of people don't attach any value to this," the Wheaton man says.

But Jay does.

His attachment to openers of all sorts is apparent to anyone standing in his basement.

Openers are hung on a paneled wall, dangling from the types of hooks that often hold keys. A rotating display showcases hundreds more, and parts of his collection, including corkscrews, are stored in glass cases.

He owns mainly beer openers of all shapes and sizes: pieces shaped like bottles, tigers, legs, pencils, fish, pretzels and turtles.

Unlike some collectors, Jay isn't interested just in openers of a certain year, state or kind. He likes 'em all.

"I've always been challenged by the thrill of the hunt," Jay says.

He and other members of Just For Openers are venturing this week to a convention at the Hyatt in Lisle, to see if they can hunt down anything else they like.

Jay was planning on about 50 of the group's 325 members from around the country to attend several days of the convention.

The expo was open to club members from Wednesday through Friday and will be open to the public from 9 a.m. to 2 p.m. today.

Collectors of beer, soda and cigar box openers and corkscrews will be able to buy, sell and trade pieces to add to or weed out their collections.

Similar conventions and frequent travels have earned Jay 3,200 openers.

"I've been a collector of something all my life, and I've been traveling all my life," Jay says.

He's been searching for and accumulating openers for 30 years now. Once he started, his desire to gain more openers just kept growing. His collection has grown so big that if he wants to bring another piece into his home, he has to take something else off the wall.

And to find a new opener, at this point in his collecting experience, is rare.

But he keeps his eyes open. And he plans on staying at Just For Openers for a while.

"There's a camaraderie among these folks. ... Some of my best friends are collecting these things all around the country," Jay says.

The convention, which is in its 22<sup>nd</sup> year, has made its way all over the country, including Naples, Fla.; San Francisco; and Buffalo, N.Y.

Several years ago, the expo was held at the Hyatt in Lisle and now is back again. The group tends to pick up a few new members every time the convention comes around, Jay says.

The organization mainly operates by word of mouth.

"I hope people realize there are other nuts out there besides themselves and that they want to join the club," Jay says. "The club's done me a lot of good."

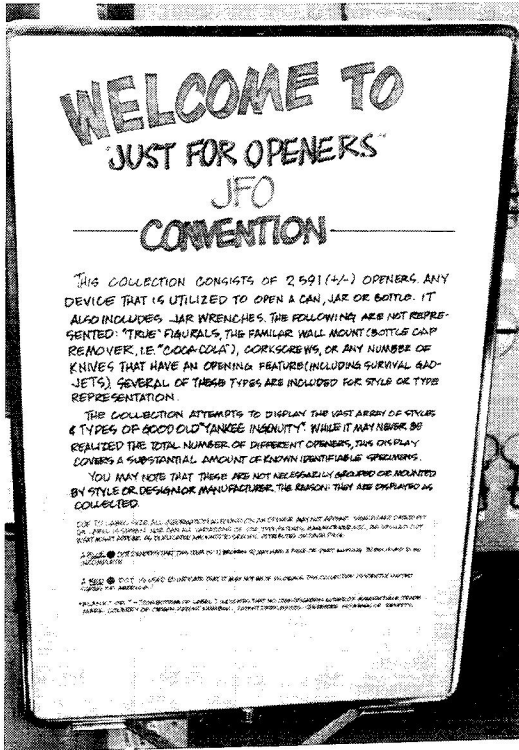
Nice article about one of our best members. Thanks again Norm and Judy for a super job on the convention. Glad the club has done you a lot of good, because you have done the club a lot of good. Thanks also to Joe and Jackie Young for sending this article in.

<b>July New Members, Renewals, Address Changes &amp; Corrections</b>
----------------------------------------------------------------------

**Just For Openers now has 325 members (New Members: Numbers 962-967)**

Mem #	Last Name	First Name	Spouse	Street	City	State	Zip	Phone	E-Mail	Specialties/ (Sponsor)
620	Asplund	Robert	Bette	32732 Early Rd	New Carlisle	IN	46552-9674	(219) 654-7069		(Rejoin)
965	Doughty Jr	Albert		415 N Zane Hwy	Martins Ferry	OH	43935-1626			Belmont Brewing Co Breweriana and All Beer Openers (NABA)
823	Engelbrecht	Ken	Susan	22 Rainey Rd	Crawford	TX	76638-3317	(254) 486-2230		Advertising, Beer, or All Old Unusual/Unique Openers (Rejoin)
187	Green	Craig	Sue	2715 67 Crt SW	Olympia	WA	98512-7101	(360) 956-9051	recordm onger@ msn.co m	Pre-Pro Washington/Oregon/Idaho Openers (Beer Only) (Rejoin John Cartwright)
537	Hartzog	Rich		PO Box 4143	Rockford	IL	61110-0643	(815) 226-0771	hartzog @exonu mia.co m	Rockford IL, Freeport IL, Belvidere IL & "Saloon" on Anything (Rejoin John Bitterman)
966	LeClair	Gerald	Barbara	1326 County Road 47	Henerson	AR	72544-9121	(870) 488-5556	jerrico_0729@yahoo.com	Adv (Liquor, Beer, Soda) Nothing After Punch Type, Only Older Openers (Have 500) (JFO WWW)
812	McLellan	Gerry	Tatiana	4811 Washington St	West Roxbury	MA	02132-2114	(617) 363-9967	gmclellan@webtv.net	Beer & Soda, A & B
964	Plauck	Dave	Jackie	609 Colville Pl	Waukegan	IL	60087-5028	(847) 249-4125		Beer Openers (Norm Jay)
945	Sklow	David	Sherry	8737 SW 97th Lane Rd Unit C	Ocala (Address Change)	FL	34481-8467		sdsklow@aol.com	Openers with Spoon on End
962	Strohman	Steve		PO Box 1899	Apple Valley	CA	92307-0036	(760) 240-3684		(John Patton)
963	Szymczyk	Danny		9 B Moore Rd	Haines City	FL	33844-8698			Beer Bottle Openers (Cymba WWW)
363	Thompson	Thom	Frances	123 Shaw Ave or (Work) 1389 Alexandria Dr Ste 7	Versailles or (Work) Lexington	KY	40383-1157 40504-1777	(859) 873-8787 (859) 255-2727 (New Are Code)		Coca-Cola Openers-Vintage & Lexington, KY Brewery Openers & Opener Literature
967	Vey	Randy		7 Deer Park Dr	Monmouth Junction	NJ	08852-1921	(732) 329-8300		Just Starting (JFO WWW)

JFO 22<sup>nd</sup> Annual Convention Chicago (Lisle) IL (April 26-30 2000) (Pictures)

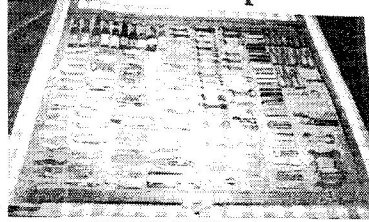


Dick Britton's JFO Welcome Sign

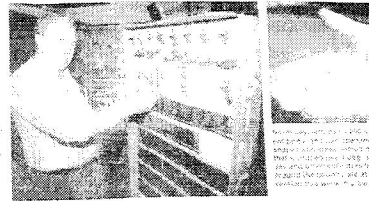
Collector hooked on openers

Prized possessions will be on display this week in Lisle.

By Norm Jay  
LISLE, Ill. (JFO) — Dick Britton's collection of 2,591 (+/-) openers is the largest in the world. The collection is on display at the JFO 22nd Annual Convention in Lisle, Ill., from April 26-30.



Some of Dick Britton's 2,591 (+/-) openers are shown in glass display cases at the convention.

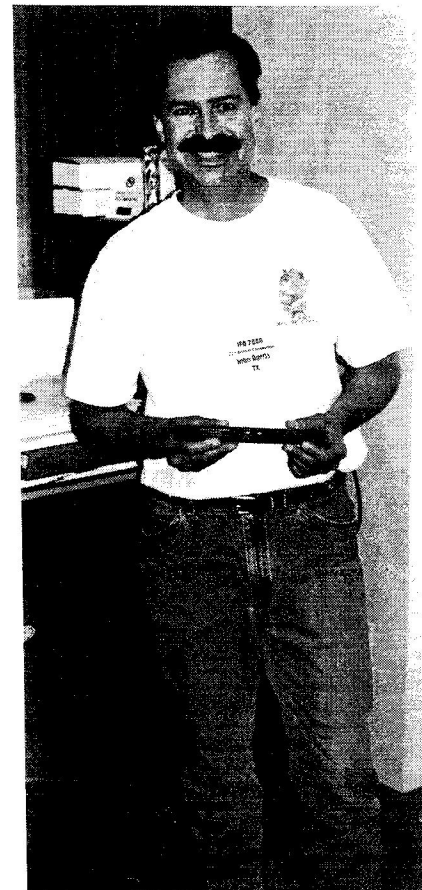


Dick Britton's collection of 2,591 (+/-) openers is the largest in the world. The collection is on display at the JFO 22nd Annual Convention in Lisle, Ill., from April 26-30.

Norm Jay's Local JFO Paper Article



Opening Night at the local Brew Pub (left to right) Pat Stanley, Joe & Jackie Young, Don & Cora Whelan, Don Sherman, Art Santen (kneeling), John Stanley, Gary Deachman (kneeling), Mark Barren, Larry Moter And last but not least Vic Keown



Jeb Burruss and an N-27 Lone Star ???

JFO 22<sup>nd</sup> Annual Convention Chicago (Lisle) IL (April 26-30 2000) (Pictures)



Hospitality Room Time with Kay Schmidt, Cora Whelan, Bonnie Teggatz  
(Right) Shirley Hibbeler & Camille Danziger



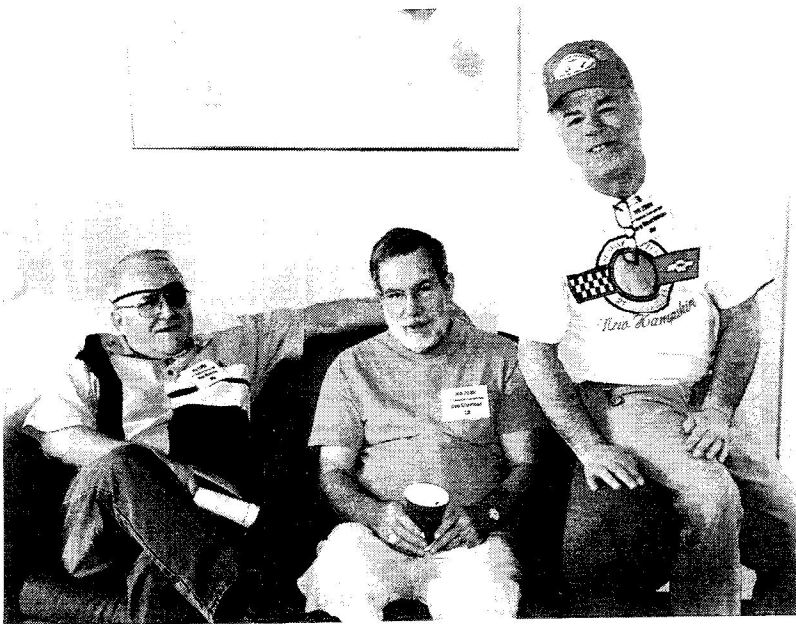
Pat Stanley, Jackie Young, Cora Whelan  
(Below) Bob McNary's "Better Half" Gloria Counts



Despite Heart Surgery the Week Before, a mild stroke and sight in only eye, no way Don Whelan was going to miss the convention



JFO 22<sup>nd</sup> Annual Convention Chicago (Lisle) IL (April 26-30 2000) (Pictures)



Room-To-Room Trading with Don Whelan, Don Sherman, Gary Deachman



Dave Lendy with a N-17 & N-13 (he was spending some money in my room)



John Bitterman with those "tater chip" racks full of openers



Norm Jay starting the Seminar Session

JFO 22<sup>nd</sup> Annual Convention Chicago (Lisle) IL (April 26-30 2000) (Pictures)

Right Left Half of the Seminar Crowd, that's Shirley Willmott & Glen Thompson (right Front)

(Below Left) Anna & John Hall all the way in from Sebring FL



(Above Right) Marge Stahly & Shirley Hibbeler have to be stirring up trouble (like talking instead of listening, not these 2)

Right half of the Seminar Crowd, Everyone couldn't wait to hear about Ebay and buying openers through the computer, just what I need More Competition!!!



JFO 22<sup>nd</sup> Annual Convention Chicago (Lisle) IL (April 26-30 2000) (Pictures)



Pat & John Stanley giving the Seminar



Vic Keown, Bill Arber, Jeb Burruss & Harold Queen checking out Auction Items

O-6-UL Jax that Bob Post and I both had to have and I just came out ahead at \$125

Verne Vollrath calling the Auction



JFO 22<sup>nd</sup> Annual Convention Chicago (Lisle) IL (April 26-30 2000) (Pictures)



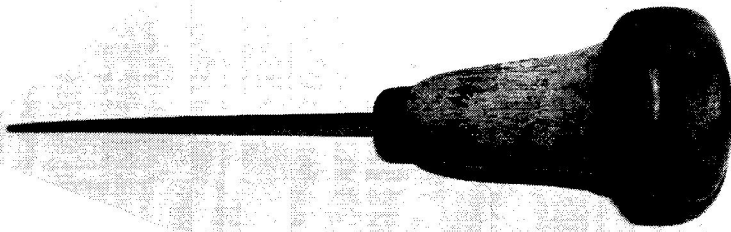
Part of the Friday Afternoon Auction Crowd  
(Top) The left side crowd headed by Art Santen  
(Bottom) Robert Pommerville heads right side

Table of Auction Goodies, we had a lot of Satisfied buyers and sellers

Gary Deachman trying to get bids on a Syroco "Waiter"

Thanks again Verne and LaVerne Vollrath for another great JFO Convention Auction

JFO 22<sup>nd</sup> Annual Convention Chicago (Lisle) IL (April 26-30 2000) (Pictures)

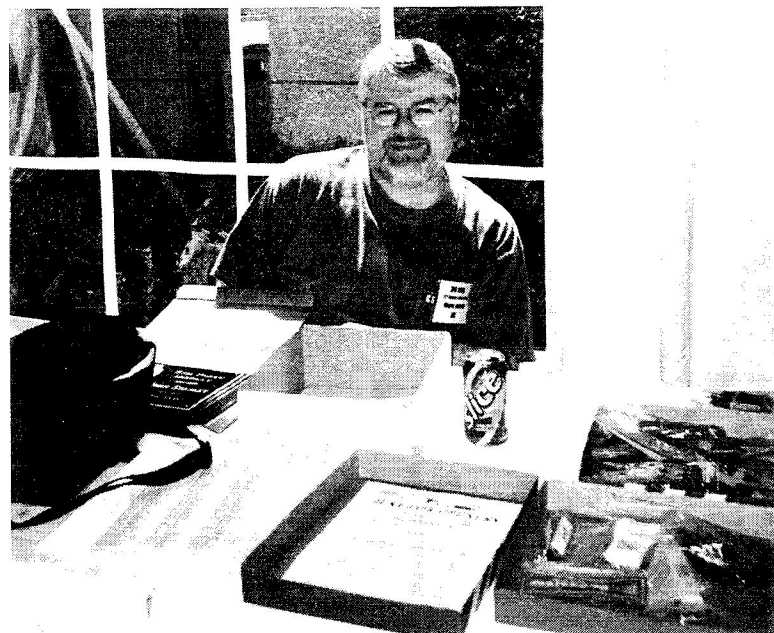


(Top) Bill Brunner owns this Ice Pick with an opener cut into the end of the Handle!

Past and Current JFO Convention Hosts  
(Left to Right) Front: Norm Jay, John Stanley, Larry Biehl, Don Whelan, Back: Art Santen, Ollie Hibbeler, Don Bull, Ben Hoffman, Gary Deachman, Herb Danziger, Mark Barren, Bob Stahly and Vic Keown

(Top Right) As usual we always have a couple of Stragglers: Bob McNary (last year's host)

(Bottom Right) Our last straggler host, Roger Jarrell, Bob and Roger were down the Hallway checking out rooms when the big picture was taken, there's always next year



JFO 22<sup>nd</sup> Annual Convention Chicago (Lisle) IL (April 26-30 2000) (Pictures)

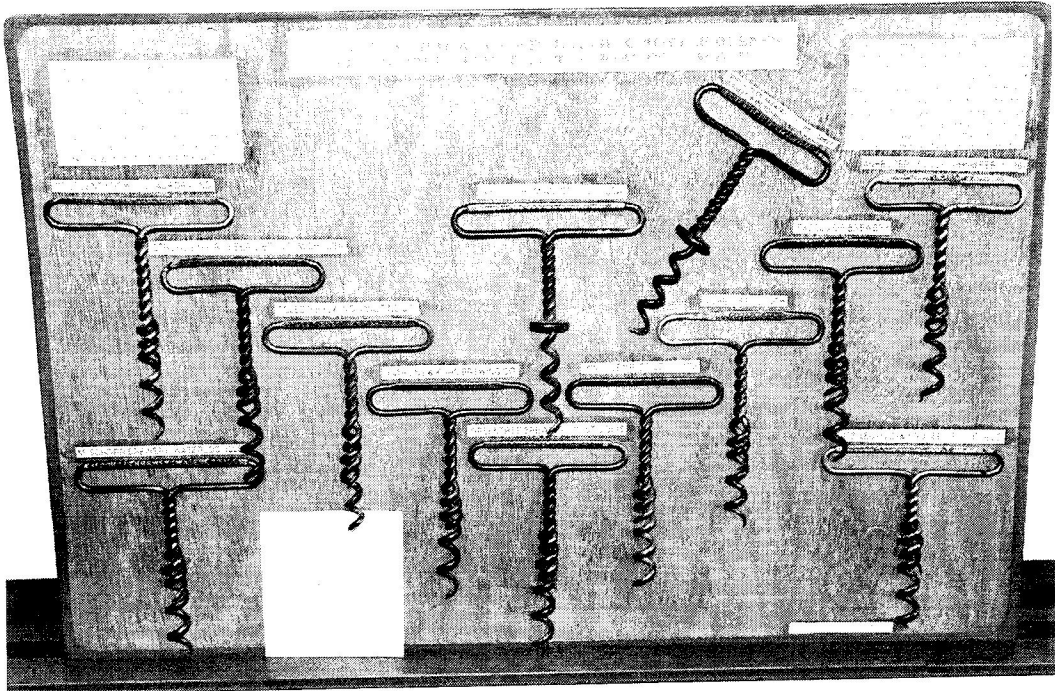


Display Contest Award Winners:  
 (Top) Ollie Hibbeler 1<sup>st</sup> Place (be there next year)  
 (Top Right) John Stanley 2<sup>nd</sup> Place  
 (Bottom Left) Bob Stahly 3<sup>rd</sup> Place  
 (Bottom Right) Tom Gormally wins the  
 "Bill McKenzie Best Of Show Award"  
 (Right) Tom's winning display of Bechtal  
 Brewery P-51 and a Bechtal Bottle

All Plaques presented and made up by  
 Convention Host for 2000, Norm Jay

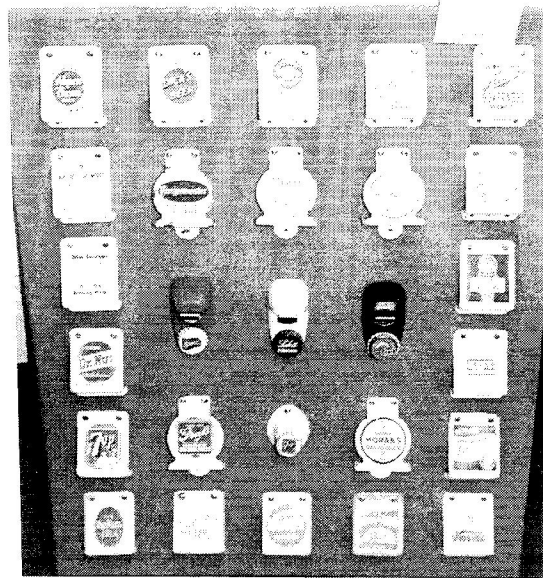
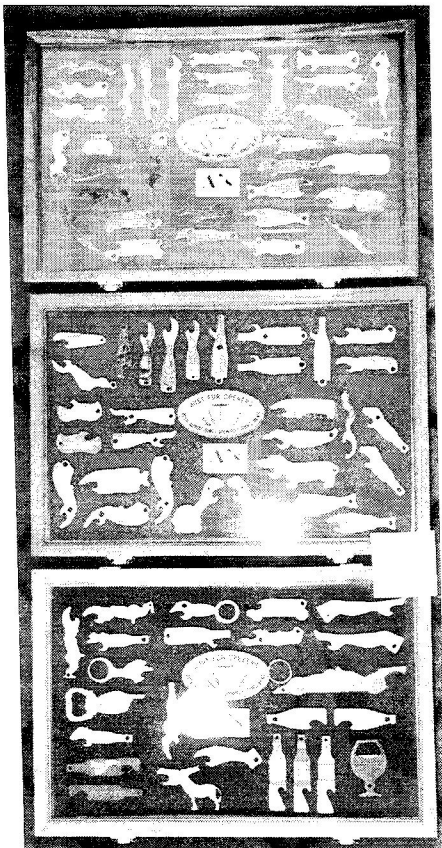


JFO 22<sup>nd</sup> Annual Convention Chicago (Lisle) IL (April 26-30 2000) (Pictures)



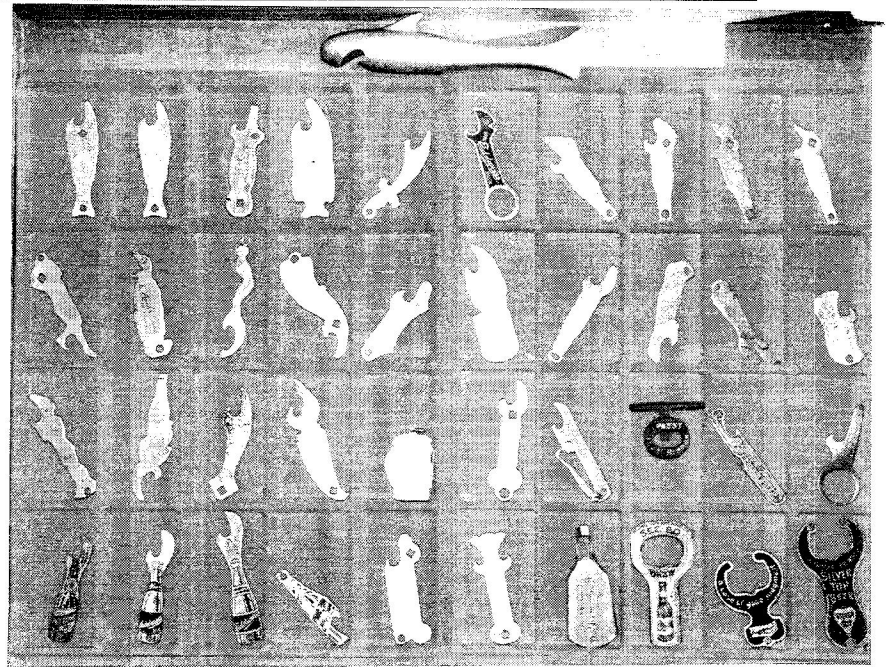
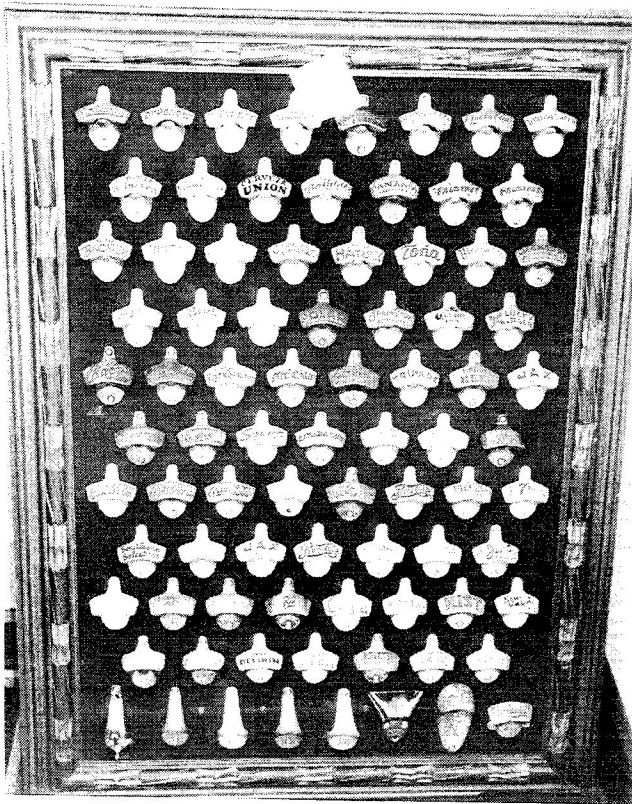
(Top) Ollie Hibbeler's Beer Wire Corkscrew display which garnered him First Place

(Below Left) John Stanley's "A-Type" display which took Second Place

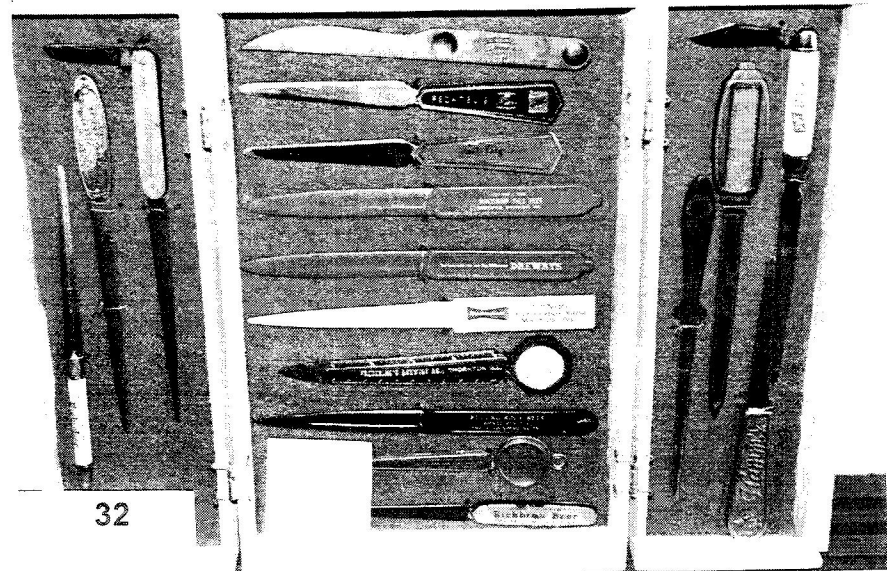
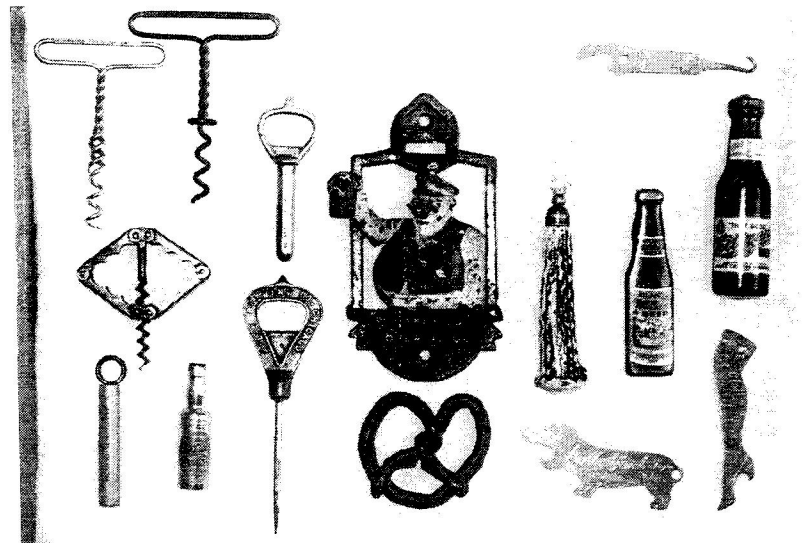
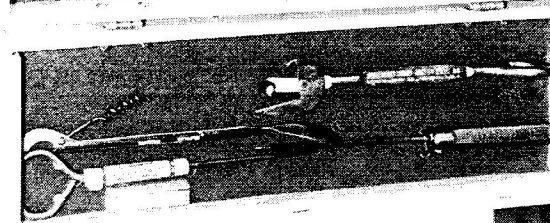
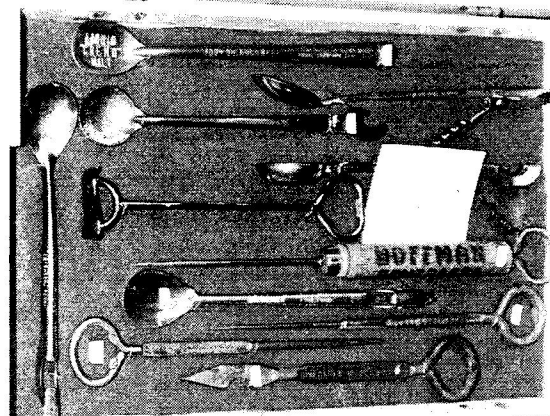
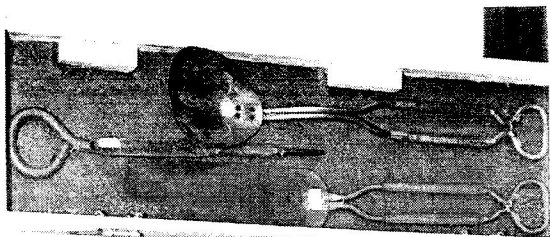


(Above) Bob Stahly's Third Place display of Wall Mounts  
That's a lot O-2s, O-6s and O-14s with a new type O-514

JFO 22<sup>nd</sup> Annual Convention Chicago (Lisle) IL (April 26-30 2000) (Pictures)



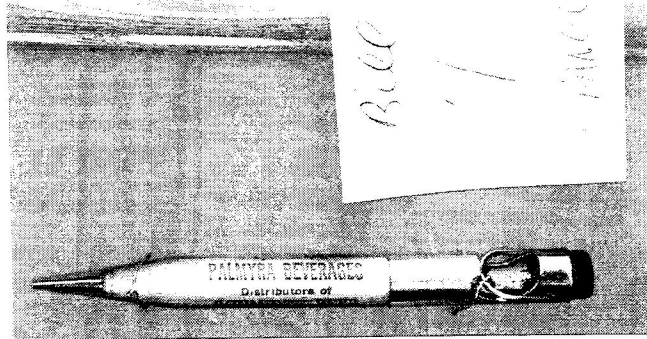
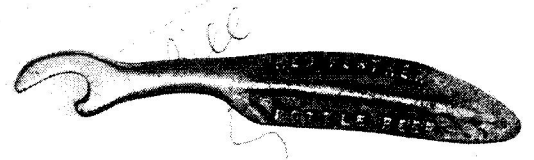
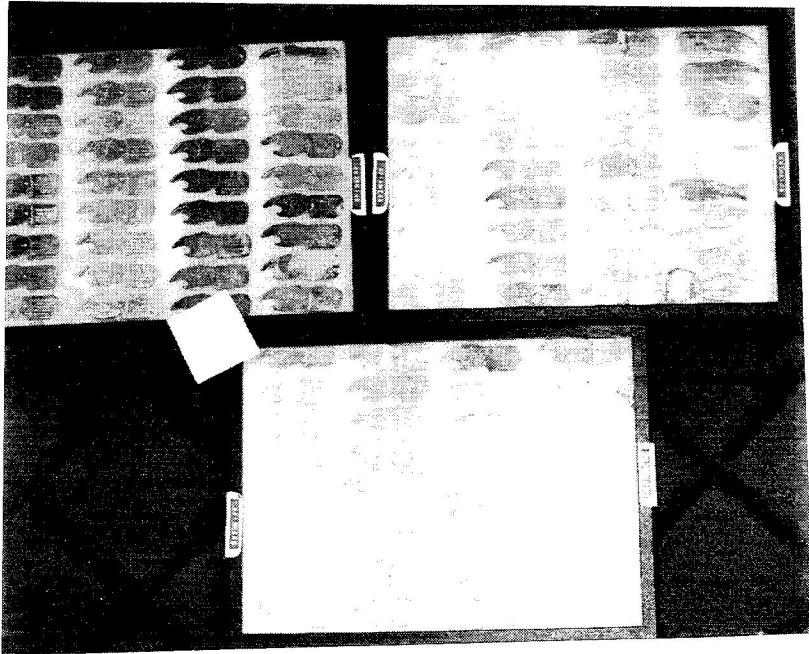
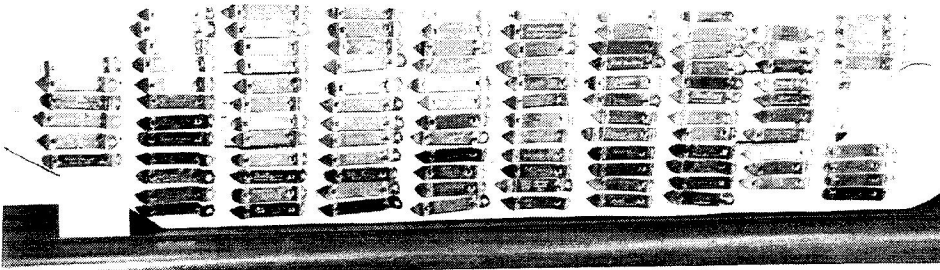
More Displays !!!!!







JFO 22<sup>nd</sup> Annual Convention Chicago (Lisle) IL (April 26-30 2000) (Pictures)



ORANGE

I ALREADY HAVE  
N-27-4 BUDWEISER  
N-27-6 MICHELOB  
  
THIS COMPLETES  
MY A-B BEER NAMES

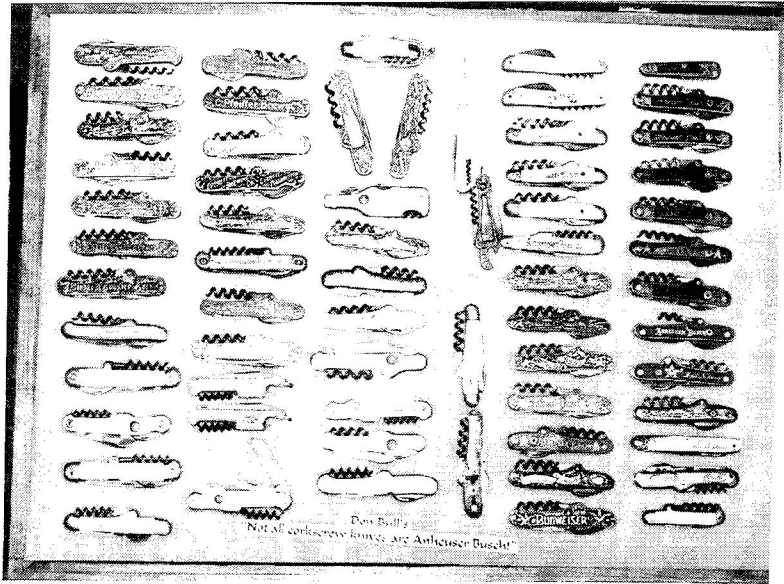
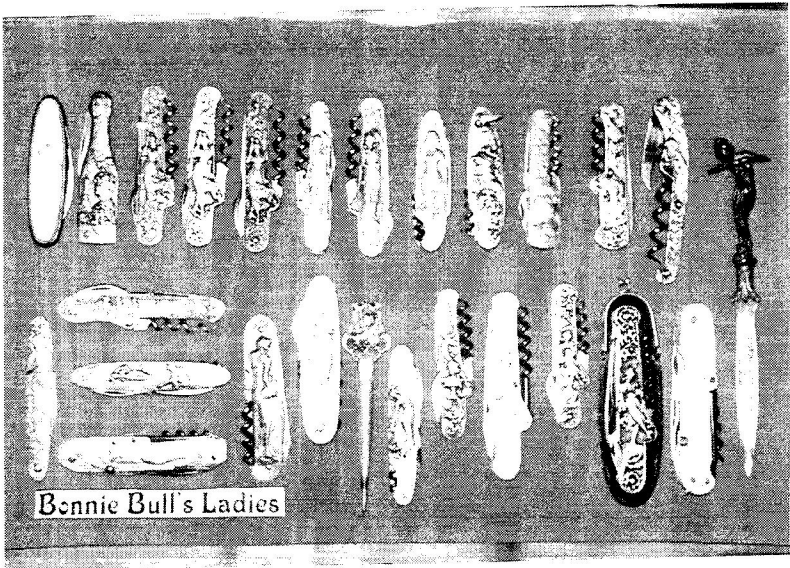
B. 11  
2  
CRANGE



FRANCK-SCHAEFER  
M-47-1

Displays and Bill McKenzie Displays

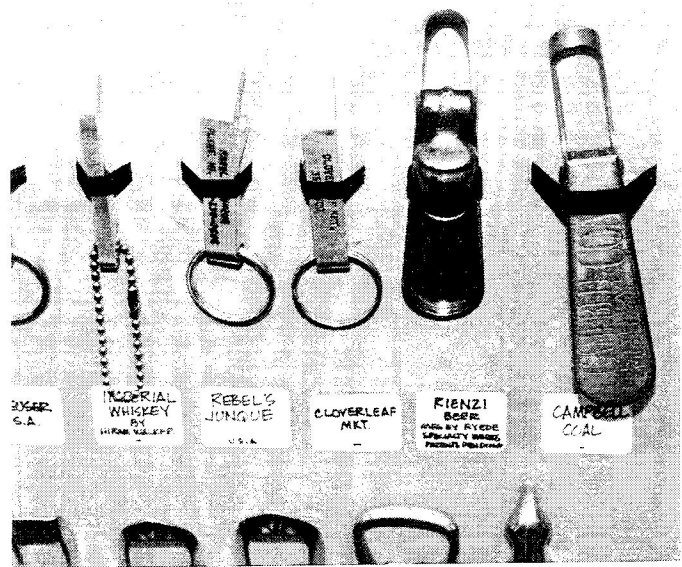
JFO 22<sup>nd</sup> Annual Convention Chicago (Lisle) IL (April 26-30 2000) (Pictures)



Last but not Least was Don Bull's fine display of Beer Knives, Unfortunately He thought the Display Contest was at 9:30 instead of 8:30. My apologies And he surely would have won one of the awards. Just buy his book on "Sharp Beer" and all will be forgiven, even better buy one of all of his Books

(Below Left) Bonnie Teggatz, Don Bull and Dick Britton admiring some of Dick's 63 Boards of Openers and Corkscrews he brought for the Saturday Show

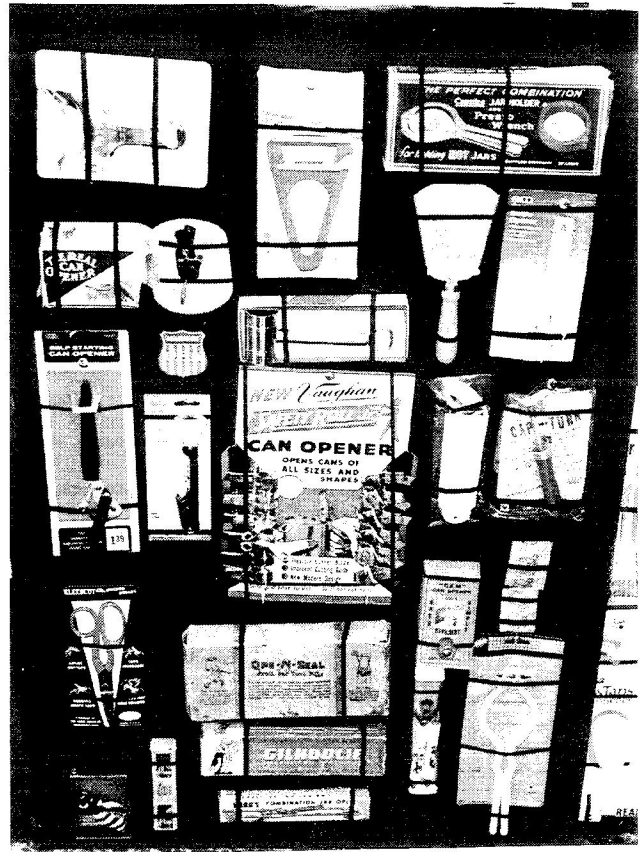
(Below Right) A close up of some of Dick's handy work and fine detailed descriptions



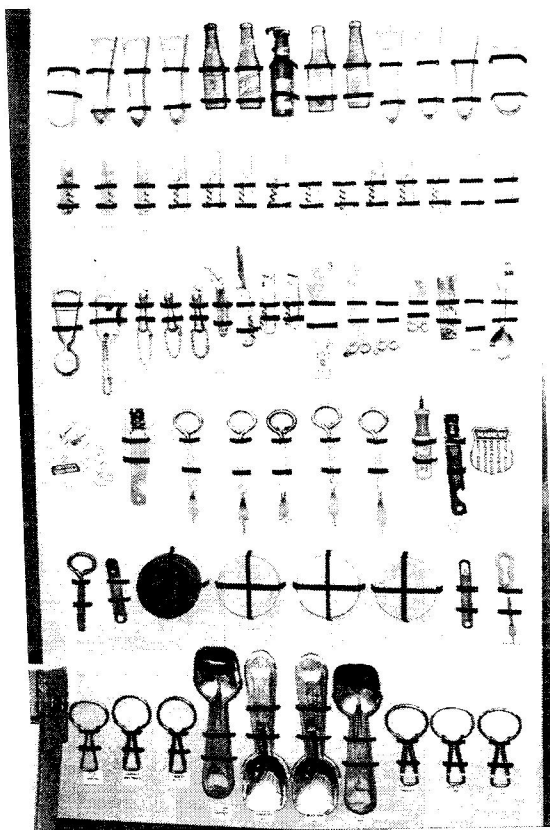
JFO 22<sup>nd</sup> Annual Convention Chicago (Lisle) IL (April 26-30 2000) (Pictures)



More of Dick Britton's Display Boards



(Below Right) Camera Shy John Bitterman and Dave Lendy at the Saturday Show



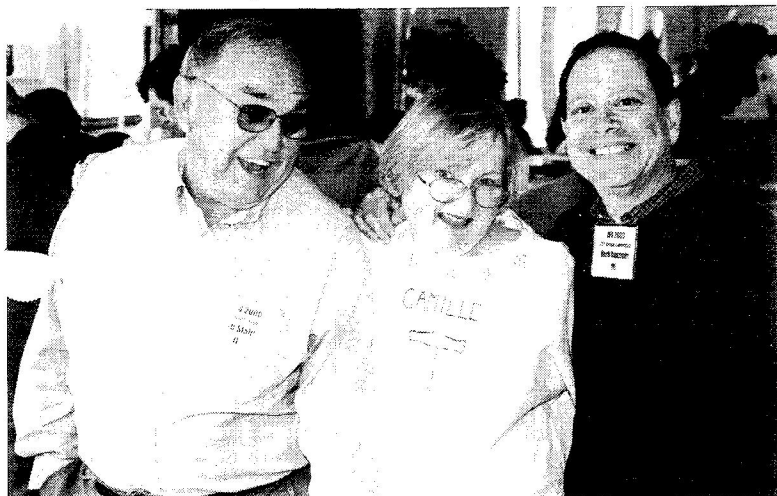
JFO 22<sup>nd</sup> Annual Convention Chicago (Lisle) IL (April 26-30 2000) (Pictures)



Saturday Show: Jim Osborn, Gary Deachman, Don Bull



and Larry Biehl



Bob Stahly, Camille & Herb Danziger



Marge & Bob (giving away "I"s) Stahly



Jackie & Robert Pommerville



Don (Los Angeles CA) Sherman

JFO 22<sup>nd</sup> Annual Convention Chicago (Lisle) IL (April 26-30 2000) (Pictures)



Mary Ann & Vic Keown manning the Table



Bob (still in shock from the auction) Post

Harriett Waldo accepting one of Camille Danziger's "Delicious" Sugar Cookies at the Show



Fran Biehl beside JoAnn Brunner



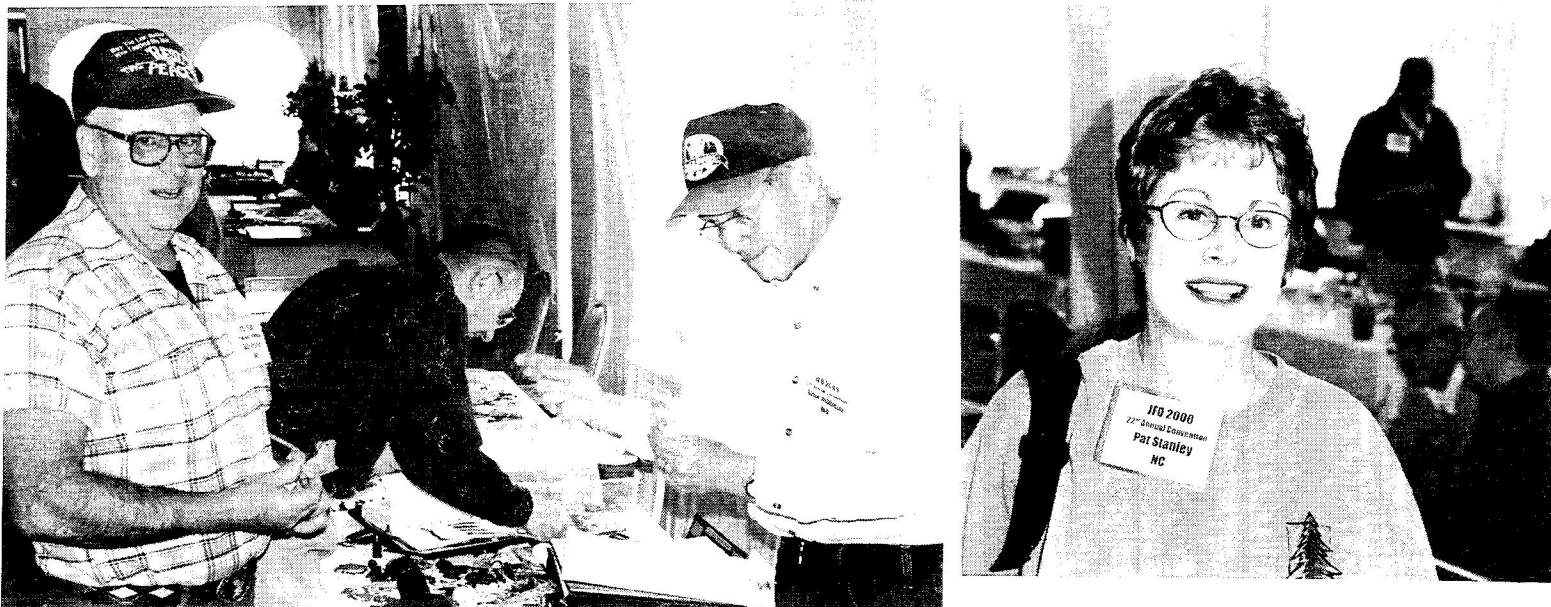
JFO 22<sup>nd</sup> Annual Convention Chicago (Lisle) IL (April 26-30 2000) (Pictures)



Going around the clock:  
 Cornelia & Ben Hoffman  
 Henry Stawarz  
 Gary Deachman & Sandra Emme  
 Conrad Schmidt (looking at Soda Book)  
 Dave & Susan Cress



JFO 22<sup>nd</sup> Annual Convention Chicago (Lisle) IL (April 26-30 2000) (Pictures)



Going Clockwise:

Bill Brunner & Ollie Hibbeler  
Trade as Harold Queen looks

“Smiling for Openers” Pat Stanley

Verne & LaVerne (Auctioneers) Vollrath

Joe Young selling to Bob Kay

Harriett Waldo waving Good-Bye





JFO 22<sup>nd</sup> Annual Convention Chicago (Lisle) IL (April 26-30 2000) (Pictures)



Scott Williams with a full Table of Openers

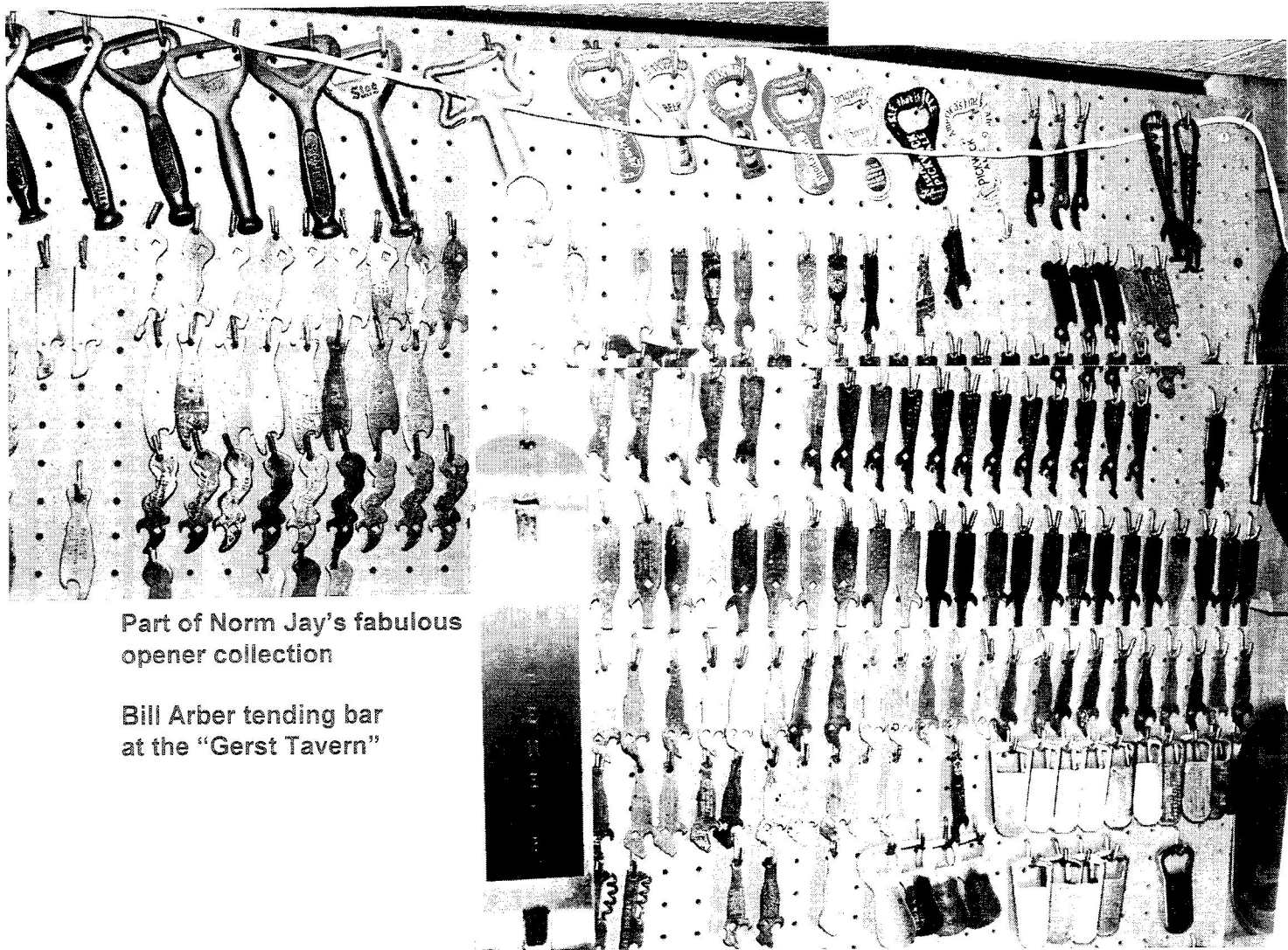
(Right) Gary Muehe one of the First Timers

Saturday Afternoon at Norm Jay's Breweriana Museum and Judy Jay's Soda Pop Museum

Sandra Emme, Tom Gormally and Bill Brunner taking it all in, you need several days to see it all



JFO 22<sup>nd</sup> Annual Convention Chicago (Lisle) IL (April 26-30 2000) (Pictures)

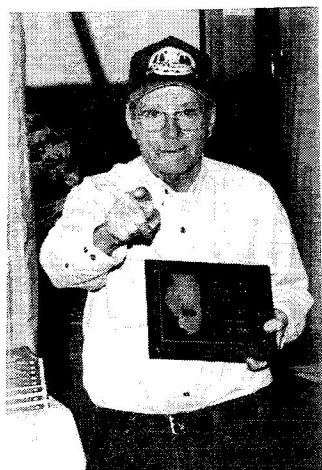
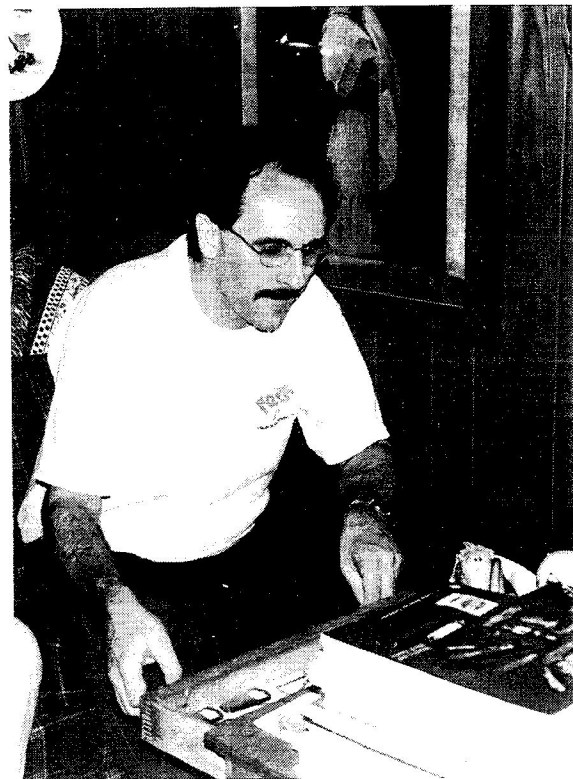


Part of Norm Jay's fabulous opener collection

Bill Arber tending bar at the "Gerst Tavern"



JFO 22<sup>nd</sup> Annual Convention Chicago (Lisle) IL (April 26-30 2000) (Pictures)



(Top Left) Phyllis & Tom Gormally on Norm's Deck

(Top Right) Pat Stambaugh checking out Judy's Openers

(Left) Ollie Hibbeler saying "Be There Next Year" in St. Joe

(Below) Roger Jarrell, Joe Young, John Stanley getting ready for "Can Openers 101 and Corkscrews 101"



AUCTION NEWS
--------------

Lynn Geyer's "Advertising Auctions". Main emphasis is on Breweriana (some openers). Cost is \$25.00. Advertising Auctions, 300 Trail Ridge, Silver City NM 88061 (505) 538-2341

Fink's Off The Wall Auctions. Main emphasis is on Breweriana (some openers). The cost is \$25.00. Finks Off The Wall Auctions, 108 E. 7th St., Lansdale PA 19446 (215) 855-9732

JFO and OTHER CLUBS ( <i>Newsletter Name in Italics &amp; All Clubs Offer an Annual Convention</i> )
------------------------------------------------------------------------------------------------------

**American Breweriana Association (ABA):** *American Breweriana Journal* (bi-monthly) on breweriana collecting. Dues \$25.00/year. Chris Galloway, Recording Secretary, P.O. Box 11157, Pueblo CO 81001

**Canadian Brewerianist:** *The Canadian Brewerianist* (bi-monthly) on Canadian Breweriana collecting. Dues \$12.00/year (US Funds). Loren Newman, 2978 Lakeview Trail, Bright's Grove, Ontario, CANADA, N0N 1C0

**Canadian Corkscrew Collectors Club (CCCC):** *The Quarterly Worme* (quarterly) on corkscrew collecting. Dues \$30.00/year. Milt Becker, PO Box 9863, Englewood NJ 07631

**The Cola Club:** *Vintage Soda* (quarterly) on all areas of antique soda advertising. Dues \$35.00/US/year, \$45/Canada/year, \$55/Foreign/year. Contact The Cola Club, PO Box 392, York PA 17405

**East Coast Breweriana Association (ECBA):** *The Keg* (quarterly) on breweriana collecting. Dues \$20.00/year. John Stanley, PO Box 64, Chapel Hill NC 27514

**MICROBES (Micro Chapter ECBA/NABA):** *The Micro Connection* (quarterly) on micro breweriana. Dues \$8.00/year. Roger Levesque, PO Box 826, South Windsor CT 06074

**Figural Bottle Opener Club (FBOC):** *The Opener* (quarterly) on cast iron openers. Color guide book: \$27.95/Non Members or \$17.00/Members. Dues \$20.00/year. Linda Fitzsimmons, 9697 Gwynn Park Dr, Ellicott City, MD, 21042

**JUST FOR OPENERS (JFO):** *Just For Openers* (quarterly) on all areas of opener collecting (with auction each issue). Dues \$20.00/year. John Stanley, PO Box 64, Chapel Hill NC 27514-0064

**National Association Breweriana Advertising (NABA):** *The Breweriana Collector* (quarterly) on breweriana collecting. Dues \$25.00/year. Robert Jaeger, 1380 W Wisconsin Ave Apt 232, Oconomowoc WI 53066

SHOWS & CONVENTIONS (Sources For Openers and Corkscrews)
----------------------------------------------------------

2000 Jul 11-16 – 28<sup>th</sup> Annual ECBA Convention – Doubletree-Somerset NJ – ECBA Members Only (Saturday Show is Public). Contact John Stanley, PO Box 64, Chapel Hill NC 27514-0064, (919) 419-1546

2000 Aug 2-6 – 29<sup>th</sup> Annual NABA Convention – Holiday Inn Select-Naperville IL – NABA Members Only (Saturday Show is Public). Contact Robert Jaeger, 1380 W Wisconsin Ave Apt 232, Oconomowoc WI 53066

2000 Sep 16 – 5<sup>th</sup> Annual K.C. Antique Bottle Collectors Show (w/ Buchanan's Flea Market). Saturday Show. Contact H. James Maxwell, 1050 W Blue Ridge Blvd, Kansas City MO 64145, (816) 942-0291 hjmesq@aol.com

2000 Oct 12-14 – 18<sup>th</sup> Annual Midwest Breweriana Show – Holiday Inn Central-Omaha NE– JFO Members welcomed. Contact Heather Hain, 15447 Allan Dr, Omaha NE 68137, (402) 896-9917 randhhain@aol.com

2001 Feb 15-18 – 22<sup>nd</sup> Annual Blue & Gray Breweriana Show – Holiday Inn Holidrome-Fredricksburg VA – All JFO Members Welcomed. Contact: John Fisher, PO Box 153, Benedict MD 20612-0153, (301) 274-3340

2001 Feb 24th – 11th Annual Mid-Missouri Mega Meet at Holiday Inn Columbia, MO. 140+ Tables of Breweriana (Saturday Only Show). Contact Bruce Mobley, PO Box 163, Macon MO 63552-0163, (660) 385-6256

2001 Apr 18-22 – 23rd Annual Just For Openers Convention –St Joe MO Ramada– All Opener / Corkscrew / Breweriana Collectors Welcomed. Contact: Don Whelan, 1200 W Maple St, Savannah MO 64485, (816)324-3603

2001 Jun 12-17 – 20<sup>th</sup> Annual ABA Convention – New Orleans LA – ABA Members Only Only (Saturday Show is Public). Contact Stan Galloway, Executive Director, P.O. Box 11157, Pueblo CO 81001

<b>WANTED (Please remember there is no charge for Ads)</b>
------------------------------------------------------------

**Adler Brau Openers in Good Condition: B-18-491, E-4-262, G-3-4, H-7-1, H-11-1, I-11-150, I-16-31, I-17-239, I-17-284, I-20-1, M-30-4 & N-83-1. Also looking for other H-7 & H-11 Opener.**

Russ Adler, W11307 Hwy V, Lodi WI 53555, (608) 592-5766, E-Mail adler@chorus.net

**Members to Swap Openers for Openers, Trade List for Trade List.** People who want to hear from other members in different parts of the country. Scott Sherman, W5268 Quarry Rd Appleton WI 54915, (414) 954-1168

**Golden Glow Openers: A-1-9, B-23-149, E-14-787, O-4-22 & A-12-12 Grace Bros.** Also any Breweriana from Rainier Brewing Co (Seattle WA, LA CA, SF CA), Golden West Brewing Co of Oakland, CA & Port Townsend Brewing Co. of Port Townsend, WA. Buy or Trade. John Cartwright, 17 Flag Way, Paso Robles CA 93446, (805) 226-9270

**Please Help Me Upgrade My Collection. How? Will trade my poor condition A-9-15 Excelsior, A-9-32 Fried and A-9-33 Rainier for your good or better ones---and \$\$\$C-A-S-H\$\$\$.**

Ed Kaye, 7077 Cedarhurst Dr, Fort Myers FL 33919, Call Collect (941) 590-3068

**Any: A-34 (Beer or Non-Beer), Beer: A-42, B-6, B-7, B-22, B-29-4, B-31, G-5. Soda Openers (Esp Dr Pepper, Coca-Cola, Nehi, Pepsi-Cola). B-9-2 Salinas & B-9-5 Mineral Springs. C-21-3 Old Timers, C-21-6 Grand Rapids, E-17s: #1 American, #7 I.S.D. Sioux City, #9 Everett, #12 Lion. H-1s: #8, 9, 12, 21, 23, 24, 26, 27, 31, 34, 35, 39, 42, 44. O-1: 1, 2, 3, 5. Write for latest trade list. John Stanley, PO Box 64, Chapel Hill NC 27514-0064, (919) 419-1546**

**A-22-1 Ballantine.** Great Trades Available. Jack Ford, 5351 Boyd Ave, Oakland CA 94618, (510) 655-5393

**A-17 "Wilber Brewery" & P-8 Corkscrew "Omaha Brewing Association" (Excellent Condition Only).** Will purchase outright. John Mlady, 1506 S 25th St, Omaha NE 68105-2611, (402) 345-7909

**A-43-Dixie & N-15 Bud Knife.** (Buying). Marc Benjamin, 167 Nixon Beach Rd, Edenton NC 27932, (919) 482-2099

**Will Trade A-64-2 Miller High Life for Opener of Equal Value. Send list of what you will trade?**

Ralph W. Pitsch, 2814 Wedemeyer St, Sheboygan WI 53081

**B-45, B-66, I-7, P-72, P-100, R-14 types with a Corkscrew (Beer/Non-Beer) and Silver Top Beer Openers.**

Herb Danziger, 550 Cherry Ct, Birmingham MI 48009-1459, (810) 646-9470

**Beverwyck-B-18-499, B-21-147, C-10-48, E-9-87, F-6-87, I-2-2, I-14-1, J-5-5a, Dobler-I-11-232, I-18-6, Fitzgerald-C-20-12, I-12-23, I-18-9, Hedrick-E-9-55, Hinckel-P-30-1, Quandt-P-8-118, P-35-2, Stanton-A-20-13, C-12-103, C-18-24, Isengart-E-8-59, Stoll-B-18-380, E-8-107, Misc-A-28-40.** Buying. Bill Laraway, 627 Kenwood Ave, Delmar NY 12054

**Bond and Lillard Openers (would like to buy). Have A-29, would like any others. Lillard is a family name.** George Love, 4301 Forest Plaza Dr, Hixson TN 37343, (423) 877-6006

**"E"s! Have Trade List (various types) to send for "E"s that I need or will buy.**

Larry Moter, 10149 Michaels Rd, Woodford VA 22580, (804) 448-3928

**E-2-19 Yuengling Por-Tor (Will trade heavy for this opener or pay cash).**

Harold Queen, 1001 Centre Ave, Jim Thorpe PA 18229, (717) 325-2612

**"E" Type Openers Wanted. Will Trade my "C", "E" and "I" Types.** Please send list of what you have and I'll send my list. Ralph Tewksbury, 84 Wildwood Dr, Parkersburg WV 26101 (304) 863-3627

**Wanted I-4s # 31 Acme, 33 Becker, 5 & 61 Burgermeister, 57 GB, 39 Lion, 54 Piels Schlitz, 42 Pilsner, 59 Silver Fox. Cash or trade.** Ben Hoffman, 213 Simmons Rd, Perkiomenville PA 18704, (610) 287-8243

**"I-5"s, "E-14"s, "B-24"s, "G-1"s. Send for Want List.** John Patton, 9224 Sugarloaf Dr, Redding CA 96001

**I-7-79 Fredricks Bros, I-7-82 Balboa, I-7-46 Berghoff, I-7-37 Schaefer, E-11-18 Arrow. Have traders.**

Tom Gormally, 100 Nelson Pl, Westfield NJ 07090, (908) 233-8867

**I-7 Beer or Non-Beer Openers. I'm interested. Extensive trade list or cash.**

Hale Milano, 506 Springhouse Road, Camp Hill PA 17011-1454, (717) 737-5067

WANTED (Continued) (Please remember there is no charge for Ads)
-----------------------------------------------------------------

**M-3s #40,23,24,25,41,26,39,33,44,36,34,42,37,6,43 Non-Beer M-3s #2,5,6,7,8,9,13,14,16,17,19,20,21,22,23,25**  
Vic Keown, 10547 Mert Ave, Saint Ann MO 63074, (314) 428-6343

**M-3s #20 Liberty, 40 Deer Park, 23 Fuhrmann & Schmidt, 25 Harrison Golden Brew, 41 Harrison Old Style, 26 Senate, 39 Hialeah, 33 Moose, 44 Osterstock, 36 Piel Bros, 34 Ruppert, 42 Seitz, 37 Sheridan, 6 Standard Erin Brew, 27 Trommers.** Don Virostek, 3746 Margate Rd, Pittsburgh PA 15221-3914, (412) 241-5894

**O-5 Openers/Send for list-Buy/Trade.Top \$\$\$.** Steve Owen, 1175 Elkins Lake, Huntsville TX 77340 (409)295-3329

**Atlas Prager Openers: A-21-46, A-21-69, B-14-73, B-14-74, B-22-101, B-24-58, B-24-103, B-25-8, B-28-2, E-5-70, E-7-1, E-8-32, E-14-755, E-14-657, E-14-719, F-4-36, H-2-166, M-23-8, N-10-6, O-8-3, P-66-4.** Will Buy or Trade.  
Dave Lendy, 1927 Allen Dr, Geneva IL 60134, (630) 208-6950

**Belmont Brewing Co., Matz, Bellaire, Reymann, Schmulbach, Benwood, Uneeda.** Would like to buy Openers from any of these Breweries. Albert Doughty, Jr., 415 N Zane Hwy, Martins Ferry OH 43935-1626

**Bottle Shaped and/or Openers with Bottle on them.** Gary Deachman, PO Box 438, North Woodstock NH 03262

**CIGAR BOX OPENERS. Will Buy or Trade.** Will trade for about anything.  
Glen Enloe, 805 Tepee Dr, Independence MO 64056, (816) 796-9965 Email enloes@juno.com

**Cigar Box Openers:** HT-5---SHM-2,6,13---DHM-13,15---RBO-1---HKH-7,9---HOR-3---RND-13---SQR-4---NL-6---BB-13,16,17,18---PKT-1,2,5,6,8,9,10---SEP-9---MIS-5,8. Ken Hoesch, PO Box 299, Zeeland MI 49464-0299

**Cigar Box Openers:** SHM-2,8,10,11,13,14 DHM-13,14,15,16 RBO-3,9,12 HOR-2,3 RND-6,8,9,10 SQR-1,4 NL-6 BB-1,6,19 BUT-2,4 PKT-1,5,6,8,9,10 SEP-2,6,7,8,9 MIS-4,6,7,10,11. Will purchase or trade from 600+ collection. (Types from the Cigar Box Opener Handbook copies available from Mike for \$3.00 which includes mailing)  
Mike Schwimmer, 325 E. Blodgett Ave., Lake Bluff IL 60044-2112, (847) 295-1901

**Hartford, Connecticut Openers Wanted esp. E-8-61 Fischer & P-17-4 Columbia.**  
Edward Johnson, 1290 Poquonock Ave, Windsor CT 06095, (860) 688-6795

**Corkscrews-Cork Pullers-Syroco (especially Golden Knight and Clown)-Early US Patents-Anything Unusual.** Pay competitive price in trade or cash. Have many corkscrews to trade. Please send description, sketch, photocopy, etc to Paul Luchsinger, 1126 Wishart Place, Hermitage PA 16148 (Tel/Fax 724-346-2331)

**Corkscrews & Tin Can Openers:** Beer Openers for Trade. Joe Young, 36 S. Weston Ave., Elgin IL (847) 695-0108

**Corkscrews, Beer Advertising Letter Openers, Beer Advertising Knives, & Postcards depicting Corkscrews.** Please send description, photo, sketch, photocopy, or tracing of what you have and advise price wanted.  
Don Bull, PO Box 596, Wirtz VA 24184, (540) 721-1128, E-Mail corkscrew@bullworks.net

**Corkscrews: Esp. Figural, Syroco, Thomason, Bakelite; also Wine Ephemera (Ads, Postcards, Labels, Grape Box Labels, Etc.); and Bakelite Anything.** Buy Straight Out. Abby Nash, 172 Bush Lane, Ithaca NY 14850

**Corkscrews: Esp. Walker's "Waiters & Hallboys" and old Williamson wire shafted "T"s with attachments to wood handle (such as brushes/wire cutters).** John Vlossak, 1044 East Eldorado St., Appleton WI 54911, (414) 739-2789

**"F" Type Beer Advertising Openers, Beer Advertising Letter Openers, Beer Advertising Match Safes and Beer Advertising Knives (with or without openers on them).** Larry Biehl, 448 Crandon, Calumet City IL 60409

**Figural Corkscrews and any WASHINGTON D.C. Openers and/or Corkscrews.**  
Sandra Emme, PO Box 1454, Upper Marlboro MD 20773, (301) 627-8207

**Openers from Jamestown Brewing Co, Kuhn's Beer, Chautauqua Brew, Monessen, PA, Independent Brewing Co, Schaefer, & all Cleveland Beers.** Ed Schaefer, 366 Bassett Rd., Bay Village OH 44140, (216) 871-0449

**Lansford, PA Advertising Items:** Openers, Spoons, Blob Bottles, Labels, Etc. Cash or Trade. Tony Zanghi, 2225 Deer Trail Rd, Coopersburg PA 18036-9069, (610) 346-8232, E-Mail anthony.zanghi@conrail.com

WANTED (Continued) (Please remember there is no charge for Ads)
-----------------------------------------------------------------

**Lexington Brewery (Dixie Beer) & Coca-Cola Openers.** Want to buy any figurals or unusual older examples of these. Also looking for old manufacturer's brochures or catalogs (originals or copies of).  
Thom Thompson, 123 Shaw Ave., Versailles KY 40383, (606) 873-8787

**"M-1 & M-2" Lithographed Openers (Excellent Condition Only) by beginning collector. Also Openers or Other Related Items to any Jung Breweries.** Paul Jung, PO Box 425, Bechtelsville PA 19505, (610) 367-0239

**Minnesota Openers: Any St. Cloud, Red Wing or Rochester MN. Also A-30-7 Premier, B-24-77 Fitgers, L-4-27 Schmidt, L-4-67 Schmidt, M-2-15 Rex (Fitgers), N-8-1 Schuster, N-43-2 Bub, N-74-1 Hamms.**  
Pat Stambaugh, 718 S Lakeshore Dr, Lake City MN 55401

**Montana & Idaho Beer/Brewery Openers & other Breweriana. Also looking for H-8 & L-1 Openers to complete collection.** Steve Armstrong, PO Box 741, Kamiah ID 83536, E-Mail sunset@cybrquest.com

**Montana Openers-Corkscrews:** I need 39 of the 211 in the JFO Handbook. A-17-43,A-21-84,A-43-5,A-45-1,A-45-2---B-5-29,B-18-370,B-18-479,B-18-481,B-18-331,B-18-538,B-21-471,B-21-142,B-21-488,B-21-522,B-22-112,B-52-5---E-1-52,E-2-29,E-4-325,E-9-29,E-13-29,E-23-3---F-8-9---M-29-63---N-38-4---P-7-41,P-8-160,P-8-56,P-17-11,P-18-3,P-18-6,P-31-9,P-62-2,P-66-6,P-83-1. Will trade generously (am breaking up my type collection & have plenty of trade bait) or purchase any of the above. Also interested in any Montana advertising openers (non-Beer). Bill Pattie, 37050 SE 89th St., Snoqualmie WA 98065, (206) 888-2496

**Nebraska Openers esp: "A"s, "B"s, Omaha, West Point, Grand Island, Crete, Columbus.** New Collector Top Prices Paid. Tim Payne, 5144 Walker Ave, Lincoln NE 68504, (402) 466-6592, E-Mail house-of-payne@webbtv.net

**New York State Openers: E-4-4 American, E-4-345 Koch, E-14-312 Amsterdam, G-1-67 Hupfel.**  
Will Buy or Trade. Mark Barren, 6141 Tachi Dr., Newfane NY 14108-9517, (716) 778-9724

**Orange Crush Openers Wanted: Will Buy or Trade if I have anything you may need. Thanks.**  
Paul Gauvin, 24 Strawberry Ln, Manchester CT 06040, (860) 646-9722, E-Mail mtkneo@aol.com

**P-1-2 Anheuser-Busch Corkscrew & \$75 for P-1-10 Highland or P-1-15 Schnaiders or P-1-16 Schoenhofen or P-88-2 Burton or P-88-3 National or P-88-4 Yonkers.** Ollie Hibbeler, 298 Highline Road, Lake Ozark MO 65049  
Also would like to trade for or purchase Q-12 Openers: #2 Bud Light, #5 Busch Gardens, #7 Busch, #24 La Beer, #33 Busch Light Draft Beer, #34 Bud Dry Draft, #35 Budweiser, #41 Bud Light Beer, #42 Budweiser.

**Help!!! need only 10 of 45 known Spokane, Washington Openers to complete collection: B-6-9 Spokane, B-13-61 Bohemian Club, B-14-109 Spokane, E-3-58 Bohemian Club, E-6-137 Golden Age, E-7-6 Gilt Top, E-14-475 Bohemian Club, N-44-1 Inland & P-19-16 New York. Will trade heavy or pay your price.**  
Nick Johnson, 4708 Spiser Ln, Wichita Falls TX 76302, (940) 322-1696

**West Virginia Openers (B-7-12, B-18-110, and H-4-3), also Southern US Beer openers and corkscrews.**  
Roger Jarrell, 1500 Sedwick Rd., Durham NC 27713, (919) 544-7787

"Beer Advertising: Knives, Letter Openers, Ice Picks, Cigar Cutters and More" by Donald A. Bull
-------------------------------------------------------------------------------------------------

*Beer Advertising: Knives, Letter Openers, Ice Picks, Cigar Cutters and More* by Donald A. Bull features:

176 (8 1/2" x 11") pages  
Softcover  
520 Color Photographs  
Price Guide

Price \$25.00. Order from Bullworks, P. O. Box 596, Wirtz, VA 24184, USA

This book gets right to the point. In over 500 photographs Donald Bull looks at the many types of beer advertising objects which are pointed or sharp. Knives, letter openers, and ice picks readily come to mind when one thinks of sharp objects with beer advertising. In his view of the subject, Bull goes much further and includes cigar cutters, scissors, writing instruments, ice scrapers, forks, ice tongs, box cutters, screw drivers, nail clip-pers, toothpicks, and can openers. The reader will even find fishing lures, sewing kits, combs, and golf tees. While the reader is enjoying the glorious photographs of the many treasures, he will find the book is peppered with Beerbits, Bizbits, and Bullbits to inform and entertain him. He'll learn about the breweries and brands ad-vertised, the makers of the objects, and share many of Bull's own insights. A brewery / brand index and a manu-facturers' index are included for easy reference.



<b>SELLING (Please remember there is no charge for Ads)</b>
-------------------------------------------------------------

**Openers & Breweriana for Sale: Types (Beer & Non-Beer) "B", "C", "D", "E", "F", "I", "R", Cigar Cutters, Beer Taps, Beer Trays, Ice Picks, Wine Openers, Jar Wrenches, Beer Steins, Novelty Wood & Brass Openers.** Bette Peters, 1425 NW Ponderosa, Grants Pass OR 97526 sheryl@tcdsnet.net

**Starr X (Type O-5) Wall Mounts**, Selling Warehouse Collection, Send SASE for List, Clayton Denny, 630 Nottingham Dr, Hampton VA 23669-1618, (757) 851-4258

**Beer and Soda Openers For Sale. Send SASE for List.** John Fisher, PO Box 153, Benedict MD 20612-0153

**"American Breweries II":** by Dale Van Wieren. Over 18,000 entries for nearly 8,000 brewing firms, tracing names, addresses, and dates of operation. (\$18 Priority Mail). John Stanley, PO Box 64, Chapel Hill NC 27514

**2000 Handbook of United States Beer Advertising Openers and Corkscrews (contains 13,000 Listings & Pictures for 2000 New Discoveries) . \$13 sent priority mail.** John Stanley, PO Box 64, Chapel Hill NC 27514

**"Just For Openers" "A Guide to Beer, Soda, & Other Openers" by Donald A. Bull & John R. Stanley, 160 Pages, 380 Color Pictures, \$25.00 plus \$3.20 shipping (US Only).** Bullworks, PO Box 596, Wirtz VA 24184

**"Soda Advertising Openers" by Donald A. Bull & John R. Stanley, 160 Pages, Over 275 Color Pictures & 2500 Listings, \$25.00 plus \$3.20 shipping (US Only).** Bullworks, PO Box 596, Wirtz VA 24184

**"Beer Advertising: Knives, Letter Openers, Ice Picks, Cigar Cutters and More" by Donald A. Bull, 180 Pages, Over 500 Color Pictures, \$25.00 plus \$4.30 shipping (US Only).** Bullworks, PO Box 596, Wirtz VA 24184

**"The Ultimate Corkscrew Book" by Donald A. Bull, Hardcover Book Weighs 5 Lbs, 744 Color Photographs, 3746 Corkscrews with Values, \$75.00 plus \$8.50 shipping (US Only).** Bullworks, PO Box 596, Wirtz VA 24184

**"Bull's Pocket Guide to Corkscrews" by Donald A. Bull, 190 Pages, Over 200 Color Photographs, 942 Corkscrews with Values, \$18.00 plus \$3.20 shipping (US Only).** Bullworks, PO Box 596, Wirtz VA 24184

**"Hometown Beer - A History of Kansas City's Breweries" by H James Maxwell & Bob Sullivan Jr, Hardcover Book with 300 Pages, 585 Pictures (352 in Color) and Illustrations, \$50.00 Postpaid in US.** H. James Maxwell, 1050 West Blue Ridge Blvd, Kansas City MO 64145-1216

<b>Newsletter Content and Deadlines for Sending in Articles and Receiving Newsletter</b>				
	<b>January Issue</b>	<b>April Issue</b>	<b>July Issue</b>	<b>October Issue</b>
<b>Newsletter Content</b>	<b>New Additions to Handbook</b>	<b>Membership Directory</b>	<b>Convention Highlights</b>	<b>New Discoveries</b>
<b>Articles</b>	<b>December 1st</b>	<b>March 1st</b>	<b>June 1st</b>	<b>September 1st</b>
<b>Receiving</b>	<b>January 31st</b>	<b>April 30th</b>	<b>July 31st</b>	<b>October 31st</b>

<b>Newsletter Content and Deadlines for Sending in Articles and Receiving Newsletter</b>				
	<b>January Issue</b>	<b>April Issue</b>	<b>July Issue</b>	<b>October Issue</b>
<b>Newsletter Content</b>	<b>New Additions to Handbook</b>	<b>Membership Directory</b>	<b>Convention Highlights</b>	<b>New Discoveries</b>
<b>Articles</b>	<b>December 1st</b>	<b>March 1st</b>	<b>June 1st</b>	<b>September 1st</b>
<b>Receiving</b>	<b>January 31st</b>	<b>April 30th</b>	<b>July 31st</b>	<b>October 31st</b>

<b>Just For Openers "Auction Guidelines"</b>
----------------------------------------------

**Please Note: Fee of 15% Will Be Charged on Consignments**

This auction is a service to members of JFO. Submit consignments by sending a graded inventory list. Reasonable minimum bids can be established for good items. Any openers submitted for the auction should have a minimum value of \$1.00. Money realized will be sent 4 to 5 weeks of the closing date.

**Please Write First Before Sending Consignment Material.**

**When Bidding Please! give the Lot Number and a Short Description with each bid.**

**Please remember to at least sign your name on each auction page and keep a copy.**

**Please, Please, Please SEND IN YOUR BID SHEETS EARLY & NOT AT THE LAST MINUTE**



Results of April 2000 JFO Auction Closing May 17, 2000

1	A-001-052	JAMAICA	6	26.00
2	A-001-999	BAKER'S BEV (Tie)	6	15.00
3	A-003-041	BELOIT MALT (Tie)	4	15.00
4	A-004-022	FALLS CITY	6	20.00
5	A-005-036	MAIN MALT	8	35.00
6	A-007-003	FRONTENAC	6	9.65
7	A-012-006	WHITE LABEL	4	15.00
8	A-012-010	BECKERS	6	25.05
9	A-013-999	PURITAN METAL POLISH	4	25.52
10	A-013-999	MCGREAL BROS	8	28.52
11	A-015-013	TERRE HAUTE	6	25.00
12	A-015-026	SOUTH BEND	6	31.83
13	A-017-012	KAMM & SCHELLINGER	6	31.83
14	A-017-999	CAFÉ LA RIVIERE	4	14.00
15	A-018-999	SEAFOOD GROTTO	6	20.02
16	A-020-999	NEW NATIONAL HOTEL	6	18.50
17	A-021-035	WEST VIRGINIA	8	25.30
18	A-021-999	CENTRAL TAVERN	4	10.30
19	A-021-999	DIXIE WHEEL	6	15.30
20	A-028-002	CONSUMERS PRODUCTS	4	14.00
21	A-028-003	DEPPEN	4	21.55
22	A-035-999	DERBY BAR	4	5.76
23	A-035-999	GAY-OLA	4	16.00
24	A-045-999	OPTIMO CLUB	4	25.00
25	B-007-005	HEURICH	6	30.25
26	B-013-121	STRONG MALT	8	16.00
27	B-014-029	HOOSIER	6	12.00
28	B-014-030	K. & S.	6	12.50
29	B-014-033	MANITOWOC PRODUCTS	4	12.50
30	B-014-041	SCHMIDT	6	12.50
31	B-014-100	MANITOWOC PRODUCTS	6	12.50
32	B-015-016	>A-R-R-O-W->	6	25.00
33	B-015-UL	EMRAL	6	30.00
34	B-018-045	MANITOWOC PRODUCTS	4	12.50
35	B-018-284	KAMM & SCHELLINGER	6	12.50
36	B-018-UL	CROWN	6	20.00
37	B-019-062	DICK BROS	8	19.00
38	B-019-098	MUESSEL (Tie)	6	13.00
39	B-019-221	MUESSEL (Tie)	6	13.00
40	B-021-005	BARTHOLOMAY	4	20.00
41	B-021-041	INDIANAPOLIS	6	14.00
42	B-021-076	SCHLITZ	4	12.00
43	B-021-168	INDIAN	6	35.11
44	B-021-172	KITTANNING	4	12.50
45	B-021-276	LOS ANGELES	4	22.00
46	B-021-283	MUESSEL	4	12.50
47	B-021-513	BERKSHIRE	6	20.00
48	B-021-565	BURKHARDT	2	20.00
49	B-021-999	PRESTO BOTTLE OPENER	4	11.00
50	B-022-004	FALSTAFF	6	12.00
51	B-022-999	VANCOUVER BREW	4	21.00
52	B-022-999	DIAMOND GINGER BEER	6	10.50
53	B-023-045	BLUE RIBBON MALT	4	8.00
54	B-023-999	SPARK-LIN-ALE	6	15.00
55	B-023-999	CAVALIER (Tie)	8	7.00
56	B-023-999	TORAH	6	9.00

57	B-023-999	CONEY ISLAND	8	8.76
58	B-023-999	RED WING MILLING	6	26.10
59	B-024-033	SCHMIDT VAR (A)	4	10.50
60	B-024-999	MORNING GLORY	6	6.52
61	B-032-001	>A-R-R-O-W->	6	85.50
62	B-040-999	PEPSI-COLA	6	16.77
63	B-042-999	KEY-STONE SPRING	6	13.00
64	B-053-999	FORT DODGE BOT	6	35.11
65	C-005-002	PABST	6	10.00
66	C-006-001	BLACK BASS	6	7.50
67	C-006-002	FALLS CITY	4	4.65
68	C-006-004	PABST	4	10.00
69	C-007-001	UTICA-CLUB	4	1.22
70	C-009-001	ACME	6	7.00
71	C-009-003	BLATZ	10	11.65
72	C-009-004	BRUCKMANN CO	4	15.00
73	C-009-007	STORZ	4	1.01
74	C-009-012	VALLEY FORGE	4	6.00
75	C-009-031	VALLEY FORGE	4	6.00
76	C-010-002	AMERICAN	4	4.65
77	C-010-003	AMERICAN	4	6.00
78	C-010-004	BEVERWYCK	8	6.85
79	C-010-012	KOERBER	4	18.00
80	C-010-013	MANZ	6	16.11
81	C-010-016	PHOENIX	4	6.00
82	C-010-018	PIELS	6	5.15
83	C-010-024	A-B-C	6	6.00
84	C-010-028	MILLER	8	6.75
85	C-010-046	WAYNE	6	6.95
86	C-011-002	INDEPENDENT	8	7.85
87	C-011-007	SCHOENLING	8	12.00
88	C-011-004	BLATZ	4	6.00
89	C-011-006	FALSTAFF	8	6.75
90	C-011-009	INDEPENDENT	4	6.00
91	C-011-020	KAMM & SCHELLINGER	4	6.00
92	C-012-999	SPUR COLA	6	4.11
93	C-013-002	BARTELS	4	4.15
94	C-013-007	BREIDTS	2	6.00
95	C-013-009	BRUCKS	4	26.00
96	C-013-019	DETROIT	6	4.65
97	C-013-021	DOBLER	6	2.55
98	C-013-022	DOBLER	6	6.00
99	C-013-023	DUBOIS	4	6.00
100	C-013-025	DUQUESNE	4	6.00
101	C-013-027	EBLING	4	4.15
102	C-013-030	F & S	6	4.65
103	C-013-031	FUHRMANN & SCHMIDT	6	6.00
104	C-013-032	FALLS CITY	4	4.15
105	C-013-033	FALLS CITY	6	4.65
106	C-013-036	FEIGENSPAN	4	4.15
107	C-013-037	FITZGERALD BROS	8	12.00
108	C-013-038	FITZGERALDS	6	5.25
109	C-013-041	FORT PITT	4	1.03
110	C-013-042	FORT PITT	6	4.15
111	C-013-047	GENESEE	6	4.95
112	C-013-048	GERMAN	6	6.50
113	C-013-052	GOLDEN GLOW	4	6.50
114	C-013-054	GRAUPNERS	6	5.50
115	C-013-056	HAMMS	6	6.50
116	C-013-057	HANLEY	8	6.75
117	C-013-060	IRON CITY	2	0.00
118	C-013-061	JONES	6	4.25

119	C-013-062	K-B	6	4.15
120	C-013-066	KRUEGER	6	2.15
121	C-013-071	MILLER	4	0.00
122	C-013-073	MUESSEL	4	6.00
123	C-013-074	NATIONAL	10	8.00
124	C-013-076	NORTH AMERICAN	2	2.65
125	C-013-079	ORTLIEB	6	7.00
126	C-013-080	PABST	8	5.00
127	C-013-091	RUPPERT	6	4.15
128	C-013-093	RUPPERT	4	6.00
129	C-013-096	SCHLITZ	4	4.15
130	C-013-097	SCHMIDT	6	4.75
131	C-013-098	SCHMIDT	6	8.00
132	C-013-101	SCHMIDT	4	7.00
133	C-013-106	STANDARD	6	7.00
134	C-013-107	STANDARD	4	4.15
135	C-013-109	STANTON	4	0.00
136	C-013-110	STERLING	8	6.75
137	C-013-111	SOUTH BETHLEHEM	6	8.00
138	C-013-112	TERRE HAUTE	4	4.15
139	C-013-122	AMSTERDAM (MIN \$25)	6	0.00
140	C-013-131	FORT PITT	4	4.15
141	C-013-132	GEM	6	16.05
142	C-013-140	IRON CITY	4	6.00
143	C-013-150	RHEINGOLD	4	6.00
144	C-013-166	CARLING	4	4.15
145	C-013-190	SCHAEFER	6	6.00
146	C-013-201	BIRK BROS	4	10.50
147	C-013-203	CHARTIERS VALLEY	4	6.00
148	C-013-206	COOK	1	2.00
149	C-013-207	COORS	6	6.00
150	C-013-208	COORS LIGHT	8	6.00
151	C-013-252	CONSUMERS	4	10.00
152	C-013-260	DUTCH MAID	4	6.00
153	C-014-001	BUCKEYE	4	5.03
154	C-014-003	FORT PITT	6	6.00
155	C-014-005	HORLACHER	6	6.00
156	C-014-006	JONES	6	10.00
157	C-014-007	MANZ	1	1.15
158	C-014-011	RHEINGOLD (VAR A)	6	6.00
159	C-014-011	RHEINGOLD (VAR B)	4	0.00
160	C-014-012	RHEINGOLD	6	6.00
161	C-014-013	ROCHESTER	4	6.00
162	C-014-016	RUPPERT	4	4.15
163	C-014-018	SIMON PURE	4	4.15
164	C-014-025	RUPPERT	6	6.00
165	C-014-027	BURKHARDT	4	6.00
166	C-014-032	BURKHARDT	6	6.00
167	C-014-035	OLDE VIRGINIA	2	4.00



Interested in all Storz Items  
SIGNS\* CANS\* BOTTLES\* NEONS

Results of April 2000 JFO Auction Closing May 17, 2000

168	C-015-001	CAMDEN	8	6.75
169	C-015-002	FORT PITT	6	4.15
170	C-015-003	GENESEE	6	6.95
171	C-015-004	HARVARD	6	10.00
172	C-015-005	IRON	4	3.25
173	C-015-006	IROQUOIS	6	10.00
174	C-015-007	PIELS	4	6.00
175	C-015-009	RUPPERT	2	6.00
176	C-015-010	SCHAEFER	6	1.15
177	C-015-012	VALLEY FORGE	4	6.00
178	C-015-013	RHEINGOLD	6	6.00
179	C-015-016	RHEINGOLD	4	6.00
180	C-016-002	IROQUOIS	4	12.00
181	C-016-006	RHEINGOLD	4	4.15
182	C-016-007	ROLLING ROCK	4	4.15
183	C-016-009	SCHAEFER	4	2.01
184	C-016-010	SCHAEFER	6	4.15
185	C-016-011	SCHOENLING	6	6.95
186	C-016-016	VALLEY FORGE	6	6.00
187	C-017-001	ARROW	6	5.95
188	C-017-003	DAWSON	4	4.15
189	C-017-004	EHRET	6	6.95
190	C-017-005	FOX DE LUXE	8	6.95
191	C-017-006	GRETZ	4	6.00
192	C-017-007	HABERLE	6	5.95
193	C-017-008	HANLEY	4	6.00
194	C-017-010	HUDEPOHL	2	2.00
195	C-017-011	IROQUOIS	6	4.15
196	C-017-013	LEBANON VALLEY	2	1.15
197	C-017-016	MONARCH	4	6.00
198	C-017-020	PABST (SHORT BOTTLE)	6	10.00
199	C-017-021	PABST (TALL BOTTLE)	8	10.00
200	C-017-022	PHOENIX	6	8.95
201	C-017-024	PRIOR	6	7.95
202	C-017-026	SCHAEFER	6	6.52
203	C-017-028	SCHOENLING	6	10.00
204	C-017-030	VALLEY FORGE	4	4.15
205	C-017-031	WAYNE	4	4.15
206	C-017-034	DAWSON	4	4.15
207	C-017-036	HOME	4	6.00
208	C-017-038	MOOSE	6	11.95
209	C-017-045	FLOCK	6	9.95
210	C-017-052	ROCHESTER	6	10.00
211	C-017-066	ATLAS	4	4.15
212	C-018-002	ESSLINGER	6	6.00
213	C-019-002	FORT PITT	6	6.95
214	C-018-004	INDEPENDENT	8	3.15
215	C-018-005	IROQUOIS	6	2.15
216	C-018-008	R & H	6	8.11
217	C-018-009	ROLLING ROCK	8	6.95
218	C-018-010	SIMON	4	5.00
219	C-018-015	FORT SCHUYLER	8	7.00
220	C-018-017	TROMMER	8	9.04
221	C-019-001	CREMO	4	6.00
222	C-019-002	FORT PITT	6	6.00
223	C-019-003	GRETZ	6	14.00
224	C-019-005	HUDEPOHL	4	4.65
225	C-019-006	INDEPENDENT	6	4.65
226	C-019-007	ROCHESTER	6	5.95
227	C-019-011	FORT PITT	4	20.00

228	C-020-004	KAIERS	6	6.00
229	C-020-005	LEBANON VALLEY	6	6.00
230	C-020-007	NEUWEILER	4	6.00
231	C-020-021	PETER	6	6.95
232	C-020-025	ELIZABETH	1	1.00
233	C-024-001	HOFFMAN	6	7.65
234	C-032-001	RAINIER	6	26.00
235	C-032-002	TACOMA	4	12.53
236	C-036-999	MOLSON	4	3.30
237	D-005-002	BLATZ	6	0.00
238	D-006-001	BRUCKS	6	6.85
239	D-002-006	SCHLITZ	6	4.65
240	D-009-004	KINGSBURY	6	3.15
241	D-012-003	NEWMAN	4	4.65
242	D-012-999	HUAG-BUSH	4	6.00
243	E-001-011	MOUNT CARBON	4	6.00
244	E-002-010	SCHIEDT	8	11.05
245	E-002-016	PRIMO	4	6.50
246	E-002-999	KIRSCH & CO	4	4.10
247	E-003-005	FISHER	8	4.95
248	E-003-011	HOOSIER	6	13.05
249	E-003-017	SIOUX CITY	6	13.05
250	E-003-020	STANDARD	4	2.15
251	E-004-005	ARROW	2	4.10
252	E-004-009	ATLAS	6	6.50
253	E-004-021	CENTLIVRE	4	4.10
254	E-004-040	GOLDEN WEST	6	7.00
255	E-004-047	HUDEPOHL	2	5.25
256	E-004-053	LANG	6	6.75
257	E-004-055	LION	4	7.00
258	E-004-057	MANHATTAN	6	0.00
259	E-004-075	ROCHESTER	2	0.00
260	E-004-127	MUESSEL	6	8.95
261	E-004-132	PRIMA	6	6.00
262	E-004-199	TROMMER	4	2.10
263	E-004-257	SOUTH BEND	6	22.49
264	E-004-358	ROYAL PRODUCTS	4	7.78
265	E-004-999	DOUBLE EAGLE	6	14.99
266	E-004-UL	SCHNEIDER	6	14.99
267	E-005-UL	FALSTAFF	8	25.00
268	E-006-025	FORT SCHUYLER	6	8.05
269	E-006-151	STAR	6	15.95
270	E-007-007	GOETZ	6	6.50
271	E-007-010	PRIMA	4	6.50
272	E-007-UL	CONSUMERS	4	25.00
273	E-009-037	KRANTZ	4	10.00
274	E-011-013	STEGMAIER	6	5.45
275	E-013-005	ENTERPRISE	2	4.10
276	E-014-005	ACME	6	5.25
277	E-014-022	BILLINGS	6	12.25
278	E-014-086	FESENMEIER	6	5.95
279	E-014-167	KOCH	6	5.00
280	E-014-170	KRUEGER	6	5.00
281	E-014-285	TOPPER	10	8.00
282	E-014-296	WAUSAU	6	13.05
283	E-014-307	YUENGLING & SON	4	2.15
284	E-014-351	DREWRY'S	6	7.05
285	E-014-384	HOOSIER	2	5.10
286	E-014-456	WAUSAU	6	12.05
287	E-014-515	KAMMS	6	7.00
288	E-014-574	WEHLE	4	7.53

289	E-014-614	HORNELL	6	7.25
290	E-014-629	MUESSEL	6	22.88
291	E-014-999	SEVEN-UP	8	1.00
292	E-014-999	SIMPSON SPRING	6	5.11
293	G-001-008	EBLING	2	0.00
294	G-001-016	LATROBE	2	3.00
295	G-001-021	PABST	8	6.00
296	G-002-009	HUDEPOHL	8	6.00
297	G-003-003	HAMMS	6	7.00
298	H-002-004	BERGHOFF	6	1.51
299	H-002-099	BUDWEISER	6	15.10
300	H-005-011	FLOCK	6	2.65
301	I-007-011	CROFT	8	16.85
302	I-007-014	FEIGENSPAN	4	2.23
303	I-007-017	GENESEE	4	1.00
304	I-007-023	KINGS	6	15.85
305	I-007-027	NARRAGANSETT	4	7.50
306	I-007-036	RUPPERT	6	1.51
307	I-007-055	OLD DUTCH	4	21.03
308	I-007-999	UNITED CO-OPERATIVE	6	6.50
309	I-007-999	KEMPS TOMATO JUICE	6	8.50
310	I-017-144	WAUSAU	6	6.25
311	I-019-LOT	#15 BLATZ #18 GOETZ #9 PABST	6	6.85
312	I-020-LOT	#6 HAMMS #17 HAMMS #8 STORZ	6	1.65
313	J-007-001	BEER CANS KEGLINED	6	10.77
314	J-009-001	COORS	6	4.65
315	L-004-021	SCHLITZ	4	5.65
316	M-001-025	HAFENREFFER & CO	8	18.25
317	M-009-001	BALLANTINE	10	10.75
318	M-029-007	STERLING	6	4.10
319	N-009-035	HUSTINGS BEV	10	10.75
320	O-004-024	SCHAEFER	6	27.00
321	O-004-999	MISSION BEV	8	25.50
322	P-019-999	BRIAR CAVE WHISKEY	2	10.00

Thanks to all  
42 Bidders

## STORZ BEER COLLECTOR

Tim L. Payne  
5144 Walker #1  
Lincoln, NE 68504  
(402) 466-6592

July 2000 JFO Auction-Closing August 16, 2000- Name & Mem #:
--------------------------------------------------------------

**Send Bids To: John Stanley, PO Box 64, Chapel Hill, NC 27514**

**Auction Rules (Note: No Phone Bidding)**

- 1) \$1.00 Minimum Bid on Each Lot, Only 1 Bid for each Lot Allowed
- 2) Openers Sold to Highest Bidder, For Identical Bids Earliest Postmarked Bid Wins
- 3) 7 Days to Return Openers If Not Satisfied, Shipping and Handling Extra
- 4) Openers Shipped Upon Payment (Please Pay within 7 days of Receiving Invoice)
- 5) Results Shown Next JFO Issue (Winning Bidders Receive Copy with Invoice)

**Grading (G): 1-Poor, 2-Fair, 4-Good, 6-Very Good, 8-Excellent, 10-Near Mint-Mint  
(UL-Unlisted in 2000 Handbook, 999 Non-USA-Beer)**

JFO # & Description from 2000 Handbook Of United States Beer Advertising Openers and Corkscrews

#	JFO #	Description	ST	G	BID
1	A-001-008	GLOBE BREWING CO. SAN FRANCISCO PHONE SU-0120	CA	4	
2	A-001-016	MONTANA BREWING CO. "MY FAVORITE"	MT	6	
3	A-001-999	DRINK QUAKO 5C		8	
4	A-007-999	RETURN KEYS TO CIMINO'S STORE GET REWARD		6	
5	A-012-999	DRINK JAMAICA DRY	WI	2	
6	A-013-999	BOOST THE CLEVELAND AUTOMOBILE CLUB AND BETTER ROADS	OH	4	
7	A-013-999	CENTRAL GARAGE 617 SHIPLEY ST. WILMINGTON, DEL.	DE	4	
8	A-013-999	COMPLIMENTS OF WALTER KUGLER, RAPIDS BUFFET WINES-LIQUORS-CIGARS.		4	
9	A-015-999	(BLANK NO AD)	IL	6	
10	A-020-999	ADVERTISING SPECIALTIES THRU CHICAGO OFFICE J.L. SOMMER MFG. CO. 604 HEARST BLDG. / C.J. KAUFMANN 2415 NO. 18TH ST. MILWAUKEE, WIS.	WI	6	
11	A-021-999	"GIVE US A WHIRL" K-MUSIC CO. ALLENTOWN, PA PHONE 4-5941	PA	6	
12	A-021-999	BITZEL SALES BETTER USED CARS E. TUSC. CANTON, O.	OH	6	
13	A-021-999	DON'T GAMBLE, TRADE WITH LEON KIMMEL MCHRY, CO. INC. GREENVILLE, S.C.	SC	8	
14	A-021-999	EAT, DRINK, DANCE, SWIM CATALPA GARDENS DAYTON, OHIO	OH	6	
15	A-021-999	POOL HALL SPTG. GOODS BEER WEST POINT, IA.	IA	6	
16	A-021-999	PRESIDENT TAP ROOM TOPEKA, KANSAS	KA	8	
17	A-021-999	WHITE'S TAVERN LIQUORS-BEER FINE WINES ICE CREAM-POP GLEN HAVEN, WIS.	WI	8	
18	A-028-999	BLUE LABEL BOTTLING WORKS GENEVA, N.Y.	NY	8	
19	A-028-999	ED. LAMBERT'S, CLARINDA, CIGARS, KING KOKO, SAN PURO 5 & 10 CENTS WE WANT YOUR TRADE.		8	
20	A-028-999	REC-OLA / RECKER SYRUP & BOTTLING WORKS, VINCENNES, IND.	IN	6	
21	A-028-999	SCHUSTER'S ROOT BEER AND GINGER ALE CLEVELAND, OHIO	OH	8	
22	A-028-999	T. J. RATTIGAN BOTTLER BORDENTOWN, N.J.	NJ	4	
23	A-028-999	WAKEFIELD BOTTLING CO. G. D'AGATA, PROP. 96 WATER ST. WAKEFIELD, MASS. TEL. CRYSTAL 51476	MA	8	
24	A-029-003	K-B K B BEER	IL	8	
25	A-029-018	PABST BLUE RIBBON BREW / THE BREW THAT BRINGS BACK-MEMORIES (REVERSE HAS SLANTED LETTERS)	WI	6	
26	A-029-023	POTOSI BREWING CO. POTOSI, WIS. / "WISCONSIN LAGER" "THE DRINK FOR YOU"	WI	6	
27	A-029-064	THE WESTERN BOTTLE CO. HOME BOTTLING SUPPLIES 818 WADE ST. WEST 4436 WEST 0229 CIN'TI. OHIO (SEE A-5-13)	OH	2	
28	A-029-999	"FIRST FOR THIRST" OLD SCOTCH GINGER ALE		6	

## July 2000 JFO Auction-Closing August 16, 2000- Name &amp; Mem #:

29	A-029-999	DRINK CHERRY FLIP WEST TUSC. BOTTLING CO. GARF. 4465 CANTON, O.	OH	4	
30	A-029-999	NORTHWEST BEVERAGE COMPANY WHERE YOU GET ICE COLD BEER TO TAKE OUT / 172 <sup>ND</sup> & NEW EVERETT HIGHWAY RONALD STATION TELEPHONE RICHMOND BEACH 476 E. R. SMITH, MGR.	WA	6	
31	A-029-999	ORANGE-CRUSH BOTTLING CO.		2	
32	A-029-LOT	#3 K B #9 SCHLITZ #18 PABST		4	
33	A-030-999	(BLANK)		6	
34	A-044-003	C. SCHMIDT & SONS, INC PHILADELPHIA PENNA. / BREWERS SINCE 1860	PA	6	
35	A-053-999	"COMPLIMENTS EMPORIA BOTTLING WORKS EMPORIA, KANS."	KS	4	
36	B-001-005	PITTSBURGH BREWING CO. TECH BEER (VAR (B) STEEL)	PA	4	
37	B-001-999	HUTCHINSON CROWNS (PIC OF CROWN) CHICAGO	IL	4	
38	B-006-004	COLUMBIA BREW'G CO. ST. LOUIS / COLUMBIA BANNER BEER	MO	4	
39	B-013-020	ARGONAUT BEER SAN FRANCISCO	CA	6	
40	B-014-999	HOTEL COMMERCIAL MONTEBELLO - 423-6352		6	
41	B-014-999	IN MANILA THEY SAY "E-SWAN" IMPORTED ISUAN DRY GINGER ALE		6	
42	B-014-LOT	#19 GOETZ #25 GRAND PRIZE #27 HAMMS #37 IRON CITY #100 MANITOWOC		4	
43	B-014-LOT	#3 BERGHOFF #23 GOLDEN GLOW #41 SCHMIDT #54 MANITOWOC #118 SAND SPRINGS		4	
44	B-014-LOT	#38 PITTSBURGH #75 DORTMUNDER #85 GLUEK #90 GOETZ #110 GOETZ		4	
45	B-015-013	HABERLE CONGRESS BEER SYRACUSE	NY	6	
46	B-018-092	CALIFORNIA BOTTLING ASSN. DRINK ACME BREW	CA	4	
47	B-018-999	BIG CHIEF BEER (CANADIAN)		10	
48	B-018-LOT	#19 DAEUFER #65 RAINIER #197 K & S #297 READING		2	
49	B-018-LOT	#3 AMERICAN #10 BUSHKILL #23 DUBUQUE #45 MANITOWOC		6	
50	B-018-LOT	#66 ROBINSON #76 STEGMAIER #117 SCHMIDT		2	
51	B-019-023	COMPLIMENTS OF MAIER BREWING CO. INCORPORATED LOS ANGELES U.S.A. / DRINK "SELECT" BEER	CA	4	
52	B-019-054	COMPLIMENTS OF MAIER BREWING CO. INCORPORATED LOS ANGELES U.S.A. / DRINK MAIER BEER	CA	4	
53	B-019-095	COMPLIMENTS OF MAIER BREWING CO. INCORPORATED LOS ANGELES U.S.A. / FOR HEALTH MAIER'S SELECT MALT TONIC	CA	2	
54	B-019-149	DES MOINES BREWING CO. DES MOINES, IOWA / DRINK OLD TAVERN BEER	IA	6	
55	B-019-208	BLUE RIBBON PRODUCTS CO. MALT & HOPS / PHONE 3293 421 HAMILTON ST. ALLENTOWN, PA.	PA	6	
56	B-019-LOT	#7 DICKS #31 RAINIER #166 HAMMS		4	
57	B-021-010	COORS GOLDEN BEER	CO	6	
58	B-021-025	DRINK GUND'S KEG AND BOTTLE BEERS LACROSSE WIS. (G IN MUG) GOLD MEDAL 1904	WI	4	
59	B-021-052	DRINK MOERLEIN'S BARBAROSSA / THE FINEST BOTTLED BEER BREWED	OH	4	
60	B-021-072	RUHSTALLER'S LAGER BEST BEER BREWED SACRAMENTO, CAL.	CA	4	
61	B-021-138	MEMBERSHIP KEY TO SCHWARZENBACH BREWING CO. HORNEILL, N.Y. / THE BEER THAT MADE ITSELF FAMOUS	NY	4	
62	B-021-139	TERRE HAUTE BREWING CO. / DRINK CHAMPAGNE VELVET BEER	IN	4	
63	B-021-187	KEY TO THE NORTHAMPTON BREWING CO'S TRU-BLU BEER / THE BEER	PA	4	
64	B-021-200	THE PROVIDENCE BREWING CO'S BOHEMIAN BEER NEW ENGLAND'S FINEST ABSOLUTELY PURE / CANADA MALT ALE	RI	6	
65	B-021-264	INLAND BREWING & MALT CO. ASK FOR INLAND PALE	WA	4	

## July 2000 JFO Auction-Closing August 16, 2000- Name &amp; Mem #:

66	B-021-385	THE READING BREWING CO. U.S. STANDARD BEER (VAR (A)	PA	6	
67	B-021-508	MALTO-HOPO HEALTH BEVERAGE NEAREST DRUGGIST HAS OR GETS IT / "GOOD NIGHT" EYE CLOSER "GOOD MORNING" EYE OPENER		2	
68	B-021-999	KEY TO COLBY POP / J.A. WESTERMEIER MAKER COLBY, KANSAS	KS	6	
69	B-022-030	DRINK JUNG'S BEER CINCINNATI	OH	4	
70	B-022-LOT	#4 FALSTAFF #14 MINNEAPOLIS #45 INDIANAPOLIS (BROKE)		4	
71	B-023-021	FAMOUS NARRAGANSETT BEERS	RI	6	
72	B-023-026	RENNER YOUNGSTOWN, OHIO / LAGER BEER OXFORD ALE	OH	6	
73	B-023-999	RE-ELECT THOMAS J. MCDERMOTT GRAND TRUSTEE / N. S. G. W. SANTA CATALINA MAY - 1947	CA	8	
74	B-023-LOT	#7 DUQUESNE #20 MILLER #62 BRUCKS		4	
75	B-023-LOT	#9 EHRET #34 BRUCKS #81 PREMIER		4	
76	B-024-094	EXTRA PALE ALE BAVARIAN STOUT / PILSNER (IN BANNER) (CANADIAN)		4	
77	B-024-LOT	#1 ACME #5 BURGERMEISTER #16 GOLDEN GLOW #26A NARRAGANSETT #32 SCHMIDT #37 ACME		4	
78	B-024-LOT	#10 DUTCH CLUB #13 G B #17 GRIESEDIECK #21 KINGSBURY #26A NARRAGANSETT #33 SCHMIDT		4	
79	B-027-001	DRINK MILLER HIGH LIFE BEER MILWAUKEE (VAR (B) STEEL)	WI	2	
80	B-035-005	BLUE RIBBON PRODUCTS CO. READING-POTTSVILLE-LANCASTER YORK / TIP TOP MALT SYRUP HOME BEVERAGE SUPPLIES	PA	4	
81	B-063-001	BUFFALO BREWING COMPANY	CA	6	
82	C-003-999	STOP AT THE CAFE ON THE SQUARE R. P. ANTES, PROP		4	
83	C-004-001	PABST BLUE RIBBON / THE BEER OF QUALITY	WI	8	
84	C-005-002	PABST BLUE RIBBON / THE BEER OF QUALITY	WI	6	
85	C-006-LOT	#2 FALLS CITY #4 PABST #5 LONDON BOBBY		4	
86	C-007-001	UTICA-CLUB PILSENER-WUERZBURGER ITS IN THE TASTE PALE DRY GINGER ALE / SAME	NY	8	
87	C-007-999	DIAMOND GINGER ALE THE BEST SINCE 1865 / SAME		4	
88	C-009-021	BUFFALO BREW	CA	6	
89	C-009-025	OLD BOHEMIAN BREW	CA	6	
90	C-009-LOT	#3 BLATZ #6 EDELWEISS #7 STORZ #13 ABC		6	
91	C-010-002	AMERICAN BREWING CO. ROCHESTER, N.Y. / TAM O'SHANter ALE APOLLO BEER	NY	4	
92	C-010-020	ROCHESTER BREWING CO. INC. OLD TOPPER ALE (MAN IN TOP HAT)	NY	6	
93	C-010-028	MILLER HIGH LIFE BEER (BOTTLE)	WI	6	
94	C-011-013	SCHOENLING BEER CINCINNATI'S FINEST PHONE CHERRY 4-344	OH	2	
95	C-011-021	TIVOLI BREWING CO	MI	8	
96	C-012-007	DRINK FORT PITT THE GOOD BEER	PA	6	
97	C-012-046	FORT PITT BEER & ALE	PA	8	
98	C-012-096	RAINIER BREWING COMPANY, INC. SAN FRANCISCO, CAL. / 5 1/2% RAINIER BEER OLD ORIGINAL (BOTTLE)	CA	6	
99	C-012-146	MOOSE BREWING CO. ROSCOE, PA	PA	4	
100	C-012-999	7 UP DEMAND THE ORIGINAL		8	
101	C-012-LOT	#3 CAMDEN #10 GENESEE #18 NATIONAL #21 POELS #22 R&H		4	
102	C-012-LOT	#43 FELSENBRAU #53 NATIONAL #63 SIMON #83 GOLD BOND		4	
103	C-013-121	ALPEN BRAU BEER (BOTTLE)	MO	10	
104	C-013-135	GOENNER & CO. OLD MONARCH BEER	PA	6	
105	C-013-168	CHESTER BREWERY, INC. CHESTER, PA. CHESTER BEER "IT MAKES FRIENDS"	PA	4	

## July 2000 JFO Auction-Closing August 16, 2000- Name &amp; Mem #:

106	C-013-182	N B C CREAM ALE	NY	6	
107	C-013-206	F.W. COOK CO. EVANSVILLE, IND. COOK'S BEER	IN	6	
108	C-013-240	PIONEER FINE BEER	WI	4	
109	C-013-268	DRINK SOUTH FORK BEER	PA	6	
110	C-013-999	"HOME CIRCLE MALT"		4	
111	C-013-LOT	#18 CREAM CITY #71 MILLER #66 KRUEGER #80 PABST #110 STERLING #150 RHEINGOLD		6	
112	C-013-LOT	#19 DETROIT #50 HAMMS #60 IRON CITY #73 MUESSEL #109 STANTON		4	
113	C-013-LOT	#21 DOBLER #51 GLOBE #52 GOLDEN GLOW #97 SCHMIDT #132 GEM #208 COORS LIGHT		4	
114	C-013-LOT	#29 ELDREDGE #47 GENESEE #56 HAMMS #96 SCHLITZ #112 TERRE HAUTE #190 SCHAEFER		6	
115	C-013-LOT	#32 FALLS CITY #37 BREIDTS #48 GERMAN #71 MILLER #62 KB		4	
116	C-013-LOT	#32 FALLS CITY #38 FITZGERALD #48 OLD GERMAN #61 JONES #62 K B #91 RUPPERT		4	
117	C-013-LOT	#7 BREIDTS #36 FEIGENSPAN #41 FORT PITT #79 ORTLIEB #112 TERRE HAUTE #137 HEILEMAN		4	
118	C-013-LOT	#9 BRUCKS #19 DETROIT #23 DU BOIS #25 DUQUESNE #71 MILLER #74 NATIONAL		4	
119	C-014-008	OLD DUTCH BEER-ALE BROOKLYN, N.Y.	NY	4	
120	C-014-LOT	#3 FORT PITT #11 RHEINGOLD (A) #11 RHEINGOLD (B) #12 RHEINGOLD #14 RUPPERT #27 BURKHARDT		4	
121	C-015-LOT	#1 CAMDEN #2 FORT PITT #3 GENESEE #5 IRON #10 SCHAEFER #16 RHEINGOLD		4	
122	C-016-008	RUBSAM & HORMANN BREWING CO. NEW YORK CITY, N.Y. / CROWN PREMIUM BEER (CROWN)	NY	8	
123	C-016-LOT	#2 IROQUOIS #6 RHEINGOLD #9 SCHAEFER		4	
124	C-017-056	PERPLIES BEER BREWED WITH ARTESIAN WELL WATER	WI	8	
125	C-017-063	DRINK JAX / SAME (SMALL BOTTLE)	LA	4	
126	C-017-LOT	#10 HUDEPOHL #11 IROQUOIS #26 SCHAEFER #28 SCHOENLING #30 VALLEY FORGE		4	
127	C-017-LOT	#3 DAWSON #8 HANLEY #29 STANTON 366 ATLAS		4	
128	C-017-LOT	#5 FOX DE LUXE #20 PABST #21 PABST #34 DAWSON #52 ROCHESTER		6	
129	C-018-008	R & H BEER-ALE	NY	8	
130	C-018-009	ROLLING ROCK PREMIUM BEER	PA	8	
131	C-018-999	NORTHWESTERN LITHO, CO. MILWAUKEE 3, WIS. FINE LABELS FOR FIFTY YEARS	WI	10	
132	C-018-LOT	#4 INDEPENDENT #5 IROQUOIS #6 KNICKERBOCKER #9 ROLLING ROCK #10 SIMON #11 TROMMERS		4	
133	C-019-LOT	#2 FORT PITT (NO PAINT) #5 HUDEPOHL #6 INDEPENDENT #7 ROCHESTER (B)		4	
134	C-020-007	DRINK NEUWEILER'S FAMOUS BEERS ALLENTOWN, PA. / SAME	PA	4	
135	C-024-001	HOFFMAN (H LOGO)	NJ	6	
136	C-027-003	GUNTHER'S BREWS BALTIMORE, MD. WOLFE 0050	MD	6	
137	C-034-999	MISSION BEVERAGES NATURALLY GOOD		8	
138	C-035-999	FORT GARRY BREWERY LTD. (CANADIAN)		10	
139	C-042-001	BUSCH BEER	MO	10	
140	CBO-MISC-4	(B-49) HOLTZMAN REALTY CO. PHONE BERKSHIRE 1137 2850 NO. CENTRAL AVE. / REAL ESTATE, LOANS FIRST & SECOND MORTGAGES		4	
141	E-001-014	TROMMER'S GENUINE ALE TASTE AND COMPARE! / TROMMER'S MALT BEER TASTE AND COMPARE!	NY	6	
142	E-001-024	KOEHLER'S BEER OLD DOBBIN ALE	PA	6	

## July 2000 JFO Auction-Closing August 16, 2000- Name &amp; Mem #:

143	E-001-999	BLACK BEAR BEVERAGES SH. 7570 / BLACK BEAR BEVERAGES "A BEAR OF A DRINK"		6	
144	E-003-021	STANDARD BREWING CO. INC. ROCHESTER, N.Y. TEL. GLEN.0373 / STANDARD DRY ALE OLD OX CART BEER	NY	6	
145	E-003-053	LEINENKUGEL CHIPPEWA'S PRIDE BEER	WI	8	
146	E-004-014	BLATZ MILWAUKEE / DRINK OLD HEIDELBERG BREW	WI	6	
147	E-004-126	LUCKY X LAGER / ONE OF THE WORLD'S REALLY FINE BEERS X	CA	6	
148	E-004-136	REGAL AMBER BREWING CO. / REGAL PALE DE LUXE	CA	8	
149	E-004-192	ROBIN-HOOD BEER / SAME	NE	4	
150	E-004-311	SIOUX CITY BREWING CO. / WESTERN BREW (SCREWDRIVER TIP)	IA	4	
151	E-004-999	KOHLMAN'S BEVERAGES PHONE J. 2193 / KOHLMAN'S QUALITY BEVERAGES		6	
152	E-004-999	SHEA'S SELECT / SHEA'S STOCK ALE (CANADIAN)		6	
153	E-004-LOT	#7 ATLAS #57 MANHATTAN #68 PRIMA	IL	2	
154	E-005-999	R. BESSETTE EPICLER - GROCER BIERE-ALE-PORTER TEL. FI 0279 (PIC OF BEER BOTTLE WITH WORD BIERE)		6	
155	E-006-055	THE VICTOR BREWING CO. JEANNETTE, PA. / SAME	PA	8	
156	E-006-059	AL'S LAGER BEER / AL'S STRONG ALE	WI	6	
157	E-006-069	COOPER'S BEER YORK, PA. / SAME	PA	6	
158	E-006-124	TIVOLI BEER DENVER / SAME	CO	6	
159	E-006-126	WAGNERS QUALITY BEERS / SAME		6	
160	E-006-127	WALTER BREWERY TRIPLE BREW BEER / SAME (VAR (B) DIPPED TOP)	CO	6	
161	E-006-129	BOHEMIAN CLUB IT'S THE FLAVOR / SAME	WA	6	
162	E-006-136	FRESNO BREWING CO. FRESNO BOHEMIAN EXPORT / FRESNO BREWING CO. FRESNO LAGER BEER	CA	4	
163	E-006-153	TRU-BLU BEER NORTHAMPTON, PA. / SAME	PA	8	
164	E-006-162	DRINK THE FAVORITE GILT TOP BEER / SAME	WA	6	
165	E-006-170	AL'S STRONG ALE AL'S LAGER BEER / SAME	WI	6	
166	E-006-175	POINTER BREWING CO. CLINTON, IOWA	IA	8	
167	E-006-190	GOETZ TODAY'S FINEST BEER	WA	6	
168	E-006-204	DRINK GILT TOP BEER / SAME	WA	8	
169	E-007-002	BURKHARDT BREWING CO. BOSTON, MASS.	MA	6	
170	E-007-007	M.K. GOETZ BREWING CO. ST. JOSEPH, MO. / DRINK COUNTRY CLUB COUNTRY CLUB SPECIAL	MO	6	
171	E-007-010	PRIMA COMPANY BEVERAGES CHICAGO PHONE LINCOLN 4302	IL	6	
172	E-008-017	FINK BREWING COMPANY HARRISBURG, U.S.A. / DRINK THE BEST	PA	4	
173	E-008-020	HAMM-ST. PAUL WINDSOR CLUB PALE	MN	6	
174	E-008-040	RED TOP MALT EXTRACT CINTI., O. / SAME	OH	6	
175	E-008-999	DRINK HIRES IN BOTTLES / SAME		2	
176	E-008-999	DRINK MOXIE DRINK MOXIE / DRINK PUREOXIA DRINK PUREOXIA	MA	6	
177	E-009-064	SPRINGFIELD BREWERIES CO. / SPRINGFIELD BEER HAMPDEN ALE	MA	4	
178	E-009-089	DRINK COORS GOLDEN BEER / SAME	CO	6	
179	E-009-UL	HORLACHER'S (3 HANDLE SIDES BLANK)	PA	6	
180	E-011-LOT	#1 ATLAS #10 OLD DUTCH #11 SCHOENHOFEN #13 STEGMAIER		6	
181	E-011-LOT	#2 BREWERS #3 ANHEUSER-BUSCH #4 BUDWEISER #5 BUDWEISER		6	
182	E-011-LOT	#6 KAIER #7 KAIER #8 KAIER #17 KAIER	PA	6	
183	E-013-020	UTICA CLUB BEER & ALE / THE FAMOUS UTICA BEER	NY	6	

## July 2000 JFO Auction-Closing August 16, 2000- Name &amp; Mem #:

184	E-013-LOT	#8 HAMM #9 HAMM #13 MINNEAPOLIS #15 PABST #16 PABST #20 UTICA CLUB #23 BURKHARDT #24 HAMM #30 VALLEY FORGE		6	
185	E-014-018	BECKER'S BEER OGDEN, UTAH	UT	8	
186	E-014-060	DUBOIS BUDWEISER / DUBOIS EXPORT	PA	6	
187	E-014-063	DUQUESNE PILSENER / SILVER TOP BEER	PA	8	
188	E-014-086	FESSENMEIER BRG. CO. HUNTINGTON, W.VA. / WEST VIRGINIA BEER AND ALE	WV	6	
189	E-014-117	FRIENDLY GRAIN BELT / SAME	MN	8	
190	E-014-163	KESSLER BREWING CO. KESSLER BEER / SAME	MT	6	
191	E-014-223	PILSEN BREWING CO. CHICAGO, ILL. / YUSAY BEER YUSAY BEER	IL	6	
192	E-014-245	ROYAL "58" BEER ROYAL "58" BEER / MAKE A DATE WITH "58" MAKE A DATE WITH "58"	MN	6	
193	E-014-444	STAR UNION BREWERY STAR MODEL BEER / SAME	IL	8	
194	E-014-469	BLACKHAWK BEER / SAME	IA	2	
195	E-014-542	ROBIN HOOD BEER ROBIN HOOD BEER / SAME	NE	6	
196	E-014-554	SPRENGER BREWING CO. LANCASTER, PA. / SAME	PA	6	
197	E-014-770	COLD SPRING BR'G CO. LAWRENCE, MASS. / COLD SPRING ALES-BEER	MA	6	
198	E-014-788	GOLDEN GRAIN BELT / FRIENDLY BEER FRIENDLY FLAVOR	MN	8	
199	E-014-793	HIGHLANDER PREMIUM BEER	MT	8	
200	E-014-807	PFEIFFER BREWING CO. ST. PAUL, MINNESOTA / PFEIFFER'S FAMOUS BEER	MN	8	
201	E-014-821	PFEIFFER'S FAMOUS BEER / SCHMIDT BEER OF ST. PAUL	MN	6	
202	E-014-822	SCHMIDT BREWING CO. ST. PAUL, MINN. / REAL DRAFT BEER FLAVOR	MN	6	
203	E-014-828	STONE'S PILSENER	PA	8	
204	E-014-999	DRINK SPARKLING JUMP		4	
205	E-014-999	GREEN BAY BEVERAGE CO. DIAL 432-4529	WI	8	
206	E-014-LOT	#1 POLAND SPRING GINGER ALE / POLAND WATER POLAND CLUB SODA #2 DRINK-RULON BEVERAGES DRINK-RULON BEVERAGES / SAME #3 "FRESH UP" WITH SEVEN-UP / SAME		4	
207	E-014-LOT	#107 GLUEK #188 MILLER #194 NARRAGANSETT #555 STAG		4	
208	E-014-LOT	#26 BLATZ #81 FALSTAFF #138 HAND #174 LEINENKUGEL	WI	4	
209	E-014-LOT	#50 COORS #52 COORS #63 DUQUESNE #63 DUQUESNE (OLD E-12 STYLE) #193 MUEHLEBACH #696 ROYAL BOHEMIAN		6	
210	E-014-LOT	#73 EL DORADO #185 METZ #226A QUEEN CITY #455 WALTER		4	
211	E-016-004	THE CUMBERLAND BREWING CO. "OLD EXPORT BEER"	MD	6	
212	E-025-001	ALWAYS USE BLUE RIBBON MALT EXTRACT & HOPS.	PA	4	
213	F-005-999	LITHIA BOTTLING CO. PHONE 339 / DRINK LITHIA SODA WATER		6	
214	F-006-999	FREMONT BOTTLING WORKS / GOLDEN ROD SODA WATERS (LOOKS LIKE AN E-4 ICE PICK END HAS BROKEN OFF)	NE	4	
215	F-023-999	SERVE POPULAR CLUB GINGER ALE		4	
216	G-001-040	ROBIN HOOD BEER HITS THE SPOT (BOTTLE)	NE	6	
217	G-001-046	BERGHOFF 1887 BEER	IN	4	
218	G-003-003	HAMM'S BEER "LEADS THEM ALL"	MN	4	
219	G-003-999	ADLERIKA SUPERIOR TO LAXATIVES		6	
220	G-003-999	HOTEL BISMARCK CHICAGO	IL	8	
221	G-003-999	KRAMER'S BEVERAGES ATLANTIC CITY'S OWN FINEST IN DRINKS	NJ	4	
222	G-004-004	DRINK HOLLAND PREMIUM BEER	MI	6	



## July 2000 JFO Auction-Closing August 16, 2000- Name &amp; Mem #:

223	G-004-006	LITHIA BEER	WI	6	
224	G-004-007	MILLER BREWING CO. MILWAUKEE, WIS. MILLER HIGH LIFE BEER	WI	8	
225	G-004-010	JUNG BEER	WI	6	
226	G-004-012	ENJOY MARATHON LAGER MILWAUKEE, WIS.	WI	6	
227	G-004-014	TAVERN PALE	IL	6	
228	G-006-012	SCHELL'S BEER NEW ULM, MINN.	MN	8	
229	G-007-005	GUNTHER BREWING CO. INC. BALTO., MD. GUNTHER'S PREMIUM DRY BEER	MD	8	
230	G-009-012	ORTLIEB'S PREMIUM LAGER BEER (BLACK ON GREEN)	PA	4	
231	G-009-018	SCHMIDT'S CITY CLUB BEER (BLACK ON RED)	MN	4	
232	G-009-020	SIMON PURE BEER-ALE (BLACK ON RED)	NY	4	
233	G-009-044	SCHMIDT'S CITY CLUB BEER (GOLD ON RED)	MN	6	
234	G-024-001	COORS LIGHT BEER GET:A:GRIP (BOTTLE)	CO	8	
235	G-025-999	JUNGLE CLUB 25 STONE ST. ROCHESTER, N.Y.	NY	2	
236	G-027-001	BUD LIGHT (ON NECK LABEL) BUD LIGHT (LABEL) / EVERYTHING ELSE IS JUST A LIGHT	MO	10	
237	G-999-LOT	G-7-3 FORT PITT G-7-13 GLUEK G-8-10 STANDARD G-8-11 SUNSHINE G-13-3 PERFECTION		4	
238	H-002-015	DUQUESNE OF PITTSBURGH, PA. "THE FINEST BEER IN TOWN"	PA	4	
239	H-002-016	DUQUESNE PILSENER "THE FINEST BEER IN TOWN"	PA	4	
240	H-002-068	JACOB LEINENKUGEL BREWING CO. CHIPPEWA FALLS, WIS. A FAVORITE SINCE 1867	WI	6	
241	H-002-999	KALAK FOR OVER ACIDITY NOT A LAXATIVE	NY	8	
242	H-002-999	KALAK THE STRONGEST ALKALINE WATER OF COMMERCE	NY	4	
243	H-002-999	PENN'S DELICIOUS SOFT DRINKS READING, PENNA.	PA	4	
244	H-002-LOT	#7 BURGER #13 DUQUESNE #26 KOEHLER #36 SCHMIDT #37 SCHMIDT #39 TECH #42 TRU-BLU		4	
245	H-003-037	GIBBONS ALE BEER	PA	4	
246	H-003-049	MILLER HIGH LIFE BEER (LADY IN QUARTER MOON)	WI	6	
247	H-003-999	HUTCHINSON CROWNS	IL	8	
248	H-003-LOT	#4 DUQUESNE #6 EDELWEISS #11 KOEHLER #13 HOHENADEL #15 IRON CITY #22 SCHLITZ		4	
249	H-005-010	FARMERS BREWING CO. / SHAWANO WISCONSIN	WI	4	
250	H-006-012	PABST BREWING CO., MILW., WISC. PABST BLUE RIBBON DISPLAY NO. 2463 / WHAT'LL YOU HAVE? PABST BLUE RIBBON	WI	6	
251	H-008-005	ESSLINGER'S QUALITY BEER (LITTLE MAN STANDING) (REST IN HANDBOOK)	PA	4	
252	H-011-001	ADLER BRAU	WI	4	
253	I-006-999	TODDY "CHOCOLATE MALT"		6	
254	I-007-009	FOR OPENING BROWN DERBY BEER CANS OR BOTTLES	CA	8	
255	I-007-057	REGAL PALE THE MOST REFRESHING THING ON ICE	CA	8	
256	I-007-999	ALWAYS DRINK KEMP'S SUN-RAYED PURE TOMATO JUICE (SUN)		6	
257	I-027-001	BLATZ / SAME	WI	8	
258	J-005-LOT	#13 GRIESEDECK #18 HORNING #31 RED TOP #32 REGAL #72 ATLAS #77 FALSTAFF #87 GAMECOCK		4	
259	J-005-LOT	#24 MILLER #35 SCHAEFER #37 SCHMIDT #40 STERLING #73 BERGHOFF		6	
260	J-005-LOT	#3 BALLANTINE #6 COORS #22 KRUEGER #39 STAG #45 UTICA CLUB #63 MUEHLEBACH		4	
261	J-008-LOT	#1 DAWSON #2 DUQUESNE #3 FOX HEAD #8 STEGMAIER #10 HUDEPOHL		4	

## July 2000 JFO Auction-Closing August 16, 2000- Name &amp; Mem #:

262	J-999-LOT	J-3-11 SCHMIDT J-4-1 ARROW J-6-1 ACME J-6-3 ATLAS J-6-32 STORZ J-9-1 COORS		4	
263	L-003-004	MICHELOB (SCRIPT LETTERS) BEER (EAGLE IN A)	MO	6	
264	L-009-001	BUD KING OF BEERS (REST IN HANDBOOK)	MO	10	
265	M-003-011	CUMBERLAND (BLACK/OTT) (REST IN HANDBOOK)	MD	6	
266	M-003-013	PHILADELPHIA (RED) (REST IN HANDBOOK)	PA	4	
267	M-003-014	PIEL'S (GREEN) (REST IN HANDBOOK)	NY	4	
268	M-017-001	BUDWEISER KING OF BEERS	MO	10	
269	M-019-012	BURGER / SAME	OH	4	
270	M-019-022	SCHLITZ (IN LOGO)	WI	6	
271	M-029-007	STERLING MELLOW BEER	IN	4	
272	M-029-999	WILLOW SPRINGS BOTTLING CO. OMAHA, NEBR. SQUIRT	NE	4	
273	M-034-003	MILLER HIGH LIFE	WI	10	
274	M-039-008	INTERNATIONAL (REST IN HANDBOOK)	NY	4	
275	M-054-001	STROH'S BEER DETROIT, MICH. 48226	MI	8	
276	M-089-001	HANDY BOTTLE OPENER FOR BUDWEISER (INCLUDES CAP COVER)	MO	6	
277	M-097-001	(EAGLE IN A) MILITARY SALES	MO	10	
278	M-104-001	BLUE RIBBON BUDWEISER (REST IN HANDBOOK)	WI	8	
279	M-999-Lot	BALLANTINE M-010-002 M-011-001 M-013-001		4	
280	N-003-001	SCHMIDT'S LIGHT BEER	PA	10	
281	N-009-008	VIENNA BREWING CO. CINCINNATI VIENNA STYLE BEER	OH	4	
282	N-009-033	CLIMAX PALE DRY GINGER ALE	VA	8	
283	N-009-999	GALSO WATER		8	
284	N-009-999	SILVER STATE CARBONATED BEVERAGES RENO	NV	6	
285	N-011-002	STONE'S "AMERICA'S BEST" BEER	PA	6	
286	N-037-002	STROH'S BEER	MI	10	
287	N-040-004	COORS BREWED WITH PURE ROCKY MOUNTAIN SPRING WATER	CO	10	
288	N-040-007	LONE STAR BEER (STAR IN CENTER)	TX	8	
289	N-040-018	COORS BANQUET BEER (REST IN HANDBOOK)	CO	10	
290	N-056-001	MILLER HIGH LIFE	WI	10	
291	N-062-001	HUND AND EGER COCA-COLA AND SCHLITZ ST. JOSEPH, MO. (MINIMUM BID \$50)	MO	6	
292	N-095-001	FALSTAFF (IN SHIELD) PREMIUM QUALITY FALSTAFF (MINIMUM BID \$50)	MO	6	
293	O-016-002	STEGMAIER GOLD MEDAL BEER WILKES-BARRE, PA.	PA	8	
294	P-002-008	COMPLIMENTS OF THE GREENWAY BREWING CO. (VERY TIP OF WORM MISSING) (MINIMUM BID \$80)	NY	6	
295	P-008-117	PABST (SCRIPT) MILWAUKEE / SAME	WI	4	
296	P-102-001	INDIANAPOLIS BREWING CO / PROGRESS BRAND (ON BLADE) INDIANAPOLIS BREW'G CO. GERMANY (MINIMUM BID \$100)	IN	4	
297	Q-020-002	MILLSTREAM (RED ON WHITE) (REST IN HANDBOOK)	IA	10	
298	Q-029-001	COORS LIGHT BEER (WATERFALL LOGO)	CO	10	
299	Q-999-LOT	Q-18-131 PORT WASHINGTON Q-31-85 BONNEMA (BLACK ON WHITE) Q-36-49 FOUR PEAKS (WHITE ON BLUE) Q-36-16 WIT		8	
300	R-001-002	INTERNATIONAL BREWERIES (REST IN HANDBOOK)	NY	2	
301	Z-999-LOT	G-1-7 EBLING G-1-18 OLD READING G-8-24 ESSLINGER G-13-3 PERFECTION H-1-13 SUNSHINE I-16-11 LANCERS		4	

# Corkscrew / Opener Books - Discount Order Form

Qty.	Title	List Price Each	Special Price (Save \$\$\$)	Total
	The Ultimate Corkscrew Book	\$89.95	\$75.00	
	Bull's Pocket Guide to Corkscrews	\$19.95	\$18.00	
	Just for Openers	\$29.95	\$25.00	
	Soda Advertising Openers	\$29.95	\$25.00	
	Virginia Residents add 4.5% Sales Tax			
	Shipping Charges		See below*	
	<b>TOTAL ENCLOSED:</b>			

\*Shipping charges chart (circle method desired):

Book	U. S. Priority	International Sea and Canada	International Air
The Ultimate Corkscrew Book (per book)	\$8.50	\$14.00	\$35.00
Bull's Pocket Guide (up to 3 books)	\$3.20	\$7.00	\$20.00
Just for Openers (per book)	\$3.20	\$7.00	\$20.00
Soda Advertising Openers (per book)	\$3.20	\$7.00	\$20.00
Delivery Time	2-4 days	(Int'l 5-10 weeks) (Canada 4-8 days)	4-8 days

NAME: \_\_\_\_\_

ADDRESS: \_\_\_\_\_

CITY / STATE / COUNTRY / POSTAL CODE: \_\_\_\_\_

TELEPHONE: \_\_\_\_\_

EMAIL ADDRESS: \_\_\_\_\_

Non-USA residents please remit using an International Money Order or U. S. Dollar traveler's check only. All payments must be drawn on a U. S. bank. Make checks payable to BULLWORKS.

Mail order to:

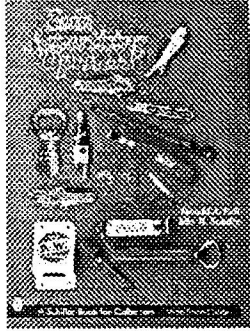
Bullworks  
c/o Donald A. Bull  
P. O. Box 596  
Wirtz, VA 24184, USA

Tel. 540-721-1128 Fax: 540-721-5468

email: [corkscrew@bullworks.net](mailto:corkscrew@bullworks.net)

The Virtual Corkscrew Museum: <http://www.bullworks.net>

# Corkscrew / Opener Books



## ***Soda Advertising Openers***

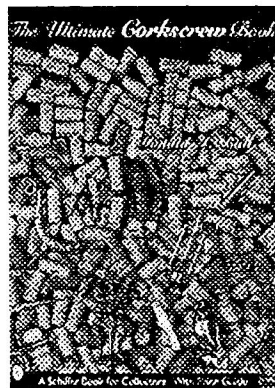
by Donald A. Bull & John R. Stanley

(Available – February 2000)

The book features:

- 160 (8 1/2" x 11") pages
- Softcover
- 275 Color Photographs
- 2500 Openers and Corkscrews cataloged and valued
- Opener Patent References
- Price Guide

The world of soda advertising bottle and can openers is explored here with over 275 photos featuring hundreds of openers - Coca-Cola, Pepsi-Cola, Nehi, Cheerwine, Nu-Grape, Red Rock Cola, Moxie, Hires, and Royal Crown to name a few - along with information on American patents, opener manufacturers, soda producers, opener packaging, and modern, foreign, and fantasy openers; hints on grading and cleaning openers; an index; and a price guide. An additional catalog index of over 2,500 known soda advertising openers is organized by type. With such a wealth of information amassed into one volume, this book is destined to become the bible for soda opener collectors.



## ***The Ultimate Corkscrew Book*** by Donald A. Bull

(Published January, 1999)

*The Ultimate Corkscrew Book*

is divided into four parts:

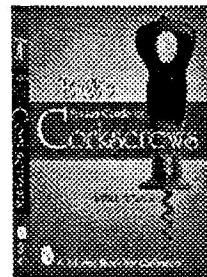
- Eclectic Corkscrews
- Figural Corkscrews
- Corkscrew Knives
- Miscellaneous

The book features:

- 320 oversize (9" x 12") pages
- 1 1/4" Thick (a BIG BOOK!)
- Weight: 5 Pounds
- Hardcover
- 744 Color Photographs
- 3746 Corkscrews and go-withs
- 82,000+ words
- Price Guide

In the Foreword, corkscrew expert Ron MacLean writes:

"This volume is the armchair guide to corkscrews. By perusing the 3700+ illustrated and documented examples, it is possible to gain an understanding of the diversity and creativity that occurred in the past several hundred years. Perhaps this book should more correctly be named 'Everyman's Guide to Corkscrews' as it covers the entire range of this twisted hobby! The wisdom contained within these covers is mind boggling in both depth and scope. Don Bull has succeeded in accurately cataloging and illustrating a variety of objects so diverse that many lesser mortals would have seen the task as impossible. His text covers a broad variety, from items of quantity to those of quality, from the mundane to the exquisitely rare. This text will open the eyes of every devotee, from the novice to the true addict. In the end it may even cause the odd collector to abandon the search as a hopeless pursuit, but for most of us it will revitalize our energy and provide the motivation to hunt with even more fanaticism!"



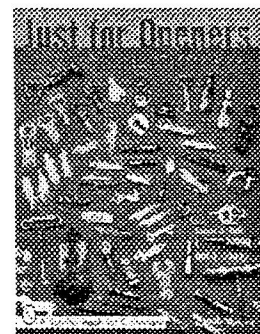
## ***Bull's Pocket Guide to Corkscrews*** by Donald A. Bull

(Published March, 1999)

The book features:

- 190 (6" x 9") pages
- Softcover
- 200 Color Photographs
- 942 Corkscrews with values

The pocket guide is a great gift for friends, relatives, and pickers. Also, keep one in your backpack or glove compartment for trips to antique shows and fairs. The Pocket Guide is ideally suited for the novice corkscrew collector who wants an overview of the various types of corkscrews and their values. The more serious collector should consider *The Ultimate Corkscrew Book*.



## ***Just for Openers - A Guide to Beer, Soda & Other Openers***

by Donald A. Bull & John R. Stanley

(Published June, 1999)

The book features:

- 160 (8 1/2" x 11") pages
- Softcover
- 380 Color Photographs
- 850 Openers and Corkscrews Pictured
- Opener Patent References
- Price Guide

*Just for Openers* is a price guide and classification guide for Beer Advertising Openers and Corkscrews. A separate section contains openers from World's Fairs, Pepsi Cola, Dr. Pepper, Coca Cola, Nehi, Chero Cola, other soda companies, and opener manufacturers. In 1978, *Beer Advertising Openers, A Pictorial Guide* by Donald Bull was published and JFO was formed. In 20 years the number of beer advertising openers classified has grown to over 800 and the club has over 300 active members. This is the complete up-to-date volume. A necessity for all opener collectors.