

Just For Openers JAN 2006 Issue #109

P-63-1 Gerst Beer Nashville, Tenn.

A nice "pocket corkscrew". Shown are two examples and they have two different colored handles that appear to be bakelite. Fairly hard to find with advertising. Thanks to Norm Jay and Larry Moter for these two. Gerst was going strong when this opener/corkscrew was put out in the 30s.



Copyright 2006

John Stanley
PO Box 64

Chapel Hill NC 27514-0064
(919) 419-1546

Web Site

www.just-for-openers.org

Past Editors:

Don Bull (1979-83)

Ed Kaye (1984-88)

Art Santen (1989-1993)

Annual Dues \$20.00

Renewal Due Date: 03/31/06

Opener & Corkscrew Books
(details in Selling Ads)

2006 Handbook of United
States Beer Advertising
Openers & Corkscrews by
Bull, Kaye & Stanley

"Just For Openers" "A Guide
to Beer, Soda, & Other Open-
ers" by Donald A. Bull & John
R. Stanley

"Soda Advertising Openers"
by Donald A. Bull & John R.
Stanley

"Beer Advertising: Knives,
Letter Openers, Ice Picks,
Cigar Cutters and More" by
Donald A. Bull

"The Ultimate Corkscrew
Book" by Donald A. Bull

"Bull's Pocket Guide to Cork-
screws" by Donald A. Bull

"Boxes Full of Corkscrews"
by Donald A. Bull

"ANRI Woodcarvings: Bottle
Stoppers, Corkscrews, Nut-
crackers, Toothpick Holders,
Smoking Accessories and
More" by Philly Rains and
Donald A. Bull

Inventory of Canadian Beer
Advertising Openers & Cork-
screws by George Vine

2006 JFO Convention #28 April 19-23 Nashville TN

It's less than four months away so it is time for everyone to make their conventions plans. The registration form is on the last two pages. Nashville is a great city to visit and is very centrally located for many members. As always this promises to be a great convention for camaraderie, openers, corkscrews and just having a good time. Pat Stanley is running the show so you know it will be a great one. The Holiday Inn has 13 floors and as of right now, the hospitality room will be on the second floor. So when you check in the closer you can get to this floor, probably the better. The staff has been very co-operative. For people flying the airport is just a mile away on the south side of the interstate.

In the next couple of months Pat and I will be finalizing the convention agenda (any recommendations are welcomed). We are leaning towards doing some kind of group function Friday afternoon but haven't decided. For the most part our conventions have been very successful letting members have free time to do what they want. The hotel does provide a shuttle to the Opryland Mall which is about two miles away. Downtown is six miles away and has a lot of sightseeing places within a close walking distance.

Please take the time to register at the hotel if there is any chance you are coming. See the registration form for the direct number to the hotel or you can call 1-800-HOLIDAY. Make the 2006 JFO Convention a vacation stop for you this year.

2007 JFO Convention #29 April 25-29 Harrisburg PA

Ben Hoffman and David Hoffman (no relation) are working on plans for the 2007 convention to be in Harrisburg, Pa. at the Holiday Inn. Also chipping in with support will be "Mr. I-7", Todd Milano. Ben is working with the hotel now trying to get a final contract. It has been a few years since we were in the Northeast (1997 Buffalo) so no excuses for anyone living within three hours driving distance. More next issue.

Member's Update

It is great sadness for me and collectors in general that I report the passing of Raymond Braeuner on August 14, 2005. Ray was one of the early members of JFO and amassed a fabulous collection of openers and all kinds of breweriana. Ray ended up selling me a lot of his openers and is the reason I really got super interested in collecting openers (he provided the spark for me to take over as Editor). More on Ray on the next page. Few collectors there have been who could match his generosity.



Correction From The Last Issue

My assistant (Pat) typed www.bottleopeners.com, should be www.bottleopener.com (no S). Of course the proof reader (me) should have caught it. David's web site is definitely worth checking out.

Raymond Braeuner "Breweriana Collector" JFO #195

That was what Ray's return address label said, "Breweriana Collector". I first met Ray at the JFO 1988 St. Louis Convention. Having Pat at her first convention (we had only been married a few months), I figured no big rush getting down to the public show on Saturday morning. I got down there at 8 o'clock and you know it's bad when the first words out of Gary Deachman's mouth is, "you're too late." Ray Braeuner had been there and set up before 7AM and the "old timers" knew that and had descended on his table like a store having a 90% off sale. Ray had brought hundreds of different beer openers for sale and of course I had missed out on the real good ones but still added a few to my collection. The one thing I remember most was Ray brought a "Reiker Mount" display of really tough types that he had gotten in the last year. It was really for display but if you had a Missouri opener he needed he would trade out of it. Gary can attest to finding Ray B-18-397 Middle West in poor condition and Ray traded him four dynamite "A"s and "B"s for it (the years gone by have let Gary forget exactly what he got). Anyway I spent the morning drooling over the display and like most everyone else begging Ray to sell some out of there, but he would just laugh and say "find me something I need."

A couple of years went by and Ray had been running an ad in JFO wanting to trade openers. I called him one Sunday and as his health was declining (he had been in a railroad accident a few years before and was on disability), and since no one had written about his trade ad he inquired if I wanted to buy some openers from him. It started out with a few southern "B"s and then progressed to some really tough "A" types. I remember well I had offered him \$100 for an A-19-2 Lone Star and it was the first big price "A" I got from Ray. He had been careful sending other openers, but this one he put the wrong zip on it. It took two weeks and I was really worried he thought I was pulling a fast one on him but it finally came (he always told me to pay him when I got them). The second big "A" was an A-10-1 Muehlebach Eagle and I offered \$100 for it (hardly anyone had the style then and it had a full hook). At the time Pat and I lived on Windsong Lane and darn if Ray didn't send this one to Birdsong Lane. It took two weeks but it made it. I was starting to think he liked these misadventures but from then on he was always correct on my address.

At the time thinking I had hit the "big leagues", Ray asked one day if I wanted to buy all of his "C"s and "E"s for fifty cents each. He would just count them out and send them. Being a real "rocket scientist" and having a real swelled head with all I had gotten from him, I told him, "No I am just an A & B collector". He sent 200 from that pile to Joe Cardone to run in one of his auctions and Joe got \$1,200 just for those randomly selected 200. It took a few years but it really sunk in later how stupid I was to pass on that deal.

The buying of good "A"s, "B"s and types went on for a couple of years when Ray said one day, "enough of selling piecemeal,

I want you to buy the rest of my "A"s and "B"s as one lot." It took several months but first I bought 135 different U. S. beer "A"s for \$1,000 (a lot of nice ones and I sure wish I had been a little smarter and kept more). That was followed soon after by me buying 550 different U. S. beer "B"s for \$2,100. Ray always liked cash so I would send the payment that way in padded envelopes. The "B"s arrived just before Pat and I helped with the second North Carolina JFO Convention. Lets just say I had a field day wheeling and dealing on these openers. Many made it into my collection but it was a deal of a lifetime for me.

We continued dealing as I bought his "D"s, "M-3"s, and a lot of Missouri openers but by 1993 he had sold most everything. We stayed in touch as the years went by and first his wife had to be put in a rest home and he followed shortly afterwards in the late 1990s. A couple of years ago his JFO newsletter was returned with no forwarding address. I was told by a local collector he passed away but then checking the Festus, Mo. obituaries this fall I found his death notice. Ray was one of the early giants of opener collecting and like many other fine members JFO has lost the last few years, can never be replaced. I know he is in opener heaven now wanting to know if anyone has a "Missouri" opener he needs.

"On The Road" with Mike Krejci #909

Greetings from the road. This report starts with a "perk". No not the coffee kind, a perk on the job. I sometimes get to visit folks along the way. Back in October I was in New Hampshire. I loaded a machine just south of where Gary Deachman lives and I decided to stop for a visit. I didn't have his phone number and my cell phone wasn't working. So I found a land line and called John Stanley to get Gary's number. I dialed Gary's number and got a busy signal. I asked a local cop if he knew where Gary lived-he did, but had an emergency call and couldn't give me much in the way of directions. So I drove towards town. I stopped at a store and tried calling Gary again. I got an answer, but it was a wrong number! The fella was able to give me the right number. But when I dialed it, no answer. The clerk at the store had a pretty good idea of where Gary lived but wasn't sure if I could get there by truck. Then a neighbor of Gary's came in the store and was able to give me GOOD directions and said the car was home minutes before. So armed with this information I headed to Gary's. I think Gary was surprised to see me at his front door and even more surprised to see my truck parked out front. I must say I had a very enjoyable visit. It was worth all the trouble of getting there. Another plus was getting off the main hiway and I must say Gary lives in a very picturesque area. The fall colors were dynamite as well.

This last quarter I did a little buy/sell/trade with Harold Queen on some C-49's. I added six or seven to my collection and Harold was able to add some to his collection. I also got involved in a deal with a Mr John Stanley. He was selling off some nice Wisconsin openers from his collection. He had a fixed price list and by the time this deal is completed my budget will be broken! I will add some tough WI openers to my collection, most notably an A-17-27 Rahr that I have been hunting for awhile. The down side is that I tore the heart out of my collection (N-78 Bartels Crown) in the process. I will be adding six or seven nice Wisconsin openers to my collection and John gets some nice pieces for his, along with a wad of cash from me. That's what keeps me trucking and America's goods, one truck load at a time moving!

Continued on Bottom of Page 27.

Spouse's Corner

By Pat Stanley, the Editor's Spouse

Christmas is past so it's countdown to JFO Nashville!!

We will be arriving there in my Expedition as John traded his for a little sardine can that you have to pry open with a can opener to get passengers out. And you know how much he likes to bring to JFO!! Plus we are the hosts this time, no local collector, so we will be packed tight. (Just got sidetracked...checking to see how close a Sam's Club is just in case we need more snacks...one is 7.4 miles away and another is 9 miles, so we will be fine.) I think he is saving gas money for more openers, though I hear that he's been selling a few lately too!

I have certainly benefited from this "thinning out his collection" phase. Now I know you guys won't want your spouses to read this, but here it goes. Years ago we found out that the cousin who just sold him his new car was doing the "Twelve Days of Christmas" for his wife. You are suppose to get little thoughtful gifts for each day starting on the 14th of December. Now that cousin isn't on my most favorite list when it comes to his car sales, but the Twelve Days are really fun. I came home from work on the 14th and there was an envelope "Day 1". I have cash, gift cards for restaurants, clothing stores, bookstore...even \$30 gift card for Godiva chocolate...hey Herb, Camille is reading this! So his thoughtfulness goes beyond the twelve days as I use my gift cards in the months to come. Each day as I turned off my computer at work, preparing to come home, I remembered...a gift would be waiting for me. John got sick during the twelve days and I thought it would end early, but no...he did "good". Now if you guys don't consider yourself to be fools, perhaps you should start the 12 Days Preceding JFO on Fool's Day with thoughtful gifts!

I'm suppose to be reviewing 2003 newsletters, but I thought I might just wing it this time.

Corkie will be attending JFO 2006. Pets are welcomed. You do have to make a pet deposit of \$125.00, but \$100.00 is refundable upon inspection of the room at check out.

Guestrooms feature complimentary High Speed Wireless Internet so you can keep in touch with eBay. We wouldn't want John to go into withdrawal even though JFO is a lot more fun as Ollie would say as you deal face to face with people, the best part of collecting!! And Ollie adds, "You Be There!".

For those spouses who would like to shop, the hotel offers a complimentary shuttle at scheduled departure times to the Opry Mills Shopping Complex.

So collectors, pets and spouses should all have a good time!!

I will soon be in the 12 Weeks Preceding JFO. It will be a busy time, but JFO is "the" event of each and every year. I won't be able to whip up any banana pudding like we did when we hosted the convention in Durham, but one of the things we like about the Holiday Inn is that they have a great chef making omelets to order every morning...a real treat! My time is more limited than it was with JFO 90 and 91, but I will do my best to make this a great convention...but what makes it so is really the people attending and the fact that everyone goes home with something to add to their collection...something that brings a smile to their face whenever they reflect back on JFO.

I will be looking for your names when I print name badges. And I will be looking forward to your happy face when you arrive.

In the meantime, I will be keeping the big secret...what's the convention opener going to look like this year. Haven't seen the first proof yet, but I do know what John is planning. Have you figured out that he loves this hobby and the annual convention is the biggest highlight of his year?

Countdown to JFO....at Just Fun Opryland.

Pop a cork this New Year's

Corkscrew collecting is coming of age

BY JUDY PENZ SHELUK — FOR ANTIQUE TRADER DECEMBER 28, 2005



An English 19th-century Four Pillar King's corkscrew has a side handle and cleaning brush. It sold for 420 pounds (approximately \$720 at current U.S. exchange rate) at Christie's auction in London in November 2005. Photo courtesy of Christies Images Ltd. 2005.

For many of us, New Year's Eve brings to mind the sound of champagne corks popping and the setting of resolutions, made with the best of intentions. For the helixophile — also known as a collector of corkscrews — it's another reason to celebrate a somewhat quirky hobby.

Corkscrews have been included at the tail end of wine-related auctions for many years, but it was not until May 1994 that a major sale was dedicated to corkscrews. Held at Christie's South Kensington, London, several major collections have since followed at the same location. In November, the auction included 219 corkscrews, fetching a total of 84,768 pounds (approximately 146,000 U.S. dollars).

"The market has remained steady over the last 10 years for this niche area of collecting," said Dennis Cox, department head and corkscrew specialist, Christie's South Kensington. "Prices generally range from about 100 to 6,000 pounds (approximately \$170 to \$10,250). However, for corkscrews of exceptional quality and rarity, higher prices can be achieved."

Such was the case at Christie's South Kensington May 1997 auction of the collection of Dr. Bernard Watney founding member of the elite organization International Correspondence of Corkscrew Addicts. That day, an English early to mid-century silver pocket corkscrew set a world-record price of 18,400 pounds (approximately \$31,500).

"That corkscrew had exceptional provenance," said Cox. "The handle was engraved 'E*H 1st November 1743.' A later presentation

inscription, 'From the Queen, Jan 1910, AR,' indicated that the corkscrew had been a gift from Queen Alexandra (Regina), wife of Edward VII."

Collectors of lesser means need not fear. Interesting examples still can be found for a few dollars. "Today there is a fascinating world of corkscrews out there for all souls with a passionate or curious interest," said Cox. "Over the past 200 years, a tremendous number of styles, patents, and variations thereof have been produced."

It is believed that corkscrews were first mentioned in text as the "bottle scrue" in the late 17th century, and for almost a hundred years it remained a fairly simple appliance: the straight forward T-handle, the folding bow, the pocket example where the screw on or in a sheath doubles as a handle.

The tide turned when the first corkscrew patent was granted in England in 1795 to the Rev. Samuel Henshall, who affixed a simple disc between the worm and the shank. Now known as the Henshall Button, the disc or button was intended to compress the cork and break the adhesion as it was being withdrawn.

"By comparison, Edward Thomason's patent of 1802 was extremely sophisticated," said Cox. "His invention enabled the user to (by turning the handle) pull the cork from the bottle --- without the need to touch it by hand. Original versions, of which there are many, are named and bear the motto 'Ne Plus Ultra.' From then on, literally hundreds of patents and registered designs have been recorded, in the U.S., U.K., France, Italy, Germany, etc., not to mention the corkscrews that were just produced, anonymous and otherwise."

The unique appeal prompted Dean Walters to begin Vintage Antiques in 1983. Although he specializes in "vintage" ephemera and other



Pair of "roundlet" folding pocket corkscrews, designed to be carried in a pocket or purse. The plain, large one is late 19th-century English, nickel-plated, with a whistle in the handle --- possibly for use by a doorman or to be taken on a fox hunt. The engraved, smaller one is sterling silver, made by George Shiebler, New York, and was likely made for inclusion in a lady's vanity set --- \$575. Expect to pay a few hundred dollars for a roundlet made from precious metals. More utilitarian examples start at about \$40. Photo courtesy of Vintage Antiques.

wine-related items, corkscrews quickly proved to be his bestseller.

"I've been buying and selling corkscrews for over 20 years," said Walters, "and yet I still discover ones that I've never seen before. The same holds true for most other corkscrew collectors. This is definitely one hobby where tenacity pays off, and the thrill of the hunt is often rewarded with yet another example to add to your collection.

"A number of factors contribute to corkscrews having appeal to collectors. For some, it's clever mechanical design or its use as an advertising/promotional item. For others, it may be the appeal of fine craftsmanship as seen in many examples of 18th- and early 19th-century European silver or gold corkscrews. Many of these would have been handmade.

"Craftsmanship, design, and beauty could also influence the appeal of beautifully carved ivory or stag handled corkscrews --- carved in a myriad of motifs such as animals, floral designs, or simply decorative.

Others collect only figural corkscrews. For example, someone with an affinity for dogs, cats, or horses might collect those figural representations in the form of corkscrews."

As for the future of this niche collectible? "I don't have a crystal ball, but I believe that when a field of intrinsically valuable collectibles establishes itself, it will continue to grow in interest," said Walters. "From the time I began selling corkscrews in 1983, there were two clubs for collecting them: the ICCA, which was exclusive to 50 members, and the CCCC (Canadian Corkscrew Collectors Club), which had fewer than 100 members.

"Today the ICCA (voluntarily) remains the same, yet the CCCC has grown to nearly 300 members. There are several regional corkscrew collecting clubs in the U.S., the U.K., France, Germany, Italy, Scandinavia, and Australia. These clubs are continuing to grow, and prices for the more desirable corkscrews are continuing to rise.

“I believe a contributing factor is that today’s society has demonstrated an increased appreciation for the fine food and fine wine. What better way to transfer that interest, than to collect items associated with them?”

Collector Alert

As the values of corkscrews go up, so do the number of fakes. Noted expert and author Donald Bull’s Web site offers some images of new corkscrews being sold on the Internet as old. Visit www.bullworks.net/daily/gallery.htm.

Gay Nineties legs, German patent 21718 (Steinfeld & Reiner 1894), were reproduced in the 1970’s without intention to deceive, and were made with plastic thighs, and marked GERMANY. The early corkscrews have celluloid scales on the legs. The reproduced are often offered as vintage, and the plastic may be described as Bakelite.

The CCC community also alerts members about fakes on the market. In addition, eBay sellers with a history of listing fakes are exposed.

Did you know?

- A corkscrew collector is known as a helixophile.
- The screw part of the corkscrew is called a worm.
- The button on a Henshall corkscrew (the first patent) bears the Latin inscription “Obstando Pro-moves (by standing firm one makes advancement) Soho Patent” (Refers to Matthew Boulton, Soho, a factory on the outskirts of Birmingham, England; Matthew Boulton was one of the most famous industrial entrepreneurs of the time.)

- The first American corkscrew patent was issued in 1851. Since that time, more than 1,000 patents have been issued in the United States alone.
- Information such as patent date, manufacturer’s name, advertiser’s logo, or name of design is sometimes printed, stamped, raised, or etched on the corkscrew. When this information is missing, the corkscrew’s value is reduced.
- Prior to the invention of the Crown bottle cap in the 1890s, corks were used to seal bottles of beer, liquor, oil, medicine, and perfume.
- The McKinley Tariff act of 1890 (which required country of origin to be shown on any item imported to the U.S. after 1891) and its revision in 1914 (which required the addition of the words “made in”) can provide clues to dating imported corkscrews.

- Condition is important: Damaged, chipped, cracked, missing, or broken parts significantly will reduce value.

Corkscrew categories

Within each category, there are countless styles, modifications, and corkscrew patents.

Direct pull: The simplest design and the most difficult to use. A t-shaped, bow, or looped “finger pull” handle is attached to the worm. Insert and pull --- hard. The direct pull is also found on folding knives.

Assisted pull: The direct pull made a bit easier with the addition of a spring mechanism or a button or cap that covers or grips the top of the cork.

Leverage: This category has three basic variations --- single lever (such as the type that waiters use in restaurants), double lever (the common wing type), and



Left: An important American patent by Philos Blake in 1860, the handle of this all steel corkscrew is marked with its patent date of “MARCH 27-60.” A rare example, this corkscrew is valued in the five-figure range. Photo courtesy of Vintage Antiques.

Right: Rare and desirable “coffee grinder” corkscrew, made in Paris by Jacques Perille, and listed in its catalog as “Manivelle.” First patented in 1875, this example dates to the early 20th century. Photo courtesy of Vintage Antiques.

compound lever (zigzag pattern).

Torque: "Self-puller" torque corkscrews use a handle that turns, twisting the worm into the cork. A double-action torque will have a second handle to extract the cork.

Advertising: Used as promotional items for a variety of businesses and products, value is often determined by the name brand or crossover appeal.

Pocket: A travel corkscrew that is small. The worm is usually enclosed in a case to protect the pocket. Most are direct pulls, with the case or cover doing double duty as a handle.

Novelty: Designed to be fun and functional (to varying degrees), novelty corkscrews can be found in creative shapes, such as a pair of lady's legs, or of the figural variety, such as animals or people such as golfers and chefs.

Additional resources for collectors

- Vintage Antiques, www.vintage-antiques.com, Dean Walters, P.O. Box 717, San Anselmo, CA 94979. (415) 459-6393. dean_w@pacbell.net
- Christie's, www.christies.com, South Kensington, Dennis Cox, 85 Old Brompton Road, London SW7 3LD +44 (0)20 7930 6074 dcox@Christies.com.

Books

- *Boxes Full of Corkscrews* by Donald Bull (Schiffer, 2001).
- *Collectible Corkscrews* by Frederique Crestin-Billet (Flammarion, 2001).
- *Miller's Corkscrews & Wine Antiques* by Phil Ellis (Mitchell Beazley, 2001).
- *Corkscrews: 1,000 Patented Ways to Open a Bottle* by Fred O'Leary (Schiffer, 2000).
- *Bull's Pocket Guide to Cork-*

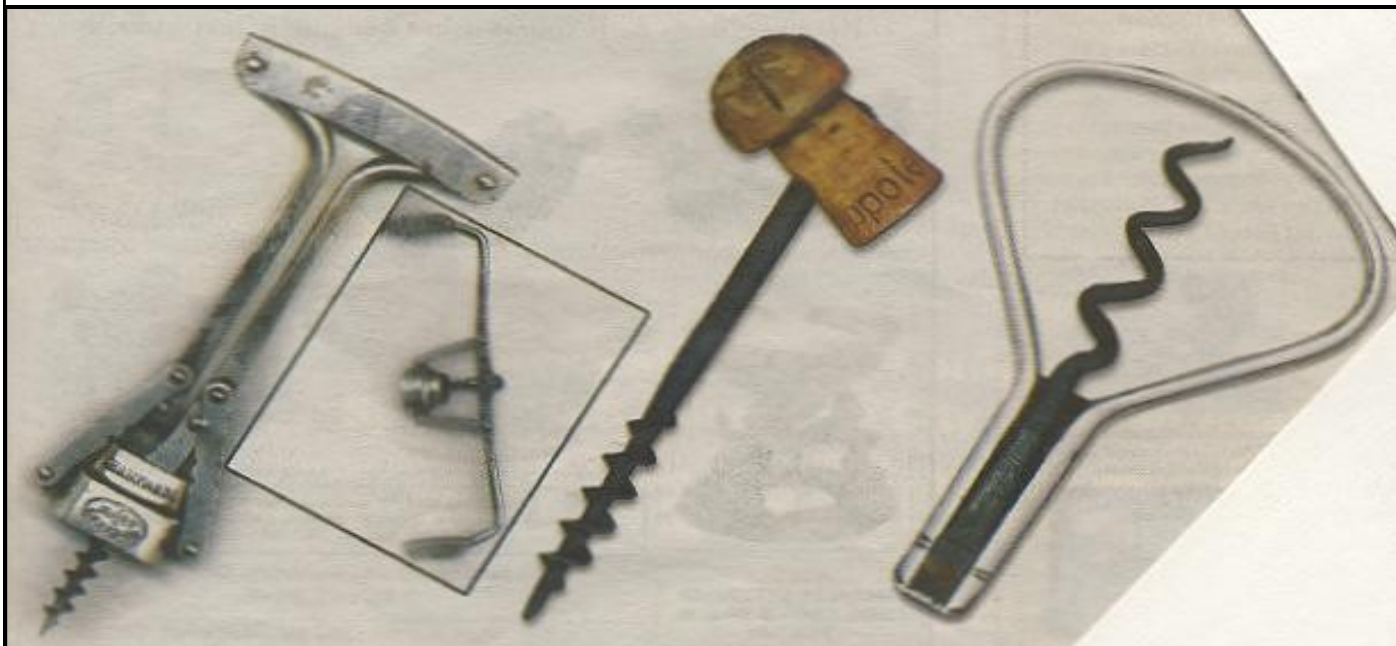
screws by Donald Bull (Schiffer, 1999).

- *The Ultimate Corkscrew Book* by Donald Bull (Schiffer, 1999).

Clubs

The Canadian Corkscrew Collectors Club (CCCC),

www.bullworks.net/virtual/cccc/home.htm. Founded in Waterloo, Ontario, in 1981, the club now has members from 16 countries. Membership is open to dealers and collectors (beginner to advanced) of corkscrews. The annual fee of \$30 also includes a subscription to The Quarterly Worm, The CCCC has an annual meeting; in 2005, it was held on a cruise ship from Vancouver, British Columbia, to Anchorage, Alaska. In 2006, the meeting will be held in Sydney, Australia. For more information, contact CCCC, Milt Becker, Membership Chairman, One Madison Street (5B), East Rutherford, NJ 07073. ccccdues@aol.com.



Left, this double-lever corkscrew, circa 1900, is a French version of the 1903 English patent by George Hausmann. This French advertising version for Moët & Chandon, is slightly larger than the English version, which is usually marked "Goliath" or "Geha." It is valued at \$1,000. Photo courtesy of Vintage Antiques.

Middle, this champagne corkscrew was patented in England (No. 7431) in 1888 by Hugh McBridges. It sold for 192 British Pounds Sterling (approximately \$330) at Christie's auction in November.

Right, the bow corkscrew has a worm that folds out from the center with the bow becoming the handle. Hundreds of handle shapes and overall sizes have been produced since the 18th century. Prices start from as little as \$10 to several thousand dollars. This example is silver, dates to the late 18th to early 19th century, and is marked Singleton. It realized 2,400 pounds (approximately \$4,165) at Christie's November auction. Christies photos courtesy of Christies Images Ltd. 2005.

New Discoveries to the 2005 Handbook II

A-79 BALLOON
 TAB LIFTER
 MARKED "OFFICIAL PRODUCT IN 'EAGLE IN A' LOGO"
 2 1/8"
 JOHN STANLEY
 1. BUDWEISER (IN BOWTIE)



A-79

G-84
 CAP LIFTER
 3 3/8"
 BILL MCKIENZIE
 1. WANO CO. DIST. OF COORS (PIC OF COORS TRUCK)



G-84

G-85
 CAP LIFTER
 2 9/16"
 MIKE KREJCI
 1. BUD LIGHT B L GAME TIME / YANKEES (IN BASE-BALL LOGO)



G-85

A-80 SHIRT
 3"
 BEN HOFFMAN/MIKE KREJCI
 1. BUDWEISER OFFICIAL BEER OF (PIC OF LION) THE F. A. PREMIER LEAGUE / BUDWEISER 06



A-80

C-66
 CAP LIFTER
 5"
 MARC BENJAMIN
 1. ATLANTIC BREWING COMPANY BAR HARBOR, MAINE



C-66



G-86



Q-95

G-86
CAP LIFTER
3 1/8"

MIKE KREJCI

1. STEVENS POINT BREWERY NICHOLAS C. POINT (PIC OF POINTED HEAD MAN)

Q-95

CAP LIFTER/TAB LIFTER

- CAP LIFTER HAS METAL SUPOORT (SEE Q-18)
MARKED "EVANS MFG SA CA 92704 PAT. 4,864,898"
2 5/8"

MIKE KREJCI

1. MILLER LITE TRUE PILSNER (IN LOGO) 2 RUSTY WALLACE / LIVE RESPONSIBLY MILLER (IN LOGO) @2004 MILLER BREWING CO., MILWAUKEE, WI.

Left to Right:
John Mlady,
Bob Post,
Ollie Hibbeler
Cornhusker Show
Sept,
2005



January New Members, Renewals, Address Changes & Corrections
Just For Openers Current Members: 256 (New Member Numbers 1078-1086)

#	Last Name	First	Spouse	Street	City	St	Zip	Phone	E-Mail	Opener Specialties
1083	Cannon	Keith	Roxie (Dog)	1135 Julius Dr	Salisbury	NC	28147-8643	704-636-2686	casey28@carolina.rr.com	Pepsi-Cola Openers & Wall Mount Soda (John Stanley)
1082	English	Charlie	Kathy	PO Box 94	Taftsville	VT	05073-0094	802-457-9172		Bottle & Can Openers, mostly Northeast & Midwest (Cymba Inc)
853	Jacobsmyer	Ed	Ginger	1629 Chelsea Rd (Address Change)	Palos Verdes Estates	CA	90274-1822	323-931-1745	ejacobsmeyer@mjournal.com	Beer Openers
449	Luchsinger	Paul	Anne	2815 King Rook Rd (Address Change)	Williamsburg	VA	23185-3237	757-345-3984	paulcork@cox.net	Early U.S. Patented Corkscrews & Syroco Co.
1085	Merchie	James		PO Box 451	Stockton	IA	52769-0451			US Beer, Soda, Can Openers & Corkscrews (eBay Auction)
1086	Mosier	Bob	Doris	17424 Jordan Dr	Saegertown	PA	16433-4856	814-763-4819	dmosier@griswoldcookware.com	Cast Iron Figurals & Griswold Cookware (JFO WWW)
544	Newbold	Richard		1243 Hyman Ave	Bay Shore	NY	11706-5340	631-224-7618	neodingo@aol.com	General (Rejoin 1990)
1079	Olson	Matthew (Matt)	Laura	577 Greendale Dr	Janesville	WI	53546-1944	608-752-8411	daddymolson@hotmail.com	US Beer, Types, Canadian esp Molson (Russ Adler)
1084	Teeter	Mike		833 Washtenaw St NE	Grand Rapids	MI	49505-4845	616-363-3358	mdteeter@comcast.net	General, US Beer, Can, Wall Mount Openers (JFO WWW)
1080	Thole	Greg	Deb	224 Broadmoor Ln	Rotonda West	FL	33947-1903	941-697-2298		Miscellaneous esp Michigan Openers (Cymba Inc)
1081	Trickey	Harold		11132 N 165th East Ave	Owasso	OK	74055-6025	918-371-9311	salexa2088@aol.com	General (JFO WWW)

**JANUARY 2006 ADDITIONS & CORRECTIONS TO 2005 HANDBOOK
(COPYRIGHT JANUARY 2006 JOHN STANLEY)**

A-1

- 109. COUNTRY CLUB HESS MERCANTILE CO.
- 110. OLD STYLE MALT EXTRACT
- 111. MATH PITZEL BREWERY NEW MUNICH, MINN.
- 112. PIONEER MALT EXTRACT CO. 1869 MILWAUKEE AVE.
- 113. STONE MALT CO. YOUNGSTOWN, OHIO.

A-1 CORRECTIONS

- 6. FINK BREWING CO. HARRISBURG, U.S.A. (2 VAR (A) WORDING MIDDLE OF OPENER ONLY (B) WORDING ACROSS ALL OF OPENER) (06,339)
- 75. FINK BREWING COMPANY HARRISBURG, U.S.A. (2 VAR (A) WORDING MIDDLE OF OPENER ONLY (B) WORDING ACROSS ALL OF OPENER) (06,339)

A-2

- 5. KEG & BOTTLE BLATZ HARRY'S PLACE
- 6. UNION BEV. CO. PH. 222 BUDWEISER & F. & S.

A-3

- 57. ALBANY MALT CO. 99 HAMILTON ST, ALBANY, N.Y.
- 58. DOG GONE GOOD JIFFY MALT ED M. LIEBLEIN DISTR

A-4

- 68. PETE CONNER "SCHLITZ" BEER 1881 SHELBY ST. INDIANAPOLIS IND.

A-5

- 128. COMPLIMENTS OF AIRPLANE MALT CO. 3258 MICHIGAN AVE. DETROIT
- 129. P. BIANCHINI KEYS MADE, MALT, SAWS FILED, BARRELS, GLOBES, PAINT BOTTLES 718 COLUMBUS AVE.
- 130. KENT'S HARDWARE KENT'S MALT STORE 250-3RD. ST. PHONE DOUGLAS 8249
- 131. M. SILVER'S FEED STORE MALT, HOPS & SUPPLIES 2651 CANIFF LONGFELLOW 3515
- 132. WEST SIDE MALT STORE 14 SO. WESTERN AVE. DAYTON, O. PHONE: AD-0639

A-13

- 33. BRADFORD SELECT, EXPORT & OLD LAGER, BRADFORD BREWING CO. BRADFORD, PA.

A-16

- 18. THE HUBERT FISCHER BREWERY HARTFORD, CONN.

A-21

- 145. COR-BETTA ICE CREAM BLATZ BEER DENVER, COLO.
- 146. MILLER HIGH LIFE HAMMS CENTRAL DISTRIBUTING COMPANY HUTCHINSON, KANSAS
- 147. PABST BLUE RIBBON FALSTAFF BEER RALPH NIECE TEL. 254-GREELEY
- 148. PRIMO THE PREMIER BEER HAWAII'S BREW
- 149. SCHLITZ & FALSTAFF BURTON BEVERAGE CHARITON, IA.

A-28

- 63. DRINK GOLDEN BREW CLAIRTON BREWING CO.
- 64. N. DENNIS BOTTLER OF POTH'S EXTRA BEER S. E. COR. 10TH & POPLAR, PHONE POPLAR 6407
- 65. SCHLITZ / BISBEE BEER CO. AGENTS
- 66. WALD-ROSE WORLD'S BEST MALT EVERYTHING FOR THE HOME BREWER STORES EVERYWHERE 218 FLAT-BUSH AVE. BROOKLYN, N. Y.

A-29

- 110. GEO. BLACK MALT & HOPS AND SUPPLIES 11710 KERCHEVAL AVE. LENOX-2729
- 111. MANNINGS MALT HOUSE MAIN 2518 422 SPRAGUE AVE. SPOKANE
- 112. CALL WM. BROE FOR "MASTERBRU" PHONE EDGEWOOD 3799 2700 E. LAFAYETTE
- 113. F. C. ROCHE & SONS CHAIN STORES CHOICE MALT AND HOPS 12605 WOODROW WILSON AVE. 15120 WYOMING AVENUE PHONES LONGFELLOW 5312 HOGARTH 0364

A-35

- 55. DRINK PEARL BEER

A-48

- 1. LITE (GOLD ON BLUE) (ADD COLOR VAR #909)

A-52

- 7. PABST SPECIALTY SHOP 607 1/2 PIKE ST. BOTTLERS SUPPLY MAIN 2276 - FREE DEL.

A-58

- 13. COORS LIGHT COORS LIGHT THE ROCKY MOUNTAIN HIGH A TASTE BORN (PIC OF WATERFALL)

B-5

- 49. COMPLIMENTS OF GAMBRINUS BREWING CO. PORTLAND, ORE.
- 50. HOWELL & KING CO. PERFECTION BEER PITTSTON, PA.
- 51. LOS ANGELES BREWING CO'S HIGH GRADE PRODUCTS / BOHEMIAN MALTO MISSION MALT TONIC

B-13

- 135. EVAN'S ALE H. M. FITZ
- 136. IF YOU WANT GOOD SODA WATER PHONE GEORGE SCHNEIDER 181-83 STOCKHOLM ST. (SEE E-4-82, E-4-297, E-4-283 & E-4-362)

B-14

- 195. VIRGINIA BREWING CO. DRINK APPLE-O BIRCH-O / VIRGINIA BREWING CO. DRINK IRON-O IRON BOCK

B-18

- 685. ANHEUSER-BUSCH BEER CRETE, NEB. / OLD HOME-STEAD JOS. JELINEK, JR. PROP.
- 686. KEY TO ARIZONA BREWING CO. PRESCOTT - ARIZ.
- 687. COMPLIMENTS BECKER BREWING & MALTING CO.
- 688. CALL FOR "BOHEMIAN" PRESENTED BY GEO. STROBEL
- 689. EASTON MALT & HOP STORE A. TOFF, PROP. 650 NORTHAMPTON ST. TEL. 1006 EASTON, PA.
- 690. HENSLERS / ALE & BEER
- 691. DRINK IRON BREW / MEYER MEINHARDT CO. ST. LOUIS, MO.
- 692. KEY TO KITTANNING -- -- BREWING CO. KITTANNING, PA.
- 693. DRINK PURITY LIQUID MALT / KEY TO GOOD HEALTH

B-19

- 269. DRINK KLINKERT'S BEER
- 270. METZ BROS. BR'G CO. OMAHA'S FAVORITE BEER

B-19 CORRECTIONS

- 36. STAR BREWING COMPANY MINSTER, OHIO (06,852)

B-21

- 612. CALL FOR BISMARCK BEER / COMPLIMENTS OF M. J. HENRY HAVRE DE GRACE, MD.
- 613. FERD EFFINGER'S EXPORT / SCHLEHEN BRAU (2 VAR (A) FERD EFFINGER'S BLOCK LETTERS (B) FERD EFFINGER'S SCRIPT LETTERS)
- 614. HINCHCLIFFE'S LAGER ALES & PORTER PATERSON, N.J. QUALITY FIRST / SAME
- 615. PADUCAH BREWERY CO. INCORPORATED / \$1,000 PURE MALT BEER
- 616. ROCKWOOD BREWING CO. ROCKWOOD, PA. / MOUNTAIN PRIDE BEER

B-21 CORRECTIONS

- 8. THE CLEVELAND & SANDUSKY BREWING CO. SANDUSKY, OHIO. / DRINK CRYSTAL ROCK BEER (2 VAR DRINK CRYSTAL ROCK BEER (A) ON 2 LINES (B) ON 3 LINES) (06,852)

B-23

- 193. AMERICAN FOOD PRODUCTS CO. "EVERYTHING FOR THE BOTTLER" 41 SO. SEMINARY ST. GALESBURG, ILL.
- 194. DRINK THE FINEST (BAY CITY (MI) BREWING)

B-30

- 10. NORTH AMERICAN BREWERY PHONE DIVERSEY 2202 2336 BOSWORTH AVE. CHICAGO, ILL.

B-55

- 32. BUD LIGHT BEER

B-73

- 18. ATLANTIC BREWING CO. BAR HARBOR & PORTLAND MAINE (IN LOGO) AMERICA'S ORIGINAL BLUEBERRY ALE BAR HARBOR BLUEBERRY ALE
- 19. BUD LIGHT
- 20. BUD RACING (PIC OF FLAG)

21. BREWERY FRESH BUDWEISER (SCRIPT) SINCE 1876
 22. (EAGLE IN A) (PIC OF LIZZARD) BUDWEISER (PIC OF LIZZARD)
 23. MICHELOB LIGHT
 24. SCHLAFLY BEER BREWED IN ST. LOUIS
C-11
 47. THE HOME OF XXM MALT / BROOKLYN HOME SUPPLY CO. SHADYSIDE 1622 4424 PEARL RD.
C-13
 331. FELKO SUPPLY CO. 96 FRENCH ST. BRUNSWICK, N. J. / IF ITS BEER OR MALT SEE FELKO
 332. FRANKENMUTH BREWERY / THANK YOU FOR A DOG-GONE-GOOD YEAR
C-18
 27. PABST BLUE RIBBON BEER & ALE O'KEEFE'S CANADIAN ALE & BEER
C-49
 37. SAMUEL ADAMS (WHITE ON BLUE VINYL)
 38. THE CREW BREW WORKS (AROUND LOGO) AND ON THE EIGHTH DAY...MAN CREATED BEER! (PITTSBURGH PA MICRO) (BLUE & WHITE ON STEEL)
 39. COORS (2 VAR (A) BLACK ON GOLD (B) YELLOW ON GOLD)
 40. COORS LIGHT RACING (PIC OF CHECKERED FLAG) (BLACK ON STEEL)
 41. GRAIN BELT (IN BOTTLE CAP LOGO) PREMIUM WWW.GRAINBELT.COM (RED ON STEEL)
 42. MICHELOB LIGHT / MAX GOLF CLASSIC (IN SHIELD)
 43. MILLER GENUINE DRAFT COLD FILTERED DRAFT BEER (IN LOGO)
 44. MILLER GOOD CALL. (RED & WHITE ON BLACK VINYL)
 45. MILLER LITE TRUE PILSNER BEER (3 VAR (A) BLUE ON STEEL (B) BLUE, RED, WHITE & YELLOW ON STEEL (C) WHITE ON BLUE VINYL)
 46. NATIONAL BOHEMIAN BEER (PIC OF MR. BOH) / SAME (WHITE ON RED VINYL)
 47. NEW BELGIUM BREWING (GLASS OF BEER) BEER RANGER (GLASS OF BEER) / (BEER GLASS) PROTECTING BEER PERFECTION TIPS STORE BEER COLD 38*-50*F HAVE TAPS & LINES CLEANED EVERY 2 WEEKS INSPECT & SMELL GLASSWARE FOR CLEANLINESS SERVE BEER COOL 40*-BLUE PADDLE 45*-FAT TIRE & SUNSHINE 50*-ABBEY & TRIPPEL FOAM IS GOOD; AIM FOR 2 FINGERS PRESENT WITH FLAIR 1-888-622-4044 (SPINNER CYMBA INC. U. S. A.)
 48. PABST (BLUE ON STEEL)
 49. PABST BLUE RIBBON BEER (BLUE RIBBON LOGO) (2 VAR (A) HORIZONTAL LOGO (B) VERTICAL LOGO) (BLUE ON STEEL)
 50. ROLLING ROCK (GREEN ON STEEL)
 51. AUGUST SCHELL BREWING CO. WWW.SCHELLSBREWERY.COM (BLUE ON STEEL)
 52. STOUTD'S BREWERY WORLD CLASS LOCALLY BREWED ADAMSTOWN, PA (CO-RECT STAINLESS STEEL INDIA)
 53. SUMMIT BREWING CO. (IN LOGO) (GREEN & WHITE ON STEEL)
C-52
 4. CELEBRATING 125 YEARS HONESTLY FRESH STRAUB BEER & LIGHT SINCE 1872 ST. MARY'S, PA / PCC PRECISION COMPACTED COMPONENTS
C-56
 2. BUD LIGHT
E-2
 35. THE CITY BREWING CO. TOLEDO O. / SAME
 36. MAIER BREWING CO. LOS ANGELES CALIF. / DRINK MAIER SELECT THE BEST BEVERAGE
E-4
 377. AMERICAN BEVERAGE CO. / IT'S TANGEE GINGER ALE
 378. KOCH BEVERAGE CO. WAPOKANETA, O. / DRINK LITTLE DUTCH
E-5
 137. FRIENDLY GRAIN BELT OBERLE DISTRIBUTING CO. FAIRMONT, MINN.
 138. GRAIN BELT - CITY CLUB COMPLIMENTS PIERRE BOTTLING WORKS JOHN P. POTTER PIERRE, S. DAK.
 139. GRAIN BELT (IN DIAMOND OVER BOTTLE CAP) JUST TO SAY THANK YOU NORRIS GAFT FOLEY, MINNESOTA PHONE 19
 140. DISTRIBUTOR OF HAMM'S BEER SMOOTH - MELLOW A. P. FITZER LUVERNE, MINN.
E-6
 230. KEY TO KEYSTONE BEER / KEYSTONE MFG. & SALES MILLVALE, PA.
E-7
 97. CLEVELAND & SANDUSKY BREWING CO. / DRINK GOLD - BOND ALWAYS
 98. NEW YORK SPECIAL BREW / CRYSTAL ROCK DISTRIBUTING CO. PHONE - WHEELING 434
 99. RUBSAM & HORMANN STAPELTON, S. I. N. Y. / R & H PILSNER R & H WURZBURGER
E-8
 128. CHATTANOOGA BRG. CO. IMPERIAL PILSENER. / ZACHERL BRAU MAGNOLIA.
 129. GERMANIA BREWING CO. DANVILLE, PA. / SAME
E-9
 147. SPRATTLER & MENNEL PATERSON, N. J. / SAME
E-19
 8. AMERICAN BREWING CO. NEW ORLEANS DRINK REGAL LAGER BEER NO. 550 (SQUARE TOP) (BLACK ON GREEN) (BLACK ON NATURAL) (BLACK ON RED)
F-2
 64. BUDWEISER & JAX
 65. CANADIAN BRAND MALT SYRUP
 66. COMPLIMENTS OF SOUTH PHILADELPHIA MALT CO. / S. E. COR. 12TH & CARPENTER STS.
F-5
 50. EAST SIDE FOOD PRODUCTS CO. MALT, HOPS & SUPPLIES / 2224 FEDERAL ST., CAMDEN, N. J. FREE DELIVERY OPEN EVENINGS BELL PHONE CAMDEN 607
 51. STONE MALT CO. 215 LINCOLN WAY WEST / OUR VERY BEST HOME RULE - RED SUN - SAMBO SANDOW - "39" MALT
 52. STONE MALT CO. 333 W. FEDERAL ST. - 1317 MARKET ST. / OUR VERY BEST HOME RULE - RED SUN - SAMBO SANDOW - "39" MALT
F-6
 125. BETHLEHEM MALT & HOP STORE - PHONE - 3917 / 515 E. 3RD ST. BETHLEHEM, PA.
 126. BUFFALO BREWING CO. / TRY A CASE OF BELLWEISER BEER BOTTLED AT THE BREWERY.
 127. KRANTZ OLD DUTCH BEER TOLEDO, OHIO. / HEALTH AND GOOD CHEER IN EVERY BOTTLE.
 128. THE STARK-TUSCARAWAS COMPANY / TUSCORNA PHONE 690
 129. DRINK WOOLNER'S BEVERAGES TOLEDO - PHONES 199 / SAME
F-7
 13. V. KACZMARCZYK DISTRIBUTOR OF KAIER'S BEER AND PORTER 1125 EAST PINE ST. PHONE 387 MAHANAY CITY, PA. (IN LOGO PLEASING YOU PLEASES US)
 14. LIQUORS - STAG ON DRAUGHT FINE WINES MACK'S TAVERN 2617 STATE ST., ALTON, ILL. PHONE 3-9771 (IN GIRL HOLDING MUG LOGO MEET ME AT)
F-15
 18. OLD EXPORT DIST. CHAS. E. SCHULTZ FROSTBURG, MD. PH. 111
F-16
 4. CRAWFORD MALT EXTRACT CO. CHICAGO, ILL. / PHONE: LAWDALE 4370
F-26
 3. LORENZO'S MALT-HOPS-SUPPLIES / LORENZO'S MALT STORE 894 WATER ST. (2 VAR (A) LORENZO'S ONE

LINE BESIDE MALT STORE 894 WATER ST (B)
LORENZO'S ON SAME LINE WITH MALT STORE)

F-32

- 5. NEW BRAUNFELS BREWING CO. / DRINK BUSTO.

G-35

- 16. YUENGLING (BLUE ON YELLOW) (RED ON WHITE)
(WHITE ON RED) (ADD COLOR VARS #572)

G-36

- 5. MILLER GENUINE DRAFT COLD FILTERED MILLER
AMERICA'S QUALITY BEER (IN EAGLE LOGO) (ON
MAIN LABEL) GENUINE DRAFT (ON NECK LABEL)

G-47

- 24. THE JOSEPH HUBER BREWING CO., INC. SINCE 1845
WWW.HUBERBREWERY.COM (YELLOW ON BLACK)

- 25. AUGUST SCHELL SINCE 1860 (PIC OF BUCK) AUGUST
SCHELL NEW ULM, MINNESOTA (IN A S CIRCLE
LOGO) (WHITE ON BLACK) (WHITE ON DARK BLUE)
(WHITE ON LIGHT BLUE) (WHITE ON DARK GREEN)
(WHITE ON LIGHT GREEN)

G-48

- 49. DUNEDIN BREWERY
- 50. PETE'S WICKED (PURPLE & WHITE ON BLACK)

G-51

- 8. MILLER LITE MILLER LITE (WHITE ON BLUE)

G-56

- 3. HOLY COW CASINO CAFÉ BREWERY LAS VEGAS (PIC
OF A COW HEAD)

G-67

- 2. LATROBE BREWING CO. LATROBE, PA. ROLLING ROCK
EXTRA PALE PREMIUM BEER (IN LOGO) @ 1939

G-68

- 4. BUDWEISER (IN BOWTIE) KING OF BEERS

H-1

- 53. KUTZTOWN BOTTLING WORKS OWN MADE SOFT DRINKS
DISTRIBUTOR BEER, ALE, PORTER

H-2

- 217. STEGMAIER W-BARRE TEL. 2-8171 SCRANTON TEL.
4-1157

- 218. WENTZLER'S CREAM TOP

H-2 CORRECTIONS

- 3. ATLANTIC ALE AND BEER (2 VAR ALE AND BEER (A)
ON 3 LINES (B) ON 1 LINE) (06,852)

J-1

- 25. PABST BLUE RIBBON

K-5

- 12. GENESEE BEER (DECAL ON BLACK BASE)

K-10

- 3. SCHLITZ (ON WESTERN HEMISPHERE)

L-4

- 82. GETTELMAN RATHSKELLER BREW (GETTELMAN BREWING
CO MILWAUKEE, WI)

L-12

- 3. MILLER GENUINE DRAFT (STANDARD BOTTLE LABEL
AND NECK LABEL)
- 4. MILLER LITE (STANDARD BOTTLE LABEL) MILLER
LITE READY TO (ON NECK LABEL)
- 5. PABST BLUE RIBBON BEER (STANDARD BOTTLE LABEL
AND NECK LABEL)

L-14

- 18. MICHELOB GOLDEN DRAFT BEER (ON LABEL & NECK
LABEL)

L-16

- 6. ATLANTIC BREWING COMPANY BAR HARBOR MAINE
- 7. LEINENKUGELS BALLYARD BREWERY (PIC OF CROSSED
BATS WITH BALL (A DIAMOND BACKS ON BALL))

M-3

- 46. SCHEIDER'S GINGER ALE / BROOKLYN, N.Y. /
GRAND PRIZES ITALY - FRANCE BELGIUM ENGLAND -
IRELAND / "SERVING TWO GENERATIONS" (BLACK)
(SEE E-4-82, E-4-297, E-4-283 & E-4-362)

M-23

- 15. DREWRY'S BALLANTINE LOWENBRAU / R. J. DIST.
CO. PEORIA, ILL.

M-29

- 105. WARNING! WILL OPEN FALSTAFF ONLY!! MERRY
CHRISTMAS!!
- 106. HAMM'S THE BEER REFRESHING! (IN BOX LOGO)
VIC'S TAVERN PACKAGE LIQUORS PHONE 196 DE
PUE, ILL.
- 107. MILLER HIGH LIFE (IN RED BOWTIE LOGO) MURDACH
DISTRIBUTING CO. PHONE 7265 CENTRALIA, ILLI-
NOIS "MILLER HIGH LIFE AND STERLING BEERS"

M-30

- 159. BUDWEISER KING OF BEERS (IN BOWTIE)
ALBRECHT'S CAFÉ FOOD-LIQUOR-BEER PHONE 364-
2177 DAVENPORT, NEBR.
- 160. BUDWEISER ON TAP HALEY'S TAVERN WINES & LIQ-
UOR JENNINGS, MO. 63136
- 161. FALSTAFF (IN SHIELD) FALSTAFF BEER DISTRIBUT-
ING CO. P. O. BOX 338 BOERNE, TEXAS PHONE
#249-2212
- 162. THE PIT STOP COME IN AND MEET AL & TED HAMM'S
ON TAP - PIZZA - HAM SANDWICHES 1724 SO. FED.
MASON CITY, IA.
- 163. SCHLITZ (IN BOX LOGO) ROGER'S PLACE BEER-
SNOOKER-CARDS ALCESTER, SOUTH DAKOTA
- 164. STROH'S LEROY E. DUKE DISTRIBUTOR 127-135
BEAVER ST. LANCASTER, PA. PH. 393-2216

M-33

- 9. COWAN DISTRIBUTING CO. BUDWEISER - BUSCH BA-
VARIAN

M-41

- 4. DRINK JAX BEER

M-50

- 5. DISTRIBUTOR HAMM'S BEER COOK BEVERAGE CO.
FARIBAULT, MINN.

M-60

- 10. STAG BEER ST. JOHN'S DISTRIBUTING CO. 3323
MARSHALL AVE. WABASH 499

M-64

- 6. BUDWEISER LAGER BEER / (EAGLE IN A)

M-70

- 9. (EAGLE IN A) BUDWEISER (IN BOWTIE LOGO) KING
OF BEERS (RED ON WHITE)

M-74

- 6. COMPLIMENTS OF BREUNIG'S LAGER
- 7. CUE INN SCHLITZ-NORTH SIDE OF FONTANELLE,
IOWA

M-83

- 36. ORIGINAL PABST BLUE RIBBON (IN LOGO) A.H.
JONES DIST. CO., INC. 1313A INDUSTRIAL DRIVE
JEFFERSON CITY, MO 65101 (314) 635-4388

M-89

- 10. HANDY BOTTLE OPENER FOR BUDWEISER H. W. HER-
RELL DIST. CO. IMPERIAL, MO. PHONE - IMPERIAL
2441

M-136

- 2. LEMP BEER EST. 1840 (3 1/4" LONG)

M-138

- 2. BUDWEISER (NO BOWTIE)

M-141

- 2. ORIGINAL COORS RODEO (PIC OF BUCKING HORSE) /
SAME
- 3. AUGUST SCHELL SINCE 1860 (PIC OF BUCK) AUGUST
SCHELL NEW ULM, MINNESOTA (IN A S CIRCLE
LOGO)

M-147

- 2. MGD GENUINE DRAFT HARLEY-DAVIDSON MOTOR
CYCLES / SAME

N-22

- 14. DRINK ATLAS BEER

N-23

- 9. IRON CITY BEER (IN LOGO) PUMP AN IRON

N-27

- 20. BUSCH BAVARIAN BEER SKEFF DIST. CO., INC.
DECATUR, ILL.

21. HAMM'S BEER
 22. TO A GOOD SPORTSMAN FROM LITCHFIELD BOTTLING WORKS HAMM'S BEER LITCHFIELD, MINN.
N-35
 16. FROM YOUR FALSTAFF DISTRIBUTOR
 17. DRINK REGAL BEER / ALLISON DISTRIBUTING CO. WHARTON, TEX. - TEL. 986
N-36
 6. NARRAGANSETT BREWING CO. (KNIFE IS 1" SHORTER)
 7. NARRAGANSETT BREWING CO. CRANSTON, R. I.
 8. NARRAGANSETT NARRAGANSETT BREWING CO.
 9. SCHAEFER (IN LOGO) 1967 SAFETY AWARD
N-39
 10. PEARL LAGER BEER THE GEM OF FINE BEERS (IN LOGO) PEARL BEER DISTR. CO. MANUEL LEHRMANN GR 6-5227, BRENHAM, TEXAS
N-40
 36. COORS (MOUNTAIN SCENE) (OPENER IN CENTER)
 37. DOGFISH HEAD (PIC OF FISH) CRAFT ALES (OPENER BOTTOM SIDE)
 38. DOGFISH HEAD (PIC OF FISH) CRAFT BREWED ALES (OPENER LEFT SIDE)
 39. PURE STERLING BEER
N-43
 9. SCHLITZ & HAMM BEER FLYNN BEVERAGE CO.
N-56
 32. GLUEK'S-NESBITT'S MTKA. BEV. CO. C. C. MILLER
 33. LONE STAR BEER / IT'S CERTIFIED
N-90
 4. (EAGLE IN A) PROUD TO BE SAFE
N-111
 2. EDELWEISS LIGHT BEER CHICAGO 8, ILLINOIS
O-2
 24. BLUE RIBBON AND FOX DELUXE BEERS DON PEASE CO.
O-5
 53. GRAIN BELT BEER (IN LOGO) (PAINTED RED NOT RAISED LETTERS)
 54. LEINENKUGEL'S JACOB LEINENKUGEL BREWING COMPANY CHIPPEWA FALLS, WISCONSIN (PAINTED BLACK NOT RAISED LETTERS)
 55. AUGUST SCHELL BREWING CO. NEW ULM, MINNESOTA (PAINTED BLUE NOT RAISED LETTERS)
O-8
 23. THE RENNER PRODUCTS CO. BEVERAGES AKRON, O.
O-19
 4. DRINK WOOLNER'S PURE BEVERAGES THE WOOLNER B'R'G. CO. TOLEDO, O.
O-22
 3. PABST MILWAUKEE (IN B LOGO) BLUE RIBBON (ALL TEXT IN RIBBON LOGO) PAT. 6-18-12
P-7
 59. JOHN L. SIMLER WHOLESALE WINES & LIQUORS GOENNER-PITTSBURGH & EMMERLING BEERS BELL PHONE 52 CONEMAUGH, PA CITY PHONE 4034
 60. COMPLIMENTS OF A. W. STEPHENS MFG. CO., WALTHAM (THE WATCH CITY) MASS. MAKERS OF THE <PICNIC> CROWN BOTTLE OPENER-(PIC OF B-18 OPENER LIFTING CAP FROM BOTTLE) CALL FOR SCHLITZ (SCRIPT) THE BEER THAT MADE MILWAUKEE FAMOUS THE PICNIC IS FOR THE POCKET THIS COMBINATION IS FOR THE HOME THEY ARE TWO GOOD MEMORY FIXERS
 61. ON SALE EVERYWHERE UREEKA BEVERAGE CO. BOSTON, MASS. "EVERYBODY'S DRINK" UREEKA THE GREAT SAAZER HOP TEMPERANCE BEVERAGE
P-8
 233. JAC. BETZ BREWING CO. WALLA WALLA, WASH. / SAME
 234. F. W. COOK BREWING CO. EVANSVILLE, IND. / GOLDBLUME
 235. THE WILLIAM GERST BREWING CO. NASHVILLE, TENN. / SAME
P-8 CORRECTIONS
 43. WAINRIGHT BREWING CO. PITTSBURGH, PA. / SAME (06,587)
P-9
 29. GEO. J. RENNER, BREWER, YOUNGSTOWN, O. / SAME
P-14
 26. GRAIN BELT BEER L. BEAL - INC.
P-19
 123. ROGER ALLEMAN WHOLESALE LIQUOR DEALER MARKET AND SEVENTH STS. SUNBURY, PA. (SEE A-15-68)
 124. ANHEUSER-BUSCH BEER. F. NOTTELMANN, AGENT. WHOLESALE AND RETAILER 107 SOUTH FIRST STREET MONMOUTH, ILL.
 125. BREWERY SALOON, J. C. KRENK, PROPRIETOR FINE WINES, LIQUORS, CIGARS ETC. 700 WASHINGTON STREET VANCOUVER, WASH.
 126. COMPLIMENTS OF JOHN L. MILLER, DEALER IN WINES, LIQUORS AND CIGARS, CELEBRATED CAPE BEER, ALWAYS ON DRAUGHT. 109 INDEPENDENCE ST., CAPE GIRARDEAU, - MO.
 127. HOSTESS BEVERAGES KILLARNEY PALE DRY CROFT ALES GRANADA WINES HAMPDEN BOTTLING CO. TEL. 191 NORTHAMPTON, MASS.
 128. MALTO-HOPO HEALTH BEVERAGE THE SURE TONIC FOR NERVOUSNESS, INSOMNIA, INDIGESTION, "THAT TIRED FEELING" YOUR DRUGGIST HAS IT OR WILL GLADLY GET IT 35C. 65C. AND \$1.25 A BOTTLE
 129. PABST MILWAUKEE BEER. FROHLICH & RIRDLINGER, GALESBURG, ILLS. WHOLESALE LIQUOR DEALERS.
 130. SACHS' FINE MALT BEST FOR MEDICINAL USE.
 131. AGENT FOR SILVER TOP BEER FRANK CAMPBELL, WHOLESALE WINES & LIQUORS 174 CHESTNUT ST., MEADVILLE, PA. MEADVILLE PHONE 137.
 132. COMPLIMENTS OF J. E. GALLAGHER & CO., FAMILY WINE AND LIQUOR STORE, AGENTS FOR STERLING ALE. IPSWICH, - MASS.
P-26
 9. PITTSBURGH BREWING CO. (MOP HANDLES)
P-35
 5. THE SPRINGFIELD BREWING CO. SPRINGFIELD, MASS. EXTRA & TIVOLI LAGER BEER
P-36
 8. PEERLESS BEER LA CROSSE BREWERIES, INC. LA CROSSE, WIS. / SPRING GROVE BOTTLING WORKS SPRING GROVE, MINN.
P-46
 4. BREEN BEVERAGE WHOLESALE OF SCHLITZ BEER
P-51
 72. BUDWEISER CO-OPERATIVE BEER CO., SIOUX CITY, - IOWA / SAME
 73. SCOTCH HOP ALE / DINTENFASS MFG. CO.
P-54
 47. CHAS. E. HAIT, BOTTLERS OF CONGRESS BEER AND BRILLANT ALE. 12 WALL STREET, BINGHAMPTON, N.Y.
 48. COMPLIMENTS OF THE CONSUMERS BREWING CO. NORFOLK, VA .
 49. COMPLIMENTS OF J.C. HELB, WHOLESALE LIQUOR DEALER, AND BOTTLER YORK, PA.
P-55
 12. PHOENIX BREWERY, ST. LOUIS, MO. / SAME
P-57
 32. COMPLIMENTS OF LOS ANGELES BREW. CO., LOS ANGELES, CAL. / SAME
 33. VAN NOSTRAND'S P. B. ALE / BUNKER HILL LAGER
P-60
 6. PARK BREW FOOD PRODUCTS, ALES, LAGER, PORTER, MALT EXTRACT, CHEMISTS FIND THEM CLEAN AND PURE PARK BREW COMPANY, PROVIDENCE, R. I.
P-66
 12. OLD HEIDELBERG BEER / D'AGOSTIN DISTRIBUTING CO.

- P-127**
2. COORS GOLDEN / SAME
- P-133**
2. CRAWFORD MALT EXTRACT CO. INCORPORATED 4018-4038 WEST 24TH ST. PHONE LAWNSDALE 4370 CHICAGO, ILLINOIS
- P-174**
2. BROOKLYN BREWERY (B LOGO) NEW YORK (CURVED SLOTTED HANDLES)
3. AUGUST SCHELL BREWING COMPANY NEW ULM, MN 56073
- P-175**
2. "DRINK BOZEMAN BEER" / SAME
- Q-10**
41. BLATZ-COLT 45-PABST-ANDEKER-LABATT'S KERR BEV. CO.
42. LITE BEER GREAT TASTE...LESS FILLING
43. MILLER (IN LOGO) BOLLN DISTRIBUTING CO.
- Q-11**
31. PREMIUM GRAIN BELT BEER (IN CAP LOGO) (WHITE ON RED)
32. AUGUST SCHELL NEW ULM, MINNESOTA (IN A S CIRCLE LOGO) (WHITE ON BLUE)
- Q-12**
79. AUGUST SCHELL SINCE 1860 (PIC OF BUCK) AUGUST SCHELL NEW ULM, MINNESOTA (IN A S CIRCLE LOGO) (WORDING IS ON OPENER TWICE) (WHITE ON BLUE) (WHITE ON RED)
- Q-18**
118. COORS (PIC OF MOUNTAINS) (RED ON WHITE) (ADD COLOR VAR #852)
226. PABST PBR ME ASAP (WHITE ON BLUE)
227. PREMIUM (PIC OF WHEAT STALK) (RED ON BLACK)
183. SCHELL'S BEER (BLACK ON RED) (BLACK ON ORANGE) (BLACK ON PINK) (BLACK ON WHITE) (BLACK ON YELLOW) (ADD COLOR VAR #909)
228. STOUTD'S BREWERY ADAMSTOWN, PA / WWW.STOUTSBEER.COM (RED & WHITE ON BLACK) (WHITE ON BLACK) (WHITE ON DARK BLUE) (WHITE ON GRAY) (WHITE ON ROYAL BLUE)
- Q-24**
9. STEVENS POINT BREWERY POINT BREWING EXCELLENCE SINCE 1857 (ALL IN LOGO) (GOLD ON RED)
- Q-26**
6. STEVENS POINT BREWERY POINT BREWING EXCELLENCE SINCE 1857 (ALL IN LOGO) (GOLD ON WHITE)
- Q-31**
134. BUDWEISER SELECT (CROWN)
- Q-32**
111. LITE BEER (PIC OF BOWLING BALL AND 4 PINS) (WHITE ON BLUE)
112. MILLER LITE CALIFORNIA PERFECT BEER WEATHER (PIC OF WAVE)
- Q-36**
85. HONEY LIGHT BEER (YELLOW ON RED)
86. POINT PREMIUM ROOT BEER (BROWN ON WHITE)
87. POINT SPECIAL LAGER BEER (BLACK ON BLUE)
88. YUENGLING AMERICA'S OLDEST BREWERY (BLACK & GOLD ON RED)
89. YUENGLING LIGHT LAGER AMERICA'S OLDEST BREWERY (RED ON WHITE)
- Q-47**
2. SCHLITZ (IN LOGO) THE BEER THAT MADE MILWAUKEE FAMOUS (MAROON ON WHITE)
- Q-48**
9. MILLER LITE (IN CIRCLE LOGO) (WHITE ON BLUE)
- Q-56**
3. COORS LIGHT (WHITE ON BLACK)
- Q-62**
4. BUDWEISER (IN BOWTIE) TRUE
- Q-67**
5. MILLER BREWING COMPANY REMINDS YOU TO PLEASE

THINK WHEN YOU DRIVE / MILLER HIGH LIFE (IN LOGO)

Q-80

2. BLUE MOON
3. BUD LIGHT
4. ROCK GREEN LIGHT

Q-84

6. (B CROWN LOGO) TRUE MUSIC KPOW FM POWER 97 (7) CLASSIC ROCK
7. COORS LIGHT
8. MILLER LITE (IN LARGE LOGO) TRUE PILSNER BEER (IN SMALL LOGO) (WHITE ON BROWN)

Q-87

5. NEW GLARUS BREWING CO. DRINK INDIGENOUS

R-24

5. PREMIUM GRAIN BELT (IN LOGO) (WHITE ON RED)

R-29

2. MILLER LITE (IN CIRCLE) TASTES GREAT / SAME

R-36

6. (B LOGO) GAME TIME BUDWEISER

R-45

2. BUD LIGHT

R-51

5. MILLER LITE (IN LOGO) LIVE RESPONSIBLY MILLER (IN LOGO) @ 2005 MILLER BREWING CO. MILWAUKEE, WI / NY JETS (ON FOOTBALL) (RED & WHITE ON BLUE)
6. MILLER LITE TRUE PILSENER BEER (IN LOGO) LIVE RESPONSIBLY MILLER (IN LOGO) @ 2004 MILLER BREWING CO. MILWAUKEE, WI / ESPN (RED & WHITE ON BLUE)

T-2

11. BUD (EAGLE IN A) / SAME

A SINCERE THANK YOU TO THE FOLLOWING DEVOTED COLLECTORS WHO TOOK THE TIME TO SEND THEIR NEW ADDITIONS (UL'S) TO ME TO MAKE THIS LIST POSSIBLE. IT IS GREATLY APPRECIATED BY ALL OF US.

MEMBER NAME & NUMBER (# LISTED)

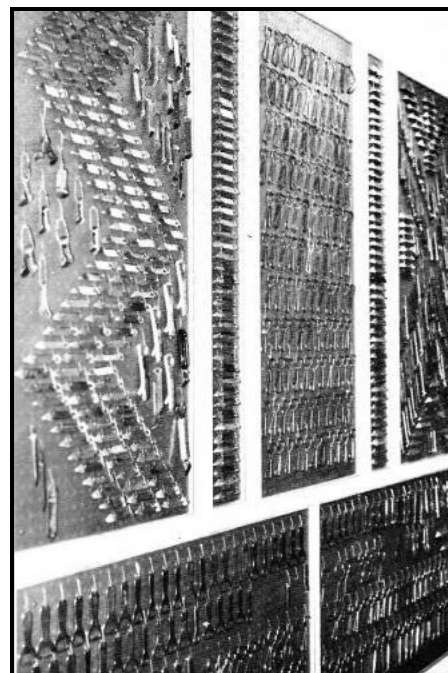
TOM BALANDA JR 1061 (7)
MARK BARREN 406 (1)
GARY BAUER 951 (2)
JOHN BITTERMAN 786 (1)
DON BULL 1 (1)
JOHN BURRUSS III 822 (12)
JOHN CARTWRIGHT 587 (20)
EBAY 0 (36)
JACK FORD 8 (1)
ANTHONY GALIZIA 1042 (1)
TOM GORMALLY 605 (3)
CRAIG GREEN 187 (1)
OLLIE HIBBELER 149 (8)
BEN HOFFMAN 261 (23)
ART JOHNSON 213 (2)
MIKE KREJCI 909 (79)
DAVE LENDY 804 (5)
LARRY MOTER 450 (8)
PETE NOWICKI 67 (1)
JIM OSBORN 126 (2)
JOHN PATTON 776 (1)
ANDREW PETRO 750 (1)
RICK POETH 977 (1)
HAROLD QUEEN 572 (11)
ART SANTEN 158 (2)
ED SCHAEFER 691 (2)
PAT STAMBAUGH 930 (6)
JOHN STANLEY 339 (44)
ERNIE THOMS 852 (10)
VERNE VOLLRATH 162 (4)
HARRIET WALDO 228 (1)
JOE YOUNG 314 (1)

Growing Displays

Don Bull

When John Stanley asked me to write an article on displaying openers and corkscrews, I decided to attempt to give you some thoughts through the telling of the growth of my own collection and how the display of it changed over the years.

On the last page of my first opener book, *Beer Advertising Openers - A Pictorial Guide*, you will find a picture of my first opener displays. We were living in Trumbull, Connecticut at the time and this was the last time Bonnie allowed openers to dominate a room in the main living area. Some openers were hung on the net using Christmas tree ornament hooks. Others were mounted on pegboard in the hall.



Early Bull displays

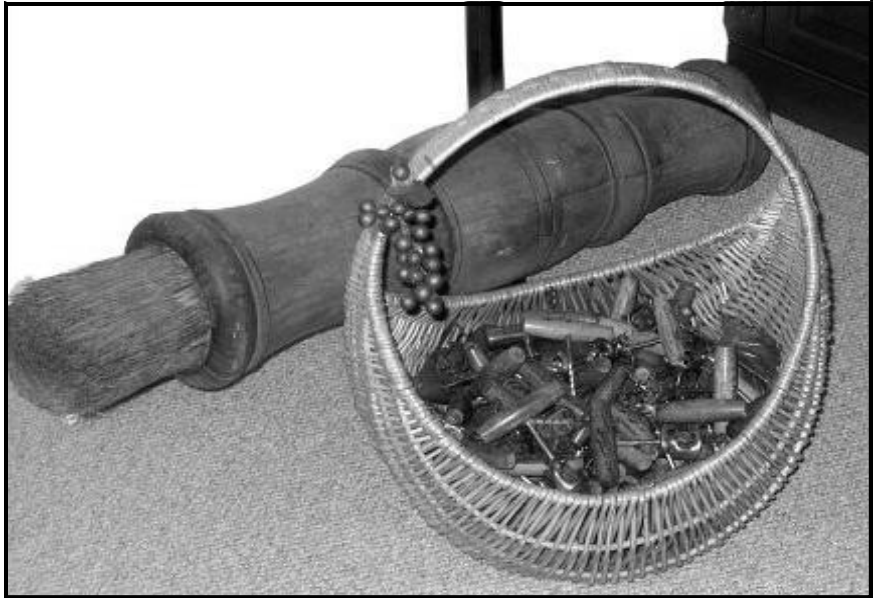
Shortly after the openers were hung, I, coincidentally, received a telephone call for a reporter at the Bridgeport Post who invited me to come to her office for an interview. I packed up a few openers and went for the interview. She asked numerous questions and feverishly took notes. During the interrogation, she asked how I displayed them and I told her that they were hung with Christmas tree ornament hooks on a net. She quickly made a note of that.

The full page article appeared on the first page of the Sunday before Christmas living section. We went to church that morning and were greeted with a number of curious stares. I asked a member of the congregation what was up and he replied, "Have you seen the morning paper?" We went home, collected the paper from the box, and leafed to the living section. There was the article replete with pictures and copy at the very end of the article was "And guess what the Bull's hang on their Christmas tree during this season?" - so much for reporter notes!

In our next house, my openers were relegated to the basement never to be seen in the living room again! I mounted three 4' x 8' pieces of pegboard on the wall and hung openers and corkscrews on it with Christmas tree ornament hooks. The nice thing about those hooks is they can easily be bent to suit and secure the opener. In addition, I built some wall hung shelves to display the stand-up openers as well as Bonnie's vast collection of figural openers.

The next move found room for an office. I bought some wall units with drawers and shelves which accommodated many of the pieces. And again pegboard was used for displaying others. Some choice pieces were placed in those black cases with glass inserts in the tops, cotton batting, and those pins that invariably get lost in the carpet when you remove them. When I decided to concentrate on corkscrews and began to weed out my opener collection, John Stanley visited for a little gardening. He quickly plucked many prime pieces from those black cases. With the heart of the opener collection taken, I decided to dispose of all but the beer advertising corkscrews and knives.

While packing for the next move, I discovered that Bonnie had a seemingly endless collection of baskets. I commandeered several for corkscrews. The wood handle beer advertising corkscrews came off the pegboard and into one large basket. That basket seems to be John Stanley's favorite. Every time he visits, he sits down beside it, empties the contents, and sets aside a few pieces and says "Let's see what I have in the truck to trade."



I've also found some interesting drawer units for display. A 22" x 38" oak printer's cabinet with twenty drawers (sans block dividers) houses hundreds of corkscrew knives and other small pieces. A six drawer spool cabinet is home for some special pieces.

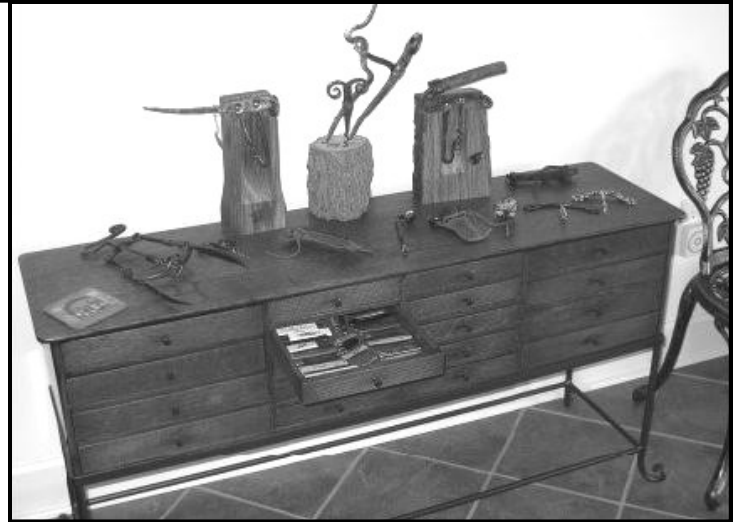


Printer's Cabinet



Spool Cabinet

An oak chest with eighteen 12" x 12" drawers is great for another batch of smalls.



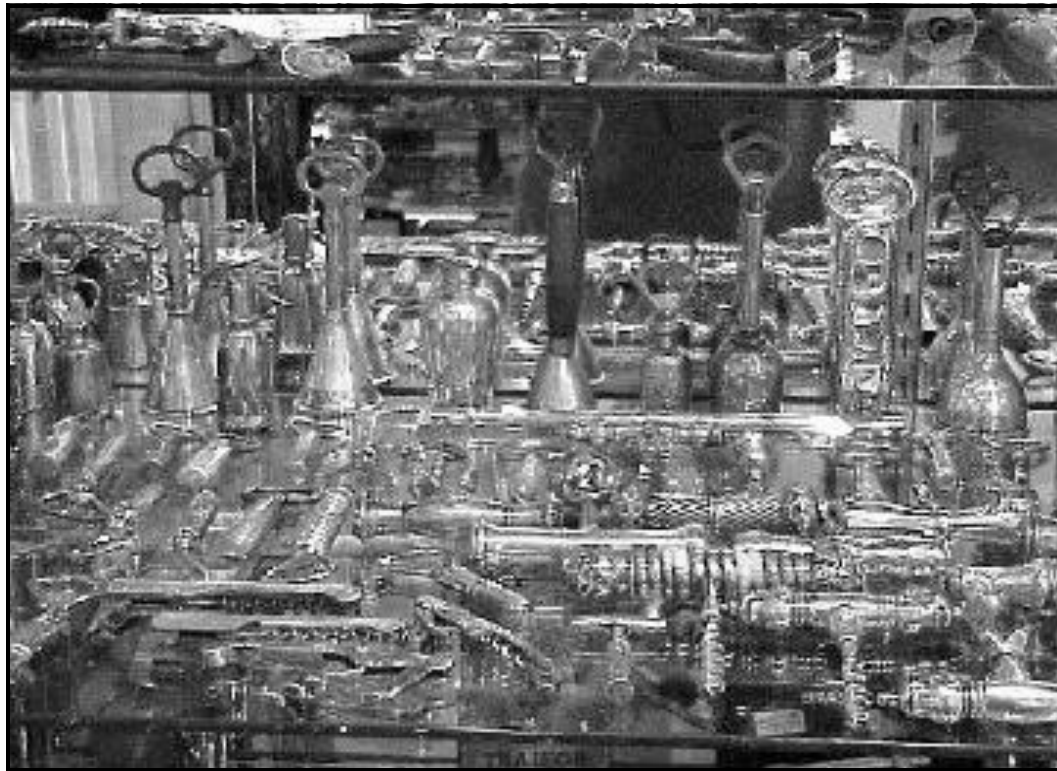
And one of the best things I found for display is a new metal drawing / chart unit. The 30" x 40" unit has five locking drawers. I stacked three of these together and there is room for thousands of corkscrews. Pieces of heavy cloth were cut to fit the bottom of each drawer. The drawers slide smoothly in and out (like a file drawer) so it helps keep the worms straight (!!!).



My dream has been to have a "museum" to house my corkscrews. When we built our new house, my wish came true. On both ends of the 12' x 17' "museum" room, I built in 7' tall wall to wall cabinets with glass shelves and mirrored backs and sides. The shelves are 18" deep and 9" separates each for easy viewing of all the contents. The mirrors give it depth and visibility of all sides of the stand-up pieces.



The museum contains over 6000 corkscrews



Cabinets have glass shelves with mirrored backs

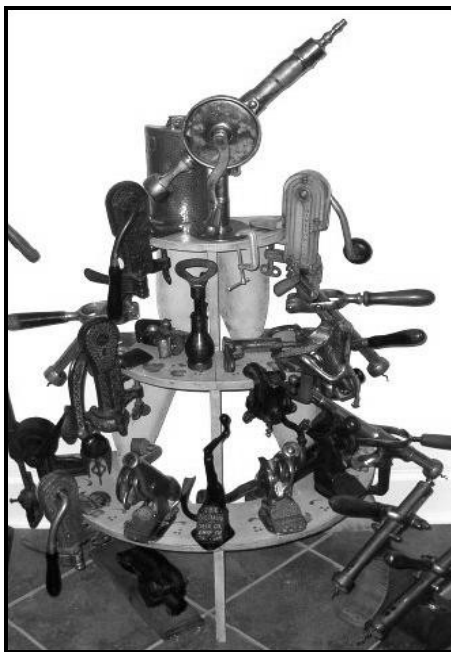
A big question always was "How to categorize the display." Randomly? From old to new? By type? By color? Figurals were fairly simple - dogs, cats, horses, pigs, weapons, golf, devils, etc. got their own sections. American patents found their own shelf (unless they are figural!). Cork ejectors and medicine screws found separate areas. As did carvings, folding bows, and concertinas. Old Snifter got his own area next to some legs and hands. And it goes on and on.

In beer advertising openers, I dare say that the majority of collectors organize and display their treasures by type. But there are some who have rather large accumulations of openers from particular breweries or areas. Consider these carefully, in making your special displays. And if your collection is only displayed by type, look through your collection. Do you have a large number of Anheuser-Busch openers? Or Pabst? Or Schlitz? Or Philadelphia? Or Brooklyn? These special collections deserve their own space and can add a special flavor to your collection.

I hope my personal experiences give you some ideas about building your own displays. Take some pictures of what you have done and send them to John for future issues of JFO.



Andre offers up a variety of waiter's friend corkscrews

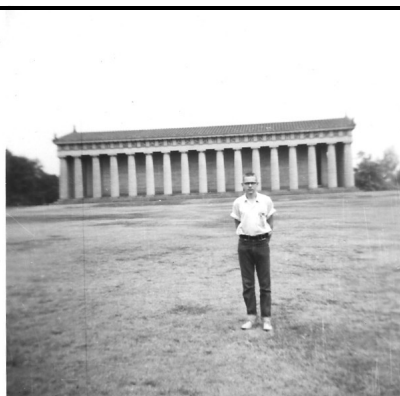


A flower pot stand is perfect for bar mounted corkscrews



An umbrella stand holds a bunch of corkscrew canes

My first (and only) visit to Nashville was in July, 1959. I was 15. I remember hooking up the trailer to the 1957 Studebaker Provincial, the drive from Michigan, and the stop at the Parthenon, a fabulous structure built for Tennessee's 1897 Centennial Exhibition. I look forward to seeing the building from older eyes. (Don Bull)



“Opener and eBay Trivia”

In the last issue, the question was posed about a P-109 Vaughan Dainty found by Don Bull with an ad for Fred Huntzicker of Fresno, Ca. Should it be a new addition and since no one responded, I decided to not list it at the present time and hope some more historical research can be done. Also in the last issue we had a picture of a Coors Wolf Head plaque that supposedly functioned as an opener but Mike Krejci confirmed it does not.

Actually I ended with a few more eBay results than the previous quarter and I was moderately surprised. It had really been slow for me buying especially the last couple of months, but as always eBay had plenty of good openers and corkscrews sold this past quarter.

The “A”s were led by Coca-Cola openers and for the first time in a couple of years a real A-9 Coca-Cola baseball player opener was offered for sale and JFO member, Dick Friedman, was the winning bidder at \$338.99. This one had the ad “In Bottles” and I sold one for Dave Lendy on eBay in 2002 for about \$650. The condition of Dick’s seemed to be much better. A very hard Coca-Cola opener to find and also very desirable. Other Coca-Cola “A”s sold and did well including an A-1, A-30, A-35 and a fair condition A-503.

Beer “A”s saw some nice ULs and Mike Krejci was the winning bidder in several with an A-2-UL Blatz being the best. It is very strange that for 26 years JFO members have looked for an A-2 with a U. S. beer ad on it. Some close ones have been listed but never one for sure. Then in the past few months two different U. S. beer ad ones turn up (see 2006 New Additions). A very desirable Canadian figural was offered (see Opener Trivia pictures), a White Cap baseball cap, and brought a strong price of \$202.19. John Cartwright was trying very hard to get it for Jack Ford but lost out to a seriously deep-pocket Canadian collector. P.S. If anyone has one they would like to get rid of, Jack Ford has some nice trading material.

Many nice “B”s sold this past quarter. They were led by a B-2-35 Bangor at \$197.50 (Mike sounded the horn) and a B-27-2 Erie at \$158.50. Numerous beer B-18s to B-24s sold with two key ones being the B-21-UL Rockwood Brewing from Rockwood, Pa. at \$79.99, and the B-22-136 Utah at \$71.01 (the only other one of these I have seen sold for \$113.99). The B-21 King Cola Lynchburg, Va. was a very big surprise seller for me at \$105.00. I did not know any of the bidders and we had one sell in a JFO auction last year for \$10.00. Ebay is always full of sur-

prises and this was definitely one. On the low end of surprises were the two B-31s bringing \$22.00 and \$42.00 for a Falstaff and a Griesedieck Bros. respectively. Outside of the B-31-5 Kuebler this style is not easy to find and even the Kuebler does not turn up that often.

“C” types were highlighted by a nice C-1-6 Bismarck realizing \$169.49. I lost out on this one and have only seen one other and it had no paint. The Hawaii boys have found a box of the C-12-13 Hawaii openers. There is always one for sale on eBay and someone a few months back sold a pile of them with rust. You would think that would lower the price but the three this quarter all brought \$25-\$30.

For once, no “D” results but the “E”s or wires made up for it as some really nice ones were sold. Top lot was the E-8-UL Chattanooga and Larry Moter went big at \$157.99 and sometimes you have to do it. Larry also got a nice E-2-UL City Brewery from Toledo, Oh. for \$46.87. He followed that up with two E-23s, #11 Evansville at \$60.59 (your editor ran him up on this one) and a #25 Garden City at \$39.00. Finally he got the E-14-863 Lone Star for \$41.40. A local Texas collector had found four at a house sale and then this one turned up. All in all a great quarter for “Mr. Wire”, Larry Moter. Dick Friedman got a nice E-4 Coca-Cola opener with only the word Southwestern on one side for \$90.89.

“F”s or “kitchen openers” had the usual selection of Coca-Cola spoons and ice picks and for the most part they brought the average book prices. Mike Krejci finally got his F-1-2 Waukesha (remember he likes Schlitz and Wisconsin openers) opener but had to pay \$80.99.

Figural (FBOC) openers saw one good one sold, the FBOC-427 “Bear” and it brought \$1,504.00. One good U. S. beer “G” sold, the G-1-26 Yoerg and it sold for \$91.00. I finally decided to sell some Dr. Pepper openers and my G-4 and H-2 each brought \$125.00. Joe Young had one more nice K-12-1 Lone Star and it sold for \$450.00 while one in so-so condition sold for \$232.50. Hard to find with the original gun and stickers in nice shape.

The bottle corkscrews dominated the “L” news and the never ending supply of L-2-1 A-B and L-2-2 A-B Malt Nutrine continued and they always bring good money considering how common they are (same holds true for the M-25-1 Lemp as this quarter’s results show). The

“Opener and eBay Trivia”

seldom seen L-2-4 Buffalo Co-Op brought \$137.50 while the more common L-2-5 Eldredge brought \$210.07. Never try to fully understand eBay.

“M”s were highlighted by a previously unknown M-3 Slider hitting the market (from the 1939 New York World’s Fair). The lucky seller actually found two and they brought \$140.00 followed by \$169.50. Art Johnson (of Mass and Florida fame) bought the first one and says his looks like it was never painted just a dull finish. Possibly a couple of proto-types that never actually hit the market? One comment about the M-19-3 Narragansett (MIB) bringing \$152.50, “is a box really worth that much?”. It must be at that price because the M-19-3 is one of the most common M-19s. Of course we cannot forget those fake M-19 Coca-Cola openers. Always offered for sale and one brought as high as \$123.38 and the picture was fuzzy enough that it may have been a real one. With so many fakes available why would anyone pay much for a real one?

The Lone Star spinner badge openers, M-27, continue to sell well (just like their belt buckle counterparts, the N-40). Several nice corkscrew sliders were sold this quarter as the “Great Northwest” sellers continue to find these. Harold Queen did get the high one at \$201.99 for a M-73-2 Missoula and it was near mint. Harold wanted me to make a correction from the last issue where I said he got the M-73-14 Budweiser/Beckers on eBay. It was not him but a non-JFO member, Eric Bittner, whose eBay handle now is “open2interpretation”. He is very fond of bidding on “UL” openers (unlisted in the Handbook).

“N” or “Novelty” openers were offered in the market but nothing unusual or real exciting. It was strange that even though the style is only about 25 years old, a “UL” truck knife turned up, an N-23 Iron City Beer. The wall mounts were dominated again by the soda collectors. A dealer from Virginia found four O-505 “Icy-O”s at a Newport News flea market and assumed since he got four that they were fakes. There was nothing fake about the final price realized for two of them at \$399.25 and \$406.00. I believe he was keeping one and maybe sold the other one “off-line”.

Before now the O-502 Coca-Cola “side-mount” was very hard to find and then in one quarter three are sold on eBay. Dick Friedman got the nice one at \$380.00 and the two lesser grades brought the same price and a little less. It seems the “Starr” market has settled down with most of

the current bidders and collectors just going after the “Rare” ones. Any that were in the \$100-\$200 range have fallen to the \$50-\$100 range.

“P” beer corkscrews were fairly active. Gary Bauer got a nice P-2-3 Voigt from Detroit for \$160.00 (this one came out of Don Bull’s collection as he “thinned” a few pieces out). John “Woody” Cartwright gobbled up all of the nice wood handle corkscrews with U. S. beer ads except for that P-7-UL Schlitz that Mike again sounded the horn on. I have finally realized that general corkscrew collectors do not care if the P-13-1 Schlitz has a readable ad or not as they always pay \$75-\$125 for ones with the ad worn off. Just one of those that they want the type and since it has the Schlitz “Globe” bell, they are just happy having that part in good shape.

No startling A-B knife sales this quarter, at least ones with an opener or corkscrew blade. A pear handled two-bladed knife with just Anheuser Busch on the handle sold for \$842.00. It was a style A-B knife I had not seen before. A Pabst P-159 did bring \$363.00 despite having a broken blade. Another knife from the Don Bull “thin-out”, a P-108-1 Pfeiffer brought \$255.79. I sold “Woody” Cartwright some of my wood handle ones and put the P-51-51 Portner on eBay and got a Buy-It-Now price of \$250.00.

Don’t ask me why but Mike Krejci really liked the “New Discovery” R-55-1 Primo and had two other serious bidders to compete with before winning it at \$228.26. I guess he has “driven truck” around Hawaii before? Remember its only money. You can get more money but may never see this opener again. I finally will own an example the 1915 Panama-Pacific Expo multi-tool. Bill McKenzie showed a drawing of one 15 years ago in Opener Trivia and I have always wanted one. Still waiting for the mail to deliver it.

General corkscrews continue to sell well especially the rare and desirable ones. The country of origin does not matter as this area of collectibles continues to grow (see the preceding article from the “Antique Trader”. Top lot I saw this quarter was a French 1902 “Ultra Rapid” and it brought \$7,023.19. One corkscrew that continues to amaze me is U. S. Syroco “Golden Knight”. Each month one is available on eBay and as many as have been sold, they always bring in the \$2,500 to \$3,000 range. Certainly not that rare but also certainly that desirable.

“Opener and eBay Trivia”

A-001-006	Finks (Var B)	\$26.01	A-016-010	Portsmouth	\$25.00	A-042-010	Fisher (Good)	\$49.99
A-001-048	Sebewaing	\$64.99	A-016-999	Blue Ridge Water Bangor PA	\$30.98	A-042-016	Premo	\$106.50
A-001-064	Great Falls	\$34.45	A-016-999	Mt Kineo	\$52.75	A-043-999	Wymore Bottling NE	\$34.25
A-001-068	Liberty	\$31.05	A-020-018	Elfenbrau	\$23.27	A-077-001	Coors	\$50.09
A-001-108	Manhattan	\$29.99	A-020-019	Weibel	\$20.00	A-503-999	Coca-Cola (Fair)	\$77.00
A-001-999	Coca-Cola Baltimore MD (BIN)	\$185.00	A-020-044	Seitz (EX)	\$32.99	A-999-999	Goodyear Air-plane	\$32.00
A-001-999	Nehi	\$20.54	A-021-018	Budweiser	\$15.61	A-999-999	Goodyear Air-plane	\$50.97
A-001-UL	Old Style Malt Extract	\$27.00	A-021-039	Foss-Schneider (EX)	\$24.99	A-999-CAN	White Cap (Shape of a Cap) (EX)	\$202.19
A-002-UL	Keg & Bottle Blatz	\$79.99	A-021-054	Rahr	\$17.50	B-002-019	Rising Sun (Good)	\$242.50
A-004-003	Cascade	\$16.50	A-021-072	Falstaff Dads Root Beer	\$29.79	B-002-023	Hazelwood	\$46.99
A-004-017	Alpen Brau (Var B)	\$18.06	A-021-083	Golden Glow	\$20.50	B-002-030	Hanley (EX) (BIN)	\$75.00
A-004-030	Preferred Stock	\$22.02	A-021-085	Prior (EX)	\$11.50	B-002-034	Rainier	\$29.99
A-004-999	Chero-Cola	\$20.50	A-021-117	Bartels	\$52.00	B-002-035	Bangor	\$197.50
A-004-999	Whistle Rome NY	\$23.00	A-021-138	Barbarossa	\$14.50	B-002-043	Eagle	\$43.50
A-004-CAN	Coplands Ale & Lager	\$15.05	A-021-999	Cheerwine (EX)	\$31.00	B-002-043	Eagle	\$45.68
A-005-011	Stoneys	\$32.50	A-026-001	Empire	\$48.99	B-002-043	Eagle (Good)	\$32.00
A-005-025	Eastside	\$66.00	A-028-UL	Clairton Brewing Co	\$57.61	B-002-999	Coca-Cola	\$110.00
A-005-054	Great Falls	\$27.99	A-028-UL	Schlitz / Bisbee Co Agents	\$60.59	B-002-999	Coca-Cola (EX)	\$124.77
A-005-095	Sabbe Malt	\$41.58	A-029-021	Manistee	\$54.07	B-002-999	Coca-Cola (EX)	\$56.00
A-005-CAN	White Cap	\$49.89	A-029-106	Roche Malt	\$51.99	B-003-006	Aurora (Good)	\$28.00
A-007-013	Mohawk	\$22.49	A-029-999	Dr Pepper	\$43.51	B-005-004	Reno	\$60.00
A-009-007	Bohemian Malt	\$33.00	A-029-999	Dr Pepper (Spinner)	\$50.00	B-013-007	Haberle-National	\$24.95
A-009-017	Schells	\$52.00	A-029-999	Pepsi=Cola 5c	\$27.00	B-013-032	Iroquois Bev	\$34.89
A-009-999	Coca-Cola Canton City (Fake)	\$76.00	A-029-999	Pepsi=Cola 5c	\$61.00	B-014-108	Fresno	\$19.28
A-009-999	Coca-Cola In Bottles	\$338.99	A-029-999	Pepsi=Cola 5c (Hogstooth) (EX)	\$54.53	B-014-155	Anaconda	\$46.00
A-013-020	Hoster	\$78.99	A-030-003	Leinenkugel (Good)	\$76.75	B-014-999	Coca-Cola (EX)	\$66.00
A-015-001	Aurora (Good)	\$21.17	A-030-999	Coca-Cola Sapula-Bristow	\$161.39	B-014-999	Dr Pepper	\$37.61
A-015-005	Schreier	\$32.97	A-030-999	Nehi Wichita KS	\$25.49	B-016-002	Haberle	\$23.26
A-016-006	Goetz (Good)	\$76.00	A-035-013	Gilt Top	\$34.99	B-017-002	Strohs (BIN)	\$40.00
			A-035-999	Bartlesville Coca-Cola Bottling Co	\$159.46	B-018-058	Pacific Club	\$27.67
						B-018-242	Acme (Var A)	\$18.00
						B-018-263	Diersen	\$20.51

“Opener and eBay Trivia” (“BIN” Buy-It-Now & “DNMR” Did Not Meet Reserve)

B-018-367	Indian	\$22.00	B-021-501	Fesenmeier (Good)	\$24.99	B-065-002	Silver Foam	\$82.81
B-018-421	Kunz Blesser	\$56.01	B-021-999	King Cola Lynchburg VA	\$105.00	C-001-006	Bismarck (EX)	\$169.49
B-018-437	Kazmaier	\$40.00	B-021-999	Rye-Ola Quitman GA	\$36.99	C-002-003	Hutchinson (EX)	\$32.52
B-018-460	Texas (Good)	\$69.00	B-021-UL	Rockwood / Mountain Pride Beer	\$79.99	C-006-001	Congress	\$26.00
B-018-552	American (w/ Envelope)	\$16.50	B-022-011	Kessler	\$41.99	C-012-013	Hawaii	\$26.09
B-018-553	Arlington (Fair)	\$45.44	B-022-012	Leisen Henes	\$13.50	C-012-013	Hawaii	\$29.89
B-018-561	Evans	\$21.45	B-022-029	Huebner	\$31.00	C-012-013	Hawaii	\$33.00
B-018-606	Providence (EX)	\$52.51	B-022-048	Michel	\$23.00	C-012-151	Elfenbrau	\$21.28
B-018-999	Coca-Cola New Castle PA	\$84.89	B-022-073	Reisch	\$60.59	C-013-050	Glennons	\$15.01
B-018-999	Papoose Ginger Ale NO LA	\$56.55	B-022-099	Fitgers	\$27.50	C-013-133	Glennons	\$15.28
B-018-999	Pepsi-Cola Charlotte	\$113.61	B-022-099	Fitgers	\$27.00	C-013-198	Union	\$45.44
B-018-UL	Bohemian Malt (BIN)	\$50.00	B-022-099	Fitgers	\$19.42	C-013-239	Manistee	\$19.37
B-019-006	Centlivre	\$34.99	B-022-106	Famous (EX)	\$36.00	C-013-999	Pepsi=Cola 5c	\$34.33
B-019-075	Columbia (EX)	\$33.78	B-022-136	Utah	\$71.01	C-013-999	Pepsi=Cola 5c	\$24.85
B-019-108	Star	\$41.00	B-023-999	Coca-Cola Wichita KS	\$49.99	C-023-001	Jackson	\$18.00
B-019-165	Davenport	\$45.88	B-024-024	Mineral Spring	\$33.00	E-001-032	Joliet	\$31.11
B-019-213	Lima	\$31.00	B-024-087	Hillsboro	\$20.50	E-002-UL	City Brewing Toledo OH	\$46.87
B-021-044	Kalamazoo (Good)	\$67.55	B-027-001	Miller (Steel) (BIN)	\$50.00	E-003-064	Great Falls	\$10.50
B-021-053	Muessel	\$12.50	B-027-002	Erie Imperial	\$158.50	E-004-060	Miami Valley	\$12.51
B-021-063	Quandt	\$78.77	B-031-003	Falstaff	\$22.00	E-004-087	Star Wooden Shoe	\$31.02
B-021-079	Seitz	\$23.85	B-031-004	Griesedieck Bros (EX)	\$42.00	E-004-088	Stein	\$35.00
B-021-095	Bay City (EX)	\$54.00	B-031-999	Hub Ginger Ale Hartford CT	\$30.98	E-004-104	Burlington	\$22.05
B-021-162	Genesee (Var A)	\$38.99	B-031-999	International Harvester	\$36.00	E-004-122	Keeley	\$22.00
B-021-223	Billings	\$32.00	B-033-002	Heileman (Brass)	\$64.71	E-004-137	Grossvater	\$31.00
B-021-245	Fort Pitt	\$20.51	B-036-009	Stone Malt	\$16.66	E-004-999	Coca-Cola Southwestern	\$90.89
B-021-352	Montana	\$26.00	B-042-999	Coca-Cola	\$41.00	E-005-999	Dr Pepper Lenoir City	\$26.00
B-021-353	Oswald	\$15.51	B-042-999	Coca-Cola (Good)	\$42.77	E-005-999	Dr Pepper Lenoir City	\$31.99
B-021-353	Oswald	\$26.01	B-060-003	Stark-Tuscarawas (BIN)	\$75.00	E-005-999	Pepsi=Cola Petersburg WV	\$32.00
B-021-452	Indian	\$20.50				E-005-999	Pepsi-Cola Texarkana TX	\$43.99
						E-005-999	Pepsi-Cola Walter Bros	\$47.88
						E-006-065	Pioneer	\$19.50
						E-006-146	Penn-Indiana	\$35.99
						E-008-011	American	\$15.50

“Opener and eBay Trivia” (“BIN” Buy-It-Now & “DNMR” Did Not Meet Reserve)

E-008-101	Obermeyer & Liebmann	\$42.00	F-006-012	Uhls	\$20.50	L-002-002	A-B Malt Nutrine (EX)	\$41.00
E-008-UL	Chattanooga Brewing	\$157.99	F-006-057	Wetterer	\$34.50	L-002-004	Buffalo Co-Op	\$137.50
E-009-081	Royal	\$41.00	F-006-UL	Cy Young Malt Philadelphia	\$78.77	L-002-005	Eldredge	\$210.07
E-014-099	Fresno	\$26.00	F-006-UL	Krantz Old Dutch Beer Toledo OH	\$66.25	M-001-021	Kings	\$106.19
E-014-381	Hochgreve	\$13.51	F-013-001	Gutsch (BIN)	\$50.00	M-002-014	Liebmann	\$66.00
E-014-652	Victor	\$44.89	F-015-999	Coca-Cola Greenwood MS (EX)	\$76.75	M-002-999	Hires	\$87.99
E-014-760	Boston	\$23.28	F-027-999	Coca-Cola / Home Service	\$125.00	M-003-008	Erie	\$29.88
E-014-863	Lone Star Villaret	\$41.40	FBOC-043	Grass Skirt Greek	\$280.00	M-003-011	Cumberland (EX)	\$23.00
E-014-999	Pepsi-Cola Grand Pop	\$20.01	FBOC-065	1948 Brass Donkey	\$127.50	M-003-012	German (EX)	\$51.88
E-016-003	West End	\$20.20	FBOC-427	Bear	\$1,504.00	M-003-028	Victor (EX)	\$75.99
E-016-008	Deppen	\$35.00	G-001-026	Yoerg	\$91.00	M-003-029	Victor (EX)	\$33.00
E-019-003	Fitzgers	\$72.09	G-004-999	Dr Pepper Good For Life (BIN)	\$125.00	M-003-999	Dr Pepper	\$43.27
E-023-011	Evansville	\$60.59	G-009-030	Yuengling	\$39.00	M-003-999	Moxie (EX)	\$48.37
E-023-025	Garden City	\$39.00	G-009-CAN	Kuntz Old German Lager (EX)	\$52.77	M-003-999	New York 1939 Worlds Fair	\$140.00
E-025-006	Krueger	\$18.76	G-014-004	Lone Star	\$12.26	M-003-999	New York 1939 Worlds Fair	\$169.50
F-001-002	Waukesha	\$80.99	G-020-001	Strohs	\$22.51	M-003-CAN	Sheas	\$25.49
F-002-011	Wacker	\$24.99	G-999-CAN	Kuntz Brew Waterloo (Similar G-3, GF-12)	\$48.89	M-007-001	Duquesne	\$21.49
F-002-034	Rainier	\$26.00	H-001-002	Consumers	\$21.50	M-019-002	Miller	\$66.00
F-002-999	Coca-Cola Dyersburg TN	\$87.17	H-002-999	Dr Pepper Good For Life (BIN)	\$125.00	M-019-002	Miller	\$20.50
F-002-999	Coca-Cola Enid OK	\$133.50	H-008-019	Atlantic	\$32.00	M-019-003	Narragansett (MIB)	\$152.50
F-002-999	Coca-Cola Enid OK	\$86.54	H-008-999	Pepsi=Cola (EX)	\$29.51	M-019-008	Bruckmann (MIB)	\$35.01
F-002-999	Pepsi-Cola	\$43.99	I-007-028	New England	\$21.53	M-019-999	Coca-Cola (Fake or Real ???)	\$123.38
F-002-999	Pepsi-Cola	\$21.08	K-002-004	Blatz (No Paint)	\$52.00	M-019-999	Coca-Cola (Fake)	\$36.00
F-004-002	Iroquois Bev	\$17.49	K-002-007	American	\$56.00	M-019-999	Coca-Cola (Fake)	\$42.00
F-004-999	Coca-Cola Natural Flavors	\$47.99	K-012-001	Lone Star (EX)	\$450.00	M-019-999	Coca-Cola (Fake)	\$29.01
F-004-999	Pepsi-Cola	\$21.50	K-012-001	Lone Star (Good)	\$232.50	M-025-001	Lemp	\$68.00
F-005-025	Bethlehem Malt	\$26.50	L-001-005	Pabst (EX)	\$27.56	M-025-001	Lemp	\$61.00
F-005-046	Brockton Malt	\$28.00	L-002-001	A-B (Var B)	\$78.95	M-025-001	Lemp	\$63.00
F-005-999	Coca-Cola / Chertman	\$125.00	L-002-002	A-B Malt Nutrine (EX)	\$80.00	M-025-001	Lemp	\$69.00
F-005-999	Coca-Cola / Coatesville	\$79.89						

“Opener and eBay Trivia” (“BIN” Buy-It-Now & “DNMR” Did Not Meet Reserve)

M-025-001	Lemp	\$51.00	O-005-010	Southern Select (MIB)	\$19.00	P-019-092	Anheuser-Busch	\$38.00
M-025-999	Brown-Forman Whiskey	\$56.00	O-005-015	Stegmaier	\$32.01	P-019-UL	Krenik Brewery Saloon Vancouver WA	\$112.51
M-027-001	Lone Star	\$43.64	O-005-999	Crosley	\$59.50	P-025-003	A-B (1952 Ver) (MIB)	\$255.10
M-027-001	Lone Star	\$51.64	O-005-999	G E	\$102.50	P-025-003	A-B (EX)	\$300.00
M-027-001	Lone Star	\$26.55	O-005-999	G E	\$36.01	P-025-003	A-B (EX)	\$330.00
M-029-UL	Dakota Brewing	\$32.85	O-005-999	Nehi	\$46.00	P-025-003	A-B (EX) (BIN)	\$399.99
M-062-001	Schlitz (MIB)	\$30.99	O-005-999	Nehi	\$89.88	P-025-003	A-B Knife 2001 Edition (MIB)	\$143.51
M-073-001	Missoula (EX)	\$177.52	O-005-999	Nehi	\$100.56	P-025-999	A-B Knife 2001 Edition (MIB)	\$178.50
M-073-002	Missoula (EX)	\$201.99	O-005-999	Nehi (Pat Reg)	\$82.66	P-026-008	A-B (Metal)	\$158.50
M-073-003	Missoula (Fair)	\$40.75	O-005-999	Red Rock Cola	\$55.09	P-026-008	A-B Green Handles	\$405.00
M-073-999	American Box Co SF CA	\$87.92	O-502-999	Coca-Cola	\$350.00	P-026-UL	A-B / Eagle In A) (All Metal Handles)	\$271.66
M-073-999	Chicago 1934 Worlds Fair	\$152.50	O-502-999	Coca-Cola	\$380.00	P-032-UL	Pabst Ramlack Pittsburg	\$87.13
M-073-999	Texaco Butte MT	\$125.00	O-502-999	Coca-Cola (EX)	\$380.06	P-042-001	Bartholomay (EX)	\$83.24
N-004-999	Pop Kola (EX)	\$49.00	O-505-999	Big Boy	\$77.00	P-043-005	Strohs	\$33.53
N-005-001	West End	\$51.01	O-505-999	Icy-O	\$399.25	P-046-UL	Schlitz Beer	\$27.75
N-005-001	West End (EX)	\$51.01	O-505-999	Icy-O	\$406.00	P-051-051	Portner Danville VA (BIN)	\$250.00
N-013-002	National Orioles (MIB)	\$34.51	O-505-999	Nehi	\$66.00	P-090-005	Hupfel (EX)	\$31.10
N-020-001	Birk Bros	\$37.79	O-505-999	Orange Crush	\$35.89	P-108-001	Pfeiffer	\$255.79
N-021-001	A-B Malt	\$60.59	O-511-999	Coca-Cola	\$63.52	P-117-001	Bohemian Club	\$12.11
N-023-UL	Iron City Beer	\$28.61	O-511-999	Coca-Cola	\$54.00	P-141-002	Latrobe (Good)	\$78.77
N-026-001	Richbrau	\$30.00	O-999-999	Flight Malted Milk (Overized O-5)	\$260.00	P-159-001	Pabst (Broken Blade)	\$363.00
N-027-UL	Busch Bavarian Beer	\$21.05	P-001-006	Strohs	\$52.79	R-003-006	Iroquois (Brass)	\$39.99
N-027-UL	Hamms Beer (EX)	\$43.25	P-001-006	Strohs	\$88.79	R-007-001	Hauenstein (Good)	\$54.00
N-048-001	Valley Forge (EX)	\$121.50	P-002-003	Voigt	\$160.00	R-055-001	Primo	\$228.26
N-062-001	Schlitz Coca-Cola	\$63.89	P-003-001	Pabst	\$85.05	Z-999-999	1915 Pan-Pac Multi-Tool	\$89.00
N-062-001	Schlitz Coca-Cola	\$57.99	P-007-007	Berghoff (EX)	\$43.00	Z-Corkscrew	American 1879 Shelleys Ladies Friend Patent	\$2,028.38
N-062-001	Schlitz Coca-Cola	\$44.89	P-007-054	El Paso (Miss Screw)	\$66.00			
N-085-001	West End	\$47.95	P-007-055	Washington	\$42.50			
N-085-999	Coca-Cola	\$26.50	P-007-UL	Schlitz & Picnic Opener Ad	\$180.27			
N-102-999	Coca-Cola (EX)	\$56.00	P-008-072	Leisy	\$49.99			
N-121-999	Dr Pepper Danville VA	\$79.99	P-013-001	Schlitz	\$76.88			
N-504-999	Coca-Cola (EX)	\$47.61	P-013-001	Schlitz	\$125.50			
O-005-006	Jackson	\$50.00	P-013-001	Schlitz (Good)	\$81.00			
			P-014-001	Blatz (MOP Handles-No)	\$41.00			

“Opener and eBay Trivia” (“BIN” Buy-It-Now & “DNMR” Did Not Meet Reserve)

Z-Corkscrew	Austrian Hagenauer Sailor	\$797.77	Z-Corkscrew	US 1886 Woodman Patent	\$1,620.00
Z-Corkscrew	English 1840 Robert Jones Patent	\$2,262.62	Z-Corkscrew	US 1917 Brady U-Neek Patent	\$1,159.80
Z-Corkscrew	English 1840 Robert Jones Patent	\$1,422.62	Z-Corkscrew	US 1917 Brady U-Neek Patent	\$938.00
Z-Corkscrew	English 1883 Bradnock's Magic Twist Patent	\$5,955.00	Z-Corkscrew	US 1917 Brady U-Neek Patent	\$611.00
Z-Corkscrew	English 1884 Wiers Double Patent	\$2,876.99	Z-Corkscrew	US 1938 Smythe Hootch Owl	\$2,125.99
Z-Corkscrew	English 1890 Heeley Empire Patent	\$2,000.00	Z-Corkscrew	US Hoegger Wall Mount	\$113.99
Z-Corkscrew	English 18th Cent Dragon Head Pipe Cleaner	\$4,800.00	Z-Corkscrew	US Leg Knife Brown Bilt Shoes (EX)	\$366.00
Z-Corkscrew	English 18th Cent Steel Pocket T Marked Fox	\$5,200.00	Z-Corkscrew	US Syroco Knight (EX)	\$3,000.00
Z-Corkscrew	English 1903 Hipkins Aluminum Roundlet	\$344.99	Z-Corkscrew	US Syroco Knight (EX)	\$2,603.00
Z-Corkscrew	English 19th Cent Mauds Patent	\$1,604.00	Z-Corkscrew	US Syroco Knight (EX) (BIN)	\$3,000.00
Z-Corkscrew	English 19th Cent Mauds Patent	\$603.86	Z-Corkscrew	US Syroco Monk	\$1,405.00
Z-Corkscrew	English 19th Cent Presto	\$2,401.70	Z-Hagenauer	Scottie Dog w/ Corkscrew	\$391.81
Z-Corkscrew	French 1902 Francois Ultra Rapid	\$7,023.19			
Z-Corkscrew	French 1902 Francois Ultra Rapid (Good)	\$2,403.00			
Z-Corkscrew	French Doghead Perille Express	\$3,350.00			
Z-Corkscrew	German Celluloid Alligator (EX)	\$1,475.00			
Z-Corkscrew	German Celluloid Mermaid (EX)	\$1,175.00			
Z-Corkscrew	German Gropelli	\$1,400.00			
Z-Corkscrew	US 1884 Curley Metal T Patent	\$720.00			



Above, the E-8-UL Chattanooga, just so you can say you have seen a \$157 wire opener!



GF-12 Kuntz that brought \$48.89 on eBay. GF-12 is designation used in the Canadian Beer Book.

As 2005 draws to a close and we start out 2006, may everyone have a great collection year and much camaraderie. Just For Openers keeps rolling along and many thanks to all who contributed to the club in any capacity and hope to see many of you in Nashville.



Above: Rare Canadian beer figural with ad for “White-Cap Caps'em All”, Jack Ford needs one!

JFO and OTHER CLUBS (Newsletter Name in Italics All Clubs Offer an Annual Convention)

American Breweriana Association (ABA): *American Breweriana Journal* (bi-monthly) on breweriana collecting. Dues \$25.00/year. Chris Galloway, Executive Director, PO Box 11157, Pueblo CO 81001

Canadian Brewerianist: *The Canadian Brewerianist* (bi-monthly) on Canadian Breweriana collecting. Dues \$25.00/year (US Funds). Loren Newman, 2978 Lakeview Trail, Bright's Grove, Ontario, CANADA, N0N 1C0

Canadian Corkscrew Collectors Club (CCCC): *The Quarterly Worme* (quarterly) on corkscrew collecting. Dues \$30.00/year. Milt Becker, PO Box 9863, Englewood NJ 07631

East Coast Breweriana Association (ECBA): *The Keg* (quarterly) on breweriana collecting. Dues \$25.00/year. ECBA, Tom Byrne, 53 S 3rd St, Perkasio PA 18944-1805

Figural Bottle Opener Club (FBOC): *The Opener* (quarterly) on cast iron openers. Color guide book: \$23.85/Non Members or \$18.85/Members. Dues \$20.00/year. Lyle Moreland, 864 Jeanette Ave, Baltimore MD 21222

Just For Openers (JFO): *Just For Openers* (quarterly) on all areas of opener collecting (with an auction each issue). Dues \$20.00/year. John Stanley, PO Box 64, Chapel Hill NC 27514-0064

National Association Breweriana Advertising (NABA): *The Breweriana Collector* (quarterly) on breweriana collecting. Dues \$25.00/year. NABA, PO Box 64, Chapel Hill NC 27514-0064

SHOWS & CONVENTIONS (Sources For Openers and Corkscrews)

2006 Feb 15-18 – 27th Annual Blue & Gray Breweriana Show – Ramada Inn Holidrome Fredricksburg VA – All JFO Members Welcomed. Contact: John Fisher, PO Box 953, Benedict MD 20612-0953, (301) 274-3340

2006 Mar 12 – Annual Spring Breweriana & Beer Can Show – Sokol Hall 2234 S 13th St Omaha NE – 9AM to 3PM (8' Tables \$18 Each). Hospitality Room (Sat Evening Comfort Inn I-80 & 13th St Exit). Contact John Mlady (402) 345-7909

2006 Apr 19-23 – 28th Annual Just For Openers Convention – Holiday Inn Select Opryland Nashville TN – All Opener / Corkscrew / Breweriana Collectors Welcomed.
Contact: John Stanley, PO Box 64, Chapel Hill NC 27514-0064 E-Mail jfo@mindspring.com

2006 Jun 13-17 – 25th Annual ABA Convention – Radisson Hotel Pittsburgh PA– ABA Members Only (Saturday Public Show). Contact Christine Galloway, Executive Director, PO Box 11157, Pueblo CO 81001

2006 June 17 – Annual FBOC Convention Reading PA – JFO Members Welcomed.
Contact Sandra Emme, emmyaward@yahoo.com

2006 Jul 12-15 – 34th Annual ECBA Convention – Holiday Inn Downtown Cumberland MD – ECBA Members Only (Saturday Public Show). Contact Tom Byrne, 53 S 3rd St, Perkasio PA 18944-1805

2006 Aug 2-6 – 35th Annual NABA Convention – Holiday Inn Hurstbourne Louisville KY – NABA Members Only (Saturday Public Show). Contact John Stanley, PO Box 64, Chapel Hill NC 27514-0064, (919) 419-1546

2006 Aug 9-12 – Canadian Brewerianist Annual Convention – Crowne Plaza Don Valley Toronto Ontario – All Breweriana Collectors Welcomed. Contact Larry Sherk at larrysherk@hotmail.com, (416) 465-3386

2006 Sep 21-23 – 24th Annual Midwest Breweriana Show – Mid America Center Council Bluffs IA – JFO Members Welcomed. Contact John Mlady (402) 345-7909 or Bill Baburek, (888) 569-7924 E-Mail bjbaburek@cox.net

“On The Road” with Mike Krejci #909 (from Page 2)

Ebay gave up some nice openers this past quarter as well. Notable among them was an A-48 Turtle in blue for about 5\$, a F-1 Waukesha for an amount the seller was surprised at. She said "I didn't know it was that valuable." Heck neither did I, but that is what happens when I have more cash than brains. One more nice addition was a B-2-35 Bangor. I was pretty sure Bill Arber had this one so I'm thinking reasonable price. Wrong someone else had almost enough to beat me. More money than brains again! A good buy was a K-1-1 Old Milwau-

kee for about 15\$ S&H included. I close out with a R-3 Iroquois in brass for 39.99 along with an P-32-UL Pabst for what I thought was a reasonable \$87.

I'll close out this report with mention of a neat advertising brochure I got, also on Ebay. It is introducing Schlitz In "The New And Modern Cap-Sealed Cans" There are several pictures showing the cone top can, one of which pictures a C-13-96 Schlitz opener being used. All-in-all a pretty good quarter. Till next time 18wheels Mike K.

WANTED (Please remember there is no charge for Ads)

Golden Glow Openers: A-1-9, B-23-149, E-14-787, O-4-22 & A-12-12 Grace Bros. Also any Breweriana from Rainier Brewing Co (Seattle WA, LA CA, SF CA), Golden West Brewing Co of Oakland CA & Port Townsend Brewing Co. of Port Townsend WA. Buy/Trade. John Cartwright, 1548 Via Arroyo, Paso Robles CA 93446, (805) 226-9270

A-3-19 Stone Malt Akron. Great Trades or Buy. Jeb Burruss, 318 Lost Oak Dr, Canyon Lake TX 78133, (830) 899-7241

A-22-1 Ballantine. Great Trades Available. Jack Ford, 5351 Boyd Ave, Oakland CA 94618, (510) 655-5393

A-9s: 21 Amber, 26 Penn, 46 Tivoli, 29 Waldorf, B-9-2 Salinas, B-9-10 Ambrosia, B-7 (Beer), B-22 (Beer), B-31-7 Billings, B-31-8 Valley Brew, B-31-11 Bellingham Bay, C-21-6 Grand Rapids, D-16-1 New Kentucky, E-17s: 1 American, 7 ISD, 9 Everett, 12 Lion, G-1s: 31 Griesedieck Bros, 68 Glennon, 69 Leidiger 3-V Bev, 70 Fox Lake, G-5s: 2,9,18,22,23,27,28,29,33,39,40,45,46,48,50, H-1s: 8,12,21,26,27,31,34,35,39,42,44,51, O-1-2 Leidigers, O-505 Lime Cola & O-505 Saegertown (Starr Long Necks)
John Stanley, PO Box 64, Chapel Hill NC 27514

A-17 "Wilber Brewery" & P-8 Corkscrew "Omaha Brewing Association" (EX Cond. Only). Will purchase outright. John Mlady, 1506 S 25th St, Omaha NE 68105-2611, (402) 345-7909

A-43-Dixie. (Buying). Marc Benjamin, 167 Nixon Beach Rd, Edenton NC 27932, (919) 482-2099

B-24-95 Flecks Beverages. Al Fleckenstein, 2445 NW Raleigh St, Portland OR 97210, 503-223-0123, flecks@spiritone.com

B-45, B-66, I-7, P-72, P-100, R-14 types with a Corkscrew (Beer/Non-Beer) & Silver Top Beer Openers. Herb Danziger, 550 Cherry Ct, Birmingham MI 48009-1459, (810) 646-9470

"E"s! Have Trade List (Various Types) or Will Buy. Top 10 List: E-6-208 Old Lancaster, E-14-832 Uneeda, E-7-77 Lima, E-4-207 Yosemite, E-14-626 Modesto, E-16-11 Ganser, E-18-4 American, E-8 #24 & #25 New Braunfels, E-6-213 Kips Bay. Larry Moter, 10149 Michaels Rd, Woodford VA 22580, (804) 448-3928 E-Mail acneca@aol.com

Bond and Lillard Openers (would like to buy). Have A-29, would like any others. Lillard is a family name. George Love, 4301 Forest Plaza Dr, Hixson TN 37343, (423) 877-6006

C-49-11 Bud Fort Collins, C-49-21 Coors Original, C-49-22 Flying Dog, C-49-33 Moose, C-49-34 Rock Bottom, & E-2-19 Yuengling Por-Tor (HELP!!!!!!) Harold Queen, 1001 Centre Ave, Jim Thorpe PA 18229, (717) 325-2612

"E" Type Openers Wanted. Will Trade my "C", "E" and "I" Types. Send trade list and I'll send my list. Ralph Tewksbury, 84 Wildwood Dr, Parkersburg WV 26101 (304) 863-3627

Wanted I-2s # 1 Atlas, 2 Beverwyck, 3 Drewrys, 7 Mitchell, J-8s #13 Ballantine, 14 DuBois. Cash or Trade. Ben Hoffman, 213 Simmons Rd, Perkiomenville PA 18704, (610) 287-8243 or Email benbey@netcarrier.com

G-4s: #10 Jung, #13 Point, #15 520, #18 Southern, #20 Walters, also "I-5"s, "E-14"s, "B-24"s, "G-1"s. Send for Want List. John Patton, 9224 Sugarloaf Dr, Redding CA 96001

"I" need help completing my collection of "I"s. Please send me a list of your extra "I"s with prices. I will respond!

Tom Gormally, 22555 Cardiff Dr, Santa Clarita CA 91350, 661-291-1392, Email tomphyllis@earthlink.net

Serious I-7 Collector: \$10 for a Photocopy of I-7-46 Berg-hoff. Does It Exist??? Hale Milano, 506 Springhouse Road, Camp Hill PA 17011-1454, (717) 737-5067

Atlas Prager Openers: A-21-46, A-21-69, B-24-58, B-24-103, B-28-2, E-5-70, E-7-1, E-8-32, E-14-755, E-14-657, E-14-719, F-4-36, H-2-166, N-10-6, N-10-7, O-8-3, O-8-17, P-66-4.
Dave Lendy, 1927 Allen Dr, Geneva IL 60134, (630) 208-6950

Bottle Shaped and/or Openers with Bottle on them. Especially want M-1-7 King's Chremal & M-2-5 Bartholomay!

Gary Deachman, PO Box 438, North Woodstock NH 03262

Chester PA Openers: B-18-192 Peerless, B-21-557 Haser, C-12-71 Chester, P-7-46 Stoeckle, and A-17-14 & A-43-3 Soda Openers with ad for "Penn Brand". Joseph Knapp, 211-A Berbro Ave, Upper Darby PA 19082, (610) 352-5055

Cigar Box Openers: HT-5---SHM-2,6,13---DHM-13,15---RBO-1---HKH-7,9---HOR-3---RND-13---SQR-4---NL-6---BB-13,16,17,18---PKT-1,2,5,6,8,9,10---SEP-9---MIS-5,8. Ken Hoesch, PO Box 299, Zeeland MI 49464-0299

Hartford, Connecticut Openers & Breweriana Wanted, esp. E-8-61 Fischer & P-17-4 Columbia. Also general CT and New England Beer Openers. Edward Johnson, 1300 Poquonock Ave, Windsor CT 06095, johnsoned1777@hotmail.com

Corkscrews-Cork Pullers-Syroco (especially Golden Knight and Clown)-Early US Patents-Anything Unusual. Have many corkscrews to trade or Pay a Competitive Price. Please send description, sketch, photocopy, etc to Paul Luchsinger, 2815 King Rook Ct, Williamsburg VA 23185 (757-345-3984)

Corkscrews & Tin Can Openers: Beer Openers for Trade. Joe Young, 36 S Weston Ave, Elgin IL (847) 695-0108

Corkscrews, Beer Advertising Letter Openers, Beer Advertising Knives, & Postcards depicting Corkscrews. Please send description, photo, sketch, photocopy, or tracing of what you have and advise price wanted. Don Bull, PO Box 596, Wirtz VA 24184, (540) 721-1128, E-Mail corkscrew@bullworks.net

Corkscrews: Esp. Walker's "Waiters & Hallboys" and old Williamson wire shafted "T"s with attachments to wood handle (such as brushes/wire cutters). John Vlossak, 1044 East Eldorado St., Appleton WI 54911, (414) 739-2789

Openers from Jamestown Brewing Co, Kuhn's Beer, Chau-tauqua Brew, Monessen, PA, Independent Brewing Co, Schaefer, & all Cleveland Beers. Ed Schaefer, PO Box 149, Maple Springs NY 14756, eschaeferbeer@juno.com

WANTED (Please remember there is no charge for Ads)

Figural Corkscrews and any WASHINGTON D.C. Openers and/or Corkscrews. Sandra Emme, PO Box 1454, Upper Marlboro MD 20773, (301) 627-8207

Joliet IL Openers: Citizens: B-14-97, C-17-69, E-1-32, E-3-12, E-4-175, K-5-6, O-10-1, P-121-1, Porter: A-17-24, B-18-594, B-18-618, B-21-199, F-6-9, Sehrings: B-21-561, G-9-39.
John Bitterman, E-Mail jebitter@aol.com

Minnesota Openers: A-1-73, A-21,63,77,128, A-29-22, A-33-5, A-45-1, B-7-3, B-13-12, B-17-9, B-18-330, B-21-322, O-1-1, O-2-14, P-7-13, P-146-1.
Pat Stambaugh, 718 S Lakeshore Dr, Lake City MN 55401

Montana & Idaho Beer/Brewery Openers & Breweriana. Also looking for H-8 & L-1 Openers to complete collection. Steve Armstrong, PO Box 741, Kamiah ID 83536,
E-Mail sunset@cybrquest.com

Montana Openers-Corkscrews: I need 39 of the 211 in the JFO Handbook. A-21-84,A-43-5,A-45-1,A-45-2---B-5-29,B-18-370,B-18-479,B-18-481,B-18-331,B-18-538,B-21-471,B-21-142,B-21-488,B-21-522,B-22-112,B-52-5---E-1-52,E-2-29,E-4-325,E-9-29,E-13-29---F-8-9---M-29-63---N-38-4---P-7-41,P-8-160,P-8-56,P-17-11,P-18-3,P-18-6,P-62-2,P-66-6,P-83-1. Will trade or purchase. Also interested in any Montana advertising openers (non-Beer). Bill Pattie, PO Box 1126, Big Timber MT 59011, (406) 932-5422

New York State Openers: E-4-345 Koch, G-1-67 Hupfel. Will Buy or Trade. Mark Barren, 6141 Tachi Dr., Newfane NY 14108-9517, (716) 778-9724

J-6s: 2-4-18-19-21-22-23-25-28-29-33-35-36-37-39-42-43-46-47, Will Pay \$4 Each plus Postage. Ollie Hibbeler, 535 Villa Piazza Ct, O'Fallon MO 63366

Pinney Beverage Items Wanted: Pens & Pencils, Bottle & Can Openers, Any item imprinted with **Pinney Beverage Company, Salt Lake City, Utah.** Dave Pinney, 1766 Red Barn Road, Encinitas CA 92024, (760) 753-8151, Email: davecent@tmisnet.com

Schlitz Openers: A-20-52,42,35,51, A-21-58,8,115,79, A-23-7, A-35-30,45. Will buy or possibly trade. Mike Krejci, W19103 Lake St, Aniwa WI 54408, (715) 449-3523, E-Mail pigpen1952@juno.com

Adler Brau Openers: B-18-491, E-4-262, H-11-1, I-17-259, N-83-1. D-9 Openers: #3, 5,9,10, 12, 14, 15, 16, 17, 18, 19. Also Looking for H-7 & H-11 Openers. Russ Adler, W11307 Cty Rd V, Lodi WI 53555-9628, (608) 592-5766

Starr Openers to trade, send for current list. Don Stinson, PO Box 105, 143 Haskins Point Road, Seeley's Bay, Ontario Canada, K0H 2N0, (613) 387-3100,
Email: rideaubreeze@bellnet.ca

I-7 Vaughan's Quick & Easy, I-7 45,82,46,79,84,78,54,30,55, 57,81,83. Also any Variations, Non-Beer & Generics. Have Traders/Cash. **Also H-3-34 Continental Can. Have I-7-28 New England for Trade.** Jim Pokrywka, 279 Pearl St, Seymour CT 06483, jimpokrywka@sbcglobal.net

Wisconsin Brewery Openers: Knapstein, Hortonville, Princeton, Hochgreve, Bleser, Shawano & Rahr; esp A-17-27 Rahr. Dan Mayville, E7446 County Road H, Fremont WI 54940-9747

E-14s 3,8,17,20,23,24,27,31,34,35,38,41,43,44,45. Darwin Miller, 32 La Canada Way, Hot Spring Village AR, 71909, 501-922-1615

FOR SALE

A-64-ul Miller High Life Friends of The Field 6.00

C-49-ul National Bohemian 7.50

C-49-ul Pabst(horizontal logo) 5.50

C-13-ul Frankenmuth Brewery/ Thanks for a Dog-gone Good Year 5.50

C-13-330 Frankenmuth 5.50

C-13-326 Breckenridge 4.00

R-54-1 Leinenkugel 9.00

Prices include 1st class shipping to US.

Mike Krejci

W19103 Lake St

Aniwa WI 54408

Personal check or money order

Just For Openers "Auction Guidelines"

Please Note: Fee of 20%

Will Be Charged on Consignments

This auction is a service to members of JFO. Submit consignments by sending a graded inventory list. Reasonable minimum bids can be established for good items. Any openers submitted for the auction should have a minimum value of \$3.00. Money realized will be sent 4 to 5 weeks after closing date.

Write First Before Sending Consignment Items. When Bidding Please! give the Lot Number and a Short Description with each bid.

Remember to at least sign your name on each auction page and keep a copy.

**SEND IN YOUR BID SHEETS EARLY
DO NOT WAIT!!!**

SELLING (Please remember there is no charge for Ads)

JFO Set Back Issues: 1978-1993 \$30 or 1994-2005 (\$30) (US Shipping Only) John Stanley, PO Box 64, Chapel Hill NC 27514

"American Breweries II": by Dale Van Wieren. **Over 18,000 entries for nearly 8,000 brewing firms, tracing names, addresses, and dates of operation. (\$19 Priority Mail).** John Stanley, PO Box 64, Chapel Hill NC 27514

2006 Handbook of United States Beer Advertising Openers and Corkscrews (contains 15,000 Listings & pictures 1100 Types (Black & White Copies)) . \$20 sent priority mail. John Stanley, PO Box 64, Chapel Hill NC 27514

2005 Inventory of Canadian Beer Advertising Openers & Corkscrews (contains 2,000 Listings & drawings for 250 Types (Black & White Copies)) . \$24 US sent book rate. George Vine, 219 Murray, Greenfield Park, Quebec, Canada J4V 1N5

"Just For Openers" "A Guide to Beer, Soda, & Other Openers" by Donald A. Bull & John R. Stanley, 160 Pages, 380 Color Pictures, \$26.95 plus \$3.95 shipping (US Only). Bullworks, PO Box 596, Wirtz VA 24184

"Soda Advertising Openers" by Donald A. Bull & John R. Stanley, 160 Pages, Over 275 Color Pictures & 2500 Listings, \$26.95 plus \$3.95 shipping (US Only). Bullworks, PO Box 596, Wirtz VA 24184

"Beer Advertising: Knives, Letter Openers, Ice Picks, Cigar Cutters and More" by Donald A. Bull, 180 Pages, Over 500 Color Pictures, \$26.95 plus \$3.95 shipping (US Only). Bullworks, PO Box 596, Wirtz VA 24184

"The Ultimate Corkscrew Book" by Donald A. Bull, Hardcover Book Weighs 5 Lbs, 744 Color Photographs, 3746 Corkscrews with Values, \$75.00 plus \$8.80 shipping (US Only). Bullworks, PO Box 596, Wirtz VA 24184

"Bull's Pocket Guide to Corkscrews" by Donald A. Bull, 190 Pages, Over 200 Color Photographs, 942 Corkscrews with Values, \$18.00 plus \$3.95 shipping (US Only). Bullworks, PO Box 596, Wirtz VA 24184

"Boxes Full of Corkscrews" by Donald A. Bull, 236 Pages, Over 836 Color Photographs, 95% New Information with Values, \$47.95 plus \$7.70 shipping (US Only). Bullworks, PO Box 596, Wirtz VA 24184

"ANRI Woodcarvings: Bottle Stoppers, Corkscrews, Nutcrackers, Toothpick Holders, Smoking Accessories and More" by Philly Rains and Donald A. Bull, 272 Pages, Over 800 Color Photographs picturing more than 2500 ANRI Carvings with detailed information, \$62.95 plus \$7.70 shipping (US Only). Bullworks, PO Box 596, Wirtz VA 24184

"Hometown Beer - A History of Kansas City's Breweries" by H James Maxwell & Bob Sullivan Jr, Hardback w/ 300 Pages, 585 Pictures (352 Color), \$39.95 Postpaid (US). H. James Maxwell, 1050 West Blue Ridge Blvd, Kansas City MO 64145-1216

"Figural Bottle Openers Identification Guide" by FBOC Club, 148 Pages, 67 Color Pages, with Rarity Guide, \$20.00 plus \$3.85 priority mail shipping (US Only). Lyle Moreland, 864 Jeanette Ave, Baltimore MD 21222

Newsletter Content and Deadlines for Sending in Articles and Receiving Newsletter

	January Issue	April Issue	July Issue	October Issue
Newsletter Content	New Additions to Handbook	Membership Directory	Convention Highlights	New Discoveries
Articles	December 1st	March 1st	June 1st	September 1st
To Members By	January 31st	April 30th	July 31st	October 31st

JFO AUCTION GUIDELINES

Send Bids To: John Stanley, PO Box 64 Chapel Hill NC 27514

Auction Rules

(Note: No Phone Bidding)

- 1) \$1.00 Minimum Bid on Each Lot, Only 1 Bid per Lot Allowed
- 2) Openers Sold to Highest Bidder (Identical Bids: Earliest Post-marked Bid Wins)

- 3) 7 Days to Return Openers if Not Satisfied, Shipping and Handling Extra
- 4) Openers Shipped Upon Payment (Please Pay within 7 Days of receiving Invoice) (Please make checks payable to: John Stanley)
- 5) Results Shown Next JFO Issue (Winning Bidders receive Results with Invoice)

Grading (G):

1-Poor 2-Fair 4-Good 6-Very Good 8-Excellent 9/10-Near Mint to Mint

(UL-Unlisted in 2005 Handbook (Full Wording Will Be Given) 999-Non USA Beer)

JFO # & Key Words (Brewery or Beer Name from Full Description) from 2005 Handbook of United States Beer Advertising Openers and Corkscrews

Results of October 2005 JFO Auction Closing November 23, 2005 Thanks to all 33 Bidders

1	A-001-014	Maltop NY	8	21.00	29	B-014-CAN	Calgary Brew- ing & Malting	6	2.01	64	B-023-086	Edelweiss IL	6	15.00
2	A-001-037	Golden Rib- bon CA	6	42.59	30	B-015-011	Brown Label CA	4	15.00	65	B-023-086	Edelweiss IL	6	8.00
3	A-005-010	Four Roses	4	6.01	31	B-017-001	Buffalo CA	6	17.80	66	B-024-001	Acme CA	6	3.01
4	A-007-021	Manhattan WI	6	16.77	32	B-018-017	Cooks IN	6	9.00	67	B-024-005	Burgermeister CA	4	5.00
5	A-009-004	Lesiy OH	6	24.77	33	B-018-021	Dicks IL	4	6.00	68	B-024-010	Dutch Club PA	4	3.01
6	A-012-001	Burgermeis-	4	12.77	34	B-018-022	Dubuque IA	4	7.00	69	B-024-016	Golden Glow CA	6	3.01
7	A-020-039	Wayne MI	9	6.30	35	B-018-055	Olympia / 7697	6	18.01	70	B-024-043	Hamms MN	6	12.50
8	A-023-001	Blackhawk	9	7.01	36	B-018-140	Leisy IL	4	24.00	71	B-024-044	Heileman WI	6	10.51
9	A-029-032	Butte Bot- tlers MT	6	6.30	37	B-018-146	Schiller Bros	4	8.00	72	B-024-055	Pointer IA	6	3.01
10	A-029-040	Reine CA	6	35.59	38	B-018-152	Aurora IL	6	26.50	73	B-024-063	Dicks IL	4	3.01
11	A-029-052	Independent	8	30.00	39	B-018-376	R I B IL	4	8.00	74	B-024-093	Edelweiss IL	6	3.01
12	A-030-004	Schotts IL	6	28.77	40	B-018-393	Hand IL	2	3.01	75	B-026-005	Spokane WA	4	30.00
13	A-035-004	Buffalo Var A CA	4	30.00	41	B-019-007	Dicks P IL	8	7.51	76	B-030-002	Capitol MO	6	20.00
14	B-005-030	Storz NE	6	21.77	42	B-019-017	Hamms MN	4	12.50	77	B-035-004	Storz NE	6	3.87
15	B-006-004	Columbia MO	4	16.50	43	B-019-038	Wieland CA	6	12.50	78	B-036-005	Atlas WI	4	12.50
16	B-008-007	Malt 55 (Add / Same)	6	35.59	44	B-019-060	Standard IL	4	18.00	79	B-038-014	Canadian	4	18.00
17	B-013-008	Heileman WI	4	3.01	45	B-019-062	Dicks Q IL	8	14.00	80	C-009-003	Blatz WI	4	1.05
18	B-013-016	Ambrosia IL	8	13.77	46	B-019-121	Fitgers MN	2	20.00	81	C-009-006	Edelweiss IL	6	0.68
19	B-013-058	Tip-Top PA	6	12.01	47	B-019-167	Highland IL	4	12.50	82	C-009-014	Edelweiss IL	4	0.68
20	B-013-113	Blue Ribbon PA	2	10.00	48	B-021-010	Coors CO	2	5.01	83	C-009-020	Buck IL	6	1.28
21	B-014-001	Atlas IL	4	2.01	49	B-021-013	Enterprise CA	4	14.01	84	C-009-023	Graf WI	6	3.87
22	B-014-013	Feckers IL	6	2.80	50	B-021-066	Tivoli MI	4	8.00	85	C-009-026	Schmidt MN	4	3.79
23	B-014-014	Frankenmuth MI	4	2.80	51	B-021-068	Radeke IL	4	5.51	86	C-010-002	American NY	9	5.00
24	B-014-015	Franklin OH	6	6.00	52	B-021-076	Schlitz WI	6	12.00	87	C-010-018	Piels NY	6	0.68
25	B-014-025	Grand Prize TX	8	2.80	53	B-021-211	Standard IL	4	12.50	88	C-010-020	Rochester NY	8	5.00
26	B-014-051	Graf WI	8	8.01	54	B-021-248	Gipps	6	13.00	89	C-010-024	A B C CA	6	1.28
27	B-014-118	Sand Springs MA	9	8.01	55	B-021-556	Edelweiss IL	6	30.00	90	C-011-009	Independent	8	8.29
28	B-014-999	Improved Crown Seal	4	3.01	56	B-022-010	Jung WI	9	15.00	91	C-011-016	General CA	8	8.29
					57	B-023-008	Ehrets NY	6	4.01	92	C-011-017	General CA	8	8.29
					58	B-023-012	Hardings IL	6	3.51	93	C-011-029	Graf WI	6	0.68
					59	B-023-018	Miller WI	6	2.99	94	C-011-999	Bon Ton Bev- erages	4	0.68
					60	B-023-020	Miller WI	8	5.00	95	C-012-004	Crema CT	6	3.87
					61	B-023-023	Oshkosh WI	2	3.07	96	C-012-018	National MD	8	0.68
					62	B-023-027	Schreiber NY	2	5.00	97	C-012-063	Simon Pure NY	6	0.68
					63	B-023-047	Ruff-Riedel IL	6	26.50					

Results of October 2005 JFO Auction Closing November 23, 2005 Thanks to all 33 Bidders



98	C-012-119	Franklin OH	6	1.28	129	C-018-009	Rolling Rock	6	0.68	164	E-004-179	Manitowoc WI	4	20.00
99	C-012-164	Brockert MA	8	30.00	130	C-019-002	Fort Pitt B PA	6	0.68	165	E-004-199	Trommers NY	4	0.68
100	C-013-002	Bartels NY	6	6.15	131	D-001-011	Blumers WI	8	1.88	166	E-004-316	Arrow IN	1	2.00
101	C-013-011	Camden NJ	9	16.29	132	D-001-019	\$1000 WI	4	1.28	167	E-006-012	Cold Spring	6	3.98
102	C-013-018	Cream City	6	5.16	133	D-001-033	Edelweiss IL	4	4.50	168	E-006-020	Eastside CA	6	2.00
103	C-013-019	Detroit MI	9	1.28	134	D-002-006	Schlitz WI	4	0.68	169	E-006-031	Hoffman NJ	6	4.50
104	C-013-023	Dubois PA	4	3.45	135	D-002-010	Perfection PA	4	1.08	170	E-006-032	Horton NY	2	3.01
105	C-013-034	Feckers IL	6	7.29	136	D-003-005	Terre Haute IN	2	1.00	171	E-006-035	Krueger NJ	9	0.68
106	C-013-037	Fitzgerald NY	6	1.08	137	D-003-013	Schoenhofen IL	6	11.40	172	E-006-045	Rochester NY	6	3.00
107	C-013-044	Fox Deluxe	6	5.16	138	D-004-006	Leisy A IL	8	3.87	173	E-006-051	Sunshine PA	6	0.68
108	C-013-058	Highland IL	6	5.00	139	D-005-002	Blatz WI	6	0.68	174	E-006-056	Wagner OH	4	0.68
109	C-013-062	K B IL	6	3.45	140	D-005-011	Point WI	4	0.68	175	E-006-058	A B C CA	6	6.50
110	C-013-063	Kings NY	8	4.00	141	D-009-008	Oshkosh WI	4	1.08	176	E-006-059	Als WI	6	4.11
111	C-013-107	Standard NY	4	4.00	142	D-009-011	Zollers WI	6	6.77	177	E-006-068	Columbia B	6	0.68
112	C-013-113	Tivoli MI	4	3.02	143	E-002-024	Diamond Spring MA	4	4.50	178	E-006-069	Coopers PA	6	3.00
113	C-013-118	White Eagle	6	6.50	144	E-003-007	Fox Head WI	6	4.11	179	E-006-071	Diehl OH	4	1.78
114	C-013-163	White Eagle IL	8	8.29	145	E-003-008	Griesedieck MO	8	1.38	180	E-006-072	Duquesne PA	6	7.01
115	C-013-188	Reisch IL	6	5.90	146	E-003-011	Hoosier IN	8	7.00	181	E-006-075	Eulberg WI	4	4.11
116	C-013-189	Rockford IL	8	8.00	147	E-003-013	Kamms (Copper) IN	8	1.88	182	E-006-078	Lucky Lager	2	2.01
117	C-013-199	White Eagle IL	6	8.29	148	E-003-021	Standard NY	8	0.68	183	E-006-082	Peerless WI	6	6.11
118	C-013-201	Birk Bros IL	8	3.45	149	E-004-005	Arrow IN	6	3.00	184	E-006-093	Wieland CA	4	2.11
119	C-013-222	Jung WI	4	3.89	150	E-004-006	Atlantic IL	6	3.25	185	E-006-099	Eilert OH	6	10.08
120	C-013-999	Orange	4	0.68	151	E-004-007	Atlas IL	8	4.00	186	E-006-105	Goetz MO	6	5.00
121	C-016-003	Krueger NJ	8	3.00	152	E-004-008	Atlas IL	6	7.77	187	E-006-108	Hop Gold WA	8	7.77
122	C-017-006	Gretz PA	6	3.89	153	E-004-010	Atlas IL	4	0.68	188	E-006-122	Sterling IN	2	0.68
123	C-017-012	Lebanon Valley PA	6	5.02	154	E-004-020	Centlivre IN	6	2.50	189	E-006-151	Star WA	2	3.01
124	C-017-013	Lebanon	4	0.68	155	E-004-025	Coors Var B CO	6	2.50	190	E-006-CAN	Red Ball Brewery Saint	8	0.68
125	C-017-033	White Eagle IL	9	3.00	156	E-004-033	Falls City KY	4	2.50	191	E-007-007	Goetz MO	6	3.25
126	C-017-036	Home VA	6	3.79	157	E-004-048	Humboldt WI	6	7.00	192	E-008-CAN	Red Ball Brewery Saint	6	0.68
127	C-018-001	Blatz WI	6	0.68	158	E-004-049	Independent IL	8	1.88	193	E-009-004	Blatz WI	6	0.68
128	C-018-006	Knickerbocker NY	8	3.00	159	E-004-050	Manitowoc WI	6	3.00	194	E-009-115	Schmidt (Copper) MN	8	5.00
					160	E-004-055	Lion NY	6	3.00					
					161	E-004-057	Manhattan IL	6	1.28					
					162	E-004-102	Atlas IL	4	2.50					
					163	E-004-108	Cooks IN	4	3.10					

Results of October 2005 JFO Auction Closing November 23, 2005 Thanks to all 33 Bidders


195	E-014-001	A B C (Copper) CA	8	1.28	228	E-014-324	Bluff City IL	6	7.00	262	G-003-003	Hamms MN	6	0.68
196	E-014-026	Blatz WI	9	0.68	229	E-014-333	Budweiser MO	9	5.00	263	G-003-005	Engelking IL	4	6.77
197	E-014-033	Bub MN	9	5.75	230	E-014-347	Diehl OH	6	3.11	264	G-003-007	Langs NY	6	3.66
198	E-014-040	Butte (Copper) MT	8	1.28	231	E-014-351	Drewrys IN	6	1.00	265	G-003-017	Graf WI	4	2.76
199	E-014-047	Cooks IN	9	3.78	232	E-014-359	Fisher UT	8	1.18	266	G-004-002	Blatz WI	6	0.68
200	E-014-060	Dubois PA	8	1.58	233	E-014-377	Hamms MN	8	5.00	267	G-004-003	Fredericks IL	6	2.77
201	E-014-063	Duquesne PA	9	1.28	234	E-014-391	Kiewels MN	6	2.01	268	G-004-006	Lithia WI	6	0.68
202	E-014-080	F & S PA	9	1.28	235	E-014-402	Mankato MN	9	6.50	269	G-004-009	E M S WI	4	3.76
203	E-014-101	Genesee NY	9	1.08	236	E-014-422	Potosi WI	6	4.11	270	G-004-014	Tavern Pale IL	6	0.68
204	E-014-125	Great Falls	6	7.00	237	E-014-508	Hauenstein MN	9	4.10	271	G-005-999	Coca-Cola GA	4	4.77
205	E-014-127	Griesedieck MO	6	1.18	238	E-014-515	Kamms IN	6	1.08	272	G-006-001	Bartels PA	6	0.68
206	E-014-133	Hamms MN	9	0.68	239	E-014-576	Ziegler WI	6	7.00	273	G-006-003	Flecks MN	6	0.68
207	E-014-145	Hensler NJ	6	5.75	240	E-014-579	American MD	6	0.68	274	G-006-005	Fort Pitt PA	8	0.68
208	E-014-155	Hudepohl OH	6	2.00	241	E-014-636	Schmidt MN	6	9.78	275	G-006-006	Gluek MN	8	0.68
209	E-014-166	Kingsbury WI	9	0.68	242	E-014-713	Pilsener OH	6	7.77	276	G-006-007	Gretz PA	4	0.68
210	E-014-174	Leinenkugels	6	0.68	243	E-014-726	Pickwick MA	6	3.11	277	G-006-008	Gunther MD	6	0.68
211	E-014-181	Mankato MN	8	1.08	244	E-014-738	Trommers Var A NY	9	8.55	278	G-006-013	Sunshine PA	6	0.68
212	E-014-185	Metz	8	1.18	245	E-014-793	Highlander MT	8	5.50	279	G-006-014	Walters WI	8	6.78
213	E-014-187	Miller WI	9	1.00	246	E-014-821	Pfeiffer MN	9	7.05	280	G-006-017	National MD	6	0.68
214	E-014-193	Muehlebach	9	1.08	247	E-014-822	Schmidt MN	8	1.01	281	G-006-019	Pickwick MA	6	4.55
215	E-014-200	Oldbru MI	4	13.78	248	E-015-002	Hand IL	6	0.68	282	G-006-023	National MD	6	5.78
216	E-014-222	Piels NY	9	5.75	249	G-001-008	Eblings NY	8	1.08	283	G-007-003	Fort Pitt PA	4	0.68
217	E-014-227	R & H NY	4	0.68	250	G-001-018	Old Reading PA	4	1.01	284	G-007-005	Gunther MD	6	0.68
218	E-014-241	Rhineland	8	1.28	251	G-001-024	Schaefer B NY	6	8.77	285	G-007-006	Harvard MA	6	0.68
219	E-014-246	Ruppert NY	8	1.18	252	G-001-040	Robin Hood NE	4	8.77	286	G-007-007	Holihans MA	2	0.68
220	E-014-251	San Antonio TX	4	5.00	253	G-001-044	Keeley IL	6	5.25	287	G-007-009	Pickwick MA	6	0.68
221	E-014-256	Schlitz WI	9	1.00	254	G-001- CAN	Black Horse Ale	6	0.68	288	G-007-010	Schmidts MN	6	0.68
222	E-014-259	Schlitz WI	9	0.68	255	G-002-001	Boston MA	4	2.01	289	G-007-011	Sunshine PA	8	4.01
223	E-014-264	Schmidts PA	9	0.68	256	G-002-003	Hampden MA	6	0.68	290	G-032-001	Lite WI	6	0.68
224	E-014-268	Shiner TX	9	0.68	257	G-002-004	Hampden MA	6	0.68	291	G-041-001	Rolling Rock	9	2.00
225	E-014-276	Stegmaier	8	4.00	258	G-002-005	Harvard MA	8	0.68	292	G-041-001	Rolling Rock	9	4.77
226	E-014-293	Wagner IL	6	1.28	259	G-002-006	Pennsylvania	8	7.00	293	H-004-001	Prima IL	6	5.99
227	E-014-305	Wooden	6	5.00	260	G-002-008	Hacker MA	8	7.00	294	I-007-013	Esslingers PA	6	0.68
					261	G-002-009	Hudepohl OH	8	0.68					

Results of October 2005 JFO Auction Closing November 23, 2005 Thanks to all 33 Bidders

295	I-007-015	Fort Pitt PA	6	0.68	322	M-013-001	Ballantine (Left) NJ	6	0.68	354	O-002-003	Flecks MN	8	12.52
296	I-007-021	Meister Brau IL C/K	8	22.00	323	M-015-001	Miller WI	6	6.52	355	O-003-001	Valley Forge (MIB) PA	9	12.03
297	I-007-024	Krueger NJ C/K	8	4.00	324	M-016-001	Budweiser MO	9	3.00	356	P-001-013	Leopold IL	4	21.52
298	I-007-026	Miller WI C/K	6	0.68	325	M-017-001	Budweiser MO	6	1.01	357	P-006-001	F & S PA	8	9.00
299	I-007-032	Pabst WI C/K	8	0.68	326	M-018-001	Budweiser MO	6	0.68	358	P-007-006	Stegmaier PA	6	30.02
300	I-007-032	Pabst WI Q/E	6	0.68	327	M-019-022	Schlitz WI	8	1.00	359	P-008-145	American MO	8	6.00
301	I-007-033	Pabst WI C/K	4	0.68	328	M-021-001	Rainier WA	4	1.00	360	P-014-013	Griesedieck MO	4	5.00
302	I-007-036	Ruppert NY	4	0.68	329	M-023-002	Stag MO	6	4.55	361	P-015-004	Grain Belt MN	6	32.01
303	I-007-038	Schmidt MN	6	0.68	330	M-024-001	Coors CO	9	0.68	362	P-019-002	Townsend MT	6	5.00
304	I-007-079	Frederick Bros	4	61.00	331	M-025-001	Lemp MO	6	32.02	363	P-020-003	Blatz WI	4	1.98
305	I-009-001	Waldorf OH	6	3.26	332	M-029-007	Sterling IN	6	0.68	364	P-021-003	Griesedieck MO	9	5.00
306	I-009-002	Fox Deluxe IL	4	1.99	333	M-030-032	Falstaff NE	6	0.68	365	P-036-002	Metz NE	4	11.77
307	J-007-002	Coors CO	6	2.50	334	M-031-001	Sterling IN	6	5.03	366	P-043-005	Strohs MI	4	5.00
308	J-009-001	Coors CO	8	3.10	335	M-032-002	Pabst (w/ Box)	8	8.51	367	P-054-012	Montreal KY	8	40.00
309	J-010-001	Pabst WI	4	4.77	336	M-033-002	Jax LA	6	1.75	368	P-066-010	Blatz Var A	4	16.51
310	K-004-001	Pabst (Var B) Min \$75	6	137.77	337	M-034-006	Lite WI	9	5.00	369	P-128-001	Hemrich (Missing Corkscrew) WA	4	40.01
311	L-004-068	Southern Select TX	8	42.59	338	M-036-005	Schreiber NY	6	10.00	370	P-154-001	Titletown WI	9	10.78
312	L-016-003	Miller WI	9	4.55	339	M-039-001	International	8	10.00	371	Q-003-001	Olympia WA	6	0.68
313	L-016-004	Millstream IA	9	11.09	340	M-040-001	Oshkosh WI	9	6.00	372	R-012-001	Schlitz WI	4	9.01
314	M-001-006	Hudepohl OH	6	26.52	341	M-043-004	Lite WI	9	1.00	373	R-019-005	Iron City PA	8	4.00
315	M-002-004	Harvard MA	6	26.52	342	M-044-001	Storz NE	8	13.77	374	Z-999-ZZZ (Excludes Min Lots)	Bid for Lots Receiving No Bids (< 1.00)		0.68
316	M-004-002	Blatz WI	6	0.68	343	M-045-001	Graf WI	6	1.08					
317	M-005-001	Tivoli CO	6	11.77	344	M-047-001	Arnholt (Hole in Handle) PA	2	5.00					
318	M-009-001	Ballantine NJ	9	5.00	345	M-051-007	Rheingold NY	2	3.66					
319	M-010-002	Ballantine NJ	4	0.68	346	M-054-001	Strohs MI	9	3.00					
320	M-011-001	Ballantine NJ	8	0.68	347	M-054-008	Goetz MO	9	3.00					
321	M-012-001	Ballantine NJ	6	3.27	348	M-060-008	Stag MO	4	30.00					
					349	M-064-001	Stag MO	6	10.77					
					350	M-066-001	Schlitz WI	6	1.00					
					351	M-076-001	Schlitz (MIB) WI	9	30.00					
					352	M-127-001	Saranac NY	9	14.77					
					353	M-145-001	New Belgium CO	9	10.77					

We are buying  for our private collection 

DORIS & BOB MOSIER
 17424 Jordan Road
 Saegertown, PA 16433
 1-814-763-4819
 FAX 1-814-763-1567



BCCA
BREWERY COLLECTIBLES CLUB OF AMERICA®

"BOB"
 Robert W. Post #1685
 President

(H) 605-339-0269 pst@sio.midco.net

JFO Auction Closing February 22, 2006: Name & #:

1	A-001-002	Aurora IL	4		29	B-013-018	Graf WI	6		57	C-001-003	Schoenhofen (1916 Patent Date) IL	4	
2	A-004-002	National IL	6		30	B-013-999	Collins Combination Cork-	6		58	C-004-001	Pabst WI	4	
3	A-004-009	Leisy IL	4		31	B-013-999	The Bowman	6		59	C-005-001	Pabst Pablo	2	
4	A-004-009	Leisy IL	6		32	B-014-119	Zoller IA	8		60	C-009-004	Bruckman OH	6	
5	A-005-010	Four Roses	4		33	B-018-022	Dubuque IA	6		61	C-010-020	Rochester NY	8	
6	A-005-012	National IL	6		34	B-018-023	Dubuque IA	4		62	C-011-002	Independent WI	6	
7	A-007-022	Schlitz	6		35	B-018-117	Schmidt Var B	4		63	C-011-999	Bon-Ton Bottled Bever-	6	
8	A-009-009	Fremont NE	6		36	B-018-119	Schwarzenbach PA	6		64	C-013-058	Highland IL	6	
9	A-009-017	Schell MN	6		37	B-018-677	Evans NY	9		65	C-013-118	White Eagle IL	8	
10	A-013-999	La Grange Auto Station Keck Prop Phone 28	4		38	B-019-062	Dicks Q IL	9		66	C-013-163	White Eagle IL	6	
11	A-013-999	The Belleville Garage Geo Sahlender, Prop Belleville IL	6		39	B-021-068	Radeke IL	6		67	C-013-199	White Eagle IL	6	
12	A-020-039	Wayne MI	4		40	B-021-999	Hygeia Mfg Works Lynch Prop Farmington Wva	4		68	C-013-201	Birk Bros IL	6	
13	A-021-005	Duquesne PA	6		41	B-022-128	Old Style WI	6		69	C-013-317	Strohs / JFO	9	
14	A-021-010	Ziegler WI	8		42	B-023-086	Edelweiss IL	8		70	C-015-007	Piels (On Original Card)	8	
15	A-021-011	Cataract NY	6		43	B-023-128	American Malt IL	8		71	C-016-007	Rolling Rock PA	6	
16	A-021-016	Atlas Kingsbury	4		44	B-023-168	American Malt	4		72	C-016-010	Schaefer NY	8	
17	A-021-999	Royal Cabs	8		45	B-023-176	American Malt	8		73	C-017-033	White Eagle IL	8	
18	A-025-009	Schoen IL	8		46	B-024-001	Acme CA	6		74	C-018-015	Fort Schuyler	4	
19	A-026-003	Schoenhofen	6		47	B-024-005	Burgermeister CA	6		75	C-019-009	Bavarian	9	
20	A-029-003	K-B IL	6		48	B-024-016	Golden Glow	4		76	C-028-001	Mound City IL	4	
21	A-029-009	Schlitz WI	4		49	B-024-055	Pointer IA	4		77	C-028-003	Mound City IL	6	
22	A-029-018	Pabst WI	6		50	B-024-090	Atlas IL	6		78	C-031-999	Niles & Moser	6	
23	A-029-999	Cermak For U S Senator For Beer & Wine IL	6		51	B-024-093	Edelweiss IL	8		79	C-041-CAN	Orange Crush / Gurds	8	
24	A-070-001	Cooks IN	4		52	B-024-999	Seagrams / Whiskies Since 1857	6		80	C-042-001	Busch MO	9	
25	B-005-030	Storz NE	4		53	B-029-052	Budweiser Great Falls MT	8		81	C-045-024	Adams MA	9	
26	B-013-001	Ambrosia IL	9		54	B-030-999	Glen Rock Bot Works Waukegan IL	4		82	C-048-001	Harpoon MA	9	
27	B-013-006	Griesedieck Bros MO	4		55	B-033-001	Edelweiss IL	4		83	C-051-001	Celis TX	9	
28	B-013-011	Storz NE	6		56	B-035-004	Storz NE	6		84	D-004-006	Leisy Var A IL	6	
										85	D-004-006	Lesiy Var B IL	6	
										86	D-006-001	Brucks OH	6	
										87	D-009-011	Zoller IA	6	

JFO Auction Closing February 22, 2006: Name & #:

286	H-005-009	Neuweilers PA	6		312	K-003-001	Rheingold NY	6		343	M-100-001	Genesee NY	4	
287	H-006-005	Pabst WI	6		313	L-001-001	Blatz WI	6		344	M-102-001	Budweiser MO	9	
288	H-007-002	Blatz WI	4		314	L-001-002	Budweiser MO	4		345	M-106-001	Michelob MO	9	
289	H-008-003	Duquesne PA	4		315	L-001-004	Miller B WI	6		346	M-113-001	Lone Star TX	9	
290	H-008-011	Pabst WI	6		316	L-001-006	Knickerbocker NY	6		347	M-118-001	Widmer PA	9	
291	H-008-014	Pabst / Pabst WI	6		317	L-002-057	Canadian Cream NY	2		348	M-119-001	Budweiser	9	
292	H-008-020	Globe MD	4		318	L-004-051	Blatz WI	4		349	M-121-001	Budweiser MO	9	
293	H-011-001	Adler Brau WI	4		319	L-009-001	Budweiser Var B	9		350	M-141-001	Coors CO	9	
294	I-007-013	Esslingers PA C/K	6		320	L-012-001	Budweiser MO	9		351	M-147-001	Miller Lite WI	9	
295	I-007-014	Feigenspan NJ C/K	6		321	L-012-002	Bud Light MO	9		352	N-009-033	Climax VA	8	
296	I-007-016	Fox Deluxe (Copper) IL C/K	6		322	L-014-002	Bud Light MO	9		353	N-009-999	Schmidt & Ault Paper	6	
297	I-007-016	Fox Deluxe IL C/K	8		323	L-018-003	MGD WI	9		354	N-038-999	Michigan	8	
298	I-007-017	Genesee NY C/K	6		324	M-001-002	Haffenreffer MA	8		355	N-067-999	Skyline Bar	6	
299	I-007-024	Krueger NJ C/K	8		325	M-003-005	Edelweiss (No Paint) IL	4		356	N-108-001	Yuengling	9	
300	I-007-032	Pabst A WI Q/E	8		326	M-003-016	Barbey (No Paint) PA	4		357	O-005-007	Lucky Lager	4	
301	I-007-032	Pabst B WI	6		327	M-004-002	Blatz WI	8		358	P-014-UL	Grain Belt Beer L. Beal - Inc.	6	
302	I-007-038	Schmidt (Copper) MN	6		328	M-010-002	Ballantine NJ	6		359	P-019-020	Cincinnati	6	
303	I-007-056	R & H NY C/K	8		329	M-012-001	Ballantine NJ	4		360	P-047-999	Lowenbrau	8	
304	I-007-999	Lubricate With Penn Bond & Blue Seal PA V	6		330	M-018-001	Budweiser MO	8		361	R-003-004	Iroquois NY	6	
305	I-008-001	Fox IL	6		331	M-029-016	Storz NE	6		362	R-015-001	Bud MO (w/ Box)	9	
306	I-009-001	Waldorf OH	6		332	M-030-999	Me and My RC	9		363	R-016-001	Bud Dry MO	8	
307	I-021-001	Stegmaier	4		333	M-032-001	Pabst	6		364	R-029-001	Miller WI	9	
308	I-022-027	Canadian Ace IL	6		334	M-034-001	Drummond Bros	6		365	R-033-001	Budweiser	9	
309	I-024-001	Fox Deluxe IL	6		335	M-039-008	International	6		366	R-045-UL	Bud Light MO	9	
310	J-010-001	Pabst WI	6		336	M-042-001	Carling OH	6		367	X-005-001	JFO 12 NC	8	
311	J-011-001	Schlitz WI	9		337	M-043-004	Lite WI	8		368	X-007-001	JFO 16 PA	9	
					338	M-082-001	Budweiser WI	9		369	X-011-001	JFO 21 #57 FL	9	
					339	M-083-009	Millstream IA	9		370	X-012-001	JFO 22 IL	9	
					340	M-090-008	Lakefront WI	9		371	Z-999-ZZZ	Bid for Lots Receiving No Bids (< 1.00) (Excludes Min Lots)		
					341	M-092-001	Michelob Dry MO	6						
					342	M-097-004	Old Slugger NY	9						

JUST FOR OPENERS

28th ANNUAL CONVENTION REGISTRATION APRIL 19-23, 2006

Holiday Inn Select Opryland/Airport (Nashville TN 37214)
2200 Elm Hill Pike
1-800-HOL-IDAY (National) or 1-615-883-9770 (Local)

(Rate is \$79.00 for a Single, Double or Quad)
(Rate Good for 3 Days Before and 3 Days After Convention)
(Hotel Cutoff Date is March 20th 2006)

(Tell them you are with the **Just For Openers Group**)
MAKE NASHVILLE YOUR NEXT STOP ON THE JFO CONVENTION TRAIL

MEMBER REGISTRATION FEE - **\$40.00**
(MEMBER INCLUDES HOSPITALITY ROOM, CONVENTION OPENER & 1 SHOW TABLE)
SPOUSE/PARTNER - **\$10.00 (Total Member & Spouse/Partner \$50)**
(SPOUSE/PARTNER INCLUDES USE OF HOSPITALITY ROOM) (NOTE:CHILDREN ARE FREE)

NAME _____

ADDRESS _____

CITY _____ STATE(PROVINCE) _____ ZIP _____

EVENING PHONE NUMBER _____

DATE YOU WILL ARRIVE _____ APPROXIMATE TIME _____

DATE & TIME YOU WILL LEAVE _____ (NEED FOR PLANNING PURPOSES)

HOW WILL YOU ARRIVE? CAR _____ PLANE _____ TRAIN _____ OTHER _____

IF PLANE? AIRLINE _____ FLIGHT # _____ ETA _____

NAME(S) FOR CONVENTION BADGE(S): _____

HOSPITALITY ROOM DRINK Brands: Beer: _____ Soda/Water: _____

MAKE CHECKS PAYABLE TO John Stanley, Send Checks to:
JFO 28 PO Box 64 Chapel Hill NC 27514
Phone (919) 419-1546

***** **BRING A DISPLAY !!!** *****

“28th Just For Openers Convention Registration (Page 2)”

Convention Wish List

**List up to 10 Openers/Corkscrews,
Send in with Registration Form,
A master list will be in the April JFO**

01) _____	06) _____
02) _____	07) _____
03) _____	08) _____
04) _____	09) _____
05) _____	10) _____

**The 28th JFO Convention is Going to be a Thrill
It's in the Fun City of Nashville**

**Come With Music in Your Soul
With Plenty of Openers in Tow
And You Will Get to See the Great Don Bull**

**Enjoy the Friendships that have Grown Over the Years
With Those People we have Shared Laughter and Tears**

**You Will Leave with a Song in Your Heart
And a Bigger Love for Openers than You Had at the Start**

**Don't Forget to Bring an Opener Display
Without Those we Would be Dismayed**

**Pat, John and Corkie Will Be in the Hospitality Room
Hope to See You There Very Soon!!!**