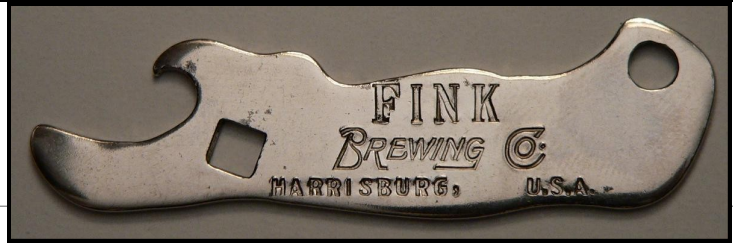


# Just For Openers JAN 2007 Issue #113

## A-53-3 Fink Brewing

Once again I thought I had the only one known and another was sold on eBay this past quarter. Mine came from a late 1980s Lynn Geyer Auction and it was out of a Salesman's Sample Kit. It is mint condition.



Copyright 2007

John Stanley

PO Box 64

Chapel Hill NC 27514-0064

(919) 419-1546

Web Site

[www.just-for-openers.org](http://www.just-for-openers.org)

Past Editors:

Don Bull (1979-83)

Ed Kaye (1984-88)

Art Santen (1989-1993)

Annual Dues \$20.00

Use PayPal at

[jfo@mindspring.com](mailto:jfo@mindspring.com)

Renewal Due Date: 3/31/07

Opener & Corkscrew Books  
(details in Selling Ads)

2007 Handbook of United States Beer Advertising Openers & Corkscrews by Bull, Kaye & Stanley

"Just For Openers" "A Guide to Beer, Soda, & Other Openers" by Donald A. Bull & John R. Stanley

"Soda Advertising Openers" by Donald A. Bull & John R. Stanley

"Beer Advertising: Knives, Letter Openers, Ice Picks, Cigar Cutters and More" by Donald A. Bull

"The Ultimate Corkscrew Book" by Donald A. Bull

"Bull's Pocket Guide to Corkscrews" by Donald A. Bull

"Boxes Full of Corkscrews" by Donald A. Bull

"ANRI Woodcarvings: Bottle Stoppers, Corkscrews, Nutcrackers, Toothpick Holders, Smoking Accessories and More" by Philly Rains and Donald A. Bull

Inventory of Canadian Beer Advertising Openers & Corkscrews by George Vine

## 2007 JFO Convention #29 April 25-29 Harrisburg PA

Just three and a half months until the 29th JFO Convention begins. The convention registration form is the last two pages of this issue. If there is even a remote chance you will be attending please go ahead and reserve a room before March 25th at 1-717-774-2721 (the hotel) or 1-888-HOLIDAY. The hotel should have plenty of rooms available but as in past years waiting until the last minute may leave you out in the cold. Take a few minutes now to guarantee a room for this year's convention.

Ben Hoffman, Harold Queen and David Hoffman (no relation to Ben) are lining up a great show. The show schedule is room-to-room trading Wednesday and Thursday followed by a trip to the Rennigar's Flea Market on Friday and a short Auction that evening (maybe late afternoon). Saturday is the public show from 8AM to 1PM. Registration starts officially Wednesday after lunch and for the most part the hospital room is open from then until late Saturday night. Members who stay Saturday night can plan on participating with a group supper that evening. So don't miss out, make your hotel reservations now. Start packing all of your openers and corkscrews to bring to Harrisburg. Pennsylvania is a great state to visit. BE THERE!!!!

## Corrections to the October Issue

My apologies for listing the website for the new R-62-1 Turtle opener incorrectly in the last issue. The website is [www.terrapinbeer.com](http://www.terrapinbeer.com) but the web site only sells the opener with "Black and Tan" a Guinness product. You must call them at 1-888-557-BEER to get the opener with their company name.

The C-67 Budweiser guitar opener was actually a belt buckle. So not to lose a number, a new Miller guitar opener was made a C-67 and the Budweiser belt buckle was made a N-145.

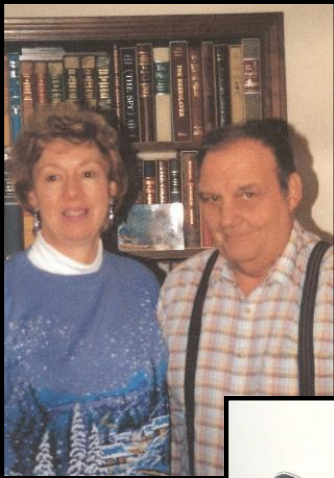
Thanks to Art Johnson for pointing out these corrections. If anyone sees mistakes in the "UL"s in this issue please let me know by the end of January as I will load the new Handbook out on the JFO website at that time.

If you have any New Discoveries or Additions please bring them to Harrisburg!

## Gary Bauer Passes Away at Age 44 10/23/2006

JFO member, Gary Bauer, passed away in October after suffering a heart attack while on his exercise bike. Gary was a serious collector of all Michigan Breweriana. Along with wife Barb he attended many breweriana shows and they were always very positive and happy people to be around. In recent years Gary sent in many "UL"s from Michigan and was always looking for that opener or corkscrew not in his collection. As a tribute to Gary on the next page, I have pictured a few nice Michigan openers. Our sympathy goes out to Barb and the family.





**Update on the Bill Pattie Collection**

It was just after I sent out the last newsletter that I decided to call Lyla Pattie to get her to send a nice picture of Bill (Lyla and Bill pictured on the left). During the conversation she told me the buyer I mentioned in the October newsletter had backed out and the collection is still for sale. In fact she let one local collector buy some openers as no one wanted to buy the collection as a whole. We eventually worked a deal for me to buy the M-73 collection (12 beer and 1 non-beer). Bill had one of the few known complete collection of M-73 Montana beer sliders. Along with payment I sent Lyla a want list of about 25 other openers but she had some pressing family matters to deal with and did not know when she would write back. I told her to not rush and whenever she got a chance to let me know but as of this newsletter I have not heard back.

**A Final Tribute to Gary Bauer Michigan Openers & Corkscrews**

- 1) A-9-14 Wayne
- 2) A-13-4 Pfeiffer
- 3) A-28-5 Bay City
- 4) A-28-8 Biewer
- 5) B-9-9 Petersen
- 6) B-23-123 Delta
- 7) P-26-4 Strohs
- 8) P-74-2 Escanaba
- 9) F-16-3 Frankenmuth
- 10) E-27-9 Strohs
- 11) E-27-10 Pfeiffers
- 12) D-22-1 Marx



# Spouse's Corner

By Pat Stanley, the Editor's Spouse

My last contribution to the JFO newsletter was written in the air on the way back from San Francisco with a few additional notes after we picked up Jazzy and Snazzy before even coming home from the airport.

They were five months old yesterday (12-29-06) and life has changed! They are currently resting behind me in a crate that occupies the space I had made in my office for a little sewing center. It's like this. When John goes to bed at 9 each evening, he wanted me to move my laptop into the kitchen, the "girls" usual playground, so I would be with them. Now that's a little inconvenient, no printer...nothing I need close at hand. So Jazzy and Snazzy and I went to Petco for help and found this neat soft crate that will also be perfect for JFO trips!

Now there have been bigger sacrifices than this. We have two play pens in the kitchen. We started out with one six-sided play pen, but the trainer who comes to our home expressed concern about some aggression between the siblings, so we got an extension kit and now have two four-sided play pens. Both configurations give me about 18 inches around them to prepare meals. Round and round I go from sink to stove to dishwasher to wherever. I'm more efficient in planning what I need on what part of the circle.

The vet's technicians said they are difficult when getting their nails trimmed, so they charge \$16 per puppy. Well there was a reason we took them to the professionals to trim after our second team approach at home. John did well the second day we had them home though he thought 40 nails was a bit much. The next attempt, they fought us and so it goes.

I know you are wondering, why we think this is fun. They are as cute as they can be and we are absolutely in love with them!!

For littermates, they are surprisingly different, one is much bigger than the other, one has a long nose while the other is short and one has coarse fur while the other is soft and fine. The bigger one is the one scared of everything while the little one is much more easy going. If you put the little one beside you on the sofa, she curls up quietly beside you while the bigger one bounces around like a little kangaroo.

Right now they are on medicine for three weeks because of their interest in something one night in the dark that turned out to be a dead mouse. Remember, I work for a vet who cares for research animals, so I asked him if I needed to be concerned other than I did not want to be licked in the face anytime soon. I had not thought about the fact that the mouse many have been poisoned, so upon his advice I called my vet immediately to get precautionary medicine. He was glad to see them as he always kneels down on the floor and plays with them for which he gets paid. Fortunately I took out pet insurance that helps when you have two little sweethearts. After all I wouldn't want to cut into John's opener funds.

I hope you don't mind my diversion from openers in this newsletter, but my world revolves around other things. Hopefully, you will find some humor in my column.

2007 promises to be a very busy year for me at work as our Division will more than double in size and implements a new accounting system along with a few other major projects. So I won't have time to focus on new material for Spouse's Corner and will only be able to tell you what goes on while John is absorbed in openers and watching sports, 24 and CSI.

Anyone who has been at JFO when Corkie was with us knows that John puts our pets up pretty high on his list of favorites, higher than me but not quite as high as openers.



**Spouse's Corner (continued)**

JFO will be a great break for me from the whirlwind at work. And it always seems to arrive quickly after the holidays, so make your plans now to be in Harrisburg with us. The convention opener is really neat. Each year I think they can't beat the year before, but Wow is all I can say. I like it!!

Well, it's time to take the girls out for their last potty break tonight. It works out well for them to live with a night owl and one of those sickening morning people who jump out of bed alert and focused.

May You Find the Opener You've Always Dreamed of in 2007 at JFO!!!

Editor's Note: Picture at the right was taken in early January, Snazzy is on the left and Jazzy on the right. Snazzy ("the runt") is 8 pounds and Jazzy is 10 pounds. They said to let everyone know to bring lots of openers and corkscrews to Harrisburg.



**Newsletter Content and Deadlines for Sending in Articles and Receiving Newsletter**

	January Issue	April Issue	July Issue	October Issue
<b>Newsletter Content</b>	<b>New Additions to Handbook</b>	<b>Membership Directory</b>	<b>Convention Highlights</b>	<b>New Discoveries</b>
<b>Articles</b>	<b>December 1st</b>	<b>March 1st</b>	<b>June 1st</b>	<b>September 1st</b>
<b>To Members By</b>	<b>January 31st</b>	<b>April 30th</b>	<b>July 31st</b>	<b>October 31st</b>

**January New Members, Renewals, Address Changes & Corrections**  
**Just For Openers Current Members: 253 (New Member Numbers 1100-1102)**

#	Last Name	First	Spouse	Street	City	St	Zip	Phone	E-Mail	Opener Specialties (Sponsor)
939	Clark	Bill	Terrie	689 Center Ave	River Edge (Address Change)	NJ	07661-2406	201-262-7397	terrie-clark@optonline.net	US Beer, Soda, Cast Iron Figurals, Starr & Wall Mounts, Foreign
1101	Cutting	Robert	Amanda	5025 Wrangler Dr	Winston-Salem	NC	27101-6442	336-750-0921 C336-671-0057	cutting-spicer@triad.rr.com	General; Interesting Advertising Piece, esp Artistic Ones (Ben Hoffman)
333	Gauvin	Paul	Gail	4 Rosedale Rd	West Bath (Address Change)	ME	04530-6447	207-443-5286	pl@gauvin@yahoo.com	Connecticut Beer, Soda, Starr & Wall Mounts
1102	Kaish	Richard		10 Monument Neck Rd	Buzzards Bay	MA	02532-4112	508-759-9019 F508-759-9019	rkai-sh10blue@aol.com	Corkscrews (Artist Creating Hand-crafted Corkscrews) Don Bull
1100	O'Connor	Jim	Alina	7801 SW 95th St	Miami	FL	33156-7508	305-273-0318 F305-273-0319	joaquatics@zol.com	General, US Beer, Cast Iron Figurals (JFO WWW)
695	Reynolds	Susan		2117 21st Ave S	Birmingham	AL	35223-1716	205-871-4348 C205-305-3449 F205-871-2137	sreynolds@progressiveag.org	"A"s of Any Kind (Rejoin)

**New Discoveries to the 2006 Handbook II**

C-67 BUDWESIER (DELETE RELISTED AS N-145)

C-67  
CAP LIFTER/GUITAR (SEE C-42)  
5 1/2"

- HAROLD QUEEN  
1. MILLER LITE GREAT TASTE GREAT MUSIC (TRUE PILSENER BEER IN LOGO)



C-73  
CAP LIFTER (SEE C-49 & C-62)  
4 3/4"

- OLLIE HIBBELER/ART JOHNSON/ART SANTEN  
1. BUD (C LOGO) LIGHT / SAME  
2. BUDWEISER (IN BOWTIE) (CROWN) / SAME  
3. (CROWN) BUDWEISER SELECT / SAME



M-160  
CAP LIFTER  
3 1/2"  
MIKE KREJCI

1. MILLER HIGH LIFE (GIRL ON THE MOON) (MAGNET ON BACK)



N-145  
BELT BUCKLE/CAP LIFTER  
5"

- ART JOHNSON/MIKE KREJCI  
1. BUDWEISER (B CROWN LOGO) TRUE MUSIC



G-94  
CAP LIFTER  
(CURVED HANDLE)  
4 3/8"

- MIKE KREJCI  
1. COORS FINE LIGHT BEER (MOUNTAIN LOGO)



**N-146**  
**BELT BUCKLE/CAP LIFTER**  
 (BUCKLE IS FLAT "C" STYLE OPENER)  
 3 5/8" (36" WITH CLOTH BELT)

- MIKE KREJCI**  
 1. MILLER GOOD TIME



**R-61**  
**SOCCER PLAYER WITH BALL**  
 2 1/16"

- MIKE KREJCI**  
 1. (CROWN) BUDWEISER OFFICIAL PARTNER OF THE  
 2006 FIFA WORLD CUP / (FIFA LOGO) FIFA TM



**R-62**  
**TURTLE**  
 5 5/8"

- MARC BENJAMIN**  
 1. TERRAPIN BEER CO. ATHENS, GA  
[WWW.TERRAPINBEER.COM](http://WWW.TERRAPINBEER.COM) US PATENT D0470370 /  
 TERRAPIN (ON TAIL)



**JANUARY 2007 ADDITIONS & CORRECTIONS TO 2006 HANDBOOK  
 (COPYRIGHT JANUARY 2007 JOHN STANLEY)**

**A-3**

59. STONE MALT CO CLEVELAND, OHIO THREE STORES

**A-5**

133. FLINT MALT CO. FLINT, MICH.  
 134. LIBERTY MALT CORP. 1828 GRATIOT CAD. 5653  
 135. THE WESTERN BOTTLE CO. HOME BOTTLING SUPPLIES  
 819 WADE ST. WEST 228-4436

**A-7**

45. C. & M. MALT CO. 438 E. FEDERAL ST. 22 SO.  
 CHAMPION ST.  
 46. MALT PRODUCT CO. PHONE 8214 37 SOMERSET ST.  
 PAINFIELD, N. J.

**A-15**

73. INTERSTATE BREWING CO. SIOUX CITY, IOWA NU-  
 LIFE BOTTLED BEER / DRINK AUSWAHL BRAU INTER-  
 STATE BREW CO

**A-17**

51. NEEDHAM'S MALT SHOP 375 1/2 MANTON AVE. TEL.  
 WEST 5543

**A-19**

4. LONE STAR BRWG. SAN ANTONIO, TEX. / "ALAMO"  
 THE BEER AHEAD

**A-20**

54. DRINK TRAINER'S BEER BEST OF ALL PHILADEL-  
 PHIA, PA.

**A-21**

150. BUDWEISER & FALSTAFF RED TOP ALE L. M. KALIN  
 DISTRIBUTOR  
 151. HUND & EGER (SEE N-62-1)

**A-28**

67. VITO A. DEL VECCHIO BOTTLER WINES & LIQUORS  
 TANNHAEUSER BEER 924 PASSYUNK AVE. PHILADEL-  
 PHIA.

**A-29**

114. JAX / DRINK FAMOUS JAX BREW PHONE PR. 9612  
 115. MICHIGAN MADE MALT JOHN H. FORLER NILES,  
 MICH.  
 116. MALT-BOTTLES-KEGS MILLER BROS. COR. ELEVENTH  
 AND PARADE ST.  
 117. PRIMA PRODUCTS LOUISVILLE BEVERAGE CO. EAST  
 1257

**A-40**

3. HOME BREWING CO.

**A-42**



26. DRINK PEARL BEER  
**A-52**
8. BLUE RIBBON MALT EXTRACT ATLANTIC FOOD PRODUCTS CO. 5308 MARKET ST.  
**A-58**
15. SLO BREWING CO FINE ALES (SAN LUIS OBISPO)  
**A-65**
8. MILLER LITE (ON BODY LABEL) MILLER LITE (ON NECK LABEL)
9. PETE'S WICKED ALE (ON BODY LABEL) WICKED ALE (ON NECK LABEL)  
**A-67**
2. NEW BELGIUM FORT COLLINS, COLORADO USA  
WWW.NEWBELGIUM.COM / FAT TIRE AMBER ALE (PIC OF BICYCLE)  
**A-70**
4. "THE MASTER'S MASTERPIECE" GREY EAGLE MALT COMPANY SPRINGFIELD, OHIO  
**A-81 SANDAL CAP LIFTER 2 5/8"**  
**MIKE KREJCI**
1. BUDWEISER (IN BOWTIE) (CROWN) KING OF BEERS  
**A-82 BALL CAP LIFTER 2 5/8"**  
**MIKE KREJCI**
1. COORS BANQUET SINCE 1973 (LOGO) / BANQUET BREWED WITH ROCKY MOUNTIAN WATER  
**A-83 BOTTLE/BOX CAP LIFTER/TAB POPPER 3"**  
**JOHN STANLEY**
1. MILLER LITE RUSTY WALLACE 2 BOTTLES CANS PATENT PENDING  
**B-2 CORRECTIONS**
8. **ASK FOR MENK'S BOTTLE BEER (07,339)**  
**B-5 CORRECTIONS**
31. ROYAL BREWING CO. KANSAS CITY & WESTON, MO. ROYALS **IS** RIGHT / OUR BRANDS ROYAL BEER VIVATONE **BREW MALT** (07,149)  
**B-13**
137. BLUE RIBBON MALT & HOPS / ATLANTIC FOOD PRODUCTS CORP. (6 STORES TO SUPPLY YOU)
138. INSIST ON BLUE RIBBON MALT / BEAVER FALLS PRODUCE CO. BEAVER FALLS, PA.  
**B-14**
196. JIM MOTTE PEARL BEER KERRVILLE, TEX.  
**B-17**
15. KEY TO HOME BREWING CO'S BOTTLE BEER  
**B-18**
694. CAPITOL BREWERY CO. JEFFERSON CITY, MO.
695. KEY TO ENGESSER'S EXPORT, KING OF TABLE BEERS
696. KEY TO INDEPENDENT MALTING CO'S EXPORT BEER DAVENPORT IA
697. KEY TO KAZMAIER BEER / ALTOONA, PA.
698. LEMP ST. LOUIS (IN SHIELD) / J.S. WAHL CARUTHERSVILLE, MO.
699. DRINK TRIUNE ALE AND SALZBURGER BEER, MC CORMICK BREWERY CO. BOSTON.
700. DRINK ROYAL PALE RADEKE'S BEST
701. KEY TO ROCHESTER BREWERY KANSAS CITY, U. S. A.
702. SCHLITZ WALTER P. SIELLMACH SHAMOKIN, PA. / SAME
703. WALLA WALLA MALT SHOP / SAME
704. YOUGH BREWING CO. CONNELLSVILLE, PA.  
**B-19 CORRECTIONS**
170. MINNEAPOLIS BREWING CO. GOLDEN GRAIN BELT BEERS (2 VAR (A) GOLDEN TO LEFT OF GAS KEY (B) GOLDEN TO RIGHT OF GAS KEY) (07,852)  
**B-21**
617. COLD SPRING BREWING & MINERAL WATER CO.
618. GIRARD BARLEY MALT SYRUP MALT EXTRACTS & SUPPLIES / GIRARD MALT EXTRACT CO. 125 W. GIRARD AVE. PHILA. PA. PHONE GARFIELD 2061
619. JOHN KUHLMANN BREWING CO. ELLENVILLE, N. Y.
620. VOIGT BRY. CO. DETROIT KEY TO VOIGT'S RHEINGOLD OR "NURISHIN" MALT
621. ASK FOR WESTMORELAND BRG. CO. GOLD TOP
622. KEY TO YOUGH BEER CONNELLSVILLE, PA.  
**B-22**
143. HOME BREWING COMPANY INDIANAPOLIS, IND.  
**B-23**
195. KRANTZ OLD DUTCH THE GOOD BEVERAGE  
**B-33**
3. PRIMA BEER  
**B-38**
17. BLACKHAWK MALT SYRUP / BLACKHAWK EXTRACT CO. DAVENPORT, IA.  
**B-55**
33. HAMM'S SINCE 1865 (LION LOGO)
34. SCHLITZ (IN LOGO)  
**B-58**
34. BUD LIGHT BUD LIGHT (SPUDS MACKENZIE WITH PARTY HAT & BEER MUG) (RED & YELLOW ON BLUE)
35. GENESEE BEER  
**B-58 CORRECTIONS**
28. BUD LIGHT (NO PIC)  
**B-62**
10. SCHLITZ (IN LOGO) (ON LEATHER FOB)  
**B-73**
25. COORS THIRST/FOR/EXCELLENCE (PIC OF BOTTLE)
26. HARPOONBREWERY.COM H (BOTTLE CAP LOGO) (PIC OF GLOBE)
27. HARPOONBREWERY.COM U F O (PIC OF GLOBE)
28. HEILEMAN'S PURE GENUINE OLD STYLE (IN LOGO)
29. NORTH COAST BREWING CO. TM (PIC OF WHALE TAIL & TWO BIRDS)
30. OLYMPIA "IT'S THE WATER" (LOGO)
31. PABST BLUE RIBBON BEER (IN BLUE RIBBON LOGO) ESTABLISHED IN MILWAUKEE 1894
32. JOS SCHLITZ BREWING CO. OLD MILWAUKEE BEER (IN LOGO)
33. STROH'S BEER (LOGO)  
**B-79**  
**CAP LIFTER/SPINNING LOGO CENTER MADE IN CHINA 2 1/4"**  
**MIKE KREJCI/ART SANTEN/JOHN STANLEY**
1. ALASKA BREWING CO. (PIC OF FISH) / ALASKA BREWING CO (PIC OF SHIP)
2. BUD LIGHT GREAT TASTE GREAT TIMES / BL BUD LIGHT GREAT TASTE GREAT TIMES
3. BUDWEISER (CROWN LOGO) / KING OF BEERS  
**B-80**  
**CAP LIFTER 2 5/8"**  
**JOHN FISHER**
1. LANCASTER BREWING COMPANY (IN LOGO) LANCASTERBREWING.COM  
**C-12**
183. CREAMO (SEE C-12-4 CREMO MISPELLED) BREWING CO., INC. NEW BRITAIN, CT. CREMO ALE AND LAGER  
**C-13**
333. BLUE ISLAND MALT CO. 13119 WESTERN AVENUE PHONE - BLUE ISLAND 97 BLUE ISLAND, ILL. / CALUMET MALT CO. 142-154TH ST. CALUMET CITY, ILL. PHONE-HAMMOND 10504  
**C-45**
41. ASPEN EDGE TM (PIC OF MOUNTAINS) (A LOGO) LOW-CARB LIGHT BEER (BLACK, BLUE, GOLD, GRAY & RED ON WHITE)
42. HOSTER GOLD TOP BEER THAT'S THE BEER!  
WWW.HOSTERBEER.COM 614.221.3606 (WHITE ON

BLACK)

**C-49**

- 54. BLUE MOON BREWING CO. (BLUE MOON LOGO)
- 55. BUDWEISER (IN BOWTIE) (CROWN) KING OF BEERS (WHITE ON RED VINYL)
- 56. BUDWEISER OFFICIAL BEER 2006 FIFA WORLD CUP GERMANY FIFA TM FIFA WORLD CUP (IN LOGO)
- 57. BUDWEISER (SCRIPT) SELECT (CROWN LOGO)
- 58. COORS LIGHT OFFICIAL BEER SPONSOR (PIC OF FOOTBALL) NFL (IN LOGO)
- 59. COORS LIGHT (IN BOTTLE CAP) TEXAS ICE HOUSE (IN STAR) (BLACK ON STEEL)
- 60. HAUENSTEIN (WHITE ON BLACK VINYL)
- 61. MAN LAW: A MAN SHALL ALWAYS HAVE A BOTTLE OPENER CLOSE AT HAND GOOD CALL (PIC OF BOTTLE NECK WITH MILLER LITE LABEL)
- 62. MILLER GOOD CALL (SNOWFLAKE LOGO) (SILVER ON STEEL)
- 63. MILLER LITE (IN LOGO) (BLUE, RED & YELLOW ON WHITE VINYL)
- 64. PETE'S WICKED BREW (PIC OF BARLEY SHEAF) / SAME (RED & YELLOW ON BLACK VINYL)

**C-62**

- 3. MICHELOB LAGER (RIBBON LOGO)
- 4. MICHELOB LIGHT (RIBBON LOGO)

**C-67**

**CAP LIFTER/GUITAR (SEE C-42)**

**5 1/2"**

**HAROLD QUEEN**

- 1. MILLER LITE GREAT TASTE GREAT MUSIC (TRUE PILSENER BEER IN LOGO)

**C-68**

**CAP LIFTER**

**CREDIT CAR SIZE OPENER**

**(SEE C-45, C-69)**

**3 3/16" TALL & 2 1/2" WIDE**

**ART SANTEN**

- 1. BUDWEISER (IN BOWTIE) (CROWN) KING OF BEERS (WHITE ON RED)

**C-69**

**CAP LIFTER (RECTANGULAR OPENER)**

**CREDIT CAR SIZE OPENER**

**(SEE C-45, C-68)**

**3 3/8" TALL & 2 1/8" WIDE**

**MARK BENJAMIN**

- 1. COORS / THANKSGIVING CLASSICS 2004 NFL (IN LOGO)

**C-70**

**CAP LIFTER**

**2"**

**MIKE KREJCI**

- 1. BUD KING RACING (B CROWN LOGO)

**C-71**

**CAP LIFTER**

**3 3/8"**

**MIKE KREJCI**

- 1. MILLER GENUINE DRAFT

**C-72**

**CAP LIFTER**

**"DOG TAGS"**

**2 1/2"**

**JOHN STANLEY**

- 1. MILLER LITE (IN LOGO)

**C-73**

**CAP LIFTER (SEE C-49 & C-62)**

**4 3/4"**

**OLLIE HIBBELER/ART JOHNSON/ART SANTEN**

- 1. BUD (C LOGO) LIGHT / SAME
- 2. BUDWEISER (IN BOWTIE) (CROWN) / SAME
- 3. (CROWN) BUDWEISER SELECT / SAME

**D-3**

- 24. TERRA (TERRE MISPELLED) HAUTE / VELVET

**D-25**

- 2. SCHMULBACH BREWING CO. WHEELING, W. VA.

**E-4**

- 379. BERG AND SONS MALT SYRUP
- 380. THE CLEVELAND-SANDUSKY CO. CLEVELAND, OHIO / GOLD BOND BREW
- 381. COMMERCIAL BREWING CO. / OLD HOMESTEAD ALE
- 382. FALSTAFF / KEEP A CASE IN THE HOME
- 383. "FOUR HUNDRED CLUB" THE ARISTOCRAT OF BEVERAGES / - COMPLIMENTS - CLOVER FARMS STORES CO.
- 384. GOLD SEAL WITH EVERY MEAL / SAME
- 385. COMPLIMENTS OF KASKO PRODUCTS CO. / USE KASKO PRODUCTS (SEE A-3-18)
- 386. SCHNEIDER'S GRAND PRIZE GINGER ALE / 171-183 STOCKHOLM ST. (SCHNEIDER'S PROHIBITION SODA)

**E-5**

- 141. ACME BEER KEG AND BOTTLE BEER 1333 WEBSTER AVE. BRONX, N. Y.
- 142. BUDWEISER-FORT PITT-OLD SHAY ALE CANADA DRY GINGER ALE-SODA-POP 665 CASTLE DISTRIBUTING CO. 666 206 S. JEFFERSON ST.
- 143. CITY CLUB BEER (IN LOGO) "COMPLIMENTS FROM" HERRIG'S TAVERN MELVIN HERRIG, PROP. BELLEVUE, IOWA
- 144. HORLACHERS-BALLANTINE'S IF YOUR WIFE DRIVES YOU TO DRINK DRIVE TO OR PHONE J. S. STOVER DIAL 576-TELFORD, PA.
- 145. PABST ON TAP COMPLIMENTS OF SHOGO CAFÉ & TAVERN DINE AND DANCE - STEAKS - CHOPS AND FRIED CHICKEN - ON HIGHWAY 6 PH. 13 MILFORD, NEBR.

**E-6**

- 231. PILSNER BEER EXTRA PALE/ SAME

**E-7 CORRECTIONS**

- 10. PRIMA COMPANY BEVERAGES CHICAGO, PHONE LINCOLN 4302 (2 VAR (A) COMMA (B) PERIOD) (07,450)

**E-8**

- 130. PH. KLING BREWING CO. DETROIT MICH. / SAME
- 131. CALL FOR SCHELL'S BEER / SAME

**E-9**

- 148. W. VA. BEVERAGE CO. CHARLESTON, W. VA. / HIGH GRADE BEERS BREWERY BOTTLING

**E-14**

- 868. DREWRY'S DREWRY'S

**F-5**

- 53. E. BRUNETTI MALT STORE 59 FRONT ST. / B ARELS OTTLES C ORKS ROCKS M ALTS ACARONI
- 54. STONE MALT CO., 822 BROADWAY - PHONE: 6893 / OUR VERY BEST HOMERULE - SANDOW "39" MALT RED SUN - SAMBO

**F-7**

- 15. COMPLIMENTS OF MAYNARD L. KAUFMANN GLUEKS - JORDAN - PIONEER PABST BLUE RIBBON HUTCHINSON, MINN.

**F-18**

- 15. SILVER CITY BEER & ICE CO. / COAL - PHONE 10 (SEE F-9-16 BUDWEISER)

**G-5**

- 55. DUERLERBREW

**G-5 CORRECTIONS**

- 27. DRINK SCHOONER BREW IN BOTTLES (07,339)

**G-9**

- 103. STONEY'S AMERICA'S BEST BEER (WHITE ON RED)

**G-28**

- 73. WACHUSETT ALES / USE (BLACK ON SILVER)

**G-36**

- 6. PYRAMID HEFEWEIZEN ALE (PIC OF 2 PYRAMIDS) (ON BODY LABEL) HEFEWEIZEN WWW.PYRAMIDBREW.COM (PIC OF 2 PYRAMIDS) (ON NECK LABEL)

**G-46**

- 4. WEYERMANN SPECIALTY MALTS WWW.WEYERMANN.DE (WHITE ON RED)



- G-47**  
 26. COORS (BLACK & YELLOW ON WHITE)  
 27. COORS LITE (BLACK, RED & WHITE ON GREY)  
 28. LEINENKUGELS LEINIE LODGE CHIPPEWA FALLS, WISCONSIN TOLL FREE: 1-888-LEINIES (PIC OF CANOE) (BLACK, GOLD, GREEN & RED ON WHITE)

- G-48**  
 51. MILLER (ON LOGO) HIGH LIFE (RED & WHITE ON GREEN)  
 52. RED HOOK (IN LOGO) WINTERHOOK (WHITE ON DARK BLUE)  
 53. WEEPING RADISH RESTAURANT & BREWERY (GOLD ON BLUE)

- G-68**  
 5. SEA DOG BREWING CO. (BLUE ON YELLOW)

- G-82**  
 2. BUD MAN

**G-87**  
**CAP LIFTER/BOTTLE SHAPE**  
**5"**

- JACK FORD**  
 1. PABST BLUE RIBBON BEER (ON BODY LABEL) PABST BREWING CO. SINCE 1844 (B LOGO) (ON NECK LABEL)

**G-88**  
**CAP LIFTER/BOTTLE SHAPE**  
**MAGNET ON BACK**  
**5 3/4"**

- MIKE KREJCI**  
 1. ALASKAN AMBER ALT STYLE BEER (PIC OF BOAT)

**G-89**  
**CAP LIFTER/BOTTLE SHAPE**  
**3 1/4"**

- BEN HOFFMAN**  
 1. LATROBE BREWING CO. LATROBE, PA. ROLLING ROCK PREMIUM BEER EXTRA PALE @1939 (ON BODY LABEL) ROLLING ROCK (ON NECK LABEL)

**G-90**  
**CAP LIFTER/CURVED**  
**2 1/2" OR 3 1/4"**

- ART SANTEN**  
 1. BLACKSTONE (WHITE ON BLACK) (NASHVILLE TN MICRO)  
 2. LEMP BEER EST. 1840 (WHITE ON BLACK)

**G-91**  
**CAP LIFTER**  
**2 5/8"**

- OLLIE HIBBELER/ART SANTEN**  
 1. GRAIN BELT (IN LOGO)

**G-92**  
**CAP LIFTER**  
**5 1/4"**

- MIKE KREJCI/HAROLD QUEEN**  
 1. COORS FINE LIGHT BEER / COLD.DOWN.EASY

**G-93**  
**CAP LIFTER**  
**5"**

- MIKE KREJCI**  
 1. MILLER GENUINE DRAFT COLD-FILTERED

**G-94**  
**CAP LIFTER**  
**(CURVED HANDLE)**  
**4 3/8"**

- MIKE KREJCI**  
 1. COORS FINE LIGHT BEER (MOUNTAIN LOGO)

- H-2**  
 219. KING'S BEER R. A. ENGELKING, DISTR. SEALY, TEXAS  
 220. SABINAS BEER TEXAS PRODUCT

- I-11 CORRECTIONS**  
 200. LONE STAR BEER IT'S CERTIFIED / SAME (2 VAR (A) LEFT-HANDED (B) RIGHT-HANDED) (07,605)

**I-12**

209. CLEVELAND-SANDUSKY BREWING CORP. CLEVELAND, OHIO / OLD TIMERS ALE  
 210. DRINK ESSLINGER'S BEER-ALE (WAS I-13-96)  
 211. NATIONAL BREWING CO. BALTIMORE, MD. / DRINK NATIONAL BEER (WAS I-13-69)

**I-13**

128. COORS  
 8. LITE BEER (BLUE ON WHITE)

**I-30**

**L-14**

19. BACARDI SILVER WATERMELON (BIRD LOGO ON BOTTLE LABEL) BACARDI SILVER WATERMELON (ON NECK LABEL)  
 20. BUDWEISER (SCRIPT) SELECT (PIC OF CROWN) (ON BOTTLE LABEL) BUDWEISER (SCRIPT) SELECT (PIC OF CROWN) (ON NECK LABEL)  
 21. COORS LIGHT THE SILVER BULLET (A TASTE BORN HIGH IN THE ROCKY MOUNTAINS (IN WATERFALL LOGO)) (ON BOTTLE LABEL) COORS LIGHT (ON NECK LABEL)  
 9. MICHELOB LIGHT BEER (ON BOTTLE LABEL & NECK LABEL) (2 VAR (A) MICHELOB BLOCK LETTERS (B) MICHELOB SCRIPT LETTERS)  
 22. THIN ICE WWW.DRINKTHINICE.COM (ON BOTTLE LABEL) THIN ICE (ON NECK LABEL)  
 23. VIRGIN ISLANDS BREWING CO. BLACKBEARD ALE (PIC OF SHIP & ISLANDS ON BOTTLE LABEL) VIRGIN ISLANDS BREWING CO. BLACKBEARD ALE (ON NECK LABEL)

**M-3 CORRECTIONS**

45. **THE STANDARD BREWING CO. / STANDARD SCRANTON BEER / SCRANTON, PA / THE BEST BEER IS BREWED IN SCRANTON (DARK RED) (07,213)**

**M-29**

108. FRIENDLY BEVERAGE CO. DISTRIBUTORS OF GRAIN BELT PREMIUM STORZ BEER ROCK SPRING BEVERAGES

**M-30**

165. BUD ON TAP-PACKAGE GOODS "WHERE OLD FRIENDS MEET" MIXED DRINKS REX'S KORNER TAVERN 5838 SOUTHWEST AVE.  
 166. BUDWEISER, ??? TOM & ??? BURN'S BUFFET 5709 TELEGRAPH RD. OAKVILLE, MO. TI 6-8704 CARRY-OUT  
 167. COLD SPRING BREWING CO. COLD SPRING, MINN. KEGLE BRAU BEER  
 168. SCHLITZ ON TAP COMPLIMENTS OF JIM AND YOL'S TAVERN ON RT. 45 IN LODA, ILL. BEER-WINES-LIQUORS SANDWICHES & PACKAGE GOODS PH. A/C 217-386-9225

**M-38**

12. HAMMS BEER (IN BOX LOGO) JOHN T. KARAKAS EVELETH, MINN.

**M-54**

20. MILLSTREAM BREWING CO AMANA COLONIES (RED ON WHITE)

**M-83**

37. HAMMS BEER JOHN KARAKAS DISTB. CO. EVELETH, MINN.

**M-90**

11. UTICA CLUB UTICA, NY (PIC OF TWO MUGS) / UTICA CLUB

**M-149**

2. MILLER MGD TM GENUINE DRAFT / SAME  
 3. SPRECHER BREWERY ESTABLISHED IN MILWAUKEE 1985 (PIC OF GRIFFEN) / SAME

**M-155**

**TWO FRET CAP LIFTER/FOUR-SIDED WOOD HANDLE**  
**5 1/4"**

**JOHN CARTWRIGHT**

1. DIEZ MALT STORE / "AGENT RAINIER PRODUCTS LEADER MALT" / PHONES { BAL. 636 COL. 119 / 1044 C THE ALAMEDA

**M-156**

**CAP LIFTER/WOODEN SLEEVE**  
(SEE P-7)  
4 3/4"

- PAT STAMBAUGH**  
1. ALEXANDRIA BREWING CO. ALEXANDRIA, MINN.  
WUERZBURGER

**M-157**

**CAP LIFTER/FOUR OPENERS (TWO OPENERS EACH SIDE)**  
2 9/16"

- ART SANTEN**  
1. MICHELOB ULTRA AMBER (RIBBON) / SAME

**M-158**

**CAP LIFTER/CAN PIERCER**  
7 1/4"

- JOHN STANLEY**  
1. FRIENDLY GREETINGS GRAIN BELT-ROCK SPRING  
"BUD" ANDREWS

**M-159**

**CAP LIFTER/BOTTLE SHAPE**  
HEAVY PEWTER HANDLE

4 13/16"

- JOHN STANLEY**  
1. COORS LIGHT COORS LIGHT / SAME

**M-160**

**CAP LIFTER**  
3 1/2"

**MIKE KREJCI**

1. MILLER HIGH LIFE (GIRL ON THE MOON) (MAGNET  
ON BACK)

**N-9**

48. MATHIE-RUDER BREW. CO. WAUSAU, WIS. RED RIB-  
BON & GOLD STAR BEER  
49. STONEY'S "AMERICA'S BEST BEER" SMITHTON, PA.

**N-23**

10. THE HUDEPOHL BREWING CO. CINCINNATI, OHIO  
HUDEPOHL BEER

**N-27**

23. PEARL BEER DISTRIBUTOR LYNN F. BOEHME KE 8-  
2532 CASTROVILLE, TEXAS

**N-35**

18. PRIOR BEER / ATLANTIS IMP. & DISTR. INC. NEW  
YORK CH 4-5841

**N-36**

10. TO A GOOD SPORTSMAN HAMM'S BEER JACKSON  
WHOLESALE COMPANY

**N-42**

8. BUDWEISER KING OF BEERS (EAGLE IN A) / L.  
BEAL, INC

**N-62**

3. ROGER WILLIAMS BREWING CORPORATION PROVI-  
DENCE, R. I. WESTMINSTER HALF STOCK ALE INDIA  
PALE ALE

**N-137**

**CAP LIFTER & MOUNTAIN CLIMBING RING**  
WITH SPRING LOADED CLIP

(SEE N-99, N-133, N-138, N-139)

2 5/8"

**ART SANTEN/JOHN STANLEY**

1. BUD LIGHT  
2. BUDWEISER (IN BOWTIE) (CROWN) KING OF BEERS

**N-138**

**CAP LIFTER & MOUNTAIN CLIMBING RING**  
WITH SPRING LOADED CLIP/PUSH BUTTON MAG LIGHT

MARKED "NOT FOR CLIMBING"

(SEE N-99, N-133, N-137, N-139)

2 5/8"

**MIKE KREJCI**

1. COORS LIGHT LIVE!

**N-139**

**CAP LIFTER & MOUNTAIN CLIMBING RING**  
WITH SPRING LOADED CLIP

MARKED "NOT FOR CLIMBING-CHINA"

(SEE N-99, N-133, N-137, N-138)

3 1/8"

**MIKE KREJCI/ART SANTEN**

1. MILLER BREWING CO. (WHITE ON BLUE) (WHITE ON  
RED)

**N-140**

**CAP LIFTER/ICE CREAM SCOOP**

8 1/8"

**PAT STAMBAUGH**

1. TO A "PREMIUM" FRIEND ERICKSON GRAIN BELT CO.  
SISSETON, S. D. MARIE-HOWARD-LAVERNE-DAVE

**N-141**

**CAP LIFTER/COMPASS**

2"

**ART JOHNSON/ART SANTEN**

1. BUSCH

**N-142**

**CAP LIFTER**

MARKED "QUICK'UP (L) / PATENT"

2 1/4"

**MIKE KREJCI**

1. COORS LIGHT

**N-143**

**MALT CAN OPENER**

(SEE N-21)

MARKED "VAUGHAN CHICAGO"

7 3/4"

**ART SANTEN**

1. MILLER HIGH LIFE BEER

**N-144**

**2-PIECE BBQ SET**

**CAP LIFTER/SPATULA**

2) **CAN PIERCER/FORK**

MARKED "ZIPPO"

15"

**ART SANTEN**

1. BUDWEISER (B CROWN LOGO) KING OF BEERS

**N-145**

**BELT BUCKLE/CAP LIFTER**

5"

**ART JOHNSON/MIKE KREJCI**

1. BUDWEISER (B CROWN LOGO) TRUE MUSIC

**N-146**

**BELT BUCKLE/CAP LIFTER**

(BUCKLE IS FLAT "C" STYLE OPENER)

3 5/8" (36" WITH CLOTH BELT)

**MIKE KREJCI**

1. MILLER GOOD TIME

**O-1**

6. WALTER'S TRIPLE BREWED BEER & ALE

**O-4**

48. BUDWEISER KING OF BEERS

49. F & S BEER SHAMOKIN, PA.

**O-5**

56. SCHLAFLY BEER (BLACK ON SILVER)

**O-8**

24. DRINK ATLAS SPECIAL BREW

**O-24**

**CAST IRON**

**WALL MOUNT OPENER**

2 13/16"

**HAROLD QUEEN**

1. OLD=STOCK

**P-6**

13. ASHLAND BREWING CO. BREWERS ASHLAND, WIS.  
WHITE RIBBON BEER PHONE 800

**P-7**

62. ALEXANDRIA BREWING CO. WUERZBURGER ALEXAN-  
DRIA, MINN.

63. N. H. GILBERT, AGENT FOR JONES' PORTSMOUTH &  
HOMESTEAD ALES AND PORTER ALSO BUDWEISER &  
ANHEUSER BUSCH BEERS, GINGER ALE AND OTHER  
CARBONATED BEVERAGES.

64. OLD FASHIONED LAGER BEER A SPECIALTY. OTTO

WEBER'S OLD TURNER HALL BUFFET AND FRIENDLY BEER GARDEN. ALL KINDS OF GERMAN LUNCHESES. COOLEST PLACE IN TOWN.

**P-8**

235. JOHN HAUENSTEIN BREWING CO. NEW ULM, MINN. / SAME

236. KESSLER BREWING CO. HELENA, MONT. / SAME

237. "NARRAGANSETT BREWING CO." PROVIDENCE, R.I. NEW ENGLAND'S LARGEST LAGER BREWERY. / THE FAMOUS NARRAGANSETT LAGER, ALE & PORTER.

238. ST. PAUL BREWING CO. ST. PAUL, MINN. / SAME

**P-15**

21. BREEN BEVERAGE WHOLESALER OF SCHLITZ BEER

**P-19**

132. ALLEY'S BOTTLE ALE SOLD HERE COMPLIMENTS OF T. H. ROACH & CO., 122 BLOSSOM ST., LYNN, - MASS.

133. DEER PARK BREW. CO. BEER, ALE & PORTER PORT JARVIS, N.Y.

134. SCHLITZ MILWAUKEE LAGER MICHAEL T. DOHERTY & CO. WHOLESALE LIQUOR DEALERS AND GROCERS,

135. TONY KAYSER, BOTTLER TANNHAEUSER AND REAL GERMAN LAGER BEER WINES AND WHISKIES. TEMPLE CLUB WHISKEY \$1.00 PER QT. 238-40 SOUTH 11TH ST.

**P-24**

16. THE L. HOSTER BREWING CO. COLUMBUS, O. / HOS- TER BOTTLING CO. LOCK HAVEN, PA.

**P-26**

10. ANHEUSER-BUSCH / (EAGLE IN A) (BONE HANDLES)

**P-46**

5. L. BEAL, INC. GRAIN BELT & BUDWEISER BEER

**P-51**

74. BIRK BROS. BREWING CO. CHICAGO. / "MALT VIGOR" A HEALTH TONIC.

75. BUDWEISER STEPHENS-KENNEDY CO., SIOUX CITY IOWA / SAME

**P-54**

50. DRINK SUNSHINE BEER IT'S THE BEST WILHELM, SCHLIMINGER & RAMSEY ALTOONA, PA.

**P-57**

34. THE C. BIRKHOFFER BWG. CO., MINNEAPOLIS, MINN. / SAME

35. PITTSBURG PURE BEER BRG. CO. / SAME

**P-60**

7. AGENTS FOR EVANS HUDSON ALE W. SCOTT GILLES- PIE GROCERIES WINES & LIQUORS, KINGSTON, N. Y.

**P-66**

13. (PIC OF BOTTLE CAP LOGO WITH M GRAIN BELT BEER) THE FRIENDLY BEER MINNEAPOLIS BREWING

**P-73**

7. TOLEDO BREWING & MALTING CO.

**P-88**

7. PABST BREW CO. WASHINGTON DC

**P-90**

7. WM. FREAS AGENT, ANHUESER-BUSCH BEER FRANK- FORT, IND. / SAME

**P-184**

**TWO BLADE KNIFE/CORKSCREW/**

**MASTER BLADE/PEN BLADE**

**STANHOPE OF "AUGUST BUSCH"**

**CELLULOID HANDLES**

**MASTER MARKED "ANHEUSER-BUSCH GERMANY K"**

**PEN MARKED "ANHEUSER-BUSCH MADE IN GERMANY K"**

**DON BULL/JOHN STANLEY**

1. ANHEUSER BUSCH / (EAGLE IN A)

**P-185**

**WAITER'S FRIEND/THE "DAVIS" KNIFE & CORKSCREW/ NECKSTAND**

**WEB HELIX (SEE P-2, P-70, P-99)**

**DESIGNED BY DAVID W. DAVIS**

**MECHANICAL PATENT NO. 455,826**

**(07/07/1891) & (07/14/1891)**

**CHRIS QUIMBY/JOHN STANLEY**

1. COMPLIMENTS OF PABST BREWING CO. MILWAUKEE.

**Q-8**

47. BUD LIGHT (PIC OF SPUDS MACKENZIE) (PAW PRINT)

**Q-10**

44. MILLER HIGH LIFE (IN LOGO) WELCOME TO MILLER

TIME PAT SHEEDY DIST. CO. OTTUMWA, IOWA

45. WELCOME TO MILLER TIME PAT SHEEDY DIST. CO.

**Q-12**

80. COORS (PIC OF HAND HOLDING MUG) DRINK SAFELY (WHITE ON BLUE)

81. MICHELOB LIGHT BEER LIGHT UP THE NIGHT!

82. MILLER LITE (IN LOGO) OHIO FOOTBALL (PIC OF HELMET)

**Q-18**

229. BURGUNDY BREWERY & RESTAURANT (BLACK ON RED)

230. FOX RIVER BREWING CO. (WHITE ON GREEN)

231. "GOOD PEOPLE DRINK GOOD BEER." (FLYING DOG BREWING) (WHITE ON BLACK)

232. KALAMAZOO BREWING CO., INC. MAKERS OF BEER, ALE, PORTER & STOUT. BELL'S (PIC OF 3 BELLS IN LOGO) (BLACK ON YELLOW)

233. KUL LITE (CITY BREWERY, WIS) (SILVER ON BLUE)

234. LACROSSE LAGER CITY BREWERY, WIS) (WHITE ON RED)

235. LEINENKUGEL'S BEER (WHITE ON RED)

236. LEINENKUGEL'S BERRY WEISS (WHITE ON PURPLE)

237. LEINENKUGEL'S HONEY WEISS (BLACK ON YELLOW)

238. PITTSBURGH BREWING.COM IRON CITY BEER FRESH BEER SINCE 1861 (PIC OF STAR) (RED & WHITE ON BLACK)

239. PUG RYAN'S BREWERY DILLON, COLORADO ELEV. 9156 (BLACK ON BLUE) (BLACK ON RED) (BLACK ON YELLOW)

240. STAG (RED ON WHITE)

241. VINE PARK BREWING CO. 651.228.1355 (RED ON WHITE)

**Q-24**

10. COPPER ALE GOLD MEDALIST GABF 2003 GERMAN STYLE ALT BIER CATEGORY (GOLD ON GREEN)

**Q-31**

135. KEYSTONE LIGHT BEER (PIC OF MOUNTAINS) DRIVE SOBER (BLUE ON WHITE)

**Q-31 CORRECTIONS**

121. BURGUNDY'S 715-834-3181 EAU CLAIRE, WI (WHITE ON BURGUNDY) **(DELETE HOTEL RESTAURANT NOT A BREWERY)**

**Q-32**

113. MILLER BREWING CO REMINDS YOU TO PLEASE THINK WHEN YOU DRINK / MILLER MGD. (PIC OF BASKET-BALL) (BLACK ON ORANGE)

114. MILLER BREWING CO REMINDS YOU TO PLEASE THINK WHEN YOU DRINK / MILLER GENUINE DRAFT (PIC OF VOLLEYBALL & NET) (BLACK ON WHITE)

115. MILLER GENUINE DRAFT LIGHT (PIC OF BASKET-BALL) (BLACK ON ORANGE)

116. PREMIUM BEER (ROLLING ROCK HORSE & FOUR STAR LOGO)

117. ROLLING ROCK (PIC OF HORSE IN LOGO) ROCK LIGHT (BLUE ON WHITE)

118. YBOR CITY BREWING COMPANY YCBC (GOLD ON BLACK)

**Q-36**

90. COORS LIGHT COORS LIGHT IN 3 LEAF CLOVER (TWICE) (GREEN ON WHITE)

91. EX ICE BREWED FOR ATTITUDE (BLACK ON WHITE)

92. MILLER BREWING CO REMINDS YOU TO PLEASE THINK WHEN YOU DRINK / MILLER HIGH LIFE (GREEN & RED ON WHITE)

93. MILLER GENUINE DRAFT RACING TEAM MGD (2 RAC- ING FLAGS) (WHITE ON BLACK)

94. MILLER TIME (RACING FLAG WITH LITE ON IT)  
(WHITE ON BLUE)
95. ROLLING ROCK (WHITE ON GREEN)  
**Q-62**
5. BUDWEISER / BUD LIGHT (BLACK ON ORANGE) (SEE THROUGH HANDLE) (EMITS SHREIK SOUND)
6. COORS LIGHT (BLACK ON CHROME)  
**Q-84**
8. COORS / DRIVE SOBER (BLUE & YELLOW ON WHITE)
9. LEINENKUGEL'S HONEY WEISS 1-888-LEINIES  
(BLACK ON YELLOW)
10. SPRECHER BREWERY MILWAUKEE, WI. ESTABLISHED 1985 ALES & LAGERS GOURMET SODAS SPRECHER-BREWERY.COM (PIC OF DRAGON) (WHITE ON BROWN)  
**Q-85**
2. COORS LIGHT DISIGNATE!  
**Q-96**  
**CAP LIFTER/FOOTBALL SHAPE**  
**4 5/8"**  
**MIKE KREJCI**
1. COORS LIGHT @2000 COORS BREWING COMPANY, GOLDEN, COLORADO 80401-BEER-MEG0350 DRIVE SAFELY / COORS LIGHT  
**Q-97**  
**CAP LIFTER/BASKETBALL SHAPE**  
**TWO MAGNETS**  
**3 1/8"**  
**ART JOHNSON/ART SANTEN**
1. SAM ADAMS TAKE PRIDE IN YOUR BEER TM  
**R-19**
6. LEINENKUGEL'S HONEY WEISS 1-888-LEINIE'S  
(BLACK ON YELLOW)
7. LEINENKUGEL'S JACOB LEINENKUGEL BREWING COMPANY CHIPPEWA FALLS, WISCONSIN WWW.LEINIE.COM (WHITE ON RED)  
**R-26**
6. MILLER LITE (IN LOGO) MINNESOTA VIKINGS (VIKINGS LOGO) (WHITE ON BROWN)  
**R-34**
2. MILLER GENUINE DRAFT (IN LOGO) BLACK ON BROWN  
**R-36**
7. BUD RACING / 8 DALE JR. ALL STAR GAME 2001 SEATTLE (HOLOGRAM OF BATTER)  
**R-36 CORRECTIONS**
3. MILLER LITE (WHITE ON BROWN) (2 VAR (A) HORIZONTAL LABEL (B) VERTICAL LABEL) (07,158)  
**R-51**
7. MILLER LITE (IN LOGO) LIVE RESPONSIBLY MILLER (IN LOGO) C 2005 MILLER BREWING CO. FT. WORTH, TX / DALLAS COWBOYS LOGO (BLUE & WHITE ON SILVER)
8. MILLER LITE (IN LOGO) LIVE RESPONSIBLY MILLER (IN LOGO) C 2006 MILLER BREWING CO. MILWAUKEE, WI / ATLANTA FALCONS LOGO (RED, BLACK, SILVER & WHITE ON BLACK)
9. MILLER LITE (IN LOGO) LIVE RESPONSIBLY MILLER (IN LOGO) C 2006 MILLER BREWING CO. MILWAUKEE, WI. / BALTIMORE RAVENS LOGO (WHITE, GOLD & BLUE ON BLACK)
10. MILLER LITE (IN LOGO) LIVE RESPONSIBLY MILLER (IN LOGO) C 2006 MILLER BREWING CO. MILWAUKEE, WI. / MILLER LITE (IN LOGO) (WHITE ON BLUE)  
**R-59**  
**CAP LIFTER/MOTORCYCLE**  
**(SEE R-49)**  
**2 5/8"**  
**ART JOHNSON/ART SANTEN**
1. BUDWEISER (SCRIPT)  
**R-60**  
**CAP LIFTER/INDIAN FIGURE PLAYING FLUTE**  
**MARKED "D453-454 CHINA"**  
**2 7/8"**

- ART JOHNSON**
1. ROCK ART BREWERY (VERMONT MICRO)  
**R-61**  
**SOCCER PLAYER WITH BALL**  
**2 1/16"**  
**MIKE KREJCI**
1. (CROWN) BUDWEISER OFFICIAL PARTNER OF THE 2006 FIFA WORLD CUP / (FIFA LOGO) FIFA TM  
**R-62**  
**TURTLE**  
**5 5/8"**  
**MARC BENJAMIN**
1. TERRAPIN BEER CO. ATHENS, GA  
WWW.TERRAPINBEER.COM US PATENT D0470370 / TERRAPIN (ON TAIL)  
**X-17**  
**2006 JFO CONVENTION OPENER**  
**GUITAR SHAPE AFTER A-66**  
**4 1/4"**  
**JOHN STANLEY**
1. JUST FOR OPENERS 28TH ANNUAL CONVENTION APRIL 19-23, 2006 NASHVILLE, TN DRINK GERST BEER (JUST FOR OPENERS J. F. O. IN ROUND FLAG LOGO)  
**Z-2**
3. COORS LIGHT TASTE THE COLD (MOUNTAIN LOGO) / SAME
4. MILLER LITE (IN LOGO) (ETCHED ON STAINLESS STEEL)
5. MILLER LITE TRUE PILSNER BEER (IN LOGO) (BLUE, RED, WHITE & YELLOW ON BLUE PLASTIC)

A SINCERE THANK YOU TO THE FOLLOWING DEVOTED COLLECTORS WHO TOOK THE TIME TO SEND THEIR NEW ADDITIONS (UL'S) TO ME TO MAKE THIS LIST POSSIBLE. IT IS GREATLY APPRECIATED BY ALL OF US.

**MEMBER NAME & NUMBER (# LISTED)**

- AAA-COLUMBINE CHAPTER ABA 0 (1)  
TOM BALANDA JR 1061 (2)  
MEAD BATES 416 (1)  
GARY BAUER 951 (1)  
DAVID BELKNAP 1059 (3)  
JOHN BITTERMAN 786 (1)  
DICK BRITTON 528 (2)  
DON BULL 1 (1)  
JOHN BURRUSS III 822 (14)  
JOHN CARTWRIGHT 587 (10)  
EBAY 0 (28)  
TOM GORMALLY 605 (4)  
OLLIE HIBBELER 149 (6)  
BEN HOFFMAN 261 (14)  
NORM JAY 181 (3)  
ART JOHNSON 213 (1)  
MIKE KREJCI 909 (39)  
DAVE LENDY 804 (1)  
SAM MARCUM 665 (1)  
LARRY MOTER 450 (4)  
BILL MUMA 279 (2)  
JIM OSBORN 126 (1)  
JOHN PATTON 776 (2)  
HAROLD QUEEN 572 (4)  
ART SANTEN 158 (52)  
BOB STAHL 176 (1)  
PAT STAMBAUGH 930 (8)  
JOHN STANLEY 339 (19)  
DARVIN STILWELL 980 (2)  
ROBERT SUDDUTH 991 (1)  
ERNIE THOMS 852 (4)  
SCOTT WILLIAMS 365 (3)  
JOE YOUNG 314 (1)



# The Jay-Cee Bar Mount Beer Can Opener, San Marcos Texas

By Charlie Staats (sent in by Jeb Burruss)

## UNITED STATES PATENT OFFICE

2,628,421

CAN OPENER

James H. Crews, San Marcos, Tex., assignor to  
The First National Bank of San Marcos

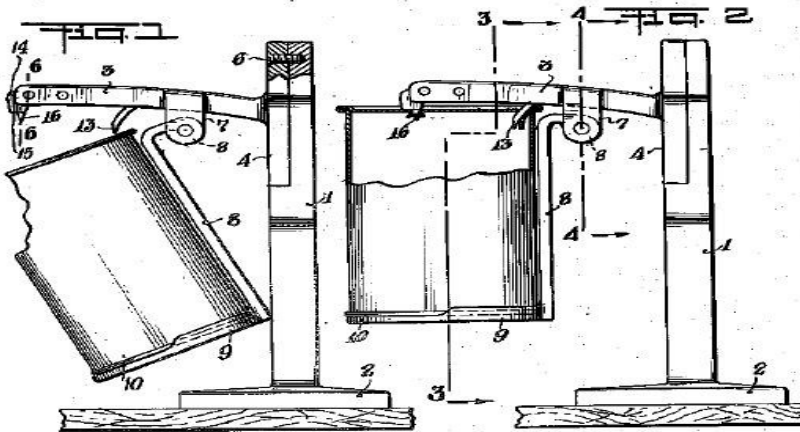
Application October 24, 1949, Serial No. 123,269

Feb. 17, 1953

J. H. CREWS  
CAN OPENER

2,628,421

Filed Oct. 24, 1949



Patent (# 2,628,421 issued to J. H. Crews on Feb, 17, 1953) drawing left, some of the patent text below and the shelf stamping above. The Jay-Cee is JFO style K-6.

A can opener comprising, a stand, a bracket extending forwardly from the stand and whose free end is provided with a slot, lugs spaced apart and depending from the bracket a hanger whose upper end is rearwardly turned at substantially right angles and pivoted between the lugs and depending therefrom, a platform secured to the lower end of the hanger and extending forwardly therefrom to receive a can, a shank secured in said slot formed with a shoulder and a depending punch beneath the shoulder and a blade whose shank is countersunk into the under side of the bracket between said lugs and whose forward end is downwardly curved and formed with cutting side edges and terminating in a point, said hanger being movable forwardly and positioned to carry the top of the can on the platform into contact with said blade and punch to perforate said top.

# The Jay-Cee Bar Mount Beer Can Opener, San Marcos Texas By Charlie Staats (sent in by Jeb Burruss) (Continued)

The only brands known to use the Jay-Cee are Southern Select, Pearl & Falstaff. Right and bottom Right.



The Original

### The 3 SWING ARM variations



Mk1  
Cast Arm

Mk2  
Bent / Steel

Mk3  
Stamped / Steel

The two pictures above of an original Jay-Cee with no ad.

Does anyone have a Jay-Cee bar mount that is not shown???



## “Opener and eBay Trivia”

From the last issue no one responded to Tom Gormally's question of how to differentiate the two varieties I-20-6 Hamms swivel opener. Also no one responded to John Cartwright's question about the P-6 Ashland Brewing listings. I made his listing a UL for this year.

Ebay was a little more active this quarter than the previous quarter as far as openers were concerned. “A” types had many good openers sold but the only noteworthy result was an A-21 Coca-Cola spinner from California. It brought \$131.39 and was purchased by John Cartwright. A good price and probably did not go higher because so many of the repro A-21 Coca-Cola openers are offered for sale on eBay (along with the A-9 baseball player and the A-12 sword).

A very nice selection of “B”'s sold this past quarter. Several to note including a B-1 “Yellowhead Beer” (Canadian) that brought \$153.55. It now resides in Bill Arber's “Brass” collection. An unusual CBO opener (style B-8) with an ad for Harley-Davidson Motorcycles brought in a lot of bidders before selling at \$79.55. Several nice soda “B”'s sold with the most interesting one being the B-14 Coca-Cola from Springfield OH. It brought \$73.51. Finally a very hard to find B-53-2 from Richter Brewing of Escanaba MI brought \$84.43 and was bought by Jeb Burruss.

Only a few “C” types with the most unusual again being a Canadian Beer opener, a C-12 Newfoundland Brewing, which brought \$55.00 (BIN “Buy-It-Now”). The D-1 A-B has really produced some good prices the last couple of years but all three versions are fairly common but it must be a must-have for A-B collectors. I was very happy to get the D-25-UL Schmulbach Brewing for \$34.75. This opener is just a “Loop Seal” remover. Only one other in this style has been reported with a U. S. beer ad (in fact these are the only two I have ever seen in this style).

Several good “wires” or “E” types sold and one of the better ones was an E-9 Golden West Brewery from Calgary bringing \$61.00 and it is now part of the Larry Moter collection. It saw several Canadian bidders chase after it. The most surprising “E” result was an E-14-602 Fergus Brewing bringing \$99.00. It is a tough Minnesota wire but one of those times a couple of bidders really wanted it. I guess I should be critical of myself because I paid \$78.77 for an E-25-13 Hauck (New Jersey). When you're down to needing 2 or 3 openers to complete a category the price is rarely cheap. This was definitely

heavy for this opener. Maybe \$30-50 would be more fair for this opener. The “F” types saw very limited action with nothing unusual being sold.

Cast iron figurals saw the emergence of reproduced Skulls (FBOC-423). The first couple brought good money (\$300 range) and then as more were sold the price dropped all the way down to the \$10 range. At one time a very desirable cast iron opener and still so. The new reproduction has a tan color but can easily be differentiated from the original as the eye socket holes are half dollar size while the original opener has small holes that used to mount the opener on the wall. As always people, it is “Buyer Beware!” See the accompanying picture of the new reproduction (I paid \$15 plus \$6 shipping to have one in my collection).

Someone got a nice buy in a G-1-6 Dr Miller for \$21.05. A rarely seen opener and one of the hard ones to get in this category. I filled a couple of holes in the collection with the purchases of a G-5-27 Schooner Brew for \$41.01 and a H-1-31 Haefner for \$36.00. Two openers that I had not seen offered for sale before. The key to the H-8 category, #19 Atlantic, was offered twice this quarter. It has surfaced several times the last few years but is definitely the most colorful H-8 made.

The usual assortment of “K-2”'s were offered and the leader this quarter was the K-2-4 Blatz at \$111.05. Not that hard to find but for some reason always brings good money on eBay. Another nice K-12-1 Lone Star sold for \$307.59. These always draw a lot of interest and like the Blatz always bring good results on eBay and especially if the condition is nice. “L” types saw the weekly offer of L-2 A-B bottle corkscrews. One of the surprising results was an L-1 (bottle shaped) with an ad for Canada Dry bringing \$128.05. It must be a tough Canada Dry opener to find. Another round of “foil” “L-4”'s with ads for Duquesne, Falstaff, Goebel, and Pabst were sold for the second time this year. Three are ULs (Falstaff known) but I have not listed at this point as I really believe these are fantasy openers (someone with labels made them up).

Sliders (“M-3”'s) continued their hot trend and were led by a M-3-23 F & S in nice condition bringing \$354.99. Condition plays a part as a M-3-33 Moose in good condition brought \$59.88 while one in excellent condition brought \$190.29. But then a rough M-3-35 Duquesne brings \$157.55. So go figure. M-19 fake Coca-Cola openers are still being sold and still bring too much

## “Opener and eBay Trivia” (Continued)

money but I have harped on that one enough in this column. “M-73”s (Corkscrew Sliders) have seemed to fall in the \$75-\$100 category for non-beer ones and \$150-\$250 for beer ones (if the condition is nice). “N” types saw several items sold but nothing very interesting except for a nice N-87 Kuntz Brewery (Canadian) knife for \$216.49 and an unusual N-87 Coca-Cola knife with Merry Christmas on one side for \$400.00. Nice knives as a rule do very well on eBay.

“O” (wall mounts) saw the normal activity with beer and soda advertising examples. Starr and Starr X have certainly seen prices settle down. The only high example was an O-5 (Starr X) Pep that brought \$145.05. The O-8-UL Flocks was high on my want list and even though I threw in a high bid, a local PA collector came out on top at \$216.49.

Good beer corkscrews (“P” types) were not as plentiful as past quarters but there were a few notables. Leading the way was a P-26-8 Anheuser-Busch (All Red Handles) in excellent condition bringing \$3,050.00. A-B knives are always being sold on eBay but when rare color variations or styles are sold they always do very well. A fair to good condition Hamms Barmount, P-64-1, was added to Pat Stambaugh’s collection at \$450.00. A couple of soda corkscrews did well also as the P-503 Clicquot Club brought \$306.12 and a P-506 (Ruby Patent) brought \$153.61.

General corkscrews saw many desirable U. S. and European pieces sold. Leading the way was the German Dreadnought patent bringing \$7,223.00 followed by a U. S. Blake patent of 1860 which sold for \$6,150.00. Don Bull did finish selling the Alf Erickson Collection and overall the results were very pleasing. eBay has pretty much replaced auctions held by the major firms such as Christie’s or Sotheby’s (or they rarely hold corkscrew auctions anymore). The corkscrew market remains very strong and is always attracting new collectors.

The number of good items on eBay as far as openers are concerned are certainly declining. Also more JFO members are bidding and the competition is very keen for many of the openers but many others go at bargain prices. The search is still lots of fun but eBay has seen a dramatic rise in foreign and new novelty openers offered for sale. With corkscrews doing well, lots of nice examples are still being offered for sale. The hunt continues and anyone wanting advice (on value or rarity) for an opener for



The ‘Repro’ Skull wall mount. Note the extra large holes in the eyes. The original had small holes to hold screws so the opener could be attached to the wall.



The neat little bottle opener and “cork puller” shown above belongs to Jack Ford. It is marked “Happy Days Are Here Again Pat. Pend.” The slogan most likely dates this piece to the early 1930s (1933 ended prohibition). This piece is a very simple double duty item and I am sure using the cork puller is not very easy! Does anyone else have this opener and does anyone have patent information or possibly any history behind this piece. Jack has to have the best collection of unusual flat figurals or just plain “cool openers”.



## “Opener and eBay Trivia” (“BIN” Buy-It-Now & “DNMR” Did Not Meet Reserve)

A-001-022,Fresno Var A,\$43.00	A-028-999,Crown Bottling New Ken- sington PA Leechburg PA,\$15.59	B-018-CAN,Moose Jaw Brewing (Spinner),\$12.50
A-001-025,Lembeck & Betz,\$41.67	A-028-CAN,Dominion Brewery To- ronto,\$22.17	B-019-044,Diehl,\$24.50
A-001-999,Coca-Cola Grand Island NE,\$305.99	A-029-026,Sugar Loaf (EX),\$28.99	B-019-107,Sprenger,\$52.09
A-001-999,Coca-Cola Grand Island NE,\$239.37	A-029-044,Fox Head,\$15.27	B-019-155,Willow Springs,\$78.77
A-001-999,Pisco Punch,\$16.53	A-030-004,Schotts,\$59.99	B-019-162,Townsend,\$30.44
A-003-048,Jiffy Malt Dolan Horton Co,\$26.02	A-030-999,Nehi Wichita KS,\$14.55	B-019-162,Townsend,\$27.00
A-004-013,Akron,\$12.75	A-031-001,National Oil Seals,\$9.00	B-019-245,Ulmer,\$20.55
A-004-999,Lithia Water Pueblo CO (Good),\$12.49	A-035-004,Buffalo Var A,\$20.59	B-019-CAN,Empire Brewing Brandon Manitoba,\$22.00
A-004-999,Western Bottle Co,\$35.05	A-035-004,Buffalo Var A,\$28.79	B-021-009,Cold Spring,\$22.81
A-004-AUS,Fosters Lager (Australian),\$21.03	A-035-013,Gilt Top,\$43.99	B-021-042,Chautauqua,\$24.99
A-005-061,Union Malt,\$22.50	A-035-042,Weisenberg Malt,\$16.51	B-021-057,Narragansett (Fair),\$12.50
A-005-068,Atlantic City (Good),\$18.50	A-036-999,Quaker State Oil,\$67.00	B-021-059,National , \$6.01
A-005-074,Jakes Masterbru,\$16.79	A-041-001,Medford,\$119.50	B-021-063,Quandt,\$58.97
A-005-999,Mim's Café Spokane,\$50.99	A-044-001,Cream City , \$28.02	B-021-072,Ruhstallers,\$23.75
A-009-012,Ringler Var A,\$57.56	A-053-003,Fink,\$113.61	B-021-092,York,\$38.50
A-009-012,Ringler Var B,\$36.50	A-059-999,Chero-Cola,\$32.60	B-021-116,Klausmann,\$39.09
A-009-017,Schell,\$55.05	A-070-001,Cooks (EX),\$21.55	B-021-178,Elfenbrau,\$8.77
A-009-024,Richter , \$83.99	A-504-999,Orange Crush,\$33.50	B-021-190,Park,\$17.50
A-009-024,Richter (EX),\$64.99	A-999-999,Goodyear Airplane,\$37.99	B-021-212,Portland,\$21.05
A-009-999,Waupun Bottling Works Waupun, Wis,\$42.76	B-001-005,Pittsburgh Var A,\$19.55	B-021-225,Blatz,\$56.55
A-013-001,Star,\$116.49	B-001-007,Welz & Zerweck,\$76.77	B-021-273,Lewistown,\$38.77
A-013-999,Williamson Co Newark NJ,\$21.52	B-001-008,Hamms (Good),\$32.77	B-021-338,Crescent Union,\$9.99
A-015-049,Hyde Park,\$27.11	B-001-027,Fort Pitt,\$47.99	B-021-345,Haberle,\$7.50
A-016-999,Century of Progress 1934 on Blue Button,\$51.05	B-001-032,Rubsam & Hormann (Good),\$78.77	B-021-353,Oswald (Good),\$9.38
A-016-999,Chicago 1934 World's Fair,\$34.99	B-001-999,Bacon Beverages Harris- burg,\$22.25	B-021-369,Fischbach,\$60.59
A-017-005,Kamm & Schellinger (Good),\$25.49	B-001-CAN,Yellowhead Beer,\$153.55	B-021-379,Mathie,\$18.50
A-017-039,Leisy,\$35.58	B-002-004,Feigenspan Var A,\$47.00	B-021-427,Sprenger , \$24.50
A-017-041,Klinkert (Good),\$36.50	B-002-012,United States (BIN),\$135.00	B-021-484,Goetz,\$72.05
A-017-8UL,Needham Malt (Mass) (BIN),\$40.00	B-002-999,Coca-Cola (Steel),\$63.99	B-021-570,Mathie,\$16.47
A-017-999,Metropolitan Bar Birming- ham AL,\$42.00	B-002-999,Coca-Cola (Steel),\$75.00	B-021-590,Ulmer,\$48.88
A-017-999,Pelissiers,\$24.95	B-005-003,Palouse,\$52.05	B-022-004,Falstaff,\$22.50
A-017-999,Rochester Cold Beast Gin- ger Ale,\$24.50	B-005-CAN,The Drewrys Ltd,\$77.77	B-022-011,Kessler,\$12.50
A-017-AUS,Richmond Beer (Australian),\$20.47	B-008-999,Harley-Davidson Los Ange- les,\$79.55	B-022-024,Bowler Bros,\$26.00
A-020-014,Stanton (EX),\$21.50	B-011-001,Seattle Var B,\$127.50	B-022-026,Ottawa,\$26.00
A-020-023,Koch (Good),\$62.05	B-013-127,Hop Gold,\$24.50	B-022-027,Grain Belt,\$12.59
A-020-024,Belmont,\$13.91	B-013-999,Canada Dry J J McLaughlin LTD,\$56.05	B-022-048,Michel,\$27.05
A-020-043,Sunset,\$39.99	B-014-030,Kamm & Schellinger (Mint),\$17.99	B-022-107,Gluek,\$21.58
A-021-011,Cataract,\$31.00	B-014-080,Cold Spring,\$46.99	B-022-141,Gold Bond,\$32.55
A-021-024,Leideger,\$17.00	B-014-151,Haberle,\$22.05	B-022-999,Chero-Cola (EX),\$48.99
A-021-042,Moose , \$21.55	B-014-999,Coca-Cola Bloomington IN,\$50.00	B-023-121,P O C,\$10.49
A-021-051,Engesser,\$34.75	B-014-999,Coca-Cola Springfield OH,\$73.51	B-023-133,St Claire,\$25.49
A-021-999,Budweiser Falstaff Red Top,\$9.99	B-018-027,Eulberg (2 Lines),\$24.49	B-023-192,Glennons,\$38.77
A-021-999,Coca-Cola Santa Mara San Luis Obispo,\$131.39	B-018-039,Interstate,\$25.35	B-023-999,Coca-Cola / Mides Soda (BIN),\$62.00
A-021-999,Pepsi=Cola (Fake),\$43.01	B-018-059,Park,\$22.50	B-023-CAN,Cronmiller & White Brew Welland Ont (BIN),\$70.00
A-025-001,Hamms,\$56.05	B-018-193,Imperial Pilsener,\$14.95	B-024-012,Effinger , \$10.99
	B-018-315,Tennessee,\$30.59	B-024-063,Dicks,\$11.99
	B-018-356,Goenner & Co,\$11.01	B-024-102,Yuengling,\$26.00
	B-018-357,Goetz (Good),\$9.99	B-025-002,Buckeye,\$43.99
	B-018-488,Sunset,\$17.16	B-027-001,Miller Var B,\$55.00
	B-018-562,Kiko Malt,\$11.84	B-029-999,Coca-Cola,\$32.99
	B-018-999,Coca-Cola / Nelin Rockford IL,\$37.99	B-033-002,Heileman,\$15.09
		B-033-002,Heileman Var A,\$23.91
		B-033-8UL,Prima Beer,\$51.01
		B-035-001,Star,\$18.51
		B-038-005,Atlas Malt,\$29.99
		B-042-999,Chero-Cola (Good),\$19.37
		B-053-002,Richter (Good),\$84.43

“Opener and eBay Trivia” (“BIN” Buy-It-Now & “DNMR” Did Not Meet Reserve)

C-001-003,Edelweiss (EX),\$43.52	ties,\$41.40	K-002-008,Pearl KegKans,\$32.05
C-001-005,Manru,\$47.99	F-006-999,Coca-Cola Wichita KS , \$70.52	K-012-001,Lone Star (EX),\$307.59
C-002-001,Phoenix,\$36.41	F-999-999,(Ladle) Quakertown PA,\$46.55	L-001-005,Pabst,\$43.50
C-010-041,Cadillac,\$21.37	FBOC-038,All American (EX) (On Ash-tray),\$450.00	L-001-006,Ruppert (EX),\$15.50
C-012-013,Hawaii (EX),\$26.51	FBOC-157,Saw Fish,\$281.00	L-001-999,(Bottle Shaped) Canada Dry Ginger Ale (EX),\$128.05
C-012-CAN,Newfoundland Brewery LTD (BIN),\$55.00	FBOC-408,Miss Four Eyes (MIB),\$41.00	L-002-001,A-B Var A,\$30.99
C-013-050,Glennons,\$21.77	FBOC-416,Mr Dry,\$41.30	L-002-001,A-B Var A , \$47.68
C-017-037,Largay (Good),\$16.50	FBOC-423,Skull (Original),\$399.00	L-002-001,A-B Var A (EX),\$41.00
C-023-001,Jackson,\$11.49	FBOC-423,Skull (Original) (eBay Live),\$300.00	L-002-001,A-B Var A (EX),\$37.56
CBO-BUT-03,Red Dot Cigars (EX),\$22.48	FBOC-423,Skull (Repro),\$381.00	L-002-001,A-B Var B (EX),\$26.05
D-001-001,A-B Var A,\$15.75	FBOC-423,Skull (Repro),\$306.00	L-002-999,McCarthys Oyster House Pittsburg,\$79.00
D-001-001,A-B Var A,\$38.00	FBOC-423,Skull (Repro),\$355.00	L-002-999,National Bottlers Gazette (Fair),\$92.00
D-001-001,A-B Var B,\$76.01	FBOC-423,Skull (Repro),\$188.88	L-002-999,Old Capitol Rye St Louis,\$105.50
D-001-001,A-B Var B,\$21.75	FBOC-423,Skull (Repro),\$57.56	L-002-999,Sterling Silver,\$150.00
D-001-019,Strohs,\$25.29	FBOC-423,Skull (Repro),\$83.50	L-004-028,Yankee,\$53.72
D-003-8UL,Terra Haute / Velvet,\$38.09	FBOC-423,Skull (Repro),\$58.56	L-004-060,Schlitz 1939 NYWF,\$45.75
D-011-001,Hagerstown,\$62.00	FBOC-423,Skull (Repro),\$23.37	L-004-999,Duquesne Beer (Real???)\$36.00
D-025-8UL,Schmubach Brewing Wheeling WV,\$34.75	FBOC-423,Skull (Repro),\$22.56	L-004-999,Miller Beer (Real ???),\$42.00
E-001-038,Boyertown,\$18.75	FBOC-423,Skull (Repro),\$11.50	L-004-999,Pabst Beer (Real ???),\$47.00
E-004-086,Southeastern,\$56.00	FBOC-423,Skull (Repro) , \$12.50	L-004-999,Schmidt Beer (Real ???),\$41.00
E-004-204,Weibel,\$34.68	FBOC-423,Skull (Repro) (BIN),\$15.00	M-001-004,Haffenreffer , \$96.00
E-004-999,Orange Crush Nehi,\$17.49	FBOC-423,Skull (Repro) (BIN),\$15.00	M-001-008,Liebmann Scotch Brew,\$129.00
E-004-999,Vernors Ginger Ale,\$23.56	G-001-006,Dr Miller,\$21.05	M-002-013,Canandaigua,\$62.05
E-005-068,Champagne Velvet,\$13.63	G-001-013,Grand Prize South,\$13.01	M-003-004,Dauefers (EX),\$54.88
E-005-999,Pepsi=Cola Columbus MS,\$42.00	G-001-023,Quandt,\$16.90	M-003-006,Standard (Green) (EX),\$151.05
E-005-999,Pepsi=Cola Hutchinson KS,\$37.77	G-001-036,Marathon City,\$13.35	M-003-009,Brackenridge (Good),\$76.00
E-006-065,Bridgeport,\$15.00	G-001-999,Lime Cola,\$11.25	M-003-014,Piels,\$23.02
E-007-CAN,Saskatoon Beer (BIN),\$24.99	G-005-008,Wetterer,\$31.00	M-003-016,Barbeys (OTT) (EX),\$21.00
E-008-020,Hamms,\$9.99	G-005-027,Schooner Brew,\$41.01	M-003-017,Schorr-Kolkschneider,\$31.00
E-008-040,Red Top Malt,\$27.78	G-005-999,Coca-Cola (Good),\$32.00	M-003-023,F & S (EX),\$354.99
E-008-CAN,O'Keefes Lager / Ale (BIN),\$45.00	G-019-001,Bartholomay,\$53.99	M-003-025,Harrison Golden Brew,\$181.55
E-009-099,Bowler Brothers,\$32.68	H-001-008,Norton,\$22.49	M-003-029,Victor,\$46.99
E-009-CAN,Golden West Brewery Calgary ALB,\$61.00	H-001-031,Haefner,\$36.00	M-003-033,Moose (EX),\$190.29
E-014-098,Fresno , \$46.00	H-001-044,Norton Gold Band (Good),\$22.00	M-003-033,Moose (Good),\$59.88
E-014-150,Holihans,\$21.27	H-005-016,Hazelton,\$10.31	M-003-035,Duquesne (Fair),\$157.55
E-014-181,Kato,\$28.88	H-006-999,(2) #17 Miller #18 Strohs,\$29.99	M-003-999,Cleveland Towel Co (Orange) (EX),\$33.68
E-014-364,Fritz,\$28.78	H-006-999,(2) #17 Miller #18 Strohs,\$42.99	M-003-999,Hunter Island Inn , \$39.99
E-014-365,Gallatin,\$26.09	H-008-019,Atlantic,\$42.05	M-003-999,Moxie,\$30.00
E-014-486,Dallas-Ft Worth,\$12.51	H-008-019,Atlantic,\$42.55	M-015-001,Miller (EX),\$30.99
E-014-576,Ziegler,\$31.09	H-008-999,Pepsi=Cola,\$29.55	M-019-002,Miller,\$52.00
E-014-592,Chautauqua,\$49.96	H-008-999,Pepsi=Cola,\$26.01	M-019-003,Narragansett,\$34.71
E-014-592,Chautauqua,\$29.87	H-010-CAN,American Brew Rice Beer,\$27.99	M-019-999,Coca-Cola (Fake),\$76.69
E-014-602,Fergus,\$99.00	I-007-028,New England (Fair),\$5.51	M-019-999,Coca-Cola (Fake),\$45.44
E-014-690,Glacier , \$51.89	I-008-002,Northampton,\$9.49	M-019-999,Pepsi=Cola,\$112.50
E-022-999,Suncrush 1000 Pound Drink,\$21.28	J-007-004,Schaefer , \$15.00	M-019-999,Pepsi=Cola,\$86.00
E-025-013,Hauck,\$78.77	K-001-006,Budweiser , \$39.99	M-025-001,Lemp,\$47.00
F-002-013,Grain Belt,\$10.50	K-002-003,Jackson (EX),\$22.45	M-025-001,Lemp,\$51.00
F-002-999,Dr Pepper Arkansas City KS,\$68.00	K-002-003,Jackson (EX),\$20.50	M-027-001,Lone Star (EX),\$33.05
F-003-001,Potosi,\$16.26	K-002-003,Jackson (EX),\$30.54	M-027-001,Lone Star (EX),\$46.99
F-004-031,Matz,\$19.49	K-002-003,Jackson (Good),\$43.00	
F-005-999,Coca-Cola Sterilized Bot-	K-002-004,Blatz,\$111.05	
	K-002-006,Pearl (Fair),\$34.80	

## “Opener and eBay Trivia” (“BIN” Buy-It-Now & “DNMR” Did Not Meet Reserve)

M-029-021,Jax,\$16.02	O-005-999,Pep (EX),\$145.05	R-006-002,Sprenger (No Paint),\$204.49
M-029-8UL,Dakota Brewing ,\$71.99	O-005-999,Rock Spring (MIB),\$20.50	Z-Corkscrew,English 1795 Henshall Patent,\$2,850.00
M-030-040,Deer Park (Red) (EX),\$265.00	O-008-8UL,Flocks It Stands On Top Williamsport PA,\$216.49	Z-Corkscrew,English 1864 Hulls Royal Club Patent (BIN),\$4,594.80
M-031-004,Pfeiffer,\$14.17	O-008-999,Big Boy Beverages,\$20.50	Z-Corkscrew,English 19th Cent Double Folding Beau Brummel,\$1,830.43
M-037-001,Schlitz (EX),\$33.99	O-008-999,Nehi (Double Patent #s),\$41.01	Z-Corkscrew,English 19th Cent Double Folding Beau Brummel,\$1,913.07
M-048-001,Bullfrog,\$36.00	O-008-999,Nu Grape Flint Bottling,\$19.05	Z-Corkscrew,English 19th Cent Double Folding Beau Brummel,\$1,400.00
M-060-005,Stag Newbaden IL,\$26.42	O-016-002,Stegmaier (MIB),\$18.05	Z-Corkscrew,English 19th Cent Hipkins Bow & Cod Bottle Opener,\$4,971.38
M-073-004,Missoula,\$77.00	O-016-002,Stegmaier (MIB),\$13.49	Z-Corkscrew,English 19th Cent Mauds Patent,\$1,458.62
M-073-999,Hotel Gowman (Red) (EX),\$112.49	O-017-001,Rolling Rock (MIB),\$102.50	Z-Corkscrew,English 19th Cent Thomason Autumnal Fruit,\$1,784.10
M-073-999,Texaco Butte MT (EX),\$79.99	O-017-001,Rolling Rock (Mint),\$56.99	Z-Corkscrew,European Foldup Pocket (Steel),\$480.00
M-073-999,Texaco Butte MT (EX),\$89.01	O-502-999,Coca-Cola (Screw Hole Broke Off),\$114.05	Z-Corkscrew,French 18th Cent Steel Cage,\$2,171.76
N-004-999,Nugrape , \$20.50	O-502-999,The Liquid,\$66.00	Z-Corkscrew,German 1887 Fulda Patent Folding Bow,\$1,382.00
N-004-999,Snyder Sodas Battle Creek MI (EX),\$27.76	O-502-999,The Liquid,\$31.00	Z-Corkscrew,German 1890s Folding Celluloid Woman w/ Knife,\$1,380.00
N-008-002,Haberle,\$49.99	O-505-999,Icy-O,\$129.00	Z-Corkscrew,German 1890s Folding Legs (Wavy Stripes),\$648.00
N-010-007,Atlas Geo Miller,\$47.00	O-505-999,Nehi,\$108.50	Z-Corkscrew,German 1890s Folding Metal Legs J S Perrine,\$627.00
N-022-005,Lakeside,\$42.75	O-505-999,Whistle,\$102.50	Z-Corkscrew,German 1890s Steel Folding Legs (BIN),\$999.00
N-022-099,Fredericks,\$27.60	O-505-999,Whistle (Repainted),\$77.52	Z-Corkscrew,German 1895 Voigt Patent,\$275.00
N-023-8UL,Hudepohl Brewing Co Hudepohl Beer (EX),\$22.50	P-001-002,A-B Var A (EX),\$104.00	Z-Corkscrew,German 1898 Bowers Patent Celluloid Woman w/ Skirt,\$1,380.00
N-024-001,Stag (EX),\$33.50	P-003-001,Pabst,\$92.99	Z-Corkscrew,German 19th Cent 6-Tool Folding Bow,\$530.00
N-027-8UL,Pearl Beer Boehme Castroville TX,\$24.99	P-005-001,Anheuser-Busch,\$87.59	Z-Corkscrew,German 19th Cent CBO Tool Patent #42057,\$1,135.00
N-029-007,Fredericks,\$11.00	P-007-054,El Paso,\$38.00	Z-Corkscrew,German 19th Cent Celluloid Alligator Waiter's Friend,\$1,000.00
N-034-001,Champagne Velvet,\$25.01	P-008-038,Strohs,\$28.79	Z-Corkscrew,German 19th Cent Prong Puller , \$3,327.77
N-036-8UL,Hamms Jackson Wholesale Co,\$56.25	P-008-065,Atlanta,\$58.00	Z-Corkscrew,German 19th Cent Trumpf Patent,\$2,500.00
N-040-001,Miller,\$31.00	P-008-152,Iroquois (Good),\$19.99	Z-Corkscrew,German Dreadnought Patent #6570,\$7,223.00
N-040-017,Budweiser,\$46.95	P-008-186,Goebel , \$78.77	Z-Corkscrew,Pistol w/ Corkscrew Trigger,\$2,850.00
N-040-030,Lone Star (EX),\$77.01	P-010-055,Tennessee,\$42.53	Z-Corkscrew,Silver Roundlet w/ Articulated Worm,\$1,450.00
N-077-001,Oshkosh,\$21.83	P-013-001,Schlitz (EX),\$316.00	Z-Corkscrew,Swedish 19th Cent Snuff Box,\$1,192.73
N-078-999,Chero-Cola (EX),\$77.61	P-013-001,Schlitz (Fair),\$99.99	Z-Corkscrew,Swedish Sloor Patent,\$460.89
N-078-999,Chero-Cola (Good),\$62.99	P-014-004,XXX Sidney,\$44.00	Z-Corkscrew,US 1851 Goodyear Patent (1 Small & 1 Large) (BIN),\$300.00
N-086-001,Nevin-Frank,\$52.00	P-015-010,Ballantine,\$39.50	
N-087-999,Coca-Cola / Merry Christmas,\$400.00	P-017-005,Gerke,\$46.00	
N-087-CAN,Kuntz Brewery Waterloo,\$216.49	P-019-069,Union , \$22.50	
N-103-001,Spokane,\$228.19	P-024-999,Ozonate Lithia Water,\$17.39	
N-506-999,Coca-Cola,\$43.52	P-025-003,A-B (Kastor) (EX),\$177.50	
N-506-999,Coca-Cola,\$52.00	P-025-003,A-B Knife 2001 Edition (MIB),\$207.26	
N-506-999,Coca-Cola (EX),\$107.50	P-025-003,Anheuser-Busch,\$315.00	
N-510-999,Coca-Cola (MIB),\$29.89	P-026-008,A-B (All Green),\$689.00	
N-511-999,Coca-Cola (MIB),\$47.11	P-026-008,A-B (All Red),\$3,050.00	
O-001-004,Miller,\$17.60	P-028-001,Buffalo,\$66.00	
O-003-001,Valley Forge (MIB),\$19.09	P-028-004,Rainier Var A (Good),\$74.99	
O-004-003,Gibbons (MIB),\$24.00	P-032-001,Saginaw (BIN),\$49.99	
O-004-005,Hyde Park (MIB),\$41.00	P-032-001,Saginaw (Good) , \$117.50	
O-004-999,7Up (MIB),\$17.10	P-032-001,Saginaw (Good) (BIN),\$20.10	
O-004-999,Mission Beverages (MIB),\$11.95	P-038-001,Anheuser-Busch (Good),\$307.77	
O-004-999,Ohio Bottle Cap Co Piqua OH (MIB),\$27.50	P-064-001,Hamms (Fair to Good),\$450.00	
O-005-007,Lucky Lager (MIB),\$30.69	P-068-999,(Meat Cleaver) Sanitary Meat Wittenberg WI,\$181.50	
O-005-008,Pearl (MIB),\$40.00	P-082-001,Anheuser-Busch,\$38.87	
O-005-009,Falstaff (EX),\$26.00	P-090-8UL,Anheuser-Busch Agent Franfort IN (Good) (BIN),\$34.00	
O-005-017,Burgermeister (MIB),\$14.60	P-131-001,A-B,\$46.01	
O-005-999,Green Spot,\$46.21	P-503-999,Clicquot Club,\$306.12	
O-005-999,Pelco,\$56.56	P-506-999,Coca-Cola,\$153.61	
	R-005-001,Schlitz,\$36.00	



**“Opener and eBay Trivia” (“BIN” Buy-It-Now & “DNMR” Did Not Meet Reserve)**

- Z-Corkscrew,US 1860 Blake Patent,\$6,150.00
- Z-Corkscrew,US 1876 Williamson Power Cone,\$356.00
- Z-Corkscrew,US 1878 Sperry Pump Patent (DNMR),\$2,225.00
- Z-Corkscrew,US 1883 Strait Patent,\$599.00
- Z-Corkscrew,US 1884 Curley Cast Iron T Patent,\$638.00
- Z-Corkscrew,US 1884 Curley Wood T Patent,\$361.00
- Z-Corkscrew,US 1886 Hurley Patent w/ F F Adams & Co Ad,\$765.01
- Z-Corkscrew,US 1887 Becker Magie Patent Flip-Out Pocket,\$3,272.00
- Z-Corkscrew,US 1888 Fairchild Patent,\$425.99
- Z-Corkscrew,US 1892 Mumford Patent,\$381.00
- Z-Corkscrew,US 1892 Mumford Patent,\$511.00
- Z-Corkscrew,US 1892 Mumford Patent,\$291.00
- Z-Corkscrew,US 1894 Puddefoot Detroit Leg Patent,\$3,189.00
- Z-Corkscrew,US 1917 Brady Uneek Patent,\$676.99
- Z-Corkscrew,US 1917 Brady Uneek Patent,\$755.89
- Z-Corkscrew,US 1917 Brady Uneek Patent,\$535.00
- Z-Corkscrew,US 1917 Brady U-Neek Patent,\$850.00
- Z-Corkscrew,US 1918 Parella Opener/Sardine Fork Patent,\$175.00
- Z-Corkscrew,US 1932 Bridgewater Patent,\$273.99
- Z-Corkscrew,US 1932 Bridgewater Patent,\$310.52
- Z-Corkscrew,US 1938 Smythe Hootch Owl Patent (BIN),\$2,500.00
- Z-Corkscrew,US Steel Loop Handle Williamson,\$324.00
- Z-Corkscrew,US Sterling Corkscrew in Golf Bag,\$284.00
- Z-Corkscrew,US Sterling Hollweg w/ Cap Lifter,\$379.94
- Z-Corkscrew,US Syroco Clown (EX),\$898.00
- Z-Corkscrew,US Syroco Golden Knight,\$1,776.01
- Z-Corkscrew,US Syroco Golden Knight,\$2,502.00
- Z-Corkscrew,US Syroco Indian,\$1,009.00
- Z-Corkscrew,US Syroco Indian,\$1,100.00



Part of Gary Deachman’s collection. He has a couple of large white peg boards boxed in but with no glass front. He can put openers on the top and the pegs allow him to display his openers just about anyway he wants. Below part of his M-1 Collection.





**JFO & Other Clubs/Conventions (Newsletter Name in Italics)**

**American Breweriana Association (ABA):** *American Breweriana Journal* (bi-monthly) on breweriana collecting. Dues \$25.00/year. ABA, PO Box 595767, Fort Gratiot MI 48059-5767

**2007 Jun 12-16 – 26th Annual ABA Convention – Holiday Inn Portland Airport Portland OR– ABA Members Only (Saturday Public Show).** Contact Jean Tieg, E-Mail jeannelt@aol.com

**Canadian Brewerianist:** *The Canadian Brewerianist* (bi-monthly) on Canadian breweriana collecting. Dues \$25.00/year (US Funds). Loren Newman, 2978 Lakeview Trail, Bright's Grove, Ontario, CANADA, N0N 1C0

**2007 Aug 8-11 – Canadian Brewerianist Annual Convention – Fernie BC – All Breweriana Collectors Welcomed.** Contact Larry Sherk, E-Mail larrysherk@hotmail.com, (416) 465-3386

**Canadian Corkscrew Collectors Club (CCCC):** *The Quarterly Worme* (quarterly) on corkscrew collecting. Dues \$30.00/year. Milt Becker, PO Box 9863, Englewood NJ 07631

**East Coast Breweriana Association (ECBA):** *The Keg* (quarterly) on breweriana collecting. Dues \$25.00/year. ECBA, PO Box 1392, Doylestown PA 18901

**2007 Jul 11-14 – 35th Annual ECBA Convention – Sheraton Park Ridge Hotel King of Prussia PA – ECBA Members Only (Saturday Public Show).** Contact Larry Handy, E-Mail ohhugo1@aol.com

**Figural Bottle Opener Club (FBOC):** *The Opener* (quarterly) on cast iron openers. Color guide book: \$23.85/Non Members or \$18.85/Members. Dues \$20.00/year. Lyle Moreland, 864 Jeanette Ave, Baltimore MD 21222

**Annual FBOC Convention Reading PA (June of Each Year).** Contact Sandra Emme, E-Mail emmyaward@yahoo.com

**Just For Openers (JFO):** *Just For Openers* (quarterly) on all areas of opener collecting (with an auction each issue). Dues \$20.00/year. John Stanley, PO Box 64, Chapel Hill NC 27514-0064

**2007 Apr 25-29 – 29th Annual Just For Openers Convention – Holiday Inn Holidrome New Cumberland PA – All Opener / Corkscrew / Breweriana Collectors Welcomed.** Contact John Stanley, E-Mail jfo@mindspring.com

**National Association Breweriana Advertising (NABA):** *The Breweriana Collector* (quarterly) on breweriana collecting. Dues \$25.00/year. NABA, PO Box 64, Chapel Hill NC 27514-0064

**2007 Aug 1-5 – 36th Annual NABA Convention – Doubletree Inn Bay City MI – NABA Members Only (Saturday Public Show).** Contact John Stanley, E-Mail naba@mindspring.com

**SHOWS (Good Sources for Openers & Corkscrews)**

**2007 Feb 16-17 – 28th Annual Blue & Gray Breweriana Show – Ramada Inn Holidrome Fredricksburg VA – All JFO Members Welcomed.** Contact: John Fisher, PO Box 953, Benedict MD 20612-0953, (301) 274-3340

**2007 Mar 11 – Annual Spring Breweriana & Beer Can Show – Sokol Hall 2234 S 13th St Omaha NE – 9AM to 3PM (8' Tables \$18 Each). Hospitality Room (Sat Evening Comfort Inn I-80 & 13th St Exit).** Contact John Mlady (402) 345-7909

**2007 Sep 13-15 – 25th Annual Midwest Breweriana Show – Mid America Center Council Bluffs IA – JFO Members Welcomed.** Contact John Mlady (402) 345-7909 or Bill Baburek, (888) 569-7924 E-Mail bjbaburek@cox.net

**WANTED (Please remember there is no charge for Ads)**

**Schlitz Openers: A-20-52,42,35,51, A-21-58,8,115,79, A-23-7, A-35-30,45. Buy or possibly Trade.** Mike Krejci, W19103 Lake St, Aniwa WI 54408, (715) 449-3523, Email pigpen1952@juno.com

**Adler Brau Openers: B-18-491, E-4-262, H-11-1, I-17-259, N-83-1. D-9 Openers: #3, 5,9,10, 12, 14, 15, 16, 17, 18, 19. Also Looking for H-7 & H-11 Openers.** Russ Adler, W11307 Cty Rd V, Lodi WI 53555-9628, (608) 592-5766

**Starr Openers to trade, send for current list.** Don Stinson, PO Box 105, 143 Haskins Point Road, Seeley's Bay, Ontario Canada, K0H 2N0, (613) 387-3100, Email rideaubreeze@bellnet.ca

**I-7 Vaughan's Quick & Easy, I-7 45,82,46,79,84,78,54,30,55, 57,81,83.** Also any Variations, Non-Beer/Generics. Have Traders/Cash. **Also H-3-34 Continental Can.** Jim Pokrywka, 279 Pearl St, Seymour CT 06483, Email jimpokrywka@sbcglobal.net

**Wisconsin Brewery Openers: Knapstein, Hortonville, Princeton, Hochgreve, Bleser, Shawano & Rahr; esp A-17-27 Rahr.** Dan Mayville, E7446 County Road H, Fremont WI 54940-9747

**E-14s 3,34,35,38,41,44,61,78,83,95,96,98,99.** Darwin Miller, 32 La Canada Way, Hot Spring Village AR, 71909, (501) 922-1615

**B-2s #21 Fresno Local, #22 Haenle, #29 Gold Nugget, #37 Flecks, #39 R. I. B., #40 Anheuser.** Bill Arber, 11162 Broadway St, Alden NY 14004-9515, (716)681-4833, Email wrabra@aol.com

**C-39, D-12, D-24, E-22, M-52, M-68, M-103, O-511, all types.** Will buy or trade. Mark Woodard, 1126 Riverboat Court, Annapolis MD 21409, (443) 756-2815, Email mark.woodard@nasa.gov

**Just for Openers Display Contests**  
**2 Contests 1) Regular 2) Best In Show**  
**1) Regular Display Contest**  
**(Any Group of Openers or Corkscrews)**  
**1st, 2nd & 3rd Places (Awarded)**  
**2) "Best In Show Bill McKenzie Award"**  
**One Opener or Corkscrew: Beer/Non-Beer**  
**(Note Just One Winner for Best In Show)**

**WANTED (Please remember there is no charge for Ads)**

**Golden Glow Openers: A-1-9, B-23-149, E-14-787, O-4-22 & A-12-12 Grace Bros. Rainier Openers: B-3-5, B-19-135, B-21-130, E-9-80, F-21-2, N-11-5 & 15, P-19-7, P-53-6, P-54-18. P-85s: 3,4,5,11,14.** Also any Breweriana from Rainier (Seattle WA, LA CA, SF CA), Golden West (Oakland CA) & Port Townsend (WA). Buy/Trade. John Cartwright, 1548 Via Arroyo, Paso Robles CA 93446, (805) 226-9270

**A-3-19 Stone Malt Akron.** Great Trades or Buy. Jeb Burruss, 318 Lost Oak Dr, Canyon Lake TX 78133, (830) 899-7241

**A-9s: 26 Penn, 46 Tivoli, 29 Waldorf, B-9-2 Salinas, B-9-10 Ambrosia, B-7 (Beer), B-22 (Beer), B-31-11 Bellingham Bay, C-21-6 Grand Rapids, D-16-1 New Kentucky, E-17s: 1 American, 9 Everett, 12 Lion, G-1s: 31 Griesedieck Bros, 68 Glennon, 69 Leidiger 3-V Bev, 70 Fox Lake, G-5s: 2,9,18,22,23,28,29,33,39,40,45,46,48,50, H-1s: 8,12,21,26,27,34,35,39, 42,44,51, O-1-2 Leidigers, O-505 Lime Cola & O-505 Saegertown** John Stanley, PO Box 64, Chapel Hill NC 27514, (919) 419-1546, jfo@mindspring.com

**A-17 "Wilber Brewery" & P-8 Corkscrew "Omaha Brewing Association" (EX Cond. Only).** Will purchase outright. John Mlady, 1506 S 25th St, Omaha NE 68105-2611, (402) 345-7909

**A-22-1 Ballantine, Openers with the word Saloon, Mexican A, B & D style Openers.** Great Trades Available. Jack Ford, 5351 Boyd Ave, Oakland CA 94618, (510) 655-5393

**A-43-Dixie Beer.** (Buying). Marc Benjamin, 167 Nixon Beach Rd, Edenton NC 27932, (919) 482-2099

**B-24-95 Flecks Beverages.** Al Fleckenstein, 2445 NW Raleigh St, Portland OR 97210, (503) 223-0123, flecks@spiritone.com

**B-45, B-66, I-7, P-72, P-100, R-14 types with a Corkscrew (Beer/Non-Beer) & Silver Top Beer Openers.** Herb Danziger, 550 Cherry Ct, Birmingham MI 48009-1459, (810) 646-9470

**Bond and Lillard Openers (would like to buy). Have A-29, would like any others. Lillard is a family name.** George Love, 4301 Forest Plaza Dr, Hixson TN 37343, (423) 877-6006

**C-49-11 Bud Fort Collins, C-49-21 Coors Original, C-49-22 Flying Dog, C-49-33 Moose, C-49-34 Rock Bottom,** Harold Queen, 1001 Centre Ave, Jim Thorpe PA 18229, (717) 325-2612

**"E"s! Have Trade List (All Types) or Will Buy. Top 10 List: E-6-208 Old Lancaster, E-14-832 Uneeda, E-7-77 Lima, E-4-207 Yosemite, E-14-626 Modesto, E-16-11 Ganser, E-18-4 American, E-8 #24 & #25 New Braunfels, E-6-213 Kips Bay.** Larry Moter, 10149 Michaels Rd, Woodford VA 22580, (804) 448-3928 E-Mail accneca@aol.com

**"E" Type Openers Wanted. Will Trade my "C", "E" and "I" Types.** Send trade list and I'll send my list. Ralph Tewksbury, 84 Wildwood Dr, Parkersburg WV 26101 (304) 863-3627

**G-4s: #10 Jung, #13 Point, #15 520, #18 Southern, #20 Walters, also "I-5"s, "E-14"s, "B-24"s, "G-1"s. Send for Want List.** John Patton, 9224 Sugarloaf Dr, Redding CA 96001

**"I"s to Complete my collection. Please send me a list of your extra "I"s w/ prices. I will respond!** Tom Gormally, 22555 Cardiff Dr, Santa Clarita CA 91350, (661) 291-1392, Email tomphyllis@ca.rr.com

**I-2s 1 Atlas, 2 Beverwyck, 3 Drewrys, 7 Mitchell, J-8-13 Ballantine, J-8-14 DuBois. Cash/Trade.** Ben Hoffman, 213 Simmons Rd, Perkiomenville PA 18704, (610) 287-8243 or Email benbey@netcarrier.com

**I-7-46 Berghoff: \$10 for Photocopy: Does It Exist???** Hale Milano, 506 Springhouse Rd, Camp Hill PA 17011-1454, (717) 737-5067

**J-6s: 2-4-18-19-21-23-25-28-29-36-37-39-43-46-47, Will Pay \$4 Each plus Postage.** Ollie Hibbeler, 535 Villa Piazza Ct, O'Fallon MO 63366

**Atlas Prager Openers: A-21-46, A-21-69, B-24-58, B-24-103, B-28-2, E-5-70, E-7-1, E-8-32, E-14-755, E-14-657, E-14-719, F-4-36, H-2-166, N-10-6, N-10-7, O-8-3, O-8-17, P-66-4.** Dave Lendy, 1927 Allen Dr, Geneva IL 60134, (630) 208-6950

**Bottle Shaped and/or Openers with Bottle on them. Especially want M-1-7 King's Chremal & M-2-5 Bartholomay!** Gary Deachman, PO Box 438, North Woodstock NH 03262

**Chester PA Openers: B-18-192 Peerless, B-21-557 Haser, C-12-71 Chester, P-7-46 Stoeckle, and A-17-14 & A-43-3 Soda Openers with ad for "Penn Brand".** Joseph Knapp, 211-A Berbro Ave, Upper Darby PA 19082, (610) 352-5055

**Cigar Box Openers (CBOs)-Any Unusual-Write with Details** Ken Hoesch, PO Box 299, Zeeland MI 49464-0299

**Corkscrews-Cork Pullers-Syroco (esp Golden Knight & Clown)-Early US Patents-Anything Unusual.** Have Corkscrews to Trade or Buy. Please send description to Paul Luchsinger, 2815 King Rook Ct, Williamsburg VA 23185, (757) 345-3984, Email paulcork@cox.net

**Corkscrews & Tin Can Openers: Beer Openers for Trade.** Joe Young, 36 S Weston Ave, Elgin IL (847) 695-0108

**Corkscrews, Beer Advertising Letter Openers, & Postcards depicting Corkscrews.** Please send description, photo, sketch, photocopy, or tracing of what you have and advise price wanted. Don Bull, PO Box 596, Wirtz VA 24184, (540) 721-1128, E-Mail corkscrew@bullworks.net

**Corkscrews: Esp. Walker's "Waiters & Hallboys" and old Williamson wire shafted "T"s with attachments to wood handle (such as brushes/wire cutters).** John Vlossak, 1044 East Eldorado St, Appleton WI 54911, (414) 739-2789

**Figural Corkscrews and any WASHINGTON D.C. Openers and/or Corkscrews.** Sandra Emme, PO Box 1454, Upper Marlboro MD 20773, (301) 627-8207

**Hartford, Connecticut Openers & Breweriana Wanted, esp. E-8-61 Fischer & P-17-4 Columbia. Also general CT and New England Beer Openers.** Edward Johnson, 1300 Poquonock Ave, Windsor CT 06095, Email johnsoned1777@hotmail.com

Openers from **Jamestown Brewing Co, Kuhn's Beer, Chautauqua Brew, Monessen, PA, Independent Brewing Co, Schaefer, & all Cleveland Beers.** Ed Schaefer, PO Box 149, Maple Springs NY 14756, Email eschaeferbeer@juno.com

**Joliet IL Openers: Citizens: B-14-97, C-17-69, E-1-32, E-3-12, E-4-175, K-5-6, O-10-1, P-121-1, Porter: A-17-24, B-18-594,618, B-21-199, F-6-9, Sehrings: B-21-561, G-9-39.** John Bitterman, jebitter@aol.com

**Minnesota Openers: A-1-73, A-21,63,77,128, A-29-22, A-33-5, A-45-1, B-7-3, B-13-12, B-18-330, B-21-322, O-1-1, O-2-14, P-7-13, P-146-1.** Pat Stambaugh, 718 S Lakeshore Dr, Lake City MN 55401

**Montana & Idaho Beer/Brewery Openers & Breweriana. Also H-8 & L-1 Openers to complete collection.** Steve Armstrong, PO Box 741, Kamiah ID 83536, sunset@cybrquest.com

**New York Openers: E-4-345 Koch, G-1-67 Hupfel. Will Buy/Trade.** Mark Barren, 6141 Tachi Dr., Newfane NY 14108-9517, (716) 778-9724

**Pinney Beverage Items Wanted: Pens & Pencils, Bottle & Can Openers, Any item imprinted with Pinney Beverage Company, Salt Lake City, Utah.** Dave Pinney, 1766 Red Barn Road, Encinitas CA 92024, (760) 753-8151, Email davecent@tmisnet.com

**SELLING (Please remember there is no charge for Ads)**

JFO Set Back Issues: 1979-1993 \$30 or 1994-2006 (\$30) (US Shipping Only) John Stanley, PO Box 64, Chapel Hill NC 27514

"American Breweries II": by Dale Van Wieren. Over 18,000 entries for nearly 8,000 brewing firms, tracing names, addresses, and dates of operation. (\$20 Priority Mail). John Stanley, PO Box 64, Chapel Hill NC 27514

2007 Handbook of United States Beer Advertising Openers and Corkscrews (contains 16,000 Listings & pictures 1100 Types (Black & White Copies)). Print from the JFO website at www.just-for-openers.org

2005 Inventory of Canadian Beer Advertising Openers & Corkscrews (contains 2,000 Listings & drawings for 250 Types (Black & White Copies)). \$24 US sent book rate. George Vine, 219 Murray, Greenfield Park, Quebec, Canada J4V 1N5

"Just For Openers" "A Guide to Beer, Soda, & Other Openers" by Donald A. Bull & John R. Stanley, 160 Pages, 380 Color Pictures, \$26.95 plus \$3.95 shipping (US Only). Bullworks, PO Box 596, Wirtz VA 24184

"Soda Advertising Openers" by Donald A. Bull & John R. Stanley, 160 Pages, Over 275 Color Pictures & 2500 Listings, \$26.95 plus \$3.95 shipping (US Only). Bullworks, PO Box 596, Wirtz VA 24184

"Beer Advertising: Knives, Letter Openers, Ice Picks, Cigar Cutters and More" by Donald A. Bull, 180 Pages, Over 500 Color Pictures, \$26.95 plus \$3.95 shipping (US Only). Bullworks, PO Box 596, Wirtz VA 24184

"The Ultimate Corkscrew Book" by Donald A. Bull, Hardcover Book Weighs 5 Lbs, 744 Color Photographs, 3746 Corkscrews with Values, \$75.00 plus \$8.80 shipping (US Only). Bullworks, PO Box 596, Wirtz VA 24184

"Bull's Pocket Guide to Corkscrews" by Donald A. Bull, 190 Pages, Over 200 Color Photographs, 942 Corkscrews with Values, \$18.00 plus \$3.95 shipping (US Only). Bullworks, PO Box 596, Wirtz VA 24184

"Boxes Full of Corkscrews" by Donald A. Bull, 236 Pages, Over 836 Color Photographs, 95% New Information with Values, \$47.95 plus \$7.70 shipping (US Only). Bullworks, PO Box 596, Wirtz VA 24184

"ANRI Woodcarvings: Bottle Stoppers, Corkscrews, Nutcrackers, Toothpick Holders, Smoking Accessories and More" by Philly Rains and Donald A. Bull, 272 Pages, Over 800 Color Photographs picturing more than 2500 ANRI Carvings with detailed information, \$62.95 plus \$7.70 shipping (US Only). Bullworks, PO Box 596, Wirtz VA 24184

"Hometown Beer - A History of Kansas City's Breweries" by H James Maxwell & Bob Sullivan Jr, Hardback w/ 300 Pages, 585 Pictures (352 Color), \$39.95 Postpaid (US). H. James Maxwell, 1050 West Blue Ridge Blvd, Kansas City MO 64145-1216

"Figural Bottle Openers Identification Guide" by FBOC Club, 148 Pages, 67 Color Pages, with Rarity Guide, \$20.00 plus \$3.85 priority mail shipping (US Only). Lyle Moreland, 864 Jeanette Ave, Baltimore MD 21222

**Just For Openers  
"Auction Guidelines"**

**Please Note: Fee of 20%  
Charged on Consignments**

This auction is a service to members of JFO. Submit consignments by sending a graded inventory list. Reasonable minimum bids can be established for good items. Any openers submitted for the auction should have a minimum value of \$3.00. Money realized will be sent 4 to 5 weeks after closing date.

**Write/E-Mail First Before  
Sending Consignment Items.**

**When Bidding Please!  
list Lot Number & Description  
with each bid.  
Remember! enter your name on  
each auction page &  
keep a copy.**

**MAIL/E-MAIL BID SHEETS  
EARLY! DO NOT WAIT!!!**

**AUCTION BID GUIDELINES**

Send Bids To: John Stanley  
PO Box 64 Chapel Hill NC 27514  
*Auction Rules*

*(Note: No Phone Bidding)*

- 1) \$1.00 Minimum Bid on Each Lot, Only 1 Bid per Lot Allowed
- 2) Openers Sold to Highest Bidder (Identical Bids: Earliest Post-

- marked Bid Wins)
- 3) 7 Days to Return Openers if Not Satisfied, Shipping and Handling Extra
  - 4) Openers Shipped Upon Payment (Please Pay within 7 Days of receiving Invoice) (Please make checks payable to: John Stanley)
  - 5) Results Shown Next JFO Issue (Winning Bidders receive Results with Invoice)

Grading (G):

1-Poor 2-Fair 4-Good 6-Very Good 8-Excellent 9/10-Near Mint to Mint

(UL-Unlisted in Latest Handbook (Full Wording Will Be Given) 999-Non USA Beer)

JFO # & Key Words (Brewery or Beer Name from Full Description) from Latest Handbook of United States Beer Advertising Openers and Corkscrews

**Results of JFO Auction Closing December 6, 2006 Thanks to all 33 Bidders**

1	25.00	63	2.05	124	1.01	186	0.92	248	1.01	310	3.05
2	52.00	64	1.00	125	0.92	187	0.92	249	1.01	311	5.50
3	55.50	65	5.67	126	0.92	188	0.92	250	1.01	312	20.00
4	44.00	66	2.05	127	1.01	189	0.92	251	0.92	313	6.51
5	21.01	67	20.00	128	1.01	190	0.92	252	0.92	314	6.51
6	24.50	68	0.00	129	1.01	191	0.92	253	0.92	315	7.01
7	21.01	69	3.00	130	0.92	192	0.92	254	1.01	316	5.51
8	21.01	70	5.00	131	0.92	193	0.92	255	11.00	317	9.01
9	21.01	71	0.92	132	0.92	194	0.92	256	0.92	318	0.92
10	21.01	72	0.92	133	8.20	195	0.92	257	7.50	319	0.92
11	21.01	73	0.92	134	7.80	196	0.92	258	0.92	320	0.92
12	11.01	74	0.92	135	6.90	197	0.92	259	0.92	321	4.25
13	76.06	75	3.16	136	23.00	198	3.11	260	0.92	322	8.77
14	55.00	76	0.92	137	21.76	199	3.11	261	0.92	323	6.07
15	4.01	77	0.92	138	5.00	200	0.92	262	7.50	324	14.77
16	4.01	78	0.92	139	5.03	201	0.92	263	4.00	325	10.00
17	3.66	79	0.92	140	0.92	202	18.00	264	1.01	326	10.00
18	4.01	80	0.92	141	1.00	203	0.92	265	4.00	327	33.77 (N-
19	6.55	81	1.77	142	7.80	204	0.92	266	3.16	105-1 not N-107-1)	
20	4.01	82	3.50	143	9.05	205	0.92	267	1.01	328	27.77
21	41.00	83	0.92	144	3.77	206	0.92	268	1.01	329	0.92
22	38.50	84	3.00	145	0.92	207	5.61	269	0.92	330	3.56
23	0.92	85	5.00	146	2.55	208	0.92	270	7.00	331	3.01
24	0.92	86	0.92	147	0.92	209	0.92	271	0.92	332	2.51
25	15.26	87	1.77	148	2.55	210	0.92	272	0.92	333	3.56
26	25.50	88	1.77	149	0.92	211	0.92	273	11.78	334	5.00
27	52.02	89	5.00	150	0.92	212	5.75	274	1.01	335	2.00
28	4.51	90	6.00	151	0.92	213	2.25	275	1.01	336	20.00
29	10.55	91	6.00	152	7.80	214	15.50	276	3.30	337	20.00
30	65.00	92	0.92	153	0.92	215	0.92	277	1.01	338	0.92
31	143.03	93	3.77	154	4.79	216	0.92	278	0.92		
32	105.00	94	3.68	155	0.92	217	2.10	279	3.00		
33	243.03	95	3.16	156	0.92	218	4.30	280	6.37		
34	404.04	96	6.01	157	0.92	219	5.00	281	1.00		
35	107.00	97	5.25	158	4.00	220	22.00	282	0.92		
36	41.01	98	5.25	159	0.92	221	12.51	283	3.56		
37	55.50	99	0.92	160	2.00	222	0.92	284	1.00		
38	6.00	100	0.92	161	0.92	223	0.92	285	20.00		
39	9.80	101	0.92	162	0.92	224	5.00	286	5.11		
40	9.00	102	0.92	163	0.92	225	3.10	287	3.87		
41	15.00	103	3.68	164	0.92	226	3.00	288	0.92		
42	21.05	104	3.68	165	0.92	227	5.00	289	3.87		
43	10.11	105	0.92	166	7.80	228	7.02	290	5.01		
44	20.00	106	8.00	167	0.92	229	0.92	291	3.87		
45	22.50	107	0.92	168	0.92	230	3.50	292	3.87		
46	8.00	108	0.92	169	0.92	231	0.92	293	4.00		
47	22.00	109	0.92	170	0.92	232	0.92	294	1.66		
48	21.05	110	5.68	171	0.92	233	0.00	295	4.88		
49	20.50	111	3.00	172	0.92	234	5.01	296	1.00		
50	20.00	112	8.55 (D-2-6	173	0.92	235	3.00	297	1.56		
51	21.05	not D-6-2)		174	0.92	236	3.00	298	10.04		
52	21.05	113	0.92	175	0.92	237	5.01	299	6.30		
53 Tie	6.00	114	15.50	176	0.92	238	5.02	300	5.00		
54	6.01	115	0.92	177	2.00	239	5.03	301	7.00		
55	5.16	116	0.92	178	7.80	240	3.00	302	2.00		
56	10.00	117	0.92	179	0.92	241	0.92	303	0.92		
57	5.78	118	0.92	180	5.00	242	1.01	304	6.01		
58	5.78	119	0.92	181	0.92	243	0.92	305	0.92		
59	3.56	120	4.15	182	0.92	244	1.01	306	3.00		
60	3.56	121	0.92	183	0.92	245	0.92	307	2.00		
61	2.05	122	0.92	184	0.92	246	0.92	308	2.00		
62	2.05	123	4.16	185	0.92	247	1.01	309	3.05		

If anyone has some good openers they would like to run through the JFO Auction please let me know. After the April Auction I will be running short of material. I am looking for "A"s, "B"s and "E"s especially. Interested parties please contact me or bring them to Harrisburg and I can pick them up without having to deal with shipping.

JFO Auction Closing February 28, 2007: Name & #:

#,Bid Amt,JFO #,Description,State,Grade	SHOP / SAME,WA,10	100,_____,C-018-009,Rolling Rock,PA,6
1,_____,A-001-008,Globe,CA,6	42,_____,B-019-166,Hamms,MN,8	101,_____,C-018-010,Simon,NY,8
2,_____,A-004-028,Hoster-Columbus Min \$50,OH,6	43,_____,B-019-169,Lima,OH,10	102,_____,C-018-011,Trommers,NY,8
3,_____,A-004-035,K K Beer Min \$50,OH,6	44,_____,B-019-213,Lima Min \$20,OH,8	103,_____,C-018-014,Croft,MA,6
4,_____,A-004-046,Yakima Min \$60,WA,6	45,_____,B-021-216,Valley Brew Min \$30,CA,10	104,_____,C-018-017,Trommers,NY,8
5,_____,A-005-065,DARES ALES (Foreign),,10	46,_____,B-021-243,Excelsior,OH,10	105,_____,C-019-007,Rochester Var B,NY,10
6,_____,A-006-001,West End ,NY,6	47,_____,B-021-248,Gipps,IL,6	106,_____,C-042-001,Busch,MO,10
7,_____,A-009-999,BARTIE'S OLD GORY CAFE, FREDERICK,MD,6	48,_____,B-021-320,Yuengling \$30,PA,8	107,_____,C-048-001,Harpoon,MA,10
8,_____,A-009-999,Dix Café Hagers-town,MD,6	49,_____,B-021-333,Steinle / Delphos \$30,OH,10	108,_____,C-061-001,Big Sky,MT,10
9,_____,A-009-999,Trey Blue Ribbon Whiskey, Roger Fay Co New Bedford,MA,4	50,_____,B-021-417,Consumers \$30,OH,10	109,_____,D-002-006,Schlitz,WI,4
10,_____,A-011-001,Drink Wooden Shoe Beer Min \$150,OH,6	51,_____,B-021-430,Old Colony \$20,MA,6	110,_____,D-002-010,Perfection,PA,6
11,_____,A-012-014,Green Bay Min \$25,WI,10	52,_____,B-021-433,Steinle / Export \$30,OH,10	111,_____,D-009-008,Oshkosh,WI,4
12,_____,A-015-008,Fortune Bros Min \$40,IL,6	53,_____,B-021-444,Hastings ,NE,6	112,_____,D-009-011,Zoller,IA,6
13,_____,A-015-013,Terre Haute Min \$25,IN,6	54,_____,B-021-519,Golden West \$30,CA,10	113,_____,E-002-007,Hornung,PA,6
14,_____,A-021-005,Duquesne,PA,8	55,_____,B-021-581,Stueben \$30,OH,10	114,_____,E-002-010,Scheidt,PA,8
15,_____,A-021-035,West Virginia,WV,8	56,_____,B-022-101,Atlas,IL,4	115,_____,E-002-016,Primo,,6
16,_____,A-023-999,EAGLE BAR BUX-TON,ND,10	57,_____,B-022-141,Gold Bond,OH,4	116,_____,E-002-017,Progress,OK,6
17,_____,A-023-999,Linnell & Moe Recreation Finley,ND,10	58,_____,B-024-017,Griesedieck Bros,MO,10	117,_____,E-003-008,Greisedieck(Dipped Top),MO,6
18,_____,A-023-999,Mt. Davidson Cleaners S F (No Rib),CA,10	59,_____,B-026-003,Spokane \$50,WA,4	118,_____,E-003-008,Greisedieck(Squared Top),MO,6
19,_____,A-023-999,Neighborhood Tav. Logansport,IN,10	60,_____,C-012-001,A B C,CA,6	119,_____,E-003-011,Hoosier,IN,6
20,_____,A-023-999,PEOPLES FURNITURE OAKLAND 3 (NO RIB),CA,10	61,_____,C-012-003,Camden,NJ,8	120,_____,E-003-013,Kamms,IN,6
21,_____,A-023-999,RAY GRISWOLD MOTOR FT. WORTH (NO RIB),TX,10	62,_____,C-012-007,Fort Pitt,PA,8	121,_____,E-003-017,Siouxs City,IA,4
22,_____,A-023-999,KAISER & FRAZER NEWPORT NEWS,VA,10	63,_____,C-012-008,Fort Pitt,PA,4	122,_____,E-003-020,Standard,PA,6
23,_____,A-042-016,Port Washington Min \$80,WI,10	64,_____,C-012-010,Genesee,NY,6	123,_____,E-003-021,Standard,PA,6
24,_____,A-043-002,Waldorf Malt Min \$75,MT,8	65,_____,C-012-011,Goebel,MI,6	124,_____,E-004-049,Independent Milwaukee,IL,6
25,_____,A-063-001,Anchor Steam,CA,10	66,_____,C-012-017,Neuweiler,PA,8	125,_____,E-004-053,Lang,NY,6
26,_____,A-075-002,Coors Light ,CO,10	67,_____,C-012-020,Old Stock,PA,6	126,_____,E-004-055,Lion,NY,4
27,_____,B-002-006,Hamms Min \$30,MN,6	68,_____,C-012-021,Piels,NY,6	127,_____,E-004-071,Rainier,CA,4
28,_____,B-002-999,J K Aldrich 1098 Brook Ave New York Bottle Openers,NY,4	69,_____,C-012-022,R & H,NY,6	128,_____,E-004-129,Pabst,MO,6
29,_____,B-005-026,Republic Min \$60,WA,6	70,_____,C-013-002,Bartels,NY,4	129,_____,E-004-144,Schorr-Kolkschneider,MO,6
30,_____,B-006-008,Scheidt Min \$40,PA,6	71,_____,C-013-007,Breidt,NJ,8	130,_____,E-004-163,Deer Park,NY,4
31,_____,B-006-999,Ed Hahn, Chicago / Catalog Free Novelties-Notions, Etc. Carnival Goods.,IL,10	72,_____,C-013-018,Cream City,WI,6	131,_____,E-004-199,Trommers,NY,6
32,_____,B-007-999,F J Kruse La Moure,ND,8	73,_____,C-013-019,Detroit,MI,6	132,_____,E-004-999,Norka Bever-ages,OH,4
33,_____,B-007-999,SPRINGER'S CAFE KEYSER,WV,6	74,_____,C-013-021,Dobler,OH,8	133,_____,E-005-031,Storz,NE,6
34,_____,B-009-999,J F Obrecht & Co's Caton Cigar ,6	75,_____,C-013-022,Dobler,OH,8	134,_____,E-005-067,Storz,NE,8
35,_____,B-015-002,Zang Min \$25,CO,10	76,_____,C-013-025,Duquesne,PA,8	135,_____,E-005-074,Coors,KS,8
36,_____,B-015-004,Huebner Min \$25,OH,8	77,_____,C-013-027,Ebling,NY,6	136,_____,E-006-020,Eastside,CA,6
37,_____,B-015-018,Emral Min \$30,IN,6	78,_____,C-013-029,Eldridge,NH,8	137,_____,E-006-032,Horton,NY,6
38,_____,B-015-999,Triumph Cappers,,8	79,_____,C-013-030,F & S,PA,6	138,_____,E-006-035,Krueger,NJ,4
39,_____,B-016-003,German Min \$30,MD,6	80,_____,C-013-032,Falls City,KY,4	139,_____,E-006-051,Sunshine,PA,6
40,_____,B-018-107,Hamms,MN,4	81,_____,C-013-033,Falls City,KY,6	140,_____,E-006-068,ColumbiaVar A,MO,6
41,_____,B-018-UL,WALLA WALLA MALT	82,_____,C-013-034,Fecker,IN,6	141,_____,E-006-068,ColumbiaVar B,MO,6
	83,_____,C-013-040,Fort Pitt,PA,10	142,_____,E-006-078,Lucky Lager,CA,6
	84,_____,C-013-060,Iron City,PA,6	143,_____,E-006-086,Renner,OH,4
	85,_____,C-013-061,Jones,NH,8	144,_____,E-006-105,Goetz,MO,6
	86,_____,C-013-062,K B,IL,6	145,_____,E-007-007,Goetz,MO,6
	87,_____,C-013-065,Koerber,OH,4	146,_____,E-007-010,Prima,IL,6
	88,_____,C-013-066,Krueger,NJ,8	147,_____,E-007-026,Falstaff,MO,6
	89,_____,C-013-073,Muessel,IN,6	148,_____,E-009-001,Budweiser,MO,6
	90,_____,C-013-076,North American,NY,6	149,_____,E-009-002,Budweiser ,MO,4
	91,_____,C-013-109,Stanton,NY,6	150,_____,E-009-028,Eastside,CA,6
	92,_____,C-013-115,Von Min \$20,MI,6	151,_____,E-009-043,Ruhstaller,CA,6
	93,_____,C-013-272,Mausner,IN,6	152,_____,E-013-009,Hamms,MN,8
	94,_____,C-017-999,Hotel Cleveland,OH,8	153,_____,E-013-036,Hazleton,PA,4
	95,_____,C-018-004,Independent Milwaukee,WI,6	154,_____,E-014-046,Columbia (Copper),MO,6
	96,_____,C-018-005,Iroquois,NY,8	155,_____,E-014-056,Dallas-Fort Worth,TX,6
	97,_____,C-018-006,Knickerbocker,NY,6	156,_____,E-014-057,Dawsons,MA,6
	98,_____,C-018-007,Metz,NE,8	157,_____,E-014-059,Dick Bros,IL,6
	99,_____,C-018-008,R & H,NY,4	158,_____,E-014-063,Duquesne,PA,6
		159,_____,E-014-069,Eastside,CA,6
		160,_____,E-014-071,Edelweiss,IL,8
		161,_____,E-014-081,Falstaff,MO,6



JFO Auction Closing February 28, 2007: Name & #:

2, _____, E-014-084, Fehrs, KY, 6	_____ dusky Min \$25, OH, 6	_____ Var A, IL, 4
163, _____, E-014-088, Figtgers, MN, 8	226, _____, F-027-006, Rogue Min \$40, OR, 8	282, _____, M-003-008, Edelweiss Black Var B, IL, 8
164, _____, E-014-090, Figtgers, MN, 8	227, _____, G-002-004, Hampden, MA, 6	283, _____, M-003-008, Edelweiss Green Var B, IL, 8
165, _____, E-014-091, Fleckenstein, MN, 6	228, _____, G-002-005, Harvard, MA, 6	284, _____, M-004-002, Blatz, WI, 4
166, _____, E-014-101, Genesee, NY, 6	229, _____, G-003-008, Schneider, CO, 6	285, _____, M-010-001, Ballantine, NJ, 4
167, _____, E-014-102, Gettelman, WI, 8	230, _____, G-005-999, Sealtite Stopper Machine Co. 115 Maiden Lane New York Best Crowns Crowners and Openers, NY, 6	286, _____, M-011-001, Ballantine, NJ, 6
168, _____, E-014-105, Gibbons, PA, 6	231, _____, G-006-004, F & S, PA, 8	287, _____, M-011-002, Ballantine, NJ, 10
169, _____, E-014-107, Gluek, MN, 6	232, _____, G-008-004, Dawsons, MA, 6	288, _____, M-012-001, Ballantine, NJ, 8
170, _____, E-014-109, Goetz, MO, 4	233, _____, G-008-007, Weed Willy, WI, 8	289, _____, M-012-002, Ballantine, NJ, 6
171, _____, E-014-110, Goetz, MO, 6	234, _____, G-008-009, Ruppert, NY, 8	290, _____, M-013-001, Ballantine, NJ, 4
172, _____, E-014-112, Goetz, MO, 6	235, _____, G-008-010, Standard, PA, 8	291, _____, M-039-009, Stag, MO, 6
173, _____, E-014-113, Golden Glow, CA, 8	236, _____, G-008-011, Sunshine, PA, 6	292, _____, M-042-001, Carling, OH, 6
174, _____, E-014-120, Grand Prize, TX, 6	237, _____, G-008-021, Independent Milwaukee, WI, 6	293, _____, M-048-001, Bullfrog Min \$40, IL, 6
175, _____, E-014-127, Griesedieck Bros, MO, 4	238, _____, G-009-001, Becks, NY, 8	294, _____, M-056-001, Pfaffs Min \$60, MA, 8
176, _____, E-014-128, Griesedieck Bros, MO, 6	239, _____, G-009-012, Ortlieb, PA, 6	295, _____, M-086-001, Nevin-Frank Min \$40, MT, 6
177, _____, E-014-130, Haberle, NY, 6	240, _____, G-035-001, Lite, WI, 10	296, _____, M-106-001, Michelob, MO, 10
178, _____, E-014-131, Haberle, NY, 8	241, _____, G-035-007, Magnum 5.5, 10	297, _____, M-117-001, Michelob, MO, 10
179, _____, E-014-133, Hamms, MN, 6	242, _____, G-035-008, 12 Horse Long-neck, 10	298, _____, M-118-001, Widmer, OR, 10
180, _____, E-014-135, Hamm, MN, 6	243, _____, G-035-009, High Falls, 10	299, _____, M-121-001, Budweiser, MO, 10
181, _____, E-014-138, Hand, IL, 4	244, _____, G-035-012, Miller Lite, WI, 10	300, _____, N-002-001, Dixie, LA, 6
182, _____, E-014-139, Hanley, RI, 6	245, _____, G-035-013, Yuengling, PA, 10	301, _____, N-003-005, Grain Belt, MN, 6
183, _____, E-014-141, Hauenstein, MN, 8	246, _____, G-035-CAN, Carling Red Cap, CAN, 10	302, _____, N-011-002, Stoneys, PA, 6
184, _____, E-014-143, Heileman, WI, 6	247, _____, G-044-001, Red Dog, WI, 10	303, _____, N-022-003, Fox Min \$40, IL, 6
185, _____, E-014-157, Hyde Park, MO, 6	248, _____, G-072-001, Budweiser, MO, 10	304, _____, N-030-001, Black Label, OH, 8
186, _____, E-014-184, Metz, NE, 2	249, _____, G-072-002, Bud Light, MO, 10	305, _____, N-056-001, Miller, WI, 10
187, _____, E-014-187, Miller, WI, 6	250, _____, G-086-001, Stevens Point, WI, 10	306, _____, N-065-001, Budweiser, MO, 10
188, _____, E-014-188, Miller, WI, 6	251, _____, H-006-005, Pabst, WI, 8	307, _____, N-065-002, Lite, WI, 10
189, _____, E-014-193, Muehlebach, MO, 8	252, _____, H-006-010, Blatz, WI, 10	308, _____, N-065-004, Miller, WI, 10
190, _____, E-014-194, Narragansett, RI, 6	253, _____, H-006-011, Olympia, WA, 10	309, _____, P-019-999, Quinn's Café 6 State Street Auburn, NY, 8
191, _____, E-014-197, Northern, WI, 6	254, _____, H-006-012, Pabst, WI, 8	310, _____, P-124-001, Horlacher Min \$40, PA, 6
192, _____, E-014-208, Olympia, WA, 10	255, _____, H-006-013, Olympia, WA, 8	311, _____, Q-012-001, Bud Light, MO, 10
193, _____, E-014-214, Peerless, WI, 6	256, _____, H-006-014, Pabst, WI, 8	312, _____, Q-012-003, Budweiser, MO, 10
194, _____, E-014-220, Pickwick, MA, 6	257, _____, H-006-015, Grenzquell, WA, 8	313, _____, Q-012-006, Michelob (w/ Arrows), MO, 10
195, _____, E-014-225, Potosi, WI, 6	258, _____, H-008-011, Pabst, WI, 6	314, _____, Q-012-008, Coors, CO, 10
196, _____, E-014-260, Schmidt, MN, 6	259, _____, H-008-015, Schlitz, WI, 8	315, _____, Q-012-011, Busch, MO, 10
197, _____, E-014-264, Schmidt, PA, 8	260, _____, H-010-CAN, "BUD" WESTERN CANADA BREWING CO. LTD. Min \$25, CAN, 6	316, _____, Q-012-012, Coors Light (on Blue), CO, 10
198, _____, E-014-265, Schutz & Hilgers Min \$25, MN, 8	261, _____, H-010-CAN, ADANAC BEER - BOTH GOOD - ADANAC "OLD" ALE Min \$25, CAN, 8	317, _____, Q-012-016, Miller, WI, 10
199, _____, E-014-332, Anheuser-Busch, MO, 6	262, _____, H-010-CAN, AMERICAN BREWING CO. LTD. AMERICAN STYLE RICE BEER Min \$25, CAN, 8	318, _____, Q-012-027, Carlsberg, 10
200, _____, E-014-333, Budweiser, MO, 10	263, _____, I-007-999, Lubricate with Penn Bond and Blue Seal, PA, 10	319, _____, Q-012-036, Miller, WI, 10
201, _____, E-014-347, Diehl, OH, 4	264, _____, I-019-009, Pabst, WI, 10	320, _____, Q-012-038, Coors, CO, 10
202, _____, E-014-356, Falstaff, MO, 10	265, _____, I-019-014, Pabst, WI, 10	321, _____, Q-012-043, Frankenmuth, MI, 10
203, _____, E-014-357, Falstaff, MO, 6	266, _____, I-019-018, Goetz, MO, 8	322, _____, Q-012-044, Leinenkugel, WI, 10
204, _____, E-014-377, Hamms, MN, 6	267, _____, I-020-001, Adler Brau, WI, 8	323, _____, Q-012-048, Budweiser, MO, 10
205, _____, E-014-391, Kiewel, MN, 6	268, _____, I-020-006, Hamms Var A, MN, 8	324, _____, Q-012-051, Coors, WI, 10
206, _____, E-014-418, Oshkosh, WI, 4	269, _____, I-020-019, Pearl, TX, 10	325, _____, Q-012-052, Green Bay, WI, 8
207, _____, E-014-419, Pearl, TX, 8	270, _____, I-022-005, E & B, MI, 8	326, _____, Q-012-053, Zima, 10
208, _____, E-014-493, Falstaff, MO, 4	271, _____, I-022-006, Erin Brew, OH, 6	327, _____, Q-012-063, Capital, WI, 10
209, _____, E-014-514, Hyde Park, MO, 6	272, _____, I-022-018, Tavern Pale, IL, 6	328, _____, Q-012-UL, Brick Premium Lager (W on R), 10
210, _____, E-014-529, Ortlieb Var B, PA, 6	273, _____, I-027-002, Great Falls, MT, 10	329, _____, Q-015-002, Busch, MO, 8
211, _____, E-014-555, Stag, MO, 10	274, _____, J-007-002, Coors, CO, 8	330, _____, Q-018-001, Budweiser, MO, 8
212, _____, E-014-557, Stag, MO, 6	275, _____, J-008-002, Duquesne, PA, 6	331, _____, Q-018-173, Lite, MO, 10
213, _____, E-014-589, Budweiser, MO, 10	276, _____, J-008-003, Fox Head, WI, 8	332, _____, Q-018-999, Coca-Cola, GA, 10
214, _____, E-014-601, Falstaff, MO, 6	277, _____, J-009-001, Coors, CO, 8	333, _____, Q-045-003, Michelob, MO, 10
215, _____, E-014-612, Gunther, MD, 8	278, _____, J-011-001, Schlitz, WI, 10	334, _____, Q-083-001, Coors Light, CO, 10
216, _____, E-014-705, Oertel, KY, 6	279, _____, L-015-001, Budweiser, MO, 10	335, _____, Q-091-001, Miller Lite, WI, 10
217, _____, E-014-741, Michelob Dry, MO, 8	280, _____, M-003-001, Beverwyck, NY, 6	336, _____, R-003-003, Iroquois, NY, 8
218, _____, E-014-745, Renner, OH, 4	281, _____, M-003-005, Edelweiss Yellow	337, _____, R-015-001, Budweiser (MIB), MO, 10
219, _____, E-014-748, Busch, MO, 8		338, _____, Z-999-ZZZ, Bid for Lots Receiving No Bids (< 1.00) (Excludes Min Lots)
220, _____, E-014-828, Stoneys, PA, 10		
221, _____, E-014-999, Christopher Inn Columbus / Foods Beverages, OH, 6		
222, _____, E-014-999, Frostie Root Beer / Same, 6		
223, _____, E-020-001, Ortlieb, PA, 6		
224, _____, F-006-057, Wetterer, OH, 6		
225, _____, F-009-001, Cleveland & San-		

# JUST FOR OPENERS

## 29th ANNUAL CONVENTION REGISTRATION APRIL 25-29, 2007

Holiday Inn (New Cumberland PA 17070)  
I-83 & PA Turnpike Exit 242  
1-800-HOL-IDAY (National) or 1-717-774-2721 (Local)

(Rate is \$79.00 for a Single, Double or Quad)  
(Rate Good for 3 Days Before and 3 Days After Convention)  
(Hotel Cutoff Date is March 25th 2007)

(Tell them you are with the **Just For Openers Group**)  
MAKE HARRISBURG YOUR NEXT STOP ON THE JFO CONVENTION TRAIL

MEMBER REGISTRATION FEE - **\$40.00**  
(MEMBER INCLUDES HOSPITALITY ROOM, CONVENTION OPENER & 1 SHOW TABLE)  
SPOUSE/PARTNER - **\$10.00 (Total Member & Spouse/Partner \$50)**  
(SPOUSE/PARTNER INCLUDES USE OF HOSPITALITY ROOM) (NOTE:CHILDREN ARE FREE)

NAME/(SPOUSE/PARTNER) \_\_\_\_\_

ADDRESS \_\_\_\_\_

CITY \_\_\_\_\_ STATE(PROVINCE) \_\_\_\_\_ ZIP \_\_\_\_\_

EVENING PHONE NUMBER \_\_\_\_\_

DATE YOU WILL ARRIVE \_\_\_\_\_ APPROXIMATE TIME \_\_\_\_\_

DATE & TIME YOU WILL LEAVE \_\_\_\_\_ (NEED FOR PLANNING PURPOSES)

HOW WILL YOU ARRIVE? CAR \_\_\_\_\_ PLANE \_\_\_\_\_ TRAIN \_\_\_\_\_ OTHER \_\_\_\_\_

IF PLANE? AIRLINE \_\_\_\_\_ FLIGHT # \_\_\_\_\_ ETA \_\_\_\_\_

NAME(S) FOR CONVENTION BADGE(S): \_\_\_\_\_

HOSPITALITY ROOM DRINK Brands: Beer: \_\_\_\_\_ Soda/Water: \_\_\_\_\_

MAKE CHECKS PAYABLE TO John Stanley, Send Checks to:  
JFO 29 PO Box 64 Chapel Hill NC 27514  
Phone (919) 419-1546

**\*\*\*\*\* BRING A DISPLAYS !!!\*\*\*\*\***

“29th Just For Openers Convention Registration (Page 2)”

# Convention Wish List

List up to 10 Openers/Corkscrews,  
Send in with Registration Form,  
A master list will be in the April JFO

01) _____	06) _____
02) _____	07) _____
03) _____	08) _____
04) _____	09) _____
05) _____	10) _____

Come to the 29<sup>th</sup> JFO  
Where Members Never Seem to Grow Old

They Have Become Close Friends Through the Years  
And When They Reunite There's Plenty of Cheers

They Know the Openers You Collect  
On That You Can Always Bet

They Bring Those Openers of Which You Dream  
And Give You a Good Deal So it Seems

New Attendees are Always Surprised  
At How Quickly They Become One of the Guys

That Doesn't Exclude Female Collectors  
They Add a Positive Vector

Hope You are Working on Your Display  
So it Will Be Ready for the Big Day

Pat, John, Jazzy & Snazzy Will Be in the Hospitality Room  
Without You the Convention Will Be Doomed

Harrisburg Here We Come  
Ready for Lots of Fun