

Just For Openers Oct 2009 Issue #124

Copyright 2009

John Stanley
PO Box 64 Chapel Hill NC 27514-0064
(919) 824-3046
Web Site: www.just-for-openers.org

Past Editors

Don Bull (1979-83)
Ed Kaye (1984-88)
Art Santen (1989-1993)

Annual Dues \$20.00 or
View Free on the Web Site
Use PayPal at jfo@mindspring.com
Renewal Due Date: 12/31/2009
Opener & Corkscrew Books
(Details in Want & Sale Ads)

JFO



A-19-2 Lone Star "Alligator" Figural



A-19-2 Lone Star Brewing "alligator figural". This style is very hard to find with beer advertising as only four different U. S. beer brands are known. It must have been a popular design with the Lone Star Brewing Co. as they have two of the four U. S. beer ones. The one above advertises "Santone" beer and the other "Alamo" beer. These were Lone Star's two major brands before prohibition. The style is not too hard to find with a cigar ad and over the years I have seen 12-15 A-19s with cigar advertising. Jack Ford has told me he does not believe the figural is really an alligator shape. It does not have a tail and just maybe it is a "cigar type" figural of some kind. Any ideas?

This will be the Last Mass Printed JFO Issue

Starting in January the Newsletter will officially be viewed "free" via the JFO Web Site. Please note the Newsletter will be "FREE" using this option. Anyone and everyone will have free access. Please send me an email if you want to use this option.

BUT, if you still want a printed version just send in your \$20 dues and I will continue to mail an issue to you. Future issues will be smaller and probably every other month instead of each quarter.

2010 JFO Convention #32 April 14-18 San Antonio TX

The convention registration is at the end of this issue. San Antonio is a wonderful city to visit in the spring so please make plans to attend (at least reserve a hotel room as you can always cancel the room). One big change with this convention is we will have our Saturday Show in conjunction with the local Lone Star Beer Chapter Club. They have a spring show each year in Shiner, Tx. and this coming April we will be joining them to set up at their show (9AM to 2PM). It is an outdoor show in a park area that is in front of the brewery. The Spoetzl Brewery dates to 1909 and is worth the trip just to see it. JFO is renting a bus to make the two and a quarter hours drive to Shiner. The plan is to leave the hotel by 7 or 7:15 for the trip over. Set up when we arrive and tents will be provided if it is raining. This year 35 local collectors setup at the show with 150-200 walk-ins. Chapter members have promised a fun time for all attending. Tables and transportation are included in the registration fee (same as previous years). Make San Antonio in 2010!

JFO Loses Two Giants of Opener Collecting



Ollie Hibbler (left) died August 3rd at the age of 78 from heart complications. He is shown with his last "great find" from the ABA show in June. He is survived by his wife Shirley and three children.

Art Johnson (right) passed away on October 10th just hours short of his 84th birthday. Art had been dealing with health issues for a couple of years and in the end too many things failed. He is survived by three sons.

More on Ollie and Art on the next two pages.



Ollie Hibbeler

You know I can't remember the first convention I met Ollie. At that time in the late 80s Shirley and he were the life of any JFO Convention. Ollie made you feel at ease and like he had known you for years. Always sharing information and always wanting to know if you had any "Missoura" openers. Shirley conned me into a poker game and I am sure took some of my money.

They attended just about every JFO Convention since I have been going (for some reason Shirley is not fond of San Francisco). If you ever wanted someone to be your "ace recruiter" for JFO, it was Ollie. Just down to earth and very sincere. He made first time Convention attendees feel they were very special. For years when the Saturday Convention Show started, Ollie was the first one setting up and always telling the walk-ins about JFO.

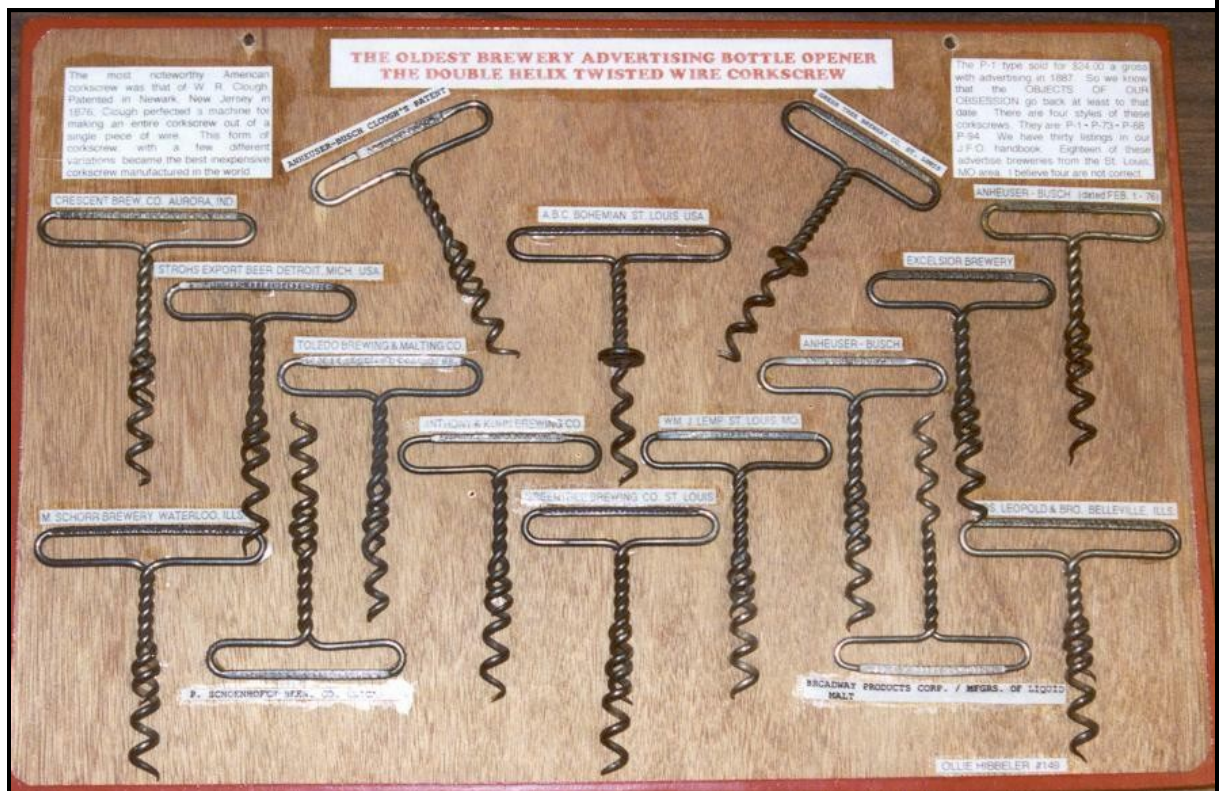
When Pat and I finally made it to the Hibbeler's "Ozark Lakeside Mansion" in 2003, I could always see why he loved living by the lake. It was getting really crowded with lake traffic but his "junk room" above the garage was very special. Over the years we made a few trades as Ollie's favorite opener was the "wire beer corkscrews". His collection will never be duplicated and out of about 30 known U. S. beer adverting wire corkscrews, he had a collection of 20 (16 shown below). In fact in 2003 I remember him telling me he was not going to pay much for any regular beer openers but he would still chase hard after a wire corkscrew piece.

We stayed at the Hibbelers new O'Fallon home on the way to JFO in 2005. His new "junk room" in the basement of their villa was a true museum for openers, Indian artifacts and beer fishing advertising items. Unfortunately I kept saying we would visit again as time went by but we never did. Our monthly phone conversations covered a lot of topics besides openers. Ollie had since 1994 been my "ace cub reporter" for beer shows I did not attend but he was at and he always would send me a write-up with pictures. (His last one about the 2009 ABA Convention appears in this issue).

My major surgery which was just before the 2008 JFO Convention made it tough for me to do anything and it was Ollie who came through (along with Shirley) to make it another great JFO Convention. He seemed to be everywhere but maybe it was because I had a hard time moving anywhere.

Shirley and he were together 58 years and losing someone unexpectedly is so so tough. He was a one of kind individual who everyone

loved. Pat and I thought Ollie was the greatest, a true gentleman, a great person in general and a friend to anyone and everyone he ever met. The world was a much better place with Ollie and anyone who knew him, knew he was very special! Thank you member #149, you will not be forgotten!



Art Johnson

The Stanley's hosted two JFO Conventions in the Durham area in 1990 and 1991. Even then Art was by Eileen's side taking care of her. She enjoyed the hunt as much as he did. Art told me then that he wanted to concentrate on "Slider" openers. The early nineties saw prices for "sliders" bottom out and looking back I think Art's chasing after them caused the prices to steadily increase as time went by. It is somewhat ironic that just a year ago he completed his "M-3" beer slider collection when he got the M-3-42 Seitz. He had already completed the beer "M-73" a few years before. In opener collecting it is a super collection and now cherished by his son, Wayne.

When I first got to know Art he had a good collection of "sliders" and any time I picked up a "tough one" I would let him know. Our trades were always for "sliders". Our first big "slider" trade involved a M-3-34 Ruppert in mint condition that had been in the Don Bull Collection. I traded Don out of it and at the 1996 ECBA Convention in Boston, Art drove 40 miles each way to pick me up and take me to his house. Eileen cooked me a great meal (lobster) and after supper we got down to some serious trading. He said I could pick anything I needed out of his beer opener collection except for a few special local ones. Let's just say it was a big trade.

The next year after the JFO Buffalo Convention, I traded him the M-3-39 Hialeah which Mark Barren had traded me at the convention. Soon after this eBay cranked up and once Art started buying there he continued to close in on all of the "beer sliders". We completed a few more trades but most of his "big finds" were on eBay. When he added one, he would get excited but Eileen even more so. They helped with the 1999 JFO Convention in Ft. Myers and when they would travel back to Mass for the summer and back down to Florida for the winter we would meet them in Statesville, N. C. for supper.

Eileen passed away in 2005 and Art had the good fortune of meeting Beth Peck. She helped him at the Harrisburg JFO Convention in 2007 as he sold all of his openers except for the "sliders", belt buckles and a few good New England openers. I helped him at two different Brimfield shows as he had a lot of general antiques to sell. Art was one heck of a good man, a great collector and a great friend. I will miss very much our weekly phone conversations on bottle openers, the Patriots and the Red Sox.



28th A.B.A Show/Madison, Wis. June 24th – 27th, 2009 Last Article Written by Ollie Hibbeler, #149 July 2, 2009

We arrive in Madison, Wis. just in time for the 3 o'clock check-in after a 380 mile trip. Our 11 year old Dodge van still runs like a dream. We listened to country-western music C.D.'s all the way up. We registered at the hotel and show and then went to the hospitality room. They had lots of snacks and members brought many, many different micro beers to choose from for 4 days. Members brought micros from their area of our country. I brought a six pack from the O'Fallon, Mo. Brewery. I over-did the beer Wednesday nite, but I behaved my age the rest of the week. Never too late to learn!

Went on a couple of bus trips on Thurs. and Friday, room trading, drove around Madison to see a beautiful city. Very neat and clean. When I saw the large beautiful lake that bisects the city, I was a bit homesick for our 19 years at Lake of the Ozarks. Oh well, time marches on!!

I only came up with 10 different openers and a Miller Beer sign with a background of a fishing lure. I called John Stanley after returning home to tell him that I thought I had found 2 new DISCOVERIES. He said that they were just sent in. You really have to be QUICK in this INTERNET ERA! At least I know I have them. One from MAGIC HAT BREWERY and Leinenkugel Brewery plus 8 others.

The overwhelming number of attendees were SENIOR CITIZENS. The younger ones showed up Friday evening and Saturday. This was O.K. with us as we fit the first category. After the public show Saturday, we had a micro beer swap. Then a good banquet and a short stay in the hospitality room for goodbyes and a nite-cap. What a great show for 4 days of mutual interests: Breweriana, friendships, good beer and food and some openers.

Sunday morning we left for a long trip thru Wisconsin..House on the Rocks, Green Bay, Door County, Egg Harbor, two INDIAN CASINOS, Chippewa Falls, Eau Claire, La Crosse, and a guided tour by Herb and Helen Haydock of their new BREWERIANIA display at the MINHAS Brewery in Monroe, Wis. This display is and will be something to be envied and a MUST SEE. Not very far from the A.B.A. MUSEUM in Potosi, WIS. That too is a GREAT visit!

Then down the Mississippi River to home. We had to help our oldest grandson and his wife, who will soon deliver us with our first great grandchild move into their new home in Columbia, MO. Now we can visit them and go to the Flat Branch Brew Pub & Restaurant in Columbia and I can order a PINT and an OPEN FACE BUFFALO with mashed potatoes and gravy and HOT bread.

We did stop in WARSAW, ILL at the OLD WARSAW BREWERY for a pint and supper before our last 150 miles back home to O'Fallon and our own bed. Enough said.

TWO ASSIDES: We visited four casinos just for Shirley. You understand! You have to give a little to get your way once in awhile. Shirley won once – lost 3 times. NOT BAD FOR A CHANGE!

I took 12 chances for \$10 at the show raffle. I won 5 times, so I came home with more "STUFF" than I left home with and the next breweriana show we will attend isn't until September. Can't wait. See you in San Antonio, Texas April 2010. BE THERE!

Oh how we wish you would be there Ollie!!!

You are Truly Missed

Now We will only have Ollie Stories to tell as we have a pint and reflect on your life and all you added to Just for Openers.

Art Johnson's Sliders (Previous Page)

M-3-39 Hialeah (Green) Only 1 Known

M-3-45 Scranton (Dark Red) 1 of 2 Known

M-3-44 Osterstyock (Green) Only 1 Known (Front and Back Pictures Shown: Bottom 2 Pics)

M-3-34 Ruppert (Yellow) 1 of 2 Known

M-3-27 Trommers (Red) 1 of 4 Known

M-3-42 Seitz (Orange) 1 of 2 Known and the only with Paint (The only Beer Advertising Slider painted Orange) (Front and Back Shown)

If you want to keep a reference of the rarest sliders this would be you list. I hope to one day get individual pictures of his entire collection. It is one collection that will never be duplicated.

Spouse's Corner

By Pat Stanley, the Editor's Spouse

It is just minutes away from October 18th, our 22nd Anniversary. And yes, that means the newsletter is late. Since the last newsletter, I've had two more minor foot surgeries, John spent about 21 hours in the hospital and he has attended two breweriana shows. Guess we will use all that for justification for being late!

One foot surgery was to be performed the day he was in the hospital. He had been having some vision problems on and off, but when his arm had pain shooting down it, off we went to ER about 8 PM. Initial tests all checked out ok and I finally left around 1 a.m. to care for the dogs. Next day I called to cancel my surgery since we didn't know if/when they would release John. More tests, all ok. It boiled down to probably just a pinched nerve. Looking back it started when he laid down on the sofa and he felt a pain shoot through his neck...probably when the nerve said "ouch".

My doctor changed the surgery to the last appointment of the day, just in case it worked out or it would be five weeks to reschedule. I would be able to drive afterwards, so we just waited to see what would happen. Just as the time approached where I had to decide what to do, we found out John would be released later that day. I went on to surgery and was getting dressed after the procedure when my cell phone rang. Patient was ready to leave the hospital. I was about a mile away, so picked him up on the way home, where I had to be flat for a couple of days. John was doing well enough to care for the dogs.

And to think when I sat down to compose this column, I thought, what can I write about, things have been quiet.

Well, then there's dog training. Thought it would be a good family project if we both went to class with our little Jazzy and Snazzy. After two lessons, I fired John...never going to be the dog whisperer...too soft. So I took over training, mainly focusing on taking Snazzy as she needs the most help. She figured out how to avoid school lately, she's been sick a couple of times and paid for the vet's summer vacation to get well. I will continue class after our upcoming trip to San Francisco.

When your editor and/or his family are sick, the close knit members of the JFO club stay in touch. The regulars to the annual convention stay in touch throughout the year and know when members are dealing with stressful situations.

Two members who we always talked to frequently have recently passed away.

First, it was totally unexpected to hear that Ollie Hibbeler had passed away. He had been hospitalized and was improving when suddenly he had a fatal heart attack in the hospital. We found out from Art Santen, but when we talked to Ollie's wife Shirley, she had wanted to be the one to tell us. It is a very close bond when someone feels they need to be the one to tell you as difficult as it is for them. It says they know how close you were to Ollie. He always said "You Be There" for the JFO convention. It will be very sad that he isn't in San Antonio, but we will definitely have lots of Ollie stories to tell when we gather together. When John had surgery right before the 2008 St. Louis Convention, Ollie kept reassuring us that he and Art would run the convention if John couldn't come, but he understood that we knew they could handle it, but John just wanted to "be there". So many times at JFO that year, Ollie came to my rescue keeping drinks in the coolers and iced down as I really did not have the strength to lift the weight, but tried as he did not need to be doing these things either...but he did. If memory serves me 900 people signed the guest register at the visitation for Ollie and there are many more who could only be there in spirit. We hope that Shirley will come to San Antonio. Other spouses that have come after losing their husbands include Cora Whelan and Kay Schmidt. We are always glad to have them. They didn't come for the hobby, they came for the people they have known over the years.

More recently Art Johnson passed away after being in poor health for over a year. He could not always be at JFO as he was his wife Eileen's dedicated caretaker for many years. They wintered in Florida and spent summers in Massachusetts. We would meet them in Statesville, NC as they made their journeys between the two states. Statesville is a little over two hours away, but we would meet them for supper. They couldn't come further east to our home, as they had to

Spouse's Corner (continued)

plan their trip so they could get to various stopping points along the way to pick up oxygen tanks for Eileen. We talked to them at least twice a week throughout the year. We felt like we had another set of parents which was a great thing indeed. We were also on the daily email list called Picture of the Day. Art shared many beautiful sunsets, flowers, birds and other nature pictures with us, allowing us all to take time to "smell the roses".

After Eileen passed away, Art 's Florida neighbors starting inviting him to dinner or drinks and eventually he started seeing Beth, a retired nurse. We welcomed Beth and were happy that Art was getting out to go on pleasant walks, dine with friends and have some fun. Many of you met Beth at the 2007 Convention in Harrisburg, Pa. When Art started having health issues, Beth stood by him, even spending months in Massachusetts that would normally have found them in Florida. We were grateful for her continuing friendship and her medical background, as the tables had turned and he needed a caretaker. Beth was there for him.

Art's sons took him back home as his health continued to decline. One Friday Art was calling John to ask him to send him a CD of opener pictures and the next day he became seriously ill and passed away within a week.

We never know what may come, so in 2010, "Be There" in San Antonio.

To end on a more cheerful note, Karen Hanold is doing well with her first knee surgery. She still has the other knee surgery to go, but hopefully we will see them in San Antonio.

We look forward to going to San Francisco soon-. As always we will see Jack Ford, John Cartwright and Pete Nowicki. This year Mike Krejci planned to be in San Francisco the same week as we are. See what I mean by a close knit group. A big part of the reason we like to go to San Francisco is to see some of our JFO friends. The other is the Cable Cars!! The seafood rates pretty high too!! Weather permitting Mike will join us on the annual bike ride across the Golden Gate this year. I have been riding my bike a little, but not ready for the 8 mile trip yet!

Take Care and Stay in Touch

Newsletter Content and Deadlines for Sending in Articles and Receiving Newsletter

| | January Issue | April Issue | July Issue | October Issue |
|---------------------------|----------------------------------|-----------------------------|------------------------------|------------------------|
| Newsletter Content | New Additions to Handbook | Membership Directory | Convention Highlights | New Discoveries |
| Articles | December 1st | March 1st | June 1st | September 1st |
| To Members By | January 31st | April 30th | July 31st | October 31st |

Just For Openers 2009 Membership Directory Just For Openers Current Members: 233 (New Member Numbers 1131-1131)

| # | Last Name | First | Spouse | Street | City | St | Zip | Phone | E-Mail | Opener Specialties |
|------|------------|---------|--------|-----------------------------|------------|----|------------|-------------------------------|-----------------------------|--|
| 1131 | Willis | Kenneth | | 824 E Main St | Morris | IL | 60450-2321 | 815-942-2032 | willis824@comcast.net | General (All Types) (500-600 In Collection) (JFO WWW) |
| 867 | Musick | Don | | 119 Green Acres Rd | Clovis | NM | 88101-8434 | 505-799-4929 C505-799-4929 | donmusick@31efties.com | All Openers & Corkscrews (Rejoin) |
| 1091 | L'Africain | Josef | Sue | PO Box 432 (Address Change) | Vinalhaven | ME | 04863-0432 | 207-863-2580 C617-584-4358 | josef@vintagecorkscrews.com | Corkscrews! (Syroco, American Patents, Tools w/ Corkscrews Attached) |

New Discoveries to the 2009 Handbook

**A-91 JOKER'S CAP
CAP LIFTER
MADE IN CHINA
4 1/4"
BEN HOFFMAN**

1. BUDWEISER (IN CROWN BOWTIE) BUDWEISER SELECT (CROWN LOGO) BUD LIGHT (WHITE ON YELLOW)



**A-98 FISH
CAP LIFTER
3 7/8"
BEN HOFFMAN**

1. WWW.DOGFISH.COM / OFF-CENTERED ALES

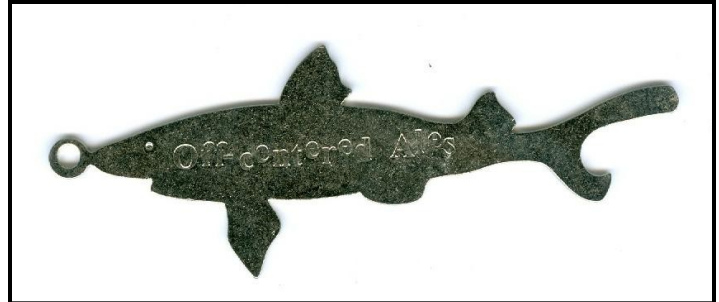
**A-93 TAP HANDLE
CAP LIFTER
7"
JOHN STANLEY**

1. BLUE MOON (LOGO) BREWING CO. / SAME (BLUE ON WHITE)



**A-92 BASKETBALL GOAL
CAP LIFTER
MADE IN CHINA
2 13/16"
ART SANTEN**

1. BUD LIGHT (LOGO) MARCH TO THE CHAMPIONSHIP (BLUE ON WHITE)



**A-94 FOOTBALL
CAP LIFTER
2 1/2"**

MIKE KREJCI

1. MILLER LITE (LOGO) / MILLER LITE (LOGO)
SUPER PARTY 2009 (BEACH ON FOOTBALL SCENE)



**A-95 BOTTLE
CAP LIFTER
6 1/2"**

JOHN STANLEY

1. SHINER BEER SHINER (SHINER IN TEXAS LOGO)

**A-96 BOWTIE
CAP LIFTER
7 1/8"**

ART SANTEN

1. BUDWEISER (IN CROWN BOWTIE)

**A-97 SHIRT
CAP LIFTER
3 3/8"**

MIKE KREJCI

1. BUDWEISER (CROWN LOGO) BEIJING 2009
(OLYMPIC LOGO)

**B-82
CAP LIFTER
2 13/16"**

DAVID HARRIGAN/MIKE KREJCI

1. BELL'S (LOGO) INSPIRED BREWING
WWW.BELLSBEER.COM DRINK RESPONSIBLY /
AMBER ALE
2. BELL'S (LOGO) INSPIRED BREWING
WWW.BELLSBEER.COM DRINK RESPONSIBLY /
OBERON ALE
3. BELL'S (LOGO) INSPIRED BREWING
WWW.BELLSBEER.COM DRINK RESPONSIBLY /
TWO HEARTED ALE
4. MILLER LITE PILSENER (LOGO) SAME



**2 of Art's M-73s #13 Heurich &
#14 Budweiser/Becker**

**B-83
CAP LIFTER
2 3/4"**

DAVID HERRIGAN

1. BELL'S (THREE BELLS LOGO) OBERON ALE



**B-85
CAP LIFTER
2 11/16"**

MIKE KREJCI

1. GEORGE KILLIAN'S IRISH RED (HORSE LOGO) PREMIUM LAGER GEORGE KILLIAN LEET EST. 1864 IN THE TRADITION OF GEORGE KILLIAN LETT ENNISCORTHY, IRELAND MANUFACTURED UNDER LICENSE FROM BRASSERIES PELFORTH S. A. / SAME

**B-86
CAP LIFTER
2 1/8"**

JOHN STANLEY

1. MILLER HIGH LIFE (WHITE ON RED & YELLOW) / MILLER HIGH LIFE LITE (WHITE ON BLUE)

**C-90
CAP LIFTER
2 9/16"**

MIKE KREJCI

1. COORS LIGHT



**B-84
CAP LIFTER
3 1/2"**

MIKE KREJCI

1. WILD ONION BREWING CO. LAKE BARRINGTON IL. (LOGO)



**C-91
CAP LIFTER
2 7/16"**

ART SANTEN

1. RAY HILL'S (ST LOUIS MICRO)

**M-73
Side
Views**



C-92
CAP LIFTER/WITH RETRACTABLE LINE
3 1/2"

MARC BENJAMIN/MIKE KREJCI/HAROLD QUEEN

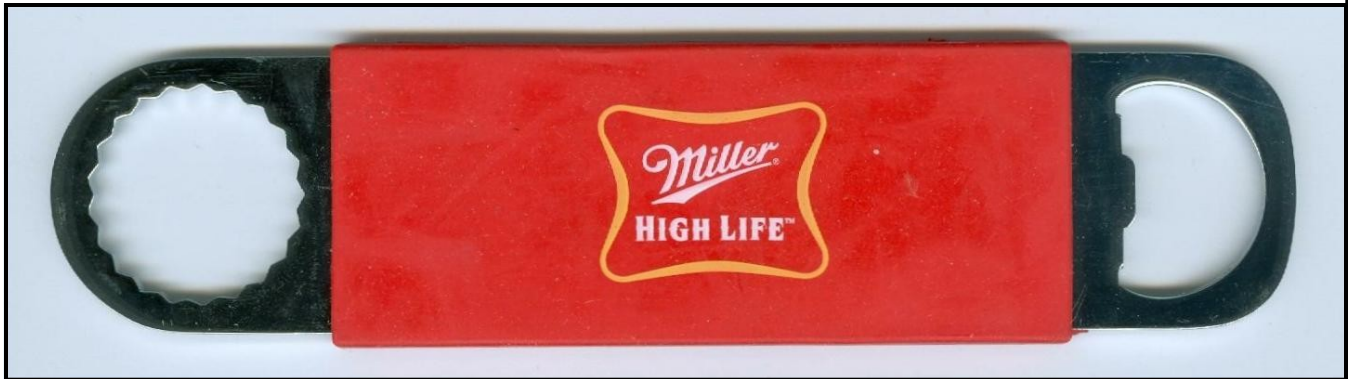
1. MILLER LITE (LOGO) MILLER LITE (LOGO ON RETRACTABLE CLIP)



C-93
CAP LIFTER/TWIST-OFF CAP REMOVER
MAGNET ON BACK
(SEE C-49)
6 3/4"

MIKE KREJCI/HAROLD QUEEN/ART SANTEN

1. COORS (SCRIPT) / SAME (WHITE ON BLUE)
2. COORS (SCRIPT) LIGHT (WHITE ON RED)
3. MILLER HIGH LIFE (LOGO) / SAME (WHITE ON RED & YELLOW)
4. MILLER LITE TM (LOGO) / SAME (RED, YELLOW & WHITE ON BLUE)



E-34
THREE FRETS/ROUND TOP
FLAT HANDLE AT BASE (SEE E-1, E-3 & E-18)
3 1/2"

LARRY MOTER

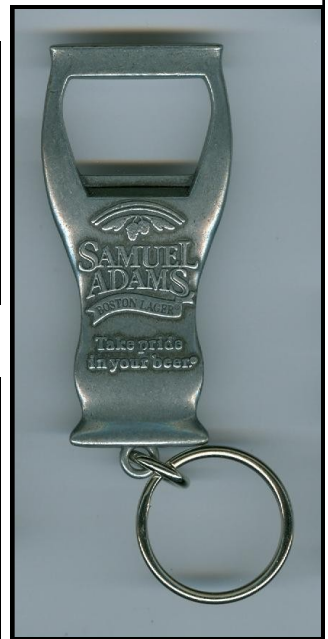
1. MOUNT CARBON LAGER BEER / SAME



G-112
CAP LIFTER/GLASS SHAPED
3"

MIKE KREJCI/JOHN STANLEY

1. SAM ADAMS BOSTON LAGER (LOGO) TAKE PRIDE IN YOUR BEER / SAME



F-40
CAP LIFTER/CAN OPENER
CUTTER/OPENER
MARKED "BOTTLE OPENER"
3 1/2"

JOHN STANLEY

1. HARRY'S MALT & HOP SHOP BOTTLE SUPPLIES PHONE DELAWARE 6607 348 W. CHICAGO AVE.



G-113
CAP LIFTER/BOTTLE SHAPE
3 1/2"
ART SANTEN

- 1. BUDWEISER (ON BODY AND NACK LABELS) / SAME



G-114
CAP LIFTER/CAR SHAPE
MAGNET ON BACK
4 1/8"
MIKE KREJCI

- 1. BUDWEISER 8 / NASCAR ANHEUSER-BUSCH, INC.
© 2007 DALE EARNHARDT JR CHINA



G-115
CAP LIFTER/GLASS SHAPE
3 5/16"
MIKE KREJCI/DARVIN STILWELL

- 1. LEINENKUGEL'S (LOGO) SUNSET WHEAT / SAME



G-116 (TO THE RIGHT)
CAP LIFTER
2 5/8"
MIKE KREJCI/JOHN STANLEY

- 1. MILLER

G-117 (BELOW AND RIGHT)
CAP LIFTER
2"
MIKE KREJCI

- 1. MILLER



G-118
CAP LIFTER
3 13/16"
MIKE KREJCI

1. MILLER LITE MONTECARLO.COM 888-529-4828
PLAYERSCLUB.COM MONTE CARLO LAS VEGAS /
MONTE CARLO RESORT & CASINO RODEO 2006



H-14

OVER THE TOP (OTT) CAP LIFTER/MILK CAN OPENER
MARKED "VAUGHAN CHICAGO PAT'D
OVER THE TOP TRADE MARK MADE IN U. S. A."
3 1/2"

- JOHN STANLEY (FROM ROY SCANLAN COLLECTION)
1. FINK BREWING CO. HARRISBURG, PA.



G-119
CAP LIFTER
2 9/16"
MIKE KREJCI/
JOHN STANLEY

1. MILLER LITE
(LOGO SHAPE)

L-21
BOTTLE SHAPED LIGHTER
(HALF OF A BOTTLE)
CAP LIFTER
INSIDE BOTTOM
MAGNET ON BACK
4 1/4"
MIKE KREJCI

1. COORS LIGHT COLD
ACTIVATED BOTTLE
(ON BODY LABEL) THE
SILVER BULLET
(MOUNTAIN LOGO) (ON
NECK LABEL)



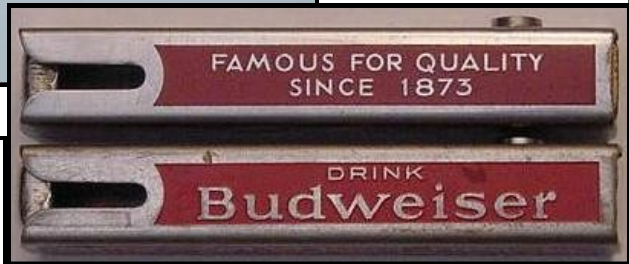
M-171
 CAP LIFTER/CAN PIERCER
 MARKED "BARRETT'S STAINLESS JAPAN"
 6 3/8"

- MIKE KREJCI
 1. BUDWEISER-GRAIN BELT VALLEY SALES CO.
 INC. JAMESTOWN, VALLEY CITY



M-172
 CAP LIFTER/
 LOOP SEAL REMOVER
 IN WOODEN SLEEVE
 (LOOKS LIKE A P-31
 BUT HAS STRAIGHT ROD)
 3 13/16"

- BILL MCKIENZIE/
 ART SANTEN
 1. COMPLIMENTS
 OF THE C. A.
 LAMMERS BOT-
 TLING CO.
 DENVER, COLO.



M-73
 Side
 Views

N-153
 BOTTLE SEALER/CAP LIFTER
 MARKED "BOTTLETOOL.COM-THE OPENER THAT CLOSSES
 WORLD PATENT PENDING"
 3"

- DAVID BELKNAP/JOHN CARTWRIGHT
 1. RACER 5 WWW.BEARREPUBLIC.COM (BLACK & RED
 ON YELLOW)

N-154
 TWO BLADE KNIFE
 CAP LIFTER MASTER BLADE/PEN BLADE
 3 1/8"

- MIKE KREJCI
 1. DISTRIBUTORS OF SCHLITZ & HEILEMAN BEERS
 KIEL BOTTLING WORKS



N-155
 LEATHERMAN TOOL
 FOUR BLADES/CAP LIFTER BLADE/
 MASTER BLADE/SAW BLADE/
 PHILLIPS SCREWDRIVER BLADE/FOLDING FLASHLIGHT/
 NEEDLENOSE PLIERS
 MARKED "CHINA STEEL" /
 (SEE M-110, M-124, M-128, M-143, M-150)
 3 1/8"
 MARC BENJAMIN/ART SANTEN
 1. BUSCH (WHITE ON BLUE)



N-158
 FOUR BLADE KNIFE
 MASTER BLADE/CAP LIFTER SCREWDRIVER BLADE/
 FILE BLADE/SCISSORS BLADE
 MARKED "STAINLESS STEEL"
 2 3/4"
 MIKE KREJCI/JOHN STANLEY
 1. THE COORS EDGE / COORS CO-OP



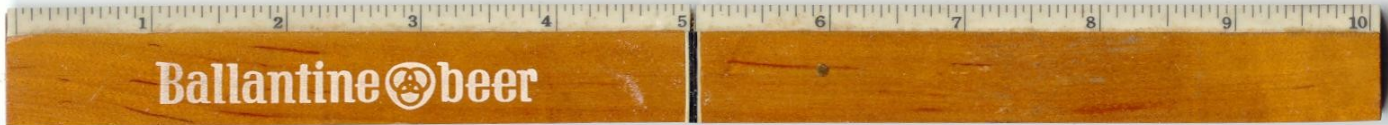
N-156
 CAP LIFTER/FLASHLIGHT
 MARKED "CHINA"
 3 3/8"
 OLLIE HIBBELER/MIKE KREJCI/DARVIN STILWELL
 1. JACOB LEINENKUGEL BREWING COMPANY (J L B C
 IN L LOGO) (BLACK ON RED)



N-160
 CAP LIFTER/
 BIKE CHAIN
 MARKED "CHINA"
 3 3/8"
 JOHN CARTWRIGHT/
 DON WILLIAMS
 1. BEAR REPUBLIC (BEAR
 LOGO) MAKE
 BEER NOT
 BOMBS (ON
 CHAIN SHI-
 MANO DURA-
 ACE / GE JA-
 PAN (ON 2
 LINKS) HG CN
 -7801 / SAME
 (ON 2
 LINKS))



N-157
 CAP LIFTER/FLASHLIGHT
 2 7/8"
 MIKE KREJCI
 1. MILLER LITE (IN LOGO) S X S W '09 (BLUE ON
 WHITE)



N-159
 FLOATING FISH KNIFE/CAP LIFTER/RULER
 MARKED "WARCO, STAINLESS STEEL, JAPAN"
 10"

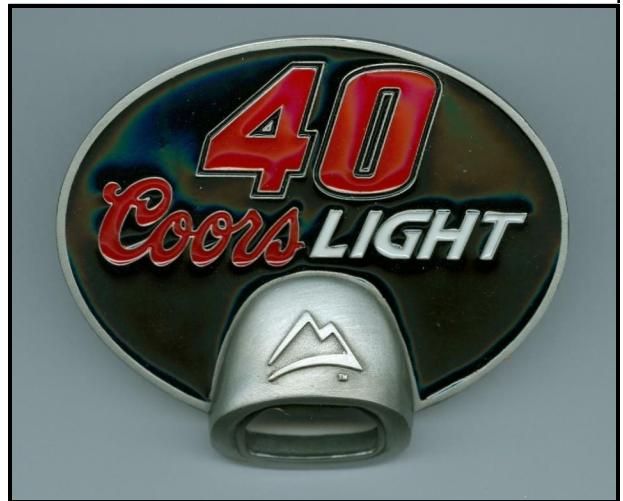
BEN HOFFMAN

1. BALLANTINE (3 RING LOGO) BEER

N-161
 TRAILER HITCH/CAP LIFTER
 MARKED "MADE IN U. S. A. PATENT PENDING
 6,260,674 6,266,292"
 4 1/2" X 3 1/2"

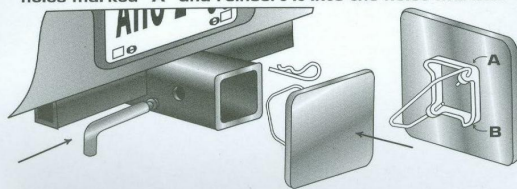
MIKE KREJCI

1. 40 COORS LIGHT (MOUNTAIL LOGO)



Directions for use

1. Orient the stainless steel wire form to go into the diagonal corners of the hitch receiver.
2. Push all the way in. The spring action eliminates rattling.
3. Secure with the original pin and clip supplied with the hitch.
4. If there is excessive play, remove the wire form from the holes marked "A" and reinsert it into the holes marked "B".



**Remember
 The Alamo
 San Antonio
 Texas**

N-162
 BELT HELD/
 CAP LIFTER
 3 3/4"
 MIKE KREJCI
 1. COORS
 LIGHT

N-163
 COCKTAIL FORK/CAP LIFTER
 6 1/2"
 TOM BALANDA/OLLIE HIBBELER
 1. MAGIC (STAR) HAT



N-164
 BALL MARKER/CAP LIFTER/HAT CLIP
 3 IN 1 HAT CLIP
 BALL MARKER HAS MAGNET ON BACK TO STICK TO OPENER
 MADE IN CHINA
 1 1/2"
 JOHN STANLEY

1. COORS LIGHT (ON MOUNTAIN LOGO)



0-28
 BIRD HOUSE
 WALL MOUNT CAP LIFTER
 8" X 3 1/2"
 JOE YOUNG

1. IT HITS THE SPOT ARROW BEER GLOBE BREW. CO. BALTO. MD.



0-29
 STEEL PLATE
 WALL MOUNT CAP LIFTER
 MARKED "B & B ST PAUL MINN., U. S. A."
 3 1/4" X 2 5/8"
 PAT STAMBAUGH

1. OUR CAPS ARE OFF TO YOU JOHN KENFIELD HAMM'S BEER DISTRIBUTOR SHAKOPEE, MINN. PHONE 7



O-29 Shown is not the Hamm's Opener but the Same Style.

P-190
WOOD HANDLE CORKSCREW
SQUARE SHANK
JOHN STANLEY

- 1. S11 F. H. B. CO. (IN QUARTER MOON LOGO)
(STAMPED IN EACH HANDLE END)



P-191
WAITER'S FRIEND/CORKSCREW/
CAP LIFTER NECKSTAND BLADE/
SERRATED WIRE BREAKER BLADE
DAVID HERRIGAN/MIKE KREJCI

- 1. BELL'S (3 BELL LOGO) KALAMAZOO, MI



Q-104
CAP LIFTER
1 1/2"
MIKE KREJCI

- 1. B L LIME (BUD LIGHT LOGO) (WHITE ON GREEN)



P-192
SIX BLADE KNIFE/CORKSCREW/ MASTER BLADE/
PEN BLADE/CAP LIFTER SCREWDRIVER BLADE/
CAP LIFTER PUNCH BLADE/WIRE BREAKER BLADE
TOOTHPICK
(SWISS ARMY KNIFE STYLE)
MIKE KREJCI

- 1. MILLER (WHITE ON RED)



Q-105
 CAP LIFTER/CAR SHAPE TOP
 (SEE Q-18 & Q-95)
 2 5/8"
 ART SANTEN

1. COORS LIGHT (PIC OF CAR) (WHITE ON BLACK)



Q-106
 TWIST-OFF CAP LIFTER
 (SEE Q-78, Q-91 & Q-99)
 2 3/4"
 MIKE KREJCI

1. MILLER (LOGO) GENUINE DRAFT (GOLD, RED, SILVER, WHITE & YELLOW ON BLACK)



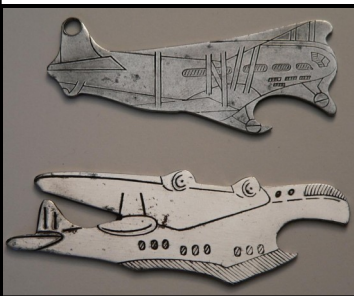
Q-107
 CAP LIFTER
 (PLASTIC OVER METAL)
 MARKED "CHINA"
 6 1/8"
 MIKE KREJCI

1. MILLER GENUINE DRAFT



Q-108
 TWIST-OFF CAP LIFTER
 (FLAT BACK)
 2 1/2"
 JOHN STANLEY

1. MILLER LITE (LOGO) (BLUE, GOLD & RED ON WHITE)

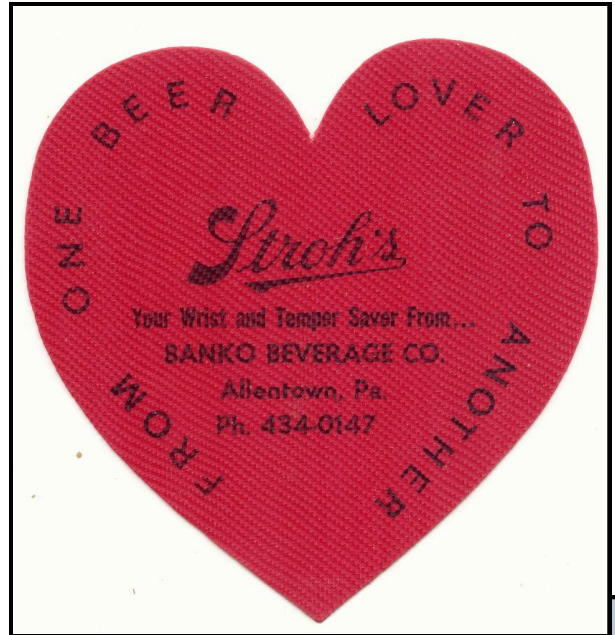


2 British Airplane Figurals



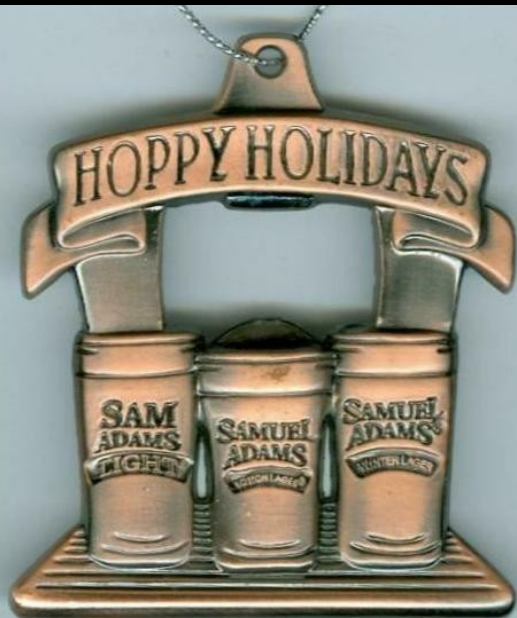
Q-109
 TWIST-OFF CAP LIFTER
 (SEE Q-9)
 5 1/4"
 JOSEPH KNAPP

1. STROH'S YOUR WRIST AND TEMPER SAVER FROM... BANKO BEVERAGE CO. ALLENTOWN, PA. PH. 434-0147 FROM ONE BEER LOVER TO ANOTHER (BLACK ON RED)



R-76
CHRISTMAS ORNAMENT FIREPLACE PLACE 3 CANS
CAP LIFTER
(SEE R-74)
MADE IN CHINA
2 9/16"
ART SANTEN

1. SAM ADAMS LIGHT (ON CAN) SAM ADAMS BOSTON LAGER (ON CAN) SAM ADAMS WINTER LAGER (ON CAN) HOPPY HOLIDAYS (ON RIBBON)



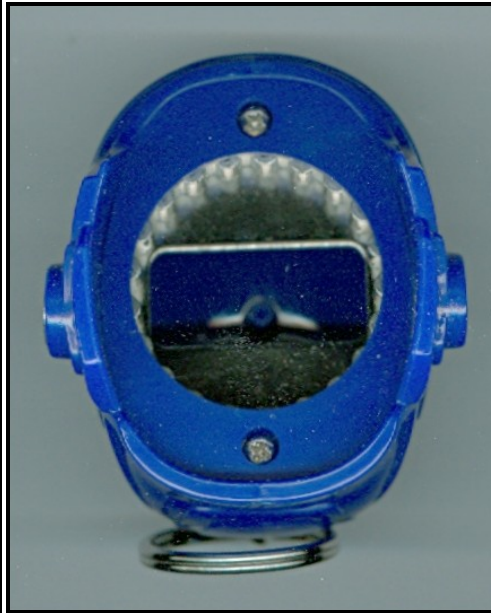
R-77
WALLET
CAP LIFTER
MARKED "FOSSIL STANDARD ISSUE 75082 WWW.FOSSIL.COM
/ STD. 1954 QUALITY SPEC. 64778"
4" X 3" (OPENER 2 3/8")
ART SANTEN

1. BUD LIGHT (LOGO)



R-78
HELMET
CAP LIFTER
(MAGNETS IN EARS)
2 3/4"
MIKE KREJCI

- 1. BUD LIGHT (C LOGO) (NHL IN LOGO)



R-79
BOTTLE
CAP LIFTER/LED LIGHT
4"
MIKE KREJCI

- 1. MILLER GENUINE DRAFT (ON BODY & NECK LABELS)



R-80
SURFBOARD
CAP LIFTER
3 1/8"

- 1. JOHN STANLEY
KONA BREWING CO.
(IN LOGO) LONG-
BOARD ISLAND LAGER
(WHITE ON RED)



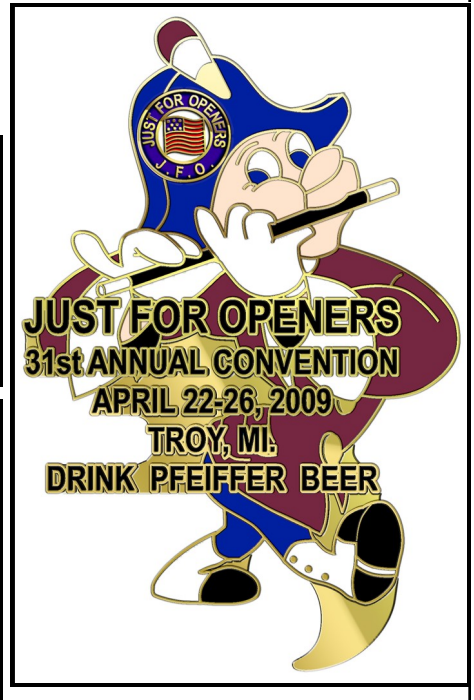
R-81
DEER
CAP LIFTER
2 1/4"
DARVIN STILWELL

- 1. SCHELL'S
(WHITE ON
RED) (5
COLORS)



X-20
2009 JFO
CONVENTION OPENER
"JOHNNY PFEIFFER"
3 1/4"

- 1. STAN SUMMERS
JUST FOR
OPENERS
31ST AN-
NUAL CON-
VENTION



“Opener and eBay Trivia”

Pat will be glad to know I am not buying much on eBay and in fact this quarter saw my largest number of “defeats”. A lot is due to the fact that most of the items I am bidding on fall in the category that if I get them fine and if not, no big deal. These statements having been made it was a decent quarter for overall activity on eBay.

One “A” highlight leaps out because it is rarely seen for sale, an A-11-1 Wooden Shoe and it brought \$104.10. It was a nice buy for someone needing this style. The “B” highlights saw several openers that jump out. A B-1-22 Portsmouth with no paint sold for \$242.50. A couple of years ago I had one in great shape and finally managed to sell it for \$100. At that time the known B-1/B-2 collectors had it and no one was interested. It’s a tough opener to find but the selling price on eBay was high. Follow that one up with an average condition B-2 Coca-Cola opener bringing \$178.02. This seller had to be excited as so many B-2 Coke openers have sold on eBay that they rarely bring close to \$100.00 much less way above it. Another notable “B” was a B-14 Coca-Cola opener from Corinth, Ms. It sold for \$121.38 and is a rare and hard to find Coke opener. Not many openers of any kind are found from Mississippi. Finally a B-18-99 East Tennessee opener sold for \$118.75. I have seen a handful over the years and with the other openers sold during this time, Tennessee openers are “hot”.

The “C” star opener was a C-1-1 Central with a picture of a horse selling for \$181.59. Until now, Mark Barren and myself (via Art Johnson) had the only ones known. The other “C” worth mentioning was a C-13-223 McGovern which realized \$68.00. I did own one and sold it for \$100.00. There are three different McGovern ads on C-13s and all three are very hard to come by. Several major Missouri collectors do not have any of the three much less one of them. In the “D”s or cast iron openers, a D-1-9 Strohs brought \$32.01 and a month later a rusty one sells for \$202.50. Another seller’s home run with a fair value being \$40-\$75 as a rule. Larry Moter finally got an E-4-248 Cambria (from Johnstown, Pa.). The price was not cheap at \$104.93 but one that once again several local collectors do not own this opener.

A recurring theme this quarter is that Coca-Cola openers led or were near the top for highest price in several style categories. “F”s results were dominated by Coca-Cola. An F-5 (Ice Pick/Opener) sold for \$122.50, an F-12 (Spoon/Opener) sold for \$223.57 and another Ice Pick/Opener (F-27) from Baltimore sold for \$103.51. The spoon would be the toughest to find style with Coca-Cola advertising. As I

continue through the results there are a lot of just average openers that sold this quarter (that includes CBOs (cigar box openers) and figural cast iron openers).

Then I come to “L” types or bottle shaped openers. Bunches of L-2-1 Anheuser-Busch bottle corkscrews were sold this past quarter. It’s the same story every quarter for a very common corkscrew. Prices vary greatly but if you want to own one, it is no problem. Two tough beer advertising “L-2”s sold and the highest price one, a L-2-15 Molter, brought \$226.56 despite missing its corkscrew. It is very tough to find but that is a lot of money for an incomplete piece. It’s “buyer beware” again on the German made drop down bottle openers. One with Spearman Beer & Ale (Florida) sold for \$177.50. It’s a fantasy piece that the seller “Airborne306” made up. He buys these openers mainly out of England and sticks a new label on them. The ones he sells with English names are probably legitimate. Any American beer names ones “are not!”

The “M” miscellaneous saw some outstanding results. Gary Deachman needed the M-2-22 Rising Sun to complete his collection of “M-2”s. He asked me to bid for him and unfortunately I was outbid (I was runner-up) as the opener sold for \$419.99. For the first time on eBay an M-3 Coca-Cola “slider” was offered and it sold for \$525.15. For sliders that is a pretty high price but in the world of Coca-Cola openers it is not that unusual. Only the third one I have heard about. Moving on to the “slider/corkscrews”, a very nice condition M-73-14 Budweiser and Becker Beers sold for \$285.00. This is the finest example of an M-73-14 I have seen. One in just good condition sold this quarter for \$123.91.

The “N” or “Novelty Openers” were highlighted by an N-54-1 Blatz knife bringing \$136.99 (I was runner-up again). The other “N” of note was an N-100 “Sliding Window” knife advertising Pepsi=Cola and selling for \$211.99. The “O”s or “Wall Mounts” saw Bob Stahly purchase a nice “O-2-UL” National Premium Beer of Baltimore, Md. for \$132.50. A rarely seen “O-5 Beaufont Ginger Ale” sold for \$177.83. That is a far cry from the early years of eBay when it brought in the \$500.00 range. Pat Stambaugh is the proud owner of a new style beer opener (shape is the same as an O-524 soda style) advertising Grain Belt and Hamm’s beers. It was not cheap at \$158.49 but older new styles rarely are on eBay.

A lot of good beer corkscrews were sold on eBay the last three months but nothing real outstanding. Several differ-

“Opener and eBay Trivia”

ent knives with most being Anheuser-Busch pieces were sold and there seems to be more and more of the “refurbished” A-B knives being sold. This past quarter the two P-38s either had replaced blades and/or Stanhopes. One non A-B knife that generated a lot of interest was a P-165-1 Sebewaing which finished at \$224.72. Condition seemed so-so and I noticed the seller had multiple pictures the first day of the auction but dropped all but a closed blade version for the rest of the auction. Someone found 5 examples of the Hauenstein Beer Pretzel (R-7-1) at a local Minnesota estate sale. The group sold for \$322.00 and not a bad per piece price as this opener easily goes for \$75.00-\$100.00 as a rule. I thought I owned the only known R-14 (can/jar/bottle opener) kitchen tool with an ad for Coca-Cola and Overland/Willys cars. A second one this quarter went for \$184.50.

I was very happy to pick up another 1915 Panama-Pacific multi-tool for \$78.77. Certainly it is an item for the specialty collector. It was patented by R. C. Miner from Faith, South Dakota. Corkscrews saw some unusual ones sold on eBay but the market continues to shift to other avenues for selling. A nice selection of U. S. and foreign patents were sold but once again nothing really outstanding. The common theme I am hearing from several sellers on eBay is, “their fees are going up and overall prices realized are somewhat down”. One would figure the economy is playing a role. When I started on eBay in 1997 the cost of selling an item was 5 to 6 percent. In today’s market, the average is up to 18 to 22 percent which now includes the automatic PayPal fees and the cost of listing items that do not sell. eBay is still going fairly strong but one has to wonder just when the seemingly slow decline at this point starts dropping off rapidly. At what point does eBay stop increasing fees every year (probably never and in another 10 to 15 years they will be charging 50 percent). Time will tell but lets enjoy what we have now because it is not going to get any better (fee wise anyway).

SHOW UPDATE

First off was the ECBA Convention, July 16-18, in Allentown, Pa. Well attended by many of the ECBA veterans but there was very little opener action. I did sell some openers and found a couple but it was overall a slow show except Norm Jay did buy 10 knives from me. I did make a quick trip to see Ben and Cornelia Hoffman and sold Ben a few openers. Pat and the pups came along so it was a nice getaway.

Next up was the NABA Convention in New Ulm, Mn. It is the first week in August and I roomed with Gary Deach-

man. It was his first NABA so I let him seek out and search for openers. The weather was great and I sold a decent amount of openers and a few knives. Pat Stambaugh was kind enough to pick Gary and me both up at the Minneapolis Airport and make the two hour drive to New Ulm. He carried us both ways and going out we saw a couple of nice breweriana collections. One was a Grain Belt beer collection (Ron Kirsch’s) and the second a major Hamm’s beer collection (Stevan Miner’s). Going back to the airport we saw another collection belonging to Brad Wilmes of Mankato, Mn. Breweriana. Gary did find some decent openers and I bought a couple of decent ones also. As with ECBA not a lot of general openers were offered for sale.

Finally the end of September, I roomed again with Gary at the “All New” Show in Suffern, Ny. It is a one day Saturday Show and selling was very slow. Most everyone was looking for New York and New Jersey items. I did buy a nice pile of New York openers along with a couple of beer cigar cutters from a local dealer. Also got my first “Stanley Beer” bottle from Ken Ostrow. It was a fun time and Saturday evening on the way back to Durham I stopped and spent the night with Ben and Cornelia (they are my adopted parents). Once again Ben bought a few openers I had and I got to see his collection which includes many, many good U. S. beer openers and a really outstanding Pennsylvania beer opener collection.

With the tough economy I would have thought more people would be selling but so far that is not the case. The shows and eBay are slow. Maybe collectors can afford to wait until the economy picks up. The search is still fun and those special openers do appear from time to time.



Some of the “Fake” or “Bogus” L-999s

“Opener and eBay Trivia” (“BIN” Buy-It-Now & “DNMR” Did Not Meet Reserve)

| | | |
|--|--|--|
| A-001-014, Maltop, \$26.00 | A-021-132, Trainers, \$45.44 | B-014-028, Hauenstein, \$10.51 |
| A-001-014, Maltop (w/ B-14 Berkley Club & B-21-252 Hagerstown), \$30.52 | A-021-145, Blatz (EX), \$23.49 | B-014-044, Walters, \$9.99 |
| A-001-016, My Favorite, \$35.77 | A-021-158, Narragansett (EX), \$12.03 | B-014-051, Graf, \$7.00 |
| A-001-028, Yosemite, \$23.55 | A-021-8UL, Blue Ribbon Beer Wayne Ice & Cold Storage, \$7.50 | B-014-090, Goetz, \$26.00 |
| A-001-033, American (Good), \$10.47 | A-023-004, Heinly, \$21.61 | B-014-106, Cerva, \$10.50 |
| A-001-048, Sebewaing, \$103.60 | A-023-006, Budweiser, \$23.01 | B-014-120, Cremo (EX), \$12.02 |
| A-001-062, Manhattan, \$10.47 | A-025-010, Pittsburgh (Good), \$9.11 | B-014-999, Berkley Club Ginger Ale (w/ B-21-252 Hagerstown & A-1-14 Maltop), \$30.52 |
| A-001-065, Maloneys, \$41.11 | A-025-010, Pittsburgh (Good), \$10.91 | B-014-999, Coca-Cola (EX), \$12.76 |
| A-001-066, Stone Malt, \$9.95 | A-026-001, Empire, \$49.99 | B-014-999, Coca-Cola (w/ B-19 Coca-Cola), \$36.00 |
| A-001-068, Liberty, \$22.05 | A-028-003, Deppen, \$8.50 | B-014-999, Coca-Cola (w/ Coca-Cola B-19, B-24, G-5), \$109.67 |
| A-001-086, Spokane, \$14.52 | A-028-003, Deppen, \$13.61 | B-014-999, Coca-Cola Corinth MS, \$121.38 |
| A-003-010, Nolan Malt, \$10.50 | A-029-999, Henry Larsen Hancock MI, \$52.88 | B-014-999, Coca-Cola Lancaster OH, \$54.89 |
| A-004-003, Cascade, \$17.00 | A-029-023, Potosi (Good), \$22.57 | B-014-999, Coca-Cola Okmulgee OK (EX), \$24.90 |
| A-004-016, Southern Select, \$39.77 | A-029-056, Royal Canadian (EX), \$13.49 | B-014-999, Coca-Cola Springfield OH, \$46.89 |
| A-004-999, Angelo Saloon Plattsburg, \$31.50 | A-029-065, Widman (EX), \$38.77 | B-014-999, Red Rock Cola, \$7.99 |
| A-004-999, Hub City Soda Works Marysville CA, \$18.19 | A-029-999, Dr Pepper, \$10.50 | B-014-999, Red Rock Cola, \$9.00 |
| A-005-002, Grafts, \$8.50 | A-029-999, Dr Pepper (Spinner), \$26.25 | B-014-CAN, Molson Beer Viau Agent St Jean Que, \$6.50 |
| A-005-007, Utica Club (Good), \$9.55 | A-029-999, Dr Pepper (Spinner), \$32.88 | B-015-004, Huebner, \$32.60 |
| A-005-008, Utica Club, \$11.19 | A-029-999, Napa Rock Bohemian Ginger Ale, \$9.99 | B-015-015, Horlacher (Good), \$11.39 |
| A-005-018, Flecks, \$35.10 | A-029-999, Pepsi=Cola 5c, \$36.56 | B-018-007, Berlin, \$5.55 |
| A-005-078, Western Malt, \$9.99 | A-029-999, Whistle Orange Soda, \$11.26 | B-018-008, Brownsville (Good), \$11.55 |
| A-005-091, Gillum Malt, \$10.49 | A-032-001, Wooden Shoe (EX), \$13.50 | B-018-027, Eulberg, \$27.09 |
| A-005-091, Gillum Malt, \$12.39 | A-032-001, Wooden Shoe (EX), \$18.26 | B-018-055, Olympia / 6352, \$9.99 |
| A-005-999, 1933 Chicago WFs, \$20.51 | A-032-002, Wooden Shoe (EX), \$13.50 | B-018-056, Overland, \$39.99 |
| A-007-026, Marx Malt, \$14.50 | A-035-006, Capitol, \$9.01 | B-018-063, Pointer, \$9.41 |
| A-007-999, Penn Bicycle & Motorcycle Reading PA (Square Key Chain Hole), \$10.49 | A-035-999, Gay-Ola Cola, \$27.49 | B-018-072, Simon Pure, \$13.50 |
| A-008-001, Ruppert, \$13.50 | A-035-999, Gay-Ola Cola, \$49.25 | B-018-099, East Tennessee, \$118.75 |
| A-009-001, Buffalo Var A, \$25.49 | A-035-999, Jakes Billiard Palor Rick Lake WI (No Key Chain Hole), \$8.58 | B-018-116, Rainier, \$20.00 |
| A-009-012, Ringler Var B (Fair), \$66.00 | A-038-001, Hamms, \$38.87 | B-018-320, Western, \$27.00 |
| A-009-020, Gallion (Fair), \$14.95 | A-042-003, Franklin, \$36.99 | B-018-325, Bartels, \$8.50 |
| A-009-022, Fresno, \$54.00 | A-042-026, Pearl, \$99.99 | B-018-563, Uniontown (Good), \$22.11 |
| A-009-999, 6th Ward Hotel Reading PA, \$42.51 | A-053-999, Coca-Cola In Bottles, \$130.00 | B-018-577, Cumberland, \$15.59 |
| A-009-999, Fan Taz, \$34.99 | A-056-999, Orange Crush, \$15.01 | B-018-629, Cumberland (Good), \$28.50 |
| A-009-999, Schusters Root Beer, \$15.50 | A-509-999, Nehi, \$5.99 | B-018-8UL, Lyons Bottle Beer Clinton IA, \$42.77 |
| A-011-001, Wooden Shoe, \$104.10 | B-001-004, Gund, \$21.10 | B-018-8UL, McKechnie Brewing Canadaigua NY (Fair), \$29.99 |
| A-012-010, Becker, \$10.50 | B-001-022, Portsmouth (Good), \$242.50 | B-018-999, Buffalo Rock Ginger Ale, \$7.72 |
| A-013-999, C O Hare Automobiles Noblesville IN, \$46.55 | B-001-028, Reno (Fair), \$77.54 | B-018-999, Coca-Cola In Bottles, \$59.89 |
| A-013-999, Stecher Motorcycles & Bicycles Detroit MI, \$26.24 | B-002-001, Blatz (Brass) (Good), \$12.50 | B-018-CAN, Olands Pontiac Ale Beer Saint John NB, \$14.99 |
| A-015-011, Leisy, \$22.46 | B-002-016, Phoenix, \$34.53 | B-019-047, Flecks, \$11.59 |
| A-015-014, Porters, \$47.99 | B-002-030, Hanley, \$33.13 | B-019-062, Dick Bros (Fair), \$24.03 |
| A-015-019, Fremont Var A, \$28.99 | B-002-999, Coca-Cola, \$37.00 | B-019-087, Stegmaier (EX), \$15.50 |
| A-015-042, South Bend, \$13.50 | B-002-999, Coca-Cola (EX), \$178.02 | B-019-104, Schellhas, \$31.00 |
| A-015-999, Coca-Cola In Bottles (Good), \$63.00 | B-003-004, Edelweiss, \$10.50 | B-019-162, Townsend, \$69.55 |
| A-017-023, Luxus, \$21.10 | B-005-004, Reno, \$68.89 | B-019-170, Minneapolis (w/ B-22-88 Minneapolis), \$29.00 |
| A-017-999, Cerveza Hatuey (Cuban), \$22.35 | B-005-004, Reno (w/ 6 Misc Openers), \$34.99 | B-019-195, Walla Walla, \$19.95 |
| A-017-999, Coca-Cola In Bottles, \$72.00 | B-005-030, Storz, \$19.75 | B-019-200, Park, \$29.00 |
| A-017-999, Rochester Soda Mineral Water, \$29.99 | B-005-055, Sweetwater, \$32.00 | B-019-999, Coca-Cola (w/ B-14 Coca-Cola), \$36.00 |
| A-017-CAN, Union Brewing Nanaimo BC, \$53.50 | B-006-008, Valley Forge, \$17.51 | B-019-999, Coca-Cola In Bottles (w/ Coca-Cola B14, B-24, G-5), \$109.67 |
| A-020-015, Amsterdam, \$11.49 | B-008-999, Drink Brandimist, \$9.99 | B-021-015, Evans, \$10.49 |
| A-020-025, Homestead (EX), \$36.61 | B-012-003, Gold Top, \$61.61 | B-021-017, Flocks, \$34.60 |
| A-020-039, Wayne, \$9.99 | B-013-007, Haberle, \$30.09 | B-021-042, Jamestown, \$18.39 |
| A-020-039, Wayne, \$13.99 | B-013-046, Buckeye Malt (w/ B-13 Nifty), \$15.01 | B-021-057, Narragansett, \$8.49 |
| A-021-031, Prima, \$23.49 | B-013-141, Dufaud Tierney Whiskey MN, \$9.99 | B-021-078, Schreiber (Good), \$9.95 |
| A-021-035, West Virginia (EX), \$13.63 | B-013-999, Becks Bar Dillon MT, \$9.99 | B-021-085, Thieme & Wagner, \$6.91 |
| A-021-035, West Virginia (EX), \$6.00 | B-013-999, Budd's Thirst Quencher Ellicott City MD, \$19.97 | B-021-086, Tivoli, \$12.84 |
| A-021-039, Foss-Schneider, \$25.09 | B-013-999, Cracker Jack Marshmallows, \$19.25 | B-021-096, Becks (Good), \$6.99 |
| A-021-042, Moose, \$10.75 | B-013-999, Perinos Bar Butte MT, \$18.50 | B-021-150, Consumers, \$14.36 |
| A-021-054, Rahr, \$26.26 | B-013-999, Silver Dollar Bar Anaconda MT, \$26.56 | B-021-158, Fort Pitt (Good), \$10.19 |
| A-021-075, Engesser, \$26.26 | B-013-999, Tiffany & Co (Sterling), \$115.50 | |
| A-021-080, Hauenstein, \$71.51 | B-014-013, Feckers, \$24.27 | |
| | B-014-027, Hamms, \$24.59 | |

“Opener and eBay Trivia” (“BIN” Buy-It-Now & “DNMR” Did Not Meet Reserve)

| | | |
|---|---|--|
| B-021-170, Kaier, \$34.09 | C-010-044, Greenways, \$9.99 | E-004-003, American, \$48.56 |
| B-021-187, Northampton, \$5.00 | C-010-045, Regal, \$9.99 | E-004-059, McDermott, \$7.53 |
| B-021-187, Northampton, \$10.50 | C-011-001, Connecticut Valley Var B (Good), \$6.99 | E-004-192, Robin Hood, \$6.77 |
| B-021-192, Peterson, \$24.50 | C-011-021, Tivoli, \$36.00 | E-004-229, Humboldt, \$22.01 |
| B-021-221, Berghoff (Good), \$4.99 | C-011-021, Tivoli, \$14.49 | E-004-248, Cambria, \$104.93 |
| B-021-225, Blatz (Good), \$9.99 | C-011-026, Wayne, \$6.75 | E-004-296, Fredericksburg, \$14.54 |
| B-021-252, Hagerstown (w/ B-14 Berkley Club & A-1-14 Maltop), \$30.52 | C-012-140, Northern, \$9.01 | E-004-999, Lambert 7Up & Moxie, \$6.00 |
| B-021-326, Hartig (EX), \$78.77 | C-012-999, (w/ Badge) Cavalier Hotel Virginia Beach VA, \$31.00 | E-004-999, Manitou Original Gas Carbonation, \$9.99 |
| B-021-352, Montana, \$26.00 | C-013-023, DuBois, \$9.99 | E-004-999, Moxie, \$11.05 |
| B-021-381, Metz, \$20.50 | C-013-023, Dubois, \$10.77 | E-004-999, Red Hat Gasoline, \$9.95 |
| B-021-999, Excelsior Autocycle Minneapolis St Paul MN, \$31.00 | C-013-030, F & S, \$19.59 | E-005-009, Hyde Park 75, \$6.50 |
| B-021-999, Waupun Bottling Works, \$12.02 | C-013-039, Flocks, \$22.22 | E-005-021, Fitger, \$7.00 |
| B-022-004, Falstaff, \$12.01 | C-013-073, Muesel, \$19.59 | E-005-034, Colorado (EX), \$26.51 |
| B-022-012, Leisen & Henes, \$16.71 | C-013-113, Tivoli, \$20.50 | E-005-046, Walters, \$14.01 |
| B-022-088, Minneapolis (w/ B-19-170 Minneapolis), \$29.00 | C-013-115, Von, \$7.91 | E-005-8UL, Carling National Breweries Frankenmuth MI, \$7.52 |
| B-022-141, Gold Bond (EX), \$14.53 | C-013-115, Von (Good), \$26.01 | E-006-008, Burkhardt, \$3.99 |
| B-023-036, Ebner, \$36.10 | C-013-120, Zieglers, \$5.53 | E-006-024, Flocks, \$41.05 |
| B-023-062, Brucks, \$10.50 | C-013-126, Christmanns, \$22.50 | E-006-071, Diehl, \$9.99 |
| B-023-099, St Cloud, \$28.88 | C-013-132, Gem, \$5.00 | E-006-089, Superior (w/ E-14-20 Best), \$11.61 |
| B-024-002, Auto City, \$76.50 | C-013-158, Victor, \$14.50 | E-006-116, Moose, \$9.99 |
| B-024-004, Buffalo, \$4.99 | C-013-194, Star (EX), \$7.27 | E-006-140, Jenner, \$9.99 |
| B-024-008, Carnegie, \$5.24 | C-013-223, McGovern, \$68.00 | E-006-140, Jenner, \$21.73 |
| B-024-034, Walters (w/ B-24-35 Walters), \$22.72 | C-013-239, Manistee, \$33.86 | E-006-140, Jenner, \$33.34 |
| B-024-034, Walters (w/ B-24-35 Walters), \$26.57 | C-013-251, Cream City (w/ C-13-288 Fox), \$16.50 | E-006-177, Watertown, \$19.49 |
| B-024-035, Walters (8 Examples) (EX), \$24.50 | C-013-266, Hollenbru, \$18.27 | E-006-177, Watertown, \$26.60 |
| B-024-035, Walters (w/ B-24-34 Walters), \$22.72 | C-013-270, West Bend, \$9.99 | E-006-999, Nehi Poughkeepsie NY, \$9.99 |
| B-024-035, Walters (w/ B-24-34 Walters), \$26.57 | C-013-288, Fox (w/ C-13-251 Cream City), \$16.50 | E-006-CAN, Saskatoon Beer, \$10.50 |
| B-024-047, Pointer, \$9.99 | C-013-289, Geyer, \$17.57 | E-008-037, Liebmann, \$28.11 |
| B-024-047, Pointer, \$3.80 | C-013-293, Williams (Good), \$46.00 | E-008-050, Bachrad Feld (w/ 3 Misc Openers), \$7.06 |
| B-024-105, Moore & Quinn, \$24.52 | C-017-018, Moose, \$9.99 | E-008-999, Chelmsford, \$11.50 |
| B-024-105, Moore & Quinn, \$26.26 | C-017-031, Wayne, \$9.99 | E-008-999, Moxie, \$17.56 |
| B-024-999, Coca-Cola In Bottles (w/ Coca-Cola B14, B-19, G-5), \$109.67 | C-017-047, Keeley, \$6.76 | E-014-020, Best (w/ E-6-89 Superior), \$11.61 |
| B-027-001, Miller (Brass/Green), \$19.03 | C-021-005, R & H, \$10.50 | E-014-058, Delmarva, \$22.41 |
| B-029-8UL, Columbia Brewing New Orleans (w/ 5 Misc Openers), \$27.02 | C-022-002, Ruppert, \$8.27 | E-014-058, Delmarva, \$7.53 |
| B-032-CAN, Molson Ale (1 Keychain Hole) (EX), \$9.99 | CBO-BB-03, Valentine Cigars Wyomissing PA, \$9.95 | E-014-074, Engesser (w/ E-14-181 Kato (Fair)), \$9.99 |
| B-032-CAN, Molson Ale (1 Keychain Hole) (EX), \$10.50 | CBO-DHM-10, Union Made Cigars, \$9.95 | E-014-168, Krueger (w/ I-11-91 Krueger), \$19.50 |
| B-032-CAN, Molson Ale (2 Keychain Holes), \$10.50 | CBO-HOR-04, Fuller & Fuller Chicago, \$23.50 | E-014-181, Kato (Fair) (w/ E-14-74 Engesser), \$9.99 |
| B-035-008, Sunset, \$9.95 | CBO-PKT-03, German Brand, \$22.50 | E-014-249, San Antonio, \$12.50 |
| B-035-999, Creamery Chinook MT, \$16.06 | CBO-PKT-04, German Brand, \$20.50 | E-014-278, Storck, \$15.55 |
| B-042-011, Kerns (w/ 4 Misc Openers), \$16.52 | CBO-PKT-06, Tucketts Club Cigar, \$15.51 | E-014-304, Williams (EX), \$31.00 |
| B-043-999, E O Orchard Grand Central Bar Casper WY, \$36.55 | CBO-PKT-07, San Felice Cigars, \$22.27 | E-014-314, Arizona, \$8.51 |
| B-044-999, Gordons Gin, \$5.75 | CBO-RBO-03, Woodbury 10c Cigar, \$11.10 | E-014-361, Fox Deluxe (w/ E-14-364 Fritz), \$8.50 |
| B-048-002, Gold Top (EX), \$76.00 | CBO-RBO-04, Havana Cigars, \$26.60 | E-014-364, Fritz (w/ E-14-361 Fox Deluxe), \$8.50 |
| B-052-007, Prairie Du Chen (Good), \$19.49 | CBO-RND-03, Wilson Cigars Reading PA, \$42.50 | E-014-381, Hochgreve, \$22.01 |
| B-055-002, Bud Light, \$8.31 | CBO-RND-04, ??? Cigars ??? Ohio, \$11.28 | E-014-427, Progress, \$21.50 |
| B-060-004, Feigenspan, \$19.99 | CBO-SEP-03, Tucker & Goodwin Cigars, \$34.99 | E-014-477, Breidt, \$18.50 |
| B-071-999, Blank (No Ad), \$19.71 | CBO-SHM-02, (Blank), \$69.00 | E-014-484, Crete, \$13.52 |
| B-075-999, City Billiards Lewistown MT, \$13.50 | CBO-SHM-02, (Blank), \$49.00 | E-014-521, Magnolia, \$20.53 |
| B-081-001, Shiner (Mint), \$6.99 | CBO-SHM-03, Burro Cigars, \$21.00 | E-014-528, Olt, \$26.60 |
| C-001-001, Central, \$181.59 | CBO-SHM-03, Los Ramos The Cigar You Can Inhale, \$26.00 | E-014-534, Primo (EX), \$16.00 |
| C-001-004, Scheidt (EX), \$31.04 | D-001-001, A-B Var B, \$11.50 | E-014-542, Robin Hood, \$6.77 |
| C-003-001, Schlitz, \$45.00 | D-001-009, Strohs, \$32.01 | E-014-690, Glacier, \$11.05 |
| C-006-008, Thomas, \$4.99 | D-001-009, Strohs (Rusty), \$202.50 | E-014-806, Old Stock, \$23.50 |
| C-010-007, Eagle, \$9.95 | D-001-014, Fauerbach, \$21.50 | E-014-999, Orange Crush, \$8.52 |
| C-010-041, Cadillac (Good), \$26.00 | D-002-006, Schlitz, \$13.49 | E-014-999, Wright Root Beer N O LA, \$10.00 |
| | D-003-022, Roessle, \$22.54 | E-016-008, Deppen, \$11.49 |
| | D-003-022, Roessle, \$43.00 | E-501-999, Fischers Dairy Triadelphia WV, \$33.72 |
| | D-012-007, Mass, \$7.00 | F-002-038, Falstaff (EX), \$32.69 |
| | E-001-030, Hemrich, \$9.88 | F-003-001, Potosi, \$9.99 |
| | E-003-057, Auto City, \$70.09 | F-004-020, Schlitz, \$16.51 |
| | E-003-057, Auto City, \$37.66 | |

“Opener and eBay Trivia” (“BIN” Buy-It-Now & “DNMR” Did Not Meet Reserve)

| | | |
|--|---|---|
| F-004-999, 7-Up Austin TX, \$17.28 | I-011-037, Dawsons, \$14.50 | L-002-999, Peebles Old Cabinet Whiskey, \$31.00 |
| F-005-999, Coca-Cola In Bottles, \$122.50 | I-011-091, Krueger (w/ E-14-168 Krueger), \$19.50 | L-002-999, Wilsons Old Empire Rye, \$67.99 |
| F-006-015, Bartels (Good), \$26.51 | I-012-999, Studebaker Big Four Division, \$9.00 | L-004-011, Flecks, \$24.60 |
| F-006-041, Canton, \$19.38 | I-015-010, Esslingers (Copper), \$11.50 | L-004-011, Flecks (2 Examples), \$52.00 |
| F-006-098, Rock Island, \$21.71 | I-017-195, Tropical Beer, \$11.61 | L-004-013, Iron City (EX), \$13.11 |
| F-006-999, Coca-Cola Waynesboro PA, \$67.01 | I-020-020, Southern Select, \$21.16 | L-004-053, Becks, \$9.50 |
| F-007-017, Potosi, \$30.99 | I-020-032, Pabst Schaefer Rolling Rock, \$19.38 | L-999-999, (Similar L-1 But Bottle Shaped) Booths Gin, \$12.50 |
| F-008-999, Dr Pepper In Bottles, \$37.89 | I-020-999, American Can Company, \$13.00 | L-999-999, (Similar L-1 But Bottle Shaped) Bullfrog Beer (Fantasy), \$50.97 |
| F-009-005, National (Poor), \$12.50 | I-025-999, Animal Trap Co Lititz PA (Half as Wide as I-25), \$23.50 | L-999-999, (Similar L-1 But Bottle Shaped) Captains Morgan Jamaica Rum (Fantasy??), \$37.36 |
| F-009-008, Gutsch, \$23.10 | I-030-005, Leinenkugel (Mint), \$9.00 | L-999-999, (Similar L-1 But Bottle Shaped) Diamond Beer (Fantasy ??), \$29.25 |
| F-009-8UL, American Brewing New Orleans, \$70.01 | J-013-999, Nite Owl Radersburg MT, \$9.99 | L-999-999, (Similar L-1 But Bottle Shaped) Down (Fantasy ??), \$41.00 |
| F-011-001, Cleveland & Sandusky, \$24.50 | K-001-003, Pearl, \$9.99 | L-999-999, (Similar L-1 But Bottle Shaped) Drop Down (Fantasy ??), \$46.00 |
| F-012-999, Coca-Cola, \$223.57 | K-002-003, Jackson, \$31.33 | L-999-999, (Similar L-1 But Bottle Shaped) Guinness (Fantasy ??), \$8.99 |
| F-013-003, Yuengling, \$68.78 | K-003-001, Rheingold, \$9.00 | L-999-999, (Similar L-1 But Bottle Shaped) Guinness Harp Lager, \$15.50 |
| F-020-001, Storz (EX) (BIN), \$35.00 | K-005-007, Pabst Var B, \$25.49 | L-999-999, (Similar L-1 But Bottle Shaped) Haigs Gold Label Scotch, \$9.95 |
| F-027-999, Coca-Cola Baltimore MD, \$103.51 | L-001-002, Budweiser, \$19.38 | L-999-999, (Similar L-1 But Bottle Shaped) Heilemans Old Style Beer (Fantasy), \$34.33 |
| F-032-999, United Bottling Co Gary IN, \$9.99 | L-001-005, Pabst (EX), \$32.95 | L-999-999, (Similar L-1 But Bottle Shaped) Ind Coop (Fantasy), \$26.58 |
| F-034-999, Suburban Club Ginger Ale, \$12.45 | L-001-006, Ruppert, \$30.01 | L-999-999, (Similar L-1 But Bottle Shaped) Lucky Lager (Fantasy), \$50.58 |
| F-036-8UL, (Round Handle) Zetts Beer, \$53.00 | L-001-006, Ruppert, \$10.49 | L-999-999, (Similar L-1 But Bottle Shaped) Seagrams VO, \$8.50 |
| FBOC-040, Handy Hans, \$153.50 | L-001-007, Schlitz, \$10.50 | L-999-999, (Similar L-1 But Bottle Shaped) Seagrams VO, \$15.55 |
| FBOC-043, Grass Skirt Greek, \$145.50 | L-001-999, Libbys Juice, \$38.55 | L-999-999, (Similar L-1 But Bottle Shaped) Spearman's Beer & Ale (Fantasy), \$177.50 |
| FBOC-043, Grass Skirt Greek, \$163.50 | L-001-999, Libbys Juice, \$43.00 | L-999-999, (Similar L-1 But Bottle Shaped) Yuengling Beer (Fantasy), \$12.85 |
| FBOC-171, Copper Nude, \$76.57 | L-001-999, Mackenson Stout, \$84.00 | M-001-005, Harvard Var A (EX), \$24.99 |
| G-001-004, Buckeye, \$9.95 | L-002-001, A-B Var A, \$19.00 | M-001-013, Liebmann Conqueror (EX), \$132.50 |
| G-001-043, Jax, \$10.54 | L-002-001, A-B Var A, \$19.00 | M-002-003, Goebel (EX), \$78.00 |
| G-001-046, Berghoff, \$6.06 | L-002-001, A-B Var A, \$20.26 | M-002-022, Rising Sun, \$419.99 |
| G-001-999, Pepsi=Cola, \$9.99 | L-002-001, A-B Var A, \$22.03 | M-002-023, Pilsen (EX), \$59.00 |
| G-001-999, Pepsi=Cola 5c, \$15.49 | L-002-001, A-B Var A, \$25.33 | M-003-001, Beverwyck, \$19.00 |
| G-004-019, Jackson, \$6.95 | L-002-001, A-B Var A, \$25.49 | M-003-008, Erie, \$22.50 |
| G-004-020, Walters, \$20.50 | L-002-001, A-B Var A, \$32.00 | M-003-013, Philadelphia, \$15.51 |
| G-005-001, Blatz (w/ H-7-2 Blatz), \$5.99 | L-002-001, A-B Var A, \$35.00 | M-003-019, Zetts (EX), \$18.26 |
| G-005-014, Lion, \$23.00 | L-002-001, A-B Var A, \$19.27 | M-003-028, Victor, \$52.00 |
| G-005-015, Schemm Smith, \$12.99 | L-002-001, A-B Var A, \$26.00 | M-003-999, 1933 & 1934 Chicago WFs (2 Openers) (EX), \$23.05 |
| G-005-999, Coca-Cola (w/ Coca-Cola B-14, B-19, B-24), \$109.67 | L-002-001, A-B Var A, \$27.90 | M-003-999, 1933 Chicago WFs, \$9.50 |
| G-005-999, Nehi, \$15.50 | L-002-001, A-B Var A, \$29.00 | M-003-999, 1933 Chicago WFs (EX), \$22.01 |
| G-009-071, Schells, \$66.00 | L-002-001, A-B Var A, \$31.00 | M-003-999, Coca-Cola (EX), \$525.15 |
| G-009-094, Oertels, \$17.50 | L-002-001, A-B Var A, \$46.00 | M-003-999, Dewitt Hotel, \$19.91 |
| H-002-002, Hanley (3 Examples), \$11.01 | L-002-001, A-B Var A, \$83.00 | M-003-999, Dr Pepper, \$39.95 |
| H-002-022, Hanley, \$15.50 | L-002-001, A-B Var A, \$18.05 | M-003-999, Dr Pepper, \$42.00 |
| H-002-022, Hanley, \$23.03 | L-002-001, A-B Var A, \$19.99 | M-003-999, Dr Pepper (EX), \$25.40 |
| H-002-030, Pabst (EX), \$9.99 | L-002-001, A-B Var A, \$21.05 | M-003-999, Dr Pepper (EX), \$68.89 |
| H-002-118, Yuengling, \$9.00 | L-002-001, A-B Var A, \$26.00 | M-003-999, Dr Pepper (Good), \$26.55 |
| H-002-197, Star Union (EX), \$59.09 | L-002-001, A-B Var A, \$28.00 | M-003-999, Moxie (EX), \$44.00 |
| H-002-999, 7Up Tom Joyce (Bottle), \$28.27 | L-002-001, A-B Var A, \$30.00 | M-003-999, Moxie (EX), \$46.02 |
| H-005-007, Jolly Scot, \$10.85 | L-002-001, A-B Var A, \$30.99 | M-003-CAN, City Club (Good), \$24.99 |
| H-007-002, Blatz (w/ G-5-1 Blatz), \$5.99 | L-002-001, A-B Var A, \$45.44 | M-005-006, Schlitz, \$46.01 |
| H-007-013, Miller, \$67.88 | L-002-001, A-B Var A, \$67.99 | |
| H-008-001, Globe, \$14.99 | L-002-001, A-B Var A (EX), \$19.50 | |
| H-008-015, Schlitz, \$2.49 | L-002-001, A-B Var A (w/ L-2-2 A-B Malt), \$76.00 | |
| H-008-015, Schlitz (EX), \$5.00 | L-002-001, A-B Var B (Fair), \$45.41 | |
| H-008-999, Pepsi=Cola, \$10.00 | L-002-002, A-B Malt Nutrine, \$34.00 | |
| H-008-999, Pepsi=Cola, \$18.51 | L-002-002, A-B Malt Nutrine, \$28.00 | |
| H-008-999, Pepsi=Cola (EX), \$20.50 | L-002-002, A-B Malt Nutrine, \$49.95 | |
| H-008-999, Pepsi=Cola (EX), \$30.00 | L-002-002, A-B Malt Nutrine (w/ L-2-1 A-B Var A), \$76.00 | |
| H-010-999, Columbia Cigar Spokane WA, \$17.74 | L-002-005, Eldridge (Good), \$53.00 | |
| H-010-999, Norris Grain Co Toledo OH, \$12.51 | L-002-015, Molter (Corkscrew Missing), \$226.56 | |
| H-010-999, Suburban Club Ginger Ale, \$9.99 | L-002-019, Terre Haute, \$187.50 | |
| H-010-CAN, Western Canada Brewing Western Bud, \$16.50 | L-002-999, Compliments of Barney 1899, \$56.50 | |
| I-003-032, Mitchell (w/ I-13 Mitchell), \$16.38 | L-002-999, Dewars Imperial Whiskey, \$78.66 | |
| I-006-099, Hensler, \$14.38 | L-002-999, Old Parchment Whiskey James Powers NY, \$56.00 | |
| I-007-053, Hulls, \$11.51 | | |
| I-007-999, Kemp's Sun-Ray'd Tomato Juice, \$31.00 | | |
| I-008-001, Fox, \$7.50 | | |
| I-010-002, Red Top, \$9.38 | | |

“Opener and eBay Trivia” (“BIN” Buy-It-Now & “DNMR” Did Not Meet Reserve)

| | | |
|---|--|--|
| M-019-002, Miller, \$29.00 | N-002-001, Dixie (EX), \$23.03 | O-004-016, Griesedieck Bros Var B, \$23.49 |
| M-019-002, Miller, \$36.01 | N-004-002, Wooden Shoe, \$66.01 | O-004-016, Griesedieck Bros Var B, \$26.20 |
| M-019-002, Schlitz, \$7.99 | N-004-999, Brass Handles, \$42.83 | O-005-003, Dixie (EX), \$12.94 |
| M-019-003, Narragansett, \$49.95 | N-004-999, Nugrape, \$11.51 | O-005-003, Dixie (Good), \$6.51 |
| M-019-003, Narragansett, \$41.00 | N-004-999, Nugrape (EX), \$19.99 | O-005-003, Dixie 45, \$10.50 |
| M-019-005, Busch, \$4.99 | N-004-999, Tankage Meat Scraps, \$9.99 | O-005-003, Dixie 45, \$15.14 |
| M-019-022, Schlitz, \$5.00 | N-004-999, Tankage Meats (EX), \$16.50 | O-005-006, Jackson (EX), \$28.25 |
| M-019-022, Schlitz, \$11.01 | N-005-001, West End, \$40.99 | O-005-007, Lucky Lager, \$18.50 |
| M-019-022, Schlitz, \$14.99 | N-005-001, West End, \$22.00 | O-005-007, Lucky Lager (EX), \$23.50 |
| M-019-022, Schlitz, \$11.50 | N-005-001, West End, \$23.50 | O-005-008, Pearl (EX), \$24.99 |
| M-019-022, Schlitz, \$29.28 | N-005-001, West End, \$62.07 | O-005-009, Falstaff, \$11.08 |
| M-019-022, Schlitz, \$13.49 | N-005-999, Shiner Brewery (Map of Texas) Spoetzi (Fantasy Knife), \$56.90 | O-005-010, Southern Select, \$14.50 |
| M-019-022, Schlitz, \$15.56 | N-017-001, National, \$17.48 | O-005-014, Simon Pure, \$15.50 |
| M-019-999, Anaconda, \$10.49 | N-017-001, National (EX), \$9.50 | O-005-023, Regal Pale (EX), \$50.90 |
| M-019-999, Coca-Cola (Fantasy), \$37.51 | N-020-999, The Palace Saloon Almena WI, \$58.88 | O-005-999, Beaufont Ginger Ale, \$177.83 |
| M-019-999, Dr Pepper (Fantasy), \$69.01 | N-023-007, Strohs, \$10.50 | O-005-999, Crosby (DNMR), \$66.00 |
| M-019-999, Heineken, \$14.01 | N-024-001, Pickwick (EX), \$19.59 | O-005-999, Dr Pepper Good For Life, \$15.50 |
| M-019-999, Orange Crush (Fantasy), \$55.41 | N-024-999, Coca-Cola, \$37.96 | O-005-999, Frigidaire, \$77.00 |
| M-019-999, Pepsi=Cola, \$26.00 | N-027-8UL, Joseph Schlitz Brewing Co, \$13.59 | O-005-999, Nehi, \$76.15 |
| M-019-999, Pepsi=Cola, \$26.51 | N-029-007, Fredericks, \$18.35 | O-005-999, Orange Crush, \$51.83 |
| M-019-999, Pepsi=Cola, \$27.00 | N-030-004, Premier, \$0.99 | O-005-999, Orange Crush (Good), \$43.00 |
| M-019-999, Pepsi=Cola, \$28.02 | N-032-001, Budweiser (EX), \$25.05 | O-005-999, Red Rock Cola (MIB), \$86.00 |
| M-019-999, Pepsi=Cola, \$16.26 | N-032-001, Budweiser (MIB), \$19.00 | O-005-999, Royal Crown Cola, \$33.69 |
| M-019-999, Tiffany & Co (EX), \$36.00 | N-040-005, Olympia, \$14.17 | O-005-999, White Rock Ginger Ale, \$8.50 |
| M-019-999, Whistle (Fantasy), \$21.27 | N-040-007, Lone Star, \$24.95 | O-005-999, White Rock Ginger Ale, \$5.79 |
| M-025-001, Lemp, \$50.00 | N-040-007, Lone Star, \$10.75 | O-006-001, Esslingers, \$39.00 |
| M-025-001, Lemp, \$21.71 | N-040-007, Lone Star, \$33.00 | O-006-005, Jackson, \$44.51 |
| M-025-001, Lemp, \$76.00 | N-040-007, Lone Star (EX), \$20.05 | O-006-999, Dr Pepper, \$68.89 |
| M-027-001, Lone Star (EX), \$52.15 | N-040-007, Lone Star (EX), \$25.45 | O-014-999, Sun Crest Soda (EX), \$15.50 |
| M-027-001, Lone Star (Mint), \$25.69 | N-040-007, Lone Star (EX), \$18.50 | O-014-CAN, O'Keefes, \$9.99 |
| M-029-037, Budweiser, \$10.50 | N-040-007, Lone Star (EX), \$24.99 | O-017-001, Rolling Rock (EX), \$78.77 |
| M-029-999, Pepsi=Cola Sociable, \$33.56 | N-040-007, Lone Star (EX), \$43.52 | O-017-001, Rolling Rock (MIB), \$24.45 |
| M-029-999, Pepsi=Cola Hendrix Bottling Mattoon IL, \$10.50 | N-054-001, Blatz, \$136.49 | O-017-001, Rolling Rock (Mint), \$19.99 |
| M-030-8UL, Coors Beer V & M Colby KS, \$3.99 | N-054-999, (Blank), \$45.03 | O-017-001, Rolling Rock (Mint), \$19.99 |
| M-030-999, O-So Beverages, \$14.99 | N-074-8UL, Budweiser Beer (EX), \$48.89 | O-018-8UL, Acme Brew California Bottling Assn, \$40.09 |
| M-033-001, Drewrys (EX), \$8.29 | N-078-999, Chero-Cola (Good), \$29.99 | O-502-999, The Liquid, \$14.25 |
| M-035-002, Lone Star (w/ Lone Star Lighter), \$41.00 | N-084-001, Storz, \$14.26 | O-505-999, Coca-Cola, \$9.99 |
| M-039-004, Fehrs (MIB), \$16.39 | N-085-999, Nehi (Repro), \$9.99 | O-505-999, Orange Crush, \$36.00 |
| M-052-001, Kansas Cities (Good), \$40.00 | N-100-999, Pepsi=Cola (EX), \$211.99 | O-506-999, 7Up, \$15.50 |
| M-073-014, Budweiser/Becker (EX), \$285.00 | N-126-001, Anheuser-Busch (EX), \$17.25 | O-508-999, Pepsi=Cola, \$31.00 |
| M-073-014, Budwesier/Becker (Good), \$123.91 | N-148-003, Consumers, \$11.61 | O-512-999, Brunswick, \$52.51 |
| M-073-999, 1934 Chicago WFs, \$76.00 | N-148-003, Erie, \$52.23 | O-514-999, Grapette, \$32.00 |
| M-073-999, American Box Co San Francisco, \$155.51 | N-506-999, Coca-Cola In Bottles, \$44.05 | O-515-999, Coca-Cola (MIB), \$13.00 |
| M-073-999, Hotel Gowman Seattle, \$89.99 | N-506-999, Coca-Cola In Bottles, \$59.99 | O-523-999, Coca-Cola, \$60.06 |
| M-073-999, Texaco Butte MT, \$93.35 | N-506-999, Coca-Cola In Bottles, \$69.99 | O-8UL-8UL, (Like O-524) Grain Belt & Hamms Beer, \$158.49 |
| M-076-001, Schlitz, \$9.99 | N-506-999, Coca-Cola In Bottles, \$78.77 | P-001-009, Lemp (w/ Williamson Wood-T), \$157.50 |
| M-084-001, Neuweiler (MIB), \$57.00 | N-506-999, Coca-Cola In Bottles, \$33.00 | P-007-012, Smith, \$15.00 |
| M-088-001, Blatz, \$22.72 | N-999-999, (Multi-Tool Ladies Leg) Opener, Cigar Cutter, Buttonhook, File Blade, \$52.88 | P-007-012, Smith (EX), \$44.87 |
| M-140-999, 1934 Chicago WFs (Green), \$47.99 | O-001-007, Balboa (MIB), \$92.00 | P-007-8UL, Tip Top Malt Extract Reading PA, \$12.10 |
| N-002-001, Dixie, \$26.00 | O-002-8UL, National Premium Beer Baltimore MD (EX), \$132.50 | P-008-069, Dick & Bros, \$45.63 |
| N-002-001, Dixie, \$26.42 | O-002-999, 7Up (EX), \$25.49 | P-008-102, San Diego, \$9.99 |
| N-002-001, Dixie, \$32.70 | O-002-999, 7Up Bottling Co Cokato MN (EX), \$16.05 | P-008-105, Acme, \$28.61 |
| N-002-001, Dixie, \$9.50 | O-002-999, Coca-Cola, \$34.99 | P-008-223, Miller, \$59.96 |
| N-002-001, Dixie, \$11.01 | O-002-999, Coca-Cola (EX), \$86.00 | P-008-228, Globe, \$16.49 |
| N-002-001, Dixie, \$21.41 | O-002-999, Coca-Cola (Good), \$31.00 | P-009-002, Winona, \$34.00 |
| N-002-001, Dixie, \$12.52 | O-002-999, Nesbitts (EX), \$38.00 | P-009-015, Lutz, \$20.50 |
| N-002-001, Dixie, \$18.45 | O-002-999, Orange Crush (EX), \$76.00 | P-009-027, Virginia, \$46.87 |
| N-002-001, Dixie, \$15.50 | O-002-999, Pepsi=Cola (EX), \$79.87 | P-013-001, Schlitz, \$180.50 |
| N-002-001, Dixie (EX), \$19.99 | O-002-999, Pepsi=Cola Tulse OK (EX), \$32.00 | P-014-007, Griesedieck Bros (EX), \$38.50 |
| N-002-001, Dixie (EX), \$27.59 | O-004-009, Stag (MIB), \$16.00 | P-014-007, Griesedieck Bros (EX), \$75.00 |
| N-002-001, Dixie (EX), \$27.99 | O-004-009, Stag (MIB), \$16.00 | P-014-8UL, Schlitz / Howard Beverage Savan- nah GA, \$20.00 |
| N-002-001, Dixie (EX), \$27.99 | O-004-009, Stag (MIB), \$16.00 | P-014-999, Nehi Par-T-Pak (EX), \$21.59 |
| N-002-001, Dixie (EX), \$32.42 | O-004-009, Stag (MIB), \$16.00 | P-019-8UL, Lembeck & Betz Beer (Fair), \$19.99 |
| N-002-001, Dixie (EX), \$33.50 | | |

“Opener and eBay Trivia” (“BIN” Buy-It-Now & “DNMR” Did Not Meet Reserve)

- P-019-999, Hymans Saloon Palestine TX, \$124.84
- P-019-999, Petts Bald Eagle Whiskey (Pic of Eagle), \$31.00
- P-024-011, Narragansett, \$35.99
- P-025-003, A-B 1952 MIB, \$246.03
- P-025-003, Adolphus-Busch (EX), \$199.99
- P-025-003, Anheuser-Busch (N Kastor Ohligs), \$133.51
- P-025-003, Anheuser-Busch (Stainless) (EX), \$190.50
- P-025-999, Glasner & Barzen Diplomat Whiskey (Broken Handle), \$170.50
- P-026-003, Anheuser-Busch (Ohligs), \$190.50
- P-026-010, Anheuser-Busch (Bone) (DNMR), \$382.00
- P-026-011, Anheuser-Busch (Steel Handles) (Fair), \$110.99
- P-026-012, A-B (Red & Blue Handles), \$334.00
- P-026-014, Anheuser-Busch (Pearl Handles) (Good), \$191.38
- P-026-999, (Blank) W R Case Knife, \$450.00
- P-036-002, Metz (EX), \$38.08
- P-036-002, Metz (EX), \$24.00
- P-038-001, Anheuser-Busch (Refurbished), \$491.00
- P-038-001, Anheuser-Busch (Replaced Blade), \$433.75
- P-044-001, Bartholomay, \$51.00
- P-051-033, Neef Bros (EX), \$33.95
- P-064-999, (Blank) Champion Bar Mount, \$203.50
- P-082-004, Dallas, \$30.95
- P-085-002, Cresson Springs (Case Split), \$27.00
- P-109-999, Vaughan Dainty, \$47.00
- P-132-001, Germania, \$113.68
- P-158-001, Anheuser-Busch (Cracked Pearl Handles), \$87.00
- P-158-001, Anheuser-Busch (Fair), \$28.00
- P-165-001, Sebewaing, \$224.72
- P-503-999, Clicquot Club (Copper), \$53.78
- R-002-001, Iroquois, \$12.08
- R-003-002, Iroquois, \$26.98
- R-005-001, Schlitz, \$28.99
- R-007-001, Hauenstein (5 Examples) (EX), \$322.00
- R-014-999, Coca-Cola Overland & Willys-Knight Cars Kissimmee FL, \$184.50
- R-027-001, Budweiser (MIB), \$31.00
- R-028-001, Michelob (EX), \$22.49
- R-065-001, Miller (EX), \$6.10
- R-074-001, Adams (Mint), \$7.50
- R-074-001, Adams (Mint), \$6.50
- R-074-001, Adams (Mint), \$7.95
- Z-Can-Opener, 1915 Panama Pacific Multi-Tool, \$78.77
- Z-Corkscrew, Argentine 20thC Aluminum Corkpuller w/ Case, \$610.00
- Z-Corkscrew, Canadian Draco Molson, \$40.11
- Z-Corkscrew, Dutch 18thC Silver Sheathed (DNMR), \$1,260.00
- Z-Corkscrew, English 19thC 8-Tool Folding Bow, \$317.00
- Z-Corkscrew, English 19thC Hipkins & Sons (T-Wood w/ Button), \$347.03
- Z-Corkscrew, English 19thC King's 4-Post Mechanical, \$702.73
- Z-Corkscrew, English 19thC King's Mechanical w/ Ivory T-Handle, \$503.24
- Z-Corkscrew, English 19thC Thomason Patent (w/ Grapes & Vines), \$1,875.00
- Z-Corkscrew, French 1871 Delavigne Patent Single Lever, \$1,302.99
- Z-Corkscrew, French 1905 Rousseau Patent, \$224.72
- Z-Corkscrew, French 19thC Folding Clamshell, \$271.01
- Z-Corkscrew, French 19thC Le Presto Depose, \$227.50
- Z-Corkscrew, German 19thC 2" T-Frame w/ Cage, \$159.10
- Z-Corkscrew, German 19thC Celluloid Folding Lady, \$338.33
- Z-Corkscrew, German 19thC Celluloid Mermaid, \$965.99
- Z-Corkscrew, German 19thC Folding Straight Ladies Legs, \$2,063.00
- Z-Corkscrew, German 19thC Metal Mermaid Waiter's Friend, \$799.07
- Z-Corkscrew, German 19thC Mother-Of-Pearl Folding Ladies Legs, \$1,125.00
- Z-Corkscrew, German 19thC Wing Nut Lever Patent 815197, \$2,247.00
- Z-Corkscrew, German 20thC Trumpf T-Handle w/ Sliding Frame, \$2,275.00
- Z-Corkscrew, US 1876 Williamson Power Cone, \$325.00
- Z-Corkscrew, US 1876 Williamson Power Cone, \$491.92
- Z-Corkscrew, US 1878 Tucker Patent (BIN), \$600.00
- Z-Corkscrew, US 1883 Strait Patent Wood-T, \$676.66
- Z-Corkscrew, US 1884 Curley Metal-T Handle Patent, \$1,006.00
- Z-Corkscrew, US 1892 Columbus Figural Man Chicago WFs (BIN), \$350.00
- Z-Corkscrew, US 1895 Morgan Patent Bar Mount Burley & Co Wine, \$255.00
- Z-Corkscrew, US 1917 Brady U-Neek Patent, \$1,076.00
- Z-Corkscrew, US 1925 Flint Patent Peg & Worm, \$86.67
- Z-Corkscrew, US 1932 Bridgewater Coffin Patent, \$255.69
- Z-Corkscrew, US 1938 Smythe "Hootch-Owl" Patent, \$2,101.00
- Z-Corkscrew, US 19thC Hicks & Reynolds Wood-T Handle, \$152.50
- Z-Corkscrew, US 19thC Jansen Patent, \$152.49
- Z-Corkscrew, US 19thC Metal T-Handle Mechanical (Not Marked), \$599.98
- Z-Corkscrew, US 19thC Metal T-Handle w/ Spike Gundlach San Francisco, \$250.00
- Z-Corkscrew, US 19thC Sterling Silver Prong Corkpuller, \$203.61
- Z-Corkscrew, US 19thC Will & Finck Wood T-Handle, \$481.13
- Z-Corkscrew, US 19thC Williamson Lead T-Handle, \$218.49
- Z-Corkscrew, US 20thC Blackington Sterling Gold Bag, \$163.50
- Z-Corkscrew, US 20thC Syroco Golden Knight, \$1,259.00
- Z-Corkscrew, US 20thC Syroco Indian, \$698.00
- Z-Corkscrew, US 20thC Syroco Monk, \$338.00
- Z-Corkscrew, US 20thC Syroco Waiter, \$42.04

M-025 Cartridge Corkscrew Ad

**WILLIAMSON'S AMERICAN
CARTRIDGE CORKSCREW, No. 080**
(PATENTED)



Full Nickel Plate
Crucible Steel
Temper Warranted
Quick Sellers at 25 cts. each

"Neat and Compact for the Pocket",
A good 100 per cent Profit

Order a box containing 2 dozen from your jobber, or we will mail a Sample Card on receipt of \$1.35

**WILLIAMSON CO.,
NEWARK, N. J.**

Cartridge Cork Screw

or...
"Dewey's Slug"

**GOLD PLATED BODY
NICKEL PLATED TIP**



**CRUCIBLE
STEEL
SCREW...
TEMPER
WARRANTED**

No. 80, 1 Doz. in a box . . . \$2.00 net
No. 080, 1 Doz. on a card . . . \$2.00 net

Williamson Wire Novelty Co.
Camp and Mulberry Sts., NEWARK, N. J.

“Opener and eBay Trivia” (“BIN” Buy-It-Now & “DNMR” Did Not Meet Reserve)



A B-1-UL sent in by one of our members. “Westmoreland B’W’G Co Purity Beer Sutersville, Pa. (Gold Top on Top Logo)”



A B-5-UL that is in the Fixed Price List in this issue. “Giller’s Tonic A Liquid Food Popel-Giller Co. Warsaw, Ill.”



O-2-UL that Bob Stahly added to his collection. “The National Brewing Co. Baltimore, Md. National Premium Beer “The True Pilsener” (Mr.Pilsener under Man Logo)”



Ben Hoffman, “Mr C”, now owns this C-24-4 Neuweiler after we completed a trade. Ben wondered how many times he may have seen this but always thought it was a C-20 Neuweiler (C-24 has a Flat Bottom). So don’t assume, pick it up and check as the C-24 is a “Rare One” to find.



Another C from Ben’s collection, a C-29-2 Gold Bond. It was one of the “missing styles” when Don Bull and I wrote the Just For Openers color book in 1998. It’s the first time I actually had seen a beer C-29.



(Left) Jeb Burruss’s A-19-4 Lone Star “Alamo” Beer Alligator opener. The only one known.

JFO & Other Clubs/Conventions (Newsletter Name in Italics)

American Breweriana Association (ABA): *American Breweriana Journal* (bi-monthly) on breweriana collecting. Dues \$25.00/year. ABA, PO Box 595767, Fort Gratiot MI 48059-5767

2010 Jun 8-12 – 29th Annual ABA Convention – Holiday Inn & Suites Bloomington MN – ABA Members Only (Saturday Public Show). Contact Jean Tiegs, E-Mail jtiegs@americanbreweriana.org

Brewery Collectibles Club of America (BCCA): *Beer Cans & Brewery Collectibles* (bi-monthly) on breweriana collecting with emphasis on Cans. Dues \$35.00/year (Add Initiation Fee of \$3). BCCA, 747 Merus Ct, Fenton MO 63026-2092

2010 Sep 8-Sep 11 – BCCA Convention 40 – TBA Valley Forge PA – BCCA Members Only. Contact Dave Gausepohl, Email beerdave@fusenet.

Canadian Brewerianist: *The Canadian Brewerianist* (10/year) on Canadian breweriana collecting. Dues \$25.00/year (US Funds). Loren Newman, 2978 Lakeview Trail, Bright's Grove, Ontario, CANADA, N0N 1C0

2010 Aug 11-14 ??? – Canadian Brewerianist Annual Convention – TBA Kitchener-Waterloo Ontario – All Breweriana Collectors Welcomed. Contact Larry Sherk, E-Mail larrysherk@hotmail.com, (416) 465-3386

Canadian Corkscrew Collectors Club (CCCC): *The Quarterly Worme* (quarterly) on corkscrew collecting. Dues \$48.00/year. Milt Becker, One Madison Street 5B, East Rutherford NJ 07073 (Make Check Payable to the Full Club Name)

East Coast Breweriana Association (ECBA): *The Keg* (quarterly) on breweriana collecting. Dues \$32.00/year. ECBA, PO Box 1392, Doylestown PA 18901

2010 Jul 14-17 – 38th Annual ECBA Convention – Radison Hotel Rochester NY – ECBA Members Only (Saturday Public Show). Contact Larry Handy, E-Mail ohhugo1@aol.com

Figural Bottle Opener Club (FBOC): *The Opener* (quarterly) on cast iron openers. Dues \$30.00/year. Stephen J. Greenberg, c/o Duane Morris LLP, 30 South 17th St, Philadelphia PA 19103-4196

Annual FBOC Convention Reading PA (June of Each Year). Contact Sandra Emme, E-Mail emmyaward@yahoo.com

Just For Openers (JFO): *Just For Openers* (quarterly) on all areas of opener collecting (with an auction each issue). Dues \$20.00/year or FREE on the Internet (www.just-for-openers.org). John Stanley, PO Box 64, Chapel Hill NC 27514-0064

2010 Apr 14-18 – 32nd Annual Just For Openers Convention – La Quinta Inn & Suites (Blum St) San Antonio TX – All Opener / Corkscrew / Breweriana Collectors Welcomed. Contact John Stanley, E-Mail jfo@mindspring.com

National Association Breweriana Advertising (NABA): *The Breweriana Collector* (quarterly) on breweriana collecting. Dues \$25.00/year. NABA, PO Box 64, Chapel Hill NC 27514-0064

2010 Aug 5-8 – 39th Annual NABA Convention – Holiday Inn Convention Center Stevens Point WI – NABA Members Only (Saturday Public Show). Contact John Stanley, E-Mail naba@mindspring.com

SHOWS (Good Sources for Openers & Corkscrews)

2010 Feb 10-14 – 31st Annual Blue & Gray Breweriana Show – Ramada Inn Holidrome Fredricksburg VA – All JFO Members Welcomed. Contact: John Fisher, PO Box 953, Benedict MD 20612-0953, (301) 274-3340

2010 Mar 14 – Annual Spring Breweriana & Beer Can Show – German American Society Hall 3717 S 120th St Omaha NE – 9AM to 3PM (8' Tables \$22 Each). Hospitality Room (Sat Evening Comfort Inn 107th & L Sts). Contact John Mlady (402) 345-7909

2010 Sep 9-11 – 28th Annual Midwest Breweriana Show – Mid America Center Council Bluffs IA – JFO Members Welcomed. Contact John Mlady (402) 345-7909 or Bill Baburek, (888) 569-7924 E-Mail bjbaburek@cox.net

WANTED (Want & Sale Ads are FREE!!!!)

B-2s #21 Fresno Local, #22 Haenle, #37 Flecks, #39 R. I. B., #40 Anheuser. Bill Arber, 11162 Broadway St, Alden NY 14004-9515, (716) 681-4833, Email wrabra@aol.com

NEBRASKA OPENERS: Any with Nebraska towns or names & Esp Jetter Beer openers. Dick Schroeder, 3857 Calvalry Hills Dr, North Platte

NE 69101, (308) 532-5597. Email dbschrod@charter.net

Wisconsin Brewery Openers: Knapstein, Hortonville, Princeton, Hochgreve, Bleser, Shawano & Rahr; esp A-17-27 Rahr. Dan Mayville, E7446 County Road H, Fremont WI 54940-9747

Yuengling G-35-16 Blue on Yellow; 2 different Yuengling C-49s; Yuengling G-28-4 Red on Silver; Yuengling Q-67-3; Rolling Rock C-49-50 (from Latrobe); any new Pittsburgh Brewing Co. openers. Will trade or buy. Have a list of several local soda and beer openers to trade or sell in the \$1 – \$20 range. John Fisher PO Box 953 Mechanicsville, MD 20659-0953, Email burntwoods@verizon.net

L-1 Openers Wanted! Looking for both Beer or Consumer product advertising. Also looking for M1, M2, M3, M73, and Syroco Openers / Corkscrews. Tommy Campnell 10908 NE Bill Point Ct Bainbridge Island, WA 98110, (206) 612-7239, Email tommy.campnell@gmail.com

Unusual Can Opener/Corkscrew on eBay \$79.



WANTED (Want & Sale Ads are FREE!!!!)

Golden Glow Openers: A-1-9, B-23-149, E-14-787 & A-12-12 Grace Bros. Rainier Openers: B-3-5, B-19-135, B-21-130, E-9-80, F-21-2, N-11-5 & 15, P-19-7, P-53-6, P-54-18. P-85s: 3,4,5,11,14. Also any Brew-eriana from Rainier (Seattle WA, LA CA, SF CA), Golden West (Oakland CA) & Port Townsend (WA). Buy/Trade. John Cartwright, 1548 Via Ar-royo, Paso Robles CA 93446, (805) 712-6836

A-3-19 Stone Malt Akron. Great Trades or Buy. Jeb Burruss, 318 Lost Oak Dr, Canyon Lake TX 78133, (830) 899-7241

A-9s: 26 Penn, 46 Tivoli, 29 Waldorf, B-9-2 Salinas, B-9-10 Ambrosia, B-22 (Beer), B-31-11 Bellingham Bay, B-31-12 Salem, C-21-6 Grand Rapids, D-16-1 New Kentucky, G-1s: 31 Griesedeck Bros, 68 Glen-non, 69 Leidiger 3-V Bev, G-5s: 2,18,22,23,28,29,33,39,40,45,46, 48,50,51,52, H-1s: 8,12,21,26,27,35,39,42,51, O-1-2 Leidigers, O-1-6 Walters, O-4 Beer & Soda, O-4 Orange Crush, O-8 & O-19 & O-22 & O-23 Beer & Soda, O-505 Saegertown John Stanley, PO Box 64, Chapel Hill NC 27514, (919) 419-1546, Email jfo@mindspring.com

A-17 "Wilber Brewery" & P-8 Corkscrew "Omaha Brewing Associa-tion" (EX Condition Only). Will purchase outright. John Mlady, 1506 S 25th St, Omaha NE 68105-2611, (402) 345-7909

Openers with the word Saloon, Mexican A, B & D style Openers. Great Trades Available. Jack Ford, 5351 Boyd Ave, Oakland CA 94618, (510) 655-5393

A-43-Dixie Beer. Marc Benjamin, 167 Nixon Beach Rd, Edenton NC 27932, (919) 482-2099

B-24-95 Flecks Beverages. Al Fleckenstein, 2445 NW Raleigh St, Port-land OR 97210, (503) 223-0123, Email flecks@spiritone.com

B-45, B-66, I-7, P-72, P-100, R-14 types with a Corkscrew (Beer/Non-Beer) & Silver Top Beer Openers. Herb Danziger, 550 Cherry Ct, Bir-mingham MI 48009-1459, (810) 646-9470

B-57, B-58, B-62, B-73, Q-10. Cash/Trade. Ben Hoffman, 213 Simmons Rd, Perkiomenville PA 18704, (610) 287-8243 or Email benbey@netcarrier.com

Bond and Lillard Openers (would like to buy). Have A-29, would like any others. Lillard is a family name. George Love, 4301 Forest Plaza Dr, Hixson TN 37343, (423) 877-6006

C-39, D-12, D-24, E-22, M-52, M-68, M-103, O-511, all types. Will buy or trade. Mark Woodard, 1126 Riverboat Court, Annapolis MD 21409, (443) 756-2815, Email mark.woodard@nasa.gov

E-14-835 Yuengling, C-49-21 Coors Original, C-49-33 Moose, Buy or Trade. Harold Queen, 1001 Centre Ave, Jim Thorpe PA 18229, (717) 325-2612, Email haqueen@ptd.net

"E"s! Have Trade List (All Types) or Will Buy. Top 12 List: E-14-832 Uneeda, E-7-77 Lima, E-2-21 Park, E-3-30 Derby, E-4-207 Yosemite, E-4-244 Sequoia, E-4-245/300 Trainer, E-16-11 Ganser, E-17-9 Everett, E-17-7 I S D, E-6-213 Kips Bay. Larry Moter, 10149 Michaels Rd, Wood-ford VA 22580, (804) 448-3928 E-Mail accneca@aol.com

"I"s to Complete my collection. Please send me a list of your extra "I"s w/ prices. I will respond! Tom Gormally, 22555 Cardiff Dr, Santa Clarita CA 91350, (661) 291-1392, Email tomphyllis@ca.rr.com

I-7s Beer or Non-Beer. Hale Milano, 506 Springhouse Rd, Camp Hill PA 17011-1454, (717) 737-5067

I-7s Beer Openers #45 A-B Malt, #46 Berghoff, #63 Diamond State, #64 Edel Brau, #50B Falls City, #84 Lion, #78 Malt Diastase, #30 New Globe: Will Pay Absolute Top \$\$\$ (Have I-7-57 Regal for Trade). Joe Todd, 5727 Bardsey Ct, Matthews NC 28104-0645, (704) 957-1658 Email Joseph.Todd@Protech-International.com

Atlas Prager Openers: A-21-46, A-21-69, B-24-58, B-24-103, B-28-2, E-5-70, E-7-1, E-8-32, E-14-755, E-14-657, E-14-719, F-4-36, H-2-166, N-10-6, N-10-7, O-8-3, O-8-17, P-66-4. Dave Lendy, 1927 Allen Dr, Geneva IL 60134, (630) 208-6950, Email dlendy@mac.com

Bottle Shaped and/or Openers with Bottle on them. Gary Deachman, PO Box 438, North Woodstock NH 03262, (603) 745-2347

Chester PA Openers: B-18-192 Peerless, B-21-557 Haser, C-12-71 Chester, P-7-46 Stoeckle, and A-17-14 & A-43-3 Soda Openers with ad for "Penn Brand". Joseph Knapp, 211-A Berbro Ave, Upper Darby PA 19082, (610) 352-5055

Cigar Box Openers (CBOs), Any Unusual, Write with Details: Ken Hoesch, PO Box 299, Zeeland MI 49464-0299

Corkscrews-Cork Pullers-Syroco (esp Golden Knight & Clown)-Early US Patents-Anything Unusual. Have Corkscrews to Trade or Buy. Please send description to Paul Luchsinger, 2815 King Rook Ct, Williams-burg VA 23185, (757) 345-3984, Email paulcork@cox.net

Corkscrews & Tin Can Openers: Beer Openers for Trade. Joe Young, 36 S Weston Ave, Elgin IL (847) 695-0108

Corkscrews & Postcards depicting Corkscrews. Please send descrip-tion, photo, sketch, photocopy, or tracing of what you have and advise price wanted. Don Bull, PO Box 596, Wirtz VA 24184, (540) 721-1128, E-Mail corkscrew@bullworks.net

Figural Corkscrews and any WASHINGTON D.C. Openers and/or Corkscrews. Sandra Emme, PO Box 1454, Upper Marlboro MD 20773, (301) 627-8207

Hartford, Connecticut Openers & Breweriana Wanted, esp. E-8-61 Fischer & P-17-4 Columbia. Also general CT and New England Beer Openers. Edward Johnson, 1300 Poquonock Ave, Windsor CT 06095, Email johnsoned1777@hotmail.com

Jamestown Brewing, Kuhn's Beer, Chautauqua Brew, Monessen PA, Independent Brewing, Schaefer, & all Cleveland Beers. Ed Schaefer, PO Box 149, Maple Springs NY 14756, Email eschaeferbeer@juno.com

Joliet IL Openers: Citizens: B-14-97, C-17-69, E-1-32, E-3-12, E-4-175, K-5-6, O-10-1, P-121-1, Porter: A-17-24, B-18-594,618, B-21-199, F-6-9, Sehrings: B-21-561, G-9-39. John Bitterman, Email jebitter@aol.com

Minnesota Openers: A-1-73 Royal Bohemian, A-21-77 Otto, A-21-63 Schatz-Brau, A-21-109 City Club, A-21-128 Hamm's, B-7-3 Hauen-stein, B-7-22 Schells, B-13-2 Grain Belt, B-18-355,391 Fitger, B-18-465 Lakeside, B-18-620 Schell, B-18-75 Standard, B-19-174 Fergus, B-19-49 Hajicek, B-21-222 Bierbauer, B-21-322 Blass, B-21-350 Jordan, B-21-467 Hauenstein, B-23-167 Town Club, B-41-2 Midwest Brewing Simon's Special-Otto's Own. Pat Stambaugh, 718 S Lakeshore Dr, Lake City MN 55401, Email p.stam@mchsi.com

Montana & Idaho Beer/Brewery Openers & Breweriana. Also H-8 & L-1 Openers to complete collection. Steve Armstrong, PO Box 741, Kamiah ID 83536, Email sunset@cybrquest.com

New York Openers: E-4-345 Koch, G-1-67 Hupfel. Will Buy/Trade. Mark Barren, 6141 Tachi Dr., Newfane NY 14108-9517, (716) 778-9724

Pinney Beverage Items Wanted: Pens & Pencils, Bottle & Can Openers, Any item imprinted with Pinney Beverage Company, Salt Lake City, Utah. Dave Pinney, 1766 Red Barn Road, Encinitas CA 92024, (760) 753-8151, Email davecent@att.net

Schlitz Openers: A-20-52,35,51, A-21-58,8,79, A-23-7, A-35-30,45. Buy or possibly Trade. Mike Krejci, W19103 Lake St, Aniwa WI 54408, (715) 449-3523, Email pigpen1952@juno.com

SELLING (Want & Sale Ads are FREE!!!!)

Beautifully Displayed Collection of over 1,000 Openers, Can Openers and Corkscrews on 60+ Boards. Over 20 years of collecting and cleaning. Interested parties contact: Dick Britton, 2902 Lacota Rd, Waterford MI 48328-3127, (248) 683-2134.

"American Breweries II": by Dale Van Wieren. **Over 18,000 entries for nearly 8,000 brewing firms, tracing names, addresses, and dates of operation.** (\$20 Includes Priority Mail Shipping-U.S.). John Stanley, PO Box 64, Chapel Hill NC 27514

2009 Handbook of United States Beer Advertising Openers and Corkscrews (contains 17,000 Listings & pictures 1200 Types (Black & White Copies)) . Print from the JFO website at www.just-for-openers.org

2005 Inventory of Canadian Beer Advertising Openers & Corkscrews (contains 2,000 Listings & drawings for 250 Types (Note: Out-Of-Print 2007)) . \$24 US sent book rate. George Vine, 219 Murray, Greenfield Park, Quebec, Canada J4V 1N5

"Just For Openers" "A Guide to Beer, Soda, & Other Openers" by Donald A. Bull & John R. Stanley, 160 Pages, 380 Color Pictures, \$26.95 plus \$4.80 shipping (US Only). Bullworks, PO Box 596, Wirtz VA 24184

"Soda Advertising Openers" by Donald A. Bull & John R. Stanley, 160 Pages, Over 275 Color Pictures & 2500 Listings, \$26.95 plus \$5.00 shipping (US Only). Bullworks, PO Box 596, Wirtz VA 24184

"Beer Advertising: Knives, Letter Openers, Ice Picks, Cigar Cutters and More" by Donald A. Bull, 180 Pages, Over 500 Color Pictures, \$26.95 plus \$5.00 shipping (US Only). Bullworks, PO Box 596, Wirtz VA 24184

"The Ultimate Corkscrew Book" by Donald A. Bull, Hardcover Book Weighs 5 Lbs, 744 Color Photographs, 3746 Corkscrews with Values, \$75.00 plus \$10.00 shipping (US Only). Bullworks, PO Box 596, Wirtz VA 24184

"Bull's Pocket Guide to Corkscrews" by Donald A. Bull, 190 Pages, Over 200 Color Photographs, 942 Corkscrews with Values, \$18.00 plus \$5.00 shipping (US Only). Bullworks, PO Box 596, Wirtz VA 24184

"Boxes Full of Corkscrews" by Donald A. Bull, 236 Pages, Over 836 Color Photographs, 95% New Information with Values, \$47.95 plus \$10.00 shipping (US Only). Bullworks, PO Box 596, Wirtz VA 24184

"Figural Corkscrews" by Donald A. Bull, 288 Pages, Over 950 Color Photographs, Hardbound Book Weighs 4 Pounds, \$79.95 plus \$10.35 shipping (US Only). Bullworks, PO Box 596, Wirtz VA 24184 (Just Released July 2009)

"ANRI Woodcarvings: Bottle Stoppers, Corkscrews, Nutcrackers, Toothpick Holders, Smoking Accessories and More" by Philly Rains and Donald A. Bull, 272 Pages, Over 800 Color Photographs picturing more than 2500 ANRI Carvings with detailed information, \$62.95 plus \$10.00 shipping (US Only). Bullworks, PO Box 596, Wirtz VA 24184

"Hometown Beer - A History of Kansas City's Breweries" by H James Maxwell & Bob Sullivan Jr, Hardback w/ 300 Pages, 585 Pictures (352 Color), \$39.95 Postpaid (US). H. James Maxwell, 1050 West Blue Ridge Blvd, Kansas City MO 64145-1216

"Figural Bottle Openers Identification Guide" by FBOC Club, 148 Pages, 67 Color Pages, with Rarity Guide, \$20.00 plus \$5.00 priority mail shipping (US Only) (Note: Out-Of-Print 2008). Lyle Moreland, 864 Jeanette Ave, Baltimore MD 21222

"The History of The Can Opener" by Alfred Wood, Celebrating 150 Years of Can Openers, 94 Pages with over 100 Pictures, \$30.00 (Color). Al Wood, 710 N. Lafayette St, Florissant MO 63031

Fixed Price List (Next Page):

Please check over and contact me if you are interested in any of the items listed. After two weeks I will listen to offers. It doesn't hurt to ask. Email or call if you have any questions. Items sold from the last issue are shown in the first column with the prices they sold for. You can make offers on anything that is left on that list. Don't be shy, just make an offer.



One of the "Rare" Coca-Cola bottle openers, a M-3 "slider", one of three known. Sold for \$525.15 this past quarter on eBay. Just a plain design, not fancy.

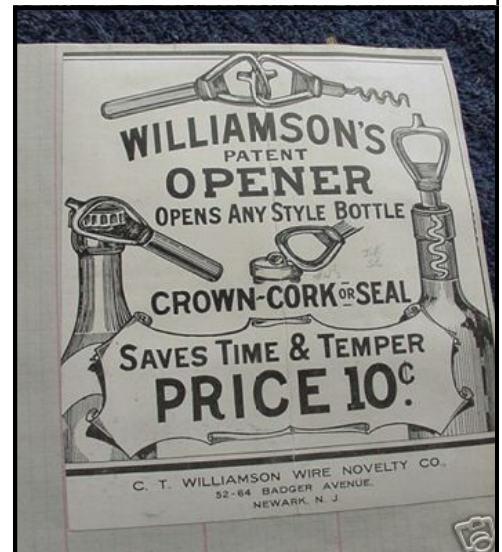
JOHN STANLEY FIXED PRICE LIST

Results from July List
Realized Prices Shown

- A-004-006, Crockery City, \$100.00
 - A-004-054, Continental, \$100.00
 - A-017-042, Columbia, \$175.00
 - A-018-001, Century, \$100.00
 - A-021-030, Potosi, \$25.00
 - A-021-084, High Life, \$40.00
 - A-028-005, Bay City, \$125.00
 - A-028-006, Centennial, \$100.00
 - A-028-008, Biewer, \$125.00
 - A-035-025, Budweiser, \$125.00
 - A-035-030, Schlitz, \$100.00
 - A-035-046, Chattanooga, \$100.00
 - A-037-001, Hand, \$500.00
 - A-043-004, Lexington, \$400.00
 - B-005-050, Howell & King, \$50.00
 - B-024-056, Salem, \$10.00
 - B-024-076, Blue & Gold, \$40.00
 - B-024-096, Grand Prize, \$40.00
 - C-001-006, Bismarck, \$200.00
 - N-022-001, Enterprize, \$60.00
 - N-022-004, Iroquois, \$150.00
 - N-022-007, Gold Seal Malt, \$20.00
 - N-022-008, Fort Pitt, \$40.00
 - N-022-009, Frederick, \$75.00
 - N-029-004, Arrow, \$0.00
 - N-029-014, Budweiser, \$25.00
 - N-029-020, Pabst, \$60.00
 - N-029-025, Country Club, \$50.00
 - N-043-999, Coca-Cola, \$150.00
 - N-043-999, Coca-Cola, \$150.00
 - N-044-001, Inland, \$500.00
 - N-059-001, National Malt, \$65.00
 - N-071-001, Grain Belt, \$50.00
 - O-005-020, Grand Prize, \$250.00
 - P-025-001, Bergner & Engel, \$300.00
 - P-026-001, American, \$400.00
 - P-026-003, Dick & Bros, \$300.00
 - P-026-006, Neef Bros, \$250.00
 - P-026-007, Dick & Bros, \$275.00
 - P-029-001, Indianapolis, \$125.00
 - P-039-001, Falk, \$100.00
 - P-039-8UL, Bergner & Engel, \$150.00
 - P-048-001, Mathie, \$125.00
 - P-069-001, Pfeiffer, \$350.00
 - P-096-001, Gutsch, \$200.00
 - P-101-001, Hauck, \$150.00
 - P-102-001, Indianapolis, \$125.00
 - P-120-001, Schade, \$350.00
 - P-120-003, Buffalo, \$100.00
 - P-148-001, Lion, \$200.00
 - P-149-002, Bergner & Engel, \$150.00
 - P-159-001, Pabst, \$600.00
 - P-175-002, Bozeman, \$260.00
- JUST FOR OPENERS FIXED PRICE LIST**
Email jfo@mindspring.com
or Call 919-824-3046
- B-005-UL Popel-Giller Co Giller's Tonic A
Liquid Food Warsaw IL, 6, \$80.00
 - B-015-002, Zangs, 6, \$20.00
 - B-015-004, Huebner, 8, \$25.00
 - B-015-019, American, 6, \$30.00
 - B-016-002, Haberle, 6, \$30.00
 - B-016-004, Haberle, 8, \$30.00
 - B-017-001, Buffalo, 8, \$40.00
 - B-017-003, Pfeiffer, 4, \$50.00
 - B-017-008, Walter, 6, \$50.00
 - B-017-011, Moerlein, 6, \$35.00
 - B-017-012, Stroh, 8, \$40.00
 - B-017-015, Home, 6, \$40.00
 - B-018-047, Michel, 8, \$25.00

- B-018-133, Capital, 6, \$30.00
- B-018-193, Imperial Pilsener, 6, \$40.00
- B-018-342, Raspiller, 6, \$40.00
- B-018-459, Port Huron, 4, \$40.00
- B-018-574, Buob, 10, \$40.00
- B-018-608, Amsdell, 6, \$40.00
- B-018-646, Kamm & Schellinger, 8, \$30.00
- B-018-715, Lexington / Union Bottling Co
(TN), 6, \$50.00
- B-019-068, Moerschel, 4, \$25.00
- B-021-044, Kalamazoo, 6, \$40.00
- B-021-057, Narragansett, 10, \$15.00
- B-021-075, Scheidt, 6, \$10.00
- B-021-216, Valley Brew, 8, \$25.00
- B-021-313, Virginia, 4, \$40.00
- B-021-423, Hastings, 6, \$25.00
- B-021-430, Old Colony, 6, \$25.00
- B-022-141, Gold Bond, 6, \$25.00
- B-023-183, Howell & King, 8, \$25.00
- B-031-005, Kuebler, 8, \$40.00
- B-031-007, Billings, 6, \$125.00
- B-035-010, Milt-Malt Co, 8, \$15.00
- B-038-003, Victory Malt, 6, \$15.00
- B-038-004, Star, 6, \$15.00
- B-038-006, Mound City, 6, \$20.00
- B-038-013, Blue Ribbon Malt, 6, \$20.00
- B-042-011, Kern, 4, \$40.00
- B-043-001, Bohemian, 4, \$125.00
- B-043-002, Kalispell, 6, \$125.00
- C-002-001, Phoenix, 10, \$40.00
- C-002-003, Hutchinson Crowns, 8, \$40.00
- C-002-004, Independent, 6, \$75.00
- C-025-001, King, 6, \$25.00
- D-501-999, Hebe Ginger Ale, 6, \$50.00
- E-003-057, Auto City, 6, \$35.00
- E-005-078, Matz, 8, \$10.00
- E-005-136, Schlitz, 6, \$15.00
- E-006-037, Mitchell, 4, \$5.00
- E-006-048, Southern Select, 6, \$5.00
- E-007-045, Virginia, 8, \$35.00
- E-014-116, Graham, 6, \$15.00
- E-014-249, San Antonio, 4, \$5.00
- E-014-251, San Antonio, 4, \$5.00
- E-014-265, Schutz & Hilgers, 8, \$30.00
- E-014-442, Southern, 6, \$5.00
- E-014-625, Mitchell, 8, \$5.00
- E-014-645, Tampa Florida, 8, \$5.00
- E-019-005, American, 6, \$45.00
- E-022-999, Vernor, 6, \$25.00
- F-004-020, Schlitz, 6, \$15.00
- F-007-014, Stag, 8, \$20.00
- F-007-016, Blatz, 6, \$20.00
- F-009-001, Cleveland & Sandusky, 6, \$25.00
- F-009-008, Gutsch, 8, \$25.00
- F-011-001, Cleveland & Sandusky, 6, \$40.00
- M-057-002, Wiedemann, 6, \$40.00
- M-058-001, Miller, 8, \$35.00
- M-063-001, Hamm, 8, \$40.00
- M-063-002, Sebawaing, 8, \$25.00
- M-063-004, Fehr, 8, \$20.00
- M-063-006, Schlitz C.V. Hudepohl Berghoff
Old Crown, 6, \$40.00
- M-064-003, Stag, 8, \$10.00
- M-064-004, Pabst, 8, \$10.00
- M-089-001, Budweiser, 4, \$25.00
- M-100-003, Pabst, 8, \$25.00
- M-120-001, Jax, 6, \$50.00
- M-120-999, Tenn Castings, 4, \$25.00
- N-001-001, Pabst, 10, \$60.00
- N-001-002, Walter, 10, \$60.00
- N-004-999, Souvenir of Florida, 8, \$20.00
- N-004-999, Souvenir of Los Angeles, 6,
\$20.00
- N-022-002, Fontenelle, 8, \$40.00

- N-022-003, Fox Deluxe, 8, \$40.00
- N-022-005, Lakeside, 8, \$60.00
- N-022-007, Gold Seal Malt, 4, \$25.00
- N-022-013, PIELS, 10, \$50.00
- N-026-001, Richbrau, 8, \$25.00
- N-026-002, Gettelman, 8, \$50.00
- N-027-001, Ballantine, 6, \$20.00
- N-027-004, Budweiser, 6, \$20.00
- N-027-004, Budweiser, 8, \$20.00
- N-027-005, Schlitz, 8, \$35.00
- N-027-008, Pearl, 8, \$20.00
- N-027-010, Lone Star, 6, \$30.00
- N-027-012, Falstaff, 8, \$30.00
- N-027-015, Jax, 6, \$35.00
- N-027-020, Busch Bavarian, 6, \$30.00
- N-027-024, Falstaff, 8, \$20.00
- N-046-001, Hamm, 8, \$45.00
- N-148-001, Arnholt & Schaefer, 6, \$30.00
- N-148-002, Consumers, 6, \$20.00
- N-148-003, Erie, 4, \$20.00
- N-148-004, Henning, 8, \$75.00
- N-148-005, Koppitz-Melchers, 6, \$20.00
- N-148-006, Pabst, 4, \$45.00
- N-148-007, Sioux City, 2, \$75.00
- N-148-008, St Marys, 4, \$30.00
- O-004-034, Mineral Spring, 6, \$40.00
- P-007-065, Anthracite, 6, \$50.00
- P-008-006, Blatz, 6, \$35.00
- P-008-052, Houston Ice, 8, \$45.00
- P-008-125, Tosetti, 8, \$100.00
- P-008-190, Schlitz, 8, \$40.00
- P-008-222, Hoster, 6, \$50.00
- P-008-225, Pabst, 6, \$60.00
- P-008-247, Pabst, 6, \$60.00
- P-009-002, Winona, 8, \$45.00
- P-010-003, Schlitz, 8, \$35.00
- P-010-012, Finlay, 8, \$75.00
- P-017-006, Parkersburg, 6, \$75.00
- P-017-008, Lion, 6, \$75.00
- P-042-001, Bartholomay, 6, \$45.00
- P-051-014, Keeley, 8, \$35.00
- P-051-032, Muessel, 10, \$75.00
- P-051-035, Seibold, 8, \$40.00
- P-057-024, Bunker Hill, 6, \$35.00
- P-057-031, Pabst, 6, \$60.00
- P-057-033, Van Nostrand, 6, \$40.00
- R-047-001, Rheingold, 6, \$40.00



Box of Williamson Sleeved Cork-screws w/ Loop Seal Remover.

JUST FOR OPENERS

32nd ANNUAL CONVENTION REGISTRATION APRIL 14-18, 2010

La Quinta Inn & Suites Convention Center
303 Blum St, San Antonio TX 78205
(I-37: exit Commerce St Right, Turn Right on Elm, Hotel Straight Ahead)
(Please Note: SELF PARKING - \$17.00 a night at this Hotel)
1-866-527-1498 or 1-210-222-9181 (Local) (Request Just For Openers to Get in Room Block)

(Rate is \$129.00 for a Single, Double, Triple or Quad)
(Rate Good for 3 Days Before and 3 Days After Convention)
(Hotel Cutoff Date is March 14th 2010)

(Tell them you are with the Just For Openers Group)
MAKE SAN ANTONIO TEXAS YOUR NEXT STOP ON THE JFO CONVENTION TRAIL

MEMBER REGISTRATION FEE - **\$40.00**
(MEMBER INCLUDES HOSPITALITY ROOM, CONVENTION OPENER & 1 SHOW TABLE)
(SATURDAY SHOW WILL BE IN SHINER TX, BUS WILL BE PROVIDED)
SPOUSE/PARTNER - **\$10.00 (Total Member & Spouse/Partner \$50)**
(SPOUSE/PARTNER INCLUDES USE OF HOSPITALITY ROOM) (NOTE:CHILDREN ARE FREE)

NAME/(SPOUSE/PARTNER) _____

ADDRESS _____

CITY _____ STATE(PROVINCE) _____ ZIP _____

EVENING PHONE NUMBER _____

DATE YOU WILL ARRIVE _____ APPROXIMATE TIME _____

DATE & TIME YOU WILL LEAVE _____ (NEED FOR PLANNING PURPOSES)

HOW WILL YOU ARRIVE? CAR ___ PLANE ___ TRAIN ___ OTHER _____

IF PLANE? AIRLINE _____ FLIGHT # _____ ETA _____

NAME(S) FOR CONVENTION BADGE(S): _____

HOSPITALITY ROOM DRINK Brands: Beer: _____ Soda/Water: _____

MAKE CHECKS PAYABLE TO John Stanley, Send Checks to:
JFO 32 PO Box 64 Chapel Hill NC 27514
Phone (919) 419-1546 or (919) 824-3046 (Cell)

***** **BRING A DISPLAY !!!** *****

“32nd Just For Openers Convention Registration (Page 2)”

Convention Wish List

List up to 10 Openers/Corkscrews,
Send in with Registration Form,

A master list will be in the March/April JFO

| | |
|-----------|-----------|
| 01) _____ | 06) _____ |
| 02) _____ | 07) _____ |
| 03) _____ | 08) _____ |
| 04) _____ | 09) _____ |
| 05) _____ | 10) _____ |

March to the 32nd JFO Convention Located in the City known for the Alamo

In April 2010

Come to the Collector's Den

Forget about all of the Winter Snow

Come enjoy sunny San Antonio!

The Riverwalk

Is all the Talk!

Once you are There

You can walk Everywhere!

The Spoetzi Brewery Saturday Show

Reminds me of the Lone Star motto, Go! Go! Go!

It's worth the cost of a Prime Location Room

The show will be a Big Boom!

Bring a Display is what I Say

So you can compete with Johnny Ray!

Tell the opener friends you Know

Remember the Alamo!