

Just For Openers Oct 2011 Issue #132

Copyright 2011
John Stanley
PO Box 51008 Durham NC 27717
(919) 824-3046
Web Site: www.just-for-openers.org

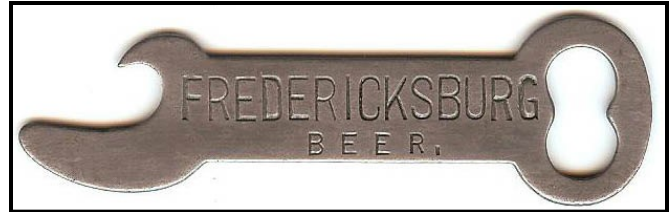
Past Editors
Don Bull (1979-83)
Ed Kaye (1984-88)
Art Santen (1989-1993)

Annual Dues \$20.00 or
View Free on the Web Site
Use PayPal at jfo@mindspring.com
Renewal Due Date: 12/31/2011
Opener & Corkscrew Books
(Details in Sale Ads & On Website)



B-18-633 Fredericksburg

From John Cartwright's collection a Nevada distributor's B-18. Not many breweries in Nevada, so they resort to selling a California beer.



Editor's Update

My sincere apologies for being so late with newsletters. Much of my time has been spent selling items from Art Santen and Don Sherman's collections. But more than anything my health problems have been an issue this fall and mainly I have been dealing with stomach problems. It nothing really bad but there have been a lot of days I do not feel like doing much of anything. I think the doctor has a handle on it and the solution is getting some good bacteria in my system so I can eat and keep my body from running down. Please be patient as I think I can get the JFO newsletters back on schedule the next few months.

2011 Unlisted Openers for the 2012 Handbook

Most everyone has sent their ULs for 2011 but if anyone has ULs they want to submit please do so by February 28th. The January 2012 JFO Newsletter will be near completion when I have everyone's ULs submitted.

—Please Note New JFO Mailing Address—

After a dismal holiday service for my Chapel Hill PO Box, I decided it was time to make a change. The Chapel Hill Post Office is closed on Saturdays and at times has only one worker. **New Address: PO Box 51008 Durham NC 27717.**

2012 JFO Convention #34 April 18-22 The Palms Las Vegas NV

As the holidays approach it is always time to think about the JFO Convention and trust me a lot of thought has gone into the convention. John Cartwright and I had tried to work out having a joint convention with the 49er Breweriana Club but the hotel was not receptive to making changes in the contract without some high additional costs. In the end I decided I could not sign a contract that required several thousand dollars to be committed for costs and those were mainly with the hospitality room, Saturday Show room and a large Friday Auction room.

The convention will just be our smaller JFO group but anyone is welcomed to come. We always have an open convention. Remember Ollie Hibbeler told me early on one of the best things about JFO was it had no rules (not many anyway). So come one, come all, but please try to make the Las Vegas JFO Convention. The Palms is a fabulous hotel and there is something for everyone to do in Las Vegas. The convention registration is the last two pages of this issue. Please email, call or write with any questions you have about the convention. The tentative convention schedule is on the last page. John Cartwright has worked very hard to make this a great event. **BE THERE!!!**

Members Update

It was one of the terrible emails I hate to receive when Boots Queen said that Harold passed away on December 13th at the age of 78. Harold had been in the hospital for heart and liver issues and then was sent home only to return and died due to heart complications. He was part of the Pennsylvania tandem along with Ben Hoffman. Harold attended many JFO Conventions and was an ardent collector of Pennsylvania openers, A-13 Car figurals, Sliders and anything that caught his eye. He was a long time Jim Thorpe, Pa. resident and was always on the lookout for advertising items from his home town. Our heartfelt condolences got to Boots. I will do a tribute to Harold's collecting in the next issue. (Right: Harold & Boots at the Detroit JFO Convention in 2009).



Spouse's Corner

By Pat Stanley, the Editor's Spouse

**John gets up at 4 AM
To check on all the eBay trends**

**Then he recaps it all for JFO
This process has been very slow**

**Newsletters starting getting late
When he had to handle his father's estate**

**Then a collector who's in the World Book of Guinness
Decided his collection had become quite a menace**

**When Art Santen gave him permission
Selling part of this collection became John's ambition**

**Catching up on publishing issues
Has made him cry into Kleenex tissues**

**Then Don Sherman decided to start thinning out
And they know John Stanley knows how to go about**

**Selling these collections promoted the hobby
As club members needing specific ones began to lobby**

**John spends hours preparing these collections for sale
So they look shiny when you receive them in the mail**

**John is a trustworthy guy
He is the apple of my eye**

**He will somehow issue all the newsletters
Then he will once again feel much better**

**So please be patient with him
And never let your opinion of him dim**

**Submitted by his wife who knows the hours he spends
When night and day begin to blend**

**But always dedicated to this wonderful club
Who collect openers from brew pubs**

New Discoveries to the 2011 Handbook

A-105 MINSTREL'S HAT AND HEAD
CAP LIFTER
MADE IN CHINA
5"

MIKE KREJCI/ART SANTEN
1. BUD LIGHT (LOGO)



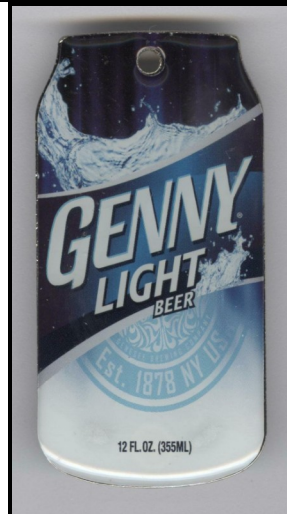
A-106 GUITAR
CAP LIFTER
MADE IN CHINA
3"

MIKE KREJCI/ART SANTEN
1. BUDWEISER (IN CROWN LOGO)



A-108 CAN
CAP LIFTER
2 5/8"

MIKE KREJCI
1. GENNY LIGHT BEER 12. FL. OZ. (355ML)



B-89
CAP LIFTER/KEY SHAPE
3 1/16"

MIKE KREJCI
1. BUCKBEAN BREWING COMPANY BUCKBEANBEER.COM
775-857-4444 / BUCKBEAN BREWING COMPANY
NATIVE NEVADAN



B-90
BRASS/ENAMELED
CAP LIFTER/CIGAR BOX OPENER/NAIL PULLER
(SEE B-3 NO GAS KEY)
3 1/4"

JOHN STANLEY
1. PETER DOELGER FIRST PRIZE BOTTLED BEER EXPRESSLY FOR THE HOME "BEST BEER BREWED"



A-107 TIGER & JUNGLE SCENE (RIGHT)
CAP LIFTER/MAGNET ON BACK
MADE IN CHINA
4 1/2"

MIKE KREJCI
1. BUSCH GARDENS / MADE EXCLUSIVELY FOR BUSCH GARDENS MADE IN CHINA

**A-109 BOTTLE
CAP LIFTER
5"**

JOHN CARTWRIGHT

1. (LOGO) HAWAI'I NUI'' BREWING (WHITE ON BLUE)
2. MEHANA BREWING COMPANY HILO, HAWAII (MEHANA BREWING COMPANY IN LOGO) (WHITE ON BLACK)



**A-110
STATE OF CALIFORNIA/
BOTTLE
CAP LIFTER
3 3/8"**
JOHN STANLEY
1. COORS LIGHT
(MOUNTAIN
SCENE LOGO)
BOTTLES CANS



**C-99
CAP LIFTER
5"**
**JOHN CARTWRIGHT/
ART SANTEN**

1. LAGUNITAS BREWING COMPANY (PIC OF DOG IN CIRCLE) PETALUMA CALIF.



**C-100
CAP LIFTER
4 3/4"**

MIKE KREJCI

1. LEINENKUGEL'S (PIC OF CANOE) JOIN US OUT HERE



**C-101
CAP LIFTER
2 1/16"**

JOHN CARTWRIGHT

1. TAP IT BREWING CO. TAPITBREWING.COM



**G-142
CAP LIFTER
3 9/16"**
**TODD BARNES/
JOHN CARTWRIGHT/
BRIAN COOLEY**
1. ALESMITH BREWING COMPANY (PIC OF BEER GLASS ON ANVIL) (SAN DIEGO MICRO)



**G-143
DOUBLE CAP LIFTER
2 7/8"**
**TODD BARNES/
ART SANTEN**

1. (LOGO) BREWHOUSE WWW.BREWHOUSE.NET (DULUTH MINN MICRO)



G-144
CAP LIFTER
3 1/8"

JOHN CARTWRIGHT/MIKE KREJCI/ART SANTEN

1. BRIDGEPORT (PIC OF BRIDGE) / OREGON'S OLDEST CRAFT BREWERY (PIC OF BRIDGE)
2. BUD LIGHT LIME (LOGO WITH A LIME)
3. HOP CZAR (PIC OF CZAR) IMPERIAL INDIA PALE ALE / SAME



G-147
CAP LIFTER
3 1/4"
BEN HOFFMAN

1. BUD LIGHT (LOGO) / SAME



G-148
CAP LIFTER
2 3/8"
BEN HOFFMAN/
ART SANTEN

1. DEL NORTE BREWING CO. DENVER, COLO. (WHITE ON RED)

G-145
CAP LIFTER/GLASS
2 7/8"

TODD BARNES/
JOHN CARTWRIGHT/
BRIAN COOLEY

1. THE BRUERY / SAME (ORANGE COUNTY CA MICRO)



Del Norte BREWING CO.
DENVER, COLO.



G-146
CAP LIFTER
(SEE G-28,48)
MADE IN CHINA
3"

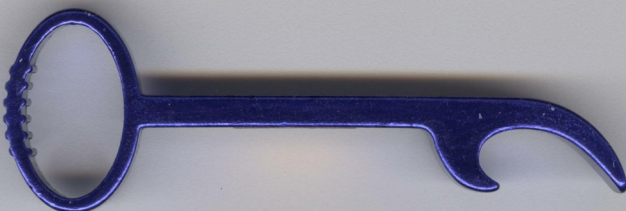
MIKE KREJCI/ART SANTEN

1. BUD LIGHT (L LOGO) (WHITE ON BLUE)

G-149
CAP LIFTER
3 5/8"

MIKE KREJCI

1. GENNY LIGHT (IN LOGO)



**G-150
CAP LIFTER**

**MARKED "PD (TRIANGLE CIRCLE LOGO) CHINA"
2 7/8"**

TODD BARNES/JOHN CARTWRIGHT/BRIAN COOLEY

1. GREEN FLASH BREWING CO. FINE HAND-CRAFTED ALES SAN DIEGO, CALIFORNIA (PIC OF SUN SETTING IN SEA WITH MALT & HOP LEAVES)



G-152

CAP LIFTER/BOTTLE SHAPED HANDLE

3 1/2"

JOHN STANLEY

1. I. P. A. CERTIFIED ORGANIC (EEL RIVER BREWING LOGO FORTUNA CA)



G-153

CAP LIFTER

2 13/16"

TODD BARNES/JOHN CARTWRIGHT/BRIAN COOLEY

1. IRON FIST BREWING CO. (PIC OF FIST AND HOP LEAVES AND BREWERY) VISTA, CALIFORNIA THE RESISTANCE ALE AGED IN WHITE WINE BARRELS

G-151

CAP LIFTER

2 1/4"

**TODD BARNES/
BRIAN COOLEY/
MIKE KREJCI/
ART SANTEN**

1. BALLAST POINT (LOGO) BREWING & SPIRITS EST. 1996 SAN DIEGO, CA. / SAME
2. HARPOON IPA BOSTON, MA WINDSOR, VT LOVE LIFE. / (H IN DIAMOND LOGO) LOVE BEER.



G-155

CAP LIFTER

2 1/2"

**TODD BARNES/
BRIAN COOLEY**

1. THE PHOENIX ALE BREWERY FRETZY'S UNFILTERED ALE TM PHOENIXBREW.COM / SAME



**G-154
CAP LIFTER
(SEE G-46 MUCH HEAVEIER)
2 3/4"**

MIKE KREJCI

1. BLUE MOON (LOGO) BREWING CO.
2. LEINENKUGEL'S
3. LEINENKUGEL'S CLASSIC AMBER (IN LOGO J. LEINENKUGEL BREWING COMPANY (PIC OF INDIAN MAIDEN) EST. 1867 HIGHEST QUALITY)
4. LEINENKUGEL'S HONEY WEISS (IN LOGO J. LEINENKUGEL BREWING COMPANY (PIC OF INDIAN MAIDEN) EST. 1867 HIGHEST QUALITY)
5. LEINENKUGEL'S ORIGINAL (PIC OF INDIAN MAIDEN)
6. LEINENKUGEL'S SUMMER SHANDY (IN LOGO J. LEINENKUGEL BREWING COMPANY (PIC OF INDIAN MAIDEN) EST. 1867 HIGHEST QUALITY)
7. LEINENKUGEL'S SUNSET WHEAT (IN LOGO J. LEINENKUGEL BREWING COMPANY (PIC OF INDIAN MAIDEN) EST. 1867 HIGHEST QUALITY)

**G-157
CAP LIFTER/
1 15/16"**

JOHN CARTWRIGHT

1. TAP IT BREWING CO. SAN LUIS OBISPO CA (IN HOP LEAF LOGO) TAPITBREWING.COM / SAME



**G-158
CAP LIFTER/BOTTLE SHAPE
MAGNET ON BACK
5 3/4"**

JOHN CARTWRIGHT

1. ALASKAN (PIC OF SHIP) AMBER ALE STYLE BEER
2. ALASKAN (PIC OF POLAR BEAR) SUMMER KOLSCH-STYLE ALE
3. ALASKAN (PIC OF WHALE) WHITE WHEAT ALE BREWED WITH SPICES

**M-177
CAP LIFTER/
PLASTIC HANDLE
5 5/8"**

MIKE KREJCI

1. BUDWEISER (SCRIPT) / SAME (WHITE ON RED)



**G-156
CAP LIFTER/EUROPEAN MEDALLION STYLE
3 1/2"**

MIKE KREJCI

1. SAMUEL ADAMS BOSTON LAGER (PIC OF ADAMS)



M-178
CAP LIFTER/POLISHED ALUMINUM
5 5/16"

- JOHN CARTWRIGHT
1. (STAR LOGO) PIKE SEATTLE



- M-180
CAP LIFTER/WOOD HANDLE
6 1/2" (CAN VARY)/JOHN CARTWRIGHT
1. T G (TERMINAL GRAVITY BREWING ENTERPRISE OR)

M-179
CAP LIFTER/CELLULOID BUTTON (MAKE BOLO TIE)
MARKED "BOTTLE OPENER"
2 1/4"

- MIKE KREJCI
1. POINT (PIC OF POINT MAN) (STEVENS POINT BREWERY BREWING EXCELLENCE SINCE 1857 IN LOGO)
 2. POINT NUDE BEACH SUMMER WHEAT (PIC OF NUDE BEACH) (STEVENS POINT BREWERY BREWING EXCELLENCE SINCE 1857 IN LOGO)
 3. POINT PREMIUM ROOT BEER (PIC OF OLD BREWERY SCENE) (STEVENS POINT BREWERY BREWING EXCELLENCE SINCE 1857 IN LOGO)
 4. POINT 2012 BLACK ALE (PIC OF INCA CALENDAR) (STEVENS POINT BREWERY BREWING EXCELLENCE SINCE 1857 IN LOGO)

M-181
LEATHERMAN TYPE TOOL (8 TOOLS)
CAN OR BOTTLE OPENER/NEEDLENOSE PLIERS/
REGULAR PLIERS/WIRE CUTTERS/HARD-WIRE CUTTERS/
CLIP-POINT KNIFE/SERRATED KNIFE/WOOD SAW-RULER/
SCREWDRIVERS: PHILLIPS/REGULAR-FILE/
ELECTRICAL CRIMPER/WIRE STRIPPER/JEWELERS
4 1/2" CLOSED

- BEN HOFFMAN
1. YUENGLING SINCE 1829 AMERICA'S OLDEST BREWERY POTTSVILLE, PA.



N-180
CAP LIFTER/CARIBINER
MADE IN CHINA
2 3/4" (W/O STRAP)
ART SANTEN

1. BUD LIGHT (IN LOGO) OFFICIAL BEER SPONSOR
NFL (IN NFL LOGO)



M-182

LEATHERMAN MICRA TOOL (6 TOOLS)
 BOTTLE OPENER/NEEDLENOSE PLIERS/
 REGULAR PLIERS/WIRE CUTTERS/HARD-WIRE CUTTERS/
 CLIP-POINT KNIFE/SCISSORS/TWEEZERS/
 NAIL FILE-CLEANER/FLAT PHILLIPS SCREWDRIVER/
 EXTRA SMALL SCREWDRIVER/MEDIUM SCREWDRIVER/RULER
 MASTER BLADE MARKED "LEATHERMAN"
 MARKED "LEATHERMAN U S A LEATHERMAN MICRA TM"
 2 1/2" CLOSED
 BEN HOFFMAN

1. COORS LIGHT



N-182

SINGLE BLADE KNIFE
 CAP LIFTER BUILT INTO HANDLE/NO GAS KEY
 (SEE N-70)
 3 1/4"
 SCOTT WILLIAMS

1. GOLDEN GRAIN BELT BEER (IN DIAMOND LOGO)
 C.B. SMITH WHOLESALER DES MOINES, IA. / COM-
 PLIMENTS



N-185

TWO BLADE KNIFE
 CAP LIFTER-SCREWDRIVER BLADE/KNIFE BLADE (SEE N-18, 84)
 3 1/4"
 JOHN STANLEY

1. L. F. KILIAN OLD STYLE LAGER B. R. FALLS



N-181 (LEFT)

FOUR BLADE KNIFE
 CAP LIFTER-SCREWDRIVER BLADE/MASTER BLADE/
 SCREWDRIVER BLADE/PHILLIPS SCREWDRIVER BLADE
 FLASHLIGHT (BUTTON ON BACK)
 2 3/8"
 MIKE KREJCI/ART SANTEN

1. BUSCH BEER (IN LOGO)
2. MILLER LITE (IN LOGO)



N-183
 CAP LIFTER/C-TYPE IN BUTTERFLY TOOL
 MARKED "BK1459 STAINLESS CHINA"
 5 1/4" CLOSED & 8 1/4" OPENED
 ART SANTEN/JOHN STANLEY
 1. (PIC OF DOG) LAGUNITAS BREWING COMPANY (IN
 LOGO LAGUNITAS IPA INDIA PALE ALE) BUDK TM

N-186
 CAP LIFTER/FLASH DRIVE 2GB
 3 1/2"
 JOHN CARTWRIGHT
 1. SIERRA NEVADA BREWING CO.

N-184
 THREE BALDE KNIFE/IN PLASTIC 6 KEYRING CASE
 4" (SEE N-56)
 BEN HOFFMAN
 1. MILLER GENUINE DRAFT PM50-POCKETMATE-ASI
 #67530 & 75600



**Please have any Unlisted (ULs)
 to the 2011 Handbook
 To your editor by February 28th!**



P-201
 SINGLE BLADE KNIFE/CORKSCREW/CAP LIFTER IN HANDLE
 MINI VERSION OF P-15 2 1/2" LONG
 PAT STAMBAUGH
 1. HEIGHTS BEVERAGE COMPANY HAMM'S BEER - SK-5-
 0313 ATLAS PRAGER



P-200

DOUBLE BLADE KNIFE/CORKSCREW
CELLULOID HANDLES W/ COPPER INLAY
BLADES MARKED "AWISA" & "MADE IN CZECHOSLOVAKIA"
DAVE PINNEY

- 1. BODE & VOIGT NEW YORK (PIC OF MALT & HOP LEAVES) (DEALERS IN BOHEMIAN MALT & HOPS)



P-203

SINGLE BLADE KNIFE/CORKSCREW/CAP LIFTER
PLASTIC HANDLES
BEN HOFFMAN
1. NEW AMSTERDAM AMBER BEER



P-202

CORKSCREW/CAPLIFTER/ICE PICK
CORKSCREW IN WOODEN HANDLE
(SEE P-33,133,163) (CAP LIFTER NOT FRETS)
PAT STAMBAUGH

- 1. HAUENSTEIN'S BEVERAGES "DELICIOUS" TELEPHONE NO. 1



CYMBA
bottle openers + more



THANKS
for your order!

978-OK-CYMBA
978-652-9622

po box 1201
westford, ma 01886

cymbainc@aol.com

P-204

FIVE BLADE KNIFE/CORKSCREW/CAP LIFTER-SCREWDRIVER/
CAP LIFTER-CAN OPENER/MASTER BLADE/
PHILLIPS SCREWDRIVER
METAL HANDLES (SEE P-174,184)
JOHN CARTWRIGHT

1. WIDMER



Q-118

TWIST OFF CAP REMOVER IN BACK/
TAB LIFTER SLOT ON OPPOSITE END/KEY CHAIN HOLE
#1 MARKED "BEVERAGE BUDDY ASI 8862 PAT.PEND."
3 3/16"

OLLIE HIBBELEER/MIKE KREJCI

1. ANHEUSER-BUSCH BUDWEISER KING OF BEERS (ON BUDWEISER CAN) (BLUE & RED ON WHITE)
2. (EAGLE IN A) BUDWEISER KING OF BEERS (ON BUDWEISER CAN) (RED ON WHITE)



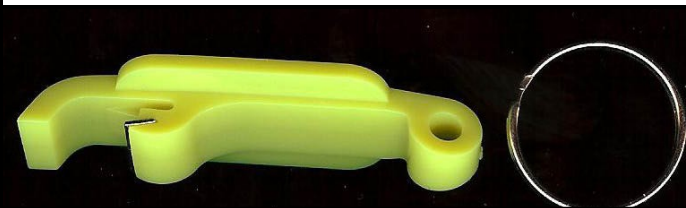
Q-119 (RIGHT)
CAP LIFTER/TAB LIFTER
MARKED
"EVANS ASI 52840"
2 3/4"
MIKE KREJCI
1. COORS LIGHT
(MOUNTAIN SCENE)



Q-117 (LEFT)
TWIST OFF CAP REMOVER IN BACK/
TAB LIFTER SLOT IN SIDE
OPENER ALL METAL
(SEE Q-12 NO KEY RING TAB)
MARKED "MADE IN CANADA BEV KEY"
1 3/4"
JOHN CARTWRIGHT
1. (MOUNTAIN SCENE) ALASKAN BREWING CO. BREWED & BOTTLED IN JUNEAU, ALASKA (WHITE ON MAROON)

Q-120
 CAP LIFTER/NO TAB LIFTER (SEE Q-36)
 MARKED "HONG KONG"
 2 1/2"

- TODD BARNES/JOHN CARTWRIGHT/BRIAN COOLEY
 1. DAVE'S ELECTRIC BREWPUB TEMPE, ARIZONA 5TH STREET & COLLEGE 480-967-5353 (BLACK ON YELLOW)



Q-121
 CAP LIFTER/TWIST OFF CAP REMOVER SLOT
 OPENER END SHAPED LIKE A FIST (SEE Q-30)
 3 5/8"

- SCOTT WILLIAMS
 1. MILLSTREAM (PIC OF BREWERY) BREWING CO. AMANA, IOWA (BLACK ON RED) (BLACK ON WHITE)



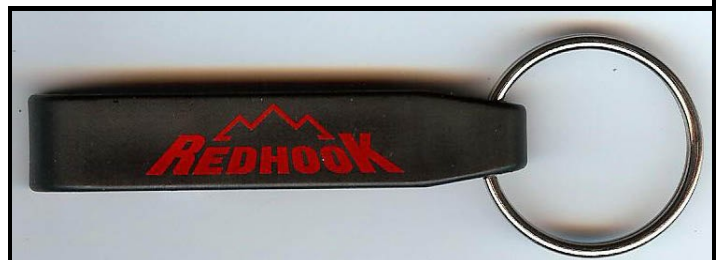
Q-122
 CAP LIFTER/NO TAB LIFTER (SEE Q-22)
 MARKED "PAT. PENDING TAIWAN"
 2 5/8"

- MIKE KREJCI
 1. OLD MILWAUKEE BEER



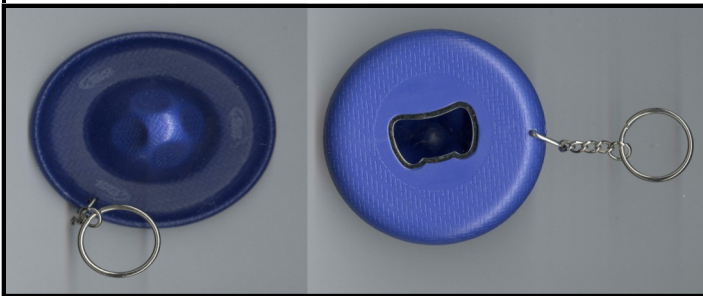
Q-123
 CAP LIFTER/NO TAB LIFTER (SEE Q-18)
 2 5/8"

- JOHN CARTWRIGHT
 1. REDHOOK (LOGO) (RED ON BLACK)
 2. WIDMER BROTHERS BREWING (YELLOW ON BLACK)



R-90
SOMBRERO/CAP LIFTER
3"

MIKE KREJCI
1. BUD LIGHT (IN LOGO) BUD LIGHT (IN LOGO) BUD LIGHT (IN LOGO)



R-91
PADDLE/CAP LIFTER
3 1/2"

JOHN CARTWRIGHT/MIKE KREJCI
1. LEINENKUGEL'S (WHITE ON RED)



R-93 (FAR LEFT)
GLASS OF BEER/CAP LIFTER
3 1/4"

TOM BALANDA JR/
BEN HOFFMAN
1. (PIC OF CAT)
OTTO'S PUB AND
BREWERY EST.
2002 / OTTO'S PUB
& BREWERY (IN
LOGO) HOPPY VAL-
LEY, PA.

R-94 (LEFT)
PAIR OF SKIS/CAP LIFTER
MARKED "MADE IN CANADA"
2 1/2"

JOHN STANLEY
1. SAMUEL ADAMS /
SAMUEL ADAMS
SAMUEL ADAMS

R-92
TV REMOTE CONTROL/CAP LIFTER
MARKED "CLICKER"
MADE IN CHINA
8 3/4"

ART SANTEN
1. NATTY LIGHT (LOGO) / CLICKER (COMPANY WORD-
ING)



R-93 (FAR LEFT)
GLASS OF BEER/CAP LIFTER
3 1/4"

TOM BALANDA JR/
BEN HOFFMAN
1. (PIC OF CAT)
OTTO'S PUB AND
BREWERY EST.
2002 / OTTO'S PUB
& BREWERY (IN
LOGO) HOPPY VAL-
LEY, PA.

R-94 (LEFT)
PAIR OF SKIS/CAP LIFTER
MARKED "MADE IN CANADA"
2 1/2"

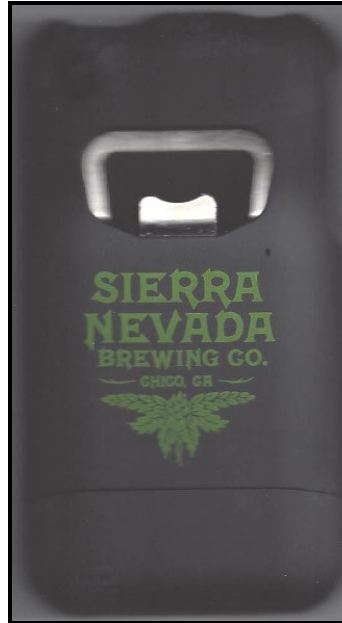
JOHN STANLEY
1. SAMUEL ADAMS /
SAMUEL ADAMS
SAMUEL ADAMS

R-95
TRAILER TOWING HITCH (RAM'S HEAD)/CAP LIFTER
6"
EBAY

- 1. SHINER BOCK



R-96
IPHONE CASE/CAP LIFTER
4 3/4"
BRIAN COOLEY
1. SIERRA NEVADA BREWING CO. CHICO, CA. (PIC OF HOP LEAVES)



X-22
2011 JFO CONVENTION OPENER
"CAR SHAPED AFTER A-13 & A-52"
3"

- SCOTT WILLIAMS/JOHN STANLEY
1. JUST FOR OPENERS 33RD ANNUAL CONVENTION CEDAR RAPIDS, IOWA APRIL 27-MAY 1ST, 2011 DRINK BLACKHAWK BEER (JUST FOR OPENERS J. F. O. IN FLAG LOGO) (2 VAR (A) ANTIQUE GOLD (B) ANTIQUE SILVER)



R-97
DOG COLLAR/CAP LIFTER
2 11/16" (OPENER)
JOHN CARTWRIGHT/BRIAN COOLEY
1. WASATCH BEERS (9 TIMES ON NYLON STRAP)



“Opener and eBay Trivia” (“BIN” Buy-It-Now & “DNMR” Did Not Meet Reserve)

A great quarter for selling on eBay and it just proves that if you have good merchandise you will get some great results. I had sent an email saying that starting with this issue I would reduce the eBay results shown to include mainly openers and cork-screws selling for \$40.00 or higher. Results less than \$40.00 will have a few added in but many of these have been the same opener quarter after quarter. After ten years of eBay results I have more than enough sales of common to somewhat uncommon openers.

A-002-8UL, Royal Bohemian Club, 6, \$212.50

As I have reported in the past, this was an opener with no official beer ad until five years ago and now a fourth has surfaced. This Minnesota opener ended up in Minnesota but at a high price (not bad really for this style but not cheap either).

A-013-006, Lemp Var D, 8, \$134.50

The A-13-6 Lemp varieties A, B and C are in my collection and I had to do a double take when this one appeared on eBay. It was a fourth variety and in nice condition. The bidding was high for an A-13 but I had to have it (see picture of all four on page 22). It is amazing to me a distributor would put out at least four different versions of an opener.

A-017-048, Boise (Stamped W A Pugge on back), 6, \$168.15

This one is a rare Idaho opener and even with an owner's name engraved on the back (usually not a big drawing card for most collectors), this A-17 saw several serious bids and it's now in a famous San Antonio collection.

A-017-999, Dr Pepper Good For Life / Wm E Seitz & Co Distributors, 6, \$229.49

A-017-999, Dr Pepper King of Beverages Vim-Vigor-Vitality / G. A. Duerler Mfg. Co. Distributor, 6, \$331.76

John Cartwright was like “O for 5” on previous attempts to buy an A-17 Dr. Pepper lion head opener. He finally scored on the first example but only having lost again on the bottom example. The A-17 Dr. Pepper has been listed with many distributor names on the back but always brings high money.

B-002-014, Lone Star (w/ B-21-109 High Grade), 6, \$170.93

A couple of good Texas openers and most of the money would be for the B-2 brass Lone Star opener. Texas openers still enjoy a good following and especially for pre-pro openers. Getting both brass B-2 Lone Star openers is a real challenge and someone here got one of two.

B-008-003, City Ale, 8, \$183.49

This B-8 was one of two I needed to have them all. I thought I could sneak in and grab it so I went wild bidding 179.99. Holy cow I come in second as former JFO member, Tony Zanghi,

sounded the horn. The B-8 was in nice condition but lately on eBay when I think I am throwing in a crazy high bid, I get beat.

B-009-001, Centennial, 6, \$178.15

Mike Krejci, the real truck driver a.k.a. horn blower, spent a few weeks in Montana this summer and he said he just had to have this opener. Well he got it and not at a cheap price. The B-9 style is cigar shaped and should be an “A” type. It is one of those pre-pro types that I try to get all of the style. Thankfully I already owned the Centennial.

B-018-102, Gerst, 8, \$263.88

A B-18-102 almost always brings good money (\$100-\$150). This opener was in great condition so that meant the price jumped to over \$250. Gerst Breweriana is very desirable and highly sought after but a B-18-102 has seen several examples sold. I have done it myself a few times, gone crazy wanting an opener. It happened on this key style opener.

B-022-104, Appleton, 6, \$158.50

Speaking of going crazy. I thought I owned the only example of this B-22-104 Appleton and mine is pretty worn. This nice example appeared and I really wanted to upgrade and it cost me a lot. I am happy but \$160 for a duplicate is almost insane.

B-030-999, Coca-Cola Bottling Co St Louis, 6, \$200.00

A Coca-Cola opener not offered before on eBay anyway. It was in nice condition and the Coca-Cola collectors thought so too as one paid the \$200 reserve price. Good Coca-Cola openers always seem to be in high demand.

CBO-RBO-04, Black Hawk Cigars / Andy Dehner Cigar Co Burlington IA, 6, \$105.31

Cigar Box Openers have been somewhat slow the last couple of years but with Glen Enloe returning to the hobby, prices are on the way up. The CBO-RBO-04 is the most common CBO style but this ad hit home with the Iowa collectors. They love their “Blackhawk” advertising openers (beer or non-beer).

D-025-002, Schmulbach (BIN), 4, \$200.00

E-008-065, Schmulbach, 4, \$161.17

E-008-121, Old Colony, 6, \$79.99

The three results above were all from auctions I had on eBay. Then Schmulbach openers were bought by the same buyer and is one of those breweries that collectors go crazy over. The D-25-2 I had listed is the only one I had seen. The E-8-121 Old Colony is tough to find and the final price proved that out. Not cheap for a wire opener but then compared to the E-8-61 Schmulbach not that outrageous.

FBOC-418, Winking Boy (Repro), 10, \$195.00

This sell was the first of many for a repro or nice find of the previously rare Winking Boy wall mount. After a couple of

“Opener and eBay Trivia” (“BIN” Buy-It-Now & “DNMR” Did Not Meet Reserve)

sales one listing had up to ten at \$10.00 each (see picture in this article). Besides the paint job which is definitely new these openers have “Wilton Prod.” on the back just like the originals. Maybe someone found an old stash of these and had them freshly painted or the repro guys in Hong Kong and Taiwan are getting really good. Be careful!

G-019-002, Genesee, 8, \$255.99

This is one I originally listed and thought I had the only one. The G-19-2 realized a high price and had several bidders. I waited a month and tried to get \$250.00 for mine but the bidding barely reached \$100.00. A hard style to find with any kind of ad but really hard with U. S. beer advertising.

K-010-001, Schlitz (No Paint), 4, \$179.51

A previous example a few years back brought \$500.00 but this one stopped at \$179.51. Maybe being without paint slowed the bidding down but again a very hard style to find with U. S. beer advertising. It is an opener that every Schlitz collection should have.

L-002-999, Jackson's Napa Soda, 6, \$203.63

A few of the L-2 bottle corkscrews advertising Jackson Napa Soda have sold over the years and leave it to one of the worse condition ones to bring the most money. You just never know when two bidders will battle on eBay. I am just glad I have this one in my collection already.

M-003-041, Harrison Old Heidelberg, 8, \$177.49

It seems like about once a quarter a hard to find U. S. beer slider appears on eBay. This quarter it was the M-3-41 Harrison in very nice condition. Jeb Burruss added this nice opener to his slider collection.

O-002-8UL, Hanley's (Pic of Bull Dog) Ale Beer Always Dependable, 8, \$127.00

Once again the California-Texas gang that found a pile of Erickson Manufactured “O-2”s and “O-6”s offered another UL on eBay. The bidding was not crazy on this one but the Hanley had some great graphics as most in “the find” have. The sellers keep everyone’s bidding IDs private so they can control second chance offers. There were some lucky folks who found this pile of wall mounts.

O-005-999, Icy-O, 6, \$410.11

A few years back a Newport News dealer found five of the long neck (O-505) Icy-Os but so far the O-5 (Starr X) Icy-O is still on the rare side (only 2-3 examples have turned up) and the resulting closing price on this wall mount backed up the rarity.

P-007-999, Coca-Cola (Missing Corkscrew), 4, \$214.38

You have to love buyers who are not sure about what they are doing and go crazy on bidding for an item. Even though the

corkscrew was missing from this opener the Coca-Cola folks went crazy bidding and something that should sell for \$50 brings \$200. The winning bidder emailed me after receiving the item to check if something was missing and I broke the bad news that yes it was. That being said with a little effort a replacement can be found (getting one to fit right is the tough part).

P-025-8UL, (Eagle In A) Anheuser Busch (Eagle In A) / Malt & Hops (Blue Multi-Color) (In Malt Nutrine Pouch), 8, \$1,600.00

P-025-999, Rinshed-Mason Co Detroit (Brass Handles), 6, \$393.00

The Anheuser-Busch knife was in super condition, an unusual color and in a pouch that was marked Malt Nutrine. Add it all up you have a \$1,600.00 knife. It has been a while since an A-B knife went this high. Rarity and condition win out again. The Rinshed-Mason knife was a \$100-\$150 knife I thought before two collectors bumped heads. I was the happy seller and thank you to both bidders.

Z-Corkscrew, English 1855 Lunds Queen Patent w/ Bottle Grips (Best Offer), 8, \$7,009.95

Z-Corkscrew, English 1867 Twiggs 3-Pillar Lifting Jack, 8, \$4,236.37

The two highest result corkscrews are listed above. Just like the A-B knife, rarity and desirability, carry the day when a good corkscrew sells. Corkscrews that have appeared many times in the market place even though they may have brought much higher prices in the past are now selling at a discounted rate. Sometimes as much as one-half off.

Ebay continues to have many good openers and corkscrews but the corkscrew action has definitely shifted to the I. C. C. A. web site for quality and rarity. What the future holds is anybody’s guess but opener and corkscrew collecting remains a great hobby.

FBOC-418 Winking Boy

**Repro for
\$10, at
one time
a \$1,000
opener.
Fresh
paint job
is the
only give-
away!!!**



“Opener and eBay Trivia” (“BIN” Buy-It-Now & “DNMR” Did Not Meet Reserve)

A-001-008, Globe, 8, \$40.00	A-034-999, Ocean Park Beverage Co, 6, \$46.33	B-019-115, Consumers, 8, \$89.88	\$79.99
A-001-112, Pioneer Malt, 6, \$38.51	A-035-012, Renner, 8, \$35.00	B-019-119, Fensel, 6, \$36.88	D-025-002, Schmulbach (BIN), 4, \$200.00
A-002-8UL, Royal Bohemian Club, 6, \$212.50	A-038-001, Hamms, 10, \$169.49	B-019-194, Spaeth, 6, \$48.51	E-004-100, Aetna, 6, \$67.66
A-003-034, E-Z Malt, 6, \$38.05	A-041-001, Medford, 6, \$103.00	B-019-206, National, 8, \$60.00	E-004-119, Hemrich, 6, \$48.99
A-004-011, Popel-Giller, 6, \$42.00	A-041-001, Medford, 6, \$100.50	B-019-279, Park Hancock MI, 6, \$46.55	E-004-327, Old Union, 8, \$50.00
A-004-016, Southern Select, 6, \$54.77	A-059-001, Providence, 6, \$150.00	B-021-109, High Grade (w/ B-2-14 Lone Star), 6, \$170.93	E-005-999, Drink Coca-Cola In Bottles Serves Hospitality In The Home, 6, \$66.77
A-004-043, Reading, 6, \$45.00	A-059-999, Chero-Cola, 4, \$49.99	B-021-113, Jung, 8, \$56.88	E-005-999, Drink Pepsi=Cola Everyday, 6, \$40.99
A-005-069, Atlantic City, 8, \$45.44	A-999-CAN, (Truck) Frontenac Breweries, 6, \$118.84	B-021-278, Marion, 6, \$63.00	E-006-189, Southern, 6, \$57.89
A-009-001, Buffalo Var B, 6, \$36.99	B-001-004, Gund, 4, \$46.88	B-021-494, Paducah, 4, \$24.99	E-008-023, Mischcott, 6, \$39.99
A-009-012, Ringler Var B, 8, \$52.09	B-001-015, Kauffman, 3, \$50.00	B-021-572, New Orleans (BIN), 6, \$75.00	E-008-042, Salt Lake City, 6, \$48.77
A-009-017, Schells, 6, \$84.88	B-002-009, Oakland, 6, \$40.98	B-021-607, Binder, 4, \$67.51	E-008-065, Schmulbach, 4, \$161.17
A-009-025, Top Notch, 6, \$39.51	B-002-012, United States, 4, \$77.00	B-022-016, Ottawa, 6, \$46.88	E-008-082, Evansville, 6, \$38.51
A-009-999, Olympic Ginger Ale, 4, \$44.57	B-002-014, Lone Star (w/ B-21-109 High Grade), 6, \$170.93	B-022-104, Appleton, 6, \$158.50	E-008-118, Poth, 6, \$32.01
A-011-001, Wooden Shoe, 8, \$116.49	B-002-018, Iroquois Wurzburger, 6, \$116.49	B-023-145, White Rose, 6, \$34.00	E-008-121, Old Colony, 6, \$79.99
A-012-999, Coca-Cola (Real Plus 3 Misc), 6, \$78.72	B-002-024, Iroquois, 4, \$48.77	B-024-002, Auto City, 6, \$52.51	E-008-8UL, Hinchcliffe Bros Brevy, 6, \$52.52
A-013-006, Lemp Var D, 8, \$134.50	B-002-027, Spokane, 4, \$60.99	B-027-001, Miller (Steel) (Green), 6, \$20.05	E-009-005, Burton, 6, \$49.01
A-013-009, Gold Top, 4, \$50.00	B-002-032, Hornung, 8, \$76.99	B-029-001, Falls City, 6, \$86.00	E-009-022, Welz & Zerweck (BIN), 8, \$50.00
A-015-026, South Bend, 6, \$52.11	B-002-032, Hornung, 8, \$76.99	B-029-003, Falls City, 6, \$81.51	E-009-075, Monumental, 6, \$60.00
A-015-078, Birk Bros, 10, \$49.99	B-002-999, Coca-Cola (All Black Paint), 6, \$78.77	B-030-002, Capitol, 8, \$26.88	E-009-075, Monumental (BIN), 6, \$45.00
A-016-010, Portsmouth, 4, \$72.00	B-002-999, Coca-Cola (Brass), 6, \$51.00	B-030-010, North American (w/ 12 Misc), 8, \$18.17	E-009-134, Doelger, 6, \$35.00
A-016-999, Chicago 1934 WFs (on Blue Button), 6, \$40.00	B-002-999, Coca-Cola (Red & Black), 8, \$78.72	B-030-999, Coca-Cola Bottling Co St Louis, 6, \$200.00	E-014-646, Tennessee, 8, \$62.88
A-017-048, Boise (Stamped W A Pugge on back), 6, \$168.15	B-002-999, Coca-Cola (Red & Black), 8, \$45.24	B-042-999, Coca-Cola Delicious & Refreshing, 6, \$51.01	E-014-656, Tennessee, 8, \$56.55
A-017-999, Coca-Cola In Bottles, 6, \$88.00	B-005-003, Palouse (w/ 3 Misc), 2, \$78.77	B-065-002, Silver Foam Beverages, 6, \$39.67	E-014-734, Atlas, 6, \$40.60
A-017-999, Coca-Cola In Bottles, 6, \$80.00	B-005-030, Storz, 8, \$53.19	C-001-003, Edelweiss, 8, \$53.05	E-014-751, Waldorf, 6, \$28.99
A-017-999, Dr Pepper Good For Life / Wm E Seitz & Co Distributors, 6, \$229.49	B-005-032, Deer Park, 6, \$89.01	C-002-001, Phoenix, 8, \$46.00	E-014-753, Ambassador, 6, \$41.60
A-017-999, Dr Pepper King of Beverages Vim-Vigor-Vitality / G. A. Duerler Mfg. Co. Distributor, 6, \$331.76	B-005-8UL, American Brewing Baker City OR, 6, \$70.09	C-002-005, Pittsburgh (BIN), 8, \$75.00	E-014-862, Lafayette, 6, \$49.99
A-019-999, Ellsworth Thayer Milwaukee WI M & M Cigars, 6, \$122.50	B-006-027, Neuweilers, 6, \$50.99	C-003-004, Shawano, 3, \$34.99	E-018-005, Haffenreffer, 6, \$25.00
A-019-999, Ellsworth Thayer Milwaukee WI M & M Cigars, 6, \$120.00	B-007-019, Bohrer (Hook Broken Off) (BIN), 2, \$21.00	C-011-038, Atlanta Ice & Bottling, 4, \$53.60	F-006-033, Jung, 6, \$46.55
A-021-097, Old Union, 6, \$100.00	B-008-003, City Ale, 8, \$183.49	C-012-148, Tennessee, 6, \$46.51	F-006-041, Canton, 6, \$40.00
A-023-999, Coca-Cola, 8, \$56.00	B-009-001, Centennial, 6, \$178.15	C-013-015, Columbus, 8, \$49.11	F-009-001, Cleveland & Sandusky, 6, \$29.04
A-024-999, Court Café Albuquerque, 4, \$26.00	B-011-001, Seattle Var B, 8, \$150.00	C-013-015, Columbus, 6, \$41.09	F-009-001, Cleveland & Sandusky, 6, \$28.04
A-025-001, Hamms, 4, \$41.00	B-013-070, Idallo, 6, \$56.66	C-013-179, Kewaunee, 8, \$43.00	F-009-009, Schells, 6, \$127.50
A-025-001, Hamms (Sold as A-38-1), 4, \$76.00	B-014-059, Schwarzenbach, 4, \$31.60	C-013-292, McGovern, 6, \$66.01	F-009-009, Schells, 6, \$78.00
A-026-003, Schoenhofen, 6, \$48.00	B-016-002, Haberle, 8, \$78.77	C-017-008, Hanley (Box of 98), 10, \$69.00	F-018-007, Dallas, 4, \$92.99
A-029-999, Dr Pepper (Spinner), 6, \$41.99	B-017-001, Buffalo, 6, \$29.99	CBO-DHM-10, Missoula Mercantile Co, 6, \$26.66	F-032-004, Hamms, 4, \$61.99
A-029-999, Pepsi=Cola 5c, 6, \$49.00	B-018-078, Tacoma, 6, \$48.99	CBO-HT-10, Royal Burner Cigar, 6, \$34.33	F-039-999, Coca-Cola Gardner Bros, 3, \$108.57
A-030-999, Coca-Cola Sapula-Bristow, 8, \$150.00	B-018-102, Gerst, 8, \$263.88	CBO-PKT-07, San Felice / El Verso, 6, \$34.99	FBOC-034, Beanie Bert, 8, \$310.00
A-034-003, Gilt Top, 8, \$125.00	B-018-153, Bartels \$5,000, 8, \$40.88	CBO-RBO-04, Black Hawk Cigars / Andy Dehner Cigar Co Burlington IA, 6, \$105.31	FBOC-037, Freddie Frosh, 8, \$65.00
A-034-999, Jacob H Berkson Hagerstown MD, 8, \$40.66	B-018-156, Buffalo, 6, \$36.26	CBO-RBO-12, Exemplar Cigars, 6, \$92.00	FBOC-418, Winking Boy (BIN) (Repro), 8, \$60.00
	B-018-166, Crown, 6, \$87.00	CBO-RND-03, F J Moehringer Amsterdam NY / Eventual, 6, \$51.00	FBOC-418, Winking Boy (Repro), 10, \$195.00
	B-018-204, Paducah, 8, \$48.69	CBO-RND-03, Fechts Little Yara Cigar, 6, \$32.67	G-001-051, Lubeck, 8, \$37.25
	B-018-244, A-Bee-See, 6, \$47.00	CBO-SHM-06, Blank, 6, \$32.88	G-009-050, Hamms, 6, \$36.55
	B-018-273, German-American, 4, \$52.85	D-001-011, Blumer, 10, \$41.51	G-010-006, Maltosia, 4, \$89.00
	B-018-342, Raspiller, 6, \$60.00	D-001-015, S B & M, 6, \$33.23	G-019-002, Genesee, 8, \$255.99
	B-018-496, Battle Creek, 6, \$55.00	D-001-033, Edelweiss, 6, \$70.09	H-002-152, Dicks, 6, \$51.00
	B-018-574, Buob, 8, \$54.88	D-001-039, Strohs, 4, \$48.00	I-002-040, Stroudsburg, 8, \$40.00
	B-018-606, Providence, 6, \$40.99	D-001-999, Tiffany & Co Sterling, 8, \$103.50	I-012-077, Reisch, 6, \$48.00
	B-018-646, Kamm & Schellinger, 8, \$65.41	D-008-001, Foss-Schneider, 6, \$79.99	K-002-003, Jackson, 6, \$46.88
	B-019-044, Diehl, 6, \$38.88		K-004-001, Pabst Var A, 8, \$107.50
	B-019-080, Imperial (No 'The'), 6, \$45.44		K-010-001, Schlitz (No Paint), 4, \$79.99

"Opener and eBay Trivia" ("BIN" Buy-It-Now & "DNMR" Did Not Meet Reserve)

\$179.51	M-019-002, Miller, 8, \$49.88	O-004-999, Coca-Cola, 6, \$44.00	P-001-019, Obert, 6, \$169.49
O-8UL-8UL, Southern Select (Could Be A Wall Mount), 8, \$40.00	M-019-002, Miller (In Miller Box), 10, \$102.01	O-005-008, Pearl, 8, \$89.00	P-002-002, Minneapolis, 6, \$61.02
L-002-001, Anheuser-Busch Var A, 8, \$69.00	M-019-002, Miller (In Miller Box), 6, \$90.00	O-005-008, Pearl, 6, \$76.75	P-002-999, Blank (Davis Corkscrew), 8, \$102.50
L-002-001, Anheuser-Busch Var A, 8, \$62.50	M-019-002, Miller (MIB), 10, \$54.00	O-005-008, Pearl, 4, \$52.00	P-002-999, Columbian Exposition, 6, \$63.99
L-002-002, A-B Malt Nutrine, 6, \$46.00	M-019-003, Narragansett, 8, \$56.00	O-005-008, Pearl, 4, \$39.00	P-007-999, Coca-Cola (Missing Corkscrew), 4, \$214.38
L-002-005, Eldridge, 6, \$106.25	M-019-007, Storz, 6, \$76.00	O-005-009, Falstaff, 6, \$90.99	P-013-001, Schlitz, 6, \$139.99
L-002-999, D J Delaney Chicago, 6, \$87.00	M-019-999, Tiffany & Co, 8, \$56.26	O-005-009, Falstaff (MIB), 10, \$45.67	P-013-001, Schlitz (Corkscrew Tip Missing), 8, \$200.00
L-002-999, Edwin Larrabee White Seal Whiskey Detroit, 6, \$95.99	M-025-001, Lemp, 6, \$87.00	O-005-011, Acme, 6, \$72.77	P-015-019, Pabst, 8, \$56.55
L-002-999, Frisch & Co Milwaukee Wis, 6, \$88.65	M-025-001, Lemp, 6, \$69.50	O-005-011, Acme, 4, \$32.00	P-017-005, Gerke (BIN), 6, \$75.00
L-002-999, Jackson's Napa Soda, 6, \$203.63	M-025-001, Lemp, 6, \$62.00	O-005-019, Falstaff, 4, \$125.99	P-024-009, Coors (BIN), 8, \$60.00
L-002-999, Jacob Hicks Liquor Dealer Homestead PA, 6, \$51.00	M-025-001, Lemp, 6, \$44.00	O-005-999, Beaufont Ginger Ale (BIN), 6, \$200.00	P-024-011, Narragansett, 6, \$82.00
L-002-999, Peebles Whiskey Cincinnati, 8, \$61.99	M-025-001, Lemp, 6, \$41.80	O-005-999, Climax Beverages (MIB), 10, \$86.85	P-024-015, Radeke (BIN), 6, \$25.00
L-002-999, The Reliable Grand Union Liquor House Wilkes-Barre PA, 6, \$57.12	M-025-999, Pittsburgh Bridge Co, 6, \$42.00	O-005-999, Green Spot (MIB), 10, \$40.99	P-024-015, Savannah (One Side Missing Ad), 4, \$69.88
L-002-999, W B Foshay Bottling Works Penn Van NY Fine Sodas Etc, 6, \$109.28	M-040-002, Hamms, 8, \$40.00	O-005-999, Icy-O, 6, \$410.11	P-025-003, A-B 1952 (MIB), 10, \$128.38
L-002-999, White Seal Whiskey Detroit, 6, \$75.00	M-047-001, Arnholt Schaefer, 4, \$61.01	O-005-999, Orange Crush, 8, \$58.57	P-025-003, Anheuser-Busch, 8, \$299.99
L-004-068, Southern Select, 6, \$55.08	M-047-001, Arnholt Schaefer, 6, \$60.01	O-005-999, Pepsi=Cola, 4, \$51.51	P-025-003, Anheuser-Busch, 6, \$212.50
L-999-999, (Similar L-1 But Bottle Shaped) Cooks Goldblume (Fantasy), 8, \$59.88	M-509-999, C & C Super Cola, 3, \$46.45	O-005-999, Squirt, 6, \$96.00	P-025-003, Anheuser-Busch 1952 Version, 8, \$182.05
L-999-999, (Similar L-1 But Bottle Shaped) Mumms French Champagne (Larger Bottle), 8, \$49.00	M-999-999, Pepsi=Cola (Medallion Style Opener), 8, \$52.98	O-006-002, Burgermeister, 8, \$44.50	P-025-8UL, (Eagle In A) Anheuser Busch (Eagle In A) / Malt & Hops (Blue Multi-Color) (In Malt Nutrine Pouch), 8, \$1,600.00
M-001-023, Old Colony, 6, \$46.51	N-003-001, Dixie, 8, \$49.09	O-006-007, Arrow, 8, \$64.83	P-025-999, Rinsched-Mason Co Detroit (Brass Handles), 6, \$393.00
M-001-999, Major Cola, 8, \$119.49	N-004-002, Star Wooden Shoe, 6, \$63.10	O-006-8UL, Pearl Lager Beer, 8, \$137.50	P-026-008, Anheuser-Busch, 8, \$360.00
M-002-013, Canandaigua, 6, \$57.00	N-004-999, 1933 Chicago WFs, 8, \$50.00	O-006-999, Coca-Cola, 8, \$177.50	P-026-010, Anheuser-Busch (Bone), 8, \$303.00
M-003-002, Bismarck, 8, \$96.67	N-005-001, West End, 6, \$60.01	O-006-999, Hires Root Beer, 8, \$126.50	P-026-010, Anheuser-Busch (Bone), 4, \$169.16
M-003-002, Bismarck, 8, \$45.44	N-005-005, West End, 8, \$76.00	O-006-999, Hires Root Beer, 8, \$64.77	P-026-010, Anheuser-Busch (Bone), 2, \$125.00
M-003-008, Koehler, 8, \$50.00	N-005-999, Pearl Beer (Decal) (Fantasy), 10, \$18.00	O-006-999, Pepsi=Cola, 8, \$39.00	P-026-011, Anheuser-Busch (Pearl Handles), 6, \$338.33
M-003-010, Chartier Valleys, 6, \$65.44	N-013-002, National Baltimore Orioles, 8, \$51.00	O-006-999, Royal Crown Cola, 8, \$102.50	P-028-001, Buffalo, 4, \$87.01
M-003-018, Stegmaier, 8, \$48.88	N-040-025, Miller, 8, \$41.00	O-008-UL, Wooden Shoe Beer, 6, \$42.01	P-030-999, Saratoga Victoria Water Monarch of Table Waters (Walker 1899 Patent Bar Mount), 6, \$600.00
M-003-019, Zetts, 8, \$100.99	N-050-001, Metz, 4, \$64.99	O-018-999, Rock Spring Ginger Ale, 6, \$41.00	P-054-8UL, New Athens Brewing East St Louis, 6, \$128.50
M-003-020, American, 8, \$86.51	N-070-999, Scharnberg's Bar Bartlett Texas, 6, \$110.45	O-022-999, Drink Coca-Cola, 8, \$131.39	P-067-001, Krueger, 6, \$225.60
M-003-041, Harrison Old Heidelberg, 8, \$177.49	N-078-999, Chero-Cola, 6, \$59.99	O-502-999, The Liquid, 4, \$66.50	P-069-MEX, Central Mexico Beer, 6, \$127.50
M-003-999, Coconut Grove Central Park Hotel NYC, 6, \$56.55	N-078-CAN, Mutz Beer Fernie BC (BIN), 4, \$30.00	O-505-999, Orange Crush, 6, \$153.00	P-082-013, Rainier (BIN), 8, \$59.99
M-006-999, Eco (Pic of Machine) Tire Flaters The Air Station That "Rings The Bell" / Eco (Pic of Meter) Tire Meters Service Station Equipment Co Conshohocken PA When The Chimes Stop The Air Stops, 8, \$112.50	N-080-001, Jax, 6, \$66.01	O-505-999, Orange Crush, 6, \$79.00	P-082-8UL, Anheuser-Busch Newcomerstown OH, 6, \$46.00
M-019-002, Miller, 8, \$89.00	N-085-001, West End, 8, \$41.26	O-505-999, Whistle, 6, \$123.25	P-085-002, Cresson Spring, 6, \$61.60
M-019-002, Miller, 8, \$66.51	N-088-001, Dixie, 8, \$41.00	O-506-999, Seven Up, 8, \$121.50	P-087-CAN, Silver Springs Beer Sherbrooke (Missing Peg), 4, \$116.49
	N-501-999, Chero-Cola, 6, \$49.99	O-511-999, Coca-Cola (Hoof), 6, \$202.50	P-090-002, Bartels, 6, \$43.00
	N-510-999, Coca-Cola, 6, \$46.00	O-511-999, Coca-Cola (Hoof), 6, \$153.59	P-096-001, Gutsch, 4, \$96.00
	N-510-999, Coca-Cola (MIB), 10, \$57.00	O-511-999, Coca-Cola (Hoof), 6, \$151.09	P-102-001, Indianapolis, 6,
	O-002-025, National, 8, \$66.01	O-511-999, Coca-Cola (Hoof), 6, \$91.03	
	O-002-026, Genesee, 6, \$53.00	O-512-999, Brunswick, 6, \$127.50	
	O-002-8UL, Hanley's (Pic of Bull Dog) Ale Beer Always Dependable, 8, \$127.00	O-516-999, Coca-Cola, 6, \$76.00	
	O-002-999, Drink Black Bear Beverages (Pic of Bear), 8, \$33.56	O-516-999, White Rock Ginger Ale, 6, \$99.99	
	O-002-999, Grapette Soda, 8, \$91.00	O-523-999, Coca-Cola, 6, \$99.99	
	O-002-999, Orange Crush, 10, \$77.50	O-523-999, Coca-Cola, 8, \$75.00	
	O-002-999, Orange Crush, 10, \$62.09	O-999-CAN, Black Horse Biere Ale (Similar O-502), 4, \$224.72	
	O-004-031, Jax, 6, \$36.78		

“Opener and eBay Trivia” (“BIN” Buy-It-Now & “DNMR” Did Not Meet Reserve)

\$87.45 P-103-002, Maier & Zobelein, 4, \$62.00	\$334.01 Z-Corkscrew, English 19thC Kings Ivory-T 4 Pillar Rack, 6, \$585.86	Ladies Legs Graef & Schmidt, 6, \$601.99	Great Lakes Dredge & Dock Co, 8, \$190.50
P-109-999, The Dainty, 8, \$97.98	Z-Corkscrew, English 19thC Kings Ivory-T Mechanical, 6, \$350.46	Z-Corkscrew, German 19thC Celluloid Folding Couple (Brown), 6, \$526.00	Z-Corkscrew, US 1933 Large Brass Key Chicago WFs Great Lakes Dredge & Dock Co, 8, \$107.50
P-138-002, Moerlbach, 4, \$27.00	Z-Corkscrew, English 19thC Z-Corkscrew, English 19thC Kings Ivory-T Rack Marked Joseph Rodgers Sheffield, 6, \$591.11	Z-Corkscrew, German 19thC Celluloid Folding Ladies Legs w/ Dark Stripes (Best Offer), 8, \$595.00	Z-Corkscrew, US 1934 Chicago Horse Head Figural, 8, \$51.00
P-164-001, Lembeck & Betz, 8, \$160.27	Z-Corkscrew, English 19thC Lady's Weir's Patent, 6, \$1,097.02	Z-Corkscrew, German 19thC Celluloid Folding Lady (BIN), 8, \$600.00	Z-Corkscrew, US 1936 Boyer Hammer Patent, 6, \$89.01
P-185-999, Blank (No Ad), 6, \$81.99	Z-Corkscrew, English 19thC Miniature Ox Bone-T, 6, \$138.50	Z-Corkscrew, German 19thC Celluloid Mermaid Waiter's Friend, 6, \$500.00	Z-Corkscrew, US 1938 Smythe's Hootch Owl Patent (BIN), 8, \$1,900.00
P-506-999, Coca-Cola (Ruby Corkscrew Patent), 8, \$204.03	Z-Corkscrew, English 19thC Rotary Eclipse Bar Screw, 8, \$598.92	Z-Corkscrew, German 19thC Double Action Wood-T, 6, \$861.11	Z-Corkscrew, US 19thC Pulmanning Bowman, 2, \$237.50
R-004-001, Iroquois, 4, \$77.00	Z-Corkscrew, English 19thC Samuel Cotterill Double Action Thomason Type, 6, \$2,037.82	Z-Corkscrew, German 19thC Folding Horse Legs, 6, \$212.50	Z-Corkscrew, US 19thC Will & Finck Bone Handle, 6, \$650.00
R-006-001, Old Reading Beer (Decal) (Fantasy), 8, \$210.11	Z-Corkscrew, English 19thC Thomas Large Handle Ring, 6, \$851.42	Z-Corkscrew, German 19thC Mini (1 7/8") Celluloid Folding Green Striped Ladies Legs, 8, \$925.00	Z-Corkscrew, US 19thC Will & Finck S F Wood-T w/ Wire Breaker, 6, \$133.50
R-007-001, Hauenstein, 8, \$65.20	Z-Corkscrew, English 19thC Thomason (Missing Badge), 2, \$221.75	Z-Corkscrew, German 19thC Mini (1 7/8") Celluloid Folding Striped Ladies Legs (BIN), 6, \$525.00	Z-Corkscrew, US 20thC Crosby Pup, 8, \$1,500.00
R-007-001, Hauenstein, 6, \$65.00	Z-Corkscrew, English 19thC Thomason 4 Windows Wood-T, 6, \$1,136.00	Z-Corkscrew, German 19thC Roundlet w/ Opener in End Marked Graef & Schmidt, 8, \$138.86	Z-Corkscrew, US 20thC Hoegger Wall Mount Patent, 8, \$544.86
Z-Corkscrew, English ??? 20thC Ivory Penis T-Handle w/ Steel Rack, 6, \$1,200.00	Z-Corkscrew, English 19thC Thomason The Vulcan, 6, \$565.00	Z-Corkscrew, German 20thC Sterling Silver Large Skeleton Key, 8, \$425.00	Z-Corkscrew, US 20thC Wall Mount w/ Bell Corkscrew marked Unis Mfg Co Grand Rapids, 6, \$284.99
Z-999-999, Flash Souvenir Corkscrew-Alexandria Minnesota, 8, \$76.00	Z-Corkscrew, English 20thC Borkeys Race Car T-Handle, 6, \$243.05	Z-Corkscrew, German 20thC Sterling Silver Large Skeleton Key, 8, \$425.00	Z-Corkscrew, US Beau Brummel 14K Gold, 8, \$475.00
Z-Corkscrew, English 1855 Lunds Queen Patent w/ Bottle Grips (Best Offer), 8, \$7,009.95	Z-Corkscrew, French 1880 L'Excelsior, 6, \$256.00	Z-Corkscrew, Irish 18thC Steel Round Cage (Reproduction), 6, \$680.00	Z-Multitool, Leg Shape w/ Cigar Cutter, Buttonhook, Opener, Gas Key, 6, \$52.75
Z-Corkscrew, English 1867 Twiggs 3-Pillar Lifting Jack, 8, \$4,236.37	Z-Corkscrew, French 1909 Dondey & Cordier Patent, 8, \$2,000.00	Z-Corkscrew, US 1862 Chinocks Patent, 6, \$345.00	Z-Opener, US 1934 Chase "Squeezit" Bottle Opener, 8, \$67.00
Z-Corkscrew, English 1867 Twiggs Patent , 6, \$2,455.14	Z-Corkscrew, French 19thC Rousseau Lever, 6, \$450.00	Z-Corkscrew, US 1896 Maud's Patent, 6, \$1,436.00	Z-Opener, US 1934 Chase "Squeezit" Bottle Opener, 8, \$66.00
Z-Corkscrew, English 1867 Twiggs Patent (BIN), 6, \$1,199.00	Z-Corkscrew, French 19thC Single Lever Fishtail, 6, \$787.77	Z-Corkscrew, US 1904 St Louis Exposition (Clough in Metal Sleeve), 6, \$32.50	Z-Opener, US 1934 Chase "Squeezit" Bottle Opener, 8, \$60.00
Z-Corkscrew, English 1874 Burgess Fenton Patent, 8, \$3,178.00	Z-Corkscrew, French 19thC Sterliling Deleuze Champagne Tap, 8, \$1,900.00	Z-Corkscrew, US 1917 Brady "U-Neek" Patent (DNMR), 6, \$555.56	Z-Opener, US 1934 Chase "Squeezit" Bottle Opener, 8, \$59.00
Z-Corkscrew, English 1874 Burgess Fenton Patent, 6, \$2,109.00	Z-Corkscrew, German 1878 Lew's Cork Puller Patent, 6, \$600.00	Z-Corkscrew, US 1926 Camel Head Patent (BIN), 8, \$75.00	Z-Opener, US 1934 Chase "Squeezit" Bottle Opener, 8, \$56.00
Z-Corkscrew, English 1888 McBride Patent, 8, \$212.04	Z-Corkscrew, German 19thC Celluloid 2-Color Folding	Z-Corkscrew, US 1933 Large Brass Key Chicago WFs	
Z-Corkscrew, English 18thC Copley Bow, 6, \$125.00			
Z-Corkscrew, English 1970 Halifax Double Action (1 of 100), 8, \$352.73			
Z-Corkscrew, English 19thC 10 Tool Bow Marked St Royal, 6, \$560.00			
Z-Corkscrew, English 19thC 2-Pillar Ivory-T Mechanical, 6, \$354.30			
Z-Corkscrew, English 19thC 2-Pillar Wood-T Mechanical, 4,			

The somewhat common O-4 Coca-Cola opener is on the left. The much smaller O-22 Coca-Cola is on the right and the first example I have seen. The eBay price was \$131 but I figure most collectors thought it was an O-4 (that is why you have size in your eBay listing). Throw in the fact the O-22 has the “Pat. 6-18-12” date on it and I was a very happy buyer. Great opener.



JFO & Other Clubs/Conventions (Newsletter Name in Italics)

American Breweriana Association (ABA): *American Breweriana Journal* (bi-monthly) on breweriana collecting. Dues \$25.00/year. ABA, PO Box 595767, Fort Gratiot MI 48059-5767. **2012 Jun 4-9 – 31st Annual ABA Convention – Doubletree Worthington Columbus OH– ABA Members Only (Saturday Public Show).** Contact Jean Tieg, E-Mail jtieg@americanbreweriana.org

Brewery Collectibles Club of America (BCCA): *Beer Cans & Brewery Collectibles* (bi-monthly) on breweriana collecting with emphasis on Cans. Dues \$35.00/year (Add Initiation Fee of \$3). BCCA, 747 Merus Ct, Fenton MO 63026-2092. **2011 Aug 30-Sep 1 – BCCA Convention 42 – ??? Springfield MA – BCCA Members Only.** Contact Dave Gausepohl, Email beerdave@fuse.net.

Canadian Brewerianist: *The Canadian Brewerianist* (10/year) on Canadian breweriana collecting. Dues \$25.00/year (US Funds). Loren Newman, 2978 Lakeview Trail, Bright's Grove, Ontario, CANADA, N0N 1C0. **2012 Aug 1-5 – Canadian Brewerianist Annual Convention – ????? – All Breweriana Collectors Welcomed.** Contact Larry Sherk, E-Mail larrysherk@hotmail.com, (416) 465-3386

Canadian Corkscrew Collectors Club (CCCC): *The Quarterly Worme* (quarterly) on corkscrew collecting. Dues \$48.00/year. Milt Becker, One Madison Street 5B, East Rutherford NJ 07073 (Make Check Payable to the Full Club Name)

East Coast Breweriana Association (ECBA): *The Keg* (quarterly) on breweriana collecting. Dues \$32.00/year. ECBA, PO Box 1392, Doylestown PA 18901. **2011 Jul 13-16 – 40th Annual ECBA Convention – ????? Utica NY – ECBA Members Only (Saturday Public Show).** Contact Larry Handy, E-Mail ohugo1@aol.com

Figural Bottle Opener Club (FBOC): *The Opener* (quarterly) on cast iron openers. Dues \$30.00/year. Darryl Miller, 321 S. Cedar St., Lititz, PA 17543 (dgmiller@dejazzd.com). **Annual FBOC Convention Holiday Inn Reading PA (2012 June 8-10).**

Just For Openers (JFO): *Just For Openers* (quarterly) on all areas of opener collecting. Dues \$20.00/year or FREE on the Internet (www.just-for-openers.org). John Stanley, PO Box 51008, Durham NC 27717-1008. **2012 Apr 18-22 – 34th Annual Just For Openers Convention – The Palms Las Vegas NV – All Opener / Corkscrew / Breweriana Collectors Welcomed.** E-Mail jfo@mindspring.com

National Association Breweriana Advertising (NABA): *The Breweriana Collector* (quarterly) on breweriana collecting. Dues \$25.00/year. NABA, 340 E Ashland Ave, Mt Zion IL 62549 **2011 Aug 1-4 – 41st Annual NABA Convention – Hilton Hotel Springfield IL – NABA Members Only (Saturday Public Show).** E-Mail gbaley@comcast.net

SHOWS (Good Sources for Openers & Corkscrews)

2011 Sep 22-24 – 29th Annual Midwest Breweriana Show – Comfort Inn 72nd-Grovers Sts Omaha NE – JFO Members Welcomed. Contact John Mlady (402) 345-7909 or Bill Baburek, (888) 569-7924 E-Mail bjbaburek@cox.net

2012 Feb 15-19 – 33rd Annual Blue & Gray Breweriana Show – Ramada Inn 5324 Jefferson Davis Highway Fredricksburg VA – All JFO Members Welcomed. Contact: John Fisher, PO Box 953, Mechanicsville, MD 20659-0953. 301-290-1573 E-Mail burntwoods@verizon.net

2012 Mar 11 – Annual Spring Breweriana & Beer Can Show – Comfort Inn 72nd & I-80 Omaha NE – 9AM-3PM (6' Tables \$17 Each). Hospitality Room Saturday Night (3/10) hosted by the Cornhusker's Chapter of BCCA. Contact John Mlady (402) 345-7909

Just For Openers 2011 Membership Directory Updates
Just For Openers Current Members: 253 (New Member Numbers 1154-1155)

#	Last Name	First	Spouse	Street	City	St	Zip	Phone	E-Mail	Opener Specialties
1155	Cissell	Joseph	Ramona	847 State Route 339 S	Fancy Farm	KY	42039-9457	270-623-8940 C270-933-7960	mrhanney@wk.net	U S Beer (Ben Hoffman)
1154	Cook	Charlie	Mary Ellen	50348 Taylor Dr	Marcellus	MI	49067-9740	269-646-9813 C269-492-4967	charliecook210@yahoo.com	Figurals (Tom Minne)
95	Enloe	Glen	Pattie	805 N Tepee Dr	Independence	MO	64056-2146	816-796-9965 C816-547-0572	lglenenloe@yahoo.com	US "A" & "B" Type Beer, Cigar Box Openers (Rejoin)
339	Stanley	John	Pat	PO Box 51008 (Address Change)	Durham	NC	27717-1008	919-419-1546 C919-824-3046 F425-795-8874	jfo@mindspring.com	US Beer A-9, A-13, B-22, F-9, G-1, G-5, G-10, H-1, L-2, N-38, O-4, O-8, O-10, O-19, O-22, O-23

Just For Openers	January Issue	April Issue	July Issue	October Issue
Newsletter Content	New Additions to Handbook	Membership Directory	Convention Highlights	New Discoveries
Articles	December 1st	March 1st	June 1st	September 1st
To Members By	January 31st	April 30th	July 31st	October 31st

WANTED (Want & Sale Ads are FREE!!!!)

Openers: Golden Glow: A-1-9, B-23-149, E-14-787. Rainier: B-3-5, B-19-135, B-21-130, F-21-2, N-11-5 & 15, B-14-40 Salinas, C-21-8 Consumers, P-19-7, P-53-6, P-54-18. P-85s: 3,4,5,11,14. Also B-73-29 North Coast, B-74-1 Alcatraz, G-28-66 Golden Gate Ale, G-75-1 SLO, G-99-11 Anderson Valley, M-154-1 Bridgeport, N-89-2 Anchor Steam, O-13-1 & 2 Mendocino, Q-31-85 Bonnama (all colors), T-2-6 Anchor Steam. Also any Breweriana from Rainier (Seattle WA, LA CA, SF CA), Golden West (Oakland CA) & Port Townsend (WA). Buy/Trade. John Cartwright, 1548 Via Arroyo, Paso Robles CA 93446, (805) 712-6836

A-3-19 Stone Malt Akron. Great Trades or Buy. Jeb Burruss, 318 Lost Oak Dr, Canyon Lake TX 78133, (830) 899-7241

A-9s: 26 Penn, 46 Tivoli, 29 Waldorf, B-9-2 Salinas, B-9-10 Ambrosia, B-22s: 8,17,27,49,59,64,67,68,74,77,85,92,95,112,113,116,118,123,130,133,140,142, B-31-11 Bellingham Bay, B-31-12 Salem, C-21-6 Grand Rapids, D-16-1 New Kentucky, E-18-2 Goetz & E-18-7 Portner, G-1s: 68 Glennon, 69 Leidiger 3-V Bev, G-5s: 2,18,23,29,33,39,40,45,46,48,51,52, H-1s: 8,12,21,27,35,39,42,51, N-38-2 Springfield, N-38-4 Budweiser, O-1-2 Leidigers, O-1-6 Walters, O-1-10 sCHMIDT, O-4 Beer & Soda, O-4 Orange Crush, O-8 & O-19 & O-22 & O-23 Beer & Soda, John Stanley, PO Box 51008, Durham NC 27717, (919) 824-3046, Email jfo@mindspring.com

A-17 "Wilber Brewery" & P-8 "Omaha Brewing Association" (EX Condition Only). John Mlady, 1506 S 25th St, Omaha NE 68105-2611, (402) 345-7909

Openers with the word Saloon, Mexican A, B & D style Openers. Great Trades Available. Jack Ford, 5351 Boyd Ave, Oakland CA 94618, (510) 655-5393

B-2s #21 Fresno Local, #22 Haenle, #37 Flecks, #39 R. I. B., #40 Anheuser. Bill Arber, 11162 Broadway St, Alden NY 14004-9515, (716) 681-4833, Email wrabra@aol.com

B-24-95 Flecks Beverages. Al Fleckenstein, 2445 NW Raleigh St, Portland OR 97210, (503) 223-0123, Email flecks@spiritone.com

B-45, B-66, I-7, P-72, P-100, R-14 types with a Corkscrew (Beer/Non-Beer). Herb Danziger, 550 Cherry Ct, Birmingham MI 48009-1459, (248) 646-9470

B-57, B-58, B-62, B-73, Q-10. Cash/Trade. Ben Hoffman, 213 Simmons Rd, Perkiomenville PA 18704, (610) 287-8243 or Email benbey@netcarrier.com

Bond and Lillard Openers (would like to buy). Have A-29, would like any others. Lillard is a family name. George Love, 4301 Forest Plaza Dr, Hixson TN 37343, (423) 877-6006

C-39, D-12, D-24, E-22, M-52, M-68, M-103, O-511, all types. Will buy or trade. Mark Woodard, 1126 Riverboat Court, Annapolis MD 21409, (443) 756-2815, Email mark.woodard@nasa.gov

"E"s! Will Trade/Buy. Top 11 List: E-14-832 Uneeda, E-7-77 Lima, E-2-21 Park, E-3-30 Derby, E-4-207 Yosemite, E-4-244 Sequoia, E-4-245/300 Trainer, E-16-11 Ganser, E-17-9 Everett, E-17-7 I S D. Larry Moter, 10149 Michaels Rd, Woodford VA 22580, (804) 448-3928 E-Mail accneca@aol.com

"I"s to Complete my collection. Please send me a list of your extra "I"s w/ prices. I will respond! Tom Gormally, 22555 Cardiff Dr, Santa Clarita CA 91350, (661) 291-1392, Email tomphyllis@ca.rr.com

I-7s Beer or Non-Beer. Hale Milano, 506 Springhouse Rd, Camp Hill PA 17011-1454, (717) 737-5067

I-7s Beer Openers #45 A-B Malt, #63 Diamond State, #64 Edel Brau, #84 Lion, #78 Malt Diastase, #81 Union Cream, #83 Williams: Will Pay Absolute Top \$\$\$ (Have I-7-40 Stroudsburg for Trade). Joe Todd, 5727 Bardsey Ct, Matthews NC 28104-0645, (704) 957-1658 Email Joseph.Todd@Protech-International.com

Bottle Shaped and/or Openers with Bottle on them. Gary Deachman, PO Box 438, North Woodstock NH 03262, (603) 745-2347

Brown Mfg Co (Starr X) Openers: Balboa, Beaufont Ginger Ale, Grand Prize Texas Largest Seller, Pabst, Pelco, Pep, Pilsen Callao, Schlitz Harold Eblen, (209) 915-5445, E-Mail reggie2dog@msn.com

Corkscrews-Cork Pullers-Syroco (esp Golden Knight & Clown)-Early US Patents-Anything Unusual. Have Corkscrews to Trade or Buy. Please send description to Paul Luchsinger, 2815 King Rook Ct, Williamsburg VA 23185, (757) 345-3984, Email paulcork@cox.net

Corkscrews & Tin Can Openers: Beer Openers for Trade. Joe Young, 36 S Weston Ave, Elgin IL (847) 695-0108

Corkscrews & Postcards depicting Corkscrews. Please send description, photo, sketch, photocopy, or tracing of what you have and advise price wanted. Don Bull, PO Box 596, Wirtz VA 24184, (540) 721-1128, E-Mail cork-screw@bullworks.net

Figural Corkscrews and any WASHINGTON D.C. Openers and/or Corkscrews. Sandra Emme, PO Box 1454, Upper Marlboro MD 20773, (301) 627-8207

Funeral Openers: Any opener with a Funeral Home ad. David Goetz, PO Box 522, Ashland OH 44805, (419) 566-0391, balencur@yahoo.com

Hartford, Connecticut Openers & Breweriana Wanted, esp. E-8-61 Fischer & P-17-4 Columbia. Also general CT & New Eng. Beer Openers. Edward Johnson, 1300 Poquonock Ave, Windsor CT 06095, Email johnsoned1777@hotmail.com

Illinois Openers and Illinois Breweriana. Buy-Sell-Trade. Dave Lendy, 1927 Allen Dr, Geneva IL 60134, (630) 715-2086, Email davidlendy@aol.com

Jamestown Brewing, Kuhn's Beer, Chautauqua Brew, Monessen PA, Independent Brewing, Schaefer, & all Cleveland Beers. Ed Schaefer, PO Box 149, Maple Springs NY 14756, Email eschaeferbeer@juno.com

Joliet IL Openers: Citizens: B-14-97, C-17-69, E-1-32, E-3-12, E-4-175, K-5-6, O-10-1, P-121-1, Porter: A-17-24, B-18-594,618, B-21-199, F-6-9, Sehrings: B-21-561, G-9-39. John Bitterman, Email jebitter@aol.com

L-1 Openers Wanted! Looking for both Beer or Consumer product advertising. Also looking for M1, M2, M3, M73 & Syroco Openers / Corkscrews. Tommy Campnell 10908 NE Bill Point Ct Bainbridge Island, WA 98110, (206) 612-7239, Email tommy.campnell@gmail.com

Minnesota Openers: A-21-63 Schatz-Brau, A-21-77 Otto, A-21-128 Hamm's, B-7-3 Hauenstein, B-7-22 Schells, B-13-2 Grain Belt, B-18-75 Standard, B-21-222 Bierbauer, B-21-370 Fitger, O-2-14 Royal Bohemian, O-4-4 Gluek. Pat Stambaugh, 718 S Lakeshore Dr, Lake City MN 55401, Email p.stam@mchsi.com

Montana & Idaho Beer/Brewery Openers & Breweriana. Steve Armstrong, PO Box 741, Kamiah ID 83536, Email sunset@cybrquest.com

NEBRASKA OPENERS: Any with Nebraska towns or names & Esp Jetter Beer openers. Dick Schroeder, 3857 Calvalry Hills Dr, North Platte NE 69101, (308) 532-5597. Email dbschrod@charter.net

New York Openers: E-4-345 Koch, G-1-67 Hupfel. Will Buy/Trade. Mark Barren, 6141 Tachi Dr., Newfane NY 14108-9517, (716) 778-9724

Pinney Beverage Items Wanted: Pens & Pencils, Bottle & Can Openers, Any item with Pinney Beverage Company, Salt Lake City, Utah. Dave Pinney, 1766 Red Barn Road, Encinitas CA 92024, (760) 753-8151, Email davecent@att.net

Wisconsin Brewery Openers: Knapstein, Hortonville, Princeton, Hochgreve, Bleser, Shawano & Rahr; esp A-17-27 Rahr. Dan Mayville, E7446 County Road H, Fremont WI 54940-9747

Have lists of East Coast beer & soda openers for sale. I can email scans or pictures of any opener. I will also trade for any Pennsylvania beer openers, I need. John Fisher PO Box 953 Mechanicsville, MD 20659-0953 burntwoods@verizon.net

B-21 Key Style Opener with Ad for "American House Chicopee MA". Will pay \$100.00. Ferd Mireault, Email meymessages@hotmail.com

**Please visit the JFO website or Don's website:
www.just-for-openers.org or www.bullworks.net**



4 different A-13-6 Lemp St Louis Beer Cars, left: Var A & B, right: Var C & D. Amazing one distributor would have so many different stampings for one style.

Don Sherman Special Fixed Price List (Closing March 7th/15th 2012)

Don Sherman Special Fixed Price List with some Special Variations

The following are about 1,100 openers from Don Sherman's collection. Don had a great collection of type "A"s and "B"s.

Fixed Price Guidelines (Same Guidelines as Used for Art Santen's & Ollie Hibbele's Openers)

- 1) Email jfo@mindspring.com or call 919-824-3046 for any openers you want (you can make offers)
- 2) Any items you want will have your name reserving the piece until March 7th
- 3) Items with just one member wanting them as of the 7th are

- 4) sold to that member at the listed price
- 5) On March 7th any items that have more than one name wanting the item will have members notified
- 6) Those members may then place a bid that is higher than the price (you do not have to enter a bid)
- 7) If Bids are placed and tie bids are entered, members will be notified again to bid
- 8) Bids must be in by March 15th on any items with multiple names
- 9) Invoices will be sent on the March 16th for all items
- 10) Shipping and Insurance will be additional
- 11) 7 Days to Return Items if NOT SATISFIED
- 12) Results will be shown in the April JFO issue

A-001-002, Aurora, 5, IL, 25.00	A-005-054, Great Falls, 8, MT, 30.00	A-016-999, Charles City Bot , 7, IA, 25.00	A-028-999, Schusters Root Beer, 6, OH, 12.00
A-001-004, Crystal Rock Var A, 5, OH, 20.00	A-005-087, Borra Malt, 5, MI, 20.00	A-017-003, Fremont, 6, NE, 40.00	A-029-002, Blatz, 3, WI, 5.00
A-001-007, Fitgers, 8, MN, 40.00	A-005-999, Blank (Clothed), 9, XX, 5.00	A-017-005, Kamm & Schellinger, 9, IN, 35.00	A-029-003, K B, 9, IL, 15.00
A-001-008, Globe, 7, CA, 15.00	A-005-999, Atlas Bottling, 8, XX, 15.00	A-017-008, Rainier, 7, WA, 40.00	A-029-003, K-B, 7, IL, 12.00
A-001-008, Globe, 6, CA, 15.00	A-005-999, Curo Ginger Ale, 8, XX, 10.00	A-017-011, Cream City, 9, WI, 35.00	A-029-003, K-B, 6, IL, 12.00
A-001-008, Globe, 5, CA, 12.00	A-005-999, Reliable Home Supply, 6, XX, 8.00	A-017-014, Capital City, 8, MT, 40.00	A-029-005, Pabst, 8, WI, 10.00
A-001-014, Maltop, 7, NY, 15.00	A-005-999, Saglinsky Bottling Co, 3, XX, 10.00	A-017-023, Luxus, 6, NE, 25.00	A-029-005, Pabst, 4, WI, 8.00
A-001-016, Montana, 5, MT, 20.00	A-006-001, West End, 7, NY, 18.00	A-017-023, Luxus, 5, NE, 25.00	A-029-007, Rainier, 8, CA, 12.00
A-001-019, Santa Cruz, 6, CA, 40.00	A-007-013, Mohawk, 7, NY, 20.00	A-020-001, Enterprise, 9, MA, 30.00	A-029-007, Rainier, 7, CA, 15.00
A-001-021, El Capitan, 6, CA, 18.00	A-007-023, Marx, 4, MI, 15.00	A-020-023, Kochs, 6, PA, 25.00	A-029-009, Schlitz, 9, WI, 8.00
A-001-023, Grafts, 7, WI, 12.00	A-007-047, Butte, 4, MT, 15.00	A-020-023, Kochs, 4, PA, 20.00	A-029-009, Schlitz, 8, WI, 8.00
A-001-023, Grafts, 5, WI, 12.00	A-007-CAN, Frontenac Ale, 7, CAN, 8.00	A-020-039, Wayne, 6, MI, 15.00	A-029-009, Schlitz, 8, WI, 8.00
A-001-025, Lembeck & Betz, 6, NJ, 35.00	A-007-CAN, Frontenac Ale, 6, CAN, 8.00	A-020-043, Sunset, 8, ID, 25.00	A-029-011, Consumers, 9, CA, 40.00
A-001-028, Yosemite, 5, CA, 25.00	A-007-CAN, Frontenac Brew, 4, CAN, 8.00	A-020-044, Seitz, 7, PA, 25.00	A-029-013, Malt & Hops Sherry Mist, 4, CA, 15.00
A-001-036, Furniture City, 4, MI, 20.00	A-007-CAN, White Cap Cap Ems All, 4, CAN, 15.00	A-020-999, Kamp Fire Bottling Co, 7, XX, 15.00	A-029-014, Potosi, 8, WI, 20.00
A-001-042, Anchor Malt, 5, XX, 18.00	A-008-001, Knickerbocker, 7, NY, 20.00	A-021-001, Becks, 9, NY, 20.00	A-029-014, Potosi, 4, WI, 12.00
A-001-045, Gipps, 6, IL, 35.00	A-012-001, Burgermeister , 6, CA, 12.00	A-021-002, Blatz, 3, WI, 3.00	A-029-015, Schneider, 8, CO, 25.00
A-001-049, Meister Brau, 6, IL, 25.00	A-012-001, Burgermeister , 5, CA, 12.00	A-021-005, Duquesne, 7, PA, 8.00	A-029-018, Pabst, 8, WI, 8.00
A-001-050, Old Style, 8, WI, 25.00	A-012-001, Burgermeister , 5, CA, 12.00	A-021-006, Ziegler, 5, WI, 25.00	A-029-018, Pabst, 7, WI, 8.00
A-001-055, Stone Malt, 6, OH, 20.00	A-012-002, Maier, 5, CA, 20.00	A-021-011, Cataract, 6, NY, 18.00	A-029-021, Manistee, 6, MI, 40.00
A-001-060, Grafts Seal, 7, WI, 20.00	A-012-004, Pointer, 9, IA, 15.00	A-021-011, Cataract, 5, NY, 18.00	A-029-023, Potosi, 9, WI, 20.00
A-001-061, Maltosia, 7, NY, 18.00	A-012-004, Pointer, 7, IA, 15.00	A-021-012, Consumers, 5, RI, 20.00	A-029-023, Potosi, 5, WI, 12.00
A-001-063, Union Malt, 6, WI, 20.00	A-012-010, Beckers, 7, UT, 15.00	A-021-015, Northern, 7, WI, 25.00	A-029-032, Butte, 6, MT, 20.00
A-001-092, Old Style, 7, XX, 25.00	A-012-010, Beckers, 5, UT, 12.00	A-021-018, Budweiser, 4, TX, 25.00	A-029-033, Butte, 7, MT, 20.00
A-001-999, Market St 2, 7, XX, 12.00	A-012-016, Tivoli, 9, CO, 20.00	A-021-024, Grafts Seal, 7, WI, 20.00	A-029-040, Reine, 5, CA, 20.00
A-001-999, B-1, 6, XX, 10.00	A-012-017, Maier, 8, CA, 20.00	A-021-024, Grafts Seal, 7, WI, 20.00	A-029-041, Reine, 4, CA, 20.00
A-001-999, Blank, 6, XX, 3.00	A-012-018, Reine, 7, CA, 15.00	A-021-046, Atlas, 6, IA, 25.00	A-029-041, Reine , 4, CA, 15.00
A-001-999, Market St 1, 6, XX, 12.00	A-012-019, Reine, 6, CA, 15.00	A-021-083, Golden Glow, 5, CA, 25.00	A-029-044, Fox Head, 9, WI, 25.00
A-001-CAN, Pitzls, 7, CAN, 20.00	A-012-019, Reine SF, 5, CA, 18.00	A-021-086, Prior, 9, IL, 25.00	A-029-053, Oakley Malt, 6, XX, 20.00
A-002-999, Kirbyville Hotel, 8, XX, 5.00	A-012-019, Reine SF, 5, CA, 18.00	A-021-096, Schlitz and KB, 4, IA, 30.00	A-029-062, Rainier, 8, CA, 50.00
A-003-008, Jiffy , 8, XX, 15.00	A-012-019, Reine SF, 5, CA, 18.00	A-021-098, Blue Ribbon Metz, 8, KS, 35.00	A-029-074, Veribest Malt, 5, NE, 20.00
A-003-020, Hart, 5, WA, 20.00	A-012-019, Reine SF, 5, CA, 18.00	A-021-099, Carlings, 9, XX, 20.00	A-030-004, Schotts, 8, IL, 30.00
A-003-041, Beloit, 6, WI, 20.00	A-012-019, Reine SF, 5, CA, 18.00	A-021-100, Crystal Rock , 7, PA, 20.00	A-030-011, Rainier, 7, CA, 50.00
A-004-002, National Buck, 7, IL, 15.00	A-012-019, Reine SF, 5, CA, 18.00	A-021-115, Schlitz or Atlas, 7, IL, 35.00	A-032-001, Wooden Shoe, 8, OH, 25.00
A-004-002, National Buck, 7, IL, 15.00	A-012-019, Reine SF, 5, CA, 18.00	A-023-001, Blackhawk, 8, IA, 10.00	A-032-002, Wooden Shoe, 10, OH, 15.00
A-004-009, Leisy, 8, IL, 12.00	A-012-019, Reine SF, 5, CA, 18.00	A-023-001, Blackhawk Var A, 8, IA, 10.00	A-035-004, Buffalo, 6, CA, 20.00
A-004-009, Leisy, 7, IL, 12.00	A-012-019, Reine SF, 5, CA, 18.00	A-023-001, Blackhawk Var A, 8, IA, 10.00	A-035-005, Buffalo Var A, 7, CA, 20.00
A-004-009, Leisy, 7, IL, 12.00	A-012-019, Reine SF, 5, CA, 18.00	A-023-001, Blackhawk Var B, 8, IA, 10.00	A-035-005, Buffalo Var A, 6, CA, 20.00
A-004-011, Popel-Giller, 8, IL, 30.00	A-012-019, Reine SF, 5, CA, 18.00	A-023-001, Blackhawk Var B, 8, IA, 10.00	A-035-005, Buffalo Var B, 6, CA, 20.00
A-004-015, Leisy Temp, 4, IL, 12.00	A-012-019, Reine SF, 5, CA, 18.00	A-023-002, Pearl, 8, TX, 25.00	A-035-006, Capitol, 7, CO, 20.00
A-004-015, Leisy Temp, 4, IL, 8.00	A-012-019, Reine SF, 5, CA, 18.00	A-023-003, Diamond State, 8, DE, 20.00	A-035-008, Leisy, 5, IL, 25.00
A-004-017, Alpen Brau, 5, MO, 20.00	A-012-019, Reine SF, 5, CA, 18.00	A-024-002, Miller, 10, WI, 40.00	A-035-013, Gilt Top, 6, WA, 20.00
A-004-022, Falls City, 7, KY, 25.00	A-012-019, Reine SF, 5, CA, 18.00	A-025-001, Hamms, 6, MN, 35.00	A-035-013, Gilt Top, 4, WA, 25.00
A-004-022, Falls City, 5, KY, 25.00	A-012-019, Reine SF, 5, CA, 18.00	A-025-009, Edelweiss, 9, IL, 35.00	A-035-018, Walla Walla, 5, WA, 25.00
A-005-001, Golden Ribbon, 7, CA, 25.00	A-012-019, Reine SF, 5, CA, 18.00	A-025-009, Edelweiss, 6, IL, 25.00	A-035-020, Burkhardt, 6, OH, 30.00
A-005-002, Grafts, 5, WI, 15.00	A-012-019, Reine SF, 5, CA, 18.00	A-026-003, Schoenhofen, 6, IL, 40.00	A-035-037, Indian Shooting Bow, 7, MO, 18.00
A-005-008, Utica Club, 2, NY, 15.00	A-012-019, Reine SF, 5, CA, 18.00	A-028-002, Consumers, 9, NY, 20.00	A-035-037, Indian Shooting Bow, 6, MO, 18.00
A-005-010, Four Roses Malt, 6, OH, 12.00	A-012-019, Reine SF, 5, CA, 18.00	A-028-002, Consumers, 8, NY, 18.00	A-035-039, Farmers, 6, WI, 30.00
A-005-012, Buck, 3, IL, 10.00	A-012-019, Reine SF, 5, CA, 18.00	A-028-021, Haffenreffer (Slightly Filed), 4, MA, 12.00	A-035-999, Williams St Louis, 3, MO, 8.00
A-005-013, Western Bottle, 8, OH, 12.00	A-012-019, Reine SF, 5, CA, 18.00	A-028-031, Lexington (Key Chain Wear), 4, KY, 20.00	A-038-001, Hamms, 7, MN, 35.00
A-005-015, Ideal Malt Var A, 6, IA, 15.00	A-012-019, Reine SF, 5, CA, 18.00	A-028-047, Deppen, 5, PA, 15.00	A-038-003, Blatz, 6, WI, 40.00
A-005-015, Ideal Malt Var B, 6, IA, 15.00	A-012-019, Reine SF, 5, CA, 18.00	A-028-047, Deppen, 3, PA, 15.00	A-038-004, Duquesne, 5, PA, 25.00
A-005-015, Ideal, 4, IA, 10.00	A-012-019, Reine SF, 5, CA, 18.00		A-039-999, Bruno's Bev Shores, Ind, 5, IN, 12.00
A-005-016, Zahringer, 6, WI, 15.00	A-012-019, Reine SF, 5, CA, 18.00		

A-042-999, Crown Bottling, 6, XX, 20.00	B-013-001, Ambrosia, 8, IL, 10.00	B-014-106, Cerva, 6, MO, 15.00	B-018-046, Metz, 9, NE, 20.00
A-044-001, Cream City, 8, WI, 25.00	B-013-001, Ambrosia, 7, IL, 10.00	B-014-109, Goetz, 8, WA, 20.00	B-018-048, Minneapolis, 7, MN, 20.00
A-044-003, Schmidt, 7, PA, 25.00	B-013-006, Griesedieck, 5, MO, 12.00	B-014-110, Goetz, 8, MO, 5.00	B-018-050, Moerleins, 3, OH, 12.00
A-044-999, (No Ad) (Brass), 8, XX, 8.00	B-013-008, Heileman, 7, WI, 12.00	B-014-111, Goetz, 7, MO, 5.00	B-018-052, North Yakima, 6, WA, 35.00
A-045-999, Blank, 7, XX, 8.00	B-013-009, Iron City, 5, PA, 12.00	B-014-115, Minneapolis, 4, MN, 15.00	B-018-055, Olympia, 8, WA, 25.00
A-048-999, Signetics, 9, XX, 5.00	B-013-011, Storz, 9, NE, 15.00	B-014-119, Zoller, 5, IA, 10.00	B-018-056, Overland (Name N C Larsen on Back), 5, ID, 20.00
A-048-999, Neblo, 6, XX, 5.00	B-013-018, Graf, 7, WI, 12.00	B-014-120, Cremo, 4, CT, 20.00	B-018-057, Oxford, 7, XX, 18.00
A-053-001, Gold Top, 2, OH, 20.00	B-013-020, Argonaut, 5, CA, 18.00	B-014-127, Burgermeister, 6, CA, 15.00	B-018-060, Phoenix, 8, NY, 20.00
A-053-999, Chauncey Wrights Seattle, 6, WA, 10.00	B-013-024, Bohemian Club, 6, WA, 15.00	B-014-131, Old Anchor, 6, PA, 20.00	B-018-065, Rainier, 5, WA, 12.00
A-070-001, Cooks, 7, IN, 15.00	B-013-032, Iroquois, 6, NY, 20.00	B-014-134, Walters, 4, WI, 15.00	B-018-065, Rainier, 4, WA, 12.00
A-070-001, Cooks, 5, IN, 12.00	B-013-042, Blatz, 5, WI, 12.00	B-014-135, A-1, 9, OR, 25.00	B-018-066, Rainier, 4, WA, 12.00
A-070-001, Cooks, 5, IN, 12.00	B-013-046, Buckeye, 8, OH, 20.00	B-014-139, Golden Glow, 7, CA, 6.00	B-018-066, Rainier, 4, WA, 12.00
A-508-999, Concord Grape Soda, 5, MA, 20.00	B-013-049, Golden Ribbon SF, 5, CA, 20.00	B-014-139, Golden Glow, 6, CA, 6.00	B-018-065, Robinson, 4, PA, 18.00
A-999-999, (Chicken) Nicarbazin, 8, XX, 10.00	B-013-050, Heileman, 5, WI, 12.00	B-014-139, Golden Glow, 5, CA, 6.00	B-018-069, Schlitz, 8, WI, 15.00
B-001-001, Ben Brew (Key Chain Hole Worn Through), 1, OH, 20.00	B-013-054, Malt Extract, 6, IN, 20.00	B-014-148, Glueks, 6, MN, 8.00	B-018-069, Schlitz, 8, WI, 15.00
B-001-004, Gund, 2, WI, 30.00	B-013-058, Tip Top, 4, PA, 15.00	B-014-155, Anaconda, 9, MT, 40.00	B-018-072, Simon, 5, NY, 15.00
B-001-004, Gund, 1, WI, 15.00	B-013-070, Idallo, 8, ID, 35.00	B-014-159, Golden Glow, 4, CA, 8.00	B-018-076, Stegmaiers, 3, PA, 12.00
B-001-005, Pittsburgh Brass, 6, PA, 20.00	B-013-999, Santa Barbara Biltmore, 8, CA, 5.00	B-014-182, Fitgers, 5, MN, 25.00	B-018-078, Tacoma (Key Chain cut to look like B-17), 2, WA, 12.00
B-001-005, Pittsburgh Steel, 3, PA, 15.00	B-013-999, Nifty, 7, XX, 3.00	B-014-183, Oregon Yeast, 5, OR, 15.00	B-018-087, Banner, 5, MI, 25.00
B-001-008, Hamms, 2, MN, 20.00	B-013-999, McConkie & McDowell, 5, IL, 5.00	B-014-999, San Jose Next, 5, CA, 3.00	B-018-092, California, 7, CA, 15.00
B-002-001, Blatz Var A, 6, WI, 25.00	B-013-MEX, Cerveza Tecate, 5, MEX, 12.00	B-014-999, Bludwine, 4, XX, 10.00	B-018-092, Cal Acme, 5, CA, 20.00
B-002-001, Blatz Var B, 6, WI, 35.00	B-014-001, Atlas, 8, IL, 12.00	B-014-CAN, Phoenix, 9, CAN, 5.00	B-018-095, Century Rheinlander, 7, WA, 20.00
B-002-001, Blatz, 2, WI, 15.00	B-014-001, Atlas, 6, IL, 8.00	B-014-CAN, Regina, 9, CAN, 5.00	B-018-101, Feigenspan, 4, NJ, 18.00
B-002-001, Blatz, 1, WI, 12.00	B-014-003, Berghoff, 5, IN, 12.00	B-014-CAN, Champlain, 8, CAN, 5.00	B-018-104, Gold Bond, 5, OH, 18.00
B-002-003, Edelweiss, 3, IL, 15.00	B-014-005, Blatz, 9, WI, 25.00	B-014-CAN, Drewrys, 7, CAN, 5.00	B-018-104, Gold Bond, 5, OH, 18.00
B-002-004, Feigenspan Var A, 8, NJ, 30.00	B-014-012, E B Co, 5, MI, 12.00	B-014-CAN, Hub City, 7, CAN, 5.00	B-018-105, Grain Belt, 9, MN, 18.00
B-002-004, Feigenspan Var A, 3, NJ, 15.00	B-014-013, Feckers, 9, IN, 15.00	B-014-CAN, LaCanadienne, 7, CAN, 5.00	B-018-107, Hamms, 7, MN, 20.00
B-002-004, Feigenspan Var B, 3, NJ, 15.00	B-014-018, Goebel, 7, MI, 12.00	B-014-CAN, Vancouver, 7, CAN, 5.00	B-018-107, Hamms, 6, MN, 12.00
B-002-005, Fresno, 6, CA, 40.00	B-014-018, Goebel, 4, MI, 10.00	B-014-CAN, Boswell, 5, CAN, 5.00	B-018-107, Hamms, 5, MN, 12.00
B-002-007, Krug Var A, 3, NE, 25.00	B-014-019, Goetz, 9, MO, 5.00	B-015-001, Old German Lager, 6, CA, 25.00	B-018-108, Hamms, 6, MN, 15.00
B-002-007, Krug Var B, 2, NE, 25.00	B-014-019, Goetz, 8, MO, 5.00	B-015-002, Zangs, 7, CO, 12.00	B-018-112, Montana, 7, MT, 30.00
B-002-012, United States, 8, IL, 75.00	B-014-019, Goetz, 8, MO, 5.00	B-015-004, Huebner, 6, OH, 18.00	B-018-116, Rainier Brew, 6, WA, 12.00
B-002-016, Phoenix, 1, NY, 10.00	B-014-023, Golden Glow, 8, CA, 5.00	B-015-005, Gold Bond, 4, OH, 20.00	B-018-117, Schmidt, 4, MN, 15.00
B-002-020, Acme, 9, CA, 125.00	B-014-023, Golden Glow, 6, CA, 5.00	B-015-CAN, Dow, 7, CAN, 10.00	B-018-120, Schwarzenbach, 4, PA, 25.00
B-002-025, Luxus, 6, NE, 20.00	B-014-024, Grand Prize, 8, TX, 8.00	B-016-003, Germain, 6, MD, 40.00	B-018-132, Blatz, 4, WI, 15.00
B-002-025, Luxus, 6, NE, 20.00	B-014-025, Grand Prize, 8, TX, 5.00	B-017-001, Buffalo, 5, CA, 35.00	B-018-134, Edelweiss, 8, IL, 15.00
B-002-025, Luxus, 6, NE, 20.00	B-014-026, Hamms, 6, MN, 10.00	B-018-002, American, 8, NY, 20.00	B-018-138, Gund, 4, WI, 12.00
B-002-027, Spokane, 6, WA, 60.00	B-014-030, K & S Var A, 6, IN, 15.00	B-018-003, American, 6, NY, 12.00	B-018-138, Gund, 4, WI, 12.00
B-002-033, Old Style, 7, WI, 25.00	B-014-030, K & S Var B, 5, IN, 15.00	B-018-007, Berlin, 6, WI, 15.00	B-018-140, Leisy, 9, IL, 25.00
B-002-033, Old Style, 5, WI, 20.00	B-014-031, Keeleys, 6, IL, 12.00	B-018-009, Buffalo Co-Op, 4, NY, 20.00	B-018-143, Peoples, 5, WI, 20.00
B-002-033, Old Style, 3, WI, 15.00	B-014-031, Keeleys, 5, IL, 8.00	B-018-010, Bushkill, 6, PA, 15.00	B-018-147, Schlitz, 8, WI, 18.00
B-002-035, Bangor, 7, WI, 75.00	B-014-033, Manitowoc, 6, WI, 8.00	B-018-011, Cal Old Bohemian, 5, CA, 20.00	B-018-156, Buffalo, 3, CA, 20.00
B-002-036, Wagner, 2, OH, 60.00	B-014-033, Manitowoc, 5, WI, 8.00	B-018-012, Canandaigua, 6, NY, 25.00	B-018-162, Claussen, 7, WA, 25.00
B-002-043, Eagle, 8, NY, 40.00	B-014-037, Pittsburgh, 8, PA, 12.00	B-018-017, Cooks, 5, IN, 20.00	B-018-175, Erie, 7, PA, 25.00
B-003-004, Edelweiss, 8, IL, 25.00	B-014-037, Pittsburgh, 5, PA, 8.00	B-018-019, Daeufer-Lieberman, 7, PA, 15.00	B-018-182, Franklin, 8, OH, 20.00
B-003-004, Edelweiss, 4, IL, 15.00	B-014-038, Pittsburgh, 5, PA, 12.00	B-018-019, Daeufer-Lieberman, 5, PA, 12.00	B-018-186, Northern, 7, WI, 18.00
B-004-002, Scheidt Var A, 6, PA, 20.00	B-014-039, Mathie, 7, WI, 15.00	B-018-020, Dawsons, 9, MA, 25.00	B-018-188, Helvetia, 6, IL, 30.00
B-004-002, Scheidt Var A, 5, PA, 18.00	B-014-041, Schmidt, 5, MN, 5.00	B-018-021, Dicks, 7, IL, 20.00	B-018-201, Moerleins, 3, OH, 12.00
B-004-002, Scheidt Var B, 2, PA, 15.00	B-014-041, Schmidt, 5, MN, 5.00	B-018-021, Dicks, 6, IL, 12.00	B-018-208, Pfaffs, 4, MA, 15.00
B-005-005, Spokane, 4, WA, 30.00	B-014-044, Walters, 7, CO, 18.00	B-018-022, Dubuque, 8, IA, 10.00	B-018-212, Portland, 7, OR, 25.00
B-005-010, Colorado-Columbine, 4, CO, 75.00	B-014-046, Yuengling, 6, PA, 15.00	B-018-022, Dubuque, 7, IA, 8.00	B-018-215, Radeke, 6, IL, 25.00
B-005-026, Republic, 6, WA, 40.00	B-014-047, Alpen Brau, 8, MO, 10.00	B-018-022, Dubuque, 5, IA, 8.00	B-018-215, Radeke, 5, IL, 18.00
B-005-031, Royal, 1, MO, 10.00	B-014-047, Alpen Brau, 7, MO, 8.00	B-018-023, Dubuque, 8, IA, 8.00	B-018-215, Radeke, 4, IL, 18.00
B-006-004, Columbia, 5, MO, 20.00	B-014-050, Golden Glow, 7, CA, 8.00	B-018-023, Dubuque, 4, IA, 8.00	B-018-219, Seattle, 5, WA, 15.00
B-006-021, Hastings, 6, NE, 25.00	B-014-054, Kingsbury, 7, WI, 8.00	B-018-024, Dubuque, 4, IA, 15.00	B-018-220, Seattle, 6, WA, 15.00
B-006-999, Blank, 9, XX, 5.00	B-014-054, Kingsbury, 7, WI, 5.00	B-018-025, Duquesne, 7, PA, 12.00	B-018-220, Seattle, 5, WA, 15.00
B-006-999, Chancellor Cigars, 5, XX, 10.00	B-014-055, Minneapolis, 6, MN, 12.00	B-018-026, Enterprise, 7, MA, 20.00	B-018-226, South Bend, 7, IN, 20.00
B-006-999, Chancellor Cigars (Different), 1, XX, 5.00	B-014-069, Pickwick, 6, MA, 15.00	B-018-027, Eulberg Var B (Town Under Eulberg), 8, WI, 20.00	B-018-230, Tivoli, 9, CO, 20.00
B-007-005, Heurich, 8, DC, 35.00	B-014-075, Berghoff, 5, IN, 12.00	B-018-027, Eulberg Var A (Town Over Cap Lifter), 5, WI, 20.00	B-018-232, Wagner, 4, IL, 25.00
B-007-999, Ben Hur Cigars, 4, XX, 15.00	B-014-085, Glueks, 9, MN, 5.00	B-018-029, Fresno Var A, 8, CA, 20.00	B-018-234, Washington, 8, OH, 25.00
B-008-004, Home Rule, 7, OH, 20.00	B-014-085, Glueks, 8, MN, 5.00	B-018-030, German, 5, MD, 25.00	B-018-237, Wolfs (Square Hole Cut In), 3, MN, 20.00
B-008-008, Star, 7, OH, 30.00	B-014-085, Glueks, 7, MN, 5.00	B-018-036, Gund, 6, WI, 15.00	B-018-249, Blatz, 4, WI, 15.00
B-009-999, Dresch Cigar Stores / #268, 5, CA, 15.00	B-014-086, Glueks, 4, MN, 8.00	B-018-037, Gund, 7, WI, 15.00	B-018-252, Brucks, 7, OH, 18.00
B-009-999, Rex Aramas Cigar, 5, XX, 15.00	B-014-087, Glueks, 7, MN, 8.00	B-018-038, Horlachers, 5, PA, 12.00	B-018-259, Cream City, 6, WI, 25.00
B-009-999, San Felice Cigars, 5, XX, 12.00	B-014-089, Goetz, 7, MO, 8.00	B-018-039, Interstate, 7, IA, 20.00	B-018-263, Diersen, 8, KY, 40.00
	B-014-090, Goetz, 8, MO, 5.00	B-018-044, Lembeck & Betz, 4, NJ, 20.00	B-018-265, Eagle Run, 4, PA, 20.00
	B-014-090, Goetz, 8, MO, 5.00	B-018-045, Manitowoc, 8, WI, 6.00	B-018-266, Eastside, 6, CA, 25.00
	B-014-092, Golden Glow, 8, CA, 5.00	B-018-045, Manitowoc Var A, 8, WI, 10.00	B-018-269, Fels, 4, MO, 20.00
	B-014-100, Manitowoc, 6, WI, 10.00	B-018-045, Manitowoc Var B, 8, WI, 10.00	B-018-270, Flocks, 7, PA, 20.00
	B-014-100, Manitowoc, 5, WI, 5.00	B-018-045, Manitowoc Var B, 8, WI, 10.00	B-018-270, Flocks, 7, PA, 20.00
	B-014-104, Wausau, 9, WI, 20.00	B-018-045, Manitowoc, 7, WI, 6.00	B-018-279, Home Rule (Square Hole Cut In), 2, IN, 12.00
	B-014-105, Belmont, 4, OH, 25.00		B-018-283, Jung, 5, WI, 20.00
			B-018-284, K & M, 6, XX, 18.00
			B-018-289, Blatz, 8, SD, 35.00
			B-018-305, Schlitz, 6, WI, 15.00

- B-018-305, Schlitz, 5, WI, 15.00
 B-018-306, Schmidt, 6, MN, 18.00
 B-018-310, Seitz, 5, PA, 20.00
 B-018-318, Wasserstroms, 5, XX, 15.00
 B-018-319, Weinhardts, 6, OR, 20.00
 B-018-320, Western, 7, IL, 25.00
 B-018-324, American Maid, 6, PA, 30.00
 B-018-337, Los Angeles, 6, CA, 20.00
 B-018-342, Raspiller, 3, CA, 30.00
 B-018-345, Schuster, 6, MN, 20.00
 B-018-376, Rock Island, 6, IL, 15.00
 B-018-376, Rock Island, 6, IL, 18.00
 B-018-378, Minneapolis, 6, MN, 20.00
 B-018-379, Schmich Bros, 5, IL, 60.00
 B-018-388, Dicks, 8, IL, 20.00
 B-018-393, Hand, 6, IL, 15.00
 B-018-395, Kessler, 5, MT, 20.00
 B-018-398, Minneapolis, 6, MN, 20.00
 B-018-400, Olympia, 5, WA, 25.00
 B-018-420, Kittanning, 3, PA, 20.00
 B-018-439, Port Townsend (Tip Filed), 3, WA, 20.00
 B-018-443, Bavarian, 3, DE, 25.00
 B-018-448, Consumers, 6, CO, 40.00
 B-018-451, Hauenstein, 2, MN, 15.00
 B-018-454, Krantz, 6, OH, 25.00
 B-018-462, Voigt, 6, MI, 35.00
 B-018-478, Sterling, 5, IN, 20.00
 B-018-488, Sunset, 4, ID, 20.00
 B-018-505, Edelbrau, 6, IA, 50.00
 B-018-520, Pilseners, 3, OH, 15.00
 B-018-522, Simon, 6, NY, 20.00
 B-018-528, Elfenbrau, 5, WI, 20.00
 B-018-551, Western Brew, 5, IA, 25.00
 B-018-561, Evans, 5, NY, 15.00
 B-018-BUL, Columbia Brewing New Orleans, 2, LA, 25.00
 B-018-999, Blair Beverage Co. Drink Molto Blairs Root Beer, 8, XX, 10.00
 B-018-999, Compliments of Gettysburg Bottling Gettysburg, PA, 6, PA, 25.00
 B-018-999, The Arlington Bottling Works Wash, DC, 6, DC, 30.00
 B-018-999, Cascade Ginger Ale, 5, XX, 5.00
 B-018-CAN, Carling, 7, CAN, 8.00
 B-018-CAN, Big Chief, 6, CAN, 8.00
 B-018-CAN, Saskatoon, 5, CAN, 8.00
 B-019-002, Bartels, 8, PA, 20.00
 B-019-006, Centlivre, 6, IN, 20.00
 B-019-007, Dicks, 7, IL, 10.00
 B-019-007, Dicks, 4, IL, 12.00
 B-019-013, Gund, 4, WI, 12.00
 B-019-014, Gunds, 5, WI, 12.00
 B-019-015, Haberle, 8, NY, 20.00
 B-019-018, Heidel Brau, 5, IA, 18.00
 B-019-022, Maier, 7, CA, 12.00
 B-019-022, Maier, 5, CA, 12.00
 B-019-023, Maier, 6, CA, 12.00
 B-019-023, Maier, 5, CA, 12.00
 B-019-030, Pittsburgh, 5, PA, 15.00
 B-019-030, Pittsburgh, 4, PA, 12.00
 B-019-031, Rainier, 7, CA, 15.00
 B-019-031, Rainier, 7, WA, 12.00
 B-019-032, Robinson, 9, PA, 20.00
 B-019-037, Washington, 6, OH, 25.00
 B-019-038, Wielands, 6, CA, 15.00
 B-019-038, Wielands, 5, CA, 15.00
 B-019-047, Flecks, 5, MN, 20.00
 B-019-051, Jamestown, 8, NY, 30.00
 B-019-054, Maier, 8, CA, 8.00
 B-019-054, Maier, 8, CA, 8.00
 B-019-054, Maier, 7, CA, 6.00
 B-019-054, Maier, 7, CA, 6.00
 BB-019-055, Moerleins, 5, OH, 15.00
 B-019-058, Radekes, 6, IL, 25.00
 B-019-060, Standard, 4, IL, 15.00
 B-019-062, Dicks, 9, IL, 12.00
 B-019-062, Dicks, 8, IL, 12.00
 B-019-062, Dicks, 8, IL, 12.00
 B-019-062, Dicks, 6, IL, 10.00
 B-019-063, Fillmore, 4, NY, 20.00
 B-019-067, Kessler, 9, MT, 25.00
 B-019-085, Glueks, 6, MN, 15.00
 B-019-086, Goetz, 6, MO, 15.00
 B-019-087, Gold Medal, 5, PA, 12.00
 B-019-087, Gold Medal, 4, PA, 15.00
 B-019-089, Home, 4, IN, 20.00
 B-019-095, Maier, 7, CA, 15.00
 B-019-095, Maier, 5, CA, 15.00
 B-019-097, Michel, 6, WI, 20.00
 B-019-098, Muessel, 8, IN, 25.00
 B-019-102, Salem, 6, OR, 25.00
 B-019-104, Schellhas, 7, MN, 35.00
 B-019-108, Star, 8, OH, 25.00
 B-019-110, Walters, 8, CO, 25.00
 B-019-110, Walter, 6, CO, 20.00
 B-019-111, American, 5, MT, 20.00
 B-019-119, Fensel, 6, NY, 25.00
 B-019-121, Fitgers, 5, MN, 25.00
 B-019-123, Gund, 7, WI, 12.00
 B-019-123, Gund, 6, WI, 12.00
 B-019-123, Gund, 4, WI, 12.00
 B-019-124, Gund, 4, WI, 12.00
 B-019-127, Hennepin, 5, MN, 20.00
 B-019-130, Mt Penn, 4, PA, 25.00
 B-019-131, Oswald, 7, PA, 20.00
 B-019-136, Ritter Brau, 3, NE, 20.00
 B-019-138, Seattle, 6, WA, 12.00
 B-019-138, Seattle, 5, WA, 12.00
 B-019-144, Belmont, 5, OH, 25.00
 B-019-148, Crockery City, 6, OH, 35.00
 B-019-149, Des Moines, 8, IA, 20.00
 B-019-153, Leisy, 6, IL, 20.00
 B-019-155, Willow Springs, 6, NE, 25.00
 B-019-158, Hauensteins, 6, MN, 25.00
 B-019-162, Townsend, 9, MT, 25.00
 B-019-163, Willow Springs, 4, NE, 22.00
 B-019-163, Willow Springs, 3, NE, 20.00
 B-019-167, Highland, 10, IL, 40.00
 B-019-170, Minneapolis, 5, MN, 10.00
 B-019-170, Minneapolis, 5, MN, 10.00
 B-019-170, Minneapolis, 5, MN, 10.00
 B-019-170, Minneapolis Var A, 5, MN, 10.00
 B-019-170, Minneapolis Var B, 5, MN, 10.00
 B-019-170, Minneapolis Var B, 5, MN, 10.00
 B-019-177, Maier, 5, CA, 15.00
 B-019-186, Consumers, 9, XX, 20.00
 B-019-188, Eastside, 6, CA, 25.00
 B-019-195, Walla Walla, 5, WA, 30.00
 B-019-198, West Bend, 5, WI, 25.00
 B-019-202, Acme, 8, CA, 20.00
 B-019-202, Acme, 8, CA, 12.00
 B-019-202, Acme, 7, CA, 12.00
 B-019-202, Acme, 5, CA, 10.00
 B-019-217, Union, 8, IL, 40.00
 B-019-221, Muessel, 8, IN, 25.00
 B-019-223, Western, 5, IL, 25.00
 B-019-246, Fresno, 4, CA, 25.00
 B-019-272, Moer-Lo, 6, OH, 30.00
 B-019-274, Des Moines, 7, IA, 25.00
 B-019-275, Richter, 6, CA, 20.00
 B-019-999, Bob Davis Imperial, Cal., 3, CA, 5.00
 B-021-003, Aurora, 5, IL, 20.00
 B-021-004, Bartels, 7, NY, 15.00
 B-021-004, Bartels, 5, NY, 15.00
 B-021-007, Blue n Gold, 5, CA, 18.00
 B-021-008, Cleveland & Sandusky, 5, OH, 12.00
 B-021-009, Cold Spring, 5, PA, 12.00
 B-021-010, Coors, 5, CO, 10.00
 B-021-011, Diehl, 3, OH, 15.00
 B-021-016, Evansville, 4, IN, 18.00
 B-021-018, Fredericksburg, 6, CA, 20.00
 B-021-019, Fredericksburg, 8, CA, 15.00
 B-021-019, Fredericksburg, 6, CA, 12.00
 B-021-019, Fredericksburg, 6, CA, 12.00
 B-021-020, Garden City, 6, MT, 50.00
 B-021-022, Gold Bond, 8, OH, 20.00
 B-021-024, Grand Rapids, 5, MI, 20.00
 B-021-029, Hopsburger, 4, XX, 18.00
 B-021-030, Horlacher, 6, PA, 12.00
 B-021-034, Hyde Park Var A, 4, MO, 15.00
 B-021-034, Hyde Park Var B, 4, MO, 15.00
 B-021-037, Independent, 6, PA, 12.00
 B-021-037, Independent, 3, PA, 12.00
 B-021-039, Independent, 7, PA, 12.00
 B-021-039, Independent, 6, PA, 12.00
 B-021-040, Independent, 7, PA, 12.00
 B-021-041, Indianapolis, 5, IN, 15.00
 B-021-041, Indianapolis, 5, IN, 15.00
 B-021-042, Jamestown, 4, NY, 25.00
 B-021-044, Kalamazoo, 8, MI, 25.00
 B-021-046, Kings, 5, MA, 20.00
 B-021-046, Kings, 5, MA, 20.00
 B-021-052, Moerleins, 8, OH, 12.00
 B-021-052, Moerleins, 7, OH, 12.00
 B-021-054, Muskegon, 5, MI, 50.00
 B-021-055, Mutual-Union, 6, PA, 20.00
 B-021-057, Narragansett, 8, RI, 12.00
 B-021-057, Narragansett, 8, RI, 12.00
 B-021-059, National, 7, CA, 25.00
 B-021-060, Neefs, 9, CO, 20.00
 B-021-061, Olt, 5, OH, 25.00
 B-021-063, Quandts, 6, NY, 25.00
 B-021-065, Pfaffs, 5, MA, 12.00
 B-021-068, Radekes, 6, IL, 18.00
 B-021-070, Ritter Brau, 6, NE, 22.00
 B-021-072, Ruhstallers, 7, CA, 12.00
 B-021-075, Scheidt, 8, PA, 30.00
 B-021-076, Schlitz, 9, WI, 10.00
 B-021-076, Schlitz, 5, WI, 10.00
 B-021-076, Schlitz, 5, WI, 10.00
 B-021-076, Schlitz, 4, WI, 10.00
 B-021-079, Seitz, 6, PA, 18.00
 B-021-082, Tacoma Anti-Kat, 6, WA, 18.00
 B-021-083, Tacoma (Get-It!), 7, WA, 20.00
 B-021-084, Tacoma (Extra Pale), 9, WA, 22.00
 B-021-086, Tivoli, 8, MI, 18.00
 B-021-091, Weilands, 6, CA, 25.00
 B-021-094, Amsterdam, 6, NY, 20.00
 B-021-096, Becks, 7, NY, 18.00
 B-021-100, Burkhardts, 6, OH, 20.00
 B-021-105, Dicks (Name Stamped On Back), 3, IL, 15.00
 B-021-106, Glennons Var A, 7, PA, 25.00
 B-021-108, Hammond, 4, IN, 25.00
 B-021-113, Jung, 4, WI, 18.00
 B-021-116, Klausmanns, 8, MO, 18.00
 B-021-116, Klausmanns, 6, MO, 15.00
 B-021-116, Klausmanns, 5, MO, 15.00
 B-021-117, Kostenbader, 6, PA, 12.00
 B-021-117, Kostenbader, 6, PA, 15.00
 B-021-117, Kostenbader, 5, PA, 15.00
 B-021-123, Oshkosh, 6, WI, 25.00
 B-021-125, Pechstein & Nagel, 7, IA, 35.00
 B-021-126, Pfeiffer, 6, MI, 30.00
 B-021-129, Pilseners, 5, OH, 20.00
 B-021-136, Schmidt, 4, PA, 1.00
 B-021-139, Terre Haute, 7, IN, 25.00
 B-021-139, Terre Haute, 4, IN, 18.00
 B-021-141, Alpen Brau, 7, MO, 15.00
 B-021-149, Chattanooga, 5, TN, 40.00
 B-021-156, Elfenbrau, 5, WI, 18.00
 B-021-160, Fresno, 4, CA, 18.00
 B-021-163, Goetz, 5, MO, 20.00
 B-021-169, Indianapolis, 4, IN, 20.00
 B-021-170, Kaier, 7, PA, 15.00
 B-021-171, Kessler, 6, MT, 25.00
 B-021-172, Kittanning, 7, PA, 35.00
 B-021-178, Michel, 5, WI, 30.00
 B-021-183, Mutual Union, 3, PA, 15.00
 B-021-185, National, 7, MI, 20.00
 B-021-187, Northampton, 8, PA, 18.00
 B-021-192, Petersen, 4, MI, 25.00
 B-021-197, Portland, 5, OR, 30.00
 B-021-203, Renner & Weber Var B, 8, OH, 25.00
 B-021-205, Rose Bud, 9, SD, 40.00
 B-021-206, St Joseph, 5, MO, 25.00
 B-021-208, Schmidts, 5, MN, 18.00
 B-021-212, Star, 6, WA, 20.00
 B-021-216, Valley Brew, 5, CA, 40.00
 B-021-218, American, 8, MT, 20.00
 B-021-231, Clinton, 8, IA, 35.00
 B-021-236, Crescent, 4, ID, 20.00
 B-021-237, Crystal Gold, 5, OH, 20.00
 B-021-239, Dubuque, 4, IA, 18.00
 B-021-241, Eastside, 8, CA, 15.00
 B-021-241, Eastside, 6, CA, 10.00
 B-021-242, Evansville, 6, IN, 20.00
 B-021-244, Fauerbach, 5, WI, 30.00
 B-021-246, Germantown, 7, MD, 25.00
 B-021-248, Gipps, 8, IL, 30.00
 B-021-253, Hamm, 7, MN, 20.00
 B-021-257, Hocking, 6, OH, 40.00
 B-021-263, Independent, 5, PA, 15.00
 B-021-264, Inland, 7, WA, 25.00
 B-021-264, Krantz, 7, OH, 25.00
 B-021-272, Leisy, 8, OH, 25.00
 B-021-273, Lewistown, 6, MT, 40.00
 B-021-275, List, 7, XX, 25.00
 B-021-276, Los Angeles, 6, CA, 25.00
 B-021-286, National, 8, PA, 25.00
 B-021-289, Old Fashioned Beer, 2, XX, 15.00
 B-021-291, Olympia, 6, WA, 20.00
 B-021-293, Ottawa (Brew not Beer), 5, IL, 40.00
 B-021-304, Schreiers, 6, WI, 18.00
 B-021-305, Schwarzenbach, 5, PA, 25.00
 B-021-308, South Bethlehem, 6, PA, 15.00
 B-021-314, Washington, 8, OH, 25.00
 B-021-327, Hubach, 7, OH, 30.00
 B-021-345, Haberle, 4, NY, 20.00
 B-021-353, Oswald, 6, PA, 20.00
 B-021-368, Elgin, 6, IL, 40.00
 B-021-376, Gunds, 4, WI, 18.00
 B-021-382, Mt Hood, 9, OR, 30.00
 B-021-385, Reading Var B, 7, PA, 12.00
 B-021-387, Schaumloeffels, 6, XX, 20.00
 B-021-389, Tuscora, 8, XX, 25.00
 B-021-396, Hagerstown, 4, MD, 25.00
 B-021-398, Independent, 5, IA, 30.00
 B-021-417, Consumers, 8, OH, 30.00
 B-021-419, Hanley, 7, RI, 35.00
 B-021-422, Garden City, 9, MT, 60.00
 B-021-423, Hastings, 3, NE, 25.00
 B-021-432, R I B, 6, IL, 18.00
 B-021-436, Virginia, 5, MN, 40.00
 B-021-441, Crystal Lager, 5, XX, 25.00
 B-021-442, Fairmount, 4, OH, 40.00
 B-021-443, Garden City, 6, MT, 50.00
 B-021-444, Hastings, 4, NE, 25.00
 B-021-446, Independent, 6, IA, 30.00
 B-021-448, Ottawa, 5, IL, 40.00
 B-021-454, Dotterweich, 7, NY, 25.00
 B-021-462, Akron, 3, OH, 12.00
 B-021-468, Hennepin, 7, MN, 25.00
 B-021-469, Jettens, 4, NE, 30.00
 B-021-470, Kazmaier, 6, PA, 25.00
 B-021-474, Uhis, 5, PA, 35.00
 B-021-486, Independent, 5, WA, 30.00
 B-021-488, Sunset, 4, ID, 20.00
 B-021-512, Becker, 7, UT, 25.00
 B-021-513, Berkshire, 8, MA, 25.00

- B-021-519, Golden West, 6, CA, 20.00
 B-021-522, Simon, 6, NY, 20.00
 B-021-523, Rising Sun, 5, NJ, 40.00
 B-021-525, Yonkers, 5, NY, 40.00
 B-021-534, Blue Birch Beer, 6, MA, 20.00
 B-021-540, Lima, 7, OH, 35.00
 B-021-544, Bangor, 5, XX, 15.00
 B-021-999, Cascade, 5, XX, 8.00
 B-021-CAN, Carlings, 7, CAN, 10.00
 B-021-CAN, Saskatoon Beer, 6, CAN, 8.00
 B-022-003, Blumer, 8, WI, 12.00
 B-022-004, Falstaff, 6, MO, 10.00
 B-022-004, Falstaff, 5, MO, 10.00
 B-022-009, Jetters, 6, NE, 20.00
 B-022-010, Jung, 5, WI, 18.00
 B-022-010, Jung, 3, WI, 12.00
 B-022-011, Kessler, 6, MT, 18.00
 B-022-012, Leisen & Hienes, 7, MI, 25.00
 B-022-014, Minneapolis, 4, MN, 12.00
 B-022-015, Mutual-Union, 7, PA, 15.00
 B-022-015, Mutual-Union, 4, PA, 15.00
 B-022-019, Schlitz, 8, WI, 15.00
 B-022-019, Schlitz, 6, WI, 20.00
 B-022-021, Alpen Brau, 4, MO, 15.00
 B-022-022, Berghoff, 5, IN, 20.00
 B-022-024, Bowler Bros, 5, MA, 30.00
 B-022-025, Burkhardt's, 6, OH, 20.00
 B-022-026, Calumet, 7, MI, 25.00
 B-022-028, Griesedieck, 5, MO, 20.00
 B-022-029, Huebner, 7, OH, 18.00
 B-022-029, Huebner, 6, OH, 20.00
 B-022-031, Michels, 7, WI, 20.00
 B-022-033, Renner & Weber, 9, OH, 40.00
 B-022-034, Schmidts, 7, MN, 20.00
 B-022-034, Schmidts, 4, MN, 15.00
 B-022-035, Schreibers, 6, NY, 15.00
 B-022-035, Schreibers, 4, WI, 20.00
 B-022-036, Hillsboro Var B, 7, WI, 25.00
 B-022-036, Hillsboro Var A, 5, WI, 25.00
 B-022-040, Buckeye, 6, OH, 25.00
 B-022-045, Indianapolis, 8, IN, 12.00
 B-022-046, K C (Kansas City), 6, MO, 20.00
 B-022-052, Tuscora, 9, OH, 25.00
 B-022-055, American, 5, MT, 20.00
 B-022-062, Hand, 5, IL, 20.00
 B-022-064, Indianapolis, 3, IN, 20.00
 B-022-065, Indianapolis, 7, IN, 12.00
 B-022-066, Leisys, 5, IL, 20.00
 B-022-072, P O C, 7, OH, 22.00
 B-022-088, Minneapolis, 8, MN, 12.00
 B-022-088, Minneapolis, 6, MN, 10.00
 B-022-106, Famous, 5, XX, 20.00
 B-022-107, Glueks, 5, MN, 15.00
 B-022-115, Pechstein & Nagel, 2, IA, 20.00
 B-022-117, Bunker Hill, 9, MA, 40.00
 B-022-999, E M Hartman 2261 Shelby St, 4, XX, 8.00
 B-022-CAN, Cascade/Vancouver, 7, CAN, 15.00
 B-023-002, Bartholomay, 5, NY, 15.00
 B-023-003, Blumer, 6, WI, 10.00
 B-023-003, Blumer, 5, WI, 10.00
 B-023-005, Centlivre, 7, IN, 22.00
 B-023-007, Duquesne, 6, PA, 12.00
 B-023-008, Ehret, 8, NY, 10.00
 B-023-008, Ehrets, 7, NY, 12.00
 B-023-010, Golden Glow, 8, CA, 22.00
 B-023-010, Golden Glow, 4, CA, 15.00
 B-023-015, Kessler, 9, MT, 22.00
 B-023-016, King of Clubs, 7, WI, 18.00
 B-023-017, Mausners, 7, IN, 15.00
 B-023-018, Miller, 8, WI, 10.00
 B-023-018, Miller, 7, WI, 8.00
 B-023-018, Miller, 5, WI, 8.00
 B-023-020, Miller, 4, WI, 8.00
 B-023-020, Miller, 4, WI, 8.00
 B-023-022, Old Style, 8, WI, 15.00
 B-023-022, Old Style, 6, WI, 12.00
 B-023-022, Old Style, 3, WI, 10.00
 B-023-023, Oshkosh, 9, WI, 20.00
 B-023-024, Overland, 7, ID, 22.00
 B-023-025, Piels, 7, NY, 12.00
 B-023-026, Renner, 6, OH, 18.00
 B-023-027, Schreibers, 7, NY, 15.00
 B-023-028, Schreibers, 8, NY, 15.00
 B-023-033, Blumer, 6, WI, 12.00
 B-023-033, Blumer, 4, WI, 10.00
 B-023-033, Blumer, 4, WI, 10.00
 B-023-034, Brucks, 4, OH, 12.00
 B-023-035, Buckeye, 4, OH, 22.00
 B-023-036, Ebner, 9, WI, 25.00
 B-023-036, Ebner, 6, WI, 18.00
 B-023-036, Ebner, 6, WI, 18.00
 B-023-039, Golden Grain Juice, 5, MN, 12.00
 B-023-043, Minnehaha, 7, MN, 18.00
 B-023-047, Ruff-Riedel, 5, IL, 25.00
 B-023-047, Ruff-Riedel (Hook Filed), 3, IL, 10.00
 B-023-048, Tuscora, 8, OH, 15.00
 B-023-048, Tuscora, 7, OH, 15.00
 B-023-048, Tuscora, 6, OH, 18.00
 B-023-055, Griesedieck, 7, MO, 22.00
 B-023-058, South Fork, 9, PA, 22.00
 B-023-058, South Fork, 7, PA, 20.00
 B-023-059, Atlas, 8, IL, 15.00
 B-023-059, Atlas, 4, IL, 10.00
 B-023-059, Atlas, 4, IL, 10.00
 B-023-059, Atlas, 4, IL, 10.00
 B-023-060, Berghoff, 5, IN, 15.00
 B-023-061, Blue Ribbon Malt, 4, PA, 15.00
 B-023-062, Brucks, 6, OH, 12.00
 B-023-062, Brucks, 6, OH, 12.00
 B-023-064, Coors, 8, CO, 10.00
 B-023-065, Genesee, 6, NY, 12.00
 B-023-068, Golden Glow, 8, CA, 12.00
 B-023-068, Golden Glow, 8, CA, 12.00
 B-023-069, Hamms, 6, MN, 15.00
 B-023-073, Michel, 6, WI, 18.00
 B-023-073, Michel, 4, WI, 15.00
 B-023-073, Michel, 4, WI, 15.00
 B-023-076, Overland, 6, ID, 20.00
 B-023-081, White Banner, 4, MO, 10.00
 B-023-083, American Food, 7, IL, 18.00
 B-023-089, Jetters, 8, NE, 30.00
 B-023-090, Jung, 9, WI, 25.00
 B-023-104, Wausau, 9, WI, 18.00
 B-023-111, Langs, 7, NY, 15.00
 B-023-121, P O C, 3, OH, 18.00
 B-023-124, Goetz, 3, MO, 15.00
 B-023-128, American Food, 3, IL, 15.00
 B-023-132, Rainier, 6, CA, 18.00
 B-023-158, Kauno Bohemian Malt, 5, XX, 18.00
 B-023-168, American Food, 8, IL, 18.00
 B-023-169, Burkhardt's, 8, OH, 22.00
 B-023-192, Glennons, 4, PA, 25.00
 B-023-999, Hardings, 9, IL, 12.00
 B-023-999, Drink Ale 81 (Spinner), 8, KY, 20.00
 B-023-CAN, Lethbridge, 7, CAN, 10.00
 B-024-001, Acme, 9, CA, 8.00
 B-024-001, Acme, 8, CA, 5.00
 B-024-001, Acme, 8, CA, 5.00
 B-024-001, Acme, 8, CA, 5.00
 B-024-003, Berlin, 9, WI, 12.00
 B-024-004, Buffalo, 6, CA, 25.00
 B-024-005, Burgermeister, 5, CA, 8.00
 B-024-005, Burgermeister, 5, CA, 8.00
 B-024-006, Burkhardt's, 8, OH, 8.00
 B-024-006, Burkhardt's, 8, OH, 10.00
 B-024-007, Iroquois, 7, NY, 40.00
 B-024-008, Carnegie, 6, PA, 12.00
 B-024-008, Carnegie, 5, PA, 12.00
 B-024-009, Dawsons, 5, MA, 8.00
 B-024-010, Dutch Club, 8, PA, 10.00
 B-024-011, Edelweiss, 6, IL, 25.00
 B-024-012, Effinger, 7, WI, 15.00
 B-024-013, G B, 7, CA, 8.00
 B-024-013, G B, 6, CA, 5.00
 B-024-013, G B, 5, CA, 5.00
 B-024-015, Glueks, 8, MN, 8.00
 B-024-015, Glueks, 6, MN, 5.00
 B-024-015, Glueks, 6, MN, 5.00
 B-024-016, Golden Glow, 6, CA, 5.00
 B-024-016, Golden Glow, 6, CA, 5.00
 B-024-016, Golden Glow, 6, CA, 5.00
 B-024-017, Griesedieck Bros, 8, MO, 8.00
 B-024-017, Griesedieck Bros, 5, MO, 5.00
 B-024-017, Griesedieck Bros, 4, MO, 5.00
 B-024-018, Homestead, 7, PA, 15.00
 B-024-018, Homestead, 6, PA, 15.00
 B-024-020, Iron City, 6, PA, 8.00
 B-024-020, Iron City, 6, PA, 8.00
 B-024-021, Kingsbury, 8, WI, 8.00
 B-024-021, Kingsbury, 6, WI, 8.00
 B-024-021, Kingsbury, 4, WI, 8.00
 B-024-022, Lucky Lager, 6, CA, 8.00
 B-024-022, Lucky Lager, 6, CA, 5.00
 B-024-023, Mathie-Ruder, 5, WI, 10.00
 B-024-026, Narragansett Var A, 8, RI, 6.00
 B-024-026, Narragansett Var B, 7, RI, 6.00
 B-024-026, Narragansett Var B, 6, RI, 5.00
 B-024-026, Narragansett Var B, 6, RI, 5.00
 B-024-026, Narragansett Var B, 6, RI, 5.00
 B-024-027, Old Tap, 9, MA, 8.00
 B-024-027, Old Tap, 6, MA, 8.00
 B-024-028, Pickwick, 3, MA, 8.00
 B-024-030, Rainier, 9, CA, 10.00
 B-024-030, Rainier, 8, CA, 15.00
 B-024-030, Rainier, 5, CA, 12.00
 B-024-032, Schmidt, 8, MN, 6.00
 B-024-032, Schmidt, 7, MN, 6.00
 B-024-032, Schmidt, 7, MN, 6.00
 B-024-033, Schmidt Var A, 7, IN, 8.00
 B-024-033, Schmidt Var B, 7, IN, 8.00
 B-024-033, Schmidt Var A, 6, IN, 10.00
 B-024-033, Schmidt Var A, 6, IN, 10.00
 B-024-033, Schmidt Var B, 5, IN, 10.00
 B-024-034, Walters, 9, WI, 12.00
 B-024-035, Walters, 8, CO, 12.00
 B-024-036, Yuengling, 6, PA, 12.00
 B-024-037, Acme Los Angeles, 8, CA, 20.00
 B-024-042, Duquesne, 5, PA, 12.00
 B-024-043, Hamms, 6, MN, 15.00
 B-024-043, Hamms, 5, MN, 15.00
 B-024-043, Hamms, 5, MN, 15.00
 B-024-044, Heileman, 6, WI, 12.00
 B-024-044, Heileman, 6, WI, 8.00
 B-024-044, Heileman, 5, WI, 8.00
 B-024-044, Heileman, 4, WI, 8.00
 B-024-046, Muehlebach, 5, MO, 12.00
 B-024-047, Pointer, 8, IA, 12.00
 B-024-047, Pointer, 5, IA, 12.00
 B-024-047, Pointer, 4, IA, 12.00
 B-024-048, Wagner, 5, IL, 12.00
 B-024-048, Wagner, 4, IL, 15.00
 B-024-050, Cassville, 4, WI, 40.00
 B-024-051, Iron City, 6, PA, 10.00
 B-024-052, Mathie-Ruder, 7, WI, 12.00
 B-024-053, Mathie-Ruder, 7, WI, 12.00
 B-024-055, Pointer, 6, IA, 12.00
 B-024-055, Pointer, 5, IA, 15.00
 B-024-056, Salem, 7, OR, 12.00
 B-024-057, Acme San Francisco, 6, CA, 20.00
 B-024-060, Burgermeister, 6, CA, 10.00
 B-024-060, Burgermeister, 4, CA, 8.00
 B-024-063, Dicks, 9, IL, 20.00
 B-024-063, Dicks, 5, IL, 15.00
 B-024-063, Dicks, 3, IL, 12.00
 B-024-064, Dutch Club, 4, PA, 10.00
 B-024-070, Old Shay, 5, PA, 10.00
 B-024-072, Wausau, 7, WI, 12.00
 B-024-075, Becker, 5, WY, 20.00
 B-024-080, Overland, 8, ID, 25.00
 B-024-087, Hillsboro, 8, WI, 25.00
 B-024-089, Storz, 7, NE, 10.00
 B-024-090, Atlas, 5, IL, 18.00
 B-024-093, Edelweiss, 8, IL, 15.00
 B-024-093, Edelweiss, 5, IL, 12.00
 B-024-102, Yuengling, 8, PA, 25.00
 B-024-CAN, Extra Pale / Pilsener, 9, CAN, 8.00
 B-025-002, Buckeye, 8, OH, 40.00
 B-025-006, Gippes, 6, IL, 35.00
 B-025-008, Atlas (Opener Tip Filed), 4, IL, 25.00
 B-027-001, Miller Var A, 9, WI, 30.00
 B-027-001, Miller Var A, 2, WI, 12.00
 B-027-001, Miller Var B, 1, WI, 12.00
 B-029-999, La Plata Bottling Works Durango CO, 4, CO, 30.00
 B-030-002, Capitol City, 7, MO, 25.00
 B-030-009, Peerless, 6, WI, 25.00
 B-030-999, Insist On Superfine Extra Dry Kenwood 6098, 6, XX, 15.00
 B-030-CAN, Drewrys, 7, CAN, 10.00
 B-033-001, Schoenhofen, 8, IL, 20.00
 B-033-001, Schoenhofen, 5, IL, 15.00
 B-033-001, Schoenhofen, 3, IL, 12.00
 B-033-001, Schoenhofen, 1, IL, 10.00
 B-033-002, Heilemans Var A, 5, WI, 20.00
 B-033-002, Heilemans Var B, 4, WI, 20.00
 B-035-004, Storz, 7, NE, 10.00
 B-035-004, Storz, 7, NE, 10.00
 B-035-006, Goetz, 9, WA, 15.00
 B-035-999, Ajax, 8, XX, 3.00
 B-036-002, Rockford, 5, IL, 20.00
 B-036-004, Standard, 6, XX, 15.00
 B-042-003, Storz, 9, NE, 20.00
 B-042-010, Blue Ribbon Malt, 6, PA, 30.00
 B-042-999, National Selling Co Allentown, 6, PA, 15.00
 B-046-001, Rainier, 7, WA, 50.00
 B-046-999, Keystone Steel Wire Peoria, 5, IL, 12.00
 B-047-001, Hamms, 6, MN, 20.00
 B-051-CAN, Copland Budweiser, 6, CAN, 75.00
 B-052-006, Wiedemann, 7, KY, 40.00
 B-053-001, Gippes, 8, IL, 35.00
 B-055-004, Busch, 8, MO, 3.00
 B-055-007, Lite, 8, WI, 3.00
 B-060-002, Eagle Var A, 9, NY, 40.00
 B-060-003, Strak-Tuscarawas, 6, OH, 40.00
 B-060-004, Feigenspan, 2, NJ, 20.00
 B-063-004, Clauss, 8, PA, 18.00
 B-063-005, Clinton, 8, IA, 20.00
 B-063-009, Indianapolis, 6, IN, 20.00
 B-063-010, Jetters, 7, NE, 30.00
 B-063-010, Pt Huron, 2, MI, 25.00
 B-063-011, Northampton, 6, PA, 20.00
 B-063-011, Northampton, 5, PA, 20.00
 B-063-012, Schaller, 6, OH, 40.00
 B-065-CAN, Drink Silver Foam Beverages, 6, CAN, 20.00
 B-069-001, Michelob, 6, MO, 12.00
 B-502-999, Nesbitts, 5, CA, 10.00
 M-005-001, Tivoli, 6, CO, 12.00
 N-008-999, Blank, 4, XX, 8.00
 N-020-999, Jim Dandy, 4, XX, 8.00
 P-008-208, So Cal Wine, 2, CA, 5.00
 P-051-009, Adloff & Hauerwaas, 8, CA, 40.00

JUST FOR OPENERS

34th ANNUAL CONVENTION REGISTRATION

APRIL 18-April-22, 2012

The Palms Casino Hotel

4321 W Flamingo Rd Las Vegas NV 89103

(1-702-942-7064 or 1-866-942-7770 Request Just For Openers to Get in Room Block)

Airport Transportation: Shuttle \$10 each way or Taxi Cab \$20 each way

(Rate is \$109.00 for a Single, Double, (3rd or 4th person \$30 each Additional)
 (High Speed Internet Included) (Rate Good for 3 Days Before and 3 Days After Convention)
 (Hotel Cutoff Date is March 19th, 2012)

(Tell them you are with the Just For Openers Group)

MAKE LAS VEGAS NEVADA YOUR NEXT STOP ON THE JFO CONVENTION TRAIL

MEMBER REGISTRATION FEE - **\$45.00 (For One or with Spouse/Partner/Family)**
 (MEMBER INCLUDES HOSPITALITY ROOM, CONVENTION OPENER & 1 SHOW TABLE)
 (SPOUSE/PARTNER INCLUDES USE OF HOSPITALITY ROOM) (NOTE:CHILDREN ARE FREE)

NAME/(SPOUSE/PARTNER) _____

ADDRESS _____

CITY _____ STATE(PROVINCE) _____ ZIP _____

EVENING PHONE NUMBER _____

DATE YOU WILL ARRIVE _____ APPROXIMATE TIME _____

DATE & TIME YOU WILL LEAVE _____ (NEED FOR PLANNING PURPOSES)

HOW WILL YOU ARRIVE? CAR _____ PLANE _____ TRAIN _____ OTHER _____

IF PLANE? AIRLINE _____ FLIGHT # _____ ETA _____

NAME(S) FOR CONVENTION BADGE(S): _____

HOSPITALITY ROOM DRINK Brands: Beer: _____ Soda/Water: _____

MAKE CHECKS PAYABLE TO John Stanley, Send Checks to:
 JFO 34 PO Box 51008 Durham NC 27717
 Phone (919) 419-1546 or (919) 824-3046 (Cell)

******* BRING A DISPLAY !!!*******

“34th Just For Openers Convention Registration (Page 2)”

Convention Wish List

List up to 10 Openers/Corkscrews

01) _____	06) _____
02) _____	07) _____
03) _____	08) _____
04) _____	09) _____
05) _____	10) _____

34th JFO Convention Las Vegas Tentative Schedule

Tuesday-Wednesday: Checks-Ins & Room-To-Room Trading

Thursday: Check-Ins Completed & Room-To-Room Trading

Friday: Room-To-Room Trading & Friday Mini-Auction (Late Afternoon)

Saturday: Public Show 8AM-2PM (No Charge) & Group Dinner that Evening

Sunday: Convention Opener and Start Planning for Nashville Tennessee

**It is the 34th Annual JFO Convention
We Hope it is Your Intention**

**To Join Your Collector Friends
Or You Will Miss Being There in the End**

**John Cartwright and Stanley Have Been Working on this for a Long Time
They Say Going to Las Vegas will be Really Divine**

**Members Hold So Much Knowledge and Love of this Hobby
As Long Time Friends Arrive, there will be Lots of Hugs in the Lobby**

**It Won't be as Much Fun if You Aren't There
To This we Solemnly Swear**

**Don't Gamble Away this Sure Chance for Fun
Make Sure Your Travel Plans are Done**

**Las Vegas or Bust
In Our Collections We Trust**