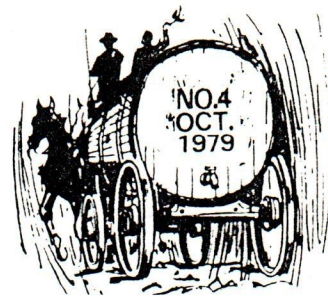


Just for Openers



In the January, 1979 premier issue of "Just for Openers" I indicated that this newsletter would be a means of continually updating BEER ADVERTISING OPENERS. I would never have expected so many new types to turn up for the "Discoveries" section. In the first three issues 86 new types were added and in this issue will be found another 25. You will note that these additions come from a very small number of collectors - I am sure others of you have some types not shown before - let me hear from you.

Our circulation is now 205: 176 listed in the directory and updates, and 29 anonymous. If you are subscriber and your name is not listed in the directory, and you wish to be, please advise.

A 1980 subscription dues renewal form is enclosed with this issue. Please send this in as soon as possible (do it now) so I can better plan for the first 1980 issue and ensure listing of your name in new directory if so desired.

Many people correctly identified the object on page 6 of the July issue as a bottle capper. I thank all of those who wrote about this and all of those who sent information for this issue and future issues. I regret that time does not always allow a speedy individual reply to your letters - but please do the news coming. Have you considered placing an ad? - only 10¢ per word.

As you see the price of openers go up, have you ever wondered what they cost when produced? The price schedule below is from a March, 1965 opener order form for Anheuser-Busch wholesalers:



ANHEUSER-BUSCH, INC. WHOLESALERS CAN AND BOTTLE OPENER ORDER FORM



Length — 3-1/4"
Width — 11/16" (approx.)
Weight — 35 lbs. per M

PRICE SCHEDULE

Quantity prices apply for any combination of imprints and/or plain openers.	1 M - 4 M	\$10.75 per M
	5 M - 9 M	10.45 per M
	10 M - 24 M	10.20 per M
	25 M - 49 M	10.05 per M
	50 M & Over	9.90 per M

Standard Packing — 1 M per Carton
500 Openers per Crtn. — Add \$.20 per M
250 Openers per Crtn. — Add \$.40 per M

Terms — 1 % / 10 N 30 FOB N.Y., N.Y.
or Chicago, Ill.

- Sharp pointed can tapper for effortless opening of Aluminum or Tin Top cans.
- Angled bottle opener fits any size neck.
- "Ears" prevent opener dropping into bottle.

IMPORTANT: Sold only in States where imprinted openers are legal. Openers without imprinting are available for States where imprinted openers are illegal.

Submit materials for first 1980 issue to Don Bull, 63 October Lane, Trumbull, CT 06611.

by
Art Santen

As my plane circled New York harbor and I saw the Statue of Liberty and New York for the first time, I wondered if the trip from St. Louis for the August 18th Just for Openers convention would be worthwhile.

I arrived on the 17th and after a trip by limosine to Fairfield and a short and cold swim in the motel pool, Don Bull drove me over to his house. I met Don's wife Bonnie and then we met Tom and Judy Lothridge, and Don Fehr and his son at the motel. From there we went to a restaurant for supper and afterwards to the Bulls house for a tour of the opener collection. We called it quits late Friday night.

Saturday morning we went to the Rotary Club flea market in Fairfield and then to the Bulls for the trade session. There we were joined by Leonard and Gladys Carpenter. The highlight of the trip was sitting on the Bulls' family room floor and in Don Fehr's mobile home trading openers.

After the trading session, Bonnie served a great meal to top off a wonderful convention.

I returned to St. Louis with 280 new openers and eight new friends who attended the convention. The friendliness of my new found friends left no doubt in my mind that this trip was well worth while.

It was agreed at this convention that a second convention should be held in a more central location if we hope to have greater attendance at future meets. And it was agreed that the St. Louis Chapter of the Opener Collectors Club would host the 2nd National Convention in April of 1980. Ollie Hibbeler will be the sponsor for this convention and your early indications to him of intentions to attend will help him considerably in his planning.....Art Santen

NEW MEMBERS

ANDERSON, Will, P.O. Box 352, Croton Falls, NY 10519.....
ANDERSON, Verner J., 2046 N.W. Kline St., Roseburg, OR 97470.....(503) 673 6336
BAUER, John P., Rt 2, Box 802K, Klamath Falls, OR 97601.....(503) 882 4507
BIDDLE, John F., 1016 Daniel Drive, Petaluma, CA 94952.....
HUMMEL, Melvin, 81 Kohler St., Tonawanda, NY 14150.....(716) 692 5470
MAYS, Mike, Rt 2, Box 456, Mechanicsville, MD 20659.....(301) 884 4522
REUTER, Mike, 9075 Main Bayview Road, Southold, NY 11971.....(516) 765 1623
RUKAVINA, Stephen J., 4421 W. 101st St., Oak Lawn, IL 60453.....
SHERK, Lawrence, P.O. Box 191 Station G., Toronto, Ont, Canada M4M 3G7 (416) 4653386
SHENK, Frank T., 378 W. North St., Carlisle, PA 17013.....(717) 243 9765
STAHLY, Robert J., 1508 E. Bridge St., Streator, IL 61364.....(815) 672 4323
TIDD, James W., RFD 1, Beverly, OH 45715.....783 3234
ZRUNO, Tom, 48781 I-94 Service Dr., Apt. 312, Belleville, MI 48111..(313) 699 5127

DIRECTORY CHANGES

Change "Budman" to NICHOLS, Ed, 983 East 31st St., Brooklyn, NY 11210
Change phone number for Ed Kaye to (612) 588 2821

BUY - SELL - TRADE MART (10 cents per word)

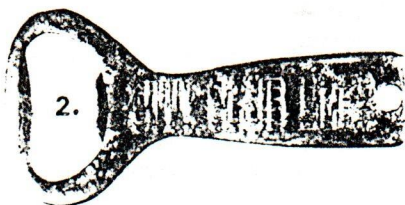
WANTED - Cast Iron Toy Cap Pistols. Buy or trade advertising openers. Bob Carter, 3809 Spring Meadow Drive, Ellicott City, MD 21043

FOR TRADE: E-4-71, E-14-5, E-14-68, E-14-113, I-1-1, I-12-20, I-12-60, I-13-35, I-17-17, and dozens of others. Trade lists exchanged. Glenn Walling, 3200 Columbus, Bakersfield, CA 93306

OPENERS: E-2 Type Primo - \$4.00 each + .28¢ post; Schlitz type N-23, 18 wheel truck - 3" long - \$12.50 each + \$1.00 post. Reasonable trades considered.

Don Reed, 3437 Raymond St., Laureldale, PA 19605

TYPES WANTED: C-3, C-23, C-26, D-8, E-17, F-5, F-10, F-14, G-10, H-9, K-6, L-5, M-types: 5,7,8,20,28,31,33,36,41,44,50, N-types: 1,6,7,15,22, 26, 0-1, 0-6, 0-7, P-2, P-3, P-11, R-5, A-types: 11,14,19,22,24,25,26,30,32, 33,34,37,36, B-types: 9,10,11,15,16,17,25,28,32. Don Bull, 63 October Lane Trumbull, CT 06611



1. Tap knob with opener attached. from International Breweries, Inc. Were they made as openers for a special event or were they fabricated in someone's basement? I have seen two.....DB
2. Is a double print "City Club Beer" as valuable as a 1955 double date Lincoln cent? (Murphy)
3. Wartime bottle opener. Saving metal by use of wood and one small nail. (Carter)
4. A bottle - bottle opener. With this opener you always need two bottles of beer in order to open one. Opener is in the bottom. (Reed)
5. A Piels copper plated opener in original package. (Fehr)

Below: Phil Fouch when visited by Don Bull during Detroit NABA convention. A nice collection and a beautiful display job.



5.



DISCOVERIES

- A-39 "A. Gettelman Brewing Co." Turtle, screw drivers. (Bull)
B-35 "Star Beer, Lancaster, Pa." Corkscrew / cap lifter. (Reed)
B-36 "Cardinal Beer." Corkscrew / cap lifter. (Grove)
C-28 "Mound City Malt Syrup." Screwdriver - square hole at bottom (see C-4). (Bull)
C-29 "Gold Bond Beer / The Cream of Table Beers." (compare to C-4). (Bull)
D-8 "Foss-Schneider Brewing Co. / Cincinnati, Ohio." (Cardone)
E-18 "Hoster-Columbus Gold Top Beverages." (Cardone)
E-19 "American Brewing Co., New Orleans, Drink Regal Lager Beer." Wood handle. (Fehr)
F-15 "E. Ferranti, Ballantine Distributors, 2000 East Third St., Williamsport, 9802-28840." Combo spoon mfr'd by B & B, St. Paul, Minn., U.S.A. (Reed)
G-13 "American Brewing Co." (Bull). Also: "Perfection." (Walling). (Many of these openers have cropped up with the inscription "Perfection" on them and I had always thought it to perhaps be something other than beer as I had never heard of another ad on this style opener. I came across the American Brewing Co. ad opener shortly after Glenn Walling pointed out that the lettering on the Perfection opener is the same as the lettering on Horlacher Brewing Company's can for this brand. Good going, Glenn! A third find for this type was made by Bill McKienzie: "Original Manitou Pale Dry" from Manitou Springs, Colorado.)
I-25 "Northampton Brewery Corp., Northampton, Pa., Tru-Blue Beer Ale." Pat. No. 2,002,173. (Bull)
M-49 "Utica Club." Retractable type opener. (Reed, Grove)
M-50 "Schmidt's of Philadelphia." Plastic handle. (Reed)
M-51 "Andeker Beer Supreme now brewed in America for discriminating tastes." Plastic handle. (Grove)
M-52 "Compliments of The Kansas City Breweries Company." Bone handle. (Fehr)
M-53 "Schlitz, Milwaukee, U.S.A." Mfr'd by Colonial, Prov., RI. (Bull)
M-54 "Stroh's Beer, Detroit, Mich. 48226." Mfr'd by Colonial. (Bull)
N-22 "Enterprise Brewing Co., Fall River, Mass." Combination pencil and opener. (Ojala)
N-23 "Schlitz, 1952." Truck with knife blade and opener blade mfr'd by Colonial, Providence. (Reed)
N-24 "Stag Beer." Combination opener and single blade knife. (Ojala)
N-25 "Coors Beer." Knife/opener. (Reed). Also: "Budweiser, King of Beers" (Nichols)
N-26 "Drink brewery fresh Richbrau Beer, favored for its flavor." Combination cap lifter, pry, and jar lid aid. (Reed)
O-9 "Stegmaier Gold Medal Beer, Wilkes-Barre, Pa." Marked: Walden, Cambridge 38, Mass. Note that this opener is shown in the Handy-Walden catalog on page 107 of BEER ADVERTISING OPENERS. When interviewed before publication of the book Mr. Elliot Baritz of Handy-Walden could not recall an order for this style opener with beer advertising. Has anyone seen another? (Bull)
P-26 "American Brewing Co., Phila. Pa." Three blade and corkscrew. Factory scene on reverse. (Bull)
P-27 "Beck's Beer, A Masterpiece of the Brewer's Art / same" Knife blade, corkscrew, cap lifter. (Reed)

I wish to thank Albert Immel for being so observant and pointing out the following errors in type number assignments in previous issues:

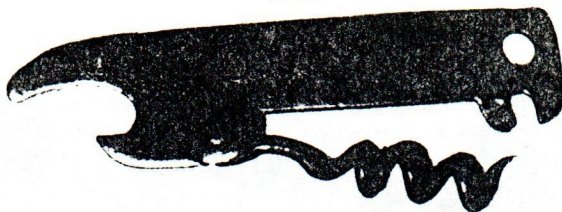
1. F-13 was assigned to the opener on page 3 of the April issue and to the Atlas opener on page 4 of the July issue. Change the Atlas to type F-14.
2. In January the Ballantine floating fish knife on page 6 was assigned type N-12. N-12 was already used on page 57 of BEER ADVERTISING OPENERS. Change the fish knife to type N-27.
3. N-17 was assigned to the Gold Top opener on page 5 of the April newsletter. This number was already assigned to the Belaying Pin on book page 100. Change the Gold Top to type N-28.

Additions and corrections to the "Discoveries" section are always welcome.

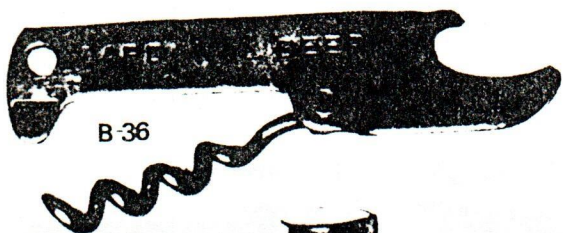
A-39



B-35



B-36



C-28



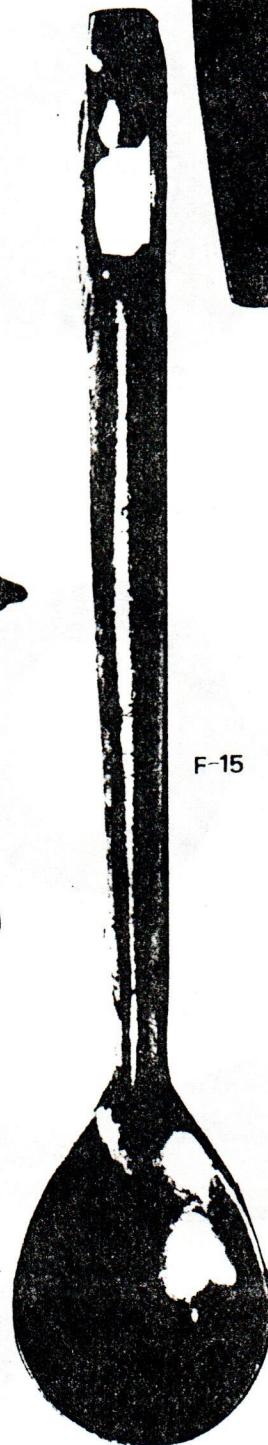
C-29



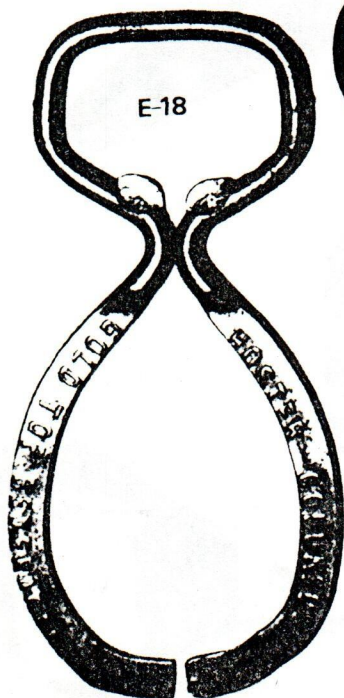
D-8



F-15



E-18

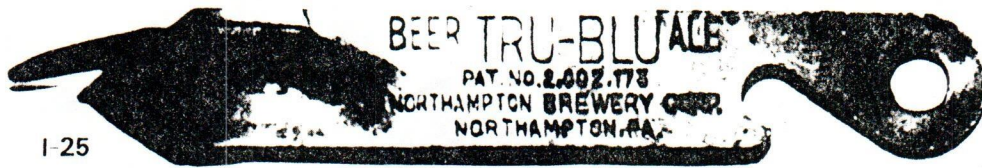


E-19



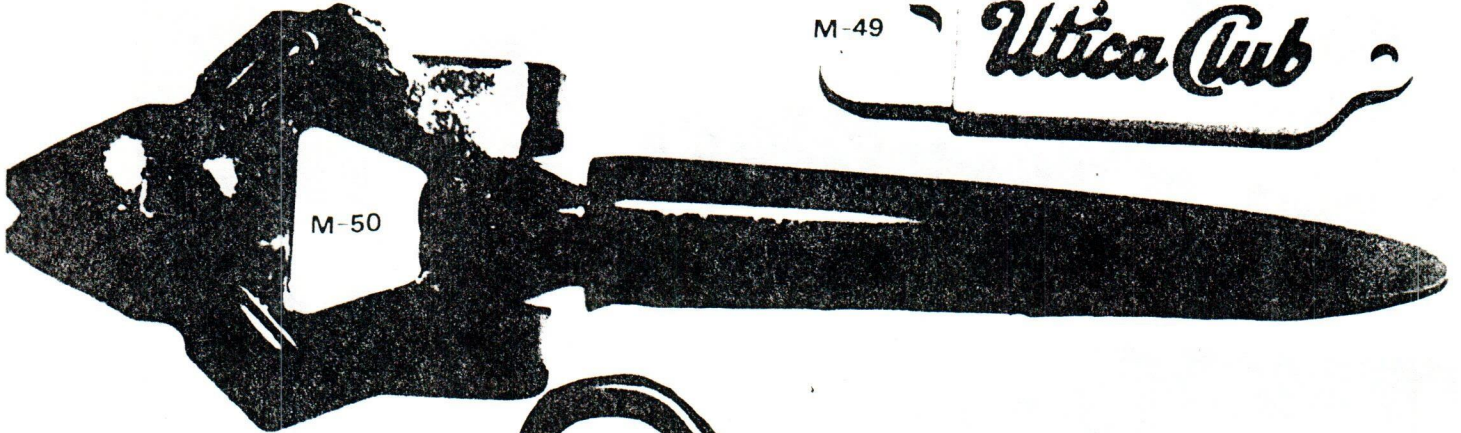
G-13



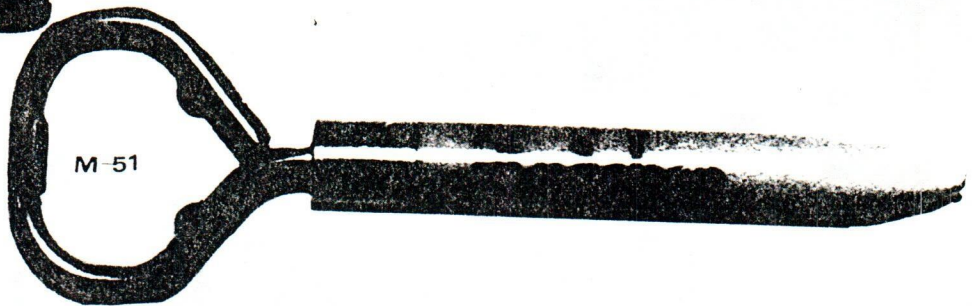


I-25

M-49



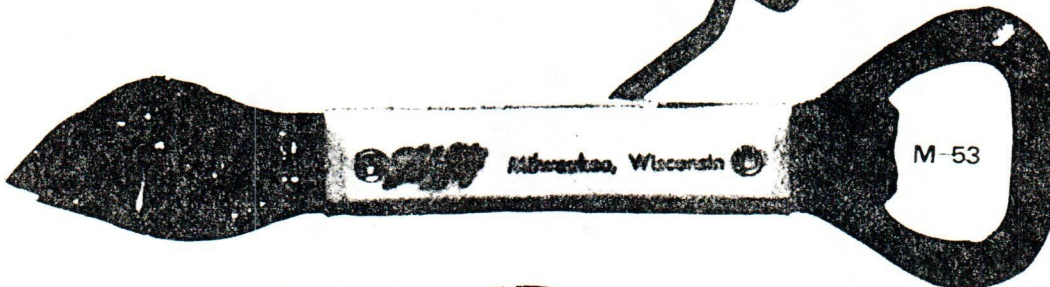
M-50



M-51



M-52

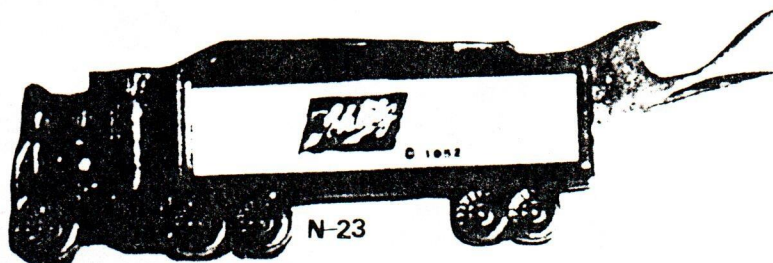


M-53

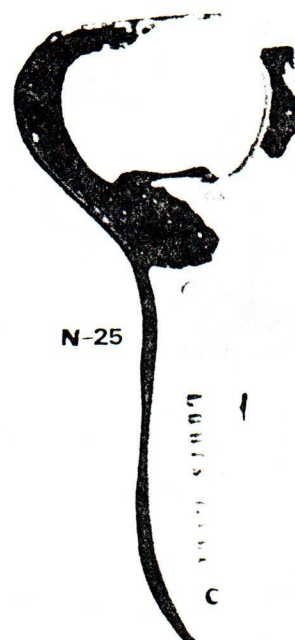


M-54

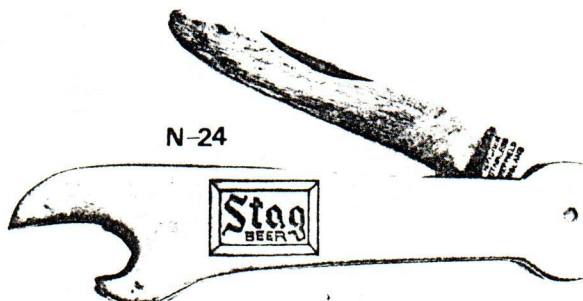
N-22



N-25



N-24



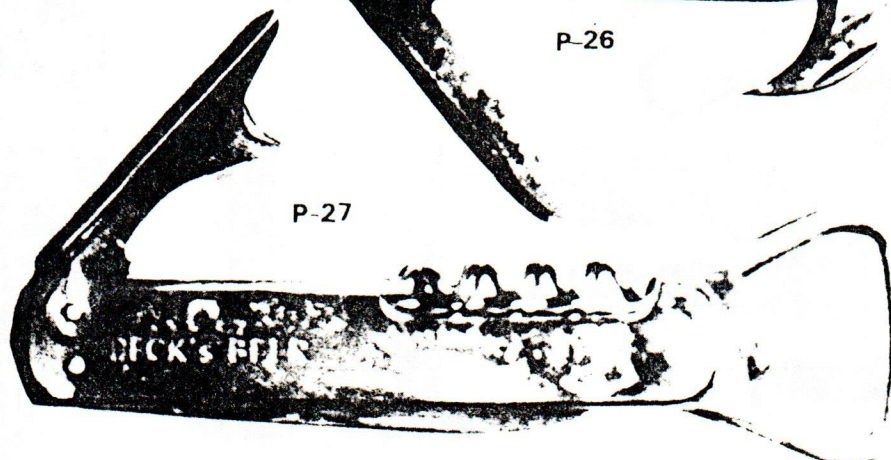
N-26



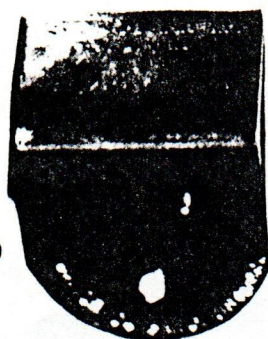
P-26

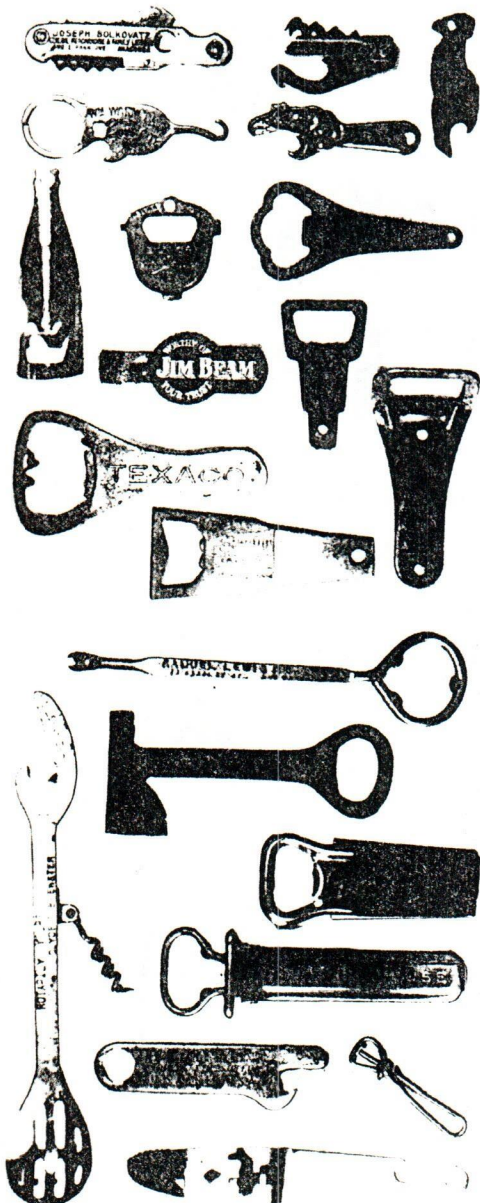
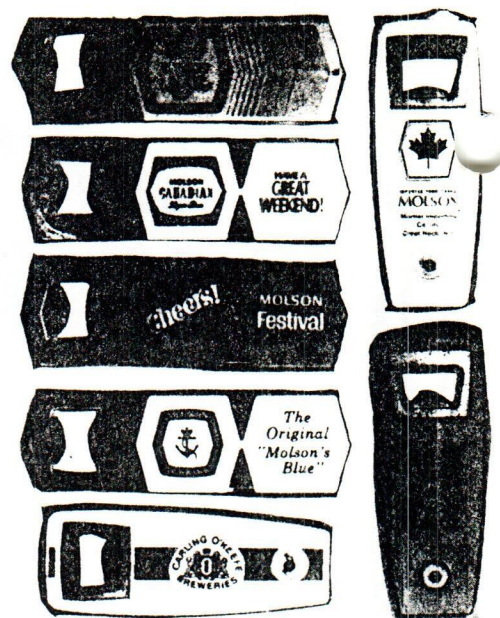


P-27



O-9





Here are a few more foreign beer advertising openers (above) and general openers (left and below). The Labatt Long Beach has the opener in the bottom and was given to the press corps at the race (Grove). The Molson corkcREW is a fine old piece (Reed). The Dortmund is a retractable mini bottle. On the above right are some recent Canadian openers - seen any others? Does anyone know the Wm. Warnock Co. of Sioux City, Iowa advertised on the B type opener to the left? Wouldn't it be nice to find one like this with a beer ad? The VFW donor opener with screwdriver seems to be quick common. The small White Rock girl opener is the baby sister of the larger more commonly seen type. Can you identify the advertiser on the hatchet opener - one side is marked "Cento" and the other "High Life"? On the lower right is a portion of the Bull collection in its new home. Openers are mounted on pegboard using standard Christmas ornament hooks.

