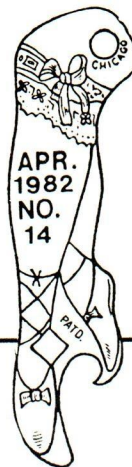


Just for openers

P.O. BOX 106 TRUMBULL, CONNECTICUT 06611



Have you finalized your plans for the Indy convention? Joe has gotten a lot of press on the event and all indications are for a strong turnout. Quite a few JFOers have signed up and a number of "outsiders" have expressed their intention to come. An article in the Feb. 28 issue of the Indianapolis Star brought Joe many local inquiries. Don't miss it - see enclosed form.

Pardon my blooper....The B-21 openers which were listed in JFO #5 were inadvertently omitted from the compilation presented in the January, 1982 issue. B-21 #140 - #157 as listed in issue 5 will be assigned new numbers beyond the present sequence.

Harold Brydon has turned up Olympia Key #603 (see BAO page 101 and JFO #13). BUT.. Harold's is a B-21 type whereas those previously reported were B-18s. Harold wrote to Olympia and was informed that his opener was issued to Mr. W.C. Yeomans of Pe Ell, Washington in 1906.

BUY - SELL - TRADE

10¢ per word - deadline for July, 1982 issue is June 1, 1982.

NOTICE - Bring all your Missouri openers and corkscrews to the convention and take home the openers you've been looking for since starting to collect them. See Bob Chapman, 2225 Entity Ave., St. Louis, MO 63114.

TRADE - Will trade unlisted M-3 Sheridan Export Beer, Sheridan, Wyoming for best offer in cigar box openers. Also trade other beer openers for C.B.O.s. Glen Enloe, 10530 E. 9th St., Independence, MO 64053.

WANTED - Hyde Park Brewing, Reading, Pa. Purety Beer Needed - any shape - form - variations of openers. Buy or trade your choice of mine. Don Reed, 3437 Raymond, Laureldale, PA 19605.

SELL - Best acceptable offer by April 30: L-4 Manhattan Pale Dry Beer, Manhattan Brewing Co., Chicago (Unlisted). Painted label, very good condition. Ray Frederick, 9801 Dahlia Ave., Palm Beach Gardens, FL 33410

WANTED - Corkscrews. Write me regarding a corkscrew for trade or sale and receive one E type opener free - just for writing. Joe Balaban, 8305 Christiana Lane, Indianapolis, IN 46256.

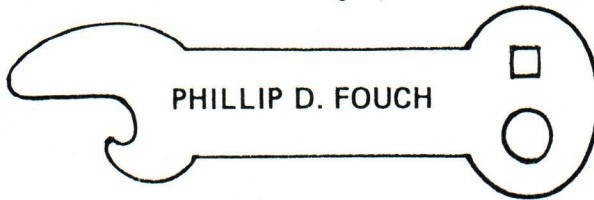
NOTICE - Brau Haus Auction #6 is coming! Scheduled for May-June, 1982. Send \$5.00 for your copy of catalog. Herb Ashendorf, 21 Montclair Road, Yonkers, NY 10710.

WANTED - The following types: A-11, 19, 22, 34, 36, 37; B-10, 36, 37, 38, 28; C-3, 26, 29, 30, 27; D-10, 11; E-19, 22, 24; F-14, 15, 16, 19, 22; H-9; K-4, 6, 7, 8; L-5; M-8, 26, 28, 41, 44, 46, 50, 51, 57, 58, 60, 61, 62; N-1, 7, 15, 21, 22, 24, 32, 36, 39, 41, 42; O-1, 7; P-11; R-5. Help me complete my type collection - will trade out of my collection. Don Bull, P.O. Box 106, Trumbull, CT 06611.

Deadline for the July issue is June 1, 1982. Submit all news, discoveries, classifieds, etc. to:

Donald Bull
P.O. Box 106 (for UPS: 63 October Lane)
Trumbull, CT 06611

*Collector of
Beer Advertising Openers*



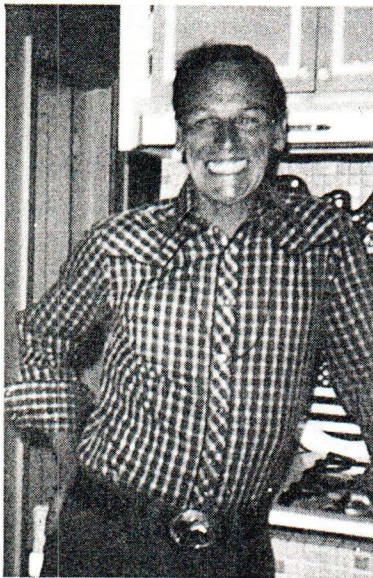
MEMBER
N.A.B.A. - E.C.B.A.

20944 EASTWOOD
WARREN, MI 48089

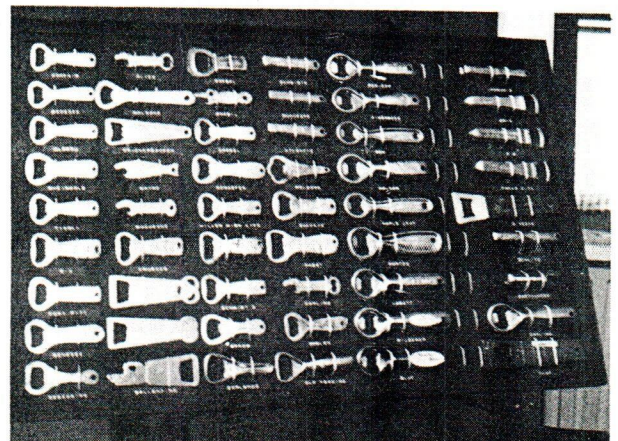
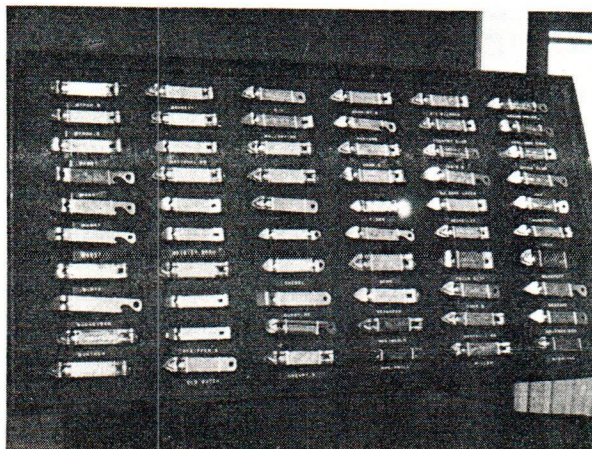


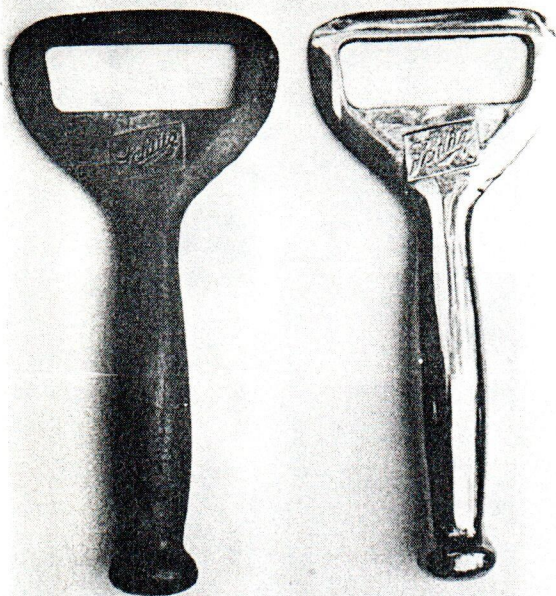
Phillip D. Fouch

June 7, 1921 - January 13, 1982



The photograph of the flower arrangement bottle opener was sent by Phil's sister Mae Bolus who described it as "Phil's last opener." A fitting remembrance of an opener collecting friend who will be missed by all. Phil was one of the bright spots at the last two opener conventions in St. Louis and was always a source of cheer in his correspondence with fellow collectors. Phil was one of the "old-time" early collectors who took great pride in his fine collection - two of his display boards are pictured below. He had a real thirst for knowledge about openers and was a frequent contributor of information to JFO. We are very sorry to lose him.





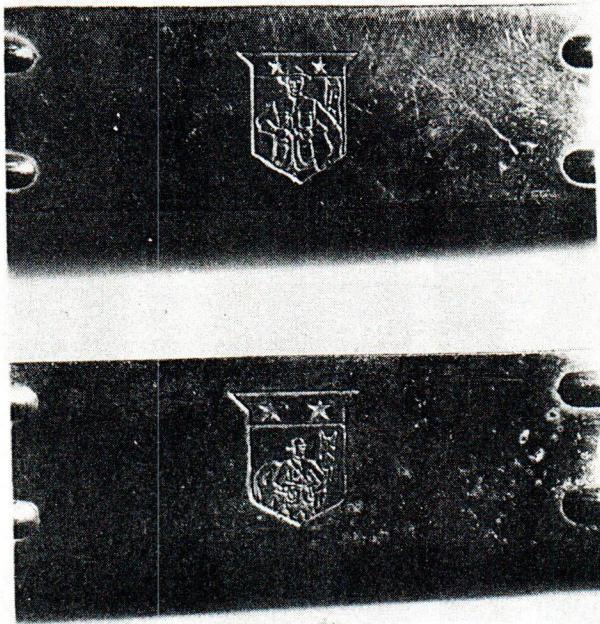
Don Reed has submitted two M-19 Schlitz openers for comparison. The opener on the left weighs 7 3/4 ounces and the polished one weighs in at 5 3/4 ounces. Also note differences in shape.



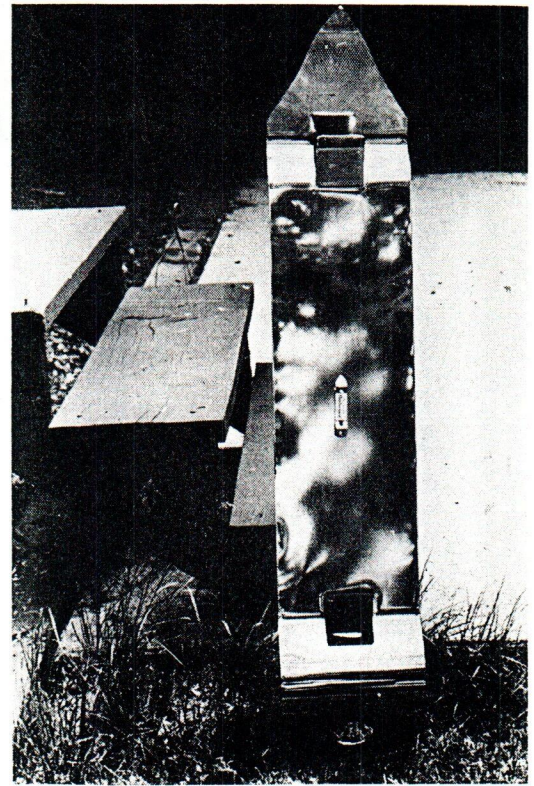
This should send all of you scurrying to inspect the corkscrews in your collections. The M-35 Storz is a right hander's corkscrew and the Sommer is for left handers. Note the difference in the way the screw turns and imagine them in use in your hand. Joe Balaban says left handed corkscrews are rare.

In JFO #12 some drawings from early Crown Cork & Seal Company were shown. Pictured below are openers manufactured by Crown Cork based on the 1894 Painter patent. The female figure is described by Crown as "Art Silver Plated Opener. This handsome opener from removing Crown Corks is designed especially for use in private homes. Made of best steel, heavy silver plated, it is in keeping with the finest table appointments."





Type I-17 #30 is listed as "Drewrys Mountie only." Here are two different Drewrys openers. The "large" Mountie appears on an I-17 made by Vaughan in 1955 - the same figure is on the reverse. The "small" Mountie was also made by Vaughan but no date is indicated on the opener - no Mountie on reverse.



Got a BIG can to open?

Additions to 1982 Directory of Opener Collectors

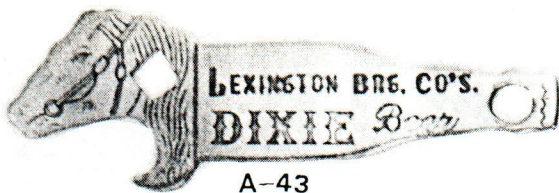
ALAMEDA, Dennis, 4758 Balboa Way, Fremont, CA 94536 (415) 797 8448
 ARNOLD, Hattie, 1950 N. Rural, Indianapolis, IN 46218
 ASHENDORF, Herb & Elaine, 21 Montclair Road, Yonkers, NY 10710 (914) 337 0616
 ATKINSON, Jim & Sherri, 123 Corinne Ave., Santa Cruz, CA 95065 (408) 475 6484
 BERENDOWSKY, Herbert, 10114 Memory Park Ave., Mission Hills, CA 91345
 BIDDLE, John, 1016 Daniel Drive, Petaluma, CA 94952 (707) 763 4625
 BOGGIANO, John, 401 N. First St., P.O. Box 348, Geneva, IL 60134 (312) 232 0100
 CHRAPLIWY, Pete S., 504 Ridgemont Drive, El Paso, TX 79912 (915) 584 1829
 FRANCIS, Jim, Route 3, Box 316E., Fort Worth, TX 76140
 GIBSON, Paul, 111 N. Catherine, Mt. Vernon, OH 43050
 GILLILAND, Richard, 3920 Weyburn, Fort Worth, TX 76109
 GREENE, Melvin K., 2623 S. Marion St., Denver, CO 80210 (303) 722 9113
 HICKOK, Frank F., 419 Franklin St., P.O. Box 32, Ogdensburg, NY 13669 (315) 393 1960
 HOWARD, Dennis, Box 45, Woodruff, WI 54568
 JACOBS, R.G., 1878 Armstrong St., Sudbury, Ontario, Canada P3E 2W7
 JAEHNERT, Larry, 1679 Atlantic St., St. Paul, MN 55106 (612) 776 9850
 KRUZEL, J., 529 Garfield N.W., Grand Rapids, MI 49504
 LUNDELL, Peter, 35 Barbara Lane, Oakland, NJ 07436 (201) 337 5767
 McNALLY, Harold, 349 N.W. 45th Court, Ft. Lauderdale, FL 33309 (305) 772 5355
 MILLER, Francis J., P.O. Box 173, Langlois, OR 97450
 NICOLETTI, Richard J., 249 Howard St., Berlin, NH 03570 (603) 752 5751
 O'NEAL, Alton, Jr., 604 W. Dale, Winters, TX 79567
 ORR, Winifred, 5803 Longs Peak Pl., Sacramento, CA 95842
 OSBORN, Jim, 424 5th Ave., Ottawa, IL 61350 (815) 433 3725
 PETERSON, R.C., 1915 Tangle Lake Drive, Kingwood, TX 77339 (713) 358 3370
 SHAW, Ralph, RR2, Box 44M, Clarinda, IA 51632 (712) 542 5080
 SNYDER, John N., 3882 Hereford Road, Erie, PA 16510 (814) 899 6275
 WARD, Joyce, Rt 5, Box 117A, Sherwood, OR 97140
 WORSFOLD, Richard D., 34 Cornwall Ave., St. John's, Nfld., Canada A1E 1Y6
 YOUNG, Joe, 36 South Weston Ave., Elgin, IL 60120 (312) 695 8635

DISCOVERIES (Types not previously shown in BEER ADVERTISING OPENERS - A PICTORIAL GUIDE, The Price Guide, or "Just for Openers.")

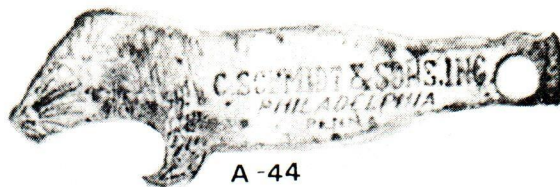
- A-43 Horse Head "Lexington Brg. Co's Dixie Beer / Old Heidelberg" (Kaye)..also.. "Brittania Beer" (Murphy). This type was noted in JFO No. 9 with the reproduction of the 1922 Vaughan catalog. It has not been reported with advertising previously. Note that it is the same shape as A-17 which depicts a lion's head. Has Prestolite key (square hole).
- A-44 Lion head. Like A-17 but no square hole. "C. Schmidt & Sons., Inc., Philadelphia, Penna." (Bull).
- B-46 Like B-6 but has square hole. "Compliments of Seattle Brewing & Malting Co. / Key to Rainier Beer." Marked Patented Jan. 27, 1903. (Grove).
- B-47 Cap lifter with square hole. Cross between B-19 & B-23. "Key to Hamm's Famous Beers, St. Paul." (Jay).
- B-48 Cap lifter with screw driver. Shown in 1922 Vaughan catalog. "Fink's Beer, Harrisburg, U.S.A." (Geyer).
- B-49 Cap lifter with cigar box nail puller. "Drink Old Heidelberg Brew / Blatz Milwaukee." (Jay & Warrick).
- B-50 Cap lifter. "Rainier Beer." Pat Ap'd For on reverse. (Green).
- C-36 Cap lifter. Similar to C-5. "Drink Fort Pitt Lager Brews, Fort Pitt Brewing Co., Sharpsburg, Pa." (Huffman).
- C-37 Cap lifter with Prestolite Key. "Schlitz, The beer that made Milwaukee Famous." (Jay).
- D-11 Cap lifter with raised lettering. "S B & M Co. / Gilt Top." (Haarberg).
- F-23 Comb. cap lifter, spoon, and corkscrew. "Golden Brew, Harrison Beverage Co., Inc." Marked Pat. apld for. (Reed)
- F-24 Cap lifter and ice pick (actual size is 10 3/4" long). "Hoffman Beverages, Health in every drop, Newark, N.J." (Ashendorf)
- I-27 Quad fold combo cap lifter and can piercer. No large plastic ring like type I-19. "Pabst Blue Ribbon." Made by Ekco, Chicago. (Jay).
- J-11 Can piercer similar to type J-1. "Schlitz, the beer that made Milwaukee famous / Jos. Schlitz Brewing Co., Milwaukee, Wis., U.S.A., Schlitz." (Grove). This type also noted marked "Vaughan's O-G Junior Can Tapper."
- K-9 Can opener. Cuts into top so can serves as drinking glass. "Blatz Milwaukee Beer." (Haydock)
- L-7 Mini bottle with combo cap lifter / corkscrew. "Ballantine's India Pale Ale, Newark, N.J." (Reed). Also "Ballantine's Export Beer." (Balaban)
- M-64 Combo cap lifter/can piercer. "Stag Beer, Sugar Free as Beer Can Be." Also marked "K-604" - possibly a sample opener. (Vollrath).
- M-65 Combo cap lifter / ice pick. "Peter Bub Brewery, Inc., Winona, Minn., Say Bub's Beer honored for over 90 years." (Bull).
- M-66 Combo cap lifter/can piercer with dinnerware type handle. "Schlitz" logo. Marked Stainless, Germany. (Bull)
- M-67 Cap lifter. Cast aluminum painted black. "Coors." (Hyland).
- M-68 Cap lifter from Crown Cork & Seal Co. (see page 9, JFO #12). "Pfaff" (Bull).
- M-69 Combo Cap lifter, can piercer, and knife sharpener. "It's Holiday Beer Time, Potosi Brewing Co., Potosi, Wis." Plastic Handle. (Bull).
- M-70 Cap lifter with plastic handle. Frequently seen with Canadian brands. Five different U.S. brands have been noted and may have been made up only as samples. The opener shown has the Anheuser Busch Eagle in A logo (gold on

brown) on one side and on the reverse: "4 line dealer imprint here." Also noted: Budweiser label in blue and red on white, Busch Bavarian label in blue on white, Pabst Blue Ribbon Beer logo in blue on white, and Schlitz globe in black on white. (Bull).

- M-71 Cap lifter from 1981 Clydesdale catalog. Catalog says: "Caps off to Anheuser-Busch. Any opening will be grand when you use the Clydesdale bottle opener that does double duty as a key chain! Be prepared for any emergency openings. \$5.95 + \$1.75 postage." (Bull & Reed).
- M-72 Cap lifter with single blade knife. "For Bonded Beer in Phila. Call for Esslinger Premium. Jimmie Walls, 121 Race St., MA y-5372." (Leon).
- M-73 Retractable cap lifter/corkscrew. Example shown is not beer - it is from H.L. Murphy, Agent for Texaco in Butte, Montana. Opener does exist with beer advertising: "Missoula Brewing Co., Highlander Beer." (Huffman).
- M-74 Cap lifter. Yellow lettering on maroon plastic handle. "Panda Beer / Greenways, Inc., Syracuse, N.Y., Phone 2-1177." (Reed).
- N-46 Cap lifter / Money clip. "Theo Hamm Brewing Co., St. Paul, Minn. / Hamm's Beer." (Murphy).
- N-47 Knife with cap lifter blade. "Big Chief Beer." Marked H. Boker & Co., Solingen. (Bull).
- N-48 Figural bottle knife with cap lifter blade. "Adam Scheidt Brewing Co., Valley Forge Special / same." Marked Lunawerk, Solingen, Germany. (Bull).
- P-45 Wall mount corkscrew (smaller than actual size). Patented by R.B. Gilchrist June 25, 1907 (#857,992). "Ballantine's Ales & Beers." (Fehr).
- P-46 Knife/cap lifter/corkscrew. "Miller High Life." Blade marked "The Ideal" (Bull).
- P-47 Knife/cap lifter/corkscrew. "Vancouver Breweries Ltd. / Pilsener Beer." Marked made in Germany. This one is Canadian but is included here as is suspected to exist with U.S. brand name. (Grove).
- P-48 Knife/corkscrew/cigar cutter. "Mathie's Beer / Costs No more, but tastes like more." (Murphy).
- P-49 Corkscrew. "Compliment of Chr. Heurich's Brewery." Marked D.R. Patent No. 20815. (Fouch).
- P-50 Corkscrew with wood handle marked Made in Germany. "Val Blatz Brew'g Co's Weiner Beer, Milwaukee." (Jay).
- P-51 Corkscrew with wire breaker and cap lifter (above bell). Williamson design patent #D29,798 of Dec. 13, 1898. Pictured: "Henry Weinhard Brewery, Portland, Oregon, Fine Table Beers." (Bull). Other examples are shown on page 15 of the "Beer Advertising Corkscrew" booklet.
- P-52 Wood Handle corkscrew marked Germany. Two examples discovered: 1. "Compliments of Indianapolis Brewing Co., Dusseldorfer Beer, Grand Prize St. Louis, Gold Medals - Paris & Belgium." 2. "Compliments of Indianapolis Brewing Co., Dusseldorfer Beer, Grand Prize- Cross of Honor, Gold Medale." (Balaban).
- P-53 Cap lifter/corkscrew with wood sleeve. "Jones Brewing Co., Smithton, Pa., Stoney's America's Best Beer." (Zruno & Braeuner). Also "Irwin Distributing Co., Distributors of Schlitz, Irwin, Pa. - Phone 56." (Zruno).
- P-54 Corkscrew with decapitator on wooden sleeve. "Compliments of Popel-Giller Co., Warsaw, Ill., Drink Warsaw Brewing Co's Fine Old Beers." Marked "This wire lifts crown caps" and "W.R.C. Decapitator Pat. Mar. 1, 1910, A.W. Stephens Mfg. Co., Waltham." (Jay). Others noted: 1. "Drink S.B. Whiskey, Adam Scheidt Best Beer, S.B. Wetherhold, 548 King Street, Pottstown, Pa." (Reed) 2. "Adam Geringer, The Popular Beer Man, 78th St. South Chicago, and Monroe Ave., Chicago, Ill., Fine Bottled Beers, Telephone Hyde Park 2007" (Bull).



A-43



A-44



B-46



B-47



B-48



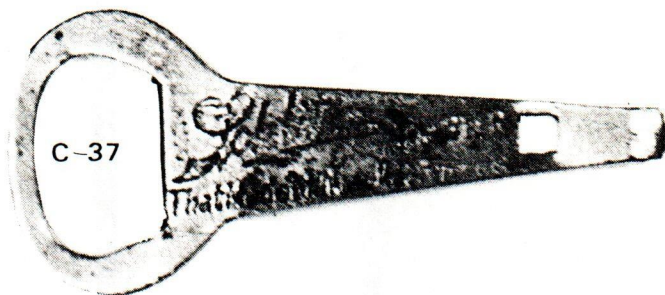
B-49



B-50



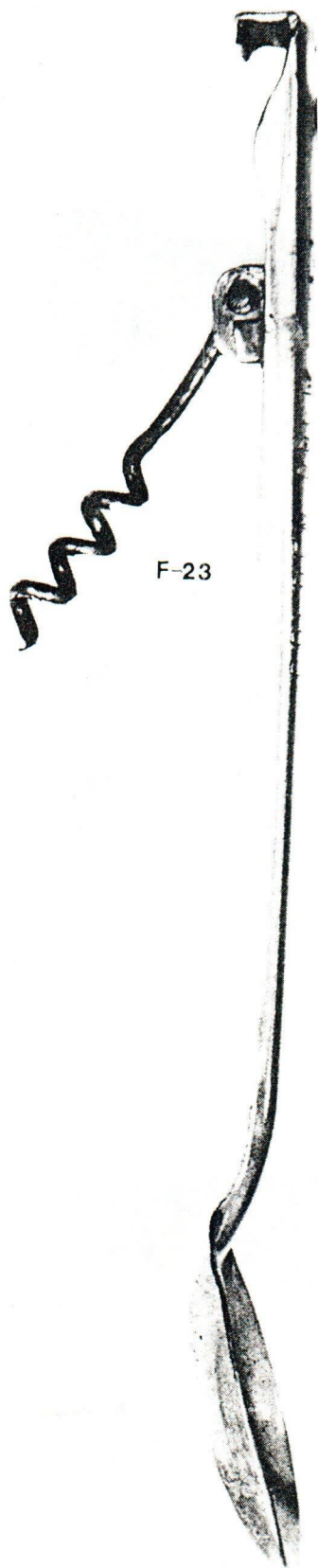
C-36



C-37



D-11



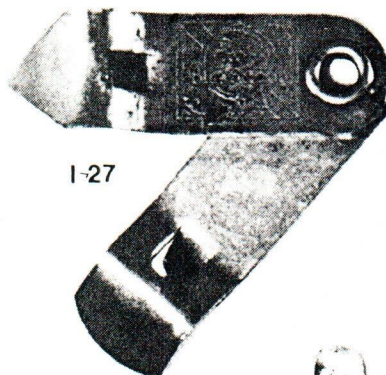
F-23



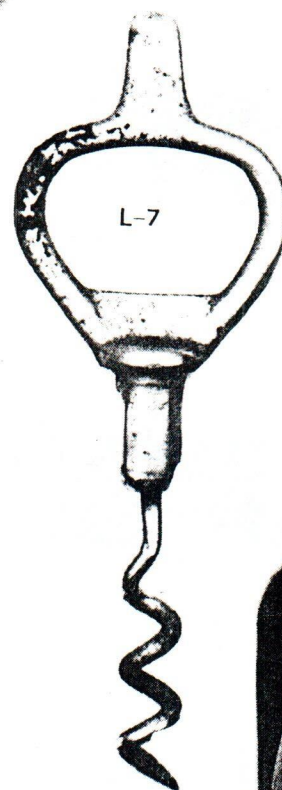
F-24



J-11



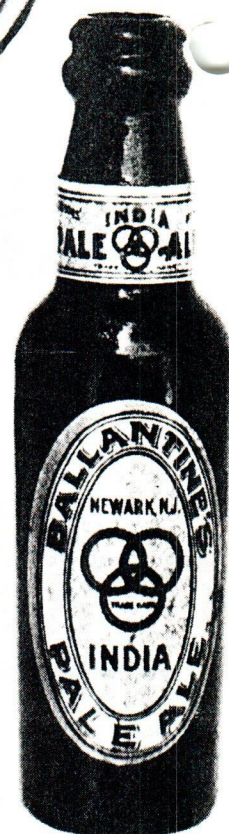
I-27

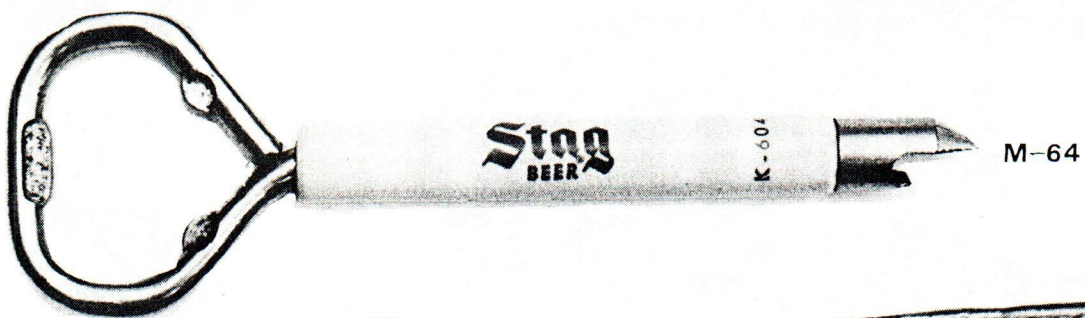


L-7

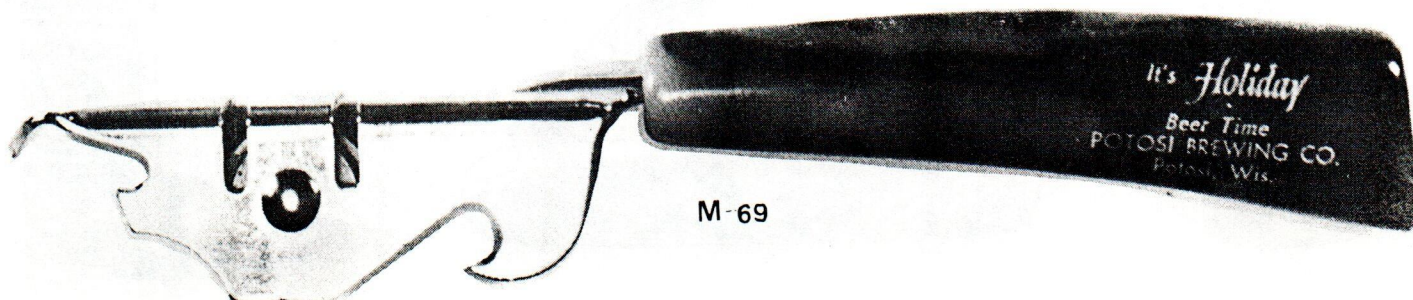
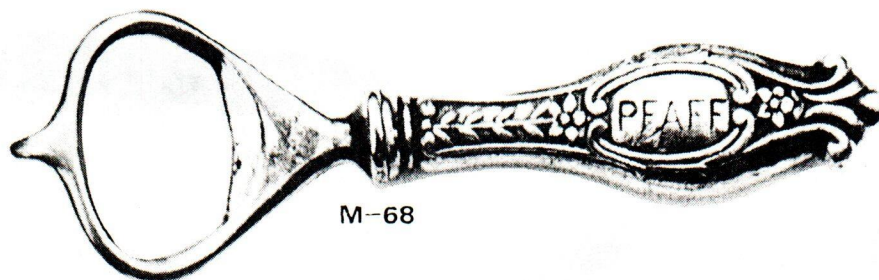
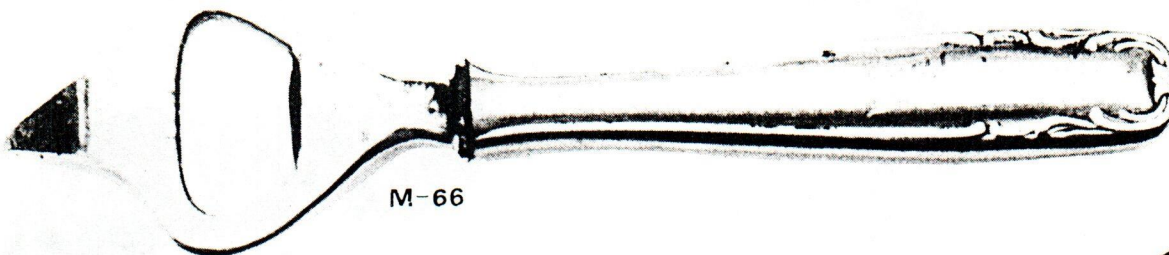


K-9





M-65

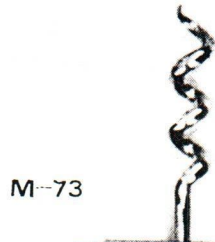




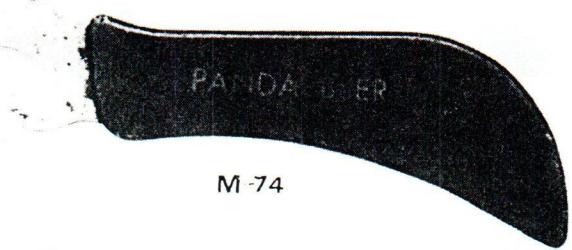
M-70



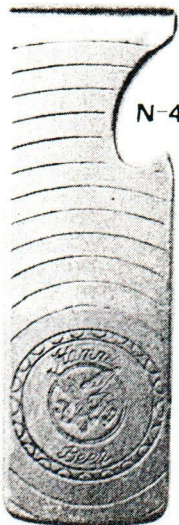
M-72



M-73



M-74



N-46



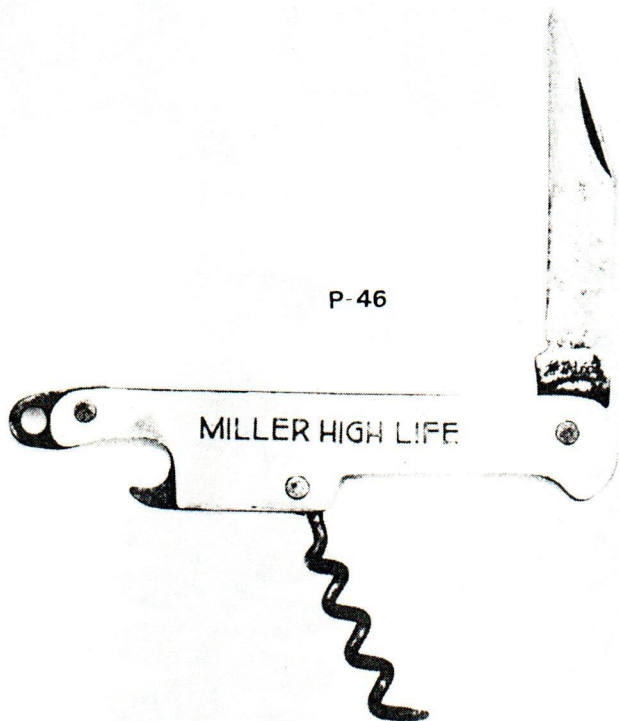
N-47



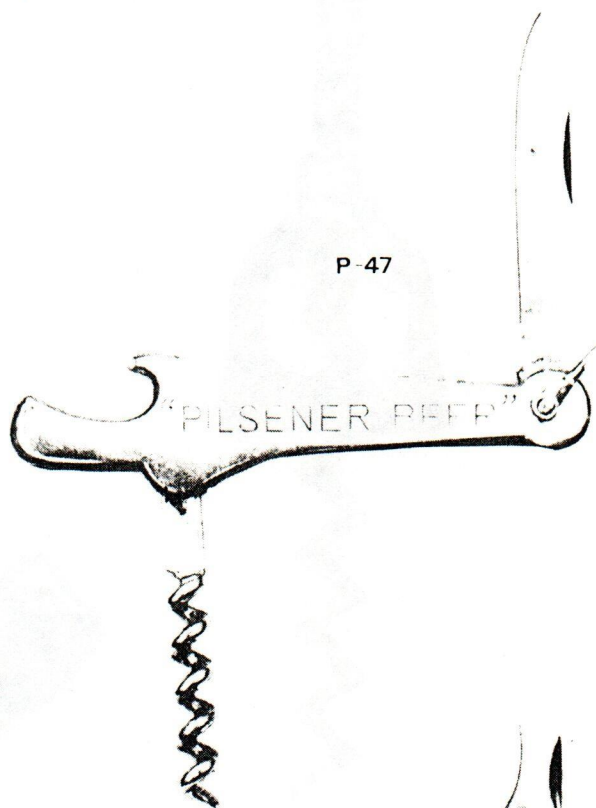
N-48



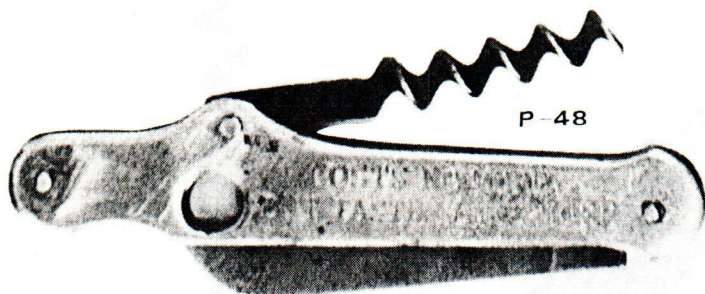
P-45



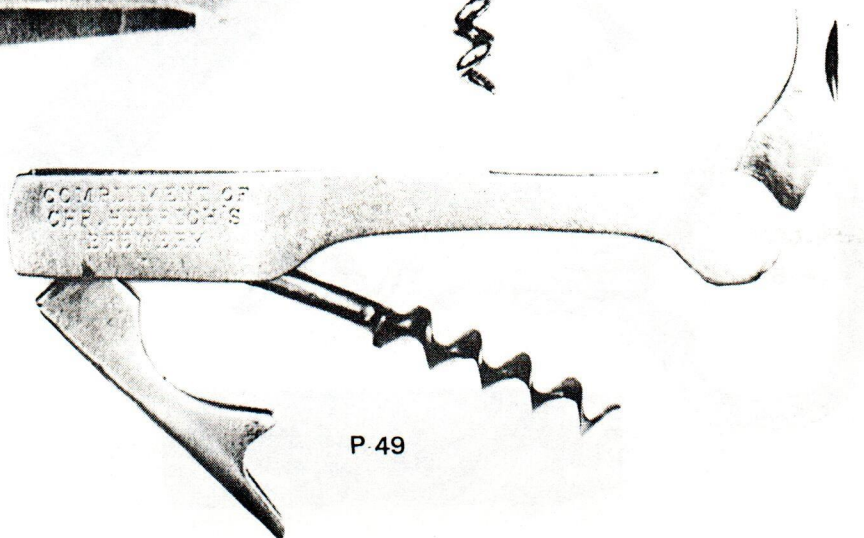
P-46



P-47

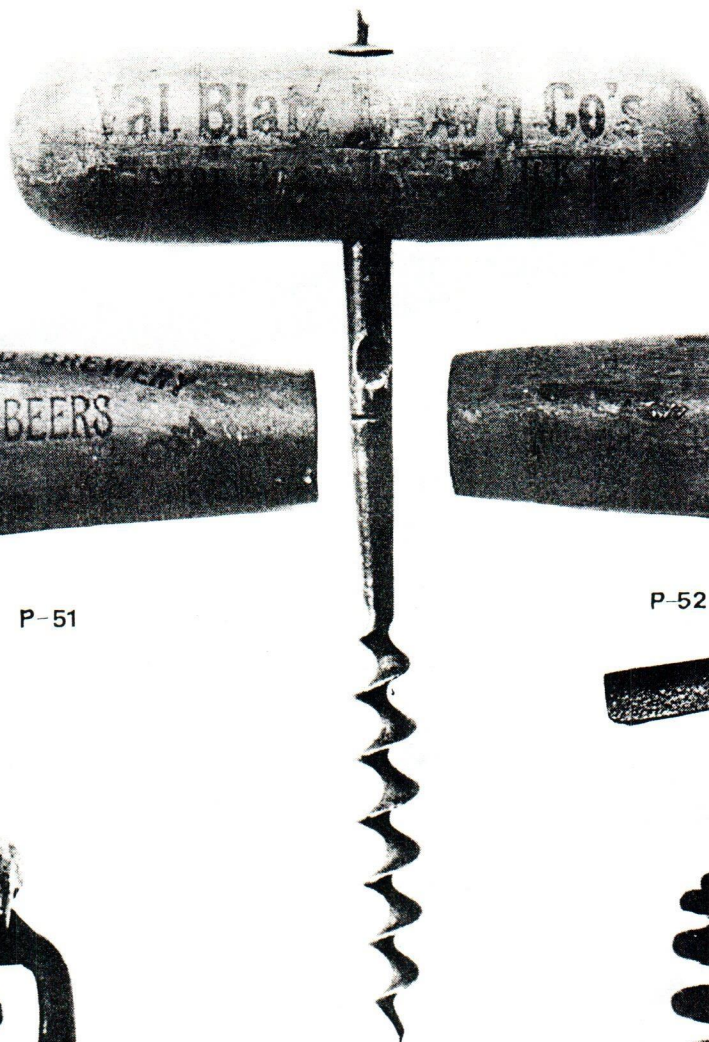


P-48

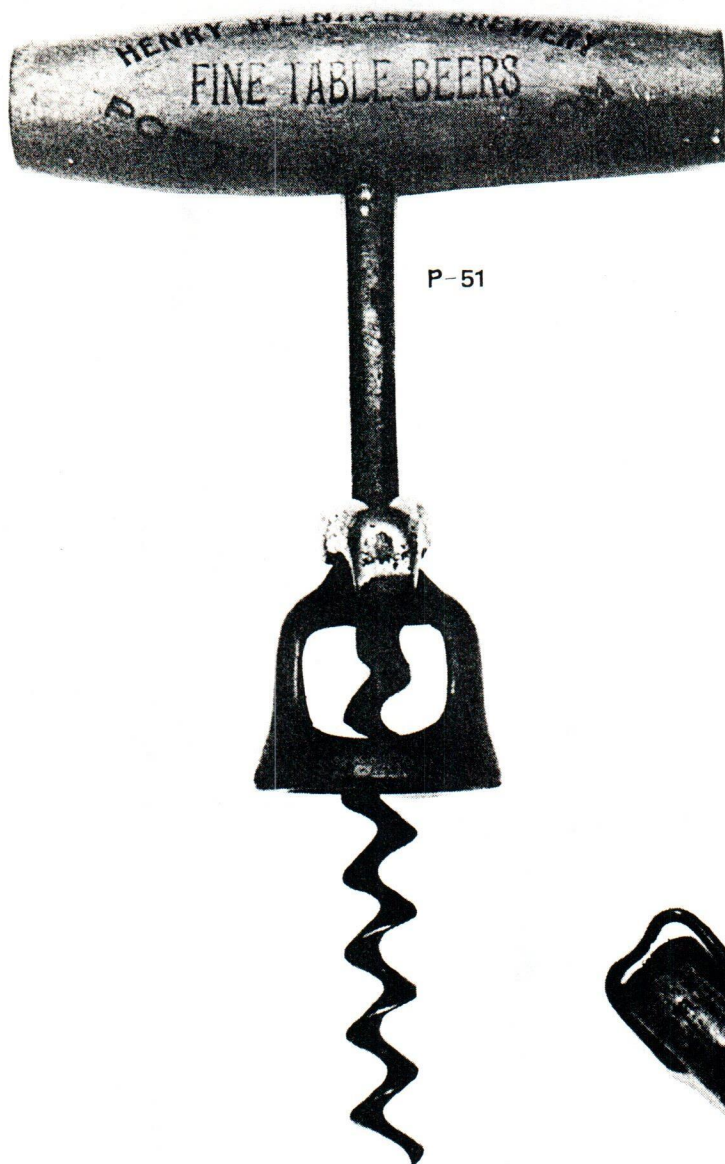


P-49

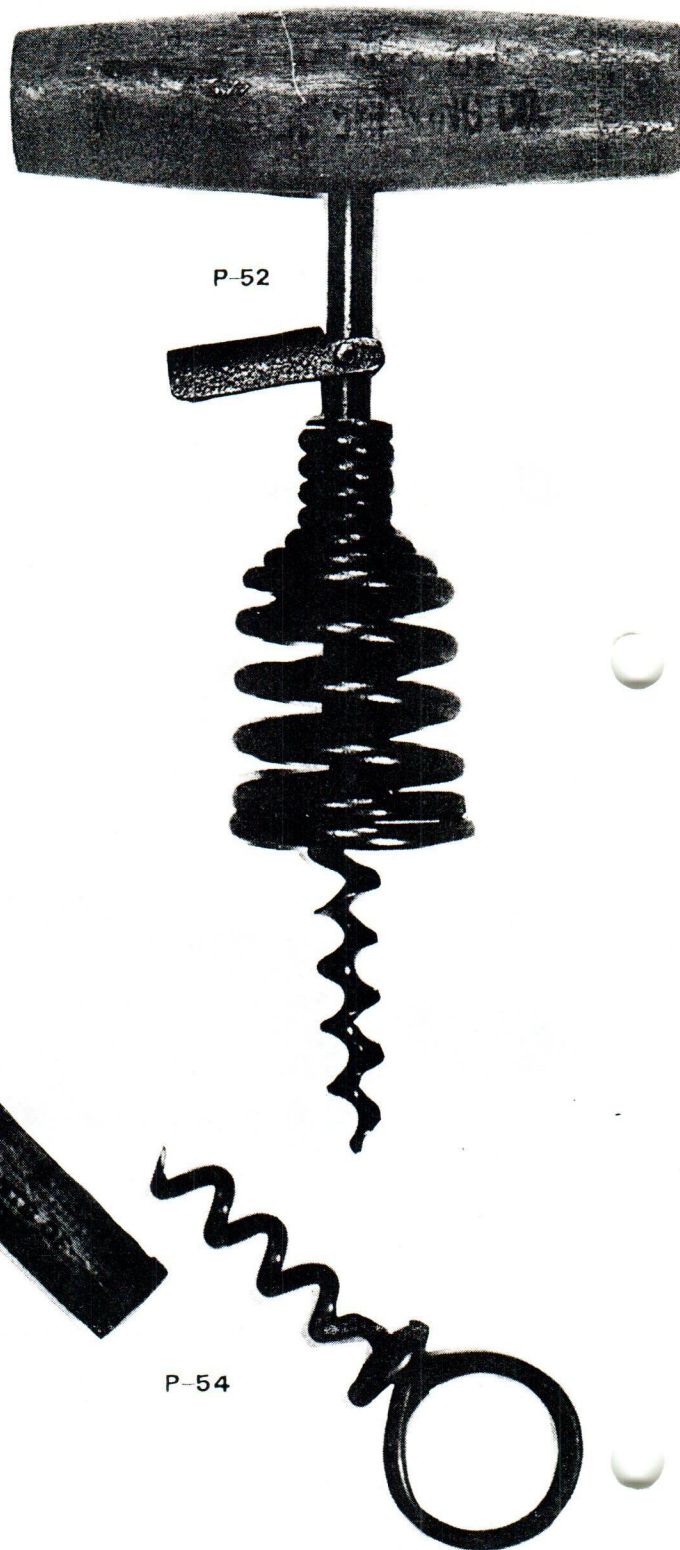
P-50



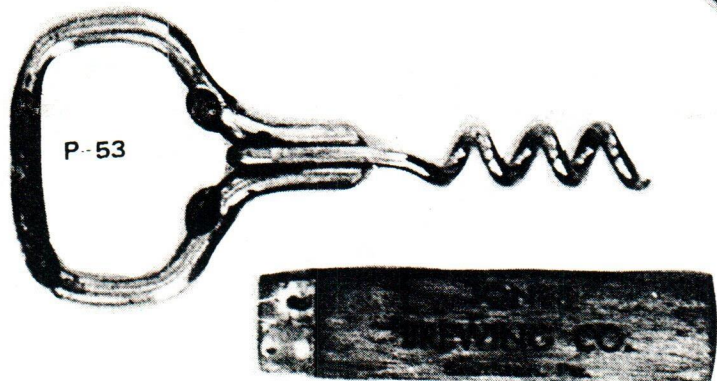
P-51



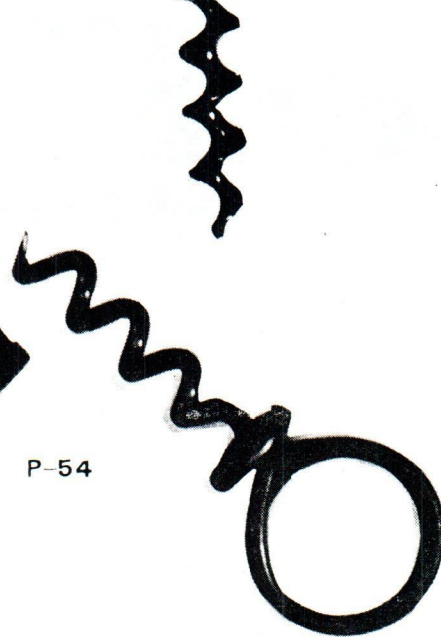
P-52



P-53



P-54

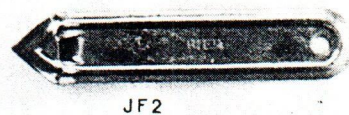
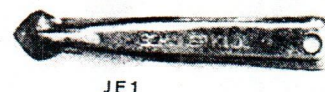
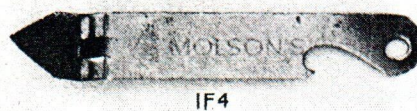
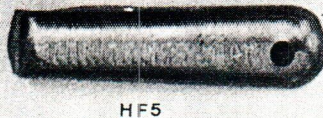
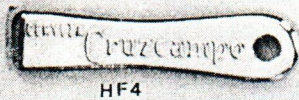
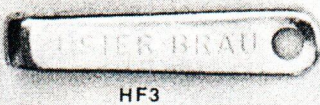
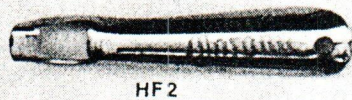
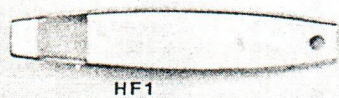
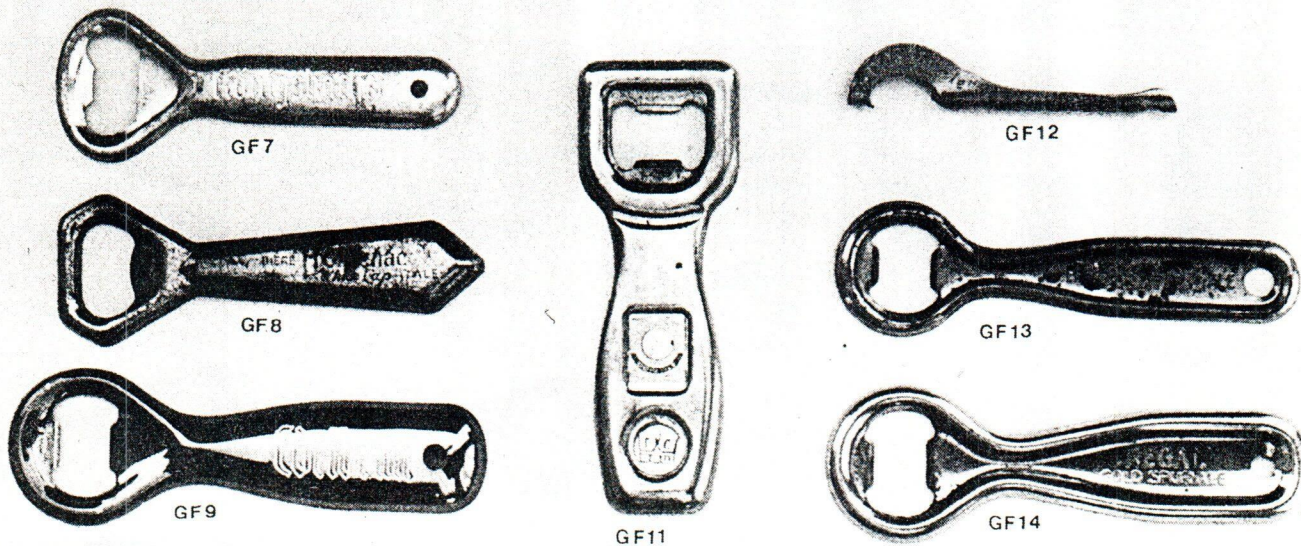
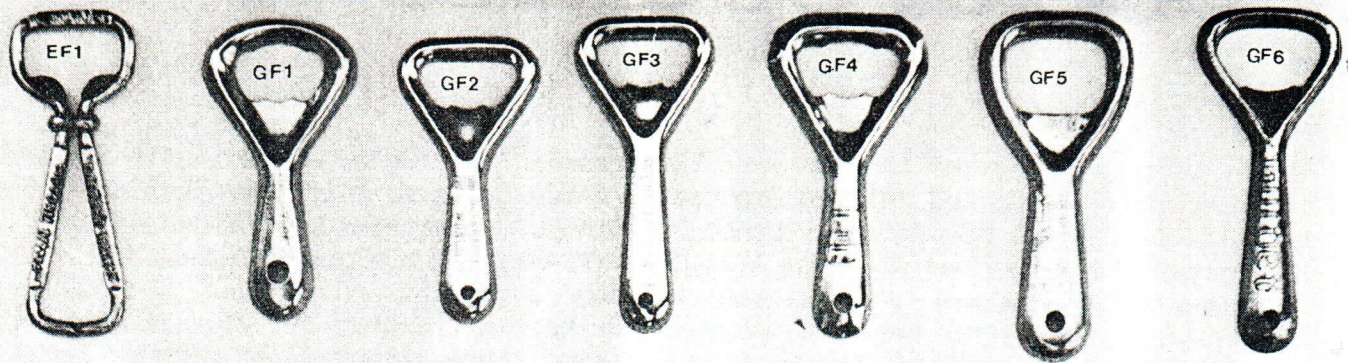


Just for openers

Supplement to JFO #14
April, 1982

JFO is primarily devoted to the classification and listing of openers with advertising for U.S. beer brands and related products. A few openers which have been given type classification have not to date turned up with U.S. beer brands on them although one would think that such exist (e.g. A-2, C-35, P-47). I have never intended to classify foreign (to U.S.) openers but interest in them is growing and I offer in these pages a beginning. I do not intend to carry it further in the near future. If there are any volunteers to classify and maintain lists of these openers, let me hear from you.....Don Bull







LF1



LF2



LF3



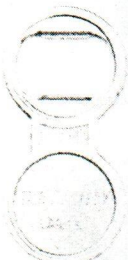
LF4



MF1



MF2



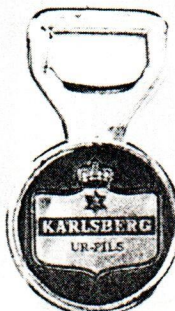
MF3



MF4



MF5



MF6



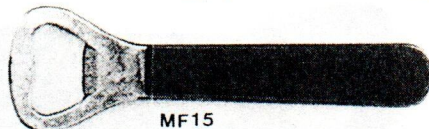
MF7



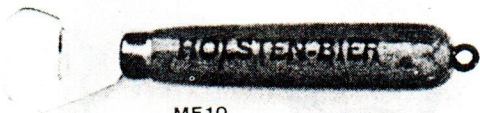
MF8



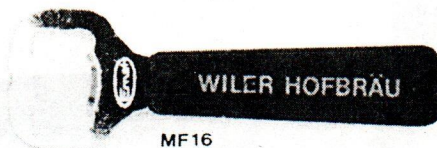
MF9



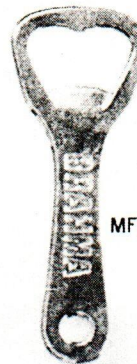
MF15



MF10



MF16



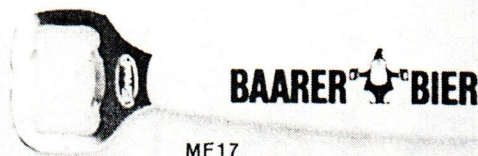
MF20



MF11



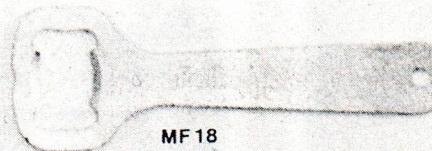
MF12



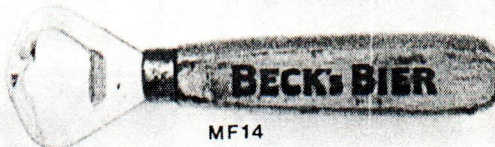
MF17



MF13



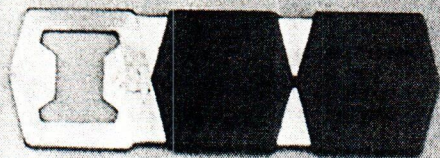
MF18



MF14



MF19



MF21



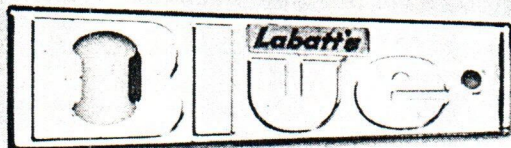
MF22



MF23



MF24



MF25



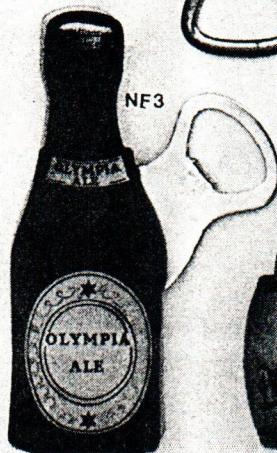
MF31



MF32



MF33



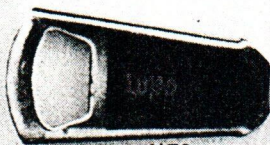
NF3



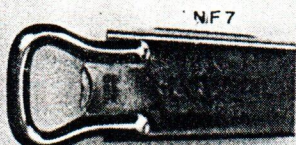
NF4



NF5



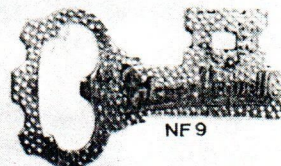
NF6



NF7



NF8



NF9



NF10



PF1



PF2



PF3



MF26



MF30



MF27



MF28



NF1



NF2

QUESTIONABLE OPENERS

At the Indianapolis convention Art Santen discussed his concern regarding the possibility that "non-existent" openers have been listed in the catalog of openers. The following are possible ways a "non-existent" opener could crop up in the list.

1. Improper assignment of type or confusion of types.
2. Listing information which appears on two sides of an opener as one side. For example: If a brewery name appears on the front (obverse) of an opener and the brand name on the back (reverse) and it was reported without distinction (a /), then it would be listed erroneously.
3. Abbreviating where an abbreviation does not appear on the opener. If "Illinois" appears complete on an opener, it should not be reported as Ill. or IL. If the word "Company" is spelled out, it should be reported as such.

Art has agreed to submit a quarterly report to JFO on "non-existent" or questionable openers. Here is how it will work:

1. A list of questionable openers will be sent with the newsletter. If you question the existence of an opener in the catalog of openers, submit the type and number to Art. If you think you know wherein the confusion lies, let Art know.
2. If you can verify that an opener on the questionable list does indeed exist, report such verification to Art. Art will report these for inclusion in the next newsletter as confirmation that they exist. If you like, check the box in front of the openers listed below if you have the opener or know of its existence. Send a copy of the list to Art.

...Here is the first list of questionable openers as submitted by Art Santen, Ollie Hibbeler, and Bob Chapman. The first column identifies the opener in question as shown in the catalog of openers. The second column shows what Art, Ollie, and Bob think the opener should be, what is missing, or just plain questionable.

<u>? OPENER</u>	<u>PROBLEM</u>	<u>? OPENER</u>	<u>PROBLEM ?</u>
<input type="checkbox"/> C-4 #4	Confused with C-28 #3?	<input type="checkbox"/> I-13 #79	?
<input type="checkbox"/> C-5 #4	Confused with C-28 #1?	<input type="checkbox"/> I-14 #30	?
<input type="checkbox"/> C-12 #48	Confused with C-13 #176?	<input type="checkbox"/> I-15 #42	?
<input type="checkbox"/> E-2 #5	?	<input type="checkbox"/> I-16 #34	?
<input type="checkbox"/> E-10 #41	Name once or twice on both sides?	<input type="checkbox"/> I-16 #35	?
<input type="checkbox"/> E-10 #123	Confused with E-10 #75?	<input type="checkbox"/> I-17 #150	?
<input type="checkbox"/> E-12 #16	Confused with E-14 #555?	<input type="checkbox"/> J-4 #6	Confused with J-3 #3?
<input type="checkbox"/> E-13 #1	?	<input type="checkbox"/> J-4 #7	Actually type J-3 Unlisted?
<input type="checkbox"/> E-10 #56	Confused with E-10 #115?	<input type="checkbox"/> J-4 #14	Confused with J-3 #24?
<input type="checkbox"/> E-14 #156	Confused with E-14 #514?	<input type="checkbox"/> J-4 #15	Confused with J-3 #3?
<input type="checkbox"/> E-14 #271	Confused with E-14 #555?	<input type="checkbox"/> J-5 #11	Confused with J-5 #55?
<input type="checkbox"/> E-14 #310	Confused with E-14 #46?	<input type="checkbox"/> J-5 #75	Confused with J-5 #77?
<input type="checkbox"/> E-14 #332	?	<input type="checkbox"/> J-5 #76	Confused with J-5 #78?
<input type="checkbox"/> E-14 #333	?	<input type="checkbox"/> M-23 #3	?
<input type="checkbox"/> E-14 #556	Confused with E-14 #557?	<input type="checkbox"/> M-29 #10	?
<input type="checkbox"/> H-6 #8	?	<input type="checkbox"/> M-29 #11	without word "America"?
<input type="checkbox"/> I-11 #20	?	<input type="checkbox"/> O-5 #19	Confused with O-5 #4?
<input type="checkbox"/> I-11 #66	Confused with I-11 #246?	<input type="checkbox"/> P-10 #11	?
<input type="checkbox"/> I-11 #173	Confused with I-11 #233?	<input type="checkbox"/> P-10 #7	Confused with P-10 #23?
<input type="checkbox"/> I-11 #229	Confused with I-11 #6?		
<input type="checkbox"/> I-11 #67	On one side only?		
<input type="checkbox"/> I-11 #235	Without Falstaff Choicest Product of the Brewers Art on reverse?		

If you have any of the openers listed in the "? OPENER" column or know of their existence in another collection, please drop Art a note regarding those you can verify or simply put a check mark in front of the openers above and send copy of this form to Art.

Mail to: Art Santen, 6126 McPherson St., St. Louis, MO 63112

YOUR NAME: _____ Date: _____

Include a list of openers you suspect to be non-existent or questionable.

