



JUST FOR OPENERS

3712 SUNNINGDALE WAY DURHAM, NC 27707-5684 (919) 419-1546
Past Editors Don Bull (1979-83) Ed Kaye (1984-1988) Art Santen (1989-1993)

As my first year as Editor of Just For Openers concludes I would like to give special thanks to the past three Editors, Don Bull (1979-83) the founder of JFO, Ed Kaye (1984-1988), and Art Santen (1989-1993) for their support and help in putting out the newsletter. Don has given me full support for any decisions I have made about the format of the newsletter or 1994 Handbook. Ed has carefully edited each newsletter, offering ideas and improvements. Ed was also the main proofreader of the 1994 Handbook. Don and Ed both teamed up in assigning membership numbers. Finally Art Santen carefully checked all 5,000 beer openers in his collection to verify listings in the 1994 Handbook. Just For Openers continues to grow due to the efforts of these three members.

Any Member is Welcomed to Our Home

Anytime a member is in the Durham, NC area, please feel free to stop by and see Pat and myself. We are usually at home and a visit by any member would be welcomed.

1995 Convention April 20th-22nd St. Joseph, MO

The 1995 convention is set for St. Joseph, MO to be hosted by Don and Cora Whelan. Don has reserved rooms at the Ramada Inn in St. Joe. Reservation cards and convention registration will be in the January issue. The room rate is a very reasonable \$50.00 per night for up to four adults in a room. The Kansas City International Airport is about 35 miles from the hotel. Twenty-four hour shuttle service is available for \$30.00 for one or two people and \$10.00 each additional person. Contact Heartland Express at 1-800-279-1734 from 8AM to 5PM Monday thru Friday. Travelers will need to provide Flight Number, Airline, Arrival Time, Etc. Also mention you are with JFO.

"OPENER/CORKSCREW ACQUISITIONS"

John Hall was the member who sent the in the response to Larry Moter's question about the E-8 Parramatta. His postcard turned up after I had moved into our new home and was sorting out my files. My apology again to John for misplacing his response.

I omitted some opener dealings from the Reading convention. A R-5-2 Champagne Velvet (Shark) was sold for \$100. Another A-41-1 Medford Dog in excellent condition sold for \$50.00.

RENEWAL CARDS ARE ENCLOSED IF YOUR MEMBERSHIP EXPIRES 12/31/94

Article Deadlines For Each Newsletter

Article deadlines for each newsletter will always be the 1st day of the month preceding the month the newsletter is issued unless I state otherwise. So deadlines for the four issues will be -

January Issue is December 1st

April Issue is March 1st

July Issue is June 1st

October Issue is September 1st

Member's Update

An additional \$10.00 was given to the Bill McKenzie fund bringing the total to \$890.00.

Unfortunately I must report that Otto Wahl passed away in June. Otto came to the Saturday show of this year's Reading convention. He had been preparing plans for hosting a JFO convention in upstate New York for 1996. As with many members of JFO he was an avid collector of openers and corkscrews (see October 1991 JFO issue "Opener Collector of the Month".) His collection has been passed on to his grandson.

Larry Biehl underwent his fifth operation for bladder cancer. We are happy to report that Larry is five for five on the success rate and is doing well. Please send Larry a card.

Larry Biehl, 448 Crandon, Calumet City, IL, 60409-2202 (708) 891-4269

NEW ADDITIONS ?

**Please note: 95 New Additions (ULs) are due to me by
December 1st, 1994 for the January newsletter.**

Can anyone help with the following possible new additions? Should they be listed?

- A-1** GRAFS DRINK ORANGE LIFE (DID GRAFS ACTUALLY PRODUCE BEER OR ALL GRAFS OPENERS REALLY SODA OPENERS ?)
- F-9** FREMONT BEVERAGE CO. / PHONE 24, FREMONT, NEB. / DRINK FREMO / THE PERFECT BEVERAGE (FREMONT BREWING COMPANY OFFSHOOT ?)
- G-8** PFIZER (AMERICAN ?)
- N-10** DRINK TIP-TOP SODAWATER (LEMP PROHIBITION DRINK ?)
- P-90** ENGLERT'S OLD 84 / SAME (WHISKEY ?)

BULK MAILING

Bulk mailing still brings some delivery problems, but hopefully with zip bar code labels this newsletter will be delivered faster. There is really no rhyme or reason to the delivery time of the newsletter. One issue a member will get their newsletter in 10 days and the next one will take 30 days. I do have "address correction requested" on each newsletter so I will at least know if someone has changed their address or did not receive their issue.

"Buyer Beware"

In the last issue the "Dixie Beer Hatchet" was mentioned as a fantasy opener. I thought it would be a good time to talk about some other possible "fakes".

There have been a number of N-5-UL Utica Club knives coming on the market in recent years. About five years ago I saw 4 for sale at a gun and knife show in Raleigh, NC. They were being sold for \$50.00 apiece and the seller was known to deal in reproduction items. Since that time I have seen several for sale ranging in price from \$50.00 to \$100.00. At the recent NABA (National Association of Breweriana Advertising) convention, a New York dealer had the original knife in rough condition priced \$85.00 and the N-5-UL priced \$125.00. All of the N-5-ULs I have seen have been in near mint to mint condition. It is possible someone found a large supply of these, but with a lot of different reproduction knives on the market I am very suspicious. It is doubtful a person can get one for less than \$50.00 so if you must have one, that is all that I would pay. I use this figure because the knife is well made and that is the least I have seen one priced. If someone has more knowledge about this knife N-5-UL please let me know. The wording is as follows:

N-5
UL COMPT'S WEST END BRG. CO. / UTICA CLUB ITS IN THE TASTE PILSENER WUERZBURGER -
GINGER ALE

Another area of concern is with openers that have decals applied to them. A few have been listed in the Handbook and trying to determine if they are legitimate is difficult. It is just too easy to get a blank opener and apply a decal. Also in this same category are openers contained in leather pouches. The opener must be stamped. Being in a leather pouch that is stamped with beer advertising does not mean it is a new discovery. Just remember to be careful when buying these types of openers.

1994 HANDBOOK "Cross-Reference"

Work continues on the Handbook Cross-Reference. Progress has been slow over the summer. hopefully I can have the 1st phase completed by the 1995 convention. The first phase is basically listing all known additions by company, brand, city and state. An example is shown below.

A-004-006	CROCKERY CITY BREWING CO		E. LIVERPOOL	OH
A-004-007	CLEVELAND & SANDUSKY BREWING CO	CRYSTAL ROCK BEER	SANDUSKY	OH
A-004-010	STAR BREWING CO		SAGINAW	MI
A-004-011	POPEL-GILLER CO	WARSAW BEER	WARSAW	IL
A-004-012	WIDMAN & CO	BOHEMIAN BEER	BETHLEHEM	PA
A-004-013	AKRON BREWING COMPANY	WHITE ROCK EXPORT	AKRON	OH

The format shows the Handbook reference number, the brewing company if known, a beer brand if the brand name appears on the opener, and the brewing company's city and state. Words that do not actually appear on the opener will be in italics. This means that an attempt will always be made to list the brewing company if known and from this the city and state where the brewing company is located. If the brewing company had several branches the main branch will be used. If the opener lists multiple branches or brands all will be listed.

Patent Numbers and Dates

The following is reference of Patent numbers and year issued:

1836	1	1876	171,641	1916	1,166,419	1956	2,728,913
1837	110	1877	185,813	1917	1,210,389	1957	2,775,762
1838	546	1878	198,733	1918	1,251,458	1958	2,818,567
1839	1,061	1879	211,078	1919	1,290,027	1959	2,866,973
1840	1,465	1880	223,211	1920	1,326,899	1960	2,919,443
1841	1,923	1881	236,137	1921	1,364,063	1961	2,966,681
1842	2,413	1882	251,685	1922	1,401,948	1962	3,015,103
1843	2,901	1883	269,820	1923	1,440,362	1963	3,070,801
1844	3,395	1884	291,016	1924	1,478,996	1964	3,116,487
1845	3,873	1885	310,163	1925	1,521,590	1965	3,163,865
1846	4,348	1886	333,494	1926	1,568,040	1966	3,226,729
1847	4,914	1887	355,291	1927	1,612,700	1967	3,295,143
1848	5,409	1888	375,720	1928	1,654,521	1968	3,360,800
1849	5,993	1889	395,305	1929	1,696,897	1969	3,419,907
1850	6,981	1890	418,665	1930	1,742,181	1970	3,487,470
1851	7,865	1891	443,987	1931	1,787,424	1971	3,551,909
1852	8,622	1892	466,315	1932	1,839,190	1972	3,631,539
1853	9,512	1893	488,976	1933	1,892,663	1973	3,707,729
1854	10,358	1894	511,744	1934	1,941,449	1974	3,781,914
1855	12,117	1895	531,619	1935	1,985,878	1975	3,858,241
1856	14,009	1896	552,502	1936	2,026,516	1976	3,930,271
1857	16,324	1897	574,369	1937	2,066,309	1977	4,000,520
1858	19,010	1898	596,467	1938	2,104,004	1978	4,065,812
1859	22,477	1899	616,871	1939	2,142,080	1979	4,131,952
1860	26,642	1900	640,167	1940	2,185,170	1980	4,180,867
1861	31,005	1901	664,827	1941	2,227,418	1981	4,242,757
1862	34,045	1902	690,385	1942	2,268,540		
1863	37,266	1903	717,521	1943	2,307,007		
1864	41,047	1904	748,567	1944	2,338,081		
1865	45,685	1905	778,834	1945	2,366,154		
1866	51,784	1906	808,618	1946	2,391,856		
1867	60,658	1907	839,799	1947	2,413,675		
1868	72,959	1908	875,679	1948	2,433,824		
1869	85,503	1909	908,436	1949	2,457,797		
1870	98,460	1910	945,010	1950	2,492,944		
1871	110,617	1911	980,178	1951	2,536,016		
1872	122,304	1912	1,013,095	1952	2,580,379		
1873	134,504	1913	1,049,326	1953	2,624,046		
1874	146,120	1914	1,083,267	1954	2,664,562		
1875	158,350	1915	1,123,212	1955	2,698,434		

1994 ABA Convention, Colorado Springs, CO

Many thanks to Ollie Hibbeler for the following article on the ABA convention. ABA (American Breweriana Association) has close to 3000 members and had close to 300 members in attendance at Colorado Springs. This was Ollie's first ABA convention.

Shirley and I drove to Colorado Springs from Lake Ozark, MO in one day. Sure was "tough" passing up all of those shops and malls on the way! We arrived Thursday night and went to bed immediately. Friday morning I attended some SHOW & TELL presentations and went scouting room to room. Shirley went to some garage sales and flea markets. Quiet a few members arrived as early as Tuesday. A schedule of events started as early as then.

The hospitality room opened at 1:00 PM every day. Throughout Friday I visited with Larry & Fran Biehl, Bill McKienzie, Stan & Chris Galloway, Dave Gausepohl, Herb & Helen Haydock, Norm Jay, Norma Mohr, Art Santen, and Don Sherman. Fourteen JFO people! Great fun!

They closed us out of the hospitality room at 6:00 PM on Friday. Shirley stayed to help decorate the room for a 7:00 wedding of one of our JFO members, Norma Mohr (#498) and her steady, Tom Fuerst (see wedding notice below). They met there collecting. We all wished them well with a beer toast.

After more room to room visiting we went to supper with the Biehl's. By the way, Larry was re-elected again to the board of directors of ABA.

The public show started at 8:00 AM on Saturday. The "RAINBOW GIRLS OF AMERICA" had a convention in the next ballroom. The ABA people were well behaved or better than the girls next door. I came away with about 60 openers, 5 beer advertising fishing lures, and a mirror I won in the raffle.

We had a ABA dinner in the hotel atrium Saturday night. Our table included the Biehl's, Haydock's, Dave Gausepohl, and a new prospective member for JFO, Bob Campbell from Minnesota. Lots of tall tales and a good meal.

After visiting a flea market Sunday morning, Shirley and I headed into southwest Colorado, eastern Utah, and southern Wyoming for the next 9 days. We stopped at every antique shop, junk shop and mall we could find until we arrived home. Lots and lots of "STUFF". An unlisted F-9 Fremont Brewery (Nebraska, see page two questionable new additions) was my "good find".

Next year's ABA convention will be in Wilkes-Barre, PA.

**Friends of Norma Mohr and Thomas Fuerst
are cordially invited to witness their uniting in
Holy Matrimony**

7PM June 17, 1994

**Columbine Suite 2001 Sheraton Colorado Springs Hotel
Dress Casual Informal Reception Follows**

1994 ECBA Convention, Philadelphia, PA

From July 13th to the 16th the annual ECBA (East Coast Breweriana Association) convention was held in Philadelphia, PA. The ECBA has over 500 members and had almost 140 in attendance. The majority of ECBA members are from the Northeast and the Midwest. All types of breweriana were on display and for sale. ECBA also has a Micro chapter of approximately 150 members. As I have learned with any breweriana group, ECBA members were a very warm and hospitable group.

Your editor attended his first ECBA convention. I arrived Wednesday afternoon with my wife Pat and our adorable dog, Cognac. There were several rooms open for room to room trading. My first purchase was a B-2-41 Mercer County in good condition. The hotel had six floors and members were spread out on five floors so a lot of walking was required. Several other JFO members were in attendance including Norm Jay, Ben Hoffman, Harold Queen, Fred Bolton, Herb Haydock and Larry Sherk. Hale Milano and Larry Moter attended the Saturday trade show.

I spent Wednesday evening, Thursday and Friday searching rooms for openers and corkscrews. By Saturday I had picked up 43 in all including a the B-2 Mercer County (Good,\$45), C-25-1 Kings (Very Good,\$20), A-29-27 Wagner (Mint,\$20), H-2-UL Jamestown Brewing Co. (NY,EX,\$15), M-7-1 Silver Top (EX,\$15), A-1-UL Broadway Malt Buffalo, NY (EX,\$10), B-18-UL Lock City Beer and Ale (NY,EX,\$15), B-15-13 Haberle (EX,\$15), B-14-45 Washington (Good,\$10), B-23-97 Penn Beverage (Good,\$12), C-13-UL Lyell Malt (Good,\$5) and an O-4-3 Gibbons (Mint in the Box,\$7). I also picked up quiet a few miscellaneous openers (\$3 to \$10). Probably the best opener picked up at ECBA was by Norm Jay. It was a C-13-UL "Galeton Sportmen's Beer" in mint condition. Norm is trying to get one of each C-13 listed and this was a really nice addition to his C-13 collection. Sportmen's Beer was produced by the Galeton Brewing Company of Galeton, PA from 1933-1937. JFO member John Hall has done a very nice history of the breweries from Galeton, PA which will be covered in the January, 1995 JFO newsletter.

Brewery tours were set up for downtown Philadelphia on Thursday, but I stayed at the hotel. Pat went shopping all day Thursday with Judy Jay (this is definitely Norm's better half) and by herself all day Friday. Friday had a beer tasting room set up at the hotel. Saturday morning was the ECBA breakfast convention meeting. The 1995 convention will be in Kingston, NY and the 1996 convention will be in Boston, MA. An election of officers for ECBA was held and I was elected Membership Secretary by default (no one else volunteered). The position requires me to keep up the membership roster, print labels for the quarterly newsletter and produce the annual membership directory. Hopefully with Pat's (I had "my" and the boss said change it to "Pat's") computer skills the job will go smoothly.

After the Saturday breakfast meeting a show open to the public is held. A large crowd of walk-ins came and by 12:00 Pat and myself were ready to head south. By 7:30 we were back in Durham. One of my goals was to spread the word about JFO and hopefully this happened.

1994 NABA Convention, Greensburg, PA

From August 3rd to the 6th the annual NABA (National Association of Breweriana Advertising) convention was held in Greensburg, PA. This completed my trifecta of Pennsylvania conventions for 1994. NABA has about 1000 members and about 150 attended this convention. One of the three founding members is JFO member Herb Haydock and the current president is Fil Graf, another JFO member. Everyone at the convention and in this area of Pennsylvania in general were nice and friendly. As with the ECBA convention this was my first NABA convention.

I arrived Wednesday afternoon and spent Wednesday evening, Thursday, and Friday doing room to room buying and trading. NABA had a brewery picnic at the Latrobe Brewing Company planned for Thursday lunch which went very well. Friday was the big auction and Friday night the formal convention dinner. Saturday had a show open to the public and Saturday evening another group meal followed on Sunday by another show open to the public. Your editor could not talk his wife Pat into coming so his mother attended this show with him. The Greensburg Sheraton was an excellent facility for a convention. Being two stories allowed seeing most of the member rooms without having to do a lot of walking. The only problem was about 10 members had to use the adjacent Super-8 Motel because the Sheraton was sold out. The 1995 NABA convention will be in Chattanooga, TN and the 1996 convention in Milwaukee, WI.

Attending JFO members were Norm Jay, Herb Haydock, Fil Graff, Harold Queen, Larry Moter, Tye Schwalbe, Henry Smith, Tom Atkinson, Hale Milano, and Ben Hoffman. I do apologize if some JFO member names have been omitted from the ECBA or NABA list of attendees. My mother and I left the show at noon Saturday and returned back to North Carolina. The return trip took about 8 hours.

I ended up coming home with 52 new openers and corkscrews. The highlights were an A-11-1 Wooden Shoe (Mint,\$50), A-27-1 Peter Doelger (VG,\$20), two A-39-ULs Pabst Blue Ribbon (Mint,\$25 each), A-1-UL Burkhardt's Beer (VG,\$25), A-7-25 Southern (Good,Trade), A-17-37 Uhls (VG,Trade), B-1-22 Portsmouth (Good,\$20), B-2-16 Phoenix (Mint,\$25), B-18-UL Leicht's (Good,\$15), B-21-200 Providence (VG,\$10), B-21-440 Brownsville (VG,\$20), B-21-494 Paducah (Good,Trade), B-22-15 Mutual (Mint,\$12), C-8-1 Congress (Mint,\$15), C-12-131 S-B Beer (VG,Trade), E-6-86 Renner (VG,\$5), E-7-UL Renner (VG,\$5), G-4-1 Bay City (VG,\$5), G-5-UL Bay City (VG,\$5), H-2-UL Chief Oshkosh Beer (Good,\$10), N-UL-UL Chief Oshkosh (Good,\$15), P-5-1 A-B (VG,\$35), P-51-UL Cumberland (VG,\$15), A-20-Coca-Cola Stamped "Branch Ind." (EX,Trade), and several more miscellaneous openers and corkscrews. As you can see I did really well, certainly the best variety of openers I have ever picked up at a non-opener convention. For the two shows (ECBA and NABA) I spent close to \$1000.00 (Pat faints again) and did some trading with Norm Jay, Harold Queen, Ben Hoffman, and Larry Moter.

Further notes about NABA include that a R-8-1 Kaier's Wall Mount with original paint was bought at a very good price. And finally many of the openers I bought at ECBA and NABA will be available in the current JFO auction.

Lessons on Buying a Collection

One event that occurred at NABA that I decided needed a separate story was my supposedly buying a collection out of a former JFO member. The former member's name will not be used and I do want to stress that I was probably not in my right mind when I decided to buy his collection. I walked into his room Thursday afternoon and was glad to see two cases of openers for sell. There were about 50 openers and after about 10 minutes of looking I decided to get 8 openers. They were priced \$150. I asked what was the best price, the son answered \$140 and the father answered \$125. I paid the \$125 (this lot included the A-27-1 Doelger, A-1-UL Burkhardt, A-4-44 Augustiner, B-1-22 Portsmouth, B-14-151 Haberle, B-18-UL Leicht, B-21-246 German and B-21-440 Brownsville).

The father mentioned he used to belong to JFO and I told him I was the current editor. He then mentioned that he had about 700 more openers back home and that he would like to sell everything he had left including the openers at this show for \$1500. I had been picking up a lot of good openers at this show so I figured I was on a roll. This is where my mind went crazy or we say down south, "my mind jumped time". I asked him what was in the 700 at home. He said he had about 100 'A's and 'B's, a lot of 'C's with bottles on them, and probably a couple of hundred can piercers. At this point I knew I had bought the best eight openers of the 50 he had at the show. There were three corkscrews with him at the show and Harold Queen bought one (a P-9-UL Goenner & Co., Johnstown, PA.). I made a quick trip back to my room and called Ed Kaye. Ed was editor of JFO when this person was a member. Ed said the ex-member had some good openers but for the most part was overpriced. I reasoned that since this was 10 years ago maybe his prices would not be way out of line now. After some discussion I agreed to pay \$1400 for the openers remaining at the show and the 700 at home. We knocked off the \$125 from the \$1500 and added \$25 for his shipping cost.

Looking back I could see that I was hoping there were more good openers than bad ones. I knew I had seen an old ad in JFO where this guy was trying to sell his collection. I thought the ad was 800 openers for \$1500. He did tell me that he had traded 90 'B' types for some beer cans a couple of years ago. He finally said that if I was not satisfied he would refund my money. At this point I had broken one of my main rules, **do not buy anything sight unseen**. The ex-member would be arriving back home the following week and would UPS the openers within three days.

My whole intent in buying this collection was trying to get some good material for the JFO auction. I have only myself to blame, the warnings signals were there but I wanted to read more into this than what actually was there. The first warning was when I was leaving his room on Thursday. I had given him a check for \$1400 and gotten the 43 openers that he had remaining at the show. He said you already have about \$400 worth of openers. I saw him again on Friday and during our talk he said you already have about \$600 in openers. Finally at the Saturday show right before I left he mentioned you already have \$700 in openers. I really started to have an uneasy feeling. The 43 had some decent beer ones (B-2-Scheidt with full paint, a couple of A-6-1s, some other beer 'B's) but mostly non-beer that were way overpriced. This was warning number two, **watch out when someone does not have consistent prices on openers** (or anything for that matter). An A-27-1 for \$20 is a great buy but a B-24-Narragansett for \$18 will lay there forever.

Lessons on Buying a Collection (Continued)

The openers were mailed the Thursday after NABA and I received them the following Monday. I arrived home Monday from work and saw a big box on the front porch. I knew it was the anticipated openers. About three years ago (April, 1991) I had received two shipments from Ray Braeuner. One had 130 different 'A' beer openers and the other had 420 different 'B' beer openers. Now that was two times that Christmas came early for me. As with the two other times I eagerly opened the box. There were basically two bags full of junk. One bag had 475 'T's. There were maybe 50 different beer brands with a lot of duplicates. The other bag had the bottle 'C's. About 30 all together, 10 Schlitz, 10 Pabst, and 10 Miller, the most common ones you can find. There was a nice O-4 Nu-Grape wall mount, an E-7-Krueger, and about 5 different L-4 bottles. The hand full of 'A's and 'B's in the box were real common, either non-beer or no advertising. I was getting pretty sick when Pat arrived home from work. I told her the bad news and all she said was, "you had better get your money back".

She left to go to the chiropractor (her back had instantly locked up) and I had to call the ex-member. He was not happy when I told him I was not satisfied. His opinion was that there were a lot of two and three dollar openers in the pile. My opinion was there were a lot of 5 and 10 cent openers in the pile. He asked what I would be willing to give. I told him that I wouldn't give more than \$500 for the whole lot. He responded with "would you give \$1000". I said \$500 is the most I would give. He responded with "would you give \$750" and I still said \$500. He finally said he would keep them rather than sell them at that price. At first he wanted me to return the 700 plus the 43 plus the 8 I had bought. I told him the 8 were a separate deal from the others. He then said to return the 700 plus the 43 and he would send my money back. He also said that maybe I should sleep on it and consider the \$750 offer.

That was the end of the phone conversation. About this time Pat called on her car phone to see if she wanted to come home. After I hung up and looked some more and realized that I wouldn't even want to pay \$500 for the lot. Most would not be worthy of giving away. It was about 6:15 and I called the Raleigh UPS office. They would be open until 7:30. I quickly repackaged the openers (had to do it twice because one opener had fallen to the floor). I arrived at the UPS office by 7:00 and told the lady at the UPS office they were antique bottle openers. The lady asked me if the items in the box could be replaced. At first I said no. She said they were not suppose to ship irreplaceable items. I then told her most of these items could be replaced. She agreed to ship them and the cost was \$16.50 for 40 pounds of junk insured for \$1400. The next Friday I called the ex-member. He said he had the openers back and my check was in the mail. By the next Monday I had my money back.

You would think a person like myself with close to 20 years experience buying and selling openers would have avoided the above situation. My ignorance prevailed but fortunately for me I got my money back. I do not fault the ex-member. He did a good selling job. I looked hard for the sell ad he had in an old JFO issue. I finally found it a couple of weeks after all of this happened. At the time he was selling 1200 openers and corkscrews for \$1500. I was really off base and realized then why he had dropped the price so much and so fast. Everyone needs a little humility and I got a good dose of it with this deal.

More Than a Thousand Corkscrews But Not a Single Bottle of Wine

The following article appeared in a recent Wall Street Journal and was sent in by Conrad Schmidt

By Janet Guyon Staff Reporter of the Wall Street Journal

London - Man cannot live by bread alone. So he invented wine. With wine came corkscrews. And with corkscrews came corkscrew collectors.

Which helps explain why the bidding was so heated on Friday at Christie's South Kensington. About 150 collectors gathered at the auction house to bid on what Christie's said was one of the world's largest private collections of corkscrews.

Assembled over 30 years by the late Gianni Giachin, the collection numbered more than 1,000. It included the Thomason continuous action brass-barrel corkscrew, first patented in 1802, as well as the first English corkscrew to be patented, in 1795. Rarer still was the steel two-pillar corkscrew patented by Henry Needham Scrope Shrapnel, son of the British general who invented the artillery shell.

Many of Mr. Giachin's friends were there as well as members of the International Correspondence of Corkscrew Addicts and the Canadian and Italian Corkscrew Collectors' clubs.

"We are screwy, yes," says Donald Bull, the president of a Connecticut tube-cleaning company and a corkscrew addict. "We collect them because they are there."

As the bidding began, it became clear there was big money in the room. Bert Giulian, a radiologist from Camp Hill, Pa., wanted several of Mr. Giachin's 18th-century pieces to add to the 1,500 corkscrews hanging in his wine cellar. He ended up spending more than £7,000 (\$10,500). "I'm sort of bizarre because I focus on 18th century, and that's a sub category, not a major category," Mr. Giulian says.

Big money, though, was also coming in over the phones. A gasp went up as a winning bid of £750 came over the phone for a French J.H. Perille single lever "Le Presto" type corkscrew that Christie's valued at about £250. "The right price for that is around 200 quid," says Fletcher Wallis, an English buyer and seller of corkscrews. "I think it must be Gianni on the telephone."

But the highest price was paid by a well-dressed Italian, who paid £3,600 for the Shrapnel piece. The buyer refused to give his name. "Everyone's kind of secretive," says Mr. Wallis. "They don't want their wives to know how much they're spending."

If Mr. Giachin had had a wife, she might now be smiling. In all, his collection brought in more than £185,000.

(Don Bull reported that he did pick up several nice corkscrews from the auction.)

October New Members, Renewals, Address Changes & Corrections

Just For Openers now has 246 members (New Members: Numbers 677 to 688)

Member Name, (Spouse) Membership Number	Street Areas of Interest	City, State, Zip Areas of Interest	Phone (Sponsor of New Member)
Alcorn, Dewaine, (Jane) 679 Beer Openers	4416 Waterbury Ln	Lincoln, NE 68516-1520	(402) 489-7564
Bamford, Ron, (Jerry) 232 Corkscrews	7114 N Woodson	Fresno, CA 93711	(209) 439-5762 (Rejoin)
Byrne, Tom, (DiAnn) 144 All "B" Type Brewery Openers	889 E Maple Dr	Southampton, PA 18966-4207	(215) 953-9279 (Rejoin)
Caraker, Mike, (Barb) 682 Figural Bottle Openers & Any Advertising Openers or Misc from Elgin, IL (Dale Deckert)	PO Box 1233	Elgin, IL 60121	(708) 742-6165
Crossen, Gary 683 (Larry Biehl)	PO Box 159	Streamwood, IL 60107-0159	(708) 519-1192
Feisel, Lyle, (Dorothy) 412 Beer Openers	977 Powderhouse Rd.	Binghamton, NY 13903-9307	(607) 723-4273
Johnson, Arthur, (Eileen) 213 "M-3" & "M-73" "Slide-Out" Openers	200 Elmwood Lane	Naples, FL 33962	(813) 775-6123
Johnson Jr, Art, (Nancy) 569 All Philadelphia Openers & Corkscrews (Beer, Soda or Whatever)	347 E. Orange St.	Lancaster, PA 17602	(717) 394-4117
Lewis, Sam 435	113 Rockwood Dr	Pittsburgh, PA 15238-2333	(412) 963-0827
Lothridge, Thomas 62 (Rejoin)	31 Pearl St	Bainbridge, NY 13733-1027	(607) 967-8575
Maxwell, H. James 677 Kansas City, MO Breweriana	1050 West Blue Ridge Blvd.	Kansas City, MO 64145-1216	(816) 942-6300 (Norm Jay)
McDermid, Don 686 (Don Bull)	700 Pennsylvania Apt 1	Deer Lodge, MT 59722	(406) 846-3427

Meyers, Don, (Betty) 214 Jackson St Clinton, MI 49236 (517) 456-7112
609 Unusual Bottle Openers (Figural) (Rejoin)

Nash, Abby 2110 Slaterville Rd Ithaca, NY 14850 (607) 539-7611
685 Corkscrews, Alcohol Ephemera, and Bakelite Anything

Page, Benny, (Barbara) 140 Calvin Dr Jackson, TN 38301-9081 (901) 423-0622
681

Redl, Alex, (Peggy) 1009 Elk St Beatrice, NE 68310-3026 (402) 223-2554
470 Openers & Corkscrews (Rejoin)

Ross, Rolla 31 Rio De Palmas Fort Pierce, FL 34951-2813 (407) 466-0475
224 Openers and Coasters (Rejoin)

Schlegel, Morry, (Diane) RR 2 La Moille, IL 61330-9802 (815) 638-2711
182 (Rejoin)

Schuldheisz, Lawrence, (Mertie) 851 Doss Ave Orlando, FL 32809-5880 (407) 855-7731
688 Advertising, Figurals and Odd Openers

Schwab, Ed 101 Cabin Ct Mechanicsville, VA 23111 (804) 746-1924
338 Beer Advertising Openers, Bottle Caps (Beer and Soda) (Today's Collector)

Schwalbe, Tye, (Sandy) 401 South Main St Naperville, IL 60540 (708) 357-0230
522 La Crosse and SW Wisconsin Openers, Corkscrews & Breweriana (Rejoin)

Schwimmer, Mike, (Ann) 325 East Blodgett Ave Lake Bluff, IL 60044-2112
680 Cigar Box Openers, Cigar Cutters, any "Small" with Cigar Advertisement (708) 295-1901

Soares, Jeanie, (Jack) 8333 E Kadota Ave Le Grand, CA 95333 (209) 382-0291
524 Openers (Rejoin)

Sommer, Robert, (Janet) 413 Scott Drive Silver Spring, MD 20904-1065 (301) 384-5456
678 Drink, Hotel, Beer Advertising Can & Bottle Openers (Today's Collector)

Sourapas, Steve 810 W Blaine St Seattle, WA 98119-2932 (206) 542-1791
574 Pre-1930 Hires Root Beer Advertising

Stanton, Dave, (Doris) 20820 Poppy St NW Oak Grove, MN 55304
687

Willing, Kenneth, (Betty) 3841 W Bass Creek Rd Beloit, WI 53511-9022 (608) 752-1387
510 Wisconsin Openers & Trays (Rejoin)

TYPE "F", "G", "H", "I" & "J" OPENER VALUES

Continuing with the price guide started in the last issue, prices for types "F", "G", "H", "I" and "J" will be given. The values presented for the types below are strictly my opinion. Of course condition, scarcity, and demand are the most important factors in determining value.

F-1	10-20	F-9	30-60	F-17	30	F-25	30
F-2	5-30	F-10	DELETE	F-18	25-40	F-26	20
F-3	10-25	F-11	50	F-19	30-40	F-27	25-40
F-4	10-25	F-12	30-50	F-20	40	F-28	30
F-5	10-25	F-13	50	F-21	30	F-29	20
F-6	5-30	F-14	35	F-22	40	F-30	60
F-7	10-20	F-15	10-20	F-23	30		
F-8	10-20	F-16	60	F-24	30		

G-1	2-25	G-10	50	G-20	8	G-30	3
G-2	2-15	G-11	50	G-21	10-20	G-31	5
G-3	2-15	G-12	1-3	G-22	5-20	G-32	5
G-3-9	30	G-13	2-10	G-23	3	G-33	5
G-4	5-20	G-14	5	G-24	3	G-34	10
G-5	5-30	G-15	3	G-25	10-20	G-35	3
G-6	1-10	G-16	3	G-26	5	G-36	3
G-7	1-10	G-17	3	G-27	8	G-37	3
G-8	1-10	G-18	3	G-28	1-3	G-38	3
G-9	1-20	G-19	50	G-29	3	G-39	3

H-1	3-20	H-4	10-30	H-7	5-10	H-10	20-40
H-2	3-20	H-5	5-10	H-8	5-40	H-11	5-10
H-3	3-20	H-6	5	H-9	40		

I-1	1-5	I-9	10-15	I-17	1-5	I-25	20
I-2	1-5	I-10	20	I-18	1-5	I-26	5
I-3	1-5	I-11	1-5	I-19	1-5	I-27	1-5
I-4	1-5	I-12	1-5	I-20	1-5	I-28	2
I-5	1-5	I-13	1-5	I-21	2-10	I-29	2
I-6	1-5	I-14	1-5	I-22	1-5	I-30	2
I-7	1-10	I-15	1-5	I-23	2-5		
I-8	15	I-16	1-5	I-24	15		

J-1	1-5	J-5	1-5	J-9	1-5	J-13	20
J-2	1-5	J-6	1-5	J-10	1-5		
J-3	1-5	J-7	5-10	J-11	1-5		
J-4	1-5	J-8	1-5	J-12	2		

Please use the following guidelines when using these prices:

- 1) **Condition** Prices are for openers in at least excellent condition.
- 2) **Scarcity** Openers with the highest prices are generally the hardest to find openers especially in nice condition. Several of the 'A' types have few examples known and this is reflected in the price.
- 3) **Demand** Malt companies or the more common brewery names are at the low end. Small breweries or breweries in business for a short time bring the highest value. Also certain areas of the country have more collectors looking for openers from that area (Ex: Missouri or Pennsylvania).

Spouse's Corner

by Pat Stanley, the Editor's Spouse

It's Friday, September 2, 1994. It's a rainy day, good time to be inside our new home, sipping coffee and composing another Spouse's Corner. John got up at 4 a.m. to drive two and a half hours to an annual antique show in Hillsville, Virginia. He took along Roger Jarrell, who was closely tied to a car phone, as Janice's due date is next Tuesday, but little "Taylor" may have different ideas. (Taylor Jarrell arrived 1:18 AM on 9-14-94, 7lbs 15 ozs, 20 3/4", baby and parents are fine).

I took the day off, since it's a great opportunity to get the computer, which is usually taken over by someone addicted to cataloging small, fascinating, old, old objects in an array of shapes with bits of history carefully inscribed.

It's not unusual to hear John chatting with someone new who has called to find out, just what JFO is and shortly thereafter, sends in their membership card. For their benefit, let me explain. In the April issue of the newsletter, a questionnaire was included asking JFO Spouses to take time to tell us their story by responding to the questions. I then, compile their response, let them proof it and publish it!!!

In July, the humorous story of Florence Deckert was an author's dream for their first issue. This quarter we will hear from Fran Biehl. Then others who have responded, in the order received are the spouses of John Kutska, Jack Ford, Vic Keown, Art Santen, Ollie Hibbeler and Bill Pattie, plus Herb White's own account of how his wife encouraged him to collect openers.

One or more of these will be presented in each newsletter. Be not afraid....If you have not written me, please do. I know your lives have not been dull, except for the rusty openers!!!!

It is very fitting that the second response I received is that of Fran Biehl's account of "Living with Larry," for he has been in our thoughts this week as he had surgery this past Monday. Ollie Hibbeler called last night to let us know that all was well and Larry would be home recovering.

Fran Biehl, Spouse of JFO Member, Larry Biehl

Fran is certainly right when she said that you can't explain that your spouse collects openers unless you have a lot of time; and then people who have been sheltered from such a past-time, living with someone living in the past...just get that dumb look on their face and say "What???" . We all know that look. If you are going to even attempt to explain, you better have a few examples of openers in your pockets. (I was careful not to say purse, because some JFO spouses are men...hope they will write me!).

Larry has always been a collector, junk most of the time, oops Fran changed that to treasures. He also collected children, a half dozen of them, who he says were by his first wife. I can just hear him telling that. The fact is that they have been married over 45 years. The good news is that he didn't sell any of the children since he had several dups. (I named my dogs Brandi and Cognac before I ever met John; an omen I'm sure. I wonder what serious collectors name their children???..especially six of them).

Fran collects mortar and pestles, very sturdy ones. This followed collecting and dropping fragile plates. The neat thing is that they got hooked on collecting at the same time and go happily hunting together. They do just about everything together, which drives their kids' nuts.

As they wander about, combing flea markets, they have become very knowledgeable about each other's collections.

Fran hits right on the mark when she says Larry's addiction in "just the love of the hunt." I have heard that before. Having them is not as exciting as finding them, especially one that you have been searching for many years.

One of her funniest collecting story includes Norm Jay. To quote her word for word:

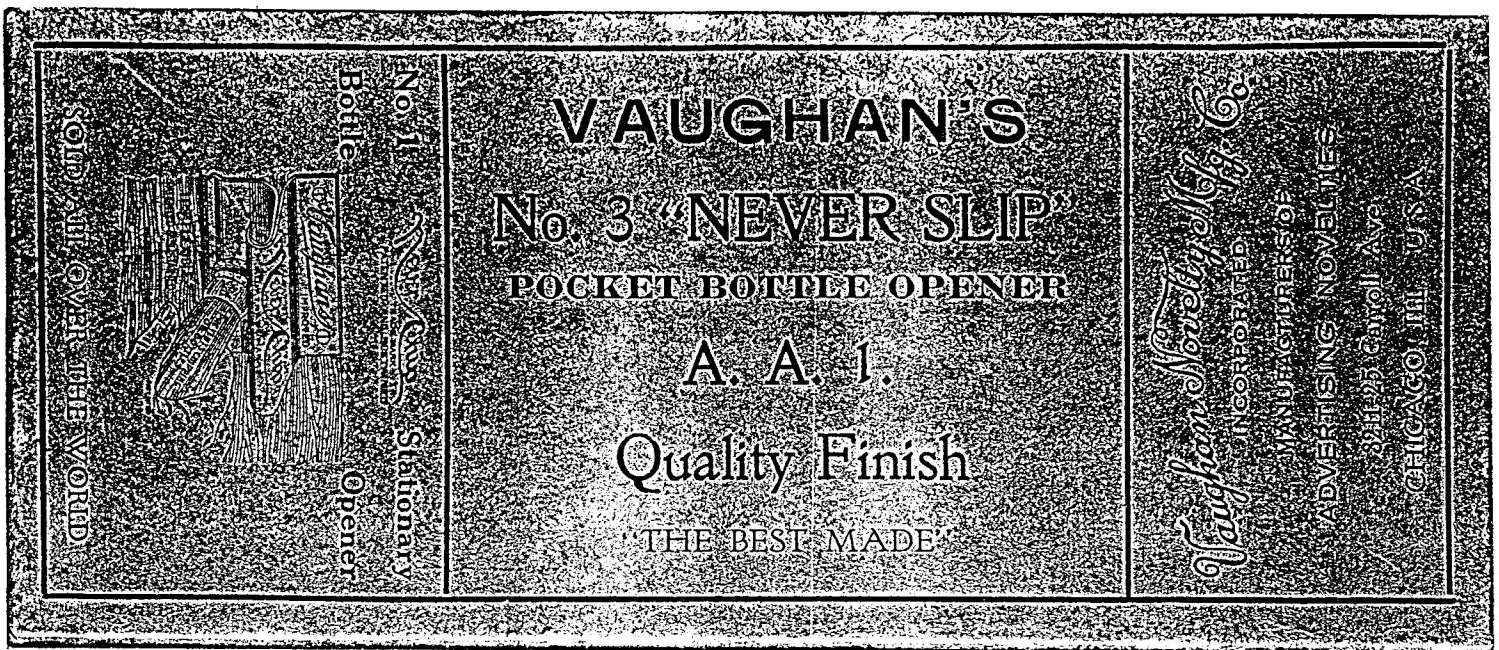
Norm Jay came over to the house one time. Them two nuts sat at a table in the basement for two hours, not saying a word-just deep in thought and passing openers back and forth like a couple of traders in the temple.

If I was concerned about the validity of what spouses write, I certainly would have no doubts about this one. At the 1992 Annual JFO Convention at Oldenberg, John missed the group lunch and a few other meals as a Chess Game of collectibles was played out in our motel room the entire week. Norm had just met me and thought I was such an "angel" to take it all so well. Of course, he described me perfectly!!! I may not remember where or from whom John acquired many items, but I do know where the Tapster that resides in the bottom left bookcase, behind glass doors came from and exactly how long it took, and how many checkmates there were.

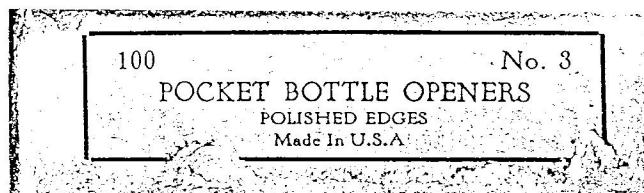
Even so, we are always glad to see Norm and was happy to meet his wife, Judy, a few months ago, who is truly an angel. (Hope she sends in her story.)

May Larry's recovery be speedy, with time going quickly as he sorts through his collection, over and over again.

OPENER CONTAINER PACKAGES



Box Package for B-24 Narragansett Openers, from the collection of John Stanley



Side Panel for the Above Box



Container Envelope for the White Rock Ginger Ale Opener Shown, from the collection of Thom Thompson

OPENER CONTAINER PACKAGES



Container Envelope for C-5-Pabst, from the collection of John Stanley

New Openers From The Brewery

ORDER YOUR ROCK POPPER

EXCLUSIVE LATROBE COMPANY STORE OFFER

Pop your Rocks with an authentic Rolling Rock Cap Catcher, just like the one at Latrobe Company Store. Simply provide the information below and mail this form along with your check for \$19.95 per Cap Catcher (includes shipping and handling). Offer limited while supplies last.

I certify I am of legal drinking age under the laws of my resident state. Enclosed is a check made payable to LATROBE COMPANY STORE in the amount of \$_____ for a total of _____ Rolling Rock Cap Catchers.

NAME _____ (Please Print)

ADDRESS _____ (No P.O. Boxes Please)

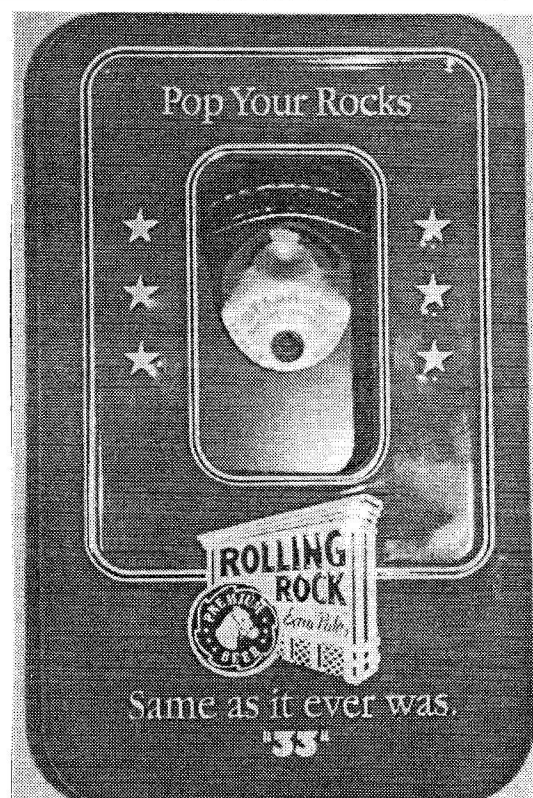
CITY _____ STATE _____ ZIP _____

PHONE(_____) _____

Texas residents please add 8.25% sales tax. Offer valid to adults of legal drinking age in their state of residence at time of submission. Allow 6-8 weeks for processing and handling. Void where prohibited or restricted by law. All Federal, State and local laws and regulations apply. Offer limited while supplies last.

Mail order today to: Latrobe Company Store, PO Box 3333, Latrobe, PA 15650-3333

© 1994 Latrobe Brewing Co., LATROBE, PA. RUS6951293



The O-5 shown above has just been put out by Rolling Rock and can be ordered from the Latrobe Company Store for \$19.95 (includes shipping and handling, Texas residents add 8.25% sales tax). This is a limited offer. The O-5 is mounted in an attractive green plastic container (cap catcher). Allow 6-8 weeks for delivery. Send order to Latrobe Company Store, PO Box 3333, Latrobe, PA 15650-3333. Copy of order form is also shown.

The new Yuengling's C-37 shown in the new discoveries can be ordered from your editor for \$4.00 postpaid. Send to John Stanley, 3712 Sunnydale Way, Durham, NC, 27707-5684

1994 New Discoveries

A-57 HORSE HEAD & BOTTLE
NO GAS KEY
MARKED "C.T. & O.CO./MADE IN USA"
2 7/8"
MARC BENJAMIN

1995 (1)

1. BEN'S BUSY BEE CUT RATE MALT CO.
LAFAYETTE 6077 6711 MICHIGAN
AVE.

C-47
CAP LIFTER/BLIMP
5 1/4"
ART SANTEN

1995 (1)

1. BUD LIGHT BEER BUDWEISER BUD DRY
DRAFT BUD BOWL V BUD ONE KING
OF BEERS

F-30
CAP LIFTER/BUTTON HOOK
6 1/8"
BEN HOFFMAN

1995 (1)

1. WIEDEMANN'S BEER. / YUENGLING'S
PORTER

G-37
CAST IRON CAP LIFTER
WITH PLASTIC INSERT
4"
HAROLD QUEEN

1995 (1)

1. YUENGLING BREWERS AND BOTTLERS
AMERICA'S OLDEST BREWERY
POTTSVILLE, PA.

G-38
CAP LIFTER
(SEE G-15, G-16, G-17, G-18,
G-23, G-24, G-29 & G-30)
3 3/8"
ART SANTEN

1995 (1)

1. COORS RODEO

G-39
CAST IRON CAP LIFTER
WITH PLASTIC INSERT
2 5/8"
MARC BENJAMIN

1995 (1)

1. MILLER GENUINE DRAFT RACING TEAM
MCO

I-30
CAP LIFTER/CAN PIERCER
PLASTIC INSERT HANDLE
4 5/8"
DON WHELAN

1995 (1-4)

1. OLD MILWAUKEE BEER (RED ON
WHITE)
2. SCHAEFER BEER (WHITE ON RED)
3. SCHLITZ (WHITE ON RED)
4. STROH'S PREMIUM AMERICAN BEER
(WHITE ON BLUE)

M-99
CAP LIFTER/CAN PIERCER
6 5/8"
DON WHELAN

1995 (1)

1. FALSTAFF (IN SHIELD)

M-100
CAP LIFTER/PLASTIC HANDLE
REVERSE TWO PLASTIC BOTTLE RECAPPERS
5 3/4"
MARC BENJAMIN

1995 (1)

1. GENESEE BEER COMPLIMENTS OF
ALBION PRODUCTS CO., INC.
YOUR GENESEE BEER DISTRIBUTOR
ALBION, N.Y. PHONE 589-5588

M-101
CAP LIFTER/CAN PIERCER
4"
DON WHELAN

1995 (1)

1. BUDWEISER KING OF BEERS

M-102
CAP LIFTER/CAN PIERCER
5 1/4"
OLLIE HIBBELER

1995 (1)

1. BUDWEISER

N-71
CAP LIFTER/HATCHET/MEAT TENDERIZER
5 1/2"
MARC BENJAMIN

1995 (1)

1. GRAIN BELT COMPLIMENTS OF
ROYALTON BEVERAGE CO. DIST.
OF GRAIN BELT BEER

N-72

CAP LIFTER BLADE/THREE BLADE KNIFE
3"
NORM JAY

1995 (1)

1. FALSTAFF (IN SHIELD) FALSTAFF
BOWLING LEAGUE 1960

N-73

CAP LIFTER IN KNIFE BLADE/
TWO BLADE KNIFE
MARKED "CHRISTIANS / RCM"
3 5/8"
NORM JAY

1995 (1)

1. ANHEUSER BUSCH

N-74

CAP LIFTER BLADE/FILE BLADE/
THREE BLADE KNIFE
ORNATE HANDLES
MARKED "E K A, ESKILSTUNA"
MADE IN SWEDEN
2 1/8"
DON BULL/PETE NOWICKI

1995 (1)

1. SINCE 1865 HAMM'S / (BACK MARKED
WITH OWNER'S NAME)

N-75

OPENER/SINGLE BLADE KNIFE/
SCREWDRIVER TIP
MARKED
"BASSETT, MADE IN U.S.A., PATENTED"
(SEE N-3)
2 1/4"
LARRY BIEHL

1995 (1)

1. HAMM'S BEER SEASONS GREETINGS
HARRY FRAHM

N-76

CAP LIFTER
HANDLE HAS BOTTLE & GLASS OF BEER
WHEN HELD ONE WAY GLASS FILLS UP
WHEN HELD OTHER WAY GLASS DISAPPEARS
4 3/4"
HAROLD QUEEN

1995 (1)

1. BUDWEISER (ON BOTTLE) (GLASS OF
BEER) / NICK STADLER
PIPERSVILLE, PENNA. PHONE
ROGER 6-8881

N-77

BOTTLE OPENER/HAMMER/NUT CRACKER/
ICE BREAKER/BALL PEEN/
AWL OR PUNCH/MEDIUM & TINY SCREWDRIVERS
MADE BY THE VERNON CO. NEWTON, IOWA
5 1/4"
VERNE VOLLRATH

1995 (1)

1. CHIEF OSHKOSH CUSTOM BREWED FOR
ALL WISCONSIN "B-GOSH IT'S
GOOD"

N-78

CAP LIFTER/GAS KEY/WATCH FOB
(SEE N-49)
2 1/2"
BOB STAHL

1995 (1)

1. DRINK "GOLD TOP" BOTTLED BEER

P-106

CORKSCREW/CAP LIFTER/CAN OPENER
SQUARED END HANDLE (SEE P-23)
(SEE P-23 & P-37)
ART SANTEN

1995 (1)

1. MOUND CITY MALT SYRUP

P-107

CORKSCREW/DOUBLE BLADE KNIFE
MOTHER OF PEARL HANDLES
MARKED "J.A. HENCKELS, SOLINGEN"
(SEE P-25,26,29,34,38,39,40,47,48,
65,69,71,96,101,102,105,108 & 110)
DON BULL

1995 (1)

1. A.B.C. / ST. LOUIS

P-108

SLIDING CORKSCREW/DOUBLE BLADE KNIFE
BRASS HANDLES
MARKED "M. WORMSER GERMANY"
(SEE P-25,26,29,34,38,39,40,47,48,
65,69,71,96,101,102,105,107 & 110)
DON BULL

1995 (1)

1. C. PFEIFFER BREWG. CO. /
LINGUTER TRUNK MACHT ALLE
JUNG!

P-109

FOLDING CORKSCREW
CALLED "THE DAINTY" MADE BY
THE VAUGHAN NOVELTY MFG. CO. CHICAGO
DON BULL

1995 (1-2)

1. COMPLIMENTS OF POPEL-GILLER CO.
WARSAW, ILL.
2. SUNRISE PALE DRY

P-110

CORKSCREW/BUTTON HOOK/FILE BLADE/
TWO BLADE KNIFE
MOTHER OF PEARL HANDLES
(SEE P-25,26,29,34,38,39,40,47,48,
65,69,71,96,101,102,105,107 & 108)
DON BULL

1995 (1)

1. EAGLE BREWING CO. / LEMBECK &
BETZ (ON MASTER & PEN BLADES)
LEMBECK & BECK / GERMANY (ON
FILE BLADE)

P-111

BAR MOUNT CORKSCREW (1 SCREW CLAMP)
LEVER HANDLE FOR
INSERTING SCREW IN CORK &
FOR EXTRACTING CORK
CLAMP FOR HOLDING BOTTLE
(SEE P-30, P-35, P-45,
P-64, P-83 & P-84)
PETE NOWICKI

1995 (1)

1. THEO. HAMM BREWING CO. / ST.
PAUL, MINN.

P-112

CORKSCREW/CAP LIFTER/
WIRE BREAKER/LEVERAGE HOOK
"WAITERS' TOOLS"
(SEE P-20, P-21, P-27,
P-28, P-49 & P-92)
VERNE VOLLRATH

1995 (1)

1. RAHR "MALT OF REPUTATION" RAHR /
SAME

P-113

CORKSCREW (SIMILAR TO SWISS ARMY KNIFE)
MADE BY
COLONIAL KNIFE COMPANY PROVIDENCE, RI
(SEE P-104)
DON BULL

1995 (1)

1. COORS

P-114

FOLDING CORKSCREW
CELLULOID STRIPED LADIES LEGS
(SEE P-79)
DON BULL

1995 (1)

1. VAL. BLATZ BR'G CO., MADE IN
GERMANY (ON SHANK)

P-115

WOOD HANDLE CORKSCREW
SPRING BARREL OVER SHAFT
STRAIGHT PIN TO STOP SPRING (SEE P-52)
(SEE P-8,9,10,17,22,24,32,42,43,
50,51,52,55,56,57,59,60,61,67,75,76,
77,78,81,82,86,90,93 & 95)
MARKED "GERMANY"
DON BULL

1995 (1)

1. L.B. CO., PILSENER & MONASTERY
BEER, LATROBE, PA. / SAME

Q-45

TWIST OFF CAP REMOVER/
HALF OF A GOLF BALL
1 5/8"
MARC BENJAMIN

1995 (1)

1. SHARPS

Q-46

CAP LIFTER/BASEBALL DESIGN
3"
MARC BENJAMIN

1995 (1)

1. MEISTER BRAU

Q-47

TOP POPPER FOR CAN TABS
7"
ART SANTEN

1995 (1)

1. BUDWEISER KING OF BEERS (RED ON
WHITE)

Q-48

CAP LIFTER/FOOTBALL SHAPED HANDLE
3 1/2"
OLLIE HIBBELER/MARC BENJAMIN

1995 (1-2)

1. MILLER BREWING COMPANY REMINDS
YOU TO PLEASE THINK WHEN YOU
DRINK / MILLER GENUINE DRAFT
LIGHT
2. MILLER BREWING COMPANY REMINDS
YOU TO PLEASE THINK WHEN YOU
DRINK / MILLER HIGH LIFE

X-7

CAP LIFTER/CAN PIERCER
4"
BEN HOFFMAN

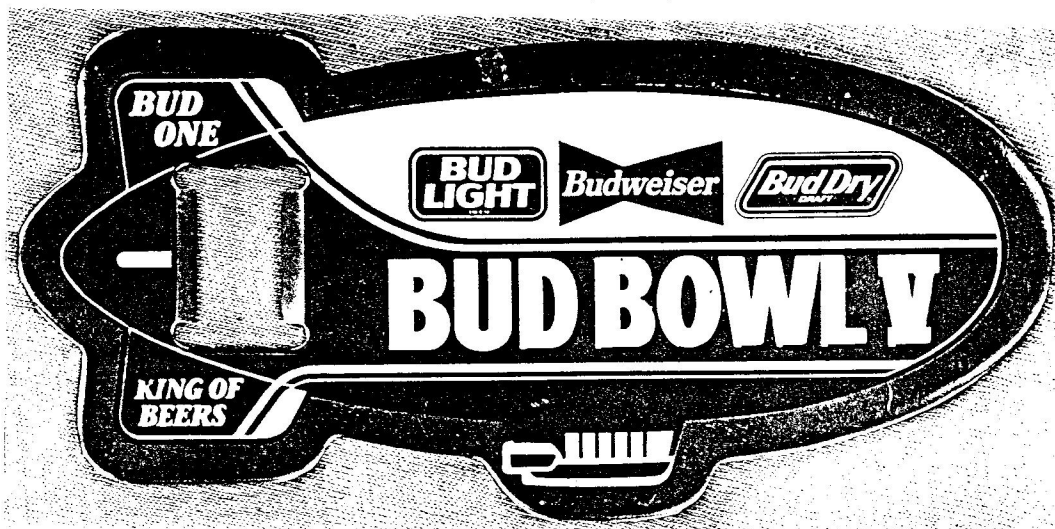
1995 (1)

1. JUST FOR OPENERS 16TH ANNUAL
CONVENTION READING, PA APRIL
1994

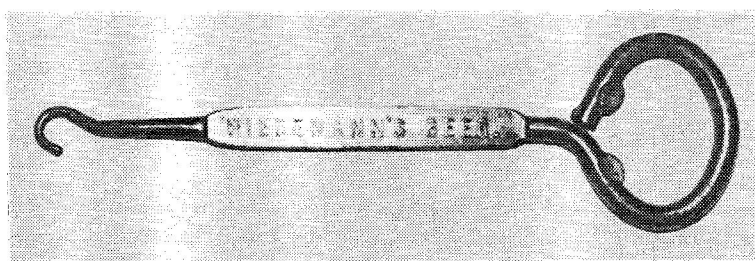
1994 New Discoveries Pictures (NAS - Not Actual Size)



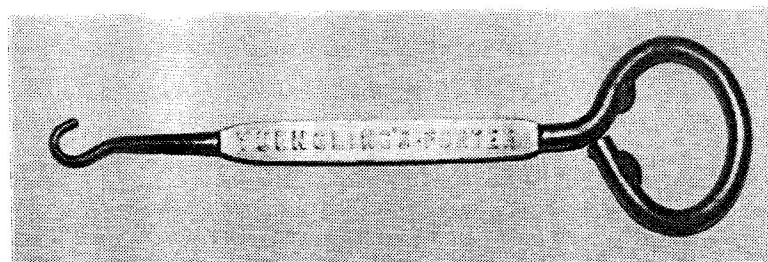
A-57 (NAS)



C-47



F-30 Front (NAS)



F-30 Back (NAS)

1994 New Discoveries Pictures (NAS - Not Actual Size)



G-37



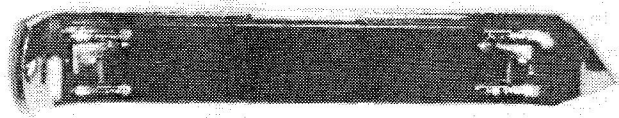
G-38



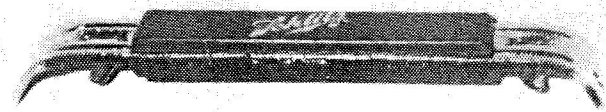
G-39 (NAS)



I-30 TOP (NAS)

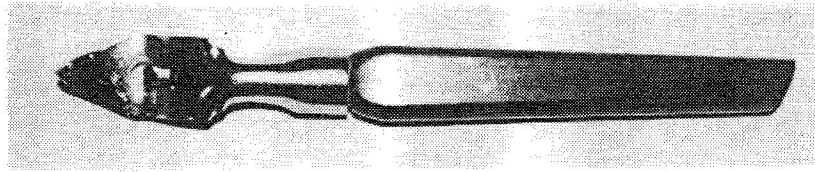


I-30 BOTTOM (NAS)

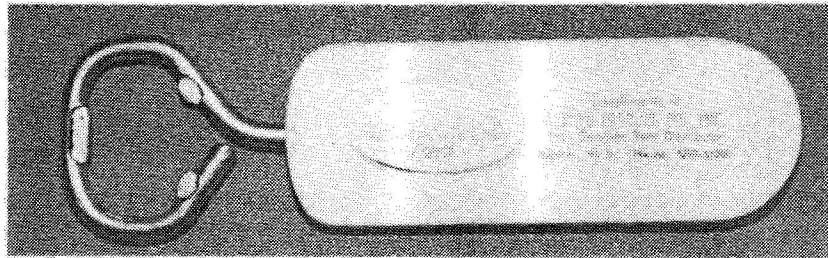


I-30 SIDE (NAS)

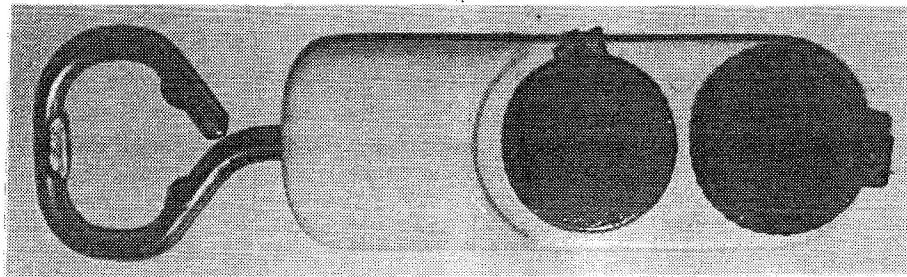
1994 New Discoveries Pictures (NAS - Not Actual Size)



M-99 (NAS)



M-100 TOP (NAS)



M-100 BOTTOM (NAS)

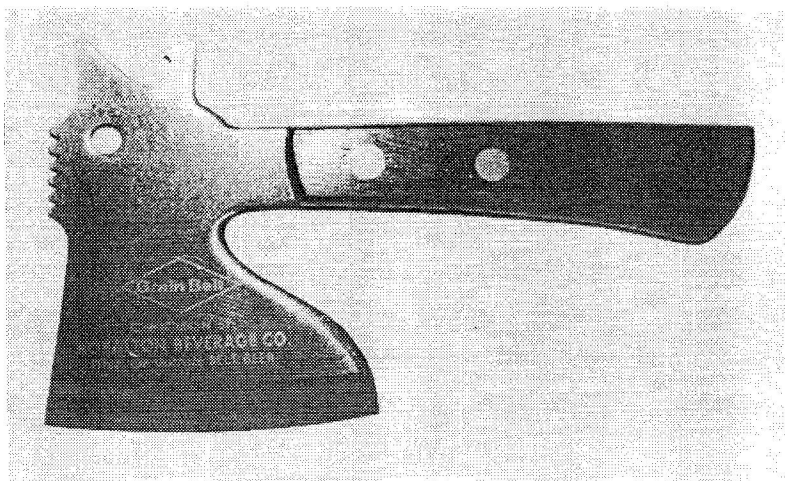


M-101

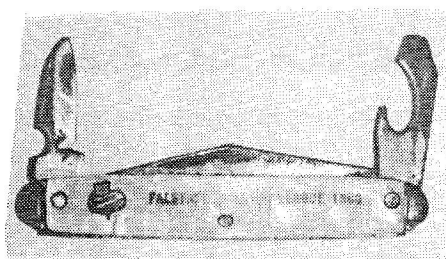


M-102

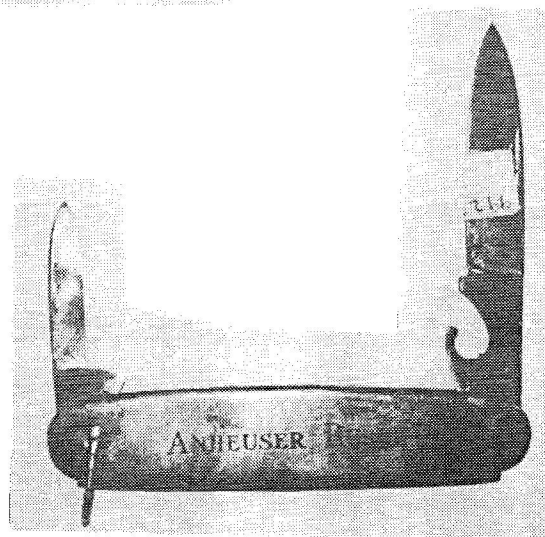
1994 New Discoveries Pictures (NAS - Not Actual Size)



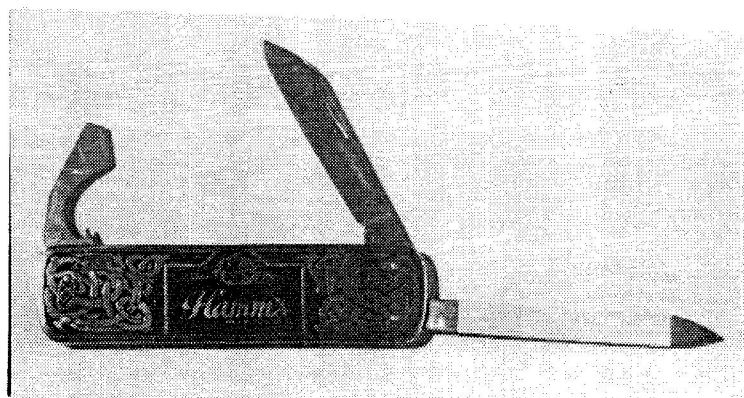
N-71 (NAS)



N-72



N-73

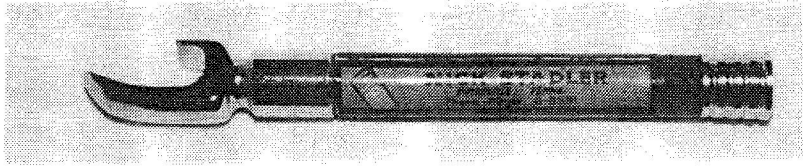


N-74

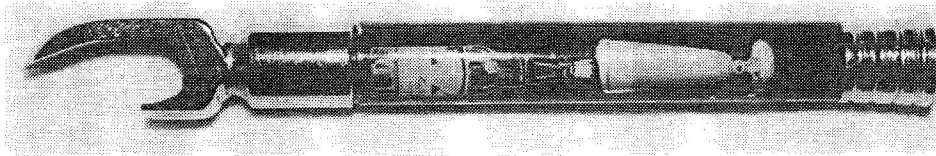


N-75

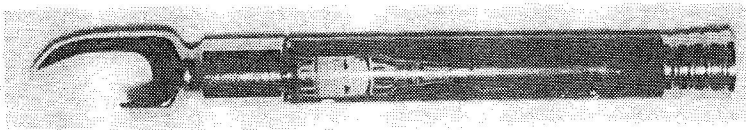
1994 New Discoveries Pictures (NAS - Not Actual Size)



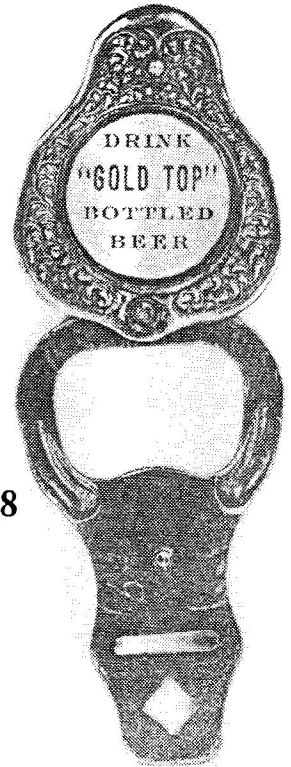
N-76 (NAS)



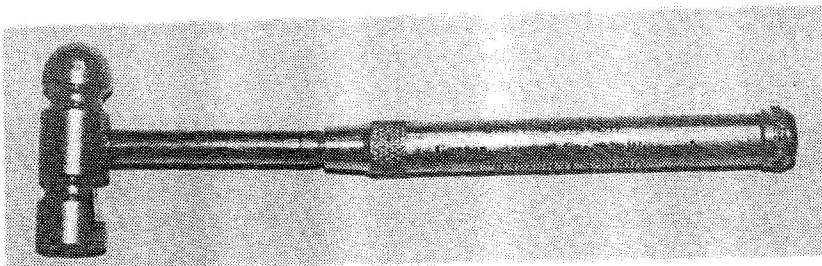
N-76 (WITH GLASS)



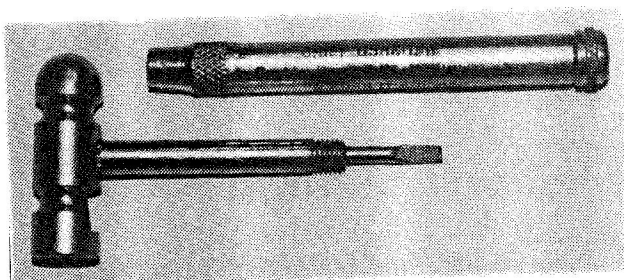
N-76 (NO GLASS) (NAS)



N-78



N-77 (NAS)

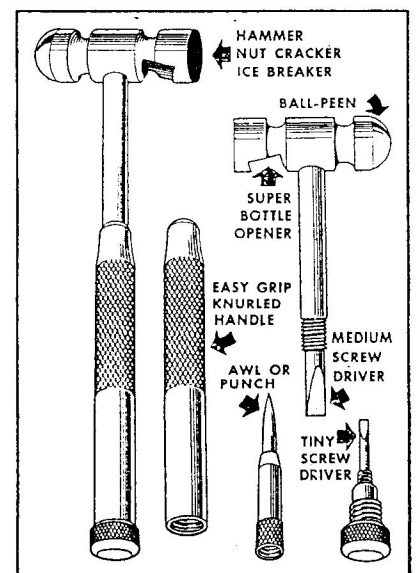


N-77 (NAS)

N-77 ADVERTISEMENT

Handy Tool Kit for

Housewife - Hobbyists - Fisherman
Hunters - Doctors - Dentists
Carpenters - Engineers - Electrician.

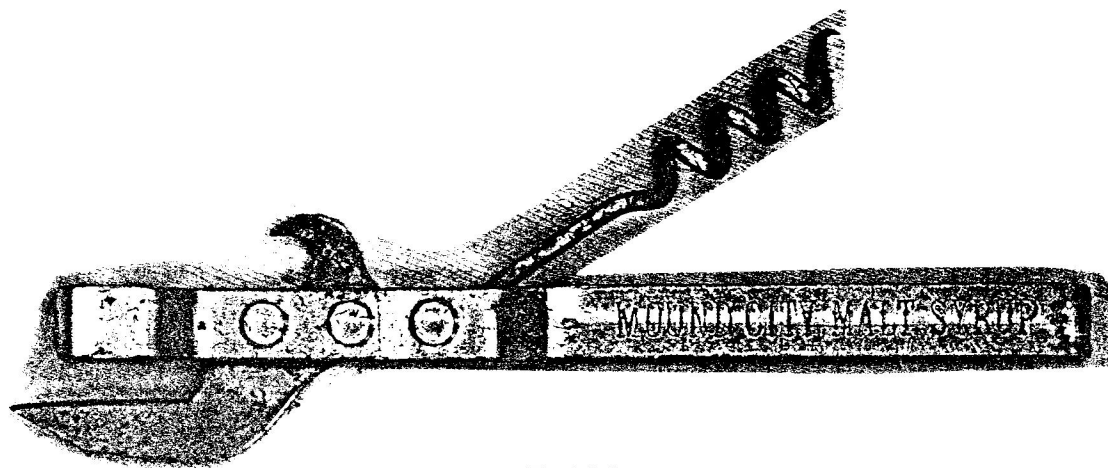


Another Long Lasting Utility
Advertisement

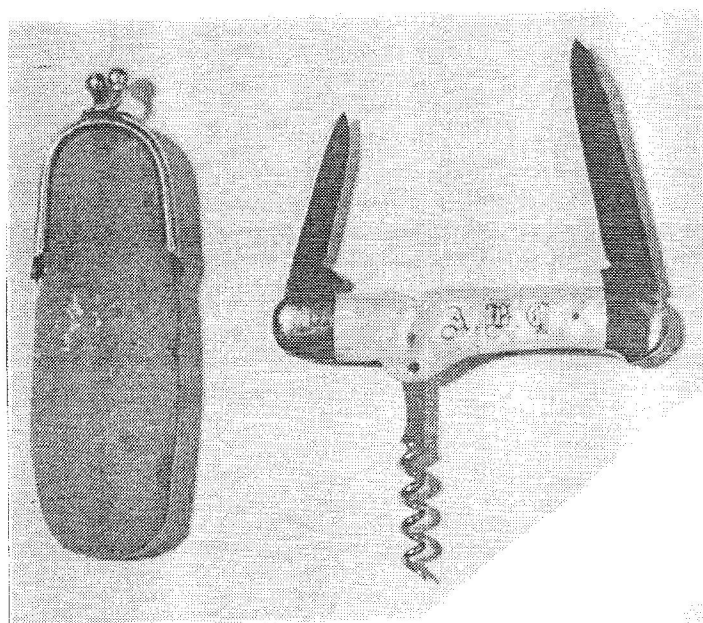
By

THE VERNON CO. - NEWTON, IOWA

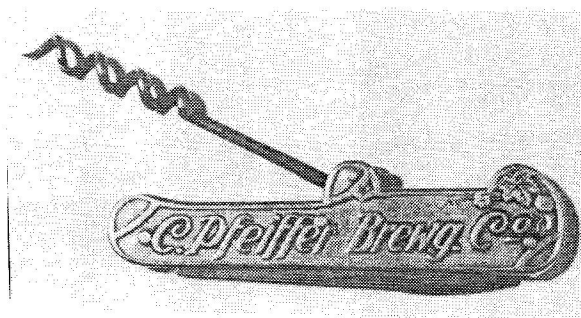
1994 New Discoveries Pictures (NAS - Not Actual Size)



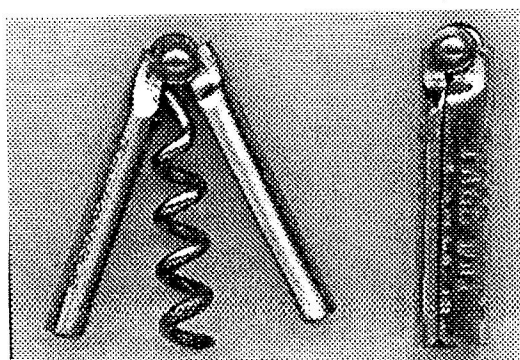
P-106



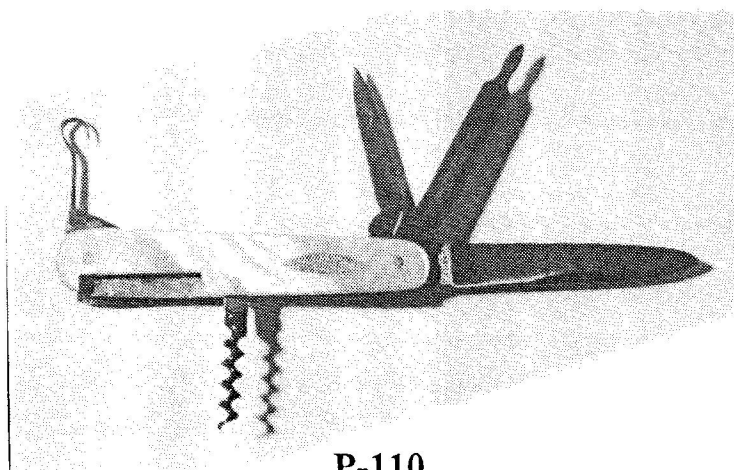
P-107 (NAS)



P-108 (NAS)

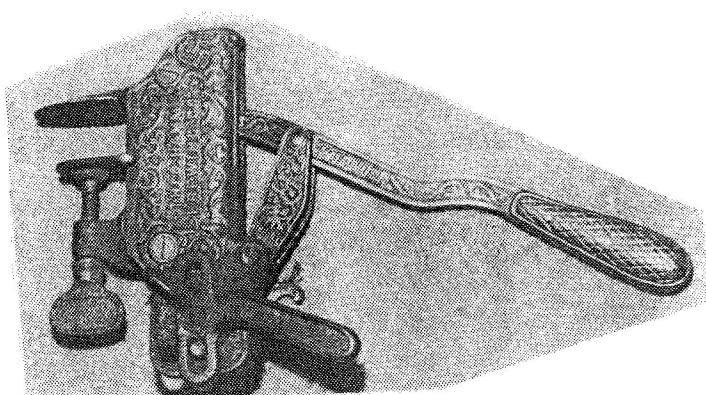


P-109

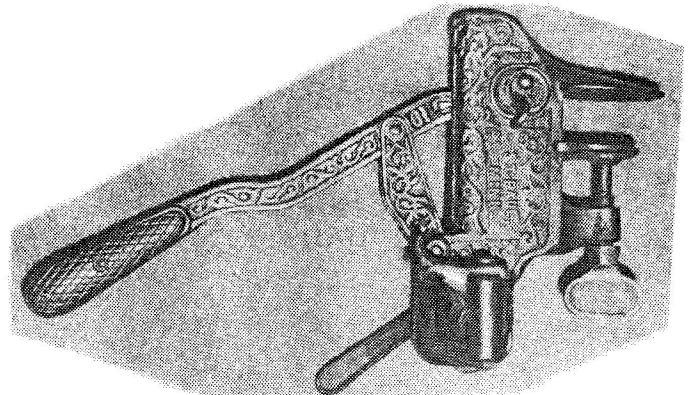


P-110

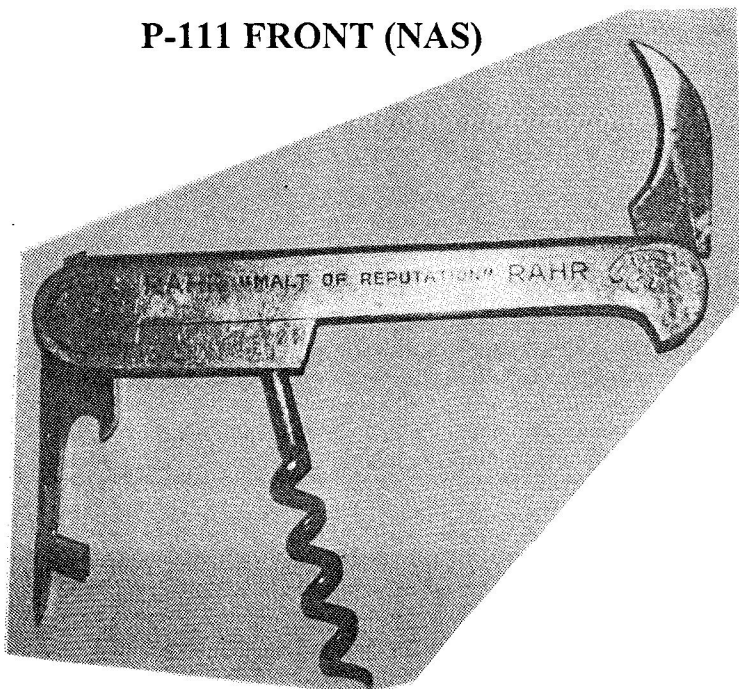
1994 New Discoveries Pictures (NAS - Not Actual Size)



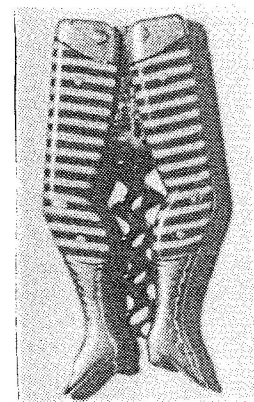
P-111 FRONT (NAS)



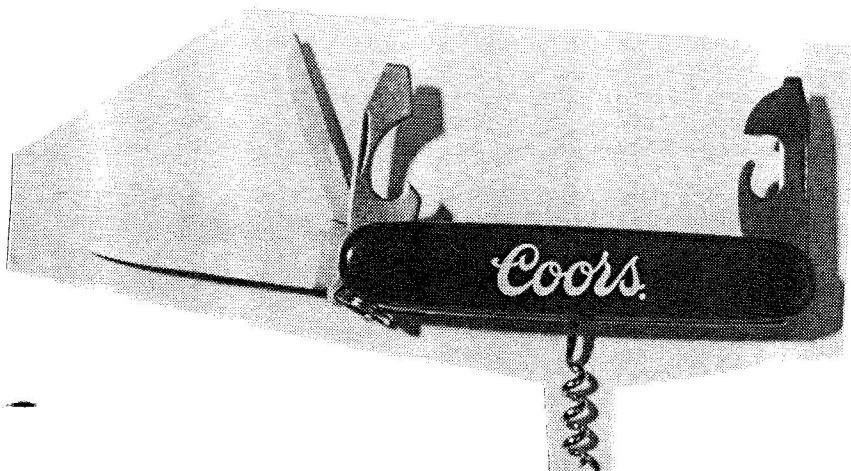
P-111 BACK (NAS)



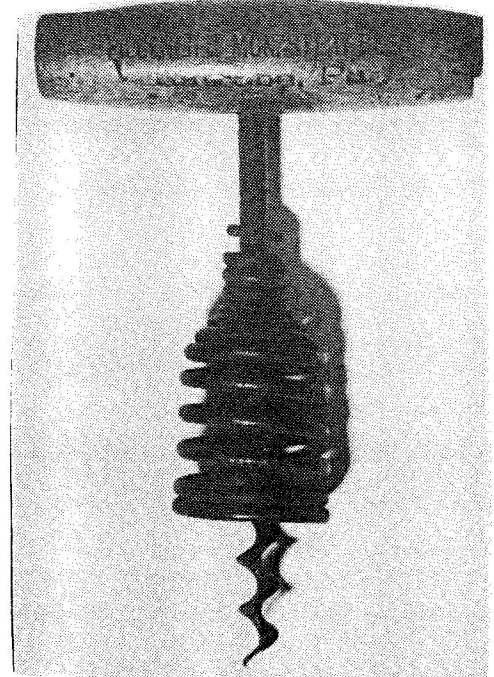
P-112



P-114

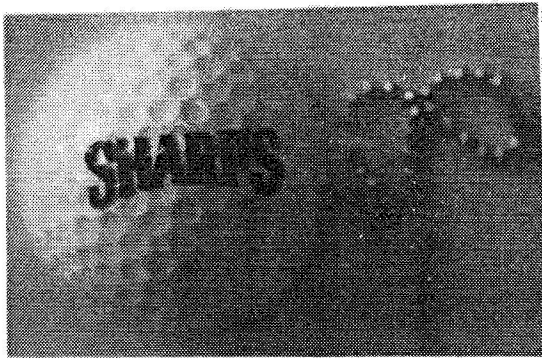


P-113 (NAS)

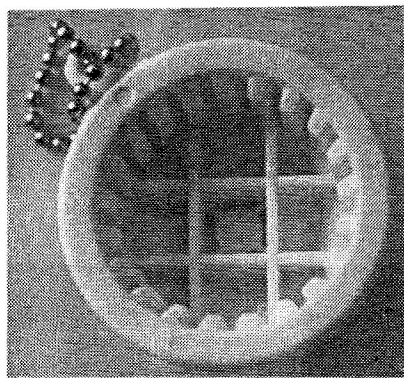


P-115 (NAS)

1994 New Discoveries Pictures (NAS - Not Actual Size)



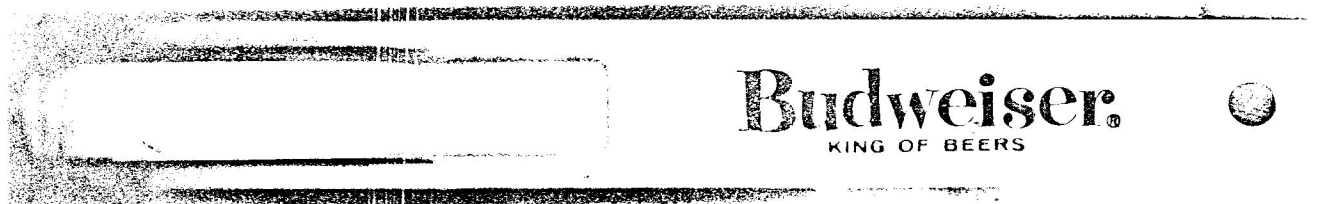
Q-45 TOP



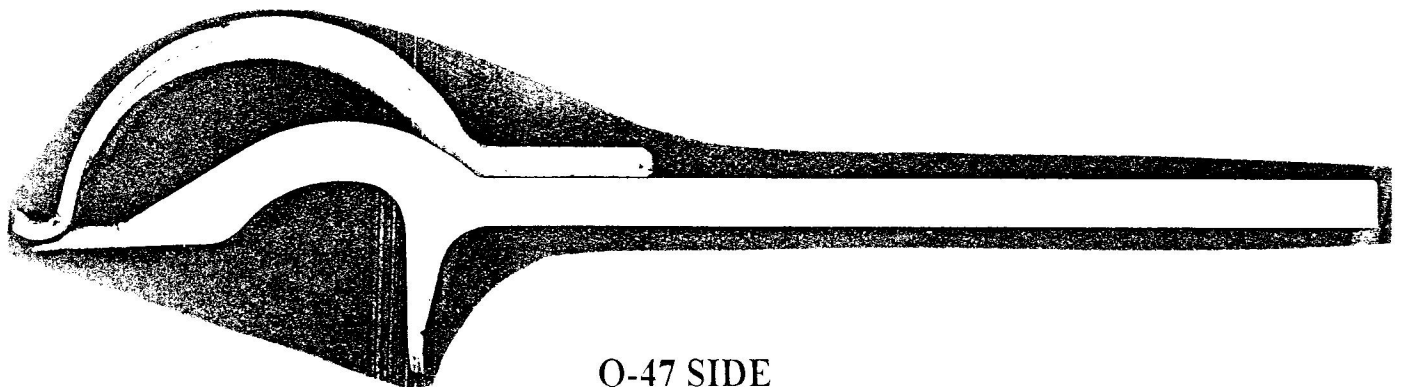
Q-45 BOTTOM



Q-46



Q-47 TOP

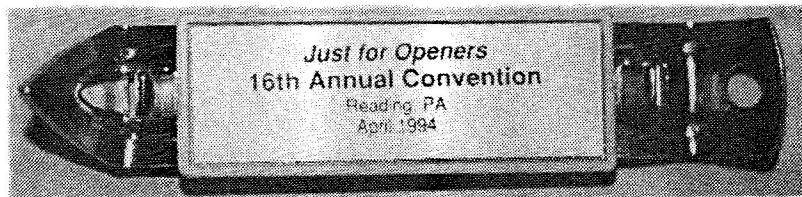


Q-47 SIDE

1994 New Discoveries Pictures (NAS - Not Actual Size)



Q-45



X-7

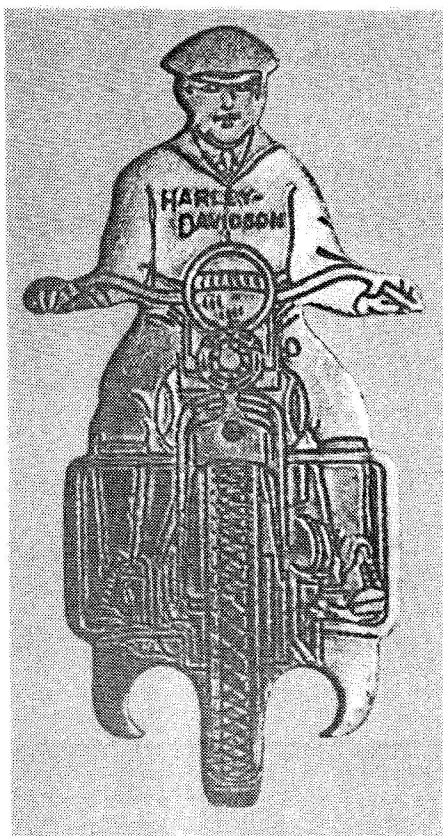


"CORRECTIONS", NEW "ADDITIONS" & NEW "DISCOVERIES"

Please send any corrections, new additions or new discoveries to the editor, John Stanley. When sending in new additions if possible try to send in xerox copies of the additions (front and back). This helps in catching mistakes and verifying the opener type. For new discoveries a good photograph or drawing is best, but xeroxing is fine if that is the only means you have. When xeroxing, it is usually best to set the machine on its lightest setting.

Deadlines for New Discoveries each year will be September 1st

Deadlines for New Additions each year will be December 1st

RARE Harley-Davidson Opener**Cast Iron Wall Mount Brings Record Price****"HARLEY-DAVIDSON" (Spinner)**

From The Collection
of Marc Benjamin



THE NORWEGIAN, a cast-iron bottle opener, is thought to be unique. It sold at a mail-telephone auction for \$1,201, the highest price recorded for a bottle opener. The red cap and comic smile of this piece attracted many collectors.

(Photo courtesy Donald Bull, Stamford, Conn.)

From Antique Week

Future Just For Openers Auctions

If any member would like to send in openers for future JFO Auctions please notify me. I would like any opener to have a projected value of at least \$5.00. I am planning on running about 70 openers each newsletter and would accept from 5 to 10 openers or corkscrews per member. If you would like to send in more just ask and I will see what I can workout. There will be no commission charge to the member. Hopefully the auction could become a good source of openers and corkscrews for JFO members. Interested parties feel free to contact me. If there is a good response I could increase the size of each auction to 130 openers and corkscrews.

RESULTS July 1994 Just For Openers Auction Closing August 17, 1994

75 Openers were sold for \$624.57. Most bids were competitive. Ex: N-29-002 received two bids for \$21.00 and one bid for \$20.00. C-25-001 received two bids one for \$25.00 and one for \$24.77.

JFO # & Description are from the 1994 Handbook Of Beer Advertising Openers and Corkscrews
Conditions (CS): F (Fair), G (Good), VG (Very Good), EX (Excellent), M (Mint)
(UL-Unlisted in 94 Handbook, XX-Non-Beer)

RESULTS July 1994 Just For Openers Auction Closing August 17, 1994

#	JFO #	Description	ST	CS	BID
01	A-07-XX	BURT SEBRING, BEER ALE & LIQUORS CORNING, N.Y.	NY	G	3.29
02	A-28-027	DRINK DAVENPORT MALTING CO. UNEXCELLED BEER DAVENPORT, IOWA	IA	G	16.50
03	B-01-008	HAMM'S FAMOUS BEER HAMM'S ST. PAUL (No Paint)	MN	G	8.50
04	B-02-007	FRED KRUG BREWING CO. LUXUS THE BEER YOU LIKE	NE	G	7.50
05	B-04-002	SCHEIDT'S VALLEY FORGE SPECIAL BEER (STEEL)	PA	VG	18.99
06	B-13-042	BLATZ MILWAUKEE / DRINK OLD HEIDELBERG	WI	G	6.10
07	B-14-025	GRAND PRIZE BEER / TOP OF THE BREW	TX	VG	2.00
08	B-14-026	DRINK HAMM'S BEVERAGES ST. PAUL, MINN. / WINDSOR CLUB THE REAL BEER TASTE	MN	EX	6.36
09	B-14-047	ALPEN BRAU	MO	VG	3.50
10	B-14-055	MINNEAPOLIS BREWING CO. MINNEAPOLIS U.S.A. MINNEHAHA	MN	G	5.00
11	B-14-078	PETER BUB BREWERY WINONA, MINN. / BUB'S GERMAN STYLE	MN	F	20.00
12	B-14-106	CERVA MADE IN ST. LOUIS (LEMP BREWING) / CERVA A SOFT DRINK	MO	VG	20.00
13	B-14-107	DRINK FITGERS BEVERAGES	MN	VG	12.50
14	B-18-010	DRINK BUSHKILL LAGER / EASTON, PA.	PA	VG	4.79
15	B-18-046	KEY TO METZ BROS. BR'G CO. OMAHA'S FAVORITE BEER	NE	EX	27.00
16	B-18-048	MINNEAPOLIS BREWING CO. GOLDEN GRAIN BELT BEERS	MN	F	10.00
17	B-18-077	COMPLIMENTS OF SUNSET BREWING CO. WALLACE, IDAHO	ID	VG	12.76
18	B-18-103	KEY TO GLUEK'S BEER MINNEAPOLIS	MN	VG	12.11
19	B-18-105	GOLDEN GRAIN BELT BEERS	MN	F	10.00
20	B-18-107	HAMM'S ST. PAUL	MN	EX	5.00
21	B-18-117	DRINK SCHMIDT'S BEER ST. PAUL'S FAMOUS	MN	F	3.26
22	B-18-118	DRINK SCHMIDT'S FAMOUS FOR QUALITY ST. PAUL, MINN.	MN	G	11.12
23	B-18-148	KEY TO SCHUSTER'S MALT & HOP TONIC ROCHESTER, MINN. / DRINK SCHUSTER'S RED & WHITE BEER	MN	F	25.00
24	B-18-166	COMPLIMENTS OF THE CROWN BREWING CO. CINCINNATI, O. / DRINK CROWN BEER	OH	G	13.66
25	B-18-206	PARK BREWING CO. WINONA, MINN. KEY TO PARK MALT EXTRACT (Listed Wrong as #203)	MN	F	10.00
26	B-18-208	ASK FOR PFAFF'S LAGER	MA	F	6.86
27	B-18-398	MINNEAPOLIS BREWING CO. GOLDEN GRAIN BELT BEER IS GOOD BEER	MN	G	11.12
28	B-19-037	THE WASHINGTON BREWING CO. "PILSENER" FOR ME	OH	G	12.76
29	B-19-047	CALL FOR FLECK'S BEERS FARIBAULT, MINN.	MN	F	6.26
30	B-19-077	DULUTH BREWING & MALTING CO. DULUTH, MINN. / SAME	MN	G	12.00
31	B-19-104	DRINK SCHELLHAS WINONA BEER	MN	VG	12.76
32	B-19-123	GUND'S PEERLESS BEER GOOD SINCE 1854	WI	G	4.00
33	B-19-149	DES MOINES BREWING CO. DES MOINES, IOWA / DRINK OLD TAVERN BEER	IA	G	3.29
34	B-19-166	KEY TO HAMM'S FAMOUS BEERS ST. PAUL	MN	VG	8.00
35	B-19-170	MINNEAPOLIS BREWING CO. GOLDEN GRAIN BELT BEERS (Large Letters)	MN	VG	8.00
36	B-19-170	MINNEAPOLIS BREWING CO. GOLDEN GRAIN BELT BEERS (Small Letters)	MN	M	8.00

37	B-21-065	PPAFF'S BEER	MA	G	4.00
38	B-21-124	PARK BREWING CO. WINONA, MINN. / CALL FOR SUNSHINE BEER	MN	G	13.00
39	B-21-208	CALL FOR SCHMIDT'S BEER ST. PAUL'S FAMOUS	MN	F	5.41
40	B-21-249	KEY TO GLUEK'S BEER MINNEAPOLIS	MN	G	11.12
41	B-21-334	COMPLIMENTS OF THE SUNSET BREWING CO. WALLACE, IDAHO	ID	VG	12.76
42	B-22-014	MINNEAPOLIS BREWING CO. GOLDEN GRAIN BELT BEERS	MN	VG	3.79
43	B-22-034	CALL FOR SCHMIDT'S BEER ST. PAUL'S FAMOUS	MN	VG	7.86
44	B-22-105	COLD SPRING BREWING CO. LAWRENCE, MASS	MA	VG	10.00
45	B-23-054	GLUEK BRG. CO. MINNEAPOLIS KEY TO "GLUEK DRINKS"	MN	E	5.36
46	B-23-079	DRINK SCHMIDT'S SELECT	MN	E	10.00
47	B-24-095	ASK FOR FLECK'S QUALITY BEVERAGES SINCE 1856	MN	VG	10.00
48	C-13-056	HAMM'S SMOOTH MELLOW BEER	MN	G	4.00
49	C-13-098	SCHMIDT'S BEER NO SUGAR NO GLUCOSE / SAME	MN	G	2.90
50	C-20-026	LEBANON VALLEY EXPORT BEER-ALE-PORTER (LV LOGO)	PA	G	10.00
51	C-25-001	KINGS BREWERY INC. BROOKLYN, NEW YORK KINGS BEER PILSNER STYLE FIT FOR A KING MADE WITH IMPORTED HOPS AND CHOICEST MATERIALS	NY	F	25.00
52	E-03-044	BUCKEYE BREW'G CO. GREEN SEAL BEER	OH	VG	5.16
53	E-04-033	FALLS CITY BREWING CO. LOUISVILLE, KY. / FALLS CITY BEER	KY	F	2.79
54	E-04-088	GEO. F. STEIN BREWERY INC. BUFFALO, N.Y. / STEINS DRY HOP ALE AND PILSENER BEER	NY	EX	8.05
55	E-04-XX	DRINK MOXIE / DRINK PUREOXIA		G	5.50
56	E-06-003	BANKER'S ALE LUCKY LAGER / SAME		VG	4.79
57	E-07-007	M.K. GOETZ BREWING CO. ST. JOSEPH, MO. / DRINK COUNTRY CLUB COUNTRY CLUB SPECIAL	MO	VG	2.60
58	E-14-004	ACME BREWERIES SAN FRANCISCO / ACME BEER	CA	VG	1.29
59	E-14-019	BECKER'S BEST BEER	UT	G	2.93
60	E-14-024	BLACKHAWK BEER BLACKHAWK BEER	IA	VG	4.00
61	E-14-043	CASPER BREWING CO. CASPER, WYOMING / HILLCREST PILSENER PALE-DRY	WY	VG	4.00
62	E-14-075	ENTERPRISE BREWING CO. FALL RIVER, MASS. / THE BEST OLD TAP ALE	MA	VG	3.61
63	E-14-174	LEINENKUGEL CHIPPEWA'S PRIDE BEER	WI	G	2.60
64	E-14-184	METZ BEER GOLDEN SPIKE BEER SINCE 1864 / METZ BEER METZ JUBILEE BEER SINCE 1864	NE	VG	3.00
65	E-14-298	WEST BEND LITHIA CO. WEST BEND, WISCONSIN / SAME	WI	G	3.61
66	E-14-419	PEARL BREWING CO. PEARL BREWING CO. / PEARL BEER PEARL BEER	TX	VG	4.00
67	E-14-451	UTICA CLUB THE FAMOUS UTICA BEER / SAME	NY	EX	5.75
68	E-14-687	DUBUQUE STAR BEER REACH FOR A STAR / SAME	IA	G	7.50
69	F-02-012	CRYSTAL ROCK PALE DRY / SAME	PA	VG	5.00
70	G-13-XX	DRINK COCA-COLA (Similar to G-13)		VG	3.99
71	H-02-034	RAHR GREEN BAY BREWING CORP. GREEN BAY, WIS. OLD IMPERIAL AND VAN DYCK BEER	WI	F	3.10
72	H-03-038	WAYNE BREWING CO. ERIE, PA. WAYNE BEER & ALE	PA	VG	2.50
73	I-11-211	RICHBRAU BEER / SAME	VA	G	2.50
74	N-29-002	ALPEN BRAU BEER G.E. WILLIAMS & CO. DISTRIBUTOR EFFINGHAM, ILL.	IL	EX	21.00
75	N-29-UL	DRINK C-V BEER KELLY'S SANDWICH SHOPPE HOOPESTON, ILL.	IL	EX	12.11

AUCTION NEWS

Joe Cardone's Auction. Joe Cardone has been running monthly auctions since JFO started in 1979. He usually offers between 200 openers/corkscrews each auction. The main emphasis is on beer advertising openers. There is no charge for the auction. Anyone interested or anyone wanting Joe to sell (20% commission) their collection should contact:

Joe Cardone, 1833 Rosemont Blvd., Dayton, Ohio, 45420

If you do receive Joe's auction, please try to bid on something. Joe will send you the next auction as long as you are an active bidder. If you do not bid, he will not send you the next auction.

Lynn Geyer's Advertising Auctions are offered once or twice a year. The main emphasis is on breweriana. Some openers and corkscrews are offered. For \$20.00 you receive a very nice auction catalog. Auction 18 just closed in July. Interested parties contact Lynn Geyer's Advertising Auctions, 300 Trail Ridge, Silver City, New Mexico, 88061 (505) 538-2341

Fink's Off The Wall Auctions. The main emphasis is on Beer Advertising Labels, but openers are available, the next auction closes in October. The cost is \$18.00. Contact Fink's Off The Wall Auctions, 108 E. 7th St., Lansdale, PA, 19446-2622 (215) 855-9732

Rocky Mountain Brewery Collectibles (RMBC) has an auction about 4 times a year. Some openers are available. Contact Dick Norman at RMBC, PO Box 242, Winter Park, CO, 80482-0242

OTHER CLUBS

American Breweriana Association (ABA) offers a newsletter six times a year on breweriana collecting and an annual convention. Dues are \$20.00 per year. Contact Chris Galloway, Executive Director, P.O. Box 11157, Pueblo, CO, 81001

Canadian Corkscrew Collectors Club (CCCC) offers a newsletter four times a year on corkscrew collecting and an annual convention. Dues are \$30.00 per year. Contact Milt Becker, P.O. Box 9863, Englewood, NJ, 07631

East Coast Breweriana Association (ECBA) offers a newsletter four times a year on breweriana collecting and an annual convention. Dues are \$20.00 per year. Contact John Stanley, 3712 Sunningdale Way, Durham, NC, 27707-5684, (919) 419-1546

Figural Bottle Opener Club (FBOC) offers a quarterly newsletter on three-dimensional and either free standing or wall-mounted openers and an annual convention. Dues are \$12.00 per year. A full color guide book is offered for \$28.00. Contact Donna Kitzmiller, 117 Basin Hill Rd., Duncannon, PA, 17020, (717) 834-4867

National Association Breweriana Advertising (NABA) offers a newsletter four times a year on breweriana collecting and an annual convention. Dues are \$20.00 per year. Contact Robert Jaeger, 2343 Met-To-Wee Lane, Wauwatosa, WI, 53226

(Please remember there is no charge for Ads)

WANTED

Corkscrews, Beer Advertising Letter Openers, Beer Advertising Knives, and Postcards depicting Corkscrews. Please send description, photo, sketch, photocopy, or tracing of what you have and advise price wanted.

Don Bull, 20 Fairway Drive, Stamford, CT, 06903, (203) 968-1925

A-9 Baseball Players (Beer or Non-Beer). Beer ones needed: **A-9-8 Eureka, A-9-21 Amber, A-9-26 Penn, A-9-29 Waldorf, A-9-30 Bethlehem, A-9-37 Butte, & A-9-38 Eagle.**

(Please note that John Stanley will trade out of his collection to help Ed get the openers listed)
Ed Kaye, 1478 Albatross Rd., Sanibel Island, FL, 33957, (813) 472-0004

Any of these types (must be beer): **A-14, A-19, A-43, A-46, A-47, A-49, A-51.**

Many good trades or buy straight out.

Marc Benjamin, 167 Nixon Beach RD, Edenton, NC, 27932, (919) 482-2099

O-5 Openers. Send for list. Top Dollar \$\$\$.

Steve Owen, 5409 Carmel Court, Tyler, TX, 75703

New York State Openers, all styles. Will buy or trade from my non N.Y. Openers.

Also send me your want lists, I might have what you need.

Mark Barren, 6141 Tachi Dr., Newfane, NY, 14108-9517

Kitchen Openers (such as F-11, F-12, & F-13). Would like one from each State

Bonnie Heathman, 4305 Cavalier St. NE, Cedar Rapids, IA, 52402

Northwest Openers (Washington, Oregon, Idaho, Montana).

I just began collecting openers and I'm looking for all types.

David Edgar, 12827 163rd SE, Renton, WA, 98509, (206) 227-8351

Lexington Brewery (Dixie Beer) and Coca-Cola Openers.

Want to buy any figurals or unusual older examples of these.

Also looking for old manufacturer's brochures or catalogs (originals or copies of).

Thom Thompson, 123 Shaw Ave., Versailles, KY, 40383, (606) 873-8787

B-28 Howell & King, B-37 Dubois, and F-16 Wacker. Cash or Trade.

Tony Zanghi, 2225 Deer Trail Rd., Coopersburg, PA, 18036, (610) 346-8232

"E" Type Openers. Would like to hear from anyone who has "E" type openers for sell or trade.

Ray Schmeisser, Rt. 3 Box 194 E, Caldwell, TX, 77826

West Virginia Openers (B-7-12, B-18-110, and H-4-3), also Southern US Beer openers and corkscrews. Roger Jarrell, 1500 Sedwick Rd., Durham, NC, 27713, (919) 544-7787

(Please remember there is no charge for Ads)

WANTED (Continued)

Southern US Beer Openers, Types, A-18, A-23, A-34, A-42, B-6, B-7, & B-31, and Harley-Davidson Motorcycle Opener, Nice trades available. Write for my latest trade/want list. John Stanley, 3712 Sunningdale Way, Durham, NC, 27707-5684, (919) 419-1546

New Jersey Openers only. I have an extensive WANT LIST. Also any **Breweriana from Paterson, NJ.** Pete Lundell, 35 Barbara Lane, Oakland, NJ, 07436, (201) 337-5767 after 6PM

M-3-23 F & S, M-3-33 Moose, and M-3-42 Seitz to complete Pennsylvania Collection. Harold Queen, 1001 Centre Ave., Jim Thorpe, PA, 18229, (717) 325-2612

Fishing Lures With Brewery Advertising. Older the better! Ollie Hibbeler, 298 Highline Road, Lake Ozark, MO, 65049

H-8-1, H-8-19, M-3 Slides, and any Openers or Items from the Enterprise Brewery of Fall River, MA (Brands: Old Tap Ale, Boh, King Phillip Ale, Clyde Cream Ale ???) Dave Dubrul, 500 Pine St. 1C, Burlington, VT, 05401, (802) 860-2976

Syroco Wood Knight. Will Buy or Trade for, also any O-5 Wallmounts (Beer or Non-Beer) Dale Deckert, 4087 Lake Conway Woods Blvd., Orlando, FL, 32812, (407) 859-1543

My A-11-1 Wooden Shoe (EX) for Harley-Davidson Bike and Goodyear Airplane Figurals Tony Zanghi, 2225 Deer Trail Rd., Coopersburg, PA, 18036, (610) 346-8232

Bar Mount K-2 Blatz, K-8, K-9 Ed Broders, 10220 Westwood, Baton Rouge, LA, 70809-3243

P-19-10 Kalispell, P-18-3 Washoe, P-31-6 Eureka, Purchase or Trade. Have P-19-2 Townsend, M-73 Highlander Sliders (Red & Blue), and many other P's for trade. Bill Pattie, 37050 SE 89th St., Snoqualmie, WA, 98065, (206) 888-2496

Trade M-73 Highlander (Red & Blue) for M-73 Kessler or M-73 Lorelei (any colors) Bill Pattie, 37050 SE 89th St., Snoqualmie, WA, 98065, (206) 888-2496

Cigar Box Openers, Any and All Styles. Will also trade duplicates. Also want other "smalls" with cigar advertising such as pocket cutters, pouches, tip trays, pins, mirrors, etc. Mike Schwimmer, 325 E. Blodgett Ave., Lake Bluff, IL, 60044-2112, (708) 295-1901

SELLING

1. Corkscrew Knife P-26-?-? "C.N. HUETHER BERLIN. ONT. / THE BERLIN LION BREWERY LIMITED" (Factory Scene). Embossed design with high relief, very little wear. Design details similar to P-69 but two knife blades. Both knife blades broken near base, cap lifter & corkscrew OK. Base of both blades marked "D. PERES SOLINGEN/(BARREL)". \$40 + Postage.

2. H-2-? "STONE'S GOLD CROWN" \$20 + Postage.

3. E-22-? "HAFFENREFFER & CO. BOYLSTON LAGER BEER" \$25 + Postage.

Carl Jantos, 7025 Kevin Dr., Bethel Park, PA, 15102

"Encyclopedia of Texas Breweries, Pre-Prohibition (1836-1918)" or "Beer Trucks, A Photographic Salute". These are nearly sold out.

Mike Hennech, P.O. Box 2270, Vashon, WA, 98070-2470

Bottle Opener Display Case: Inserted with this issue is a yellow slip offering Bottle Display Cases. The cases fit most "A" and "B" types. I will have samples at the convention in April. If any members have these cases, please let me know what you think about them. The cases are excellent for displaying and are stackable. The owner of the company Mike Pratt joined JFO. The Collectors Choice Display Case Co., Rt. 2 Box 73, Fremont, NE, 68025, (402) 721-4765

"Beer Advertising Openers" xeroxed for \$8.00 postpaid. A xerox copy of Don Bull's first opener book. John Stanley, 3712 Sunningdale Way, Durham, NC, 27707-5684, (919) 419-1546

"JFO Back Issues" xeroxed for \$40.00 postpaid. Xerox copies of all JFO back issues 1979-93 (60 issues). John Stanley, 3712 Sunningdale Way, Durham, NC, 27707-5684, (919) 419-1546

1994 Handbook of Beer Advertising Openers and Corkscrews, \$20.00 Postpaid (sent 4th class). This book combines the 1984 Handbook, 1985-89 Supplement, and the 1990 thru 1994 additions. The new handbook is in a 8 1/2 by 11 format, loose leaf, printed on 3-hole punch paper (you must provide your own 3-ring binder). There are 108 pages of pictures of all known types and 250 pages of additions. A corrections section is also listed for erroneous additions. John Stanley, 3712 Sunningdale Way, Durham, NC, 27707-5684, (919) 419-1546

NEXT ISSUE

1995 New Additions to the 1994 Handbook

Price Guide for Types 'K', 'L', 'M', 'N', 'O', and 'P'

1995 Convention Packet

Cleaning Openers Revisited

October 1994 Just For Openers Auction Closing November 17, 1994

NAME: _____

ADDRESS: _____

CITY: _____

STATE: _____ ZIP: _____

- 1) No Phone Bidding
- 2) Openers Sold to Highest Bidder
- 3) Identical Bids, Earliest Bid Wins
- 4) 7 Days to Return If Not Satisfied
- 5) Openers Shipped Upon Payment
- 6) Results Shown Next JFO Issue
- 7) Shipping and Handling Extra

Send Bids To: John Stanley 3712 Sunningdale Way Durham, NC 27707-5684
 JFO # & Description are from the 1994 Handbook Of Beer Advertising Openers and Corkscrews
Conditions (CS): F (Fair), G (Good), VG (Very Good), EX (Excellent), M (Mint)
(UL-Unlisted in 94 Handbook, XX-Non-Beer)

#	JFO #	Description	ST	CS	BID
01	A-04-013	DRINK AKRON BREWING COMPANY'S WHITE ROCK EXPORT	OH	VG	
02	A-04-044	"AUGUSTINER" COLUMBUS, OHIO.	OH	F	
03	A-06-001	COMPT'S WEST END BRG. CO. / UTICA-CLUB IT'S IN THE TASTE PILSENER WUERZBURGER-GINGER ALE	NY	VG	
04	A-07-025	COMPLIMENTS SOUTHERN BREWING CO. TAMPA	FL	G	
05	A-15-004	COOK'S EVANSVILLE, IND.	IN	EX	
06	A-15-UL	COMPLIMENTS OF THE EAGLE SUPPLY HOUSE 242 STATE STREET ROCHESTER, N.Y. (SEE B-13-77)	NY	EX	
07	A-21-010	ZIEGLER BEER BEAVER DAM, WIS.	WI	G	
08	A-28-019	THOMAS RYAN'S CONSUMER BREWING CO. SYRACUSE, N.Y. / PURE BEERS	NY	G	
09	A-32-001	ASK FOR WOODEN SHOE LAGER BEER	OH	VG	
10	B-01-022	THE PORTSMOUTH BREWING & ICE CO. CRYSTAL GOLD (PBI CO. LOGO) (20% PAINT)	OH	G	
11	B-02-004	FEIGENSPAN P.O.N. THE BEER THAT BUILDS (90% PAINT)	NJ	VG	
12	B-03-001	DRINK EDELWEISS BEER (FULL PAINT)	IL	EX	
13	B-14-008	BLUE STAR MALT EXTRACT / CENTRAL PRODUCTS CO. JACKSON, MICH.	MI	EX	
14	B-14-030	K & S. CO. PULL FOR KAMM'S BEER	IN	M	
15	B-14-036	OAKLAND / THE WESTS BEST BET	CA	M	
16	B-14-045	WASHINGTON PILSENER (PIC OF WASHINGTON)	OH	F	
17	B-14-129	HOMELIFE BEER HOLLISTER DIST. CO. ST. PAUL, MINN.	MN	M	
18	B-14-151	HABERLE CONGO SYRACUSE / SAME	NY	G	
19	B-18-005	BARTHOLOMAY ROCHESTER, N.Y. IN BOTTLES ONLY. RIENZI BEER / BARTHOLOMAY ROCHESTER, N.Y. IN BOTTLES ONLY. TAM O'SHANTER ALE	NY	G	
20	B-18-047	KEY TO MICHELS PERFECTION BEER LACROSSE, WIS.	WI	F	
21	B-18-055	RETURN THESE KEYS TO OLYMPIA BREWING CO. OLYMPIA, WASHINGTON AND RECEIVE REWARD / (NUMBER 2689)	WA	EX	
22	B-18-065	KEY TO RAINIER BEER	WA	G	
23	B-18-115	SCHLITZ IN BROWN BOTTLES / SCHLITZ PALE DRY GINGER ALE	WI	VG	
24	B-18-376	DRINK "THE R.I.B." FAMOUS ROCK ISLAND BEER	IL	EX	
25	B-18-517	NATIONAL SAGINAW, MICH. KEY TO THE BEST BEER	MI	F	

October 1994 Just For Openers Auction Closing November 17, 1994

26	B-19-006	DRINK CENTLIVRE'S NICKEL PLATE BEER FT. WAYNE	IN	VG	
27	B-19-017	KEY TO HAMM'S FAMOUS BEERS ST. PAUL / DIGESTO MALT TONIC	MN	M	
28	B-19-153	CALL FOR LEISY'S SPECIAL BREW	IL	VG	
29	B-19-202	DRINK ACME BEER FOR HEALTH		EX	
30	B-19-208	BLUE RIBBON PRODUCTS CO. MALT & HOPS / PHONE 3293 421 HAMILTON ST. ALLENTOWN, PA.	PA	VG	
31	B-19-216	PFAFF'S BEER	MA	VG	
32	B-19-XX	COCA-COLA IN BOTTLES / WHEN THIRSTY TRY A BOTTLE		G	
33	B-21-030	DRINK HORLACHER 9 MONTHS OLD PERFECTION BEER	PA	F	
34	B-21-055	CALL FOR MUTUAL BEER IN GOLDEN BOTTLES		VG	
35	B-21-112	INDEPENDENT BREWING CO. DETROIT. / FINE BEERS.	MI	G	
36	B-21-200	THE PROVIDENCE BREWING CO'S BOHEMIAN BEER NEW ENGLAND'S FINEST ABSOLUTELY PURE / CANADA MALT ALE	RI	VG	
37	B-21-246	KEY TO THE GERMAN BREW'G CO'S BEERS CUMBERLAND, MD.	MD	G	
38	B-21-318	BREWED & BOTTLED BY WILBER BREWERY CO. / SILITEL BEER THAT MADE OMAHA JEALOUS	NE	G	
39	B-21-345	HABERLE CONGRESS BEER SYRACUSE / SAME	NY	VG	
40	B-21-UL	CALL FOR ERIN BREW EHREN BRAU	OH	G	
41	B-21-XX	COMPLIMENTS OF A.W. STEPHENS MFG. CO. ORIGINATORS OF THIS BOTTLE OPENER	MA	G	
42	B-21-XX	RIVERSIDE BEVERAGE CO. G. & H. / GINGER ALE YOU CAN TASTE THE GINGER		G	
43	B-22-014	MINNEAPOLIS BREWING CO. GOLDEN GRAIN BELT BEERS	MN	EX	
44	B-23-005	CENTLIVRE BEER FT. WAYNE, IND. YOU PAY (SPINNER)	IN	VG	
45	B-23-UL	USE XXXX BELMONT MALT 40 FRONT ST. ROCHESTER, N.Y.	NY	G	
46	B-23-XX	DRINK OLD FASHION LAGER MEDICINE HAT BREWING CO. LTD. (CANADIAN)		EX	
47	B-24-035	WALTER BREWING CO. COLORADO & WISCONSIN / WALTER'S PILSENER BEER	CO WI	M	
48	B-24-036	D.G. YUENGLING & SON, INC. POTTSVILLE, PA. / DRINK YUENGLING'S FINE BEER	PA	M	
49	B-24-047	POINTER BREWING CO. CLINTON, IOWA POINTER BEER	IA	EX	
50	B-24-048	WAGNER BEER / ALWAYS ACCEPTED AS THE FINEST	IL	VG	
51	B-24-054	OLDTIMER BETTER BEER / SAME	IL	G	
52	B-24-055	POINTER BREWING CO. CLINTON, IOWA	IA	VG	
53	B-24-063	DICK'S BEER GENUINE (CHARACTER) PILSENER	IL	EX	
54	B-24-075	BECKER BREWING & MALTING COMPANY EVANSTON, WYOMING	WY	M	
55	B-29-XX	COCA-COLA IN BOTTLES / WHEN THIRSTY TRY A BOTTLE		VG	
56	B-30-002	CAPITOL BEER JEFFERSON CITY, MO.	MO	VG	
57	B-42-003	STORZ BREWING CO. OMAHA U.S.A. KEY TO STORZ OLD SAXON BRAU THE BEST BEER IN AMERICA / STORZ BREWING CO. OMAHA U.S.A. KEY TO STORZ TRIUMPH BEER THE DELICIOUS ARTESIAN BEER	NE	VG	
58	C-05-002	PABST BLUE RIBBON / THE BEER OF QUALITY	WI	G	
59	C-11-002	INDEPENDENT MILWAUKEE BREWERY PHONE MITCHELL 0880 / BILL'S BRAUMEISTER THE BREW WITH THAT OLD TIME FLAVOR	WI	M	
60	C-13-018	CREAM CITY BREWING CO. FAMOUS MILWAUKEE PILSENER TYPE BEER (BOTTLE) (YAJ)	WI	EX	

October 1994 Just For Openers Auction Closing November 17, 1994

61	C-13-037	FITZGERALD BROS. BREWING CO. TROY, N.Y. BURGOMASTER BEER (BOTTLE) (YAJ)	NY	EX	
62	C-13-079	ORTLIEB'S BEER (BOTTLE) (YAJ)	KY	EX	
63	C-13-111	SOUTH BETHLEHEM BREWING CO. SUPREME BEER	PA	EX	
64	C-13-135	GOENNER & CO. OLD MONARCH BEER	PA	G	
65	C-13-164	WYOMING LAGER & PORTER	PA	G	
66	C-13-194	THE STAR BEVERAGE CO. MINSTER, OHIO. WOODEN SHOE LAGER BEER (BOTTLE)	OH	G	
67	C-13-202	BUCKEYE BREWING CO. / GREEN SEAL BEER	OH	G	
68	C-13-UL	USE LYELL BRAND MALT ITS THE BEST		G	
69	C-19-006	INDEPENDENT MILWAUKEE BREWERY BRAUMEISTER SPECIAL PILSENER BEER (YAJ)	WI	G	
70	C-20-025	ELIZABETH BREWING CORPORATION AT ELIZABETH, N.J. / ELIZABETH BREW	NJ	G	
71	C-21-002	KAIER'S OLD DIAMOND ALE & PORTER FAMOUS AS ANTHRACITE / KAIER'S SPECIAL BEER FAMOUS AS ANTHRACITE (YAJ)	PA	EX	
72	C-21-007	GOLD BOND BEER	OH	EX	
73	D-03-013	SCHOENHOFEN / EDELWEISS	IL	VG	
74	E-01-032	JOLIET CITIZENS BREWING CO.	IL	G	
75	E-04-031	DOELGER'S MALT BREWS / SAME	NJ	G	
76	E-04-059	MCDERMOTT FOR TASTE / MCDERMOTT YARDS 7200 CHICAGO (YAJ)	IL	F	
77	E-04-062	MILLER HIGH LIFE BEER / UNIVERSITY CLUB (YAJ)	WI	VG	
78	E-04-144	SCHORR-KOLKSCHNEIDER BRWG. CO. ST. LOUIS, MO. / S- K LAGER BEER (YAJ)	MO	G	
79	E-04-176	KOERBER BRG. CO.	OH	G	
80	E-06-019	EAGLE BREWING CO. CATASAUQUA, PA. / SAME	PA	VG	
81	E-06-055	THE VICTOR BREWING CO. JEANNETTE, PA. / SAME	PA	G	
82	E-08-015	CLEVELAND & SANDUSKY BREWING CO. / GOLD BOND BEER CLEVELAND, O.	OH	G	
83	E-09-028	PUT EASTSIDE INSIDE IT'S FRANKERIZED / SAME	CA	G	
84	E-14-007	ALTES LAGER / THE ONLY EASTERN BEER MADE IN THE WEST		EX	
85	E-14-009	AMERICAN BREWERY, INC. BALTIMORE, MD. / AMERICAN BEER AMERICAN ALE	MD	VG	
86	E-14-014	BAVARIAN BEER-ALE-PORTER	KY	EX	
87	E-14-056	DALLAS-FORT WORTH BREWING CO. / ASK FIRST FOR BLUEBONNET BEER	TX	M	
88	E-14-071	EDELWEISS BEER / A CASE OF GOOD JUDGMENT	IL	EX	
89	E-14-091	ERNST FLECKENSTEIN BREWING CO. / FARIBAULT, MINN.	MN	EX	
90	E-14-159	JUNG BEER RANDOM LAKE, WIS. / SAME	WI	EX	
91	E-14-160	KAIER BREWING CO. / MAHANAY CITY PENNA.	PA	EX	
92	E-14-253	ADAM SCHEIDT BREWING CO. / VALLEY FORGE BEER	PA	VG	
93	E-14-292	VERNON BREWING CO. LOS ANGELES, CALIF. / GOLDEN CREME BEER GOLDEN CREME ALE	CA	VG	
94	E-14-295	WALTER BREWING CO. EAU CLAIRE, WIS.	WI	EX	
95	E-14-305	DRINK WOODEN SHOE BEER / SAME	OH	G	
96	E-14-328	BOSCH BREWING CO. HOUGHTON, MICH. / SAME	MI	EX	
97	E-14-420	PEOPLE'S BREWING CO. DULUTH, MINN. / PEOPLE'S CHOICE BEER	MN	VG	
98	E-14-444	STAR UNION BREWERY STAR MODEL BEER / SAME	IL	VG	

October 1994 Just For Openers Auction Closing November 17, 1994

99	E-14-456	DRINK WAUSAU BREWING CO. BEER / SAME	WI	G	
100	E-14-476	BOSCH BREWING CO. HOUGHTON, MICHIGAN "NOT FOR SALE" / BOSCH BEER BOSCH BEER	MI	VG	
101	E-14-642	STAR UNION BREWERY "STAR MODEL BEER" / SAME	IL	VG	
102	E-14-663	OLD HILL-TOP BREW OLD HILL-TOP BREW / SAME	MI	VG	
103	E-15-002	PETER HAND BREWERY CO. / MEISTER BRAU "THE BEER"	IL	EX	
104	F-02-003	ESSLINGER'S - BEER - ALE	PA	EX	
105	F-02-004	FREDERICK'S BREWING CO. THORNTON, ILL. / VAN NESTOR BEER	IL	EX	
106	F-02-005	A. MIRABILE-BEER-ALE		EX	
107	F-02-009	SOUTH BETHLEHEM BREWING CO. BETHLEHEM, PA. / SUPREME BEER	PA	M	
108	F-02-012	"CRYSTAL ROCK" PALE DRY / SAME	PA	EX	
109	F-02-034	RAINIER (IN BOWL) RAINIER OLD GERMAN LAGER / RAINIER LIME RICKEY	WA	VG	
110	F-07-003	PETER BUB BREWERY INC. WINONA, MINN. SAY BUB'S BEER TIME HONORED FOR OVER 90 YEARS	MN	G	
111	G-01-016	LATROBE BREWING CO. LATROBE, PA. LATROBE BEER (BOTTLE)	PA	G	
112	G-01-033	KINGS BEER (BOTTLE)	NY	G	
113	G-01-UL	GREENWAY'S ALE	NY	VG	
114	G-02-001	BOSTON BEER CO. AMERICA'S OLDEST BREWERY 1828 / BOSTON ALE--BEER THE BEST FOR OVER 100 YEARS	MA	EX	
115	G-02-006	PENNSYLVANIA DUTCH OLD GERMAN BEER	PA	EX	
116	G-04-001	BAY CITY BEVERAGE CO.	MI	EX	
117	G-05-UL	BAY CITY BEVERAGE CO.	MI	G	
118	H-02-001	AMERICAN BREWING CO. ROCHESTER, N.Y. LIBERTY BEER	NY	VG	
119	H-02-UL	"USE EAGLE'S 120 MALT" BOTTLER'S SUPPLIES 242 STATE STREET, ROCHESTER, N.Y.	NY	G	
120	H-02-UL	USE EAGLE 120 MALT EAGLE SUPPLY HOUSE, ROCHESTER, N.Y.	NY	G	
121	H-02-UL	MFG. BY THE OSHKOSH BREWING CO. OF WIS. CHIEF OSHKOSH BEER "B'GOSH IT'S GOOD"	WI	VG	
122	H-05-011	FLOCK BREWING CO. / IT STANDS ON TOP	PA	G	
123	I-15-002	BALLANTINE ALE-BEER (3 RINGS) / SAME	NJ	EX	
124	M-03-012	THE GERMAN BREWING CO. / CUMBERLAND, MD. / THE ORIGINAL OLD GERMAN BEER (RED) (OTT)	MD	VG	
125	M-03-013	PHILADELPHIA BREWING CO. / OLD STOCK BROWN GLOW / PHILADELPHIA BREWING CO. (RED)	PA	VG	
126	M-03-016	BARBEY'S INC. READING, PA. ESTABLISHED 1861 / SUNSHINE BEER ALES PORTER / HAVE SUNSHINE IN YOUR HOME HEALTHFUL AS SUNSHINE (YELLOW) (REG)	PA	EX	
127	M-03-016	BARBEY'S INC. READING, PA. ESTABLISHED 1861 / SUNSHINE BEER ALES PORTER / HAVE SUNSHINE IN YOUR HOME HEALTHFUL AS SUNSHINE (YELLOW) (OTT)	PA	EX	
128	M-03-XX	1933 CHICAGO / A CENTURY OF PROGRESS / A CENTURY OF PROGRESS	IL	EX	
129	M-04-001	BLATZ MILWAUKEE (PRINT) (YAJ)	WI	G	
130	N-02-001	DRINK DIXIE BEER (YAJ)	LA	F	
131	N-03-003	ALPS BRAU BEER		M	
132	N-11-002	STONE'S "AMERICA'S BEST" BEER	PA	VG	
133	P-51-UL	THE CUMBERLAND BREWING COMPANY. CUMBERLAND, MD. / SAME	MD	G	