

JUST FOR OPENERS

PO Box 64 Chapel Hill, NC 27514-0064 (919) 419-1546
Past Editors Don Bull (1979-83) Ed Kaye (1984-1988) Art Santen (1989-1993)

Membership Renewals / Annual Dues \$20.00

If the label on your Newsletter Mailing Envelope has an Expiration Date of 12/31/97, please pay your dues now. A membership renewal card should be enclosed. Other members please verify the expiration date shown on your mailing label. If you do not agree with the date please notify me.

1998 Convention San Francisco, CA (20th JFO Convention) (April 22nd to 26th 1998)

The 1998 Convention is set for April 22-26 at the Hotel Californian in San Francisco. The contract has been signed. The room rate for the Hotel Californian is \$80 (a 14% tax will be added to that). Convention host is John Cartwright (see registration to be sent to him enclosed).

You Can Register at the Hotel by Calling 1-800-227-3346

1999 Convention Naples, FL (21th JFO Convention), CA (April 21st to 25th 1999)

Bob McNary is all set to host the 21st JFO Convention in Naples, Florida. This will be our second convention in this southern Florida area (1986 Convention hosted by Ed Kaye was in Ft Myers). Bob is working on a week long vacation special for JFO members.

Bob McNary still has some Buffalo Convention T-Shirts. Originally selling for \$10.00 you can now get one for \$5.00. Contact Bob at: 14 Apple Tree Ln, Naples, FL 34112.

Soda Handbook Due Out By March 1st

Presently I am laying out the new Soda Handbook and have gathered most of the listings and pictures. If anticipated overtime at work is minimal I hope to have the soda handbook ready by March 1st.

Member's Update

Tom Gormally had the same operation as Ollie Hibbeler and has almost fully recovered.

Kieler John Hoffman was born August 13th, weighing 9 lbs. 8 oz., 21 3/4" long to David and Jami Hoffman. Those attending the convention in Buffalo (4 months earlier) well remember that it appeared Jami was due any minute. Many of us have been concerned about her and are very glad to hear that mother and baby are both fine. John and I received a picture and he is adorable. He has big hands to carry lots of openers!!!

ECBA Convention Lancaster, PA (July 15 th to July 20 th)

It always takes Pat longer to get ready than she plans on. Instead of leaving at 7:30 Tuesday morning, it was 8:20 when we left Durham for Lancaster, PA. We had little Corkie along and the trip up was not too exciting especially since we passed by all of the antique malls. It was just too hot to leave Corkie in the truck by herself. We made pretty good time and arrived at the Eden Resort in Lancaster at 3:30. I had just enough time to unload the important bags (Pat's Mary Kay products) before catching a 4:00 bus to see Joe Prosser's bottle collection in Glen Arm, MD.

ECBA has started a tradition of a local member having convention attendees over to their house to see their collection. Last year Ken Ostrow did the honors in Boston and this year Joe Prosser had everyone over to see his worldwide collection of more than 10,000 bottles. He started collecting in 1946 and pretty much had his basement full from floor to ceiling. The bus trip to Joe's took a little over an hour. Ken Ostrow was also on the bus and told me he had just picked up an A-60-1 Narragansett Indian (shown on the first page). He had gotten it the weekend before at Brimfield with several other nice openers (A-26 Empire and an A-9 Leisy). It wasn't cheap but I was glad to pay the \$150 asking price. The really amazing thing about Joe Prosser's place was the mile long miniature railroad system he had set up on his property. I did take a ride on the full circuit. The engine pulled two cars that could hold 12 people each. It was 10:00 when we arrived back at the hotel. I finished unloading the heavy stuff (openers). Since Pat had not gone to Joe Prosser's, she stayed back and went shopping. She also matched my \$150 opener purchase by buying a concrete angel statue for the front porch. She actually did not commit until Friday but as happy as she was talking about it I knew she would end up buying it. Since this was Tuesday night no rooms were open and we turned in at 11:00.

Wednesday would be the first big day of room-to-room trading. ECBA always has convention activities planned such as tours and rooms opened up sporadically. Norm and Judy had their room open by lunch. Norm and I got down to some trading. I had a K-13 Schlitz that he ended up with and I got an A-15 Buffalo Bellweiser and some other miscellaneous openers as we completed the trade pretty fast. Larry Moter arrived mid-afternoon as he had antiqued his way up through Virginia and Maryland. His best find opener wise was a P-124-1 Horlacher in nice shape. He was sharing a room with another JFO member Chuck King. Finally late in the afternoon I walked into a room and bought 12 openers, the best being an A-4-UL Schlitz. Ben and Cornelia Hoffman arrived late in the afternoon and I sold Ben a few openers and he sold me some. The two I got were a B-19-130 Mt. Penn and an E-16 Deppen. We went into one room and the guy was holding Ben a couple of good openers. Ben bought a nice B-7 Cresson Springs and a B-1 Jenner Springs. I bought an E-4-106 Chester which I ended up trading to Larry Moter that night. That evening I did find an A-17 Barmann and a P-53-UL F&S but nothing else.

Thursday saw more rooms open but I didn't find any good openers. Pat went shopping again and at 3:30 in the afternoon we left to visit Todd, Linda, Hale and Hazel Milano in nearby Camp Hill. It took about an hour to get to their house. Todd and Linda are parents of JFO member Hale. Of course Todd is the main man behind the "I-7" craze. We first got to see Hale's swimming awards before I visited the basement where Todd has his "I-7"s displayed. Todd has a 2x4 that runs the length of one wall and is mounted about one foot from the ceiling. About 100 nails span the width of the board holding his beer and non-beer openers. The "I-7"s are displayed alphabetically and above each one is nailed a brass tag.

ECBA Convention Lancaster, PA (July 15th to July 20th) (Continued)

The brass tags were probably check out tags at one time but Todd has used them to display the corresponding JFO number for each "I-7". The tags have numbers up to five digits but Todd just uses the last 2 to match the JFO number. He keeps up to 2 "I-7"s displayed for each number on the front and any other duplicates are nailed to the back of the 2x4. A great way to display his collection and of course he has very few holes to fill.

Todd has also amassed a nice selection of general beer and soda openers. He has mainly concentrated on types. While I was checking out the collection Linda had been busy preparing an excellent supper. We took a break from checking out the openers to eat and afterwards Todd showed me another area of breweriana he is trying to get information and artifacts on. Linda's great-grandfather was Leo Ebert and he owned the Leo Ebert Brewing Company of Ironton, Ohio. Todd has a few bottles and a B-22 opener from Leo Ebert but would like any information or other breweriana that he could get. He has a really nice scrapbook on the Leo Ebert family.

Of course when you are having a good time, it really flies by. It was close to 9:00 when we left the Milano's. Corkie had come along and she was really worn out by now. She didn't know what to think of Hale and Hazel and they were a little afraid of the 10 pound wonder even with her sweet little face. When we got back to the hotel I found out the only good opener I missed was an E-4 Milwaukee Coca-Cola Bottling Co found by Larry Moter. Several rooms were open but not much in the way of good openers. The main topic of conversation was the fact that the York Bottle Show started the next day and several folks were going to get there early. In fact some were getting up at 3:00 to go 25 miles to the show. Of course they would be checking dealers out with flashlights. Norm Jay wanted me to go with him at 5:00 and I decided to sleep in.

Friday was the Amish Tour day for ECBA. At first I was going with Pat but decided to give my seat up since I was just going for the big Amish meal at lunch. I was afraid I might miss some opener action at the hotel. Pat could then sit with Judy Jay and I could cool it back at the hotel since this would be the third straight day of 100 degree heat. I had an ECBA officers meeting that morning and afterwards I did some trading with Harold Queen. Later I checked out some open rooms and ran into Norm Jay who had returned from the York Bottle Show. He had found an I-7 New England opener but nothing else opener wise. Just after Norm's return Larry Moter showed up he had turned up 2 good openers even though he waited until 10:00 to go to York. Larry found an E-21-1 Moul's and a B-21-UL Moul's. Apparently the price was too high for the general breweriana guys who had gone to York including Mr. Jay.

By late afternoon it was time to get ready for the Friday night banquet. I made one last check of rooms and thought I had been in all of the ones that were open. At the banquet Harold Queen shows me a B-7 Moose opener he had just gotten. The room had just opened a short time before and when I looked in the lady sitting there looked like one whose room I had already been in. My mistake and Harold was the benefactor. The B-7 Moose was near mint and is the only known Moose Brewing Company advertising with the town listed as Lucyville, PA instead of the present name of Roscoe, PA. The name changed about 1907 and the B-7 was patented in 1905, so you can figure it out. After dinner just about everyone's room was open but I had seen everything and decided to turn in early. Finally a nice cold front passed through that evening. Corkie was happiest about that as she is not fond of warm weather.

ECBA Convention Lancaster, PA (July 15th to July 20th) (Continued)

Saturday morning called for the group breakfast for ECBA followed by an officer's report. It was over by 9:30 and everyone starts setting up for the show open to the public. Carl Jantos and his wife Ruth had a table and I finally met him after dealing through the mail for several years. Two large ballrooms were required to hold all of the tables for the show. Only a few new openers turned up, nothing real good. David Hoffman was there early and after I left Paul Wagner stopped by. By 11:00 Pat and I had loaded the truck up and were ready to head home. We said our good-byes and another successful convention had concluded.

We headed south to Washington, D.C. and arrived there at 2:00 stopping at the home of Fred Mosrie. Fred has a really nice of Coca-Cola including several nice openers. We could only stay a short time but Fred gave the collection tour in 30 minutes and there was a lot to see. I spent about 15 minutes photographing his Coca-Cola openers. Fred has been collecting Coca-Cola memorabilia about 10 years and has amassed a really fine collection especially in small items. He has over 100 different Coca-Cola openers. Within 45 minutes we were back on the road and by 7:30 arrived back in Durham. I spent most of the day Sunday cleaning openers while Pat and Corkie were just glad to be home.

1998 ECBA Convention Rochester, New York (July 15th thru 19th)

I-19 & I-20 Quad-Fold Advertising Card (from the collection of John Stanley) (Left)
F-43 "The Skirt" Picked Up by John Stanley at the NABA Convention (Right)



NABA Convention Minneapolis, MN (July 30th to August 3rd)

Pat had me up early Wednesday morning to catch my 8:00 flight to Minneapolis. Of course once we got to the airport the plane was 45 minutes late in departing. I passed the time by checking my opener inventory and the flight was a safe easy one as I landed in Minneapolis at 11:15 CST. After a 5 minute shuttle ride I officially arrived at the NABA Convention being held at the Airport Marriot. For this show I was rooming with Larry Moter (Mr "E"). Larry had been in the Minneapolis area since the previous Saturday checking out antique malls and brew pubs.

A few rooms were open as I spent the afternoon going room-to-room. The best opener I bought was a B-19-UL Ulmer Lager from New Ulm, MN. One thing I quickly learned was that Minnesota Openers and just about any Minnesota Breweriana was not cheap. I picked up a few more "A"s and "B"s nothing great and Larry and I did a little trading. Later that evening I bought a few openers from former JFO member Larry Jaehnert. They included a P-15-UL Budweiser and an A-39 7Up. Don Whelan and I got down to some serious trading as he had brought quite a few openers from his collection to sell and trade. Don had decided to concentrate on Schlitz, Types and Missouri openers and corkscrews. I traded him an A-41 Medford Dog, a B-16-2 Haberle, an A-4-UL Schlitz, a B-18-UL Schlitz and an A-14-1 Rainier. I received a M-73 Chicago 1934, a P-1-13 Leopold, a N-29 Dr Pepper, a F-2-36 Mitchell, a B-13-UL Hoster and an A-1-22 Fresno and I drew a little money.

I finally went to bed about 11:00 and found out the next morning that the really hot breweriana dealing occurred right next door to Larry and me. It was described as a "madhouse" as our neighbor had brought 80 pre-pro mugs to sell and decided to open up at midnight. JFO member John Bitterman and another friend were first in and then they went and told their fellow Chicago collectors including Norm Jay. The only problem was they forgot where the room was. Norm finally found it just ahead of some other collectors and got an Acme Brewing Co (GA) mug and an Anaconda Brewing Company mug. He was a very happy camper the next day especially since he was offered a sizable profit for the Anaconda mug.

Thursday is usually the biggest day for NABA room-to-room and a lot of new rooms did open up. A couple of brewery tours were scheduled but new rooms opened up pretty much all day. We could have had a JFO mini convention with all of the members that were in attendance. Besides myself and Larry Moter, we had Norm Jay, Don Whelan, Verne Vollrath, Harold Queen, John Bitterman, Herb Haydock, Stan Summers, Larry Sherk, Phil Mandzuk, Vic Kroll, Henry Smith, Ken Ostrow and last but not least Fil Graf the NABA Convention Host for 1997. Phil Mandzuk gave me a picture of a Stanley Water Wagon from Stanley, Quebec, a welcomed addition to the Stanley collection. For once I even took an afternoon nap.

I found several decent openers that day and that afternoon things picked up when I got several openers from Don Ray a Nebraska dealer. Don started a rumor that Norm Jay had paid him \$50 for an E-14-481 Crete, Nebraska opener. Larry and I both about had heart attacks. I kept telling Don Ray he was mistaken, that Norm had never paid \$50 for an opener in his life. Norm played along for a day and said that definitely did not pay \$50. He and Don Ray had done some trading and maybe Don figured it that way but he sure didn't. That afternoon Norm did get a nice P-63-1 Gerst which he traded to Don Whelan. Don Whelan also picked up a nice A-26 Empire which also came from Ken Ostrow. For supper Larry, Ken and I went to the Gluek Restaurant in downtown Minneapolis. A nice meal and some good beer were served. We were back in time for room-to-room trading since the evening bus tour would be over at 8:00.

NABA Convention Minneapolis, MN (July 30th to August 3rd) (Continued)

Larry got the best opener that night, an E-4 Coca-Cola from Dubuque. I did buy an A-23 Coca-Cola and the new discovery D-Star Beer from the same couple. We kept our room open until 12:00 as Larry was having some success selling breweriana he had brought.

Friday is the day of the big NABA auction. Members can put in up to 5 items in the auction from 8 to 10 AM. Previewing is from 10 to 11 and the auction runs from 11 to 4. No openers were entered as the minimum starting bid is \$50. I watched some of the early action and the highlight was a Schmidt sign that Norm Jay was hoping would bring \$300 and it brought a \$1000. Norm practically danced around the room when sold was announced. Larry, Don Whelan and I decided to go into St Paul for lunch and hit some antique shops. The place we ended up at was called O'Gara's an Irish bar that had been owned by the same family since 1941. The food was pretty good and we did take in a couple of antique shops and one mall. All we found were overpriced common openers, certainly no hidden treasures. We arrived back at the hotel by 3:00 and by 4:00 rooms were opening up as the auction wound down. By now I was pretty sure I had checked all of the rooms but Harold Queen wanted to know if I had seen the L-1 Pepsi opener in a certain room. Well it was in the couples room who had the Coca-Cola openers and I had missed it. It works like any L-1 but the case is plastic. It was in mint condition and since I really like Pepsi openers I paid the \$45 asking price. It was my lone purchase of the evening. That night Larry and I haggled over the E-4 Coca-Cola opener he had found. I finally ended up giving him two tough beer wires for it (an E-4 Crockery City and an E-14 Tennessee). The NABA banquet that night was very good except for a long-winded guest speaker and I ended up falling asleep near midnight while Larry was talking breweriana with a customer.

Saturday's public show set-up began at 7:30. A large banquet room and an outdoor tent were being used. The tent had bigger tables but with heat and humidity that day it was not exactly a great place to be dealing. Former JFO member Ted Striny set-up in the tent and we talked a good while about the old-time members. He spoke quiet fondly of the good times that he had had at JFO conventions. JFO member Scott Williams drove up from Iowa and stayed a couple of hours. I bought some soda openers from Phil Mandzuk that I had passed on at last year's convention and my last 2 purchases were a B-7 Schmidt and a F-43 "Skirt" cast iron opener from Larry Jaehnert. I did trade a B-1 Welz & Zerweck to Verne Vollrath for a nice B-27 Miller. Later after the show I actually did some trading with Norm Jay. He had a nice B-2 from Aldrich, the company that made B-2s and some B-27s. I had to give him a good E-4 and an E-14 but I was happy.

Larry had headed back to Virginia at noon. I stayed over Saturday night to get the cheaper air fare. That evening we had another group banquet and after a short walk to check out the "Mall of America", I turned in early. Sunday morning was the NABA business breakfast and after saying good-byes, I had to kill a couple of hours in my room. My plane left Minneapolis at 1:00 and I was back in Durham at 4:30. It sure felt good when that plane touched down. Pat and Corkie picked me up in the big red truck. This was my last beer show for 1997.

A special thanks to Fil Graf for a great NABA Convention.

1998 NABA Convention Columbus, Ohio (August 5th thru 9th)

1997 New Discoveries

A-58
BOTTLE

JUST FOR OPENERS 1997 CONVENTION AMHERST, NY
(2ND CONVENTION OPENER) (SHOWN
BOTTOM RIGHT OF THIS PAGE)

A-61
DONKEY
3"

JOHN STANLEY

1998 (1)

1. JAX BEER JACKSON, FLA.

A-62
RACE CAR
MARKED "COOL PRODUCTS"
6 1/4"
ART SANTEN

1998 (1)

1. BUDWEISER

C-50
CAP LIFTER
2 3/4"
BOB MCNARY

1998 (1)

1. RED DOG (PIC OF DOG) / SAME

D-23
CAP LIFTER
4 1/2"
JOHN STANLEY

1998 (1)

1. STAR BEER / ENJOY LIFE

G-46
CAP LIFTER/POP TOPPER
(SEE G-28)
2 7/8"
ART SANTEN

1998 (1)

1. SHARP'S

G-47
CAP LIFTER/BOTTLED SHAPED
PLASTIC COVERED METAL
6 3/8"
JOHN BITTERMAN

1998 (1)

1. FLATLANDER'S (IN BANNER) BE KIND TELL
THE TRUTH DRINK GOOD BEER 847-
821-1234

G-48
CAP LIFTER/TAB LIFTER
(LIKE G-28 BUT INCLUDES TAB LIFTER)
2 5/8"
DON WHELAN

1998 (1)

1. LITE LITE LITE (WHITE ON BLUE)

G-49
CAP LIFTER/RED ENAMELLED BRASS
3 13/16"
DON WHELAN

1998 (1)

1. BUDWEISER CLASSIC AMERICAN LAGER
(EAGLE IN A)

L-11
WOOD BOTTLE AND WIRE (3 FRETS) CAP LIFTER
6 1/8"
ART SANTEN

1998 (1)

1. BUDWEISER KING OF BEERS GENUINE
(EAGLE IN A) AB GENUINE (EAGLE IN
A) BREWED BY OUR ORIGINAL ALL
NATURAL PROCESS USING THE
CHOICEST HOPS RICE AND BEST
BARLEY MALT ANHEUSER-BUSCH INC.
ST. LOUIS, MO.

M-110
LEATHERMAN POCKET SURVIVAL TOOL
CAN-BOTTLE OPENER/FILE/PHILLIPS SCREWDRIVER/
SMALL SCREWDRIVER/PLIERS/NEEDLENOSE PLIERS/
WIRE CUTTERS/KNIFE/NAIL NICK/AWL/
MEDIUM SCREWDRIVER/LARGE SCREWDRIVER
MARKED "LEATHERMAN TOOL PORTLAND OR"

4" FOLDED

DON WHELAN/ART SANTEN

1998 (1)

1. BUDWEISER (YELLOW ON CHROME)

M-111
OPENER/CORKSCREW/KNIFE BLADE/
PLASTIC HANDLES
3 3/4"
ART SANTEN/DON WHELAN

1998 (1)

1. COORS (GOLD ON RED)

M-112
CAP LIFTER
PLASTIC ON STEEL
3"
ARTHUR HANSON

1998 (1)

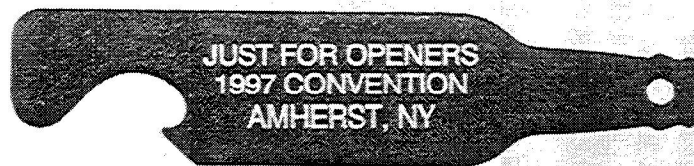
1. BUSCH BAVARIAN BEER (EAGLE IN A)

N-88
OPENER/RECTANGULAR HANDLE
(SEE N-2)
4 3/4"

LEW BURRITT/ED BRODERS/OLLIE HIBBELER

1998 (1)

1. DRINK DIXIE BEER



1997 New Discoveries (Continued)

N-89

SWISS ARMY KNIFE
TWO OPENER BLADES/TWO KNIFE BLADES
MARKED "OFFICIER SUISSE" ON KNIFE BLADE
3 1/4"
MARC BENJAMIN/ART SANTEN

1998 (1)

1. STROH'S / (SWISS LOGO) (GOLD ON BLUE)

N-90

SWISS ARMY KNIFE
OPENER-SCREWDRIVER BLADE/KNIFE BLADE/
FILE KNIFE BLADE/TOOTHPICK & TWEEZERS
2 1/4"
ART JOHNSON/BOB MCNARY

1998 (1-2)

1. NOR'WESTER BREWERY (IN LOGO)
NOR'WESTER PORTLAND, OREGON 1-
800-472-BREW / (SWISS LOGO) (BLUE
ON WHITE)
2. RED (PIC OF DOG) DOG / (SWISS LOGO)
(RED AND WHITE ON BLACK)

N-91

CAP LIFTER/ICE SCOOP/SHOVEL SHAPED
MARKED "JAPAN"
7 1/8"
DON WHELAN

1998 (1)

1. SCHLITZ

O-19

3 SCREWS MOUNTS BELOW OPENER
3 3/8"
RICHARD ALONSO/NORM JAY

1998 (1-2)

1. ASK FOR BARTELS BEVERAGES
2. THE SILBERT BEVERAGE COMPANY (SILBERT
BREWING PROHIBITION CO)

P-134

WOOD HANDLE
TUBULAR SHAFT OVERLAYS METAL SHAFT
TO HOLD BELL IN POSITION (NO COTTER PIN)
(SEE P-8 & P-55)
MADE BY WILLIAMSON
DON WHELAN

1998 (1)

1. FRED MILLER BREWING CO. MILWAUKEE. /
SAME

Q-52

TWIST OFF CAP REMOVER/TOP POPPER FOR CANS
PLASTIC
MARKED "E-Z 3-WAY OPENER"
PAT.NO.D316,362 PAT.NO. 4,723,465
CANADIAN PATENT NO. 1,260,207"
4 3/4"
DON WHELAN

1998 (1-2)

1. BUD LIGHT. CAN & BOTTLE OPENER TWIST
(PIC OF BOTTLE CAP) OFF (PIC OF
TAB) LIFT OR POP (PIC OF PLASTIC
BOTTLE CAP) PLASTIC TOPS (BLUE ON
WHITE)
2. BUDWEISER KING OF BEERS. CAN & BOTTLE
OPENER TWIST (PIC OF BOTTLE CAP)
OFF (PIC OF TAB) LIFT OR POP (PIC
OF PLASTIC BOTTLE CAP) PLASTIC
TOPS (WHITE ON RED)

Q-53

TWIST-OFF CAP REMOVER/LARGE PLASTIC CAP
(SEE Q-3, Q-11 & Q-21)
MARKED "CAP 2 CAP WORLDWIDE PATENTED
L.A. CA U.S.A. SLIDE BOTTLE CAP IN EASY
OPENER HERE (TWICE) PRESS DOWN
TO OPEN (PIC OF HAND & BOTTLE)"
2 3/4"
ART SANTEN

1998 (1-5)

1. BUD ICE (RED & WHITE ON GREY)
2. BUD LIGHT BEER (BLUE, RED & WHITE ON
GREY)
3. BUDWEISER KING OF BEERS (BLACK, RED &
WHITE ON GREY)
4. O'DOUL'S NON-ALCOHOLIC BEER (GREEN &
RED ON GOLD)
5. RED WOLF (PIC OF WOLF) (RED & WHITE
ON BLACK)

R-18

COPPER KETTLE/CAP LIFTER IN BOTTOM
MADE IN GERMANY
1 7/8"
HAROLD QUEEN

1998 (1)

1. FRANCONIA BREWING CO. "FOR THE
PURIST"

X-9

CAP LIFTER/B-18 STYLE WITH NO KEY HOLES
MARKED "CYMBA, INC. U.S.A."
3"
MARK BARREN

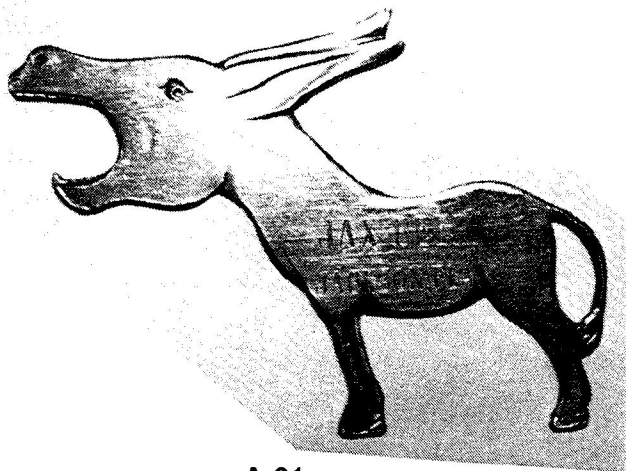
1998 (1)

1. JFO JUST FOR OPENERS 1997 CONVENTION
AMHERST, NY KEY TO

A-60 Reverse Side (Front on Page 1)



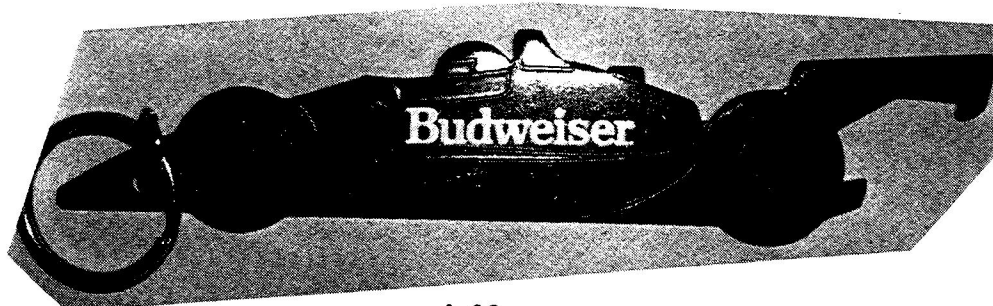
1997 New Discoveries (Continued)



A-61

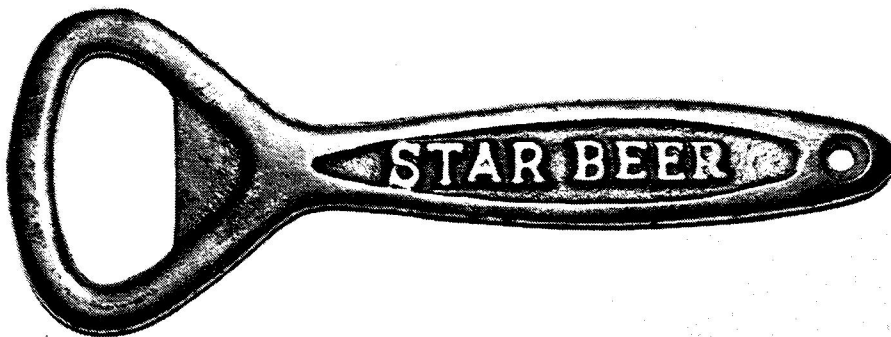


C-50

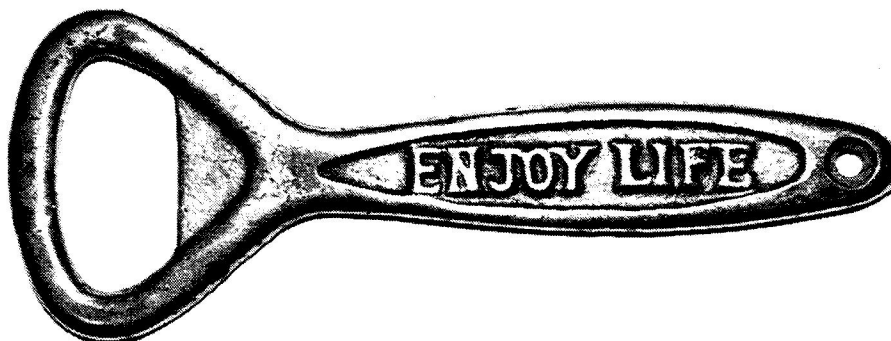


A-62

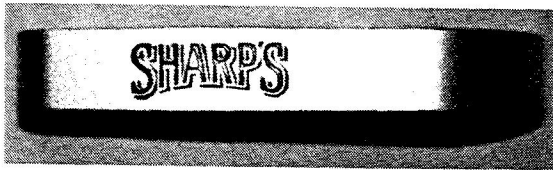
D-23 Front



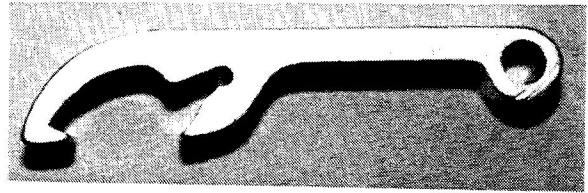
D-23 Back



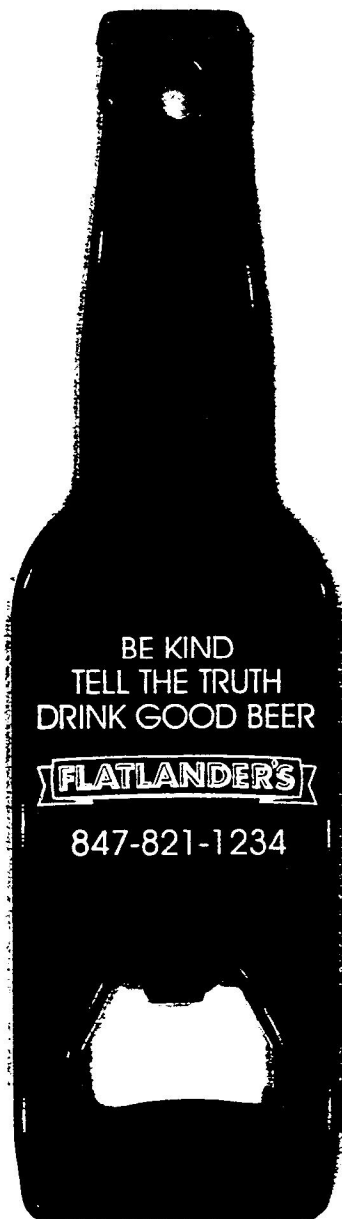
1997 New Discoveries (Continued)



G-46 Top



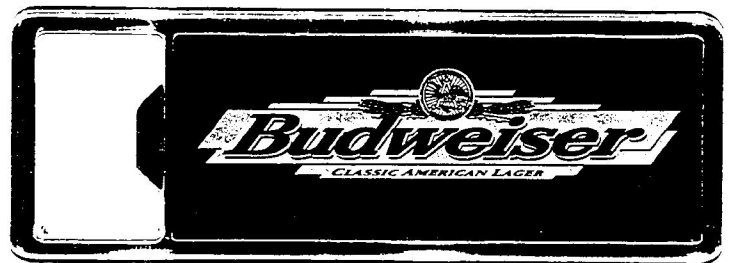
G-46 Side



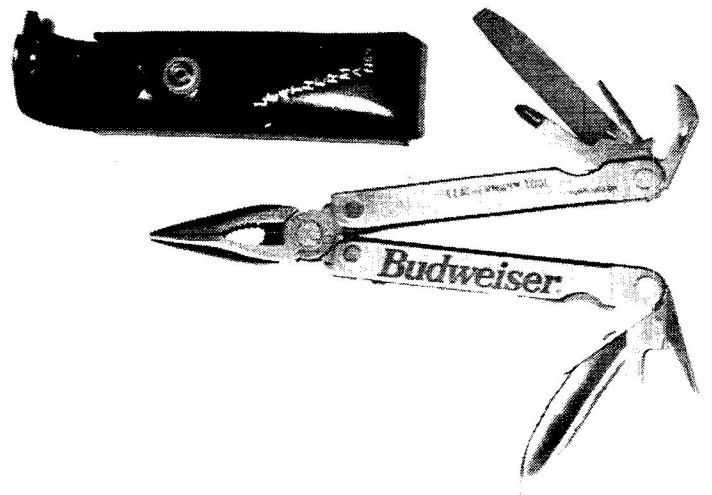
G-47



G-48

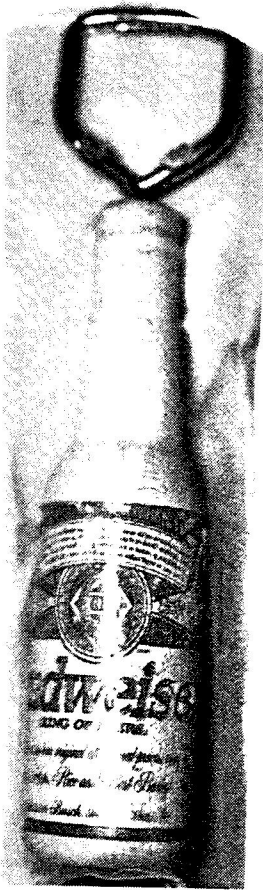


G-49

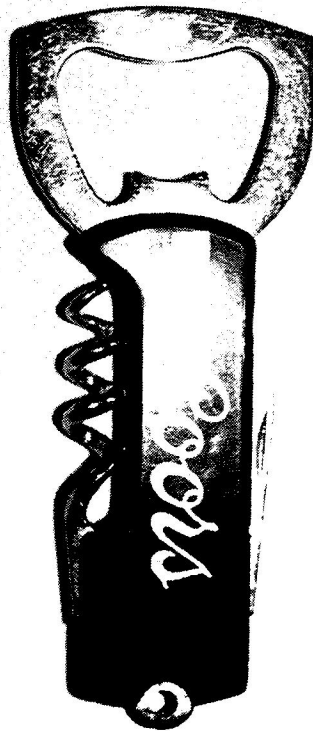


M-110

1997 New Discoveries (Continued)



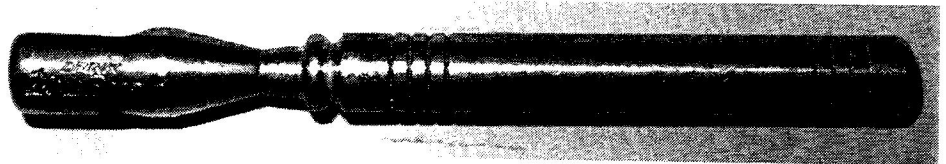
L-11



M-111



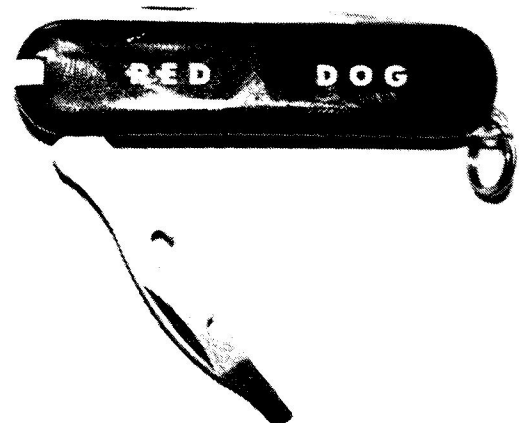
M-112



N-88

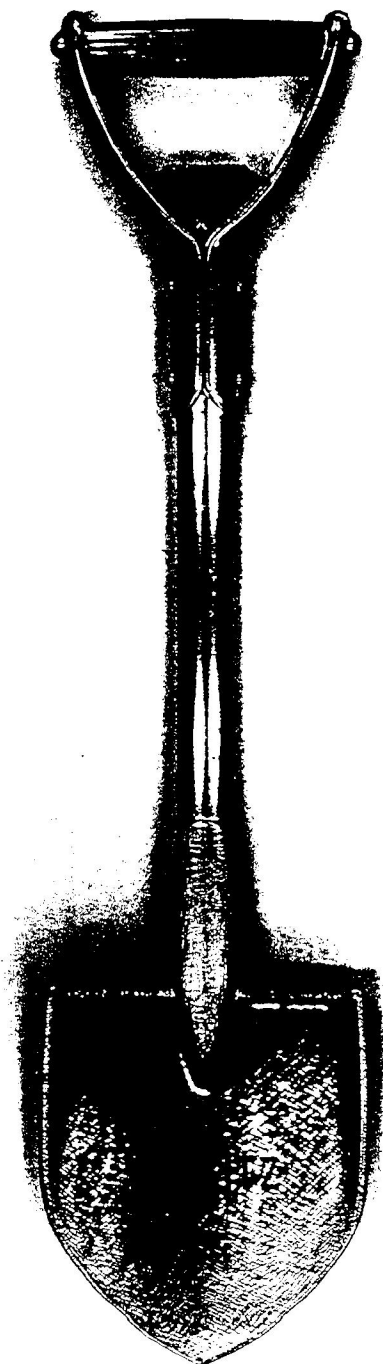


N-89

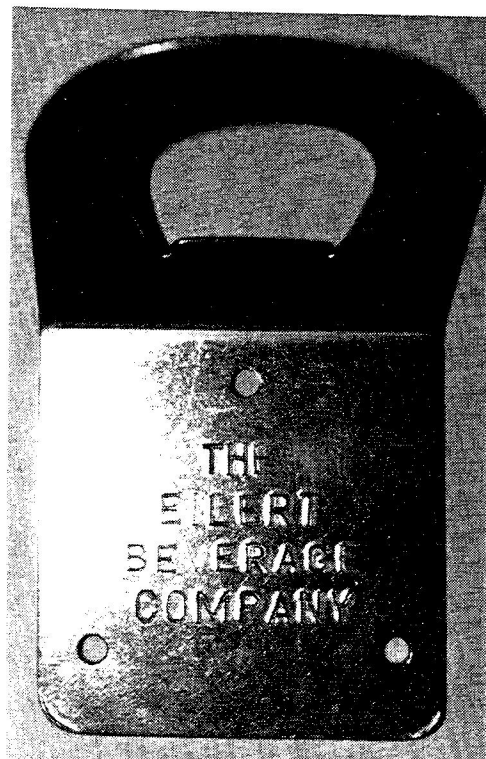


N-90

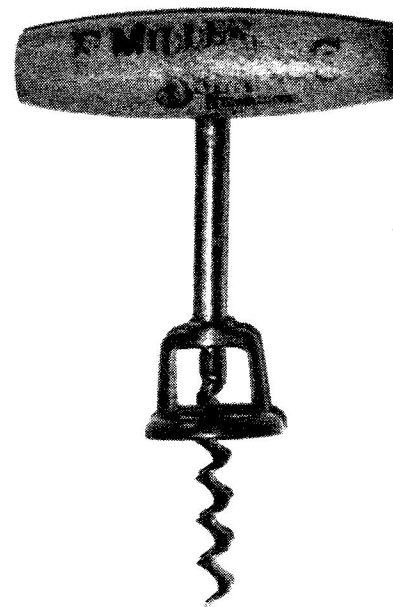
1997 New Discoveries (Continued)



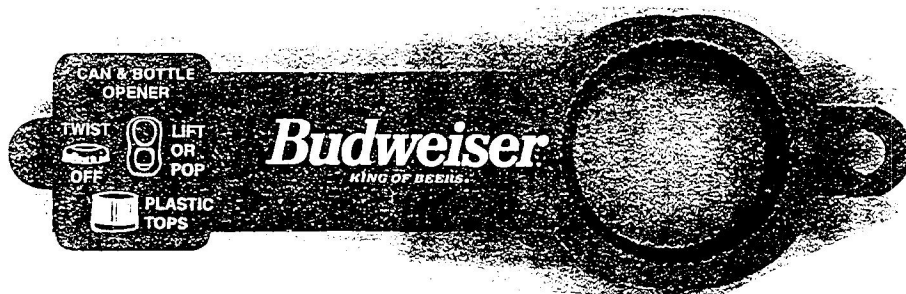
N-91



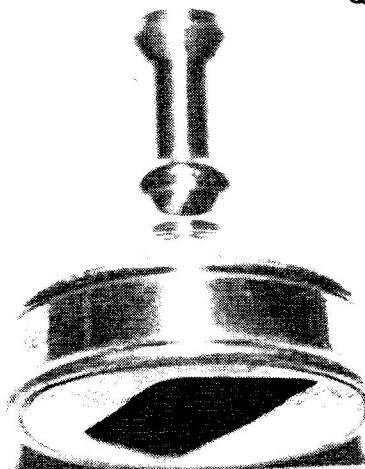
O-19



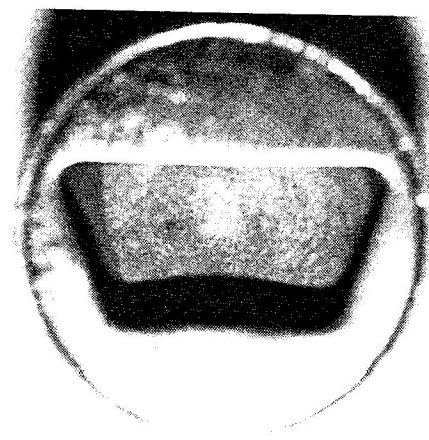
P-134



Q-52



R-18 Side

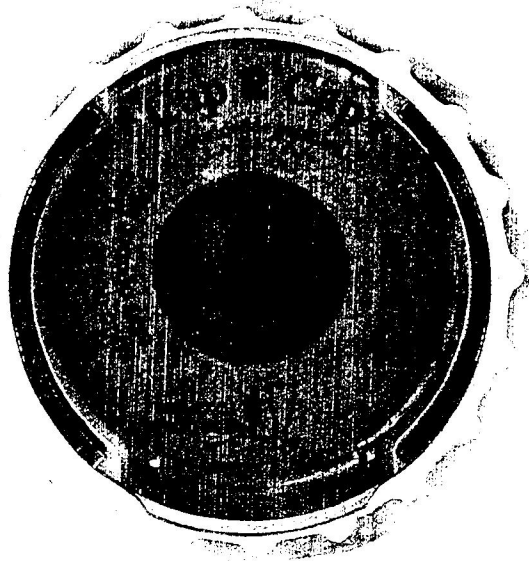


R-18 Bottom

1997 New Discoveries (Continued)



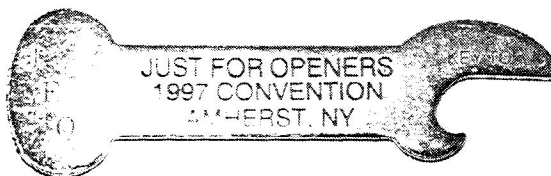
Q-53 Top



Q-53 Bottom

Official 1997 Convention Opener

X-9



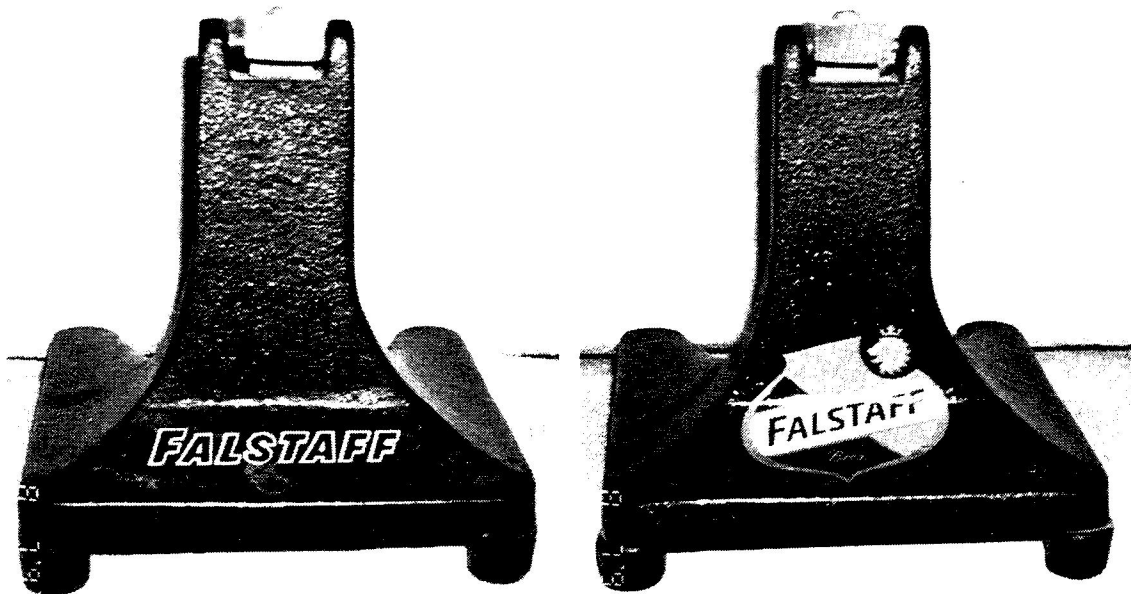
While traveling the back roads of Pennsylvania, Todd Milano spotted this "Canco" truck for sale. Of course "Canco" were the manufacturers of the "I-7" opener. Even though the truck was only a few hundred dollars, Linda, Todd's wife, was not too amused at the idea of this truck sitting in their yard. Todd did get a picture of the truck with son Hale holding on the door.

"Opener Trivia"

First I need to correct an "opener" that was shown in the July issue. The item shown on page 8 at the top left is a "Broom Holder" not an opener. At the Hillsville Flea Market, Labor Day Weekend, a dealer had the holder part clearly stamped "broom holder". I apologize if anyone went out and bought the piece thinking it was an opener.

Now for trivia questions for this issue:

Norm and Judy Jay stopped by for a visit on August 25th. They had been to a wedding in Charleston, SC and Norm decided the 250 mile detour was worth seeing my collection. Norm brought a set of pictures of his bar mount collection. I have added a couple of pieces from Don Whelan's collection and one from Art Santen's. Norm certainly has one of the top bar mount collections in the country if not the best. Shown are pictures of all the bar mounts in his collection with a couple of others owned by Don Whelan and Art Santen.



K-1-4 Falstaff

K-1-5 Falstaff Beer

The 2 Falstaffs are both decal applied. The K-1 Old Milwaukee on the next page has a brass plate attached. Does anyone have any of the other K-1s? (I am sure you do Art). All of the K-2s are embossed. The K-2 American is a 98-UL. The K-2 Drewry is for 16oz cans and is probably Canadian (any Canadian opinions?). The K-3 is a can holder with an opener (not shown). Both varieties of the K-4 Tapster are shown. The K-5s are smaller versions of the K-1. The K-5-6 Joliet Citizens is the only one known. The K-5 Hamm's is a 98-UL. Norm got it at the NABA Convention Auction. The K-6 Falstaff is another very tough bar mount and this is in super nice condition. The K-7 Budweiser is from Don Whelan's collection is the only one known. The original owner Bob Van Vactor found it at a flea market underneath a table for \$5. The K-8 Schlitz comes in black and silver and is fairly tough to come by. The K-9 Blatz is only the second one Norm has ever seen. The K-10 Schlitz is from Don Whelan's collection. Both it and the K-10 Pabst are very tough to come by. The K-10 Schlitz has a swing out shelf for tall and short cans. The Pabst and the Schroeder Hotel do not have the shelf. The K-10 Schroeder is the only non-beer K-10 Norm has ever seen. The K-11 Falstaff is a very tough type to find. The K-12 is from Art Santen's collection and once again very tough to find. The K-13 is a cousin to the K-1 and K-5 but is for opening 16oz cans. It is much taller than either the K-1 or K-5.

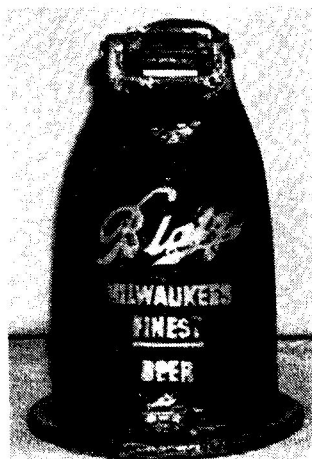
"Opener Trivia" (continued)



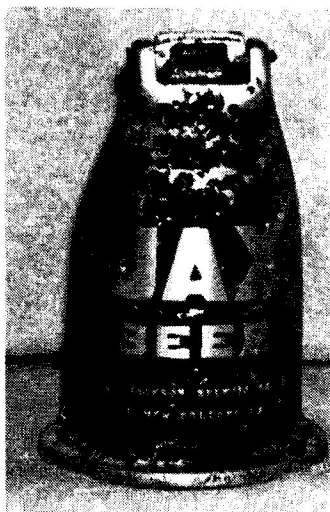
K-1-1 Old Milwaukee Beer



K-4-2 Falstaff



K-2-4 Blatz

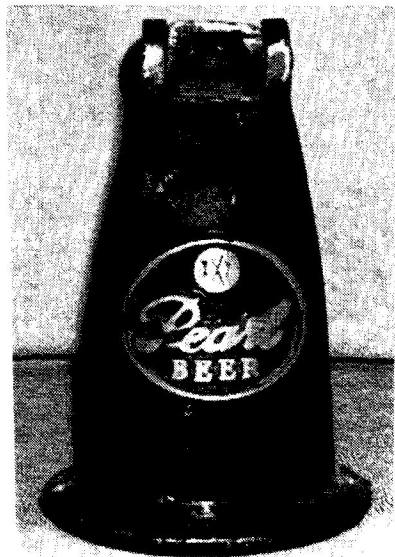


K-2-3 Jackson



K-2-5 Regal

"Opener Trivia" (continued)



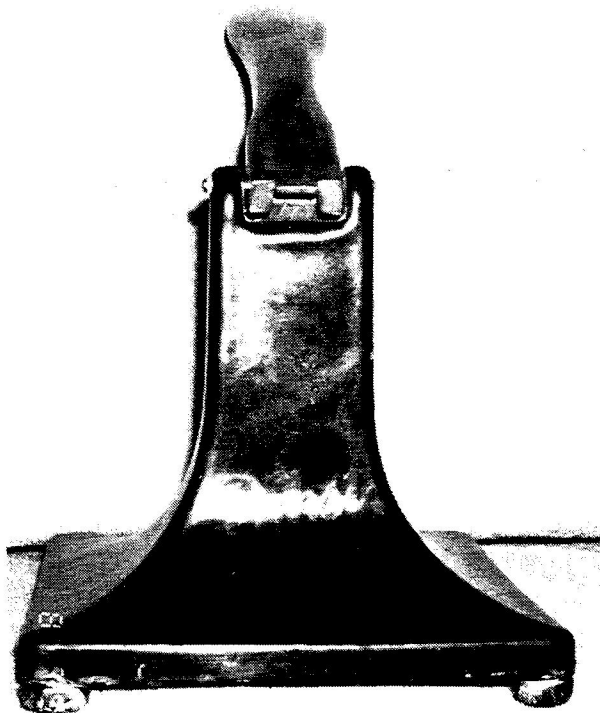
K-2-6 Pearl



K-2-UL American



K-2-999 Drewry



K-5-3 Pabst



K-5-UL Hamm's

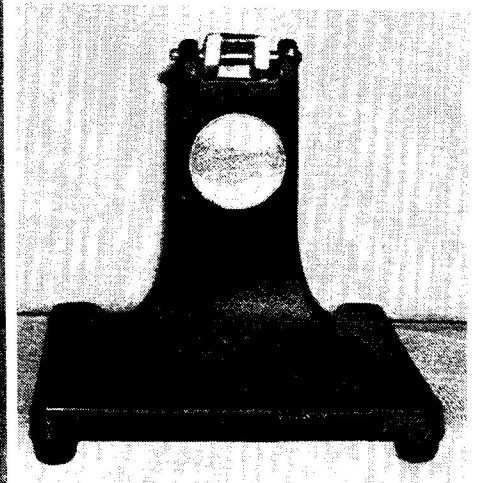
"Opener Trivia" (continued)



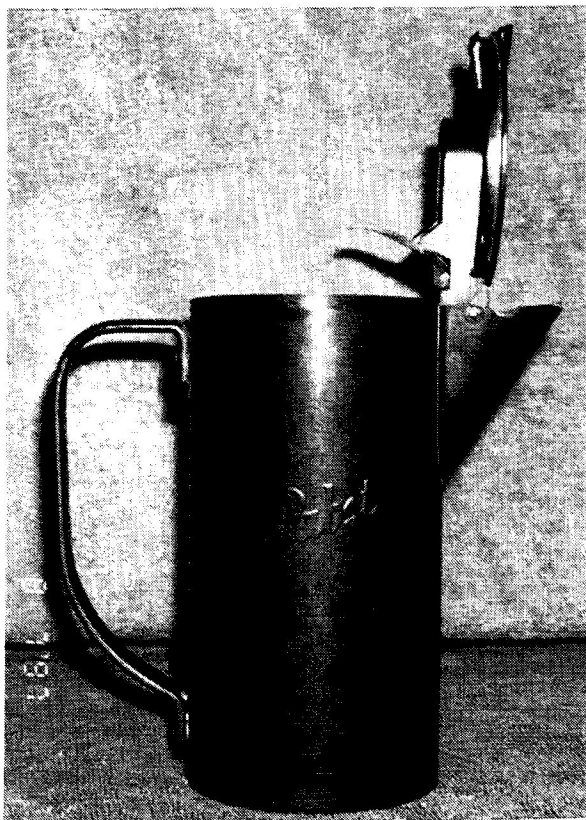
K-5-2 Schlitz (Black)



K-5-2 Schlitz (Silver)



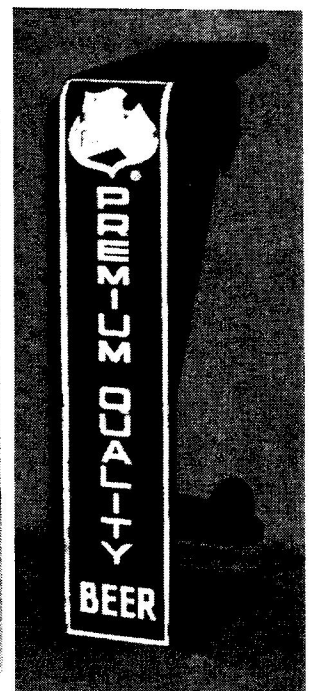
K-5-6 Citizen's



K-4-1-A Pabst

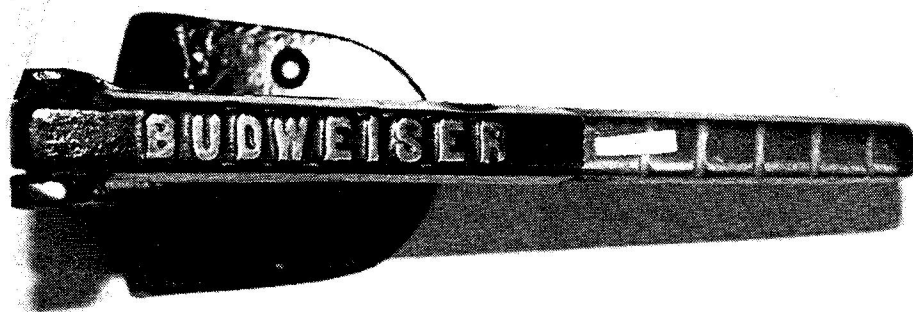


K-4-1-B Pabst

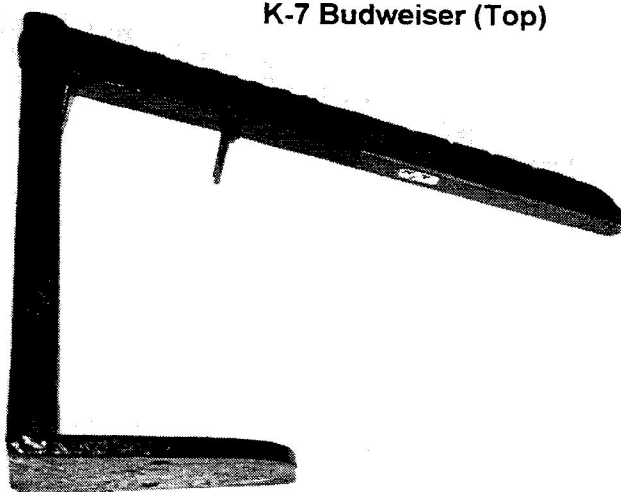


K-6-2 Falstaff

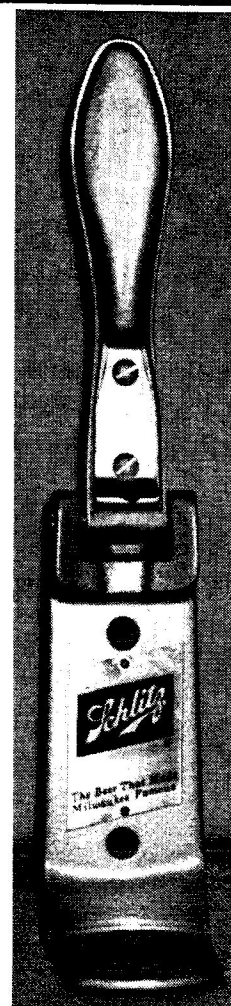
"Opener Trivia" (continued)



K-7 Budweiser (Top)



K-7 Budweiser (Side)



K-8 Schlitz (Silver)

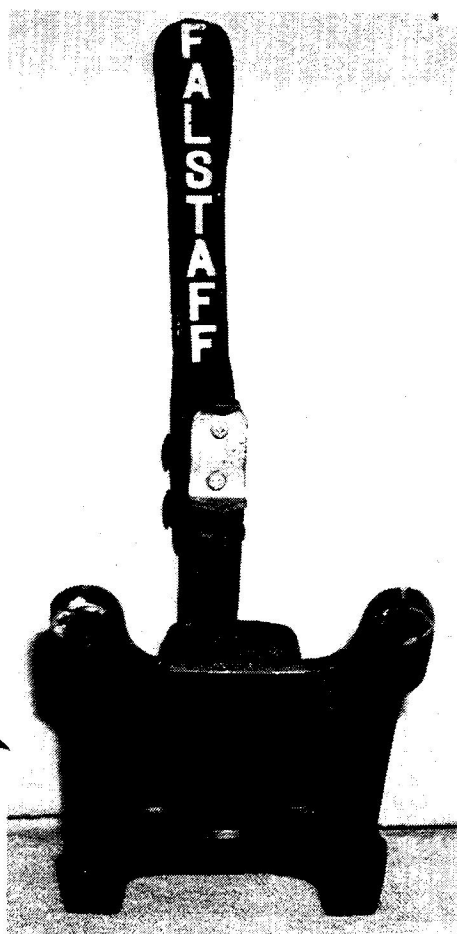


K-9 Blatz



K-12 Lone Star

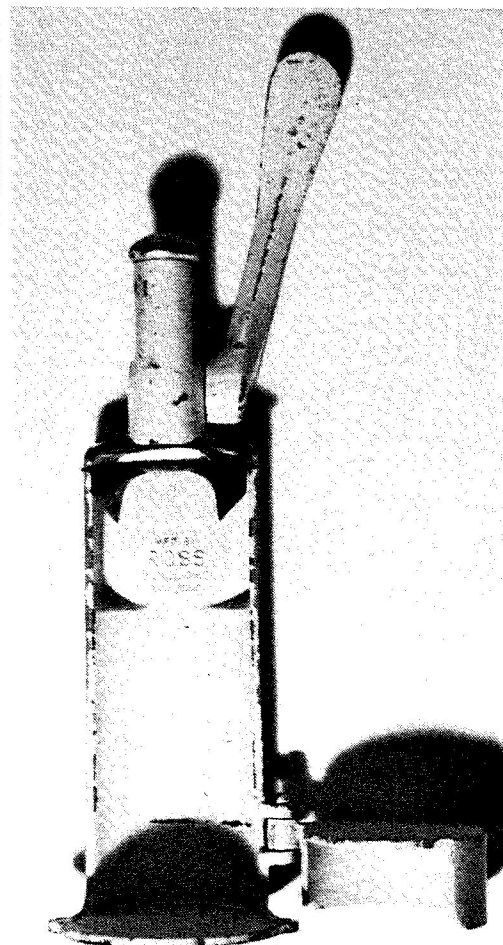
"Opener Trivia" (continued)



K-11 Falstaff



K-10-1 Schlitz



K-10-1 Schlitz (Back)

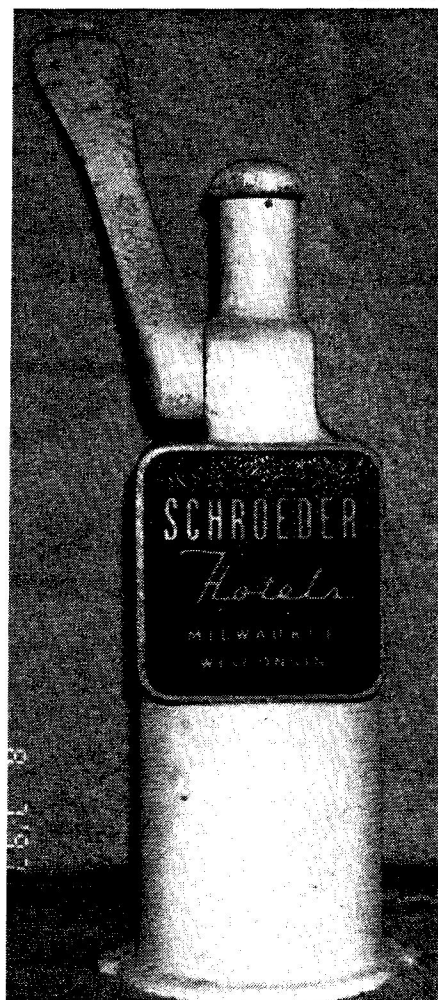
I-7 Quick & Easy Opener Box (from the collection of Hale Milano)



"Opener Trivia" (continued)



K-10-2 Pabst

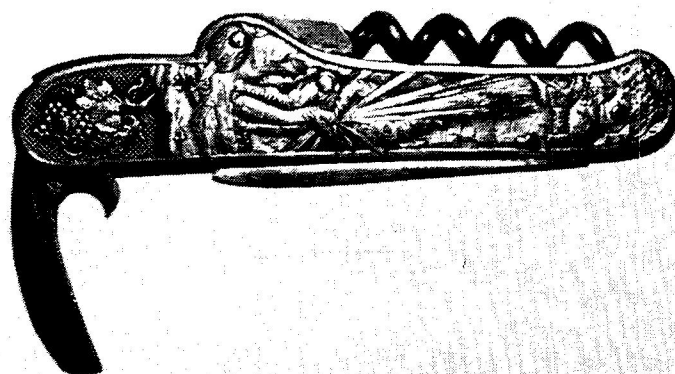


K-10 Schroeder Hotels



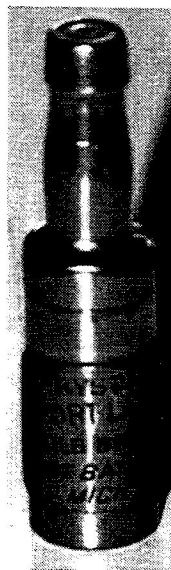
K-13 Schlitz

Pepsi=Cola (P-Type) Corkscrew/Knife



Thom Thompson is the proud owner of the only known Pepsi=Cola corkscrew/knife. Even though the knife is only in VG condition Thom paid \$800 for it in Petretti's Soda Auction and has been offered \$1400 for the knife. It has beautiful handles and is certainly one of the earliest Pepsi=Cola advertising pieces around. I know most of the JFO members collect beer advertising openers and corkscrews only but don't laugh off soda openers especially the main brands such as Coca-Cola, Pepsi=Cola, Dr Pepper, Hires and Moxie.

"Opener Trivia" (continued)



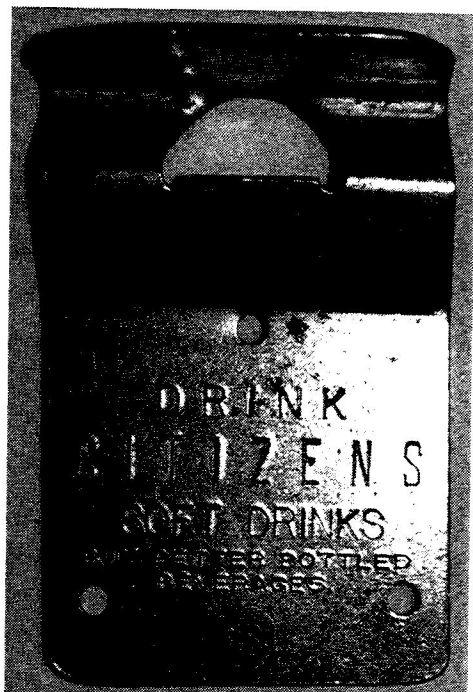
Left P-30-UL Bay City is from the collection Of NABA Member Rick Schmidt as is the L-2 shown above (P-30 is the only Bay City One known and the L-2 is 1 of 4 known)
Right Norm Jay's L-2 McAvoy, a 97-UL



The O-18 Coca-Cola is from Thom Thompson's Collection and the O-6 is from Fred Mosrie's Collection, both pieces are very rare and tough Types to find with any advertising especially the O-18



"Opener Trivia" (continued)



O-10-1 Citizens



O-4 Type Coca-Cola

Norm Jay owns the O-10 Citizens and I am showing it because the members get it confused with the new O-19. The O-10 actually has a "crinkle" at the opener end and the new O-19 has the opener end bent at 45 degrees. The O-4 Coca-Cola is shown resting on a box for a Coca-Cola door lock opener and belongs to Thom Thompson. The unusual thing about this O-4 "cousin" is that it has the patent date of Dec. 21, 09. The true O-4 was patented on June 6, 1912 by Harry L. Vaughan. This is obviously an earlier piece (it has 4 screw mounts) and a forerunner of the O-4 "Never Chip". John Cartwright has a similar opener to the Coca-Cola one advertising Nehi.

Buffalo Convention Correction

I must apologize to Marge Stahly from the last issue when I commented about her drinking at dinner one night. She told me she had "one medium black Russian and it was very well done".

Hillsville, VA Flea Market (August 29 th)

The annual Labor Day weekend flea market in Hillsville, VA was another pretty good show. I went with fellow JFO member Roger Jarrell and another fellow employee, Ken Waters. Right off the bat we run into Don and Bonnie Bull. They had came the day before and Don already had found a Korn's patent corkscrew knife. As is the case in these times a lot of common openers were around and I did get real lucky when I found an A-13-3 Gambrinus car in excellent condition. It was in a messy showcase that was hard to see in because of condensation. Roger found a M-73 Whiskey corkscrew and I found a few miscellaneous openers but nothing too good otherwise. Larry Moter turned up a few good openers at the show as did Ralph Tewksbury. JFO member Lou Sutton was set-up as a dealer. With 6 JFO members at one flea market, the going gets tough.

"Opener Trivia" (continued)

Chuck King was not only lucky enough to find a B-7-UL from Hinckel Brewery of Albany (NY), he also received the following B-7 "Handy Pocket Companion" instruction sheet. The B-7 is stamped "Handy Pocket Companion Patented Nov. 28, 1905". The sheet proposes 18 different uses for the B-7.

01) Lifting and Pulling Carpet Tacks

02) Bottle Cap Opener

03) Lifting Pot or Kettle from a Fire

04) Glove Buttoner

05) Cigar Box Opener

06) Pulling Rusty Pens from Holder

07) Tightens Window Shade Springs

08) Shoe Buttoner

09) Pulling Wire from Bottles

10) Watch Case Opener

11) Fingernail Cleaner

12) Basting Thread Puller

13) Fine Fingernail File

14) Paint Can Opener

15) Wide Mouth Bottle Opener

16) Key Ring

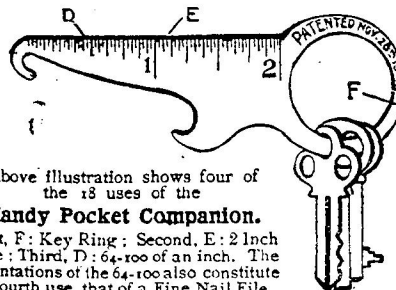
17) Two Inch Ruler

18) 64/100 Inch Ruler

THE HANDY POCKET COMPANION

Patented in European Countries, United States and Canada.

Can be used for 18 different purposes as described and illustrated below.



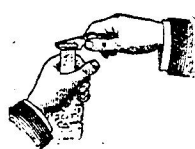
Above illustration shows four of the 18 uses of the

Handy Pocket Companion.

First, F: Key Ring; Second, E: 2 Inch Rule; Third, D: 64-100 of an inch. The indentations of the 64-100 also constitute the fourth use, that of a Fine Nail File.



Lifting and pulling carpet tacks.



Bottle Cap Opener. Opens quickly and is not dangerous, as it never breaks neck of the bottle like the common kind.



Lifting any kind of thin handle pot or kettle from fire or stove.



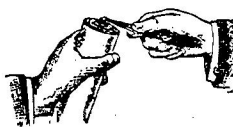
Glove Buttoner.



Cigar box opener.



Pulling rusty or old pens from holder.



Winding up or tightening window shade springs. Has no equal for this purpose.



Shoe Buttoner. There is no article made especially for the purpose that buttons shoes more easily.



Pulling wire from bottles.



Watch case opener.



Nail cleaner, always handy.



Basting thread puller. Handiest article for the purpose that was ever invented.



Fine Nail File. nothing more handy.



Paint Can Opener.



Wide mouth bottle opener.

New E-Mail Addresses

Steve Armstrong	SUNSET@CLEARWATER.NET	
Ed Broders	USBCLEAB@IBMMAIL.COM	
Sandra Emme	PG0028@EPFL2.EPFLBALTO.ORG	(Change)

October New Members, Renewals, Address Changes & Corrections

Just For Openers now has 300 members (New Members: Numbers 833-837)

Mem #	Last Name	First Name	Spouse	Street	City	State	Zip	Phone/E-Mail	Specialties /(Sponsor)
619	Archer	John		2051 Allen Blvd Apt 3B (Address Change)	Middleton	WI	53562-3454	(608) 238-0651	Types "A", "B", & "P" and Other Wisconsin Openers
699	Bialock	Lin	Shirley	908 Wyldewood Rd	Durham	NC	27704-1602	(919) 477-1716	NEHI (John Stanley)
835	Cook	Dick		31 Clark St	Norwood	NY	13668-1003	(315) 353-2579	Wrought Iron & Brass Figural
623	Gideon	Jess	Carolyn	130 Treasure Isle Rd	Hot Springs	AR	71913-8415	(501) 767-6607 (501) 767-6221	All Types of Openers (Rejoin)
837	Grubbs	George	Norma	286 Weeping Oak	Shreveport	LA	71106-7682	(318) 797-0128	Openers- Trays- Glasses- Lighters
838	Hewitt	Don		404 S Terrace	Wichita	KS	67218-9999	(316) 683-4228	
834	Morean	Dan	Mary Pat Hagan	36 West St	Malden	MA	02148-5333	(617) 322-3725	Brewery Memorabilia including Openers & Corkscrews (Ed Kaye)
764	Nichol	Bob	Michelle	2110 Long Lake Shores	West Bloomfield	MI	48323-1925	(248) 338-0550	Corkscrews (Rejoin Don Bull)
836	Schultz	Breneman	Helen	1111 Walnut St	Columbia	PA	17512-1362	(717) 684-6869	
680	Schwimmer	Mike		325 E Blodgett Ave	Lake Bluff	IL	60044-2112	(847) 295-1901 (New Area Code)	Cigar Box Openers (John Stanley)
684	Westland II	Deane	Kristi	1612 S 13th Ave	Saint Charles	IL	60174-4504	(630) 513-6090 (New Area Code)	Neons-Bottles-Openers-Chicago Breweries

Spouse's Corner

by Pat Stanley, the Editor's Spouse

Openers 101

How exciting! In this issue I am going to present a little handbook for Spouses to carry around. With this book, you will be able to instantly classify what "Type" opener you see wherever you may be on a hunting adventure. Where deemed necessary, pictures are included. References are made to the "1997 Handbook of United States Beer Advertising Openers and Corkscrews", herein called "Handbook".

Opener Categories (Types)

A. Flat Figural Openers	L. Can and Bottle Shaped Openers
B. Key Shaped Openers	M. Miscellaneous Openers
C. Flat Metal Cap Lifters	N. Novelty Openers
D. Cast Iron Cap Lifters	O. Wall Mount Stationary Openers
E. Wire Formed Openers	P. Corkscrews
F. Multi-Purpose Openers	Q. Newer Plastic or Steel Openers
G. Cap Lifters	R. Figurals (3-D)
H. Over the Top Style Cap Lifters	S. Bottle Bottle Openers
I. Combination Cap Lifter/Can Piercer	T. Tap Knob Openers
J. Can Piercers	X. Convention Openers
K. Special Can Piercers	Z. Class By Itself Openers

A. Flat Figural Openers

This type includes Mermaids, Ladies Legs, Lions, Dogs, Cars, Fish, Baseball Players, etc. Look at A-30 and A-53 in the Handbook (Pages A-3 and A-4). At first they appear to be the same, but there is a difference. The A-30 does not have a gas key, the A-53 does. What is a gas key? It was used to turn on the old timer gas lights on the old timer cars. I now know that I have an A-30 on my key chain.

B. Key Shaped Openers (See Picture at end of Article)

Now, I ask, why are these called key shaped? They don't look like a key to me. Oh, I find out....they are the most common ones for "key chains". The first one John gave me was a B type with a Wall Street Journal advertising on it, appropriate for an accountant, but I wanted something prettier, so the A-30 came along. You place the opener on the bottle cap at a perpendicular angle on the edge of the cap and pop it off. The brass Bs with enamel paint are my favorites.

C. Flat Metal Cap Lifters (See Picture at end of Article)

Some of this is almost logical. This type lifts the cap off by applying the opener horizontally, surrounding the bottle cap. The opener itself has an open area. The handles are filled in. This *is* interesting. When you learn a little, it means more, but a little knowledge might be dangerous!

D. Cast Iron Cap Lifters

These are like "C" types, only made of cast iron, rather than metal.

Spouse's Corner (continued)

E. Wire Formed Openers (See Picture at end of Article)

Same concept as the cap lifters, but the handles are often open. They look like the safety lollipops we had as kids. If you learn more, you may get to be a kid again and have your favorite flavored lollipop. At least the lifter part of this type appears to be formed from *round* strings of wire, not flat like the "Cs".

F. Multi-Purpose Openers

These practical openers serve more than one function. In addition to an opener, they may have a spoon, ice pick, corkscrew, hook, or perhaps some other utensil.

G. Cap Lifters (See 2 Pictures at end of Article)

Most "Gs" look three dimensional. They may have a top piece plus sides forming the actual opener mechanism, or the opener portion may look like a roller coaster.

Now this is beginning to get confusing. The G-1 seems in the wrong category to an amateur. I must go back to the "C" type to make another distinction. When you look at a G-1, remember the "Cs" are flat, the G-1 is a combination of a "C" and an "E", a lifter made from round metal, not flat.

H. Over the Top Style Cap Lifters (See Picture at end of Article)

"Over the Top" is a motivational book by Zig Ziglar. Over the Top cap lifters go *beyond* the edge of the cap closest to you...to the far side of the edge. The opener fits under the far edge and off comes the cap when you raise the handle.

I. Combination Cap Lifter/Can Piercer

We all have one of these in our kitchen drawer, a roller coaster lifter on one end and that pointed piercer on the other. We use the piercer at Christmas to open condensed sweetened milk, then have to wash it off before throwing back in the drawer.

J. Can Piercers (See Picture at end of Article)

If you know the "I" type, you know what these look like. They are one-half of an "I".

K. Special Can Piercers (See Picture at end of Article)

"I,J,K" collectors think all of their can piercers are "special", but what this really refers to is those big objects used to pierce cans. Some look like levers on a stand. You place the can under the lever and bring the handle down to open up your beer.

L. Can and Bottle Shaped Openers

These are always interesting to me too. I like the bottle shaped ones. But looking ahead, what are the "Ss", Bottle Bottle Openers. Keep reading. Would someone explain how the L-7 got in this group???

M. Miscellaneous Openers

Now, now beginners, let's not put everything into this group. We can make a "stab" at classifying openers as well as anyone else does. Like I said, some of them just don't seem to fit the group they ended up in. In the Handbook, there's 18 pages of these "Ms". They look like they could be in the lifters, piercers, etc. to me???

Spouse's Corner (continued)

N. Novelty Openers

Novelty openers are kind of in the "F" category, they seem to have other purposes, but maybe more glamorous ones. In these pictures you see, opener, knife, corkscrew, nail file combos; fish hooks; pencils; axes; hammers and nutcrackers.

O. Wall Mount Stationary Openers

Most of us remember the Coke openers mounted on the kitchen wall. Just replace Coke with a beer name and you have a type "O".

P. Corkscrews

"Corkie", our "Yorkie" says these are the best kind of openers. Everybody knows what a corkscrew looks like!! Sometimes, these cute little items are hidden inside a treasure, so check out things to see what's on the inside. (Corkie is hidden inside her blanket on the sofa, enjoying a Sunday afternoon.)

Q. Newer Plastic or Steel Openers

If you are unsure about these, call Art Santen. I like the one with Mary Kay advertising. Wonder why it has not been listed??? John, I need to talk to you!!

R. Figurals (3-D)

Dale Deckert, where are you??? See I know more about what other people collect, than what John collects. The prices on these amaze me. Watch for paint chips.

S. Bottle Bottle Openers

These are very different from "Ls". These are real bottle or can shape, like round. In some cases, the opener is in the bottom of the bottle.

T. Tap Knob Openers

If you are in a bar and order a draft, the bartender may dispense the beer by applying pressure to a little handle which has the beer brand name and emblem on it. That's a tap knob.

X. Convention Openers

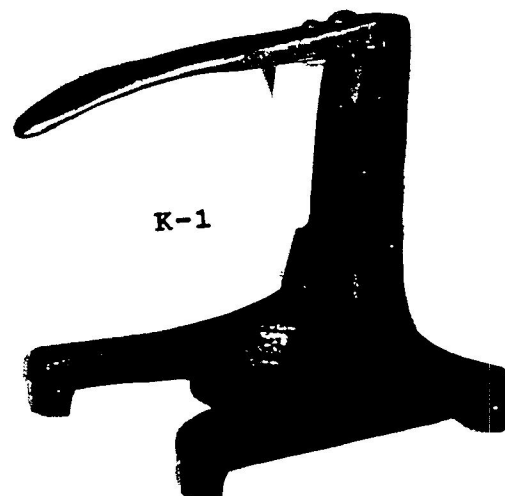
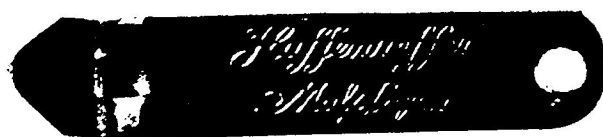
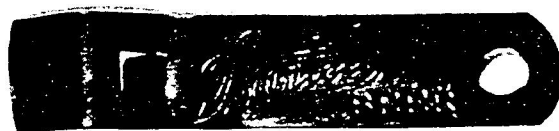
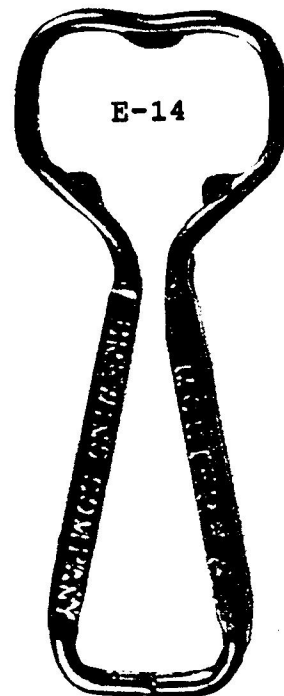
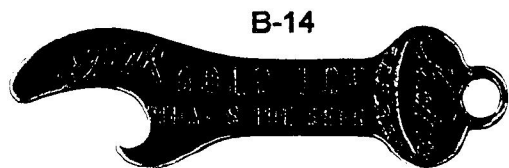
The Denver, Colorado ones were the most elaborate. The hot air balloon really unique. The co-hosts, Bill McKenzie and Gary Deachman did a fantastic job. The one shaped as Michigan is dear to me, having lived in that state for nine years. The dog shaped ones remind me of the fun of hosting a convention, and the cardinal adds some color to the convention opener collection.

Z. Class By Itself Openers

The only picture in this type is of a "Miracle Opener", which has a pliers like cap lifter. Hope that isn't what I tried to use while playing handy woman this week!!! It has a spring mechanism to add power to the process.

Now get the Handbook out, look at pictures to learn more about the types, then file them away in your mind for future reference.

Spouse's Corner (continued)



AUCTION NEWS

Joe Cardone has *stopped* his Opener Auctions. Joe Cardone has been running monthly auctions since 1979 and has decided that it is time to give up the auction business.

Lynn Geyer's "Advertising Auctions". Main emphasis is on Breweriana (some openers). Cost is \$25.00. Advertising Auctions, 300 Trail Ridge, Silver City, NM, 88061 (505) 538-2341

Fink's Off The Wall Auctions. Main emphasis is on Breweriana (some openers). The cost is \$25.00. Finks Off The Wall Auctions, 108 E. 7th St., Lansdale, PA, 19446 (215) 855-9732

Nationwide Ad Auctions. Main emphasis is on Breweriana (some openers) and also separate Soda Auctions. The cost is \$13.00. PO Box 30244 Mesa, AZ 85275-0244 (602) 807-3609

OTHER CLUBS

American Breweriana Association (ABA) offers a magazine (American Breweriana Journal) 6 times a year on breweriana collecting and an annual convention. Dues are \$25.00 per year. Contact Chris Galloway, Executive Director, P.O. Box 11157, Pueblo, CO, 81001

Canadian Brewerianist offers 10 issues per year (The Canadian Brewerianist) on Canadian Breweriana collecting and an annual convention. Dues are \$23.00 per year (US Funds). Contact Loren Newman, 2978 Lakeview Trail, Bright's Grove, Ontario, CANADA, N0N 1C0

Canadian Corkscrew Collectors Club (CCCC) offers a quarterly newsletter (The Quarterly Worme) on corkscrew collecting and an annual convention. Dues are \$30.00 per year. Contact Milt Becker, P.O. Box 9863, Englewood, NJ, 07631

East Coast Breweriana Association (ECBA) offers a quarterly newsletter (The Keg) on breweriana collecting and an annual convention. Dues are \$20.00 per year.

Contact John Stanley, PO Box 64, Chapel Hill, NC 27514-0064, (919) 419-1546

MICROBES (Micro Chapter ECBA): offers a quarterly newsletter on Micro Breweriana. Dues are \$7.00 per year. Contact Roger Levesque, PO Box 826, South Windsor, CT 06074

Figural Bottle Opener Club (FBOC) offers a quarterly newsletter on three-dimensional and either free standing or wall-mounted openers and an annual convention.

Dues are \$20.00 per year. A full color guide book is offered for \$28.00.

Contact Charles Lesser, 1953 Sugar Stick Rd., Harrington, DE, 19952, (302) 284-4792

National Association Breweriana Advertising (NABA) offers a magazine (The Breweriana Collector) 4 times a year on breweriana collecting and an annual convention. Dues are \$20.00 per year. Contact Robert Jaeger, 2343 Met-To-Wee Lane, Wauwatosa, WI, 53226

Newsletter Content and Deadlines for Sending in Articles and Receiving Newsletter
--

	January Issue	April Issue	July Issue	October Issue
Newsletter Content	New Additions to Handbook	Membership Directory	Convention Highlights	New Discoveries
Articles	December 1st	March 1st	June 1st	September 1st
Receiving	January 31st	April 30th	July 31st	October 31st

WANTED (Please remember there is no charge for Ads)
--

Members to Swap Openers for Openers, Trade List for Trade List. People who are starting out like myself who want to build their collections from other members in different parts of the country. Write or Call Scott Sherman, W5268 Quarry Rd Appleton, WI, 54915, (414) 954-1168

"A"s (Beer or Non-Beer), need # 10,11,14,16,17,18,19,22,30,33,37,41,42,43,44,46,47,51,54 & 56. Susan Reynolds, 2117 21st Ave South, Birmingham, AL 35223 (205) 871-4348 aft 5PM

Buying Type "A" (All), Type "B" Beer, Malt & Ginger Ale, and Any "A" or "B" from Mass. Gerry McLellan, 641 Waverly St, Framingham, MA, 01702

A-1-9 Golden Glow, B-18-439 Port Townsend, B-23-149 Golden Glow, E-9-111 Golden West & O-4-22 Golden Glow. Also any Breweriana (Large or Small) from Golden West Brewing Co. of Oakland, CA & Port Townsend Brewing Co. of Port Townsend, WA. Buy or Trade. John Cartwright, 950 Marlene St Apt B, Ukiah, CA 95482

A-9 Baseball Players (Beer or Non-Beer). Beer ones needed: A-9-8 Eureka, A-9-21 Amber, A-9-26 Penn, A-9-29 Waldorf, A-9-37 Butte, & A-9-38 Eagle.
(Please note that John Stanley will trade out of his collection to help Ed get the openers listed)
Ed Kaye, 7077 Cedarhurst Dr, Fort Meyers, FL, 33919, (941) 590-3068

Any: A-34 (+Non-Beer), A-42, B-6, B-7, B-22, B-31, Soda & esp. Coca-Cola & Pepsi-Cola Openers. H-1s: 7,8,9,12,21,23,24,26,27,28,31,34,35,39,41,42,44. 0-1: 1,2,3,5. Write for latest trade list. John Stanley, PO Box 64, Chapel Hill, NC 27514-0064, (919) 419-1546

Need These Types: A-22-1 Ballantine, B-59-1 Providence, and C-1-7 Budweiser. Great Trades Available. Jack Ford, 5351 Boyd Ave, Oakland, CA, 94618, (510) 655-5393

A-43-Dixie Beer. Want to buy straight out.
Marc Benjamin, 167 Nixon Beach Rd., Edenton, NC, 27932, (919) 482-2099

B-45, B-66, I-7, P-72, P-100, R-14 types with a Corkscrew (Beer/Non-Beer) and Silver Top Beer Openers. Herb Danziger, 550 Cherry Ct, Birmingham, MI, 48009-1459, (810) 646-9470

Beverwyck-B-18-499, B-21-147, C-10-48, E-9-87, F-6-87, I-2-2, I-14-1, J-5-5a, Dobler-I-11-232, I-18-6, Fitzgerald-C-20-12, I-12-23, I-18-9, Hedrick-E-9-55, Hinckel-P-30-1, Quandt-P-8-118, P-35-2, Stanton-A-20-13, C-12-103, C-18-24, Isengart-E-8-59, Stoll-B-18-380, E-8-107, Misc-A-28-40. Want to Buy. Bill Laraway, 627 Kenwood Ave, Delmar, NY, 12054, (518) 439-2739

Bond and Lillard Openers (would like to buy). Have A-29, would like any others. Lillard is a family name. George Love, 4301 Forest Plaza Dr, Hixson, TN, 37343, (423) 877-6006

C-2-6 Valley Forge, B-28 Howell & King, B-37 DuBois, and F-16 Wacker. Cash or Trade.
My A-11-1 Wooden Shoe (EX) for Harley-Davidson Bike and Goodyear Airplane Figurals.
Tony Zanghi, 2225 Deer Trail Rd., Coopersburg, PA, 18036, (610) 346-8232

"E"s! Have Trade List (various types) to send for "E"s that I need or will buy.
Larry Moter, 10149 Michaels Rd, Woodford, VA, 22580, (804) 448-3928

WANTED (Continued) (Please remember there is no charge for Ads)
--

E-2-19 Yuengling Por-Tor (Will trade heavy for this opener or pay cash).

Harold Queen, 1001 Centre Ave, Jim Thorpe, PA, 18229, (717) 325-2612

"E" Type Openers Wanted. Will Trade my "C", "E" and "I" Types.

Please send list of what you have and I'll send my list.

Ralph Tewksbury, 84 Wildwood Dr, Parkersburg, WV 26101 (304) 863-3627

E-11 #18 Arrow #9 Lone Star, H-6 #1 Blatz #2 Carling #8 Falstaff #3 Olympia #7 Olympia #4 Pabst #9 Pabst #6 Schlitz, I-7 #82 Balboa #46 Berghoff #64 Edel Brau #79 Frederick #54 Manhattan #55 Old Dutch #37 Schaefer. Will buy or trade (from collection if necessary).
Tom Gormally, 100 Nelson Pl, Westfield, NJ 07090, (908) 233-8867

H-8-5 Esslinger "Little Man Standing", H-8-19 Atlantic (Beer Garden Scene),

L-1-5 Pabst and L-1-8 Manns. Have some traders.

Harry Horn, 3113 Smoky Ct, Sacramento, CA, 95826, (916) 362-3590

DO THEY REALLY EXIST? I still want I-7-82,46,54,68,34,58,9,56 or other tough I-7 openers in VG or better condition. Will cut the chase and offer cash for your openers.

Tony Ricicki, 9 Laird Terrace, Somerset, NJ, 08873, (908) 873-0301

I-7 Beer or Non-Beer Openers. I'm interested. Extensive trade list or cash.

Hale Milano, 506 Springhouse Road, Camp Hill, PA, 17011-1454, (717) 737-5067

"I"-Types: Will send 10 "I" types from Wisconsin breweries to anyone with openers from states other than Wisconsin & Illinois. Will trade for what you think is equal value.

Darwin Wilcox, 8495 Croix Tr, Roscoe, IL, 61073, (815) 623-2255

Interested in obtaining Breweriana of Stag Beer, brewed in Belleville, IL. Also interested in obtaining Beer Tap Handles (Markers) for collection I share with my grandson.

Jack Westall, 5945 Shallow Creek Dr, Milford, OH, 45150, (513) 248-1127

M-2 Hires Root Beer "It's Pure" Opener in Good Condition. Will Pay Handsomely (\$250)!

Steve Sourapas, 1212 9th Ave West Unit 2, Seattle, WA, 98119, (206) 282-9922

M-3s #10,40,35,8,22,23,24,25,41,26,39,32,33,36,34,42,37,6

Vic Keown, 10547 Mert Ave, Saint Ann, MO, 63074, (314) 428-6343

P-20-2 Valley Forge (have L-2-1 and L-2-2 Anheuser Busch for trade or sale). Also M-3-27 Trommers, M-3-39 Hialeah, M-3-41 Harrison (Heidelberg), M-3-42 Seitz to complete collection. Ben Hoffman, 213 Simmons Rd, Perkiomenville, PA, 18704, (610) 287-8243

M-19 Marked "Tiffany & Co" on Handle End, Silver Plated. Also any Elgin, ILL Openers & Figural Bottle Openers. Mike Caraker, PO Box 1233, Elgin, IL, 60121, (847) 742-6165

P-19-10 Kalispell, P-18-3 Washoe, P-31-6 Eureka, Purchase or Trade.

Have P-19-2 Townsend, M-73 Highlander Sliders (Red & Blue), and many other P's for trade.

Trade M-73 Highlander (Red & Blue) for M-73 Kessler or M-73 Lorelei (any colors).

Bill Pattie, 37050 SE 89th St., Snoqualmie, WA, 98065, (206) 888-2496

WANTED (Continued) (Please remember there is no charge for Ads)
--

Louisiana Brewery Openers: Old Union, 4-X, New Orleans, Dixie, Regal & Jax. Ed Broders, 10220 Westwood, Baton Rouge, LA, 70809, (504) 293-2373, usbcleab@ibmmail.com

Wanted following Openers which have a **Cigar Cutter**. **B-28, N-6, N-28, N-49, P-29, P-48.** With or Without Brewery Advertising. Also any other Cigar Cutters. Cash or will Trade if I have your wants. Bill Ennis, 12220 14th Dr SE, Everett, WA, 98208

Cigar Box Openers: SHM-2,8,10,11,13,14 DHM-13,14,15,16 RBO-3,9,12 HOR-2,3 RND-6,8,9,10 SQR-1,4 NL-6 BB-1,6,19 BUT-2,4 PKT-1,5,6,8,9,10 SEP-2,6,7,8,9 MIS-4,6,7,10,11. Will purchase or trade from 600+ collection. (Types from the **Cigar Box Opener Handbook** copies available from Mike for \$3.00 which includes mailing) Mike Schwimmer, 325 E. Blodgett Ave., Lake Bluff, IL, 60044-2112, (708) 295-1901

Cigar Box Openers-Will Buy or Trade for other C.B.O.s or Beer Openers. Glen Enloe, 805 Tepee Dr, Independence, MO, 64056, (816) 796-9965

Older COCA-COLA Openers from the 40s and Earlier. Robert Bongiovanni, 154 Springers Mill Rd., Cape May Court House, NJ, 08210

Connecticut Openers Wanted: Write for want and trade lists. Paul Gauvin, 24 Strawberry Ln, Manchester, CT, 06040, (860) 646-9722

Corkscrews and Tin Can Openers: Have Beer Openers for Trade. Joe Young, 36 S. Weston Ave., Elgin, IL, (847) 695-0108

Corkscrews, Beer Advertising Letter Openers, Beer Advertising Knives, and Postcards depicting Corkscrews. Please send description, photo, sketch, photocopy, or tracing of what you have and advise price wanted. Don Bull, 20 Fairway Drive, Stamford, CT, 06903, (203) 968-1925

Corkscrews: Esp. Figural, Syroco, Thomason, Bakelite; also Wine Ephemera (Ads, Postcards, Labels, Grape Box Labels, Etc.); and Bakelite Anything. Buy Straight Out. Abby Nash, 172 Bush Lane, Ithaca, NY, 14850, (607) 266-0690

Corkscrews: Esp. Walker's "Waiters & Hallboys" and any old Williamson wire shafted "T"s with any attachments to the wood handle (such as brushes and wire cutters). John Vlossak, 1044 East Eldorado St., Appleton, WI, 54911, (414) 739-2789

Dixie Beer Openers: B-19-199, E-6-133, I-11-169, I-12-17, I-22-21, N-2-2. Do they really exist? Wish to purchase. Lew Burritt, 125 Vogt Dr., Belle Chasse, LA, 70037, (504) 394-3567

From the Enterprise Brewing Co of Fall River, MA: A-20-47, B-18-26, B-21-430, C-12-135, E-13-35, E-14-526, E-14-779, I-11-13, J-1-1, and N-22-1. Dave Dubrul, 88 Linden Terrace, Burlington, VT, 05401, (802) 864-2089

"F" Type Beer Advertising Openers, Beer Advertising Letter Openers, Beer Advertising Match Safes and Beer Advertising Knives (with or without openers on them). Larry Biehl, 448 Crandon, Calumet City, IL, 60409

WANTED (Continued) (Please remember there is no charge for Ads)

Idaho and Montana Beer Openers, especially from Kessler Brewing Co of Helena, MT and Sunset Brewing Co of Wallace, ID. Newer collector looking to expand current collection. Steve Armstrong, PO Box 1938, Orofino, ID, 83544, (208) 476-0128

Any Openers from Jamestown Brewing Co, Kuhn's Beer, Chautauqua Brew, Monessen, PA, Independent Brewing Co, unusual Schaefer, and all Cleveland Beers. Ed Schaefer, 366 Bassett Rd., Bay Village, OH, 44140, (216) 871-0449

Lexington Brewery (Dixie Beer) & Coca-Cola Openers. Want to buy any figurals or unusual older examples of these. Also looking for old manufacturer's brochures or catalogs (originals or copies of). Thom Thompson, 123 Shaw Ave., Versailles, KY, 40383, (606) 873-8787

Louisiana Brewery Openers from the following breweries: Old Union, 4-X, New Orleans Brewing Co., Dixie, Regal & Jax. I would like to sell or trade for openers a Seagram's Mount Royal light illuminated sign with clock #0710348021104. Ed Broders, 10220 Westwood Ave, Baton Rouge, LA, 70809, (504) 293-2373

New York Openers: E-4-345 Koch, E-4-163 Deer Park, E-4-313 Hittleman, E-6-132 Watertown, E-14-504 Greater New York, E-14-312 Amsterdam. I have Tons of great openers to trade. Mark Barren, 6141 Tachi Dr., Newfane, NY, 14108-9517, (716) 778-9724

My P-1-2 Anheuser-Busch Corkscrew & \$40 for your P-1-4 Toledo Brewing Co., or P-73-3 F. D. Radeke Brew. Co., or P-89-1 Banner Brewing Co., or P-97-1 National Brewery Co. Ollie Hibbeler, 298 Highline Road, Lake Ozark, MO, 65049

WASHINGTON D.C. Openers and/or Corkscrews. Also figural corkscrews. Sandra Emme, PO Box 1454, Upper Marlboro, MD, 20773, (301) 627-8207

West Virginia Openers (B-7-12, B-18-110, and H-4-3), also Southern US Beer openers and corkscrews. Roger Jarrell, 1500 Sedwick Rd., Durham, NC, 27713, (919) 544-7787

Wooden Shoe (Minster, Ohio) and Sebald (Middletown, Ohio) Brewery Items. Jim Stork, 7504 Parliament Crt, West Chester, OH, 45069

SELLING (Please remember there is no charge for Ads)

"Openers and Corkscrews For Sale", Send SASE (Business Size) for 4 page list. Carl T. Jantos, 7025 Kevin Drive, Bethel Park, PA, 15102-3913

"American Breweries II": by Dale Van Wieren. Over 18,000 entries for nearly 8,000 brewing firms, tracing names, addresses, and dates of operation. (\$28 1st Class). John Stanley, PO Box 64, Chapel Hill, NC 27514-0064

"JFO Back Issues" xeroxed for \$50.00 postpaid. Xerox copies of all JFO back issues 1979-96 (72 issues). John Stanley, PO Box 64, Chapel Hill, NC 27514-0064

Just For Openers Auction Guidelines

Please Note: No Commission Is Charged For Any Openers Consigned

This auction is a service to members of JFO. Consignments can consist of up to 20 openers (of course if you have more than 20 nice openers and/or corkscrews for the auction, I would consider auctioning the whole lot). I would appreciate anyone wishing to submit openers for the auction, write me first. Include a list of openers you wish to auction along with a condition for each item. If you wish to auction an item with a value of over \$50.00 I would be willing to place a reasonable minimum bid on the item. Any openers submitted for the auction should have a minimum value of \$5.00. I presently have many less than \$5.00 openers available for the auction. Money received for your openers is sent to you within 3 to 4 weeks of the closing date.

Please Write First Before Sending Consignment Material.

Auction Notices

Note: Anyone bidding on items from the enclosed October issue auction will receive a special JFO auction that will start mid-November and close December 30th.

The July JFO Auction brought the highest result (for JFO auctions) yet for a single opener, \$137.17 for the P-13-1 Schlitz.

Corkscrew Article Part II from Michigan Wine Country Newsletter

by Richard Scheer, Owner of the Village Corner, Ann Arbor

I broached the subject of corkscrews in the Fall 1996 issue of MICHIGAN WINE COUNTRY, beginning with the very BASIC models that feature simply a helix (coiled wire) and a handle and demand that the user exert brute force for cork extraction. The article explained the workings of more sophisticated corkscrew devices, such as the popular WING and BARREL types. It dwelled at length on the widely-used WAITER'S corkscrew because there have been many modifications and improvements made to this style of opener over the last several years, including serrated knife and cutting wheel options, floating pivot point, and teflon coating to the helix. This corkscrew style remains the sommelier's choice.

Hundreds of corkscrew models have been patented since the late 18th century, many of them variations on a few standard types. By the 1980s it might have seemed there was hardly room for another option when Texas inventor James Hallen came out with his first SCREWPULL. The 'Table Model' consisted of a hard plastic frame that rests on the bottle top and a six-inch long teflon-coated helix with plastic handle attached. Inserted through a hole at the top of the frame, the sharp-tipped, narrow helix penetrates the length of the cork and then draws it out in one continuous motion. For simplicity, ease of handling, leverage, and control, this corkscrew represented a significant step forward in the art of cork extraction, and it soon replaced the once-popular barrel models in wine cellars

throughout Europe. It proved to be a sensation in this country, too.

Hallen later developed a 'Pocket Model', which I prefer because it is compact, includes a foil-cutting knife and crown-cap opener in its frame, and has a handle that telescopes to six inches in length for greater leverage, ease and control of the cork extraction.

Hallen's ultimate SCREWPULL invention is the 'Lever Model,' a compact, lightweight, portable alternative to those giant, rapid-fire bottle-opening devices seen clamped to bar-tops in restaurants (and usually equipped with an auger instead of the preferred helix form of cork penetrator). It's easy to use. With one hand, the operator clamps the device to the wine-bottle top, and with the other he brings the lever to a close, which inserts the helix in the cork. Opening the lever extracts the cork and repeating the action removes the cork from the helix. A boon to the wine trade, this 'Lever Model' Screwpull accommodates assembly-line cork extraction at large tasting events. For the casual wine consumer, it's rather an expensive gimmick, yet it undoubtedly makes for a show-stopping performance at dinner parties.

One of my favorite wine-bottle openers for quickness and ease of use (as well as leaving observers' mouths agape) is not a corkscrew at all, but a cork puller. This device consists of a pair of thin, narrow, flexible metal blades mounted in parallel to a flattened loop of a handle. In storage the blades are protected by a metal or plastic sheath. Remove the sheath,

and you'll notice that one blade is slightly longer than the other. Insert the longer blade first between cork and glass (about 1/4 inch); then insert the shorter blade opposite. Rocking the handle back and forth, you gently push down each blade in turn about 1/4 inch at a time until the frame of the handle rests on the top of the cork. Then simply twist and lift. The cork comes out with ease and can be removed from between the puller's blades in one motion—no need to untwist as from a helix.

This cork puller bears the nickname, 'The Butler's Friend,' for it works equally well in reverse. If a wine butler opened the wrong bottle, he could restore its cork practically in pristine condition using this twin-blade cork puller device. Less scrupulous butlers might play the old 'switch-a-roo' trick on their employers and enjoy the finest fruits of the wine cellar for themselves! Many winelovers also refer to this type of cork-extracting device as the 'Ah-So' cork puller after the brand name of the original German model.

The 'Ah-So' cork puller works best extracting corks from straight-necked 'Bordeaux'-shaped bottles. Where bottles quickly broaden out from their apertures, such as in the case of 'Burgundy'-shaped bottles and even the tall, slender 'German'-wine bottles, this device must be used very carefully or the cork is apt to be forced down into the bottle. It's ironic that a German conception is most difficult to use on German-style bottles because of their short corks and flared neck shapes. Always push in

just one blade at a time, and very gently. If you begin to lose the cork, you can often pull it back up to the top even when the blades have been only partly inserted in place. But never perform the final extraction until the frame of the handle rests down on the top of the cork. Otherwise, the twisting motion of your hand is apt to snap off one of the blades.

This 'Butler's Friend' also works best on natural corks in bottles of normal aperture. Corks that are amalgams of cork chips, and synthesized cellulose corks as well, are less resilient and can prove murderous to twin-blade cork pullers. A restaurant-owner friend of mine came back from vacation to find a heap of broken 'Ah-Sos' on her desk. The staff pleaded innocent; a new and popular California wine, just added to the list, had artificial corks! Narrow-mouthed Italian bottles, often stoppered with super-compressed, amalgamated corks are no friends of the 'Butler's Friend' either.

Now, what about those air-pump devices, port tongs, sabers, and other esoteric, demonstrative cork-removing systems? Look for these and more in my Fall 1997 MICHIGAN WINE COUNTRY column.



Results of July 1997 JFO Auction Closing August 13, 1997

1	A-001-007	FITGER	M	31.00
2	A-001-023	GRAF	G	18.30
3	A-002-999	FADA'S TAVERN	VG	10.00
4	A-002-999	EISENHauer's CAFÉ	G	5.10
5	A-003-999	INDESTRO MFG	VG	6.00
6	A-005-999	SAGALOWSKY BOTTLE	VG	7.50
7	A-012-020	O'KEEFE	VG	25.00
8	A-013-015	ROSENBERG MALT	G	45.11
9	A-013-999	STORZ AUTO	G	23.00
10	A-013-999	CINCINNATI SPEEDOMETER	G	23.00
11	A-015-005	SCHREIRER	G	12.71
12	A-018-017	MUNICH MALT	VG	20.11
13	A-020-026	PHOENIX	VG	33.76
14	A-021-011	CATARACT	G	12.00
15	A-021-083	GOLDEN GLOW	G	15.00
16	A-021-UL	BLATZ	VG	20.50
17	A-021-999	BILLIE & LEE'S BLUE EAGLE	VG	6.30
18	A-021-999	CASE BEER	PO	3.30
19	A-021-999	CHICAGO 1933	G	20.00
20	A-026-001	EMPIRE STATE (MIN BID \$60)	EX	96.25
21	A-028-999	ST JOSEPH SODA	G	10.71
22	A-028-999	BEAVER DAM BOTTLING	G	15.00
23	A-029-003	K-B	G	8.71
24	A-029-007	RAINIER	PO	5.50
25	A-029-999	SCOTTY'S MALT	G	3.00
26	A-042-004	GRAND ISLAND	VG	43.00
27	B-002-015	NATIONAL	G	15.00
28	B-004-002	SCHEIDT (BRASS)	VG	37.71
29	B-009-999	SHIVELY HOTEL	VG	18.71
30	B-013-032	IROQUOIS	EX	25.90
31	B-013-999	NIFTY VAUGHAN AD CARD	EX	41.00
32	B-014-023	GOLDEN GLOW	VG	15.00
33	B-014-050	GOLDEN GLOW	EX	21.11
34	B-014-109	GOETZ	G	30.00
35	B-014-116	PHOENIX	G	21.00
36	B-014-999	SILVER SPRING	G	11.80
37	B-014-999	WARSAW PONY KEG	G	11.80
38	B-015-002	ZANG	G	20.11
39	B-018-026	ENTERPRISE	EX	19.50
40	B-018-067	RUPPERT	G	15.00
41	B-018-197	KAMM & SCHELLINGER	G	7.81
42	B-018-198	KANSAS CITY	VG	15.00
43	B-018-528	ELFENBRAU	G	13.50
44	B-018-558	BUFFALO CO-OP	VG	17.65
45	B-018-LOT	(1) #23 DUBUQUE (2) #116 RAINIER (3) #365 HOME	VG	30.11
46	B-018-UL	AKRON	PO	15.00
47	B-018-999	JAHREISS	PO	3.00
48	B-019-017	HAMMS	G	9.76
49	B-019-054	MAIER	G	5.50
50	B-019-LOT	(1) #202 ACME (2) #31 RAINIER (3) #35 SEATTLE	VG	24.80
51	B-019-UL	HEIM BRAU	VG	26.10
52	B-019-999	HUTSELL & SMITH	VG	3.00
53	B-021-076	SCHLITZ	VG	14.59
54	B-021-091	WIELAND	G	9.00
55	B-021-127	PIEL BROS	VG	11.55
56	B-021-149	CHATTANOOGA	G	35.00
57	B-021-238	DU BOIS	EX	21.30
58	B-021-430	OLD COLONY	PO	5.05
59	B-021-457	MANHATTAN FOOD SPEC	EX	18.60
60	B-022-106	FAMOUS	G	12.00
61	B-022-999	RIST LIQUOR	G	6.71
62	B-023-048	TUSCORA	VG	5.50
63	B-023-059	ATLAS	VG	14.52

64	B-023-097	PENN BEVERAGE	VG	7.95
65	B-023-999	KOOTENAY (CANADA)	VG	21.25
66	B-024-052	MATHIE-RUDER	VG	12.26
67	B-024-LOT	(1) #13 GB (2) #22 LUCKY (3) #30 RAINIER	VG	22.10
68	B-024-LOT	(1) #1 ACME (2) #37 ACME (3) #5 BURGERMEISTER	VG	6.01
69	B-042-008	MATHIE	EX	61.52
70	B-065-999	AMERICAN DEV	VG	10.71
71	C-001-003	SCHOENHOFEN	EX	111.06
72	C-010-018	PIEL	VG	8.65
73	C-011-013	SCHOENLING	EX	3.51
74	C-011-029	GRAF	VG	8.10
75	C-012-006	FIDELIO	VG	8.65
76	C-012-043	FELSENBRAU	G	5.23
77	C-013-032	FALLS CITY	VG	5.69
78	C-013-033	FALLS CITY (BOTTLE)	G	5.00
79	C-014-030	WAGNER BEVERAGE	VG	12.30
80	C-017-024	PRIOR	VG	7.81
81	C-017-999	GREAT BEAR BEVERAGE	VG	4.30
82	C-018-017	TROMMER	VG	7.85
83	C-019-006	INDEPENDENT MILWAUKEE	VG	5.71
84	C-024-001	HOFFMAN	VG	0.00
85	C-032-001	RAINIER (BOTTLE)	G	11.00
86	CBO-HKH6	LA ILUSION CIGAR	VG	20.00
87	CBO-RBO4	HAMILTON HARRIS CIGAR	G	20.00
88	CBO-RBO4	JOHN RUSKIN CIGAR	G	20.00
89	D-003-999	SCHWEPES	G	1.00
90	D-009-001	CHIEF OSHKOSH	EX	10.05
91	E-004-054	LIEBMANN BREWERIES	G	9.79
92	E-004-069	RUBSAM & HORRMANN	EX	8.95
93	E-004-LOT	(3) (1) #49 INDEPENDENT (VG) (2) #40 GOLDEN WEST (G) (3) #126 LUCKY LAGER (VG)		7.50
94	E-004-LOT	(4) (1) #48 HUMBOLDT (VG) (2) #70 RAINIER (G) (3) #71 RAINIER (VG) (4) #33 FALLS CITY (G)		7.50
95	E-004-999	BEAUFONT / CLIMAX	PO	0.00
96	E-005-067	STORZ	EX	2.51
97	E-006-003	BANKERS	VG	7.31
98	E-006-020	EASTSIDE	PO	4.51
99	E-006-210	PITTSBURGH	PO	7.75
100	E-007-030	RAINIER	VG	14.26
101	E-009-019	RUPPERT	G	3.31
102	E-009-043	RUHSTALLER	G	5.00
103	E-009-051	TACOMA	G	12.69
104	E-009-070	GUND	VG	10.69
105	E-009-075	MONUMENTAL	G	10.69
106	E-014-003	ACME / BOHEMIAN DIST	VG	9.59
107	E-014-034	BUFFALO	G	11.69
108	E-014-039	BUTTE	G	7.76
109	E-014-042	CANANDAIGUA	EX	5.01
110	E-014-192	MONTEREY	EX	11.59
111	E-014-253	SCHEIDT	G	5.01
112	E-014-278	STORCK PRODUCT	VG	19.76
113	E-014-284	TIVOLI	G	7.76
114	E-014-297	WEHLE	G	9.10
115	E-014-315	BALBOA	VG	9.59
116	E-014-374	SICKS	VG	12.26
117	E-014-469	BLACKHAWK	EX	20.76
118	E-014-544	ST CLARE	EX	20.76
119	E-014-571	WALTER	VG	15.00
120	E-014-614	HORNELL	VG	9.59
121	E-014-662	MOERSCHBACHER	G	15.00
122	E-014-740	HORTON	VG	15.75

123	E-014-LOT	(4) (1) #50 COORS (A) (EX) (2) #377 HAMMS (EX) (3) #187 MILLER (VG) (4) #208 OLYMPIA (EX)	21.11
124	E-014-LOT	(4) (1) #489 EASTSIDE (G) (2) #133 HAMMS (EX) (3) #538 REGAL (EX) (4) #257 SCHLITZ (G)	8.08
125	E-014-LOT	(4) (1) #100 GB (G) (2) #135 HAMMS (VG) (3) #228 RAINIER (EX) (4) #258 SCHLITZ (G)	5.01
126	E-014-LOT	(4) (1) #113 GOLDEN GLOW (VG) (2) #177 LUCKY (VG) (3) #237 REGAL (VG) (4) #256 SCHLITZ (EX)	5.01
127	E-014-LOT	(4) (1) #51 COORS (VG) (2) #155 HUDEPOHL (G) (3) #430 REGAL (G) (4) #292 VERNON (G)	5.01
128	E-014-LOT	(4) (1) #1 ABC (VG) (2) #473 BLITZ-WEINHARD (G) (3) #50 COORS (B) (VG) (4) #188 MILLER (G)	3.50
129	E-014-LOT	(4) (1) #68 EASTSIDE (G) (2) #163 KESSLER (G) (3) #536 RAINIER (G) (4) #302 WIELAND (G)	21.11
130	E-014-LOT	(3) (1) #102 GETTELMAN (VG) (2) #133 HAMMS (G) (3) #166 KINGSBURY (EX)	5.01
131	E-014-UL	WACHTER WATERTOWN	VG 21.89
132	E-020-001	ORTLIEB	EX 6.10
133	E-LOT (3)	(1) E-3-43 BANKERS (PO) (2) E-6-78 LUCKY LAGER (VG) (3) E-9-4 BLATZ (G)	3.51
134	E-LOT (4)	(1) E-3-13 KAMM (EX) (2) E-5 RED WING LIQ STORE (VG) (3) E-5 EVINRUDE OUTBOARD MOTOR (VG) (4) E-9-4 BLATZ (G)	5.10
135	F-002-LOT	(2) (1) #6 NORTH STAR (EX) (2) FEGELY'S SON (M)	12.71
136	F-005-012	BADGER MALT	G 7.71
137	F-005-031	BLUE LABEL	VG 16.00
138	F-006-007	HUEBNER	G 3.50
139	F-006-014	WIELAND	EX 18.00
140	F-006-028	RENNER PRODUCT	G 12.25
141	F-006-LOT	(3 MILK) (1) HOLDREGE CREAMERY (G) (2) KITSAP DAIRY (VG) (3) GEILFUSS' HOLSUM BREAD (G)	3.50
142	F-009-999	METROPOLITAN ICE	G 0.00
143	F-012-999	COOK WITH CALIFENE	G 6.50
144	F-012-999	HECKER CEREAL	VG 8.71
145	F-015-006	MATZ	G 17.10
146	F-LOT (3)	(1) F-2 DAHLKE OAKLAND, CA (VG) (2) F-6 CHERRY BLOSSOMS (G) (3) F-15 BROTHERS LIQUOR (EX)	1.00
147	G-001-022	PIEL (BOTTLE)	VG 7.80
148	G-002-007	POINT	EX 12.71
149	G-003-003	HAMMS	EX 7.51
150	G-003-005	ENGELKING	G 9.76
151	G-009-025	STEGMAIER	EX 15.50
152	H-002-054	BILLINGS	VG 21.99
153	H-002-999	CRYSTAL ROCK GINGER	G 5.71
154	H-002-999	CROWN CORK	VG 0.00
155	H-008-002	BUCKEYE	EX 25.52
156	I-007-017	GENESEE	G 1.08
157	I-007-027	NARRAGANSETT	EX 9.81
158	I-007-036	RUPPERT	VG 6.71
159	I-007-048	BUDWEISER	VG 9.76
160	I-007-059	SCHAEFER	VG 12.01
161	I-007-060	STORZ	EX 12.01
162	I-009-001	WALDORF	VG 4.51
163	J-009-002	BLATZ	EX 4.25
164	K-002-003	JACKSON (MIN BID \$40)	VG 56.00
165	L-001-006	RUPPERT	G 22.76
166	L-001-007	SCHLITZ	G 8.00

167	L-004-016	MILLER (LONG NECK BOTTLE)	VG 37.00
168	L-004-031	PITTSBURGH (STUBBY)	EX 26.40
169	M-003-005	EDELWEISS (YELLOW)	VG 31.50
170	M-003-012	GERMAN (OTT/RED)	G 13.71
171	M-003-014	PIEL (GREEN)	EX 21.00
172	M-003-018	STEGMAIER (OTT/BLUE) (MIN BID \$40)	EX 47.70
173	M-003-019	ZETT (RED)	EX 47.70
174	M-003-999	DR PEPPER (RED)	G 29.85
175	M-003-999	MOXIE (RED) (SLANTED LET	EX 39.85
176	M-004-002	BLATZ (SCRIPT)	EX 0.00
177	M-005-001	TIVOLI	EX 13.71
178	M-010-001	BALLANTINE	EX 6.50
179	M-011-001	BALLANTINE	EX 0.00
180	M-011-002	BALLANTINE (SCRIPT)	EX 6.80
181	M-012-001	BALLANTINE	G 3.51
182	M-013-001	BALLANTINE	G 6.71
183	M-018-001	BUDWEISER	EX 21.71
184	M-021-001	RAINIER STERLING	VG 42.00
185	M-024-001	COORS	EX 7.71
186	M-029-015	STERLING	EX 5.50
187	M-031-001	STORZ	EX 8.00
188	M-036-002	SCHREIBER	EX 21.50
189	M-062-001	SCHLITZ	VG 30.71
190	M-066-001	SCHLITZ	VG 45.77
191	M-074-001	BUD	G 25.00
192	N-002-001	DIXIE	G 4.98
193	N-009-999	CERRA BOTTLING	VG 0.00
194	N-009-999	DIEKMAN GINGER	EX 8.71
195	N-011-002	STONE	VG 5.50
196	N-013-001	BALLANTINE	VG 37.77
197	N-017-001	NATIONAL	VG 53.77
198	N-030-001	BLACK LABEL	VG 11.10
199	N-039-004	STORZ	EX 43.77
200	N-062-001	SCHLITZ	VG 47.00
201	O-002-999	SMILE (ORANGE MAN)	VG 26.50
202	O-005-006	JACKSON	EX 26.52
203	O-005-017	BURGERMEISTER	VG 26.52
204	O-005-018	FALSTAFF (4 STARS)	EX 24.10
205	O-005-999	PILSEN CERVUNION	EX 22.50
206	O-005-999	CERVEZA UNION	EX 21.50
207	P-008-117	PABST	VG 8.00
208	P-013-001	SCHLITZ (MIN. BID \$75)	EX 137.71
209	P-019-LOT	(3) 1) B WEISS WINES & LIQUORS 2) MINNESOTA LIQUOR STORE 3) STEIN WHISKEY KUTZTOWN, PA	G-VG 1.00
210	R-002-001	IROQUOIS	EX 37.77
211	Z-LOT (3)	(1) M-30 CRESCENT BOTTLING CO CAMDEN, NJ (VG) (2) N-11 HOTEL GREEN DANBURY CONN (VG) (3) F-6 ADOIRSTOCK FARMS (G)	1.00
212	Z-LOT (3)	(1) B-14-25 GRAND PRIZE (EX) (2) C-13-74 NATIONAL (VG) (3) F-6 ALCAZAR RANGE (VG)	20.26
213	Z-LOT (3)	(1) G-1-21 PABST (VG) (2) H-8-14 PABST (VG) (3) H-11-2 BLATZ (G)	3.00
214	Z-LOT (4)	(1) F-2-2 BLATZ (VG) (2) C-13-21 DOBLER (G) (3) B-24-SEAGRAMS (VG) (4) E-13-8 HAMMS (VG)	1.00
215	Z-LOT (4)	(1) C-35 DREWRY (G) (2) E-4 FINCH PAINT (VG) (3) F-22 MCLEAN SARDINES (G) (4) E-13-16 PABST (VG)	1.00

Total Realized \$3,466.34
High Lot # 208 for \$137.71

October 1997 JFO Auction-Closing November 19, 1997- Name & Mem #:

Send Bids To: John Stanley, PO Box 64, Chapel Hill, NC 27514

Auction Rules (Note: No Phone Bidding)

- 1) Only 1 Bid Per Item and Only 1 Bid Sheet Allowed for the Auction
- 2) Openers Sold to Highest Bidder
- 3) Identical Bids, Earliest Postmarked Bid Wins
- 4) 7 Days to Return Openers If Not Satisfied
- 5) Openers Shipped Upon Payment (Please Pay within 7 days of Receiving Invoice)
- 6) Results Shown Next JFO Issue (Winning Bidders Receive Copy with Invoice)
- 7) Shipping and Handling Extra

Conditions (CS): PO (Poor), G (Good), VG (Very Good), EX (Excellent), M (Mint)
 (UL-Unlisted in 97 Handbook, 999-Non-USA-Beer)

JFO # & Description from 1997 Handbook Of United States Beer Advertising Openers and Corkscrews

#	JFO #	Description	ST	CS	BID
001	A-001-023	GRAFS DRINK "THE BEST WHAT GIVES"	WI	EX	
002	A-001-062	COMPLIMENTS OF THE MANHATTAN BOTTLING WORKS MILWAUKEE, WIS.	WI	VG	
003	A-001-999	GOLDIE'S GRILL & PACKAGE STORE 1300 N.E. SECOND AVE. MIAMI, FLA.	FL	EX	
004	A-001-999	ASK FOR OUR "SELECT" ALE SILVER SPRING BREWERY LTD. SHERBROOKE, QUE. (CANADIAN)		VG	
005	A-002-999	FRIENDLY BAR WINONA, MINN.	MN	G	
006	A-004-009	LEISY BEER PEORIA, ILL.	IL	VG	
007	A-005-015	IDEAL FOOD PRODUCTS CO. CEDAR RAPIDS, IOWA. IDEAL MALT SYRUP (IYS IN CIRCLE)	IA	VG	
008	A-008-001	IN YOUR HOME USE JACOB RUPPERT KNICKERBOCKER	NY	G	
009	A-009-004	THE ISAAC LEISY BREWING CO. CLEVELAND, O. PHONES CUYAHOGA-ERIE 234 BELL-HARVARD 730	OH	VG	
010	A-009-017	SCHELL'S, DEER BRAND BEER, NEW ULM, MINN (TOE GROUND)	MN	G	
011	A-009-023	THE I LEISY BREWING CO CLEVELAND, O FINE BOTTLED BEERS	OH	EX	
012	A-009-999	DRINK WHISTLE BOTTLED ONLY BY JOHN FRIEDRICH PHILA. (TOE CUT OFF)	PA	G	
013	A-012-001	BURGERMEISTER A TRULY FINE PALE BEER / SHRINE VICTORY CONVENTION JULY 1946 SAN FRANCISCO	CA	VG	
014	A-015-002	BIRK BROS. BREW. CO. PHONE LINCOLN 496. CHICAGO / SUPERB BEER	IL	G	
015	A-015-016	ZAHRRINGER MALT PROD. CO. 514 12TH ST. MILWAUKEE WIS. FOSSCO MALT EXTRACT	WI	G	
016	A-015-019	FREMONT BREWING CO. DRINK PILSENER BEER	NE	G	
017	A-015-048	COOK'S BEER EVANSVILLE, IND. / GOLDBLUME	IN	G	
018	A-015-999	JOHN STANICK & CO. 32 OXFORD AVE. DUDLEY, MASS.	MA	G	
019	A-016-001	BLAKESLEE BROTHERS BEVERAGES	CT	VG	
020	A-017-039	LEISY BEER (EER IN LARGE B)	IL	G	
021	A-020-026	DRINK PHOENIX BEER-BUFFALO'S FAMOUS BREW	NY	VG	
022	A-020-027	SEBEWAING BREWING CO. OLD STYLE BEER	MI	G	
023	A-021-999	RE-ELECT FREEHOLDERS CURRY & LIEBERMAN THANKS!		M	
024	A-024-002	MILLER BREWING CO. MILWAUKEE, WIS., U.S.A. HIGH LIFE BEER (HIGH LIFE ON NECK LABEL)	WI	G	
025	A-028-002	CONSUMERS PRODUCTS CO. BROOKLYN, N.Y. / USE PILSER BRAND MALT & HOPS	NY	EX	
026	A-028-003	BOTTLED AT THE BREWERY BY THE DEPPEN BREWING CO. READING, PA. / QUEEN QUALITY.	PA	VG	
027	A-028-999	COMPLIMENTS OF LANDISVILLE HOTEL LANDISVILLE, N.J. FRED LEONELLI, PROP.	NJ	VG	

October 1997 JFO Auction-Closing November 19, 1997- Name & Mem #:

028	A-029-005	PABST BLUE RIBBON BREW / THE BREW THAT BRINGS BACK MEMORIES (REVERSE HAS STRAIGHT LETTERS)	WI	VG	
029	A-029-009	SCHLITZ (REST IN HANDBOOK)	WI	G	
030	A-029-013	MALT & HOPS 937 E. ANAHEIM ST. LONG BEACH / DRINK SHERRY MIST	CA	G	
031	A-029-014	POTOSI BREWING CO. POTOSI, WIS. / DRINK POTOSI BEER	WI	G	
032	A-029-999	GRANT'S SPRING EXPORT LAGER HAMILTON, ONT. ALE & PORTER (CANADIAN)		VG	
033	A-029-999	GOLDEN GATE SUPPLY CO. 441 CLAY S.E.	CA	G	
034	A-034-001	DO YOU DRINK GILT TOP OR JUST NEAR-BEER?	WA	EX	
035	A-035-018	WALLA WALLA BREWING CO. KLOSTER BRAU "IT'S THE BEER"	WA	PO	
036	A-035-037	(PIC OF INDIAN SHOOTING BOW & ARROW) (VERY WORN)		PO	
037	A-044-001	CREAM CITY BREWING CO. FAMOUS MILWAUKEE PILSENER BEER	WI	EX	
038	B-002-015	NATIONAL BREWING CO. SYRACUSE, N.Y. DERBY CREAM ALE	NY	G	
039	B-002-025	LUXUS THE BEER YOU LIKE	NE	G	
040	B-012-006	COMPLIMENTS OF LEMBECK & BETZ EAGLE BREWING CO. JERSEY CITY, N.J. / DRINK AMERICAN CLUB BEER	NJ	G	
041	B-013-058	TIP-TOP PRODUCTS COMPANY TIP-TOP MALT EXTRACTS / STORES: READING, SCRANTON, POTTSVILLE, LANCASTER, YORK	PA	EX	
042	B-013-090	"DOT'S VOT LOOIE USES" BLUE RIBBON MALT 222-224 DIAMOND ST. PITTSBURGH, PA.	PA	EX	
043	B-014-015	THE FRANKLIN BREWING CO. COLUMBUS, OHIO / ASK FOR "BENNIE"	OH	VG	
044	B-014-075	BERGHOFF FORT WAYNE / DRINK DORTMUNDER BEER	IN	G	
045	B-014-119	ALWAYS ASK FOR ZOLLER'S IT'S MELLOW DAVENPORT, IOWA.	IA	VG	
046	B-014-154	TIVOLI BREWING CO. DETROIT, MICH. / CALL FOR ALTES LAGER THE BEER IN THE GREEN BOTTLE	MI	VG	
047	B-014-999	WHITE LABEL BOTTLING CO. INC. BEVERAGES HARTFORD, CONN.	CT	EX	
048	B-014-999	THE BEER THAT MADE PRINCE ALBERT BREWERIES FAMOUS / DEMAND BOHEMIAN BEER MADE IN CANADA		EX	
049	B-015-005	DRINK GOLD BOND CREAM OF TABLE BEER	OH	EX	
050	B-017-004	CENTENNIAL BRWG. CO. BUTTE, MONTANA / CENTENNIAL BEER BEST IN BUTTE (BUTTE, MONTANA LETTERING WORN)	MT	G	
051	B-017-012	STROH'S BOHEMIAN BEER DETROIT MICH / AMERICA'S FAVORITE (VERY WORN)	MI	PO	
052	B-018-010	DRINK BUSHKILL LAGER / EASTON, PA.	PA	EX	
053	B-018-086	BADGER BRAND BEER	WI	VG	
054	B-018-104	DRINK GOLD BOND CREAM OF TABLE BEER	OH	VG	
055	B-018-129	WEISBROD & HESS PHILADELPHIA/DRINK PEACOCK BEVERAGES	PA	G	
056	B-018-203	FAMOUS NARRAGANSETT BEERS	RI	G	
057	B-018-326	COMPLIMENTS OF BELLINGHAM BAY BREWERY BELLINGHAM, WASH.	WA	VG	
058	B-018-376	DRINK "THE R.I.B." FAMOUS ROCK ISLAND BEER	IL	M	
059	B-018-387	DEMAND CARLING'S ALE LAGER & PORTER / REGISTERED BLACK LABEL RICE BEER (CANADIAN)		VG	
060	B-018-431	KEY TO THE FAMOUS -B. & O.- FREEPORT BEER	IL	G	
061	B-018-492	KEY TO ANGELES BREWING AND MALTING COMPANY'S PILSENER BEER (VERY WORN)	CA	PO	
062	B-018-568	PECHSTEIN & NAGEL CO. KEOKUK, IOWA / PURITAS	IA	EX	
063	B-018-999	CASCADE GINGER ALE		VG	
064	B-018-999	PRINCE ALBERT BREWERIES LIMITED / BOHEMIAN (CANADIAN)		G	
065	B-018-999	KEY TO CALGARY BEER (CANADIAN)		VG	
066	B-018-999	GOLDEN WEST BREWERY LTD. CALGARY ALTA. (CANADIAN)		VG	
067	B-018-999	SASKATOON BEER MADE IN CANADA		EX	

October 1997 JFO Auction-Closing November 19, 1997- Name & Mem #:

068	B-018-999	THIRSTY ESKIMO POP IT SATISFIES / SAME	PA	G	
069	B-018-UL	OREGON YEAST CO. 189 1/2-3RD ST. PORTLAND, ORE. MALT-HOPS-YEAST PHONE MAIN 1557	OR	VG	
070	B-019-007	DRINK DICK BROS' PILSENER BEER, QUINCY, ILL.	IL	VG	
071	B-019-026	ORDER NEEF'S GOLD BELT TEL. 1105 MAIN	CO	EX	
072	B-019-040	WILLOW SPRINGS BEVERAGE CO. OMAHA	NE	VG	
073	B-019-054	COMPLIMENTS OF MAIER BREWING CO. INCORPORATED LOS ANGELES U.S.A. / DRINK MAIER BEER	CA	VG	
074	B-019-106	KEY TO SCHREIBER BEER BUFFALO, N.Y.	NY	VG	
075	B-019-131	V.A. OSWALD ALTOONA, PA. OLD BULL STOUT	PA	EX	
076	B-019-229	DRINK BROADWAY BREWING CO'S PURE BEERS BUFFALO, N.Y.	NY	EX	
077	B-019-UL	KEY TO THE BEST BEVERAGE WHITE RIBBON CONSUMERS BREWING CO. / SAME		VG	
078	B-021-015	EVANS ALE HAS TRADE MARK ON CROWN CORKS	NY	G	
079	B-021-076	SCHLITZ IN BROWN BOTTLES / THE BEER THAT MADE MILWAUKEE FAMOUS	WI	VG	
080	B-021-150	CONSUMERS BREWING CO PENN BEER (BEER IN GRAIN STALK HEAD) PHILADELPHIA (VERY WORN)	PA	PO	
081	B-021-227	KEY TO BOHRER BREWING CO'S BEER INDIANA'S PRIDE (INDIANA'S PRIDE ALMOST WORN OFF OTHERWISE G)	IN	G	
082	B-021-236	CRESCENT BREWING CO. NAMPA, IDA. DRINK OVERLAND BEER	ID	G	
083	B-021-383	DRINK PACIFIC BEER BEST EAST OR WEST		G	
084	B-021-512	COMPLIMENTS OF BECKER BREWING&MALTING CO. OGDEN,UTAH.	UT	G	
085	B-021-999	KEY TO SARATOGA VICHY KING OF TABLE WATERS / KEEP YOUNG WHILE GROWING OLD	NY	VG	
086	B-021-999	POLAR GINGER ALE / SAME		VG	
087	B-021-999	SASKATOON BEER (CANADIAN)		VG	
088	B-021-999	THE PRESTO BOTTLE OPENER AND GAS TANK KEY		G	
089	B-022-004	FALSTAFF BOTTLED BEER / SAME	MO	G	
090	B-022-028	GRIESEDIECK BEV. CO. ST. LOUIS BUY HEK	MO	G	
091	B-022-047	"LEMP ST. LOUIS" / "EXTRA PALE BOTTLED BEER"	MO	G	
092	B-022-107	GLUEK BRG. CO. MINNEAPOLIS KEY TO "GLUEK ROOT BEER" "GLIX" BEVERAGE	MN	EX	
093	B-023-003	BLUMER'S SPECIAL BREW BEVERAGES	WI	VG	
094	B-023-016	DRINK KING OF CLUBS		EX	
095	B-023-018	MILLER HIGH LIFE BEER	WI	VG	
096	B-023-071	JUNG BEER		EX	
097	B-023-999	MEDICINE HAT BREWING CO. LTD. DRINK OLD FASHION LAGER (CANADIAN)		EX	
098	B-023-999	ADANAC BEER A BOTTLE OF GOOD TASTE (CANADIAN)		VG	
099	B-023-999	NO. 101 BOTTLE OPENER LOUIS F. DOW CO. SAINT PAUL	MN	VG	
100	B-023-999	BUMBERNICK'S GULF STATION		VG	
101	B-023-999	COMPLIMENTS OF THE OWL DRUG CO.		VG	
102	B-024-003	BERLIN BREWING CO. (VAR (A) LARGE LETTERS)	WI	VG	
103	B-024-009	DAWSON'S ALE & LAGER / TWO ROYAL BREWS	MA	G	
104	B-024-017	GRIESEDIECK BROS. ST. LOUIS	MO	EX	
105	B-024-023	MATHIE-RUDER BREW. CO. WAUSAU WISCONSIN ENJOY RED RIBBON & GOLD STAR BEER	WI	VG	
106	B-024-030	RAINIER ALE / RAINIER BEER	CA	EX	
107	B-024-035	WALTER BREWING CO. COLORADO & WISCONSIN / WALTER'S PILSENER BEER		EX	

October 1997 JFO Auction-Closing November 19, 1997- Name & Mem #:

108	B-024-044	G. HEILEMAN BREWING CO. LACROSSE, WIS. OLD STYLE LAGER	WI	VG	
109	B-024-093	DRINK EDELWEISS BEER A CASE OF GOOD JUDGMENT	IL	EX	
110	B-024-094	EXTRA PALE ALE BAVARIAN STOUT / PILSNER (IN BANNER)		EX	
111	B-027-001	DRINK MILLER HIGH LIFE BEER MILWAUKEE (BRASS)	WI	G	
112	B-031-999	PREST-O-LITE TANK KEY CROWN OPENER SCREW DRIVER / NO. 110 MFG BY WILLIAMSON CO. NEWARK, N.J.	NJ	VG	
113	B-035-004	STORZ BEER / SAME	NE	VG	
114	B-035-005	BLUE RIBBON PRODUCTS CO. READING-POTTSVILLE-LANCASTER YORK / TIP TOP MALT SYRUP HOME BEVERAGE SUPPLIES	PA	VG	
115	B-035-016	QUINALT PRODUCTS CO. PHONE 55 ABERDEEN	WA	G	
116	B-035-999	HOUSE OF BOTTLES BISMARCK, N.D.	ND	G	
117	B-035-999	GREAT FALLS BOTTLERS SUPPLY CO. A COMPLETE LINE OF BOTTLERS SUPPLIES 107-109 4 TH ST. SO. PHONE 9997	MT	VG	
118	B-042-003	STORZ BREWING CO. OMAHA (REST IN HANDBOOK)	NE	VG	
119	C-001-003	P. SCHOENHOFEN BREWING CO, CHICAGO EDELWEISS BEER (CASE OF BEER) A CASE OF GOOD JUDGMENT	IL	G	
120	C-011-016	GENERAL BREWING CORPORATION LUCKY LAGER LUCKY LAGER DATED BEER / SAME	CA	EX	
121	C-011-017	GENERAL BREWING CORPORATION LUCKY LAGER LUCKY LAGER BONDED BEER / SAME	CA	VG	
122	C-011-027	GENERAL BREWING CORPORATION LUCKY LAGER LUCKY LAGER PLAINLY AGE DATED / SAME	CA	VG	
123	C-012-063	SIMON PURE ALE AND BEER	NY	VG	
124	C-012-165	THE TACOMA BREWING CO SAN FRANCISCO, CAL. / 5 1/2% TACOMA BEER EAST OR WEST (BOTTLE)	CA	VG	
125	C-012-999	CANADA DRY / SAME		VG	
126	C-013-056	HAMM'S SMOOTH MELLOW BEER	MN	VG	
127	C-013-109	THE STANTON BREWERY INC. TROY, N.Y.	NY	M	
128	C-013-LOT	#66 KRUEGER (NJ) #71 MILLER (WI) #90 PASST (WI) #107 STANDARD (NY)		VG	
129	C-015-LOT	#10 SCHAEFER #16 RHEINGOLD	NY	VG	
130	C-017-999	{SODA} {1}BUBBLE UP {VG} {2}BUBBLE UP {G} {3}GREEN SPOT {G} {4}O-SO GRAPE {G} {5}DRINK SQUIRT {G}			
131	C-018-999	{SODA} {1}WHITE ROCK BEVERAGES {2}TOWNE CLUB BEVERAGES		G	
132	C-019-999	{SODA} {1}DR SWETT'S ROOT BEER {2}O-SO BEVERAGES {PO} {3}DRINK SQUIRT {G}			
133	C-020-016	GENESEE BEER AND ALE GENESEE LIEBOTSCHANER GENESEE 12 HORSE ALE	NY	G	
134	C-023-001	JACKSON BREWING CO. N.O. LA. DRINK JAX BEST BEER IN TOWN / SAME	LA	VG	
135	C-034-999	ENJOY SQUIRT		EX	
136	C-036-999	SHEA'S WINNIPEG BREWERY (CANADIAN)		VG	
137	C-036-999	NORTH WEST BREWING CO. LTD. EDMONTON		EX	
138	C-999-999	{SODA} {1}C-13 FAYGO BEVERAGES DETROIT {G} {2}C-TYPE PACKMAN'S 1926 MEDAL WATERS {PO} {3}C-9 HUSTINGS SOFT DRINKS {PO} {4}C-13 CLOVERDALE SOFT DRINKS {G}			
139	D-003-999	U.B. BEER / (CHINESE CHARACTERS) (FOREIGN)		VG	
140	D-003-999	{1} CANTRELLS / GINGER ALE {2} SCHWEPPE'S {3} GOLDWELL / APPLE JUICE {1&3} HAVE BRITISH PATENT NUMBER		G	
141	D-004-006	LEISY'S / SAME (VAR (B) CURLED OPENER END)	IL	VG	
142	D-005-004	COOK'S BEER	IN	VG	
143	D-009-001	CHIEF OSHKOSH	WI	VG	
144	D-009-011	ZOLLER'S BEER / SAME	IA	VG	
145	D-012-009	MAIER / SELECT	CA	G	
146	E-002-023	BECKER BREWING & MALTING CO./BECKER'S UNITY CLUB BEER	WY	EX	

October 1997 JFO Auction-Closing November 19, 1997- Name & Mem #:

147	E-003-034	HORNUNG'S PHILA. WHITE BOCK BEER / HORNUNG'S PHILA. LONDONDERRY ALE	PA	G	
148	E-003-045	CALIFORNIA BRG. ASS'N. ACME BEER / SAME	CA	EX	
149	E-003-055	TIP A "TOPPER" TOPPER BEER / SAME	NY	VG	
150	E-004-005	DRINK ARROW BEER / IT HITS THE SPOT (IN ARROW)	MD	VG	
151	E-004-006	ATLANTIC BREWING CO. / TAVERN PALE BEER	IL	VG	
152	E-004-009	ATLAS B'R'G. CO. CHICAGO CANAL 6200 / IMPORTED QUALITY REGULAR PRICE PRAGER BEER	IL	VG	
153	E-004-014	BLATZ MILWAUKEE / DRINK OLD HEIDELBERG BREW	WI	G	
154	E-004-015	BUCKEYE BEER PICKS YOU UP/KRAUESEN BREWED- -AS OF OLD	OH	VG	
155	E-004-017	BURGERMEISTER BEER / GOLDEN STATE BEER	CA	G	
156	E-004-021	CENTLIVRE BRG. CORP. FORT WAYNE / NICKEL PLATE BEER	IN	G	
157	E-004-025	DRINK COORS GOLDEN BEER / SAME (VAR {B} SQUARE HEAD)	CO	VG	
158	E-004-028	DICK BROTHERS BREWING COMPANY / DRINK DICK'S BEER	IL	G	
159	E-004-031	DOELGER'S MALT BREWS / SAME	NY	VG	
160	E-004-033	FALLS CITY BREWING CO. LOUISVILLE, KY./FALLS CITY BEER	KY	VG	
161	E-004-040	GOLDEN WEST BREWING CO. OAKLAND-SAN FRANCISCO-LOS ANGELES / GOLDEN GLOW BEER	CA	G	
162	E-004-048	HUMBOLDT BEER / SAME	CA	VG	
163	E-004-049	INDEPENDENT MILWAUKEE BREWERY / BRAUMEISTER BEER	WI	EX	
164	E-004-050	MANITOWOC PRODUCTS CO. MANITOWOC, WIS./KINGSBURY PALE	WI	VG	
165	E-004-051	KOEHLER'S BEER / SAME	PA	VG	
166	E-004-057	MANHATTAN BRG. CO. CHICAGO, ILL. / OLD MANHATTAN LAGER BEER	IL	EX	
167	E-004-061	MILLER HIGH LIFE BREW / MILLER HIGH LIFE SYRUP	WI	VG	
168	E-004-064	NEUSTADTL BREWING CORP. STROUDSBURG, PA. / DRINK "GESUNDHEIT" BEER	PA	G	
169	E-004-065	LOUIS F. NEUWEILER'S SONS ALLENTOWN, PA. / NEUWEILER'S BEER	PA	VG	
170	E-004-068	PRIMA BEER / CHICAGO PHONE MOHAWK 2300	IL	G	
171	E-004-071	RAINIER BREWING CO., INC. SAN FRANCISCO, CAL. / DRINK RAINIER BEER	CA	VG	
172	E-004-072	REGAL AMBER BREWING CO. / REGAL AMBER-LAGER BEER (VAR {A} HYPHEN)	CA	VG	
173	E-004-072	REGAL AMBER BREWING CO. / REGAL AMBER LAGER BEER (VAR {B} NO HYPHEN)	CA	PO	
174	E-004-075	ROCHESTER BREWING CO. / OLD TOPPER ALE	NY	G	
175	E-004-076	JACOB RUPPERT BREWER-NEW YORK / ORDER KNICKERBOCKER BY THE CASE	NY	VG	
176	E-004-088	GEO. F. STEIN BREWERY, INC. BUFFALO, N.Y. / STEINS DRY HOP ALE AND PILSENER BEER	NY	VG	
177	E-004-091	THE TACOMA BREWING CO. SAN FRANCISCO, CAL. / DRINK TACOMA BEER	CA	VG	
178	E-004-095	WEHLE MULE HEAD ALE / WEHLE OX HEAD BEER	CT	VG	
179	E-004-100	AETNA BREWING CO. HARTFORD, CONN./SPECIAL DINNER ALE	CT	G	
180	E-004-102	ATLAS B'R'G. CO. CHICAGO CANAL 6200/DRINK ATLAS BEER	IL	VG	
181	E-004-105	CALIFORNIA BREWING ASS'N SAN FRANCISCO-LOS ANGELES / ACME BEER	CA	G	
182	E-004-126	LUCKY X LAGER/ONE OF THE WORLD'S REALLY FINE BEERS X	CA	VG	
183	E-004-136	REGAL AMBER BREWING CO. / REGAL PALE DELUXE	CA	G	
184	E-004-137	THE GEO.J. RENNER BREW.CO. AKRON, OHIO/GROSSVATER BEER	OH	VG	
185	E-004-150	TROMMER'S MALT BREWS / SAME	NY	G	
186	E-004-154	JOHN WIELAND BREWERY / WIELAND'S BEVERAGES	CA	PO	

October 1997 JFO Auction-Closing November 19, 1997- Name & Mem #:

187	E-004-180	MILWAUKEE BREWERY OF S.F. / GOLDEN STATE BEER (VAR (B) 'OF' BEFORE S.F.)	CA	G	
188	E-004-199	TROMMER'S MALT BEERS / SAME	NY	EX	
189	E-004-247	HOLLER FOR ZOLLER / DAVENPORT, IOWA	IA	VG	
190	E-004-277	THE JOHN EICHLER BREWING CO. NEW YORK CITY, N.Y. / EICHLER'S BEER	NY	G	
191	E-005-009	HYDE PARK 75 THE DIAMOND JUBILEE BEER	MO	EX	
192	E-006-140	JENNER SPRINGS BRG. CO. BOB'S BEER	PA	VG	
193	E-006-UL	NORTHERN BREWING CO. WATERTOWN, N.Y. / WATERTOWN LAGER CREAM ALE	NY	VG	
194	E-008-999	GEO. F. HEISE. CLOVERDALE, N.Y. / SAME	NY	G	
195	E-009-066	DRINK WALTER'S GOLD LABEL BEER / SAME	CO	VG	
196	E-009-091	GRAND PRIZE LAGER BEER / SAME	TX	VG	
197	E-013-004	ECKERT'S BEER TEL. CAPITOL 6111 / WINS ANY TEST OF TASTE	CA	EX	
198	E-014-114	GOLDEN WEST BREWING CO. OAKLAND, CALIF. / GOLDEN GLOW BEER AND ALE	CA	VG	
199	E-014-267	SOUTHERN SELECT BEER / SAME	TX	VG	
200	E-014-319	BECKER BREWING & MALTING CO. (COPPER)	WY	EX	
201	E-014-334	BUFFALO BEER BUFFALO BEER / SAME	CA	G	
202	E-014-378	HAMPDEN BREWING CO. / HAMPDEN ALE	MA	VG	
203	E-014-380	HILLSBORO PALE HILLSBORO PALE	WI	G	
204	E-014-456	DRINK WAUSAU BREWING CO. BEER / SAME	WI	VG	
205	E-014-462	BECKER'S MELLOW BEER (COPPER)	WY	EX	
206	E-014-575	WHITE CROWN BEER & ALE	OH	G	
207	E-014-638	SICK'S SELECT BEER SICK'S SELECT BEER	MT	VG	
208	E-014-645	TAMPA FLORIDA BREWERY, INC. TROPICAL BEER & ALE/SAME	FL	VG	
209	E-014-739	FESSENMEIER BREWING CO. HUNTINGTON, W.VA. / WEST VIRGINIA BEER-ALE	WV	VG	
210	E-014-745	RENNER YOUNGSTOWN, O. / BEER-ALE PHONE 44467	OH	VG	
211	E-014-LOT	#1 ABC #309 ACME #4 ACME #5 ACME #6 ACME	CA	G	
212	E-014-LOT	#37 BURGERMEISTER(PO) #352 EASTSIDE(G) #68 EASTSIDE (G) #69 EASTSIDE(G) #100 GB(G) #113 GOLDEN GLOW(EX)	CA		
213	E-014-LOT	#73 EL DORADO (EX) #228 RAINIER (EX) #429 REGAL (G) #235 REGAL (G) #292 VERNON (VG) #301 WIELAND-B (EX)	CA		
214	E-014-LOT	#356 FALSTAFF (VG) #357 FALSTAFF (VG) #109 GOETZ (VG) #225 POTOSI (EX) #295 WALTER (G) #455 WALTER (G)			
215	E-016-001	MILWAUKEE BR'Y. OF S.F. GOLDEN STATE BEER. (OFF STAMPED, F. DOES NOT SHOW IN S.F.)	CA	G	
216	F-002-002	BLATZ PILSENER BEER	WI	VG	
217	F-002-020	"DRINK AMERICAN DRY"	NY	VG	
218	F-002-033	MISSOULA BREWING CO. / MISSOULA HIGHLANDER BEER	MT	VG	
219	F-002-052	BLUE MOUND BEER DEPOT 515 N. 59TH.-BL-3100		EX	
220	F-011-001	CLEVELAND & SANDUSKY BREWING CO. GOLD BOND BEER HARVARD 1400 CENTRAL 3933	OH	G	
221	G-001-015	HAZELTON PILSENER BEER	PA	VG	
222	G-001-025	TRU-BLU BEER & ALE	PA	EX	
223	G-004-003	FREDERICK'S BREWERY	IL	VG	
224	G-009-003	DAEUFER'S BEER "ALLENTOWNS FAVORITE" (RED ON YELLOW)	PA	VG	
225	G-009-074	KESSLER BREWING CO. (BLACK ON GREEN)	MT	VG	
226	G-009-080	SCHIEDT'S VALLEY FORGE BEER (WHITE ON RED)	PA	EX	

October 1997 JFO Auction-Closing November 19, 1997- Name & Mem #:

227	G-009-999	FRESH UP 7UP		PO	
228	G-027-001	BUD LIGHT (ON NECK LABEL) BUD LIGHT (LABEL) / EVERYTHING ELSE IS JUST A LIGHT	MO	M	
229	H-001-001	BEVERWYCK BEERS AND ALES	NY	VG	
230	H-001-006	NEUWEILER'S "FAMOUS BREWS"	PA	G	
231	H-001-016	NATIONAL BEER BALTIMORE, MARYLAND TASTES IMPORTED	MD	G	
232	H-001-018	NORTON'S BEER	IN	VG	
233	H-002-999	DRINK NU-GRAPE (BOTTLE) A FLAVOR YOU CAN'T FORGET		EX	
234	H-008-LOT	#13 TAVERN PALE #14 PABST		VG	
235	I-007-001	ACME BREWING CO. LOS ANGELES ACME BEER AND ALE	CA	VG	
236	I-007-002	FOR OPENING ACME BEER KEGLET	CA	VG	
237	I-007-007	HANDY WAY TO ORDER BALLANTINE'S ALE-BEER (HAND & 3 RINGS)	NJ	EX	
238	I-007-009	FOR OPENING BROWN DERBY BEER CANS OR BOTTLES	CA	VG	
239	I-007-014	FEIGENSPAN P.O.N. BEER&ALE FEIGENSPAN P.O.N. BEER&ALE	NJ	G	
240	I-007-999	DRINK WON-UP		EX	
241	I-007-999	DOLE PINEAPPLE JUICE		G	
242	I-007-999	DR PHILLIPS ORLANDO, FLA. PURE ORANGE-GRAPEFRUIT AND BLENDED JUICES	FL	G	
243	I-008-001	PETER FOX BREWING CO. CHICAGO	IL	VG	
244	J-007-002	COORS BEER GOLDEN, COLO.	CO	EX	
245	L-001-007	SCHLITZ	WI	EX	
246	L-002-001	ANHEUSER BUSCH (EAGLE IN A) (VAR(A)EAGLE WINGS CLOSED)	MO	VG	
247	M-001-002	HAFFENREFFER BOSTON ASK FOR PICKWICK ALE "ALE THAT IS ALE" / SAME	MA	EX	
248	M-001-015	LYON & SONS BREWING CO. NEWARK, N.J. EDELWILD BEER ('EDELWILD BEER' ON BOTTLE)	NJ	G	
249	M-001-023	OLD COLONY BREWING CO. BOSTON. PRINCE OF PILSEN BREW FAMOUS ON TWO CONTINENTS. / SAME	MA	VG	
250	M-003-004	DAEUFER-LIEBERMAN BREWERY/DRINK DAEUFERS BEER SINCE 1848/ALLENTOWN'S FAVORITE/MADE IN ALLENTOWN, PA. (YELLOW)	PA	EX	
251	M-003-005	EDELWEISS BEER (SMALL/SCRIPT GREEN)	IL	G	
252	M-003-007	GUNTHER'S "THE WORD FOR QUALITY BEER" / BREWERS SINCE 1881 / BALTIMORE, MD. (RED)	MD	EX	
253	M-003-012	THE GERMAN BREWING CO. / CUMBERLAND, MD. / THE ORIGINAL OLD GERMAN BEER (RED/OTT)	MD	VG	
254	M-003-014	PIEL'S FINE LAGER BEERS / ESTABLISHED 1883 / BROOKLYN, N.Y. (RED)	NY	M	
255	M-003-017	SCHORR-KOLKSCHNEIDER BREWING CO. / S-K LAGER BEER / HEALTHFUL AND REFRESHING (BLUE)	MO	G	
256	M-006-999	FROM CARLO'S 130 LIEBESDORFF SAN FRANCISCO / SEASON'S GREETINGS	CA	G	
257	M-015-999	FEDERAL FEDERAL DIE CAST / CHICAGO 60614	IL	VG	
258	M-017-001	BUDWEISER KING OF BEERS	MO	M	
259	M-019-005	AUGUST A. BUSCH JR. (SIGNATURE) / 1968 SALES CONVENTION (EAGLE IN A)	MO	EX	
260	M-021-001	RAINIER STERLING	WA	VG	
261	M-030-004	GEO. WALTER BREWING CO. APPLETON, WIS. GEO. WALTER'S ADLER BRAU 100	WI	EX	
262	M-031-001	MELLOW STERLING BEER	IN	VG	
263	M-033-001	DREWRY'S BEER / BIG D	IN	VG	
264	M-066-001	SCHLITZ (LOGO)	WI	VG	
265	M-999-LOT	M-11-2 BALLANTINE M-12-1 BALLANTINE	NJ	VG	

October 1997 JFO Auction-Closing November 19, 1997- Name & Mem #:

266	N-006-001	LEMBECK & BETZ EAGLE BREWING CO. JERSEY CITY, N.J. / DRINK "AMERICAN CLUB" BEER MADE BY (MINIMUM BID \$75)	NJ	G	
267	N-009-010	ESSLINGER'S, INC. PHILADELPHIA, PA. ESSLINGER'S PREMIUM BEER	PA	EX	
268	N-011-001	FORT PITT BEER	PA	G	
269	N-012-001	BECK'S BEER	NY	VG	
270	N-050-003	MUEHLEBACH PILSENER SINCE 1868	MO	VG	
271	N-075-001	HAMM'S BEER SEASONS GREETINGS HARRY FRAHM	MN	M	
272	O-002-002	COLUMBIA BREWING CO. ST. LOUIS, MO. ALPEN BRAU BEER	MO	G	
273	O-002-012	HIGHLANDER-SCHMIDT'S DILLON BEVERAGES CANDY AND TOBACCO PHONE 154-W DILLON BOTTLING WORKS		VG	
274	O-003-001	VALLEY FORGE BEER	PA	EX	
275	O-005-005	GRAND PRIZE LAGER BEER	TX	VG	
276	O-006-002	BURGERMEISTER A TRULY FINE PALE BEER	CA	VG	
277	O-009-001	STEGMAIER GOLD MEDAL BEER WILKES-BARRE, PA.	PA	VG	
278	P-008-044	AMERICAN BREWING ASS'N HOUSTON, TEXAS / SAME	TX	G	
279	P-008-105	ACME BREWING CO. BREWERS & BOTTLERS OF FINE BEERS MACON, GA. U.S.A. / AMERICAN QUEEN	GA	G	
280	P-999-LOT	P-009-011 TOSETTI (PO) P-010-038 MAIER (PO) P-051-003 BUFFALO (PO) P-057-010 BLATZ (PO)		PO	
281	Q-008-014	MICHELOB LIGHT BEER	MO	EX	
282	R-003-002	IROQUOIS BEV. CORP (WRITING WORN OFF)	NY	G	

JFO Member Dave Gausepohl otherwise known as "Beer Dave"

*Great Places for Great Beer***108 Brands of Belgian Beers in Northern Kentucky?**

Not really surprising when you begin to investigate the history of the region and the personalities responsible for establishing BrewWorks at the Party Source - Kentucky's largest retailer of beer.

At the close of the American Civil War the Cincinnati and Northern Kentucky area was the third largest brewing center in the U.S. - only surpassed by two other areas also strongly influenced by German immigration, Milwaukee and St. Louis.

The Ohio River area was home to many names that are still familiar today: Hudepohl, Schoenling, Heideberg, Wiedemann and Bavarian to name a few. The BrewWorks at the Party Source now occupies the old Bavarian Brewery. There is a local rumor that Jim Koch's relatives started the Koch family brewing tradition by working at the Wiedemann Brewery which was opened by George Wiedemann in Newport, Kentucky in 1870.

Ken Lewis, an innovative liquor retailer who started in the Louisville area and has gained a reputation for his attention to employees, to a risk and opened the first Party Source in Belle Vue, Kentucky in 1993. After its great success, the next move was to renovate a hundred year old brewery and creatively expand. The result is an impressive establishment, which opened in late 1996, at 115 Main Street in the middle of historic Covington, Kentucky. The complex now houses the Party Source, a mega food/liquor/everything for a party store, the BrewWorks, a brewery/restaurant/multi level bar, and, opening in June 1997, an on premise U-Brew facility. Ken, never one to rest on his laurels, plans to expand into the Louisville market next.

To Ken's credit he found a local who had already established himself in the beer industry by the age of 32 - Dave Gausepohl - a.k.a. "Beer Dave". Dave says, "since childhood, the only thing I ever wanted to do was to be involved in the beer business." His life bears this out: he started collecting beer memorabilia in grade school - now the collection stands at 400,000 items, he worked the "breaker pile" at distributors during high school, became an avid home brewer, after waiting till he was a legal 21, started as Brewer at Kentucky's own Oldenberg Brewery and ended nine years later as Special Projects Coordinator. In 1993 he went to work for Ken and set up the beer department at the first Party Source in Belle Vue. He personally has visited over 600 breweries and proudly boasts that he has sampled over 6000 different beers. Truly - a man born to sell beer.

Currently the Party Source handles 1200 brands of beer: 412 Micros, 219 English, 168 German and 108 Belgian brands with more coming each day.

Dave estimates that his customers are 55% from Greater Cincinnati, 30% from Kentucky, and the remaining 15% are like the bus loads of beer geeks who make pilgrimages from Mississippi every few months and purchase around 10 assorted cases each.

The current trend that Dave has noticed is the recent interest in authentic English ales, he attributes this to the increasing number of new home brewers who start by brewing ales. He also sees an increased interest in "big beers" i.e.

barley wines, doppelbocks and any new Belgian products which Dave sees as "pure exploration." Also there is a renewed interest in seeking authentic micro-brewed beer.

There are numerous things that Dave is proud of, primarily their commitment to make the Party Source an arena for beer experimentation. They want to lead the charge in increasing the public's all around knowledge of beer and the diversity that the beer world contains. Single bottle purchases are encouraged to invite beer exploration. Dave's highly trained staff is eager to answer any question - no matter how basic or complex. All beer is listed on a touch screen interactive computer kiosk, whose software was developed and now owned by the Party Source. Mandatory rotation is paramount to insure quality. Dave also suggested incandescent lighting in the areas devoted to beer, instead of the usual fluorescent lights which are harmful to beer.



"Beer Dave"

The Party Source is located at 121st street & I-75 in Covington, Kentucky

by Aldo Mastro - staff writer

Buy your favorite six pack of beer and help the community?

JUST FOR OPENERS

20TH ANNUAL CONVENTION REGISTRATION
APRIL 22-26, 1998

HOTEL CALIFORNIAN
405 Taylor St
San Francisco, CA 94102
1-800-346-5784

(Rate is \$80.00/Single/Double \$90.00/Triple/Quad) (No Charge for Children under 12)
(Motel has 17 Floors and Guaranteed Reservation must be made 1 month prior to Convention)

(Tell them you are with the Just For Openers Group)

MAKE SAN FRANCISCO YOUR NEXT STOP ON THE JFO CONVENTION TRAIL.

MEMBER REGISTRATION FEE - **\$40.00**
(INCLUDES HOSPITALITY ROOM, CONVENTION OPENER & ONE SHOW TABLE)

NAME _____

ADDRESS _____

CITY _____ STATE(PROVINCE) _____ ZIP _____

EVENING PHONE NUMBER _____

DATE YOU WILL ARRIVE _____ APPROXIMATE TIME _____

DATE YOU WILL LEAVE _____ (NEED TO KNOW FOR PLANNING PURPOSES)

HOW WILL YOU ARRIVE? CAR _____ PLANE _____ TRAIN _____ OTHER _____

NAME(S) FOR CONVENTION BADGE: _____

MAKE CHECKS PAYABLE TO YOUR CONVENTION HOST (John Cartwright) FOR 1998

John Cartwright
950 Marlene St Apt B
Ukiah, CA 95482-7446
PHONE (707) 463-0955

***** BRING A DISPLAY !!! *****

San Francisco, CALIFORNIA

April 22-26, 1998

The Place to be for *Camaraderie,* *Openers &* *Corkscrews*

Contact John Cartwright