

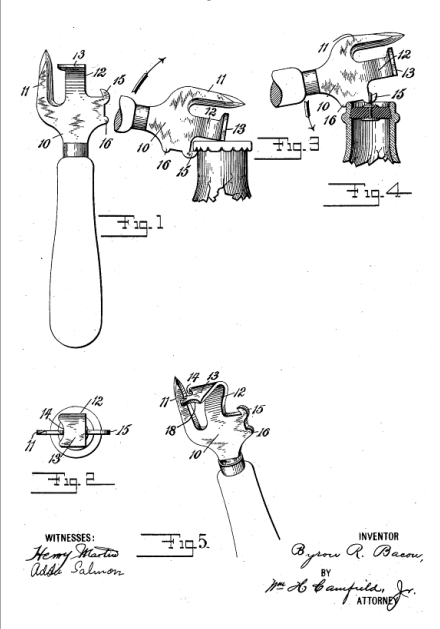
Just For Openers January-December 2026 1

Bacon's Bull-Dog vs. Taylor's Yankee

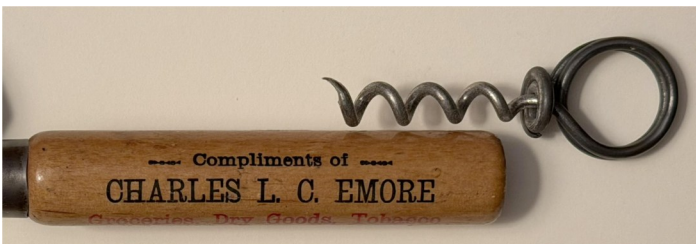
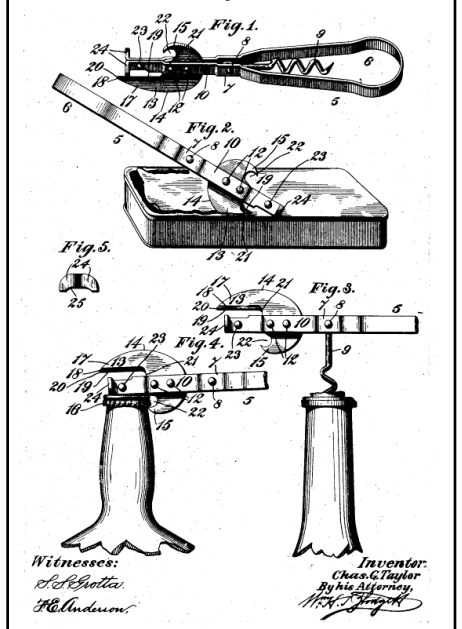
By Don Thornton

The BULL-DOG came first in 1902 followed by the YANKEE in 1906. There was a connection, but what the heck was it? Byron B. Bacon of South Orange, New Jersey, was granted Patent No. 692,045 on January 28, 1902 for a "can or bottle opener" that became the BULL-DOG. The just under 6 1/2-inch combo opener with wood handle is marked **BULL-DOG TEMPERED** at the blade cutter rivets. Some versions have a handle pull-out corkscrew.

Jan. 28, 1902. B. R. Bacon 692,045
CAN OR BOTTLE OPENER
Filed Sept. 24, 1901



Dec. 25, 1906. C. G. Taylor 839,229
COMBINATION TOOL
Filed July 11, 1906



***Just For Openers* January-December 2026 2**

Bacon's Bull-Dog vs. Taylor's Yankee

By Don Thornton

Charles G. Taylor of Hartford, Connecticut, was granted Patent No. 839,229 on December 25, 1906 for a "combination tool," an all-metal combination can, bottle opener and corkscrew. The 5 ½-inch combo is marked: **YANKEE CAN & BOTTLE OPENER**. At least two versions of the opener with different markings were produced by the Taylor Manufacturing Company of Hartford.



What's the connection? The Yankee is marked: **JAN. 28**

-02 DEC. 25-06 – Bacon and Taylor patent dates. The simple explanation is that Taylor's company produced

both openers with Taylor incorporating some aspect of Bacon's patent into his opener. However, there is no evidence the two men ever knew each other and an examination of the two patents shows very different designs although there is a hint of a similarity in the main punch cutters of the two tools.

In fact, Bacon's patent shows that one piece of solid metal was used for the opener but by the time it made it to market it was two pieces with the cutter and bottle opener hook riveted to the main stem, the same as the Yankee. In his 1902 patent Bacon warned that changes would probably be made, writing: "I may change slightly my arrangement of parts without going beyond the limits of my invention and not confine myself to the arrangements shown."

Both men were inventors with Bacon being granted at least seven patents and Taylor at least six. Bacon's patents, in addition to his can opener, included a water closet cistern, a coffee bin and a bread knife. Taylor's patents, in addition to his combo tool, included a device for securing door locks, a lathe attachment and a pocket size combo key ring, cigar cutter and screwdriver.

The book *New York, 1894 Illustrated* gave the following background on Bacon: A native of Buffalo now residing in South Orange, Bacon helped form Bacon, Jones & Company in New York City in 1891 at 181 Broadway. The real estate firm "makes a specialty of handling" properties in New Jersey, Long Island and New York City. It also acts as "general contractors for the building of business blocks, swellings, etc." There was no mention of Bacon's inventions.

As for background on Taylor there is no public information readily available. Based on internet auction sites, the Yankee was far more popular than the Bull-Dog. Trade magazine advertisements in 1909 listed the retail price of the combo tool at 10 cents and promised "opens anything."

"YANKEE" Can and Bottle Opener OPENS ANYTHING



Pat. Jan. 28, '02, and Dec. 25, '06

Removes Tin Caps, Pulls Corks, Opens Cans

TAYLOR MFG. CO., HARTFORD, CONN.

Just For Openers January-December 2026 3

Bacon's Bull-Dog vs. Taylor's Yankee

By Don Thornton

A New 10 CENT LEADER

Pat. Jan. 28, 1902, & Dec. 25, 1906.



**"Yankee" Can and Bottle Opener
OPENS ANYTHING**

This is only one of our Leaders in the line of small Hardware Specialties. Send for catalogue and lowest prices.

TAYLOR MFG. CO.
HARTFORD, CONN.



Pulls Corks
Opens Cans

