

John Hasselbring

By Don Bull



John Hasselbring was born June 16, 1864 in Germany. He arrived in the port of New York on March 19, 1883. He was listed in the 1888-9 Brooklyn City Directory as a gold beater at 252 Humboldt. In later directories, he was listed as a silversmith.

In 1894, Jeremiah Lott, Otto T. Schmidt and John Hasselbring formed a partnership to make fine gold and silver novelties for canes and umbrellas. They occupied a 75' x 100' floor at 112-116 Walker Street, New York City.

Hasselbring became a U. S. citizen at the Kings County Court on June 13, 1896 while living at 766 Hart St in Brooklyn.

On March 26, 1897, the Lott, Schmitt and Hasselbring partnership was dissolved. The business continued under the name of Jerimiah Lott. Ten days later Lott announced he had taken in Schmitt as a partner and named the business Lott & Schmitt.

Hasselbring began his business in his own name on June 18, 1897. His silversmith business was located at 139-141 Elm Street.

On March 1, 1906, Hasselbring filed for a patent on his bottle opener design.

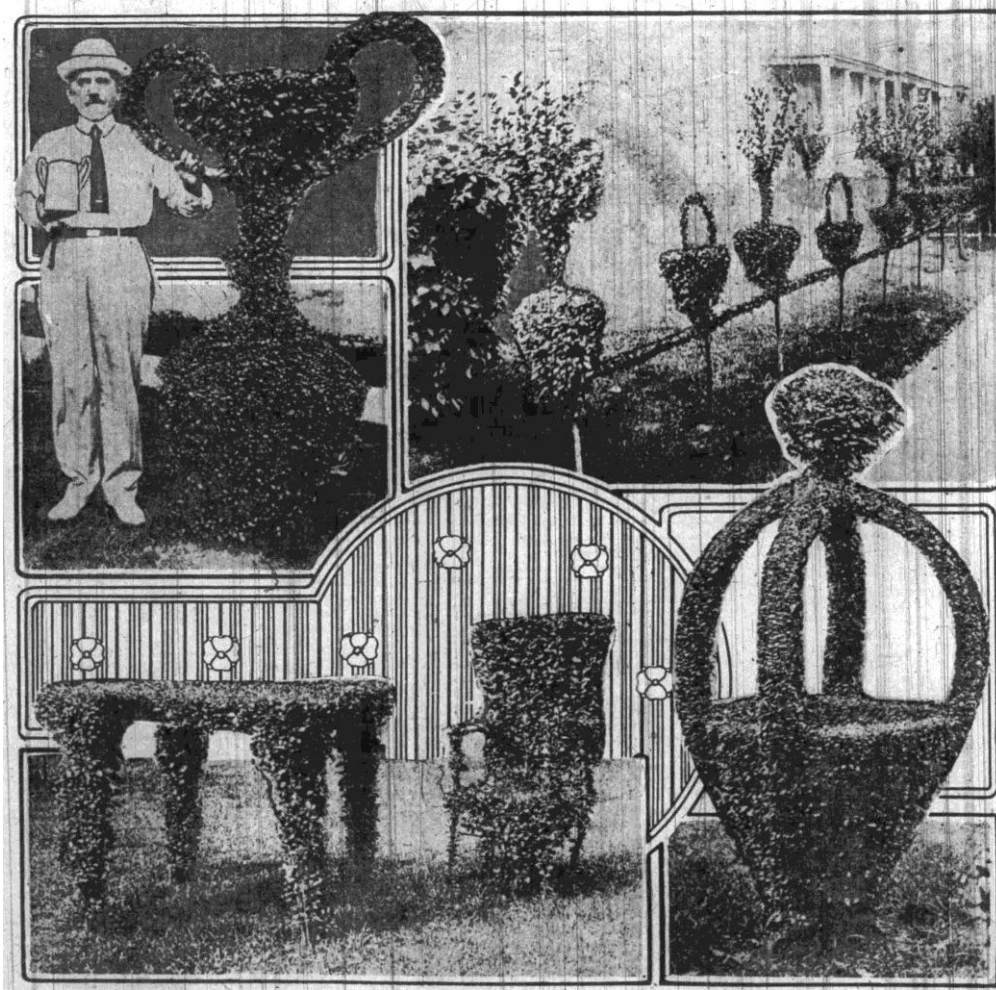
On April 21, 1910, the John Hasselbring Manufacturing Company of Brooklyn was incorporated in the state of New York with a capital of \$75,000 (over 2.5 million 2026 dollars). The directors were Dr. Charles Ermentraut, Gertrude Hasselbring and Herbert E. Reich.

By 1914 John's business had moved to 1143 DeKalb Avenue, Brooklyn.

In the 1930 U S Federal Census for Queens, New York, 66 year old Hasselbring's occupation is listed as gardener for a private family.

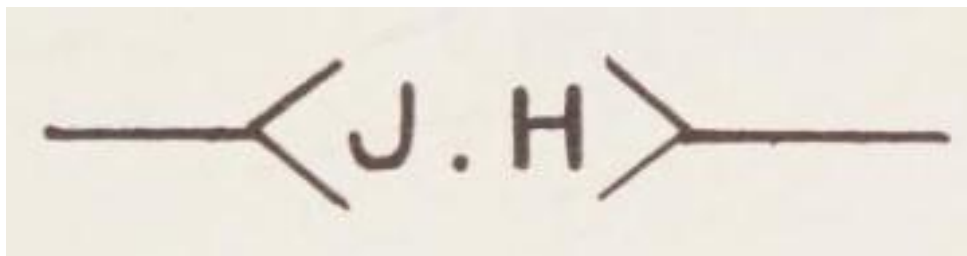
John died November 13, 1946.

Hasselbring's company was taken over by Crown Silver Company. Crown silver also bought Revere Silver, Woldfenden Silver, and the dies of Arnston Silver Company. Crown closed in 1960.



The image on the first page is an AI enhanced photo from this collage that appeared in the May 28, 1916 edition of *The Times-Picayune*, New Orleans with an article headlined "Remarkable Lawn Sculptures are created by Brooklyn man." The reporter discusses how John Hasselbring transformed his shrubbery at 167 Vanderveer Place, Brooklyn Manor, to make replicas of products of his workshop. John had spent several years experimenting with the California privet shrubs and shaping them into a loving cup like the one next to him as well as rings, cups, baskets and furniture. The story went viral and was published in newspapers nationwide.

Hasselbring sold his home and garden to state Senator Hasenpflug in June, 1916.



Hasselbring's trademark of April 30, 1907.



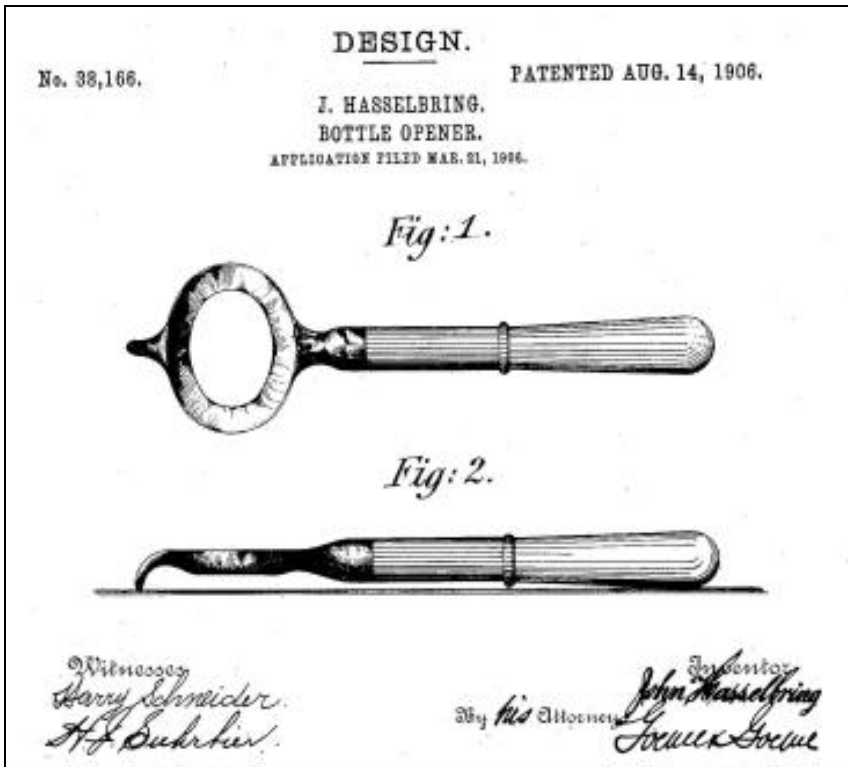
An advertising pocket mirror made by Bastian Bros. Co., Rochester, New York.



Envelope postmarked December 23, 1908 showing Hasselbring at 111-113 Nimrod Street, Brooklyn.



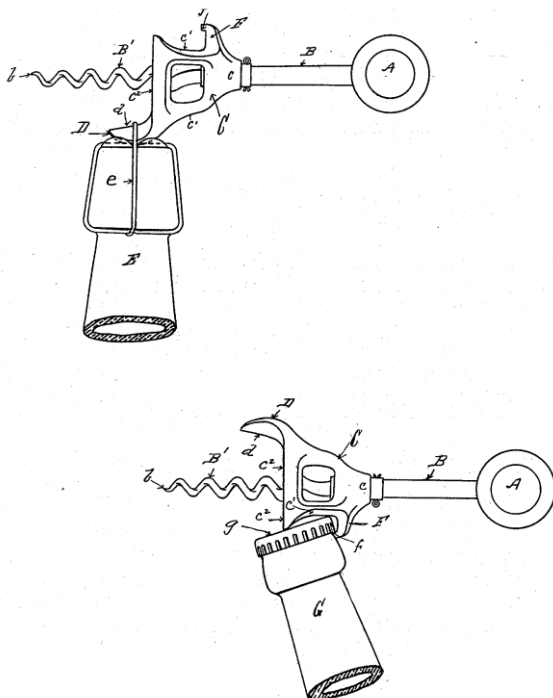
The corkscrew design shown on the 1908 envelope.



Above: John Hasselbring's U. S. Design Patent No. 38,166 of August 14, 1906 for a bottle opener and loop seal remover. No corkscrew was shown in the drawings.

Below: Advertisement in *The Jewelers' Circular-Weekly*, November 7, 1906.

Below: Walker's 1900 Patent bell which Hasselbring used on pre-Prohibition corkscrews. In Hasselbring's 1906 design patent, he affixed the wire breaker/loop seal remover to the bottle cap lifter.




BOTTLE OPENERS

Pat. Aug. 14, 1906

This illustration represents one of our many hundred designs in Buckhorn, Ivory, Ebony, Heavy Silver Mounted and Solid Silver, Etched and Engraved. The opener itself is made of the best forged steel, and nothing can excel it in quality and beauty. Excellent sellers for the jewelry trade. Opens the bottle in four different ways.

SEND FOR CATALOGUE
JOHN HASSELBRING
Manufacturing Silversmith
111-113 Himrod Street, BROOKLYN, N. Y.

Don't Miss This Money-Saving Chance to

Buy Your Silver Gifts Direct From the Factory

A Few of the Many Hasselbring Novelties

PEPPER AND SALTS
CANDLE STICKS
VASES
JEWELRY CASES
COLOGNE BOTTLES
CUT GLASS
TOAST RACKS
SUGAR HOLDERS
VANITY CASES
CARD CASES
CIGARETTE CASES
MATCH BOXES
HAT PINS
LOVING CUPS
COFFEE SETS
UMBRELLAS
LEMON DISHES
CASTERS
COASTERS
MUSTARDS
HORSE RADISHES
COIN HOLDERS
PUFF BOXES
PEN KNIVES
CIGAR CUTTERS
BOTTLE OPENERS
CORKSCREWS

Come in and See Our
Complete Line Before You
Select Your Silver Gifts

This is the first time you have ever had the chance to buy the fine quality Hasselbring Sterling Silver Xmas Novelties direct from the factory.

This season we are putting aside a number of special articles which we will sell at attractive prices to our friends in Brooklyn.

We sell to the jewelers and jewelry departments in all parts of the country and the number of articles we can sell in this direct-to-you way is, therefore, limited.

So, in order to have your pick of the complete assortment, come in and see our line as soon as you can.

This is your chance to save money on Sterling silver goods and at the same time be absolutely certain that you are getting the finest silver novelties made.

Take advantage of this opportunity—tear out this ad. and bring it with you so we will know you saw our offer in "Chat."

Remember this offer holds good only so long as the special Christmas assortment lasts.

John Hasselbring Mfg. Co.

1143 DeKALB AVENUE

Near Broadway

BROOKLYN, N. Y.

Advertising in *The Chat*,
Brooklyn, New York,
November 29, 1913.





Playing card theme on this Hasselbring set.



Using a similar silver mount for a floral theme. Before Prohibition, Hasselbring was buying the hardware from Edwin Walker at Erie Specialty, Erie, Pennsylvania.





The hardware from Walker included his U. S. Patent No.647.775 of April 17, 1900, for a self-pulling bell with cap lifter and wire breaker prong.



Hasselbring employed carvers using stag handles for their art.



The Hasselbring < J H > mark is on the tail of each of these carvings.





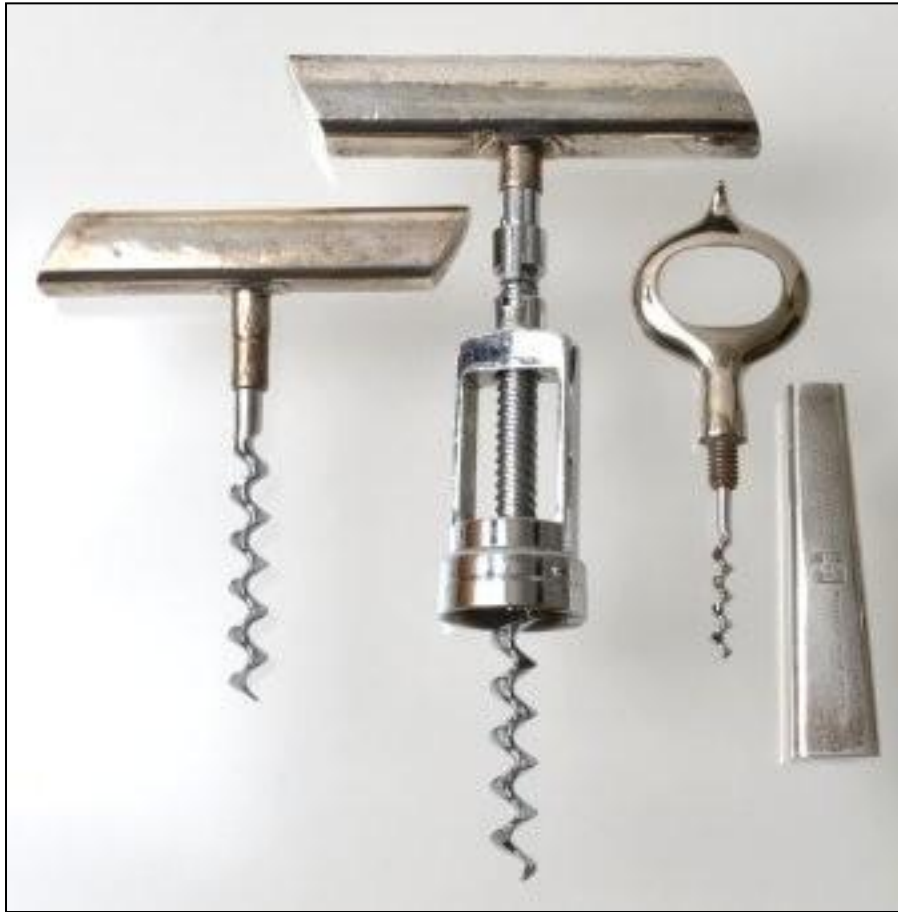
The silver mounts of the stag handle corkscrews were often monogrammed.



Stag handles with a cheaper version of Walker's bell.



After Prohibition, Hasselbring imported hardware from Germany. The frames were in the style of Theodor Fischer's German Registered Design No. 172,253 of June 12, 1903. The two above have stag handles and on the right is a polished horn handle.



From the 1930s on, Hasselbring's corkscrews and other products were produced in Art Deco mode. For these pieces he used silver handles.





With the end of Prohibition in 1933 and into the 1950s, Hasselbring produced a variety of bar sets for the homeowner to enjoy wine, beer, and mixed drinks.





The ultimate Hasselbring bar sets had every bar tool imaginable.





The bar sets were nested in sturdy wooden boxes. The corkscrew and bottle opener on the left below were part of a bar set. Corkscrews and bottle openers were also sold separately.

