

# Just For Openers APR/2004 Issue #102

A-63-1 made of Titanium & especially for Anchor Steam in 1998 by Mead Bates (owner of Cymba Inc). It will be interesting to see if Anchor Steam still sells the opener.



Copyright 2004  
John Stanley  
PO Box 64  
Chapel Hill NC 27514-0064  
(919) 419-1546  
Web Site  
[www.just-for-openers.org](http://www.just-for-openers.org)

Past Editors:  
Don Bull (1979-83)  
Ed Kaye (1984-88)  
Art Santen (1989-1993)

Membership Renewals / Annual Dues \$20.00  
Please Renew if your date is 06/30/04

Opener and Corkscrew Books (please check Selling Ads for details)

2004 Handbook of United States Beer Advertising Openers & Corkscrews by Bull, Kaye & Stanley

"Just For Openers" "A Guide to Beer, Soda, & Other Openers" by Donald A. Bull & John R. Stanley

"Soda Advertising Openers" by Donald A. Bull & John R. Stanley

"Beer Advertising: Knives, Letter Openers, Ice Picks, Cigar Cutters and More" by Donald A. Bull

"The Ultimate Corkscrew Book" by Donald A. Bull

"Bull's Pocket Guide to Corkscrews" by Donald A. Bull

"Boxes Full of Corkscrews" by Donald A. Bull

"ANRI Woodcarvings: Bottle Stoppers, Corkscrews, Nutcrackers, Toothpick Holders, Smoking Accessories and More" by Philly Rains and Donald A. Bull

## San Francisco Convention Update

As this newsletter goes to print we have 25 members planning on attending. If anyone still wants to attend let your editor know as I will need to call the hotel to get the group rate of \$99.00. Remember John Cartwright was a great host in 1998 and this year's convention promises to be just as exciting. Please make a note that the hospitality room number is 440. Pat and I will be in room 442 and John and Cheryl will be in 438. So when you check-in request a room as close as possible to these three rooms or at least try and get one somewhere on the fourth floor. Here is the convention schedule. It is possible we may have a mini auction (one item per person) Friday evening. It has been requested to keep the tradition alive. Right now I would like to wait and see how Verne feels about doing this and see if we have enough interest.

Tuesday-Wednesday-Thursday (Check-In & Room-To-Room trading), Friday Anchor Steam Brewery Tour (1PM to 4PM) (we will either car pool or try to rent a mini-bus), Friday Evening (8:30-9:30) possible small auction. Saturday Public Show (8AM to 1PM), Saturday Evening Group Dinner for members staying over Saturday night.

Please bring a display if possible. We have first, second and third in the regular display contest (any size and any type) and we also have a category for your favorite opener or corkscrew (Bill McKenzie Best Of Show Award). You only enter one piece for this contest and it can be whatever you like as long as it opens a bottle.

## JFO Members Update

With much sadness I report the passing of longtime JFO member, Lou Kovarik. Lou was one of the really nice people in the club. He attended last year's convention and especially was helpful at JFO Conventions in the mid-80s to early 90s. He was a member of BCCA (#77). Lou had been in bad health for several years but never complained. He is survived by his wife Rosemary, 3 children and 8 grandchildren.

## 2005 JFO Convention Omaha NE

John Mlady has signed a contract for the 2005 JFO Convention with the Double Tree Inn in Omaha. Dates are April 13-16, 2005. The room rate is \$89.00 (every room is a two-room suite). Start planning now to attend JFO #27. John will be a great host.

## 2006 JFO Convention Nashville TN

Your Editor is in the process of making plans for 28th JFO Convention to be in Nashville, Tenn. Pat and I will be making a trip this fall to work out a deal with the Holiday Inn Select Hotel. Comments by the membership are welcomed.

## Last Minute Convention Reminders

Remember BRING A DISPLAY of some kind. San Francisco is a real fun city. Plenty of great things to do and great restaurants to eat at. The cable car is a block and a half away from the hotel. Cable car rides are \$3 each way. You can get a seven day pass for \$20 and ride the cable cars, trolleys and buses all you want.

## 25th Annual Blue-Grey Show Fredericksburg VA February 12-15

Well what can I say, I roomed with Gary Deachman for three days. The show was a lot of fun and Gary can be fun but he can certainly have his moments (more on this later). I arrived Wednesday afternoon and unloaded a lot of openers and general breweriana. Gary had his half of the room filled with good openers and breweriana, so we had good sales all three days I was there. Gary and I spent Wednesday evening swapping some openers as I had a few he needed and he had some I needed. Ken Ostrow did sell me a F-9-2 Narragansett for \$50 and I was very happy to get that Wednesday night.

Thursday morning I made the pilgrimage to the Larry Moter "Wire Opener" shrine and as always we made a big trade. I got some good general sodas and Larry got some good beer wires and then I sold him 14 more soda wires at \$10 each. Thursday afternoon saw some good room-to-room action going on. I kept selling openers and other items at a good pace and then Friday had to happen (sorry Gary, too good to pass up). Right after lunch on Friday I had a NABA Board Meeting to attend and I told Gary over the course of two days that most of my junk openers were \$1 to \$2 each. I had brought lots of bags of common "I"s, "E"s, "C"s and a lot of non-beer openers. Half way through the board meeting we get a break and I headed back to the room to get a drink. Of course I run into Gary and I ask, "did you sell anything" and he hands me \$60. Fair enough and then I ask, "what did you sell?" Gary says, "a guy bought five bags of openers for \$5 apiece". I yell out, you sold five bags for \$5 each? I take off running for the room and Gary is behind. He mutters the first of a thousand, "oh boy, I messed up". I am yelling, "you sure did!" By the time we get back to the room Gary is pretty flustered and has a hard time remembering what bags he sold and to whom he sold the bags. He is not real sure what he sold for the other \$35. Looking around the bed where I had all of the openers, I am pretty sure the buyer just got common stuff. I keep telling Gary, "the openers were a \$1 to \$2 each not \$5 a bag and we had agreed if you are not sure about the price on anything, set it aside".

In any event the damage was done. We both spend the rest of show hearing people tell either Gary or me, "hey you got any more of those opener bags for \$5"? I started calming down Friday night but I was just amazed that another opener collector could sell openers so cheap! I really have only myself to blame as I did not price everything I had. You better believe next year I will. We had a few sales Friday evening and the Saturday show was pretty good and I left about noon time. Gary was still muttering, "oh boy, I messed up" as I departed.

When I got home I had just missed a call from who else but the buyer of the five bags, Erik Amundson, from Colorado. He had heard about "the opener giveaway" and had left three bags with the folks running the show and would dig the other two out when he got home. He also said he really wanted to buy three of the bags, especially the one with all of the flat openers. In the end Erik sent pictures and the "little bag of flats" turned out to be 95 "C"s and "D"s (all common), a second bag was common "G"s and "H"s, and a third bag my eBay selling bag (I had Erik return 3 of these openers and sold one on eBay for \$25). The last two bags were miscellaneous and Erik did not really want those (I did sell an L-2-1 Anheuser-Busch on eBay for \$36). Erik ended up sending me a \$100 to keep three of the bags. Of course the one he really wanted of 95 "C"s and "D"s, he left at the show. Larry Moter mailed it and the two bags he did not want to me for \$16 and the I mailed the one bag back to Erik for \$12. I told Deachman he is paying postage and he had better use all he's learned in 30 years of collecting at next year's show.

A special thank you to Erik Amundson for stepping forward and making this deal a little for fair for your Editor. Erik did tell me he wanted a sixth bag of can piercers that Gary sold to another man who was in the room at the time. So that explained \$5 of the remaining \$35, but who knows what treasures were in that bag. Maybe just maybe I might forgive Gary by next year's Blue-Grey Show. I do have to thank him for trading me a special opener, a C-1-10 Eichler. Ken Ostrow had originally sold me the opener at Blue-Grey in 1997 and I traded it to Gary that same year at the JFO Convention in Buffalo. Well he finally let me have it back. I guess since he did this, I will forgive him, but he will be forever known as the "\$5 Bag Man" and I will be known as the "no sales tag man"!

NOTE: Ollie Hibbeler found an A-13 "You Auto Drink "Gotter Trunk" at Otto Brick's" and was hoping it was a beer opener. I was at an antique show last year and a man had the same opener. He said Brick owned a bar near the Ford Motor plant in Detroit. Employees from Ford frequented the bar and that Henry Ford would from time to time come by and pay the tab for his workers. The man said Brick info is at the Ford Museum in Dearborn, MI.

# Spouse's Corner

By Pat Stanley, the Editor's Spouse

Each quarter I read the last Spouse's Corner before I begin the current article and I must say that I'm always surprised at how much I like the article!!! Then panic strikes, what if I can't do as well this time. What if my creative juices are exhausted? Well, even if they are not I just need to go to San Francisco for a break....a time to relax, laugh with friends, ride the cable cars and recharge.

John gave me my JFO 2004 Convention opener today. I'll be showing it off at work Monday. Come to San Francisco for yours!

We stayed at the Holiday Inn Fisherman's Wharf in October and I know my way around. Ghirardelli Chocolate is within walking distance. What else do you need to know? Two cable car lines are close by too. What fun!!

I just surfed the [www.sanfrancisco.citysearch.com](http://www.sanfrancisco.citysearch.com) site and they have the top 10 steak houses listed. The first three are on Van Ness Avenue. They are Harris', House of Prime Rib (that's John's favorite cut) and Ruth's Chris' Steak House (we have one here and plan to go there later this month due to the excellent things we've heard).

There are 394 events listed on this website. The first few items will happen before JFO arrives, but there's still plenty more. If you tire of exploring, you can go to a nearby Barnes and Noble and get a good book to enjoy in the very comfortable Holiday Inn. Some Ghirardelli chocolate would go well with reading time. On second thought, chocolate is good anytime!!

Bring a hooded jacket if you plan to ride the cable cars in the evening. A beautiful ride, but a little chilly at times.

Now I must forget the near future and look at the past which is good as all the wonderful collectibles came from that era. But in this case, I won't go back too far, just to the 1997 newsletters to reminisce.

In the January issue, Mark Barren our host for the Buffalo, NY JFO was making sure that everyone knew to bring him some NY State openers. John and I on the other hand were hoping spring would arrive or Mark might be out plowing the roads.

In Opener Trivia, John included pictures of three of his favorite openers, B-32s. The third one fell into one of his main collecting categories "Southern Openers". He also pictured a non-advertising Indian opener. He said he picked it up because it was pretty cheap and pretty cute (like my wife). I'm sure the "like my wife" only applies to cute, not cheap!!! But compared to the addicted collector we all know and love, perhaps I fit that too.

JFO included a write up in a West Australia newspaper featuring JFO member Les Cole who sold his royalty commemorative and crested china and recovered from the ensuing withdrawal symptoms by turning to the great hunt for openers. Les defined "full bottle" as someone on the ball, clued up, or smart cookie like our term, "playing with a full deck". That makes sense, as once the bottle is empty you might not be too "with it".

Ollie Hibbeler sent in a write up about his and Shirley's trip to the Cornhusker Fall Convention they attended in October '96. The president of the Cornhusker Can Chapter was John Mlady, our host for JFO 2005 in Omaha, Nebraska!!

The January '97 Spouses Corner included this quote in recognition of Bill Pattie's wife Lyla, "All spouses know that Lyla is a special wife and that Bill can't find a duplicate of her".

Ron MacLean shared his article "Common Corkscrews V: Wall Mount Corkscrews" if you want to read that article again. The write up included not only informative narrative, but several pages of sketches too which makes this contribution well worth looking at again.

## Spouse's Corner (continued)

John listed Ed Kaye's Collection of Baseball Players (A-9s) in the January newsletter, along with pictures. Now John has the actual collection!! Wonder how that came about?

Don Bull sent in pictures of the front and back of a special opener offer from Jack Daniels. You could get some postcards from Lynchburg, Tennessee too, the home of the Jack Daniel Brewery. Wonder if Don has any of those in his postcard collection?

The April '97 newsletter carried the sad news that Bill McKenzie lost his fight against cancer. But that horrible disease could not take away all the fond memories JFO members have of this dear man. See July 1997 newsletter for a tribute that appeared in a Columbine Chapter newsletter.

In the April edition we always hear about the Blue/Grey Show held every February in Fredericksburg, Va. In '97 the first person John ran into was JFO member Larry Moter. Larry stopped for a short visit with John just this week. He hadn't been here for a while, but found our home using the directions we gave and the scent of openers as the final guide.

The results of Todd Milano's "I-7" study completed with the help of the I-007 Task Force were included in the April issue.

The Anheuser-Busch Pocketknives article by Barry Collinsworth that appeared in the December 1995 "National Knife Magazine" intrigued me!! It starts out with "Calling cards can be so boring". Indeed they are, but Adolphus Busch's idea certainly is not. He came up with something that is "both a testament to his merchandising savvy and a legacy of fine pocketknives for today's collectors.

Here are some highlights from this fascinating article:

- The St. Louis brewer displayed real talent for the technology side of the business, but was equally ingenious in merchandising his beers.
- And for a calling card, Busch often bestowed pocketknives; a look through a Stanhope lens (a tiny peephole in the handle), revealed the image of Adolphus himself, in the unlikely event the recipient forgot who gave him the knife.
- The pocketknives were first used in the late 1870's and were reissued in at least 70 varieties through the years until his death in 1913.
- The knives were issued by other company representatives as promotional souvenirs at major events such as the St. Louis World's Fair in 1904 or the Chicago Columbian Exposition in 1893.
- The earlier editions of the knife had a serrated blade angled just right so a gentleman could cut off the end of his cigar rather than having to bite it off (no doubt causing more than one wife to observe that a pocketknife could function for not just one, but TWO vices). Now the collection of these knives is a vice too...but even catches the interest of this spouse.
- The Stanhope in the Anheuser-Busch pocketknives is perhaps the most exquisite examples to be found with these lenses. Most contain views of one of several portraits of Mr. Busch. More rare are those with pictures of the brewery or of the St. Louis Fair.
- Several editions had two Stanhope viewers, showing both Busch and the factory for example.
- The article goes on in detail about the knife blades, mentioning that some of the highest quality advertising knives came from various Solingen cutlery works. I just purchased a unique bread knife made in Solingen. Imagine that!!

## Spouse's Corner (continued)

And in ending..they were premium pocketknives that for many years served to create an image and build awareness of a premium product.

Excuse me while I check out John's pocketknife display. Earlier today I placed a Mary Kay order on top of that showcase and was informed that they were his babies. He doesn't have any with two Stanhopes or pictures of the brewery or St. Louis Fair. Maybe someone will send him one as a gift.

A home brewer's magazine, "Zymurgy" had an article in 1997 called "Salute to the Bottle Opener". Oh my, this received lots of my highlighter notations in my review too. Just too many interesting things to report this time!! I'll have to limit my highlights on this one:

- According to legend, the Greek philosopher Archimedes once boasted, "Give me a lever long enough and I'll move the world".
- Opening a bottle is, to rephrase Thomas Edison's famous maxim, 99 percent anticipation and 1 percent perspiration.

Here is where I learned why bottle caps had cork in them, to prevent the beer from coming in contact with the metal.

The April Spouse's Corner featured Bob Stahly. He and Marge will only be with us in spirit this year as they just became grandparents again this week and will be busy helping their daughter. In that issue, Joe Young was quoted as saying that "collecting is innate". Marge responded with this, "When collectors are born, their fists are tightly clutching the umbilical cord, and when they are pried loose, they have a sense of loss, which can only be satisfied by collecting". So, is baby Aiden going to be a collector?

On to the July issue after that quote!! Here we find the write up John did on the ECBA Spring Meet in Allentown, Pa. As usual John was staying with Ben and Cornelia Hoffman to attend this show. Ben and John left the show for a short time to meet Don Bull as Don was bringing John some openers and other items for John to take to the JFO Convention. John's truck was so full that Cornelia had to catch a ride home with another collector!! I understand Cornelia. When JFO was in Fredericksburg, Virginia in 2002 I had to bring my own vehicle up there as John had his packed, leaving room only for John Burress who had flown in from Texas to see John's collection before heading to JFO.

In Opener Trivia, the story behind "My-Coca" was told. A woman named Diva Brown, who earlier was an associate of John Pemberton (the inventor of Coca-Cola) said he sold her the formula for Coca-Cola. Court cases proved she didn't own the formula, but she never gave up.

Pull out the July issue if you want to read the article "New Twists in Corkscrews" again, written by the owner of the Village Corner in Ann Arbor, Michigan.

Spouse's Corner featured "Openers 101". It was the beginning of my quest for knowledge that later evolved into reviewing all the past issues. When I've completed this task, perhaps I will return to "Openers 101". Perhaps I can even graduate to the next level.

John's report on the Buffalo JFO Convention focused on the famous M-3 trade with the host, Mark Barren. Mark "wanted the universe and I felt I was giving at least the solar system". The next day Mark was lowering his expectations. They were only one opener away from completing the deal. The trouble was that John didn't want to give up that opener. John was now determined to trade his way or no way. Mark finally relented. Now Mark can be a witness that I often have to go along with "his way or no way".

## Spouse's Corner (continued)

John finally met Sandra Emme at this show. We look forward to seeing her in San Francisco!

Now let's see what neat memories the October issue holds.....for starters, the ECBA Convention in Lancaster, PA. While Corkie and I were on an expedition for food, having been deserted by John's preference to see Joe Prosser's collection and mile long miniature railroad system, we discovered a neat garden center. I fell in love with an angel statue, about 3 feet high. I really needed an angel to watch over Corkie and me when John is away on his opener hunting trips. I kept asking him to come see my angel, but that would mean time away from openers. Crazy request. He finally made a very wise statement, "why do I need to see it, you're going to buy it anyways". And so I did. I later sent the dear little old man who crated her so she wouldn't scratch his truck a picture of her on the porch of her new home. Last July the ECBA convention was there again, but much to my sorrow the garden center had changed ownership and had very little outdoor statues. I did find a small adorable bear that adds some fun to my garden.

We did enjoy one side trip from ECBA (allowable because there were openers at our destination) at the home of Todd and Linda Milano's, where I-7s can be found. I use to have trouble remembering who the father is and who the son is as it's actually the son who is a member of JFO. Now it's easy to remember that Hale is the son as his sister is Hazel...two H's...surprised your names don't start with an "I".

A picture of a "Canco" truck is shown in this issue with Hale Milano holding the door. Canco was the manufacturer of the I-7 opener. Linda wasn't too amused at the idea of this truck sitting in their yard. They live on such a pretty tree lined street, it is best that they only have the picture to cherish.

As I bring this column to a close, it is my hope to see you in San Francisco where another year of collecting will commence, friendships deepen and chocolate be eaten!!!

Carefree Cable Car Days Ahead!!

### On The Road with Mike Krejci

The last few months has seen a bit of tug-o-war between John S. and Myself on EBay. We each have added some nice openers to our collections. I became the proud owner of a B-031-UL East Side, beating out not just John but one other bidder as well. Well it wasn't too long after that and John talked me out of the opener for a B-001-004 Gund's in real good shape. Then more recently Harold Queen beat me on a B-021-077 Schlitz, but like I've heard, if they made one there must be two. Don't worry I'll find another. Shortly after that I was high bidder on a B-021-145 Barbey's, Harold was interested in, soooooo after e-mailing Harold we worked out a trade of these two openers!

Then my most recent good buy was a L-002 Schlitz-Budweiser at 69.60 plus shipping. The auction ended while I was on the road with no access to a computer, so I had to call John from Baltimore to see if I had won the bidding. One other trade that added a B-021-077 Schlitz to my collection was with John also. He got an E-014 Fritz.

A few weeks ago I was talking with John on the phone. He asked if I was able to stop at many antique malls in my travels. Since I used to do that a lot it got me thinking (that hurt). After five malls, one huge one in OHIO, and four in Wisconsin, I am now the proud owner of three new openers. A "C" type Hillsboro Pale, an E-5 Pabst and one advertising a funeral home on a "F" type. It has a half of a slotted spoon with the opener on the other end and is marked on the back side Grand Ma's Lopsided Spoon. One other opener I found was at Market days in Arcadia, FL, (where I've had to suffer thru 70 degree weather for a few days visiting my folks) was a N-056-999 with advertising for Riverside Church of God. For opening bottles of holy water????!?!?

PS, I almost forgot that I got an N-78-2 Bartels in the eBay bidding wars.

Here is Mike's want list for the convention and of course they are all Schlitz, B-018-585, B-018-621, B-018-466, B-018-607, B-018-305, B-019-069, B-021-358, B-021-543, B-021-498, B-062-009.

**Just For Openers Membership Directory (258 Members)**

1033	Ackerly	Tom	Bunny	4602 Ackerly Way	Brandon	FL	33511-8002	tacks@earthlink.net	Beer & Soda Openers
920	Adler	Russ	Jill	W11307 City Rd V	Lodi	WI	53555-9628	russ_adler@hotmail.com	"D"s, "H-7", "H-11" & Adler Brau Openers
679	Alcorn	Dewaine	Irma	4416 Waterbury Ln	Lincoln	NE	68516-1520	dialcorn@alltel.net	Nebraska & Minnesota Beer Openers
230	Anheuser-Busch Co Inc	Corporate Library		PO Box 1828 Bechtold Station	Saint Louis	MO	63118-0828		(Write Attn. Mary Butler)
1010	Antonelli	Harry		701A Ramblewood Ln	Bethlehem	PA	18017-6332		US Beer; Pennsylvania
751	Arber	Bill	Barb	11162 Broadway St	Alden	NY	14004-9515	wrabra@aol.com	Any & All Openers
810	Armstrong	Steve		PO Box 741	Kamiah	ID	83536-0741	sunset@cybrquest.com	US Beer; All Montana & Idaho & H-8s, L-1s, M-1s, M-2s
620	Asplund	Robert	Bette	32732 Early Rd	New Carlisle	IN	46552-9674	betbobasp1@aol.com	
771	Atkinson	Murray	Pam	9096 E Bella Vista Ct	Floral City	FL	34436-2401	murpam@atlantic.net	US Beer Openers, Antique Can Openers & Corkscrews
641	Atkinson	Tom	Gillian	5 Old Long Plain Rd	Amherst	MA	01002-9519		Corkscrews
415	Bachmann	Kurt	Debbie	197 Fraser St	Rochester	MI	48307-2633	bachusa@earthlink.net	All Michigan Breweriana
729	Bailey II	Eddie	Carol	4408 NE Sunnybrook Ln	Kansas City	MO	64117-1922	ecbaileys@webtv.net	Any Advertising Openers and Figurals
406	Barren	Mark		6141 Tachi Dr	Newfane	NY	14108-9517	mbarren@aznet.com	NY & PA Openers
416	Bates	Mead	Rose marie	23 Gardiner St	Darien	CT	06820-5111	cymbainc@aol.com or meadb@aol.com	Manufacturer of Bottle Openers (Cymba Inc)
585	Behnken	Ron	Jan	405 S Brewer St	Manchester	IA	52057-2206	rjbehnken@n-connect.net	US Beer, Soda
1000	Behrends	Robert	Linda	706 E Washington St	Havana	IL	62644-1555	billbob@fgi.net	US Beer, Soda, Starr Wall Mounts, Wall Mounts
389	Benjamin	Marc	Pat	167 Nixon Beach Rd	Edenton	NC	27932-9447	pbenj@inteliport.com	Types (One of Each)
1015	Bentley	W C		3305 Saint Catherines Way	Virginia Beach	VA	23452-6121	willieb53@aol.com	U S Beer Openers
903	Berg	Roger	Carolyn	14835 SW Gearhart Dr	Beaverton	OR	97007-6618	rrberg1@juno.com	Unique Mechanically

841	Bestard	Richard		PO Box 1334	Glendora	CA	91740-1334			B,C,E,G,I,J
202	Biehl	Fran		448 Crandon Ave	Calumet City	IL	60409-2202			"F" Types
1019	Billesbach	Joe		920 Sharon Rd	Beatrice	NE	68310-3026		joebud1@charter.net	US Beer Openers
786	Bittermann	John		621 Homestead	Joliet	IL	60435-5105		jebitter@aol.com	All Illinois Openers & Breweriana
699	Blalock	Lin	Shirley	908 Wyldewood Rd	Durham	NC	27704-1602			NEHI or NE-HI
767	Bohle	Mysten	Diane	655 NE Ochoco Ave	Prineville	OR	97754-1230		mylen.bohle@orst.edu	All Bottle Openers & All Corkscrews
652	Bolam	Bob	Kathy	58 Hillary Dr	Rochester	NY	14624-5245		rabolam@juno.com	General (All), Have Collection For Sale
478	Bolton	Fred	Sue	2133 Lower Lake Rd	Hastings	MI	49058-9406		f.abolton@core.com	Type "E-14" Openers
709	Bongiovanni	Robert	Denise	154 Springers Mill Rd	Cape May Court House	NJ	08210-2039		bonge@fcc.net	Beer, Soda, Keychain
922	Brand-Papcke	Elizabeth	Darvon	N7137 County Rd P	Whitewater	WI	53190-4471		epapcke@jvlnet.com	All Kinds-Soda & Beer
914	Brim	David	Kathy	624 W College Ave	Decatur	GA	30030-3609		brownmfg@mindspring.com	Starr Bottle Openers from Brown Mfg. Co. (Current Owner of Brown)
528	Britton	Dick	Bonnie	2902 Lacota Rd	Waterford	MI	48328-3127			General & Can Openers
675	Broders	Ed	Patricia	10220 Westwood Ave	Baton Rouge	LA	70809-3243		edbroders@yahoo.com	K-Type & Louisiana Openers
912	Brown	Bob	Martha	712 N 12th St	Mount Vernon	IL	62864-2804			Beer Openers
502	Brunner	William	Jo Ann	8773 W Mineral Point Rd	Mount Horeb	WI	53572-1229			Wall Mounts & "M-29-30-83"
642	Bryant	Donald	Loretta	3011 Firestone Dr	Sterling Heights	MI	48310-6025		shadow03@angelfire.com	Michigan Openers
1031	Bucksberg	John		PO Box 51182	Kalamazoo	MI	49005-1182		buck@bellsbeer.com	US Beer, Corkscrews, Starr Wall Mounts; Pabst, Midwest US
1	Bull	Don	Bonnie	PO Box 596	Wirtz	VA	24184-0596		corkscrew@bullworks.net	All Corkscrews, Beer Knives, Beer Ice Picks & Beer Letter Openers
749	Burgart	Paul		PO Box 200147	Boston	MA	02120-0003		farm2sea@aol.com	Figurals & Massachusetts & Iowa Openers
957	Burke	Richard		30 Westminster Dr	Marlborough	MA	01752-3679		rburke46@lycos.com	US Beer



822	Burruss III	John		318 Lost Oak Dr	Canyon Lake	TX	78133-5720		burrjeb@gvtc.com	US Beer; A-1, A-9, A-12, A-15, A-35, B-24, C-13 (w/ Bottles), E-1, E-2, E-3, E-14, G-1, L-4, M-3, M-73
824	Calhoun	Mike	Linda	424 Joilet Rd	Marquette Heights	IL	61554-1426		mgcalh@yahoo.com	Openers & Corkscrews All Types
690	Campbell	Bob	Elayne	12117 N 138th St	Scottsdale	AZ	85259-3760		bobcaz8@aol.com	Beer Advertising Openers
530	Carlson	Brian		6938 Upper 5th St N	Oakdale	MN	55128-6719		bmitchellc@junno.com	All (Esp Hamm's)
1035	Cartwright	Cal		4015 Waterhouse Rd	Oakland	CA	94602-1840			
587	Cartwright	John	Cheryl	1548 Via Arroyo	Paso Robles	CA	93446-1838		jccm@charter.net	"A"s, "B"s (Beer & Soda) & Golden West, Port Townsend & Rainier Breweriana
733	Clark	Dick	Jackie	8410 S Ave D	Yuma	AZ	85364-8441		rwclark@uwest.com	B-24/E-4/G-9/I-22
927	Clovis	Steven	Sharon	3246 Woodfield Dr	Walworth	NY	14568-9442			Mainly "B"s, B-14, B-18, B-19, B-21, B-22, B-23, B-24 and some "A"s
1014	Coleman	Gary	Kathryn	11 S Culver St	Port Jervis	NY	12771-3901		gcoleman@summitresearchlabs.com	General; Like Corkscrews & Knives w/ Openers best
649	Collier	Wayne	Jeannette	13317 Vista Arroyo	San Antonio	TX	78216-2243		wcollier@txdirect.net	General, Figurals All Metals
1034	Conner	Art	Karen	21150 Serango Dr	West Linn	OR	97068-2836		artc@wanke.com	US Beer, Soda, Corkscrews (Victorian), Foreign, esp Figural Openers (1900-1920)
345	Counciller	Dr Harry	Carol	937 Atir Ln	Greenfield	IN	46140-2828			General (Beer & Brewery Related)
995	Coursey	C J	Debbie	2865 Fleetwood Cv	Greenville	MS	38701-8015			General, US Beer, Starr Wall Mounts, Cast Iron Figurals, Wall Mounts
204	Cress	David	Susan	1816 Elizabeth St	Janesville	WI	53545-2704		drsmc@sbglobal.net	General & Souvenir Openers (Unique & Different Shapes)
531	Creuziger	Dick		1226 Grove Ave	Racine	WI	53405-3043			Pabst & Coca-Cola
1040	Cummings	Chuck	Carolyn	PO Box 311	Etna	OH	43018-0311		cummc1942@aol.com	General, US Beer, Soda & Starr Wall Mounts
246	Danziger	Herb	Camille	550 Cherry Ct	Birmingham	MI	48009-1459		hkdcfd@sbglobal.net	US Beer esp Silver Top & Royal Brew (KC) Beer Openers, Corkscrews, (Ukuleles & Wedding Cake Tops for Camille)

5	Darocy	Alex	Colette	9723 Bluestem Path	Prunedale	CA	93907-1006		darocykin g@cs.com	
953	Davis	Clark	Janice	47445 Rainbow Oaks Dr	Temecula	CA	92592-2937			General, US Beer, Corkscrews, Cast Iron Figurals
91	Deachman	Gary		PO Box 438	North Woodstock	NH	03262-0438			B-1-2-3, M-1-2, New Hampshire Openers, Bottle Shaped, L-2-4
1003	Dewald	Art	Lillie	705 17th St NE	Jamestown	ND	58401-2527			General, Soda, Can, Corkscrews, Starr Wall Mounts, Foreign
918	Dieterich	Andy	Marlene	5315 Emerson Ave S	Minneapolis	MN	55419-1112		amdieteric h@msn.com	US Beer, Wisconsin & Minnesota Breweriana
40	Donoghue	John		PO Box 311	Lynn	MA	01905-0511		jpd01905 @aol.com	Anything that Opens a Can or a Bottle
7	Dummer	Duane	Carol	910 N Palmatory St	Horicon	WI	53032-1011			Figural Openers, Corkscrews, All Types of Interesting Openers
1041	Duncan	Lee	Donna	PO Box 812	Crenshaw	MS	38621-0812		lduncan2 @midsouth.rr.com	Soda, Starr Wall Mounts, Wall Mounts, esp Coca- Cola
663	Dutcher	Mickey	Ellie	134 Cortland- McLean Rd	Cortland	NY	13045-9803		mdutcher @twcny.rr.com	Figural 3-D Cast Iron & Iroquois Openers & Go-Withs
636	Dye Jr	Ralph		PO Box 178	McConnellsville	OH	43756-0178			M-3s & M-73s
999	Edelstein	Howard		48 Lyman Cir	Shaker Heights	OH	44122-2119		edelsteinh @toddog.com	Collect all Retractable Bottle Openers such as L- 1s (Beer, Soda, Whiskey)
934	Eichhorn	Edward	Theresa	2010 Sandia Ct	Lusby	MD	20657-4018			US Beer, Soda, Starr Wall Mount Openers (esp Old German & Old Export of Cumberland MD)
763	Ellison	Dana	Catherine	1493 East Hill Rd	Ludlow	VT	05149-9623		ellisd@tds .net	Older Corkscrews & All Advertising Openers
738	Emme	Sandra	Gary Sabel	PO Box 1454	Upper Marlboro	MD	20773-1454		emmyward@yaho .com	General, US Beer, Soda, Corkscrews, Cast Iron Figurals, Starr, Wall Mounts, Washington DC
998	Evans	Edgar	Debbi	104 N Harmony Rd	Greenacres	WA	99016-9614		debbieva @msn.com	US Beer, Soda, Corkscrews, Starr/ Wall Mounts esp A,B, C
412	Feisel	Lyle	Dorothy	PO Box 839	Saint Michaels	MD	21663-0839		l.feisel@ie ee.org	General Beer Advertsing
865	Fisher	John		PO Box 953	Mechanicsville	MD	20659-0953		burntoak @earthlink.net	Pennsylvania Openers

8	Ford	Jack		5351 Boyd Ave	Oakland	CA	94618-1111			A-Types & Rainier Brewing & Hawaiian Brewing
723	Fossette	John	Mandie	2549 Sixth Ave	Sacramento	CA	95818-3905			Type "A" Openers
1027	Fox Sr	Thomas	Jane	419 Elm Ave	Selkirk	NY	12158-1205			General, US Beer, Soda, Can, Corkscrews, Cast Iron Figurals, Starr Wall Mounts
1032	Friedman	Dick	Maggie	6600 Sabrosa Ct W	Fort Worth	TX	76133-5221		dicknbo@charter.net	Coca-Cola Openers
498	Fuerst	Norma	Tom	11 Oak Valley Rd	Bloomington	IL	61704-7438			General & "Joseph Schlitz" Openers & Breweriana
1042	Galizia	Anthony		120 Village Blvd	Canfield	OH	44406-1355			US Beer, Soda & Corkscrews
604	Gausepohl	David		3488 Ridgewood Dr	Erlanger	KY	41018-2887		beerdave@fuse.net	All Beer Openers Especially Kentucky Micros & Midwest Breweries
333	Gauvin	Paul	Gail	24 Strawberry Ln	Manchester	CT	06040-6930		mtkneo@aol.com	Connecticut Beer, Soda, Starr Wall Mounts, Wall Mounts
1025	Gittings	Michael		2688 Mountain Rd	Danielsville	PA	18038-9666			US Beer, Soda, Cast Iron Figurals, Types, Starr Wall Mount, Wall Mounts
1050	Goodwin	Patrick	Patricia	2719 Strong Oak	San Antonio	TX	78247-3939			General, US Beer, Soda
605	Gormally	Tom	Phyllis	22555 Cardiff Dr	Santa Clarita	CA	91350-3029		tomphyllis@earthlink.net	US Beer; Types C-E -G-H-J-I
724	Goss	Janet	John	PO Box 524	Buffalo	WY	82834-0524		olyguy1940@msn.com	Montana & Wyoming
401	Graff	Fil	Robbie	10111 Lincoln Way W	Saint Thomas	PA	17252-9513		fgraff@epix.net	
187	Green	Craig	Susan	2715 67 Crt SW	Olympia	WA	98512-7101		recordmnger@comcast.com	Pre-Pro Northwest Openers & Corkscrews
1036	Greenspoon	Lyla		17 Farmstead Rd #1705	Willowdale, Ontario	CANADA	M2L 2G1			General, US Beer, Soda
890	Gritton	Charles	Hazel	2740 Richmond Ave	Des Moines	IA	50317-8733		cho1012@mchsi.com	General, US Beer, Soda, Can, Corkscrews, Cast Iron Figurals, Starr Wall Mounts, Foreign
1044	Grove	Jim	Carolyn	1060 Boalsburg Rd	Boalsburg	PA	16827-1005		grove1060@adelphia.net	US Beer & Types (esp NY & PA)
643	Gruver	Tim	Tonie	129 Oakdale Dr	Zelienople	PA	16063-9309			Old Beer Openers & Corkscrews

666	Hall	John	Anna	2562 Hill Ct	Sebring	FL	33872-4232		halann@earthlink.net	A-12s
651	Hanold	Bill	Karen	9677 N Fire Leaf Dr	Bloomington	IL	61704-5506		bkhanold@aol.com	US Beer Openers
606	Hanson	Ray	Pat	14345 Canterbury St	Leawood	KS	66224-3932		rfhanson@kc.rr.com	"A" & "B" Openers, Corkscrews
208	Harding	Russ	Sylvia	2665 Tamora Way	Colorado Springs	CO	80919-3570		rusnsylvia@aol.com	US Beer, Can, Starr Wall Mounts, Wall Mounts
13	Haydock	Herbert	Helen	1660 2nd Ave S	Wisconsin Rapids	WI	54494-4705			All Breweriana
947	Haynes	Wilford	Darlene	5199 Lucinda Dr	Prescott	MI	48756-9137		whaynes@pocketmail.com	All With Advertising, Unusual, Etc
748	Hedges	Robert	Leticia	934 W Woodcrest St	Bloomington	CA	92316-1534		rjnleti@aol.com	All Openers
50	Heflin	Gene	Sharon	27 Chimney View Ln	Springfield	IL	62707-9306		gheflin@gcctv.com	US Beer & Starr Wall Mounts
988	Hegedus	James		1399 Rose Ave	Lincoln Park	MI	48146-3350			Beer Advertising
149	Hibbeler	Ollie	Shirley	535 Villa Piazza Ct	O'Fallon	MO	63366-4448			General & US Beer Openers & Corkscrews esp Missouri Beer & Soda
725	Hoesch	Kenny	Ruby	PO Box 299	Zeeland	MI	49464-0299		solomon@zeelandlaw.com	Cigar Box Openers (All Kinds)
261	Hoffman	Ben	Cornelia	213 Simmons Rd	Perkiomenville	PA	18074-9587		benbay@netcarrier.com	General, US Beer, Types esp PA & CBOs
760	Hoffman	David	Jami	929 W Broad St	Williamstown	PA	17098-9501		djhoffm@epix.net	Any Beer Openers I Can Find
476	Horn	Harry	Rose Mary	3113 Smoky Ct	Sacramento	CA	95826-4147		harhorn@sbcglobal.net	A-13 & E-4
1048	Howard	Deb	Richard	1108 N High St	Winchester	TN	37398-1034			General
907	Huber	Mike	Deb	176 Suncoast Dr	McCook Lake	SD	57049-4016		mhuber@iw.net	South Dakota, Iowa, Nebraska Openers
512	Hufford	Terry	Jan	7147 Parkview Ave	Falls Church	VA	22042-1615		tih@gwu.edu	US Beer Openers
1047	Hunkele	Susan	Art	3146 Mount Carmel Rd	Cincinnati	OH	45244-1953			General
925	Irrig	William	Nancy	6406 Whippany Way	Burke	VA	22015-3427		wirrig@aol.com	All Domestic
853	Jacobsmeyer	Ed	Ginger	7706 Dunbarton Ave	Los Angeles	CA	90045-1030		ejacobsmeyer@mjournal.com	Beer Openers

538	Jarrell	Roger	Janice	1500 Sedwick Rd	Durham	NC	27713-2626			West Virginia, Texas, & Southern Openers & Corkscrews
700	Jarrell	Taylor		1500 Sedwick Rd	Durham	NC	27713-2626			West Virginia, Texas, & Southern Openers & Corkscrews
181	Jay	Norm	Judy	839 James Ct	Wheaton	IL	60187-6344			All US Beer Openers & Corkscrews
213	Johnson	Art	Eileen	155 Hartford Ave E	Mendon	MA	01756-1119		eejafj@earthlink.net	"M-3" "Slide-Out" Openers & "M-73" "Slide-Out" Opener/ Corkscrews
X213	Johnson	Art	Eileen	200 Elmwood Ln	Naples	FL	34112-3202		eejafj@earthlink.net	Residence Oct-May
926	Johnson	Edward		1300 Poquonock Ave	Windsor	CT	06095-1811		johnsoned1777@hotmail.com	Connecticut Openers All Types
445	Johnson	Nick	Rena	11287 W Meadowview Ln	Nine Mile Falls	WA	99026-9419		naejohnson@msn.com	Any Beer Items from Spokane WA
569	Johnson Jr	Art	Nancy	347 E Orange St	Lancaster	PA	17602-2916			Philadelphia (All Types) (Beer, Soda or Whatever)
520	Jones	Odis	Janet	2946 W 7 St	Jacksonville	FL	32254-1908		jdocotis@aol.com	All Kinds
860	Jung	Paul	Joan	PO Box 425	Bechtelsville	PA	19505-0425		jungpa@webtv.com	M-1 & M-2 & L-1 & Jung Brewery Openers
893	Kaiser	James	Cheryl	55774 Washington Dr	Shelby Township	MI	48316-1168		kaiserhof@comcast.net	Detroit, Mt Clemens & Port Huron Michigan (Pre-Pro)
11	Kaye	Ed	Eileen	7077 Cedarhurst Dr	Fort Myers	FL	33919-6703		erkeea9@msn.com	Type "A-9" Beer/ Non-Beer
1037	Kelch	Fran	Sherri	522 Whispering Pines Rd	Lindenhurst	IL	60046-8717		fkelch@aol.com	Northern Illinois Beer Openers
1030	Kellegham	Brian		735 S Lincoln St	Longmont	CO	80501-6314		brian@bisondesigns.com	General, US Beer, Soda, Can, Corkscrews
321	Keown	Mary Ann		10547 Mert St	Saint Ann	MO	63074-3433			"M-3"s (Beer & Non-Beer)
1045	Kharouf	Paul		5860 Lilac Ln	Hales Corner	WI	53130-2172		paul.kharouf@we-energies.com	General, US Beer, Casr Iron Figurals; esp Animal Shaped
539	Kimmons	Mike	Jan	3801 Elledge Dr	Shawnee Mission	KS	66205-1353			US Beer esp Pre-Pro Kansas City
727	King	Charles	Karen	32 Amsterdam Ave	Glenmont	NY	12077-3630		king@albany.net	Albany, Troy, Schenectady, Cohoes, Amsterdam, Hudson, NY Breweries

627	King	Dennis		PO Box 666	Lake Placid	NY	12946-0666		kingfish12946@cs.com	Anything Harvard Brewing Co, N-Style Openers, M-1-2-3
267	Kirkpatrick	Charles	Janice	295 Leyden St	Denver	CO	80220-5951		charles.kirkpatrick@uchsc.edu	Corkscrews
703	Knapp	Joseph		211-A Berbro Ave	Upper Darby	PA	19082-2014			US Beer & Soda esp Pennsylvania, Anheuser-Busch & Root Beer Openers
909	Krejci	Mike		W19103 Lake St Lot 3	Aniwa	WI	54408-9756		pigpen1952@msn.com	All Kinds especially Wisconsin
1022	Kreul	Royce	Karen	152 S Burr Oak Ave	Oregon	WI	53575-1367		kreul@aol.com	General, Cast Iron Figurals (Longtime FBOC Member), Wall Mounts, Anri Carved Bottle Stoppers
433	Kroll	Victor	Jackie	3451 Nighthawk Ct # 433	Punta Gorda	FL	33950-6675		beer104@comcast.net	Wisconsin Brewery Openers & Corkscrews
1046	Lantry	Jon		660 N Olive St	Ventura	CA	93001-1870		lantry@sbglobal.net	General
271	Laraway	Bill	Diane	627 Kenwood Ave	Delmar	NY	12054-1607		brew.coll@verizon.net	All from Albany, Schenectady & Troy NY
759	Larson	Don	Jackie	213 N Campbell Ave	Beloit	KS	67420-2427		jl Larson@nckcn.com	General, US Beer, Soda, Cast Iron Figurals
1016	Lauver	Gary	Linda	713 Athens Cv	Belton	TX	76513-4874		lglauver@sprintmail.com	US Beer & Can Openers from Small Breweries, Texas, Oklahoma
966	LeClair	Gerald	Barbara	1326 County Road 47	Henerson	AR	72544-9121		jerrico_0729@yahoo.com	General, Soda, Types, Starr Wall Mounts, Wall Mounts (Have Traders)
804	Lendy	Dave	Shari	1927 Allen Dr	Geneva	IL	60134-3109		davidlendy@aol.com	US Beer & Malt Openers (Esp Illinois)
435	Lewis	Samuel	Carol	113 Rockwood Dr	Pittsburgh	PA	15238-2333			Cigar Box Openers
15	Lohmiller	George	Eleanor	2924 Orchard Ave	Grand Junction	CO	81504-5342			All
384	Lorett	Mike	Bobbie	PO Box 28	Conifer	CO	80433-0028		mlorett@nilenet.com	Corkscrews
62	Lothridge	Tom		31 Pearl St	Bainbridge	NY	13733-1027			All Openers & Corkscrews
743	Love	George	Martha	4301 Forest Plaza Dr	Hixson	TN	37343-5017			Tennessee Openers
752	Loy	Greg	Karen	316 Lynwood Ave	Ottumwa	IA	52501-4938		karenloy@hotmail.com	US Beer, Corkscrews, Types esp Iowa

449	Luchsinger	Paul	Anne	1126 Wishart Pl	Hermitage	PA	16148-4410		ppl@infonline.net	Early U.S. Patented Corkscrews & Syroco Co.
1011	Lueken	Tom	Mary	14415 E Erie Rd	Albion	MI	49224-9621		tjlueken50@yahoo.com	US Beer Openers
274	Lyons	Tom	Janet	321 Valley Court Rd	Lutherville	MD	21093-6413		tlyons321@aol.com	Figurals & Anything about Golf!
816	Mahood	Jeff		303 W Elmwood Ave	Mechanicsburg	PA	17055-4126			General, US Beer, Soda, Types
275	Mandzuk	Phil	Judy	340 Morley Ave	Winnipeg, Manitoba	CANADA	R3L 0Y5		philman@mts.net	Good Rare Canadian
665	Marcum	Samuel		4625 Rainbow Dr	Jefferson City	MO	65109-0248		cherokee2@mindspring.com	Pre-1950 Missouri Breweriana, Esp. Capitol/Moerschel Jefferson City Sedalia, St Charles & St Louis MO
677	Maxwell	H James		1050 W Blue Ridge Blvd	Kansas City	MO	64145-1216		hjmesq@kc.rr.com	Openers; Kansas City MO Beer & Soda
796	Mayer	George	Terry	10 Library St	Lily Dale	NY	14752-1145			Openers, Trays, Foam Scrapers
1007	Mayville	Dan	Bonnie	E7446 County Road H	Fremont	WI	54940-9747		dmay@centurytel.net	US Beer Openers (Wisconsin)
153	McKienzie	Elvira		6360 S Jellison St	Littleton	CO	80123-3174			
712	McNary	Robert	Gloria Counts	15335 Banjo Dr	Hudson	FL	34667-3788			All Types of Beer Openers plus Iroquois Openers
655	Milano	Hale	Todd (Dad)	506 Spring House Rd	Camp Hill	PA	17011-1454		toddmilano@centralpenn.edu	"I-7"s & Harrisburg, Pennsylvania
668	Miller	Darwin		32 La Canada Way	Hot Springs Village	AR	71909-2658			All Bottle & Can Openers
X668	Miller	Darwin		688 Broad Ave S	Naples	FL	34102-7186			Residence Nov-Mar
861	Miller	Robert	Janice	2946 S 16th St	Milwaukee	WI	53215-3723			All Kinds
732	Mlady	John	Jackie	1506 S 25th St	Omaha	NE	68105-2611			All Nebraska Openers, Corkscrews & Breweriana
840	Molldrem	Barney	Leslie	320 Highland Ave	Syracuse	NY	13203-1608		bmolldrem@aol.com	Defunct New York State & Minnesota Brewery Openers
450	Moter	Lawrence		10149 Michaels Rd	Woodford	VA	22580-2500		accneca@aol.com	E's & F's & P's Wires (Beer & Soda) esp Wire from Uneeda Brewing Co of Wheeling WV

279	Muma	William	Sherron	9530 Swanbrook Ct	Elk Grove	CA	95758-1305	wksimuma@cs.com	General, US Beer, Soda, Can Openers
1038	Nasco	Dean	Jaunita	2062 Highway 64 E	Hayesville	NC	28904-4718	dpn@djgms.net	General, US Beer & Soda
906	Nau	Kurt	Lisa	90 W 14th St	Deer Park	NY	11729-4022	knau@erols.com	Texas Openers
581	Neas	Paul	Alma	4953 Vera Cruz Rd	Center Valley	PA	18034-8632		General (All)
611	Newmark	Michael		549 Buxton Ave	West Hempstead	NY	11552-2832	miken549@yahoo.com	US Beer
742	Newsome	L J	Walter	PO Box 14231	Phoenix	AZ	85063-4231		Dairy Openers & Cigar Box Openers
67	Nowicki	Pete		1531 39th Ave	San Francisco	CA	94122-3015	portfire86@aol.com	Hamm's Beer
741	Olson	Floyd	Dale	18226 182nd St	Tonganoxie	KS	66086-5143	dalecookepress@aol.com	General, Oxygen-Acetylene Tank Wrenches, Openers w/ Square Hole for Carbide Lamps
223	Orth	Dennis	Mary	4210 S Lake Five Dr	Colgate	WI	53017-9764	dorthjbfan@charternet.com	
126	Osborn	Jim	Mary Jo	320 Dobson St Apt B	Carterville	IL	62918-1549	jro320@midamer.net	US Beer Openers & Corkscrews; Pre-Pro esp "A-Types", Brass "B"s, "L-4"s, "M-1"s & "M-2"s
800	Ostrow	Ken		56 Cedar St	Newton	MA	02459-1113		New England Paper Label Bottles & Breweriana Dealer
719	Paczkowski	Joe	Rita	317 Medford Lakes Rd	Tabernacle	NJ	08088-9018	jopacz@yahoo.com	US Beer, "B", "C", "E", "G" & "H" Types from New Jersey, NYC, Pennsylvania
754	Palecek	Adam		639 Monroe St Apt 402	Sheboygan	WI	53085-1357	apalecek1@sbcglobe.net	All Beer & Novelty
451	Paradi	Joseph	Monika	670 Meadow Wood Rd	Mississauga, Ontario	CANADA	L5J 2S6	paradi@mie.utoronto.ca	Corkscrews, Bar Screws, Pronged and Hooked Cork Pullers
486	Pattie	Bill	Lyla	PO Box 1126	Big Timber	MT	59011-1126	bpopeners3@cs.com	Montana All Types of Openers & Corkscrews
776	Patton	John	Eileen	9224 Sugarloaf Dr	Redding	CA	96001-9763	deacon@jett.net	"B-24" "C-19" "E-1-2-3-9-11-13-14" "G-1" "H-3" "I-1-2-3-6-7-15-18-22", "J-5"
943	Payne	Tim		5144 Walker Ave	Lincoln	NE	68504-2961	t5144@msn.com	All Nebraska Beer Openers & Other NE Breweriana
726	Pearis	Gibson	Dana	315 Berry	Belton	MO	64012-1977	gibpearis@kc.rr.com	Figurals



750	Petro	Andre w	Linda	116 Otter Ln	Waterloo	SC	29384-9675		andypete@yahoo.com	Pennsylvania esp "Coal Region", F&S, Stegmaier, Kaiers
811	Pinney	Dave		1766 Red Barn Rd	Encinitas	CA	92024-3033		davecent@tmisnet.com	Metal Beer & Soda Openers; Pinney Beverage Items
977	Poeth	Richard		211 Drumheller Dr	Northumberland	PA	17857-8627		rickstir47@evenlink.com	Can Piercers, Beer & Soda "Bottle or Can"
1024	Pokrywka	Jim	Denise	279 Pearl St	Seymour	CT	06483-3719		jppokrywka@aol.com	US Beer, Can (esp I-7s, Keglines, Canco or Quick & Easy)
875	Pommerville	Robert	Shirley	RR 1 Box 3-1	Oswegatchie	NY	13670-9722		ftroop22@yahoo.com	General, Soda, Corkscrews, Cast Iron Figurals, Starr Wall Mounts, Wall Mounts, Foreign
842	Post	Bob	Sara	4516 S Pin Oak Ct	Sioux Falls	SD	57103-4967		stickshack@earthlink.net	U.S. Beer Bottle Openers
831	Preacher	Hugh		PO Box 250544	Plano	TX	75025-0544		hugh.preacher@eds.com	A,B,C,D,E, (G,H,Some),I,J & Soda
572	Queen	Harold	Ida "Boots"	1001 Centre Ave	Jim Thorpe	PA	18229-1015		haqueen@ptd.net	"A-13"s, All "C"s, All PA (Beer & Non-Beer), "M-3"s, Starr, Wall Mounts, Corkscrews
713	Quilliam	Mike	Julie	65 Maria Dr	Great Falls	MT	59404-3769		mikequill@aol.com	All Montana Beer Openers
694	Quimby	Chris		3405 Yeoman Ave	Vancouver	WA	98660-1176			Soda Openers
734	Ransom	John	Norma	PO Box 97	Osborn	MO	64474-0097			Beer & Soda
670	Readel	Jerry	Barbara	15622 N 57th Ave	Glendale	AZ	85306-3010		breadel@uswest.net	US Beer, Soda, Wall Mounts
470	Redl	Alex	Peggy	1009 Elk St	Beatrice	NE	68310-3026		bluevwbug1965@yahoo.com	Little-Bit-Of-All-Kinds
857	Reeder	Thomas	Barbara	20 E Prospect St	Hopewell	NJ	08525-2041		reeder@unclegroup.com	Northeast Regional, Cast Figural Openers
358	Rees	Carl	Pat	11366 N Rio Vista Rd	Pocatello	ID	83202-5315			All Beer & Soda Openers
976	Reizner	Ray	Tracy	5757 N Sheridan Rd Apt 17H	Chicago	IL	60660-8710		racyray@aol.com	Bottle & Beer Openers
777	Roche	John		2815 N 58th St	Scottsdale	AZ	85257-1009		jroche2815@netscape.net	New York Openers
359	Roe	Lehr	Joan	160 Penfield St	Dundee	MI	48131-1129		lehr@dundee.net	Corkscrews
1049	Roussin	Donald	Mary Ellen	2177 Cherry Cove Ct	Maryland Heights	MO	63043-2157		donald.l.roussin-jr@boeing.com	All Breweriana from Missouri & Southern Illinois

158	Santen	Art	Dorothy	6126 McPherson Ave	Saint Louis	MO	63112-1104			General (All), Anything and Everthing That Opens Solid and Liquid Food Containers
691	Schaefer	Ed	Kelly	PO Box 149	Maple Springs	NY	14756-0149		eschaeferbeer@junio.com	Schaefer, Koch, Jamestown, Chautauqua, Cleveland Beers
X691	Schaefer	Ed	Kelly	6612 Tannin Ln Apt B	Naples	FL	34109-6851		eschaeferbeer@junio.com	Residence Oct-May
442	Schiffers	George		882 Huron Ave	San Francisco	CA	94112-4038			US Beer, Soda
508	Schmitt Jr	Conrad	Kay	406 Eastbrook Ln	O Fallon	MO	63366-1829			General, Corkscrews
983	Schroeder	Dick	Betty	3857 E Cavalry Hills	North Platte	NE	69101-9545			General
688	Schuldheisz	Lawrence		851 Doss Ave	Orlando	FL	32809-5880			General
916	Seidl	John	Lauren	4324 Granby Way	Marietta	GA	30062-8150		jseidl@mindspring.com	Hamms & Rahr Malting Co
443	Sell	Bill	Althea	457 Holly Ave	Saint Paul	MN	55102-2205		bsell1@isd.net	Corkscrews esp Souvenir & Nifty
898	Sepenoski	John	Rita	PO Box 120	Peconic	NY	11958-0120			All Openers
1001	Shepler	Richard	Janice	PO Box 269	Duck River	TN	38454-0269		rjs@isd.net	US Beer, Can, Corkscrews, Cast Iron Figurals
175	Sherk	Lawrence		PO Box 98094 970 Queen St E	Toronto, Ontario	CANADA	M4M 1J0		larrysherk@hotmail.com	All Canadian Breweriana including Openers
18	Sherman	Don	Ruth	438 Mavis Dr	Los Angeles	CA	90065-5054		sdasherman@aol.com	"A" & "B" Type Openers & Corkscrews
757	Sherman	Scott	Cindy	W5268 Quarry Rd	Appleton	WI	54913-8330		buckbear12@aol.com	General, Corkscrews
672	Skelton	Allan	Karen	1055 86th Ave W	Duluth	MN	55808-1414		allan.skeltion@mndulu.ang.af.mil	"A" & "B" Openers
410	Smith	Henry	Linda	5459 Woodhaven Dr	Cincinnati	OH	45248-5113		maaematt@cinci.rr.com	Cincinnati & Surrounding Areas
1009	Smith	Tom	Arlene	10202 Concord Ave	Sun City	AZ	85351-4541			General
1020	Solari	Chris		3116 Stuart Ave Apt 7	Richmond	VA	23221-2450			Can Openers
678	Sommer	Robert	Janet	413 Scott Dr	Silver Spring	MD	20904-1065		rjs888cpa@aol.com	Mostly US Breweries & Oddities

868	Sorrel	Glen	Deanna	10101 Brightling Ln	Austin	TX	78750-3875		gsorrel@kennedywilson.com	Key Shaped Openers & All Openers with Prest-O-Lite Key
1039	St Amand	Mike		198 Manly Street	Midland Ontario	CANADA	L4R 3C2		mf5@sympatico.ca	All Types of Bottle Openers
176	Stahly	Bob	Marge	1508 E Bridge St	Streator	IL	61364-3114		stahly@cretco.com	Wall Mounts
930	Stambaugh	Pat	Louy	718 S Lakeshore Dr	Lake City	MN	55401-1849		sailvi@onvoymail.com	Minnesota A & B Beer Openers & MN E,F,M,N,O,P
339	Stanley	John	Pat	3712 Sunningdale Way (Mailing PO Box 64 Chapel Hill NC 27514)	Durham	NC	27707-5684		jfo@mindspring.com or john_stanley@unc.edu	"A" & "B" Types, Southern US, Hoster-Columbus, & Fink Openers & Corkscrews
184	Stawarz	Henry	Marge	RR 2 Box 131	Rushville	IL	62681-9637		ohmy@winco.net	General (All)
839	Steffens	Fred	Alberta	2410 Cleveland Rd	Sebring	FL	33870-1565			General (All) & Corkscrews; esp Misc, Dual Purpose, Novelty
667	Steinke	Tom	Sharon	W343 S10062 Hwy E	Eagle	WI	53119-9999			"A"s & "B"s, US Beer, Soda, Cast Iron Figurals, Starr Wall Mounts, Wall Mounts
980	Stilwell	Darvin		1533 Houston Rd	Boonville	IN	47601-9415		dstilwell@earthlink.net	All Types
896	Stinson	Don	Lynda	PO Box 105 143 Haskins Point Road	Seeley's Bay, Ontario	CANADA	K0H 2N0		rideaubreeze@bellnet.ca	Starr Wall Mounts
991	Sudduth	Robert	Janet	1115 Lebanon Ave	Belleville	IL	62221-4017		bud_bob@charter.net	Anheuser-Busch/ Adolphus Busch Corkscrew Knives with Stanhopes
375	Summers	Stan	Pat	5880 N Livernois Rd	Rochester	MI	48306-2538		wagscreek@aol.com	Michigan Stuff
661	Sutton	Lou	Rita	PO Box 1112	Mechanicville	VA	23111-6112		louva40@comcast.net	General; All Virginia Openers
769	Swanstone Jr	Donald	Julie	601 Main St	Dearborn	MO	64439-9111		ds5@peoplepc.com	General, US Beer, Corkscrews, Cast Iron Figurals, Types, Starr, Wall Mounts, Foreign
1012	Teegarden	Brad	Jacquie	100 Louis Ln	Roseville	CA	95661-5250		katum3@surrewest.net	US Beer & Types esp California Pre-Pro & Sacramento
626	Teggatz	Bonnie		427 G Ave NW	Cedar Rapids	IA	52405-2643		twintin2@yahoo.com	Kitchen Utensils with Openers, Razor Blade Paint Scrapers
515	Tewksbury	Ralph	Linda	84 Wildwood Dr	Parkersburg	WV	26101-9783		lartewks@casinternet.net	Types C & E Beer Openers

363	Thompson	Thom	Frances	123 Shaw Ave	Versailles	KY	40383-1157		thomt@iglou.com	Coca-Cola Openers-Vintage & Lexington, KY Brewery Openers & Opener Literature
X363	Thompson	Thom	Frances	1389 Alexandria Dr Ste 7	Lexington	KY	40504-1777		thomt@iglou.com	Office
852	Thoms	Ernie	Jeanette	206 Windemere Way	Anderson	SC	29625-5267		rail@carol.net	US Beer & Soda; Southern Ohio esp Dayton & Cincinnati
895	Treadway	Gerald	Barbara	410 Strasburg Ave	Parkesburg	PA	19365-1029		tread410@ccis.net	General (All) & US Beer
851	Veley	Gordon	Melinda	921 Snyder Hill Rd	Ithaca	NY	14850-8701		barnbrew@aol.com	US Beer, Cast Iron Figurals
547	Vlossak	John	Doris	1044 E Eldorado St	Appleton	WI	54911-5568		jackvlossak@jjplank.com	Corkscrews, Champagne Taps, Walker, Williamson & Clough, Humason & Beckley; esp. with Knives, Brushes & Cap Lifters
162	Vollrath	Verne	Laverne	218 S Lexington Dr	Janesville	WI	53545-4322			All US Beer & Malt Openers
227	Wagner	Paul	Stella	944 Hale St	Pottstown	PA	19464-4034			General
228	Waldo	Harriet		1003 Winston Dr	Jefferson City	MO	65101-3647		hlwaldo@socket.net	"H"s and Any Missouri
975	Waters	Ken	Kathy	803 Highland Trl	Chapel Hill	NC	27516-8645		ken_waters@unc.edu	Corkscrews
1043	Weber	Robert		743 W Main St	Hamilton	MT	59840-2349		burnt4t@montana.com	General & US Beer (Collector & Dealer)
728	Westall	Jack	Wanda	5945 Shallow Creek Dr	Milford	OH	45150-1524		jwestall@cinci.rr.com	All Beer Opener Types (Except Wall)
684	Westland II	Deane	Kristi	1612 S 13th Ave	Saint Charles	IL	60174-4504		deane.westland@powerpackaging.com	All Openers, Chicago, Illinois, Wisconsin, Budweiser
583	Whelan	Cora		3216 S 51st Pl	Lincoln	NE	68506-3489			
933	White	Bruce		3976 W Cindy St	Chandler	AZ	85226-3879			General, US Beer, Starr Wall Mounts, Wall Mounts
1026	White	Ken	Marilyn	1101 Maxwell St	Colorado Springs	CO	80906-5539		mkwhite1@juno.com	General, US Beer, Corkscrews, Types, Wall Mounts (Mostly Flats & Wires)
296	Wilcox	Darwin	Ellen	8495 Croix Trl	Roscoe	IL	61073-9158		darnle@mail.com	General (All)
488	Williams	Don	Diane	1022 Diablo Rd	Danville	CA	94526-1924		plumpjack2@yahoo.com	Types, Falstaff, Copper Plated

365	Williams	Scott	Ursula	11601 Tissel Hollow Rd	Fairfax	IA	52228-9789		scottwil@netins.net	Types "A", "B", "E-4", Iowa Beer Openers, Bartender Knives with Cap-Lifter Built In Handle (Beer or Non-Beer)
326	Wisconsin State	Historical Society		816 State St	Madison	WI	53706-1488			
143	Wulff	Rod		623 Fern Way	Eldersburg	MD	21784-8516		emjomaco@yahoo.com	
314	Young	Joe	Jackie	36 S Weston Ave	Elgin	IL	60123-6036		jyoung60123@sbcglobal.net	Corkscrews & Tin Can Openers
525	Ziegler	Terry		698 Huffs Church Rd	Alburtis	PA	18011-2226		caplifter@aol.com	General, All Types of Openers
996	Zurava	George	Rebecca	2928 Silver Lake Blvd	Silver Lake	OH	44224-3037		leisy57@aol.com	US Beer Openers and Northern Ohio Breweriana

A-001-073	Royal Bohemian	Pat Stambaugh
A-004-019	Cold Spring	Pat Stambaugh
A-012-012	Grace Bros	John Cartwright
A-013-022	Virginia	John Stanley
A-016-007	Eastside	John Cartwright
A-017-007	Fresno	John Cartwright
A-019-002	Lone Star	Jeb Burruss
A-021-063	Schatz Brau	Pat Stambaugh
A-021-120	Peoples	Pat Stambaugh
A-045-001	City Club	Pat Stambaugh
A-051-001	Pabst	John Stanley
B-002-014	Lone Star	Jeb Burruss
B-002-042	Lone Star	Jeb Burruss
B-009-002	Salinas	John Stanley
B-011-001	Seattle (Var A)	John Cartwright
B-018-330	Ganser	Pat Stambaugh
B-018-465	Lakeside	Pat Stambaugh
B-021-322	Blass	Pat Stambaugh
B-023-171	Cokins Red Wing	Pat Stambaugh
B-028-001	Howell & King	John Stanley
B-050-001	Rainier	John Cartwright
B-071-001	Chattanooga	John Stanley
C-001-001	Central	Ben Hoffman
C-001-002	Doelger	Ben Hoffman
C-001-006	Bismarck	Ben Hoffman
C-001-007	Budweiser	Ben Hoffman
C-001-010	Eichler	Ben Hoffman

C-006-006	Redding	Ben Hoffman
C-006-013	Pabst	Ben Hoffman
C-015-022	Chevalier	Ben Hoffman
C-015-023	Monarch	Ben Hoffman
C-021-006	Grand Rapids	John Stanley
C-055-001	Budweiser	Art Santen
C-056-001	Budweiser	Art Santen
D-016-001	New Kentucky	John Stanley
E-001-004	Derby	Tom Gormally
E-001-056	Poth	Tom Gormally
E-004-261	Pioneer	Tom Gormally
E-006-195	Oil City	Tom Gormally
E-011-018	Arrow	Tom Gormally
E-014-746	Salt Lake	Tom Gormally
F-030-001	Wiedemann	John Stanley
G-076-001	Budweiser	Art Santen
I-007-037	Schaefer	Tom Gormally
I-007-045	AB	Tom Gormally
I-007-046	Berghoff	Tom Gormally
I-007-078	Malt Distaste	Tom Gormally
L-004-046	Black Label	Jeb Burruss
L-004-064	Manru	Jeb Burruss
M-136-001	Budweiser	Art Santen
M-137-001	Budweiser	Art Santen
M-138-001	Budweiser	Art Santen
M-139-001	Budweiser	Art Santen
N-041-002	Midwest	Pat Stambaugh

N-113-001	Budweiser	Art Santen
O-001-002	Leidegers	John Stanley
O-004-022	Golden Glow	John Cartwright
P-008-100	Phoenix	John Cartwright
P-019-007	Rainier	John Cartwright
P-053-006	Rainier	John Cartwright
P-054-018	Rainier	John Cartwright
P-087-001	Magnolia	John Stanley
P-100-001	Rainier	Herb Danziger
Q-071-001	Budweiser	Art Santen
R-049-001	Budweiser	Art Santen
Z-000-000	Bride & Groom Cake Toppers	Herb Danziger
Z-000-000	Copper Plated Openers	Don Williams
Z-000-000	Falstaff	Don Williams
Z-000-000	Non-Beer Corkscrews	Herb Danziger
Z-000-000	Royal Brewing KC MO Openers	Herb Danziger
Z-000-000	Schlitz	Mike Krejci
Z-000-000	Silver Top Beer Openers	Herb Danziger
Z-000-000	Ukuleles	Herb Danziger
Z-000-000	West Coast "A"s & "B"s	Verne Vollrath

**Convention Want List for Mem-**

## “Opener and eBay Trivia”

No comments from the last issue about the “D” Type Albany Beer or the G-26 Budweiser in the back of the Rodeo belt buckle. Art Santen has a cast iron steer wall mount bottle opener marked “Long Horn Beer”. Does anyone know where this brand was from and if this is really a legitimate or a fantasy opener?

Another steady quarter on eBay for good openers and corkscrews. The number of good items offered compared favorably with the last few quarters and as is the custom now, good pieces bring good prices. Highlights for the “A” types were the A-40-1 Inland Beer at \$203.50 with three JFO members bidding at the \$200 level. The biggest surprise was that two unknown before now styles of figural Coca-Cola openers were offered on eBay. JFO member, Dick Friedman, is the proud owner of the A-28 and the A-35 new styles. A local Wisconsin beer collector offered his great little collection of Oshkosh Wis openers. Several members ended up with some nice openers and I was very happy to get the A-13 Peoples Car. Another item of note was a seller calling the A-29 style a “hogstooth” opener. Maybe it is shaped like a hog’s tooth and it was a good publicity stunt as his A-29 Pepsi brought a very high price at \$112.50 (most recent sales have been \$30-50).

“B” types were very active and Bill Arber added another B-2 to his collection, #19 Rising Sun. The only other one I know was auctioned over 20 years ago. The usual good selection of B-18, B-19 and B-21 styles were offered and I believe the first Dr. Pepper B-23 “Spinner” was offered this quarter and brought a very strong price at \$302.77. It will be interesting to see how well a second one does when it is sold.

“Cs”, “D”s and “E”s were pretty calm with nice openers being sold, but once again a couple of soda openers stood out. Dr. Pepper again was very strong with an “E-4” bringing \$262.75 and an “E-5” Nehi with a Nehi bottle pictured bringing \$100.00. Top lot was the C-1-7 Budweiser at \$440.00 and yes your editor went crazy as I really wanted this opener. Unfortunately so did Bob Stahly and I paid dearly for it. I also was happy to upgrade my E-26-1 Virginia as the one I had owned for many years was very worn.

“F” types were highlighted by the F-1-2 Waukesha bringing \$66.78. This is a very neat opener as it pictures a lion head in the bowl of the spoon. No surprise but Dr. Pepper was tops in this category with an F-8 realizing

\$167.50. A real surprise was the F-12 Horsford Baking Powder kitchen spoon bringing \$139.49. You see a lot of baking ad spoons but this ad must be a real desirable one. Nothing unusual in the FBOC category and no real good pieces were offered. The best one being a “skull” figural.

“Gs”, “Hs” and “Ks” saw many above average openers sold and the best here was a “K-12” without the beer ad but in nice condition and with a nice cap pistol attached. “L-2s” were active as usual with lots of Anheuser-Busch bottle corkscrews sold. A really nice soda example for Jackson’s Napa Soda brought a strong price at \$250.50. Mike Krejci got a real steal in the L-2-16 Budweiser/Schlitz at \$69.60. Condition was average but a really neat one with the double beer ad.

“Sliders” were fairly hot with a nice M-3-33 Moose bringing \$126.29 and a M-3-36 Piels (2 Color) bringing \$330.00. Art Johnson is down to needing two beer ones to finish his collection (Seitz and Scranton). Art also got a nice three-color (Green, Red & Yellow) slider from England of all places with the ad A. A. O. N. M. S. Mike Krejci rode off with another big prize when he got a M-73-14 Budweiser/Becker for \$50 with the “B”uy “I”t “N”ow (what a steal). It was funny the seller says they sell for \$125 locally but he had a low price on his and this was even better because it was in great condition. Seller was right because he gave it away. Another one run over by the “truck driver”. Those “M-19” fake Coca-Cola muddlers are settling down at the \$20-50 range except some seller claimed his was from 1948 and got the high price of \$236.49.

“N” types saw several highlights. First was a N-9 Edmonton Beer with the Apr 26, 1904 patent date. This is only the second example of a N-9 with the 1904 patent date I have seen (the other is picture at the end of this article, a N-9-5 Muehlebach). A Canadian must have known it was rare as it brought \$125.00. If you have not noticed belt buckles (N-40 style) have gotten pretty hot on eBay. Prices listed are mainly for buckles with the opener in the center but most of the beer ones do very well. A couple of Hamms knives (N-42 and N-45) did very well and a somewhat rusty N-78-1 Gold Top fob went through the roof at \$305.00. The Coca-Cola door lock opener (N-510 style) saw several examples offered this past quarter. Thom Thompson told me that over 20 years ago a small hoard (250) were found in the original boxes. It certainly explains why so many of this style turn up.

## “Opener and eBay Trivia”

Wall mounts saw a lot of Starr Xs sold but prices seem to leveling off and even coming down for many examples. The only real tough example that was sold the last three months was the extra large Starr wall mount for Flight Malted Milk. The buyer got a fairly good deal at \$299.01 as this style has less than 10 known.

Beer corkscrews (“P” types) were very active especially the Anheuser-Busch knives. At some point I need to update the handbook as several A-B knives are not listed. One that is the A-B knife with Anheuser-Busch on the front and a flag design on the back and has green and gold enameling. The first one this period on eBay brought a record price for an A-B knife (as far as I know) at \$5,101.01. It was excellent condition but not mint. Third place bidder was under \$2,000 but regardless someone was watching as two weeks later another example appeared for sale.

This seller claimed he had gotten it at the Raleigh, NC flea market (about 15 miles from my house) for less than a cup of coffee (lets say \$1). This knife may have been a little nicer but with high buyer out of the way, bidding stopped at \$2,275.00 and did not meet the reserve. Funny the seller supposedly has less than \$2 in the knife but I guess wanted to get \$5,000.00. I know one thing I would not be too happy being the owner of the first knife having paid over \$5K and another one turning up so soon.

While we are on knives I decided to dive in big and paid the \$455.00 price for the P-123-1 Havre, MT piece. The only other one I know of is in Bill Pattie’s collection and it was missing the master blade. The one I bought was really in great shape. I am just glad the second high bidder did not go another \$20.00.

Corkscrews saw numerous nice examples on the market and a couple were DNMR (Did Not Meet Reserve). Overall it is still a pretty hot market and despite some supposedly rare examples appearing often on the market, prices remain steady.

Top of the next column are two Schlitz Bells (M-37) with different size lettering. Schlitz is much smaller on one than the other. Until I had these two side by side I had never noticed a difference. At one time this type was considered real tough but with the start of eBay, several (at least 10) have been sold. I have a third with the smaller print, so maybe the larger print is hard to find?



John Cartwright picked up the above B-23-10 Golden Glow (Spinner) with a card attached and the message, “May this open the way to greater health . . . Happiness and Prosperity Golden West Brewing Company”. It is pretty amazing the card stayed attached to the opener. A very neat way to advertise by the brewery.



N-9-5 Muehlebach with the Apr 26, 04 patent date. Does anyone else have this opener or another U. S. beer opener with this patent. Does anyone have the patent document?

**“Opener and eBay Trivia”**

A-001-075	Fink	\$55.01	A-042-003	Franklin (EX)	\$42.00	B-018-UL	Besleys Beer	\$52.01
A-005-018	Flecks	\$56.00	A-042-007	Hoster	\$36.75	B-018-999	Harsch Coyote Water Albuquer-	\$69.78
A-005-096	Woolners Bev	\$33.99	A-044-003	Schmidt	\$32.00	B-019-025	Moerlbach	\$46.01
A-007-999	Double Opener w/ Corkscrew in Middle	\$89.88	A-046-001	Rahr	\$41.00	B-019-067	Kessler	\$23.38
A-008-001	Ruppert (EX)	\$29.99	A-059-001	Providence (Fair)	\$81.88	B-021-043	Jones	\$17.59
A-009-004	Leisy (EX)	\$83.00	A-999-999	(Elephant) Chicago WF	\$39.99	B-021-073	Ryans	\$37.00
A-009-023	Leisy (Good)	\$40.59	A-999-999	Chevorlet & Tree Shaped	\$52.99	B-021-135	Schaller	\$20.50
A-009-999	Orange Crush	\$104.50	B-001-014	Jenner	\$87.00	B-021-145	Barbey	\$44.00
A-013-025	Northampton	\$100.99	B-002-015	National	\$34.00	B-021-244	Fauerbach (Fair)	\$32.00
A-013-026	Peoples (EX)	\$128.76	B-002-019	Rising Sun (Brass)	\$138.14	B-021-342	Fitzgerald (EX)	\$18.00
A-015-005	Schreier	\$36.00	B-002-025	Luxus	\$35.99	B-021-379	Lykens	\$47.66
A-015-060	Oshkosh (EX)	\$140.49	B-002-031	Heim (BIN)	\$35.00	B-021-382	Mt Hood	\$14.60
A-017-012	Kamm & Schellinger	\$24.50	B-002-036	Wagner	\$100.99	B-021-513	Berkshire	\$22.99
A-020-011	Deer Park (EX)	\$31.00	B-002-999	Coca-Cola	\$41.50	B-021-569	Koppitz-Melchers (Fair)	\$29.87
A-020-021	Hofbrau	\$27.50	B-002-999	Coca-Cola (EX)	\$51.51	B-022-055	American	\$17.95
A-020-999	Coca-Cola (EX)	\$99.00	B-003-004	Edelweiss	\$36.06	B-022-087	Mathie	\$46.65
A-020-999	Royal Crown Nehi	\$47.69	B-006-007	Furniture City	\$39.99	B-022-093	Crescent	\$34.88
A-021-051	Engesser	\$33.00	B-013-037	San Antonio	\$21.50	B-023-080	Sehring	\$49.99
A-021-132	Trainer	\$22.72	B-013-059	Yough	\$29.00	B-023-089	Jetter	\$32.75
A-025-001	Hamms	\$59.99	B-013-114	Cataract	\$26.00	B-023-8UL	Glennons	\$19.10
A-028-999	Coca-Cola & Pi-Qua-Lity Soda Water	\$134.38	B-014-031	Blue Bell	\$15.00	B-023-999	Dr Pepper (Spinner)	\$302.77
A-029-046	Oshkosh (EX)	\$21.50	B-014-108	Fresno	\$43.69	B-024-091	Boscobel	\$76.56
A-029-999	Chero-Cola None So Good	\$87.00	B-014-125	Sebewaing	\$36.50	B-024-999	Dr Pepper	\$51.01
A-029-999	Pepsi:Cola (Hogstooth)	\$112.50	B-014-155	Anaconda (EX)	\$51.09	B-025-007	Jung	\$21.10
A-029-999	Whistle	\$20.49	B-014-999	Coca-Cola Bethlehem PA	\$42.00	B-027-001	Miller (A Green)	\$31.06
A-030-004	Schotts (EX)	\$26.00	B-014-999	Coca-Cola Cordelle GA	\$41.09	B-034-001	Peoples (EX)	\$27.02
A-030-999	Coca-Cola Sapula & Bristow	\$62.09	B-014-999	Dr Pepper	\$79.79	B-035-008	Sunset	\$20.60
A-035-014	Miller	\$52.00	B-015-001	Old German	\$26.00	B-999-999	B-53 Style with Customized	\$114.49
A-035-046	Chattanooga	\$41.00	B-016-002	Haberle	\$43.00	C-001-007	Budweiser	\$440.00
A-035-999	Coca-Cola Bottling Works Washington, Ind	\$169.49	B-018-060	Phoenix	\$22.00	C-013-188	Reisch	\$20.59
A-040-001	Inland	\$203.50	B-018-275	Greensburg	\$21.50			
A-040-999	Blank No-Ad	\$107.50	B-018-427	Sprenger (Fair)	\$23.61			
			B-018-538	American	\$28.51			
			B-018-667	Bierbauer	\$41.00			



**“Opener and eBay Trivia”**

C-013-194	Star Bev (Good)	\$25.01	F-004-014	Walters	\$27.00	H-006-007	Olympia (Mint)	\$12.00
C-013-221	Hollen	\$25.28	F-005-999	Coca-Cola In Bottles	\$137.50	H-007-006	Knapps (EX)	\$32.56
C-013-222	Jung	\$20.80	F-006-006	Hinchliffe	\$20.50	H-007-006	Knapps (EX)	\$29.50
C-013-238	Lewistown	\$22.78	F-006-015	Bartels	\$24.17	H-008-002	Buckeye	\$20.62
C-023-001	Jackson	\$16.49	F-006-999	Forghams Ginger Ale	\$48.01	H-011-001	Adler Brau	\$25.85
C-023-001	Jackson (EX)	\$28.00	F-008-999	Dr Pepper	\$167.50	I-007-056	R & H	\$15.67
D-001-014	Fauerbach	\$20.50	F-009-001	Cleveland & Sandusky	\$19.49	I-007-084	Lion	\$29.99
D-001-014	Fauerbach	\$22.50	F-009-999	Orange Crush	\$67.99	K-002-003	Jackson	\$51.00
D-001-035	Michel	\$29.99	F-012-999	Horsford Baking Powder	\$139.49	K-012-999	Texas (No Lone Star Ad)	\$141.39
D-001-035	Michel	\$31.45	FBOC-041	Pledgemaster	\$141.59	L-002-001	Anheuser-Busch	\$39.99
D-006-002	Fehrs	\$26.95	FBOC-044	Caddie	\$225.02	L-002-001	Anheuser-Busch (B)	\$81.00
D-999-999	Cats Paw	\$60.00	FBOC-416	Mr Dry (EX)	\$81.80	L-002-001	Anheuser-Busch (EX)	\$76.00
E-004-085	Seitz	\$52.65	FBOC-423	Skull	\$461.78	L-002-002	A-B Malt Nutrine (EX)	\$87.00
E-004-099	Ackermann	\$41.00	FBOC-579	Norwegian (DNMR)	\$153.00	L-002-016	Budweiser Schlitz (Good)	\$69.60
E-004-135	Rainier	\$15.50	G-001-015	Hazelton	\$31.00	L-002-999	Jacksons Napa Soda	\$250.50
E-004-181	Northern	\$15.51	G-001-015	Hazelton	\$20.99	L-004-045	Budweiser (Block)	\$37.51
E-004-189	Renner Products	\$22.78	G-001-062	Kessler	\$16.75	L-004-072	Falstaff	\$54.99
E-004-261	Pioneer (DNMR)	\$35.78	G-001-066	Greenway	\$19.50	L-004-072	Falstaff	\$86.90
E-004-278	Grossvater	\$22.47	G-001-999	Coca-Cola	\$56.55	M-002-999	Pureoxia	\$46.69
E-004-288	Goodwill Malt	\$11.50	G-004-020	Walters	\$12.50	M-003-008	Koehler	\$40.01
E-004-999	Cheerwine / Same	\$47.99	G-005-006	Lion	\$48.00	M-003-018	Stegmaier	\$28.05
E-004-999	Dr Pepper	\$262.75	G-005-032	Yuengling	\$25.28	M-003-019	Zetts	\$41.10
E-004-999	Dr Sed	\$19.39	G-005-999	Coca-Cola (1909) (EX)	\$46.00	M-003-021	Croft OTT	\$27.01
E-005-999	Nehi (Bottle) Huron SD (EX)	\$100.00	G-005-999	White House Ginger Ale	\$47.98	M-003-024	Gunther EX	\$53.86
E-005-999	Pepsi-Cola / Orange Crush (EX)	\$71.70	G-009-055	Potosi	\$59.99	M-003-029	Victor	\$56.40
E-006-071	Diehl	\$18.01	H-001-004	Falls City	\$10.50	M-003-029	Victor	\$43.48
E-006-999	Nehi Lynchburg VA	\$27.00	H-001-014	Yough	\$29.78	M-003-032	Lang	\$36.99
E-008-100	Oakland	\$9.99	H-001-015	Kuebler	\$14.89	M-003-033	Moose	\$126.29
E-009-101	Kessler	\$29.99	H-005-018	Bartels	\$31.55	M-003-036	Piels (Brown)	\$330.00
E-011-999	Coca-Cola	\$51.00				M-003-999	A A O N M S (3 Colors) (EX)	\$14.05
E-014-329	Boyertown	\$36.66				M-003-999	Electro-Chemical (Green)	\$31.12
E-014-533	Prima-Bismarck	\$26.78				M-003-999	Electro-Chemical (Green)	\$36.00
E-014-784	Flocks	\$14.99						
E-026-001	Virginia	\$34.50						
F-001-002	Waukesha	\$66.78						
F-003-999	Barqs Root Beer	\$61.99						

**“Opener and eBay Trivia”**

M-019-999	Coca-Cola (Fake)	\$52.02	N-506-999	Coca-Cola	\$73.04	O-508-999	Nesbitts	\$30.09
M-019-999	Coca-Cola (Fake)	\$26.56	N-506-999	Coca-Cola (MIB)	\$160.00	O-999-999	Starr Flight Milk	\$299.01
M-019-999	Coca-Cola (Fake)	\$236.49	N-507-999	Coca-Cola	\$114.00	P-001-002	Anheuser-Busch	\$137.50
M-019-999	Coca-Cola (Fake)	\$51.00	N-509-999	Coca-Cola	\$42.51	P-001-002	Anheuser-Busch	\$76.00
M-019-999	Coca-Cola (Fake)	\$68.51	N-510-999	Coca-Cola (MIB)	\$86.50	P-001-002	Anheuser-Busch	\$123.50
M-019-999	Tiffany & Co	\$58.50	N-510-999	Coca-Cola (MIB)	\$97.26	P-003-001	Pabst	\$104.50
M-047-001	Arnholt & Schaefer	\$89.99	N-510-999	Coca-Cola (MIB)	\$82.99	P-005-001	Anheuser-Busch	\$83.94
M-058-001	Miller (EX)	\$102.55	N-999-CAN	Kuntz (Knife w/ Master & Opener Blade)	\$132.50	P-008-222	Hoster	\$46.85
M-073-014	Budweiser Becker (EX) (BIN)	\$50.00	O-001-999	Seven-Up (EX)	\$61.00	P-013-001	Schlitz (EX)	\$227.51
M-125-001	Hand	\$42.13	O-002-003	Flecks (EX)	\$27.00	P-014-022	Griesedieck Bros	\$19.49
N-004-999	Jumbo Cola	\$57.87	O-002-003	Flecks (EX)	\$36.21	P-017-008	Lion	\$60.99
N-009-999	Hutchinson Crowns	\$32.00	O-002-999	Cheer Up	\$19.30	P-018-CAN	Calgary (BIN)	\$40.00
N-009-CAN	Edmonton Beer (1904 Patent)	\$125.00	O-002-999	Coca-Cola (EX)	\$27.00	P-019-001	Hamm	\$100.69
N-011-MEX	Tome Coca-Cola	\$23.50	O-002-999	Coca-Cola (EX)	\$52.56	P-019-8UL	Schlitz Agent Marinette WI	\$30.09
N-023-004	Falstaff	\$27.99	O-003-001	Valley Forge (MIB)	\$12.50	P-019-UL	Schlitz Lager Fitchburg MA	\$22.49
N-023-007	Stroh	\$15.51	O-004-025	F & S	\$32.57	P-025-003	Anheuser-Busch (EX)	\$1,550.00
N-024-999	Coca-Cola (EX)	\$78.89	O-004-025	F & S	\$45.98	P-025-003	Anheuser-Busch (EX)	\$554.00
N-024-999	Pepsi-Cola (Mint)	\$92.00	O-005-008	Pearl (EX)	\$41.00	P-025-009	Anheuser-Busch (Missing Red Enamel)	\$128.07
N-032-001	Budweiser (EX)	\$17.26	O-005-008	Pearl (MIB)	\$46.00	P-025-8UL	Anhuser-Busch 2001 (MIB)	\$232.50
N-038-8UL	Primo Hawaii Beer	\$29.97	O-005-011	Acme	\$41.50	P-026-8UL	Anhueser-Busch / Flag (Green)	\$5,101.01
N-040-006	Olympia	\$39.50	O-005-011	Acme	\$26.00	P-026-8UL	Anhueser-Busch / Flag (Green) (DNMR)	\$2,275.00
N-040-017	Budweiser	\$78.00	O-005-015	Stegmaier	\$33.50	P-045-001	Ballantine (DNMR)	\$216.49
N-040-017	Budweiser	\$56.50	O-005-023	Regal Pale	\$73.56	P-082-001	Anheuser-Busch (EX)	\$163.75
N-040-017	Budweiser	\$51.00	O-005-999	Crosley	\$87.50	P-085-009	American (Good)	\$11.50
N-040-032	Michelob	\$51.50	O-005-999	Frigidaire	\$76.01			
N-040-999	Heineken (Double Opener)	\$96.00	O-005-999	Frigidaire	\$113.61			
N-042-8UL	Hamms John Distributor	\$108.49	O-005-999	Frigidaire (EX)	\$64.77			
N-045-8UL	Hamms & Coca-Cola	\$227.50	O-005-999	Grapette	\$41.00			
N-078-001	Gold Top (Good)	\$305.00	O-005-999	Nehi	\$105.83			
N-078-002	Bartels	\$154.27	O-005-999	Pep (EX)	\$125.95			
N-088-001	Dixie	\$18.00	O-005-999	Red Rock Cola	\$98.97			
N-504-999	Coca-Cola	\$132.50	O-005-999	Red Rock Cola	\$160.47			
			O-005-999	Red Rock Cola	\$117.59			
			O-505-999	Coca-Cola (MIB)	\$77.55			
			O-505-999	Orange Crush	\$49.99			
			O-505-999	Whistle	\$140.47			

“Opener and eBay Trivia”

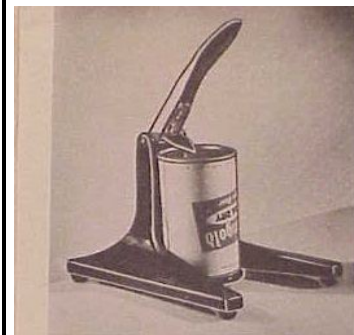
P-090-001	Northern (Mint)	\$39.75
P-112-001	Rahr	\$71.01
P-123-001	Havre (EX)	\$455.00
P-152-001	Hamms	\$67.99
R-006-002	Sprenger (EX)	\$311.84
R-014-CAN	Riedles Beer	\$49.99
R-033-001	Budweiser	\$24.99
Z-002-8UL	Pittsburgh Brewing	\$18.60
Z-002-8UL	Pittsburgh Brewing	\$23.49
Z-Corkscrew	English Burgess 1874 Patent	\$3,900.00
Z-Corkscrew	English Double Post Mechanical (1850s)	\$1,850.00
Z-Corkscrew	English Hulls Royal Club (DNMR)	\$3,055.00
Z-Corkscrew	English Lunds Bottle Grip	\$5,068.38
Z-Corkscrew	English Rotary Eclipse Barmount	\$886.00
Z-Corkscrew	English Twiggs Patent	\$1,047.36
Z-Corkscrew	Folding Pocket Lever Fuldner	\$1,380.00
Z-Corkscrew	French 1886 Pecqu	\$1,325.00
Z-Corkscrew	French 1896 Perille Express (EX)	\$6,766.00
Z-Corkscrew	French Lever Deleuzese Paris (DNMR)	\$2,180.00
Z-Corkscrew	German Celluloid Mermaid w/ Knife/Cutter	\$1,651.00
Z-Corkscrew	German Celluloid Mermaid w/ Opener/Cutter	\$1,158.00
Z-Corkscrew	German Folding Legs (Pearl/Celluloid)	\$915.00
Z-Corkscrew	US 1884 Curley Wood T	\$499.00

Z-Corkscrew	US 1884 Griswold	\$883.99
Z-Corkscrew	US 1886 Hurley Bar Mount Lillienthal San Fran	\$760.00
Z-Corkscrew	US 1888 Gilchrist (Good)	\$999.00
Z-Corkscrew	US 1890 Magic	\$1,283.00
Z-Corkscrew	US 1891 Rapid	\$313.00
Z-Corkscrew	US 1894 Detroit Leg (EX)	\$638.00
Z-Corkscrew	US 1894 Patent Barmount	\$1,044.00
Z-Corkscrew	US 1938 Smythe Hootch Owl	\$2,225.00
Z-Corkscrew	US Drake NY Lever (DNMR)	\$1,347.22
Z-Corkscrew	US Syroco Indian	\$810.00
Z-Corkscrew	US Syroco Indian	\$996.10
Z-Corkscrew	US Syroco Knight	\$2,200.00

Don Bull found the following bar mart ads for 3 different openers.



**TOPPER BOTTLE OPENER AND SEALER** Use this streamlined gadget to open your bottles and seal them too! One side is a handy opener, the other side seals the fizz in your half-finished bottles. Nickel plated. **F255 — \$1.00 each or 6 for \$5.50**



**STATIONARY BEER CAN OPENER** Opens cans instantly with one-hand operation. Extra long handle provides easy, comfortable grip. Made of durable cast iron in a smart black porcelain enamel finish, high polish aluminum handle with chrome blade. 8" x 6" x 3 3/4" high. **G463 — \$9.95**



Okay finally I understand the two varieties of the M-3 Edelweiss and have an easy way to tell the difference. The M-3 Edelweiss comes in four colors and each color comes in two variations. One variation has the word “Beer” as straight letters (top) and the other variation has the word beer as slanted letters (bottom). Not a tough opener to find in any color or variation.



**BAR-A-CUDA** A Whale of a gift! A 5 in 1 bar tool — cracks ice, opens bottles, prys off jar caps, breaks seals, also use as a muddler. In special alloy beautifully finished. **H957 — \$3.50**

From top to bottom N-14 Topper (listed as a beer style), really non-beer. K-5 Bar Mount and bottom the R-7 Shark or “Bar-A-Cuda”. The prices are from the 1950s. Thanks to all who contributed this issue.

**JFO and OTHER CLUBS (Newsletter Name in Italics All Clubs Offer an Annual Convention)**

**American Breweriana Association (ABA):** *American Breweriana Journal* (bi-monthly) on breweriana collecting. Dues \$25.00/year. Chris Galloway, Recording Secretary, P.O. Box 11157, Pueblo CO 81001

**Canadian Brewerianist:** *The Canadian Brewerianist* (bi-monthly) on Canadian Breweriana collecting. Dues \$21.00/year (US Funds). Loren Newman, 2978 Lakeview Trail, Bright's Grove, Ontario, CANADA, N0N 1C0

**Canadian Corkscrew Collectors Club (CCCC):** *The Quarterly Worme* (quarterly) on corkscrew collecting. Dues \$30.00/year. Milt Becker, PO Box 9863, Englewood NJ 07631

**East Coast Breweriana Association (ECBA):** *The Keg* (quarterly) on breweriana collecting. Dues \$25.00/year. ECBA, PO Box 64, Chapel Hill NC 27514

**Figural Bottle Opener Club (FBOC):** *The Opener* (quarterly) on cast iron openers. Color guide book: \$23.85/Non Members or \$18.85/Members. Dues \$20.00/year. Lyle Moreland, 864 Jeanette Ave, Baltimore MD 21222

**Just For Openers (JFO):** *Just For Openers* (quarterly) on all areas of opener collecting (with auction each issue). Dues \$20.00/year. John Stanley, PO Box 64, Chapel Hill NC 27514-0064

**National Association Breweriana Advertising (NABA):** *The Breweriana Collector* (quarterly) on breweriana collecting. Dues \$25.00/year. NABA, PO Box 64, Chapel Hill NC 27514-0064

**SHOWS & CONVENTIONS (Sources For Openers and Corkscrews)**

**2004 Apr 14-17 – 26th Annual Just For Openers Convention – Holiday Inn Fisherman’s Wharf San Francisco CA– All Opener / Corkscrew / Breweriana Collectors Welcomed.**

Contact: John Stanley, PO Box 64, Chapel Hill NC 27514-0064 E-Mail [jfo@mindspring.com](mailto:jfo@mindspring.com)

**2004 Jun 15-19 – 23rd Annual ABA Convention – Red Lion Inn Denver CO – ABA Members Only Only (Saturday Public Show).** Contact Stan Galloway, Executive Director, P.O. Box 11157, Pueblo CO 81001

**2004 Jul 14-17 – 32nd Annual ECBA Convention – Holiday Inn Select Stamford CT– ECBA Members Only (Saturday Public Show).** Contact John Stanley, PO Box 64, Chapel Hill NC 27514-0064, (919) 419-1546

**2004 Aug 4-8– 33rd Annual NABA Convention – Country Inn Hotel Waukesha WI – NABA Members Only (Saturday Public Show).** Contact John Stanley, PO Box 64, Chapel Hill NC 27514-0064, (919) 419-1546

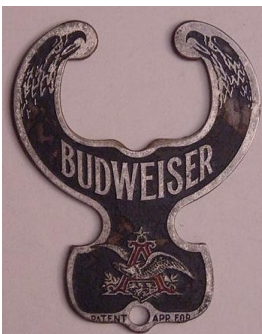
**2004 Sep 11 – 9th Annual K.C. Antique Bottle & Breweriana Show, (American Legion Hall, 499 SW Highway 7, Blue Springs MO). Saturday Show 9AM to 3PM.**

Contact H. James Maxwell, 1050 W Blue Ridge Blvd, Kansas City MO 64145, (816) 942-0291 [hjmesq@kc.rr.com](mailto:hjmesq@kc.rr.com)

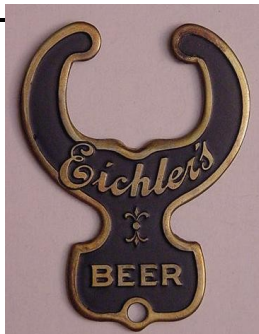
**2004 Sep 23-25 – 22nd Annual Midwest Breweriana Show – Mid America Center Council Bluffs IA – JFO Members Welcomed.** Contact John Mlady (402) 345-7909 or Bill Baburek, (888) 569-7924 E-Mail [bjbaburek@cox.net](mailto:bjbaburek@cox.net)

**2005 Feb 16-19 – 25th Annual Blue & Gray Breweriana Show – Ramada Inn Holidrome Fredricksburg VA – All JFO Members Welcomed.** Contact: John Fisher, PO Box 953, Benedict MD 20612-0953, (301) 274-3340

**2005 Mar 13 – Annual Spring Breweriana Show – Sokol Hall 2234 S 13th St Omaha NE – 9AM to 3PM — Saturday Night Hospitality Room Comfort Inn (I-80 & 13th St Exit) — JFO Members Welcomed.** Contact John Mlady (402) 345-7909



On the left is the C-1-7 Budweiser that I paid \$440 for on eBay in January. I know of only two others. On the right is the C-1 -10 that Gary Deachman traded back to me at the Blue-Grey show in February. It is very unusual that it is brass not steel like other C-1s. I believe Don Bull sold a C-1 Scheidt that was brass back in his 1989-90 Auctions. This is the only example of the Eichler that I know of. Two very tough and desirable openers. Gary you are completely forgiven for the “\$5 Bags”.



**WANTED (Please remember there is no charge for Ads)**

**Swap Openers: Trade List for Trade List.** Scott Sherman, W5268 Quarry Rd Appleton WI 54913, (920) 954-1168

**Golden Glow Openers: A-1-9, B-23-149, E-14-787, O-4-22 & A-12-12 Grace Bros.** Also any Breweriana from Rainier Brewing Co (Seattle WA, LA CA, SF CA), Golden West Brewing Co of Oakland CA & Port Townsend Brewing Co. of Port Townsend WA. Buy/Trade. John Cartwright, 1548 Via Arroyo, Paso Robles CA 93446, (805) 226-9270

**A-22-1 Ballantine.** Great Trades Available. Jack Ford, 5351 Boyd Ave, Oakland CA 94618, (510) 655-5393

**A-9s: 8 Eureka, 21 Amber, 26 Penn, 46 Tivoli, 29 Waldorf, B-9-2 Salinas, B-9-10 Ambrosia, B-7 (Beer), B-22 (Beer), B-31-7 Billings, B-31-8 Valley Brew, C-21-6 Grand Rapids, D-16-1 New Kentucky, E-17s: 1 American, 7 ISD, 9 Everett, 12 Lion, G-1s: 2 Berghoff (Bottle), 26 Yoerg, 27 Alpen Brau, 31 Griesdieck Bros, 51 Lubeck, 53 Poth, 65 Southern Pacific, 68 Glennon, 69 Leidiger 3-V Bev, 70 Fox Lake, G-5s, H-1s: 8,12,21,24,26,27,31,34,35,39, 42,44, O-1-2 Leidigers** John Stanley, PO Box 64, Chapel Hill NC 27514

**A-17 "Wilber Brewery" & P-8 Corkscrew "Omaha Brewing Association" (Excellent Condition Only).** Will purchase outright. John Mlady, 1506 S 25th St, Omaha NE 68105-2611, (402) 345-7909

**A-43-Dixie.** (Buying). Marc Benjamin, 167 Nixon Beach Rd, Edenton NC 27932, (919) 482-2099

**B-45, B-66, I-7, P-72, P-100, R-14 types with a Corkscrew (Beer/Non-Beer) & Silver Top Beer Openers.** Herb Danziger, 550 Cherry Ct, Birmingham MI 48009-1459, (810) 646-9470

**Beverwyck-B-18-499, B-21-147, C-10-48, E-9-87, F-6-87, I-2-2, I-14-1, J-5-5a, Dobler-I-11-232, I-18-6, Fitzgerald-C-20-12, I-12-23, I-18-9, Hedrick-E-9-55, Hinckel-P-30-1, Quandt-P-8-118, P-35-2, Stanton-A-20-13, C-12-103, C-18-24, Isengart-E-8-59, Stoll-B-18-380, E-8-107, Misc-A-28-40.** Buying. Bill Laraway, 627 Kenwood Ave, Delmar NY 12054

**"E"s! Have Trade List (Various Types) or Will Buy. Top 10 List: E-6-208 Old Lancaster, E-14-832 Uneeda, E-7-77 Lima, E-4-207 Yosemite, E-14-626 Modesto, E-16-11 Ganser, E-18-4 American, E-8 #24 & #25 New Braunfels, E-23-11 Evansville.** Larry Moter, 10149 Michaels Rd, Woodford VA 22580, (804) 448-3928 E-Mail acneca@aol.com

**Bond and Lillard Openers (would like to buy). Have A-29, would like any others. Lillard is a family name.** George Love, 4301 Forest Plaza Dr, Hixson TN 37343, (423) 877-6006

**E-2-19 Yuengling Por-Tor (HELP!!!!)** Harold Queen, 1001 Centre Ave, Jim Thorpe PA 18229, (717) 325-2612

**"E" Type Openers Wanted. Will Trade my "C", "E" and "I" Types.** Send trade list and I'll send my list. Ralph Tewksbury, 84 Wildwood Dr, Parkersburg WV 26101 (304) 863-3627

**Wanted I-2s # 1 Atlas, 2 Beverwyck, 3 Drewrys, 7 Mitchell, J-8s #13 Ballantine, 14 DuBois. Cash or Trade.** Ben Hoffman,

213 Simmons Rd, Perkiomenville PA 18704, (610) 287-8243 or Email benbey@netcarrier.com

**B-2-22 Haenle, B-22-94 Haenhle, G-3-14 Silver Foam, also "I-5"s, "E-14"s, "B-24"s, "G-1"s. Send for Want List.** John Patton, 9224 Sugarloaf Dr, Redding CA 96001

**Will Buy or Trade from My Collection for these Openers: I-7-45 Anheuser-Busch Dry Malt, I-7-46 Berghoff, I-7-37 Schaefer, E-11-18 Arrow, H-6-1 Blatz, H-6-3 Olympia, H-6-4 Pabst, H-6-9 Pabst.** Tom Gormally, 22555 Cardiff Dr, Santa Clarita CA 91350, 661-291-1392

**I-7 Roger Williams to complete I-7 Collection. Extensive trade list or cash.** Hale Milano, 506 Springhouse Road, Camp Hill PA 17011-1454, (717) 737-5067

**O-5 Beer & Soda. Have several mint M-18 Budweiser to Trade or Pay Cash if Price is Right.** C J Coursey, 2865 Fleetwood Cove, Greenville MS 38701-8015, (662) 332-4060

**Atlas Prager Openers: A-21-46, A-21-69, B-24-58, B-24-103, B-28-2, E-5-70, E-7-1, E-8-32, E-14-755, E-14-657, E-14-719, F-4-36, H-2-166, N-10-6, N-10-7, O-8-3, O-8-17, P-66-4.** Will Buy . Dave Lendy, 1927 Allen Dr, Geneva IL 60134, (630) 208-6950

**Bottle Shaped and/or Openers with Bottle on them.** Gary Deachman, PO Box 438, North Woodstock NH 03262

**Chester PA Openers: B-18-192 Peerless, B-21-557 Haser, C-12-71 Chester, P-7-46 Stoeckle, and A-17-14 & A-43-3 Soda Openers with ad for "Penn Brand".** Joseph Knapp, 211-A Berbro Ave, Upper Darby PA 19082, (610) 352-5055

**Cigar Box Openers: HT-5---SHM-2,6,13---DHM-13,15---RBO-1---HKH-7,9---HOR-3---RND-13---SQR-4---NL-6---BB-13,16,17,18---PKT-1,2,5,6,8,9,10---SEP-9---MIS-5,8.** Ken Hoesch, PO Box 299, Zeeland MI 49464-0299

**Hartford, Connecticut Openers Wanted esp. E-8-61 Fischer & P-17-4 Columbia.** Edward Johnson, 1290 Poquonock Ave, Windsor CT 06095, (860) 688-6795

**Corkscrews-Cork Pullers-Syroco (especially Golden Knight and Clown)-Early US Patents-Anything Unusual.** Have many corkscrews to trade or Pay a Competitive Price. Please send description, sketch, photocopy, etc to Paul Luchsinger, 1126 Wishart Place, Hermitage PA 16148 (Tel/Fax 724-346-2331)

**Corkscrews & Tin Can Openers: Beer Openers for Trade.** Joe Young, 36 S. Weston Ave., Elgin IL (847) 695-0108

**Corkscrews, Beer Advertising Letter Openers, Beer Advertising Knives, & Postcards depicting Corkscrews.** Please send description, photo, sketch, photocopy, or tracing of what you have and advise price wanted. Don Bull, PO Box 596, Wirtz VA 24184, (540) 721-1128, E-Mail corkscrew@bullworks.net

**Corkscrews: Esp. Walker's "Waiters & Hallboys" and old Williamson wire shafted "T"s with attachments to wood handle (such as brushes/wire cutters).** John Vlossak, 1044 East Eldorado St., Appleton WI 54911, (414) 739-2789

**WANTED (Please remember there is no charge for Ads)**

**Figural Corkscrews and any WASHINGTON D.C. Openers and/or Corkscrews.** Sandra Emme, PO Box 1454, Upper Marlboro MD 20773, (301) 627-8207

Openers from **Jamestown Brewing Co, Kuhn's Beer, Chautauqua Brew, Monessen, PA, Independent Brewing Co, Schaefer, & all Cleveland Beers.** Ed Schaefer, 6612 Tannin Ln Apt B, Naples FL 34109, (941) 254-8828

**Joliet IL Openers: Citizens: B-14-97, C-17-69, E-1-32, E-3-12, E-4-175, K-5-6, O-10-1, P-121-1, Porter: A-17-24, B-18-618, B-21-198, B-21-199, B-21-561, F-6-9, F-6-73, Sehrings: B-18-587, G-9-39.** John Bitterman, E-Mail jebitter@aol.com

**Minnesota Openers: A-1-73, A-4-19, A-14-2, A-21,63,77,120, 128, A-23-9, A-29-22, A-33-5,7, A-45-1, B-7-3,21, B-13-12, O-1-1, O-2-14, O-6-4, O-20-1, P-7-13, P-22-5, P-146-1.** Pat Stambaugh, 718 S Lakeshore Dr, Lake City MN 55401

**"M-1 & M-2" Lithographed Openers (Excellent Condition Only). Openers/Related Items to any Jung Breweries.** Paul Jung, PO Box 425, Bechtelsville PA 19505, (610) 367-0239

**Montana & Idaho Beer/Brewery Openers & other Breweriana. Also looking for H-8 & L-1 Openers to complete collection.** Steve Armstrong, PO Box 741, Kamiah ID 83536, E-Mail sunset@cybrquest.com

**Montana Openers-Corkscrews:** I need 39 of the 211 in the JFO Handbook. A-21-84,A-43-5,A-45-1,A-45-2---B-5-29,B-18-370,B-18-479,B-18-481,B-18-331,B-18-538,B-21-471,B-21-142,B-21-488,B-21-522,B-22-112,B-52-5---E-1-52,E-2-29,E-4-325,E-9-29,E-13-29---F-8-9---M-29-63---N-38-4---P-7-41,P-8-160,P-8-56,P-17-11,P-18-3,P-18-6,P-62-2,P-66-6,P-83-1. Will trade or purchase. Also interested in any Montana advertising openers (non-Beer). Bill Pattie, PO Box 1126, Big Timber MT 59011, (406) 932-5422

**New York State Openers: E-4-345 Koch, G-1-67 Hupfel. Will Buy or Trade.** Mark Barren, 6141 Tachi Dr., Newfane NY 14108-9517, (716) 778-9724

**J-6s: 2-4-8-15-16-17-18-19-21-22-23-25-27-28-29-33-35-36-37-39-40-42-43-45-46-47, Will Pay \$4 Each plus Postage.** Ollie Hibbeler, 535 Villa Piazza Ct, O'Fallon MO 63366

**Pinney Beverage Items Wanted:** Pens & Pencils, Bottle & Can Openers, Any item imprinted with **Pinney Beverage Company, Salt Lake City, Utah.** Dave Pinney, 1766 Red Barn Road, Encinitas CA 92024, (760) 753-8151, Email: davecent@tmisnet.com

**Rahr Malting Company:** Looking for openers or any items. John Seidl, 4324 Granby Way, Marietta GA 30062, (404) 631-2334, E-Mail jseidl@dc.com

**Schlitz Openers: A-7-22, A-20-52,42,35,51, A-21-58,8,115,79, A-23-7, A-29-58, A-35-30,45, A-53-6, plus A-17-27 Rahr. Will buy or possibly trade.** Mike Krejci, W19103 Lake St, Aniwa WI 54408, (715) 449-3523, E-Mail pigpen1952@yahoo.com

**Help!!! need 9 of 45 known Spokane, Washington Openers to complete collection: B-13-61 Bohemian Club, B-14-109**

**Spokane, E-3-58 Bohemian Club, E-6-137 Golden Age, E-7-6 Gilt Top, E-14-475 Bohemian Club, N-44-1 Inland & P-19-16 New York. Will trade heavy or pay your price.** Nick Johnson, 4708 Spiser Ln, Wichita Falls TX 76302, (940) 322-1696

**Adler Brau Openers: B-18-491, E-4-262, H-11-1, I-17-259, N-83-1. D-9 Openers: #3, 5,9,10, 12, 14, 15, 16, 17, 18, 19. Also Looking for H-7 & H-11 Openers.** Russ Adler, W11307 Cty Rd V, Lodi WI 53555-9628, (608) 592-5766

**Starr Openers to trade, send for current list.** Don Stinson, PO Box 105, 143 Haskins Point Road, Seeley's Bay, Ontario Canada, K0H 2N0, (613) 387-3100, Email: rideaubreeze@bellnet.ca

**I-7 Vaughan's Quick & Easy, I-7 45,82,46,63,64,79,78,54,68, 30,55,34,56,57,58,39,72,81.** Will Trade other I-7s. Jim Pokrywha, 279 Pearl St, Seymour CT 06483, jppokrywka@aol.com

**Wisconsin Brewery Openers: Knapstein, Hortonville, Princeton, Hochgreve, Bleser, Shawano & Rahr; esp A-17-27 Rahr.** Dan Mayville, E7446 County Road H, Fremont WI 54940-9747

**BUY - SELL - TRADE**

Pat & Louy Stambaugh  
718 South Lakeshore Drive  
Lake City, Mn. 55041  
**651-345-4446**

Red Wing Stoneware - Old Oak Furniture  
Minnesota Breweriana - etched or enameled glasses

**Just For Openers "Auction Guidelines"**

**Please Note: Fee of 15% Will Be Charged on Consignments**

This auction is a service to members of JFO. Submit consignments by sending a graded inventory list. Reasonable minimum bids can be established for good items. Any openers submitted for the auction should have a minimum value of \$3.00. Money realized will be sent 4 to 5 weeks after closing date.

**Please Write First Before Sending Consignment Material.**

**When Bidding Please! give the Lot Number and a Short Description with each bid.**

**Please remember to at least sign your name on each auction page and keep a copy.**

**Please, Please, Please SEND IN YOUR BID SHEETS EARLY & NOT AT THE LAST MINUTE**

**SELLING (Please remember there is no charge for Ads)**

**Beer Openers For Sale. Send SASE for List.** Ed Eichhorn, 2010 Sandia Ct, Lusby MD 20657-4018

**JFO Back Issues: 1978-2003 \$100 or 1994-2003 (\$60) (US Shipping Only)** John Stanley, PO Box 64, Chapel Hill NC 27514

**"American Breweries II":** by Dale Van Wieren. **Over 18,000 entries for nearly 8,000 brewing firms, tracing names, addresses, and dates of operation. (\$19 Priority Mail).** John Stanley, PO Box 64, Chapel Hill NC 27514

**2004 Handbook of United States Beer Advertising Openers and Corkscrews (contains 15,000 Listings & pictures 1100 Types (Black & White Copies)) . \$20 sent priority mail.** John Stanley, PO Box 64, Chapel Hill NC 27514

**"Just For Openers" "A Guide to Beer, Soda, & Other Openers" by Donald A. Bull & John R. Stanley, 160 Pages, 380 Color Pictures, \$26.95 plus \$3.95 shipping (US Only).** Bullworks, PO Box 596, Wirtz VA 24184

**"Soda Advertising Openers" by Donald A. Bull & John R. Stanley, 160 Pages, Over 275 Color Pictures & 2500 Listings, \$26.95 plus \$3.95 shipping (US Only).** Bullworks, PO Box 596, Wirtz VA 24184

**"Beer Advertising: Knives, Letter Openers, Ice Picks, Cigar Cutters and More" by Donald A. Bull, 180 Pages, Over 500 Color Pictures, \$26.95 plus \$3.95 shipping (US Only).** Bullworks, PO Box 596, Wirtz VA 24184

**"The Ultimate Corkscrew Book" by Donald A. Bull, Hardcover Book Weighs 5 Lbs, 744 Color Photographs, 3746 Corkscrews with Values, \$75.00 plus \$8.80 shipping (US Only).** Bullworks, PO Box 596, Wirtz VA 24184

**"Bull's Pocket Guide to Corkscrews" by Donald A. Bull, 190 Pages, Over 200 Color Photographs, 942 Corkscrews with Values, \$18.00 plus \$3.95 shipping (US Only).** Bullworks, PO Box 596, Wirtz VA 24184

**"Boxes Full of Corkscrews" by Donald A. Bull, 236 Pages, Over 836 Color Photographs, 95% New Information with Values, \$47.95 plus \$7.70 shipping (US Only).** Bullworks, PO Box 596, Wirtz VA 24184

**"ANRI Woodcarvings: Bottle Stoppers, Corkscrews, Nutcrackers, Toothpick Holders, Smoking Accessories and More" by Philly Rains and Donald A. Bull, 272 Pages, Over 800 Color Photographs picturing more than 2500 ANRI Carvings with detailed information, \$62.95 plus \$7.70 shipping (US Only).** Bullworks, PO Box 596, Wirtz VA 24184

**"Hometown Beer - A History of Kansas City's Breweries" by H James Maxwell & Bob Sullivan Jr, Hardcover Book with 300 Pages, 585 Pictures (352 in Color) and Illustrations, \$39.95 (New Reduced Price) Postpaid in US.**  
H. James Maxwell, 1050 West Blue Ridge Blvd, Kansas City MO 64145-1216

**"Figural Bottle Openers Identification Guide" by FBOC Club, 148 Pages, 67 Color Pages, with Rarity Guide, \$20.00 plus \$3.85 priority mail shipping (US Only).** Lyle Moreland, 864 Jeanette Ave, Baltimore MD 21222

**Newsletter Content and Deadlines for Sending in Articles and Receiving Newsletter**

	January Issue	April Issue	July Issue	October Issue
<b>Newsletter Content</b>	<b>New Additions to Handbook</b>	<b>Membership Directory</b>	<b>Convention Highlights</b>	<b>New Discoveries</b>
<b>Articles</b>	<b>December 1st</b>	<b>March 1st</b>	<b>June 1st</b>	<b>September 1st</b>
<b>To Members By</b>	<b>January 31st</b>	<b>April 30th</b>	<b>July 31st</b>	<b>October 31st</b>

**JFO AUCTION GUIDELINES**

Send Bids To: John Stanley, PO Box 64 Chapel Hill NC 27514

***Auction Rules***

***(Note: No Phone Bidding)***

- 1) \$1.00 Minimum Bid on Each Lot, Only 1 Bid per Lot Allowed
- 2) Openers Sold to Highest Bidder (Identical Bids: Earliest Post-marked Bid Wins)

- 3) 7 Days to Return Openers if Not Satisfied, Shipping and Handling Extra
- 4) Openers Shipped Upon Payment (Please Pay within 7 Days of receiving Invoice) (Please make checks payable to: John Stanley)
- 5) Results Shown Next JFO Issue (Winning Bidders receive Results with Invoice)

**Grading (G):**

1-Poor 2-Fair 4-Good 6-Very Good 8-Excellent 9/10-Near Mint to Mint

(UL-Unlisted in 2003 Handbook (Full Wording Will Be Given) 999-Non USA Beer)

**JFO # & Key Words (Brewery or Beer Name from Full Description) from 2004 Handbook of United States Beer Advertising Openers and Corkscrews**

**Dave Lendy Fixed Price Soda List, Shipping \$2 Per 4 Openers, Send To John Stanley**

E-001-001	Almanaris	6	5.00	E-005-8UL	Drink Tyme Beverages 11 Spruce Slip Joliet, Ill. Phone 2-3562	4	8.00	E-014-094	Lynbrook Bev	6	5.00
E-001-002	Bay View Sodas	4	5.00					E-014-100	Mission Orange	8	5.00
E-001-003	Black Bear Bev	4	10.00	E-005-8UL	Harra Beverage Home of "Goody" Soft Drinks Beer-Liquor-Wines 529A Ceape Ave. - Oshkosh Ph. 235-2260	6	5.00	E-014-118	Pepsi-Cola	8	8.00
E-001-011	Reimer Bev	2	3.00					E-014-121	Pepsi-Cola Cincinnati	6	5.00
E-001-018	Silco Waukesha	6	5.00	E-005-8UL	Wert's Beverages call 51-R-2 - Tipton for your favorite beer	6	5.00	E-014-124	Pepsi-Cola	8	8.00
E-001-020	Standard Glacier Club	2	8.00					E-014-126	Petermann Bev	6	5.00
E-002-004	Billy Baxter	8	3.00	E-006-014	Silver Springs Ginger Ale	4	5.00	E-014-127	Phillips Bros	4	5.00
E-002-016	Pureoxia	6	5.00	E-006-020	Virginia Dare	8	8.00	E-014-128	Plitt & Son	4	5.00
E-003-009	Silver Brook Bev	6	5.00	E-006-8UL	Drink Gosman's Ginger Ale / Same	6	10.00	E-014-129	Poland Water	2	5.00
E-003-010	Stoners Ginger Ale	6	3.00	E-007-005	Coca-Cola	6	10.00	E-014-137	Rock Spring Bev	8	10.00
E-003-010	Stoners Ginger Ale	8	5.00	E-009-021	Gosmans Ginger Ale	6	5.00	E-014-139	Royal Crown Cola	4	5.00
E-004-001	Arcadia / Vernor	6	10.00	E-011-005	D & Z Bot	6	5.00	E-014-139	Royal Crown Cola	4	5.00
E-004-005	Belfast Ginger Ale	4	10.00	E-011-012	Phillips Bros	4	5.00	E-014-145	Saratoga	4	5.00
E-004-011	Bobby Burns	6	10.00	E-011-013	Phillips Bros	8	5.00	E-014-147	Brooks 7 Up	4	5.00
E-004-015	Chicago Bev	2	8.00	E-011-014	Popular Club Ginger Ale	6	5.00	E-014-147	Brooks 7 Up	6	5.00
E-004-025	Coleman Ginger Ale	6	8.00	E-013-001	Coca-Cola	4	3.00	E-014-150	Seven-Up	8	5.00
E-004-027	Crystal Rock Water	4	5.00	E-013-001	Coca-Cola	6	3.00	E-014-154	Silver Spring Ginger Ale	6	5.00
E-004-029	Double Eagle Ginger Beer	8	10.00	E-013-002	Coca-Cola	6	3.00	E-014-155	Simpson Spring Bev	6	5.00
E-004-032	Duffy (Var A)	6	8.00	E-014-018	Bubble Up (Copper)	6	5.00	E-014-157	Society Bev	2	5.00
E-004-056	Kohlman Bev	4	8.00	E-014-038	Cott	8	5.00	E-014-159	Sparkling Jump	6	8.00
E-004-072	Moxie / Pureoxia	6	10.00	E-014-040	Crystal Bev	6	5.00	E-014-166	Sun Ripe	4	5.00
E-004-102	Saegertown Ginger Ale	8	10.00	E-014-041	Dads	6	5.00	E-014-167	3V Cola	8	8.00
E-004-103	Schille	4	10.00	E-014-048	Double Eagle Ginger Beer	4	8.00	E-014-170	Tom Tucker Ginger Ale	4	8.00
E-004-107	Seven-Up - Moxie	6	8.00	E-014-070	Harwood Bev	6	8.00	E-014-171	Towne Club	6	8.00
E-004-109	Silver King Ginger Ale	4	10.00	E-014-077	Hydrox Bev	6	5.00	E-014-177	Vernor	6	5.00
E-004-110	Silver Plume Bev	2	8.00	E-014-080	Keck	6	5.00	E-014-8UL	Epping's Beverages / Same	6	10.00
E-004-112	Temple Hill Ginger Ale	8	10.00	E-014-084	Kramer Bev	6	10.00	E-014-8UL	White Star Soda Co. Los Angeles, Calif. / Same	6	12.00
E-004-113	Try-Me	6	10.00	E-014-087	Lemmy	2	5.00	E-021-002	Pureoxia	2	8.00
E-005-028	O-S Grape	4	5.00					F-004-001	Ahrens Pale Dry Ginger Ale	8	10.00
E-005-041	7Up	6	12.00					F-004-002	Arlington Club	6	8.00
								F-004-011	Delux Cola	4	8.00
								F-004-028	Pepsi-Cola	6	8.00



**Results of January 2004 JFO Auction Closing February 25, 2004 Thanks to all 38 Bidders**

1	A-009-004	Leisy IL (Min \$30)	8	42.77	30	A-029-003	K-B IL	4	1.15	55	B-014-018	Goebel MI	6	7.01
2	A-009-032	Frieds Malt & Hop PA (Min \$30)	6	31.10	31	A-029-007	Rainier CA	6	6.95	56	B-014-019	Goetz Var A MO	6	2.00
3	A-009-999	Dix Café Hagerstown, MD	6	24.01	32	A-029-009	Schlitz WI	8	6.26	57	B-014-019	Goetz Var B MO	6	2.55
4	A-010-001	Muehlebach MO (Opener Hook Broke Off)	4	25.00	33	A-029-014	Potosi WI	4	10.52	58	B-014-019	Goetz Var C MO	6	2.55
5	A-012-004	Pointer IA	10	7.51	34	A-029-018	Pabst WI	6	6.15	59	B-014-019	Goetz Var D MO	8	2.55
6	A-013-007	Tannhaeuser PA (Min \$30)	6	42.77	35	A-029-023	Potosi WI	8	15.50	60	B-014-025	Grand Prize TX	6	12.15
7	A-014-001	Rainier CA (Min \$50)	4	53.00	36	A-029-031	Butte MT	8	16.50	61	B-014-030	Kamms (Var A) IN	6	5.01
8	A-015-011	Leisy IL	4	18.63	37	A-029-052	Independent WI	6	16.50	62	B-014-037	Pittsburgh PA	6	5.01
9	A-015-024	Peoples IN	6	21.10	38	A-029-UL	COMPLIMENTS OF THE ENGEL SUPPLY HOUSE BOTTLER'S SUPPLIES 242 STATE STREET ROCHESTER, N. Y. / SAME	4	6.51	63	B-014-038	Pittsburgh PA	6	5.01
10	A-017-014	Capital City MT	6	35.00	39	A-029-UL	F. C. ROCHE & SONS DEALER IN MALT AND HOPS 12605 WOODROW WILSON AVE LONGFELLOW 5312 15120 WYOMING AVE. HOGARTH 0364	2	4.51	64	B-014-039	Mathie-Ruder WI	6	8.76
11	A-017-999	Compliments of Son's Café Holly Colorado	4	8.01	40	A-032-001	Wooden Shoe OH (Min \$25)	6	28.77	65	B-014-041	Schmidt	4	2.51
12	A-020-016	Century CO	6	21.10	41	A-035-048	Huebner MI	6	21.10	66	B-014-085	Gluek MN	4	2.65
13	A-021-001	Becks NY	6	6.15	42	A-038-004	Independent Silver Top PA	4	20.00	67	B-014-089	Goetz MO	8	8.50
14	A-021-002	Blatz WI	2	1.15	43	A-041-001	Medford WI (Min \$50)	4	51.77	68	B-014-090	Goetz MO	8	3.65
15	A-021-010	Ziegler WI	4	17.50	44	A-044-003	Schmidt PA	6	30.50	69	B-014-106	Cerva MO	6	7.10
16	A-021-011	Cataract NY	8	12.50	45	A-045-999	Blank No Ad	6	5.77	70	B-014-109	Goetz WA	6	8.50
17	A-021-015	Northern WI	6	22.50	46	B-001-005	Pittsburg (Steel)	4	14.01	71	B-014-110	Goetz MO	8	6.26
18	A-021-026	Hoch Brau	6	12.50	47	B-001-999	Bacon Pure Non-Alcoholic Beverages Harrisburg, Pa.	4	15.01	72	B-014-149	Goetz IA	6	20.00
19	A-021-039	Foss-Schneider	6	8.50	48	B-002-016	Phoenix NY	6	25.51	73	B-014-175	Montana MT	8	20.00
20	A-021-054	Rahr WI	6	22.50	49	B-002-999	J. K. Aldrich Advertising Metal Material PO Station T New York	6	70.75	74	B-014-184	Boulevard MO	10	3.65
21	A-021-083	Golden Glow CA	6	6.50	50	B-012-004	Hoster CO	8	63.00	75	B-018-003	American	8	7.05
22	A-021-085	Prior PA	8	18.75	51	B-013-009	Iron City PA	6	3.76	76	B-018-007	Berlin	6	16.52
23	A-021-112	Manhattan WI	6	17.50	52	B-014-001	Atlas IL	4	3.01	77	B-018-010	Bushkill PA	4	4.15
24	A-021-999	Blue Moon Bar Fine Liquors 428 So. Wabasha St. Paul, Minn.	10	4.65	53	B-014-012	E B MI	8	4.51	78	B-018-017	Cooks IN	4	5.01
25	A-027-001	Doelger NY (Min \$50)	6	52.71	54	B-014-013	Feckers IN	6	4.01	79	B-018-019	Daeufer PA	6	8.11
26	A-028-002	Consumer NY	4	6.50						80	B-018-020	Dawson MA	6	20.00
27	A-028-003	Deppen PA	6	7.20						81	B-018-023	Dubuque IA	4	4.15
28	A-028-011	Franklin OH	6	20.00						82	B-018-027	Eulberg WI	6	26.26
29	A-029-002	Eberle MI	4	6.50						83	B-018-035	Grand Rapids MI	4	10.50
										84	B-018-039	Inter-State IA	4	25.85
										85	B-018-040	Kamm & Schellinger IN	4	20.00
										86	B-018-045	Manitowoc Prod WI	4	2.51
										87	B-018-048	Minneapolis MN	2	3.01

**Results of January 2004 JFO Auction Closing February 25, 2004 Thanks to all 38 Bidders**

88	B-018-061	Piels NY	6	7.05	118	B-018-999	Bethlehem Beverage & Cold Storage Co. PA	6	4.01	146	C-031-005	Bola OH	4	35.06
89	B-018-063	Pointer IA	6	7.05						147	E-003-042	Standard NY	4	1.65
90	B-018-065	Rainier CA	4	5.00	119	B-018-999	Heptol Splits	1	2.01	148	E-004-075	Rochester NY	6	3.12
91	B-018-076	Stegmaier PA	6	8.50	120	B-018-999	Key To Platteville Bottling Wks. Roseliep & Sheperd WI	6	10.52	149	E-005-049	Drewrys IN	6	5.50
92	B-018-079	Thieme & Wagner IN	2	3.01	121	B-018-UL	Evans Ale NY	4	15.00	150	E-005-UL	BALLANTINE ALE & BEER DU-BOIS...BUDW EISER F. & S. PILSENER BEER WELLS DISTRIBUTING CO. TELEPHONE 2157 2 JACKSON ST., WELLSBORO, PENN.	6	15.00
93	B-018-104	Gold Bond OH	2	7.02	122	B-019-031	Rainier WA	4	7.01	151	E-014-044	Cataract NY	6	5.15
94	B-018-118	Schmidt MN	6	7.05	123	B-019-098	Muessel IN	6	8.01	152	E-014-165	King Cole IL	6	8.00
95	B-018-132	Blatz WI	4	6.12	124	B-019-170	Minneapolis MN	4	6.01	153	E-014-235	Regal CA	6	5.00
96	B-018-138	Gund WI	4	6.12	125	B-021-037	Independent PA	4	6.15	154	E-014-237	Regal CA	6	2.11
97	B-018-146	Schiller Bros MO	6	7.05	126	B-021-102	Calumet WI	4	20.00	155	E-014-239	Renner OH	6	2.11
98	B-018-190	Home IN	6	8.50	127	B-021-119	Marion OH	4	11.28	156	E-014-241	Rhineland WI	6	2.11
99	B-018-197	Kamm & Schellinger IN	6	8.50	128	B-021-149	Chattanooga TN	4	11.01	157	E-014-242	Rochester NY	6	3.75
100	B-018-203	Narragansett RI	6	7.05	129	B-021-186	Northern WI	4	8.01	158	E-014-245	Royal 58 MN	10	2.15
101	B-018-221	Sebewaing MI	6	20.00	130	B-021-329	National PA	4	20.00	159	E-014-246	Ruppert NY	6	1.20
102	B-018-226	South Bend IN	2	3.01	131	B-022-004	Falstaff MO	6	7.05	160	E-014-265	Schutz & Hilgers MN	6	39.60
103	B-018-227	Steinle OH (Very Worn)	1	20.00	132	B-023-020	Miller WI	6	3.01	161	E-014-267	Southern Select TX	8	2.11
104	B-018-257	Commonwealth MA	6	18.75	133	B-023-029	Terre Haute IN	8	8.50	162	E-014-268	Spoetzi TX	8	1.65
105	B-018-259	Cream City WI	2	5.01	134	B-023-032	Alpen Brau MO	6	8.50	163	E-014-272	Standard NY	4	0.65
106	B-018-274	Goetz Gozo MO	4	20.00	135	B-023-062	Brucks OH	6	7.05	164	E-014-273	Standard NY	4	3.25
107	B-018-282	Indianapolis IN	8	8.50	136	B-024-009	Dawson MA	8	6.75	165	E-014-275	Stegmaier PA	6	1.65
108	B-018-284	Kamm & Schellinger IN	4	4.15	137	B-024-026	Narragansett (Var B)	6	7.05	166	E-014-276	Stegmaier PA	4	4.50
109	B-018-297	Reading PA	2	6.11	138	B-024-031	Schmidt MN	2	10.00	167	E-014-277	Sterling IN	6	11.78
110	B-018-310	Seitz PA	2	6.11	139	B-024-033	Schmidt (Small) IN	6	7.05	168	E-014-280	Sunshine PA	4	3.20
111	B-018-324	American	4	6.50	140	B-027-001	Miller (Brass) WI	6	41.11	169	E-014-281	Sunshine PA	4	0.65
112	B-018-329	Fauerbach WI	2	10.52	141	B-033-001	Schoenhofen IL	2	13.51	170	E-014-284	Tivoli CO	6	2.11
113	B-018-361	Hamms MN	4	10.00	142	B-039-001	Bushkill PA (Min \$60)	6	63.77	171	E-014-285	Topper NY	10	2.11
114	B-018-408	Calumet WI	6	30.30	143	C-010-024	A B C CA	8	1.15	172	E-014-286	Trommers NY	4	0.65
115	B-018-484	Horlacher PA	6	10.00	144	C-013-999	Refresh with a "Goldcrush" Mineral / Same	8	12.35	173	E-014-291	Utica Club NY	10	3.90
116	B-018-517	National MI	6	10.05	145	C-017-999	Roma Beverages by Roma since 1907 8 Delicious Flavors (Bottle)	8	3.12	174	E-014-292	Vernon CA	6	2.11
117	B-018-550	Schuster MN	2	20.00						175	E-014-295	Walter WI	8	0.65
										176	E-014-296	Wausau WI	6	2.51
										177	E-014-298	West Bend WI	6	3.75

**Results of January 2004 JFO Auction Closing February 25, 2004 Thanks to all 38 Bidders**

178	E-014-299	Wiedemann KY	6	1.20	211	E-014-745	Renner OH	4	1.65	247	H-003-024	Stegmaier Var A PA	6	4.50
179	E-014-300	Wiedemann KY	6	0.65	212	E-014-747	St Marys Var B PA	6	7.01	248	H-003-025	Stegmaier PA	6	3.12
180	E-014-301	Wieland Var A OR	2	1.15	213	E-014-816	Rochester NY	6	3.12	249	H-003-027	Tech PA	6	3.12
181	E-014-303	Wiessner MD	6	1.20	214	E-014-999	Regent Bever-ages Fit For A King / Same	8	1.65	250	H-003-029	Yuengling PA	4	6.11
182	E-014-305	Wooden Shoe OH	6	6.02	215	E-022-001	Frontenac PA (Min \$15)	6	27.00	251	H-003-030	Bavarian KY	6	4.50
183	E-014-307	Yuengling PA	4	0.65	216	F-009-020	Excelsior OH (Min \$30)	4	40.00	252	H-003-032	Berghoff IN	6	2.15
184	E-014-376	Greenway NY	6	8.00	217	F-018-005	Old Heidelberg IL (Min \$30)	6	40.00	253	H-003-033	Camden NJ	6	7.00
185	E-014-386	Imperial WI	6	13.78	218	G-009-004	Downs NY	6	2.65	254	H-003-036	Dutch Club PA	6	1.02
186	E-014-429	Regal CA	6	1.20	219	G-009-005	Globe MD	4	10.50	255	H-003-037	Gibbons PA	4	2.15
187	E-014-430	Regal CA	4	2.75	220	G-009-008	Murphy MA	6	2.65	256	H-003-038	Wayne PA	6	6.00
188	E-014-435	Royal Bohe-mian MN	6	4.50	221	G-009-012	Ortlieb PA	6	1.80	257	H-003-042	Yuengling PA	2	3.12
189	E-014-442	Southern FL	4	2.75	222	G-009-016	Pickwick MA	6	15.00	258	H-003-049	Miller WI	4	4.50
190	E-014-445	Stegmaier PA	4	4.50	223	G-009-024	Stegmaier PA	6	1.80	259	H-004-001	Prima IL	6	12.08
191	E-014-449	Tube City PA	6	4.50	224	G-009-025	Stegmaier PA	6	1.80	260	H-004-002	Prima IL	4	4.65
192	E-014-451	Utica Club NY	8	3.95	225	G-009-028	Tube City PA	8	6.77	261	H-011-001	Adler Brau WI	6	3.01
193	E-014-453	Wagner OH	6	15.00	226	G-009-038	Schreiber NY	8	4.26	262	I-007-002	Acme CA	8	4.26
194	E-014-455	Walter WI	10	0.65	227	G-009-043	Piels NY	8	6.50	263	I-007-040	Stroudsburg PA	6	24.10
195	E-014-456	Wausau WI	6	2.11	228	G-009-044	Schmidts MN	4	2.15	264	I-007-050	Falls City KY	6	15.22
196	E-014-554	Sprenger PA	4	4.50	229	G-009-068	Lang NY	6	3.12	265	I-009-002	Fox Deluxe IL	6	4.65
197	E-014-538	Regal CA	8	3.95	230	G-009-080	Scheidts PA	4	8.50	266	I-010-002	Red Top OH (Min \$15)	6	21.10
198	E-014-539	Renner OH	8	3.65	231	G-022-001	Fort Pitt PA	6	20.55	267	J-007-002	Coors CO	6	1.15
199	E-014-559	Sterling IN	6	2.11	232	G-023-001	Olympia WA	8	5.26	268	K-001-004	Falstaff MO	8	20.00
200	E-014-562	Tivoli-Union CO	8	8.15	233	G-025-002	Schlitz & Coca-Cola MO	6	20.00	269	K-003-001	Rheingold NY	6	13.65
201	E-014-574	Wehle CT	4	4.50	234	H-003-002	Beverwyck NY	4	0.65	270	K-005-002	Schlitz WI	6	13.65
202	E-014-575	White Crown IN	4	2.90	235	H-003-004	Duquesne PA	6	1.02	271	L-003-004	Michelob MO	6	4.40
203	E-014-576	Ziegler WI	4	3.10	236	H-003-007	Esslinger PA	8	4.26	272	L-004-021	Schlitz WI	6	2.65
204	E-014-645	Tampa FL	8	5.50	237	H-003-008	Fitzgerald NY	6	3.67	273	M-001-019	Haffenreffer MA	4	5.15
205	E-014-646	Tennessee TN	6	7.50	238	H-003-013	Hohenadel PA	6	1.15	274	M-002-003	Goebel MI	2	20.00
206	E-014-648	Tube City PA	8	5.50	239	H-003-014	Hornung PA	6	1.02	275	M-003-005	Edelweiss (Black) IL	6	48.00
207	E-014-651	Vernon CA	6	3.65	240	H-003-015	Iron City PA	8	1.20	276	M-003-005	Edelweiss (Blue) IL	4	12.01
208	E-014-695	Regal CA	6	4.50	241	H-003-016	Iroquois NY	6	4.50	277	M-003-011	Cumberland MD	6	10.01
209	E-014-696	Royal Bohe-mian MN	6	3.45	242	H-003-017	Koehler PA	6	1.02	278	M-003-012	German Red MD	6	11.01
210	E-014-701	Stegmaier PA	6	0.65	243	H-003-019	Ortlieb PA	6	1.15					
					244	H-003-020	Rolling Rock PA	6	5.50					
					245	H-003-022	Schlitz WI	8	1.20					
					246	H-003-023	Simon NY	8	1.20					

**Results of January 2004 JFO Auction Closing February 25, 2004 Thanks to all 38 Bidders**

279	M-003-013	Philadelphia PA	4	9.51	301	M-064-003	Stag IL	6	20.00	333	O-016-002	Stegmaier PA	8	20.00
280	M-003-013	Philadelphia PA	6	10.01	302	M-068-001	Pfaff MA (Min \$50)	6	65.55	334	P-003-001	Pabst WI (Min \$50)	6	63.77
281	M-003-014	Piels (Green) NY	6	11.01	303	N-002-001	Dixie LA	8	4.00	335	P-008-049	Gehling NE	6	5.00
282	M-003-014	Piels (Red) NY	8	25.00	304	N-003-001	Schmidt PA	6	1.15	336	P-008-093	Goetz Var B MO	1	1.15
283	M-003-016	Barbey Sun-shine PA	6	12.01	305	N-010-001	Krueger NJ	6	25.55	337	P-008-146	Anheuser-Busch MO	6	14.95
284	M-003-017	Schorr-Kolkschneider MO	6	13.01	306	N-015-001	Budweiser MO (Min \$25)	6	35.11	338	P-008-175	Stulz Bros MO	4	27.56
285	M-003-018	Stegmaier PA	4	10.01	307	N-016-001	Valley Forge PA	6	10.55	339	P-009-016	Heim MO	2	30.00
286	M-003-029	Victor (TM) PA	6	25.00	308	N-018-001	Chief Oshkosh WI	6	1.65	340	P-010-016	Lemp MO	6	25.00
287	M-006-011	Signal TN (Min \$30)	8	61.23	309	N-018-002	Budweiser MO	8	10.11	341	P-010-025	Goetz MO	8	30.00
288	M-007-001	Duquesne PA (Min \$15)	6	17.77	310	N-018-007	Busch Bavarian MO	6	10.11	342	P-010-035	Heim MO	6	47.56
289	M-017-001	Budweiser MO	6	2.15	311	N-018-012	Falstaff MO	8	20.00	343	P-010-067	Griesedieck Bros MO	6	9.10
290	M-019-019	Burger OH	8	2.65	312	N-020-001	Birk Bros IL (Min \$25)	8	31.77	344	P-014-013	Griesedieck Bros MO	6	22.52
291	M-021-001	Rainier CA	6	15.00	313	N-023-001	Schlitz WI	8	8.65	345	P-019-002	Townsend MT	8	1.00
292	M-023-002	Stag MO	8	6.26	314	N-023-002	Budweiser MO	8	18.11	346	P-020-001	Blatz WI	6	1.00
293	M-030-UL	(EAGLE IN A) PATTY'S WELCOME INN EDDYVILLE, IOWA PH. 969-4441 CATFISH — STEAKS — SANDWICHES OPEN 7 DAYS A WEEK (Handle is Excellent)	4	20.00	315	N-023-005	Anhueser Busch MO	8	14.11	347	P-024-002	Anhueser Busch MO	1	1.15
294	M-036-003	Schreiber NY	6	4.00	316	N-024-006	Milwaukee WI	4	30.00	348	P-041-001	Olympia WA	4	40.00
295	M-031-001	Sterling IN	6	13.65	317	N-026-001	Richbrau MO	6	3.15	349	P-048-003	Stulz Bros MO (Corkscrew Bent) (Min \$50)	4	61.77
296	M-054-001	Strohs MI	8	3.26	318	N-027-UL	COMPLIMENTS OF M. M. DAHLHEIMER YOUR GLUEK DISTRIBUTOR MN	6	20.00	350	P-055-004	Stulz Bros MO	1	12.56
297	M-055-001	International NY (Min \$15)	6	17.77	319	N-029-008	Falls City MO	8	23.77	351	P-057-011	Anheuser-Busch MO	1	1.15
298	M-056-001	Pfaff MA (Min \$30)	4	31.00	320	N-037-002	Strohs MI	8	8.01	352	R-001-002	International NY	6	1.65
299	M-060-004	Stag MO	6	20.00	321	N-046-001	Hamms MN (Min \$30)	8	37.77	353	R-002-004	Iroquois NY	6	12.77
300	M-064-001	Stag MO	6	23.55	322	N-048-001	Scheidt PA (Min \$40)	6	72.00	354	R-007-001	Hauenstein MN	1 0	20.00
					323	N-056-001	Miller WI	1 0	9.01	355	Z-001-001	Crema (Red) (MIB) (Min \$25)	1 0	27.77
					324	N-088-001	Dixie LA	6	20.00	356	Z-999-ZZZ	Amount You Want To Bid for Lots Receiving No Bids (Amount Between 0.01 and 1.00) (Excludes Minimum Lots)		0.65
					325	O-001-004	Miller WI	6	36.77					
					326	O-002-002	Alpen Brau MO	6	3.00					
					327	O-003-001	Valley Forge PA	8	4.15					
					328	O-004-009	Stag MO	6	3.00					
					329	O-004-016	Griesedieck Bros MO	6	3.00					
					330	O-004-030	Goetz MO	6	3.00					
					331	O-006-002	Burgermeister CA	6	6.00					
					332	O-009-001	Stegmaier PA	6	9.77					

**New Auction Rule Above**

**JFO Auction Closing May 19, 2004: Name & #:**

1	A-001-050	Old Style MT	4		32	B-021-043	Jones (A) NH	6		68	B-021-385	Reading (A) PA	4	
2	A-015-019	Fremont NE (Var B)	8		33	B-021-044	Kalamazoo MI	4		69	B-021-388	Seitz PA	4	
3	A-020-014	Stanton NY	6		34	B-021-046	King MA	4		70	B-021-401	Lincoln Malt	6	
4	A-020-018	Elfenbrau WI	4		35	B-021-049	Maltosia NY	2		71	B-021-457	Manhattan NY	8	
5	A-020-019	Goetz WA (3)	6		36	B-021-052	Moerleins OH	6		72	B-021-462	Akron OH	4	
6	A-020-021	Hoffbrau PA	4		37	B-021-057	Narragansett RI	6		73	B-021-468	Hennepin MN	6	
7	A-020-023	Koch PA	9		38	B-021-062	Standard	4		74	B-021-483	Franklin OH	6	
8	A-020-024	Belmont OH	8		39	B-021-065	Pfaff MA	6		75	B-021-503	Bay City MI	6	
9	A-020-027	Sebewaing MI	4		40	B-021-072	Ruhstaller CA	4		76	B-021-536	Crown OH	2	
10	A-020-034	Peerless WI	4		41	B-021-076	Schlitz WI	4		77	B-063-005	Clinton IA	4	
11	A-020-039	Wayne MI	6		42	B-021-086	Tivoli MI	4		78	B-065-002	Silver Foam MI	6	
12	A-020-044	Seitz PA	4		43	B-021-106	Glennon (A) PA	4		79	C-013-027	Ebling NY	8	
13	A-021-054	Rahr WI	6		44	B-021-113	Jung WI	2		80	C-013-029	Eldridge NH	6	
14	A-026-001	Empire NY (Min \$50)	4		45	B-021-116	Klausmann MO	2		81	C-013-030	F & S PA	6	
15	A-035-047	Cheorkee MO	8		46	B-021-117	Kostenbader PA	2		82	C-013-031	F & S PA	6	
16	A-044-001	Cream City WI	6		47	B-021-121	Oakland CA	6		83	C-013-032	Falls City KY	4	
17	A-050-999	Eddie's Café Fried Chicken Southern Style Edwardsville IL	4		48	B-021-123	Oshkosh WI	4		84	C-013-033	Falls City KY	6	
18	A-070-001	Cooks IN	6		49	B-021-133	Renner & Weber OH	6		85	C-013-034	Fecker IN	4	
19	B-016-002	Haberle NY	6		50	B-021-139	Terre Haute IN	2		86	C-013-035	Fehrs KY	2	
20	B-021-009	Cold Spring PA	6		51	B-021-150	Consumers PA	6		87	C-013-036	Feigenspan NJ	6	
21	B-021-010	Coors CO	4		52	B-021-151	Consumers	4		88	C-013-037	Fitzgerald NY	4	
22	B-021-015	Evans Ale NY	4		53	B-021-156	Elfenbrau WI	6		89	C-013-038	Fitzgerald NY	4	
23	B-021-016	Evansville IN	4		54	B-021-161	Gambrinus Stock OH	6		90	C-013-041	Fort Pitt PA	6	
24	B-021-017	Flocks PA	4		55	B-021-183	Mutual Union PA	4		91	C-013-045	Franklin OH	6	
25	B-021-021	Goebel MI	1		56	B-021-185	National MI	6		92	C-013-047	Genesee NY	4	
26	B-021-022	Gold Bond OH	6		57	B-021-186	Northern WI	2		93	C-013-048	German MD	4	
27	B-021-030	Horlacher PA	4		58	B-021-192	Petersen MI	6		94	C-013-051	Globe MD	6	
28	B-021-034	Hyde Park (B) MO	4		59	B-021-233	Cream City WI	4		95	C-013-052	Golden Glow (B) CA	6	
29	B-021-037	Pittsburgh PA	6		60	B-021-236	Crescent IA	6		96	C-013-054	Graupner PA	6	
30	B-021-039	Pittsburgh PA	4		61	B-021-239	Dubuque IA	2		97	C-013-055	Gunther MD	6	
31	B-021-041	Indianapolis IN	4		62	B-021-249	Gluek MN	4		98	C-013-056	Hamms MN	4	
					63	B-021-250	Hack & Simon IN	4		99	C-013-060	Iron City PA	4	
					64	B-021-268	Krantz OH	4		100	C-013-061	Jones NH	9	
					65	B-021-304	Schreier WI	6		101	C-013-063	Kings NY	6	
					66	B-021-307	Simon NY	4		102	C-013-065	Koerber OH	4	
					67	B-021-377	Hack & Simon IN	4		103	C-013-066	Krueger NJ	4	
										104	C-013-071	Miller WI	8	
										105	C-013-073	Muessel IN	4	

**JFO Auction Closing May 19, 2004: Name & #:**

106	C-013-074	National MD	6		141	E-014-170	Krueger NJ	6		176	E-014-232	Red Top OH	6	
107	C-013-076	North American NY	4		142	E-014-174	Leinenkugel WI	6		177	E-014-233	Red Top OH	8	
108	C-013-079	Ortlieb PA	4		143	E-014-176	Lone Star TX	6		178	E-014-388	Karlsbrau (A) MN	8	
109	C-013-080	Pabst WI	6		144	E-014-177	Lucky Lager CA	8		179	E-014-391	Kiewel MN	6	
110	C-013-081	Pabst WI	4		145	E-014-179	Maier CA	8		180	E-014-393	Krantz OH	4	
111	C-013-084	Pelissiers CAN	4		146	E-014-181	Mankato MN	6		181	E-014-394	Krueger NJ	6	
112	C-013-087	Piels NY	6		147	E-014-182	Mankato MN	6		182	E-014-402	Mankato MN	8	
113	C-013-132	Gem WI	9		148	E-014-183	Marathon WI	9		183	E-014-404	Marathon City WI	8	
114	C-013-134	Goebel MI	4		149	E-014-184	Metz (B) NE	6		184	E-014-410	Mitchell TX	6	
115	C-013-135	Goenner PA	6		150	E-014-185	Metz (Copper) NE	8		185	E-014-418	Oshkosh (Copper) WI	8	
116	C-013-137	Heileman WI	4		151	E-014-186	Metz NE	6		186	E-014-419	Pearl TX	2	
117	C-013-140	Iron City PA	6		152	E-014-187	Miller WI	6		187	E-014-427	Progress OK	4	
118	C-013-141	Kessler MT	6		153	E-014-188	Miller (Copper) WI	8		188	E-014-428	Red Top (A) OH	6	
119	C-013-145	Old Imperial WI	4		154	E-014-188	Miller WI	6		189	E-014-428	Red Top (D) OH	6	
120	C-013-173	Falls City KY	4		155	E-014-189	Minneapolis MN	4		190	E-014-515	Kamms IN	6	
121	C-013-174	Gettelman WI	4		156	E-014-193	Muehlebach MO	6		191	E-014-516	Koerber OH	4	
122	C-013-175	Geyer MI	9		157	E-014-194	Narragansett RI	6		192	E-014-519	Lucky Lager CA	6	
123	C-013-225	North Pole WV	4		158	E-014-195	National MD	6		193	E-014-522	Missoula MT	6	
124	C-013-236	Kiewel MN	8		159	E-014-196	National MD	6		194	E-014-529	Ortlieb (A) PA	6	
125	C-013-240	Pioneer WI	6		160	E-014-197	National (Copper) WI	9		195	E-014-530	Oshkosh WI	8	
126	C-013-263	Leideger WI	8		161	E-014-201	Old Dutch PA	4		196	E-014-534	Primo HA	8	
127	C-013-266	Hollenbru RI	4		162	E-014-205	Old Imperial WI	6		197	E-014-536	Rainer CA	6	
128	C-013-272	Mausner IN	4		163	E-014-206	Old Reading PA	4		198	E-014-622	Metz NE	8	
129	C-013-281	P O C OH	6		164	E-014-208	Olympia WA	8		199	E-014-705	Oertel KY	9	
130	C-013-300	Phoenix MI	8		165	E-014-214	Peerless WI	6		200	E-014-713	Pilsener OH	6	
131	C-020-023	Burkhardt OH	4		166	E-014-215	Peoples WI	6		201	E-014-725	Kuebler PA	6	
132	E-004-174	Indianapolis IN	6		167	E-014-216	Peoples WI	8		202	E-014-726	Pickwick MA	6	
133	E-004-192	Robin-Hood NE	2		168	E-014-218	Philadelphia PA	4		203	E-014-737	Queen City MD	6	
134	E-014-065	Eastern NJ	6		169	E-014-219	Phoenix NY	4		204	E-014-807	Pfeiffer MN	8	
135	E-014-092	Fort Pitt PA	4		170	E-014-220	Pickwick MA	8		205	E-014-808	Pickwick MA	6	
136	E-014-160	Kaier PA	6		171	E-014-225	Potosi WI	6		206	E-014-838	Drewrys CAN	6	
137	E-014-163	Kessler MT	6		172	E-014-227	R & H NY	6		207	E-014-999	Thirsty Or Not Grapette / Same	6	
138	E-014-166	Kingsbury WI	4		173	E-014-228	Rainier (B) CA	8		208	F-002-002	Blatz WI	6	
139	E-014-167	Koch NY	9		174	E-014-230	Rams Head PA	6		209	F-007-001	Columbia PA	2	
140	E-014-168	Krueger NJ	8		175	E-014-231	Red Ribbon WI	6		210	F-007-003	Bub Blue MN	8	
141	E-014-170	Krueger NJ	6							211	F-007-011	Falstaff MO	6	



**JFO Auction Closing May 19, 2004: Name & #:**

308	N-011-003	Falstaff MO	6
309	N-013-001	Ballantine NJ	6
310	N-017-001	National MD	8
311	N-025-003	Carling MI	6
312	N-038-005	High Life MO	6
313	N-065-001	Budweiser MO	9
314	N-065-003	Michelob MO	9
315	N-101-001	Storz NE (Min \$60)	8
316	O-003-001	Valley Forge MO	9
317	O-005-009	Falstaff MO	6
318	O-005-018	Falstaff MO	9
319	O-005-030	Bud MO	8
320	O-005-031	Falstaff MO	9
321	O-005-033	Budweiser (A) MO	8
322	O-005-033	Budweiser (B) MO	8
323	O-005-035	Budweiser MO	8
324	O-006-999	Drink All-American Beverages	8
325	O-021-001	Miller WI	9
326	P-001-002	Anheuser-Busch (A) MO	6
327	P-001-009	Lemp MO (Min \$50)	4
328	P-008-004	Anthony & Kuhn MO	1
329	P-008-054	ller MO	4
330	P-008-073	Lemp MO	8
331	P-008-179	American MO	6
332	P-008-187	Obert MO	2
333	P-014-002	Griesedieck Bros MO	6
334	P-020-001	Blatz WI	6
335	P-033-006	Sioux City IA	2
336	P-036-002	Metz NE	6

337	P-042-001	Bartholomay NY	6
338	P-043-004	Excelsior MO	2
339	P-051-019	Rochester MO	6
340	P-051-027	Lemp MO	6
341	P-082-001	Anheuser-Busch MO	6
342	S-003-001	Coors 1987 CO	8
343	S-003-001	Coors 1988 CO	8
344	T-002-001	Anheuser-Busch MO	8
345	Z-999-ZZZ	Amount You Want To Bid for Lots Receiving No Bids (Amount Between 0.01 and 1.00) (Excludes Minimum Lots)	

**New Auction Rule Above (Also Please Note: Grade 10 has been replaced 9 for Mint Condition)**

**NOTE: Do Not and Never Respond to an Email with the following content. These folks are just trying to steal your eBay password and/or your credit card information. Bottom line, it is a scam email.**

**We recently noticed one or more attempts to log in to your eBay account from a foreign IP address and we have reasons to believe that your account was hijacked by a third party without your authorization.**

**If you recently accessed your account while traveling, the unusual log in attempts may have been initiated by you.**

**However, if you are the rightful holder of the account, click on the link below, fill the form and then submit as we try to verify your identity.**

<http://cgi3.ebay.com//aw-cgi/eBayISAPI.dll?VerifyIdentity&ssPageName=>

**The log in attempt was made from:  
IP address: 205.188.209.166  
ISP host: cache-dq04.proxy.aol.com**

**If you choose to ignore our request, you leave us no choice but to temporary suspend your account.**

**We ask that you allow at least 72 hours for the case to be investigated and we strongly recommend not to make any changes to your account in that time.**

**If you received this notice and you are not the authorized account holder, please be aware that it is in violation of eBay policy to represent oneself as another eBay user. Such action may also be in violation of local, national, and/or international law. eBay is committed to assist law enforcement with any inquiries related to attempts to misappropriate personal information with the intent to commit fraud or theft. Information will be provided at the request of law enforcement agencies to ensure that perpetrators are prosecuted to the fullest extent of the law.**

**\*Please do not respond to this e-mail as your reply will not be received. Thanks for your patience as we work together to protect your account.**