

Just For Openers OCT 2005 Issue #108

E-14-749 Terre Haute Brewing Nashville, Tenn.

Certainly one of the more unusual E-14s with an ad for "Champagne Velvet Beer Terre Haute Brewing Co., Terre Haute, In." on one side and on the other side, "Tennessee Beer Co. Nashville—Phone 57326". Just a little reminder to attend the JFO Convention in April in Nashville, Tn.



Copyright 2005

John Stanley
PO Box 64

Chapel Hill NC 27514-0064

(919) 419-1546

Web Site

www.just-for-openers.org

Past Editors:

Don Bull (1979-83)

Ed Kaye (1984-88)

Art Santen (1989-1993)

Annual Dues \$20.00

Renewal Due Date: 12/31/05

Opener & Corkscrew Books
(details in Selling Ads)

2005 Handbook of United
States Beer Advertising
Openers & Corkscrews by
Bull, Kaye & Stanley

"Just For Openers" "A Guide
to Beer, Soda, & Other Open-
ers" by Donald A. Bull & John
R. Stanley

"Soda Advertising Openers"
by Donald A. Bull & John R.
Stanley

"Beer Advertising: Knives,
Letter Openers, Ice Picks,
Cigar Cutters and More" by
Donald A. Bull

"The Ultimate Corkscrew
Book" by Donald A. Bull

"Bull's Pocket Guide to Cork-
screws" by Donald A. Bull

"Boxes Full of Corkscrews"
by Donald A. Bull

"ANRI Woodcarvings: Bottle
Stoppers, Corkscrews, Nut-
crackers, Toothpick Holders,
Smoking Accessories and
More" by Philly Rains and
Donald A. Bull

Inventory of Canadian Beer
Advertising Openers & Cork-
screws by George Vine

Just For Openers Completes 27 Years

This issue completes JFO's 27th year. Many changes are happening with the most important being a switch from using Kinko's as the printer to now actually producing the newsletter at home. My apology for being late with this issue and if the new HP Duplexing printer works well, the print quality of the newsletter should be better and it will also allow me to print newsletters and handbooks on demand and not have to worry about storing back issues.

Fed-Ex purchased Kinko's last year and I could see many changes coming. They maintained their price quote of 2 1/2 cents per page that I had received for the last few years. In fact the first Fed-Ex manager was very easy to work with and then in the late spring they brought in a young "Suzy Sorority" girl and I made it through the July issue with the same price. In August she informed me that Fed-Ex had a new pricing structure and I would have to re-negotiate my price. Since JFO only spends about \$2,000 to \$2,500 in annual print costs we did not even qualify for their bottom tier level, "Bronze" requiring \$5,000 a year in spending and the price per page at this level was 5 1/2 cents. Rather than have my print costs more than double I have opted to using the HP printer. With postage, envelopes and other miscellaneous expenses JFO yearly newsletter costs have been running about \$4,000 and I have been using the remaining \$1,000 to produce the convention opener. Dues will **not** be increased. If this process goes well in the long run (2 to 3 years) it will be even cheaper than Kinko's was at their 2 1/2 cents per page price.

2006 JFO Convention #28 April 19-23 Nashville TN

The convention registration form will be in the next issue. Many members have told me they are excited about having the JFO Convention in Nashville. It is a nice central location for most of the club members. Nashville offers a large selection of tourist stops, large shopping malls and of course the "Grand Ole Opry". Mid-April in the south is always a beautiful time of year to visit. Make your plans now.

Member's Update

Art Santen is the only JFO member to attend every JFO Convention since 1979, along with being a past JFO Editor and having the largest recognized opener collection in the world. Several members have asked how his wife Dorothy is doing. She was able to attend the ICCA cruise to Alaska the first of August but Art wrote afterwards that doctors found another tumor on her brain along with one she had on her kidney. Doctors also told him that further treatment would be useless. She is in no pain and hospice is helping. Our thoughts and prayers go out to Dorothy, Art and the Santen family. She has been a battler for a long time.

-Inventory of Canadian Beer Advertising Openers & Corkscrews-

George Vine completed the new Canadian beer opener book. Thanks George for a great job. Over 2,000 openers and about 250 styles are listed in the 204 page book. Ordering information is in the "Sale" section of the newsletter. US cost is \$24.

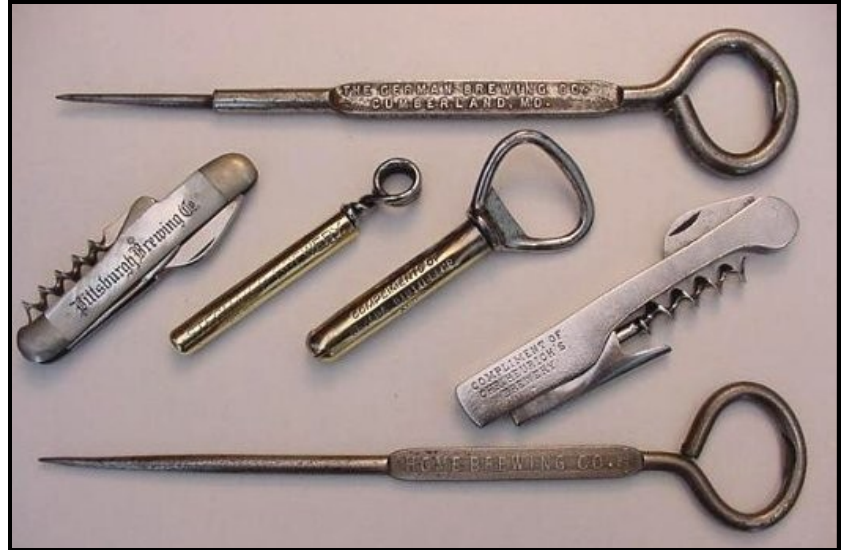
Bull - Stanley Trade July 2005

In Early July 2005 John Stanley was planning to stop by the Bull house on his way North for an ECBA convention. He wrote to Bull with an offering of traders. He was quick to point out "you mentioned the Moxie at one time and I do like it quite a bit." Here's what he offered:



Bull replied to the email with "Yes, the Moxie belongs in my collection. What do you want in trade for it? What would I have to give up for the rest?"

Stanley quickly wrote back "Remember, I am pretty proud of the Moxie piece. I am thinking the bar mount and knife for the Moxie and the others for the other three. Kessler Brewing, Montana Bar Mount, Pittsburgh Corkscrew Knives, Nevada Metal Sleeve, Stegmaier Metal Sleeve, Heurich Corkscrew, German and Home Brewing Opener/Icepicks." This is what Stanley wanted:



Bull replied "I read your list and got chest pains eventually resulting in blowing my stent out my eardrum! But...but...but...now I've composed myself, got the old ticker running again, and gathered up the pieces on your list. There are so many people out there trying to screw the redhead that I guess it's time for him to turn the screw the other way. :-) I am pretty proud of my Kessler (irreplaceable!) and Pittsburgh (a sparkling MOP beauty) - but the Kessler is too big and feeling lost amongst my other barmounts. Oh no - there goes another pain - this time shooting through my brain." Stanley replied "Your comments were priceless. What more can this 'pig' say?" Now that Stanley had owned up to "pig" status, Bull agreed to the trade and was pleased to hear Stanley say "I owe you big time!"

Spouse's Corner

By Pat Stanley, the Editor's Spouse

I might not be sitting down to pen out my contribution to the newsletter if it were not for Norm Jay. The first week of July we had a big inspection at work, one that comes around every three years and lasts three days. We had spent months preparing and were very happy when it ended on a hot Friday afternoon, July 8th. One day we walked all day, all over campus. That Sunday I wasn't feeling too great, my side was hurting. It had bothered me before and I ignored it so it would go away. But this time Norm's scary experience when his intestines ruptured sending bacteria throughout his body was fresh in my mind. So Monday morning we headed to our doctor. John thought he opened early, but of course no one was there shortly after 6:30 a.m. so off to ER. By late morning the verdict was in, my appendix needed to come out. All arrangements were made and shortly after I convinced John to go eat supper, they carried me off to OR. Fortunately they had not ruptured, but were very close to that event.

John suffered more than I for he had to cancel his trip to ECBA. Now if it had been the JFO Convention, I would have been calling friends to take care of me as I would certainly understand that John needs to be at every JFO.

I returned to work the next Monday. If my appendix had ruptured that would not have been the case. When I went for my follow up visit, I took the pictures the doctor had given John and asked her to explain what I was looking at. She pointed at the appendix and said, "BAD!". So glad I was cautious thanks to Norm.

Also, if my appendix had ruptured I probably could not have driven to Florida 2.5 weeks later for my father's funeral. He went into the hospital the day after I was released and passed away very quickly. I told John that he didn't need to go with me. Those who saw him at NABA know why. John really gave himself a double treatment of a lotion used to bring sun spots up to the surface and heal them. The treatment worked just as the brochure from the dermatologist said it would. He was miserable to say the least and looked scary enough for a Halloween party. Going down to the heat of Florida would have only made it worse and I welcomed some quiet car time after all that had been going on. It was also a personal challenge to see if I could still make that trip and I did...630 miles by myself in one day. I had 45 miles to go but couldn't get a room at my destination so I stopped that far out.

So when your "antique" body gives you some warning signs, observe them! I'm doing fine now and will be off to swim some laps before I finish this article. I have to slip into Chapel Hill to the health club and back home while a football game is in progress or I will be tied up in a traffic jam. Go Heels!! (Later...they won!!)

In the July issue I said that I would delay the review of the 2001 issues to talk about the JFO Convention in Omaha. Well, I already reviewed 2001 in April, so now I'm up to 2002. Suggestions as to what I will do after I review the next few years are welcomed. Members seem to like the Spouse's Corner, so I need something fun to do that doesn't take too much time.

Corkie and I spent time outside as I read over the 2002 issues. It's a beautiful day. John is off to the Cameron Flea Market. When he last checked in, it had been worth the drive.

Ollie Hibbeler sent in his summary of the 2001 Midwest-Breweriana Convention for the January 2002 JFO issue. He ended it with "GOOD FRIENDS - GOOD TIME STAY BUSY - STAY HAPPY". John and I should be bubbly happy!!

In January 2002 John was switching to a new software for the newsletter. The air in our house was often Carolina Blue. Corkie and I kept our distance until he mastered it. Corkie and I have been keeping a low profile once again as John got a new printer so he could print the newsletter as the local company went way up on what they were going to charge him for the newsletter. It's a long story and I'm sure he will be telling about it in this issue, but hopefully the printer is now all set up and ready to meet the challenge of 10,000 pages.

Spouse's Corner (continued)

In the January issue we heard about Pat Stambaugh's Nice Christmas, sweetened by some great trades that added a lot to his collection. I think Santa should treat him well again this year as the last we heard he was heading to New Orleans or wherever needed for two weeks to help in the Hurricane Katrina relief effort. We are proud of you Pat!!

Ollie's article on the Indianapolis Advertising Show was included in the April 2002 issue. Shirley had to work and he didn't want to be "Home Alone", so off he went. Ollie saw several JFO members, but missed seeing Larry Moter. The reason for missing this Virginia boy, is that Larry hit the jack pot and was on "Cloud Nine".

In Spouse's Corner that issue, I was reflecting on the 1988 JFO Convention...the one where my hand made basket that was all decked out for a picnic with openers tied on the sides with little red ribbons did not win anything in the display contest. I'm sure I would have won if John had given me something besides common openers to use. Heck...I was sure I was going to win period. In my article I said, "obviously his openers were not my openers". Funny because he has a marque that scrolls across his computer now telling me to remember that "half the collection is yours"...his response to my concern about all the money spent on openers...or should I say plastic spent...sometimes on plastic openers. I plan to sell my half...send requests to me!!

According to Opener Trivia, Mike Krejci purchased a new slider with advertising for Schlitz for \$382.79. See Mike's article, "From the Road" where he talks about wishing he had \$250,000 for openers...looks like he might have that kind of money.

John and I go to the same chiropractor. I think he plays a little game. He asks John what he got at shows and how much the pieces go for, then he quizzes me to see if I have a clue as to what John really purchased. On John's next visit they compare notes to see if I'm still in the dark.

In the July issue, Ollie's quote was repeated, "getting old is hell". Well, not if you are a rare opener.

Go to this issue if you want to read about the Marvin Short Auction that Don Bull and John checked out in Virginia. I know what John spent there, at least how much he admitted to in the article.

Spouse's Corner mentioned the friendship quilt Jackie Young made for the 57th Anniversary of Peg and Bob Nugent. It was signed by friends in JFO, CCCC & ICCA. Peg and Bob have both passed away, but the memories of them and how much they meant to so many people was captured in that quilt.

The July issue had lots of pictures of JFO Fredericksburg, Virginia...the show where Corkie and I had to drive separately as John had his Expedition packed to the top with only room for John Burruss (JEB) who flew into Raleigh to attend this show.

By reviewing Opener Trivia, I discovered that John could have bought an opener from Dave Lendy for \$280, but passed on it. Later he sold it for Dave on eBay where it sold for \$685.99. That is more than trivial.

Time out for a swim.

I'm back. I just got back into swimming a few weeks ago. I forgot that I had already moved up from ¼ mile to 1/3...easing into it as my side bothered me at first. Today I decided to add some more laps, thinking 1/3...but after I left I realized that I went enough laps for ½ mile. Came home starving!

Here I am hungry and the July issue has an article on the Ice Cream Knife from Greencastle, Indiana. Oh well, I just settled for an apple and some raisins.

Spouse's Corner (continued)

On August 31, 1940, the W. J. Lemp Brewing Company declared bankruptcy, alleging it was "...unable to pay debts as they matured, and possessed virtually no working capital". Sounds like a collector I know who doesn't have much cash, but says he has "product". Product is something you sell, not display in your collection.

It's October 1st today, so now onto the October 2002 issue. As far as John knew all the members were doing well. That was a first for 2002 as many of our dear members had been facing major illnesses and Don Whelan had passed away.

In this issue Ollie said they returned from the 21st ABA Meeting in Reno "out of money, out of clothes and out of energy". But they had a great trip and not one bad experience.

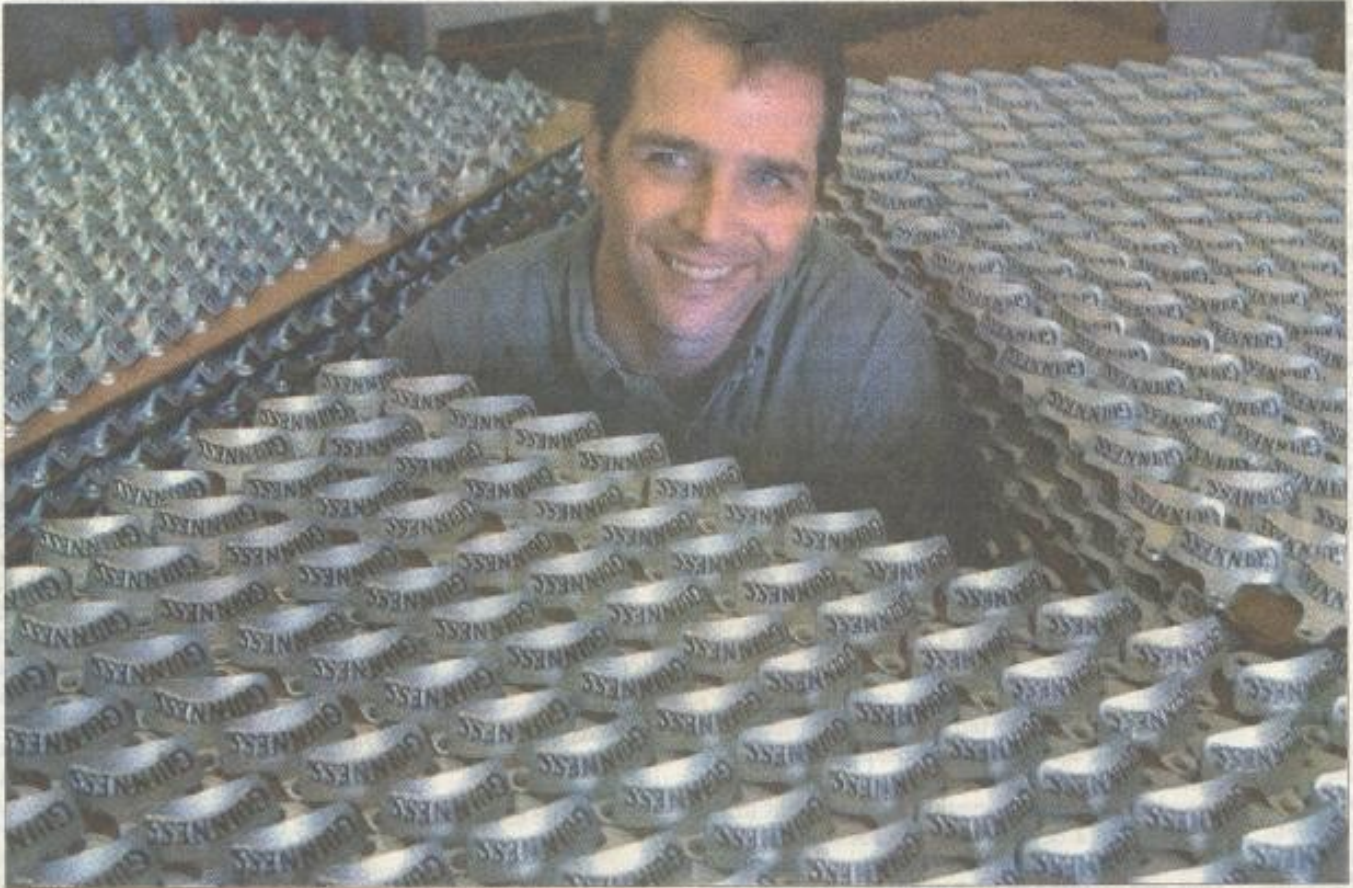
In the October Spouse's corner I mention the sketches Jack Ford sent John, a nice warm touch to John's Opener Room. We will be seeing Jack this month as we will soon take off to San Francisco on our 18th Anniversary. Look out Cable Cars Here We Come!!

John recently purchased still yet another camera, so we won't be visiting Vinny on Fisherman's Wharf to see what used or hot cameras he's passing off on tourists.

As I bring this chapter to a close, remember the quote from Mike Cargile when asked what his favorite in his vast collection was, "It's the one I haven't found". Happy Hunting!!

October New Members, Renewals, Address Changes & Corrections Just For Openers Current Members: 255 (New Member Numbers 1077-1077)

#	Last Name	First	Spouse	Street	City	St	Zip	Phone	E-Mail	Opener Specialties
1033	Ackerly	Tom	Bunny	445 Carson Rd	Crossville (Address)	TN	38571-0615	931-456-0391	tacks@frontiernet.net	US Beer, Soda, Cast Iron
1008	Ackerman	Scott		137 E 5th St	Rifle (Address Change)	CO	81650-2325	970-625-1096 C361-876-5408	ackme-breweriana@yahoo.com	General, US Beer, Can Openers, Corkscrews (Any Breweriana)
841	Bestard	Richard		208 Barranca Ave #43	Glendora (Address Change)	CA	91741-3202	626-914-4664		General, US Beer, Soda, Corkscrew; esp Rochester
1077	Marquis	Andrew		1815 Indian Springs Dr	Jacksonville	FL	32246-7263	904-221-5236		US Beer, Corkscrews. Types (One-Of-Each)
126	Osborn	Jim	Mary Jo	311 Woodlake Dr	Carterville (Address Change)	IL	62918-1400	618-985-6935 W618-942-2171 x35490 F618-351-4926	jro320@yahoo.com	US Beer Openers & Corkscrews; Pre-Pro esp Figural, Brass & Litho
1020	Solari	Chris		PO Box 2	Sweptownville (Address)	NC	27359-0002			Can Openers
227	Wagner	Paul	Stella	Villa At Morlaton 1180 Ben Franklin Hwy	Douglasville (Address Change)	PA	19518-1803			Types



Photos by RICH ADDICKS / Staff

David Brim is president of Brown Manufacturing in Decatur, which makes metal bottle openers, the kind that were once found in almost every store and home but have largely disappeared with the rise of plastic containers.

Wide-open Business

Nostalgia-soaked bottle cap removers enjoy tiny niche.

By Scott Leith sleith@ajc.com

The building that houses Brown Manufacturing Co. is part assembly line, part museum.

Brown's products, not surprisingly, are part of the history.

This tiny Decatur business makes metal bottle openers, following an 80-year-old design. David Brim runs Brown – two employees, including himself – in a space of just 3,500



Starr openers have the field mostly to themselves, with the only competition coming from Asia.

square feet, including inventory, machinery and a vast display of old bottle openers.

As a business, it's minuscule. But consider the company's character.

Brown's Starr-brand wall-mounted bottle openers have been around since 1925. They continue to sell to buyers wistful for the old days and, of course, people who actually need to crack the cap off a glass bottle. Restoration Hardware, tony retailer of all things retro, liked Starr openers enough to start carrying them last year.

Openers: Decatur business thrives (Continued)

“It’s nostalgic,” Brim said. “It reminds you of something from your childhood.”

Odd as it is, Brown is new to Decatur – the company moved there in September 2004. How it got to this corner of metro Atlanta is a tale that starts in another part of the South.

Brown (Mfg.) was born in Newport News, Va. in 1925 when a Coca-Cola bottler, Raymond Brown Sr., started making the Starr openers in the basement of his bottling plant.

Back in those days, soft drinks came in glass bottles. Cans didn’t become big time sellers until the mid-1960s, and the popularity of plastic bottles wouldn’t take off until the late 70’s. With steady demand, Brown churned out openers.

In 1984, a tragedy hit the Brown family, as then-owner Raymond Brown Jr. died in a plane crash. Five years later, when his widow decided to sell, a next-door neighbor was ready to buy.

The owner, Brim said, operated the company on an absentee basis. “He got tired of it after about eight years and went around to some of his biggest customers to see if they were interested,” Brim said.

The chance to buy Brown caught the attention of David’s mother, Barbara Brim.

Barbara owns Trademark Marketing International in Alpharetta. The company sells doodads decorated for companies like Coca-Cola, Deere & Co and Chevrolet. For years, Starr-brand openers were Trademark’s best-selling item.

“When they called and wanted to sell, I didn’t even think twice,” Barbara said.

That was in 1998. Barbara Brim moved to Brown’s operations to Alpharetta. David who’d worked for his mother since 1991 showed an interest in taking over.

“I thought it was much better opportunity than working for my mom, although I love her and everything,” David said.

He encountered a company that wasn’t profitable and even for an antiquated product, was mired in outdated production techniques. He updated the process, cutting labor costs.

After several years of commuting to Alpharetta, Brim – who lives in Decatur’s Oakhurst neighborhood – also got tired of the long drive. Last year, while returning home from a trip to Waffle House with his kids, he saw a “for lease” sign on a complex near Decatur’s Agnes Scott College and signed up for his current space.

Brim is fascinated with the history of Starr openers. He scours eBay, looking for rare ones. He now has more than 100.

John Stanley, editor of a newsletter that goes to 275 members of a club of opener enthusiasts called Just for Openers, said the most expensive Starr he knows of sold on eBay for \$850.

Starr openers are unique, Stanley said because Brown is practically the only company that makes them. “There are knock-offs made in Taiwan and Hong Kong, but they’re pretty cheap,” said Stanley, a computer programmer from Durham, N.C.

“Brim has re-energized collectors by introducing new openers,” said Stanley, who attended the national convention of Just for Openers in Omaha, Neb. this week.

While history is fun, Brim also is trying to improve the fortunes of his company.

His sole employee, Tammy Ballard, handles much of the work of getting openers out the door. Most are cast in Germany then shipped to Decatur for finishing, boxing and shipping.

Brim’s best successes have come via the Internet, where www.bottleopener.com tells the Brown story. “My biggest customer in Europe found me because of my Web site,” Brim said. “Restoration Hardware found me. Cost Plus World Market found me.”

Retro-style openers seem a natural fit for a chain like Restoration Hardware which sells them for \$5.95. But Brim didn’t get the deal right away.

“I contacted them years ago,” he said. “But I never heard back. Then a buyer found an old Barq’s bottle opener in the old packaging and had his assistant do some research and they found me.”

At 39 Brim has a long career ahead of him, so he’s started to buy Brown from his mother.

“To say the least, bottle openers are a mature business, but Brim expects Brown to be around for decades. “I see nostalgia being the driving force in the company,” he said, “Business is very steady.”

Note from JFO Editor: I did substitute the O-5-39 Schlitz picture for a general Starr opener picture that the Atlanta Constitution Journal had used.

THE W. H. HUTCHINSON THEIR CLOSURES AND COMPANY THEIR BOTTLES

photos by Jerry Hostetter
Scottsdale, Arizona

by Ray Hoste
Dundee, Michigan



Early Crown Cap Opener.
Notice eagle heads at top.



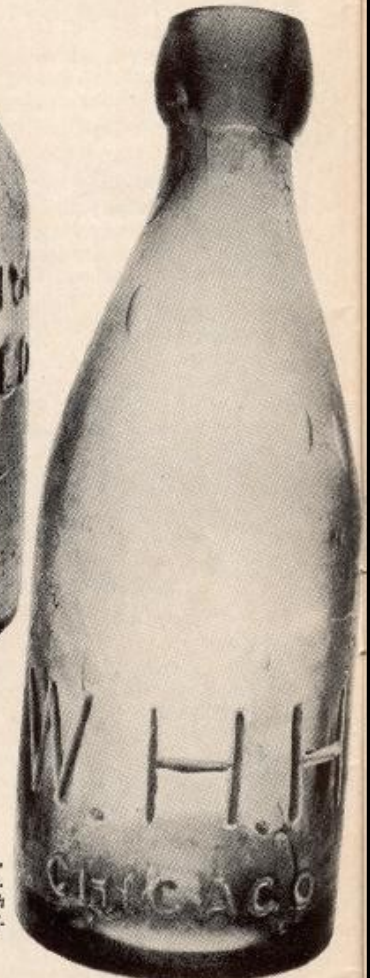
Early 1850s round Pottery
Hutchinson's Lemon Beer.
Brown-tan in color. Have
also seen Spruce Beer in
this type of bottle.



(Right) Rare sample bottle
made to promote patent
stopper. This one made by
A&DHC (Alexander and
David H. Chambers Co.,
Pittsburg, Pa. between 1843
and 1886. One was made
by I.G. Co. (Ihmsem Glass
Co., Pitt., Pa. when they
took over the Christian
Ihmsem bottle House in 1879



(Above) Example of early
pontiled mineral water,
cobalt, circa 1850. This is
one of the earliest Hutch-
inson bottles.



(Right) Cobalt blob-type,
round base circa 1850-60.
Also this bottle comes with
pontil and also with panel-
ed base.

20 September 15, 1921
 THE BOTTLE STOPPER
 NATIONAL BOTTLEERS GAZETTE

HUTCHINSON CROWNS

for Every Bottling Need

W. H. HUTCHINSON & SON, Inc., 1031 N. Cicero Avenue, Chicago, Ill.

HUTCHINSON

CROWNS - FLAVORS - SUPPLIES ESTABLISHED 1850

"The Boss of all Soda Water Stoppers"

"VICTORIOUS HUTCHINSON STOPPER,"

Only \$2.00 Per Gross.
 NOW USED BY OVER 2,300 BOTTLERS IN THE U. S.

The Parkhurst Patent, under which Evered claims the right to make his Stoppers, was declared VOID by the United States Court, November 30th, 1886.

MORE OF "THE HUTCHINSON" ARE USED THAN OF ALL OTHER SODA WATER STOPPERS COMBINED.

ESSENTIAL Oils and Acids New York and Other HARDLE DUST.

WE ARE THE ONLY MANUFACTURERS OFFERING "LEWIN" STOPPER FOR THE UNITED STATES.

Patent No. 216,992, APR. 8, 1879
 RE-ISSUE No. 187,523, JUN. 17, 1899

Hutchinson's BOTTLEERS' SUPPLIES AND EXTRACTS.

W. H. HUTCHINSON & SON,
 OFFICE AND FACTORY,
 16 and 198 South Desplaines Street, Chicago.
 BRANCH STORE AND OFFICE, 60 PARK PLACE, NEW YORK.
 W. C. SMITHERS, Manager.

C. G. HUTCHINSON.
 Bottle-Stopper.
 No. 8,755. Released June 17, 1919.

Attest:
 Chas. Schreff
 Charles Schreff

INVENTOR:
 Charles G. Hutchinson
 By S. S. Harnes, his
 Attorney

headed west to Chicago, and by 1844 he began bottling Spruce and Lemon Beer. The 1849-50 city directory lists the firm as "Hutchinson & Co. Beer Market and Dealers in Cider, Randolph St. between Clinton and Jefferson."

Chicago was sparsely settled in 1848 when William started his firm but with the growth of the city, the demand for mineral water became greater and the business prospered. In 1858, T.O. Dunn was taken into partnership which continued until 1864 when Mr. Dunn sold his interest to William A. and George C. Hutchinson, sons of William H. the founder. The business became known as W.H. Hutchinson & Sons, 243 W. Randolph, as recorded in the Business Directory of Chicago in 1866-67. This co-partnership continued until 1879 when W.H. Hutchinson died, and Wm. A. Hutchinson retired; at this time George C. and his younger brother Charles G. continued the business.

Charles (Doc) patented the now celebrated Hutchinson soda stopper in 1879. The demand for the stopper increased so rapidly that three years later they sold the soda and mineral water business to Hayes Bros. Adding extracts and general supplies to the

Two W. H. Hutchinson ads.

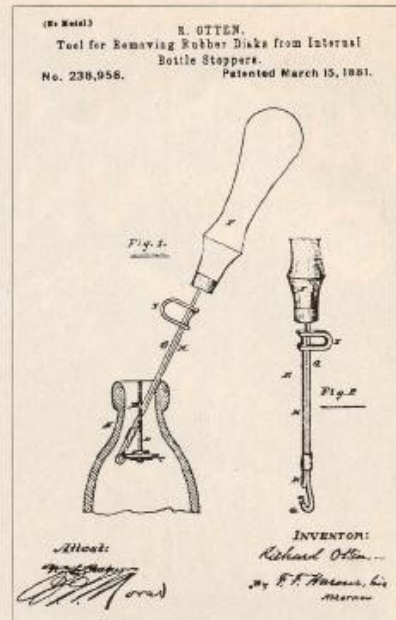
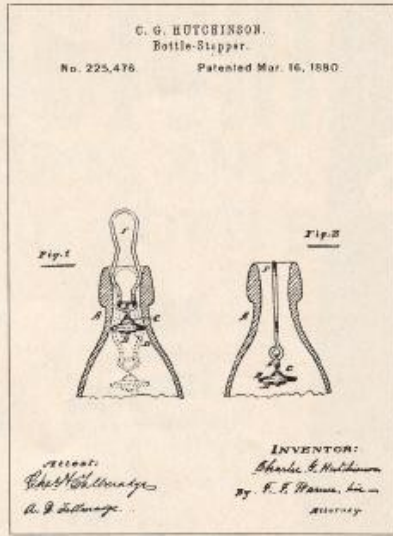
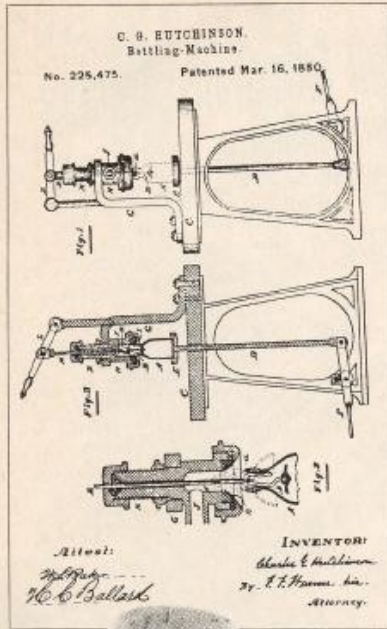
C. G. HUTCHINSON.
 Bottle-Stopper.
 No. 219,729. Patented Sept. 10, 1879.

Attest:
 W. H. King
 W. J. Kelly

INVENTOR:
 Charles G. Hutchinson
 By S. S. Harnes, his
 Attorney

Probably every bottle collector is familiar with the Hutchinson stopper. Not everyone, however, is aware the inventor of the Hutchinson stopper was also a bottler and that there are a number of embossed bottle bearing his name. Here is a condensed version of W.H. Hutchinson Co. history from 1844 to present.

William H. Hutchinson was born in 1812 in Lebanon, Conn., the son of Sarah and Joseph Hutchinson. By the age of 28, William had gone to Williamsburg N.Y. where he owned the Williamsburg Inn. In 1840, William



238,958. TOOL FOR REMOVING RUBBER DISKS FROM INTERNAL BOTTLE-STOPPERS. Richard Otten, Chicago, Ill., assignor of one-half to Charles G. Hutchinson, same place. Filed Aug. 12, 1880. (No model.)



Gray pottery extract jug with cobalt X. 10-sided, circa 1880s.



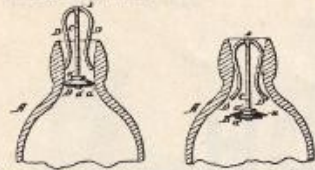
Earliest Hutchinson & Son spring type.

Large extract bottle, aqua, circa 1880s on. A number of these around.



Excellent light cobalt Hutch soda, spring type. 10-paned ed base, circa 1879-1880.

285,488. BOTTLE STOPPER CHARLES G. HUTCHINSON, Chicago, Ill.
Filed Mar. 8, 1881. (No model.)



Claim.—An internal bottle-stopper in which the valve is provided with a central vertical stem extending above it and made in two parts, one consisting of the central wire or stem, C, and the other of a bow-shaped wire attached at the concavity of its bow-shaped part to the upper end of the part C, and forming laterally-yielding depending arms D D, having free or loose lower ends, substantially as shown and described, and for the purposes set forth.

manufacture of the stopper, the constant growth of the business necessitated closing the fountain part of the business in 1887. It was sold to Chicago Fountain Soda Water Co.

The elder son, George, died in 1897 and Charles (Doc) in 1903. At that time, Mrs. George Hutchinson (widow) of the late George became president of the company and employed Douglas W. Hutchinson, youngest son of the founder, who became secretary and treasurer and later general manager. In 1913, Douglas purchased controlling interest and began making crowns. By 1916, the company moved to a newly built plant at 2107 West Walnut St. In 1929, Douglas retired and later died in April of that year.

Business increased and in 1929 the company built a modern plant at 1031 North Cicero Ave. which, with additions, houses the Hutchinson plant today.

In 1929, Noble E. Snyder, son-in-law of D.W. Hutchinson, began his term as president. Noble Snyder carried the company through the depression, into the 1930's great expansion of the beverage industry. Growth of the Company continued but failing health forced Noble Snyder to retire in 1943. He died in 1944.

Joseph S. Kelly became president upon Snyder's retirement in 1944. In 1962, Hutchinson was purchased by the International Silver Company (now the Insilco Corporation). In 1974, Insilco sold the company to the National Can Corporation and now Hutchinson operates as the Closure Division of National Can Corporation.

Editor's Note: As this is being published we learn the W.H. Hutchinson company has just introduced another new closure—the Smoothie Aluminum Can Closure. It is resealable and doesn't cut your finger. It is doubtful this new closure will create the stir among collectors a hundred years hence that the Hutchinson Stopper did—but who knows?

Hutchinson Bottle Article sent in by John Cartwright

Original Article in "Old Bottle Magazine" April 1978

Please note in the July newsletter the G-9 Convention Display belonged to Dick Clark not Bill Arber.

"On The Road" with Mike Krejci #909

A lot of miles have gone by since our JFO convention in Omaha, 32,948 to be exact. I would like to say it was great seeing everyone there. Omaha doesn't stack up to San Francisco, but that isn't our host's fault. Even though it's late, I would like to thank John for hosting a great convention and finding such a wonderful hotel.

This year Art Santen and I decided not to rent bicycles and ride across the Golden Gate Bridge. We just didn't want to spend that much money. The basic rental wasn't bad, but the mileage charge would have been quite high.

I was able to add some nice openers to my collection at the convention. The biggest single transactions added almost 30 of the red head's from North Carolina favorite types – the Q type – Long Live Plastic! As I see it they at least won't rust much and future collectors will not have to spend so much time polishing.

I've been home very little and now as summer is slipping into fall, I'm frantically trying to get my spring projects done before the snow starts flying here in the Midwest.

I don't know who has the money to keep buying these machines I move so much of the time. They are priced at \$250,000 and up. All used for cutting timber. Boy I sure wish I had enough money to buy one. I wouldn't buy one, but just think of the openers I could buy with that kinda dough!

A couple of weeks ago I decided to visit Schell's Brewing in New Ulm, MN. So early one morning – about 8 am – a friend of mine from Anirva and I left for the tour. We decided to stop in Chippewa Falls, WI at the Leinenkugel Brewery. We visited the Leinie Lodge Gift where I added a few new openers to my collection including one new discovery.

Then it was on to Minneapolis where we stopped at the Hard Rock Café for lunch and I purchased an opener for my collection. Then on to New Ulm. This was the most unique stop on our tour. For anyone who has not been there, the brewery grounds are at the end of a road that appears to be only an alley. After making the last right turn the brewery sits on a hillside with a small river at the bottom of the valley. There are a number of historical buildings on the grounds including the gift shop which is located in the former residence of the owner. A quaint building just jammed packed with collectables including a dozen or so openers. I purchased two of almost every one they had, one set for my collection and one set for sale. I had mail ordered a double set before the convention and sold them all at the convention as many of them were new listings. The poor gal in the gift shop got all frazzled as here was some nut asking for any and all openers they had and then on top of that, two of each! I guess they don't make too many sales of \$140 + just in openers. I had only a few minutes before the tour started so I was trying to rush and finally the gal said she would go through what they

“On The Road” (Continued)

had and make sure there were two of each for me. This was just before 4 PM when the tour started which was expected to last until 5 PM or so with a visit to the hospitality room for a taste test as the finale and the gift shop closes at 5 PM. Well, I made it back to the gift shop at 4:55 PM and there were all the openers waiting. She had to go to the stock room for some and still were two she couldn't find.

The tour consisted of a talk by the guide on the history of brewing with a video on the actual brewing process, etc. Then outside to the grounds for a very informative narrative on the history of the buildings and grounds. I believe it was August Schell who enjoyed raising deer and kept some on the grounds whose descendants are still around. That is where the deer on their logo came from. It is interesting to see the ammonia pump for ice making that was installed in the late 1890's and also a state of the art copper brew kettle from the same era. To retain some of the nostalgia of the brewery these two items are preserved in the original buildings. The pump is no longer used, but the brew kettle is used to heat water for use in the brewery. It is interesting to note August Schell Brewing produces about 80,000 BBLS of beer per year, the amount Anheuser-Busch produces in a little under two days. I think Schell's makes a better beer though. I especially liked their Carmel Porter, a nice dark beer. From there it was home arriving there late in the evening at 1:30 AM Tuesday.

At the time I had a message waiting that informed me there was a load for later in the day! So off to work again!!

A few days after the visit to Schell's, I called to order the openers I was missing and when I mentioned having been there and buying some openers, the lady on the other end said, "Oh, we remember you! You had so and so (I don't remember names well) (except for opener names) really going, looking for openers."

Along with the openers I purchased at the convention, the ones from Leinenkugel Brewing and Schell's Brewery, I've added many nice openers to my collection. I wanted to include a review of some eBay purchases but I just don't have time (and Pat is getting tired of typing this too).

As I finish this report it is already Sept. 10th and I'm in Selma, AL. Wednesday, Sept. 7th I loaded 40,000 lbs of ice in Oshkosh, WI and headed to Hattiesburg, MS, part of the Hurricane Katrina relief efforts. I arrived at Camp Shelby in Hattiesburg Thursday at 5:30 PM. At 5:30 AM Friday I was told to go to Selma, AL to Craig Airfield. Arrived here noon Friday to join about 500 other trucks with relief supplies waiting to be dispatched to where things are needed. FEMA pays the bill including time spent sitting, so I'm earning money even when I'm sleeping. (Our Tax Dollars at Work, and Not Available for Openers!)

So that's it for now – From the Road.

Show Update for ECBA, NABA and BCCA.

ECBA was dead in my sights and then Pat had to have an appendectomy operation. Good bye ECBA show (the first one I missed in 11 years). The good news was that I turned over Membership Secretary duties in that club to Tom Byrne. Besides missing the show I had planned visits to see Ben Hoffman

and Harold Queen. It will have to wait until another year. I was told the show was good for general breweriana but did not hear of any good openers being there. Instead of ECBA I had to make due with the one-sided trade with Don Bull (see page 2).

NABA (South Bend IN) was good for openers and I actually added a few to my collection as John Bitterman was selling out many of his Illinois openers (don't worry they were all commons except for the nice L-2-23 Joliet, got a few from Norm Jay, got a few from Verne Vollrath, and started a big trade with Larry Moter. Bad news about this show was the skin doctor had me do a face peel and it was like I had a Halloween mask on scaring everyone. Thankfully after a few weeks it healed up. There were many JFO members in attendance besides the ones already mentioned. As is the case for me usually, the best summer beer show I attend.

BCCA was in Charlotte and it worked out that Pat and Corkie could both attend at a very nice downtown hotel. This was my first BCCA Convention and probably my last as few openers were available and ninety percent of the breweriana there was CANS. That's why they call it a "can show". I actually traded Mark Barren out of a couple of openers and Larry Moter and I completed a big trade we had started at NABA. Larry got seven wires and I got seven miscellaneous openers (even some wires from Larry).

The Stanleys stayed one night at BCCA and headed home Thursday afternoon. This allowed me to go to the annual Hillsville VA Flea Market and even though I was three hours behind Larry Moter, I did find a few openers. The best was a M-3 Statler Hotels. Happy Holidays everyone!

New Discoveries to the 2005 Handbook

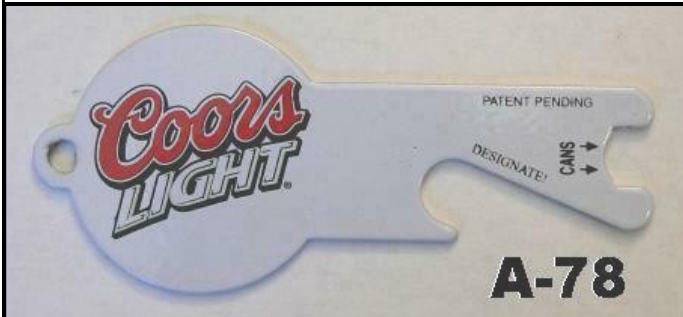
**A-77 WRENCH
CAP LIFTER
6 1/16"
JOHN STANLEY**

1. COORS (CHOPPERS IN LOGO) DRIVE SOBER @ 2004
COORS BREWING COMPANY GOLDEN, COLORADO
80401 - BEER - CCL001578



**A-78 BOTTLE/BASKETBALL
CAP LIFTER
3"**

1. COORS LIGHT PATENT PENDING DESIGNATE CANS



**C-62
CAP LIFTER/KEY RING HOLE
PLASTIC OVER STEEL
4 13/16"
ART JOHNSON**

1. BUD LIGHT BEER
2. BUDWEISER (IN CROWN LOGO)

**C-63
CAP LIFTER/KEY RING HOLE
4 1/4"
JOHN STANLEY**

1. COORS LIGHT / (PIC OF MOUNTAINS)



**C-64
CAP LIFTER/CURVED HANDLE
5 7/8"
JOHN STANLEY**

1. MILLER LITE (IN LOGO) / WWW.ACMEAPPAREL.COM
978-282-4800



**C-65
CAP LIFTER/WITH RETRACTABLE BELT CLIP
5"**

1. COORS LIGHT



**E-33
THREE FRETS/SCREWDRIVER TIP
TOP WRAPPED AROUND HANDLE
MARKED "PAT. APPL'D FOR" ON BACK
4"**

1. STEGMAIER BREWING CO.



G-83
CAP LIFTER/HEAVY PEWTER
3 1/2"

BEN HOFFMAN
 1. BREWERY OMMEGANG / COOPERSTOWN NY



M-152
CAP LIFTER/CAN PIERCER
MARKED 'K J H STERLING 25"
6 5/8"

MIKE KREJCI
 1. BALLANTINE (3 RING LOGO)



M-153
CAP LIFTER/KNIFE COCKTAIL FORK
MARKED "STAINLESS STEEL"
8 3/16"
MIKE KREJCI

1. CARLING



L-19
PLASTIC BOTTLE/
CAP LIFTER/CAN PIERCER
MARKED
"@ BOSTON WAREHOUSE
STAINLESS CHINA"
6 1/2"

MIKE KREJCI
 1. HARBOR ALE (PIC OF TUG-
 BOAT) MICROBREWED PREMIUM
 LAGER BEER (HARBOR ON
 NECK LABEL)

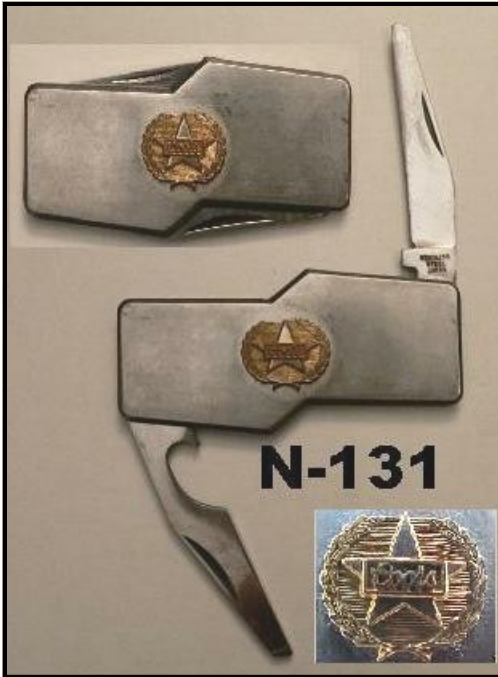


M-154
CAP LIFTER/MUDDLER
(SEE M-19 & M-120)
HEAVY BRASS
5 3/4"

JOHN STANLEY
 1. BRIDGEPORT (PIC OF
 BRIDGE) BREWING
 CO. PORTLAND, OR /
 BRIDGEPORT (PIC OF
 BRIDGE) BREWING
 CO. EST. 1984



N-131
 TWO BLADE KNIFE/CAP LIFTER BLADE/
 MASTER BLADE
 MASTER MARKED "STAINLESS STEEL JAPAN"
 2 1/2"
 MIKE KREJCI
 1. COORS (IN STAR LOGO)



N-133
 CAP LIFTER/MOUNTAIN CLIMBING RING
 3 1/8"
 MIKE KREJCI
 1. COLD.DOWN.EASY (MOUNTAIN SCENE) (COORS SLO-
 GAN)



N-132
 FIVE BLADE KNIFE/CAP LIFTER BLADE/
 CAN OPENER-SCREWDRIVER BLADE/LOCKING MASTER BLADE/
 SCREWDRIVER BLADE/PUNCH BLADE
 PLASTIC TOOTHPICK IN HANDLE
 MASTER MARKED
 "VICTORINOX SWITZERLAND STAINLESS ROSTFREI"
 4 3/8"
 MIKE KREJCI
 1. LITE (IN CIRCLE) (SWISS ARMY KNIFE LOGO)



N-134
 FOUR BLADE KNIFE/CAP LIFTER-SCREWDRIVER BLADE/
 CAN OPENER BLADE/MASTER BALDE/PUNCH BLADE
 MASTER BLADE MARKED "COLONIAL PROVIDENCE"
 3 1/2"
 JOHN CARTWRIGHT/JOHN STANLEY
 1. GOLDEN AGE BEVERAGES (FROM YOUNGSTOWN OH)



JFO Convention #28
 April 19-23 2006
 Holiday Inn Select Airport
 Nashville TN

N-135
 SIX BLADE KNIFE TOOL KIT/
 FIVE NON-MASTER BLADES LOCK INTO KNIFE HANDLE/
 CAP LIFTER-CAN PIERCER BLADE/
 MASTER BLADE/FILE BLADE/PUNCH BLADE/
 SCREWDRIVER BLADE/STRAIGHT BLADE
 MASTER BLADE MARKED "IMPERIAL PROV. USA"
 3 11/16"

- JOHN STANLEY/ROBERT SUDDUTH
 1. (EAGLE IN A) BUDWEISER KING OF BEERS / AM-
 BROS, INC. AGANA, GUAM TEL. 7-2156

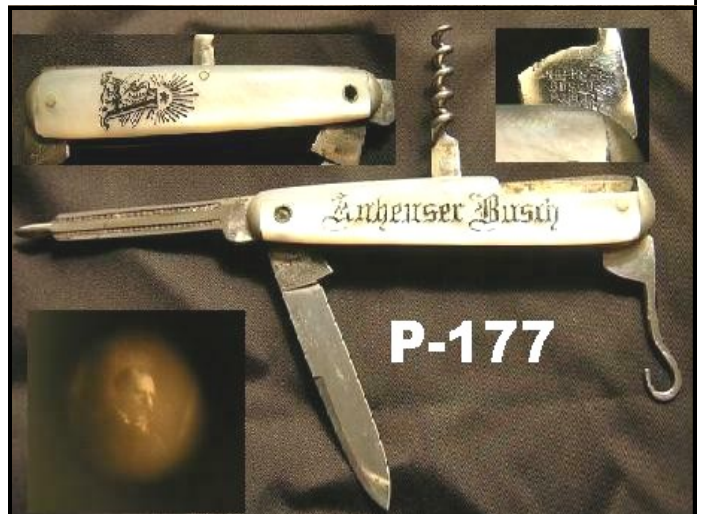


(RIGHT SIDE TOP)
 N-136
 CAP LIFTER
 METAL CAP LIFTER ATTACHED
 TO CARDBOARD SHAPED BOTTLE
 11"

- TIM PAYNE
 1. GOETZ COUNTRY CLUB BEER (ON NECK LABEL)
 "MERRI" BEVERAGE CO. YOUR FAVORITE FLAVOR
 (MERRI MERRI IN CROSS PATTERN)



(RIGHT SIDE BOTTOM)
 P-177
 FOUR BLADE KNIFE/CORKSCREW/
 BUTTON HOOK BLADE/FILE-PUNCH BLADE/MASTER BLADE
 MOTHER OF PEARL HANDLES
 STANHOPE WITH PIC OF BUSCH
 BLADES MARKED "ANHEUSER BUSCH GERMANY"
 DON SWANEY
 1. ANHUESER-BUSCH / (EAGLE IN A)



P-178
 THREE BLADE KNIFE/CORKSCREW/
 MASTER BLADE/PEN BLADE
 METAL HANDLES
 BLADES MARKED "CHRISTIANS SOLINGEN"
 NORM JAY

1. ANHUESER BUSCH



P-178

P-180
 FOUR BLADE KNIFE/CORKSCREW/
 CAP LIFTER WIRE CUTTER BLADE/MASTER BLADE/PEN BLADE
 ORNATE METAL HANDLES
 KNIFE BLADES MARKED
 "DOLPHIN CUTLERY CO. NEW YORK GERMANY"
 JOHN CARTWRIGHT

1. EVERETT BREWING CO. EVERETT, WASHINGTON / EDELREIN AND EVERETT BEER



P-180

P-181
 TWO BLADE KNIFE/CORKSCREW/
 CAP LIFTER IN HANDLE/MASTER BLADE
 CELLULOID HANDLES WITH METAL BOLSTERS
 BLADE UNMARKED
 DON BULL/ED THEBERGE

1. FALSTAFF ST. LOUIS (IN SHIELD) DRINK FALSTAFF BEER JOHN HIRSCHFELD, DIST.
2. THE FAMOUS NARRAGANSETT BANQUET ALE

P-179
 CORKPULLER/PLASTIC CASE INSIDE WOOD CASE
 MARKED "ITALY"
 JOHN CARTWRIGHT

1. BEAR REPUBLIC BREWING CO.



P-179



P-181



Collector of
 Canadian Beer Advertising
 Openers, Corkscrews, Ice Picks, Labels
 CB 561 JFO 1055
 George H. Vine
 219 Murray Ave.
 Greenfield Park, Quebec
 Canada J4V1N5
 phone 450 672 4489 e-mail goovin@vidcotron.ca

P-182
 WOOD HANDLE (4-SIDED) CORKSCREW
 WIRE BREAKER & CAP LIFTER PART OF CAST BELL
 (SEE P-10 & P-117)
 MADE BY WILLIAMSON
 JOHN CARTWRIGHT

1. WINE-LIQUOR-BEER / MANUFACTURED FOR RICHTER BOTTLING CO. / WINE-LIQUOR-BEER / MANUFACTURED FOR RICHTER BOTTLING CO.



P-182

Q-89
 TAB LIFTER
 MADE IN CHINA
 3 1/4"
 BILL MCKIENZIE

1. BUDWEISER



Q-89

Q-90
 CAP LIFTER/TAB LIFTER/BALL-POINT PEN
 MAGNET ON BACK
 5 7/8"
 OLLIE HIBBELER

1. O'FALLON BREWERY



Q-90

P-183
 ELEVEN BLADE KNIFE/CORKSCREW/
 CAP LIFTER-SCREWDRIVER BLADE/
 CAP LIFTER-CAN OPENER BLADE/MASTER BLADE/
 SCISSORS BLADE/SAW BLADE/FISHER SCALER BLADE/
 PHILLIPS SCREWDRIVER BLADE/
 NAIL CLEANING BLADE/PUNCH BLADE/PUNCH BLADE
 MASTER BLADE MARKED "CHINA / STAINLESS"
 MIKE KREJCI

1. STEVENS POINT BREWERY BREWING EXCELLENCE SINCE 1857



P-183

Q-91
 TWIST OFF CAP LIFTER ON BACK
 MADE OF RUBBER
 2 3/8"
 JOHN STANLEY

1. MILLER LITE



Q-91

Q-92
TWIST OFF CAP LIFTER ON BACK
MADE OF RUBBER
COMES ATTACHED TO "BOTTLE KOOZIE"
3 1/4"

- MIKE KREJCI**
 1. MILLER LITE TRUE PILSENER BEER



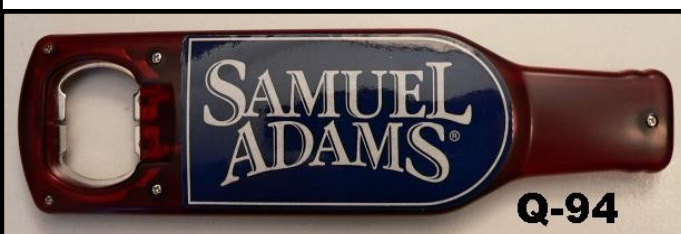
Q-93
CAP LIFTER
6 1/8"

- OLLIE HIBBELER**
 1. BUD LIGHT / BL
 2. BUDWEISER (CROWN LOGO) / KING OF BEERS
 3. BUDWEISER SELECT (CROWN LOGO) BE SELECTIVE



Q-94
CAP LIFTER
BOTTLE SHAPED
WHEN OPENER TOUCHES THE BOTTLE CAP
"SAMUEL ADAMS SALES LINE"
6 3/16"

- MIKE KREJCI**
 1. SAMUEL ADAMS / SAME



R-52
RACING HELMET
TWIST-OFF
CAP REMOVER
MARKED
"MADE IN CHINA"
2 1/8"

- ART SANTEN**
 1. BUD
 KING OF
 BEERS /
 8 / BUD
 KING OF
 BEERS /
 DALE JR
 TM



R-53
LIZARD
CAP LIFTER
MARKED "CHINA / 0452-123"
2 1/2"

- JOHN STANLEY**
 1. KONA BREWING CO (IN LOGO) KONA HAWAII (WHITE
 ON BLACK) (WHITE ON GREEN) (WHITE ON PURPLE)



Mike Krejci's "Opener Card" below:
It is "extrodinar" when hit by an 18 Wheeler!

MEMBER
 NABA
 ABA

COLLECTOR OF BEER ADV
 OPENERS-ESPECIALLY OLDER
 WISCONSIN BREWERY OPENERS

MICHAEL KREJCI
 opener collector extrodinar
 member JUST-For-OPENERS
 since 1999

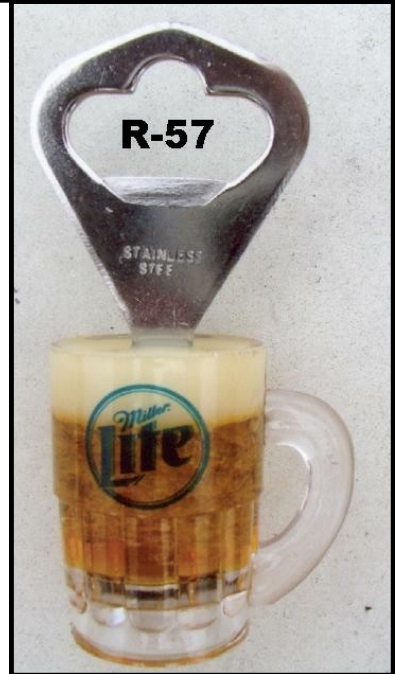
W-19103 LAKE ST.
 ANIWA, WI. 54408

715-449-2075 or
pigpen1952@juno.com

R-54
 MAN FIGURAL
 DRINKING STEIN
 MAGNET ON BACK
 MARKED
 "MADE IN CHINA"
 4 1/4"
 MIKE KREJCI
 1. J.
 LEINENKUG
 EL BREW-
 ING CHIP-
 PEAW
 FALLS, WI



R-57
 BEER MUG
 MAGNET ON BACK
 MARKED
 "STAINLESS STEEL"
 3 1/2"
 MIKE KREJCI
 1. MILLER LITE
 (IN CIRCLE)



R-55
 SURF BOARD
 5 1/8"
 MIKE KREJCI
 1. PRIMO (LOGO) HAWAIIAN BEER



R-58
 SHARK
 3 1/2"
 MIKE KREJCI/JOHN STANLEY
 1. SHARK ATTACK BEER (WHITE ON BLUE) (WHITE
 OF RED) (WHITE ON TAUPE)



R-56
 BASKETBALL
 2 3/4"
 BEN HOFFMAN
 1. ROLLING
 ROCK



X-16
 2005 JFO CONVENTION OPENER
 EAGLE SHAPE AFTER A-47
 3"
 JOHN MLADY/JOHN STANLEY
 1. JUST FOR OPENERS 27TH ANNUAL CONVENTION
 DRINK KRUG'S LUXUS BEER APRIL 13-16, 2005
 OMAHA, NE (JUST FOR OPENERS J. F. O. IN
 ROUND FLAG LOGO) / SAME



“Opener and eBay Trivia”

Don Bull found a Vaughan “Dainty” folding corkscrew, style P-109, marked “Fred Huntzicker, 2024 Mariposa St., Fresno, Calif.”. After some research on the internet Don found the following information. Huntzicker was a partner with Eilert in the Fresno Brewing Company after 1902, see: <http://historicfresno.org/nrhp/fresbrew.htm> and search Huntzicker. Would this be an addition to the Handbook because of the brewery connection? Since Huntzicker was a partner in the Fresno Brewing Co, I would lean towards listing the opener even though the Dainty’s ad is most likely for a non-brewery business he owned. Member’s thoughts and opinions are welcomed.

John Cartwright found a P-8 with the following ad, “Dintenfass Mfg. Co. / Scotch Hop Ale”. Does anyone know if this brand was produced by an American brewery?

This quarter seemed to be very slow opener wise on eBay but when I completed entering the results there were many nice openers and corkscrews sold. Leading off with the “A”s I was very happy to finally add an A-9-8 Eureka to Ed Kaye’s A-9 baseball player collection. Ed had been kind enough to sell me his A-9s about two years ago and out of the six he needed this was probably the key one.

One of the original JFO members, Andy Growe, had listed the opener in the early days of the club. Ed had tried to trade him out of it many times but never really got Andy to respond to any of his trade requests. Andy dropped out of JFO in 1997 and I figured the A-9-8 Eureka was lost forever. Then one in average condition turned up on eBay just before I got Ed’s collection. I lost out as it went for \$150. That was the second strike and when this one turned up and being in excellent condition I thought it would see a lot of competition. After some bidding by unknown collectors, I won out at \$87.51.

The other key beer “A” offered this quarter was the A-16-UL Hubert Fischer. Not much turns up from this brewery and I have to apologize to Ed Johnson for beating him out on this one at \$147.46. John Cartwright was the lucky buyer of the A-17-29 Fresno at \$66.00. This was the first time I had seen this opener offered for sale. John got a nice buy. Soda “A”s did fairly well but the market place continues to see some downward price adjustment on soda openers as eBay has had too many examples of supposedly rare openers being offered.

“B” styles saw many nice “key” types offered. A B-1-21 Fuhrmann & Schmidt brought \$127.51 and was added to Bill Arber’s collection as he closed in on completing his B-1 and B-2 collection (many tough ones remain). The two B-1 Jackson Napa Soda openers were offered only a week apart with the first one being the nicest example I have seen with almost full paint. In fact these two were only the third and fourth examples I have seen. Out of the common key styles, the B-19-211 Gerst really jumps out as two serious Tennessee collectors fought over it before it closed at \$199.48. Another reason you need to come to Nashville to see if you can find this opener!

As usual UL or unlisted beer openers draw lots of bidding and going down the results one can see areas of the country that draw strong bidding such as Michigan and California. With the release of George Vine’s Canadian beer opener book, prices for Canadian openers will only go up especially for older (pre-1950) openers and corkscrews.

The “flat openers” or “C” styles led off with a hot one as Harold Queen really wanted the C-1-8 Liberty as he paid \$215.08. Word is that he now has both the B-1 and C-1 from Liberty Brewing in Tamaqua, Pa. Ben Hoffman owns a C-1-8 Liberty and I had one and decided that John Fisher who was runner-up to Harold for the one on eBay should have mine. John and I worked out a deal and he is now the proud owner of a C-1-8 Liberty (Tamaqua is his hometown). For inquiring minds he paid me \$100 and added a nice O-10 Whistle from York, Pa. to the deal.

Nothing else very unusual in the “C”s and “D”s but I will comment that someone in Hawaii has found a bunch of C-12-13 Hawaii openers as there always seems to be one for sale on eBay and especially in recent months. Most offered are in nice shape. The D-1-9 Strohs is not that rare but always draws spirited bidding and the one this quarter sold for \$52.99.

Many nice examples of wires or “E” types were sold but only one was really special as Larry Moter bought the E-8-UL Germania Brewing from Danville, Pa. for a good price of only \$61.60. Three tough high numbers E-14s were offered with the E-14-859 Miami Valley being bought at a bargain price of \$15.65. The E-14-831 Tivoli went to a Colorado collector and Larry Moter scored again with the E-14-842 Hulls.

Kitchen openers or “F” types had a lot of F-2 Pepsi-Cola spoons sold this quarter on eBay. A fairly common

“Opener and eBay Trivia”

spoon and prices ranged from \$26.00 to \$104.05 with \$26.00 being a more true value. Pepsi collectors are hard to figure on eBay as many good openers go cheap and then they will go crazy over newer common openers. Mike Krejci went on a kitchen buying spree by adding the F-12-2 Waterloo at \$120.00 and the F-13-3 Yuengling at \$51.01 to his collection. F-9 “Ice Picks” seem to have settled in the \$25.00 as several are usually offered each quarter. It was near my birthday (August 29th) and I thought why not get myself a nice opener on eBay. After spending \$211.49 and barely winning the F-32-UL New Braunfels, lets say I had a nice birthday. A lot of money for an F-32 but those Texas collectors can be stiff competition.

Figural bottle openers (FBOC types) saw few good examples and as always many repros and common examples. The highest price I saw was \$500.00 for a repainted Skull (FBOC-423). The opener looked nice but \$500.00 seemed high for a repainted one. It was closely followed by what seemed like a bargain on a FBOC-429 Coyote at \$430.00. Until now I always thought it was a very rare opener to find. With eBay you just never know.

“G” types saw little action but amazingly a hard type to find was offered twice, the G-10-3 Moerlbach combination opener and corkscrew. The nicest one brought the high price of \$210.50. A few “H”s were offered and an H-1-10 Rahr brought \$16.50 despite having a 1/2 inch of the handle cut off. One of the “bidders gone crazy” lots was the I-12-85 Sebewaing bringing \$47.01. It has to be a record for an I-11 or I-12. The seller had the word “rare” in the description and I guess that set bidders off. I am not saying it is common but it is not a \$47.00 rare opener. Since I rarely show “J” results I did notice a J-1-12 Old Tap bringing \$10.60. Maybe “I”s and “J”s have graduated from the \$1 box?

The usual assortment of “K”s this quarter and Rick Poeth did pick up a nice K-5-UL Genesee for \$102.51. It was one with a decal but looked original. Bottle corkscrews, L-2s, had many examples of the A-B offered in all three varieties (including the Malt Nutrine). It still amazes me that ones in good shape can bring \$75-\$125 when they are so common. The open wing version is much harder to find than the other two but sells for the same price. Dave Lendy bought the L-2-18 McAvoy with the top missing and is trying to find a top. If anyone has an extra top or knows of one please contact Dave. The McAvoy is a Patent Pending version and the top is smaller than the com-

mon A-Bs.

Slide-Outs, M-3s, saw Art Johnson upgrade two nice ones in the M-3-27 Trommers at \$113.61 and the M-3-33 Moose at \$177.49. Both were near excellent to excellent and he got a great deal in the Trommers (only because Harold Queen was at NABA and did not see it for sale). All of the sudden M-19-2 Millers have started bringing decent prices the last few months. For a long time \$10-15 was tops and now they bring \$30-40 and on up.

What else can I say about the “Fake” M-19 Coca-Cola openers. The latest “scam” is to say they are the 1948 version and hope some fish are reeled in. One was at \$211.39. Lemp bullets, type M-25, usually bring \$30-\$50 but like the L-2 A-Bs have prices usually much higher than that. Harold Queen scored a great buy in a “Private Auction” on eBay (you have to register with the auction company that is using eBay) when he bought a M-73-14 Becker and Budweiser slide-out corkscrew for \$70.00 (he had to add a 10 percent buyer’s premium).

“N” types produced several nice winners for buyers. Dick Friedman got a great looking N-9 Park Coca-Cola Bottling from Livingston, MT for \$133.50. Jeb Burruss battled with Mike Krejci for a N-50-4 Lone Star. He won out at \$133.99 which tied Mike but since he bid first got the opener. I tried to sneak in and get a trader in the N-80-1 Jax but was beaten out at \$116.49. Craig Green is the proud owner of the N-103-1 Spokane at \$230.49.

Wall mount soda and beer openers saw lots of good action this quarter. Even though I really like O-4s, I let Mike go for the O-4-21 Effinger and he was successful at \$83.00. I believe a wall mount collector from Streator, IL was second and his name is Bob Stahly. It had been a good while since an O-5-39 Schlitz was sold and this one was in average condition but brought a strong price at \$481.00. Other examples on eBay have brought in the \$300-\$450 range. The much sought after O-5 Glascock Bros Coolers (they made vending machines) had two examples sold with the high one being \$416.69.

I was glad that I owned a P-22-UL Pabst as Mike drove his truck over everyone winning this one at \$137.50. A side mount Delaware Punch was sold at a low end price of \$260.00. Then we come to the “King” of the soda wall mounts, an O-505 Big Bill. It is the first one I have seen that went for a multi-day auction. I got one last year on eBay using Buy-It-Now for \$180.00. After seeing the

“Opener and eBay Trivia”

one sell this quarter for \$1,026.00 was I glad I lucked into that one last year. The one just selling had been repainted and that was listed but two aggressive bidders went after it. I was expecting \$500 maybe \$600 for the final price but never \$1,000. Another couple examples have been on the market the last couple of years. The ending price might bring some more on the market. I did think about trying to sell mine but what the heck, its only money. Several nice “long neck” O-505s were sold and as always many examples of the O-505 Coca-Cola were sold.

Beer corkscrews, “P”s, saw some good action, the usual A-B knives but nothing real exciting in this area. A P-1-17 A-B wire corkscrew with “Clough’s Patent” brought \$203.50 as the general corkscrew collectors chased after this one. John “Woody” Cartwright made his usual haul of nice wood corkscrews, including several P-19s, P-54s and wood “T”s. I was amazed that a worn out P-13-1 Schlitz sold for \$152.50. A nice P-67-1 Krueger brought \$302.99 as the general corkscrew collectors chased this one also. I manage to score with the P-164-1 Lembeck and Betz and a nice P-175-UL Bozeman. The P-164 was only average condition and not near as nice as it appeared in the pictures (this is certainly one of the down sides to eBay).

General corkscrews saw many nice International examples sold. The top seller was a French 19th Century Delarbe bringing \$5,077.49. Don Bull sold a collection of about 450 corkscrews in 170 lots with 71 successful bidders from 14 countries. The top lot was a US 1878 Tucker Patent bringing \$1,913.88. Across the board some examples of corkscrews are seeing prices drop as too many appear on eBay but overall the corkscrew market remains very strong with a wide range of collectors chasing after those rare corkscrews.

Don Bull sent out the following “Buyer Beware” email on August 21st.

A number of currently produced reproduction corkscrews are now being offered on ebay from various sellers. See: <http://www.planetadeagostini.es/ficha.php?id=30&pagina=todas>

These reproductions include the Empire, the Traifor, French Cage, Lund Lever, British Made Tin Opener (I have one - it is a crappy reproduction - it doesn't even have the can cutter), a Lazy Tong (also crappy made), a roundlet, a Champagne tap, and many more. The bone

figures also continue to turn up.

Buyer Beware! - Know the seller! (Thank you Don Bull.)



Here are two new bet buckle openers offered by Dogfish Brewing Co of Delaware (they have two locations). Check out their web site at www.dogfish.com.



E-8-UL Germania Danville PA bought by Larry Moter on eBay. First listing for an opener from this brewery.

“Opener and eBay Trivia”

A-001-016	Montana	\$22.47	A-016-UL	Hubert Fischer Brewery Hartford Conn	\$147.46	B-002-999	Coca-Cola Brass	\$81.00
A-001-036	Furniture City	\$54.79				B-004-002	Scheidt Var A	\$30.00
A-001-045	Gipps (Fair)	\$25.49	A-017-029	Fresno (EX)	\$66.00	B-007-005	Heurich	\$59.00
A-001-047	Santa Cruz	\$42.02	A-017-999	Coca-Cola In Bottles	\$149.51	B-007-999	Rainbow Ginger Ale	\$29.99
A-001-063	Union Malt	\$24.49	A-020-011	Deer Park (EX)	\$41.99	B-008-009	Woolners	\$31.09
A-001-063	Union Malt (EX)	\$19.28	A-020-018	Elfenbrau	\$46.00	B-013-004	Fink	\$43.01
A-001-UL	Stone Malt Youngstown OH	\$26.01	A-020-021	Hofbrau	\$34.99	B-014-011	Dutch	\$14.60
A-003-012	Stone Malt	\$16.75	A-020-024	Belmont	\$26.79	B-014-045	Washington	\$21.00
A-004-030	Preferred Stock	\$31.90	A-020-025	Homestead (EX)	\$47.99	B-014-115	Minneapolis	\$12.61
A-005-001	Golden Ribbon (EX)	\$21.49	A-021-011	Cararact	\$29.99	B-014-999	Coca-Cola Greenwood	\$32.17
A-005-006	Sebewaing	\$55.00	A-021-039	Foss-Schneider	\$26.01	B-014-999	Pepsi=Cola Bethlehem	\$37.00
A-005-011	Jones	\$24.29	A-021-132	Trainers	\$29.99	B-015-004	Huebner	\$26.00
A-005-018	Flecks	\$32.00	A-021-999	Cheerwine	\$26.00	B-017-004	Centennial (EX)	\$68.00
A-007-022	Schlitz	\$22.72	A-021-UL	Blatz Cor-Betta Ice Cream Denver	\$28.99	B-018-015	Chattanooga	\$31.00
A-008-001	Ruppert (EX)	\$30.99	A-026-001	Empire State (EX)	\$38.00	B-018-226	South Bend	\$20.50
A-009-001	Buffalo	\$29.00	A-029-999	Dr Pepper (Spinner)	\$124.50	B-018-278	Helb	\$29.90
A-009-001	Buffalo Var A	\$56.00	A-029-999	Pepsi=Cola	\$37.99	B-018-414	Fountain City (Fair)	\$38.77
A-009-004	Leisy	\$25.29	A-030-004	Schotts	\$26.99	B-018-416	Graf Bros	\$36.05
A-009-004	Leisy	\$20.99	A-035-018	Walla Walla	\$41.97	B-018-463	Celilo	\$51.01
A-009-008	Eureka (EX)	\$87.51	A-035-033	Finks	\$79.99	B-018-473	Erie	\$30.00
A-009-008	Kamm & Schellinger	\$39.99	A-035-043	Westchester (EX)	\$34.99	B-018-605	Oregon Yeast	\$31.50
A-009-012	Ringler Var B	\$27.55	A-038-001	Hamms	\$76.01	B-018-623	Weisbrod & Hess	\$21.76
A-009-999	Hires Root Beer	\$37.52	B-001-008	Hamms	\$28.57	B-018-UL	Purity Liquid Malt	\$41.01
A-009-999	Peckman Minersville PA	\$18.05	B-001-021	Fuhrmann & Schmidt	\$127.51	B-019-002	Bartels	\$15.50
A-013-018	Gamble	\$72.71	B-001-999	Jacksons Napa Soda	\$81.00	B-019-027	Oertel	\$15.50
A-015-026	South Bend	\$34.99	B-001-999	Jacksons Napa Soda (EX)	\$100.69	B-019-047	Flecks	\$27.50
A-015-999	Coca-Cola In Bottles	\$86.00	B-002-001	Blatz Var A	\$68.76	B-019-052	Kiewels (2 Examples)	\$66.00
A-015-999	Coca-Cola In Bottles (Good)	\$86.00	B-002-001	Blatz Var A (EX)	\$45.00	B-019-128	Huebner (Good)	\$36.50
A-016-008	Cuckoo Malt	\$32.00	B-002-006	Hamms (Good)	\$62.75	B-019-149	Des Moines	\$56.99
			B-002-025	Krug	\$31.99	B-019-165	Davenport	\$23.35
			B-002-999	Coca-Cola (Brass) (EX)	\$50.00	B-019-195	Walla Walla	\$40.99
						B-019-211	Gerst	\$199.48
						B-019-251	Mt Clemmens	\$77.00

“Opener and eBay Trivia”

B-019-CAN	Redwood Lager	\$64.88	B-023-CAN	Kuntz The Beer That Made Waterloo Famous	\$36.00	E-004-303	Metz	\$7.27
B-021-011	Diehl	\$20.50	B-023-CAN	Star Brewing	\$34.88	E-004-999	Coca-Cola	\$48.17
B-021-020	Garden City	\$56.55	B-024-065	Grace Brothers	\$12.01	E-004-999	Dr Pepper Good For Life	\$27.61
B-021-044	Kalamazoo (Good)	\$41.99	B-027-001	Miller Var A	\$47.50	E-005-999	Coca-Cola (EX)	\$46.00
B-021-054	Muskegon	\$86.85	B-027-001	Miller Var A (EX)	\$43.50	E-006-059	Als	\$19.28
B-021-056	Mutual Union	\$26.00	B-031-005	Kuebler	\$36.00	E-006-061	Empire	\$24.99
B-021-061	Olt	\$45.99	B-032-003	Graf	\$33.52	E-006-116	Moose	\$24.25
B-021-082	Tacoma	\$29.99	B-033-002	Heileman (EX)	\$39.41	E-006-221	Northern	\$22.37
B-021-192	Petersen	\$66.65	B-045-999	Blank	\$100.99	E-008-010	A B C	\$23.49
B-021-276	Los Angeles	\$76.57	B-045-999	Novelty States Salt Lake City	\$125.05	E-008-090	Salt Lake City	\$31.99
B-021-277	Majestic	\$14.30	B-047-001	Hamms	\$36.00	E-008-999	Hermann Ginger Ale	\$12.27
B-021-341	Finks	\$28.50	B-060-004	Feigenspan	\$63.00	E-008-CAN	Ready Beverages Fairville N B	\$33.55
B-021-382	Mt Hood	\$19.99	C-001-008	Liberty (Good)	\$215.08	E-008-UL	Germania Brew Danville PA	\$61.60
B-021-426	Jetters	\$26.02	C-002-001	Phoenix (EX)	\$41.00	E-013-004	Eckerts (Sold as E-14)	\$29.00
B-021-470	Kazmaier	\$19.50	C-002-001	Phoenix (EX)	\$35.87	E-014-074	Engesser	\$41.00
B-021-487	Hyde Park	\$19.49	C-012-013	Hawaii	\$13.00	E-014-275	Zett	\$20.50
B-021-562	Tru-Age	\$31.00	C-012-013	Hawaii (EX)	\$31.99	E-014-278	Storck	\$41.99
B-021-999	Pepsi-Cola	\$82.00	C-012-092	Peerless	\$17.48	E-014-278	Storck	\$31.87
B-021-UL	Bismark Beer	\$33.68	C-013-073	Muessel	\$21.49	E-014-278	Storck	\$24.99
B-021-UL	Hinchliffe	\$51.99	C-013-133	Glennons	\$29.09	E-014-288	Union	\$9.99
B-021-UL	Paducah Brewery / \$1000 Pure Malt Beer	\$31.01	C-013-174	Gettelman	\$35.21	E-014-368	Glasgo	\$21.47
B-022-010	Jung	\$18.50	D-001-001	A B B A Var A	\$18.25	E-014-646	Tennessee	\$20.50
B-022-078	Star	\$36.00	D-001-001	A B B A Var B	\$17.25	E-014-663	Old Hill Top	\$24.42
B-022-999	Jefferson Bottling Works Iowa	\$28.51	D-001-009	Strohs	\$52.99	E-014-831	Tivoli	\$44.66
B-023-024	Overland	\$35.00	D-001-038	A B C	\$29.01	E-014-842	Hulls	\$46.67
B-023-035	Buckeye	\$15.50	D-003-005	Terre Haute	\$20.50	E-014-859	Miami Valley	\$15.65
B-023-040	Kim	\$29.99	D-003-021	Reisch	\$31.09	E-017-003	Centlivre	\$43.00
B-023-096	Mitchell	\$53.00	E-001-016	Belmont	\$46.99	E-025-006	Krueger	\$19.49
B-023-CAN	Indian Head Welland Beer	\$29.99	E-001-038	Boyertown	\$30.00	F-002-007	Potosi (EX)	\$21.71
			E-002-017	Progress	\$15.50	F-002-999	Pepsi-Cola	\$51.00
			E-002-032	Maier	\$16.29	F-002-999	Pepsi-Cola (EX)	\$26.00
			E-003-048	Fleckenstein (EX)	\$20.50	F-002-999	Pepsi-Cola (EX)	\$89.55
			E-003-064	Great Falls	\$13.00	F-002-999	Pepsi-Cola (Mint)	\$104.05
			E-004-233	Milwaukee	\$22.49	F-002-999	Pepsi-Cola (Mint)	\$51.00

“Opener and eBay Trivia”

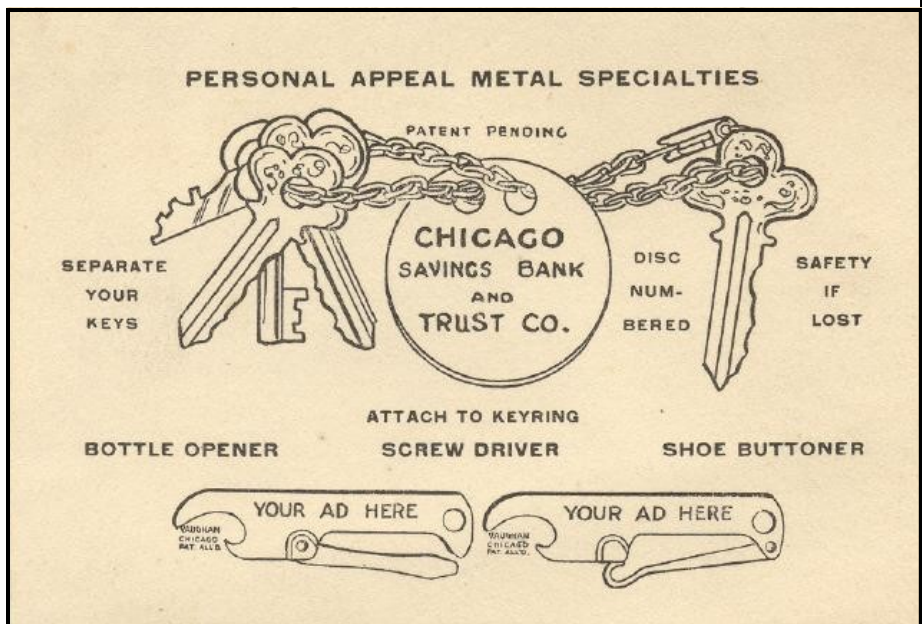
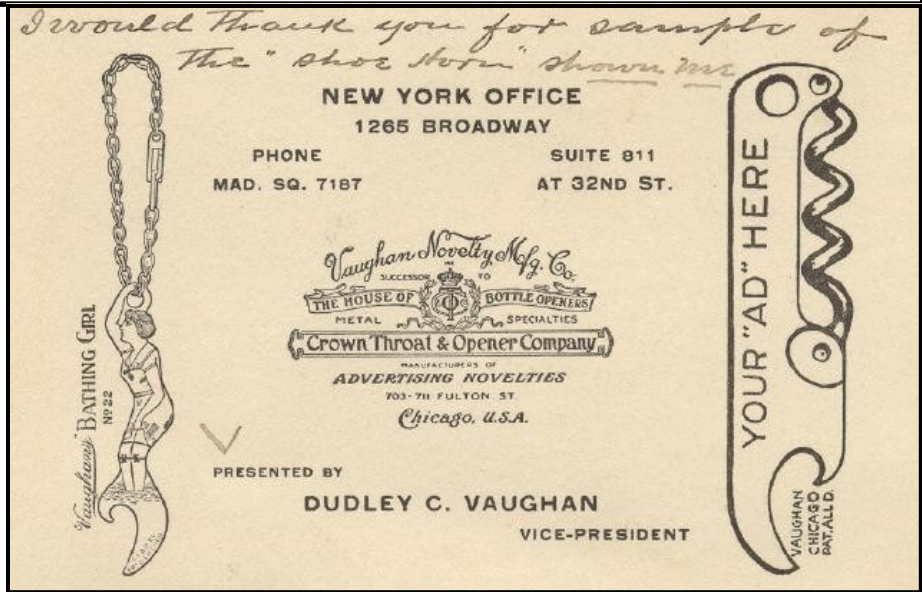
F-003-001	Potosi (MIP)	\$31.00	H-007-004	Fox Head	\$15.49	M-019-002	Miller	\$33.55
F-005-034	Stone Malt	\$34.50	H-008-999	Pepsi-Cola (EX)	\$37.33	M-019-002	Miller	\$26.55
F-005-043	Stone Malt	\$19.39	H-008-999	Pepsi-Cola (EX)	\$25.49	M-019-999	Coca-Cola (Fake Adv as 1948 Made)	\$211.39
F-005-999	Coca-Cola Coatsville	\$61.56	I-010-002	Red Top	\$16.51	M-019-999	Coca-Cola (Fake)	\$13.49
F-006-077	Malt 44 Hops	\$12.84	I-012-085	Sebewaing (Sold as "Rare")	\$47.01	M-019-999	Coca-Cola (Fake)	\$13.01
F-006-999	Coca-Cola Waycross GA	\$90.89	J-001-012	Old Tap	\$10.60	M-019-999	Coca-Cola (Fake)	\$26.07
F-009-001	Cleveland & Sandusky	\$23.01	K-002-006	Pearl	\$112.50	M-019-999	Coca-Cola (Fake)	\$44.76
F-009-008	Gutsch	\$27.88	K-002-007	Regal (Repainted Black)	\$71.01	M-025-001	Lemp	\$97.00
F-012-002	Waterloo	\$120.00	K-004-001	Pabst Var A	\$102.50	M-027-001	Lone Star (EX)	\$51.00
F-013-003	Yuengling	\$51.01	K-005-010	Lone Star	\$51.01	M-029-083	Jax	\$19.50
F-027-999	Coca-Cola / Sterilized	\$76.56	K-005-UL	Genesee (Decal)	\$102.51	M-047-CAN	Sheas	\$59.88
F-032-UL	New Braunfels Brewing TX	\$211.49	L-002-001	A-B Var B	\$57.79	M-058-001	Miller	\$25.00
F-507-999	Coca-Cola	\$79.99	L-002-002	A-B Malt Nutrine (EX)	\$115.45	M-073-014	Budweiser Beckers (Private Auction)	\$70.00
FBOC-043	Grass Skirt Greek	\$431.00	L-002-005	Eldridge	\$112.50	M-073-999	1934 Chicago WF (EX)	\$67.09
FBOC-043	Grass Skirt Greek (EX)	\$425.00	L-002-005	Eldridge	\$152.50	M-073-999	Miami Is Yours (EX)	\$68.00
FBOC-065	1948 Donkey	\$147.50	L-002-018	McAvoy (Top Missing)	\$127.50	M-077-001	Pfeiffer (Good)	\$110.29
FBOC-423	Skull (Repainted)	\$500.00	L-004-059	Fox Head 400	\$26.00	N-004-999	Nugrape (EX)	\$57.51
FBOC-429	Coyote	\$430.00	M-002-005	Bartholomay	\$76.00	N-004-999	Pop Kola Braser Co	\$59.55
G-001-023	Quandt	\$34.65	M-002-013	Canandaigua (EX)	\$103.50	N-008-002	Haberle	\$66.01
G-001-041	Seitz	\$23.38	M-002-999	Hires Root Beer	\$59.99	N-009-999	Park Coca-Cola Livingston MT (EX)	\$133.50
G-001-999	Pepsi=Cola 5c	\$35.00	M-003-009	Brackenridge (EX)	\$56.99	N-009-999	Pepsi=Cola	\$31.51
G-001-999	Pepsi=Cola Greenkorn	\$29.99	M-003-022	Flock	\$51.00	N-010-001	Krueger	\$24.50
G-004-999	Dr Pepper	\$78.75	M-003-027	Trommers (EX)	\$113.61	N-011-010	Renner	\$17.20
G-005-999	Welchs	\$22.02	M-003-028	Victor (EX)	\$39.99	N-013-002	National 1966 Orioles	\$16.25
G-009-046	Stoneys	\$33.00	M-003-029	Victor	\$20.50	N-024-001	Stag (EX)	\$23.05
G-009-055	Potosi	\$46.83	M-003-032	Flock	\$51.00	N-027-003	Holiday	\$22.26
G-010-003	Moerlbach	\$127.50	M-003-032	Lang (EX)	\$59.99	N-027-UL	Hamms Litchfield Bot Minn	\$26.01
G-010-003	Moerlbach (EX)	\$201.50	M-003-033	Moose	\$177.49	N-029-999	Dr Pepper	\$57.65
H-001-010	Rahr (End Sawed Off)	\$16.50	M-003-999	Moxie (EX)	\$38.77			
H-002-118	Yuengling	\$22.50	M-003-CAN	Sheas	\$33.26			
H-005-021	Hamms	\$29.99	M-006-011	Signal (EX)	\$29.99			
H-006-007	Alaska	\$13.49	M-015-001	Miller	\$46.00			

“Opener and eBay Trivia”

N-029-999	Dr Pepper	\$60.99	O-502-999	Delaware Punch	\$260.00	P-025-003	A-B 1952 No Name (Mint)	\$135.00
N-032-001	Budweiser (EX)	\$36.01	O-505-999	Big Bill	\$1,026.00	P-025-003	A-B MIB w/ Pouch 1952	\$182.18
N-040-017	Budweiser (EX)	\$48.24	O-505-999	Big Boy	\$91.00	P-025-003	A-B Schrade (EX)	\$222.51
N-042-001	Budweiser	\$32.00	O-505-999	Coca-Cola	\$47.00	P-025-003	A-B Schrade (EX)	\$268.75
N-042-002	Busch Bavarian	\$45.44	O-505-999	Coca-Cola (MIB)	\$82.00	P-025-999	A-B Knife 2001 Edition (MIB)	\$179.50
N-050-004	Lone Star (Good)	\$133.99	O-505-999	Orange Crush	\$38.50	P-026-008	A-B (EX)	\$561.51
N-079-999	Pepsi-Cola	\$61.00	O-505-999	Orange Crush	\$31.00	P-033-003	Cataract (Good)	\$26.00
N-080-001	Jax (EX)	\$116.49	O-505-999	Whistle (EX)	\$78.50	P-036-002	Metz (EX)	\$27.25
N-082-999	Double Cola (EX)	\$41.00	O-505-999	Whistle (Good)	\$45.99	P-036-UL	Peerless La-Crosse Wis	\$47.99
N-085-001	West End	\$53.51	O-507-999	Pepsi-Cola	\$35.00	P-042-001	Bartholomay (Good)	\$41.01
N-103-001	Spokane	\$230.49	O-508-999	Pepsi=Cola	\$43.52	P-054-038	Budweiser Sa-loon	\$39.56
N-510-999	Coca-Cola	\$57.52	O-508-999	Pepsi=Cola	\$32.66	P-067-001	Krueger	\$302.99
N-510-999	Coca-Cola (EX)	\$37.17	O-509-000	Pepsi-Cola (Good)	\$53.99	P-096-001	Gutsch (Good)	\$47.99
O-002-001	Simon (EX)	\$23.50	O-509-999	7Up	\$20.50	P-103-002	Maier & Zobelein	\$45.01
O-002-999	Pepsi=Cola (EX)	\$89.88	O-511-999	Coca-Cola (Good)	\$80.50	P-164-001	Lembeck & Betz	\$122.51
O-002-999	Pepsi-Cola (Good)	\$46.00	P-001-005	Green Tree	\$56.00	P-175-UL	Bozeman Beer	\$72.71
O-004-021	Effinger	\$83.00	P-001-017	A-B Clough's Patent	\$203.50	P-512-999	7Up (MIB)	\$36.00
O-005-011	Acme	\$46.21	P-003-001	Pabst (EX)	\$81.00	Q-008-033	Pearl	\$24.56
O-005-023	Regal Pale	\$36.50	P-003-ENG	Worthington Ales	\$72.00	R-003-005	Iroquois (Painted)	\$47.99
O-005-028	Miller (Large Letters)	\$96.55	P-007-036	Oertel	\$20.51	R-029-UL	Miller Lite	\$15.57
O-005-039	Schlitz	\$481.00	P-008-103	Terre Haute (EX)	\$75.69	Z-Corkscrew	English 1867 Thomason XVI Var	\$2,729.00
O-005-999	Climax (MIB)	\$39.50	P-008-128	Dubuque	\$44.89	Z-Corkscrew	English 1868 Twiggs Patent	\$1,901.00
O-005-999	Climax (MIB)	\$36.50	P-008-145	A B C (EX)	\$65.00	Z-Corkscrew	English 1874 Burgess & Fenton Patent	\$2,549.96
O-005-999	Crosley	\$65.70	P-008-UL	Augusta Brewing Augusta GA	\$74.69	Z-Corkscrew	English 19th Cent Folding Beau Brummel	\$1,172.12
O-005-999	Enjoy Red Rock Cola	\$139.00	P-009-014	Gipps	\$95.11	Z-Corkscrew	English Rotary Eclipse Bar-mount	\$912.44
O-005-999	Glascock Bros	\$260.00	P-013-001	Schlitz (Worn)	\$152.50			
O-005-999	Glascock Bros	\$416.69	P-014-002	Greisedieck Bros	\$24.99			
O-005-999	Grapette (EX)	\$47.78	P-014-999	Coca-Cola	\$50.99			
O-005-999	Nehi	\$100.00	P-016-001	Narragansett	\$35.36			
O-005-999	Nehi	\$89.66	P-016-001	Narragansett	\$40.89			
O-005-999	The Liquid	\$26.50	P-019-UL	Anheuser-Busch Monmouth ILL	\$67.96			
O-006-001	Esslinger (EX)	\$79.99	P-024-002	Anheuser-Busch	\$46.75			
O-017-001	Rolling Rock (Mint)	\$76.00						
O-022-UL	Pabst	\$137.50						

“Opener and eBay Trivia”

Z-Corkscrew	French 1890s Pocket Depose B&C	\$628.00
Z-Corkscrew	French 19th Cent Delarbe	\$5,077.49
Z-Corkscrew	German 1894 Gathen Folding Bell	\$1,245.68
Z-Corkscrew	German 1899 Bonsa, Everts Patent	\$881.30
Z-Corkscrew	German Half-Pearl Folding Legs	\$635.67
Z-Corkscrew	German Pearl Folding Legs	\$835.78
Z-Corkscrew	German Waiter's Friend (Pic of Bismark)	\$387.53
Z-Corkscrew	US 1876 Barnes Patent	\$921.00
Z-Corkscrew	US 1876 Williamson Power Cone	\$367.94
Z-Corkscrew	US 1878 Tucker Patent	\$1,913.88
Z-Corkscrew	US 1878 Tucker Patent	\$2,025.00
Z-Corkscrew	US 1884 Curley Metal T Patent	\$531.99
Z-Corkscrew	US 1884 Hicks & Reynolds Patent	\$305.00
Z-Corkscrew	US 1894 The Detroit Ladies Leg	\$2,225.00
Z-Corkscrew	US 1926 McLean Patent	\$308.88
Z-Corkscrew	US 1932 Bridge-water Patent	\$316.00
Z-Corkscrew	US 1932 Bridge-water Patent	\$237.06
Z-Corkscrew	US Crosby Pup (EX)	\$965.00
Z-Hage nauer	Deco Horse Style Opener	\$225.50



Vaughan Business Card

Above are two sides to a business card for Dudley Vaughan, Vice-President for The Vaughan Novelty Mfg. Co. successor to The House of Bottle Openers Crown Throat & Opener Company. I would date this card to late teens or early twenties. Dudley must have been a family member. Ever who received the card requested samples of the “shoe horn” opener that was shown to them. Hopefully some day information will turn up on the history of the Vaughan family and about their company. Interesting also are the choice of openers on the business card, an A-1 “September Morn”, three “Nifty” type styles (B-12, B-13 and B-48), and a key ring charm. Finally it appears that Dudley was head of their New York office since that is the main address shown.



Art Johnson's M-3-27 Trommers

JFO and OTHER CLUBS (Newsletter Name in Italics All Clubs Offer an Annual Convention)

American Breweriana Association (ABA): *American Breweriana Journal* (bi-monthly) on breweriana collecting. Dues \$25.00/year. Chris Galloway, Executive Director, PO Box 11157, Pueblo CO 81001

Canadian Brewerianist: *The Canadian Brewerianist* (bi-monthly) on Canadian Breweriana collecting. Dues \$24.00/year (US Funds). Loren Newman, 2978 Lakeview Trail, Bright's Grove, Ontario, CANADA, N0N 1C0

Canadian Corkscrew Collectors Club (CCCC): *The Quarterly Worme* (quarterly) on corkscrew collecting. Dues \$30.00/year. Milt Becker, PO Box 9863, Englewood NJ 07631

East Coast Breweriana Association (ECBA): *The Keg* (quarterly) on breweriana collecting. Dues \$25.00/year. ECBA, PO Box 64, Chapel Hill NC 27514

Figural Bottle Opener Club (FBOC): *The Opener* (quarterly) on cast iron openers. Color guide book: \$23.85/Non Members or \$18.85/Members. Dues \$20.00/year. Lyle Moreland, 864 Jeanette Ave, Baltimore MD 21222

Just For Openers (JFO): *Just For Openers* (quarterly) on all areas of opener collecting (with an auction each issue). Dues \$20.00/year. John Stanley, PO Box 64, Chapel Hill NC 27514-0064

National Association Breweriana Advertising (NABA): *The Breweriana Collector* (quarterly) on breweriana collecting. Dues \$25.00/year. NABA, PO Box 64, Chapel Hill NC 27514-0064

SHOWS & CONVENTIONS (Sources For Openers and Corkscrews)

2005 Jul 13-16 – 33rd Annual ECBA Convention – Ramada on the Square Wilkes-Barre PA – ECBA Members Only (Saturday Public Show). Contact John Stanley, PO Box 64, Chapel Hill NC 27514-0064, (919) 419-1546

2005 Aug 3-7– 34th Annual NABA Convention – Marriott South Bend IN – NABA Members Only (Saturday Public Show). Contact John Stanley, PO Box 64, Chapel Hill NC 27514-0064, (919) 419-1546

2005 Sep 22-24 – 23rd Annual Midwest Breweriana Show – Mid America Center Council Bluffs IA – JFO Members Welcomed. Contact John Mlady (402) 345-7909 or Bill Baburek, (888) 569-7924 E-Mail bjbaburek@cox.net

2006 Feb 15-18 – 27th Annual Blue & Gray Breweriana Show – Ramada Inn Holidrome Fredricksburg VA – All JFO Members Welcomed. Contact: John Fisher, PO Box 953, Benedict MD 20612-0953, (301) 274-3340

2006 Apr 19-23 – 28th Annual Just For Openers Convention – Holiday Inn Select Opryland Nashville TN – All Opener / Corkscrew / Breweriana Collectors Welcomed. Contact: John Stanley, PO Box 64, Chapel Hill NC 27514-0064 E-Mail jfo@mindspring.com

2005 Jun 13-17 – 25th Annual ABA Convention – ???– ABA Members Only Only (Saturday Public Show). Contact Christine Galloway, Executive Director, PO Box 11157, Pueblo CO 81001

2006 June 17 – Annual FBOC Convention Reading PA – JFO Members Welcomed. Contact Sandra Emme emmyaward@yahoo.com

Nice Starr folding corkscrew that was offered by Don Bull in his collection that sold on eBay during September. It was the first Starr Corkscrew wall mount I had seen with advertising on the neck for Starr. (Sold for \$280).



WANTED (Please remember there is no charge for Ads)

Golden Glow Openers: A-1-9, B-23-149, E-14-787, O-4-22 & A-12-12 Grace Bros. Also any Breweriana from Rainier Brewing Co (Seattle WA, LA CA, SF CA), Golden West Brewing Co of Oakland CA & Port Townsend Brewing Co. of Port Townsend WA. Buy/Trade. John Cartwright, 1548 Via Arroyo, Paso Robles CA 93446, (805) 226-9270

A-3-19 Stone Malt Akron. Great Trades or Buy. Jeb Burruss, 318 Lost Oak Dr, Canyon Lake TX 78133, (830) 899-7241

A-22-1 Ballantine. Great Trades Available. Jack Ford, 5351 Boyd Ave, Oakland CA 94618, (510) 655-5393

A-9s: 21 Amber, 26 Penn, 46 Tivoli, 29 Waldorf, B-9-2 Salinas, B-9-10 Ambrosia, B-7 (Beer), B-22 (Beer), B-31-7 Billings, B-31-8 Valley Brew, B-31-11 Bellingham Bay, C-21-6 Grand Rapids, D-16-1 New Kentucky, E-17s: 1 American, 7 ISD, 9 Everett, 12 Lion, G-1s: 31 Griesedieck Bros, 68 Glennon, 69 Leidiger 3-V Bev, 70 Fox Lake, G-5s: 2,9,18,22,23,27,28,29,33,39,40,45,46,48,50, H-1s: 8,12,21,26,27,31,34,35,39,42,44,51,52, O-1-2 Leidigers, O-505 Lime Cola & O-505 Saegertown (Starr Long Necks)
John Stanley, PO Box 64, Chapel Hill NC 27514

A-17 "Wilber Brewery" & P-8 Corkscrew "Omaha Brewing Association" (EX Cond. Only). Will purchase outright. John Mlady, 1506 S 25th St, Omaha NE 68105-2611, (402) 345-7909

A-43-Dixie. (Buying). Marc Benjamin, 167 Nixon Beach Rd, Edenton NC 27932, (919) 482-2099

B-24-95 Flecks Beverages. Al Fleckenstein, 2445 NW Raleigh St, Portland OR 97210, 503-223-0123, flecks@spiritone.com

B-45, B-66, I-7, P-72, P-100, R-14 types with a Corkscrew (Beer/Non-Beer) & Silver Top Beer Openers. Herb Danziger, 550 Cherry Ct, Birmingham MI 48009-1459, (810) 646-9470

"E"s! Have Trade List (Various Types) or Will Buy. Top 10 List: E-6-208 Old Lancaster, E-14-832 Uneeda, E-7-77 Lima, E-4-207 Yosemite, E-14-626 Modesto, E-16-11 Ganser, E-18-4 American, E-8 #24 & #25 New Braunfels, E-23-11 Evansville. Larry Moter, 10149 Michaels Rd, Woodford VA 22580, (804) 448-3928 E-Mail acneca@aol.com

Bond and Lillard Openers (would like to buy). Have A-29, would like any others. Lillard is a family name. George Love, 4301 Forest Plaza Dr, Hixson TN 37343, (423) 877-6006

C-49-11 Bud Fort Collins, C-49-21 Coors Original, C-49-22 Flying Dog, C-49-33 Moose, C-49-34 Rock Bottom, & E-2-19 Yuengling Por-Tor (HELP!!!!!!) Harold Queen, 1001 Centre Ave, Jim Thorpe PA 18229, (717) 325-2612

"E" Type Openers Wanted. Will Trade my "C", "E" and "I" Types. Send trade list and I'll send my list. Ralph Tewksbury, 84 Wildwood Dr, Parkersburg WV 26101 (304) 863-3627

Wanted I-2s # 1 Atlas, 2 Beverwyck, 3 Drewrys, 7 Mitchell, J-8s #13 Ballantine, 14 DuBois. Cash or Trade. Ben Hoffman, 213 Simmons Rd, Perkiomenville PA 18704, (610) 287-8243 or Email benbey@netcarrier.com

G-4s: #10 Jung, #13 Point, #15 520, #18 Southern, #20 Walters, also "I-5"s, "E-14"s, "B-24"s, "G-1"s. Send for Want List. John Patton, 9224 Sugarloaf Dr, Redding CA 96001

"I" need help completing my collection of "I"s. Please send me a list of your extra "I"s with prices. I will respond!

Tom Gormally, 22555 Cardiff Dr, Santa Clarita CA 91350, 661-291-1392, Email tomphyllis@earthlink.net

Serious I-7 Collector: \$10 for a Photocopy of I-7-46 Berg-hoff. Does It Exist??? Hale Milano, 506 Springhouse Road, Camp Hill PA 17011-1454, (717) 737-5067

O-5 Beer & Soda. Have several mint M-18 Budweiser to Trade or Pay Cash if Price is Right. C J Coursey, 2865 Fleetwood Cove, Greenville MS 38701-8015, (662) 332-4060

Atlas Prager Openers: A-21-46, A-21-69, B-24-58, B-24-103, B-28-2, E-5-70, E-7-1, E-8-32, E-14-755, E-14-657, E-14-719, F-4-36, H-2-166, N-10-6, N-10-7, O-8-3, O-8-17, P-66-4.
Dave Lendy, 1927 Allen Dr, Geneva IL 60134, (630) 208-6950

Bottle Shaped and/or Openers with Bottle on them. Especially want M-1-7 King's Chremal & M-2-5 Bartholomay!
Gary Deachman, PO Box 438, North Woodstock NH 03262

Chester PA Openers: B-18-192 Peerless, B-21-557 Haser, C-12-71 Chester, P-7-46 Stoeckle, and A-17-14 & A-43-3 Soda Openers with ad for "Penn Brand". Joseph Knapp, 211-A Berbro Ave, Upper Darby PA 19082, (610) 352-5055

Cigar Box Openers: HT-5---SHM-2,6,13---DHM-13,15---RBO-1---HKH-7,9---HOR-3---RND-13---SQR-4---NL-6---BB-13,16,17,18---PKT-1,2,5,6,8,9,10---SEP-9---MIS-5,8. Ken Hoesch, PO Box 299, Zeeland MI 49464-0299

Hartford, Connecticut Openers & Breweriana Wanted, esp. E-8-61 Fischer & P-17-4 Columbia. Also general CT and New England Beer Openers. Edward Johnson, 1300 Poquonock Ave, Windsor CT 06095, johnsoned1777@hotmail.com

Corkscrews-Cork Pullers-Syroco (especially Golden Knight and Clown)-Early US Patents-Anything Unusual. Have many corkscrews to trade or Pay a Competitive Price. Please send description, sketch, photocopy, etc to Paul Luchsinger, 2815 King Rook Ct, Williamsburg VA 23185 (757-345-3984)

Corkscrews & Tin Can Openers: Beer Openers for Trade. Joe Young, 36 S Weston Ave, Elgin IL (847) 695-0108

Corkscrews, Beer Advertising Letter Openers, Beer Advertising Knives, & Postcards depicting Corkscrews. Please send description, photo, sketch, photocopy, or tracing of what you have and advise price wanted. Don Bull, PO Box 596, Wirtz VA 24184, (540) 721-1128, E-Mail corkscrew@bullworks.net

Corkscrews: Esp. Walker's "Waiters & Hallboys" and old Williamson wire shafted "T"s with attachments to wood handle (such as brushes/wire cutters). John Vlossak, 1044 East Eldorado St., Appleton WI 54911, (414) 739-2789

WANTED (Please remember there is no charge for Ads)

Figural Corkscrews and any WASHINGTON D.C. Openers and/or Corkscrews. Sandra Emme, PO Box 1454, Upper Marlboro MD 20773, (301) 627-8207

Openers from **Jamestown Brewing Co, Kuhn's Beer, Chautauqua Brew, Monessen, PA, Independent Brewing Co, Schaefer, & all Cleveland Beers.** Ed Schaefer, PO Box 149, Maple Springs NY 14756, eschaeferbeer@juno.com

Joliet IL Openers: Citizens: B-14-97, C-17-69, E-1-32, E-3-12, E-4-175, K-5-6, O-10-1, P-121-1, Porter: A-17-24, B-18-594, B-18-618, B-21-199, F-6-9, Sehrings: B-21-561, G-9-39.
John Bitterman, E-Mail jebitter@aol.com

Minnesota Openers: A-1-73, A-21,63,77,128, A-23-9, A-29-22, A-33-5,7, A-45-1, B-7-3, B-13-12, O-1-1, O-2-14, O-6-4, O-20-1, P-7-13, P-146-1.
Pat Stambaugh, 718 S Lakeshore Dr, Lake City MN 55401

Montana & Idaho Beer/Brewery Openers & other Breweriana. Also looking for H-8 & L-1 Openers to complete collection. Steve Armstrong, PO Box 741, Kamiah ID 83536, E-Mail sunset@cybrquest.com

Montana Openers-Corkscrews: I need 39 of the 211 in the JFO Handbook. A-21-84,A-43-5,A-45-1,A-45-2---B-5-29,B-18-370,B-18-479,B-18-481,B-18-331,B-18-538,B-21-471,B-21-142,B-21-488,B-21-522,B-22-112,B-52-5---E-1-52,E-2-29,E-4-325,E-9-29,E-13-29---F-8-9---M-29-63---N-38-4---P-7-41,P-8-160,P-8-56,P-17-11,P-18-3,P-18-6,P-62-2,P-66-6,P-83-1. Will trade or purchase. Also interested in any Montana advertising openers (non-Beer). Bill Pattie, PO Box 1126, Big Timber MT 59011, (406) 932-5422

New York State Openers: E-4-345 Koch, G-1-67 Hupfel. Will Buy or Trade. Mark Barren, 6141 Tachi Dr., Newfane NY 14108-9517, (716) 778-9724

J-6s: 2-4-18-19-21-22-23-25-28-29-33-35-36-37-39-42-43-46-47, Will Pay \$4 Each plus Postage. Ollie Hibbeler, 535 Villa Piazza Ct, O'Fallon MO 63366

Pinney Beverage Items Wanted: Pens & Pencils, Bottle & Can Openers, Any item imprinted with **Pinney Beverage Company, Salt Lake City, Utah.** Dave Pinney, 1766 Red Barn Road, Encinitas CA 92024, (760) 753-8151, Email: davecent@tmisnet.com

Schlitz Openers: A-7-22, A-20-52,42,35,51, A-21-58,8,115,79, A-23-7, A-29-58, A-35-30,45, A-53-6, plus A-17-27 Rahr. Will buy or possibly trade. Mike Krejci, W19103 Lake St, Aniwa WI 54408, (715) 449-3523, E-Mail pigpen1952@yahoo.com

Adler Brau Openers: B-18-491, E-4-262, H-11-1, I-17-259, N-83-1. D-9 Openers: #3, 5,9,10, 12, 14, 15, 16, 17, 18, 19. Also Looking for H-7 & H-11 Openers. Russ Adler, W11307 Cty Rd V, Lodi WI 53555-9628, (608) 592-5766

Starr Openers to trade, send for current list. Don Stinson, PO Box 105, 143 Haskins Point Road, Seeley's Bay, Ontario Canada, K0H 2N0, (613) 387-3100, Email: rideaubreeze@bellnet.ca

I-7 Vaughan's Quick & Easy, I-7 45,82,46,79,84,78,54,30,55, 57,81,83. Also any Variations, Non-Beer & Generics. Have Traders/Cash. **Also H-3-34 Continental Can. Have I-7-28 New England for Trade.** Jim Pokrywka, 279 Pearl St, Seymour CT 06483, jimpokrywka@sbcglobal.net

Wisconsin Brewery Openers: Knapstein, Hortonville, Princeton, Hochgreve, Bleser, Shawano & Rahr; esp A-17-27 Rahr. Dan Mayville, E7446 County Road H, Fremont WI 54940-9747

E-14s 3,8,17,20,23,24,27,31,34,35,38,41,43,44,45. Darwin Miller, 32 La Canada Way, Hot Spring Village AR, 71909, 501-922-1615



Sold as a Wall Mount Opener this past Quarter on eBay. Does anyone know for sure? Supposedly the Wolf's teeth act as an opener.

Just For Openers "Auction Guidelines"
Please Note: Fee of 20%
Will Be Charged on Consignments

This auction is a service to members of JFO. Submit consignments by sending a graded inventory list. Reasonable minimum bids can be established for good items. Any openers submitted for the auction should have a minimum value of \$3.00. Money realized will be sent 4 to 5 weeks after closing date.

Write First Before Sending Consignment Items. When Bidding Please! give the Lot Number and a Short Description with each bid.
Remember to at least sign your name on each auction page and keep a copy.
SEND IN YOUR BID SHEETS EARLY
DO NOT WAIT!!!

SELLING (Please remember there is no charge for Ads)

JFO Set Back Issues: 1978-1993 \$30 or 1994-2004 (\$30) (US Shipping Only) John Stanley, PO Box 64, Chapel Hill NC 27514

"American Breweries II": by Dale Van Wieren. **Over 18,000 entries for nearly 8,000 brewing firms, tracing names, addresses, and dates of operation. (\$19 Priority Mail).** John Stanley, PO Box 64, Chapel Hill NC 27514

2005 Handbook of United States Beer Advertising Openers and Corkscrews (contains 15,000 Listings & pictures 1100 Types (Black & White Copies)) . \$20 sent priority mail. John Stanley, PO Box 64, Chapel Hill NC 27514

2005 Inventory of Canadian Beer Advertising Openers & Corkscrews (contains 2,000 Listings & drawings for 250 Types (Black & White Copies)) . \$24 US sent book rate. George Vine, 219 Murray, Greenfield Park, Quebec, Canada J4V 1N5

"Just For Openers" "A Guide to Beer, Soda, & Other Openers" by Donald A. Bull & John R. Stanley, **160 Pages, 380 Color Pictures, \$26.95 plus \$3.95 shipping (US Only).** Bullworks, PO Box 596, Wirtz VA 24184

"Soda Advertising Openers" by Donald A. Bull & John R. Stanley, **160 Pages, Over 275 Color Pictures & 2500 Listings, \$26.95 plus \$3.95 shipping (US Only).** Bullworks, PO Box 596, Wirtz VA 24184

"Beer Advertising: Knives, Letter Openers, Ice Picks, Cigar Cutters and More" by Donald A. Bull, **180 Pages, Over 500 Color Pictures, \$26.95 plus \$3.95 shipping (US Only).** Bullworks, PO Box 596, Wirtz VA 24184

"The Ultimate Corkscrew Book" by Donald A. Bull, **Hardcover Book Weighs 5 Lbs, 744 Color Photographs, 3746 Corkscrews with Values, \$75.00 plus \$8.80 shipping (US Only).** Bullworks, PO Box 596, Wirtz VA 24184

"Bull's Pocket Guide to Corkscrews" by Donald A. Bull, **190 Pages, Over 200 Color Photographs, 942 Corkscrews with Values, \$18.00 plus \$3.95 shipping (US Only).** Bullworks, PO Box 596, Wirtz VA 24184

"Boxes Full of Corkscrews" by Donald A. Bull, **236 Pages, Over 836 Color Photographs, 95% New Information with Values, \$47.95 plus \$7.70 shipping (US Only).** Bullworks, PO Box 596, Wirtz VA 24184

"ANRI Woodcarvings: Bottle Stoppers, Corkscrews, Nutcrackers, Toothpick Holders, Smoking Accessories and More" by Philly Rains and Donald A. Bull, **272 Pages, Over 800 Color Photographs picturing more than 2500 ANRI Carvings with detailed information, \$62.95 plus \$7.70 shipping (US Only).** Bullworks, PO Box 596, Wirtz VA 24184

"Hometown Beer - A History of Kansas City's Breweries" by H James Maxwell & Bob Sullivan Jr, **Hardback w/ 300 Pages, 585 Pictures (352 Color), \$39.95 Postpaid (US).** H. James Maxwell, 1050 West Blue Ridge Blvd, Kansas City MO 64145-1216

"Figural Bottle Openers Identification Guide" by FBOC Club, **148 Pages, 67 Color Pages, with Rarity Guide, \$20.00 plus \$3.85 priority mail shipping (US Only).** Lyle Moreland, 864 Jeanette Ave, Baltimore MD 21222

Newsletter Content and Deadlines for Sending in Articles and Receiving Newsletter

	January Issue	April Issue	July Issue	October Issue
Newsletter Content	New Additions to Handbook	Membership Directory	Convention Highlights	New Discoveries
Articles	December 1st	March 1st	June 1st	September 1st
To Members By	January 31st	April 30th	July 31st	October 31st

JFO AUCTION GUIDELINES

Send Bids To: John Stanley, PO Box 64 Chapel Hill NC 27514

Auction Rules

(Note: No Phone Bidding)

- 1) \$1.00 Minimum Bid on Each Lot, Only 1 Bid per Lot Allowed
- 2) Openers Sold to Highest Bidder (Identical Bids: Earliest Post-marked Bid Wins)

- 3) 7 Days to Return Openers if Not Satisfied, Shipping and Handling Extra
- 4) Openers Shipped Upon Payment (Please Pay within 7 Days of receiving Invoice) (Please make checks payable to: John Stanley)
- 5) Results Shown Next JFO Issue (Winning Bidders receive Results with Invoice)

Grading (G):

1-Poor 2-Fair 4-Good 6-Very Good 8-Excellent 9/10-Near Mint to Mint

(UL-Unlisted in 2005 Handbook (Full Wording Will Be Given)

999-Non USA Beer)

JFO # & Key Words (Brewery or Beer Name from Full Description) from **2005 Handbook of United States Beer Advertising Openers and Corkscrews**

Results of July 2005 JFO Auction Closing August 24, 2005 Thanks to all 34 Bidders

1	A-001-023	Grafs WI	4	6.30	31	B-014-046	Yuengling PA	4	6.50	63	C-006-002	Falls City KY	4	0.77
2	A-004-009	Leisy	6	5.85	32	B-014-085	Gluek MN	4	1.51	64	C-007-001	Utica Club NY	9	3.15
3	A-004-013	Akron OH	6	20.08	33	B-014-106	Cerva MO	8	20.00	65	C-010-012	Koerber OH	4	1.07
4	A-004-015	Leisy IL	6	18.77	34	B-014-999	Coca-Cola	6	4.01	66	C-012-024	Rieker PA	6	8.50
5	A-005-008	Utica Club NY	4	5.85	35	B-015-999	Mt Zircon Spring Water	8	5.96	67	C-013-029	Eldredge NH	8	3.78
6	A-007-013	Mohawk NY	4	11.00	36	B-015-CAN	Dawes Black Horse Ale / Same	6	10.00	68	C-013-061	Jones NH	8	5.00
7	A-007-021	Manhattan WI	6	14.77	37	B-018-036	Gund WI	4	10.50	69	C-013-062	K-B IL	4	1.07
8	A-009-003	Hoster OH	4	40.50	38	B-018-107	Hamms MN	4	5.00	70	C-013-109	Stanton NY	6	8.00
9	A-009-012	Ringler Var B NY	2	10.00	39	B-018-115	Schlitz WI	2	2.01	71	C-013-120	Ziegler WI	6	4.00
10	A-009-013	Washington OH	4	19.01	40	B-018-132	Blatz WI	6	4.15	72	C-013-166	Carling MI	6	2.77
11	A-012-004	Pointer IA	4	1.53	41	B-018-270	Flocks PA	8	15.00	73	C-013-CAN	Labatt's	8	1.73
12	A-015-012	Neuweiler PA	6	30.50	42	B-021-041	Indianapolis IN	6	5.51	74	C-014-030	Wagner OH	6	2.77
13	A-015-019	Fremont Var B NE	6	7.51	43	B-021-134	San Antonio TX	4	20.00	75	C-016-008	Rubsam & Horrmann NY	6	2.04
14	A-017-011	Cream City WI	6	30.50	44	B-021-304	Schreier WI	4	11.01	76	C-016-009	Schaefer NY	8	3.00
15	A-020-034	Peerless WI	6	20.00	45	B-021-342	Fitzgerald NY	6	20.00	77	C-016-010	Schaefer NY	6	2.77
16	A-020-039	Wayne MI	4	6.05	46	B-021-367	Diamond Spring MA	6	20.00	78	C-016-011	Schoenling OH	8	3.00
17	A-021-112	Manhattan WI	8	25.25	47	B-022-052	Tuscora OH	4	15.07	79	C-016-016	Valley Forge PA	8	3.78
18	A-029-999	Orange Crush Bot-	6	4.77	48	B-023-062	Brucks OH	4	3.66	80	C-016-019	Killians	8	0.52
19	A-035-037	Cherokee ???	6	6.45	49	B-024-010	Dutch Club PA	6	7.25	81	C-017-004	Ehrets NY	4	1.07
20	A-035-999	Afri-Kola Co Atlanta	6	9.15	50	B-024-016	Golden Glow CA	6	3.01	82	C-017-006	Gretz PA	6	1.27
21	B-001-005	Pittsburgh Var B PA	6	11.01	51	B-024-026	Narragansett Var B RI	6	1.51	83	C-017-007	Haberle NY	6	2.25
22	B-001-008	Hamms	6	17.01	52	B-024-032	Schmidt MN	4	1.51	84	C-017-008	Hanley RI	6	1.07
23	B-002-004	Feigenspan Var A NJ	8	55.00	53	B-024-033	Schmidt Var A IN	8	12.00	85	C-017-009	Hazelton PA	8	3.15
24	B-002-025	Luxus NE	8	55.00	54	B-024-060	Burgermeister CA	6	1.51	86	C-017-010	Hudepohl OH	6	2.77
25	B-003-001	Doelger Var A NY	6	31.01	55	B-024-072	Wausau WI	6	11.00	87	C-017-011	Iroquois NY	6	9.50
26	B-005-030	Storz NE	6	25.00	56	B-024-102	Yuengling PA	9	20.00	88	C-017-012	Lebanon Valley PA	4	1.07
27	B-013-006	Griesedieck MO	2	1.77	57	B-027-001	Miller Var A WI	4	30.50	89	C-017-020	Pabst WI	6	0.52
28	B-013-999	Hardings Chicago	4	1.77	58	B-030-CAN	The Drewrys LTD Ale Beer-Stout	6	10.77	90	C-017-021	Pabst WI	8	3.87
29	B-014-001	Atlas IL	4	1.77	59	B-042-003	Storz NE	6	12.01	91	C-017-022	Phoenix NY	6	1.07
30	B-014-019	Goetz MO	4	1.77	60	C-002-003	Hutchinson IL	8	35.00	92	C-017-024	Prior PA	8	0.77
					61	C-004-001	Pabst WI	4	3.00	93	C-017-026	Schaefer NY	6	0.52
					62	C-005-002	Pabst WI	4	3.00	94	C-017-028	Schoenling OH	6	2.04

Results of July 2005 JFO Auction Closing August 24, 2005 Thanks to all 34 Bidders

95	C-017-030	Valley Forge PA	6	3.15	125	D-001-011	Blumers WI	6	2.07	160	E-007-010	Prima IL	6	0.77
96	C-017-034	Dawson MA	8	5.87	126	D-002-010	Perfection PA	4	2.07	161	E-007-038	Pilser Malt	4	7.50
97	C-017-036	Home VA	4	1.07	127	D-003-013	Edelweiss IL	6	2.00	162	E-008-040	Red Top OH	6	0.77
98	C-017-051	Phoenix NY	8	3.15	128	D-004-006	Leisy Var A IL	6	3.06	163	E-009-015	Krueger NJ	4	0.77
99	C-017-052	Rochester NY	6	3.15	129	D-004-006	Leisy Var B IL	6	3.06	164	E-009-026	Cumberland MD	6	3.00
100	C-018-003	Fort Schuyler NY	4	20.00	130	D-005-011	Point WI	4	0.77	165	E-009-029	Eastside CA	6	5.00
101	C-018-004	Independent WI	6	1.07	131	D-006-001	Brucks OH	6	1.77	166	E-011-001	Atlas IL	6	0.67
102	C-018-006	Knickerbocker NY	6	2.04	132	D-009-001	Chief Oshkosh WI	6	4.15	167	E-013-008	Hamm MN	6	1.00
103	C-018-007	Metz NE	8	4.87	133	D-009-011	Zoller WI	4	1.77	168	E-013-021	Warsaw IL	6	0.57
104	C-018-008	R & H NY	2	2.04	134	D-012-003	Newman PA	6	1.77	169	E-014-007	Altes CA	8	3.11
105	C-018-009	Rolling Rock PA	6	0.52	135	D-014-001	Anhueser-Busch MO	9	5.11	170	E-014-020	Best IL	6	3.11
106	C-018-010	Simon NY	6	3.15	136	D-017-001	Rolling Rock PA	9	6.77	171	E-014-021	Beverwyck NY	6	1.76
107	C-018-011	Trommers NY	6	3.15	137	E-001-003	Daeufer PA	6	3.00	172	E-014-024	Blackhawk IA	6	6.51
108	C-018-014	Croft MA	6	3.15	138	E-001-017	Bluff City IL	6	8.25	173	E-014-063	Duquesne PA	8	0.77
109	C-019-001	Crema CT	4	0.77	139	E-002-010	Scheidt PA	6	0.77	174	E-014-069	Eastside CA	8	0.87
110	C-019-002	Fort Pitt Var B PA	4	0.77	140	E-003-005	Fisher UT	6	1.77	175	E-014-074	Engesser MN	2	3.11
111	C-019-003	Gretz PA	4	2.02	141	E-003-017	Sioux City IA	2	1.07	176	E-014-081	Falstaff MO	8	5.00
112	C-019-005	Hudepohl OH	6	0.52	142	E-003-021	Standard NY	6	3.00	177	E-014-101	Genesee NY	8	0.52
113	C-019-006	Independent WI	8	1.27	143	E-003-027	Central MO	6	7.00	178	E-014-107	Gluek MN	6	2.00
114	C-019-008	Rolling Rock PA	6	5.02	144	E-003-035	Jung WI	4	0.87	179	E-014-108	Gluek MN	6	2.00
115	C-019-009	Bavarian KY	9	4.87	145	E-003-050	Gipps IL	8	7.00	180	E-014-109	Goetz MO	8	0.52
116	C-020-005	Lebanon Valley PA	6	2.04	146	E-003-068	Birk Bros IL	6	5.15	181	E-014-110	Goetz MO	6	0.52
117	C-020-007	Neuweiler PA	2	0.52	147	E-004-015	Buckeye OH	4	4.89	182	E-014-112	Goetz MO	4	3.11
118	C-020-010	Peter NJ	6	1.07	148	E-004-021	Centlivre IN	6	1.27	183	E-014-113	Golden Glow CA	6	1.07
119	C-020-021	Peter NJ	6	1.07	149	E-004-059	McDermott IL	4	3.26	184	E-014-117	Grain Belt MN	4	1.75
120	C-021-005	R & H NY	6	2.04	150	E-004-069	R & H NY	4	5.38	185	E-014-118	Grain Belt MN	9	3.50
121	C-023-001	Jackson LA	4	10.77	151	E-004-093	Wagner IL	4	0.87	186	E-014-119	Grand Prize TX	4	4.10
122	C-047-001	Budweiser MO	8	10.11	152	E-004-220	Columbia MO	4	5.50	187	E-014-120	Grand Prize TX	6	1.05
123	C-049-002	Budweiser MO	9	3.55	153	E-004-276	Blitz Weinhard OR	4	7.81	188	E-014-124	Great Falls MT	6	0.57
124	D-001-001	A B B A Var A	4	1.27	154	E-005-043	Stag MO	8	7.51	189	E-014-128	Griesedieck MO	8	4.00
					155	E-005-067	Storz NE	8	5.00	190	E-014-138	Hand IL	4	0.52
					156	E-006-051	Sunshine PA	4	0.77	191	E-014-165	King Cole IL	6	6.25
					157	E-006-096	Burger OH	6	3.00	192	E-014-179	Maier CA	9	5.00
					158	E-006-147	Piels NY	6	3.00					
					159	E-007-007	Goetz MO	2	0.52					

Results of July 2005 JFO Auction Closing August 24, 2005 Thanks to all 34 Bidders

286	I-009-002	Fox Deluxe IL	8	3.30	313	M-030-002	Budweiser MO	8	0.87	339	M-066-001	Schlitz WI	8	16.77
287	I-010-002	Red Top OH	4	7.77	314	M-030-003	Storz NE	6	0.87	340	M-083-008	Millstream IA	9	2.00
288	I-021-001	Stegmaier PA	6	0.52	315	M-030-004	Walter WI	8	2.00	341	M-083-009	Millstream IA	9	3.76
289	I-022-001	Arizona	6	1.27	316	M-030-043	Duquesne PA	6	20.00	342	M-083-013	GrainBelt MN	9	2.00
290	I-022-006	Erin Brew OH	4	0.87	317	M-030-048	Pabst PA	6	20.00	343	M-083-014	Pig's Eye	9	10.00
291	I-022-013	Rahr WI	4	0.87	318	M-030-075	Genesee NY	6	20.00	344	M-083-019	Budwesier	4	20.00
292	I-022-015	Schlitz WI	6	0.52	319	M-030-113	Genesee NY	6	20.00	345	M-083-027	Miller PA	9	20.00
293	I-024-001	Fox Deluxe IL	4	20.00	320	M-030-121	Grain Belt MN	6	20.00	346	M-085-001	A-B MO	6	22.65
294	I-026-001	Hampden MA	2	2.00	321	M-030-UL	FALSTAFF (IN SHIELD) FALSTAFF BEER DISTRIBUTING CO. P. O. BOX 338 BOERNE, TEXAS PHONE #249-2212	6	20.00	347	N-002-001	Dixie LA	4	2.02
295	I-030-005	Leinenkugel WI	9	4.27	322	M-030-UL	STROH'S LEROY E. DUKE DISTRIBUTOR 127-135 BEAVER ST. LANCASTER, PA. PH. 393-2216	6	20.00	348	N-003-001	Schmidt PA	9	1.00
296	J-007-002	Coors CO	6	6.77	323	M-033-001	Drewrys IN	6	0.52	349	N-003-005	GrainBelt MN	8	4.01
297	J-010-001	Pabst WI	6	5.00	324	M-033-002	Jax LA	4	1.07	350	N-004-003	Congress NY	4	31.00
298	K-003-001	Rheingold NY	6	5.00	325	M-033-004	Busch Bavarian MO	6	10.00	351	N-009-001	Camden NJ	8	7.00
299	M-001-002	Haffenreffer MA	4	3.26	326	M-033-006	Fort Pitt PA	2	3.66	352	N-009-008	Vienna OH	4	3.66
300	M-001-005	Harvard Var B MA	4	0.87	327	M-033-007	Oertel KY	6	0.52	353	N-009-009	Berlin WI	6	13.78
301	M-003-005	Edelweiss Var B IL	6	10.35	328	M-033-999	Spaz Beer & Soda Phone	6	1.87	354	N-009-010	Esslinger PA	6	3.66
302	M-003-008	Erie PA	6	31.01	329	M-034-002	Falls City KY	4	0.57	355	N-009-999	Drink Blackhawk Bev	6	1.87
303	M-003-009	Brackenridge PA	4	36.01	330	M-036-001	Phoenix NY	6	3.66	356	N-011-002	Stoneys PA	6	11.77
304	M-003-999	Chicago 1933	6	7.01	331	M-038-001	Schlitz WI	8	3.00	357	N-012-001	Becks (Missing)	2	3.77
305	M-003-999	Chicago 1934	6	8.01	332	M-038-006	Schlitz WI	6	0.52	358	N-018-002	Budweiser MO	8	9.11
306	M-003-999	Theo DeWitt Hotels Green	6	10.00	333	M-039-009	Stag MO	2	0.52	359	N-020-005	Birk Bros IL	4	30.11
307	M-010-001	Ballantine NJ	6	5.50	334	M-039-010	Leinenkugel WI	4	0.52	360	N-023-008	Strohs MI	8	15.65
308	M-019-022	Schlitz WI	8	2.96	335	M-053-001	Schlitz WI	8	5.01	361	N-025-003	Carling MI	8	4.00
309	M-023-001	Coors	6	0.52	336	M-054-003	Geyer Bros MI	8	4.01	362	N-026-001	Richbrau VA	6	26.55
310	M-023-011	Storz NE	6	0.52	337	M-054-004	Strohs MI	9	3.00	363	N-030-012	Blitz Weinhard OR	8	10.00
311	M-029-007	Sterling IN	6	0.52	338	M-054-015	Leinenkugel WI	9	4.01	364	N-040-004	Coors Var B	6	1.00
312	M-029-065	Schlitz Neuweiler PA	6	3.66						365	N-056-001	Miller WI	8	5.00
										366	N-065-001	Michelob MO	9	5.00
										367	N-077-001	Oshkosh WI	6	20.55
										368	N-093-001	Hamms MN	9	25.65
										369	N-098-003	Old Milwaukee WI	9	10.00
										370	N-107-001	Stoneys PA	9	26.65
										371	O-016-002	Stegmaier PA	8	20.00
										372	P-010-063	Betz PA	2	30.00
										373	R-011-001	Harvard MA Min \$100	6	0.00
										374	Z-999-ZZZ (< 1.00)	Bid for Lots w/ No Bids		0.52

JFO Auction Closing November 23, 2005: Name & #:

1	A-001-014	Maltop NY	8	29	B-014-CAN	Calgary Brewing & Malting	6	64	B-023-086	Edelweiss IL	6
2	A-001-037	Golden Ribbon CA	6	30	B-015-011	Brown Label CA	4	65	B-023-086	Edelweiss IL	6
3	A-005-010	Four Roses OH	4	31	B-017-001	Buffalo CA	6	66	B-024-001	Acme CA	6
4	A-007-021	Manhattan WI	6	32	B-018-017	Cooks IN	6	67	B-024-005	Burgermeister CA	4
5	A-009-004	Lesiy OH	6	33	B-018-021	Dicks IL	4	68	B-024-010	Dutch Club PA	4
6	A-012-001	Burgermeister	4	34	B-018-022	Dubuque IA	4	69	B-024-016	Golden Glow CA	6
7	A-020-039	Wayne MI	9	35	B-018-055	Olympia / 7697 WA	6	70	B-024-043	Hamms MN	6
8	A-023-001	Blackhawk Var A IA	9	36	B-018-140	Leisy IL	4	71	B-024-044	Heileman WI	6
9	A-029-032	Butte Bottlers MT	6	37	B-018-146	Schiller Bros MO	4	72	B-024-055	Pointer IA	6
10	A-029-040	Reine CA	6	38	B-018-152	Aurora IL	6	73	B-024-063	Dicks IL	4
11	A-029-052	Independent WI	8	39	B-018-376	R I B IL	4	74	B-024-093	Edelweiss IL	6
12	A-030-004	Schotts IL	6	40	B-018-393	Hand IL	2	75	B-026-005	Spokane WA	4
13	A-035-004	Buffalo Var A CA	4	41	B-019-007	Dicks P IL	8	76	B-030-002	Capitol MO	6
14	B-005-030	Storz NE	6	42	B-019-017	Hamms MN	4	77	B-035-004	Storz NE	6
15	B-006-004	Columbia MO	4	43	B-019-038	Wieland CA	6	78	B-036-005	Atlas WI	4
16	B-008-007	Malt 55 (Add / Same)	6	44	B-019-060	Standard IL	4	79	B-038-014	Canadian Cream	4
17	B-013-008	Heileman WI	4	45	B-019-062	Dicks Q IL	8	80	C-009-003	Blatz WI	4
18	B-013-016	Ambrosia IL	8	46	B-019-121	Fitgers MN	2	81	C-009-006	Edelweiss IL	6
19	B-013-058	Tip-Top PA	6	47	B-019-167	Highland IL	4	82	C-009-014	Edelweiss IL	4
20	B-013-113	Blue Ribbon PA	2	48	B-021-010	Coors CO	2	83	C-009-020	Buck IL	6
21	B-014-001	Atlas IL	4	49	B-021-013	Enterprise CA	4	84	C-009-023	Graf WI	6
22	B-014-013	Feckers IL	6	50	B-021-066	Tivoli MI	4	85	C-009-026	Schmidt MN	4
23	B-014-014	Frankenmuth MI	4	51	B-021-068	Radeke IL	4	86	C-010-002	American NY	9
24	B-014-015	Franklin OH	6	52	B-021-076	Schlitz WI	6	87	C-010-018	Piels NY	6
25	B-014-025	Grand Prize TX	8	53	B-021-211	Standard IL	4	88	C-010-020	Rochester NY	8
26	B-014-051	Graf WI	8	54	B-021-248	Gipps	6	89	C-010-024	A B C CA	6
27	B-014-118	Sand Springs MA	9	55	B-021-556	Edelweiss IL	6	90	C-011-009	Independent WI	8
28	B-014-999	Improved Crown Seal	4	56	B-022-010	Jung WI	9	91	C-011-016	General CA	8
				57	B-023-008	Ehrets NY	6	92	C-011-017	General CA	8
				58	B-023-012	Hardings IL	6	93	C-011-029	Graf WI	6
				59	B-023-018	Miller WI	6	94	C-011-999	Bon Ton Beverages	4
				60	B-023-020	Miller WI	8	95	C-012-004	Crema CT	6
				61	B-023-023	Oshkosh WI	2	96	C-012-018	National MD	8
				62	B-023-027	Schreiber NY	2	97	C-012-063	Simon Pure NY	6
				63	B-023-047	Ruff-Riedel IL	6				

JFO Auction Closing November 23, 2005: Name & #:

195	E-014-001	A B C (Copper) CA	8	228	E-014-324	Bluff City IL	6	262	G-003-003	Hamms MN	6
196	E-014-026	Blatz WI	9	229	E-014-333	Budweiser MO	9	263	G-003-005	Engelking IL	4
197	E-014-033	Bub MN	9	230	E-014-347	Diehl OH	6	264	G-003-007	Langs NY	6
198	E-014-040	Butte (Copper) MT	8	231	E-014-351	Drewrys IN	6	265	G-003-017	Graf WI	4
199	E-014-047	Cooks IN	9	232	E-014-359	Fisher UT	8	266	G-004-002	Blatz WI	6
200	E-014-060	Dubois PA	8	233	E-014-377	Hamms MN	8	267	G-004-003	Fredericks IL	6
201	E-014-063	Duquesne PA	9	234	E-014-391	Kiewels MN	6	268	G-004-006	Lithia WI	6
202	E-014-080	F & S PA	9	235	E-014-402	Mankato MN	9	269	G-004-009	E M S WI	4
203	E-014-101	Genesee NY	9	236	E-014-422	Potosi WI	6	270	G-004-014	Tavern Pale IL	6
204	E-014-125	Great Falls	6	237	E-014-508	Hauenstein MN	9	271	G-005-999	Coca-Cola GA	4
205	E-014-127	Griesedieck MO	6	238	E-014-515	Kamms IN	6	272	G-006-001	Bartels PA	6
206	E-014-133	Hamms MN	9	239	E-014-576	Ziegler WI	6	273	G-006-003	Flecks MN	6
207	E-014-145	Hensler NJ	6	240	E-014-579	American MD	6	274	G-006-005	Fort Pitt PA	8
208	E-014-155	Hudepohl OH	6	241	E-014-636	Schmidt MN	6	275	G-006-006	Gluek MN	8
209	E-014-166	Kingsbury WI	9	242	E-014-713	Pilsener OH	6	276	G-006-007	Gretz PA	4
210	E-014-174	Leinenkugels WI	6	243	E-014-726	Pickwick MA	6	277	G-006-008	Gunther MD	6
211	E-014-181	Mankato MN	8	244	E-014-738	Trommers Var A NY	9	278	G-006-013	Sunshine PA	6
212	E-014-185	Metz (Copper) NE	8	245	E-014-793	Highlander MT	8	279	G-006-014	Walters WI	8
213	E-014-187	Miller WI	9	246	E-014-821	Pfeiffer MN	9	280	G-006-017	National MD	6
214	E-014-193	Muehlebach MO	9	247	E-014-822	Schmidt MN	8	281	G-006-019	Pickwick MA	6
215	E-014-200	Oldbru MI	4	248	E-015-002	Hand IL	6	282	G-006-023	National MD	6
216	E-014-222	Piels NY	9	249	G-001-008	Eblings NY	8	283	G-007-003	Fort Pitt PA	4
217	E-014-227	R & H NY	4	250	G-001-018	Old Reading PA	4	284	G-007-005	Gunther MD	6
218	E-014-241	Rhineland WI	8	251	G-001-024	Schaefer B NY	6	285	G-007-006	Harvard MA	6
219	E-014-246	Ruppert NY	8	252	G-001-040	Robin Hood NE	4	286	G-007-007	Holihans MA	2
220	E-014-251	San Antonio TX	4	253	G-001-044	Keeley IL	6	287	G-007-009	Pickwick MA	6
221	E-014-256	Schlitz WI	9	254	G-001- CAN	Black Horse Ale	6	288	G-007-010	Schmidts MN	6
222	E-014-259	Schlitz WI	9	255	G-002-001	Boston MA	4	289	G-007-011	Sunshine PA	8
223	E-014-264	Schmidts PA	9	256	G-002-003	Hampden MA	6	290	G-032-001	Lite WI	6
224	E-014-268	Shiner TX	9	257	G-002-004	Hampden MA	6	291	G-041-001	Rolling Rock (Grey) PA	9
225	E-014-276	Stegmaier PA	8	258	G-002-005	Harvard MA	8	292	G-041-001	Rolling Rock (Painted) PA	9
226	E-014-293	Wagner IL	6	259	G-002-006	Pennsylvania PA	8	293	H-004-001	Prima IL	6
227	E-014-305	Wooden Shoe OH	6	260	G-002-008	Hacker MA	8	294	I-007-013	Esslingers PA C/K	6
				261	G-002-009	Hudepohl OH	8				

JFO Auction Closing November 23, 2005: Name & #:

295	I-007-015	Fort Pitt PA C/K	6		322	M-013-001	Ballantine (Left) NJ	6		354	O-002-003	Flecks MN	8	
296	I-007-021	Meister Brau IL C/K	8		323	M-015-001	Miller WI	6		355	O-003-001	Valley Forge (MIB) PA	9	
297	I-007-024	Krueger NJ C/K	8		324	M-016-001	Budweiser MO	9		356	P-001-013	Leopold IL	4	
298	I-007-026	Miller WI C/K	6		325	M-017-001	Budweiser MO	6		357	P-006-001	F & S PA	8	
299	I-007-032	Pabst WI C/K	8		326	M-018-001	Budweiser MO	6		358	P-007-006	Stegmaier PA	6	
300	I-007-032	Pabst WI Q/E	6		327	M-019-022	Schlitz WI	8		359	P-008-145	American MO	8	
301	I-007-033	Pabst WI C/K	4		328	M-021-001	Rainier WA	4		360	P-014-013	Griesedieck MO	4	
302	I-007-036	Ruppert NY A C/K	4		329	M-023-002	Stag MO	6		361	P-015-004	Grain Belt MN	6	
303	I-007-038	Schmidt MN C/K	6		330	M-024-001	Coors CO	9		362	P-019-002	Townsend MT	6	
304	I-007-079	Frederick Bros	4		331	M-025-001	Lemp MO	6		363	P-020-003	Blatz WI	4	
305	I-009-001	Waldorf OH	6		332	M-029-007	Sterling IN	6		364	P-021-003	Griesedieck MO	9	
306	I-009-002	Fox Deluxe IL	4		333	M-030-032	Falstaff NE	6		365	P-036-002	Metz NE	4	
307	J-007-002	Coors CO	6		334	M-031-001	Sterling IN	6		366	P-043-005	Strohs MI	4	
308	J-009-001	Coors CO	8		335	M-032-002	Pabst (w/ Box) WI	8		367	P-054-012	Montreal KY	8	
309	J-010-001	Pabst WI	4		336	M-033-002	Jax LA	6		368	P-066-010	Blatz Var A	4	
310	K-004-001	Pabst (Var B) Min \$75	6		337	M-034-006	Lite WI	9		369	P-128-001	Hemrich (Missing Corkscrew) WA	4	
311	L-004-068	Southern Select TX	8		338	M-036-005	Schreiber NY	6		370	P-154-001	Titletown WI	9	
312	L-016-003	Miller WI	9		339	M-039-001	International NY	8		371	Q-003-001	Olympia WA	6	
313	L-016-004	Millstream IA	9		340	M-040-001	Oshkosh WI	9		372	R-012-001	Schlitz WI	4	
314	M-001-006	Hudepohl OH	6		341	M-043-004	Lite WI	9		373	R-019-005	Iron City PA	8	
315	M-002-004	Harvard MA	6		342	M-044-001	Storz NE	8		374	Z-999-ZZZ	Bid for Lots Receiving No Bids (< 1.00) (Excludes Min Lots)		
316	M-004-002	Blatz WI	6		343	M-045-001	Graf WI	6						
317	M-005-001	Tivoli CO	6		344	M-047-001	Arnholt (Hole in Handle) PA	2						
318	M-009-001	Ballantine NJ	9		345	M-051-007	Rheingold NY	2						
319	M-010-002	Ballantine NJ	4		346	M-054-001	Strohs MI	9						
320	M-011-001	Ballantine NJ	8		347	M-054-008	Goetz MO	9						
321	M-012-001	Ballantine NJ	6		348	M-060-008	Stag MO	4						
					349	M-064-001	Stag MO	6						
					350	M-066-001	Schlitz WI	6						
					351	M-076-001	Schlitz (MIB) WI	9						
					352	M-127-001	Saranac NY	9						
					353	M-145-001	New Belgium CO	9						



Nice N-9 Coca-Cola opener and resealer from Livingston, Montana bought by Dick Friedman this past quarter (for \$133.50). It was in excellent condition.