

# Just For Openers APR 2007 Issue #114

Copyright 2007  
John Stanley  
PO Box 64 Chapel Hill NC 27514-0064  
(919) 419-1546  
Web Site  
www.just-for-openers.org

Past Editors:  
Don Bull (1979-83)  
Ed Kaye (1984-88)  
Art Santen (1989-1993)

Annual Dues \$20.00  
Use PayPal at  
jfo@mindspring.com  
Renewal Due Date: 6/30/07

Opener & Corkscrew Books  
(details in Selling Ads)

2007 Handbook of United  
States Beer Advertising  
Openers & Corkscrews by  
Bull, Kaye & Stanley

"Just For Openers" "A  
Guide to Beer, Soda, &  
Other Openers" by Donald  
A. Bull & John R. Stanley

"Soda Advertising Open-  
ers" by Donald A. Bull &  
John R. Stanley

"Beer Advertising: Knives,  
Letter Openers, Ice Picks,  
Cigar Cutters and More" by  
Donald A. Bull

"The Ultimate Corkscrew  
Book" by Donald A. Bull

"Bull's Pocket Guide to  
Corkscrews" by Donald A.  
Bull

"Boxes Full of Corkscrews"  
by Donald A. Bull

"ANRI Woodcarvings: Bot-  
tle Stoppers, Corkscrews,  
Nutcrackers, Toothpick  
Holders, Smoking Accessor-  
ies and More" by Philly  
Rains and Donald A. Bull

Inventory of Canadian Beer  
Advertising Openers &  
Corkscrews by George Vine

**J  
F  
O**



## B-13-4 Fink Brewing "Twins"

The above picture shows twin B-13-4 Fink "Nifty" openers/corkscrews? If you look closely, the top opener besides not having the shooting star design is the rarely seen mark on a B-13 of "C. T. & O. Co. Pat. Pend.". The bottom piece is the much more common mark of "Vaughan Chicago Pat'd.". The B-13 "Nifty" was patented Dec. 5, 1916. One can assume it was sometime in 1915 when the "Crown, Throat & Opener Co." switched its name to "Vaughan Chicago". One of the great mysteries for our hobby is a good history of the Vaughan company that produced by far the most openers in number and variety of any company in the world. Can anyone help????

## 2007 JFO Convention #29 April 25-29 Harrisburg PA

Less than two weeks before the 29th JFO Convention begins. As of April 7th we have 43 members attending. This will be our largest turn out since Chicago set the record of 47 in 2000. It's still not too late as the hotel has space so call 1-717-774-2721 (the hotel) or 1-888-HOLIDAY.

Please remember to bring a display so fellow members can see what your collecting interests are. Check the bottom of the show schedule page for details. As always bring any openers of any kind, corkscrews of any kind and any breweriana or advertising especially if it from Pennsylvania. Even if you decide at the last minute, just come to Harrisburg. As Ollie Hibbeler always says, **BE THERE!** This will be one you don't want to miss. The Stanley's look forward to seeing everyone in two weeks.

## 2007 JFO Convention Schedule Harrisburg PA

**Tuesday April 24th — Early Arrivals**

**Wednesday April 25th — Arrivals, Room-To-Room Trading**

**Thursday April 26th — Most Arrivals, Room-To-Room Trading**

**Friday April 27th — Rennigars Kutztown (on your own)**

**8PM Seminar by Mark Woodard on  
William Painter (Inventor of the Bottle Opener)**

**Short Auction to Follow Seminar**

**Saturday April 28th — Public Show 8AM to 1PM**

**If agreeable a Group Dinner that Evening**

**Sunday April 29th — Convention Over, be in St Louis for 2008**

# Spouse's Corner

By Pat Stanley, the Editor's Spouse

In just a few minutes it will be April 2007 and I can say "See You This Month at JFO". Last count I heard we have 40 members coming. I've asked John for the list several times, but I don't see it in my email box yet, but don't think I'll wake him up to get it!

As I said in January, my column has become almost completely unrelated to openers, but hopefully at least those members who have been to JFO will find my ramblings somewhat interesting.

Jazzy and Snazzy now have car seats for their trip to Harrisburg. This week I took them to the groomers and almost forgot I had them with me. They just quietly look out the window. I'm smart enough to know that their behavior is temporary due to the newness of travel, but I hope it lasts at least through the JFO trip. I took them to the center of the campus of UNC last week-end to socialize them more in strange places, but I certainly have not done enough. They definitely won't be bored at our fun convention!

We want to make sure that the "girls" meet Harold Queen so they don't hide from him. At the last convention we couldn't find Corkie after Harold had been in our room to check email. We found her in the tub, hiding behind the shower curtain!!

We do ask that no one feeds Jazzy or Snazzy any human food. Not only is it nice to have dogs that don't beg when you are eating, they both have restrictive diets, even their dog treats are limited to certain ingredients.

John had to completely change around his opener room. It's like this. Every year when we had to scrub mini blinds in the tub, he would tell me how much he wanted to get rid of them and that he liked plantation shutters. I thought we needed other things more until I saw my friend's new shutters. John never said anything when the people came to measure for our new window dressings or when I went and committed dollars equal to lots of openers. Then near installation time, he said he didn't ever say he wanted them.

Great, just great. Too late to cancel a custom order and I got them on sale, so it was the perfect time to get them. Now I didn't really expect them to be outstanding except in my home office that I painted when John went to Brimfield in September to help Art Johnson. All the other rooms still are crying for paint and I thought the shutters would look pretty washed out by the yukky walls. Boy was I surprised at how beautiful they are.

I know...you thought this was about John's opener room. It is, just be patient. One little problem with these shutters is that three piece of furniture no longer could be in front of a window... furniture that had storage space in them, a real necessity in a collector's home. One piece could be moved and the other two are no longer in the house!

One piece that had to be given up was in my office, something John put together in my office over a decade ago. Took a day to figure out how to disassemble which was necessary since it would not fit through the door. Another piece was in John's computer area...yes, he has two areas of our small house that are his space.

The third was in the opener room and could stay with us if everything was changed around. Now even though I have no strength, John pulls me into "his" projects and this particular week-end I just had to finish taxes or I would go completely crazy. Early that Saturday he started out with a command to write down that two windows had not been caulked by the plantation shutter installers. Since John can write I had to remind him that if he wanted his refund, I needed to focus on taxes...not what I wanted to do, but something that just had to be suffered through. Yes, I'm a CPA but week-ends should be free from such details especially since I hate doing taxes.

John suffered, carrying around heavy metal tool chests full of openers (the collection that supposedly has not grown in years because there's just not much left out there???). It's funny, whenever I had am assigned to mail box duty

## Spouse's Corner (continued)

because John is off to some show where there are openers still out there, I always have to remember to take a sturdy bag to carry home the loot for that week.

John is a very focused person and successfully completed the task while I completed the taxes!! Now for some, totally moving things around would be troublesome as they wouldn't be able to find things. John would have that problem, except in this case...after all we are talking about openers, not where the salt and pepper are.

John just sent me the list of attendees. There are some new names on the list. I've always heard "Make New Friends, but Keep the Old". In JFO we make so many friends. Since I'm a born Canadian and we all enjoyed meeting Mike and Theresa St. Amand from Canada last year, I'm so glad to see that they are joining us again. Marc and Pat Benjamin are coming after missing several years since our dates conflicted with their world travels. The Bulls are coming for a short visit with us which will be welcomed by all. We haven't seen Dick Britton for some time and will be glad to see him back again. John roomed with the new Gary Deachman at Blue Gray. Gary has changed his choice of beverage for his health. Sandra Emme is coming and hopes we will play "what is it" in the hospitality room. After all the medical problems Bill Hanold has faced, how great to see that he and Karen will be in Harrisburg. Ollie Hibbeler is coming, but Shirley isn't because of another trip they are taking for a wedding. She will wish she had been here!! Art Johnson is bringing a wonderful new friend, Beth Peck. We've had the fun of having them visit a couple of times and are so glad they are joining us. We haven't seen Hale Milano since he was a little kid and look forward to seeing him come with his dad, Todd. Darvin Stilwell is attending his 3<sup>rd</sup> JFO Convention, another member who quickly bonded with this close knit group. Our faces are always happier when Harriet Waldo shows up in her coveralls and happy face memorabilia. And our dear friends Joe and Jackie Young will be coming with Munchkin. We are very sad to tell you that Bailey had a short, but happy life. Munchkin is looking forward to meeting Jazzy and Snazzy.

Ok, so you want to know who else is coming. Bill and Barb Arber, Kurt and Debbie Bachmann, Mark Barren, John Burruss (JEB), Herb and Camille Danziger, John Donoghue, Tom and Phyllis Gormally, Fil Graff, John and Anna Hall, Mike Krejci, Josef and Sue L'Africain, Larry Moter, Alex and Peggy Redl, Art Santen, Robert and Janet Sommer, Bob and Marge Stahly, Pat and Stan Summers and 8 new first time attendees. Look for the new names and make them feel welcomed.



Right about now Bob Post is wondering why I haven't mentioned him and his wife Sara. See I was afraid that you might think this group is totally crazy, but really only a few are. Bob claims that this was taken in celebration of the 40<sup>th</sup> anniversary of the song and their marriage.

**Spouse's  
Corner  
(continued)**

I know I haven't listed Norm and Judy Jay. Seems like a trip with his son was a higher priority this year. So no tricks on Norm at the auction.

And I haven't named the members helping with this convention. Host and Hostess Ben and Cornelia Hoffman. David Hoffman (unrelated) will help along with Harold and Boots Queen.

Now if Jack Ford was just going to be here. Maybe he will surprise us!! It would be nice if he would bring John and Cheryll Cartwright and Pete and Angie Norwicki along too.

Hope I haven't missed anyone.

It is now April 1<sup>st</sup> and you might be considered a fool for not coming to JFO!!

See you in a few weeks. Pat, Jazzy and Snazzy

**Special Presentation**

*The Inventive Genius of William Painter:  
Much More Than Bottle Caps and Openers*

**Friday, April 27, 8:00 PM**



JFO member Mark Woodard will talk about the life and career of a true American genius - William Painter.

Mark lives near Baltimore and has spent the last 18 months researching William Painter and the early years of the Crown Cork & Seal Company.

His research has uncovered a wealth of new information about one of the most brilliant American inventors.

This will be a very informative presentation and Mark will uncover some items that have been hidden for well over a century!

Do you know:

- Before William Painter revolutionized the bottling industry, he was a world class inventor of pumps and valves?
- It is often stated that Painter was awarded 85 patents. In fact, he had 86. Learn about his newly discovered patent.
- The connection between William Painter and King Gillette, inventor of the disposable razor?
- The connection between William Painter and Edgar Allan Poe?

At the conclusion of the presentation, we will raise a toast to William Painter. **Be sure to bring your favorite cold beverage and opener!**

**Newsletter Content and Deadlines for Sending in Articles and Receiving Newsletter**

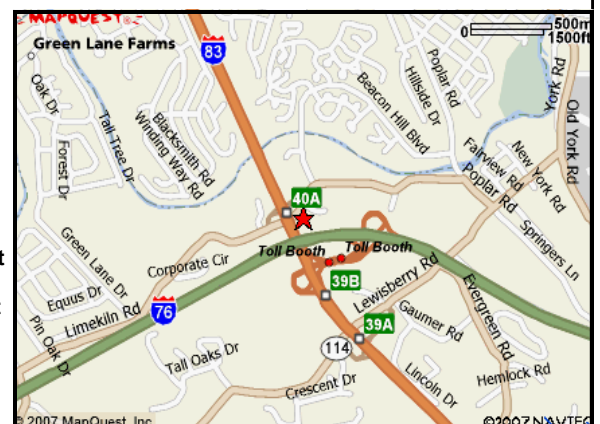
	January Issue	April Issue	July Issue	October Issue
<b>Newsletter Content</b>	New Additions to Handbook	Membership Directory	Convention Highlights	New Discoveries
<b>Articles</b>	December 1st	March 1st	June 1st	September 1st
<b>To Members By</b>	January 31st	April 30th	July 31st	October 31st

**“29th Just For Openers Convention Want List” (Hotel Map Bottom)**

A-004-026,Elk Run,David Hoffman  
 A-004-054,Continental,David Hoffman  
 A-009-002,F&S,David Hoffman  
 A-010-001,Muehlebach,Thomas Balanda  
 A-013-022,Virginia,John Stanley  
 A-026-002,Zetts,Mark Barren  
 A-026-999,#2 Zetts or #5 Lexington,Gary Deachman  
 A-028-059,Indee,Mark Barren  
 A-032-003,Wooden Shoe,Darvin Stilwell  
 A-034-002,7th St Malt,Thomas Balanda  
 A-035-038,Ashland,David Hoffman  
 A-079-001,Bud,Art Santen  
 A-999-999,A1 to A5, A13, A-25 to A-29, A-52,Thomas Balanda  
 A-999-999,Midwest Beer,Bob Post  
 B-001-015,Kauffman,Bill Arber  
 B-001-017,Furniture City,Bill Arber  
 B-001-021,F&S,David Hoffman  
 B-001-033,Fink,David Hoffman  
 B-002-021,Fresno,Bill Arber  
 B-002-022,Haenle,Bill Arber  
 B-002-029,Gold Nugget,Bill Arber  
 B-002-037,Flecks,Bill Arber  
 B-002-039,R I B Cross Country,Bill Arber  
 B-002-040,Anheuser,Bill Arber  
 B-003-003,Reno,Bill Arber  
 B-003-005,Rainier,Bill Arber  
 B-009-002,Salinas,John Stanley  
 B-013-112,Watertown,Mark Barren  
 B-021-180,Mohawk Valley,Mark Barren  
 B-021-379,Lykens,David Hoffman  
 B-021-619,Kuhlmann,Mark Barren  
 B-021-999,U S Beer,Thomas Balanda  
 B-022-079,Schwarzenbach,John Hall  
 B-028-001,Howell & King,John Stanley  
 B-060-003,Stark-Tuscarawas,Thomas Balanda  
 B-999-999,Midwest Beer,Bob Post  
 C-001-010,Eichler,Mark Barren  
 C-002-001,Phoenix,Thomas Balanda  
 C-017-025,Rochester,Ben Hoffman  
 C-017-032,Wayne,Ben Hoffman  
 C-017-046,Keeley,Ben Hoffman  
 C-017-047,Keeley,Ben Hoffman  
 C-017-050,Moose,Ben Hoffman  
 C-017-060,Home,Ben Hoffman  
 C-017-064,Rubsam & Hormann,Ben Hoffman  
 C-017-069,Citizens,Ben Hoffman  
 C-018-022,Croft,Ben Hoffman  
 C-018-024,Stanton,Ben Hoffman  
 C-018-999,US Beer,Keith Brown  
 C-019-999,US Beer,Darvin Stilwell  
 C-021-006,Grand Rapids,John Stanley  
 C-021-999,US Beer,Keith Brown  
 C-023-001,Jackson,Thomas Balanda  
 C-039-001,Seitz,Mark Woodard  
 C-039-002,Haas,Mark Woodard  
 C-040-001,Lucky Lager,Gary Deachman  
 C-066-001,Atlantic ,Art Santen  
 C-070-001,Bud,Art Santen  
 C-999-999,Midwest Beer,Bob Post  
 D-011-001,Hagerstown,Thomas Balanda  
 D-012-999,US Beer & Soda,Mark Woodard  
 D-016-001,New Kentucky,John Stanley  
 D-024-001,Brucks,Mark Woodard  
 E-001-028,Stegmaier,John Hall  
 E-002-021,Park,Larry Moter

E-003-030,Derby,Larry Moter  
 E-003-067,Stegmaier,John Hall  
 E-004-148,Stegmaier,John Hall  
 E-004-207,Yosemite,Larry Moter  
 E-004-215,Broadway,Tom Gormally  
 E-004-244,Sequoia,Larry Moter  
 E-004-245,Trainer,Larry Moter  
 E-004-300,Trainer,Larry Moter  
 E-004-313,Hittleman,Mark Barren  
 E-004-345,Koch,Mark Barren  
 E-004-999,Any US Beer,Harriet Waldo  
 E-006-195,Oil City,Tom Gormally  
 E-006-213,Kips Bay,Tom Gormally  
 E-007-068,Stegmaier,John Hall  
 E-007-077,Lima,Larry Moter  
 E-008-007,Stegmaier,John Hall  
 E-008-020,Indee,Mark Barren  
 E-008-056,Langs,Mark Barren  
 E-008-086,Stegmaier,John Hall  
 E-011-999,US Beer,Keith Brown  
 E-014-148,Hofbrau,Tom Gormally  
 E-014-275,Stegmaier,John Hall  
 E-014-626,Modesto,Tom Gormally  
 E-014-670,Yoerg,Tom Gormally  
 E-014-729,Saltzman,Tom Gormally  
 E-014-736,German Uniontown,Tom Gormally  
 E-014-761,Bowler Bros,Tom Gormally  
 E-014-772,Connecticut,Tom Gormally  
 E-014-832,Uneeda,Larry Moter  
 E-014-844,Tivoli,Herb Danziger  
 E-016-011,Ganser,Larry Moter  
 E-017-007,I S D,Larry Moter  
 E-017-009,Everett,Larry Moter  
 E-022-003,Stegmaier,John Hall  
 E-022-999,US Beer & Soda,Mark Woodard  
 F-030-001,Wiedemann,John Stanley  
 G-009-999,US Beer,Darvin Stilwell  
 G-085-001,Bud,Art Santen  
 H-004-003,West Virginia,Darvin Stilwell  
 H-005-020,Cerveza,David Hoffman  
 H-005-999,US Beer,Keith Brown  
 H-008-999,US Beer,Bob Post  
 H-008-999,US Beer,Keith Brown  
 H-012-001,Salem,Gary Deachman  
 H-012-001,Salem,John Stanley  
 H-999-999,Any US Beer,Harriet Waldo  
 J-005-060,Lyons,David Hoffman  
 J-005-091,Schlitz,David Hoffman  
 J-008-999,US Beer,Keith Brown  
 K-005-010,Lone Star,Richard Poeth  
 K-010-999,Pabst or Schlitz,Richard Poeth  
 L-001-999,US Beer,Darvin Stilwell  
 L-013-001,Iroquois,Gary Deachman  
 M-001-007,Chremal,Gary Deachman  
 M-002-005,Bartholomay,Gary Deachman  
 M-002-022,Rising Sun,Gary Deachman  
 M-003-005,Edelweiss (Colors),Art Johnson  
 M-003-040,Deer Park (Colors),Art Johnson  
 M-003-042,Seitz,Art Johnson  
 M-003-999,U S Beer,Thomas Balanda

M-003-999,US Beer,Bob Post  
 M-003-999,US Beer,Darvin Stilwell  
 M-003-999,Victory Coat,Art Johnson  
 M-012-001,Ballantine,Darvin Stilwell  
 M-019-999,US Beer,Darvin Stilwell  
 M-052-001,Kansas City,Mark Woodard  
 M-068-001,Pfaff,Mark Woodard  
 M-073-999,Atlantic City,Art Johnson  
 M-103-001,High Life,Mark Woodard  
 M-999-999,Long Case M-73 Electro-Chemical,Art Johnson  
 N-076-001,Budweiser,Gary Deachman  
 N-078-999,#1 Gold Top or #2 Bartels,Gary Deachman  
 N-113-001,Budweiser,Gary Deachman  
 N-145-001,Bud,Art Santen  
 O-001-002,Leidegers,John Stanley  
 O-001-006,Walters,John Stanley  
 O-511-999,Soda,Mark Woodard  
 P-065-999,#1 Hamms or #2 Angeles,Gary Deachman  
 P-179-001,Bear Republic,Art Santen  
 Q-089-001,Bud,Art Santen  
 Q-092-001,Miller,Art Santen  
 R-002-999,US Beer,Darvin Stilwell  
 R-003-999,US Beer,Darvin Stilwell  
 R-008-001,Kaiers,John Stanley  
 R-010-001,Sunshine Beer,Sandra Emme  
 R-055-001,Primo,Art Santen  
 R-058-001,Shark,Art Santen  
 Z-999-999,Anything That Catches My Eye,Mike St Amand  
 Z-999-999,Blue Ross Pig Corkscrew,Don Bull  
 Z-999-999,Carved Horn Corkscrews,Josef L'Africain  
 Z-999-999,Corkscrews,Herb Danziger  
 Z-999-999,Corkscrews,John Donohue  
 Z-999-999,Corkscrews,Josef L'Africain  
 Z-999-999,Corkscrews (All),Mark Woodard  
 Z-999-999,Giant Walker Corkscrew,Josef L'Africain  
 Z-999-999,Moxie Folding Opener/Corkscrew,Josef L'Africain  
 Z-999-999,Pennsylvania,Thomas Balanda  
 Z-999-999,Roundlet Corkscrews,Josef L'Africain  
 Z-999-999,Syroco Corkscrews,Josef L'Africain  
 Z-999-999,Syroco Openers,Josef L'Africain  
 Z-999-999,Ukeleles,Herb Danziger  
 Z-999-999,U-Neek,Josef L'Africain



**Just For Openers 2007 Membership Directory**  
**Just For Openers Current Members: 244 (New Member Numbers 1103-1105)**

#	Last Name	First	Spouse	Street	City	St	Zip	Phone	E-Mail	Opener Specialties
1033	Ackerly	Tom	Bunny	445 Carson Rd	Crossville	TN	38571-0615		tacks@frontier.net.net	Soda, Can, Cast Iron Figurals
1008	Ackerman	Scott		137 E 5th St	Rifle	CO	81650-2325		ackmebreweriana@yahoo.com	General, US Beer, Can Openers, Corkscrews (Any Breweriana)
920	Adler	Russ	Jill	W11307 City Rd V	Lodi	WI	53555-9628		russadler86@hotmail.com	"D"s, "H-7", "H-11" & Adler Brau Openers
679	Alcorn	Dewaine	Irma	4416 Waterbury Ln	Lincoln	NE	68516-1520		dalcorn501@mac.com	Nebraska & Minnesota Beer Openers
230	Anheuser-Busch Co Inc	Corporate Library		PO Box 1828 Bechtold Station	Saint Louis	MO	63118-0828			(Write Attn Ann Lauenstein)
751	Arber	Bill	Barb	11162 Broadway St	Alden	NY	14004-9515		wrabra@aol.com	General, US Beer, Soda, Types, Cast iron Figurals, Starr, esp "B-1"s & "B-2"s
810	Armstrong	Steve	Robbin	PO Box 741	Kamahia	ID	83536-0741		sunset@cybrquest.com	US Beer; All Montana & Idaho & H-8s, L-1s, M-1s, M-2s
620	Asplund	Robert	Bette	32732 Early Rd	New Carlisle	IN	46552-9674		asplundrobert@comcast.net	
771	Atkinson	Murray	Pam	9096 E Bella Vista Ct	Floral City	FL	34436-2401		murpam@atlantic.net	US Beer Openers, Antique Can Openers & Corkscrews
641	Atkinson	Tom	Gillian	5 Old Long Plain Rd	Amherst	MA	01002-9519			Corkscrews
1064	Atwood	Rick	Darlene	625 North Sandwich Rd	North Sandwich	NH	03259-3400		daramesing@aol.com	US Beer, Soda, Can; esp NH & Cars
1073	Baburek	Bill	Jennifer	7905 S 45th Ave	Bellevue	NE	68157-2601		bjbaburek@cox.net	Nebraska
415	Bachmann	Kurt	Debbie	4841 Jamm Rd	Lake Orion	MI	48359-2222		kurtb@steelserVICES.com	All Michigan Breweriana
729	Bailey II	Eddie	Carol	4408 NE Sunnybrook Ln	Kansas City	MO	64117-1922		ecbaileys@yahoo.com	Any Advertising or Figural Openers
1061	Balanda Jr	Thomas	Michele	772 Foxtail Dr	York	PA	17404-6613		thomas.balanda@honeywell.com	US Beer, Types, esp Pennsylvania
406	Barren	Mark		6141 Tachi Dr	Newfane	NY	14108-9517		mbarren@verizon.net	NY & PA Openers
416	Bates	Mead	Rosemarie	23 Gardiner St	Darien	CT	06820-5111		cymbainc@aol.com or meadb@aol.com	Manufacturer of Bottle Openers (Cymba Inc)

585	Behnken	Ron	Jan	405 S Brewer St	Manchester	IA	52057-2206		rjbehnken@n-connect.net	US Beer, Soda
1000	Behrends	Robert (Bob)	Linda	706 E Washington St	Havana	IL	62644-1555		billbob23@casscomm.com	US Beer, Soda, Starr Wall Mounts, Wall Mounts
1059	Belknap	David	Diane	326 Hawthorne Ave	Palo Alto	CA	94301-1123		dwb@angstrom.net	General, US Beer, Types
389	Benjamin	Marc	Pat	167 Nixon Beach Rd	Edenton	NC	27932-9447		pbenj@inteliport.com	US Beer, Types (One of Each), Cast Iron Figurals, esp Flay Steel Figurals
1075	Benny	Ray		160 Brandt Ave	Oak View	CA	93022-9522		rbenny@sbcglobal.net	General
903	Berg	Roger	Carolyn	14835 SW Gearhart Dr	Beaverton	OR	97007-6618		rrberg1@juno.com	Unique Mechanically
841	Bestard	Richard		208 Barranca Ave #43	Glendora	CA	91741-3202			General, US Beer, Soda, Corkscrew; esp Rochester NY
786	Bittermann	John		621 Homestead	Joliet	IL	60435-5105		jebitter@aol.com	All Illinois Openers & Breweriana
699	Blalock	Lin	Shirley	908 Wyldewood Rd	Durham	NC	27704-1602			NEHI or NE-HI
767	Bohle	Mylen	Diane	655 NE Ochoco Ave	Prineville	OR	97754-1230		mylen.bohle@oregonstate.edu	General, All Bottle Openers & All Corkscrews
478	Bolton	Fred	Sue	2133 Lower Lake Rd	Hastings	MI	49058-9406		f.abolton@core.com	Type "E-14" Openers
709	Bongiovanni	Robert	Denise	154 Springers Mill Rd	Cape May Court House	NJ	08210-2039		bonge@verizon.net	General, U S Beer, Soda, Foreign Openers
922	Brand-Papcke	Elizabeth	Darvon	N7137 County Highway P	Whitewater	WI	53190-4471		brand-papcke@aol.com	US Beer, Soda, Corkscrews
914	Brim	David	Cathy	624 W College Ave	Decatur	GA	30030-3609		david@bottleopener.com	Starr Bottle Openers from Brown Mfg. Co. (Current Owner of Brown)
528	Britton	Richard "Dick"	Bonnie	2902 Lacota Rd	Waterford	MI	48328-3127			General, US Beer, Soda, Can Openers
675	Broders	Ed	Patti	10220 Westwood Ave	Baton Rouge	LA	70809-3243		edbroders@yahoo.com	"O" & "K" Types & Louisiana Openers
1062	Brown	Keith	Kathy	778 Foxtail Dr	York	PA	17404-6613		brown@maple-vaill.com	US Beer & Types esp One from Each State and Each Beer/ Brewery
502	Brunner	William	Jo Ann	8773 W Mineral Point Rd	Mount Horeb	WI	53572-1229			Wall Mounts & "M-29-30-83"
642	Bryant	Donald	Loretta	3011 Firestone Dr	Sterling Heights	MI	48310-6025		donnloretta@comcast.net	Michigan Openers
1	Bull	Don	Bonnie	PO Box 596	Wirtz	VA	24184-0596		corkscrew@bulworks.net	All Corkscrews, Beer Knives, Beer Ice Picks & Beer Letter Openers

749	Burgart	Paul		PO Box 200147	Boston	MA	02120-0003		farm2sea@yahoo.com	Cast Iron Figurals, Iowa & California Openers
957	Burke	Richard	Rivelle	30 Westminster Dr	Marlborough	MA	01752-3679		rburke46@lycos.com	US Beer, Can, Cast Iron, Starr, Foreign
822	Burruss III	John		318 Lost Oak Dr	Canyon Lake	TX	78133-5720		burrjeb@gvtc.com	US Beer; As, B-24, Cs, E-1, E-2, E-3, E-14, L-4, M-3
824	Calhoun	Mike	Linda	424 Joilet Rd	Marquette Heights	IL	61554-1426		mgcalh@yahoo.com	Openers & Corkscrews All Types
690	Campbell	Bob	Elayne	12117 N 138th St	Scottsdale	AZ	85259-3760		bobcaz8@aol.com	Beer Advertising Openers
1105	Campnell	Tommy		2451 N Clybourn Ave Unit 1	Chicago	IL	60614-1936		tommy.campnell@gmail.com	Corkscrews, esp Syroco and variations (openers, brushes, clocks, advertising signs & catalogs)
1083	Cannon	Keith	Roxie (Dog)	1135 Julius Dr	Salisbury	NC	28147-8643		casey28@carolina.rr.com	Pepsi-Cola Openers & Wall Mount Soda
530	Carlson	Brian		6938 Upper 5th St N	Oakdale	MN	55128-6719		bmitchellc@junco.com	US Beer esp Hamms
587	Cartwright	John	Cheryl	1548 Via Arroyo	Paso Robles	CA	93446-1838		jccm@charter.net	"A"s, "B"s, P Wood Handles (Beer & Soda) & Golden West, Port Townsend & Rainier Brewieriana
939	Clark	Bill	Terrie	689 Center Ave	River Edge	NJ	07661-2406		terrieclark@optonline.net	US Beer, Soda, Cast Iron Figurals, Starr Wall Mounts, Wall Mounts, Foreign
733	Clark	Dick	Jackie	8410 S Ave D	Yuma	AZ	85364-8441		rwclark@uswest.com	B-24/E-4/G-9/I-22
927	Clovis	Steve	Sharon	3246 Woodfield Dr	Walworth	NY	14568-9442			Mainly "B"s, B-14, B-18, B-19, B-21, B-22, B-23, B-24 and some "A"s
1014	Coleman	Gary	Kathy	11 S Culver St	Port Jervis	NY	12771-3901		gcoleman@summitresearchlabs.com	General; Like Corkscrews & Knives w/ Openers best
649	Collier	Wayne	Jeane	13317 Vista Arroyo	San Antonio	TX	78216-2243		wcollier@satx.rr.com	Types (1 of Each), Figurals
1067	Corn	James	Ruth	8416 E 176th St N	Collinsville	OK	74021-4222		corn_jimmy@yahoo.com	General
345	Counciller	Dr Harry	Carol	937 Atir Ln	Greenfield	IN	46140-2828			General (Beer & Brewery Related)
204	Cress	David	Susan	1816 Elizabeth St	Janesville	WI	53548-2704		drscmc@sbcglobal.net	General
531	Creuziger	Dick		1226 Grove Ave	Racine	WI	53405-3043			Pabst & Coca-Cola
1057	Curtin	Dan	Pam	12 Shelia Crt	Yorktown Heights	NY	10598-2214		dan98501@yahoo.com	US Beer (Older Can/ Bottle Openers)
1101	Cutting	Robert	Amanda	5025 Wrangler Dr	Winston-Salem	NC	27101-6442		cuttingspicer@triad.rr.com	General; Any Interesting Advertising Piece, esp Artistic Ones



246	Danziger	Herb	Camille	550 Cherry Ct	Birmingham	MI	48009-1459		hkdcfd@sbcglobe.net	US Beer esp Silver Top & Royal Brew (KC) Beer Openers, Corkscrews, (Ukuleles & Wedding Cake Tops for Camille)
5	Darocy	Alex	Colette	9723 Bluestem Path	Prunedale	CA	93907-1006		alexdarocy@aol.com	
953	Davis	Clark	Janice	47445 Rainbow Oaks Dr	Temecula	CA	92592-2937			General, US Beer, Corkscrews, Cast Iron Figurals
91	Deachman	Gary		PO Box 438	North Woodstock	NH	03262-0438			M-1s M-2s, New Hampshire Openers, Bottle Shaped, L-2s L-4s
40	Donoghue	John		PO Box 311	Lynn	MA	01905-0511		jpd01905@aol.com	General (Anything that Opens a Can or a Bottle)
7	Dummer	Duane	Carol	910 N Palmatory St	Horicon	WI	53032-1011			Figural Openers, Corkscrews, All Types of Interesting Openers
663	Dutcher	Mickey	Ellie	134 Cortland-McLean Rd	Cortland	NY	13045-9803		mdutche1@twcny.rr.com	Cast Iron Openers, Iroquois Openers, Syrocco Corkscrews & Openers
636	Dye Jr	Ralph		PO Box 178	McConnelville	OH	43756-0178			M-3s & M-73s
763	Ellison	Dana	Catherine	1493 E Hill Rd	Ludlow	VT	05149-9623		kayakers007@yahoo.com	All Advertising Openers
738	Emme	Sandra	Gary Sabel	PO Box 1454	Upper Marlboro	MD	20773-1454		emmyaward@yahoo.com	Corkscrews, Cast Iron Figurals, Washington DC
1094	Ennis	Lyle	Rosa	3331 S 35th St	Milwaukee	WI	53215-4102			General
998	Evans	Edgar	Debbi	PO Box 820	Greenacres	WA	99016-0820		endevans@msn.com	US Beer, Soda, Corkscrews, Starr/Wall Mounts esp A,B,C
1096	Fadina	Terry		674 W Canfield St	Detroit	MI	48201-1140		taf520@sbcglobe.net	Figural Cast Iron
412	Feisel	Lyle	Dorothy	PO Box 839	Saint Michaels	MD	21663-0839		l.feisel@ieee.org	General Beer Advertsing
865	Fisher	John	Tina	PO Box 953	Mechanicville	MD	20659-0953		burntwoods@verizon.net	Pennsylvania & Micro Openers
1070	Fleckenstein	Al	Nina	2445 NW Raleigh St	Portland	OR	97210-2634		flecks@spiritone.com	US Beer (Fleck's Beer Openers esp B-24-95 Flecks)
1098	Flocks	Celeste	Jeffrey	PO Box 394	Bovard	PA	15619-0039		peppersalt@comcast.net	US Beer, Soda, Corkscrews, Types, Sliders; esp Western PA (eBay Name: pepper1978)
8	Ford	Jack		5351 Boyd Ave	Oakland	CA	94618-1111			A-Types & Rainier Brewing & Hawaiian Brewing

723	Fossette	John	Mandie	2549 Sixth Ave	Sacramento	CA	95818-3905		9168331402@mobile.mycingular.com	Type "A" Openers
1032	Friedman	Dick	Maggie	6600 Sabrosa Ct W	Fort Worth	TX	76133-5221		dicknbo@chartar.net	Coca-Cola Openers
498	Fuerst	Norma	Thomas	11 Oak Valley Rd	Bloomington	IL	61704-7438		ntfuerst@peoplepc.com	General & "Joseph Schlitz" Openers & Breweriana
1042	Galizia	Anthony	Trinidad	120 Village Blvd	Canfield	OH	44406-1355			US Beer, Soda & Corkscrews
604	Gausepohl	David		8930 Evergreen Dr	Florence	KY	41042-8713		beerdave@fuse.net	All Beer Openers Especially Kentucky Micros & Midwest Breweries
333	Gauvin	Paul	Gail	4 Rosedale Rd	West Bath	ME	04530-6447		pl@gauvin@yahoo.com	Connecticut Beer, Soda, Starr Wall Mounts, Wall Mounts
1025	Gittings	Michael		2688 Mountain Rd	Danielsville	PA	18038-9666			US Beer, Soda, Cast Iron Figurals, Starr/Wall Mounts
605	Gormally	Tom	Phyllis	22555 Cardiff Dr	Santa Clarita	CA	91350-3029		tomphyllis@carrr.com	US Beer; Types C, E, G, H, I (esp I-7), J
724	Goss	Janet	John	PO Box 524	Buffalo	WY	82834-0524		olyguy1940@msn.com	Montana & Wyoming
401	Graff	Fil	Robbie	10111 Lincoln Way W	Saint Thomas	PA	17252-9513		fgraff@comcast.net	
187	Green	Craig	Susan	2715 67 Crt SW	Olympia	WA	98512-7101		miscmonger@comcast.com	Pre-Pro Northwest Openers & Corkscrews
1044	Grove	Jim	Carolyn	121 S Patterson St	State College	PA	16801-3912		grove1060@adelphia.net	US Beer, Types, esp PA & NY
1088	Gruba	Denny	Julie	1232 SE Bay Dr	Forest Lake	MN	55025-2035			US Beer, Soda, Types, Wall Mounts, Cans (Beer & Soda)
666	Hall	John	Anna	2562 Snap Dragon Ct	Sebring	FL	33872-4232		halann@earthlink.net	A-12s
651	Hanold	Bill	Karen	9677 N Fire Leaf Dr	Bloomington	IL	61704-5506		bkhanold@aol.com	US Beer Openers
606	Hanson	Ray	Pat	14345 Canterbury St	Leawood	KS	66224-3932		rfhanson@kc.rr.com	"A" & "B" Openers, Corkscrews
208	Harding	Russ	Sylvia	2665 Tamora Way	Colorado Springs	CO	80919-3570		rusnsylvia@aol.com	US Beer, Can, Starr Wall Mounts, Wall Mounts
13	Haydock	Herbert	Helen	1660 2nd Ave S	Wisconsin Rapids	WI	54494-4705			All Breweriana
748	Hedges	Robert	Leticia	934 W Woodcrest St	Bloomington	CA	92316-1534		rjnleti@aol.com	All Openers
1093	Heinzerling	Derek		2605 Marble Ave NW	Albuquerque	NM	87104-1703			General
1066	Hibbard	Pam	Peg Katz	19127 30th Ave	Chippewa Falls	WI	54729-9137		doctorpammy@aol.com	US Beer, Soda, Corkscrews, Cast Iron Figurals

149	Hibbeler	Ollie	Shirley	535 Villa Piazza Ct	O'Fallon	MO	63366-4448			US Beer & Soda esp Missouri, Wire Corkscrews (P-1,P-73,P-88,P-94), Types
725	Hoesch	Kenny	Ruby	PO Box 299	Zeeland	MI	49464-0299		solomon@zeelandlaw.com	Cigar Box Openers (All Kinds)
261	Hoffman	Ben	Cornelia	213 Simmons Rd	Perkiomenville	PA	18074-9587		benbey@netcarrier.com	US Beer & CBOs
760	Hoffman	David		929 W Broad St	Williamstown	PA	17098-9501		dwhkk@comcast.net	US Beer
391	Hogeland	John	Linda	1430 Brendonwood Rd	Derby	KS	67037-2175		jhoge1945@sbcglobal.net	Soda Openers
476	Horn	Harry	Rose Mary	3113 Smoky Ct	Sacramento	CA	95826-4147		harhorn@sbcglobal.net	A-13 & E-4
1078	Horrigan	David		1913 Houseman Ave NE	Grand Rapids	MI	49505-4830		michmicro@sbcglobal.net	Michigan Openers
907	Huber	Mike	Deb	176 Suncoast Dr	McCook Lake	SD	57049-4016		mhuber@iw.net	General esp South Dakota, Iowa & Nebraska
512	Hufford	Terry	Janice	7147 Parkview Ave	Falls Church	VA	22042-1615		tth@gwu.edu	US Beer Openers
925	Irrig	William	Nancy	6406 Whippany Way	Burke	VA	22015-3427		wirrig@aol.com	All Domestic
853	Jacobsmyer	Ed	Ginger	1629 Chelsea Rd	Palos Verdes Estates	CA	90274-1822		edandginger@cox.net	Beer Openers
538	Jarrell	Roger	Janice	1500 Sedwick Rd	Durham	NC	27713-2626			West Virginia, Texas, & Southern Openers & Corkscrews
700	Jarrell	Taylor		1500 Sedwick Rd	Durham	NC	27713-2626			West Virginia, Texas, & Southern Openers & Corkscrews
181	Jay	Norm	Judy	839 James Ct	Wheaton	IL	60187-6344			All US Beer Openers & Corkscrews
213	Johnson	Art	Beth Peck	200 Elmwood Ln	Naples	FL	34112-3202		eejafj@earthlink.net	US Beer, M-3s, M-73s, M-140s & Belt Buckles
926	Johnson	Edward	Darlene	1300 Poquonock Ave	Windsor	CT	06095-1811		johnsoned1777@hotmail.com	New England esp Connecticut Openers All Types esp Beer
520	Jones	Odis	Janet	6423 Pine St	Green Cove Springs	FL	32043-8759		jdocotis@aol.com	All Kinds
893	Kaiser	James	Cheryl	5287 Brookside Ln	Washington	MI	48094-2678		kaiserhof@comcast.net	Detroit, Mt Clemens & Port Huron Michigan (Pre-Pro)
1102	Kaish	Richard		10 Monument Neck Rd	Buzzards Bay	MA	02532-4112		rkaish10blue@aol.com	Corkscrews (Artist Creating Sculptural Handcrafted Corkscrews)
1037	Kelch	Fran	Sherri	614 Birch Hollow Dr	Antioch	IL	60002-9367		fkelch@comcast.net	Northern Illinois Beer Openers

1030	Kellegham	Brian		735 S Lincoln St	Longmont	CO	80501 -6314		brian@bisonde signs.com	General, US Beer, Soda, Can, Corkscrews
321	Keown	Mary Ann		10547 Mert St	Saint Ann	MO	63074 -3433			"M-3"s (Beer & Non- Beer)
539	Kimmons	Mike	Jan	3801 Elledge Dr	Shawnee Mission	KS	66205 -1353		mikejan45@yah oo.com	General & US Beer esp Pre-Pro Kansas City
727	King	Charle s	Karen	32 Amsterdam Ave	Glenmont	NY	12077 -3630		king@albany.n et	US Beer from Albany, Troy, Schenectady NY (Any Hudson Valley NT Brewery)
627	King	Dennis		20 Howe Rd	Greenfield Center	NY	12833 -2029		kingfish12946@ cs.com	Anything Harvard Brewing Co, N-Style Openers, M-1-2-3
267	Kirkpatrick	Charle s	Janic e	295 Leyden St	Denver	CO	80220 -5951		charles.kirkpatr ick@uchsc.edu	Corkscrews
703	Knapp	Joseph		211-A Berbro Ave	Upper Darby	PA	19082 -2014			US Beer & Soda esp Pennsylvania, Anheuser-Busch & Root Beer Openers
909	Krejci	Mike		W19103 Lake St Lot 3	Aniwa	WI	54408 -9756		pigpen1952@ju no.com	US Beer esp Schlitz, Chief Oshkosh, Wisconsin
1022	Kreul	Royce	Karen	152 S Burr Oak Ave	Oregon	WI	53575 -1367		rkruel1@charte r.net	Cast Iron Figurals
433	Kroll	Victor	Jackie	3451 Nighthawk Ct # 433	Punta Gorda	FL	33950 -6675		beer104@comc ast.net	Wisconsin Brewery Openers & Corkscrews
1091	L'Africain	Josef	Sue	808 W Buckingha m PI #1E	Chicago	IL	60657 -2339		winedogs@rcn. com	Corkscrews esp Syroco (Lehr Roe)
759	Larson	Don	Jackie	213 N Campbell Ave	Beloit	KS	67420 -2427		jl Larson@nckcn. com	General, US Beer, Soda, Can, Corkscrews, Cast Iron Figurals, Starr / Wall Mounts
1016	Lauver	Gary	Linda	713 Athens Cv	Belton	TX	76513 -4874		lauver@vvm.co m	US Beer, Starr Wall Mount, CBOs; !950-70 (Openers from My Youth), Texas, Tool Company Beer Openers
1053	Lawhorn	Don	Carol yn	9513 Mobile Dr	Knoxville	TN	37923 -2753		dlawh53@aol.c om	US Beer esp Tennessee Openers
804	Lendy	Dave	Shari	1927 Allen Dr	Geneva	IL	60134 -3109		davidlendy@ao l.com	US Beer & Malt Openers (Esp Illinois)
435	Lewis	Samuel	Carol	113 Rockwood Dr	Pittsburgh	PA	15238 -2333			CBOs (Cigar Box Openers)
15	Lohmiller	George	Elean or	2924 Orchard Ave	Grand Junction	CO	81504 -5342			All
384	Lorett	Mike	Bobbi e	PO Box 28	Conifer	CO	80433 -0028		mloret@nilenet .com	Corkscrews
62	Lothridge	Tom		31 Pearl St	Bainbridg e	NY	13733 -1027		t121810@m.kl.c om	All Openers & Corkscrews

743	Love	George		4301 Forest Plaza Dr	Hixson	TN	37343-5017			Tennessee Openers
752	Loy	Greg	Karen	316 Lynwood Ave	Ottumwa	IA	52501-4938		middlejene2@yahoo.com	General, US Beer, Corkscrews, esp Iowa
449	Luchsinger	Paul	Anne	2815 King Rook Rd	Williamsburg	VA	23185-3237		paulcork@cox.net	Early U.S. Patented Corkscrews & Syroco Co.
1011	Lueken	Tom	Mary	14415 E Erie Rd	Albion	MI	49224-9621		tjlueken50@yahoo.com	US Beer Openers
274	Lyons	Tom	Janet	321 Valley Court Rd	Lutherville	MD	21093-6413		tlyons321@aol.com	Figurals & Anything about Golf!
816	Mahood	Jeff		303 W Elmwood Ave	Mechanic sburg	PA	17055-4126			General, US Beer, Soda Openers
275	Mandzuk	Phil	Judy	44 Hart Ave	Winnipeg, Manitoba	CANADA	R2L 0K2		philman@mts.net	Good Rare Canadian
1092	Mastrangelo	Michael	Ann	764 Glen Rd	Jenkintown	PA	19046-1529		annmastrangelo@aol.com	General
677	Maxwell	H James		1050 W Blue Ridge Blvd	Kansas City	MO	64145-1216		hjmesq@kc.rr.com	Openers; Kansas City MO Beer, Hires, Coke, Pepsi, TruTreat, Dads, Vess Soda
1007	Mayville	Dan	Bonnie	E7446 County Road H	Fremont	WI	54940-9747		dmay@centurytel.net	US Beer Openers (Wisconsin)
153	McKenzie	Elvira		6360 S Jellison St	Littleton	CO	80123-3174			
712	McNary	Robert	Gloria Counts	15335 Banjo Dr	Hudson	FL	34667-3788			All Types of Beer Openers plus Iroquois Openers
1104	Mertie	Scott	Candy	1300 Fort Sumter Pl	Brentwood	TN	37027-1701		smertie@comcast.net	All Openers from William Gerst Brewing Nashville TN
655	Milano	Hale	Todd (Dad)	506 Spring House Rd	Camp Hill	PA	17011-1454		toddmilano@centralpenn.edu	"I-7"s & Harrisburg, Pennsylvania
668	Miller	Darwin		32 La Canada Way	Hot Springs Village	AR	71909-2658		darwinhotsp@aol.com	General
732	Mlady	John	Jackie	1506 S 25th St	Omaha	NE	68105-2611			All Nebraska Openers, Corkscrews & Breweriana
840	Moldrem	Barney	Leslie	320 Highland Ave	Syracuse	NY	13203-1608		bmoldrem@aol.com	Defunct New York State & Minnesota Brewery Openers
1086	Mosier	Bob	Doris	17424 Jordan Dr	Saegertown	PA	16433-4856		dmosier@griswoldcookware.com	Cast Iron Figurals & Griswold Cookware
450	Moter	Lawrence		10149 Michaels Rd	Woodford	VA	22580-2500		accneca@aol.com	Wire E's & F's & P's Wires (Beer & Soda)
122	Mugrage	Bill	Ellen	3819 190th Pl SW	Lynnwood	WA	98036-5715		premium@pc-breweriana.com	Us Beer, Can, Corkscrews; NW US, NV, Acme & Rainier of CA

279	Muma	William	Sherron	9530 Swanbrook Ct	Elk Grove	CA	95758-1305		wksimuma@cs.com	General, US Beer, Soda, Can Openers
906	Nau	Kurt	Lisa	90 W 14th St	Deer Park	NY	11729-4022		lonestarbeer@yahoo.com	General
581	Neas	Paul	Alma	4953 Vera Cruz Rd	Center Valley	PA	18034-8632			General (All), US Beer, Soda, Can, CBOs
544	Newbold	Richard		1243 Hyman Ave	Bay Shore	NY	11706-5340		neodingo@aol.com	General
67	Nowicki	Pete	Angela	1531 39th Ave	San Francisco	CA	94122-3015		portfire86@aol.com	Hamm's Beer
1100	O'Connor	Jim	Alina	7801 SW 95th St	Miami	FL	33156-7508		joaquatics@zol.com	General, US Beer, Cast Iron Figurals
741	Olson	Floyd	Dale	18226 182nd St	Tonganoxie	KS	66086-5143		dalecookiepress@aol.com	US Beer, Soda, Can, Oxygen-Acetylene Tank Openers
223	Orth	Dennis	Mary	4210 S Lake Five Dr	Colgate	WI	53017-9764		dorth@firstweb.com	
126	Osborn	Jim	Mary Jo	311 Woodlake Dr	Carterville	IL	62918-1400		jro320@yahoo.com	US Beer Openers & Corkscrews; Pre-Pro & Illinois esp Figural, Brass (B-Types) & Litho
800	Ostrow	Ken		56 Cedar St	Newton	MA	02459-1113			New England Paper Label Bottles & Breweriana Dealer
719	Paczkowski	Joe	Rita	317 Medford Lakes Rd	Tabernacl	NJ	08088-9018		jopacz@yahoo.com	US Beer, "B", "C", "E", "G" & "H" Types from New Jersey, NYC, Pennsylvania
451	Paradi	Joseph	Monika	670 Meadow Wood Rd	Mississauga, Ontario	CANADA	L5J 2S6		paradi@mie.utoronto.ca	Corkscrews, Bar Screws, Pronged and Hooked Cork Pullers
776	Patton	John	Eileen	9224 Sugarloaf Dr	Redding	CA	96001-9763		deacon@jett.net	"B-24" "C-19" "E-1-2-3-9-11-13-14" "G-1" "H-3" "I-1-2-3-6-7-15-18-22", "J-5"
726	Pearis	Gibson	Dana	315 Berry Ave	Belton	MO	64012-1977		gibpearis@kc.rr.com	Figurals
750	Petro	Andrew	Linda	116 Otter Ln	Waterloo	SC	29384-9675		andypete@yahoo.com	Pennsylvania esp "Coal Region", F&S, Stegmaier, Kaiers
811	Pinney	Dave		1766 Red Barn Rd	Encinitas	CA	92024-3033		davecent@tmisnet.com	Metal Beer & Soda Openers; Pinney Beverage Items
977	Poeth	Richard		211 Drumheller Dr	Northumberland	PA	17857-8627		rickstir47@evnlink.com	Can Piercers, Beer & Soda "Bottle or Can"
1024	Pokrywka	Jim	Denise	279 Pearl St	Seymour	CT	06483-3719		jimpokrywka@sbglobal.net	US Beer, Can (esp I-7s, Keglines, Canco or Quick & Easy)

842	Post	Bob	Sara	4516 S Pin Oak Ct	Sioux Falls	SD	57103-4967		pst@sio.midco.net	U.S. Beer Bottle Openers
831	Preacher	Hugh		PO Box 250544	Plano	TX	75025-0544		hugh.preacher@eds.com	A,B,C,D,E, (G,H,Some),I,J & Soda
572	Queen	Harold	Ida "Boots"	1001 Centre Ave	Jim Thorpe	PA	18229-1015		haqueen@ptd.net	"A-13"s, All "C"s, All PA (Beer & Non-Beer), "M-3"s, Starr, Wall Mounts, Corkscrews, CBOs
713	Quilliam	Mike	Julie	65 Maria Dr	Great Falls	MT	59404-3769		mikequill@aol.com	All Montana Beer Openers
734	Ransom	John	Norma	PO Box 97	Osborn	MO	64474-0097			US Beer & Soda
470	Redl	Alex	Peggy	1009 Elk St	Beatrice	NE	68310-3026		vwbug65@alltel.net	Little-Bit-Of-All-Kinds
358	Rees	Carl	Pat	11366 N Rio Vista Rd	Pocatello	ID	83202-5315			All Beer & Soda Openers
976	Reizner	Raymond	Tracy	5757 N Sheridan Rd Apt 17H	Chicago	IL	60660-8710		racyray@aol.com	Bottle & Beer Openers
695	Reynolds	Susan		2117 21st Ave S	Birmingham	AL	35223-1716		sreynolds@progressiveag.org	"A"s of Any Kind
777	Roche	John		2815 N 58th St	Scottsdale	AZ	85257-1009		jroche5@cox.net	New York Openers
359	Roe	Lehr	Joan	599 Ridge Point Dr	Dundee	MI	48131-8630		lehr@cass.net	Corkscrews
1074	Roeser	Charles	Janet	4356 Buckingham Ct	Saint Paul	MN	55127-3682		c.roeser@comcast.net	US Beer, Can, Cast Iron Figurals, Types; esp Minnesota
1051	Roy	Mario	Roland Goulet	126 Rue Dufresne	Saint-Jean Sur Richelieu Quebec	CANADA	J2W 1L9		marodecaps@sympatico.ca	General; Bottle Openers Only (Worldwide)
158	Santen	Art		6126 McPherson Ave	Saint Louis	MO	63112-1104			General (All), Anything and Everthing That Opens Solid and Liquid Food Containers
691	Schaefer	Ed	Kelly	PO Box 149	Maple Springs	NY	14756-0149		eschaeferbeer@juno.com	Schaefer, Koch, Jamestown, Chautauqua, Cleveland Beers
442	Schiffers	George		882 Huron Ave	San Francisco	CA	94112-4038			US Beer, Soda
1072	Schmidt	Robert	Pam (Daughter)	102 W 12th Ave	Milan	IL	61264-3036		schmidt-robert@sbcglobal.net	General
983	Schroeder	Dick	Betty	3857 E Cavalry Hills	North Platte	NE	69101-9545		dbschrod@charter.net	Any Opener with Advertising of Nebraska Towns
688	Schuldheisz	Lawrence		851 Doss Ave	Orlando	FL	32809-5880			General

443	Sell	Bill	Althea	457 Holly Ave	Saint Paul	MN	55102-2205		bsell1@isd.net	Corkscrews esp Souvenir & Nifty
898	Sepenoski	John	Rita	PO Box 120	Peconic	NY	11958-0120			All Openers
1001	Shepler	Richard	Janice	PO Box 269	Duck River	TN	38454-0269		rjs@isd.net	US Beer, Can, Corkscrews, Cast Iron Figurals
175	Sherk	Lawrence		PO Box 98094 970 Queen St E	Toronto, Ontario	CANADA	M4M 1J0		larrysherk@hotmail.com	All Canadian Breweriana including Openers
18	Sherman	Don	Ruth	438 Mavis Dr	Los Angeles	CA	90065-5054		sdasherman@aol.com	US Beer esp "A" & "B", Corkscrews, Cast Iron Figurals
499	Shoulter	Jim	Jerry	109 Old Water Mill Rd	Rainbow City	AL	35906-6121		jjshoulter@bellsouth.net	Glasses-Mugs-Steins-Signs-Trays
672	Skelton	Allan	Karen	1055 86th Ave W	Duluth	MN	55808-1414		askell71055@msn.com	Types "A" & "B"
832	Skiba	Scott		214 N Iroquois Ave	Margate City	NJ	08402-1740		irwin1990@comcast.net	Scott Products Figurines, US Beer, Cast Iron, Starr, Wall Mounts
1089	Smart	Tom	June	8 Hawthorn Ct	Petaluma	CA	94952-2113			Cast Iron Figurals, Starr/Wall Mounts
410	Smith	Henry	Linda	5459 Woodhaven Dr	Cincinnati	OH	45248-5113		maaematt@cinci.rr.com	Cincinnati & Surrounding Areas
1099	Smith	Scott	Nicole	414 Duryea Dr	Auburn	IN	46706-1928		toolmaker2169@yahoo.com	US Beer, Wall Mount; Antique, also Bottle Caps
1009	Smith	Thomas	Arlene	10202 Concord Ave	Sun City	AZ	85351-4541			General
1020	Solari	Chris		PO Box 2	Sweptsonville	NC	27359-0002			Beer Can Openers
678	Sommer	Robert	Janet	413 Scott Dr	Silver Spring	MD	20904-1065		rjs888cpa@aol.com	Mostly US Breweries & Oddities
868	Sorrel	Glen	Deanna	10101 Brightling Ln	Austin	TX	78750-3875		gsorrel@kenedywilson.com	Key Shaped Openers & All Openers with Prest-O-Lite Key
1039	St Amand	Mike	Theresa	198 Manly Street	Midland Ontario	CANADA	L4R 3C2		mf5@sympatico.ca	General, US Beer, Soda, Can, Corkscrews, Cast Iron Figurals, Any That Catch My Eye
176	Stahly	Bob	Marge	1508 E Bridge St	Streator	IL	61364-3114		stahly2@msn.com	Wall Mounts
930	Stambaugh	Pat	Louy	718 S Lakeshore Dr	Lake City	MN	55401-1849		p.stam@mchsi.com	Minnesota A, B, O & P Beer & Non-Beer & Letter Openers
339	Stanley	John	Pat	PO Box 64	Chapel Hill	NC	27514-0064		jfo@mindspring.com or john_stanley@unc.edu	US Beer A-9, A-13, B-22, F-9, G-1, G-5, G-10, H-1, L-2, O-4, O-8, O-10, O-19, Knives, Corkscrews



184	Stawarz	Henry	Marge	RR 2 Box 131	Rushville	IL	62681 -9637		ohmy@winco.net	General (All)
667	Steinke	Tom	Sharon	W343 S10062 Hwy E	Eagle	WI	53119 -9999		tomsteinke2004@hotmail.com	"A"s & "B"s, US Beer, Soda, Cast Iron Figurals, Starr Wall Mounts, Wall Mounts
980	Stilwell	Darvin		1533 Houston Rd	Boonville	IN	47601 -9415		dstilwell@earthlink.net	All Types
896	Stinson	Don	Lynda	PO Box 105 143 Haskins Point Road	Seeley's Bay, Ontario	CA NA DA	K0H 2N0		rideaubreeze@bellnet.ca	Starr Wall Mounts
991	Sudduth	Robert	Janet	1115 Lebanon Ave	Belleville	IL	62221 -4017		bud_bob@charter.net	Brewery Corkscrew Knives
375	Summers	Stan	Pat	5880 N Livernois Rd	Rochester	MI	48306 -2538		wagscreek@sbcglobal.net	Michigan Stuff
661	Sutton	Lou	Rita	PO Box 1112	Mechanic sville	VA	23111 -6112		louva40@comcast.net	General; All Virginia Openers
769	Swanstone Jr	Donald	Julie	601 Main St	Dearborn	MO	64439 -9111		ds5@peoplepc.com	General, US Beer, Soda, Corkscrews, Cast Iron Figurals, Types, Starr, Wall Mounts, CBOs, Foreign
1084	Teeter	Mike		833 Washtenaw St NE	Grand Rapids	MI	49505 -4845		mdteeter@comcast.net	General, US Beer, Can, Wall Mount Openers
626	Teggatz	Bonnie		427 G Ave NW	Cedar Rapids	IA	52405 -2643		twintin2@yahoo.com	Soda, Can, Kitchen Utensils with Openers
515	Tewksbury	Ralph	Linda	512 W Wildwood Dr	Parkersbu rg	WV	26101 -7641		rtewks@casinetrnet.net	Types C & E Beer Openers
1080	Thole	Greg	Deb	224 Broadmoor Ln	Rotonda West	FL	33947 -1903		drurgreg@earthlink.net	Miscellaneous esp Michigan Openers
363	Thompson	Thom	Frances	1389 Alexandria Dr Ste 7	Lexington	KY	40504 -1777			Coca-Cola Openers & Knives-Vintage & Lexington, KY Brewery Openers & Opener Literature
852	Thoms	Ernie	Jeannette	206 Windemere Way	Anderson	SC	29625 -5267		rail@carol.net	US Beer & Soda; Southern Ohio esp Dayton & Cincinnati
1081	Trickey	Harold	Susan	11132 N 165th East Ave	Owasso	OK	74055 -6025		salexa2088@aol.com	General, US Beer, Soda, Can, Corkscrews, Types, Cast Iron, Starr/Wall Mounts, Foreign
1055	Vine	George		219 Murray	Greenfield Park Quebec	CA NA DA	J4V 1N5		geovin@securenet.net or geovin@videotron.ca	Canadian Beer Openers
162	Vollrath	Verne	Laverne	218 S Lexington Dr	Janesville	WI	53545 -4322			All US Beer & Malt Openers

227	Wagner	Paul	Stella	1180 Ben Franklin Hwy E Apt 201	Douglasville	PA	19518-1803			Types
228	Waldo	Harriet		1003 Winston Dr	Jefferson City	MO	65101-3647		hlwaldo@socket.net	"H"s & Any Missouri & Anything That Catches My Eye
975	Waters	Ken	Kathy	803 Highland Trl	Chapel Hill	NC	27516-8645		ken_waters@unc.edu	Corkscrews
1103	Weekley	Jacqui e	Michael	190 Longfellow Rd	Waltham	MA	02453-6776		m-jw@comcast.net	US Beer Openers
728	Westall	Jack	Wanda	6000 Riverside Dr Apt A-470	Dublin	OH	43017-5495		jwestall@columbus.rr.com	All Beer Opener Types (Except Wall)
583	Whelan	Cora		3216 S 51st Pl	Lincoln	NE	68506-3489			
933	White	Bruce		3976 W Cindy St	Chandler	AZ	85226-3879			General, US Beer, Starr Wall Mounts, Wall Mounts
296	Wilcox	Darwin	Ellen	8495 Croix Trl	Roscoe	IL	61073-9158		darnle@mail.com	General (All)
488	Williams	Don	Diane	1022 Diablo Rd	Danville	CA	94526-1924		plumpjack2@yahoo.com	Types, Falstaff (www.a-falstaff-collector.com)
365	Williams	Scott	Ursula	11601 Tissel Hollow Rd	Fairfax	IA	52228-9789		scottwill@southslope.net	Iowa Beer Openers, Cap-Lifter Knives with Opener Built In Handle (Beer or Non-Beer)
326	Wisconsin State	Historical Society		816 State St	Madison	WI	53706-1488			
1095	Wood	Alfred	Sandra	710 N Lafayette St	Florissant	MO	63031-4918		acwood@prodigy.net	All Openers (Types & Styles)
1097	Woodard	Mark		1126 Riverboat Ct	Annapolis	MD	21409-5439		mark.woodard@nasa.gov	US Beer Openers, Soda Openers, Can Openers, Corkscrews, Starr Wall Mounts, William Painter, Crown Cork & Seal Co, Bottle Seal Co,
143	Wulff	Rod		623 Fern Way	Eldersburg	MD	21784-8516		emjomaco@yahoo.com	
314	Young	Joe	Jackie	36 S Weston Ave	Elgin	IL	60123-6036		jgy_x2@yahoo.com	Corkscrews & Tin Can Openers
996	Zurava	George	Rebecca	2928 Silver Lake Blvd	Silver Lake	OH	44224-3037		leisy57@aol.com	US Beer Openers and Northern Ohio Breweriana

**Please send any Directory Corrections to John Stanley PO Box 64 Chapel Hill NC 27514**

## “Opener and eBay Trivia”

In the last issue a picture of Jack Ford’s “cork puller” marked “Happy Days Are Here Again” was shown and the following responses were sent by Don Bull and Herb Danizger. Don’s referred to a “Daily Screw” article he had done on a patent by William T. Vallandingham of Oskaloosa, Iowa. His patent on April 7, 1908 is for a knife with interchangeable blades, one of which is a cork puller. Herb sent in this picture (below) to Don of Vallandingham variation marked “VAL-BER PULL CO., OSKALOOSA, IOWA, PAT APR 7-08”. Both may be correct but the phrase “Happy Days Are Here Again” most likely refers to the April 7, 1933 “Repeal of Prohibition”. Also Jack’s piece is marked “Pat. Pend” so if it is Vallandingham’s patent you would think it would be marked “Patented”. Research will need to continue before we get a definite answer. Thank you Jack for finding a great “mystery” piece and thank you Don and Herb for offering a possible explanation of the origin.



The common talk among JFO members is “there is nothing good on eBay”. I joined in the chorus and then once I have keyed in the quarter results, I end up saying, “there was a lot of nice openers and corkscrews sold this quarter”. The January to March period was no exception.

“A”s as usual saw lots of nice examples sold. The one “A” I was happy to get was the A-13-UL “Gold Medal Beer.” The price of \$162.49 did not make me happy but this is one of the few cars with any kind of ad that I have seen with the maker’s name “Advertising Novelty Co. of Chicago”. No one including myself seems to know for sure which brewery put this opener out as several had a “Gold Medal Beer”. The opener came out of a Kansas estate auction.

Other “A” highlights were an A-2-UL Hamms Beer which ended up in Pat Stambaugh’s collection at \$142.50. It is still amazing we had never seen an official U. S. beer ad on this style until two years ago and now this makes the third official one in two years. Coca-Cola openers were headed by an A-5 going for \$219.49. Even though lots of repro A-9 Coca-Cola baseball players are sold every week on eBay, once again one went way too high at \$114.50. Another uninformed buyer who should have

paid no more than \$10.

Beer “A”s were highlighted by three tough openers, an A-15-35 Crown at \$113.99, an A-15-65 Klinkert at \$121.49 and an A-17-8 Rainier at \$128.50. I am not sure what is going on with the A-21-10 Ziegler Beer spinners but all three went high with the low price being \$52.98. A Coca-Cola collector got the unusual A-21 with an add for Coca-Cola and Schmidt City Club Beer at \$116.49. The final surprise “A” piece to sell this quarter was an A-42-21 Fisher (Fish Shaped) bringing \$157.55. I sold mine on eBay last year and it got one bidder at \$49.99.

Good “B”s were very plentiful this past quarter but one result was astounding to say the least. The B-2-42 Lone Star in rough condition bringing a \$1,009.05. Certainly a record for a “B” of any kind but with its poor condition it was an amazing price. The steal of the quarter went to Bill Arber getting a nice B-2-UL Philadelphia Brewing for \$91.00.

The Minnesota boys chased several good “B”s with the notable ones being a B-14-143 Kiewel at \$212.50 and a B-21-UL White Seal at \$152.51. The other beer highlight was a B-23-179 Cassville bringing \$102.50. A really tough opener to find.

Coca-Cola “B”s were another story as a couple brought very high prices. Top honors went to a B-18 Coca-Cola from Oklahoma City at \$355.00. Maybe it was an Oklahoma collector chasing it but I am not sure why this one went so out of sight. It was followed by a B-18 Coca-Cola In Bottles bringing \$240.49. The reason behind this steep price was it was marked “Oscar Heyman NY” and this mark is found on a lot of beer “B”s. It was assumed by bidders that this was Oscar Heyman the New York jeweler and it may be but certainly not a rare mark.

The Canadian collectors fought over a nice C-1 Drewrys (no paint) with dates of 1877 and 1917 before it sold for \$179.37. The one notable cast iron was an English “D” type being shaped like a “Cat’s Paw” and so marked. It brought \$100.12. Larry Moter got “The E” opener this quarter when he got a nice E-22-UL Diamond Spring Brewery for \$68.00. Of course if we must mention the E-6-208 Old Lancaster Larry got in a lot of 9 openers for \$19.99. That was the “steal of the year”. An E-17-13 Oneida in fair condition brought \$79.99. The one surprise result in the “E”s was an E-9-22 Welz and Zerweck bringing \$70.00 with a BIN (Buy-It-Now). This is more

## “Opener and eBay Trivia” (Continued)

like a \$15-20 opener.

“F”s were not too exciting this quarter and Figural Cast Iron openers were plentiful as Terry Fadina started selling duplicates from the Dale Deckert Collection. His nice FBOC-418 Winking Boy brought \$1,500.00 while two in average condition brought \$800.00 and \$760.00. A rare FBOC-537 Coyote did not meet reserve (DNMR) at \$537.00.

One interesting “G” type, a G-9-36 Kochs, in nice condition drew several bidders before closing at \$61.99. Ben Hoffman mistyped his bid (instead of a \$10-20 bid he missed a decimal place and entered a bid in the \$100-200 range) on the H-2-UL Sierra Brew and he was the winner at \$70.69 (much less than his high bid). In the end he was happy he got this UL. I have done the same thing as Ben and only a couple of times and have not had to buy anything I didn’t want. It is easier to do than you think.

“K”s or “Bar Mounts” were highlighted by a hard to find K-9-1 Blatz bringing \$404.05. Numerous “L-1”s and “L-2 A-B”s sold this past quarter with no unusual results. “L-4” wood bottles saw the same seller from Wisconsin selling slender styles with some known listings but several were ULs. It is possible he found a stash of them but they have the “foil label” which is the easiest one to fake. All I can tell you is to be careful if you buy one.

Sliders or “M-3”s saw some high prices again this quarter. A M-3-35 Duquesne that normally sells for \$50-75 brought \$293.50. Jeb Burruss got a great buy in a M-3-40 Deer Park (Red) at \$76.00. Bill Arber got the M-3-40 Deer Park (Yellow) in fair condition for \$51.00. Another interesting sell was an M-1-4 Haffenreffer bringing \$224.55. The Haffenreffer is somewhat tough especially to find real nice but in average condition, it is not worth that high of a price. Gary Deachman’s great collection of “M-1”s and “M-2”s is worth a fortune.

Every issue now I must mention the sale of the M-19 repro Coca-Cola Brass Muddlers. Several sold this past quarter and prices ranged from \$40.00 to \$246.50. It worth’s \$10-20 as a conversation piece and no more. The first M-20-1 Gutsch I have seen for sale was won by Mike Krejci at \$60.59 ( a red headed collector bid \$59.59).

“N” or “Novelty” types were highlighted by a Canadian N-24 knife bringing \$112.83 with advertising for “Lucky

Lager BC Bud”. Mike Krejci got a real buy in an N-36-UL Schlitz knife for \$12.61. Another nice Canadian knife similar to an N-68 and advertising The Kuntz Brewery LTD brought \$89.99 (I was the runner up again).

“Wall Mounts” or “O”s saw many examples sold with the most interesting prices brought by Coca-Cola openers. I won an O-18 (“Toothed Wall Mount”) for \$209.49. It is one of the few O-18 Coca-Cola openers I have seen actually marked “The Protector Co”. Not that I have seen that many O-18s, maybe 6 or 7. The highest selling “O” was an O-501 Coca-Cola (“swivel hook”) which brought \$355.59. As always prices can really vary as two MIB O-505 Coca-Cola wall mounts sold with the first bringing \$187.50 and the second one only \$76.00. Starr openers in general have seen prices level out with no real spikes the last few quarters.

“P”s or beer corkscrews had many nice examples sell and as is customary the high price went to an A-B knife. It was a P-26-10 with a leather pouch and it sold for \$1,323.00. One area that has taken off the last few months has been P-6 style souvenir corkscrews with paper labels. I use to figure \$20-25 was steep for these but this past quarter one from Sequoia National Park brought \$330.00 and several others sold in the \$100-200 range. Dick Britton had a whole board at Chicago in 2000. If these prices keep rising he will be a millionaire soon.

General corkscrews saw numerous good examples with the highest priced one being a French Steel Cage bringing \$9,999.99 (only one bidder). The worldwide assortment included some dubious repros offered from the country of Belarus (through apparently some Australian seller). Once the word got out to collectors the final result price of the repro dropped accordingly. One unsuspecting collector did pay \$2,250.00 for a fake English Royal Club corkscrew from Belarus. As many knowledgeable collectors have said when it is too good to be true then usually something is wrong.

As this newsletter goes to press I have just returned from the big Charlotte, N. C. flea market and all I found were two \$5 openers and really did not see anything opener or corkscrew wise that would merit an offer. I saw one figural laying in a case and asked how much without seeing the ad. It was an A-5-8 Utica Club in rough and the dealer asked \$125.00. A \$15-20 opener in nice condition. There’s always next time and that will be in Harrisburg in two weeks. Be there!!!

“Opener and eBay Trivia” (“BIN” Buy-It-Now & “DNMR” Did Not Meet Reserve)

- A-001-019,Santa Cruz,\$54.99
- A-001-022,Fresno Var A,\$31.00
- A-001-048,Sebewaing,\$37.63
- A-001-068,Liberty (EX),\$71.00
- A-001-8UL,Kent's Malt Store,\$20.52
- A-001-999,Crown Throat & Opener,\$61.99
- A-002-8UL,Hamms Beer Harry Young,\$142.50
- A-004-009,Leisy (Good),\$32.05
- A-004-013,Akron,\$38.87
- A-004-999,Flynn Quincy IL,\$37.00
- A-004-999,Keystone Soft Drinks,\$32.67
- A-005-096,Woolners,\$19.50
- A-005-999,Coca-Cola In Bottles,\$219.49
- A-007-005,Marx Malt,\$15.50
- A-007-013,Mohawk,\$13.27
- A-009-002,F & S,\$154.48
- A-009-025,Top Notch Products,\$43.52
- A-009-030,Bethlehem Malt,\$46.00
- A-009-035,Centlivre,\$84.99
- A-009-041,Gin Malt,\$47.99
- A-009-999,Coca-Cola (Repro),\$114.50
- A-011-001,Wooden Shoe (EX),\$91.00
- A-012-021,Eastside,\$51.05
- A-012-999,Souvenir Airship Akron,\$20.50
- A-013-8UL,Auto Drink Gold Medal Beer,\$162.49
- A-015-011,Leisy,\$31.99
- A-015-012,Neuweilers,\$51.50
- A-015-035,Crown,\$113.99
- A-015-060,Chief Oshkosh,\$40.00
- A-015-065,Klinkert,\$121.49
- A-015-999,Anton Bottling Works Hannibal MO,\$46.84
- A-015-999,Coca-Cola (Fair),\$43.99
- A-015-999,Penn Cola,\$33.00
- A-017-008,Rainier (EX),\$128.50
- A-017-999,Coca-Cola In Bottles,\$73.51
- A-018-003,Star (EX),\$39.99
- A-020-027,Sebewaing,\$22.52
- A-020-043,Sunset,\$32.99
- A-020-8UL,Hensler's Beer,\$79.99
- A-020-999,Coca-Cola,\$59.89
- A-020-999,Henry's Newark N J,\$90.99
- A-021-001,Becks,\$18.55
- A-021-010,Ziegler,\$103.55
- A-021-010,Ziegler,\$52.98
- A-021-010,Ziegler,\$91.27
- A-021-015,Engesser,\$57.56
- A-021-015,Northern,\$56.05
- A-021-035,West Virginia (EX),\$20.51
- A-021-134,Blumer,\$15.00
- A-021-8UL,Burger-Beer Lexington KY,\$8.50
- A-021-999,Cheerwine,\$36.00
- A-021-999,Cheerwine,\$36.99
- A-021-999,Coca-Cola Schmidt's City Club Beer,\$116.49
- A-021-999,Hub City Bottling Pepsi Cola,\$52.00
- A-025-001,Hamms,\$39.38
- A-028-018,Columbia,\$13.35
- A-028-025,Lexington,\$39.77
- A-028-8UL,Dorr Malt & Supply,\$16.49
- A-029-007,Rainier,\$54.00
- A-029-076,Grossvater,\$11.10
- A-029-080,B&M Malt,\$26.52
- A-029-999,Dr Pepper,\$48.00
- A-029-999,Pepsi=Cola,\$46.00
- A-029-999,Whistle,\$29.01
- A-029-CAN,Cosgraves Ale,\$32.85
- A-032-001,Wooden Shoe,\$23.26
- A-035-003,Steger & Co,\$50.00
- A-035-005,Buffalo Var A,\$12.50
- A-035-005,Buffalo Var A,\$17.50
- A-035-005,Buffalo Var A,\$10.50
- A-035-005,Buffalo Var A,\$18.05
- A-035-013,Gilt Top,\$36.35
- A-035-033,Fink,\$43.77
- A-035-052,Virginia (Good),\$89.99
- A-035-999,Hermitage Saloon Wilbur WA,\$77.00
- A-035-999,O'Quirrh Bar Tooele UT,\$61.01
- A-035-CAN,Mountain Spring Beer,\$23.95
- A-042-006,Gold Top,\$21.50
- A-042-016,Port Washington (EX),\$67.66
- A-042-021,Fisher,\$157.55
- A-042-999,Beaver Dam Bottling,\$38.00
- A-043-999,Orange Kist,\$40.00
- A-044-003,Schmidt,\$60.89
- A-052-002,Canadian Malt,\$23.02
- A-077-001,Coors (Mint),\$14.51
- A-505-999,Clicquot Club,\$48.59
- A-999-999,(Elephant Head) 1933 Chicago,\$37.89
- A-999-999,Goodyear Aircraft,\$40.01
- B-001-001,Franklin,\$50.00
- B-001-013,Hoster,\$52.00
- B-001-022,Portsmouth (EX),\$89.05
- B-001-024,Rising Sun,\$23.51
- B-002-033,Heileman Var A,\$26.55
- B-002-042,Lone Star (Fair),\$1,009.05
- B-002-8UL,Philadelphia Brewing (EX),\$91.00
- B-002-999,Coca-Cola,\$58.66
- B-002-999,Coca-Cola,\$37.89
- B-002-999,Coca-Cola (Good),\$66.99
- B-005-8UL,Elk Brewing Red Top Beer Kittanning PA,\$66.05
- B-006-999,Chancellor Cigars,\$21.90
- B-009-001,Centennial,\$82.66
- B-013-006,Griesedieck Bros,\$12.50
- B-013-095,Jax,\$25.25
- B-013-8UL,Woolners Beverages,\$20.50
- B-013-999,Nifty (Marked Ster-ling),\$75.00
- B-014-106,Cerva,\$17.84
- B-014-114,Hoster,\$20.06
- B-014-143,Kiewel (Mint),\$212.50
- B-014-999,Coca-Cola / Same,\$29.89
- B-014-999,Coca-Cola Bethlehem PA,\$41.00
- B-014-999,Coca-Cola Gastonia NC,\$20.71
- B-015-004,Huebner,\$28.22
- B-018-026,Enterprise,\$10.02
- B-018-068,Schlitz (Fair),\$24.37
- B-018-159,Burkhardt,\$54.53
- B-018-286,Lion,\$18.00
- B-018-288,National,\$13.52
- B-018-390,Pilsner (Fair),\$20.00
- B-018-453,Kings Bohemian,\$22.40
- B-018-537,Uhl,\$51.00
- B-018-604,Olympia,\$37.66
- B-018-610,Betz,\$36.00
- B-018-637,North Pacific (Good),\$32.50
- B-018-8UL,Des Moines / Old Tavern,\$54.99
- B-018-8UL,Drink Conemaugh Beer,\$52.99
- B-018-999,Alma Bottling Works Alma KS,\$27.00
- B-018-999,Altamont Bottling Works,\$110.50
- B-018-999,Coca-Cola In Bottles (Made by Oscar Heyman NY),\$240.49
- B-018-999,Coca-Cola Oklahoma City,\$355.00
- B-018-999,Harris Lithia Spring Harris Springs SC,\$56.05
- B-018-999,V-Ray Spark Plug / (Pic of Spark Plug),\$60.90
- B-019-083,Ganser,\$138.05
- B-019-127,Hennepin,\$11.49
- B-019-163,Willow Springs,\$78.00
- B-021-013,Enterprise,\$15.02
- B-021-017,Flocks,\$15.50
- B-021-044,Kalamazoo,\$37.96
- B-021-100,Burkhardt,\$16.30
- B-021-106,Glennon Var B,\$20.50
- B-021-116,Klausmann,\$20.50
- B-021-126,Pfeiffer,\$42.77
- B-021-158,Fort Pitt,\$19.55
- B-021-163,Goetz,\$20.50
- B-021-299,Punxsutawney,\$37.67
- B-021-372,Fremont,\$38.51
- B-021-444,Hastings,\$24.99
- B-021-462,Akron,\$15.50
- B-021-8UL,Kiewel White Seal Beer,\$152.51
- B-021-8UL,Ruder,\$19.95
- B-022-004,Falstaff,\$18.95
- B-022-029,Huebner,\$22.50
- B-022-037,Liberty,\$39.50
- B-022-073,Reisch Var B,\$42.89
- B-022-107,Gluek,\$20.50
- B-022-107,Gluek,\$20.52
- B-023-007,Duquesne,\$32.50
- B-023-044,Potosi,\$41.00

## “Opener and eBay Trivia” (“BIN” Buy-It-Now & “DNMR” Did Not Meet Reserve)

B-023-058, South Fork, \$9.95	E-014-490, Edelbrau (BIN), \$25.00	Ale, \$24.99
B-023-169, Burkhardt, \$24.03	E-014-646, Goldcrest, \$12.50	H-011-008, Knapstein (EX), \$19.75
B-023-171, Cokins (Fair), \$51.00	E-014-652, Victor, \$32.99	I-011-168, Dakota Brewing, \$13.00
B-023-179, Cassville, \$102.50	E-014-999, Coca-Cola Pocatello ID, \$23.49	I-501-999, Coca-Cola, \$26.00
B-023-8UL, Reif's Special, \$31.32	E-017-013, Oneida (Good), \$79.99	K-001-004, Falstaff, \$36.00
B-023-999, Coca-Cola, \$32.17	E-019-003, Fitgers (Good), \$22.50	K-002-003, Jax, \$44.89
B-023-999, Coca-Cola (Spinner), \$240.49	E-020-001, Ortlieb, \$7.50	K-002-003, Jax, \$35.06
B-023-999, Coca-Cola (Spinner), \$89.88	E-022-8UL, Diamond Spring Brewery Lawrence, Mass., \$68.00	K-002-003, Jax, \$23.00
B-024-074, Walter, \$23.49	F-002-0023, Gluek, \$17.17	K-002-008, Pearl, \$103.55
B-024-078, Fort Pitt, \$29.99	F-002-010, Wacker, \$26.00	K-009-001, Blatz, \$404.05
B-024-999, Bob's Cola, \$11.61	F-002-023, Gluek (EX), \$31.00	L-001-002, Budweiser, \$14.99
B-024-999, Coca-Cola (EX), \$22.55	F-002-024, Gluek, \$41.00	L-001-005, Pabst (EX), \$46.98
B-024-999, Coca-Cola (Good), \$17.15	F-002-999, Coca-Cola Clarksdale MS, \$128.67	L-001-005, Pabst (EX), \$68.73
B-027-001, Miller Var A, \$28.01	F-002-999, Pepsi-Cola (Mint), \$85.99	L-001-006, Knickerbocker, \$18.00
B-030-999, Orange Crush Winston-Salem NC, \$52.00	F-005-8UL, Stone Malt 1111 Hemlock, \$13.37	L-001-006, Knickerbocker, \$38.00
B-033-002, Heileman Var A (EX), \$46.55	F-005-999, Mohr Bros Sodas Toledo OH, \$47.50	L-001-006, Knickerbocker, \$33.15
B-035-025, A1 Malt, \$8.00	F-006-8UL, Kentucky Malt, \$10.00	L-002-001, A-B Var A, \$36.00
B-042-015, Malt 55, \$15.50	F-007-CAN, O'Keefe's, \$23.62	L-002-001, A-B Var A, \$36.10
B-042-999, Chero-Cola, \$18.00	F-027-003, Old Heidelberg, \$21.59	L-002-001, A-B Var A, \$55.00
B-042-999, Coca-Cola (BIN), \$150.00	FBOC-035, Cathy Coed (EX), \$455.00	L-002-001, A-B Var A, \$40.99
B-064-001, Liebotschaner, \$36.00	FBOC-038, All American (EX) (Deckert Zinc), \$143.50	L-002-001, A-B Var A, \$27.00
C-001-003, Edelweiss (EX), \$57.99	FBOC-039, Sammy Samoa (Deckert Zinc), \$76.00	L-002-001, A-B Var A, \$29.00
C-001-CAN, Drewry Maltum 1877-1918, \$179.37	FBOC-042, Dinky Dan (On Ashtray) (BIN), \$200.00	L-002-001, A-B Var A, \$23.50
C-002-001, Phoenix (EX), \$38.50	FBOC-418, Winking Boy (EL), \$800.00	L-002-001, A-B Var A, \$33.50
C-005-001, Pablo (MIP), \$19.49	FBOC-418, Winking Boy (EX), \$1,500.00	L-002-001, A-B Var A, \$32.00
C-012-178, Wisconsin Co-Op, \$27.99	FBOC-418, Winking Boy, \$760.00	L-002-001, A-B Var A, \$32.00
C-013-120, Ziegler, \$32.00	FBOC-423, Bull Dog, \$98.00	L-002-001, A-B Var A, \$51.00
C-013-142, Lubeck, \$21.50	FBOC-423, Skull (Repro), \$10.50	L-002-001, A-B Var A, \$30.89
C-013-156, Two Rivers, \$17.91	FBOC-533, Mr Peanut (EX), \$128.50	L-002-001, A-B Var A, \$31.88
C-013-231, Windber, \$31.10	FBOC-537, Coyote (DNMR), \$537.00	L-002-002, A-B Malt, \$66.05
C-013-285, Ashland, \$50.00	FBOC-N-501, Der Fuhrer, \$99.99	L-002-002, A-B Malt, \$51.00
C-017-037, Largay, \$81.00	G-001-035, Liebert & Obert, \$15.50	L-002-999, H & A Eisner Newark NJ, \$305.00
C-023-001, Jax, \$19.03	G-001-999, Coca-Cola In Bottles, \$28.76	L-004-012, Gluek, \$25.10
CBO-HT-3, Washington Cigars, \$46.00	G-004-005, Johnson, \$11.50	L-004-028, Yankee, \$53.52
CBO-HT-9, Electric Cigars, \$48.00	G-005-999, Coca-Cola (Dated 1909), \$17.50	L-004-FAN, Ballantine (Fantasy), \$26.00
D-001-001, Budweiser Var B, \$33.21	G-006-003, Flecks, \$12.75	L-004-FAN, Blatz (Maybe #43) (Fantasy ???), \$24.50
D-001-001, Budweiser Var B, \$24.50	G-009-036, Kochs (EX), \$61.99	L-004-FAN, Falstaff (Maybe #72) (Fantasy ???), \$26.00
D-001-001, Budweiser Var B, \$14.55	G-009-100, Peoples (Mint), \$25.37	L-004-FAN, Goebel (Fantasy), \$26.99
D-006-002, Fehr, \$12.51	G-009-100, Peoples (Mint), \$25.18	L-004-FAN, Grain Belt (Fantasy), \$36.00
D-007-001, Peru, \$31.27	G-021-005, Peerless, \$22.52	L-004-FAN, Hamms (Maybe #54) (Fantasy ???), \$32.90
D-999-999, Cat's Paw (English), \$100.12	G-025-999, United Beverage Co, \$22.91	L-004-FAN, Jax, \$37.50
E-001-021, Fehr, \$27.55	G-040-999, Broadway Sports Palace, \$34.52	L-004-FAN, Schaefer, \$45.51
E-004-026, Derby, \$10.01	H-002-8UL, Sierra Brew, \$70.69	M-001-004, Haffenreffer (EX), \$224.55
E-004-101, American (EX), \$14.59	H-008-004, Esslinger, \$16.02	M-003-002, Bismarck, \$37.88
E-004-135, Rainier, \$52.50	H-008-007, Griesedieck, \$33.99	M-003-008, Erie, \$41.00
E-004-164, Dicks, \$14.51	H-008-007, Griesedieck, \$52.00	M-003-010, Chartier Valleys, \$67.77
E-004-286, Sunrise, \$37.00	H-008-008, Iroquois, \$18.75	M-003-010, Chartier Valleys, \$128.49
E-005-058, Pabst (EX), \$51.01	H-008-010, Narragansett, \$19.56	M-003-014, Piels (Red), \$21.50
E-005-119, Schlitz, \$35.36	H-008-999, Pepsi=Cola, \$36.00	M-003-020, American, \$33.41
E-005-127, Lone Star, \$21.70	H-008-999, Pepsi=Cola (EX), \$36.01	M-003-021, Croft, \$26.00
E-005-999, Coca-Cola Portland, \$28.01	H-010-999, Old Scotch Ginger Ale, \$24.99	M-003-023, F & S, \$192.50
E-005-999, Pepsi (Bottle) New Haven MO, \$40.00		M-003-035, Duquesne, \$293.50
E-006-081, Northern, \$23.03		M-003-040, Deer Park (Red), \$76.00
E-008-CAN, Capital Ale, \$21.01		M-003-040, Deer Park (Yellow) (Fair), \$51.00
E-009-022, Welz & Zerweck (BIN), \$70.00		M-003-999, 1933 Chicago WFs, \$16.05
E-009-070, Gund, \$20.65		M-003-999, 1933 Chicago WFs, \$15.55
E-014-248, Salinas, \$16.51		
E-014-448, Trenton, \$13.51		

**“Opener and eBay Trivia” (“BIN” Buy-It-Now & “DNMR” Did Not Meet Reserve)**

- M-003-999, Alleghany Metal, \$22.38
- M-003-999, Dr Pepper, \$89.76
- M-003-999, Moxie, \$30.41
- M-007-001, Duquesne, \$37.99
- M-015-001, Miller (MIB), \$67.00
- M-019-002, Miller, \$27.52
- M-019-002, Miller, \$51.05
- M-019-002, Miller (EX), \$12.50
- M-019-002, Miller (MIB), \$26.56
- M-019-003, Narragansett, \$20.50
- M-019-003, Narragansett, \$32.00
- M-019-003, Narragansett, \$23.50
- M-019-999, Anaconda (MIB), \$202.50
- M-019-999, Coca-Cola (Repro), \$40.00
- M-019-999, Coca-Cola (Repro), \$246.50
- M-019-999, Coca-Cola (Repro), \$127.50
- M-019-999, Coca-Cola (Repro), \$86.01
- M-019-999, Coca-Cola (Repro), \$71.47
- M-019-999, Pepsi=Cola, \$27.52
- M-020-001, Gutsch, \$60.59
- M-021-001, Rainier, \$37.60
- M-021-001, Rainier, \$30.89
- M-021-001, Rainier, \$40.99
- M-021-001, Rainier, \$33.50
- M-021-001, Rainier, \$59.00
- M-025-001, Lemp, \$51.01
- M-025-001, Lemp, \$54.99
- M-027-001, Lone Star (Mint), \$42.20
- M-029-999, Pepsi-Cola Chambersburg PA, \$18.27
- M-063-002, Sebewaing (MIP), \$39.00
- M-120-001, Jax, \$31.00
- N-002-001, Dixie, \$31.00
- N-004-002, Star (EX), \$83.76
- N-005-001, West End, \$100.00
- N-005-001, West End, \$127.55
- N-006-001, Lembeck & Betz (Blade Broke), \$113.50
- N-009-015, Blatz, \$22.05
- N-009-020, Ehret, \$14.50
- N-009-8UL, Schreihart Brewing Manitowoc WI, \$32.01
- N-009-999, Kalak 1939 N Y WFs (MIB), \$96.88
- N-009-999, Pepsi=Cola, \$32.00
- N-010-003, Koehler, \$22.05
- N-018-002, Budweiser, \$18.50
- N-020-003, Hoster (Good), \$52.05
- N-023-007, Strohs, \$8.23
- N-024-CAN, Lucky Lager BC Bud, \$112.83
- N-029-999, Coca-Cola (Missing Pencil), \$161.39
- N-029-999, Dr Pepper, \$47.88
- N-029-999, Dr Pepper, \$40.96
- N-032-001, Budweiser, \$16.49
- N-035-006, Grain Belt, \$22.60
- N-036-8UL, Schlitz Park Ice and Beverage, \$12.61
- N-040-025, Miller, \$23.49
- N-062-001, Schlitz & Coca-Cola, \$60.00
- N-062-001, Schlitz & Coca-Cola, \$39.99
- N-078-999, Chero-Cola, \$68.50
- N-079-001, Simon Pure, \$23.25
- N-100-999, Coca-Cola (EX), \$200.27
- N-501-999, Chero-Cola, \$56.00
- N-506-999, Coca-Cola, \$67.00
- N-506-999, Coca-Cola (MIB), \$115.49
- N-999-CAN, (Sim N-68) Kuntz Brewery LTD (EX), \$89.99
- O-002-001, Simon (EX), \$21.00
- O-002-006, Heileman Schlitz (EX), \$20.50
- O-002-999, Coca-Cola (Red Border/White Center) (EX), \$90.00
- O-002-999, Smile, \$24.00
- O-004-999, Coca-Cola, \$50.00
- O-004-999, Coca-Cola, \$42.61
- O-004-999, Drink Billy Boy, \$51.00
- O-004-999, Nu-Grape (MIB), \$36.00
- O-005-007, Lucky Lager, \$19.19
- O-005-015, Stegmaier (EX), \$27.61
- O-005-999, Frigidaire, \$76.00
- O-005-999, Nehi, \$90.92
- O-005-999, Pep, \$78.83
- O-005-999, Polar, \$80.00
- O-005-999, Red Rock Cola, \$40.00
- O-005-999, Roman Kola, \$179.11
- O-017-001, Rolling Rock (MIB), \$62.25
- O-017-001, Rolling Rock (MIB), \$43.33
- O-017-001, Rolling Rock (MIB), \$24.00
- O-017-001, Rolling Rock (Mint), \$57.23
- O-018-999, Coca-Cola (Marked Protector), \$209.49
- O-501-999, Coca-Cola (Swivel Hook), \$355.59
- O-502-999, Blank (MIB), \$62.80
- O-502-999, The Liquid, \$41.01
- O-502-999, The Liquid (Good), \$29.99
- O-505-999, Coca-Cola (MIB), \$187.50
- O-505-999, Coca-Cola (MIB), \$76.00
- O-505-999, Orange Crush, \$56.00
- O-505-999, Whistle, \$103.50
- O-505-999, Whistle, \$76.77
- O-505-999, Whistle, \$76.00
- O-505-999, Whistle, \$83.54
- O-509-999, Cleo Cola, \$26.00
- O-516-999, White Rock, \$117.50
- O-520-999, Kleeko-Club, \$22.49
- O-523-999, Coca-Cola, \$50.99
- O-523-999, Coca-Cola, \$41.00
- O-524-999, Casanova Beverage Hudson WI (MIP), \$47.99
- O-999-999, Flight Malted Milk (Large O-5 Starr), \$237.50
- O-999-CAN, (3 Hole O-5) Black Horse Ale, \$102.50
- O-999-CAN, (3 Hole O-5) Black Horse Ale, \$71.01
- P-001-001, A-B 1876 Patent Date, \$106.37
- P-002-008, Greenway, \$65.00
- P-002-8UL, Minneapolis Brewing Minneapolis Minn, \$136.49
- P-003-001, Pabst, \$126.48
- P-003-001, Pabst, \$149.50
- P-003-999, G H Mumm Champagne, \$154.50
- P-006-999, (Paper Label) Souvenir Catalina Island CA, \$131.93
- P-006-999, (Paper Label) Souvenir Cherokee Reservation NC, \$183.63
- P-006-999, (Paper Label) Souvenir Hollywood CA, \$102.50
- P-006-999, (Paper Label) Souvenir Sequoia National Park, \$330.00
- P-007-013, Bierbauer (Fair), \$76.01
- P-008-223, Miller (EX), \$25.49
- P-009-024, Rochester, \$76.00
- P-013-001, Schlitz, \$155.00
- P-014-013, Griesedieck Brothers, \$20.00
- P-014-022, Griesedieck, \$28.00
- P-014-8UL, Billings Brewing Old Fashion Beer, \$81.88
- P-016-001, Narragansett, \$38.99
- P-018-001, Jamestown (EX), \$116.49
- P-018-8UL, Los Angeles Brewing Co, \$159.98
- P-019-119, Schlitz Lager, \$8.00
- P-019-134, Schlitz, \$100.69
- P-019-8UL, Sterling Ale Henry Sawyer, \$40.01
- P-019-999, Jack Daniels Whiskey, \$78.77
- P-022-001, Blatz (EX), \$23.26
- P-022-005, Engesser (EX), \$179.26
- P-022-013, Foss-Schneider, \$31.10
- P-023-004, Waverly, \$42.85
- P-024-002, Anheuser-Busch, \$32.00
- P-025-003, A-B (EX) w/ Leather Case, \$430.50
- P-025-003, A-B Schrade (EX), \$379.77
- P-025-005, A-B w/ Leather Pouch (Fair Knife (VG), \$240.39
- P-026-007, Dick & Bros, \$120.50
- P-026-008, A-B (Steel Handles), \$638.00
- P-026-010, A-B w/ Leather Pouch (EX), \$1,323.00
- P-045-001, Ballantine, \$200.26
- P-051-8UL, Madison Brewing Ind / XXX Ale, \$22.00
- P-057-010, Blatz (EX), \$18.50
- P-060-007, Evans Hudson Ale, \$77.18
- P-067-001, Krueger, \$152.50
- P-073-001, A B C, \$105.50
- P-100-001, Rainier (Fair), \$433.00
- P-103-002, Maier & Zobelain, \$126.66
- P-109-999, The Dainty (EX), \$78.77
- P-130-001, Buffalo Co-Op, \$47.99
- P-133-002, Crawford Malt Chicago, \$47.99
- P-503-999, Clicquot Club, \$177.61
- R-003-005, Iroquois (Painted), \$47.88
- R-007-001, Hauenstein (EX), \$149.50
- R-008-001, Kaiers (DNMR), \$515.05

**“Opener and eBay Trivia” (“BIN” Buy-It-Now & “DNMR” Did Not Meet Reserve)**

Z-Corkscrew,Clicquot Club (Enamelled),\$179.61  
 Z-Corkscrew,Dated 1860 Ivory-T w/ Carved Sailing Ship,\$3,506.00  
 Z-Corkscrew,Double Handle Folding Iron Corkscrew (9" w/ No Marks),\$6,700.00  
 Z-Corkscrew,English 1795 Henshall Patent,\$2,412.79  
 Z-Corkscrew,English 1884 Wiers Double Patent,\$2,247.00  
 Z-Corkscrew,English 18thC 2-Pillar Wingnut,\$1,975.00  
 Z-Corkscrew,English 19thC Lund II King Screw w/ Spiral Springs (DNMR),\$5,000.00  
 Z-Corkscrew,English 19thC Rotary Eclipse,\$1,000.00  
 Z-Corkscrew,English 19thC Rotary Eclipse,\$1,294.21  
 Z-Corkscrew,English 19thC Weir 4377 Patent,\$1,200.00  
 Z-Corkscrew,Fake (Detroit Ladies Leg) From Belarus,\$855.99  
 Z-Corkscrew,Fake (English Royal Club) from Balarus,\$2,250.00  
 Z-Corkscrew,French 18thC Smoking Tool,\$3,000.00  
 Z-Corkscrew,French 18thC Smoking Tool,\$2,282.00  
 Z-Corkscrew,French 18thC Steel Cage,\$9,999.00  
 Z-Corkscrew,French 19thC Perille Subito,\$1,691.66  
 Z-Corkscrew,German 1882 Rasch 20803,\$1,526.11  
 Z-Corkscrew,German 1882 Rasch 20803,\$1,526.11  
 Z-Corkscrew,German 1883 Korn's Patent Knife 21125,\$3,102.00  
 Z-Corkscrew,German 1893 Wood-T Oehring Patent 13685,\$5,243.61  
 Z-Corkscrew,German 1899 Everts "Bonsa", \$837.00  
 Z-Corkscrew,German 19thC Celluloid Mermaid Waiter's Friend,\$760.00  
 Z-Corkscrew,German 19thC Folding Celluloid Lady,\$775.00  
 Z-Corkscrew,German 19thC Henckels Wood-T Rack & Pinion,\$1,804.00  
 Z-Corkscrew,German 19thC Wood-T Spring Patent 21751,\$2,672.22  
 Z-Corkscrew,German Roundlet Marked 14K,\$300.00  
 Z-Corkscrew,US 1867 Twigg Patent,\$1,333.73  
 Z-Corkscrew,US 1876 Williamson Power Cone,\$669.99  
 Z-Corkscrew,US 1882 Austin Patent,\$921.00

Z-Corkscrew,US 1883 Magic Corkscrew,\$113.50  
 Z-Corkscrew,US 1883 Strait Patent,\$380.00  
 Z-Corkscrew,US 1884 Steel-T Curly Patent,\$870.00  
 Z-Corkscrew,US 1888 Greely Corkpuller (Large),\$166.16  
 Z-Corkscrew,US 1892 Mumford Patent,\$227.50  
 Z-Corkscrew,US 1894 Puddefoot Detroit Leg Patent,\$799.95  
 Z-Corkscrew,US 1901 Wood-T Murphy Patent,\$158.05  
 Z-Corkscrew,US 1918 Parella Opener/Sardine Fork Patent,\$106.49  
 Z-Corkscrew,US 1918 Parella Opener/Sardine Fork Patent,\$103.50  
 Z-Corkscrew,US 1932 Bridgewater Patent,\$350.00  
 Z-Corkscrew,US 1948 Corkmaster (Small Version),\$449.00  
 Z-Corkscrew,US 20thC Blackington Sterling Golf Bag,\$185.00  
 Z-Corkscrew,US Syroco Clown (EX),\$960.00

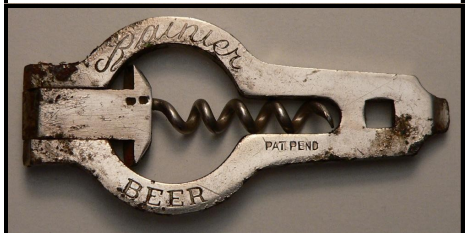
**“Holy Grails”**

Its time to come up with a list of “Fantasy” openers that may or may not exist but have been talked about or supposedly seen over the years or have known patents but no example has been seen. I will offer the following list and anyone can send me additions. I figured “Holy Grails” would be an appropriate name for the list.

- 1) A-9 Baseball Player in a “Batting Position” not “Pitching”, supposedly seen at Brimfield years ago?
- 2) L-2 Anheuser-Busch bottle corkscrew with an add for the 1904 St Louis World's Fair, supposedly seen by one of Ray Braeuner's pickers?
- 3) E-4-25 Coors “Round Head”, supposedly seen by Bill McKenzie?
- 4) A-13 Car with Coca-Cola ad, Coca-Cola has been on just about every other major figure, but never seen on a Car?

**Getting 2007 Off to a Good Start**

It was Thursday afternoon Jan, 4th and I had just come home from work and decided to check new opener listings. The third one I looked at and backed out and thought, wait a minute something unusual was in the group of 5 junk openers. I looked back and sure enough there was a P-100 Rainier folding corkscrew. The seller was asking \$9.99 and for once I thought I would make an offer and see what would happen. It seems like it happens to me a lot when someone jumps in and gets the seller to stop the auction or the other person gets a Buy-It-Now. The group had just been listed so I thought maybe I could catch the seller on their computer. I sent an offer of \$30.00 for the lot and within 10 minutes she responded back she would take the offer and had added a “But-It-Now” of \$30.00. I was pretty nervous jumping back to the listing and quickly completed the deal. She wanted to send the group by snail mail but I paid for priority and had the precious P-100 by Monday. The 2007 year had started wonderfully. The P-100 was in rough shape but after a double cleaning of acid and buffing, it looks pretty nice. Below are before and after pictures.





**JFO & Other Clubs/Conventions (Newsletter Name in Italics)**

**American Breweriana Association (ABA):** *American Breweriana Journal* (bi-monthly) on breweriana collecting. Dues \$25.00/year. ABA, PO Box 595767, Fort Gratiot MI 48059-5767

**2007 Jun 12-16 – 26th Annual ABA Convention – Holiday Inn Portland Airport Portland OR– ABA Members Only (Saturday Public Show).** Contact Jean Tieg, E-Mail jeannelt@aol.com

**Canadian Brewerianist:** *The Canadian Brewerianist* (10/year) on Canadian breweriana collecting. Dues \$25.00/year (US Funds). Loren Newman, 2978 Lakeview Trail, Bright's Grove, Ontario, CANADA, N0N 1C0

**2007 Aug 8-11 – Canadian Brewerianist Annual Convention – Fernie BC – All Breweriana Collectors Welcomed.** Contact Larry Sherk, E-Mail larrysherk@hotmail.com, (416) 465-3386

**Canadian Corkscrew Collectors Club (CCCC):** *The Quarterly Worme* (quarterly) on corkscrew collecting. Dues \$30.00/year. Milt Becker, PO Box 9863, Englewood NJ 07631

**East Coast Breweriana Association (ECBA):** *The Keg* (quarterly) on breweriana collecting. Dues \$25.00/year. ECBA, PO Box 1392, Doylestown PA 18901

**2007 Jul 11-14 – 35th Annual ECBA Convention – Sheraton Park Ridge Hotel King of Prussia PA – ECBA Members Only (Saturday Public Show).** Contact Larry Handy, E-Mail ohhugo1@aol.com

**Figural Bottle Opener Club (FBOC):** *The Opener* (quarterly) on cast iron openers. Color guide book: \$23.85/Non Members or \$18.85/Members. Dues \$20.00/year. Lyle Moreland, 864 Jeanette Ave, Baltimore MD 21222

**Annual FBOC Convention Reading PA (June of Each Year).** Contact Sandra Emme, E-Mail emmyaward@yahoo.com

**Just For Openers (JFO):** *Just For Openers* (quarterly) on all areas of opener collecting (with an auction each issue). Dues \$20.00/year. John Stanley, PO Box 64, Chapel Hill NC 27514-0064

**2007 Apr 25-29 – 29th Annual Just For Openers Convention – Holiday Inn Harrisburg, New Cumberland PA – All Opener / Corkscrew / Breweriana Collectors Welcomed.** Contact John Stanley, E-Mail jfo@mindspring.com

**National Association Breweriana Advertising (NABA):** *The Breweriana Collector* (quarterly) on breweriana collecting. Dues \$25.00/year. NABA, PO Box 64, Chapel Hill NC 27514-0064

**2007 Aug 1-5 – 36th Annual NABA Convention – Doubletree Inn Bay City MI – NABA Members Only (Saturday Public Show).** Contact John Stanley, E-Mail naba@mindspring.com

**SHOWS (Good Sources for Openers & Corkscrews)**

**2007 Sep 13-15 – 25th Annual Midwest Breweriana Show – Mid America Center Council Bluffs IA – JFO Members Welcomed.** Contact John Mlady (402) 345-7909 or Bill Baburek, (888) 569-7924 E-Mail bjbaburek@cox.net

**2008 Feb 13-17 – 29th Annual Blue & Gray Breweriana Show – Ramada Inn Holidrome Fredricksburg VA – All JFO Members Welcomed.** Contact: John Fisher, PO Box 953, Benedict MD 20612-0953, (301) 274-3340

**2008 Mar 9 – Annual Spring Breweriana & Beer Can Show – Sokol Hall 2234 S 13th St Omaha NE – 9AM to 3PM (8' Tables \$18 Each). Hospitality Room (Sat Evening Comfort Inn I-80 & 13th St Exit).** Contact John Mlady (402) 345-7909

**WANTED (Please remember there is no charge for Ads)**

**Schlitz Openers: A-20-52,42,35,51, A-21-58,8,115,79, A-23-7, A-35-30,45. Buy or possibly Trade.** Mike Krejci, W19103 Lake St, Aniwa WI 54408, (715) 449-3523, Email pigpen1952@juno.com

**Adler Brau Openers: B-18-491, E-4-262, H-11-1, I-17-259, N-83-1. D-9 Openers: #3, 5,9,10, 12, 14, 15, 16, 17, 18, 19. Also Looking for H-7 & H-11 Openers.** Russ Adler, W11307 Cty Rd V, Lodi WI 53555-9628, (608) 592-5766

**Starr Openers to trade, send for current list.** Don Stinson, PO Box 105, 143 Haskins Point Road, Seeley's Bay, Ontario Canada, K0H 2N0, (613) 387-3100, Email rideaubreeze@bellnet.ca

**I-7 Vaughan's Quick & Easy, I-7 45,82,46,79,84,78,54,30,55, 57,81,83.** Also any Variations, Non-Beer/Generics. Have Traders/Cash. **Also H-3-34 Continental Can.** Jim Pokrywka, 279 Pearl St, Seymour CT 06483, Email jimpokrywka@sbcglobal.net

**Wisconsin Brewery Openers: Knapstein, Hortonville, Princeton, Hochgreve, Bleser, Shawano & Rahr; esp A-17-27 Rahr.** Dan Mayville, E7446 County Road H, Fremont WI 54940-9747

**E-14s 3,34,35,38,41,44,61,78,83,95,96,98,99.** Darwin Miller, 32 La Canada Way, Hot Spring Village AR, 71909, (501) 922-1615

**B-2s #21 Fresno Local, #22 Haenle, #29 Gold Nugget, #37 Flecks, #39 R. I. B., #40 Anheuser.** Bill Arber, 11162 Broadway St, Alden NY 14004-9515, (716)681-4833, Email wrabra@aol.com

**C-39, D-12, D-24, E-22, M-52, M-68, M-103, O-511, all types.** Will buy or trade. Mark Woodard, 1126 Riverboat Court, Annapolis MD 21409, (443) 756-2815, Email mark.woodard@nasa.gov

**JFO Convention Display Contests**  
**2 Contests 1) Regular 2) Best In Show**  
**1) Regular Display Contest**  
**(Any Group of Openers or Corkscrews)**  
**1st, 2nd & 3rd Places (Awarded)**  
**2) "Best In Show Bill McKenzie Award"**  
**One Opener or Corkscrew: Beer/Non-Beer**  
**(Note Just One Winner for Best In Show)**

**WANTED (Please remember there is no charge for Ads)**

**Golden Glow Openers: A-1-9, B-23-149, E-14-787, O-4-22 & A-12-12 Grace Bros. Rainier Openers: B-3-5, B-19-135, B-21-130, E-9-80, F-21-2, N-11-5 & 15, P-19-7, P-53-6, P-54-18. P-85s: 3,4,5,11,14.** Also any Breweriana from Rainier (Seattle WA, LA CA, SF CA), Golden West (Oakland CA) & Port Townsend (WA). Buy/Trade. John Cartwright, 1548 Via Arroyo, Paso Robles CA 93446, (805) 226-9270

**A-3-19 Stone Malt Akron.** Great Trades or Buy. Jeb Burruss, 318 Lost Oak Dr, Canyon Lake TX 78133, (830) 899-7241

**A-9s: 26 Penn, 46 Tivoli, 29 Waldorf, B-9-2 Salinas, B-9-10 Ambrosia, B-7 (Beer), B-22 (Beer), B-31-11 Bellingham Bay, C-21-6 Grand Rapids, D-16-1 New Kentucky, E-17s: 1 American, 9 Everett, 12 Lion, G-1s: 31 Griesedieck Bros, 68 Glennon, 69 Leidiger 3-V Bev, 70 Fox Lake, G-5s: 2,9,18,22,23,28,29,33,39,40,45,46,48,50,51,52 H-1s: 8,12,21,26,27,34,35,39,42,44,51, O-1-2 Leidigers, O-505 Lime Cola & O-505 Saegertown** John Stanley, PO Box 64, Chapel Hill NC 27514, (919) 419-1546, jfo@mindspring.com

**A-17 "Wilber Brewery" & P-8 Corkscrew "Omaha Brewing Association" (EX Cond. Only).** Will purchase outright. John Mlady, 1506 S 25th St, Omaha NE 68105-2611, (402) 345-7909

**A-22-1 Ballantine, Openers with the word Saloon, Mexican A, B & D style Openers.** Great Trades Available. Jack Ford, 5351 Boyd Ave, Oakland CA 94618, (510) 655-5393

**A-43-Dixie Beer.** (Buying). Marc Benjamin, 167 Nixon Beach Rd, Edenton NC 27932, (919) 482-2099

**B-24-95 Flecks Beverages.** Al Fleckenstein, 2445 NW Raleigh St, Portland OR 97210, (503) 223-0123, flecks@spiritone.com

**B-45, B-66, I-7, P-72, P-100, R-14 types with a Corkscrew (Beer/Non-Beer) & Silver Top Beer Openers.** Herb Danziger, 550 Cherry Ct, Birmingham MI 48009-1459, (810) 646-9470

**Bond and Lillard Openers (would like to buy). Have A-29, would like any others. Lillard is a family name.** George Love, 4301 Forest Plaza Dr, Hixson TN 37343, (423) 877-6006

**C-49-11 Bud Fort Collins, C-49-21 Coors Original, C-49-22 Flying Dog, C-49-33 Moose, C-49-34 Rock Bottom,** Harold Queen, 1001 Centre Ave, Jim Thorpe PA 18229, (717) 325-2612

**"E"s! Have Trade List (All Types) or Will Buy. Top 12 List: E-14-832 Uneeda, E-7-77 Lima, E-2-21 Park, E-3-30 Derby, E-4-207 Yosemite, E-4-244 Sequoia, E-4-245/300 Trainer, E-16-11 Ganser, E-17-9 Everett, E-17-7 I S D, E-6-213 Kips Bay.** Larry Moter, 10149 Michaels Rd, Woodford VA 22580, (804) 448-3928 E-Mail accneca@aol.com

**"E" Type Openers Wanted. Will Trade my "C", "E" and "I" Types.** Send trade list and I'll send my list. Ralph Tewksbury, 84 Wildwood Dr, Parkersburg WV 26101 (304) 863-3627

**G-4s: #10 Jung, #13 Point, #15 520, #18 Southern, #20 Walters, also "I-5"s, "E-14"s, "B-24"s, "G-1"s. Send for Want List.** John Patton, 9224 Sugarloaf Dr, Redding CA 96001

**"I"s to Complete my collection. Please send me a list of your extra "I"s w/ prices. I will respond!** Tom Gormally, 22555 Cardiff Dr, Santa Clarita CA 91350, (661) 291-1392, Email tomphyllis@ca.rr.com

**I-2s 1 Atlas, 2 Beverwyck, 3 Drewrys, 7 Mitchell, J-8-13 Ballantine, J-8-14 DuBois. Cash/Trade.** Ben Hoffman, 213 Simmons Rd, Perkiomenville PA 18704, (610) 287-8243 or Email benbey@netcarrier.com

**I-7-46 Berghoff: \$10 for Photocopy: Does It Exist???** Hale Milano, 506 Springhouse Rd, Camp Hill PA 17011-1454, (717) 737-5067

**J-6s: 2-4-18-19-21-23-25-28-29-36-37-39-43-46-47, Will Pay \$4 Each plus Postage.** Ollie Hibbeler, 535 Villa Piazza Ct, O'Fallon MO 63366

**Atlas Prager Openers: A-21-46, A-21-69, B-24-58, B-24-103, B-28-2, E-5-70, E-7-1, E-8-32, E-14-755, E-14-657, E-14-719, F-4-36, H-2-166, N-10-6, N-10-7, O-8-3, O-8-17, P-66-4.** Dave Lendy, 1927 Allen Dr, Geneva IL 60134, (630) 208-6950

**Bottle Shaped and/or Openers with Bottle on them. Especially want M-1-7 King's Chremal & M-2-5 Bartholomay!** Gary Deachman, PO Box 438, North Woodstock NH 03262

**Chester PA Openers: B-18-192 Peerless, B-21-557 Haser, C-12-71 Chester, P-7-46 Stoeckle, and A-17-14 & A-43-3 Soda Openers with ad for "Penn Brand".** Joseph Knapp, 211-A Berbro Ave, Upper Darby PA 19082, (610) 352-5055

**Cigar Box Openers (CBOs)-Any Unusual-Write with Details** Ken Hoesch, PO Box 299, Zeeland MI 49464-0299

**Corkscrews-Cork Pullers-Syroco (esp Golden Knight & Clown)-Early US Patents-Anything Unusual.** Have Corkscrews to Trade or Buy. Please send description to Paul Luchsinger, 2815 King Rook Ct, Williamsburg VA 23185, (757) 345-3984, Email paulcork@cox.net

**Corkscrews & Tin Can Openers: Beer Openers for Trade.** Joe Young, 36 S Weston Ave, Elgin IL (847) 695-0108

**Corkscrews, Beer Advertising Letter Openers, & Postcards depicting Corkscrews.** Please send description, photo, sketch, photocopy, or tracing of what you have and advise price wanted. Don Bull, PO Box 596, Wirtz VA 24184, (540) 721-1128, E-Mail corkscrew@bullworks.net

**Corkscrews: Esp. Walker's "Waiters & Hallboys" and old Williamson wire shafted "T"s with attachments to wood handle (such as brushes/wire cutters).** John Vlossak, 1044 East Eldorado St, Appleton WI 54911, (414) 739-2789

**Figural Corkscrews and any WASHINGTON D.C. Openers and/or Corkscrews.** Sandra Emme, PO Box 1454, Upper Marlboro MD 20773, (301) 627-8207

**Hartford, Connecticut Openers & Breweriana Wanted, esp. E-8-61 Fischer & P-17-4 Columbia. Also general CT and New England Beer Openers.** Edward Johnson, 1300 Poquonock Ave, Windsor CT 06095, Email johnsoned1777@hotmail.com

Openers from **Jamestown Brewing Co, Kuhn's Beer, Chautauqua Brew, Monessen, PA, Independent Brewing Co, Schaefer, & all Cleveland Beers.** Ed Schaefer, PO Box 149, Maple Springs NY 14756, Email eschaeferbeer@juno.com

**Joliet IL Openers: Citizens: B-14-97, C-17-69, E-1-32, E-3-12, E-4-175, K-5-6, O-10-1, P-121-1, Porter: A-17-24, B-18-594,618, B-21-199, F-6-9, Sehrings: B-21-561, G-9-39.** John Bitterman, jebitter@aol.com

**Minnesota Openers: A-1-73, A-21,63,77,128, A-29-22, A-33-5, A-45-1, B-7-3, B-13-12, B-18-330, B-21-322, O-1-1, O-2-14, P-7-13, P-146-1.** Pat Stambaugh, 718 S Lakeshore Dr, Lake City MN 55401

**Montana & Idaho Beer/Brewery Openers & Breweriana. Also H-8 & L-1 Openers to complete collection.** Steve Armstrong, PO Box 741, Kamiah ID 83536, sunset@cybrquest.com

**New York Openers: E-4-345 Koch, G-1-67 Hupfel. Will Buy/Trade.** Mark Barren, 6141 Tachi Dr., Newfane NY 14108-9517, (716) 778-9724

**Pinney Beverage Items Wanted: Pens & Pencils, Bottle & Can Openers, Any item imprinted with Pinney Beverage Company, Salt Lake City, Utah.** Dave Pinney, 1766 Red Barn Road, Encinitas CA 92024, (760) 753-8151, Email davecent@tmisnet.com

**SELLING (Please remember there is no charge for Ads)**

JFO Set Back Issues: 1979-1993 \$30 or 1994-2006 (\$30) (US Shipping Only) John Stanley, PO Box 64, Chapel Hill NC 27514

"American Breweries II": by Dale Van Wieren. Over 18,000 entries for nearly 8,000 brewing firms, tracing names, addresses, and dates of operation. (\$20 Priority Mail). John Stanley, PO Box 64, Chapel Hill NC 27514

2007 Handbook of United States Beer Advertising Openers and Corkscrews (contains 16,000 Listings & pictures 1100 Types (Black & White Copies)). Print from the JFO website at www.just-for-openers.org

2005 Inventory of Canadian Beer Advertising Openers & Corkscrews (contains 2,000 Listings & drawings for 250 Types (Black & White Copies)). \$24 US sent book rate. George Vine, 219 Murray, Greenfield Park, Quebec, Canada J4V 1N5

"Just For Openers" "A Guide to Beer, Soda, & Other Openers" by Donald A. Bull & John R. Stanley, 160 Pages, 380 Color Pictures, \$26.95 plus \$3.95 shipping (US Only). Bullworks, PO Box 596, Wirtz VA 24184

"Soda Advertising Openers" by Donald A. Bull & John R. Stanley, 160 Pages, Over 275 Color Pictures & 2500 Listings, \$26.95 plus \$3.95 shipping (US Only). Bullworks, PO Box 596, Wirtz VA 24184

"Beer Advertising: Knives, Letter Openers, Ice Picks, Cigar Cutters and More" by Donald A. Bull, 180 Pages, Over 500 Color Pictures, \$26.95 plus \$3.95 shipping (US Only). Bullworks, PO Box 596, Wirtz VA 24184

"The Ultimate Corkscrew Book" by Donald A. Bull, Hardcover Book Weighs 5 Lbs, 744 Color Photographs, 3746 Corkscrews with Values, \$75.00 plus \$8.80 shipping (US Only). Bullworks, PO Box 596, Wirtz VA 24184

"Bull's Pocket Guide to Corkscrews" by Donald A. Bull, 190 Pages, Over 200 Color Photographs, 942 Corkscrews with Values, \$18.00 plus \$3.95 shipping (US Only). Bullworks, PO Box 596, Wirtz VA 24184

"Boxes Full of Corkscrews" by Donald A. Bull, 236 Pages, Over 836 Color Photographs, 95% New Information with Values, \$47.95 plus \$7.70 shipping (US Only). Bullworks, PO Box 596, Wirtz VA 24184

"ANRI Woodcarvings: Bottle Stoppers, Corkscrews, Nutcrackers, Toothpick Holders, Smoking Accessories and More" by Philly Rains and Donald A. Bull, 272 Pages, Over 800 Color Photographs picturing more than 2500 ANRI Carvings with detailed information, \$62.95 plus \$7.70 shipping (US Only). Bullworks, PO Box 596, Wirtz VA 24184

"Hometown Beer - A History of Kansas City's Breweries" by H James Maxwell & Bob Sullivan Jr, Hardback w/ 300 Pages, 585 Pictures (352 Color), \$39.95 Postpaid (US). H. James Maxwell, 1050 West Blue Ridge Blvd, Kansas City MO 64145-1216

"Figural Bottle Openers Identification Guide" by FBOC Club, 148 Pages, 67 Color Pages, with Rarity Guide, \$20.00 plus \$3.85 priority mail shipping (US Only). Lyle Moreland, 864 Jeanette Ave, Baltimore MD 21222

**Just For Openers  
"Auction Guidelines"**

**Please Note: Fee of 20%  
Charged on Consignments**

This auction is a service to members of JFO. Submit consignments by sending a graded inventory list. Reasonable minimum bids can be established for good items. Any openers submitted for the auction should have a minimum value of \$3.00. Money realized will be sent 4 to 5 weeks after closing date.

**Write/E-Mail First Before  
Sending Consignment Items.**

**When Bidding Please!  
list Lot Number & Description  
with each bid.  
Remember! enter your name on  
each auction page &  
keep a copy.**

**MAIL/E-MAIL BID SHEETS  
EARLY! DO NOT WAIT!!!**

**AUCTION BID GUIDELINES**

Send Bids To: John Stanley  
PO Box 64 Chapel Hill NC 27514  
*Auction Rules*

*(Note: No Phone Bidding)*

- 1) \$1.00 Minimum Bid on Each Lot, Only 1 Bid per Lot Allowed
- 2) Openers Sold to Highest Bidder (Identical Bids: Earliest Post-

- marked Bid Wins)
- 3) 7 Days to Return Openers if Not Satisfied, Shipping and Handling Extra
- 4) Openers Shipped Upon Payment (Please Pay within 7 Days of receiving Invoice) (Please make checks payable to: John Stanley)
- 5) Results Shown Next JFO Issue (Winning Bidders receive Results with Invoice)

Grading (G):

1-Poor 2-Fair 4-Good 6-Very Good 8-Excellent 9/10-Near Mint to Mint

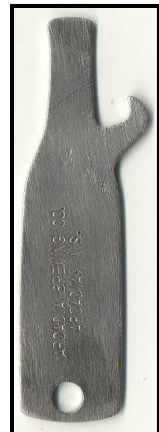
(UL-Unlisted in Latest Handbook (Full Wording Will Be Given) 999-Non USA Beer)

JFO # & Key Words (Brewery or Beer Name from Full Description) from Latest Handbook of United States Beer Advertising Openers and Corkscrews

**Results of JFO Auction Closing February 28, 2007 Thanks to all 30 Bidders**

1	8.31	63	0.94	125	1.75	187	0.94	249	3.19	311	2.00
2	63.00	64	2.00	126	1.75	188	2.00	250	3.21	312	2.00
3	61.00	65	1.77	127	0.94	189	0.94	251	4.00	313	2.50
4	0.00	66	5.00	128	4.81	190	1.27	252	0.94	314	2.50
5	14.77	67	1.78	129	10.95	191	3.11	253	0.94	315	2.50
6	8.00	68	1.01	130	21.68	192	0.94	254	0.94	316	2.50
7	15.01	69	0.94	131	0.94	193	0.94	255	4.00	317	2.50
8	15.01	70	1.75	132	2.02	194	2.00	256	8.73	318	2.50
9	19.01	71	5.00	133	0.94	195	1.27	257	7.00	319	15.00
10	304.05	72	5.00	134	5.77	196	0.94	258	0.94	320	2.50
11	36.15	73	0.94	135	7.67	197	0.94	259	10.00	321	2.50
12	43.00	74	0.94	136	0.94	198	25.05	260	0.00	322	15.00
13	0.00	75	5.00	137	0.94	199	6.05	261	0.00	323	2.00
14	10.00	76	5.00	138	0.94	200	3.68	262	37.50	324	15.00
15	10.00	77	1.77	139	0.94	201	1.05	263	9.99	325	2.50
16	10.00	78	2.75	140	0.94	202	0.94	264	0.94	326	2.50
17	3.66	79	1.01	141	7.67	203	1.05	265	5.55	327	5.16
18	10.00	80	0.94	142	7.67	204	1.00	266	0.94	328	15.00
19	3.66	81	2.75	143	0.94	205	2.79	267	3.00	329	2.50
20	10.00	82	1.88	144	2.77	206	7.05	268	3.68	330	2.00
21	8.08	83	5.00	145	0.94	207	0.94	269	3.00	331	15.00
22	8.08	84	3.68	146	2.77	208	3.11	270	5.00	332	1.65
23	0.00	85	1.05	147	5.00	209	3.11	271	0.94	333	4.73
24	87.50	86	0.94	148	1.02	210	0.94	272	0.94	334	3.07
25	12.00	87	1.05	149	6.50	211	1.00	273	8.68	335	15.00
26	10.00	88	1.77	150	5.00	212	3.11	274	5.00	336	10.65
27	32.51	89	1.78	151	2.04	213	1.00	275	8.68	337	5.15
28	20.01	90	1.78	152	0.94	214	0.94	276	1.78	338	0.94
29	108.08	91	0.94	153	1.68	215	0.94	277	0.94		
30	76.06	92	0.00	154	0.94	216	0.94	278	0.94		
31	5.01	93	4.01	155	1.05	217	3.11	279	8.73		
32	20.00	94	4.01	156	3.11	218	6.05	280	21.95		
33	3.66	95	0.94	157	1.38	219	10.68	281	7.65		
34	20.00	96	1.77	158	0.94	220	2.02	282	30.55		
35	52.02	97	5.96	159	0.94	221	2.02	283	30.55		
36	0.00	98	7.96	160	5.00	222	1.65	284	0.94		
37	40.00	99	4.96	161	0.94	223	2.01	285	3.15		
38	5.01	100	5.96	162	0.94	224	7.67	286	0.94		
39	56.06	101	4.00	163	2.00	225	0.00	287	2.77		
40	7.51	102	3.00	164	2.00	226	0.00	288	2.77		
41	22.10	103	2.25	165	3.50	227	0.94	289	11.23		
42	10.51	104	4.96	166	0.94	228	2.01	290	0.94		
43	31.00	105	2.00	167	6.05	229	3.14	291	6.71		
44	36.00	106	0.94	168	0.94	230	4.77	292	4.15		
45	0.00	107	2.65	169	1.05	231	3.03	293	41.77		
46	12.76	108	15.00	170	0.94	232	0.94	294	0.00		
47	11.51	109	2.01	171	0.94	233	6.13	295	55.00		
48	0.00	110	2.01	172	7.67	234	3.00	296	10.11		
49	36.00	111	0.94	173	2.06	235	2.15	297	10.11		
50	36.00	112	1.88	174	1.88	236	0.94	298	3.91		
51	0.00	113	2.77	175	0.94	237	0.94	299	2.98		
52	36.00	114	1.01	176	1.05	238	11.00	300	1.99		
53	21.10	115	1.01	177	2.00	239	4.04	301	1.99		
54	56.06	116	2.77	178	2.00	240	3.00	302	7.77		
55	36.00	117	1.22	179	0.94	241	4.14	303	41.77		
56	8.51	118	1.22	180	0.94	242	15.00	304	20.00		
57	20.50	119	2.77	181	0.94	243	3.00	305	3.82		
58	4.01	120	0.94	182	0.94	244	15.00	306	5.10		
59	88.08	121	5.50	183	3.50	245	4.77	307	5.00		
60	1.77	122	2.77	184	0.94	246	2.15	308	5.00		
61	4.68	123	0.94	185	1.88	247	5.00	309	1.65		
62	1.77	124	0.94	186	0.94	248	3.19	310	0.00		

If anyone has some good openers they would like to run through the JFO Auction please let me know. I am looking for "A"s, "B"s and "E"s especially.



**A-50 in April JFO Auction.**

JFO Auction Closing May 30, 2007: Name & #:

1, _____, A-004-999, Shogo Lithia Soda Water Lincoln, Neb., NE, 6	36, _____, B-018-045, Manitowoc, WI, 6	92, _____, C-014-039, Brooklyn, NY, 10
2, _____, A-012-999, Open Air Market 24th St. Marys Omaha, NE, 6	37, _____, B-018-190, Home (Min \$30), IN, 8	93, _____, C-015-005, Iron , PA, 8
3, _____, A-021-110, Daniels, TN, 10	38, _____, B-018-332, Hoster (Min \$40), OH, 8	94, _____, C-015-010, Schaefer, NY, 10
4, _____, A-021-999, Blue Moon Bar Fine Liquors 428 Wabasha St Paul, Minn., MN, 10	39, _____, B-018-466, Schlitz (Min \$40), PA, 6	95, _____, C-015-019, Esslinger, PA, 10
5, _____, A-021-999, Race Street Wine 1536 Race St Cheapest In Town Beer-Wine-Liquors Parkway 8998, 6	40, _____, B-018-646, Kamm & Schellinger (Min \$30), IN, 6	96, _____, C-016-008, Rubsam & Horrmann, NY, 10
6, _____, A-023-999, BAYVIEW SERVICE 1718 W. FRONT ASHLAND, WIS., WI, 10	41, _____, B-018-677, Evans, NY, 8	97, _____, C-016-009, Schaefer, NY, 8
7, _____, A-023-999, Curley's Tavern Minocqua, Wis. Phone 34, WI, 10	42, _____, B-018-698, Lemp (Min \$40), MO, 6	98, _____, C-016-010, Schaefer, NY, 8
8, _____, A-023-999, Geo. Sorensen's Phcy. Ra. 9769 9501 Rainier, 10	43, _____, B-019-101, Lange, MO, 1	99, _____, C-016-018, Iroquois, NY, 10
9, _____, A-023-999, Horseshoe Liquor Store Fairbanks, AK, 10	44, _____, B-019-127, Hennepin, MN, 6	100, _____, C-017-005, Fox Deluxe, IL, 6
10, _____, A-023-999, PAUL ALLEN AUTOS & SUPPLIES PH. 4644 LEX., KY. (NO RIB), KY, 10	45, _____, B-019-169, Lima (Min \$25), OH, 10	101, _____, C-017-011, Iroquois, NY, 4
11, _____, A-023-999, SANDLER'S LIQUORS 1740 EAST SEVENTH PHONE 600-41, 10	46, _____, B-021-149, Chattanooga (Min \$20), TN, 6	102, _____, C-017-026, Schaefer, NY, 8
12, _____, A-023-999, Spokane Machinery Co. E. 3626 Trent (No Rib), WA, 10	47, _____, B-021-205, Rose Bud (Min \$30), SD, 10	103, _____, C-017-999, Cascade Ginger Ale-Sparkling Water (Scroll Design), 10
13, _____, A-023-999, Tatum's Candy-Cake Mfg. B'Ham 9, "Homewood", 10	48, _____, B-021-313, Virginia (Min \$50), VA, 4	104, _____, C-018-002, Esslinger, PA, 10
14, _____, A-023-999, TERMINAL TAVERN SHUFFLEBOARD 8334-15TH N.W., 10	49, _____, B-021-436, Virginia (Min \$35), MN, 6	105, _____, C-018-004, Independent, WI, 6
15, _____, A-023-999, TOM'S BAR BERTHOLD, N. DAK. T.C. STREDWICK, Nd, 10	50, _____, B-021-465, Gambrinus (Min \$40), OH, 8	106, _____, C-018-005, Iroquois , NY, 10
16, _____, A-023-999, Weigel Beverage Marshfield, Wis. Phone 597-R, WI, 10	51, _____, B-021-529, Michel, WI, 6	107, _____, C-018-006, Knickerbocker, NY, 8
17, _____, A-023-999, WORL'S LIQUOR & TAXI-PHONE 9 CAMBRIDGE CITY, 10	52, _____, B-021-588, Packham (Min \$30), MD, 8	108, _____, C-018-999, Quality Atlantic Beverages Port Chester, N. Y., NY, 8
18, _____, A-026-003, Schoenhofen, IL, 4	53, _____, B-021-599, Meadville (Min \$35), PA, 4	109, _____, C-019-002, Fort Pitt Var A, PA, 10
19, _____, A-029-999, Ho-Mestic Distributing Corp. 2000-12 Freeman Ave. / Wholesale Retail Case-Beer-Draught We Deliver to the Home, 8	54, _____, B-021-999, E A Feltman Co. Cigars Richmond, Ind., IN, 8	110, _____, C-019-007, Rochester Var B, NY, 10
20, _____, A-032-003, Wooden Shoe / 1986, FL, 10	55, _____, B-022-004, Falstaff, MO, 6	111, _____, C-021-005, R & H, NY, 6
21, _____, A-035-013, Gilt Top, WA, 4	56, _____, B-022-052, Tuscora, OH, 6	112, _____, C-024-001, Hoffman, NJ, 6
22, _____, A-042-022, Anaconda (Min \$50), MT, 10	57, _____, B-022-999, Drink Lasser's Beverages Phone Lincoln 370, 6	113, _____, C-031-002, P O C (Min \$20), OH, 6
23, _____, A-045-999, If You Gotta Go, Go To Beer Take Out 621 West Commercial, 6	58, _____, B-023-017, Mausner,, 2	114, _____, C-034-999, Drink Pepsi-Cola,, 10
24, _____, A-050-001, Arcadia (Min \$100), WI, 4	59, _____, B-023-999, The Bennett Company Bottled Carbonated Beverages, 6	115, _____, C-034-999, Mission Beverages, CA, 10
25, _____, A-077-001, Coors, CO, 10	60, _____, B-024-026, Narragansett Var B, RI, 8	116, _____, C-071-001, Miller, WI, 10
26, _____, B-002-010, Old Mission (Min \$50), CA, 8	61, _____, B-040-999, Pepsi-Cola / America's Biggest Value, 6	117, _____, D-002-010, Perfection, PA, 6
27, _____, B-005-004, Reno (Min \$75), NV, 6	62, _____, B-048-002, Gold Top, OH, 4	118, _____, E-001-011, Mount Carbon, PA, 4
28, _____, B-007-019, Bohrer, IN, 4	63, _____, B-079-002, Bud Light, MO, 10	119, _____, E-001-013, Tivoli, CO, 8
29, _____, B-007-027, Imperial (Min \$30), MO, 4	64, _____, B-079-003, Budweiser, MO, 10	120, _____, E-001-014, Trommer, NY, 6
30, _____, B-007-999, BULL & BEAR BUFFET INDP'LS, IND., IN, 6	65, _____, C-004-001, Pabst, WI, 4	121, _____, E-003-005, Fisher, UT, 8
31, _____, B-007-999, GEO. F. BAUER'S COOPERAGE WORKS 31, STAB. MASTER PHILA, PA., PA, 10	66, _____, C-005-013, Henning (Min \$20), IL, 6	122, _____, E-003-013, Kamms, IN, 8
32, _____, B-014-110, Goetz, MO, 6	67, _____, C-006-002, Falls City, KY, 10	123, _____, E-003-027, Central, MO, 4
33, _____, B-014-142, Hagen-Becker, MN, 6	68, _____, C-006-003, Iroquois, NY, 4	124, _____, E-004-005, Arrow, MD, 6
34, _____, B-014-184, Boulevard, MO, 10	69, _____, C-006-004, Pabst, WI, 6	125, _____, E-004-010, Atlas, IL, 6
35, _____, B-014-999, 1933 Worlds Fair, IL, 8	70, _____, C-006-004, Pabst, WI, 10	126, _____, E-004-011, Berghoff, IN, 8
	71, _____, C-009-001, Acme, CA, 6	127, _____, E-004-018, Bushkill, PA, 6
	72, _____, C-009-006, Storz, NE, 6	128, _____, E-004-020, Centlivre, IN, 8
	73, _____, C-010-013, Manz, PA, 6	129, _____, E-004-029, Diehl Var B, OH, 6
	74, _____, C-010-028, Miller (Bottle), WI, 8	130, _____, E-004-033, Falls City, KY, 6
	75, _____, C-011-002, Independent, WI, 10	131, _____, E-004-035, Falstaff Var A, MO, 4
	76, _____, C-012-044, Fesenmeier, WV, 4	132, _____, E-004-049, Independent, WI, 10
	77, _____, C-012-055, Peerless, WI, 8	133, _____, E-004-057, Manhattan, IL, 6
	78, _____, C-012-060, Schaefer, NY, 8	134, _____, E-004-117, Goetz, MO, 6
	79, _____, C-012-159, Schaefer, NY, 4	135, _____, E-005-141, Acme (Add Cypress 3-4747), NY, 6
	80, _____, C-013-019, Detroit, MI, 6	136, _____, E-006-035, Krueger, NJ, 10
	81, _____, C-013-037, Fitzgerald, NY, 6	137, _____, E-006-067, Burkhardt, OH, 6
	82, _____, C-013-071, Miller , WI, 6	138, _____, E-007-007, Goetz, MO, 6
	83, _____, C-013-080, Miller, WI, 8	139, _____, E-007-010, Prima, IL, 6
	84, _____, C-013-093, Knickerbocker, NY, 8	140, _____, E-008-CAN, Queen's Hotel Montreal / Same, CAN, 6
	85, _____, C-013-096, Schlitz, WI, 4	141, _____, E-009-004, Blatz, WI, 4
	86, _____, C-013-097, Schmidt, MN, 4	142, _____, E-009-024, Buckeye, OH, 6
	87, _____, C-013-110, Sterling, IN, 4	143, _____, E-009-041, Rainier , WA, 8
	88, _____, C-013-117, Weibel, CT, 6	144, _____, E-009-089, Coors, CO, 6
	89, _____, C-013-134, Goebel, MI, 2	145, _____, E-009-115, Schmidt, MN, 6
	90, _____, C-013-190, Schaefer, NY, 8	146, _____, E-009-999, W. W. Boynton Inc. Northampton, Mass. / Same, MA, 6
	91, _____, C-014-012, Rheingold, NY, 8	147, _____, E-011-006, Kaiers, PA, 6
		148, _____, E-011-013, Stegmaier, PA, 6
		149, _____, E-013-005, Enterprise, MA, 8
		150, _____, E-013-009, Hamms, MN, 6
		151, _____, E-014-005, Acme, CA, 6
		152, _____, E-014-006, Acme , CA, 6
		153, _____, E-014-015, Bavarian Var B, KY, 8

JFO Auction Closing May 30, 2007: Name & #:

4, _____, E-014-032, Brucks, OH, 6	217, _____, F-015-999, Seven Up Bottling Springfield Illinois, IL, 8	272, _____, M-117-001, Michelob, MO, 10
155, _____, E-014-036, Burgermeister, CA, 8	218, _____, F-029-999, Carthage Bottling Wks 7Up Mixer, MO, 8	273, _____, M-118-001, Widmer, OR, 10
156, _____, E-014-040, Butte, MT, 8	219, _____, G-022-001, Fort Pitt, PA, 8	274, _____, M-119-001, Budweiser, MO, 10
157, _____, E-014-046, Columbia, MO, 6	220, _____, G-034-001, Belmont Prod- ucts, OH, 6	275, _____, N-009-008, Vienna, OH, 4
158, _____, E-014-051, Coors, CO, 8	221, _____, G-048-019, Miller, WI, 10	276, _____, N-011-999, Manitou Pale Dry Ginger Ale, CO, 8
159, _____, E-014-052, Coors, CO, 8	222, _____, G-056-003, Holy Cow, NV, 10	277, _____, N-023-002, Budweiser (Min \$20), MO, 8
160, _____, E-014-053, Croft, MA, 8	223, _____, H-002-007, Burger , OH, 6	278, _____, N-034-001, Champagne Velvet (Min \$50), IN, 6
161, _____, E-014-063, Duquesne, PA, 6	224, _____, H-002-036, Schmidt, PA, 6	279, _____, N-042-001, Bud (Min \$50), MO, 6
162, _____, E-014-069, Eastside, CA, 6	225, _____, H-003-006, Edelweiss, IL, 10	280, _____, N-056-001, Miller, WI, 8
163, _____, E-014-071, Edelweiss, IL, 6	226, _____, H-003-013, Hohenadel, PA, 6	281, _____, N-072-001, Falstaff (Min \$50), MO, 10
164, _____, E-014-079, Stoney, PA, 6	227, _____, H-003-015, Iron City, PA, 6	282, _____, N-079-001, Simon (Min \$20), NY, 6
165, _____, E-014-081, Falstaff, MO, 6	228, _____, H-006-012, Pabst, WI, 6	283, _____, N-093-001, Hamms, MN, 10
166, _____, E-014-086, Fesenmeier, WV, 6	229, _____, I-004-003, Ballantine Var B, NJ, 6	284, _____, N-096-001, Fehr (Min \$90), KY, 6
167, _____, E-014-101, Genesee, NY, 6	230, _____, I-004-004, Blatz, WI, 6	285, _____, N-112-001, Stag (Min \$50), 8
168, _____, E-014-105, Gibbons, PA, 8	231, _____, I-004-008, Drewrys, IN, 8	286, _____, N-121-001, Falstaff (Min \$50), 10
169, _____, E-014-107, Gluek, MN, 6	232, _____, I-004-009, Embassy Club, IL, 2	287, _____, N-138-001, Coors Light, CO, 10
170, _____, E-014-109, Goetz, MO, 6	233, _____, I-004-011, Falls City, KY, 2	288, _____, O-002-006, Heileman Schlitz (Min \$20), WI, 8
171, _____, E-014-110, Goetz, MO, 10	234, _____, I-004-013, Genesee, NY, 6	289, _____, O-014-999, Sun Crest Soda, 8
172, _____, E-014-111, Goetz, MO, 6	235, _____, I-004-014, Golden Glow, CA, 6	290, _____, O-505-999, Nehi (Min \$25), 6
173, _____, E-014-112, Goetz, MO, 6	236, _____, I-004-021, Pabst, WI, 6	291, _____, P-047-CAN, Vancouver- Breweries / Pilsener Beer (Min \$50), CAN, 8
174, _____, E-014-127, Griesedieck, MO, 6	237, _____, I-004-023, Rainier, CA, 8	292, _____, P-080-001, Froedtert Malt (Min \$50), WI, 6
175, _____, E-014-128, Griesedieck, MO, 6	238, _____, I-004-027, Sterling, IN, 4	293, _____, P-131-001, A-B (Min \$40), MO, 8
176, _____, E-014-133, Hamms, MN, 10	239, _____, I-004-028, Tavern Pale, IL, 4	294, _____, P-173-001, Schaefer (Min \$35), NY, 10
177, _____, E-014-135, Hamms, MN, 10	240, _____, I-004-041, Meister Brau, IL, 6	295, _____, Q-008-001, Budweiser, MO, 10
178, _____, E-014-138, Hand, IL, 2	241, _____, I-009-001, Waldorf, OH, 6	296, _____, Q-008-003, Coors Var A, CO, 10
179, _____, E-014-141, Hauenstein, MN, 8	242, _____, I-017-296, Falstaff (Ro-Loc Process) Min \$10, MO, 6	297, _____, Q-008-006, Michelob , MO, 10
180, _____, E-014-143, Heileman, WI, 8	243, _____, I-019-009, Pabst (Black Col- lar), WI, 10	298, _____, Q-008-014, Michelob Light, MO, 10
181, _____, E-014-166, Kingsbury, WI, 10	244, _____, I-019-009, Pabst (Red Col- lar), WI, 10	299, _____, Q-008-027, Lone Star, TX, 10
182, _____, E-014-180, Mankato, MN, 10	245, _____, I-019-018, Goetz, MO, 10	300, _____, Q-008-043, Budweiser, MO, 10
183, _____, E-014-184, Metz, NE, 6	246, _____, I-020-001, Adler Brau, WI, 10	301, _____, Q-012-003, Budweiser, MO, 10
184, _____, E-014-193, Muehlebach, MO, 6	247, _____, I-020-006, Hamms Var B, MN, 8	302, _____, Q-012-011, Busch, MO, 10
185, _____, E-014-208, Olympia, WA, 10	248, _____, I-020-012, Pearl, TX, 6	303, _____, Q-062-002, Miller Var A, WI, 10
186, _____, E-014-214, Peerless, WI, 6	249, _____, I-022-004, Duquesne, PA, 8	304, _____, Q-062-006, Coors Light, CO, 8
187, _____, E-014-225, Potosi, WI, 8	250, _____, I-022-017, Standard, NY, 8	305, _____, R-022-001, Bud, MO, 10
188, _____, E-014-228, Rainier Var B, CA, 8	251, _____, I-022-027, Canadian Ace, IL, 6	306, _____, R-023-001, Budwesier, MO, 10
189, _____, E-014-253, Scheidt, PA, 8	252, _____, I-027-999, Seven-Up, 8	307, _____, R-024-001, Bud Light, MO, 10
190, _____, E-014-259, Schmidt, MN, 8	253, _____, J-008-003, Fox Head, WI, 8	308, _____, R-025-001, Budweiser (R/B), MO, 10
191, _____, E-014-264, Schmidt, PA, 8	254, _____, J-010-001, Pabst, WI, 6	309, _____, R-025-006, Bud Light, MO, 10
192, _____, E-014-268, Spoetzi, TX, 8	255, _____, L-015-001, Budweiser, MO, 10	310, _____, R-026-001, Bud Light, MO, 10
193, _____, E-014-284, Tivoli, CO, 8	256, _____, M-003-005, Edelweiss (Green), IL, 2	311, _____, R-026-002, Budweiser, MO, 10
194, _____, E-014-297, Wehle, CT, 6	257, _____, M-003-016, Barbey, PA, 2	312, _____, R-029-001, Miller, MO, 10
195, _____, E-014-300, Wiedemann, KY, 10	258, _____, M-003-999, Theo De Witt Hotels (Yellow), 6	313, _____, R-031-001, Bud, MO, 10
196, _____, E-014-325, Bobbie, WI, 8	259, _____, M-004-001, Blatz, WI, 6	314, _____, R-032-002, Bud Var B, MO, 10
197, _____, E-014-347, Diehl, OH, 6	260, _____, M-004-002, Blatz, WI, 4	315, _____, R-034-UL, B (Logo) Budweiser (Soccer Ball), MO, 10
198, _____, E-014-356, Falstaff, MO, 8	261, _____, M-005-004, Falstaff Miller (Min \$25), MO, 6	316, _____, R-035-001, Bud Light, MO, 10
199, _____, E-014-418, Oshkosh, WI, 6	262, _____, M-009-001, Ballantine, MO, 8	317, _____, R-036-001, Budweiser, MO, 10
200, _____, E-014-419, Pearl, TX, 8	263, _____, M-024-001, Coors, CO, 10	318, _____, R-038-001, Budweiser, MO, 10
201, _____, E-014-515, Kamms, IN, 6	264, _____, M-029-052, Great Falls & Bud- weiser, MT, 6	319, _____, R-039-001, Budweiser, MO, 10
202, _____, E-014-529, Ortlieb, PA, 6	265, _____, M-030-014, Lone Star, AR, 4	320, _____, R-040-001, Bud Light, MO, 10
203, _____, E-014-555, Stag, MO, 8	266, _____, M-032-002, Pabst, WI, 4	321, _____, R-045-001, Budwesier, MO, 10
204, _____, E-014-584, Becker (Min \$20), WY, 10	267, _____, M-040-999, Jimmie Evolo Bever- age Dustritor Beer & Soda Potts- ville, Pa. MA. 2-5282, PA, 10	322, _____, R-050-001, Coors Light, CO, 10
205, _____, E-014-601, Falstaff Var B ', MO, 6	268, _____, M-076-001, Schlitz (Min \$40), WI, 10	323, _____, T-001-001, Moerlein (Min \$20), OH, 10
206, _____, E-014-602, Fergus (Min \$30), MN, 10	269, _____, M-086-002, Schlitz (Min \$40), WI, 8	324, _____, T-002-006, Anchor Steam, CA, 10
207, _____, E-014-653, Warsaw, IL, 8	270, _____, M-099-001, Falstaff (Min \$75), MO, 8	325, _____, Z-999-ZZZ, Bid for Lots Receiv- ing No Bids (< 1.00) (Excludes Min Lots)
208, _____, E-014-705, Oertel, KY, 6	271, _____, M-106-001, Michelob, MO, 10	
209, _____, E-014-735, Banner (Min \$20), MI, 8		
210, _____, E-014-796, Hudephol (Min \$25), OH, 8		
211, _____, E-026-001, Virginia (Min \$50), VA, 4		
212, _____, F-005-053, Brunetti, 4		
213, _____, F-005-999, Glacier Club Ginger Ale / Standard Ginger Ale, 6		
214, _____, F-005-999, John Epping / Ken- tucky Club Ginger Ale, KY, 6		
215, _____, F-006-052, London Life, 6		
216, _____, F-007-014, Stag (Min \$25), IL, 8		