

Just For Openers Jan 2011 Issue #129

Copyright 2011
John Stanley
PO Box 64 Chapel Hill NC 27514-0064
(919) 824-3046

Web Site: www.just-for-openers.org

Past Editors
Don Bull (1979-83)
Ed Kaye (1984-88)
Art Santen (1989-1993)

Annual Dues \$20.00 or
View Free on the Web Site
Use PayPal at jfo@mindspring.com
Renewal Due Date: 3/31/2011
Opener & Corkscrew Books
(Details in Sale Ads & On Website)

O-8 Coca-Cola
Wall Mount from
Waterloo, Iowa. An
example of a "plate
style" opener that I
really like collect-
ing.

J F O



Las Vegas 2012

John Cartwright is leading the bid for next year's JFO Convention to be in Las Vegas. We are working with the The Palms Hotel and contract negotiations are a little dicey right now as I send this newsletter out. Las Vegas offers a chance for our west coast members to attend a convention. Needless to say the town offers entertainment 24/7. The Palms has everything you can want in one location, great rooms, good restaurants, plenty of casino action, The Playboy and other night clubs. John is talking to the Arizona A-1 club members about joining our convention. More news to come.

2011 JFO Convention #33 April 27-May 1 Cedar Rapids Iowa

Plans and sign-ups are progressing nicely for Iowa. It is not too late to come, please take the time to sign up. Iowa is a nice location for many members. The Marriott at Cedar Rapids is an extra nice hotel. The hospitality room is on the second floor and it has an adjacent room that we can have 10 six foot tables in. Anyone interested in using these tables for Wednesday to Saturday set-up please contact me. The show schedule is below and the plan for the Saturday public show is to use the hospitality room tables and then we will have 15-20 tables outside the hospitality in an Atrium area (check the last page for member's want list items, make some members happy).

2011 JFO Convention Schedule Cedar Rapids Iowa

Tuesday: Early Arrivals and early room-to-room trading, we are hoping to have the hospitality room set-up

Wednesday: About half of the members will be arriving, room-to-room and hospitality room will be open

Thursday: The other half of the members will be signing in, more room-to-room and hospitality room

Friday: Late morning car pool to Amana Colonies for tour and lunch, an afternoon visit to Scott's house to see his collection, late afternoon a small auction for members attending (1 to 3 "good" items)

Saturday: Public Show 8AM to 1PM (in Hospitality Room and Atrium area), Display Contest will be at this time, that evening group supper for remaining members staying until Sunday

Display contests are the regular contest (first, second and third) of any kind of openers and corkscrews (please try to keep the display size to a 3 foot by 3 foot area, smaller sizes welcomed) and the "Bill McKenzie Best in Show" award for your favorite "one" opener or corkscrew. Displays are to share your collection with your fellow members. Some members put a lot of time and effort and others (myself included) just bring some openers and corkscrews in a small showcase. Come and enjoy the camaraderie of a JFO Convention plus see all kinds of openers and corkscrews!

Member's Update

Last June 20, 2010, Don Larson (#759) of Beloit, Ks., passed away at the age of 67. I never met Don and he collected all kinds of openers and corkscrews. The JFO family sends condolences to the Larson family.

Mead Bates (#416) of Darien, Ct., owner of Cymba Inc. (opener manufacturing company), passed away October 1st, 2010 at the age of 68. Mead started manufacturing openers in the mid-1990s and many JFO styles were made by his company. He was also an early eBay seller and enjoyed selling all kinds of "small items". His daughter, Kristi, will continue to run the company. Our condolences go to the Bates family.

On December 31st long time JFO member Henry Stawarz (#184) of Rushville, Il., passed away at the age of 81. Henry attended several JFO conventions, the last being Chicago in 2000. Henry was always finding a lot of neat openers and corkscrews and collected all types of breweriana. JFO condolences go to his family.

Unfortunately Tom and Phyllis Gormally will not be able to attend the JFO Convention as Phyllis is recovering from breast cancer treatments. Also Jim Osborn will not be able to attend as he had an operation to remove a benign mass near his left adrenal gland which also was removed. Both Phyllis and Jim are doing fine. Finally Herb Danziger will miss the convention due to unspecified health reasons. If you get a chance drop Phyllis, Jim and Herb a card wishing them well. They will be missed in Iowa.

Just For Openers 2011 Membership Directory Updates
Just For Openers Current Members: 249 (New Member Numbers 1148-1151)

#	Last Name	First	Spouse	Street	City	St	Zip	Phone	E-Mail	Opener Specialties
1149	Eblen	H John	Marcia	1018 Nancy Pl	Manteca	CA	95337-9494	209-825-7261 C209-915-5445 F209-825-7261	reggie1dog@msn.com	Starr Wall, Wall Mounts
553	Minne	Tom	Carol	296 Knight St	Kalamazoo	MI	49048-5921	269-349-8505	openers2000@yahoo.com	General (All Categories) (Rejoin 1990 JFO Book)
1151	Noah	Sean		c/o Judy Noah 421 S Hancock	Davenport	IA	52802-1707	432-688-9053	p.h.noah@conocophillips.com	General (JFO Website)
776	Patton	John	Eileen	9224 Sugarloaf Dr	Redding	CA	96001-9763	530-229-7719	deacon@jett.net	"B-24" "C-19" "E-1-2-3-9-11-13-14" "G-1" "H-3" "I-1-2-3-6-7-15-18-22", "J-5" (Rejoin)
910	Pehling	Darlene	Willard	PO Box 665	Walker	MN	56484-0665	218-547-3173		General, US Beer, Soda, Can, Starr, Wall Mount Openers (Rejoin)
1148	Willaman	Joe		6464 Linbrook Dr	Clinton	OH	44216-9412			General
1150	Wiskus	Ken	Kate	231 Long Hill Rd	Gurnee	IL	60031-5001	847-672-9894	papakjw@yahoo.com	US Beer & Can Openers

Just For Openers	January Issue	April Issue	July Issue	October Issue
Newsletter Content	New Additions to Handbook	Membership Directory	Convention Highlights	New Discoveries
Articles	December 1st	March 1st	June 1st	September 1st
To Members By	January 31st	April 30th	July 31st	October 31st

Spouse's Corner

By Pat Stanley, the Editor's Spouse

In the last newsletter I learned more about wine. When we visited Sutter Home Winery on our annual San Francisco trip, I learned that John likes their Merlot. He goes through phases on everything except openers and hopefully spouses, so I have to keep wine on my weekly grocery list.

Just like so many things, they just don't make things as good as they use to (in the good ole days when wonderful openers were given out as advertisements)..... grocery bags aren't good at all.

Every week I remind John to be careful as the bag might break and the dogs are usually right under foot. Well, one week I came home and he was in the yard with the dogs. After they get some play time he takes them on a walk. So, I grabbed my weekly bunch of fresh flowers and his 1.5 liter bottle of Sutter Home. Just as I came into the kitchen...you know what happened.

I opened the door to warn him not to come in, glass everywhere...oh yes...wine too. He yelled for me not to let it get into the grout. Apparently this smart man has forgotten that the indentations for grout are lower than the tile. Also he did not understand just how much wine I had streaming across the floor.

Since I knew he was about to leave on the walk without any idea of what exactly the "situation" was inside, I pulled out my Blackberry to record the disaster area.

I placed the only two bigger pieces of glass on top of the single torn bag, but quickly realized there was no way it would handle a least a million small shards of glass. So off to the garage for two buckets. One for the glass and one to throw paper towels in that were soaked with wine mixed with what else but glass! Also grabbed a special broom I have for spilled sugar, broken glass, etc.....I love gadgets.

The scene hadn't improved a whole lot when the dog walker returned. Between us we spent a couple of hours restoring everything best we could.

Tan grout didn't look tan anymore, but John was handling that well. Ironically I had purchased a bleach pen that day too. It does fade out the discoloration and the company that installed the floor a couple of years ago said that would be ok.

Now, although it costs more, I have to purchase little one serving only wine bottles. He said he was tired of having to deal with the corks!! Can you believe that??? Can't one of these antique corkscrews that were made better than the ones today, easily open a wine bottle??

It all ended well. The grocery store replaced the wine (they said I could get whatever I wanted...guess they figured out that I didn't know enough about the subject...didn't have my JFO article with me). I picked out the same wine, a couple of more bleach pens and one grocery item. There was no charge and I was given two small gift certificates. Within a few days their insurance company contacted me and sent me a \$100 gift certificate. It will help pay for "little" bottles of wine and will always make me feel loyal to such a good store.

John has his wine and as you know, I like Pina Colada. It doesn't stain anything if it is dropped and since I get a plastic bottle, no glass either.

So you will see John with his little mini wine bottles when You Come to JFO!!!

John told me I need to write about what to bring to JFO, so here goes:

Spouse's Corner (continued)

Bring a Happy Face,
JFO is Such a Great Place

Harriett will Have on Her Smiley Shirt
Happy People There is a Great Perk

It Never Seems like We've Been Apart a Year
Especially After a Few Beers

We Catch Up on All the News
There's No Time to Snooze

Bring Some Funny Jokes
The Funniest Ones Will Win Lots of Votes

There Will Be Lots of Stories in the Hospitality Suite
Where Old-Timers and New Members Meet

Bring Lots of Openers
Enough to Create Quite a Stir

There is So Much Opener Talk
Sometimes the Spouses Have to Take a Walk

At JFO You Can Find a Good Trade
And Never Feel Your Friendship is Betrayed

Some Will Sell for a Price
And Worth it if it's Really Nice

Bring a Display to Show on Saturday
Keep it Hidden During the Rest of the Stay

Don't Let Captain Corkscrew See it Too Soon
Or the Surprise Will Be Ruined

There's Always Some Really Neat Displays
Who Should Win is Often Hard to Say

Ollie Will Always Be There in Our Hearts
He Always Said "*Be There*" When Time Came to Depart

So Off to Iowa We Go
Lots of Openers in Tow

JANUARY 2011 ADDITIONS & CORRECTIONS TO 2010 HANDBOOK
(COPYRIGHT JANUARY 2011 JOHN STANLEY)

- A-3
63. JIFFY BRUMALT DISTRIBUTOR MOSEL JOHNSON CO
STUEBENVILLE OHIO
- A-4
72. DRINK NEW LIFE JOE PASH, COSHOCTON, O.
73. SCHWAB'S PRUE GOLD BEER HAMILTON, OHIO.
- A-5
146. RICHARD BORRA MALT & HOPS 1245 MACK AVE. PHONE
LENOX 1938
147. DOUBLE M MALT STORES 2708 MICH. AVE.8327 8815
MICH. AVE. CEDAR 4150
148. DUFF'S TEMPLE MALT - HOPS & SUPPLIES GLENDALE
1072
149. LINCOLN MALT & HOP CO.. LINCOLN & WINDLAKE
AVES.
150. MONCHNIK'S FEED STORE SUGAR-MALT-HOPS-SUPPLIES
12130 JOS. CAMPAU AVE. PHONE LONGFELLOW 8694
151. SHAWMUT MALT CO. 387 SHAWMUT AVE. BOSTON,
MASS. TEL.COM. 4680
152. STONE MALT CO. SAMBO - RED SUN - HOME RULE
CREAM-OF-LIFE DOUBLE DUTCH MALTS
- A-7
50. GREAT FALLS BOTTLERS' SUPPLY CO. 107-109-4TH
ST. SO. GREAT FALLS, MONT.
- A-9
50. CALIF. BEVERAGE & SUP. CO. 532 SIXTH ST. OAK-
LAND, CAL. (SEE C-28-4)
- A-12
27. COMPLIMENTS OF L. LANDA WHITE STAR MALT
- A-15
79. AMERICAN BREWING CO. DETROIT, MICH. CREAM TOP
- A-20
56. FOX SPARKLING BEVERAGES
- A-21
161. WM. IRWIN BUCK, MARLBORO 3460, DISTRIBUTOR FOR
OLD EXPORT DUQUESNE
162. FROM YOUR OLD STYLE MAN C. L. ALLISON
163. SCHLITZ (SCRIPT LETTERS) WAKE WHOLESALE CO.
- A-28
72. BUDWEISER JOS. WEICKENAND, DISTRIBUTOR. DAR-
LINGTON, WIS.
- A-29
127. T.P. ROCHE VELVET BRAND WHITTIER 1212 8425
MACK AVE. (SEE A-15-75)
128. DRINK SHERRY MIST / MALT & HOPS 937 E. ANAHEIM
ST., LONG BEACH
- A-35
57. KEY TO FRANK S. NOVAK, BOTTLED BEERS.
- A-84
3. BUD LIGHT / BUDWEISER BUD BOWL TAMPA 2009 (PIC
OF FOOTBALL) (BLACK, BLUE & RED ON BROWN)
4. BUD LIGHT / CINCINATTI BENGAL'S "B"
5. BUD LIGHT BUD BOWL MIAMI 2010 (ON CITY SCENE)
6. BUD LIGHT BUDWEISER (ON GRIDIRON) BUD BOWL
TAMPA 2009 (PIC OF FOOTBALL)
- A-91
1. BUDWEISER (IN CROWN BOWTIE) BUDWEISER SELECT
(CROWN LOGO) BUD LIGHT (WHITE ON GREEN)
(#909)
- A-97
1. BUDWEISER (CROWN LOGO) BEIJING 2009 (OLYMPIC
LOGO) (4 VAR (A) ARCHER (B) CYCLIST (C) RUN-
NER (D) SWIMMER) (#158)
- A-99 BASKETBALL
CAP LIFTER
(SEE Q-46)
MADE IN CHINA
2 11/16"
JOHN STANLEY
1. BUD LIGHT (LOGO) MARCH TO THE CHAMPIONSHIP
(BLUE ON ORANGE)

- A-100 SHOULDER PADS
CAP LIFTER
MADE IN CHINA
3 3/8"
MIKE KREJCI/JOHN STANLEY
1. BUD LIGHT (LOGO) 60 60 (BLUE ON WHITE)
2. BUDWEISER (CROWN LOGO) THE GREAT AMERICAN LA-
GER 60 60 (RED ON WHITE)
- A-101 HOME PLATE
CAP LIFTER
MADE IN CHINA
2 3/4"
BEN HOFFMAN/JOHN STANLEY
1. BUDWEISER (SCRIPT) THE GREAT AMERICAN LAGER
(RED ON WHITE)
- A-102 BOTTLE
CAP LIFTER
MAGNET ON BACK
4 3/8"
ART SANTEN
1. BUDWEISER (CROWN LOGO)
- A-103 SURFBOARD
CAP LIFTER
MAGNET ON BACK
5"
MIKE KREJCI
1. LANDSHARK PREMIUM QUALITY LAGER ORIGINAL IS-
LAND LAGER (PIC OF SHARK FIN IN FRONT OF AN
ISLAND) MARGARITAVILLE HEMISPHERE DANGER (IN
LOGO)
- A-104 HORSESHOE
CAP LIFTER
MADE IN CHINA
3 3/4"
EBAY
1. ROLLING ROCK
- B-5
58. COMPLIMENTS OF OTOE BREWING NEBRASKA CITY,
NEBR.
- B-8
12. DRINK GOLD BOND BREW
- B-13
149. BLUE RIBBON MALT AND HOPS / UNIVERSAL FOOD
PRODUCTS CO. 5310 MARKET ST. PHILA., PA.
150. J. G. FOX & CO. SEATTLE, WASH. (W/ SHOOTING
STAR)
151. WESTERN BOTTLE SUPPLY CO. 4314 SUNSET /
"EXPRESS MALT" THE BEST
- B-14
201. ATLAS BREW GEO. MILLER VICTOR, IOWA
- B-14 CORRECTIONS
49. FRESNO BREWING CO. - BOHEMIAN TYPE (ADD "TYPE"
#587)
- B-18
730. KEY TO BRANDON & BEAL'S BEER THE BEER WITHOUT
A HEADACHE
266. "EAST SIDE BEER" AGENT / G.H. BUBITZ SAN BER-
NARDINO, CAL. (2 VAR (A) LARGE LETTERS MADE BY
CHICAGO SPEC. BOX CO. (B) SMALL LETTERS MADE
BY PACIFIC GLASS CO. S. F.) (#587)
731. INGERSOLL & ESLER CO. SAN BERNARDINO, CAL.
732. NATIONAL SAGINAW, MICH. THE BEST BEER / DRINK
NATIONAL BEER
733. DRINK NORTHERN BREWING CO.'S FAMOUS SUPERIOR
BEER
734. KEY TO STRENGTH V. A. OSWALD'S OLD BULL STOUT
- ALTOONA, PA.
735. PORTLAND BEVERAGE SUPPLY CO. BWAY. 2398-431
STARK ST. MALT - SYRUP - HOPS
736. SAN ANTONIO BR'G ASS'N. "CITY" BREWERY
737. SCHLITZ BEER HENKING'S HOTEL SPRINGFIELD,
MASS.
- B-18 CORRECTIONS
707. DRINK CONEMAUGH BEER (ADD "DRINK" #752)

- B-19
- 278. FOR BARTELS BEER (STAMPED ON REVERSE SIDE)
 - 279. PARK BREWING COMPANY, HANCOCK, MICH. / "ELITE" AND "PARK BREW"
 - 280. E. TOSETTI BRG. CO. / REAL GERMAN BEER
- B-21
- 636. BAY CITY BEVERAGE CO. / TOLUCO
 - 637. COMPLIMENTS OF FAUST BAR, 201 W. 5TH. ST.
 - 638. KEY TO HAUSMANN'S FAMOUS BEER
 - 639. LONE STAR BREWING CO. / KEY TO ALAMO
- B-21 CORRECTIONS
- 467. CALL FOR HAUENSTEIN'S OLD PROCESS BEER (ADD FIRST WORD "CALL" #980)
 - 625. MEYERSDALE EXPORT BEER (DELETE USE #611) (2011,339)
 - 631. "RED WING" PILSNER THE BEER WITHOUT A PEER (DELETE "/" #930)
 - 306. SCHWARZENBACH'S SELECT BEER-CRYSTAL ALE. / SCHWARZENBACH'S "WURZBURGER" (UNDELETE ADD HYPEN AND QUOTES #980)
- B-23
- 201. NOONAN'S MALT & HOP CO. WHOLESALE & RETAIL 159 PUTNAM STREET
- B-24
- 23. MATHIE-RUDER BREW. CO. WAUSAU WISCONSIN ENJOY RED RIBBON & GOLD STAR BEER (2 VAR RED RIBBON & GOLD STAR BEER (A) LARGE LETTERS (B) SMALL LETTERS) (#909)
- B-55
- 39. BUD LIGHT BUD LIGHT (PIC OF SPUDS MACKENZIE IN A BEACH CHAIR) (NOT #35)
- B-58
- 36. BUSCH BORN OF NATURAL INGREDIENTS SMOOTH RE-FRESHING BEER
- B-63
- 21. J. G. FOX & CO. SEATTLE / DRINK FOX BEVERAGES
- B-73
- 58. ANDERSON VALLEY BREWING CO. WWW.AVBC.COM SOLAR POWERED BREWERY (PIC OF SUN) (GOLD, WHITE & YELLOW ON BLACK)
 - 59. ATOMIC ALE BREWPUB & EATERY "SCIENTIFIC PROOF THAT FLAVOR DOES EXIST" RICHLAND, WA.
 - 60. BAD FROG BEER (PIC OF FROG) THIS ONE'S FOR YOU! (GREEN, RED & WHITE ON BLACK)
 - 61. BELL'S (PIC OF 3 BELLS) OBERON ALE (PIC OF CLOWN FACE) (BLACK, BLUE & WHITE ON YELLOW)
 - 62. BLUE STAR BREWING COMPANY RESTAURANT & BAR FINEST QUALITY EST. 1996 (PIC OF STAR) (BLUE ON WHITE)
 - 63. BRECKENRIDGE BREWERY (B B LOGO) (WHITE ON PURPLE)
 - 64. BRECKENRIDGE BREWERY (B B LOGO) FINE COLORADO ALES (WHITE ON BLACK)
 - 65. EEL RIVER BREWING COMPANY (BRIDGE OVER RIVER LOGO) BE NATURAL DRINK NAKED AMERICA'S 1ST CERTIFIED ORGANIC BREWERY FORTUNA, CALIFORNIA
 - 66. GREAT LAKES BREWING CO. (LOGO) CLEVELAND, OHIO (GOLD & WHITE ON BLACK) (GOLD & WHITE ON BLUE)
 - 67. HARPOONBREWERY.COM H (IN DIAMOND LOGO ON BOTTLE CAP) (GOLD & WHITE ON RED)
 - 68. LAKEFRONT BREWERY, INC. L B (MUG LOGO) TRADE MARK MILWAUKEE WISCONSIN
 - 69. LEFT HAND BREWING COMPANY LONGMONT, COLORADO (PIC OF RED HAND) (BLACK & RED ON WHITE)
 - 70. LONG TRAIL ALES A TASTE OF VERMONT (PIC OF HIKER) (ON BOTTLE CAP) (BLACK ON YELLOW)
 - 71. MARBLE CITY BREWING CO.
 - 72. MGD 64 CALORIES (BLACK ON WHITE)
 - 73. MILLER LITE (LOGO) RALLY FOR GREAT TASTE (BLACK, BLUE, GOLD & RED ON WHITE)
 - 74. NEW HOLLAND BREWING (LOGO)
 - 75. NORTH BY NORTHWEST (PIC OF BEAR W/ PITCHER OF BEER) OKTOBER FEST AN AUSTIN ORIGINAL (BLACK ON BROWN)
76. PLINY THE ELDER (FROM RUSSIAN RIVER BREWING SONOMA CA)
77. REAL ALE BREWING CO. HANDCRAFTED ALES FROM THE TEXAS HILL COUNTRY (PIC OF GREEN HOPS) (BROWN & GREEN ON WHITE)
78. RIGHT BRAIN BREWERY TRAVERSE CITY (PIC OF MAN'S HEAD) (BLACK ON WHITE)
79. SIERRA NEVADA (LOGO) CHICO, CALIFORNIA
80. SILVER CITY BREWERY EST. 1996 (GOLD & SILVER ON BLACK)
81. SIX ROW BREWING COMPANY ST. LOUIS, MO. (PIC OF HOPS) (BROWN & YELLOW ON WHITE)
82. TIN (PIC OF BUILDING) MILL BREWING COMPANY HERMANN MISSOURI (RED, WHITE & YELLOW ON BLACK)
- B-74 CORRECTIONS
- 2. STOUTS BREWING COMPANY (LOGO) (DELETE RELISTED AS B-73) (2010,572)
- B-78
- 2. BELL'S (PIC OF 3 BELLS) KALAMAZOO, MI. INSPIRED BREWING
- B-83
- 3. INTERCOURSE BREWING COMPANY (PIC OF FARM) PENNSYLVANIA
- B-87
- CAP LIFTER/MILK BOTTLE OPENER MARKED "PAT. PDG. B. & B." 3 3/4" KEITH BROWN
- 1. EASTON MALT & HOP STORE 650 NORTHAMPTON ST. PHONE 1006 EASTON, PA.
- B-88
- CAP LIFTER 3" JOHN STANLEY
- 1. BUD LIGHT (LOGO) / JAZZ FESTIVAL (PIC OF KEYBOARD)
- C-13 CORRECTIONS
- 176. GRIESEDIECK BROS. ST. LOUIS (DELETE ", MO." #261)
- C-15
- 26. RED BRICK ALE (IN RED CIRCLE) (ATLANTA MICRO-BREWERY)
- C-33
- 1. LEISY'S / SAME (2 VAR (A) OPENER TOP INDENTED (B) OPENER TOP FLAT) (#980)
- C-45
- 45. BUD LIGHT (WHITE ON BLUE)
 - 46. GREAT LAKES BREWING CO. CLEVELAND, OHIO 2516 MARKET STREET CLEVELAND 771-4404
 - 47. GREAT LAKES BREWING CO. CLEVELAND, OHIO WWW.GREATLAKESBREWING.COM (MAGNET ON BACK)
 - 48. GREEN FLASH BREWING CO. (PIC OF FLASH) WWW.GREENFLASHBREW.COM (GREEN & WHITE ON BLUE)
 - 49. MILLER BREWING COMPANY REMINDS YOU TO PLEASE THINK WHEN YOU DRINK / LITE BEER
 - 50. MILLER BREWING COMPANY REMINDS YOU TO PLEASE THINK WHEN YOU DRINK / MILLER (WHITE ON GREEN)
- C-49
- 112. BUD LIGHT (C LOGO) (STEEL ON STEEL)
 - 113. THE ROAD TO BUD LIGHT BOWL 2011 (BUILDING/ FOOTBALL LOGO) ((FOOTBALL FIELD BACKGROUND 10 2 30 40 40 30 10) / SAME (BLUE & WHITE ON GREEN STEEL)
 - 114. COORS EDGE TM (BLUE ON STEEL)
 - 19. COORS LIGHT (RED, SILVER & WHITE ON BLACK VINYL) (#572)
 - 115. COORS LIGHT - OFFICIAL BEER SPONSOR - 21 MEANS 21, THE WORLD'S MOST REFRESHING BEER (NFL EMBLEM) (ATTACHED TO 24" CHAIN WITH COORS LIGHT ONLEATHER BELT LOOP & METAL MOUNTAIN EMBLEM) (BLUE, BLACK, RED & WHITE ON STAINLESS)
 - 116. DESCHUTES BREWERY BEND, OREGON (MOUNTAIN LOGO) (RED & WHITE ON BLACK VINYL)

- | | |
|--|---|
| <p>117. MICHELOB LAGER / SAME (STEEL ON STEEL)</p> <p>118. MILLER GENUINE DRAFT (RED CIRCLE & EAGLE & WHEAT) (BROWN, RED & WHITE ON BLACK VINYL)</p> <p>26. MILLER MGD GENUINE DRAFT (IN CIRCLE) (GREEN, RED & WHITE ON BLACK VINYL) (#572)</p> <p>107. MILLER LITE (LOGO) (2 VAR (A) BLUE ON STEEL (B) WHITE ON BLUE VINYL) (#572)</p> <p>6. MILLER LITE A TRUE PILSNER BEER (2 VAR (A) BLUE, RED, WHITE & YELLOW ON STEEL) (B) STEEL ON STEEL) (#572)</p> <p>119. MILLER LITE ALL NATURAL PILSENER (IN LOGO) (STARS) HONORING OUR ARMED FORCES (BLUE, RED, WHITE & YELLOW ON STEEL)</p> <p>45. MILLER LITE TRUE PILSNER BEER (3 VAR (A) BLUE ON STEEL (B) BLUE, RED, WHITE & YELLOW ON STEEL (C) WHITE ON BLUE VINYL) (#572)</p> <p>120. HI-NEIGHBOR! NARRAGANSETT SINCE 1890 (BLACK & ORANGE ON BRASS) (BLACK & RED ON STEEL)</p> <p>121. PABST BLUE RIBBON BEER (WHITE ON BLUE STEEL)</p> <p>122. PENN BREWERY CELEBRATING 20 YEARS 1986-2006 (RED ON STAINLESS STEEL)</p> <p>123. DRINK POINT BEER (BLACK ON STAINLESS STEEL) (SPINNER) (CYMBA)</p> <p>124. SCHLITZ (SCHLITZ LOGO) (BROWN, GOLD & WHITE)</p> <p>125. SHINER BEERS (BROWN & YELLOW ON STAINLESS STEEL)</p> <p>126. SHIPYARD BREWING CO. (WHITE ON BLUE VINYL) (WHITE ON ORANGE VINYL)</p> <p>28. YUENGLING (BLACK & TAN ON SILVER) (2 VAR (A) LARGE SCRIPT (B) SMALL SCRIPT (C) RED & WHITE ON STEEL) (#572)</p> <p style="text-align: center;">C-52</p> <p>6. CELEBRATING 125 YEARS HONESTLY FRESH STRAUB BEER & LIGHT SINCE 1872 ST. MARY'S, PA</p> <p>7. STRAUB BREWERY (PIC OF TRAVELING MAN) SINCE 1872 STRAUBBEER.COM / PCC PRECISION COMPACTED COMPONENTS (LOGO)</p> <p style="text-align: center;">C-66</p> <p>2. GREAT LAKES BREWING CO. / AN EXCEPTIONAL FAMILY OF BEERS (IN RIBBON LOGO) GREATLAKESBREWING.COM</p> <p style="text-align: center;">C-73</p> <p>4. BUD ICE (IN LOGO)</p> <p>5. BUDWEISER (CROWN LOGO)</p> <p>6. RAILBENDER ALE ERIE BREWING COMPANY WWW.ERIEBREWINGCO.COM (WHITE ON BLUE) (WHITE ON RED)</p> <p style="text-align: center;">C-75</p> <p>7. BUDWEISER SELECT (CROWN LOGO) (BLACK & RED ON TAN VINYL)</p> <p>8. MICHELOB LAGER (STEEL ON STEEL)</p> <p>9. ZIEGENBOCK AMBER (IN TEXAS LOGO) / ONLY TEXANS GET IT</p> <p style="text-align: center;">C-81</p> <p>2. JACOB LEINENKUGEL BREWING COMPANY LEINENKUGEL'S CIPPEWA FALLS, WISCONSIN HAND-CRAFTED BEERS EST. 1857 (IN INDIAN MAIDEN LOGO)</p> <p style="text-align: center;">C-94</p> <p style="text-align: center;">CAP LIFTER
(PLASTIC COVERED C-13)
3 3/8"
MIKE KREJCI</p> <p>1. BLATZ (IN TRIANGLE LOGO) / (COPYRIGHT STATEMENT)</p> <p>2. LONE STAR / (COPYRIGHT STATEMENT)</p> <p>3. OLD MILWAUKEE / (COPYRIGHT STATEMENT)</p> <p>4. OLD STYLE / (COPYRIGHT STATEMENT)</p> <p>5. OLYMPIA / (COPYRIGHT STATEMENT)</p> <p>6. PEARL / (COPYRIGHT STATEMENT)</p> <p>7. PIELS / (COPYRIGHT STATEMENT)</p> <p>8. RAINIER / (COPYRIGHT STATEMENT)</p> <p>9. SCHAEFER / (COPYRIGHT STATEMENT)</p> <p>10. SCHLITZ / (COPYRIGHT STATEMENT)</p> | <p>11. SCHMIDT / (COPYRIGHT STATEMENT)</p> <p>12. STROHS / (COPYRIGHT STATEMENT)</p> <p style="text-align: center;">C-95</p> <p style="text-align: center;">CAP LIFTER
(SEE C-45,71,97)
3 3/8"
MIKE KREJCI</p> <p>1. GRAIN BELT BEER (IN DIAMOND LOGO)</p> <p>2. FIFTH ANNUAL SAMUEL ADAM'S BEER LOVER'S CHOICE</p> <p>3. AUGUST SCHELL NEW ULM, MINNESOTA (A & S LOGO WITH DEER)</p> <p style="text-align: center;">C-96</p> <p style="text-align: center;">CAP LIFTER
MADE IN CHINA
4 1/4"
MIKE KREJCI</p> <p>1. LANDSHARK LAGER (PIC OF FIN AND ISLAND) / SAME</p> <p style="text-align: center;">C-97</p> <p style="text-align: center;">CAP LIFTER
(SEE C-45,71,95)
3 3/8"
ART SANTEN</p> <p>1. ODELL BREWING CO. (ELEPHANT LOGO) INDIA PALE ALE I P A</p> <p>2. ODELL BREWING CO. FORT COLLINS, COLORADO 90 SCHILLING (IN LOGO)</p> <p style="text-align: center;">C-98</p> <p style="text-align: center;">CAP LIFTER
MADE IN CHINA
2 3/8"
MIKE KREJCI</p> <p>1. POINT BEER (WHITE ON BLUE)</p> <p style="text-align: center;">E-4</p> <p>396. FLAMINGO BEER - MIAMI</p> <p>397. FOX SNAPPY DRINKS / FOX LIME RICKEY FOX GINGER ALE</p> <p>398. KERN PRODUCTS CO. PORT HURON, MICH. / MANUFACTURER GINGER ALE-ORANGE JULEP (KERN BREWING PROHIBITION CO)</p> <p>291. RAHR BREWING CO. OSHKOSH, WIS. PHONE 2394W / RAHR'S ELK'S HEAD (2 VAR (A) ROUND HEAD (B) SQUARE HEAD) (#909)</p> <p>199. TROMMER'S MALT BEERS / SAME (2 VAR (A) ROUND HEAD (B) SQUARE HEAD) (#909)</p> <p style="text-align: center;">E-5</p> <p>154. HAMM'S BEER GOOD FOOD R. & T. TAVERN AND CAFÉ "BUD" THOMAS WELCOMES YOU WINTHROPE, IOWA</p> <p>155. SCHLITZ BEER BENDA'S TAVERN HARRY AND BLANCHE CHELSEA, IA. (PIC OF MUG)</p> <p>156. STORZ BEER ON TAP AT ALL TIMES OWL CAFÉ WHERE THE THIRSTY MEET LUNCHES-SHORT ORDERS & SANDWICHES CHAS. SMITH PHONE 112 TECUMSEH</p> <p style="text-align: center;">E-6</p> <p>233. CASPER BREWING CO. CASPER, WYO. / MAKE MINE HILLCREST BEER</p> <p style="text-align: center;">E-7</p> <p>106. J. G. FOX & CO. SEATTLE / FOX SNAPPY DRINKS OLD EMERALD DRY</p> <p style="text-align: center;">E-8</p> <p>135. NORTH PACIFIC BEER BEST ON THE COAST. / SAME</p> <p style="text-align: center;">E-14</p> <p>359. FISHER BEER SINCE 1884 / SAME (2 VAR (A) FISHER BEER SLANTED LETTERS (B) FISHER BEER STRAIGHT LETTERS)</p> <p style="text-align: center;">E-22</p> <p>13. CRESCENT BEER AND DELICATESSEN. / A. M. SMITH MINNEAPOLIS.</p> <p style="text-align: center;">F-2</p> <p>70. БЕЛОIT MALT & LIQUOR CO. / BEST LIQUOR VALUES.</p> <p style="text-align: center;">F-6</p> <p>135. CRYSTAL LIQUID MALT EXTRACT / 6911 UNION AVE. MICH. 8709</p> |
|--|---|

- | | |
|--|--|
| 136. "MALTO-HOPO" / NERVE & STOMACH TONIC.
G-99 | 11. ANDERSON VALLEY BREWING CO. (BLUE ON WHITE)
G-101 |
| 137. COMPLIMENTS OF MICHIGAN MALT CO. / WE DELIVER
1622 S. SAG. STREET | 7. FOUNDER'S BREWERY (WHITE ON BLUE) |
| 138. RIDGEWOOD MALT & HOP CO. HOME BOTTLING SUP-
PLIES / PHONE HEGEMAN 8725, 762 FRESH POND
ROAD, RIDGEWOOD, N. Y.
F-7 | 8. OLDE MAIN BREWING CO. 316 MAIN ST. AMES, IA.
(WHITE ON BLACK)
G-103 |
| 19. FALSTAFF (IN SHIELD) MILLER HIGH LIFE WHITENER
& RUDROFF DISTRIBUTING CO. JEFFERSON CITY,
MISSOURI
F-12 CORRECTIONS | 2. BUSCH BEER (MOUNTAIN LOGO) (6 1/4" LONG)
G-107 |
| 3. DIAMOND SPRINGS BEERS, BEST FOR THE HOME
(CHANGE "NAME" TO "HOME" #339)
F-26 | 3. MILLER LITE (IN LOGO)
G-117 |
| 4. BROCKTON MALT PRODUCTS CO. 24 E. ELM ST.,
BROCKTON. / OLD ELM BRAND - DOMESTIC MALT
MEIERHOF - IMPORTED MALT
G-3 | 2. THE BRUERY |
| 20. SCHLITZ AND COCA COLA HUND AND EGER ST. JO-
SEPH, MO.
G-9 | 3. MILLER LITE
G-122
CAP LIFTER
2 3/4"
ART SANTEN |
| 105. BALTIMORE AMERICAN BEER (SILVER ON BLACK) | 1. ABITA BEER (LOGO)
G-123
CURVED CAP LIFTER
(SEE G-90,101,125)
3"
ART SANTEN |
| 106. ALBERT KOPPEN, INC. SELECTED BEERS-GLOUCESTER
6-0829 (BLACK ON GREEN)
G-28 | 1. ABITA BEER (LOGO)
G-124
CAP LIFTER/TAB LIFTER
NO CUT SLOT FOR TAB LIFTER
(SEE G-48,68,99)
2 5/8"
ART SANTEN |
| 77. FLYING DOG (BLACK ON SILVER) | 1. ABITA BEER (LOGO)
G-125
CAP LIFTER
(SEE G-90,101,123)
4"
ART SANTEN |
| 78. GOOSE ISLAND (BLACK ON SILVER) | 1. ANGRY HANK'S MICROBREWERY BILLINGS, MONTANA
406-252-3370
G-126
CAP LIFTER
3 3/4"
MIKE KREJCI |
| 79. MILLER HIGH LIFE PABST BLUE RIBBON (RED ON
SILVER) | 1. BODEAN'S TWISTED TEA (MUSIC NOTE LOGO)
G-127
CAP LIFTER
MADE IN CHINA
5 1/8"
MIKE KREJCI/ART SANTEN |
| 80. WYEASTLAB.COM (MALT & HOPS SUPPLIER) (WHITE ON
GREEN)
G-46 | 1. BUD LIGHT (LOGO) GOLDEN WHEAT
G-128
CAP LIFTER
5 3/4"
MIKE KREJCI |
| 8. PRESCOTT BREWING COMPANY (WHITE ON BLACK)
(WHITE ON BLUE) (WHITE ON GREEN) (WHITE ON
RED) | 1. BUDWEISER (B CROWN LOGO)
G-129
CAP LIFTER
MARKED "FOCUS MADE IN CHINA"
2 1/4"
JOHN STANLEY |
| 9. SANTACRUZALEWORKS.COM (LEFT HANDED) (WHITE ON
BLACK)
G-47 | 1. CLYDESDALES 75 ANNIVERSARY 1933-2008
G-130
DOUBLE CAP LIFTER/TAB LIFTER
3"
BRIAN COOLEY |
| 31. MILLER LITE (ROUND LOGO) | 1. SKA BREWING DURANGO, CO WWW.SKABREWING.COM
(IMAGE OF COUPLE DANCING) |
| 32. MILLER LITE A FINE PILSNER BEER (OVAL LOGO) | 2. BIG SKY BREWING CO. MISSOULA, MT.
G-131
CAP LIFTER
4 3/4"
JOHN STANLEY |
| 33. MILLER LITE TRUE TO TEXAS (FLAG LOGO)
G-48 | 1. COORS LIGHT (BOTTLE WITH COORS LIGHT THREE
TIMES) / COORS LIGHT |
| 23. BRIDGEPORT (GOLD ON BLUE) (#980) | |
| 68. MICHELOB ULTRA (LEFT HANDED) (WHITE ON BLUE) | |
| 69. OAK CREEK BREWING CO. WWW.OAKCREEKBREW.COM
(WHITE ON GREEN) (WHITE ON PURPLE) | |
| 70. OCEANSIDE ALE WORKS (OAW) (WHITE ON BLACK) | |
| 61. SEA DOG BREWING (BLACK ON LIGHT BLUE) (#980) | |
| 71. SELECT 55 (CROWN) THE LIGHTEST BEER IN THE
WORLD (BLACK ON SILVER) | |
| 72. WIDMER BROTHERS BREWING (YELLOW ON BLACK)
G-51 | |
| 11. GORDON BIERSCHE (PIC OF MAN WITH A MUG) (WHITE
ON BLACK)
G-55 | |
| 2. MAD RIVER BREWING COMPANY HUMBOLDT COUNTY,
CALIFORNIA
G-64 | |
| 2. COORS LIGHT (NECK) COORS LIGHT (LABEL) / SAME
G-68 | |
| 8. THE GRAND CANYON BREWING COMPANY (WHITE ON
GOLD) | |
| 9. GRITTY'S (WHITE ON BLUE) | |
| 10. MILLER CHILL | |
| 11. MILLER HIGH LIFE | |
| 12. SCHELL'S BEER (WHITE ON BLUE) | |
| 13. TRUMER PILS BRAVEREI (BERKELEY CA BREWERY)
(BLACK ON SILVER)
G-85 | |
| 2. BUDWEISER / YANKEES (IN LOGO) 27 TIME WORLD
CHAMPIONS
G-88 | |
| 3. ALASKAN AMBER (PIC OF TUGBOAT) | |

- | | |
|---|---|
| <p>G-132
CAP LIFTER
3 5/8"
ERNIE THOMS
1. DESCHUTES BREWERY (BEND & PORTLAND OREGON)
G-133
CAP LIFTER
MADE IN CHINA
3 3/8"
MIKE KREJCI
1. MILLER LITE (LOGO) / SAME
G-134
CAP LIFTER
2 3/4"
MIKE KREJCI
1. MILLER GENUINE DRAFT COLD-FILTERED
G-135
CAP LIFTER
MADE IN CHINA
2 7/8"
MIKE KREJCI
1. ROLLING ROCK EXTRA PALE (HORSE LOGO) ALWAYS ENJOY RESPONSIBLY / SAME
G-136
CAP LIFTER
2 7/16"
MIKE KREJCI
1. SAMUEL ADAMS BOSTON LAGER (APRES SKI TEAM 8 TIMES AROUND EDGE) / SAME
G-137
CAP LIFTER
BASKETBALL SHAPE
1 11/16"
MIKE KREJCI
1. SAMUEL ADAMS
G-138
CAP LIFTER
3 1/8"
PAT STAMBAUGH
1. SCHELL'S BREWING CO. 1860 2010 150 ANNIVERSARY (ELK LOGO) (AUGUST SCHELL NEW ULM, MINN IN SMALL ROUND A S LOGO)
G-139
CAP LIFTER
5 3/4"
JOHN CARTWRIGHT
1. WIDMER HEFEWEIZEN
G-140
CAP LIFTER
2 1/16"
JOHN CARTWRIGHT
1. ODELL BREWING CO. (LOGO) COLORADO / 90 SCHILLING FORT COLLINS
G-141
CAP LIFTER
2 1/4"
JOHN CARTWRIGHT
1. DESCHUTES BREWING CO. (MOUNTAIN SCENE LOGO) BEND, OREGON / SAME
H-2
225. PRAIRIE BREW BOTTLING CO. GEORGE GRUBEL KANSAS CITY, KANSAS
226. WESTERN MALT & HOP CO. 6914 SO. WESTERN AVE. CHICAGO PHONE HEMLOCK 0948
H-3 CORRECTIONS
11. GRAND PRIZE SOUTH'S FAMOUS BEER (ADD "SOUTH'S" #339)
I-17
127. STEGMAIER BREWING CO. WILKES-BARRE, PA. / STEGMAIER-GOLD MEDAL BEER- 2 VAR (A) DOUBLE STROKE LETTERING (B) SINGLE STROKE LETTERING (#909)
I-20
38. WIEDEMANN'S FINE BEER</p> | <p>I-31
2. PABST BLUE RIBBON
J-13
3. ALLISON DIST. LONE STAR BEER & SCHLITZ BEER
K-2
10. FALSTAFF (SHIELD W/ NO STARS) (RED)
L-5
2. CHIEF OSHKOSH BEER SUPREME (PIC OF CHIEF) PILSENER (ALSO COMES WITHOUT CORKSCREW) (#909)
L-14
37. COORS BANQUET THE LEGEND SINCE 1873 A BRAND THAT HAS STOOD THE TEST OF TIME BREWED WITH 100% ROCKY MOUNTAIN WATER FOR A LEGENDARY TASTE WHEN THE MOUNTAINS TURN BLUE IT'S AS COLD AS THE ROCKIES (ON BODY LABEL) / BREWED WITH ROCKY MOUNTAIN WATER GOLDEN, COLORADO (WATERFALL LOGO-NECK LABEL)
38. GRAY'S BREWING CO. SINCE 1856 HONEY ALE ALL BUZZ NO BIYE (PIC OF BEE) ALE BREWED WITH 100% PURE HONEY (ON BODY LABEL) GRAY'S BREWING CO. HONEY ALE (PIC OF BEE) (ON NECK LABEL)
39. J. LEINENKUGEL BREWING CO. FAMOUS SINCE 1867 LEINENKUGEL'S ORIGINAL (INDIAN LOGO) THE PRIDE OF CHIPPEWA FALLS BREWED WITH THE SAME RECIPE BY FIVE GENERATIONS OF LEINENKUGEL'S
40. LEINENKUGEL'S CLASSIC AMBER (STANDARD BODY & NECK LABEL)
41. POINT NUDE BEACH SUMMER WHEAT (BEACH SCENE-BODY LABEL/POINT BREWERY (STANDARD NECK LABEL))
42. POINT OKTOBERFEST (NOTE SPELLING) MARZEN STYLE (OKTOBERFEST SCENE-BODY LABEL/POINT BREWERY (STANDARD NECK LABEL))
43. POINT ST. BENEDICT'S WINTER ALE (MONASTERY SCENE-BODY LABEL)/POINT BREWERY (STANDARD NECK LABEL)
44. SKYY BLUE
M-29
122. GO GO GO FOR FALSTAFF (CARTOON CHARACTER-COACH BOTTLE NOSE) FLASTAFF BEER CO. FRANK RUSS, DIST. BRENHAM - SEALY - COLUMBUS
123. HAMM'S BEER SEASON'S GREETINGS JOHN T. KARAKAS EVELETH, MN. 741-4670
124. SCHLITZ ON TAP EHLI RECREATION LIQUOR-WINE-POOL SUTTON, NEBRASKA (PIC OF MUG OF BEER)
M-30
188. SOUVENIR FROM DISASTER & SAFETY SERVICE DEPARTMENT DECEMBER 6, 1979 AT ANHEUSER-BUSCH COMPLIMENTS JOSEPH LIPIC PEN CO. LEONARD G. LIPIC PRESIDENT
189. BALLANTINE & GENESEE BEER FELIX ZAFFINA BEER DISTRIBUTOR SOFT DRINKS & SELF SERVICE ICE KINGVIEW ROAD 887-9430
190. SCHLITZ (IN LOGO) THE BEER THAT MADE MILWAUKEE FAMOUS SCHAEFER (IN LOGO) BALLANTINE (THREE RINGS LOGO) BEER CHOPTANK DISTRIBUTING CO. EAST NEW MARKET, MD. PHONE 943-4388
191. COMPLIMENTS RENO CALCARI STAG BEER (IN LOGO) MT. OLIVE CENTENNIAL 1865-1965
M-31
8. STERLING
M-38
13. LEINENKUGEL'S MARSH KITTELSON, DIST., OSSEO, WIS. PHONE 597-3916 (BLACK ON GREEN) (BLACK ON WHITE) (#909)
M-60
11. JUST FOR FUN DRINK K-B BEER IN CANS MONTANA DISTRIBUTOR PHONE 53 WOLF POINT, MONTANA
M-70
10. ANHEUSER-BUSCH, INC. ST. LOUIS, MO. (BLUE ON WHITE) / BUDWEISER LAGER LABEL (ON WHITE)
M-83
41. BUDWEISER KING OF BEERS, IN BOWTIE, COMPLIMENTS OF RED WING DIST. CO.</p> |
|---|---|

- | | |
|---|---|
| <p>M-89
12. HANDY BOTTLE OPENER FOR BUDWEISER TRADE MARK
REG. U. S. PAT. OFF. T. J. KELLY DISTRIBUTING
CO.</p> <p>M-136
3. MILLSTREAM BREWING CO. IOWA'S AWARD WINNING
BREWERY (WHITE ON RED)</p> <p>M-149
4. COORS / COORS 2008 MOLSON COORS GLOBAL PROPER-
TIES USED UNDER LICENSE BY NOVELTY, INC.
5. COORS LIGHT / COORS LIGHT 2008 MOLSON COORS
GLOBAL PROPERTIES USED UNDER LICENSE BY NOV-
ELTY, INC.
6. MILLER LITE (LOG) / SAME</p> <p>M-173
CAP LIFTER
5 5/8"
JOHN STANLEY
1. BUDWEISER (BOWTIE LOGO) (WHITE ON RED ON
WHITE)</p> <p>M-174
LUGGAGE STYLE TYPE
CAP LIFTER
3 3/8"
MIKE KREJCI
1. COORS LIGHT COLD CERTIFIED (THERMOMETER) /
COORS LIGHT COLD CERTIFIED</p> <p>M-175
WOOD HANDLE
CAP LIFTER/CAN PIERCER
MARKED "EDLUND CO. INC."
BURLINGTON, VT. U. S. A."
7 1/2"
MIKE KREJCI
1. CARLING (IN LOGO) / FT. WORTH, TEXAS AUG. 27,
1963</p> <p>M-176
CAP LIFTER/GARGOYLE
5 7/8"
JOHN CARTWRIGHT/MIKE KREJCI
1. STONE (PIC OF GARGOYLE) / EST. 1996</p> <p>N-9
54. HAMMS-REX-PABST-ROYAL BOHEMIAN RAINY LAKE BEV-
ERAGE CO. D. J. MCCARTHY-RAINER, MINN.</p> <p>N-11
20. AT YOUR CALL CENTRAL JERSEY DIST. CO. R. & H.
WURZBURGER & PILSNER BEER</p> <p>N-18
21. BEVERAGE SERVICE CO. HAMM'S BEER
22. HAMMS BEER DIST. CO. ASHLAND</p> <p>N-22
2. FONTENELLE BREWING CO. OMAHA, NEBR. METZ AND
ROBIN HOOD CERTIFIED BEERS (CHANGE "BREWERY"
TO "BREWING" #752)</p> <p>N-25
8. MILLER HIGH LIFE</p> <p>N-27
28. GRAIN BELT - BUDWEISER DWYER BEVERAGE CO.
29. TO A GOOD SPORTSMAN FROM HAMM'S SALES MANKATO,
MINNESOTA</p> <p>N-29
28. DRINK WEST VIRGINIA SPECIAL RED TOP - OLD GER-
MAN BEERS THE "B" COMPANY</p> <p>N-30
17. SAMUEL ADAMS (LOGO) THE BEST BEER IN AMERICA</p> <p>N-36
15. COMPLIMENTS OF H. "BOYD" NELSON AND THE GRAIN
BELT BOYS</p> <p>N-39
11. STORZ BEER SIOUX DISTRIBUTING CO. SIOUX CITY,
IOWA</p> <p>N-56
38. BUCKEYE SINCE 1838
39. COORS (NO LOGO)</p> | <p>N-103
2. HEMRICH BROS. BREWING CO. SEATTLE, U. S. A.
(MASTER BLADE MARKED DOLPHIN CUTLERY CO. NEW
YORK)</p> <p>N-104
5. MILLER LITE (2 VAR (A) IN ROUND LOGO (B) IN
OVAL LOGO) (#909)</p> <p>N-108
2. AUGUST SCHELL BREWING COMPANY NEW ULM, MN.
56073</p> <p>N-111
3. TO A GOOD SPORTSMAN FALSTAFF DISTRIBUTING CO.
4. TO A GOOD SPORTSMAN FROM LOWELL HAY GRAIN BELT
DISTRIBUTOR</p> <p>N-137
3. COORS (MOUNTAIN LOGO)
4. COORS LIGHT
5. MILLER (IN LOGO)
6. MILLER LITE (IN LOGO)</p> <p>N-139
3. PABST BLUE RIBBON (WHITE ON BLUE)
4. SIERRA NEVADA BREWING CO. (WHITE ON GREEN) (2
3/4" LONG)
5. YUENGLING (WHITE ON RED)</p> <p>N-147
2. COORS</p> <p>N-148
15. CONSUMERS BREWING COMPANY ERIE, PENNA.
16. WAYNE BREWING CO. ERIE, PA.</p> <p>N-153
4. BITTER ROOT BREWING .COM (PIC OF BOTTLE W/
22OZ.) HAMILTON, MONTANA</p> <p>N-165
CAP LIFTER/BADGE
MADE IN CHINA
2 1/2"
MIKE KREJCI/ART SANTEN
1. BUD LIGHT LIME (LOGO) (GRAY & WHITE ON GREEN)</p> <p>N-166
CAP LIFTER/FLASHLIGHT
2 7/8"
THOMAS BALANDA JR/JOHN STANLEY
1. BUD LIGHT
2. MILLER (GIRL IN MOON LOGO) MADE THE AMERICAN
WAY</p> <p>N-167
CAP LIFTER/KEY RING
MARKED "PAT.PEND/CHINA"
2 3/8"
JOHN STANLEY
1. BUDWEISER</p> <p>N-168
CAP LIFTER/SERRATED KNIFE/COCKTAIL FORK
MARKED "STAINLESS"
8 3/4"
MIKE KREJCI
1. (EAGLE IN A)</p> <p>N-169
CAP LIFTER/WRENCH
5"
JOHN STANLEY
1. COORS</p> <p>N-170
CAP LIFTER/GRILL CLEANER
14"
MIKE KREJCI
1. COORS (PIC OF FOOTBALL) OFFICIAL BEER SPONSOR
(NFL LOGO)</p> |
|---|---|

N-171

CAP LIFTER/KEY CHAIN CLIP
MADE IN CHINA
2 3/4"

JOHN STANLEY

1. COORS (MOUNTAIN LOGO) / @2008 MOLSON COORS GLOBAL PROPERTIES, LLC. USED UNDER LICENSE BY NOVELTY INC
2. COORS LIGHT / @2008 MOLSON COORS GLOBAL PROPERTIES, LLC. USED UNDER LICENSE BY NOVELTY INC
3. MILLER HIGH LIFE (LOGO) / @2008 MOLSON COORS GLOBAL PROPERTIES, LLC. USED UNDER LICENSE BY NOVELTY INC
4. MILLER LITE (LOGO) / @2008 MOLSON COORS GLOBAL PROPERTIES, LLC. USED UNDER LICENSE BY NOVELTY INC

N-172

CAP LIFTER/KEY CHAIN CLIP/COMPASS
3"

ART SANTEN

1. MICHELOB LIGHT BEER (SILVER ON BLUE)

N-173

CAP LIFTER/WATCH
9 3/4"

MIKE KREJCI

1. MILLER LITE (LOGO) / MILLER

N-174

CAP LIFTER/KEY CHAIN CLIP
3 1/16"

MIKE KREJCI/JOHN STANLEY

1. PYRAMID BREWERIES (PIC OF PYRAMIDS) / PYRAMID HAYWIRE HEFEWEIZEN UNFILTERED WHEAT ALE

N-175

CAP LIFTER/JAR REMOVER/GAS KEY
3 7/8"

TOM JOHNSON

(NOW OWNED BY PAT STAMBAUGH)

1. NEW PRAGUE BREWING CO.

N-176

CAP LIFTER/LANYARD
2 1/4"

MIKE KREJCI

1. SCHLITZ (GLOBE LOGO) THE BEER THAT MADE MILWAUKEE FAMOUS (SCHLITZ (LOGO) 31 TIMES ON LANYARD)

N-177

CAP LIFTER/STOPPER/WIRE BREAKER
MARKED "PAT. DEC 31, '07"
3"

DAVE TIMMER

1. SCHWAB'S PURE GOLD / HAMILTON, O.

N-178

CAP LIFTER/ICE CREAM SCOOP
10 1/4"

MIKE KREJCI

1. HENRY WEINHARD'S ROOT BEER

N-179

CAP LIFTER/CARABINER/LANYARD
DISCONNECTING CLASP
2 1/2'

JOHN STANLEY

1. MILLER LITE (LOGO) MILLER LITE BOTTLE MILLER LITE CAN (19 TIMES ON LANYARD)
26. DRINK GENESEE BEER AND ALE GENESEE ROCHESTER (PIC OF GENESEE MAN) HARD A' LEE
27. GRIESE DIECK BROS. PREMIUM LIGHT LAGER BEER (IN LOGO) NATURALLY SMOOTHER IT'S DE-BITTERIZED

O-4

52. GOETZ TODAY'S FINEST BEER
53. SCHMIDT'S CITY CLUB BEER
54. YORK BREWING CO. YORK, PA.

O-5

64. ABITA SPRINGS ABITA BEER (PIC OF 4 HOP STALKS)
65. BELL'S (3 BELL LOGO) (ON BOTTLE CAP)
66. BLUE MOON BREWING COMPANY (AROUND DIAMOND LOGO) (ON BOTTLE CAP)
67. BRICK BREWERY (PIC OF PIG) THE DISCOVERY NEVER ENDS (ON BOTTLE CAP)
68. BROOKLYN BROWN ALE (IN B LOGO) (DECAL)
69. BUD ICE (ON BOTTLE CAP)
70. BUD LIGHT (BL IN C LOGO) (ON BOTTLE CAP)
71. BUDWEISER (NO LOGO) (ON BOTTLE CAP)
72. BUDWEISER (IN BOWTIE LOGO) THE GREAT AMERICAN LAGER (ON BOTTLE CAP)
73. COORS BANQUET (MOUNTAIN LOGO) (ON BOTTLE CAP)
74. COORS LIGHT (MOUNTAIN LOGO) (ON BOTTLE CAP)
75. DESCHUTES BREWERY (MOUNTAIN LOGO) BEND, OREGON (DECAL)
76. (RIBBON LOGO) PRY OFF MICHELOB LIGHT BEER (ON BOTTLE CAP)
77. (RIBBON LOGO) MICHELOB ULTRA (ON BOTTLE CAP)
78. MILLER GENUINE DRAFT (ON BOTTLE CAP)
79. MILLER HIGH LIFE (IN LOGO) (ON BOTTLE CAP)
80. MILLER LITE (IN LOGO) TASTE PROTECTOR CAP LOCKS IN GREAT PILSNER TASTE (ON BOTTLE CAP)
81. OLD MILWAUKEE (IN LOGO) (ON BOTTLE CAP)
82. PABST BLUE RIBBON BEER (RIBBON LOGO) (ON BOTTLE CAP)
83. PIZZA PORT BREWING COMPANY (PIC OF GLASS) EST. 1991 TASTY GRUB & GROG SOLANA BEACH CARLSBAD SAN CLEMENTE OCEAN BEACH (DECAL)
84. ROLLING ROCK (HORSE LOGO) (ON BOTTLE CAP)
85. SUMMIT BREWING CO. (DECAL)
86. VICTORY BREWING COMPANY (LARGE V LOGO)

O-6

6. CHIEF OSHKOSH BEER B'GOSH IT'S GOOD! (IN LOGO)
7. GLOBE BREWING CO BALTIMORE IT HITS THE SPOT ARROW BEER (IN ARROW) ARROW ALE (IN ARROW) ARROW BEER (IN ARROW) ARROW ALE (IN ARROW)
8. HAMMS SMOOTH AND MELLOW BEER THEO HAMM BREWING CO. ST. PAUL 1, MINN.
9. THE NATIONAL BREWING CO. BALTIMORE, MD. NATIONAL BOHEMIAN (PIC OF MR. BOH) "OH BOY, WHAT A BEER"

O-7

2. (ON CAP CATCHER) BUDWEISER IN BOTTLES (EAGLE IN A LOGO) ANHEUSER-BUSCH ST. LOUIS (PIC OF GLASS OF BEER & BOTTLE OF BEER)

O-8

26. FOR YOUR HEALTH SAKE USE MONASTERY MALT NATIONAL FOOD CORP. PITTSBURGH, PA.

O-29

2. HAMMS-SCHLITZ-FALSTAFF RAY V. MITCHELL BEER DISTRIBUTOR SIOUX CITY-CHEROKEE, IOWA

P-1

19. LOUIS OBERT, ST. LOUIS.

P-8

249. AGENTS FOR SCHLITZ MILWAUKEE BOTTLED BEER / THE KENTUCKY LIQUOR CO. SALT LAKE CITY
250. PROSIT. STULZ BROTHERS / SAME

P-8 CORRECTIONS

17. COMPLIMENTS OF THE INDIANAPOLIS BREWING CO. / DUESSELDORFER BEER, GRAND PRIZE - CROSS OF HONOR, GOLD MEDAL (#752)

P-14

30. LINDAU DISTRIBUTING CO. BLATZ BEER
31. GRAIN BELT BEER L. BEAL - DIST.

P-15

26. NU GRAPE BOTTLING CO. RED TOP CINCINNATI BEER CHARLESTON, W. VA. DIST.

P-17 CORRECTIONS

8. THE LION BREWERY CINCINNATI, O. / SAME (2 VAR (A) STRAIGHT LETTERING WALKER BELL ROUND EDGE (B) CURVED LETTERING WILLIAMSON BELL FLAT EDGE) (#339)

- P-18
 11. MCKECHNIE'S CANANDAIGUA ALE CANANDAIGUA, N. Y.
- P-19
 167. BOTTLER OF THE CELEBRATED ANHEUSER-BUSCH BEER. R. VOGEL, SUCCESSOR TO H. LAUER WHOLESAL LIQUOR DEALER, 120-122 WASHINGTON ST. IOWA CITY, IOWA
 168. BECKER BREWING CO. BREWERS OF BECKER'S FAMOUS BEER. OGDEN, UTAH.
 169. "BUDWEISER BAR" CORNER 8TH. & JACKSON BEXT KATY DEPOT. F. H. WOYTEK, PROP. WACO, TEXAS.
 170. THE BUDWEISER CHAS. T. OLANDER, PROP. 122 WEST STATE ST. ROCKFORD, ILL.
 171. CRYSTAL SPRINGS BREWING & ICE CO. BOULDER, COL.
 172. LOS ANGELES BREWING CO. EASTSIDE BOHEMIAN PURE BEERS
 173. COMPLIMENTS OFFRANK P. CASEY, AGENT, NARRAGANSETT BREWING CO., NORTH SMITHFIELD, R. I. TEL. 322 L.
 174. AGENT FOR PABST BEER AND WHITE ROCK WATER, A. J. GUNTHER, WHOLESAL LIQUOR DEALER, A COMPLETE LINE OF IMPORTED BOTTLE GOODS CARRIED IN STOCK. HOT SPRINGS, - ARK.
 175. STULZ BROTHERS 818-820 SOUTHWEST BOULEVARD KANSAS CITY, MO. WILL SAVE YOU MONEY. (ON PAPER LABEL)
- P-26
 16. ANHEUSER-BUSCH (EAGLE IN A) / (EAGLE IN A) (STANHOPE) (BLUE & RED)
 17. BERGNER & ENGEL BREW. CO. / TANNHAUSER
 18. BUDWEISER (AB EAGLE) / 1876 2001 125 ANNIVERSARY (STANHOPE) (STEEL HANDLES)
- P-31
 13. ANHEUSER BUSCH BEER WINES & LIQUORS ALBIA, - - IOWA COMPLIMENTS OF MACK COON DEALER IN
- P-51
 82. IMPERIAL BOTTLING WORKS ??? TELEPHONE 1291 DENVER, COLORADO / (??? LOGO) (BOTTLED KAISER BEER)
- P-63
 2. ORANGE CRUSH BOTTLING CO. DISTRIBUTORS "PEARL" AND "TEXAS PRIDE" BEER SEGUIN, TEXAS
- P-101
 2. ANHEUSER-BUSCH BEER / COMPLIMENTS OF G. LONGENDYK KINGFISHER OKLA. (2 BLADES)
- P-134
 4. ANHEUSER-BUSCH / ???
- P-173
 2. BILL BELISLE-SCHAEFER BEER WHEN YOUR HAVING MORE THAN ONE
- P-193
 PICNIC CORKSCREW
 WOODEN SLEEVE
 (SEE P-98)
 MIKE KREJCI
 1. BUDWEISER (IN BOWTIE LOGO) KING OF BEERS (PIC OF MAN WITH CORKSCREW) I (PIC OF HEART) UGLY HELP FIGHT MULTIPLE SCLEROSIS M S
- P-194
 FOUR BLADE KNIFE/CORKSCREW/
 CAP LIFTER BLADE/
 FILE BLADE/PEN BLADE
 BOTTLE SHAPED
 EBAY
 1. BUDWEISER (CROWN LOGO)
- P-195
 THREE BLADE KNIFE/
 CORKSCREW/MATCH STRIKER
 MASTER BLADE/
 SPATULA BLADE/
 WIRE BREAKER BLADE
 STEEL HANDLES
 JOHN STANLEY
- (NOW OWNED BY NORM JAY)
 1. BARTHOLOMAE & ROESING BREWERS / A HAPPY NEW YEAR 1888
- P-196
 TWO TOOL FOLDING BOW/CORKSCREW/
 WIRE BREAKER BLADE
 MARKED "GESETZLICH GESCHUTZT (MEANS LEGALLY PROTECTED)
 MADE IN GERMANY"
 JOHN STANLEY
 1. BERGNER & ENGEL BREW. CO. / TANNHAUSER / EXPORT BEER
- P-197
 SIX BLADE KNIFE/CORKSCREW/
 AWL BLADE/
 CAP LIFTER-SCREWDRIVER BLADE/
 CAP-LIFTER-CAN OPENER BLADE/
 PEN BLADE/MASTER BLADE
 MARKED "VICTORINOX
 SWISS MADE STAINLESS"
 ART SANTEN
 1. (BUDWEISER CROWN LOGO) SELECT VICTORINOX (SWISS ARMY KNIFE LOGO)
- P-198
 ONE TOOL FOLDING BOW
 CORKSCREW
 GREG LOY
 1. VAN NOSTRAND'S P B ALE / BUNKER HILL LAGER
- P-199
 BARMOUNT CORKSCREW
 CRANK HANDLE
 FOR INSERTING & EXTRACTING CORK
 (SEE P-30,35,45,64,83,84,111,135)
 DESIGNED BY JOHN A. HURLEY
 MECHANICAL PATENT NOS
 . 348,743 & 348,911
 (09/07/1886)
 JOHN STANLEY
 1. SACHS, PRUDEN & CO. DAYTON, OHIO PATD. SEPT. 7. 86 (SEE ABII OH 177)
- Q-10
 50. COORS TECHNICAL SALES ADOLPH COORS CO. GOLDEN, CO. 80401 303/277/3772
 51. MILLER SOUND EXPRESS CATCH THE STARS FREE (RED ON WHITE)
- Q-11
 36. BUD LIGHT (C LOGO) (WHITE ON BLUE)
 37. BUDWEISER (IN CROWN BOWTIE) KING OF BEERS (WHITE ON RED)
 38. MILLER BREWERY TOUR MILLER MILWAUKEE, WI. USA 1-800-944-LITE WWW.SHOPMILLERBREWING.COM
 39. SILVER GULCH BREWING & BOTTLING CO. FAIRBANKS, ALASKA AMERICA'S MOST NORTHERN BREWERY (PIC OF MOUNTAINS) FINE ALES & LAGERS BREWED IN ALASKA (BLACK ON WHITE)
- Q-12
 83. LEINENKUGEL'S WWW.LEINIE.COM
 84. STEVENS POINT BREWERY BREWING EXCELLENCE SINCE 1857 (IN LOGO) PIC OF POINT CONEHEAD
 85. SUMMIT BREWING CO. (PIC OF BREWERY & 2 HOP STALKS) (WHITE ON GREEN)
- Q-15
 5. BUSCH HOME OPENER (PIC OF BASKETBALL)
- Q-18
 192. OTTER CREEK BREWING FINE ALES (YELLOW ON BLACK) (#158)
 227. PREMIUM (PIC OF WHEAT STALK) (WHITE ON BLUE) (WHITE ON GREEN) (WHITE ON LAVENDER) (WHITE ON PURPLE) (#909)
 183. SCHELL'S BEER (BLACK ON GREEN) (BLACK ON LAVENDER) (BLACK ON ORANGE) (BLACK ON PINK) (BLACK ON PURPLE) (BLACK ON RED) (BLACK ON WHITE) (BLACK ON YELLOW) (#909)

Q-18 CORRECTIONS

245. BEERMAN'S BEER WERKS (BLACK ON RED) (WERKS NOT WORKS) (#587)

Q-27

25. KONA BREWING CO. HAND CRAFTED ALES KONA HAWAII (LIZARD LOGO) / SAME (RED & YELLOW ON BLACK)

Q-30

7. ROLLING ROCK EXTRA PALE PREMIUM BEER

Q-31

137. LEINENKUGEL'S LEINIE LODGE CHIPPEWA FALLS, WISCONSIN (RED CANOE) (RED ON WHITE, WHITE ON GREEN)

Q-32

120. BUD PROUD TO BE AN ET LION (PIC OF SOCCER BALL AND GOAL) (BLUE & RED ON WHITE)

121. GRITTY'S (PIC OF BEER VAT) (WHITE ON GREEN)

122. RIVERSIDE BREWING CO. SUPPORT YOUR LOCAL BREWERY (GOLD ON BLACK)

123. WORMTOWN BREWING CO. (LARGE W) WORMTOWNBREWERY.COM (BLUE & RED ON WHITE)

Q-34

4. MATT'S (IN LOGO)

Q-36

103. DAVE'S ELECTRIC BREWPUB (IN LOGO) TEMPE, ARIZONA 5TH & COLLEGE 480-967-5353 (BLACK ON YELLOW)

97. GREAT DIVIDE BREWING CO. (BLACK ON ORANGE) (#752)

104. HUB CITY (PIC OF LOCOMOTIVE) BREWING COMPANY (WHITE ON BLACK)

Q-48

10. COORS LIGHT THE SILVER BULLET

Q-67

6. BUDWEISER (IN CROWN BOWTIE LOGO)

Q-83

2. MIKE'S HARD LIME TM (IN OUTLINE OF LIME)

Q-97

2. SAMUEL ADAMS AND TRADITION PASSION PRIDE (B B CO LOGO)

Q-110

TWIST-OFF CAP LIFTER
FOOTBALL SHAPE

MARKED "PAT. PEND. 1-888-254-1155 @ 2003"

2 3/8"

MIKE KREJCI

1. BUD LIGHT BUDWEISER BUD BOWL TAMPA 2009 (SHIELD LOGO) (PIC OF FOOTBALL)

Q-111

CAP LIFTER/TWIST-OFF CAP LIFTER

(SEE Q-30 & Q-70)

3 3/4"

JOHN STANLEY

1. BUDWEISER (B CROWN LOGO) (WHITE ON RED)

Q-112

CAP LIFTER/TWO MAGNETS

(SEE Q-11, 13, 53, 57, 97)

2 9/16"

MIKE KREJCI

1. COORS BELFAST GIANTS (RED & WHITE ON BLACK)

Q-113

CAP LIFTER
MAGNETIC BACK

5 1/4"

MIKE KREJCI

1. MILLER LITE (IN LOGO) CINCINNATI BENGALS 40TH ANNIVERSARY 1968 2007

Q-114

CAP LIFTER
RETRACTABLE BELT CLIP

3 15/16"

MIKE KREJCI

1. MILLER LITE (LOGO)

Q-115

CAP LIFTER

FOUR DETACHABLE KEY RINGS (BACK LATCH)
MADE IN CHINA

2 1/2"

ART SANTEN

1. RAMAPO VALLEY BREWERY EST. 2000 HILLBURN, NEW YORK (R B IN MOUNTAIN LOGO)

Q-116

LATCHED HOOK
(BELT CLIP/KEY RING)/

CAP LIFTER

(SEE Q-8 & Q-19)

3"

MIKE KREJCI

1. SCHLITZ (BOX LOGO)

R-26

8. COORS LIGHT (RED & WHITE ON GREY)

9. COORS LIGHT DRINK SAFELY (WHITE ON BROWN)

10. MILLER LITE (IN LOGO) (BLUE, RED & WHITE ON BROWN)

R-34

6. BUDWEISER (IN BOWTIE) (RED ON BLACK & WHITE SOCCER BALL)

R-36

9. YUENGLING (WHITE ON BROWN)

R-51

12. COORS LIGHT OFFICIAL BEER SPONSOR (NFL LOGO) SUPER BOWL XXXIX (IN LOGO)

R-52

2. MILLER LITE TRUE PILSNER BEER (IN LOGO) / SAME

R-53

2. KONA BREWING CO (IN LOGO) HAND CRAFTED KONA HAWAII (WHITE ON BLACK) (WHITE ON GREEN) (WHITE ON PURPLE)

R-61

2. BUDWEISER (CROWN) BUDWEISER OFFICIAL BEER / FIFA LOGO TM

R-71

4. ANDERSON VALLEY BREWING CO. WWW.AVBC.COM SOLAR POWERED BREWERY (PIC OF SUN) (GOLD, WHITE & YELLOW ON BLACK)

5. JACOB LEINENKUGEL BREWING COMPANY J L B C BIG "L" IN MIDDLE

R-79

2. MILLER HIGH LIFE THE CHAMPAGNE OF BEER (STANDARD BODY & NECK LABEL)

3. MILLER LITE (ON BODY & NECK LABEL)

R-82

KEG/TWIST-OFF CAP LIFTER

2"

BEN HOFFMAN/MIKE KREJCI/ART SANTEN

1. COORS LITE (MOUNTAIN LOGO) / (IN WORLD LOGO COORS OFFICAL LICENSED PRODUCT) @2008 MOLSON COORS GLOBAL PROPERTIES, LLC. COORS TRADEMARKS ARE PROPERTIES OF MOLSON COORS GLOBAL PROPERTIES, LLC, USED UNDER LICENSE BY NOVELTY INC.

2. MILLER / @2008 MILLER BREWING CO. ALL RIGHTS RESERVED. PRODUCED UNDER LICENSE BY NOVELTY, INC.

3. MILLER LITE (LOGO) / @2008 MILLER BREWING CO. ALL RIGHTS RESERVED. PRODUCED UNDER LICENSE BY NOVELTY, INC.

R-83

LIME WEDGE

CAP LIFTER

2 1/2"

ART SANTEN

1. B L LIME (PIC OF LIME) (LOGO)

R-84

PULL TAB FOR CAN

CAP LIFTER

MADE IN CHINA

2 1/2"

MIKE KREJCI/JOHN STANLEY

- 1. (B CROWN LOGO)
 - R-85
 - CAST IRON FISH
 - CAP LIFTER
 - 5 7/16"
 - BEN HOFFMAN

- 1. DOGFISH HEAD
 - R-86
 - HOME PLATE
 - CAP LIFTER
 - 2"
 - MIKE KREJCI/JOHN STANLEY

- 1. MILLER LITE (LOGO)
 - R-87
 - BOOT
 - CAP LIFTER
 - MADE IN CHINA
 - 2 3/4"
 - MIKE KREJCI

- 1. SAMUEL ADAMS SAMUEL ADAMS
 - R-88
 - HORSE
 - CAP LIFTER
 - MADE IN CHINA
 - 2 3/8"
 - MIKE KREJCI

- 1. MILLER GOOD CALL (GOLD ON BLUE)
 - R-89
 - FLIP FLOPS
 - CAP LIFTER
 - MADE IN CHINA
 - 9 3/4"
 - BEN HOFFMAN

- 1. MILLER LITE (LOGO) MILLER LITE (LOGO)
 - X-21
 - 2010 JFO CONVENTION OPENER
 - "STATE OF TEXAS SHAPE"
 - 3"
 - JEB BURRUSS/JOHN STANLEY

- 1. JUST FOR OPENERS 32ND ANNUAL CONVENTION APRIL

- 14-18, 2010 SAN ANTONIO, TEXAS DRINK ALAMO, LONE STAR AND PEARL BEERS (JUST FOR OPENERS J. F. O. IN FLAG LOGO)
 - Z-2

- 9. BUD LIGHT (LOGO) (WHITE ON BLUE)
- 10. BUDWEISER (CROWN BOWTIE LOGO) KING OF BEERS (WHITE ON RED)
- 11. DESCHUTES BREWERY ESTD. BEND, OREGON 1988
- 12. IRON CITY BREWING CO., PITTSBURGH PA. 12FL. OZ. 355ML. AUGUSTINER PREMIUM AMBER LAGER (A IN LOGO) SINCE 1861 (FORT LOGO)

A SINCERE THANK YOU TO THE FOLLOWING DEVOTED COLLECTORS WHO TOOK THE TIME TO SEND THEIR NEW ADDITIONS (UL'S) TO ME TO MAKE THIS LIST POSSIBLE. IT IS GREATLY APPRECIATED BY ALL MEMBERS.

MEMBER NAME & NUMBER (# LISTED)

- | | |
|---------------------------|--------------------------|
| TOM BALANDA JR 1061 (5) | LARRY MOTER 450 (1) |
| RAY BARBER RB (2) | PETE NOWICKI 67 (1) |
| MARK BARREN 406 (1) | JOHN PATTON 776 (1) |
| RAY BENNY 1075 (4) | DAVE PINNEY 811 (1) |
| KEITH BROWN 1062 (1) | HAROLD QUEEN 572 (22) |
| JOHN BURRUSS III 822 (11) | CARL REES 358 (6) |
| JOHN CARTWRIGHT 587 (30) | DON ROUSSIN 1049 (1) |
| BRIAN COOLEY BC (10) | ART SANTAN 158 (42) |
| EBAY 0 (40) | RICK SINNER RS (1) |
| JACK FORD 8 (2) | PAT STAMBAUGH 930 (10) |
| CRAIG GREEN 187 (1) | JOHN STANLEY 339 (29) |
| HERB HAYDOCK 13 (1) | SCOTT STANLEY SMS (1) |
| BEN HOFFMAN 261 (15) | DARVIN STILLWELL 980 (8) |
| ART JOHNSON 213 (1) | HARRIET WALDO 228 (1) |
| MIKE KREJCI 909 (107) | DON WILLIAMS 488 (1) |
| DAVE LENDY 804 (2) | SCOTT WILLIAMS 365 (3) |
| GREG LOY 752 (27) | |

**JFO #33 Cedar Rapids Iowa
BE THERE!!!**

**Anheuser-Busch Knives
at Dan Morphy Auction
(Denver PA January 22, 2011)**

You just never know as the three A-B knives to the right were offered as a single lot at a January Dan Morphy auction. The lot sold for \$517.50 (need to add a 17% buyer's premium). The bottom green handled knife was in fair condition, the top red handled knife was good but missing the Stanhope and the middle knife was excellent and has the "Flag Logo" on the reverse. Even considering condition someone stole these three knives. The flag knife alone has brought several thousand by itself before (obviously not in today's market) and the other two are both tough color variations for find. As always there are lots of bargains to be found, you just have to be in the right place at the right time. The same auction had a steel handle "champagne style" knife with ads for Schultz Beer and Quaker Maid Whiskey (in excellent condition) selling for \$138.00. WOW!!!



“Opener and eBay Trivia”

Another successful quarter for buyers and sellers on eBay with the fourth quarter of 2010 being very good for corkscrew collectors and an average one for opener collectors. There were no answers to questions posed in the October issue for questions. Please take the time to email or write me if you can offer any help to questions asked in the last issue or any previous newsletters. Share your information and knowledge.

A-004-030, Preferred Stock (Hamms), 4, \$108.05

A few of the A-4-30 openers have sold over the years for much less than the \$108.05 selling price for this one. The condition was only good. The A-4 just has Preferred Stock on it but I have always been told and assume it is a Hamm's beer opener.

A-015-999, Coca-Cola / Goldelle Ginger Ale, 6, \$130.00

Unlike the A-17 Coca-Cola opener with this same ad, the A-15 is much harder to find. The final price of \$130.00 was a good deal for the winning bidder.

A-021-110, Daniels, 8, \$5.99

A-021-999, Coca-Cola (Repro), 8, \$4.75

The A-21 Jack Daniels was made in the mid 1990s and the last quarter on eBay a couple of sellers offered many examples. The same was also true of the A-21 Coca-Cola opener. A lot of examples were sold but this one is a fantasy opener. They are both made of brass because it is a cheaper metal to use in the manufacturing process. The above listed prices are about what these two openers are worth.

A-030-003, Leinenkugel, 8, \$205.50

A really nice condition A-30 and only having seen a handful of the A-30-3 openers and this pair was the nicest I have seen. Some heavy bidders were in it but the horn was sounded by Krejci. Wouldn't you know it Art Santen had a mint pair in his collection that did sell for \$150.00.

A-033-999, Fred Hunt 95 N Main St, 6, \$102.50

One area that always amazes me is non-beverage openers that bring high dollars. This A-33 was a good example. Maybe someone named Fred Hunt wanted it but there seemed to be just an average flat figural opener.

A-040-001, Inland (Missing Key Ring), 4, \$171.59

The A-40 is a tough style to find no matter what the ad is. So a beer advertising one is especially hard to find but when the opener is missing the key ring end, I think \$171.59 is a high price to pay. But who knows maybe a complete example would have brought a lot more money.

A-053-999, Coca-Cola Goldelle Ginger Ale, 6, \$161.39

The ballerina legs mate to the A-15 saw a fair price realized. This leg opener with the Goldelle Ginger Ale ad is tough to find as most of the ballerina legs have a generic Coca-Cola ad.

B-001-014, Jenner, 8, \$166.66

This B-1 Jenner is the nicest example I have seen and brought a pretty good price considering how hard it is to find and then being in great shape made for some spirited bidding (see pictures).

B-001-029, Burkhardt, 4, \$198.50

On the flip side a decent condition B-1 Burkhardt went very high. With no paint the price really seemed out of line but it is one of the tough B-1s to find.

B-017-8UL, The Standard Mankato MN, 6, \$153.37

This B-17 was a UL because it has the word “The” on the opener. Minnesota collectors must have figured it out as the bidding ran up to a high price. I sold Pat Stambaugh a damaged B-17 with the same ad last fall for \$75.00. Pat, you got a deal.

B-021-493, Owyhee, 6, \$177.50

Art Santen listed this one originally and I am thinking that will be one of his openers that brings good money. Before I send the newsletter out, the above example appears on eBay and goes through the roof (really not that outlandish considering it being from a little Idaho brewery).

B-032-999, Coca-Cola Charleston SC, 6, \$150.00

Another opener that I thought I owned the only one and eBay ruined my rarity again. B-32s are little 2 inch openers that are neat. I do own five different ones with Coca-Cola ads. A very tough style to find with Coca-Cola advertising.

CBO-MIS-16, Cigars, 8, \$112.50

Mike Schwimmer has issued a 2008 update to his original CBO Handbook. This one above was one of the new styles. It is a brass opener and certainly a unique shape (see pictures). Many nice CBOs have been selling much cheaper the last couple of years but I liked this one and it went high at \$112.50.

E-004-999, Coca-Cola Wooster OH, 6, \$208.57

An unlisted soda opener and a heated bidding battle saw this E-4 finish at \$208.57. Coca-Cola E-4s almost always go for high dollars. Any other Coca-Cola wire style al-

“Opener and eBay Trivia”

most always brings a lot less. There is something about “the stick style” that Coca-Cola collectors like.

FBOC-032, Happy Hooligan, 4, \$227.55

Cast iron figural bottle openers have seen very few good examples sold on eBay the last couple of years. The reason I mention the “Happy Hooligan” is, it was one of Dale Deckert’s favorite cast iron styles. He was always talking about trying to find one and when he did trying to find more. It is one opener that to me is pretty ugly but everyone has their own favorites.

K-009-001, Blatz, 6, \$179.50

K-009-001, Blatz (Best Offer), 6, \$200.00

The K-9 Blatz is very desirable bar mount and several have turned up over the years but it is unusual to have two examples in one quarter on eBay. One can now assume that \$150-\$200 is a fair price for a K-9.

M-073-002, Missoula, 10, \$212.00

M-073-006, Kessler, 6, \$203.01

M-073-008, Kessler (BIN), 8, \$74.99

M-073-013, Heurich (BIN), 6, \$28.50

M-073-999, Gordon's Gin (Green), 6, \$169.49

The M-73s were very popular this quarter. Two beer ones went high and two good beer ones were “stolen” with very low Buy-It-Now prices. Josef L’Africain has the M-73-13 Heurich available for trade. The Art Johnson collection had the only known example of the Gordon’s Gin M-73 before the green one appeared this quarter on eBay.

N-103-8UL, Hemrich Bros Brewing Co, 6, \$145.55

John Cartwright was living right when he got this nice N-103-UL Hemrich Bros knife at a good but not cheap price. He then talked me out of my N-103-1 Spokane so he now has the “known set” of N-103 beer advertising knives.

O-001-999, Wagner 7Up Bottling Co, 8, \$112.49

An O-1 style use to be very hard to find with any kind of advertising but many of the O-1 Miller Beer have sold the last few years on and off eBay. I have this O-1 7Up opener and had not seen another before this one was sold last quarter. It was a huge surprise to see it crack the \$100.00 barrier. A couple of other style 7Up openers have brought good money but this O-1 was a big surprise at this price.

O-005-011, Acme, 6, \$104.84

O-005-023, Regal Pale, 6, \$159.95

O-005-028, Miller High Life, 8, \$207.50

O-005-999, Climax Beverages (Box), 10, \$168.50

O-005-999, Glascock Bottling Co, 6, \$260.55

O-005-999, Kelvinator, 6, \$187.50

O-005-999, Pep, 8, \$152.50

Starr X openers saw many of the tough ads ones sell and leading the way was the Glascock Bros. Bottling Co. from Muncie, Ind. Anything Glascock sells well. The most expensive O-5 beer ad openers was the Miller one and it was in the nicest condition of the few examples I have seen over the years. A welcome addition to someone’s collection and the other prices prove that Starr X openers are in an upswing cycle. They are bringing serious money again.

O-502-999, The Liquid (w/ Box), 10, \$263.79

O-505-999, Icy-O, 4, \$285.03

O-505-999, Whistle, 6, \$189.95

O-505-999, Whistle, 6, \$111.95

O-505-999, Whistle (BIN), 6, \$175.00

O-506-999, Pepsi=Cola, 6, \$153.00

O-507-999, Pepsi=Cola, 6, \$159.50

O-511-999, Coca-Cola (Hoof), 6, \$135.00

Just about any good wall mount this past quarter sold well on eBay. The Whistle prices are high considering several have been sold on eBay the past year. At one time it was hard to find but now they almost seem common. The side mount, “The Liquid”, is certainly common and should be in the \$50-\$100 even Mint-In-The-Box.

R-008-001, Kaiers, 8, \$510.00

There are two beer advertising cast iron wall mount openers, The R-8 Kaiers and the R-6 Sprenger. Depending on who you ask one is supposedly harder to find than the other. I had a much tougher time finding a Kaiers. The ending price of \$510.00 seemed reasonable considering today’s market and the condition of the piece which was excellent.

Z-Corkscrew, English 19thC Hulls Presto, 8, \$3,600.00

Z-Corkscrew, French 19thC Lever Modele Depose, 8, \$3,383.00

Z-Corkscrew, US 1878 Tucker Lever Patent, 6, \$1,580.55

Above are three of the higher results for corkscrews this quarter. Several good corkscrews were sold as another great ICCA Auction concluded in November. You may want to check the late spring auction on the ICCA web. Rare corkscrews continue to sell with high prices. Openers saw many mid-range examples this past quarter. eBay is continuing to change seller fees and the general word seems to be that many sellers are dropping off eBay. They are tired of the higher fees and everything being slanted in the buyer’s favor. It will be interesting to see what happens in the market during 2011.

“Opener and eBay Trivia” (“BIN” Buy-It-Now & “DNMR” Did Not Meet Reserve)

A-001-002, Aurora, 6, \$15.51	A-005-999, U S Bottling Co, 6, \$16.50	A-020-001, Enterprise, 6, \$31.78	A-021-999, Coca-Cola (Repro), 8, \$8.51
A-001-008, Globe, 6, \$15.00	A-005-999, Wolf Liquor Store McCook NE, 6, \$22.03	A-020-024, Belmont, 6, \$14.50	A-021-999, Coca-Cola (Repro), 10, \$10.50
A-001-008, Globe, 8, \$4.99	A-007-999, Carter Beverages, 6, \$10.51	A-020-027, Sebewaing, 6, \$25.58	A-021-999, Coca-Cola (Repro), 8, \$10.50
A-001-008, Globe, 8, \$10.50	A-007-999, Great Falls Bottlers, 6, \$15.50	A-020-039, Wayne, 6, \$12.50	A-021-999, Coca-Cola (Repro), 8, \$11.10
A-001-008, Globe (w/ B-24-57 Acme), 6, \$30.99	A-009-003, Hoster, 4, \$20.51	A-021-001, Becks, 6, \$4.36	A-021-999, Coca-Cola (Repro), 8, \$11.50
A-001-023, Graf, 6, \$7.16	A-009-004, Leisy, 6, \$9.99	A-021-005, Duquesne, 6, \$6.99	A-021-999, Coca-Cola (Repro), 8, \$11.50
A-001-025, Lembeck & Betz, 8, \$49.99	A-009-004, Leisy, 6, \$17.75	A-021-010, Ziegler, 6, \$58.09	A-021-999, Coca-Cola (Repro), 8, \$4.75
A-001-037, Golden Ribbon, 6, \$16.75	A-009-012, Ringle Var B, 6, \$28.01	A-021-035, West Virginia, 8, \$20.00	A-021-999, Coca-Cola (Repro), 8, \$5.99
A-001-037, Golden Ribbon (w/ B-14-28 Hauenstein), 6, \$13.71	A-009-022, Fresno (w/ A-35-5 Buffalo, B-19-95 Maier, B-22-38 Mathie), 6, \$79.99	A-021-083, Golden Glow, 6, \$11.08	A-021-999, Coca-Cola (Repro), 8, \$5.99
A-001-064, Great Falls, 2, \$4.99	A-009-999, New Reading Hotel Redaing PA, 6, \$14.25	A-021-110, Daniels, 8, \$5.99	A-021-999, Coca-Cola (Repro), 8, \$5.99
A-001-115, Kass Malt, 6, \$21.50	A-009-CAN, S Desormeaux Liqueurs St Jerome Quebec, 6, \$19.49	A-021-110, Daniels, 8, \$5.99	A-021-999, Coca-Cola (Repro), 8, \$5.99
A-001-999, B-1, 6, \$9.99	A-012-010, Beckers, 6, \$30.00	A-021-110, Daniels, 8, \$6.25	A-021-999, Coca-Cola (Repro), 8, \$5.99
A-001-999, Caton Ginger Ale, 8, \$9.99	A-012-024, Southern (w/ 12 Misc), 6, \$12.00	A-021-110, Daniels, 8, \$10.01	A-021-999, Coca-Cola (Repro), 8, \$5.99
A-001-999, Keen Drinks, 6, \$12.42	A-012-999, Coca-Cola / London Dry Ginger Ale (Real), 6, \$71.07	A-021-110, Daniels, 8, \$10.50	A-021-999, Coca-Cola (Repro), 8, \$5.99
A-001-999, Martinton Bottling Martinton WV, 6, \$13.50	A-012-999, F H Townley Jr Weiser ID, 6, \$39.11	A-021-110, Daniels, 8, \$3.26	A-021-999, Coca-Cola (Repro), 8, \$7.50
A-001-CAN, Pitzls Beer Estevan Saskatchewan, 6, \$12.26	A-012-999, Leland Hotel Mansfield OH, 6, \$19.50	A-021-110, Daniels, 8, \$3.76	A-021-999, Coca-Cola (Repro), 8, \$9.95
A-002-999, Grand Hotel Altoona PA, 6, \$12.50	A-012-999, USS Akron Duralumin, 6, \$40.98	A-021-110, Daniels, 8, \$4.99	A-021-999, Coca-Cola (Repro), 8, \$9.95
A-002-999, Pauls Bar Merrill MI, 6, \$7.00	A-013-999, Alco & Kline Cars Baltimore MD, 6, \$20.49	A-021-110, Daniels, 8, \$5.99	A-021-999, Coca-Cola (Repro), 8, \$9.95
A-002-999, Pla-Mor Recreation Hutchinson KS (w/ B-19-31 Rainier), 6, \$20.68	A-013-999, Edward Auto Co Wauertown NY, 6, \$22.02	A-021-110, Daniels, 8, \$6.25	A-021-999, Coca-Cola (Repro), 8, \$18.50
A-002-999, St Lawrence Beverage Co Hermon NY, 6, \$10.49	A-013-999, Gerber & Geib Soft Drinks & Lunch Candies & Ice Cream Strsburg, Ohio, 2, \$9.95	A-021-110, Daniels, 8, \$6.89	A-021-999, Coca-Cola (Repro), 8, \$5.00
A-003-002, Brumalt, 4, \$12.50	A-013-999, Keystone Auto Supply Atlantic City NJ, 6, \$25.29	A-021-110, Daniels, 8, \$7.02	A-021-999, Coca-Cola (Repro), 8, \$6.50
A-003-052, Stone Malt Co, 6, \$15.00	A-013-999, Meigs & Co Automobile Clothes, 8, \$56.55	A-021-110, Daniels, 8, \$9.00	A-021-999, Coca-Cola (Repro), 8, \$7.28
A-004-009, Leisy, 6, \$13.25	A-013-999, St Paul Phone 88, 6, \$12.99	A-021-110, Daniels, 8, \$11.06	A-021-999, Coca-Cola (Repro), 8, \$7.50
A-004-013, Akron, 6, \$10.49	A-013-999, Victory Tire Works #838 New York City, 6, \$20.49	A-021-110, Daniels, 8, \$11.72	A-021-999, Coca-Cola (Repro), 8, \$9.95
A-004-016, Southern Select, 6, \$68.07	A-013-999, Waupon Bottling Works Waupon WI, 4, \$27.01	A-021-110, Daniels, 8, \$19.38	A-021-999, Coca-Cola (Repro), 8, \$9.95
A-004-029, New Life, 4, \$5.55	A-013-AUS, Marles & Sons Ford Cars Bundaberg, 6, \$22.41	A-021-110, Daniels, 8, \$3.26	A-021-999, Coca-Cola (Repro), 8, \$12.50
A-004-030, Preferred Stock (Hams), 4, \$108.05	A-015-008, Fortune Bros, 2, \$26.50	A-021-110, Daniels, 8, \$4.69	A-021-999, Coca-Cola (Repro), 8, \$14.50
A-004-999, Cerveza Habana, 4, \$19.49	A-015-013, Terre Haute, 6, \$15.17	A-021-110, Daniels, 8, \$5.99	A-021-999, John Deere Waterloo Foundry, 6, \$22.72
A-005-001, Golden Ribbon, 6, \$19.99	A-015-013, Terre Haute, 6, \$24.59	A-021-110, Daniels, 8, \$6.50	A-021-999, Kasko Distillery Philadelphia PA, 6, \$6.00
A-005-010, Four Roses Malt, 6, \$9.99	A-015-013, Terre Haute, 6, \$5.50	A-021-110, Daniels, 8, \$6.75	A-021-999, Klamath Billiards Klamath Falls OR, 6, \$24.37
A-005-012, Buck, 6, \$14.50	A-015-999, Coca-Cola / Goldelle Ginger Ale, 6, \$130.00	A-021-110, Daniels, 8, \$9.95	A-021-999, Nelsonville Bottling Works Nelsonville WI, 6, \$12.50
A-005-015, Ideal Malt, 6, \$11.50	A-017-009, Ritter Brau, 6, \$24.99	A-021-110, Daniels, 8, \$9.95	A-021-999, The Shamrock Steaks & Seafood Roanoke VA, 6, \$21.50
A-005-016, Fossco Malt, 6, \$37.00	A-017-999, Vaughan Salesmen Sample, 8, \$9.16	A-021-110, Daniels, 8, \$9.95	A-025-010, Pittsburgh, 4, \$24.44
A-005-039, Wooden Shoe, 6, \$16.00	A-017-CAN, Huether Brewing, 6, \$37.00	A-021-110, Daniels, 8, \$10.50	A-028-020, Waynesboro, 6, \$28.51
A-005-045, Fossco Malt, 6, \$19.50		A-021-110, Daniels, 8, \$10.50	A-028-065, Schlitz (w/ 2 Misc), 6, \$15.49
A-005-103, Tip-Top Malt, 6, \$19.99		A-021-110, Daniels, 8, \$10.50	A-028-999, Palymyra Bottling PA, 6, \$10.49
A-005-8UL, Double M Malt Stores, 6, \$14.17		A-021-110, Daniels, 8, \$10.50	A-029-038, Old Vienna, 4, \$15.50
A-005-8UL, Stone Malt Co Cream of Life Malt, 6, \$23.00		A-021-110, Daniels, 8, \$10.50	A-029-044, Fox Head, 6, \$13.50
A-005-999, 1933 Chicago WFs (w/ Token), 6, \$38.98		A-021-110, Daniels, 8, \$10.50	A-029-057, Selden Malt (w/ 2 H-2 Nu-Grape), 6, \$18.50
A-005-999, Crystal Soda Co Holyoke MA, 6, \$25.49		A-021-110, Daniels, 8, \$10.50	A-029-076, Grossvater, 6, \$16.59

“Opener and eBay Trivia” (“BIN” Buy-It-Now & “DNMR” Did Not Meet Reserve)

- A-029-108, Pearl Foam, 6, \$62.51
- A-029-999, A J Cermak For Senator, 6, \$7.53
- A-029-999, Ginger Mint Julep, 6, \$10.99
- A-029-999, Pale Moon Louisville KY, 6, \$22.51
- A-029-999, Pepsi=Cola 5c , 6, \$23.25
- A-029-999, Pepsi=Cola 5c , 6, \$26.55
- A-029-999, Whistle , 8, \$14.99
- A-029-CAN, Roy-Wolf Brewing Co Limited Belleville, Ontario, 6, \$36.00
- A-030-003, Leinenkugel, 8, \$205.50
- A-032-003, Wooden Shoe 1986 JFO, 8, \$10.01
- A-033-999, Fred Hunt 95 N Main St, 6, \$102.50
- A-035-005, Buffalo, 6, \$7.56
- A-035-005, Buffalo, 6, \$13.58
- A-035-005, Buffalo, 6, \$15.50
- A-035-005, Buffalo (w/ A-9-22 Fresno, B-19-95 Maier, B-22-38 Mathie), 6, \$79.99
- A-035-013, Gilt Top, 6, \$12.38
- A-035-013, Gilt Top, 6, \$30.99
- A-035-8UL, Budweiser Arizona, 6, \$61.00
- A-035-999, Cody Garage Yellowstone Park Entrance Cody WY, 8, \$17.50
- A-035-999, Gay-Ola, 6, \$9.99
- A-035-999, Gay-Ola, 6, \$17.77
- A-035-999, Gay-Ola, 6, \$9.00
- A-035-999, Sher-A-Cola Lexington KY, 6, \$11.94
- A-038-004, Independent (w/ C-2-4 Independent & B-21-39 Duquesne), 6, \$141.38
- A-039-999, Crossroads Texaco Lebanon Route 1, 6, \$15.50
- A-040-001, Inland (Missing Key Ring), 4, \$171.59
- A-041-001, Medford, 4, \$74.44
- A-044-003, Schmidt, 6, \$7.99
- A-045-999, Esso Baltimore MD, 6, \$12.50
- A-053-999, Coca-Cola Goldelle Ginger Ale, 6, \$161.39
- A-056-001, Miller, 8, \$9.99
- A-070-003, Liberty, 6, \$27.52
- A-086-001, Budweiser, 10, \$7.50
- A-506-999, Orange Crush, 6, \$18.49
- A-506-999, Orange Crush, 6, \$28.90
- A-506-999, White Rock , 6, \$4.00
- A-509-999, Nehi, 6, \$10.01
- A-999-999, Goodyear Airplane, 6, \$29.99
- A-999-ENG, (Airplane Shape) Imperial Airways Idris Waters, 8, \$36.67
- B-001-005, Pittsburgh, 6, \$18.58
- B-001-005, Pittsburgh (2 Examples), 8, \$46.00
- B-001-005, Pittsburgh (Brass), 6, \$26.00
- B-001-014, Jenner, 8, \$166.66
- B-001-021, Fuhrmann & Schmidt, 4, \$89.99
- B-001-029, Burkhardt, 4, \$198.50
- B-002-001, Blatz (Steel), 6, \$16.28
- B-002-001, Blatz Var A, 6, \$21.50
- B-002-003, Edelweiss, 4, \$10.50
- B-002-006, Hamms, 6, \$73.10
- B-002-015, National, 8, \$29.00
- B-002-028, Feigenspan, 6, \$29.99
- B-002-034, Rainier, 6, \$28.22
- B-002-036, Wagner, 6, \$34.99
- B-002-044, East Side, 6, \$41.00
- B-002-999, Coca-Cola (Steel), 6, \$52.00
- B-002-999, Coca-Cola (w/ B-21-344 Grand Rapids), 4, \$31.34
- B-003-004, Edelweiss, 6, \$16.16
- B-003-006, Aurora, 8, \$53.00
- B-004-002, Scheidt, 6, \$12.01
- B-004-002, Scheidt, 8, \$17.00
- B-006-008, Scheidt, 6, \$20.49
- B-006-015, Hamms, 6, \$73.10
- B-006-999, Chancellor Cigars, 6, \$10.00
- B-006-999, Palace Saloon Montpelier ID, 6, \$88.75
- B-007-999, A Merry Xmas & Happy New Year, 6, \$28.00
- B-007-999, Ben Hur Cigars, 6, \$14.27
- B-007-999, Virginia Bottling Co (Missing Hook), 6, \$7.06
- B-008-004, Home Rule Malt, 6, \$16.28
- B-013-006, Griesedieck Bros, 6, \$9.99
- B-013-007, Haberle, 6, \$16.01
- B-013-018, Graf, 6, \$4.95
- B-013-046, Buckeye, 6, \$3.99
- B-013-999, Blank (14K Gold), 8, \$177.75
- B-013-999, Chez Pierre Ginger Ale, 6, \$26.10
- B-013-999, Fontaine Ferry Louisville KY, 6, \$18.39
- B-013-999, Old Barbee Whiskey, 6, \$16.00
- B-013-999, Pacific Bar Butte MT, 6, \$13.77
- B-013-999, Sun Ray Ginger Ale, 6, \$5.24
- B-014-003, Berghoff, 6, \$3.30
- B-014-014, Frankenmuth, 6, \$5.50
- B-014-028, Hauenstein, 6, \$26.01
- B-014-028, Hauenstein (w/ A-1-37 Golden Ribbon), 6, \$13.71
- B-014-028, Hauenstein (w/ B-19-158 Hauenstein & B-19-170 Minneapolis), 6, \$34.13
- B-014-037, Pittsburgh, 4, \$19.99
- B-014-037, Pittsburgh, 6, \$9.00
- B-014-037, Pittsburgh, 6, \$9.99
- B-014-039, Mathie-Ruder, 6, \$10.06
- B-014-043, South Fork, 6, \$70.09
- B-014-045, Washington, 6, \$10.49
- B-014-064, Bixels, 6, \$13.55
- B-014-084, Gipps , 6, \$54.99
- B-014-095, Hoster, 6, \$14.50
- B-014-113, Hensler, 6, \$34.33
- B-014-114, Hoster, 6, \$8.52
- B-014-158, Gipps Barlo, 6, \$78.99
- B-014-175, Montana, 6, \$29.69
- B-014-8UL, Atlas Brew Victor IA, 8, \$56.01
- B-014-999, Berkeley Club Ginger Ale, 6, \$10.51
- B-014-999, Heisers Bar Baker MT, 6, \$5.50
- B-014-999, Lincoln Bottling Co Lincoln IL, 6, \$1.99
- B-014-CAN, Champlain Special, 8, \$9.99
- B-014-CAN, Champlain Special, 8, \$9.00
- B-014-CAN, Silver Spring Beer Victoria BC, 6, \$8.05
- B-015-CAN, Dawes Black Horse Ale , 6, \$9.99
- B-016-003, German, 6, \$47.99
- B-017-8UL, The Standard Brewing Co Mankato MN, 6, \$153.37
- B-018-009, Buffalo Co-Op, 4, \$17.99
- B-018-023, Dubuque, 6, \$10.50
- B-018-025, Duquesne (May Be Another #), 6, \$10.41
- B-018-035, Grand Rapids , 6, \$47.99
- B-018-055, Olympia #8846, 4, \$20.45
- B-018-063, Pointer, 6, \$5.54
- B-018-107, Hamms, 6, \$7.60
- B-018-118, Schmidts, 6, \$5.24
- B-018-133, Capital, 4, \$19.99
- B-018-203, Narragansett, 6, \$12.51
- B-018-213, Radeke, 6, \$22.38
- B-018-239, Zangs (w/ 6 Misc), 6, \$42.11
- B-018-270, Flocks (w/ C-13-268 South Fork), 6, \$11.15
- B-018-288, National, 6, \$11.10
- B-018-335, Kiewel (w/ E-14-391 Kiewel), 6, \$20.51
- B-018-346, Blatz (?????) (w/ Misc B-13), 6, \$42.00
- B-018-362, Hand, 4, \$12.50
- B-018-403, Wilbur, 2, \$20.51
- B-018-443, Bavarian, 4, \$33.57
- B-018-462, Voigt , 4, \$51.51
- B-018-582, Kamm & Schellinger, 6, \$32.11
- B-018-999, Buffalo, 6, \$6.27
- B-018-999, Eskimo Pop, 6, \$6.50
- B-018-999, Simpson Spring Fine Temperance Beverages, 6, \$13.49
- B-018-UL, Oswald, 6, \$45.60
- B-019-002, Bartels, 6, \$7.26
- B-019-014, Gund, 4, \$8.72
- B-019-023, Maier, 4, \$12.55
- B-019-031, Rainier (w/ A-2 Plamor), 4, \$20.68
- B-019-032, Robinson, 6, \$9.01
- B-019-035, Maier (w/ A-9-22 Fresno, A-35-5 Buffalo, B-22-38 Mathie), 6, \$79.99
- B-019-038, Wieland, 6, \$13.01
- B-019-039, Wilhelm Schim & Ramsey, 4, \$8.51
- B-019-078, Engesser, 6, \$54.76
- B-019-078, Engesser (w/ 3 Misc), 6, \$20.60
- B-019-078, Engesser (w/ H-2-126 Engesser), 6, \$76.67
- B-019-113, Blumer, 4, \$5.89
- B-019-134, Pittsburgh, 6, \$6.75
- B-019-155, Willow Springs, 8, \$26.76
- B-019-158, Hauenstein (w/ B-14-28 Hauenstein & B-19-170 Minneapolis), 6, \$34.13
- B-019-170, Minneapolis (w/ B-14-28 Hauenstein & B-19-158 Hauenstein), 2, \$34.13
- B-019-228, Bartels, 6, \$11.99
- B-019-228, Bartels, 6, \$13.26
- B-019-999, Mayville Bottling Works Mayville WI, 6, \$20.50
- B-021-004, Bartels, 6, \$11.00
- B-021-008, Cleveland & Sandusky, 6, \$10.54
- B-021-008, Cleveland & Sandusky, 6, \$20.00
- B-021-016, Evansville, 6, \$11.49
- B-021-022, Cleveland & Sandusky, 6, \$4.51
- B-021-024, Grand Rapids , 6, \$14.80
- B-021-029, Hopsburger, 4, \$25.49
- B-021-034, Hyde Park (w/ E-14-157 Hyde Park), 6, \$20.50
- B-021-037, American, 6, \$9.59
- B-021-038, Mathies, 6, \$6.51
- B-021-039, Independent (w/ Package), 8, \$27.74
- B-021-049, Maltosia, 6, \$9.38
- B-021-061, Olt, 4, \$14.56
- B-021-063, Quadts, 6, \$21.03
- B-021-076, Schlitiz (2 Examples), 6, \$12.79
- B-021-113, Jung, 4, \$9.83
- B-021-121, Oakland, 6, \$15.49
- B-021-144, Auto City Var B, 6, \$66.00
- B-021-183, Mutual Union, 6, \$11.51
- B-021-208, Schmidts, 6, \$23.50
- B-021-226, Blumer (End Filed), 2, \$12.51
- B-021-236, Crescent, 6, \$16.09
- B-021-250, Hack & Simmon, 6, \$21.50
- B-021-262, Independent (w/ Package), 10, \$34.73
- B-021-268, Krantz, 4, \$25.25
- B-021-268, Krantz, 6, \$37.55
- B-021-344, Grand Rapids (w/ B-2 Coca-Cola), 4, \$31.34
- B-021-346, Hart (w/ C-36-6 Hart), 6, \$11.49
- B-021-462, Akron, 6, \$12.54

“Opener and eBay Trivia” (“BIN” Buy-It-Now & “DNMR” Did Not Meet Reserve)

B-021-462, Akron, 4, \$11.54	\$9.99	C-012-052, Tannenbaum, 6, \$10.00	CBO-PKT-07, S Valentine & Son Philadelphia, 6, \$17.17
B-021-473, Northampton, 4, \$13.50	B-025-001, Michel, 6, \$16.54	C-012-066, Hawaii, 6, \$51.60	CBO-RBO-05, Charles Staud Cigars, 6, \$13.10
B-021-484, Goetz, 6, \$15.51	B-027-001, Miller (Steel), 6, \$41.01	C-012-092, Peerless, 6, \$8.51	CBO-RND-03, Osmundo Cigar Co, 6, \$16.60
B-021-493, Owyhee, 6, \$177.50	B-027-001, Miller Var A, 6, \$22.06	C-012-092, Peerless, 6, \$15.00	CBO-RND-11, Blank (No Ad), 6, \$48.49
B-021-494, Paducah, 6, \$11.01	B-027-006, Furniture City (Listed Under Coca-Cola Openers), 4, \$20.50	C-012-116, Wayne (w/ E-14-457 Wayne), 6, \$9.01	CBO-SEP-02, Red Robber George Light Binghamton NY (Box), 10, \$47.99
B-021-537, Decatur, 6, \$23.00	B-027-999, Aldrich Bottle Openers NY, 8, \$33.99	C-012-125, Knapstein, 6, \$8.30	CBO-SEP-05, Dexter Cigars, 6, \$42.57
B-021-999, Crown Bottling Works Pool Hall Drake ND, 6, \$5.52	B-031-999, (Similar But Thinner) Hagstrom Spark Plugs, 6, \$31.09	C-012-129, Malt City, 4, \$29.00	CBO-SHM-03, Muriel Cigars, 6, \$9.99
B-021-999, Home Ranch Saloon Cheyenne WY, 6, \$24.00	B-032-999, Coca-Cola Charleston SC, 6, \$150.00	C-012-145, Marathon, 6, \$15.00	CBO-SHM-04, Sycamore Cigars, 6, \$17.01
B-021-999, Magnolia Soda Water El Paso TX, 6, \$9.04	B-033-002, Heileman, 4, \$5.50	C-012-147, St Marys (w/ C-13-129 Elk), 6, \$57.69	CBO-SHM-09, First American Cigars, 6, \$74.00
B-022-001, American, 4, \$5.99	B-033-002, Heileman, 4, \$14.00	C-013-034, Feckers, 4, \$17.55	CBO-SHM-09, Goldsteins Cigars, 6, \$56.00
B-022-004, Falstaff, 6, \$6.66	B-033-002, Heileman, 6, \$5.22	C-013-056, Hamms, 8, \$31.01	CBO-SHM-10A, Germany Bremen, 6, \$11.50
B-022-014, Minneapolis, 6, \$20.49	B-036-004, Standard Malt, 6, \$7.60	C-013-120, Zieglers, 6, \$6.00	CBO-SHM-21, British Cigar Opener & Clippers, 6, \$45.54
B-022-021, Alpen Brau, 6, \$10.85	B-036-009, Stone Malt, 4, \$9.60	C-013-129, Elk (w/ C-12-147 St Marys), 6, \$57.69	D-001-001, A B B A Var A, 6, \$15.50
B-022-038, Mathie (w/ A-9-22 Fresno, A-35-5 Buffalo, B-19-95 Maier), 6, \$79.99	B-040-999, NuGrape, 6, \$12.50	C-013-169, Consumers, 4, \$2.99	D-001-001, A B B A Var A, 6, \$13.25
B-022-999, Coca-Cola Bottling Works Nashville, 6, \$72.07	B-040-999, Pepsi-Cola, 6, \$4.75	C-013-194, Star, 6, \$20.50	D-001-001, A B B A Var B, 6, \$9.99
B-023-005, Centlivre, 6, \$36.58	B-042-014, R & H, 6, \$34.60	C-013-255, Mexicali Malt, 6, \$45.87	D-001-001, A B B A Var B, 6, \$12.51
B-023-023, Chief Oshkosh, 6, \$9.99	B-042-999, Chero-Cola, 6, \$36.33	C-013-268, South Fork (w/ B-18-270 Flocks), 6, \$11.15	D-001-001, A B B A Var B, 6, \$9.99
B-023-027, Schreiber, 4, \$8.50	B-042-999, Chero-Cola 5c, 6, \$21.05	C-013-270, Wiedemann, 8, \$15.27	D-001-008, Storz, 6, \$19.99
B-023-056, Olympic Club, 6, \$10.55	B-046-999, Spanish Life Cigars, 6, \$7.46	C-014-001, Buckeye, 8, \$19.69	D-002-006, Schlitz, 6, \$4.28
B-023-073, Michel, 6, \$15.00	B-053-001, Gipps, 4, \$22.21	C-017-006, Gretz, 6, \$22.50	D-002-006, Schlitz, 6, \$15.06
B-023-145, White Rose, 6, \$15.25	B-053-002, Richter, 6, \$56.60	C-018-999, Vernors Ginger Ale, 6, \$20.50	D-003-021, Reisch, 6, \$19.50
B-023-999, Erie Club Ginger Ale (Spinner) (w/ A-5 Taylor Products & A-29 Saegertown), 6, \$21.49	B-053-999, Gunby & Quillow Garage Berlin MD, 6, \$24.50	C-018-999, Vernors Ginger Ale (1946 Anniversary), 6, \$12.47	D-003-AUS, Tooths White Horse Ale, 6, \$30.76
B-023-999, Griswold Hotel Sea Food, 6, \$23.49	B-999-999, (Actual Key w/ Opener in Handle) Independent Lock Co, 6, \$22.50	C-020-011, Wehle, 6, \$18.01	D-003-ENG, Baby Bulldogs, 6, \$20.50
B-023-999, Mathes Co Burlington IA, 6, \$25.55	B-999-999, (Elephant Head) 1933 Chicago WFs, 6, \$13.50	C-020-999, Veeder Root Co 1938, 6, \$17.05	D-003-ENG, Fosters Bugle Brand, 6, \$9.95
B-023-999, Verne Wallrath Confectionary North Mankato MN, 6, \$14.00	B-999-999, (Flashlight Shape w/ B-30 Opener End) Eveready Flashlights, 8, \$20.49	C-023-001, Jackson, 6, \$15.50	D-003-FOR, Seven Up, 6, \$9.99
B-023-CAN, North West Brewing Edmonton, 6, \$9.45	B-999-999, (Similar B-13 w/ Knife) 1933-34 Chicago WFs, 6, \$16.05	C-036-006, Hart (w/ B-21-346 Hart), 6, \$11.49	D-007-001, Peru, 6, \$21.50
B-024-003, Berlin, 6, \$9.50	B-999-999, (w/ Jar Opener) William Tate Sioux Falls SD, 6, \$23.50	C-049-8UL, Primo Beer, 10, \$15.50	D-009-002, Delta, 6, \$36.77
B-024-012, Effinger, 6, \$9.99	C-001-004, Scheidt, 6, \$25.00	C-999-FOR, Coke (Bottle Shaped Handle), 6, \$28.99	D-012-004, Ruppert, 6, \$4.99
B-024-017, Griesedieck Bros, 8, \$11.51	C-002-001, Phoenix, 6, \$15.00	CBO-BB-05, Ottina Havana Cigars, 6, \$8.16	D-012-004, Ruppert, 6, \$7.16
B-024-023, Mathie (2 Openers Var A & B), 6, \$20.60	C-002-001, Phoenix, 8, \$49.99	CBO-BB-16, Rocky Ford 5c Cigar, 6, \$39.99	D-017-001, Rolling Rock, 8, \$4.99
B-024-026, Narragansett, 8, \$4.99	C-002-001, Phoenix, 8, \$69.00	CBO-BUT-03, Red Dot Cigars, 6, \$9.99	D-999-999, 1933 Chicago WFs, 6, \$24.99
B-024-041, Capitol, 6, \$7.25	C-002-004, Independent, 6, \$78.00	CBO-HK-04, Rosedale Cigars, 6, \$10.50	E-002-029, Montana, 6, \$36.00
B-024-052, Mathie, 8, \$8.00	C-002-004, Independent (w/ A-38-4 Independent & B-21-39 Duquesne), 6, \$141.38	CBO-HK-06, Round Oak Cigars Keokuk IA, 6, \$18.35	E-002-999, Pureoxia Ginger Ale, 6, \$3.00
B-024-057, Acme (w/ A-1-8 Globe), 6, \$30.99	C-005-011, Cleveland & Sandusky, 6, \$6.94	CBO-HK-06, Spokane Club Cigar, 6, \$6.99	E-003-045, Acme, 2, \$10.59
B-024-072, Wausau, 6, \$40.09	C-005-015, Wagner, 4, \$14.09	CBO-HK-09, Winecke & Doerr, 6, \$17.49	E-003-066, Stutz, 6, \$7.08
B-024-072, Wausau, 4, \$9.99	C-010-006, Dotterwyck, 6, \$18.50	CBO-HT-01, Mendotta IL, 6, \$37.00	E-003-066, Stutz, 6, \$15.50
B-024-075, Becker, 8, \$45.99	C-011-002, Independent, 8, \$6.79	CBO-HT-04, Coldwater Cigar Box Factory, 6, \$28.77	E-004-015, Buckeye, 6, \$27.53
B-024-076, Blue 'n Gold, 8, \$39.99	C-011-002, Independent, 6, \$6.58	CBO-HT-07, La Vendor Havana Cigars, 6, \$20.51	E-004-082, Schneiders, 6, \$4.52
B-024-086, Hamms, 4, \$4.99	C-011-025, Pilseners, 6, \$5.91	CBO-HT-09, Thoroughgood & Co Cigars, 6, \$9.99	E-004-111, Eichler, 6, \$6.53
B-024-999, Coca-Cola In Bottles, 6, \$25.89	C-011-039, Buckeye, 6, \$5.91	CBO-MIS-03, Follets Cigars, 6, \$11.99	E-004-127, Muesel, 8, \$11.05
B-024-999, Coca-Cola Springfield MO, 6, \$31.99	C-011-044, Peacock Ale, 4, \$25.60	CBO-MIS-14, George Washington (Figural Hatchet), 6, \$22.50	E-004-155, Wooden Shoe, 2, \$18.01
B-024-999, Freds Beer & Tobacco Paul ID, 6, \$14.09	C-011-CAN, Black Horse Ale Beer, 6, \$10.50	CBO-MIS-16, Cigars, 8, \$112.50	E-004-172, Hoffman, 6, \$8.99
B-024-999, Whites Tavern Havard ID, 6, \$16.09	C-012-013, Regal, 8, \$12.62		E-004-256, Happy Days, 4, \$7.49
B-024-CAN, Boswell Bier, 6,			E-004-278, Grossvater, 6, \$12.49
			E-004-280, Peoples, 6, \$76.01

“Opener and eBay Trivia” (“BIN” Buy-It-Now & “DNMR” Did Not Meet Reserve)

E-004-999, Coca-Cola Wooster OH, 6, \$208.57	E-014-552, Sicks, 8, \$11.50	G-001-004, Buckeye (3 Exam- ples), 6, \$22.22	H-011-001, Adler Brau, 6, \$5.10
E-004-999, Nehi / Party Pack, 6, \$2.00	E-014-864, Queen City, 6, \$9.99	G-001-012, Grand Prize, 4, \$9.00	I-007-058, St Claire, 8, \$22.54
E-004-999, Nehi Bottling Co , 6, \$6.56	E-017-999, Pure Pop Co McComb IL (w/ 2 Misc), 6, \$24.45	G-001-021, Pabst, 6, \$7.05	I-007-999, Dole Pineapple Juice, 6, \$9.99
E-004-999, Norka Beverages (From Akron OH), 6, \$22.55	E-018-006, Roessle, 6, \$31.00	G-001-021, Pabst, 6, \$8.04	I-009-001, Waldorf, 6, \$5.00
E-005-146, Lone Star, 6, \$12.99	E-019-006, Fitgers, 4, \$26.00	G-001-999, Pepsi=Cola 5c , 6, \$20.79	I-009-001, Waldorf, 6, \$6.99
E-005-999, Coca-Cola Salesman Sample L-9, 8, \$9.57	E-021-999, Crown Ginger Beer, 6, \$6.51	G-003-005, Engleking, 8, \$9.99	I-009-002, Fox, 6, \$9.99
E-005-999, Coca-Cola Salesman Sample L-9, 8, \$12.78	E-022-999, Kist Beverages, 6, \$12.49	G-004-999, Royal Crown Cola, 6, \$10.50	I-019-015, Blatz , 6, \$2.50
E-005-999, Pepsi-Cola Bottling Co Columbus MS, 8, \$63.00	E-022-999, Mason Bros Sodas Mt Pleasant IA, 6, \$10.49	G-005-043, Lion, 4, \$34.99	I-020-006, Hamm's, 6, \$5.24
E-006-007, Bohemian, 6, \$5.99	E-023-002, Capitol, 6, \$45.77	G-005-050, West Side, 6, \$66.51	I-024-001, Fox De Luxe, 6, \$9.99
E-006-037, Mitchell, 6, \$22.72	E-023-006, Home (w/ 2 Misc), 6, \$9.00	G-005-999, Coca-Cola, 6, \$7.53	I-501-999, Donald Duck Soda, 6, \$10.00
E-006-066, Burger, 6, \$8.79	E-023-012, New South (BIN), 4, \$20.00	G-005-999, Nehi, 6, \$14.99	K-002-002, Falstaff, 6, \$41.00
E-006-086, Renner, 6, \$3.99	F-002-022, Falstaff, 6, \$5.99	G-005-999, Satanet, 6, \$8.58	K-002-003, Jackson, 6, \$64.99
E-006-091, Tube City, 6, \$6.50	F-002-029, Sweetwater, 6, \$9.99	G-009-033, DuBois Budweiser, 6, \$29.00	K-002-003, Jackson, 8, \$67.88
E-006-093, Fredericksburg, 6, \$1.75	F-002-038, Falstaff, 6, \$9.95	G-009-056, Schreiber, 6, \$19.99	K-002-003, Jackson, 4, \$35.51
E-006-120, Peerless, 6, \$11.01	F-002-999, Drink Coca-Cola In Bottles, 4, \$61.07	G-009-103, Stoneys, 6, \$25.49	K-002-005, Regal, 4, \$53.83
E-006-151, Hop Gold, 6, \$12.55	F-002-999, Swastika Hotel NM, 8, \$29.99	G-009-999, Pepsi-Cola, 6, \$9.99	K-002-007, Regal, 4, \$125.00
E-006-151, Star, 6, \$17.09	F-004-002, Iroquois, 6, \$17.02	G-013-010, Rahr, 6, \$9.99	K-003-001, Rheingold, 8, \$7.51
E-006-999, Gosman's Ginger Ale, 6, \$0.99	F-005-020, Bethlehem Malt, 6, \$9.00	G-013-CAN, John Labatt LTD, 6, \$4.99	K-003-001, Rheingold, 8, \$7.51
E-006-999, Pepsi-Cola Hardings, 6, \$7.99	F-005-026, Nicollet Malt, 6, \$9.99	G-025-002, Schlitz/Coca-Cola, 8, \$41.07	K-003-001, Rheingold, 6, \$8.01
E-007-002, Burkhardt, 6, \$9.99	F-005-999, Coca-Cola In Bottles, 6, \$66.00	G-025-999, Hansford Club Soda, 8, \$9.95	K-004-001, Pabst, 6, \$108.50
E-007-999, Coca-Cola In Bottles, 6, \$2.99	F-005-999, Drink Lake's Celery / Same, 6, \$7.95	G-028-8UL, Deckman's- Schmidt's Beer 243-2266 Carlisle, Pa., 6, \$2.99	K-004-001, Pabst Var B, 6, \$51.00
E-007-999, Mohr Bros Special Toledo OH, 6, \$8.49	F-006-022, Arrow , 6, \$14.99	G-034-001, Belmont , 6, \$7.65	K-005-002, Schlitz , 6, \$14.99
E-007-999, Orange Crush, 6, \$7.99	F-006-049, Broadway, 6, \$46.55	G-999-999, (Badge Style) Pepsi=Cola (Bottle Cap), 6, \$30.00	K-005-002, Schlitz (Gray), 6, \$12.95
E-008-013, Berlin (w/ 2 Misc E- 14s), 6, \$8.58	F-006-CAN, Dow Old Stock Ale, 6, \$15.50	H-001-013, Sunshine (w/ Coaster), 6, \$8.50	K-005-002, Schlitz (Gray), 6, \$22.52
E-008-017, Fink, 6, \$13.00	F-007-003, Bubs Var A, 6, \$15.14	H-001-052, Engesser, 6, \$32.00	K-005-003, Pabst, 8, \$34.88
E-008-050, Bachrach Feld Malt, 6, \$21.49	F-007-004, Olympia, 6, \$6.99	H-002-051, Yuengling, 6, \$70.00	K-009-001, Blatz, 6, \$179.50
E-008-069, Atlas, 6, \$8.59	F-007-8UL, Falstaff Miller High Life, 6, \$22.38	H-002-060, Duquesne, 6, \$5.00	K-009-001, Blatz (Best Offer), 6, \$200.00
E-008-999, Chelmsford Ginger Ale, 6, \$10.52	F-009-001, Cleveland & San- dusky, 6, \$14.99	H-002-072, Sprenger, 8, \$8.50	K-012-001, Lone Star (Gun Bro- ken), 4, \$78.00
E-009-043, Ruhstallers, 6, \$21.00	F-012-003, Diamond Spring, 6, \$61.00	H-002-126, Engesser (w/ B-19-78 Engesser), 6, \$76.67	K-012-001, Lone Star (Missing Gun), 4, \$49.68
E-009-999, King Cola The Royal Drink, 6, \$8.50	F-015-999, 7Up Springfield MO, 6, \$18.50	H-002-999, Nu Grape, 6, \$7.01	L-001-001, Blatz, 6, \$10.99
E-009-999, Ocola Western Ohio Bottling, 6, \$9.95	F-015-999, Coca-Cola Bottling Works Greenwood MS, 6, \$56.22	H-002-CAN, Dawes Black Horse Ale & Porter, 4, \$13.51	L-001-004, Miller, 6, \$15.50
E-010-999, Dad's Root Beer, 6, \$9.69	F-027-003, Old Heidelberg, 6, \$9.99	H-003-008, Fitzgerald, 6, \$12.80	L-001-005, Pabst, 6, \$16.25
E-014-056, Dallas-Fort Worth, 8, \$7.51	F-027-999, Coca-Cola, 6, \$111.89	H-003-026, Tally-Ho, 6, \$3.13	L-001-006, Rupert, 6, \$12.50
E-014-058, Delmarva, 6, \$7.95	F-032-999, Boyce & Roberson Ice, Coal Saranac Lake NY, 6, \$14.26	H-004-002, Prima, 6, \$12.50	L-001-007, Schlitz, 6, \$17.75
E-014-157, Hyde Park (w/ B-21-34 Hyde Park), 6, \$20.50	F-999-999, (Whisk) Malted Grape Nuts, 6, \$22.50	H-004-999, Cracker Jack Angelus Marshmallows, 8, \$27.00	L-001-999, Libby's Pineapple Juice, 6, \$14.91
E-014-158, Jones, 8, \$15.00	FBOC-023, Cactus Cowboy, 6, \$58.99	H-005-999, Pepsi=Cola, 6, \$3.04	L-001-999, Libby's Pineapple Juice, 6, \$19.99
E-014-233, Red Top , 6, \$12.53	FBOC-032, Happy Hooligan, 4, \$227.55	H-007-009, Potosi, 8, \$8.96	L-002-001, Anheuser-Busch Var A, 6, \$24.50
E-014-350, Drewrys, 6, \$10.50	FBOC-037, Freddie Frosh, 8, \$152.50	H-008-002, Buckeye (2 Exam- ples), 6, \$26.85	L-002-001, Anheuser-Busch Var A, 6, \$35.00
E-014-368, Glasgo, 6, \$7.99	FBOC-109, Parrot, 8, \$58.00	H-008-003, Duquesne, 6, \$8.02	L-002-001, Anheuser-Busch Var A, 6, \$36.00
E-014-391, Kiewel (w/ B-18-335 Kiewel), 6, \$20.51	FBOC-135, Alligator, 6, \$20.49	H-008-005, Esslinger, 6, \$5.99	L-002-001, Anheuser-Busch Var A, 8, \$36.01
E-014-427, Progress, 6, \$21.06	FBOC-136, Alligator, 8, \$110.49	H-008-006, Fitzgerald, 6, \$20.39	L-002-001, Anheuser-Busch Var A, 6, \$40.00
E-014-440, Schotts, 6, \$1.99	FBOC-140, Seahorse, 8, \$52.01	H-008-008, Schlitz, 6, \$8.00	L-002-001, Anheuser-Busch Var A, 4, \$10.00
E-014-457, Wayne (w/ C-12-116 Wayne), 6, \$9.01	FBOC-410, Florida Pipe & Foun- dry (Box), 10, \$79.00	H-008-010, Narragansett, 6, \$20.50	L-002-001, Anheuser-Busch Var A, 6, \$21.50
E-014-485, Crockery City, 4, \$17.78		H-008-999, Pepsi=Cola, 8, \$11.01	L-002-001, Anheuser-Busch Var A, 6, \$23.73
E-014-544, St Claire, 6, \$20.00		H-008-999, Pepsi=Cola, 8, \$20.55	L-002-001, Anheuser-Busch Var A, 6, \$26.34
		H-008-999, Pepsi=Cola, 6, \$16.27	L-002-001, Anheuser-Busch Var A, 6, \$31.99
		H-008-999, Pepsi=Cola, 6, \$19.27	L-002-001, Anheuser-Busch Var A, 8, \$55.32
		H-010-CAN, American Brewing Rice Beer, 6, \$22.11	L-002-001, Anheuser-Busch Var

“Opener and eBay Trivia” (“BIN” Buy-It-Now & “DNMR” Did Not Meet Reserve)

A, 6, \$17.16	Shaped) Swan Lager, 6, \$30.51	M-019-022, Schlitz, 6, \$12.50	N-004-001, Haberle, 8, \$54.00
L-002-001, Anheuser-Busch Var A, 6, \$26.53	L-999-999, (Similar L-1 But Bottle Shaped) Toby Ale, 6, \$15.63	M-019-022, Schlitz, 6, \$26.88	N-004-002, Star, 6, \$30.44
L-002-001, Anheuser-Busch Var A, 6, \$27.00	M-001-005, Harvard Var B, 6, \$30.00	M-019-031, Burger, 6, \$22.27	N-004-003, Haberle, 8, \$43.50
L-002-001, Anheuser-Busch Var B, 6, \$28.99	M-001-006, Hudepohl, 6, \$25.00	M-019-999, 7Up, 6, \$10.49	N-004-999, 1933 Chicago WFs, 8, \$26.00
L-002-002, A-B Malt Nutrine, 6, \$43.68	M-001-021, Kings Bohemian, 8, \$52.01	M-019-999, Anaconda (Box), 10, \$27.00	N-004-999, 1934 Chicago WFs (Green), 6, \$25.00
L-002-002, A-B Malt Nutrine, 6, \$19.95	M-002-003, Goebel, 8, \$76.56	M-019-999, Moxie (Fantasy), 8, \$51.00	N-004-999, NuGrape, 8, \$21.72
L-002-002, A-B Malt Nutrine, 6, \$20.50	M-002-003, Haffenreffer, 6, \$15.49	M-019-999, Moxie (Fantasy), 8, \$60.99	N-004-999, NuGrape, 6, \$14.99
L-002-002, A-B Malt Nutrine, 6, \$39.00	M-002-004, Harvard, 6, \$15.49	M-019-999, Pepsi=Cola, 6, \$17.28	N-004-999, NuGrape (Blade Worn), 4, \$47.77
L-002-012, Windisch-Muhlhauser, 6, \$54.00	M-002-005, Harvard Var A, 6, \$25.27	M-019-999, Pepsi=Cola, 6, \$24.99	N-004-999, Pat O'Reilly Houston, 6, \$22.50
L-002-999, A Bronston Wines & Cigars Seattle WA, 6, \$49.00	M-002-011, Wielands, 6, \$90.56	M-019-999, Pepsi=Cola, 6, \$15.50	N-004-999, Pop Kola, 6, \$19.99
L-002-999, Dewars Whiskey, 4, \$36.70	M-002-015, Duluth (BIN), 6, \$25.00	M-019-999, Pepsi=Cola, 6, \$20.00	N-005-001, Utica Club (No Blades), 2, \$80.99
L-002-999, Hochstadters Co New York, 6, \$84.00	M-002-018, Muehlebach, 6, \$89.99	M-019-999, Pepsi=Cola, 8, \$21.50	N-009-002, Stoneys, 6, \$2.50
L-002-999, Kentucky Dew Whiskey, 6, \$93.86	M-002-018, Muehlebach, 6, \$66.00	M-019-999, Schroeder Hotel, 8, \$16.50	N-009-009, Vienna, 6, \$12.51
L-002-999, Old Empire Rye Montreal, 6, \$63.00	M-003-001, Beverwyck, 6, \$17.50	M-019-999, Tiffany & Co, 8, \$21.50	N-009-999, 7Up, 6, \$7.69
L-002-999, Parchment Whisky, 6, \$67.00	M-003-005, Edelweiss (Blue), 6, \$26.56	M-019-999, Tiffany & Co, 8, \$40.14	N-012-001, Becks, 6, \$13.49
L-002-999, Peebles Old Cabinet Whiskey, 6, \$36.00	M-003-005, Edelweiss (Yellow), 6, \$19.76	M-019-999, Whistle (Fantasy), 8, \$34.00	N-012-001, Becks, 6, \$30.99
L-003-004, Michelob, 6, \$5.51	M-003-007, Gunther, 4, \$10.50	M-021-001, Rainier, 6, \$30.00	N-018-8UL, Hamms Beverage Service Co, 8, \$22.50
L-004-006, Canandaigua (w/ L-4-76 Canandaigua), 6, \$26.99	M-003-009, Brackenridge, 4, \$37.89	M-023-999, Coca-Cola (Black), 6, \$7.39	N-020-999, Hupmobile Lincoln Highway Automobile Supplies, 6, \$27.75
L-004-010, Flecks, 6, \$36.50	M-003-010, Chartiers Valley, 6, \$85.41	M-025-001, Lemp, 6, \$51.00	N-024-001, Stag, 6, \$36.50
L-004-013, Iron City, 6, \$21.00	M-003-011, Cumberland, 4, \$18.59	M-025-001, Lemp, 6, \$64.00	N-024-999, Coca-Cola, 8, \$69.89
L-004-013, Iron City, 6, \$15.51	M-003-017, Schorr-Kolkschneider, 6, \$26.98	M-029-001, Budweiser, 6, \$5.50	N-029-007, Fredericks (Missing Pencil), 4, \$62.02
L-004-014, Koppitz, 8, \$29.99	M-003-017, Schorr-Kolkschneider, 8, \$51.00	M-029-040, Pabst Blatz Miller, 8, \$8.01	N-029-999, Dr Pepper (Missing Pencil), 4, \$27.75
L-004-014, Koppitz, 8, \$37.86	M-003-019, Zetts, 8, \$68.00	M-030-155, Hamms, 6, \$34.00	N-035-999, Swift & Company, 8, \$5.55
L-004-022, Iron City, 6, \$9.50	M-003-020, Liberty, 8, \$61.50	M-030-999, Coca-Cola Thomasville Bottling Co, 6, \$22.39	N-040-001, Miller, 8, \$20.50
L-004-034, Ballantine, 6, \$19.99	M-003-024, Gunther, 6, \$66.01	M-033-002, Jax, 6, \$9.95	N-040-002, Budweiser, 6, \$10.50
L-004-066, Koppitz, 8, \$43.00	M-003-024, Gunther, 6, \$42.41	M-036-002, Schreiber, 8, \$26.00	N-040-004, Coors, 6, \$9.00
L-004-066, Koppitz, 6, \$20.55	M-003-029, Victor, 6, \$37.99	M-037-001, Schlitz, 6, \$16.54	N-040-004, Coors (Bronze), 6, \$9.99
L-004-071, Champagne Velvet, 6, \$22.38	M-003-029, Victor, 6, \$23.04	M-042-001, Carling, 6, \$5.77	N-040-004, Coors (Painted), 8, \$7.00
L-004-076, Canandaigua (w/ L-4-6 Canandaigua), 6, \$26.99	M-003-033, Moose, 6, \$66.51	M-047-999, Crown Cork & Seal Co, 6, \$9.99	N-040-005, Olympia, 8, \$19.99
L-999-999, (Similar L-1 But Bottle Shaped) Black Label Beer, 8, \$26.00	M-003-035, Duquesne, 6, \$62.00	M-051-010, Budweiser, 6, \$10.12	N-040-005, Olympia, 8, \$10.49
L-999-999, (Similar L-1 But Bottle Shaped) Guinness Beer, 6, \$45.50	M-003-999, 1933 Chicago WFs, 6, \$19.00	M-051-999, Pepsi-Cola Petersburg WV, 6, \$18.79	N-040-007, Lone Star, 8, \$10.45
L-999-999, (Similar L-1 But Bottle Shaped) Morgan Rum, 6, \$14.26	M-003-999, 1933 Chicago WFs, 6, \$10.50	M-073-002, Missoula, 10, \$212.00	N-040-007, Lone Star, 8, \$19.01
L-999-999, (Similar L-1 But Bottle Shaped) Seagrams VO, 6, \$10.49	M-003-999, 1933 Chicago WFs, 4, \$15.50	M-073-006, Kessler, 6, \$203.01	N-040-007, Lone Star, 8, \$19.11
L-999-999, (Similar L-1 But Bottle Shaped) Seagrams VO, 8, \$19.99	M-003-999, 1933 Chicago WFs, 6, \$14.91	M-073-008, Kessler (BIN), 8, \$74.99	N-040-007, Lone Star, 8, \$19.60
L-999-999, (Similar L-1 But Bottle Shaped) Skol Lager, 6, \$21.05	M-003-999, DeWitt Hotels (Yellow), 6, \$8.08	M-073-013, Heurich (BIN), 6, \$28.50	N-040-007, Lone Star, 8, \$24.95
L-999-999, (Similar L-1 But Bottle Shaped) Stag Beer (Fantasy), 8, \$56.00	M-003-999, Dr Pepper, 6, \$69.00	M-073-999, 1934 Chicago WFs, 8, \$81.01	N-040-007, Lone Star, 8, \$24.95
L-999-999, (Similar L-1 But Bottle Shaped) Toby Ale, 6, \$15.63	M-003-999, Dr Pepper (Opener Hook Broken Off), 2, \$31.88	M-073-999, 1934 Chicago WFs, 6, \$99.50	N-040-007, Lone Star, 8, \$19.95
M-001-005, Harvard Var B, 6, \$30.00	M-003-999, Hunter Island Inn, 6, \$34.00	M-073-999, Gordon's Gin (Green), 6, \$169.49	N-040-007, Lone Star, 8, \$19.95
M-001-006, Hudepohl, 6, \$25.00	M-003-999, London Dry Ginger Ale, 6, \$28.77	M-073-999, Texaco Butte MT, 6, \$66.00	N-040-007, Lone Star, 8, \$24.95
M-001-021, Kings Bohemian, 8, \$52.01	M-003-999, Moxie, 6, \$51.00	M-074-002, Panda, 6, \$24.48	N-040-007, Lone Star (w/ Non-Opener Lone Star Buckle), 8, \$29.95
M-002-003, Goebel, 8, \$76.56	M-003-999, Moxie, 8, \$10.85	M-176-001, Stone, 10, \$35.25	N-040-007, Lone Star (w/ Non-Opener Lone Star Buckle), 8, \$29.95
M-002-003, Haffenreffer, 6, \$15.49	M-015-001, Miller Var A, 8, \$23.51	M-176-001, Stone (Box), 10, \$34.75	N-040-007, Lone Star (w/ Non-Opener Lone Star Buckle), 8, \$29.95
M-002-004, Harvard, 6, \$15.49	M-018-001, Budweiser, 6, \$8.51	N-002-001, Dixie, 8, \$23.00	N-040-007, Lone Star (w/ Non-Opener Lone Star Buckle), 8, \$29.95
M-002-005, Harvard Var A, 6, \$25.27	M-019-003, Narragansett, 6, \$27.01	N-002-001, Dixie, 6, \$9.99	N-040-007, Lone Star, 8, \$22.49
M-002-011, Wielands, 6, \$90.56	M-019-022, Schlitz, 6, \$17.59	N-002-001, Dixie, 8, \$12.49	N-040-007, Lone Star, 8, \$26.00
M-002-015, Duluth (BIN), 6, \$25.00		N-002-001, Dixie, 6, \$21.01	N-040-007, Lone Star (w/ Non-Opener Lone Star Buckle), 8, \$29.95
M-002-018, Muehlebach, 6, \$89.99		N-002-001, Dixie (Red) (EX), 8, \$35.00	
M-002-018, Muehlebach, 6, \$66.00			

“Opener and eBay Trivia” (“BIN” Buy-It-Now & “DNMR” Did Not Meet Reserve)

8, \$24.95	O-005-010, Southern Select (Box), 10, \$34.00	O-502-999, The Liquid, 4, \$24.39	P-014-8UL, Blatz Landau Distributing Co, 6, \$20.51
N-040-007, Lone Star (w/ Non-Opener Lone Star Buckle), 8, \$24.95	O-005-011, Acme, 6, \$62.78	O-502-999, The Liquid, 6, \$86.00	P-014-999, Nehi Bottling Works Van Wert OH, 8, \$29.99
N-040-017, Lone Star (BIN), 8, \$65.00	O-005-011, Acme, 6, \$104.84	O-502-999, The Liquid, 6, \$40.00	P-015-001, Blatz, 6, \$25.11
N-056-8UL, Buckeye, 10, \$45.00	O-005-015, Stegmaier, 6, \$15.50	O-502-999, The Liquid (w/ Box), 10, \$263.79	P-019-123, Allemen (Yuengling Agent), 6, \$18.50
N-067-999, Kapoff Pencil, 6, \$19.99	O-005-016, Sterling Silver Kirk Repousse, 8, \$70.00	O-505-999, Coca-Cola, 6, \$8.00	P-019-130, Sachs Malt Var B, 8, \$11.05
N-085-001, Utica Club, 8, \$49.00	O-005-017, Burgermeister, 6, \$8.49	O-505-999, Coca-Cola, 6, \$9.99	P-019-8UL, Gunther, Pabst & White Rock Waters Hot Springs ARK, 6, \$38.77
N-085-001, Utica Club, 8, \$39.00	O-005-019, Falstaff, 6, \$8.50	O-505-999, Coca-Cola, 6, \$20.50	P-019-8UL, The Budweiser Bar Next Katy Depot Waco TX, 6, \$27.00
N-103-8UL, Hemrich Bros Brewing Co, 6, \$145.55	O-005-019, Falstaff, 8, \$9.99	O-505-999, Coca-Cola, 6, \$36.30	P-019-999, Elk Horn Saloon Marlin TX, 6, \$32.39
N-175-999, H Voight Fall Creek WI, 6, \$24.27	O-005-019, Falstaff, 8, \$11.51	O-505-999, Coca-Cola, 6, \$20.50	P-019-999, J C Somer & Co Poplar Log Corn Whiskey Salisbury NC, 8, \$155.46
N-501-999, (Knife Take Off), 6, \$12.64	O-005-019, Falstaff (Box), 10, \$9.99	O-505-999, Coca-Cola, 6, \$22.50	P-019-999, Saxe Vancouver WA, 6, \$42.01
N-505-999, Coca-Cola Nashville 1952, 6, \$20.50	O-005-023, Regal Pale, 6, \$159.95	O-505-999, Coca-Cola, 6, \$14.27	P-019-999, The Capitol Hacke & Holbrook, Props. Fine Wines, Whiskies, Cigars Roanoke VA, 8, \$89.00
N-506-999, Coca-Cola 50th, 6, \$30.50	O-005-028, Miller High Life, 8, \$207.50	O-505-999, Icy-O, 4, \$285.03	P-022-003, Moerlein, 8, \$26.00
N-510-999, Coca-Cola, 4, \$39.00	O-005-999, #5 Grand Prize & #9 Falstaff, 6, \$5.50	O-505-999, Orange Crush, 6, \$91.00	P-023-001, Gutsch, 6, \$86.00
N-999-999, (Small 2 1/2" Knife Sharpener/Opener) Keen Kutter, 6, \$66.50	O-005-999, (1) Coca-Cola & (2) Pepsi-Cola, 6, \$0.99	O-505-999, Whistle, 6, \$189.95	P-025-002, Anheuser-Busch, 8, \$350.00
O-001-999, Wagner 7Up Bottling Co, 8, \$112.49	O-005-999, Canada Dry (Box), 10, \$10.50	O-505-999, Whistle (BIN), 6, \$175.00	P-025-003, Adolphus Busch, 6, \$179.99
O-002-012, Highlander, 8, \$13.10	O-005-999, Climax Beverages (Box), 10, \$168.50	O-506-999, Pepsi=Cola, 6, \$153.00	P-025-003, Anheuser-Busch, 6, \$124.01
O-002-023, Standard, 8, \$49.99	O-005-999, Climax Beverages (Box), 10, \$53.78	O-506-999, Pepsi=Cola (Tear Drop), 6, \$27.78	P-025-003, Anheuser-Busch 1952 Version, 8, \$320.00
O-002-8UL, Genesee Beer & Ale (Pic of Man), 8, \$40.00	O-005-999, Double Cola, 6, \$54.34	O-507-999, Pepsi=Cola, 6, \$159.50	P-025-003, Anheuser-Busch 1952 Version, 8, \$332.97
O-002-999, 7Up Cokato MN, 6, \$9.99	O-005-999, Dr Pepper, 6, \$18.50	O-508-999, Pepsi-Cola, 6, \$33.56	P-025-009, Anheuser-Busch, 4, \$125.00
O-002-999, B-1 Lemon Soda, 8, \$34.00	O-005-999, Falstaff, 6, \$40.00	O-511-999, Coca-Cola (Hoof), 6, \$135.00	P-025-999, Glasner & Barzen Kansas City, 6, \$231.49
O-002-999, Grapette, 8, \$68.88	O-005-999, Glascock Bottling Co, 6, \$260.55	O-512-999, Canfields, 6, \$25.05	P-025-CAN, Berlin Lion Brewery Limited, 6, \$180.50
O-002-999, Orange Crush, 8, \$50.95	O-005-999, Grapette, 8, \$91.00	O-516-999, Blank, 8, \$12.75	P-026-008, Anheuser-Busch (Red & Blue), 4, \$170.50
O-002-999, Red Rock Cola, 8, \$45.00	O-005-999, Kelvinator, 6, \$187.50	O-516-999, Blank (Box), 10, \$104.50	P-026-008, Anheuser-Busch (Steel), 6, \$355.00
O-002-999, Smile Soda, 8, \$14.00	O-005-999, Mr Cola (Box), 10, \$22.01	O-516-999, Coca-Cola (Corkscrew Broken Off), 2, \$41.00	P-026-8UL, Bergner & Engel / Tannhauser (Same as P-25-1), 8, \$51.00
O-004-009, Stag (Box), 10, \$20.50	O-005-999, Nehi, 6, \$150.00	O-523-999, Coca-Cola, 8, \$31.04	P-026-8UL, Budweiser 125th Anniversary (Box), 10, \$114.50
O-004-009, Stag (Box), 10, \$27.00	O-005-999, Orange Crush, 6, \$28.00	O-524-999, Ma's Old Fashion Root Beer, 6, \$9.99	P-026-999, Wolfrum & Reiff Philadelphia / Rhine Wine (One Knife Blade), 6, \$136.49
O-004-014, Schaefer (Box), 10, \$9.99	O-005-999, Pep, 8, \$152.50	O-999-999, (O-16 On Wooden Cap Catcher) Coca-Cola Soda Jerk, 6, \$19.99	P-031-8UL, Busch Beer Mack Coon Albia IA, 6, \$153.05
O-004-014, Schaefer (Box), 10, \$4.70	O-005-999, Rock Spring, 6, \$17.55	P-001-017, Anheuser-Busch (Cloughs Patent), 6, \$79.99	P-036-008, Peerless, 6, \$24.10
O-004-024, Schaefer (Box), 10, \$14.50	O-005-999, Royal Crown Cola, 6, \$15.52	P-002-004, Gerke, 6, \$76.51	P-038-001, Anheuser-Busch (1 Stanhope Missing), 4, \$260.55
O-004-025, F & S, 8, \$53.00	O-005-999, The Liquid, 8, \$78.00	P-003-999, Henry Boker Co, 6, \$35.00	P-041-001, Olympia, 4, \$47.99
O-004-025, F & S, 6, \$13.05	O-005-999, The Liquid, 6, \$37.00	P-004-999, J Ciribari & Sons New York, 6, \$85.00	P-042-001, Bartholomay, 6, \$33.10
O-004-8UL, York Brewing Co York PA, 8, \$60.99	O-005-999, White Rock, 8, \$9.99	P-004-999, Santa Cruz Liquor Store, 6, \$71.00	P-045-001, Ballantine, 4, \$133.50
O-004-999, Dr Pepper York NE (Box), 8, \$53.52	O-005-999, White Rock (Box), 10, \$14.99	P-007-052, Walla Walla (Missing Corkscrew), 4, \$21.51	P-051-012, Fehr's Malt Tonic (Add Malt), 6, \$40.01
O-005-003, Dixie, 8, \$13.50	O-005-999, White Rock Ginger Ale, 6, \$5.00	P-008-098, Maier-Zobelein, 4, \$20.50	
O-005-005, Grand Prize, 8, \$15.00	O-005-999, White Rock Ginger Ale (Box), 10, \$9.99	P-008-105, Acme, 6, \$27.00	
O-005-006, Jackson, 8, \$27.34	O-005-MEX, Tome Lucky Club, 8, \$39.00	P-008-128, Dubuque, 8, \$87.80	
O-005-007, Lucky Lager, 8, \$31.00	O-006-002, Burgermeister, 6, \$24.99	P-008-129, Gund, 8, \$26.00	
O-005-009, Falstaff, 8, \$20.50	O-006-999, Arrow Beer, 6, \$26.02	P-008-149, Kessler, 10, \$60.00	
O-005-009, Falstaff, 6, \$27.50	O-006-999, B-1 Soda, 8, \$36.00	P-008-157, Chicago Malt, 4, \$21.02	
O-005-009, Falstaff, 6, \$30.10	O-006-999, Coca-Cola, 8, \$87.43	P-008-999, Essinger & Judal East Las Vegas NM, 8, \$65.00	
O-005-009, Falstaff, 6, \$42.00	O-006-999, Frostie Root Beer, 6, \$88.00	P-009-025, Bay City, 4, \$35.64	
O-005-009, Stegmaier, 6, \$21.61	O-006-999, Royal Crown Cola, 8, \$112.50	P-011-999, Sewell Clothes Bremen GA, 6, \$30.20	
O-005-010, Southern Select, 6, \$49.99	O-008-999, Peter Schille, 6, \$47.74	P-013-001, Schlitz, 6, \$72.00	
O-005-010, Southern Select, 8, \$13.50		P-013-001, Schlitz, 6, \$88.50	

“Opener and eBay Trivia” (“BIN” Buy-It-Now & “DNMR” Did Not Meet Reserve)

- P-051-028, Fallert, 6, \$24.99
- P-051-032, Muessel, 6, \$49.99
- P-054-999, You Can Smell The Corn As The Darkies Hoe It. Way Down Yonder In The Corn Field. Summerville XX Corn Liquor S. G. Atkins Co. Richmond, Va., 6, \$46.76
- P-056-001, St Joseph, 4, \$90.52
- P-069-999, Mason Co / Chicago, 6, \$32.00
- P-090-001, Northern , 8, \$51.98
- P-109-999, Union Wine, 6, \$33.00
- P-128-001, Hemrich (Corkscrew Broken Off), 2, \$28.00
- P-506-999, Coca-Cola Carioca Rum, 8, \$47.99
- P-514-999, Coca-Cola, 6, \$180.48
- P-514-999, Coca-Cola (Original ???), 6, \$212.50
- Q-???-001, Schlitz, 6, \$13.63
- R-002-001, Iroquois, 6, \$9.99
- R-002-001, Iroquois, 6, \$10.55
- R-002-001, Iroquois, 6, \$14.50
- R-002-005, Iroquois (Chrome), 8, \$37.99
- R-003-001, Iroquois, 6, \$15.99
- R-003-001, Iroquois, 6, \$9.99
- R-003-001, Iroquois, 6, \$11.51
- R-008-001, Kaiers, 8, \$510.00
- R-014-999, Wichita Falls TX Bottling Co, 6, \$7.05
- R-020-001, Hard Rock, 10, \$3.51
- R-074-001, Adams, 10, \$5.50
- R-074-001, Adams, 10, \$6.50
- R-074-001, Adams, 10, \$5.50
- R-074-001, Adams, 10, \$6.00
- R-076-001, Adams, 10, \$11.00
- Z-Can-Opener, Sterling Silver Kirk Repousse, 8, \$45.00
- Z-Corkscrew, Austrian ANRI Circus Clown & Seal, 8, \$549.99
- Z-Corkscrew, Danish 1930s George Jensen Pyramid Corkscrew, 8, \$898.90
- Z-Corkscrew, Dutch 19thC Sterling Handle w/ Sheath, 6, \$1,500.00
- Z-Corkscrew, English 1847 Dray Button Patent, 6, \$1,183.80
- Z-Corkscrew, English 19thC 11-Tool Folding Bow, 6, \$802.77
- Z-Corkscrew, English 19thC Dowler Kings Patent, 6, \$801.67
- Z-Corkscrew, English 19thC Dowler Kings Patent, 6, \$684.80
- Z-Corkscrew, English 19thC Folding Hand Made Bow, 6, \$1,375.00
- Z-Corkscrew, English 19thC Heeley & Sons Thomason Type Half Size, 6, \$472.75
- Z-Corkscrew, English 19thC Heeley The Empire Double Lever, 6, \$1,075.01
- Z-Corkscrew, English 19thC Hulls Presto, 8, \$3,600.00
- Z-Corkscrew, English 19thC Merritt Brass Barmount (Chambers Patent 23592), 8, \$685.75
- Z-Corkscrew, English 19thC Royal Club (DNMR), 4, \$2,287.00
- Z-Corkscrew, English 19thC Samuel Pemberton Silver Sleath Pocket Corkscrew, 6, \$1,214.82
- Z-Corkscrew, English 19thC The Don Barmount, 6, \$556.43
- Z-Corkscrew, English 19thC Thomason Chinoiserie, 8, \$2,850.00
- Z-Corkscrew, English 19thC Thomason Kings Four Pillar, 6, \$785.50
- Z-Corkscrew, English 19thC Thomason Kings Four Pillar, 6, \$870.38
- Z-Corkscrew, French 1878/1879 Depose Pump Lever Patent, 8, \$700.00
- Z-Corkscrew, French 19thC Lever Modele Depose, 8, \$3,383.00
- Z-Corkscrew, German 19thC 6-Tool Folding Bow, 6, \$219.46
- Z-Corkscrew, German 19thC Baker Patent Version, 6, \$700.00
- Z-Corkscrew, German 19thC Celluloid Alligator Waiters Friend, 4, \$305.01
- Z-Corkscrew, German 19thC Celluloid Folding Ladies
- Legs B&L Saloon Los Angeles (w/ Pouch), 6, \$610.00
- Z-Corkscrew, German 19thC Celluloid Folding Legs, 6, \$415.00
- Z-Corkscrew, German 19thC Celluloid Ladies Legs Blue Striped, 6, \$400.00
- Z-Corkscrew, German 19thC Celluloid Ladies Legs Flesh Colored, 6, \$762.00
- Z-Corkscrew, German 19thC Celluloid Mermaid Waiter's Friend, 6, \$765.00
- Z-Corkscrew, German 19thC Celluloid Striped Folding Legs, 6, \$450.00
- Z-Corkscrew, German 19thC Miniature Celluloid Striped Folding Legs, 6, \$921.99
- Z-Corkscrew, German 19thC Celluloid Lady w/ Knife, 6, \$898.88
- Z-Corkscrew, German 19thC Small Celluloid Folding Ladies Legs (BIN), 8, \$450.00
- Z-Corkscrew, German 20thC Diamant Version, 6, \$225.01
- Z-Corkscrew, Root Carved Double Faces Wood-T, 6, \$585.00
- Z-Corkscrew, US 1878 Tucker Lever Patent, 6, \$1,580.55
- Z-Corkscrew, US 1882 Wellman Patent Wellman New Orleans, 4, \$33.57
- Z-Corkscrew, US 1883 Strait Wood-T Patent, 6, \$760.00
- Z-Corkscrew, US 1884 Curley Wood-T Handle Patent, 4, \$350.00
- Z-Corkscrew, US 1884 Curley Wood-T Handle Patent, 6, \$300.00
- Z-Corkscrew, US 1890s Carved Horn Black Man In Alligator's Mouth, 8, \$835.00
- Z-Corkscrew, US 1892 Columbian Exposition Columbus Figural, 6, \$332.00
- Z-Corkscrew, US 1895 Daisy Arcade Barmount, 6, \$227.50
- Z-Corkscrew, US 1900 Hopson Folding Bow Patent, 6, \$947.00
- Z-Corkscrew, US 1900s Yankee #2 Barmount, 6, \$118.50
- Z-Corkscrew, US 1902 Thomas Multi-Tool Patent, 6, \$102.00
- Z-Corkscrew, US 1910 Chippendale Patent, 6, \$565.99
- Z-Corkscrew, US 1917 Brady U-Neek Patent, 6, \$715.00
- Z-Corkscrew, US 1932 Bridge-water Coffin Patent, 6, \$213.50
- Z-Corkscrew, US 20thC Boyer Pneumatic Tool Co, 6, \$193.34
- Z-Corkscrew, US 20thC Brown Bilt Shoes Ladies Leg Knife, 8, \$127.50
- Z-Corkscrew, US 20thC Crosby Pup, 8, \$1,075.00
- Z-Corkscrew, US 20thC Crosby Pup, 6, \$1,136.11
- Z-Corkscrew, US 20thC Old Crow Figural (End of Worm Missing), 6, \$418.13
- Z-Corkscrew, US 20thC Sterling Golf Bag, 8, \$123.59
- Z-Corkscrew, US 20thC Syroco Indian, 6, \$725.00
- Z-Corkscrew, US 20thC Syroco Indian, 8, \$1,400.00
- Z-Corkscrew, US 20thC Syroco Monk, 6, \$318.13
- Z-Corkscrew, US 20thC Syroco Old Codger, 6, \$46.00
- Z-Corkscrew, US 20thC The Modern Barmount, 8, \$366.61
- Z-Corkscrew, US 20thC Utica Club Boot Knife Western Supplies Cutting & Perforating Dies, 8, \$299.00
- Z-Corkscrew, US 20thC Yellow Ross Pig, 8, \$87.00
- Z-Corkscrew, US Four-In-Pal (Knife/Cigar Cutter), 8, \$13.50
- Z-Corkscrew, Waiter's Friend Torley & Cie, 6, \$145.46
- Z-Hagenauer, Scottie Dog Bottle Opener, 8, \$38.77
- Z-Narragansett, P-16, M-19, B-24 Plus 5 "I"s, 6, \$224.72
- Z-Opener, US Chase Patent Squeeze Opener, 8, \$21.50

American or Foreign???

Jack Ford has owned the opener to the right for several years and mentioned it to John Cartwright. John thought it could be from Bellingham Bay Brewery of Whatcom, Wa. which produced a 3-B Beer. The local historian thought not (check out brewerygems.com) and to me the opener has a English or Australian look to it (the shape of the opener end). Does anyone else have an opinion???



"Opener and eBay Trivia" (ICCA Auction Results Nov/2010)

www.auction.icca-corkscrew.com	\$2,781.46	(USD) \$1,872.07
Howard Luterman Collection - RARE	Wier Double Constatina Corkscrew V	French Pump Lever Pocket Corkscrew
German DRGM 181644 \$12,445.67	good cond. Marked (GBP)	PERILLE: SUBITO (GBP)
Rare English "The Lifting Jack" (EUR)	£1,730.00 (USD) \$2,698.91	£1,200.00 (USD) \$1,872.07
€7,200.00 (USD) \$9,536.42	Frank Ellis Collection - Ratchet & Hook	Robert Jones 1 Registered Design (GBP)
Rare English Direct-Pull Double Handle	Corkscrew (GBP) £1,701.00 (USD)	£1,200.00 (USD) \$1,872.07
Corkscrew (EUR) €7,000.00 (USD)	\$2,653.67	Dutch 18th century silver pocket cork-
\$9,271.52	Howard Luterman Collection - RARE	screw nr. 2 (EUR) €1,400.00 (USD)
Howard Luterman Collection - RARE	Barrel - sliding lock \$2,610.00	\$1,854.30
German DRGM 28204 \$9,200.00	French Le Desire Corkscrew \$2,600.00	Autumninal Fruits Thomason Corkscrew
Frank Ellis Collection - Large Patent Sin-	FRED O'LEARY COLLECTION - Hen-	(GBP) £1,125.00 (USD) \$1,755.07
gle Lever (GBP) £5,000.00 (USD)	shall Soho Patent \$2,600.00	Frank Ellis Collection - Maud Patent
\$7,800.31	Early original Dutch silver corkscrew	(GBP) £1,105.00 (USD) \$1,723.87
FRED O'LEARY COLLECTION - Lund	BACCHUS (EUR) €1,900.00 (USD)	Woodman's 1886 American Patent Num-
Barrel w/ Bottle Grips \$7,700.00	\$2,516.56	ber 344.556 Corkscrew \$1,700.00
Smythe's 1936 HOOTCH OWL patent	Frank Ellis Collection - Large Horsemans	Sterling Champagne Knife & CORK-
Corkscrew \$5,400.00	Multitool Knife (GBP) £1,600.00	SCREW - 1908 Wüsthof DRGM
Holroydes Patent Corksplitter Corkscrew	(USD) \$2,496.10	\$1,700.00
(GBP) £3,200.00 (USD) \$4,992.20	Charles Hulls Royal Club \$2,445.00	Etui \$1,700.00
A L QVARNSTROEM PATENTED	Howard Luterman Collection - RARE	FRENCH DEPOSE FIGURAL KNIFE -
BARSCREW VERY RARE 1893	Nickel Plated Legs \$2,410.00	very hard to find \$1,600.00
\$4,100.00	FRED O'LEARY COLLECTION - Tho-	Rare Medicine dial corkscrew by Clough
FRED O'LEARY COLLECTION -	mason Variant - open top handle	\$1,600.00
Robert Jones I \$4,050.00	\$2,400.00	Rare unusual hand corker (GBP)
18th Century Dutch Silver Pocket Cork-	FRED O'LEARY COLLECTION - 1884	£1,010.00 (USD) \$1,575.66
screw \$4,000.00	Patent WIER II DOUBLE LEVER	ORIGINAL GROPELLI \$1,550.00
German self puller with bow spring	\$2,400.00	David W. Davis Improved Patent
(EUR) €3,000.00 (USD) \$3,973.51	MAUD'S 1895 ENGLISH PATENT	\$1,537.00
Wonderful Satyr and Nymphs Cork-	W.EYEBROW HANDLE \$2,400.00	FRED O'LEARY COLLECTION -
screw \$3,800.00	FRED O'LEARY COLLECTION - Very	Bewer's 1898 AMOR \$1,500.00
FRED O'LEARY COLLECTION Likely	Rare Silver Beau Brummel	Frank Ellis Collection - Nut Cracker with
French Figural Snakes & Fish	\$2,323.00	corkscrew - Reg. (GBP) £950.00
\$3,800.00	Frank Ellis Collection - Van Gieson	(USD) \$1,482.06
FRED O'LEARY COLLECTION - Hull's	(GBP) £1,425.00 (USD) \$2,223.09	Stunning Steel Two Pillar Corkscrew
PRESTO excellent condition	Rare DRGM MOP Hndl. Cigar Tool	(GBP) £950.00 (USD) \$1,482.06
\$3,500.00	Champagne Knife & Corkscrew	1800 TH CEN STEEL CS WITH
17th Century "Corkscrews" - Babbidge	\$2,200.00	FIRESTEEL AND PIPE TAMPER
Collection \$3,500.00	Howard Luterman Collection - RARE	\$1,475.00
EXCELLENT DUTCH SILVER HORSE	Brass Legs \$2,200.00	Frank Ellis Collection - Mestre Non-
POCKET CORKSCREW \$3,300.00	FRED O'LEARY COLLECTION - Tho-	Worm Extractor (GBP) £900.00
Hootch Owl Richard G. Smythe Patent	mason Harvest Barrel \$2,100.00	(USD) \$1,404.06
\$3,150.00	FRED O'LEARY COLLECTION - Twigg	The Smart Express German DRGM Cork-
ROBERT JONES' 1840 FIRST ENG-	& Bateman 1868 Patent \$2,100.00	screw (GBP) £900.00 (USD)
LISH REGISTERED DESIGN	Thomason's 1802 British Pat 2,617 -	\$1,404.06
\$3,100.00	Compound type corkscrew	All steel Twigg's patent Corkscrew 1867-
Very Interesting Folding Bow Corkscrew	\$2,000.00	1868 \$1,395.00
- I. B. \$3,000.00	Henshall Corkscrew w/grips marked IM-	C Paffrath Corkscrew (GBP) £867.00
HOCH OWL PATENT NO D-98968	PROVED PATENT \$2,000.00	(USD) \$1,352.57
AMERICAN 1935 \$3,000.00	Robert Jones 1840 Registered Design	4 Pillar Thomason type corkscrew (GBP)
FRED O'LEARY COLLECTION - Hull's	Corkscrew \$1,975.00	£850.00 (USD) \$1,326.05
ROYAL CLUB nickel plated	Van Gieson's 1867 U. S. Patent No.	Italian or French Double Lever Cork-
\$2,975.00	61,485 Corkscrew \$1,975.00	screw, marked PATENT (EUR)
Charles Hull's Presto Corkscrew	1878 Tucker U. S. Patent 207,631 Cork-	€1,000.00 (USD) \$1,324.50
\$2,800.00	screw \$1,875.00	early nineteenth century english steel
English Burgess and Fenton patented	HENSHALL 1795 SOHO PATENT	corkscrew (EUR) €1,000.00 (USD)
lever (EUR) €2,100.00 (USD)	CORKSCREW (GBP) £1,200.00	\$1,324.50

"Opener and eBay Trivia" (ICCA Auction Results Nov/2010)

Wier's Patent Peerless , \$1,300.00	VERTISING CORKSCREW , \$900.00	Frank Ellis Collection - Old English Twin Pillar - Kooystra , (GBP) £440.00 , (USD) \$686.43
The "Favorite" Bar Screw with single lever bottle clamp , \$1,270.00	FRED O'LEARY COLLECTION - Four Poster King's Screw , \$875.75	Howard Luterman Collection - German Bacchus Reform D.R.G.M. , \$675.00
Lund's 1838 Patent (No. 7761) Bottle Grips Corkscrew , \$1,255.00	J. RODGERS "T", Brass Button, unusual wire cutter , \$860.00	Goliath Corkscrew , (GBP) £430.00 , (USD) \$670.83
Hull's Royal Club Corkscrew , \$1,250.00	Barrel shaped 18th Century Roundlet Corkscrew , \$851.00	Frank Ellis Collection - Wilmot & Roberts, pressed horn handle , (GBP) £425.00 , (USD) \$663.03
Rare Italian Brass Hand Corker , (GBP) £800.00 , (USD) \$1,248.05	Howard Luterman Collection - German Combination Tool , \$850.00	DUFEU'S 1874 FRENCH PATENT CASED ROUNDLET , \$650.00
Griswold's U. S. Patent 1884 Corkscrew , \$1,225.00	silver pocket corkscrew , (EUR) €610.00 , (USD) \$807.95	18TH C. STEEL PICNIC WITH WOODEN HANDLE , \$650.00
Rare French Corkscrew - Delaporte , \$1,210.00	BEAUTIFUL VULCAN CORKSCREW , \$805.00	silver pocket corkscrew , (EUR) €485.00 , (USD) \$642.38
George Korn's 1883 US Pat 2 Prong Cork Puller - Rare Version , \$1,200.00	FOLDING GERMAN CORKSCREW WITH SILVER SCALES (Henckels) , \$800.00	Italian Corkscrew with Brass Frame and Wooden Handle , (EUR) €470.00 , (USD) \$622.52
German DRGM satyr legs, black celluloid , (GBP) £750.00 , (USD) \$1,170.05	Jules Brangs' 1878 French Patent Number 122,704 , \$800.00	THE PIX - very hard to find , \$610.00
Twigg 1867 British Patent: Steel handle Corkscrew , (GBP) £750.00 , (USD) \$1,170.05	Goodall's 1885 British Patent Number 6793 Corkscrew , \$800.00	Leduc Freres Corkscrew with spring below cage , (GBP) £385.00 , (USD) \$600.62
GERMAN PERPETUAL CORKSCREW WITH DECORATED BARREL , \$1,125.00	American 1917 Brady Patent U-Neek Cork Puller , \$800.00	Howard Luterman Collection - German Bonsa Corkscrew D.R.G.M. , \$600.00
1890 Heeley's EMPIRE Corkscrew , \$1,125.00	Francis John Russell patent , (GBP) £501.00 , (USD) \$781.59	Howard Luterman Collection - German Geha Double Lever , \$600.00
C1890 PLAYING CARD SUITS CORKSCREW BY PECQUET , \$1,110.00	Rare Wier V Concertina Corkscrew - Look very carefully , (GBP) £500.00 , (USD) \$780.03	Excellent two pillar English corkscrew , \$595.00
Cope & Cutler Thomason , (GBP) £700.00 , (USD) \$1,092.04	Frank Ellis Collection - Walton's Registered Tap , (GBP) £500.00 , (USD) \$780.03	Very early English steel frame corkscrew , \$595.00
Carl Bewer Patent AMOR folding corkscrew Soldier and Lady , (GBP) £680.00 , (USD) \$1,060.84	Holborn Lever , \$775.00	Frank Ellis Collection - Vulcan Thomason , (GBP) £375.00 , (USD) \$585.02
Frank Ellis Collection - Folding Bow with 2 Worms , (GBP) £675.00 , (USD) \$1,053.04	American 1910 Patent Chippendale Corkscrew & Cigar Cutter , \$750.00	Frank Ellis Collection - Viarango T corkscrew with blade , (GBP) £375.00 , (USD) \$585.02
DELAVIGNE LEVER , \$1,000.00	SINGLE LEVER FRENCH CORKSCREW , \$750.00	FRED O'LEARY COLLECTION - Silver Pocket - Single Finger , \$575.00
Howard Luterman Collection - Hugo Boehme DRGM 58073 , \$1,000.00	Cast Iron Handle Curley's 1884 patent number 297,232 , \$750.00	DRGM Champagne Nippers with Foil Cutter and Corkscrew , (EUR) €430.00 , (USD) \$569.54
Willett's regd design with cap opener Marked RARE!! , (GBP) £630.00 , (USD) \$982.84	FRED O'LEARY COLLECTION - THE HOLBORN LEVER , \$750.00	Tire-bouchon à siple rotation allemand , (EUR) €425.00 , (USD) \$562.91
Frank Ellis Collection - Cellar Tool , (GBP) £625.00 , (USD) \$975.04	Rare German Hook Corkscrew / Cork Puller , (EUR) €565.00 , (USD) \$748.34	Frank Ellis Collection - Rousseau Patent Single Lever , (GBP) £360.00 , (USD) \$561.62
C1900 MERMAID WAITERS' FRIEND W. RED SCALES , \$950.00	1910 Harry Chippendale U. S. Patent Corkscrew , \$745.00	Strait's American Corkscrew Patent 279,203 of June 12, 1883 , \$550.00
Rare Italian DIAMANT , \$950.00	Howard Luterman Collection - German DRGM 28,783 , \$737.00	BARSCREW-DANISH STAHLK-NECHT 1887, PATENT 926 ! , \$550.00
Frank Ellis Collection - Jones Champagne Tap , (GBP) £600.00 , (USD) \$936.04	Frank Ellis Collection - Chatelaine with miniature bow , (GBP) £465.00 , (USD) \$725.43	Rare Extensible marked KIDBOUCHE , (EUR) €415.00 , (USD) \$549.67
Thomas Straight's 1883 U.S. Patent Adjustable Bell CORKSCREW , \$925.00	THE PHOENIX 30 - unique mechanism , \$720.00	JAMES LAW ~ ENGLISH PATENTED CORKPULLER , \$525.00
FRED O'LEARY COLLECTION - Narrow Rack King's Screw , \$900.00	Frank Ellis Collection - Labreche's Toilet Necessity -Patent , (GBP) £455.00 , (USD) \$709.83	
DESCOURS 1905 FRENCH PT FOR "SOURCE PAROT" , \$900.00	Small Aluminum T with Bell , \$700.00	
RARE OVER-SIZED WALKER AD-		

“Opener and eBay Trivia” (ICCA Auction Results Nov/2010)

Gambles bladed regd design corkscrew - marked . (GBP) £335.00_(USD) \$522.62	\$468.02	Fork Knife Corkscrew . \$400.00
Curley's 1884 patent marked on band . \$520.00	German, nickle plated, 1899 registerd combination by Bader . (EUR) €350.00_(USD) \$463.58	COLUMBUS CHICAGO 1892 . \$400.00
ITALIAN CORKSCREW WITH NECK RING . \$520.00	Early, French, steel T- corkscrew 18th c. (EUR) €350.00_(USD) \$463.58	Scarce Butlers of Sheffield Auto Corkscrew - c. 1950 - Boxed . (GBP) £255.00_(USD) \$397.82
The Goliath . (GBP) £333.00_(USD) \$519.50	King's Screw maked J&W* . (EUR) €350.00_(USD) \$463.58	Dutch Silver Corkscrew - OPCW building The Hague . (EUR) €300.00_(USD) \$397.35
LEW'S PATENT - nickel plated . \$507.00	FRED O'LEARY COLLECTION - Wide Rack King's Screw . \$450.00	CHUDZIKOWSKI Patent FORA Reproduction . \$385.00
PREVIOUSLY UNKNOWN GERMAN SPRING - BALL BEARING . \$501.00	French Single Lever . \$450.00	Ernst Wahl's German 1932 reg design, marked D. R. G. M. . (EUR) €290.00_(USD) \$384.11
German Alligator Knife - very old . \$500.00	French Patent Corker . (GBP) £285.00_(USD) \$444.62	Late 18th / Early 19th Century Figural Barrel . \$380.00
Ornate Cigar Tool, Champagne Knife & CORKSCREW Silver Handle . \$500.00	Paul Gladman - Cheeky Sailor Corkscrew - Registered Design . (GBP) £275.00_(USD) \$429.02	Howard Luterman Collection: German Combination Tool D.R.G.M. . \$376.00
2 R. Murphy--Boston Open Frame Corkscrews---Both Mint! . \$500.00	"DUCK BILL" Corkscrew, Fully Marked, N/R . \$425.00	19th Cent. Samuel Pemberton Travel Corkscrew Silver . \$375.00
Frank Ellis Collection - Double Helix Penknife . (GBP) £320.00_(USD) \$499.22	Early French Single Folding Perfume/ Travelling Corkscrew . \$425.00	German Hercules Neues Partial neck ring corkscrew . \$375.00
King's Screw with badge marked DOWLER and PATENT . \$495.00	THE MODERN Bar Mount, Gilchrist, 1907 Patent, N/R . \$425.00	SWEDISH FIGURAL CORKSCREW IN BRASS, RARE CA 1920 . \$375.00
Rare Nutcracker Hammer Combination . \$485.00	3 books German patents, Reg designs and Pocket Corkscrews . (EUR) €315.00_(USD) \$417.22	Late 18th Century / Early 19th Century Picnic Corkscrew . \$365.00
GERMAN, Richard Recknagel 1899 Registered Design, Marked, NR . \$480.00	FRENCH PATENTED CORKER . \$410.00	rare Sunderland's patent roundlet with whistle, reg. in 1870 . (EUR) €275.00_(USD) \$364.24
1878 Silver Anniversary Roundlet by Gorham . \$477.00	FRED O'LEARY COLLECTION - 18th Century Picnic . \$410.00	Dutch Silver Horse type corkscrew . (EUR) €275.00_(USD) \$364.24
French Figural HERMÈS PARIS Silver Corkscrew . (EUR) €360.00_(USD) \$476.82	DUCK BILL . \$405.00	Dutch Silver Bacchus type corkscrew . (EUR) €275.00_(USD) \$364.24
FOLDING SHOE CORK-SCREW, GERMAN . \$475.00	FRED O'LEARY COLLECTION - Silver Picnic Set . \$400.69	old Hagenauer nickel plated brass stylised horse 1930's . (GBP) £232.22_(USD) \$362.28
Frank Ellis Collection - Silver Sheathed Corkscrew . (GBP) £300.00_(USD)	All Wire Corkscrew . \$400.00	Moet & Chandon Double Lever - 1902 Patent . \$355.00
	GOLD CIGAR CUTTER / KNIFE . \$400.00	
	Rare Art Deco Champion Bar Mounted Corkscrew . \$400.00	
	Perfect Couvert de Voyage Ivory Set w	



Hard to believe but this P-7-26 Mishicot Brewing in fair condition sold for \$296.00 on eBay, go figure!

JFO & Other Clubs/Conventions (Newsletter Name in Italics)

American Breweriana Association (ABA): *American Breweriana Journal* (bi-monthly) on breweriana collecting. Dues \$25.00/year. ABA, PO Box 595767, Fort Gratiot MI 48059-5767. **2011 Jun 13-18 – 30th Annual ABA Convention – MCM Elegante’ Hotel Dallas TX– ABA Members Only (Saturday Public Show).** Contact Jean Tiegs, E-Mail jtieg@americanbreweriana.org

Brewery Collectibles Club of America (BCCA): *Beer Cans & Brewery Collectibles* (bi-monthly) on breweriana collecting with emphasis on Cans. Dues \$35.00/year (Add Initiation Fee of \$3). BCCA, 747 Merus Ct, Fenton MO 63026-2092. **2011 Aug 31-Sep 3 – BCCA Convention 41 – Northern Kentucky Convention Center Covington KY – BCCA Members Only.** Contact Dave Gausepohl, Email beerdave@fusenet.

Canadian Brewerianist: *The Canadian Brewerianist* (10/year) on Canadian breweriana collecting. Dues \$25.00/year (US Funds). Loren Newman, 2978 Lakeview Trail, Bright’s Grove, Ontario, CANADA, N0N 1C0. **2011 Aug 3-7 – Canadian Brewerianist Annual Convention – Harbour Towers Hotel and Suites Victoria British Columbia – All Breweriana Collectors Welcomed.** Contact Larry Sherk, E-Mail larrysherk@hotmail.com, (416) 465-3386

Canadian Corkscrew Collectors Club (CCCC): *The Quarterly Worme* (quarterly) on corkscrew collecting. Dues \$48.00/year. Milt Becker, One Madison Street 5B, East Rutherford NJ 07073 (Make Check Payable to the Full Club Name)

East Coast Breweriana Association (ECBA): *The Keg* (quarterly) on breweriana collecting. Dues \$32.00/year. ECBA, PO Box 1392, Doylestown PA 18901. **2011 Jul 13-16 – 39th Annual ECBA Convention – Holiday Inn New Cumberland PA – ECBA Members Only (Saturday Public Show).** Contact Larry Handy, E-Mail ohugo1@aol.com

Figural Bottle Opener Club (FBOC): *The Opener* (quarterly) on cast iron openers. Dues \$30.00/year. Darryl Miller, 321 S. Cedar St., Lititz, PA 17543 (dgmiller@dejazzd.com). **Annual FBOC Convention Holiday Inn Reading PA (2010 June 11-12).**

Just For Openers (JFO): *Just For Openers* (quarterly) on all areas of opener collecting. Dues \$20.00/year or FREE on the Internet (www.just-for-openers.org). John Stanley, PO Box 64, Chapel Hill NC 27514-0064. **2011 Apr 27-May 1 – 33rd Annual Just For Openers Convention – Marriott Cedar Rapids IA – All Opener / Corkscrew / Breweriana Collectors Welcomed.** E-Mail jfo@mindspring.com

National Association Breweriana Advertising (NABA): *The Breweriana Collector* (quarterly) on breweriana collecting. Dues \$25.00/year. NABA, 340 E Ashland Ave, Mt Zion IL 62549 **2011 Aug 4-7 – 40th Annual NABA Convention – Doubletree Bay City MI – NABA Members Only (Saturday Public Show).** E-Mail gbaley@comcast.net

SHOWS (Good Sources for Openers & Corkscrews)

2011 Sep 22-24 – 29th Annual Midwest Breweriana Show – Comfort Inn 72nd-Grovers Sts Omaha NE – JFO Members Welcomed. Contact John Mlady (402) 345-7909 or Bill Baburek, (888) 569-7924 E-Mail bjbaburek@cox.net

2012 Feb 15-19 – 33rd Annual Blue & Gray Breweriana Show – Ramada Inn 5324 Jefferson Davis Highway Fredricksburg VA – All JFO Members Welcomed. Contact: John Fisher, PO Box 953, Mechanicsville, MD 20659-0953. 301-290-1573 E-Mail burntwoods@verizon.net

2012 Mar 12 – Annual Spring Breweriana & Beer Can Show – German American Society Hall 3717 S 120th St Omaha NE – 9AM-3PM (8’ Tables \$22 Each). Hospitality Room (Sat Evening Comfort Inn 107th & L Sts). Contact John Mlady (402) 345-7909

JFO Convention in Cedar Rapids, Iowa BE THERE!!!

**Just For Openers Cedar Rapids Iowa Convention
Bring a Display!!!**

Regular Contest (First, Second and Third Places)

“Bill McKenzie Best In Show Award” (Your One Favorite Opener/Corkscrew)



A couple of tough openers sold on eBay this quarter, above a B-1-14 Jenner in great condition and below a CBO-MIS-16 advertising the word Cigars on both sides.



A recent acquisition by your editor, a D-15-1 Excelsior. If someone needs this as a type, email me at jfo@mindspring.com as this is a “trader”. A very tough type to find and belongs in every collection.

WANTED (Want & Sale Ads are FREE!!!!)

Openers: Golden Glow: A-1-9, B-23-149, E-14-787. Rainier: B-3-5, B-19-135, B-21-130, F-21-2, N-11-5 & 15, B-14-40 Salinas, C-21-8 Consumers, P-19-7, P-53-6, P-54-18. P-85s: 3,4,5,11,14. Also any Breweriana from Rainier (Seattle WA, LA CA, SF CA), Golden West (Oakland CA) & Port Townsend (WA). Buy/Trade. John Cartwright, 1548 Via Arroyo, Paso Robles CA 93446, (805) 712-6836

A-3-19 Stone Malt Akron. Great Trades or Buy. Jeb Burruss, 318 Lost Oak Dr, Canyon Lake TX 78133, (830) 899-7241

A-9s: 26 Penn, 46 Tivoli, 29 Waldorf, B-9-2 Salinas, B-9-10 Ambrosia, B-22s: 8,17,27,49,59,64,67,68,74,77,85,92,95,112,113,116,118,120,123,130,133,140,142, B-31-11 Bellingham Bay, B-31-12 Salem, C-21-6 Grand Rapids, D-16-1 New Kentucky, E-18-2 Goetz & E-18-7 Portner, G-1s: 31 Griesedieck Bros, 68 Glennon, 69 Leidiger 3-V Bev, G-5s: 2,18,23,29,33,39,40,45,46,48,51,52, H-1s: 8,12,21,27,35,39,42,51, O-1-2 Leidigers, O-1-6 Walters, O-4 Beer & Soda, O-4 Orange Crush, O-8 & O-19 & O-22 & O-23 Beer & Soda, O-505 Saegertown John Stanley, PO Box 64, Chapel Hill NC 27514, (919) 824-3046, Email jfo@mindspring.com

A-17 "Wilber Brewery" & P-8 Corkscrew "Omaha Brewing Association" (EX Condition Only). Will purchase outright. John Mlady, 1506 S 25th St, Omaha NE 68105-2611, (402) 345-7909

Openers with the word Saloon, Mexican A, B & D style Openers. Great Trades Available. Jack Ford, 5351 Boyd Ave, Oakland CA 94618, (510) 655-5393

B-2s #21 Fresno Local, #22 Haenle, #37 Flecks, #39 R. I. B., #40 Anheuser. Bill Arber, 11162 Broadway St, Alden NY 14004-9515, (716) 681-4833, Email wrabra@aol.com

B-24-95 Flecks Beverages. Al Fleckenstein, 2445 NW Raleigh St, Portland OR 97210, (503) 223-0123, Email flecks@spiritone.com

B-45, B-66, I-7, P-72, P-100, R-14 types with a Corkscrew (Beer/Non-Beer) & Silver Top Beer Openers. Herb Danziger, 550 Cherry Ct, Birmingham MI 48009-1459, (810) 646-9470

B-57, B-58, B-62, B-73, Q-10. Cash/Trade. Ben Hoffman, 213 Simmons Rd, Perkiomenville PA 18704, (610) 287-8243 or Email benbey@netcarrier.com

Bond and Lillard Openers (would like to buy). Have A-29, would like any others. Lillard is a family name. George Love, 4301 Forest Plaza Dr, Hixson TN 37343, (423) 877-6006

C-39, D-12, D-24, E-22, M-52, M-68, M-103, O-511, all types. Will buy or trade. Mark Woodard, 1126 Riverboat Court, Annapolis MD 21409, (443) 756-2815, Email mark.woodard@nasa.gov

E-14-835 Yuengling, C-49-21 Coors Original, C-49-33 Moose, Buy or Trade. Harold Queen, 1001 Centre Ave, Jim Thorpe PA 18229, (717) 325-2612, Email haqueen@ptd.net

"E"s! Will Trade/Buy. Top 11 List: E-14-832 Uneeda, E-7-77 Lima, E-2-21 Park, E-3-30 Derby, E-4-207 Yosemite, E-4-244 Sequoia, E-4-245/300 Trainer, E-16-11 Ganser, E-17-9 Everett, E-17-7 I S D. Larry Moter, 10149 Michaels Rd, Woodford VA 22580, (804) 448-3928 E-Mail accneca@aol.com

"I"s to Complete my collection. Please send me a list of your extra "I"s w/ prices. I will respond! Tom Gormally, 22555 Cardiff Dr, Santa Clarita CA 91350, (661) 291-1392, Email tomphyllis@ca.rr.com

I-7s Beer or Non-Beer. Hale Milano, 506 Springhouse Rd, Camp Hill PA 17011-1454, (717) 737-5067

I-7s Beer Openers #45 A-B Malt, #63 Diamond State, #64 Edel Bruu, #84 Lion, #78 Malt Diastase, #81 Union Cream, #83 Williams: Will Pay Absolute Top \$\$\$ (Have I-7-40 Stroudsburg for Trade). Joe Todd, 5727 Bardsey Ct, Matthews NC 28104-0645, (704) 957-1658 Email Joseph.Todd@Protech-International.com

Bottle Shaped and/or Openers with Bottle on them. Gary Deachman, PO Box 438, North Woodstock NH 03262, (603) 745-2347

Brown Mfg Co (Starr X) Openers: Beaufont, Grand Prize Texas, Orange Crush (1925), Pabst, Pelco, Pep, Pilsen Callao, Schlitz, White Rock (Patd X) Harold Eblen, (209) 915-5445, E-Mail reggie2dog@msn.com

Chester PA Openers: B-18-192 Peerless, B-21-557 Haser, C-12-71 Chester, P-7-46 Stoockle, and A-17-14 & A-43-3 Soda Openers with ad for "Penn Brand". Joseph Knapp, 211-A Berbro Ave, Upper Darby PA 19082, (610) 352-5055

Cigar Box Openers (CBOs), Any Unusual, Write with Details:

Ken Hoesch, PO Box 299, Zeeland MI 49464-0299

Corkscrews-Cork Pullers-Syroco (esp Golden Knight & Clown)-Early US Patents-Anything Unusual. Have Corkscrews to Trade or Buy. Please send description to Paul Luchsinger, 2815 King Rook Ct, Williamsburg VA 23185, (757) 345-3984, Email paulcork@cox.net

Corkscrews & Tin Can Openers: Beer Openers for Trade. Joe Young, 36 S Weston Ave, Elgin IL (847) 695-0108

Corkscrews & Postcards depicting Corkscrews. Please send description, photo, sketch, photocopy, or tracing of what you have and advise price wanted. Don Bull, PO Box 596, Wirtz VA 24184, (540) 721-1128, E-Mail cork-screw@bullworks.net

Figural Corkscrews and any WASHINGTON D.C. Openers and/or Corkscrews. Sandra Emme, PO Box 1454, Upper Marlboro MD 20773, (301) 627-8207

Funeral Openers: Any opener with a Funeral Home ad. David Goetz, PO Box 522, Ashland OH 44805, (419) 566-0391, balencur@yahoo.com

Hartford, Connecticut Openers & Breweriana Wanted, esp. E-8-61 Fischer & P-17-4 Columbia. Also general CT & New Eng. Beer Openers. Edward Johnson, 1300 Poquonock Ave, Windsor CT 06095, Email johnsoned1777@hotmail.com

Illinois Openers and Illinois Breweriana. Buy-Sell-Trade. Dave Lendy, 1927 Allen Dr, Geneva IL 60134, (630) 715-2086, Email davidlendy@aol.com

Jamestown Brewing, Kuhn's Beer, Chautauqua Brew, Monessen PA, Independent Brewing, Schaefer, & all Cleveland Beers. Ed Schaefer, PO Box 149, Maple Springs NY 14756, Email eschaeferbeer@juno.com

Joliet IL Openers: Citizens: B-14-97, C-17-69, E-1-32, E-3-12, E-4-175, K-5-6, O-10-1, P-121-1, Porter: A-17-24, B-18-594,618, B-21-199, F-6-9, Sehrings: B-21-561, G-9-39. John Bitterman, Email jebitter@aol.com

L-1 Openers Wanted! Looking for both Beer or Consumer product advertising. **Also looking for M1, M2, M3, M73 & Syroco Openers / Corkscrews.** Tommy Campnell 10908 NE Bill Point Ct Bainbridge Island, WA 98110, (206) 612-7239, Email tommy.campnell@gmail.com

Minnesota Openers: A-1-73 Royal Bohemian, A-21-63 Schatz-Brau, A-21-77 Otto, A-21-128 Hamm's, B-7-3 Hauenstein, B-7-22 Schells, B-13-2 Grain Belt, B-18-75 Standard, B-21-222 Bierbauer, B-21-370 Fitger, O-2-14 Royal Bohemian, O-4-4 Gluek. Pat Stambaugh, 718 S Lakeshore Dr, Lake City MN 55401, Email p.stam@mchsi.com

Montana & Idaho Beer/Brewery Openers & Breweriana. Steve Armstrong, PO Box 741, Kamiah ID 83536, Email sunset@cybrquest.com

NEBRASKA OPENERS: Any with Nebraska towns or names & Esp Jetter Beer openers. Dick Schroeder, 3857 Calvalry Hills Dr, North Platte NE 69101, (308) 532-5597. Email dbschrod@charter.net

New York Openers: E-4-345 Koch, G-1-67 Hupfel. Will Buy/Trade. Mark Barren, 6141 Tachi Dr., Newfane NY 14108-9517, (716) 778-9724

Pinney Beverage Items Wanted: Pens & Pencils, Bottle & Can Openers, Any item with Pinney Beverage Company, Salt Lake City, Utah. Dave Pinney, 1766 Red Barn Road, Encinitas CA 92024, (760) 753-8151, Email davecent@att.net

Wisconsin Brewery Openers: Knapstein, Hortonville, Princeton, Hochgreve, Bleser, Shawano & Rahr; esp A-17-27 Rahr. Dan Mayville, E7446 County Road H, Fremont WI 54940-9747

Have **two** separate lists of East Coast beer and soda openers for sale in the \$3 - \$25 range. I can email scans or pictures of any opener. I will also trade for any Pennsylvania beer openers, I need. John Fisher PO Box 953 Mechanicsville, MD 20659-0953 burntwoods@verizon.net

SELLING (Want & Sale Ads are FREE!!!!)

Beautifully Displayed Collection of over 1,000 Openers, Can Openers & Corkscrews on 60+ Boards. Over 20 years of collecting & cleaning. Interested parties contact: Dick Britton, 2902 Lacota Rd, Waterford MI 48328-3127, (248) 683-2134.

"Hometown Beer - A History of Kansas City's Breweries" by H James Maxwell & Bob Sullivan Jr, Hardback 300 Pages, 585 Pictures (352 Color), \$39.95 Postpaid (US). H James Maxwell, 1050 West Blue Ridge Blvd, Kansas City MO 64145-1216

Just For Openers Books and Don Bull Corkscrew Books: Please visit the JFO website: www.just-for-openers.org or www.bullworks.net

Art Santen Special Fixed Price List RESULTS (Thanks to All 40 Participants)

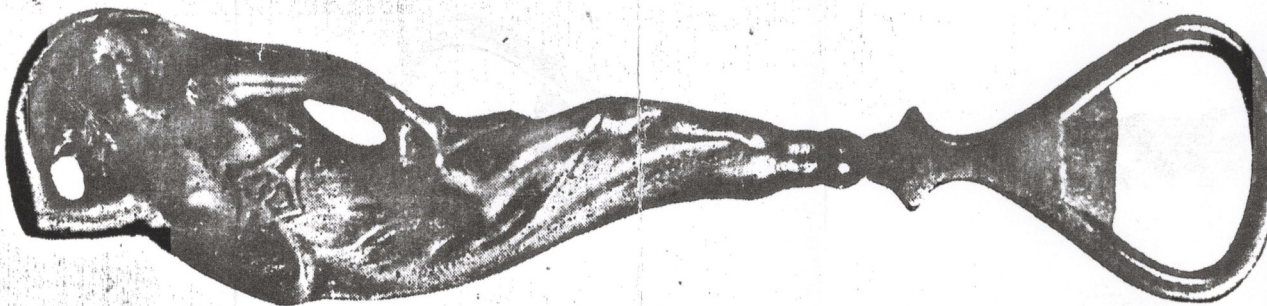
A-001-012, K & S, IN, 6, \$17.50	B-015-016, Arrow, IN, 4, \$20.00	B-021-280, Moerschel, MO, 6, \$66.00
A-001-033, American, LA, 8, \$30.00	B-015-018, Emral, IN, 4, \$20.00	B-021-298, Poth, NJ, 2, \$30.00
A-001-036, Furniture City, MI, 6, \$17.50	B-016-002, Haberle, NY, 8, \$20.00	B-021-343, Franz Bros, IL, 2, \$30.00
A-001-067, Alliance, OH, 6, \$35.00	B-017-003, Pfeiffer, MI, 6, \$30.00	B-021-353, Oswald, PA, 6, \$30.00
A-001-076, Gettelman, WI, 6, \$25.00	B-018-028, Franz Bros, IL, 4, \$30.00	B-021-356, Portner, VA, 2, \$15.00
A-004-007, Crystal Rock, OH, 6, \$30.00	B-018-078, Tacoma, WA, 6, \$12.00	B-021-364, Blatz, SD, 6, \$40.00
A-004-010, Star, MI, 4, \$60.00	B-018-137, Franz Bros, IL, 4, \$30.00	B-021-387, Schaumloeffel, , 4, \$15.00
A-004-034, Joliet Citizens, IL, 4, \$10.00	B-018-140, Leisy, IL, 6, \$10.00	B-021-392, Beck, MI, 2, \$40.00
A-004-035, K K Beer, OH, 6, \$25.00	B-018-141, National, PA, 6, \$15.00	B-021-393, Cassville, WI, 2, \$35.00
A-004-037, Hoster, OH, 4, \$50.00	B-018-156, Buffalo , CA, 6, \$12.00	B-021-395, Crescent, PA, 4, \$20.00
A-004-046, Yakima, WA, 4, \$40.00	B-018-215, Radeke, IL, 6, \$16.00	B-021-421, Freeland, PA, 4, \$40.00
A-004-053, City, OH, 4, \$50.00	B-018-242, Acme (Slanted), GA, 4, \$25.00	B-021-432, Rock Island, IL, 6, \$15.00
A-004-055, Danzer Aroma, MO, 6, \$50.00	B-018-244, American, IN, 6, \$20.00	B-021-443, Garden City, MT, 4, \$50.00
A-009-008, Kamm & Schellinger, IN, 8, \$60.00	B-018-263, Diersen, KY, 4, \$40.00	B-021-450, Tannhaeuser, PA, 6, \$40.00
A-015-001, Aurora, IL, 4, \$25.00	B-018-271, Gambinus, OR, 4, \$25.00	B-021-458, H-O, , 6, \$14.00
A-015-023, Moehn, IA, 6, \$60.00	B-018-272, Gammel, NY, 6, \$30.00	B-021-479, Du Bois, PA, 6, \$35.00
A-015-024, Peoples, IN, 6, \$20.00	B-018-273, German-American, NY, 4, \$25.00	B-021-493, Owyhee, ID, 4, \$65.00
A-017-005, Kamm & Schellinger / Our Brands, IN, 6, \$41.00	B-018-292, Peerless, PA, 6, \$15.00	B-021-507, Majestic, PA, 6, \$20.00
A-017-019, Waverly, IN, 4, \$20.00	B-018-296, Reading, PA, 6, \$30.00	B-021-518, Erin Brew, OH, 4, \$15.00
A-018-001, Buck & Century, , 10, \$55.00	B-018-298, Reck, IL, 2, \$30.00	B-021-536, Crown, OH, 4, \$15.00
A-020-016, Century, CO, 6, \$20.00	B-018-315, Tennessee, TN, 6, \$50.00	B-021-537, Decatur, IL, 6, \$150.00
A-020-037, Munchs, SC, 2, \$30.00	B-018-323, American, OR, 2, \$40.00	B-021-546, Lemp, IL, 6, \$60.00
A-021-010, Ziegler, WI, 4, \$40.00	B-018-356, Goenner & Co, PA, 6, \$20.00	B-021-593, Worcester, MA, 6, \$20.00
A-021-056, Hudepohl Wiedemann, OH, 6, \$35.00	B-018-366, Imperial, MO, 2, \$40.00	B-022-016, Ottawa, IL, 4, \$20.00
A-028-011, Franklin, OH, 6, \$15.00	B-018-371, Moerlbach Heim Brau Banquet Brew, NY, 6, \$20.00	B-022-057, Du Bois, PA, 6, \$25.00
A-028-015, Weinhard (Top Filed), WA, 6, \$21.00	B-018-375, Ottumwa, IA, 2, \$35.00	B-022-069, Muessel, IN, 6, \$25.00
A-028-021, Haffenreffer, MA, 6, \$30.00	B-018-377, Rising Sun, NJ, 4, \$20.00	B-022-076, Krantz, OH, 6, \$15.00
A-028-022, Schaller, OH, 4, \$21.00	B-018-382, Whitewater, WI, 4, \$35.00	B-022-128, Old Style, WI, 6, \$45.00
A-028-038, Heim Brau, MO, 2, \$65.00	B-018-396, Langs, NY, 10, \$35.00	B-023-005, Centlivre (Spinner), IN, 6, \$21.00
A-028-042, Eilert, OH, 8, \$50.00	B-018-408, Calumet, WI, 6, \$15.00	B-023-096, Mitchell (Spinner), TX, 6, \$41.00
A-029-026, Sugar Loaf, MN, 8, \$30.00	B-018-414, Fountain City, WI, 4, \$20.00	B-023-102, Knapstein, WI, 6, \$15.00
A-030-003, Leinenkugel, WI, 10, \$150.00	B-018-423, Niagara Falls, NY, 2, \$22.00	B-023-109, Gold Medal Tivoli (Spinner), MA, 6, \$21.00
A-030-011, Rainier, CA, 6, \$60.00	B-018-431, B & O, IL, 4, \$40.00	B-023-146, Yough, PA, 4, \$17.50
A-035-003, Steger, WI, 6, \$50.00	B-018-500, Bluefield, WV, 4, \$21.00	B-023-148, Goldcrest, TN, 8, \$75.00
A-035-008, Leisy, IL, 10, \$47.00	B-018-528, Elfenbrau, WI, 10, \$35.00	B-024-002, Auto City, MI, 6, \$66.00
A-035-011, Wacker, PA, 8, \$47.00	B-018-543, Hupfel, NY, 6, \$20.00	B-024-024, Mineral Springs, WI, 6, \$125.00
A-035-016, Popel-Giller, IL, 4, \$47.00	B-018-564, North American, NY, 6, \$21.00	B-024-065, Grace Bros, CA, 6, \$76.00
A-035-018, Walla Walla, WA, 8, \$66.07	B-018-573, Banner, MI, 6, \$50.00	B-024-081, Schells, MN, 6, \$37.00
A-035-031, Schooner, NC, 2, \$75.00	B-018-592, Pilsener, OH, 6, \$12.00	B-024-090, Atlas, IL, 6, \$37.00
A-041-001, Medford, WI, 8, \$60.00	B-019-028, Ohio, OH, 6, \$20.00	B-025-001, Michel, WI, 4, \$20.00
A-042-002, Buffalo Var A, CA, 8, \$60.00	B-019-039, Wilhelm Schim & Ramsey, PA, 8, \$56.00	B-025-006, Gipps, IL, 4, \$20.00
A-042-016, Port Washington, WI, 6, \$25.00	B-019-040, Willow Springs, NE, 6, \$15.00	B-025-008, Atlas, IL, 6, \$20.00
A-055-001, Apache, AZ, 4, \$250.00	B-019-102, Salem, OR, 4, \$25.00	B-060-002, Eagle (Brass), NY, 4, \$40.00
B-001-015, Kauffman, OH, 2, \$40.00	B-019-104, Schellhas, MN, 4, \$20.00	B-063-014, Pt Huron, MI, 4, \$50.00
B-001-027, Fort Pitt, PA, 1, \$40.00	B-019-119, Fensel, NY, 6, \$20.00	B-070-001, Liberty, PA, 6, \$203.04
B-002-005, Fresno, CA, 4, \$50.00	B-019-155, Willow Springs, NE, 4, \$15.00	C-010-023, Yough, PA, 6, \$10.00
B-002-010, Old Mission, CA, 6, \$65.00	B-019-163, Willow Springs, NE, 6, \$17.50	C-010-049, Peoples, NJ, 6, \$12.50
B-002-014, United States, IL, 6, \$40.00	B-019-167, Highland, IL, 6, \$16.00	C-012-117, Wisconsin, WI, 4, \$16.00
B-002-015, National, NY, 6, \$35.00	B-019-194, Spaeth, , 6, \$20.00	C-012-138, Grossvater, OH, 6, \$35.00
B-002-032, Hornung, PA, 6, \$60.00	B-019-212, Hornung, PA, 6, \$40.00	C-013-078, Old Style , WI, 2, \$5.00
B-002-035, Bangor, WI, 2, \$21.00	B-019-223, Western, IL, 6, \$20.00	C-013-239, Manistee, MI, 4, \$26.00
B-003-004, Edelweiss, IL, 8, \$20.00	B-019-232, Reif, TN, 6, \$50.00	D-003-019, Leisy (Eoria), IL, 6, \$20.00
B-005-003, Palouse, WA, 2, \$40.00	B-019-246, Fresno, CA, 4, \$25.00	D-007-002, Schoenhofen, IL, 6, \$20.00
B-005-004, Reno, NV, 6, \$30.00	B-021-090, White Eagle, IL, 4, \$25.00	E-002-028, Bunker Hill, MA, 6, \$25.00
B-005-005, Spokane, WA, 4, \$40.00	B-021-115, Kazmaier, PA, 6, \$25.00	E-004-022, Clevelander, OH, 6, \$40.00
B-005-005, Spokane, WA, 4, \$35.05	B-021-155, Eastern Oregon, OR, 6, \$20.00	E-004-086, Southeastern, TN, 4, \$25.00
B-005-016, Moerschel Spring, MO, 2, \$75.00	B-021-168, Indian, PA, 6, \$20.00	E-004-099, Ackermans, IN, 6, \$40.00
B-005-021, Broadway, NY, 4, \$30.00	B-021-172, Kittanning, PA, 4, \$20.00	E-004-100, Aetna, CT, 6, \$20.00
B-005-026, Republic, WA, 4, \$20.00	B-021-175, Lembeck & Betz, NJ, 6, \$20.00	E-004-219, Class & Nachod, PA, 4, \$20.00
B-006-010, Star, PA, 4, \$20.00	B-021-198, Porter, IL, 4, \$50.00	E-004-225, Fitgers, MN, 4, \$60.00
B-013-029, Gipps, IL, 8, \$35.00	B-021-202, Reck, IL, 2, \$10.00	E-004-259, Michel, NY, 6, \$75.00
B-014-059, Schwarzenbach, PA, 4, \$20.00	B-021-212, Star, WA, 6, \$20.00	E-004-268, Milan Springs, OH, 6, \$100.00
B-014-065, Burg'meister, , 6, \$20.00	B-021-223, Billings, MT, 6, \$56.00	E-004-380, Cleveland-Sandusky, OH, 6, \$93.00
B-014-121, Fresno, CA, 4, \$20.00	B-021-238, Du Bois, PA, 4, \$15.00	E-006-043, Red Ribbon, WI, 6, \$40.00
B-014-131, Old Anchor, PA, 6, \$30.00	B-021-250, Hack & Simmon, IN, 6, \$30.00	E-006-084, Pittsburgh, PA, 6, \$25.00
B-014-135, A-1, PA, 6, \$10.00	B-021-264, Inland, WA, 4, \$30.03	E-006-095, Auto City, MI, 6, \$50.00
B-014-137, Sterling Schlitz, IA, 6, \$66.00	B-021-273, Lewistown, MT, 6, \$50.00	E-006-128, Apex, WA, 6, \$100.00
	B-021-278, Marion, IN, 6, \$14.00	E-006-148, Pittsburgh, PA, 6, \$20.00

- E-006-152, Storck, WI, 4, \$40.00
- E-006-188, Pittsburgh, PA, 6, \$20.00
- E-007-009, Milwaukee, CA, 6, \$12.00
- E-007-018, Krueger, NJ, 4, \$20.00
- E-007-019, Lackman, OH, 6, \$15.00
- E-007-020, Manitowoc, WI, 6, \$16.00
- E-007-040, United States, IL, 6, \$15.00
- E-007-087, Consumers, NY, 6, \$40.00
- E-008-003, Jones, NH, 2, \$10.00
- E-008-004, Lion, NY, 6, \$15.00
- E-008-030, Wayne, PA, 4, \$20.00
- E-008-052, Bowler Bros, MA, 6, \$25.00
- E-008-061, Fischer, CT, 4, \$20.00
- E-008-064, Renner & Weber, OH, 4, \$60.00
- E-008-065, Schmulbach, WV, 2, \$12.00
- E-008-076, Munz, , 4, \$25.00
- E-008-078, Oertels, KY, 4, \$20.00
- E-008-079, Providence, RI, 6, \$60.00
- E-008-087, Burkhardt, OH, 6, \$25.00
- E-008-096, Mass, MA, 6, \$25.00
- E-008-118, Poth, PA, 6, \$25.00
- E-009-005, Burton, NJ, 6, \$15.00
- E-009-037, Krantz, OH, 6, \$20.00
- E-009-084, Thieme & Wagner, IN, 6, \$12.50
- E-009-099, Bowler Bros, MA, 6, \$20.00
- E-009-139, Horlacher's, PA, 8, \$30.00
- E-014-624, Miami Valley, OH, 6, \$20.00
- E-014-660, Matz, OH, 4, \$5.00
- E-014-667, San Diego, CA, 6, \$20.00
- E-014-723, Kims, PA, 6, \$17.50
- E-014-744, General Braddock, PA, 8, \$30.00
- E-014-775, Cremo, CT, 8, \$40.00
- E-014-859, Miami Valley (Not #661), OH, 6, \$20.00
- E-016-002, Ryan, NY, 4, \$20.00
- E-016-008, Deppen, PA, 6, \$20.00
- E-018-005, Haffenreffer, MA, 6, \$40.00
- E-022-003, Stegmaier, PA, 6, \$25.00
- E-023-008, Berghoff, IN, 6, \$25.00
- E-023-016, Neef, CO, 6, \$40.00
- E-023-018, Wieland, CA, 4, \$50.00
- E-025-003, Rainier, WA, 6, \$25.00
- E-025-003, Rainier, WA, 8, \$25.00
- E-025-006, Krueger, NJ, 6, \$12.00
- E-026-001, Virginia, VA, 6, \$60.00
- E-027-001, Kamm & Schellinger, IN, 2, \$15.00
- F-001-002, Waukesha, WI, 8, \$20.00
- F-002-032, Lynwood, CA, 6, \$25.00
- F-002-050, Seitz, PA, 8, \$47.00
- F-006-007, Huebner, OH, 4, \$50.00
- F-006-041, Canton, OH, 6, \$30.00
- F-006-056, Terre Haute, IN, 4, \$30.00
- F-006-096, Steuben, OH, 6, \$20.00
- F-012-002, Waterloo, IL, 4, \$50.00
- G-005-036, Lykens, PA, 4, \$12.50
- G-009-036, Kochs, NY, 6, \$25.00
- G-010-003, Moerlbach, NY, 2, \$75.00
- G-011-001, Muessel, IN, 2, \$30.00
- H-001-028, Liberty, PA, 4, \$35.00
- H-002-018, Fink, PA, 6, \$10.00
- H-002-055, Blatz, WI, 8, \$10.00
- H-002-078, Camden, NJ, 6, \$31.00
- H-002-081, Frackville, PA, 4, \$45.05
- H-002-085, Langs, NY, 6, \$30.00
- H-002-153, Garden Ale (Could Be a Foreign Beer?), IL, 4, \$15.00
- I-004-039, Lion, NY, 6, \$10.00
- I-007-039, Schultz, NJ, 6, \$66.50
- I-007-054, Manhattan , IL, 6, \$66.50
- I-007-068, Manhattan Chicago, IL, 6, \$35.00
- M-003-019, Zetts, NY, 6, \$25.00
- M-003-023, Fuhrmann & Schmidt, PA, 8, \$65.00
- M-027-001, Lone Star, TX, 6, \$10.00
- M-027-001, Lone Star (Buckle), TX, 6, \$10.00
- M-027-001, Lone Star, TX, 6, \$10.00
- M-027-001, Lone Star (Double Loop Buckle) (Hook Broken Off), TX, 2, \$5.00
- M-037-001, Schlitz , WI, 8, \$15.00
- M-134-001, Omaha, NE, 4, \$75.00
- N-004-006, Gunther (Blade Worn), MD, 2, \$30.00
- N-029-005, Homestead, PA, 6, \$20.00
- N-029-007, Frederick, IL, 6, \$25.00
- N-031-002, Hamms, MN, 6, \$25.00
- N-031-002, Hamms, MN, 6, \$25.00
- N-035-001, S-B (Blade Broken), FL, 2, \$10.00
- N-035-003, Hamms (Blade Broken), MN, 2, \$20.00
- N-041-009, Hamms, , 8, \$25.00
- N-045-001, Metz, NE, 6, \$21.00
- N-048-001, Valley Forge, PA, 8, \$203.04
- N-050-004, Lone Star, TX, 4, \$50.00
- N-067-002, Hyde Park & Stag, MO, 6, \$60.00
- O-002-004, Prince, IL, 4, \$52.00
- O-004-008, Schaefer, NY, 6, \$30.00
- O-004-026, Schmidt, IN, 6, \$15.00
- O-004-031, Jax, LA, 4, \$20.00
- P-001-005, Green Tree, MO, 6, \$126.00
- P-001-009, Lemp, MO, 6, \$83.00
- P-013-001, Schlitz , WI, 6, \$65.00
- P-015-019, Pabst, IA, 6, \$20.00
- P-017-006, Parkersburg, WV, 6, \$40.00
- P-018-001, Jamestown, NY, 6, \$65.00
- P-019-041, Blue Ribbon, MO, 6, \$16.00
- P-051-021, Southwestern, NM, 4, \$60.00
- P-054-042, Moerlein, OH, 8, \$50.00
- P-103-002, Maier & Zobelein, CA, 6, \$40.00
- P-165-001, Sebewaing (Blade Worn), MI, 4, \$40.00
- R-007-001, Hauenstein, MN, 6, \$41.00

SPECIAL PREMIUM OFFER

GOOD TO SEPTEMBER 1st., 1916

SEND US YOUR ORDER FOR A CASK OF SCHUSTER'S OLD LAGER, TOGETHER WITH THIS COUPON



AND

WE WILL MAIL YOU FREE OF CHARGE THIS BEAUTIFUL SILVER BOTTLE OPENER WHICH RETAILS AT \$1.25.

Schuster Brewing Co., Rochester, Minn.

Pat Stambaugh is looking for this Opener (Has an S on her Belt), anyone ever seen one with Schuster Ad???

JUST FOR OPENERS

33rd ANNUAL CONVENTION REGISTRATION

APRIL 27-May 1, 2011

Cedar Rapids Marriott

1200 Collins Road N.E. · Cedar Rapids, Iowa 52402

(Just off I-380) (Free Airport Shuttle, Airport is 15 Minutes Away)

1-319-393-6600 (Local) or 1-800-396-2153 (Request Just For Openers to Get in Room Block)

(Rate is \$94.00 for a Single, Double, Triple or Quad, \$114.00 for a King Suite)
 (High Speed Internet Included) (Rate Good for 3 Days Before and 3 Days After Convention)
 (Hotel Cutoff Date is April 5th 2011)

(Tell them you are with the Just For Openers Group)

MAKE CEDAR RAPIDS, IOWA YOUR NEXT STOP ON THE JFO CONVENTION TRAIL

MEMBER REGISTRATION FEE - **\$40.00**

(MEMBER INCLUDES HOSPITALITY ROOM, CONVENTION OPENER & 1 SHOW TABLE)

SPOUSE/PARTNER - **\$10.00 (Total Member & Spouse/Partner \$50)**

(SPOUSE/PARTNER INCLUDES USE OF HOSPITALITY ROOM) (NOTE:CHILDREN ARE FREE)

NAME/(SPOUSE/PARTNER) _____

ADDRESS _____

CITY _____ STATE(PROVINCE) _____ ZIP _____

EVENING PHONE NUMBER _____

DATE YOU WILL ARRIVE _____ APPROXIMATE TIME _____

DATE & TIME YOU WILL LEAVE _____ (NEED FOR PLANNING PURPOSES)

HOW WILL YOU ARRIVE? CAR ___ PLANE ___ TRAIN ___ OTHER _____

IF PLANE? AIRLINE _____ FLIGHT # _____ ETA _____

NAME(S) FOR CONVENTION BADGE(S): _____

HOSPITALITY ROOM DRINK Brands: Beer: _____ Soda/Water: _____

MAKE CHECKS PAYABLE TO John Stanley, Send Checks to:

JFO 33 PO Box 64 Chapel Hill NC 27514

Phone (919) 419-1546 or (919) 824-3046 (Cell)

******* BRING A DISPLAY !!!*******

“33rd Just For Openers Convention Registration (Page 2)”

Convention Wish List

**List up to 10 Openers/Corkscrews,
Send in with Registration Form**

01) _____	06) _____
02) _____	07) _____
03) _____	08) _____
04) _____	09) _____
05) _____	10) _____

Just For Openers 2011 Cedar Rapids Iowa Convention Wantlist

- | | | |
|---|--|--|
| <p>A-001-073, Royal Bohemian (1), Pat Stambaugh
 A-004-050, Red Ribbon, John Cartwright
 A-013-021, Independent, Scott Williams
 A-015-046, Waverly, Scott Williams
 A-015-071, Interstate, Scott Williams
 A-015-999, Any US Beer, Gary Deachman
 A-016-999, Any US Beer, Gary Deachman
 A-017-026, Moehn, Scott Williams
 A-017-999, Any US Beer, Gary Deachman
 A-021-063, Schatz Brau (3), Pat Stambaugh
 A-021-077, Ottos Lager (2), Pat Stambaugh
 A-021-128, Hamms (4), Pat Stambaugh
 A-028-999, Any US Beer, Gary Deachman
 A-043-999, Any US Beer, Gary Deachman
 A-053-006, Schlitz, Scott Williams
 B-005-037, Moehn, Scott Williams
 B-007-003, Hauenstein (5), Pat Stambaugh
 B-007-022, Schells (6), Pat Stambaugh
 B-008-003, City Ale, John Stanley
 B-009-002, Salinas, John Cartwright
 B-010-002, Salinas, John Cartwright
 B-018-075, Standard (8), Pat Stambaugh
 B-018-167, Davenport, Scott Williams
 B-018-505, Edelbrau, Scott Williams
 B-018-639, Western Brew, Scott Williams
 B-021-209, Seitz, Ben Hoffman
 B-021-222, Bierbauers (7), Pat Stambaugh
 B-021-322, Blass (8), Pat Stambaugh
 B-022-116, Yough, Ben Hoffman
 B-022-127, Moehn, Scott Williams
 B-023-159, San Diego, John Stanley
 B-023-180, Liebotschaner, John Stanley
 B-026-999, Any US Beer, Gary Deachman
 B-031-008, Valley Brew, John Cartwright
 B-037-999, Any US Beer, Gary Deachman
 B-052-999, Any US Beer, Gary Deachman
 B-055-011, Bud, Ben Hoffman
 B-055-014, Lone Star, Ben Hoffman
 B-055-024, Falstaff, Ben Hoffman</p> | <p>B-077-001, Rialto, Gary Deachman
 C-001-999, Any US Beer, Gary Deachman
 C-019-024, Stanton, Ben Hoffman
 C-020-014, Schaefer, Ben Hoffman
 C-020-028, Trainer, Ben Hoffman
 C-066-001, Atlantic, Gary Deachman
 D-016-001, New Kentucky, John Stanley
 D-023-001, Star, Gary Deachman
 E-004-999, Any US Beer, Harriet Waldo
 E-008-024, New Braunfels, John Stanley
 E-017-999, Any US Beer, Gary Deachman
 E-033-999, Any US Beer, Gary Deachman
 F-021-002, Rainier, John Cartwright
 F-038-001, Gutsch, Gary Deachman
 G-076-001, Budweiser, Gary Deachman
 G-087-001, Pabst, Gary Deachman
 H-009-001, Schlitz, Gary Deachman
 H-012-001, Salem, Gary Deachman
 H-013-001, Fremont, Gary Deachman
 H-999-999, Any US Beer, Harriet Waldo
 I-007-081, Union, Ben Hoffman
 I-007-083, Roger Williams, Ben Hoffman
 I-009-003, Valley Forge, Rick Atwood
 J-008-004, Goetz, Rick Atwood
 J-008-010, Hudepohl, Rick Atwood
 J-008-013, Ballantine, Rick Atwood
 J-008-014, DuBois, Rick Atwood
 J-008-015, American, Rick Atwood
 L-002-011, Indiana, John Stanley
 L-002-021, Cape Girardeau, John Stanley
 L-002-022, Enterprise, John Stanley
 L-002-024, Maier & Zobelein, John Stanley
 L-002-026, Anheuser-Busch, John Stanley
 L-002-999, Any US Beer, Gary Deachman
 L-008-001, Hamms, Gary Deachman
 L-010-001, Alpen Brau, Gary Deachman
 L-013-001, Iroquois, Gary Deachman
 M-003-999, Sliders, John Ross
 M-032-001, Pabst, Rick Atwood
 M-073-999, Sliders, John Ross</p> | <p>N-011-005, Rainier, John Cartwright
 N-011-015, Rainier, John Cartwright
 N-023-001, Schlitz, Rick Atwood
 N-023-011, Schaefer, Rick Atwood
 N-124-001, Bud, Gary Deachman
 O-002-014, Royal Bohemian (9), Pat Stambaugh
 O-004-004, Gluek (10), Pat Stambaugh
 P-004-002, Weinhard, John Cartwright
 P-019-007, Rainier, John Cartwright
 P-054-018, Rainier, John Cartwright
 P-085-015, Olympia, John Cartwright
 Z-999-999, Celluloid Corkscrews (Ladies Legs, Alligators, Mermaids), Josef L'Africain
 Z-999-999, Corkscrews w/ Patent Info, Josef L'Africain
 Z-999-999, Folding Corkscrews, Josef L'Africain
 Z-999-999, Lifters Multi-Colored/Enamelled, John Ross
 Z-999-999, Mechanical Corkscrews, Josef L'Africain
 Z-999-999, Missouri Openers, Harriet Waldo
 Z-999-999, Montana Openers, Harriet Waldo
 Z-999-999, Nebraska Breweriana, John Mlady
 Z-999-999, Nebraska Openers, John Mlady
 Z-999-999, Non-Beer M-73s, Josef L'Africain
 Z-999-999, Picnic Corkscrews, Josef L'Africain
 Z-999-999, Ross Pig Corkscrews, Josef L'Africain
 Z-999-999, Syroco Corkscrews, Josef L'Africain
 Z-999-999, Tusk/Ivory Corkscrews, Josef L'Africain
 Z-999-999, Will & Finck Corkscrews, Josef L'Africain</p> |
|---|--|--|